

CYPRIMUM
METALS LIMITED

**INVESTOR PRESENTATION
DECEMBER 2019**



ABN: 48 002 678 640
ASX: CYM
Website: www.cypriummetals.com

Disclaimer

This presentation (Presentation) has been prepared by Cyprrium Metals Limited based on information available to it and from third party sources. By retaining this Presentation, you (the Recipient) acknowledge and represent to Cyprrium Metals Limited that you have read, understood and accepted the terms of this Important Notice. If you do not accept these terms, you should immediately destroy or delete this Presentation. This Presentation does not purport to contain all the information that a prospective investor may require in connection with any potential investment in Cyprrium Metals Limited. You should not treat the contents of this Presentation, or any information provided in connection with it, as financial advice, financial product advice or advice relating to legal, taxation or investment matters. No representation or warranty is made by Cyprrium Metals Limited or any of its advisers, agents or employees as to the accuracy, completeness or reasonableness of the information contained in this Presentation or provided in connection with it. No information contained in this Presentation or any other written or oral communication in connection with it is, or shall be relied upon as, a promise or representation and no representation or warranty is made as to the accuracy or attainability of any estimates, forecasts or projections set out in this Presentation. No liability will attach to Cyprrium Metals Limited with respect to any such information, estimates, forecasts or projections. Cyprrium Metals Limited does not accept responsibility or liability for any loss or damage suffered or incurred by you or any other person or entity however caused (including, without limitation, negligence) relating in any way to this Presentation including, without limitation, the information contained in or provided in connection with it, any errors or omissions from it however caused (including without limitation, where caused by third parties), lack of accuracy, completeness, currency or reliability, or you or any other person or entity placing any reliance on this Presentation, its accuracy, completeness, currency or reliability. Cyprrium Metals Limited does not accept any responsibility to inform you of any matter arising or coming to Cyprrium Metals Limited's notice after the date of this Presentation which may affect any matter referred to in this Presentation. Any liability of Cyprrium Metals Limited, their advisers, agents and employees to you or to any other person or entity arising out of this Presentation including pursuant to the Australian Securities and Investments Commission Act 2001, Corporations Act 2001, Part IVA or V (including sections 51AA, 51AB, 51AC, 52 or 53) of the Trade Practices Act 1974 or any corresponding provision of any state or territory legislation, or similar provision under any applicable law is, to the maximum extent permitted by law, expressly disclaimed and excluded. The distribution of this Presentation may be restricted by law in certain jurisdictions. Recipients and any other persons who come into possession of this Presentation must inform themselves about, and observe any such restrictions.

Future matters

This Presentation contains reference to certain intentions, expectations, future plans, strategy and prospects of Cyprrium Metals Limited. Those intentions, expectations, future plans, strategy and prospects may or may not be achieved. They are based on certain assumptions, which may not be met or on which views may differ and may be affected by known and unknown risks. The performance and operations of Cyprrium Metals Limited may be influenced by a number of factors, many of which are outside the control of Cyprrium Metals Limited. No representation or warranty, express or implied, is made by Cyprrium Metals Limited, or any of its directors, officers, employees, advisers or agents that any intentions, expectations or plans will be achieved either totally or partially or that any particular rate of return will be achieved.

Given the risks and uncertainties that may cause Cyprrium Metals Limited's actual future results, performance or achievements to be materially different from those expected, planned or intended, Recipients should not place undue reliance on these intentions, expectations, future plans, strategy and prospects. Cyprrium Metals Limited does not warrant or represent that the actual results, performance or achievements will be as expected, planned or intended.

JORC Statements and Exploration Results

Competent Person Statement

The information in this document that relates to Exploration Targets, Exploration Results, Mineral Resources and/or Mineral Reserves is an accurate representation of the available data and is based on the information compiled by Mr Peter van Luyt who is a member of the Australian Institute of Geoscientists. Mr Peter van Luyt is the Chief Geologist of Cyprrium Metals Limited, in which he is also a shareholder. Mr van Luyt has sufficient experience which is relevant to the style of mineralisation and type of deposit under consideration and the activity he is undertaking to qualify as a Competent Person (CP) as defined in the 2012 Edition of the Joint Ore Reserves Committee (JORC) "Australasian Code for Reporting of Exploration Results, Mineral Resources and Ore Reserves". Mr van Luyt consents to the inclusion in the document of the matters based on his information in the form and context in which it appears.

Notes regarding reporting of Mineral Resources in this presentation

The information in this document that relates to the Hollandaire Mineral Resource Estimate is extracted from the report created by Silver Lake Resources Limited entitled "Mineral Resources and Ore Reserve Update", 26 August 2016 and is available to view on Silver Lake's website (www.silverlakeresources.com.au) and the ASX (www.asx.com.au). Information pertaining to the Hollandaire Mineral Resource was prepared and first disclosed under JORC Code 2004 by Silver Lake Resources on 31 July 2013. The Company confirms that it is not aware of any new information or data that materially effects the information included in the original market announcement and in the case of the estimates of Mineral Resources that all material assumptions and technical parameters underpinning the estimates in the relevant market announcement continue to apply and have not materially changed. The Company confirms that the form and context in which the Competent Person's findings have been presented , have not been materially modified from the original market announcement.

Notes regarding reporting of Exploration Results in this presentation

Cyprrium Metals Limited is not aware of any new information or data that materially affects this information other than as specified in this presentation and the mentioned announcements. Cyprrium Metals Limited confirms that it is not aware of any new information or data that materially affects the information included in the original market announcements and, in the case of Mineral Resources and Exploration Targets that all material assumptions and technical parameters underpinning the estimates in the relevant market announcement continue to apply and have not materially changed. Cyprrium Metals Limited confirms that the form and context in which the Competent Persons findings are presented have not been materially modified from the original market announcements. Cyprrium Metals Limited confirms that the information relating to exploration results is based upon and, fairly represents the information and supporting documentation prepared by the named Competent Persons.

Corporate Snapshot

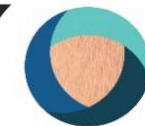
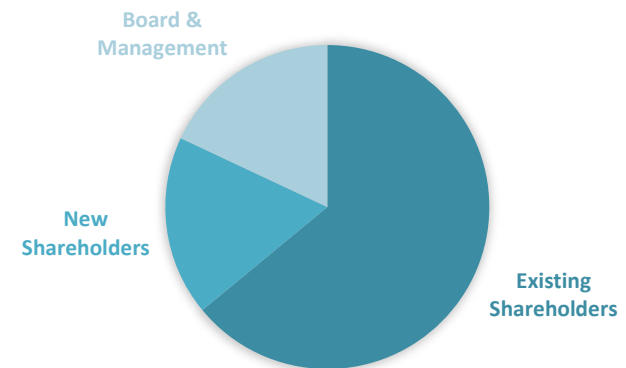
Capital Structure

ASX Ticker	CYM
Share Price (13 December 2019)	A\$0.23
Shares on Issue	56M
Market Cap (A\$M)	A\$12.9M
Performance Rights (unlisted)	12.4M
Cash (30 September 2019)	A\$2.4M
Cash (30.09.19 + December Placement)	A\$4.7M
Debt	-

Board and Management

Non- Executive Chair	Gary Comb
Executive Director	Barry Cahill
Non-Executive Director	Nicholas Rowley
CFO and Company Sec	Wayne Apted

Capital Structure



Cyprium Overview

- Cue Copper Project includes Mineral Resources¹ at Hollandaire and high priority drill targets
- Increase scale of Mineral Resources¹ whilst undergoing metallurgical test-work
- Highly credentialed executive management team
- Focus to acquire and develop projects with existing copper resources
- Assess other advanced stage copper projects in Australia
- Building a mid-tier Australian copper mining business
- Use innovative solutions to produce metal on site

¹Information pertaining to the Hollandaire Resource was prepared and first disclosed under JORC Code 2004 by Silver Lake Resources on 31 July 2013. It has not been updated since to comply with JORC Code 2012 on the basis that the information has not materially changed since it was last reported. Refer to Cue Copper Project Mineral Resources Table and Notes in the attached Appendices.

Cyprium Executive Team

Gary Comb

Mr Comb is an engineer with over 30 years' experience in the Australian mining industry, with a strong track record in successfully commissioning and operating base metal mines. He was Chairman of Finders Resources Limited from 2013 until its takeover in 2018. Mr Comb was previously the Managing Director of Jabiru Metals Limited and the CEO of BGC Contracting Pty Ltd.

Barry Cahill

Mr Cahill is a mining engineer with over 30 years' experience in exploration, operational mining and management. In particular his experience covers management of project development and construction from exploration drilling through project funding, commissioning and development. He was the Managing Director of Finders Resources Limited from 2013 until its takeover in 2018. Mr Cahill has previously been executive director of a number of public companies including Operations Director at Perilya Limited and Managing Director of Australian Mines Limited and Norseman Gold Plc.

Wayne Apted

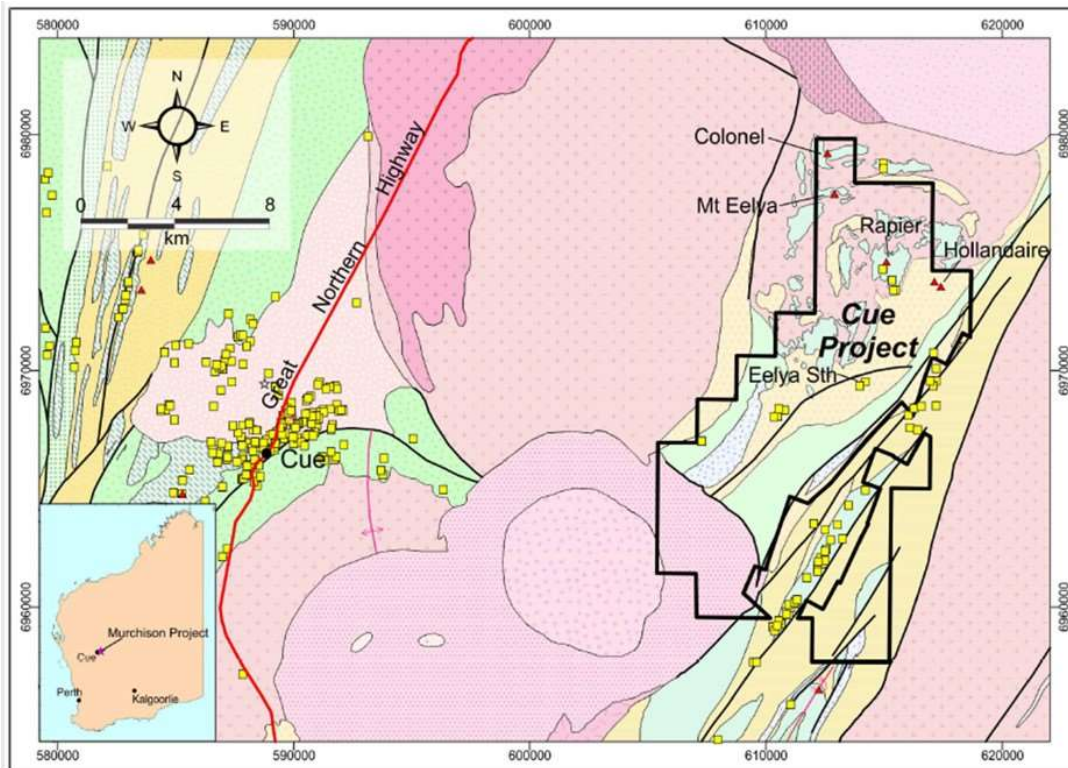
Mr Apted is a chartered accountant with over 25 years' experience in the mining industry, working in senior finance roles for Finders Resources Limited, Masan Resources Limited, Glencore plc, Xstrata plc, Normandy Mining Limited and Aurora Gold Limited, both in Australia and global locations.

Peter van Luyt

Mr van Luyt is a geologist with 30 years' experience in mining, development and exploration geology. He commenced his career as a mine geologist working in gold mines. Since 2004 he has been a contract and consultant geologist specialising in the resource development of and exploration for base metals and gold projects in Australia, Papua New Guinea and Canada. Mr van Luyt holds a Bachelor of Science degree with honours from the University of Sydney, a Post-Graduate Certificate in Geostatistics from Edith Cowan University and is a member of the Australian Institute of Geoscientists.



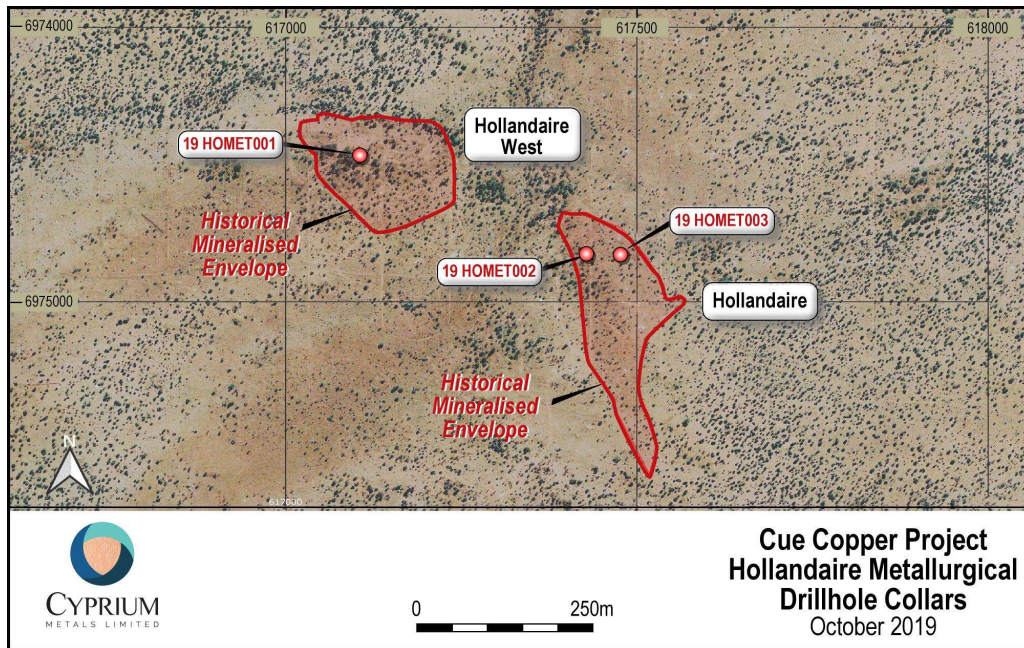
Cue Copper Project



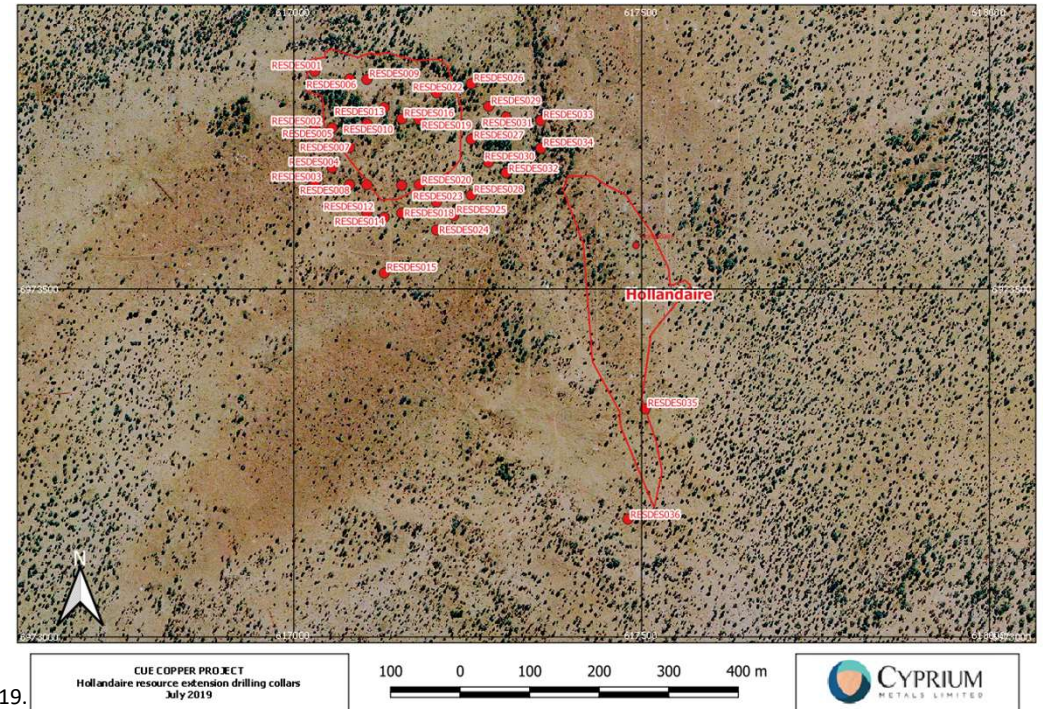
- The project acquired with a copper Mineral Resource¹
- Originally explored by Silver Lake Resources who discovered Hollandaire in 2011
- Minimal base metals exploration undertaken by previous mineral explorers as they were more focused on gold
- Initial review of the mineralogy indicates that it is favourable to sulphide heap leach processing techniques
- The Hollandaire Mineral Resource¹ remains open in multiple directions
- A number of high priority exploration targets to pursue

Hollandaire Drill Programmes

Metallurgical Holes completed² September 2019

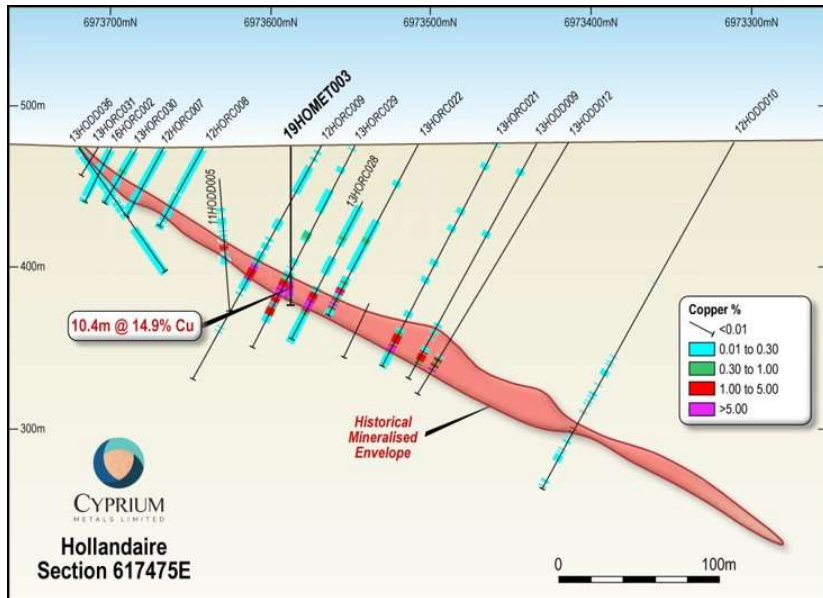


Resource Extension Holes completed⁵ September 2019



²Information pertaining to the intercepts were taken from an ASX Release by Cyprium Metals on 14 October 2019.

Hollandaire Mineralisation



- Hollandaire was discovered in 2011 by Silver Lake Resources
- A follow up drill campaign led to a maiden Resource¹ Estimate (JORC 2004)
- Historical Indicated Resource¹ (JORC 2004) of 1.9Mt @ 2.0% Cu
- Best intercepts³ include
 - 9.3m @ 15.4% Cu, 2.0g/t Au & 29.0 g/t Ag from 61 metres (drill hole 11HOD009)
- Metallurgical drillhole completed by Cyprium
- Intercept² of
 - 10.4m @ 14.9% Cu in drill hole 19HOMET003 from 84.5m downhole including:
 - 4.5m @ 21.9% Cu with 1.2 g/t Au and 46.4 g/t Ag from 90.4m

³Information pertaining to the intercepts were taken from an ASX Release by Musgrave Minerals on 25 November 2015.



Metallurgical Testwork

- Column test work on Hollandaire massive sulphide mineralisation
- Test work conducted to determine optimal copper extraction method
- Copper has leached into solution at room temperature
- Solution produced within one hour
- Test work ongoing
- Further columns utilizing different parameters to commence



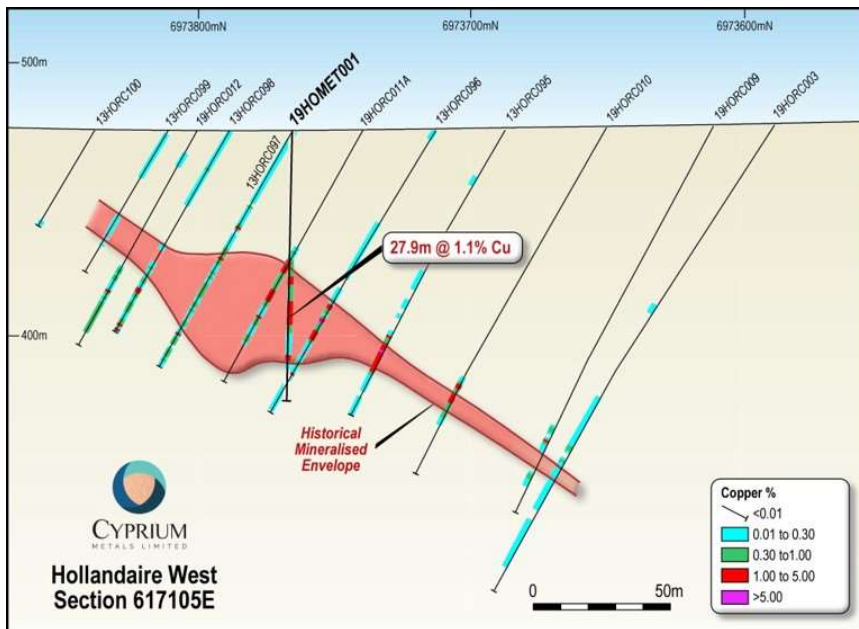
Hollandaire West



- Mineralisation is open at depth, to the west and partially to the east
- Best historical mineralisation intercepts⁴ include;
 - 15m @ 2.5% Cu, 0.4g/t Au (drill hole 13HORC095),
 - 12m @ 2.2% Cu, 0.2g/t Au (drill hole 13HORC080),
 - 10m @ 3.3% Cu, 0.3g/t Au (drill hole 13HORC088),
 - 9m @ 1.9% Cu, 0.2g/t Au (drill hole 13HORC085).

⁴Information pertaining to the intercepts and the diagram were taken from an ASX Release by Musgrave Minerals on 24 March 2016.

Hollandaire West



- CYM Phase 1 drilling completed
- Best mineralisation intercepts⁵ include;
- 5m @ 2.3% Cu in drill hole 19HORC006 from 50m downhole including:
 - 3m @ 3.4% Cu with 0.3 g/t Au and 13.3 g/t Ag from 51m;
- 16m @ 0.8% Cu from 59m including:
 - 7m @ 1.4% Cu with 0.1 g/t Au and 17.5 g/t Ag from 59m; and
- 8m @ 0.9% Cu from 76m including:
 - 1m @ 5.2% Cu from 79m
- 12m @ 1.3% Cu in drill hole 19HORC005 from 101m downhole including:
 - 8m @ 1.8% Cu with 0.2 g/t Au and 13.1 g/t Ag from 104m
- 19m @ 1.1% Cu in drill hole 19HORC010 from 106m downhole including:
 - 8m @ 1.9% Cu with 0.9 g/t Au and 13.7 g/t Ag from 109m
- 30m @ 0.7% Cu in drill hole 19HORC014 from 77 m downhole including:
 - 1m @ 1.0% Cu with 0.2 g/t Au and 5.0 g/t Ag from 80m and
 - 6m @ 2.0% Cu with 0.2 g/t Au and 6.7 g/t Ag from 84m

⁵Information pertaining to the intercepts were taken from an ASX Release by Cyprium Metals on 26 September 2019.

Exploration Potential

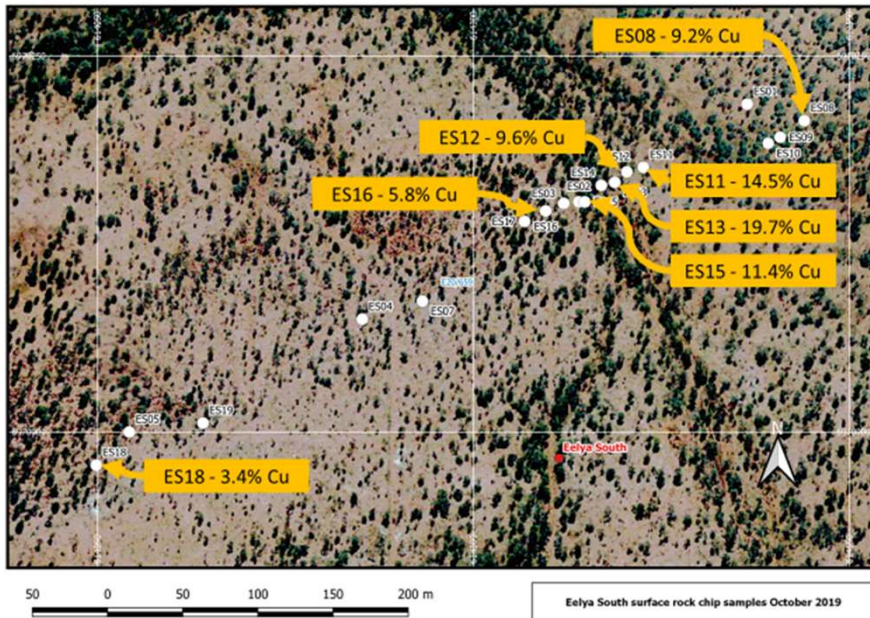


Rapier West Rock Hand Specimen October 2019



Eelya South Rock Hand Specimen October 2019

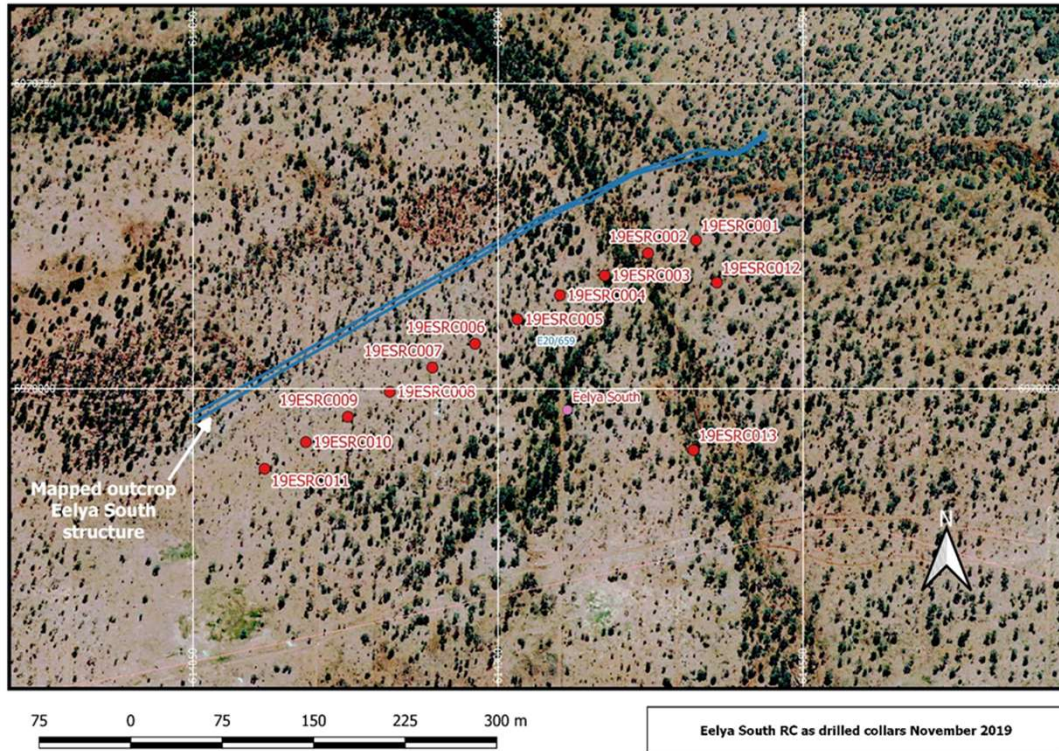
Eelya South Surface Sampling



- CYM high grade copper surface samples
- Best mineralisation assays⁶ include;
 - 19.7% Cu in surface sample ES13 including 0.9 g/t Au and 32.5 g/t Ag
 - 14.5% Cu in surface sample ES11 including 2.7 g/t Au and 14.0 g/t Ag
 - 11.4% Cu in surface sample ES15 including 0.7 g/t Au and 55.5 g/t Ag
 - 9.6% Cu in surface sample ES12 including 4.1 g/t Au and 47.5 g/t Ag
 - 9.2% Cu in surface sample ES08 including 0.8 g/t Au and 19.5 g/t Ag

⁶Information pertaining to the intercepts were taken from an ASX Release by Cyprrium Metals on 4th November 2019.

Eelya South Drill Programmes



- RC drilling programme at the Eelya South prospect conducted during November and December 2019.
- It is being conducted in multiple phases to allow for the mineralisation results from the assays to be included in the planning for the subsequent drilling programmes.
- The assay results from Eelya South phases 1 and 2 are expected at the beginning of January 2020.
- Initial RC drilling at the Eelya South prospect included an additional 220 metre drillhole, 19HORC013, that will be utilised for a downhole geophysical survey to test for potential mineralisation extensions.

Eelya South Drill Rock Chips



Eelya South RC Drilling Rock Chips: ESRC001 38-39m

Eelya South RC Drilling Rock Chips: ESRC001 39-40m



Completed Work Programme 2019

- Hollandaire resource extension phase 1 of 4,038 metres of RC drilling, assays received
- Hollandaire metallurgical drilling 330 metres diamond drilling, assays received
- Twinned diamond and RC holes to check the mineralised intersections
- Regional geochemical sampling programme commenced
 - Eelya South surface samples assays received
 - Rapier West geochemistry infill sampling underway
- Geophysical review commenced
- Metallurgical test work underway with copper leaching occurring in first column
- Completed Eelya South RC Drilling Phase 1 and Phase 2 for 1,138 metres

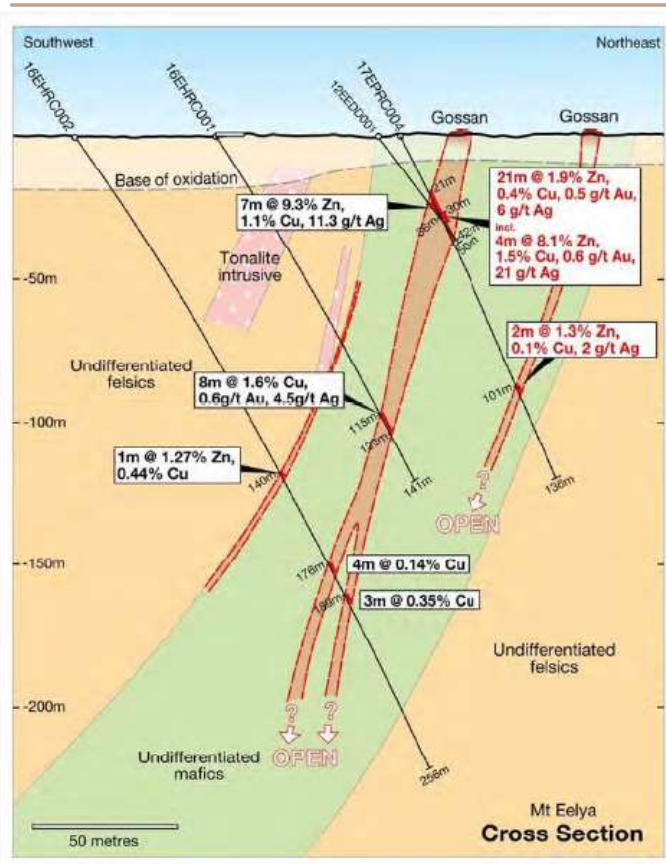


Next Steps 2020

- Further column tests have commenced and results expected early 2020
- Metallurgical diagnostic testing results
- Regional targets assay results to be received from January 2020
 - Regional drilling programme at the Eelya South prospect
 - Regional drilling programme at the Rapier prospect
- Follow up downhole geophysics to be conducted as drilling progresses
- Resource evaluation update to JORC Code 2012 to be completed in 2020
- Follow up drilling Hollandaire, Hollandaire West, Eelya South and Rapier West
- Drilling regional targets Mount Eelya and Colonel.



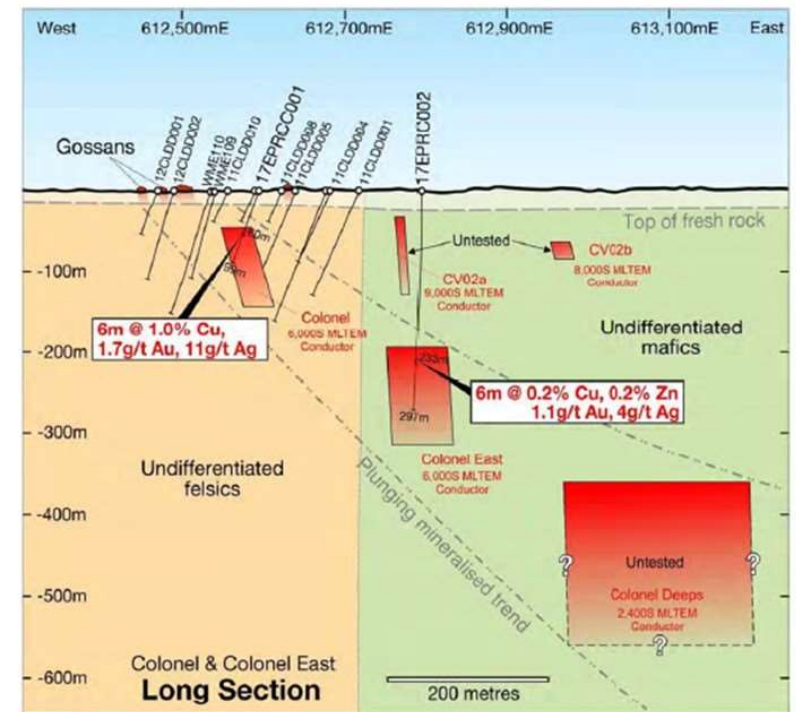
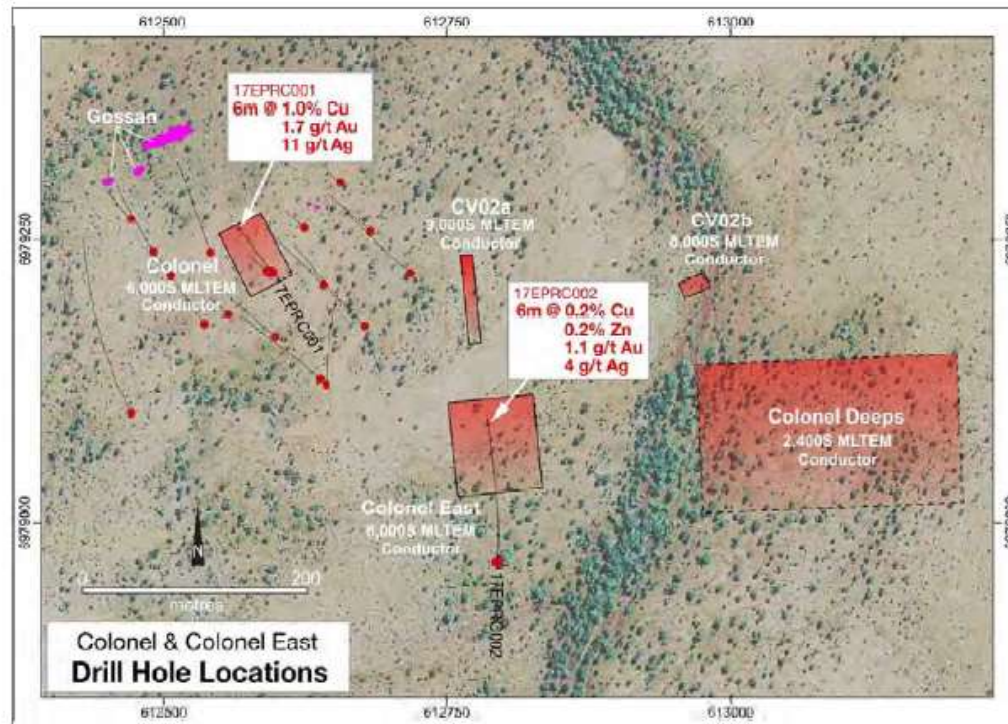
Mount Eelya



- Mt Eelya cross-section showing drillhole intersections and interpreted gossan/sulphide relationships
- Mt Eelya 3D block diagram showing drill holes, significant intersections, gossans, VTEM conductors and DHEM targets
- Best intercepts⁷ of;
 - 7m @ 9.3% Zn, 1.1% Cu, 11.3g/t Ag from 29m downhole (drill hole 12EEDD001)
 - 8m @ 1.6% Cu, 0.6g/t Au, 4.5g/t Ag from 115m downhole (drill hole 16EHRC001)
 - 16m @ 3.1% Zn, 0.2% Cu from 12m downhole (drill hole 17EPRC005)
 - incl. 2m @ 18.1% Zn, 0.5% Cu from 21m downhole

⁷Information pertaining to the intercepts were taken from an ASX Release by Musgrave Minerals on 26 June 2017.

Colonel & Colonel East



⁷Information pertaining to the diagrams and intercepts were taken from an ASX Release by Musgrave Minerals on 26 June 2017.

Exploration Potential

- Tenements considered highly prospective for further mineralisation - identified targets for ranking and investigation in 2020
- Potential to increase mineral resources¹
- Ongoing review of regional tenements to add to mineral resources¹
- Geophysical and geochemical programmes to search for other potential mineralisation targets
- Progress the search for similar style targets in other regions



APPENDICES



Cue Copper Mineral Resources

30 June 2013 JORC 2004	Indicated Resources			Inferred Resources			Total Resources		
	Ore Tonnes	Grade	Total Tonnes	Ore Tonnes	Grade	Total Tonnes	Ore Tonnes	Grade	Total Tonnes
	'000s	%	Cu 000s	'000s	%	Cu 000s	'000s	%	Cu 000s
Hollandaire Copper	1,891.3	2.0	37.1	122.4	1.4	1.6	2,013.7	1.9	38.7

Table 1 | Hollandaire Copper Mineral Resource Estimate at 0.5% copper cut-off reported by Silver Lake Resources on 31 July 2013

The Hollandaire copper resource⁸ was discovered in 2011 by Silver Lake Resources Limited (ASX: SLR) and a maiden Mineral Resource¹ estimate (JORC Code 2004) was estimated in 2013. CYM believes there is potential to upgrade the remaining inferred material to indicated and to identify further mineralisation as the sulphide lodes are open down dip/plunge.

A 2004 JORC compliant Mineral Resource⁸ estimate using a 0.5% copper cut-off was completed by Silver Lake Resources Ltd in 2013. The Hollandaire Mineral Resource⁸ as reported by Silver Lake Resources Limited in 31 July 2013 is detailed in Table 1.

⁸2004 JORC Code Compliant Mineral Resource see Table 1 as reported by CYM 11th July 2019. Information pertaining to the Hollandaire Resource was prepared and first disclosed under JORC Code 2004 by Silver Lake Resources on 31 July 2013. It has not been updated since to comply with JORC Code 2012 on the basis that the information has not materially changed since it was last reported.

Cue Exploration History

- Copper mineralised gossan's identified in the early 1970s
- Westgold Resources and Tectonic Resources explored the area from the 1980s to 2007
 - Focussed on gold exploration
- Silver Lake Resources acquired the project from Tectonic Resources in 2007
 - Focussed on gold but did include multi element geochemistry that identified the Hollandaire prospect
 - Commenced air-core drilling and discovered Hollandaire in 2011
 - Resource definition drilling undertaken and a resource¹ estimate generated late 2012
- Musgrave Minerals acquired the project in late 2015 and commenced fieldwork the same year
- Musgrave Minerals focussed on gold exploration to the south of the Cue Project and optioned the copper rights to Cyprium Metals in early 2019

Cue Exploration History

- Initial work by Musgrave focussed on electromagnetic re-interpretation and drilling at Hunky Dory, Mt Eelya and extensional work at Hollandaire
- Significantly the first hole at Mt Eelya⁷ intersected 8 metres of massive sulphides assaying 1.6% Cu. A subsequent hole intersected significant intervals of zinc mineralisation with grades up to 18.1% Zn
- Last work completed by Musgrave was surface geophysical moving loop transient electromagnetic survey (MLTEM) over 14 proposed drill sites in 2017
- Previous work completed in 2016 included the drilling of 12 out of 22 proposed reverse circulation drill holes co-funded by the WA Government. Results⁷ included 6 metres of 1.0% Cu, 1.7 g/t Au and 11 g/t Ag from 60 metres down hole at the Colonel Prospect
- Musgrave subsequently focussed on gold exploration at their Break of Day and Leviticus discoveries to the south of the Cue project, minimal work has been completed on the base metals prospects since October 2017

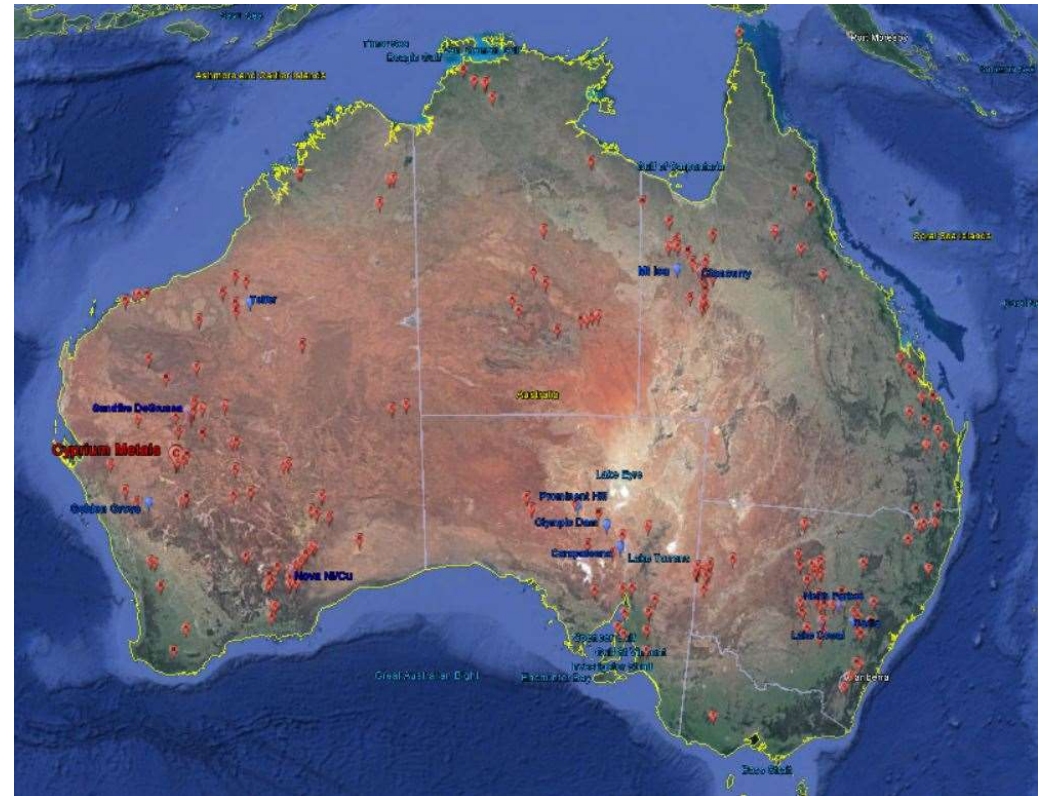
Cyprium Exploration Strategy

- Hollandaire extensional drilling to increase the resource¹ base where known resources are open in a number of directions
- Project review over many prospects are being prioritised for further investigative field work
- Geophysics to be conducted on known conductors and downhole copper grade intersections
- Follow up drilling on previous promising drill results at Hollandaire West and East, Mt Eelya/ Eelya South, Colonel and Colonel East, Rapier and Rapier West
- Confirmatory metallurgical testwork on treatment methods for Hollandaire is underway
- Further broad based exploration methods to be conducted on other identified prospects and to identify further prospects in the Cue project tenements



Key Portfolio Criteria

- Focused on Australian projects
- Projects preferably to have sulphide mineralisation with high sulphide content – copper or polymetallic with copper (pyrite, pyrrhotite etc)
- Projects to have an existing copper resources with growth potential
- Sulphide Heap Leach (SHL) is ideal for stranded projects, problematic mineralogy, lack of scale and/or challenging locations
- Optimising existing operations by converting to SHL



Copper Sulphide Heap Leach (SHL)

- Heap leach of copper sulphide minerals
- Sulphide leaching produces heat (exothermic) and acid
- Heap temperatures are controlled by aeration and water irrigation rates
- Leached copper in solution is processed by solvent extraction-electrowinning (SX-EW)
- LME Grade A copper cathode produced at more than 99.99% purity
- Copper depleted acid solution is partially neutralised and returned to the heaps



Benefits of SHL

- Low operating costs - simple process that requires acid, power and water
- Power is the main processing cost with low reagent costs
- Modest capital requirements for project development and construction - no concentrator or tailings dam
- Final product is LME grade copper cathode - low transport costs and not subject to smelter refining charges
- Modular SX-EW processing plants enables scale up/down and relocation of plant which enhances potential to develop a pipeline of projects
- Processing is closed circuit with no requirement for a tailings dam
- SHL to benefit from technological improvements - use of underground water, solar power and process automation to optimise operating controls whilst lowering operating costs

Copper Sulphide Heap Leach

