



## **ASX Announcement**

Friday 7<sup>th</sup> February 2020

# **Hot Chili Confirms Rapid Growth of the Cortadera Cu-Au Discovery**

## ***Expansion Drilling Now Testing Southern Extension to Main Porphyry***

### **ASX CODE**

HCH

### **Contact**

Mr Christian Easterday  
Managing Director

E: [admin@hotchili.net.au](mailto:admin@hotchili.net.au)

[www.hotchili.net.au](http://www.hotchili.net.au)

### **Highlights**

- The Company has compiled and modelled all results from its successful 2019 drilling campaign, which confirm that Cortadera remains open and growing at a faster rate than anticipated
- The existing discovery zone at Cortadera is now considered capable of growing toward a Tier 1 classification (+5Mt of contained copper) on its own
- Final results from the Company's 2019 diamond drilling have provided further encouragement, unexpectedly recording a strong end-of-hole result from diamond hole CRP0032D which was abandoned late last year owing to significant deviation from its intended target:

#### **Significant Drill Result for CRP0032D**

### **92m grading 0.5% copper & 0.2g/t gold at end of hole**

from 648m depth and ending in mineralised porphyry

- In addition, remaining results from shallow Reverse Circulation drilling in 2019 also included another high grade result associated with chalcocite enrichment zones:

### **20m grading 1.0% copper & 0.2g/t gold**

from 102m depth

- Drilling and platform clearing activities are advancing well and the Company is fast tracking results from its current expansion diamond drill hole CRP0040D, the first to test the southern extension to the Main porphyry
- First results from the commencement of the 2020 drilling programme are expected to be received in the coming weeks



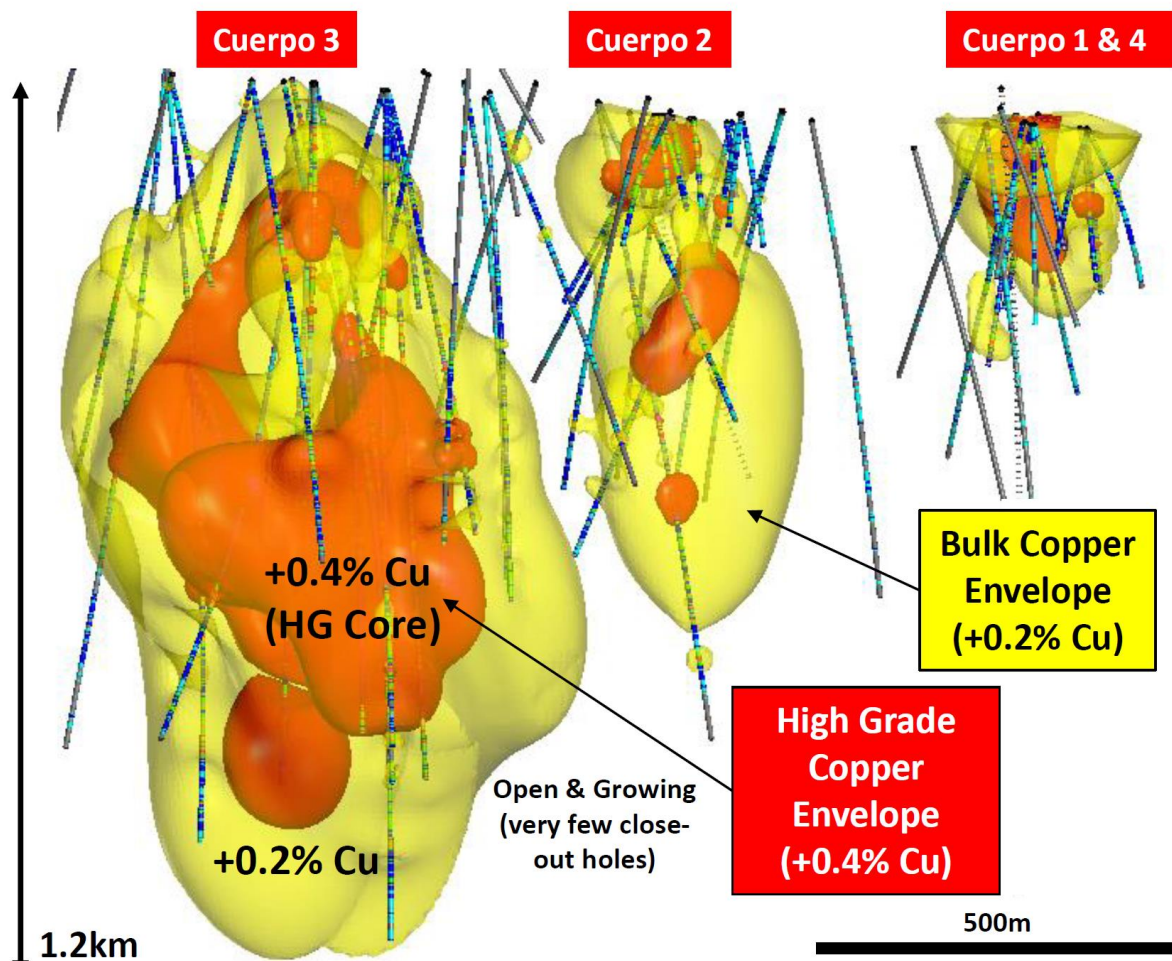
Hot Chili Limited (ASX code HCH) ("Hot Chili" or "Company") is pleased to announce that its view on the growth potential of the Cortadera copper-gold porphyry discovery in Chile has lifted significantly following compilation and modelling of its 2019 drilling campaign.

Company estimates of Cortadera's potential resource size have now more than doubled since the announcement of a deal to acquire the privately-held major porphyry discovery in February of 2019.

Importantly, modelling highlights that the discovery zone alone has clear potential to grow towards a Tier 1 classification (+5Mt contained copper) with the largest porphyries open in all key directions as displayed in Figure 1 below.

Expansion diamond drilling is well underway for 2020, aimed at facilitating a much larger first resource estimate than originally planned at Cortadera.

**Cortadera is considered a premier discovery that looks set to position Hot Chili in 2020 with one of the largest copper-gold inventories in the hands of a junior listed company globally.**



**Figure 1 Long section view looking west across the latest 3D model of Cortadera's copper distribution, which has seen rapid growth from 2019 drill success.**



## Drilling Update

Final drill results from the Company's 2019 drilling campaign have now been compiled and incorporated into a revised 4-Dimensional (4D) model, as outlined in Figures 1 to 5.

The Company's final diamond (DD) drill hole of 2019, and its second expansion hole CRP0032D, has unexpectedly delivered a significant drilling intersection of **92m grading 0.5% copper and 0.2g/t gold to end-of-hole** along the northern extent of the largest porphyry of the Cortadera discovery - Cuerpo 3.

CRP0032D was abandoned late last year owing to significant deviation in dip from its intended target. The new result has significantly broadened the width of mineralised porphyry along the northern extent of Cuerpo 3 (which remains open) and provided added confidence in the continued growth of the Cortadera discovery.

Several new significant Reverse Circulation (RC) drill results were also delivered from the remaining shallow drill programme directed across potential enrichments zones above three of Cortadera's four porphyries (Cuerpo 1, 2 and 4). These included a drill result of **20m grading 1.0% copper and 0.2g/t gold** from 102m down-hole depth at Cuerpo 1 which adds to a growing component of shallow, bulk tonnage, high grade at Cortadera.

Diamond drilling and clearing activities are well underway for 2020.

The Company's third expansion DD drill hole CRP0040D is currently at a depth of approximately 360m down-hole and is planned to extend to approximately 1,000m depth.

Importantly, CRP0040D is designed to test the southern extension to Cuerpo 3, approximately 100m away from Hot Chili's previous result in CRP0017D, which recorded **596m grading 0.5% copper and 0.2g/t gold** from 328m down-hole depth (**including 184m grading 0.7% copper and 0.3g/t gold**).

RC drill testing of two exciting large growth targets (Cuerpo 3 North and then Cortadera North) is about to commence following minor delays in completion of access clearing. The Company plans to commence the first of 6 deep RC drill holes at Cuerpo 3 North in the coming days.

**First results from CRP0040D are expected to be received in the coming weeks and the Company looks forward to providing updates on early results from first drilling across the Cuerpo 3 North target, located 500m north of Cuerpo 3.**

### For more information please contact:

**Christian Easterday**  
Managing Director

Tel: +61 8 9315 9009  
Email: [christian@hotchili.net.au](mailto:christian@hotchili.net.au)

or visit Hot Chili's website at [www.hotchili.net.au](http://www.hotchili.net.au)





Table 1 New Significant DD Drill Results at Cortadera

Hole_ID	Coordinates			Azim	Dip	Hole Depth	Intersection		Interval (m)	Copper (% Cu)	Gold (g/t Au)	Silver (ppm Ag)	Molybdenum (ppm Mo)
	North	East	RL				From	To					
CRP0030	335525	6813962	1007	44	-79	150	4	28.0	24	0.4	0.1	0.4	3
CRP0032D	336312	6813851	1090	232	-81	740	532	576	44	0.5	0.2	1.0	204
							648	739.9	92	0.5	0.2	0.9	96
CRP0034	334814	6814328	985	44	-69	220	0	24	24	0.3	0.1	0.9	6
							82	128.0	46	0.6	0.1	1.4	5
	including						102	122	20	1.0	0.2	2.3	3
CRP0037	335595	6813929	1012	109	-59	200	0	76.0	76	0.4	0.2	0.7	7

Table 2 SNL List of Best 25 Cu-Au Drill Intercepts Since January 2018  
(Ordered by Width of Drill Intersection)

Project Name	Company	Country	Hole ID	From (m)	To (m)	Interval (m)	Cu (%)	Au%
Altar	Aldebaran Resources Inc	Argentina	ALD-18-209	482	1,537	1,055	0.5	0.2
Cascabel	SolGold Plc	Ecuador	CSD-18-067	886	1,914	1,028	0.7	0.9
Cascabel	SolGold Plc	Ecuador	CSD-18-043	600	1,574	974	0.5	0.4
Cortadera	Hot Chili Limited	Chile	CRP0020D	surface	972	972	0.5	0.2
Cascabel	SolGold Plc	Ecuador	CSD-18-041-D1-D2	926	1,779	853	0.5	0.6
Cascabel	SolGold Plc	Ecuador	CSD-18-069	740	1,592	852	0.8	0.6
Timok	Zijin Mining Group Company Limited	Serbia	TC170187	1,354	2,202	848	0.8	0.2
Cortadera	Hot Chili Limited	Chile	CRP0011D	112	960	848	0.4	0.2
Cascabel	SolGold Plc	Ecuador	CSD-18-042	278	1,124	846	0.7	0.5
Cascabel	SolGold Plc	Ecuador	33-D1	736	1,560	824	0.5	0.4
AntaKori	Regulus Resources Inc	Peru	AK-19-034	165	985	820	0.5	0.2
Winu	Rio Tinto	Australia	WINU0006	46	809	763	0.4	0.7
Cortadera	Hot Chili Limited	Chile	CRP0013D	204	954	750	0.6	0.2
Winu	Rio Tinto	Australia	WINU0006	68	809	741	0.5	0.5
AntaKori	Regulus Resources Inc	Peru	AK-18-014	5	719	714	0.7	0.4
Cascabel	SolGold Plc	Ecuador	CSD-18-068	1,004	1,668	664	0.9	1.0
Cortadera	Hot Chili Limited	Chile	CRP0029D	330	979	649	0.4	0.1
AntaKori	Regulus Resources Inc	Peru	AK-18-021	127	746	619	0.7	0.4
AntaKori	Regulus Resources Inc	Peru	AK-19-031	4	614	610	0.8	1.0
Cortadera	Hot Chili Limited	Chile	CRP0017D	328	924	596	0.5	0.2
Timok	Zijin Mining Group Company Limited	Serbia	TC170177	1,310	1,867	557	1.0	0.2
Kwanika	Kwanika Copper Corporation	Canada	K-180	33	547	514	0.6	0.8
Cascabel	SolGold Plc	Ecuador	CSD-18-042	620	1,124	504	0.9	0.6
Kwanika	Kwanika Copper Corporation	Canada	K-182	25	525	500	0.7	0.8
AntaKori	Regulus Resources Inc	Peru	AK-18-026	641	1,114	473	1.2	0.2

Source- Regulus Resources (TSXV. REG) November 2019 Corporate Presentation (slide 10) as per SNL financial, SNL search criteria include: >450 m interval, primarily copper interval & reported after Jan 1, 2018. Only longest reported interval considered. Results ordered by down-hole width of drill intersection and addition of CRP0029D result.



**Hot Chili Limited**

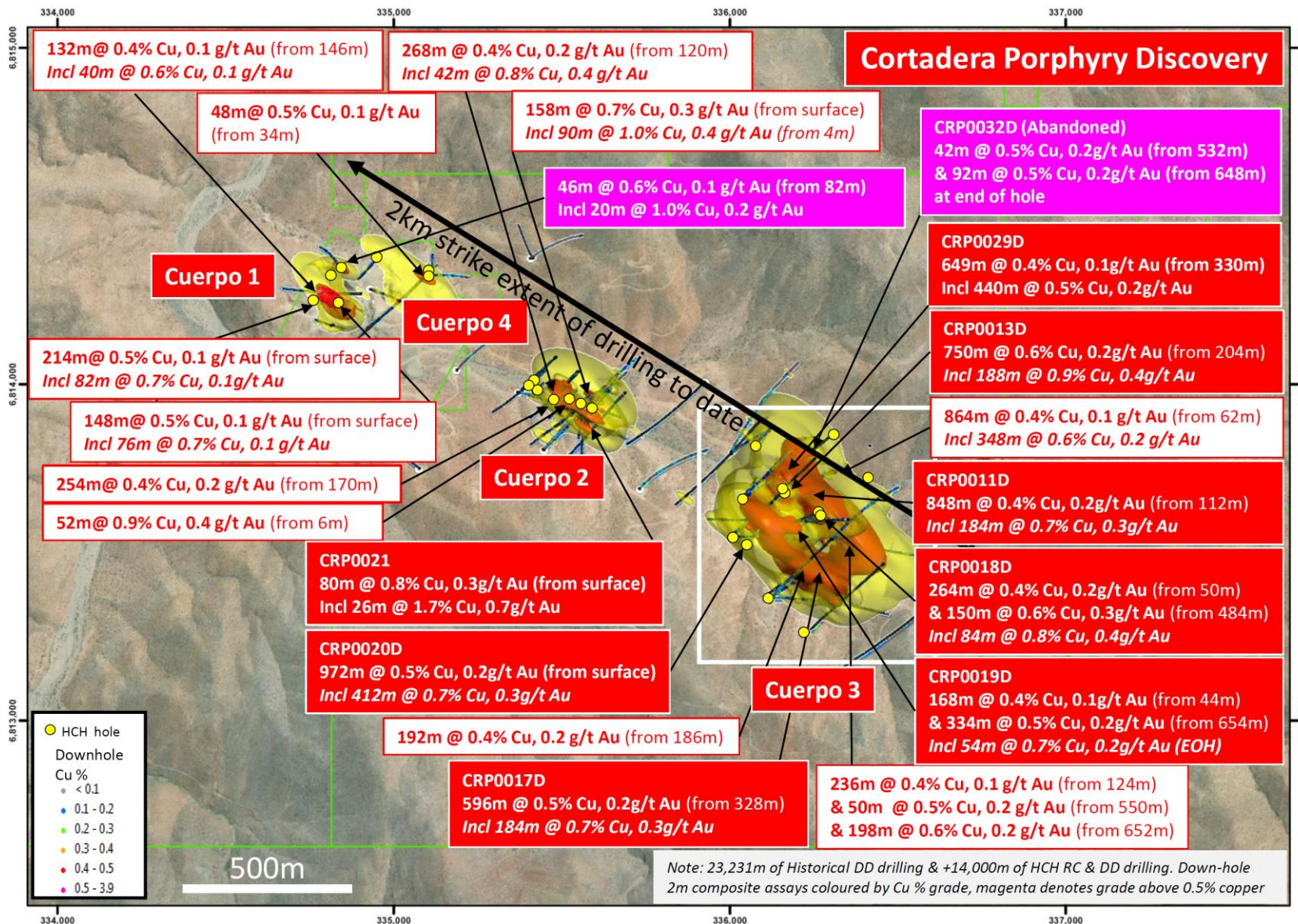
ACN 130 955 725

First Floor, 768 Canning Highway, Applecross, Western Australia 6153

PO Box 1725, Applecross, Western Australia 6953

P: +61 8 9315 9009

F: +61 8 9315 5004

[www.hotchili.net.au](http://www.hotchili.net.au)

**Figure 2** Plan view across the Cortadera discovery area displaying significant historical copper-gold DD intersections across Cuerpo 1, 2 and 3 tonalitic porphyry intrusive centres (represented by modelled copper envelopes, yellow- +0.2% Cu and red +0.4% Cu). Note the location of the inset plan area for Cuerpo3 associated with the following figures. The new HCH drilling intersection recorded in CRP0032D and CRP0034 (magenta) and previously reported HCH drill intersections (Red) CRP0029D, CRP0020D, CRP0019D, CRP0018D, CRP0017D, CRP0011D and CRP0013D are



**Hot Chili Limited**

ACN 130 955 725

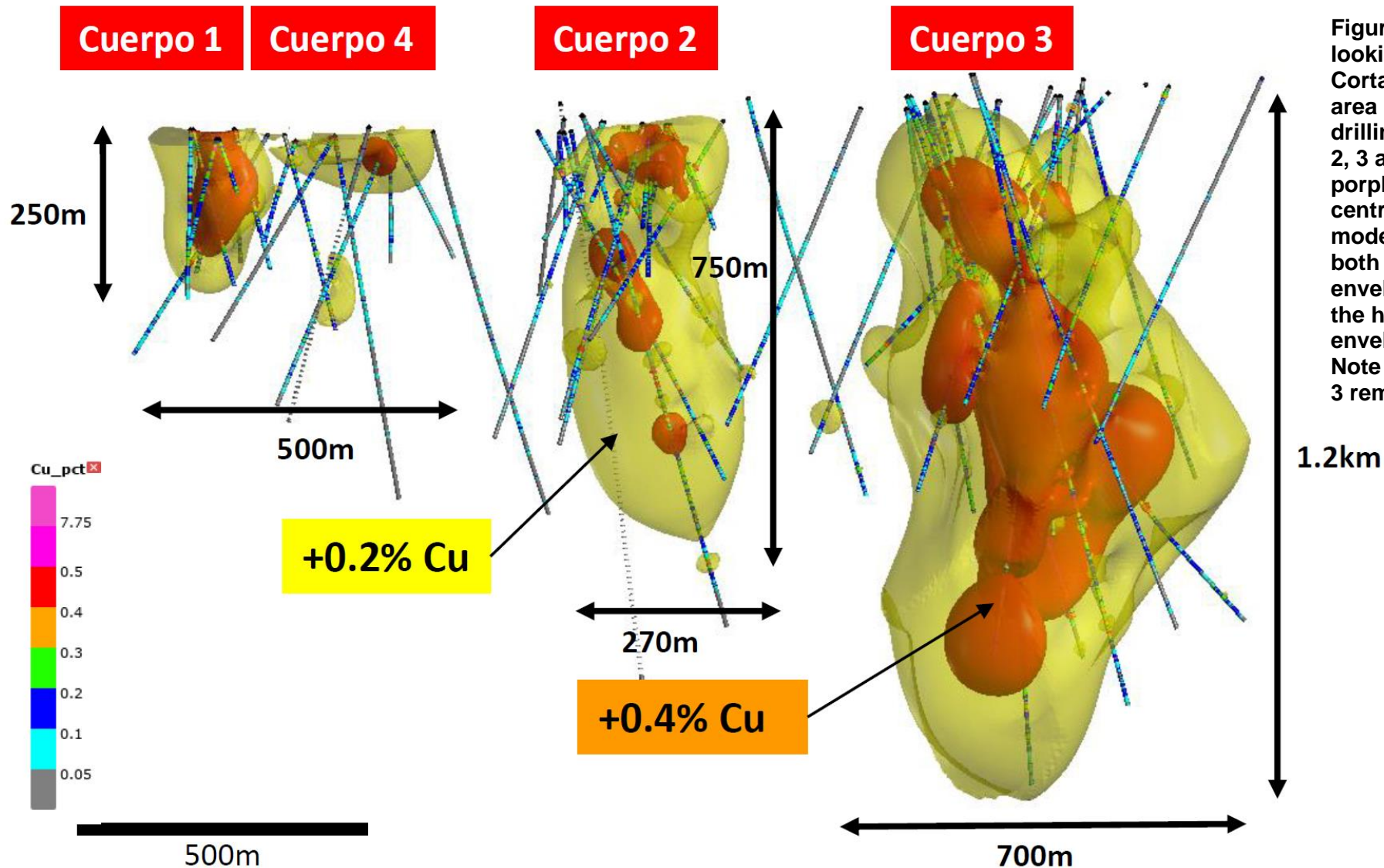
First Floor, 768 Canning Highway, Applecross, Western Australia 6153

PO Box 1725, Applecross, Western Australia 6953

P: +61 8 9315 9009

F: +61 8 9315 5004

[www.hotchili.net.au](http://www.hotchili.net.au)



**Figure 3 Long Section looking North across the Cortadera discovery area displaying all drilling across Cuerpo 1, 2, 3 and 4 tonalitic porphyry intrusive centres. Latest 3D modelling displaying both the bulk copper envelope (+0.2% Cu) and the high grade copper envelope (+0.4% Cu). Note that Cuerpo 2 and 3 remain largely open.**

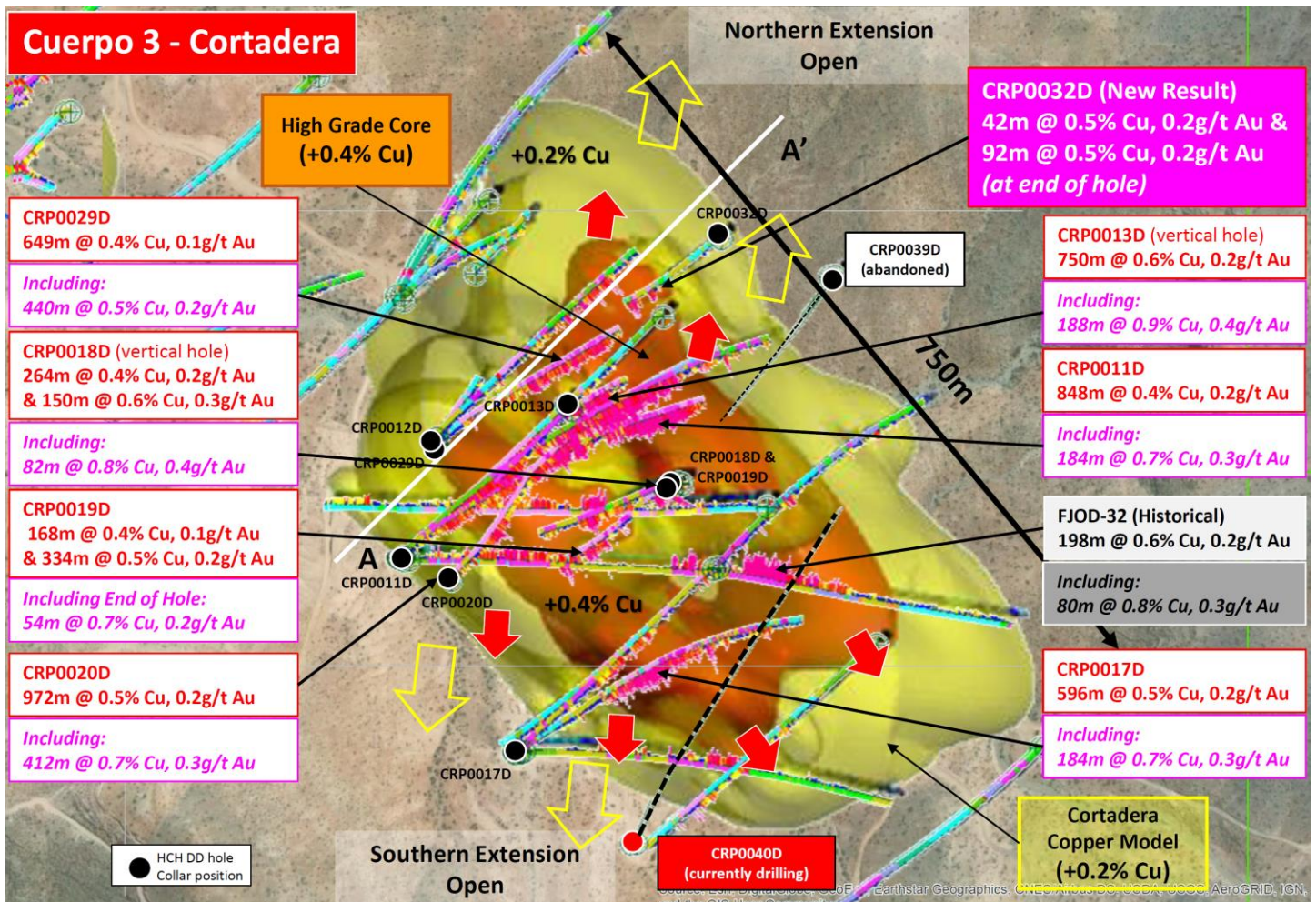


Figure 4 Plan view of Cuerpo 3 - the Main porphyry of the four porphyry centres discovered to date at Cortadera. The plan displays the location and basic geology of the mineralised tonalitic host porphyry in relation to the location of significant new results released for CRP0032D, CRP0029D, CRP0020D, CRP0018D, CRP0019D, CRP0017D, CRP0011D and CRP0013D. Note the growing extent of the modelled higher grade copper zone (red wireframe - +0.4% Cu) and the location of open boundaries for growth of the bulk copper envelope at Cortadera (yellow wireframe - +0.2% Cu).



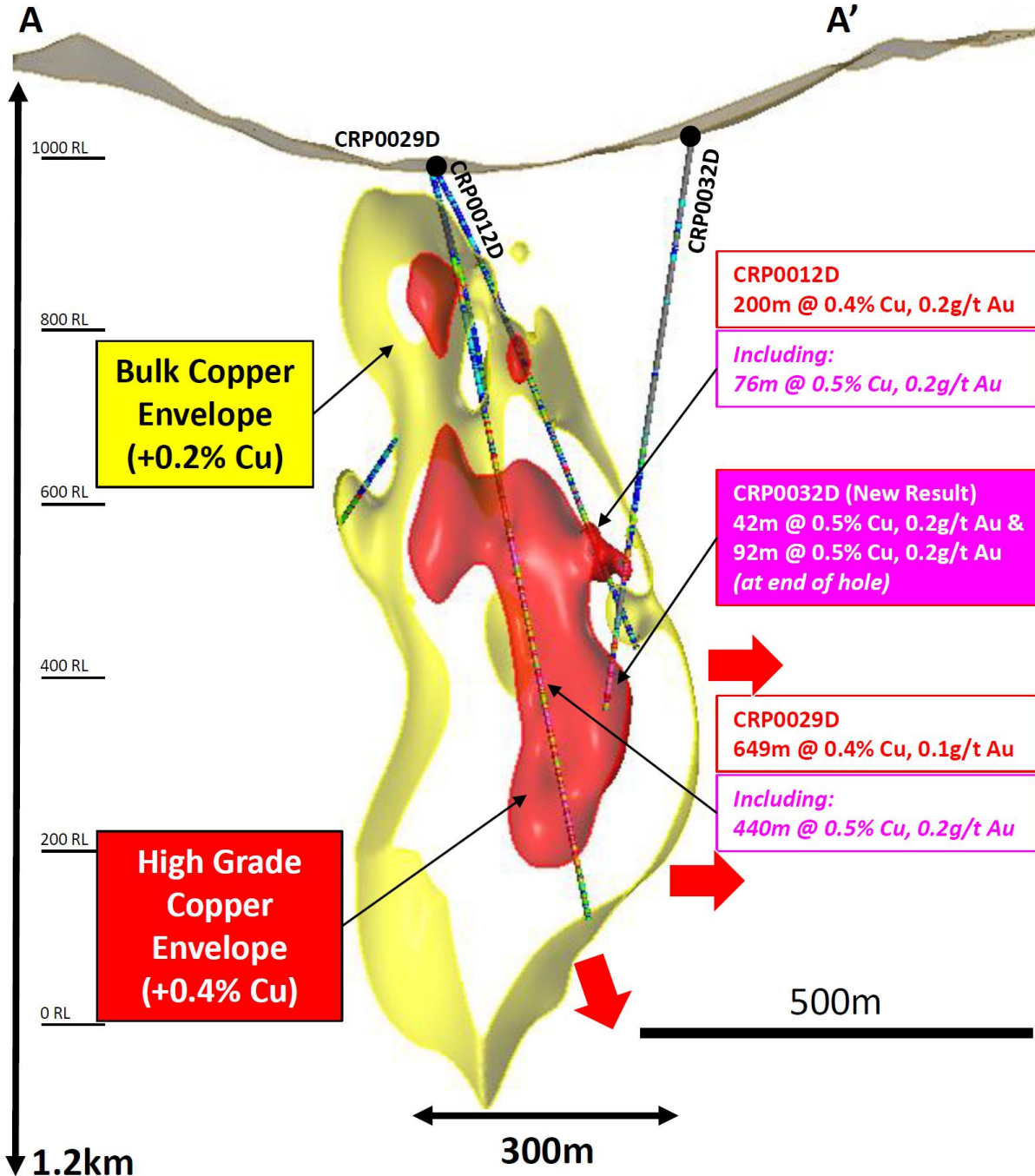


Figure 5 Type Section A displaying HCH DD drill results and recent 3D modelling of copper distribution at Cortadera. The section lies along the northern extent of Cuerpo 3, which has now broadened in width and remains open for further extension. Note the location of hole CRP0012D, CRP0029D in relation to the projection of the high grade zone from the south the section. The new result from CRP0032D has confirmed a significant width to the northern extension of the main porphyry at Cortadera.

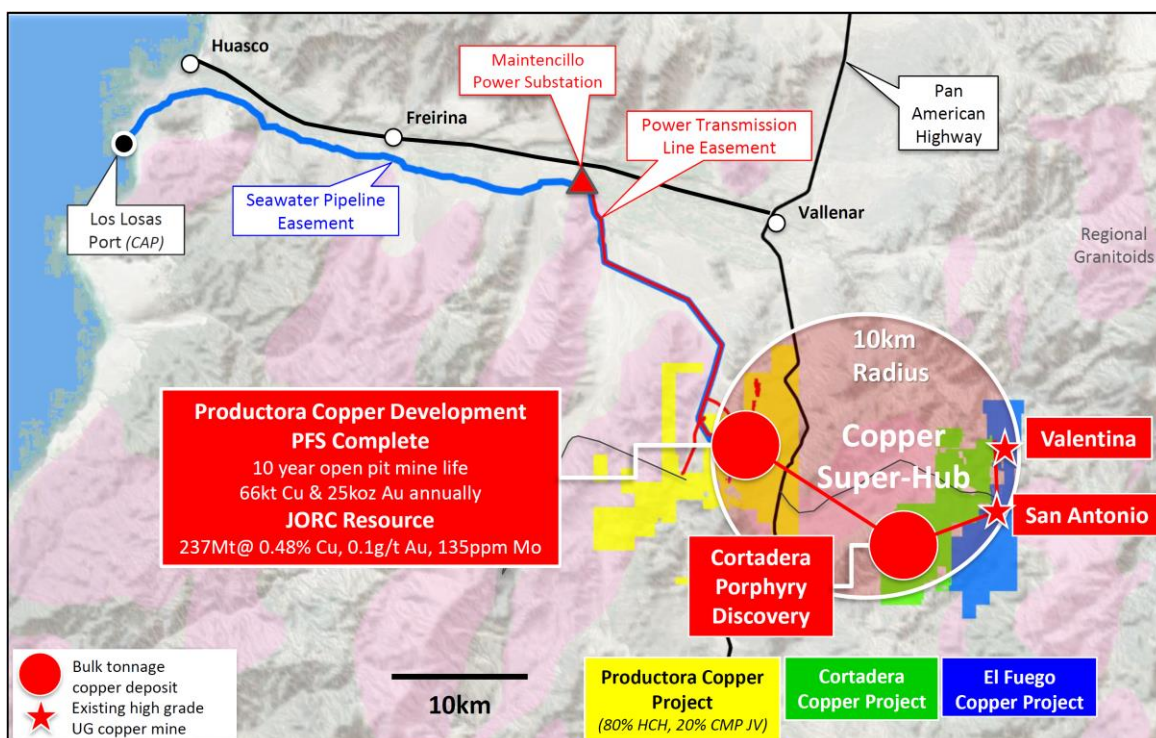




## About Cortadera

Cortadera is a privately-owned, major copper-gold porphyry discovery located 600km north of Santiago along the Chilean coastal range, where historical world-class discovery drill results were only publicly released by Hot Chili in February 2019.

Importantly, Cortadera lies 14km from the Company's large-scale Productora copper development and adjacent to the high grade El Fuego satellite copper projects, as displayed in Figure 5 below.



**Figure 6 Location of Productora and the Cortadera discovery in relation to the consolidation of new growth projects and coastal range infrastructure**

On 22 February 2019, Hot Chili announced the execution of a formal Option Agreement to acquire a 100% interest in Cortadera. In early April, the Company commenced a confirmation drilling programme comprising 17 holes.

The drilling has confirmed and extended areas of surface enrichment and wide, higher-grade, copper-gold sulphide mineralisation at depth, which had not previously been closed off by 23,000m of historical diamond drilling.

Hot Chili's recent drill holes at Cuerpo 3 (the largest of the four porphyries discovered to date) include some of the worlds' stand-out copper-gold porphyry drill results reported in recent time. The Cuerpo 3 porphyry remains open to the north, south and at depth. Significant intersections include:

- 972m grading 0.5% copper and 0.2g/t gold from surface (including 412m grading 0.7% copper and 0.3g/t gold)





- 750m grading 0.6% copper and 0.2g/t gold from 204m down-hole depth (including 188m grading 0.9% copper and 0.4g/t gold)
- 848m grading 0.4% copper and 0.2g/t gold from 112m down-hole depth (including 184m grading 0.7% copper and 0.3g/t gold)
- 864m grading 0.4% copper and 0.1g/t gold from 62m down-hole depth (including 348m grading 0.6% copper and 0.2g/t gold),
- 649m grading 0.4% copper and 0.1g/t gold from 328m down-hole depth (including 440m grading 0.5% copper and 0.2g/t gold),and
- 596m grading 0.5% copper and 0.2g/t gold from 328m down-hole depth (including 184m grading 0.7% copper and 0.3g/t gold)

Cortadera is shaping up as a globally significant standalone copper-gold project which can utilise the Productora project resources, and leverage from a central processing and combined infrastructure approach along the coastline of Chile.

The Company's recent confirmation of a higher grade bulk tonnage underground development opportunity in combination with shallow, high grade bulk tonnage open pit sources - places Cortadera in a unique position amongst potential large-scale global copper-gold developments.





## Qualifying Statements

### **Competent Person's Statement- Exploration Results**

Exploration information in this Announcement is based upon work compiled by Mr Christian Easterday, the Managing Director and a full-time employee of Hot Chili Limited whom is a Member of the Australasian Institute of Geoscientists (AIG). Mr Easterday has sufficient experience that is relevant to the style of mineralisation and type of deposit under consideration and to the activity which he is undertaking to qualify as a 'Competent Person' as defined in the 2012 Edition of the 'Australasian Code for Reporting of Exploration Results, Mineral Resources and Ore Reserves' (JORC Code). Mr Easterday consents to the inclusion in the report of the matters based on their information in the form and context in which it appears.

### **Competent Person's Statement- Mineral Resources**

The information in this Announcement that relates to the Productora Project Mineral Resources, is based on information compiled by Mr J Lachlan Macdonald and Mr N Ingvar Kirchner. Mr Macdonald is employed by AMC Consultants (AMC), and is a Member of the Australasian Institute of Mining and Metallurgy (AusIMM). Mr Kirchner is employed by AMC Consultants (AMC). AMC has been engaged on a fee for service basis to provide independent technical advice and final audit for the Productora Project Mineral Resource estimates. Mr Kirchner is a Fellow of the Australasian Institute of Mining and Metallurgy (AusIMM) and is a Member of the Australian Institute of Geoscientists (AIG). Both Mr Macdonald and Mr Kirchner have sufficient experience that is relevant to the style of mineralisation and type of deposit under consideration and to the activity being undertaken to qualify as a Competent Person as defined in the 2012 Edition of the 'Australasian Code for Reporting of Exploration Results, Mineral Resources and Ore Reserves' (the JORC Code 2012).

### **Competent Person's Statement- Ore Reserves**

The information in this Announcement that relates to Productora Project Ore Reserves, is based on information compiled by Mr Carlos Guzmán, Mr Boris Caro, Mr Leon Lorenzen and Mr Grant King. Mr Guzmán is a Fellow of the Australasian Institute of Mining and Metallurgy (AusIMM), a Registered Member of the Chilean Mining Commission (RM- a 'Recognised Professional Organisation' within the meaning of the JORC Code 2012) and a full time employee of NCL Ingeniería y Construcción SpA (NCL). Mr Caro is a former employee of Hot Chili Ltd, now working in a consulting capacity for the Company, and is a Member of the Australasian Institute of Mining and Metallurgy (AusIMM) and a Registered Member of the Chilean Mining Commission. Mr Lorenzen is employed by Mintrex Pty Ltd and is a Chartered Professional Engineer, Fellow of Engineers Australia, and is a Fellow of the Australasian Institute of Mining and Metallurgy (AusIMM). Mr King is employed by AMEC Foster Wheeler (AMEC FW) and is a Member of the Australasian Institute of Mining and Metallurgy (AusIMM). NCL, Mintrex and AMEC FW have been engaged on a fee for service basis to provide independent technical advice and final audit for the Productora Project Ore Reserve estimate. Mr. Guzmán, Mr Caro, Mr Lorenzen and Mr King have sufficient experience which is relevant to the style of mineralisation and type of deposit under consideration, and to the activity which they are undertaking to qualify as a Competent Person as defined in the 2012 Edition of the 'Australasian Code for Reporting of Exploration Results, Mineral Resources and Ore Reserves'.

### **Forward Looking Statements**

This Announcement is provided on the basis that neither the Company nor its representatives make any warranty (express or implied) as to the accuracy, reliability, relevance or completeness of the material contained in the Announcement and nothing contained in the Announcement is, or may be relied upon as a promise, representation or warranty, whether as to the past or the future. The Company hereby excludes all warranties that can be excluded by law. The Announcement contains material which is predictive in nature and may be affected by inaccurate assumptions or by known and unknown risks and uncertainties and may differ materially from results ultimately achieved.

The Announcement contains "forward-looking statements". All statements other than those of historical facts included in the Announcement are forward-looking statements including estimates of Mineral Resources. However, forward-looking statements are subject to risks, uncertainties and other factors, which could cause actual results to differ materially from future results expressed, projected or implied by such forward-looking statements. Such risks include, but are not limited to, copper, gold and other metals price volatility, currency fluctuations, increased production costs and variances in ore grade recovery rates from those assumed in mining plans, as well as political and operational risks and governmental regulation and judicial outcomes. The Company does not undertake any obligation to release publicly any revisions to any "forward-looking statement" to reflect events or circumstances after the date of the Announcement, or to reflect the occurrence of unanticipated events, except as may be required under applicable securities laws. All persons should consider seeking appropriate professional advice in reviewing the Announcement and all other information with respect to the Company and evaluating the business, financial performance and operations of the Company. Neither the provision of the Announcement nor any information contained in the Announcement or subsequently communicated to any person in connection with the Announcement is, or should be taken as, constituting the giving of investment advice to any person.

# JORC Code, 2012 Edition – Table 1 report template

## Section 1 Sampling Techniques and Data

(Criteria in this section apply to all succeeding sections.)

Criteria	JORC Code explanation	Commentary
Sampling techniques	<ul style="list-style-type: none"> <li><i>Nature and quality of sampling (eg cut channels, random chips, or specific specialised industry standard measurement tools appropriate to the minerals under investigation, such as down hole gamma sondes, or handheld XRF instruments, etc). These examples should not be taken as limiting the broad meaning of sampling.</i></li> <li><i>Include reference to measures taken to ensure sample representivity and the appropriate calibration of any measurement tools or systems used.</i></li> <li><i>Aspects of the determination of mineralisation that are Material to the Public Report.</i></li> <li><i>In cases where 'industry standard' work has been done this would be relatively simple (eg 'reverse circulation drilling was used to obtain 1 m samples from which 3 kg was pulverised to produce a 30 g charge for fire assay'). In other cases more explanation may be required, such as where there is coarse gold that has inherent sampling problems. Unusual commodities or mineralisation types (eg submarine nodules) may warrant disclosure of detailed information.</i></li> </ul>	<p>This announcement updates activities at Hot Chili Limited's ("Hot Chili" or the "Company") Cortadera Project. This includes assay results from the current drilling programme being undertaken at the Cortadera copper-gold porphyry discovery.</p> <p>Reverse circulation drilling (RC) was used to produce a 1m bulk sample and representative 2m cone split samples (nominally a 12.5% split) were collected using a cone splitter.</p> <p>Geological logging was completed, and mineralised sample intervals were determined by the geologists to be submitted as 2m samples for RC drilling. In RC intervals assessed as unmineralised, 4m composite (scoop) samples were collected for laboratory for analysis. If these 4m composite samples return results with anomalous grade the corresponding original 2m split samples are then routinely submitted to the laboratory for analysis.</p> <p>The samples were crushed and split at the laboratory, with up to 3kg pulverised, with a 50g samples analysed by Industry standard methods.</p> <p>The sampling techniques used are deemed appropriate for exploration and resource development purposes for this type of mineralisation.</p> <p>The data compiled for historical drilling at the Cortadera project has been collated from SCM Carola documents.</p> <p>Historical drilling at the Cortadera project is diamond core (DD). There have been 29 diamond holes drilled for a total of 19,268m. A further 10 diamond holes for a further 3,963m has been completed along-strike at Purisima..</p> <p>Historical and Hot Chili diamond sampling was predominantly HQ3 (61.24mm) half core. 99% of the sample data is comprised of 2m composited samples (which were taken at every 2m interval).</p> <p>These results comprise 30g fire assay for gold, and for copper, either 4-acid or 3-acid digest followed by either an ICP-MS, ICP-AAS or HF-ICP-AES.</p> <p>Hot Chili Limited ("the Company") has verified as much as possible the location, orientation, splitting and sampling methods, analytical techniques, and assay values. The Company has not</p>



Criteria	JORC Code explanation	Commentary
		completed a comprehensive review of the SCM Carola QA/QC data but notes that a substantial amount of QAQC data is available for review and the Company has undertaken a high level initial review of the SCM Carola QA/QC data.
<i>Drilling techniques</i>	<ul style="list-style-type: none"> <li><i>Drill type (eg core, reverse circulation, open-hole hammer, rotary air blast, auger, Bangka, sonic, etc) and details (eg core diameter, triple or standard tube, depth of diamond tails, face-sampling bit or other type, whether core is oriented and if so, by what method, etc).</i></li> </ul>	<p>Hot Chili's Reverse Circulation drilling used 140 to 130mm diameter drill bits. RC drilling employed face sampling hammers ensuring contamination during sample extraction is minimised.</p> <p>Historical and Hot Chili diamond drilling used HQ bits (HQ; 96mm external, 61.24mm internal).</p>
<i>Drill sample recovery</i>	<ul style="list-style-type: none"> <li><i>Method of recording and assessing core and chip sample recoveries and results assessed.</i></li> <li><i>Measures taken to maximise sample recovery and ensure representative nature of the samples.</i></li> <li><i>Whether a relationship exists between sample recovery and grade and whether sample bias may have occurred due to preferential loss/gain of fine/coarse material.</i></li> </ul>	<p>Drilling techniques to ensure adequate RC sample recovery and quality included the use of "booster" air pressure. Air pressure used for RC drilling was 700-800psi.</p> <p>All DD drilling undertaken utilised HQ core with sampling undertaken via half core cutting and 2m sample intervals, aligned with historical DD sampling and drilling techniques.</p> <p>Logging of all samples followed established company procedures which included recording of qualitative fields to allow discernment of sample reliability. This included (but was not limited to) recording: sample condition, sample recovery, sample method.</p> <p>The initial drilling programme is now complete and a final assessment of sample recovery and condition is planned to be undertaken. The majority of drilling has had no material recovery issues.</p> <p>No quantitative analysis of samples weights, sample condition or recovery has been undertaken.</p> <p>Twinned drilling analysis has been undertaken at the project to compare RC versus historical HQ diamond drilling. No significant variance has been identified.</p> <p>Historical diamond drilling recovery has not been quantitatively assessed. A preliminary inspection of core photography was undertaken, and no material issues were noted.</p> <p>Methods taken to maximise historical sample recovery, quality, condition are not known.</p> <p>No analysis of historical samples weights, sample condition or recovery has been undertaken.</p>

Criteria	JORC Code explanation	Commentary
Logging	<ul style="list-style-type: none"> <li><i>Whether core and chip samples have been geologically and geotechnically logged to a level of detail to support appropriate Mineral Resource estimation, mining studies and metallurgical studies.</i></li> <li><i>Whether logging is qualitative or quantitative in nature. Core (or costean, channel, etc) photography.</i></li> <li><i>The total length and percentage of the relevant intersections logged.</i></li> </ul>	<p>Geological logging of samples followed established company and industry common procedures. Qualitative logging of samples included (but was not limited to) lithology, mineralogy, alteration and weathering.</p> <p>Every metre (100%) of HCH drilling was geologically logged.</p> <p>The total length of the relevant mineralised interval(s) is provided in the main body of the report.</p> <p>Geological logs have been provided as part of third-party historical data, these have been reviewed and are deemed to be of an appropriate standard. All geological logs are fully available and Hot Chili has also completed verification and re-logging programme of historical diamond drill core where required</p>
Sub-sampling techniques and sample preparation	<ul style="list-style-type: none"> <li><i>If core, whether cut or sawn and whether quarter, half or all core taken.</i></li> <li><i>If non-core, whether riffled, tube sampled, rotary split, etc and whether sampled wet or dry.</i></li> <li><i>For all sample types, the nature, quality and appropriateness of the sample preparation technique.</i></li> <li><i>Quality control procedures adopted for all sub-sampling stages to maximise representivity of samples.</i></li> <li><i>Measures taken to ensure that the sampling is representative of the in situ material collected, including for instance results for field duplicate/second-half sampling.</i></li> <li><i>Whether sample sizes are appropriate to the grain size of the material being sampled.</i></li> </ul>	<p>Splitting of RC samples occurred via cone splitter by the RC drill rig operators. Cone splitting of RC drill samples occurred regardless of the sample condition.</p> <p>RC drilling sample weights range from 0.3kg to 7.0kg, but typically between 2-4kg, and generally averaging around 3.2kg.</p> <p>Half core 2m sample intervals have been utilised for Hot Chili's HQ diamond core, in-line with previous historical diamond core sampling</p> <p>All samples were submitted to ALS Coquimbo (Chile) for multi-element analysis. The sample preparation included:</p> <p>Samples were then split via rotatory splitter to achieve ~1kg split,</p> <ul style="list-style-type: none"> <li>– This split was then pulverised such that a minimum of 85% passes 75um and 150g was used for analytical pulp (ICP-AES), also 30g was used for fire assay fusion (gold).</li> <li>– 150g pulps derived from sample preparation (outlines in the previous sections) were used for multi-element analysis. ALS method ME-ICP61 involves a 4-acid digestion (Hydrochloric-Nitric-Perchloric-Hydrofluoric) followed by ICP-AES determination.</li> <li>– Samples that returned Cu grades &gt;10,000ppm were analysed by ALS "ore grade" method Cu-OG62, which is a 4-acid digestion, followed by AES measurement to 0.001%Cu</li> <li>– Samples determined to be either oxide or transitional in weathering were also analysed using a copper soluble method Cu-AA05</li> </ul>



Criteria	JORC Code explanation	Commentary
		<ul style="list-style-type: none"> <li>– Pulp samples were subsequently analysed for gold by ALS method Au-ICP21; a 30g lead-collection Fire Assay, followed by ICP-OES to a detection limit of 0.001ppm Au.</li> </ul> <p>Sample collection, size and analytical methods are deemed appropriate for the style of exploration.</p> <p>Historical Half diamond core was sampled. All samples were submitted to either ACTLABS (Chile), ACME Labs (now Bureau Veritas, Chile), ALS Global (Chile) or Andes Analytical Assay (Chile).</p> <p>Hot Chili Limited has verified the historical sampling methods, analytical techniques, and assay values. The Company has undertaken a high-level initial review of the SCM Carola QA/QC data.</p> <p>The lab specific methods used at the time of historical drilling are yet to be confirmed, and will be verified as part of the Company's due diligence.</p> <p>Sample length collection methods of historical diamond sampling are considered acceptable for the exploration of these styles of mineralisation.</p>
Quality of assay data and laboratory tests	<ul style="list-style-type: none"> <li>• <i>The nature, quality and appropriateness of the assaying and laboratory procedures used and whether the technique is considered partial or total.</i></li> <li>• <i>For geophysical tools, spectrometers, handheld XRF instruments, etc, the parameters used in determining the analysis including instrument make and model, reading times, calibrations factors applied and their derivation, etc.</i></li> <li>• <i>Nature of quality control procedures adopted (eg standards, blanks, duplicates, external laboratory checks) and whether acceptable levels of accuracy (ie lack of bias) and precision have been established.</i></li> </ul>	<p>All Hot Chili samples were assayed by industry standard methods through commercial laboratories in Chile (ALS Coquimbo). Typical analysis methods are detailed in the previous section and are consider 'near total' values.</p> <p>Hot Chili undertakes several steps to ensure quality of sampling. These include, but are not limited to, the use of duplicates, certified reference material and blank media:</p> <ul style="list-style-type: none"> <li>– Routine 'standard' (mineralised pulp) Certified Reference Material (CRM) was inserted at a nominal rate of 1 in 50 samples.</li> <li>– Routine 'blank' material (mineralised quartz) was inserted at a nominal rate of 1 in 100 samples at the logging geologist's discretion.</li> <li>– Routine field duplicates for RC samples were submitted at a rate of 1 in 50 samples.</li> <li>– The drilling programme is still underway, and while the full analysis of quality parameters has yet to be undertaken, no significant issues have been noted.</li> </ul> <p>No umpire checks were undertaken by Hot Chili during this period. The analytical laboratories provided their own routine quality controls within their own practices. No significant issues have been noted.</p> <p>All historical Cortadera samples were assayed by industry standard methods through commercial laboratories in Chile (ACTLABS, ALS Global, or Andes Analytical Assay).</p>

Criteria	JORC Code explanation	Commentary
		<p>Typical analysis methods used for historical samples included;</p> <ul style="list-style-type: none"> <li>For copper and multi-element; either 4-acid or 3-acid digest followed by either an ICP-MS, ICP-AAS, or a HF digest with ICP-AES. E.g. ACTLAB method 3ACID-AAS, ALS method Cu-AA61, Andes Analytical Assay method (4A-AAS1E01 or ICP_AES_HH22).</li> <li>Gold grades were analysed for Fire Analysis (30g charge). E.g. ACTLABS method FA-AAS, ALS method Au-AA23, Andes Analytical Assay method AEF_AAS1EE9.</li> </ul> <p>No formal assessment of SCM Carola standards, duplicates or umpire testing has been undertaken. Although a high level assessment of all assays which includes approximately 10% QAQC samples has been undertaken.</p> <p>No assessment of laboratories standards and practices has been undertaken for historical drilling.</p>
Verification of sampling and assaying	<ul style="list-style-type: none"> <li><i>The verification of significant intersections by either independent or alternative company personnel.</i></li> <li><i>The use of twinned holes.</i></li> <li><i>Documentation of primary data, data entry procedures, data verification, data storage (physical and electronic) protocols.</i></li> <li><i>Discuss any adjustment to assay data.</i></li> </ul>	<p>The SCM Carola documents indicate that there has been some previous umpire sample test work. Hot Chili has not quantitatively reviewed this data.</p> <p>Hot Chili has commenced a programme of quarter core sampling across selected intervals of historical half diamond core</p> <p>Twinned drilling at the Cortadera project has commenced to compare RC to previous HQ diamond drilling. One twin drill hole is expected to be completed at each of the three porphyry bodies defined (Purisima, Cuerpo 2 and Cuerpo 3)</p> <p>All retained core and pulp samples are stored in a secured site and are available for verification if required.</p>
Location of data points	<ul style="list-style-type: none"> <li><i>Accuracy and quality of surveys used to locate drill holes (collar and down-hole surveys), trenches, mine workings and other locations used in Mineral Resource estimation.</i></li> <li><i>Specification of the grid system used.</i></li> <li><i>Quality and adequacy of topographic control.</i></li> </ul>	<p>RC drill collars were set out using a hand held GPS and final collars were collected using a handheld GPS. The WGS84 UTM zone 19S coordinate system was used for all undertakings.</p> <p>Downhole surveys for RC drilling by Hot Chili were completed by the drilling contractor using a north-seeking gyroscope. Holes without downhole survey use planned or compass bearing/dip measurements for survey control.</p> <p>Drill collar survey methods undertaken by SCM Carola are yet to be verified, however all collars were located by Hot Chili and have been surveyed using a DGPS.</p> <p>Downhole surveys were completed on some of the Cortadera drilling. Holes without downhole survey use planned or compass bearing/dip measurements for survey control.</p>



Criteria	JORC Code explanation	Commentary
<i>Data spacing and distribution</i>	<ul style="list-style-type: none"> <li><i>Data spacing for reporting of Exploration Results.</i></li> <li><i>Whether the data spacing and distribution is sufficient to establish the degree of geological and grade continuity appropriate for the Mineral Resource and Ore Reserve estimation procedure(s) and classifications applied.</i></li> <li><i>Whether sample compositing has been applied.</i></li> </ul>	<p>The PSAD56 zone 19S coordinate system was used for all Cortadera undertakings</p> <p>The spacing and location of the majority of the historical diamond drilling at the Cortadera project is variable and ranges from approximately 80m to 300m. Sampling has been undertaken at 2m intervals.</p> <p>The spacing and location of data is currently only being considered for exploration purposes with additional RC and diamond drilling being undertaken by Hot Chili to establish a Mineral Resource.</p>
<i>Orientation of data in relation to geological structure</i>	<ul style="list-style-type: none"> <li><i>Whether the orientation of sampling achieves unbiased sampling of possible structures and the extent to which this is known, considering the deposit type.</i></li> <li><i>If the relationship between the drilling orientation and the orientation of key mineralised structures is considered to have introduced a sampling bias, this should be assessed and reported if material.</i></li> </ul>	<p>Historical drilling completed and current drilling being completed at Cortadera is nominally perpendicular to mineralisation where practical and where known. The relationship of mineralisation widths to the intercepts of drilling undertaken by other previous companies is unknown and yet to be assessed, however copper-gold porphyry mineralisation is typically fairly homogenous meaning a limited chance of bias likely to be caused from drilling orientation.</p> <p>A list of the drill holes and orientations is stated in section 2 of this table for all historical diamond drilling and a list of drill holes reported in this announcement is contained within the body of this announcement.</p> <p>Considering the types of mineralisation at the Cortadera projects, the drilling orientations and subsequent sampling is considered to be unbiased in its representation for exploration reporting purposes.</p>
<i>Sample security</i>	<ul style="list-style-type: none"> <li><i>The measures taken to ensure sample security.</i></li> </ul>	<p>Hot Chili has strict chain of custody procedures that are adhered. All samples have the sample submission number/ticket inserted into each bulk polyweave sample bag with the id number clearly visible. The sample bag is stapled together such that no sample material can spill out and no one can tamper with the sample once it leaves Hot Chili's custody.</p> <p>The measures taken to ensure sample security during historical drilling are unknown. All retained core and pulp samples are currently stored in a secured site and are available for verification if required.</p>
<i>Audits or reviews</i>	<ul style="list-style-type: none"> <li><i>The results of any audits or reviews of sampling techniques and data.</i></li> </ul>	None completed.

## Section 2 Reporting of Exploration Results

(Criteria listed in the preceding section also apply to this section.)

Criteria	JORC Code explanation	Commentary																																
Mineral tenement and land tenure status	<ul style="list-style-type: none"><li>Type, reference name/number, location and ownership including agreements or material issues with third parties such as joint ventures, partnerships, overriding royalties, native title interests, historical sites, wilderness or national park and environmental settings.</li><li>The security of the tenure held at the time of reporting along with any known impediments to obtaining a licence to operate in the area.</li></ul>	<p>Cortadera Project tenements and details:</p> <table><tr><td>Magdalenita 1/20</td><td>Corroteo 5 1/261</td><td>Las Cañas 1/15</td></tr><tr><td>Atacamita 1/82</td><td>Paulina 27 A 1/30</td><td>Cortadera 1/40</td></tr><tr><td>Paulina 11B 1/30</td><td>Paulina 15 B 1/30</td><td>Paulina 24 A 1/24</td></tr><tr><td>Paulina 10B 1/20</td><td>Paulina 22 A 1/30</td><td>Paulina 25 A 1/20</td></tr><tr><td>Amalia 942 A 1/10</td><td>Cortadera 1 1/200</td><td>Las Cañas Este 2003 1/30</td></tr><tr><td>Paulina 12B 1/30</td><td>Cortadera 2 1/200</td><td>Paulina 26 A 1/30</td></tr><tr><td>Paulina 13B 1/30</td><td>Cortadera 41</td><td>Cortadera 42</td></tr><tr><td>Paulina 14B 1/30</td><td>Corroteo 1 1/280</td><td>Lo Cañas 16</td></tr></table>	Magdalenita 1/20	Corroteo 5 1/261	Las Cañas 1/15	Atacamita 1/82	Paulina 27 A 1/30	Cortadera 1/40	Paulina 11B 1/30	Paulina 15 B 1/30	Paulina 24 A 1/24	Paulina 10B 1/20	Paulina 22 A 1/30	Paulina 25 A 1/20	Amalia 942 A 1/10	Cortadera 1 1/200	Las Cañas Este 2003 1/30	Paulina 12B 1/30	Cortadera 2 1/200	Paulina 26 A 1/30	Paulina 13B 1/30	Cortadera 41	Cortadera 42	Paulina 14B 1/30	Corroteo 1 1/280	Lo Cañas 16								
Magdalenita 1/20	Corroteo 5 1/261	Las Cañas 1/15																																
Atacamita 1/82	Paulina 27 A 1/30	Cortadera 1/40																																
Paulina 11B 1/30	Paulina 15 B 1/30	Paulina 24 A 1/24																																
Paulina 10B 1/20	Paulina 22 A 1/30	Paulina 25 A 1/20																																
Amalia 942 A 1/10	Cortadera 1 1/200	Las Cañas Este 2003 1/30																																
Paulina 12B 1/30	Cortadera 2 1/200	Paulina 26 A 1/30																																
Paulina 13B 1/30	Cortadera 41	Cortadera 42																																
Paulina 14B 1/30	Corroteo 1 1/280	Lo Cañas 16																																
Exploration done by other parties	<ul style="list-style-type: none"><li>Acknowledgment and appraisal of exploration by other parties.</li></ul>	<p>Previous exploration at the project included:</p> <ul style="list-style-type: none"><li>Historical surface workings</li><li>1990's. Mount Isa Mining Company Chile undertook mapping, trench sampling, some geophysical surveying and limited drilling.</li><li>2001. SCM Carola undertook field surveys including sampling.</li></ul> <p>2011-2012. Minera Fuego undertook surface mapping, drilling and surface sampling</p>																																
Geology	<ul style="list-style-type: none"><li>Deposit type, geological setting and style of mineralisation.</li></ul>	<p>The Cu-Au-Mo mineralisation at Cortadera is associated with multiple porphyry intrusions. These porphyries have intruded into the early to mid Cretaceuos Totorralillo and Nantoco Formations (variously stratified chemical sediments, volcanoclastics, bioclastics, volcanic breccias, and andesitic volcanic units) along an apparent NW structure. These porphyries appear to exhibit typical Cu-Au porphyry veining networks and associated alteration styles. As typical in porphyry deposits, Cu and Au are strongly related, and higher-grade Cu and Mo are associated with high vein density.</p> <p>Local oxide mineralisation encountered in drilling and observed at surface suggests supergene mineralisation</p>																																
Drill hole Information	<ul style="list-style-type: none"><li>A summary of all information material to the understanding of the exploration results including a tabulation of the following information for all Material drill holes:<ul style="list-style-type: none"><li>easting and northing of the drill hole collar</li><li>elevation or RL (Reduced Level – elevation above sea level in metres) of the drill hole collar</li><li>dip and azimuth of the hole</li></ul></li></ul>	<p>The coordinates and orientations for all of the historical Cortadera drill holes are provided below:</p> <table><tr><th>hole_id</th><th>easting</th><th>northing</th><th>RL</th><th>Datum</th><th>azimuth</th><th>dip</th><th>hole_depth</th></tr><tr><td>FJOD-01</td><td>335750.0</td><td>6814312.0</td><td>977.2</td><td>PSAD56</td><td>180</td><td>-60</td><td>300.7</td></tr><tr><td>FJOD-02</td><td>335743.3</td><td>6814316.0</td><td>976.9</td><td>PSAD56</td><td>225</td><td>-69</td><td>542.6</td></tr><tr><td>FJOD-03</td><td>335598.1</td><td>6814752.7</td><td>1015.5</td><td>PSAD56</td><td>315</td><td>-70</td><td>323.1</td></tr></table>	hole_id	easting	northing	RL	Datum	azimuth	dip	hole_depth	FJOD-01	335750.0	6814312.0	977.2	PSAD56	180	-60	300.7	FJOD-02	335743.3	6814316.0	976.9	PSAD56	225	-69	542.6	FJOD-03	335598.1	6814752.7	1015.5	PSAD56	315	-70	323.1
hole_id	easting	northing	RL	Datum	azimuth	dip	hole_depth																											
FJOD-01	335750.0	6814312.0	977.2	PSAD56	180	-60	300.7																											
FJOD-02	335743.3	6814316.0	976.9	PSAD56	225	-69	542.6																											
FJOD-03	335598.1	6814752.7	1015.5	PSAD56	315	-70	323.1																											

Criteria	JORC Code explanation	Commentary							
<ul style="list-style-type: none"><li>○ down hole length and interception depth</li><li>○ hole length.</li><li>● If the exclusion of this information is justified on the basis that the information is not Material and this exclusion does not detract from the understanding of the report, the Competent Person should clearly explain why this is the case.</li></ul>		FJOD-04	337169.0	6814370.0	1212.0	PSAD56	350	-60	278.0
		FJOD-05	334476.8	6814324.5	916.9	PSAD56	350	-75	511.5
		FJOD-06	335629.0	6814182.1	994.5	PSAD56	46	-49	587.9
		FJOD-07	335873.7	6814350.8	985.4	PSAD56	225	-48	514.8
		FJOD-08	335735.0	6814413.7	980.2	PSAD56	224	-70	589.9
		FJOD-09	336539.9	6813972.9	1034.5	PSAD56	271	-49	630.7
		FJOD-10	335296.7	6814717.2	961.1	PSAD56	227	-60	536.2
		FJOD-11	335201.2	6814625.9	959.5	PSAD56	227	-50	451.9
		FJOD-12	335663.7	6814454.5	983.4	PSAD56	227	-55	248.0
		FJOD-13	336111.3	6814383.4	1007.4	PSAD56	227	-60	623.4
		FJOD-14	335667.2	6814457.7	983.5	PSAD56	227	-55	600.0
		FJOD-15	336274.7	6814265.6	1029.6	PSAD56	227	-60	712.9
		FJOD-16	336440.3	6814154.7	1043.3	PSAD56	227	-65	710.4
		FJOD-17	336488.7	6813913.6	1034.9	PSAD56	227	-65	599.3
		FJOD-18	336644.4	6813840.6	1045.3	PSAD56	227	-60	629.4
		FJOD-19	335591.6	6814752.6	1015.2	PSAD56	54	-78	1123.4
		FJOD-20	335553.2	6814353.5	966.2	PSAD56	102	-60	697.9
		FJOD-21	335114.7	6814659.9	961.0	PSAD56	109	-74	350.3
		FJOD-22	336190.0	6814175.5	1006.0	PSAD56	30	-60	631.3
		FJOD-23	336191.4	6813924.8	1027.3	PSAD56	48	-65	1007.0
		FJOD-24	335027.2	6814621.1	970.4	PSAD56	110	-75	250.8
		FJOD-25	334956.0	6814633.1	970.6	PSAD56	110	-75	281.4
		FJOD-26	335001.4	6814553.8	953.4	PSAD56	110	-70	98.7
		FJOD-27	334996.7	6814552.3	953.4	PSAD56	290	-75	191.6
		FJOD-28	335260.9	6814125.9	974.6	PSAD56	305	-70	545.7
		FJOD-29	336493.4	6813914.7	1035.0	PSAD56	45	-75	715.2
		FJOD-30	336192.2	6814169.4	1006.2	PSAD56	45	-80	713.4
		FJOD-31	336805.8	6813742.7	1059.9	PSAD56	227	-60	728.1
		FJOD-32	336198.0	6813922.3	1027.4	PSAD56	90	-65	1085.6



Criteria	JORC Code explanation	Commentary																																																								
		<table><tr><td>FJOD-33</td><td>335631.8</td><td>6814180.8</td><td>994.4</td><td>PSAD56</td><td>45</td><td>-68</td><td>947.2</td></tr><tr><td>FJOD-34</td><td>335201.1</td><td>6814623.6</td><td>959.6</td><td>PSAD56</td><td>45</td><td>-70</td><td>647.3</td></tr><tr><td>FJOD-35</td><td>335915.0</td><td>6814060.0</td><td>1024.0</td><td>PSAD56</td><td>45</td><td>-70</td><td>845.2</td></tr><tr><td>FJOD-36</td><td>336303.0</td><td>6813740.0</td><td>1058.0</td><td>PSAD56</td><td>90</td><td>-70</td><td>1025.5</td></tr><tr><td>FJOD-37</td><td>335372.0</td><td>6814431.0</td><td>951.0</td><td>PSAD56</td><td>45</td><td>-70</td><td>1000.0</td></tr><tr><td>FJOD-38</td><td>335125.0</td><td>6814675.0</td><td>956.0</td><td>PSAD56</td><td>270</td><td>-60</td><td>446.5</td></tr><tr><td>FJOD-39</td><td>336942.0</td><td>6813225.0</td><td>1150.0</td><td>PSAD56</td><td>0</td><td>-90</td><td>743.5</td></tr></table> <p>All drill holes completed by Hot Chili have been reported in this announcement and previous announcements to the ASX made on 5<sup>th</sup> June 2019 and 9<sup>th</sup> May 2019.</p> <p>Any quoted results in the main report body, from historic or previous company drilling or sampling programmes, has been provided for historic and qualitative purposes only.</p> <p>All historic or previous company drilling results not included may be due to; a) uncertainty of result, location or other unreliability, b) yet to be assessed by Hot Chili, c) unmineralised, d) unsampled or unrecorded, or e) not considered material.</p>	FJOD-33	335631.8	6814180.8	994.4	PSAD56	45	-68	947.2	FJOD-34	335201.1	6814623.6	959.6	PSAD56	45	-70	647.3	FJOD-35	335915.0	6814060.0	1024.0	PSAD56	45	-70	845.2	FJOD-36	336303.0	6813740.0	1058.0	PSAD56	90	-70	1025.5	FJOD-37	335372.0	6814431.0	951.0	PSAD56	45	-70	1000.0	FJOD-38	335125.0	6814675.0	956.0	PSAD56	270	-60	446.5	FJOD-39	336942.0	6813225.0	1150.0	PSAD56	0	-90	743.5
FJOD-33	335631.8	6814180.8	994.4	PSAD56	45	-68	947.2																																																			
FJOD-34	335201.1	6814623.6	959.6	PSAD56	45	-70	647.3																																																			
FJOD-35	335915.0	6814060.0	1024.0	PSAD56	45	-70	845.2																																																			
FJOD-36	336303.0	6813740.0	1058.0	PSAD56	90	-70	1025.5																																																			
FJOD-37	335372.0	6814431.0	951.0	PSAD56	45	-70	1000.0																																																			
FJOD-38	335125.0	6814675.0	956.0	PSAD56	270	-60	446.5																																																			
FJOD-39	336942.0	6813225.0	1150.0	PSAD56	0	-90	743.5																																																			
Data aggregation methods	<ul style="list-style-type: none"><li><i>In reporting Exploration Results, weighting averaging techniques, maximum and/or minimum grade truncations (eg cutting of high grades) and cut-off grades are usually Material and should be stated.</i></li><li><i>Where aggregate intercepts incorporate short lengths of high grade results and longer lengths of low grade results, the procedure used for such aggregation should be stated and some typical examples of such aggregations should be shown in detail.</i></li><li><i>The assumptions used for any reporting of metal equivalent values should be clearly stated.</i></li></ul>	<p>In reported exploration results, length weighted averages are used for any non-uniform intersection sample lengths. Length weighted average is (sum product of interval x corresponding interval assay grade), divided by sum of interval lengths and rounded to one decimal place.</p> <p>No top cuts have been considered in reporting of grade results, nor was it deemed necessary for the reporting of significant intersections.</p> <p>No metal equivalent values have been reported.</p>																																																								
Relationship between mineralisation widths and	<ul style="list-style-type: none"><li><i>These relationships are particularly important in the reporting of Exploration Results.</i></li><li><i>If the geometry of the mineralisation with respect to the drill hole angle is known, its nature should be reported.</i></li></ul>	<p>Drilling at the Cortadera project was nominally perpendicular to mineralisation, where known and practical.</p> <p>The relationship of mineralisation widths to the intercepts of drilling undertaken by other previous companies is unknown and is currently being assessed.</p>																																																								

Criteria	JORC Code explanation	Commentary
<i>intercept lengths</i>	<ul style="list-style-type: none"> <li>If it is not known and only the down hole lengths are reported, there should be a clear statement to this effect (eg 'down hole length, true width not known').</li> </ul>	
<i>Diagrams</i>	<ul style="list-style-type: none"> <li>Appropriate maps and sections (with scales) and tabulations of intercepts should be included for any significant discovery being reported. These should include, but not be limited to a plan view of drill hole collar locations and appropriate sectional views.</li> </ul>	Refer to figures in announcement. A plan view of reported significant intersection drill holes are included.
<i>Balanced reporting</i>	<ul style="list-style-type: none"> <li>Where comprehensive reporting of all Exploration Results is not practicable, representative reporting of both low and high grades and/or widths should be practiced to avoid misleading reporting of Exploration Results.</li> </ul>	<p>It is not practical to report all exploration results as such unmineralised intervals. Low or non-material grades have not been reported, however a full list of drill hole coordinate and orientation details is stated above.</p> <p>All drill hole locations are reported and a table of significant intervals is provided in the announcement.</p>
<i>Other substantive exploration data</i>	<ul style="list-style-type: none"> <li>Other exploration data, if meaningful and material, should be reported including (but not limited to): geological observations; geophysical survey results; geochemical survey results; bulk samples – size and method of treatment; metallurgical test results; bulk density, groundwater, geotechnical and rock characteristics; potential deleterious or contaminating substances.</li> </ul>	Available data from historic or previous exploration parties includes some surface mapping, surface geochemical surveys and geophysical surveys (Ground magnetics, airborne magnetics and Induced Polarisation surveys). Where possible, historic exploration data has been supported by selected sampling and geological mapping undertaken by Hot Chili.
<i>Further work</i>	<ul style="list-style-type: none"> <li>The nature and scale of planned further work (eg tests for lateral extensions or depth extensions or large-scale step-out drilling).</li> <li>Diagrams clearly highlighting the areas of possible extensions, including the main geological interpretations and future drilling areas, provided this information is not commercially sensitive.</li> </ul>	Potential work across the Cortadera project may include further verification drilling, sampling, assaying and QA/QC. Other further work may also include mapping, surface sampling, ground or airborne geophysics as well as in-fill or exploratory drilling.