



# BREAKER

## Resources NL

11 February 2020

The Manager  
Market Announcements Office  
ASX Limited  
PO Box H224 Australia Square  
SYDNEY NSW 2001

Dear Sir/Madam

### **GOLD INVESTOR EVENT PRESENTATION**

Please find attached a presentation to be given by Executive Chairman Tom Sanders at the Gold Investor Event in Perth today.

Yours faithfully

**MICHELLE SIMSON**  
**Company Secretary**

**For further information on Breaker Resources NL please visit the Company's website at [www.breakerresources.com.au](http://www.breakerresources.com.au), or contact:**

Investors/Shareholders

Tom Sanders  
Tel: +61 8 9226 3666  
Email: [breaker@breakerresources.com.au](mailto:breaker@breakerresources.com.au)

Media

Paul Armstrong/Nicholas Read  
Read Corporate  
Tel: +61 8 9388 1474

12 Walker Avenue  
WEST PERTH WA 6005  
PO Box 244  
WEST PERTH WA 6872



ASX: BRB; ACN: 145 011 178

Telephone: (08) 9226 3666  
Facsimile: (08) 9226 3668  
Email: [breaker@breakerresources.com.au](mailto:breaker@breakerresources.com.au)  
Web: [www.breakerresources.com.au](http://www.breakerresources.com.au)

# Building value at a major 1Moz# greenfields gold discovery near Kalgoorlie, Western Australia



This presentation is for information purposes only. Neither this presentation nor the information contained in it constitutes an offer, invitation, solicitation or recommendation in relation to the purchase or sale of shares in any jurisdiction. This presentation may not be distributed in any jurisdiction except in accordance with the legal requirements applicable in such jurisdiction. Recipients should inform themselves of the restrictions that apply in their own jurisdiction. A failure to do so may result in a violation of securities laws in such jurisdiction. This presentation does not constitute financial product advice and has been prepared without taking into account the recipient's investment objectives, financial circumstances or particular needs and the opinions and recommendations in this presentation are not intended to represent recommendations of particular investments to particular persons. Recipients should seek professional advice when deciding if an investment is appropriate. All securities transactions involve risks, which include (among others) the risk of adverse or unanticipated market, financial or political developments. To the maximum extent permitted by law, Breaker Resources NL (Breaker) does not warrant the accuracy, currency or completeness of the information in this presentation, nor the future performance of the Company, and will not be responsible for any loss or damage arising from the use of the information.

Certain statements contained in this presentation, including information as to the future financial or operating performance of Breaker and its projects, are forward-looking statements. Such forward-looking statements: are necessarily based upon a number of estimates and assumptions that, whilst considered reasonable by Breaker, are inherently subject to significant technical, business, economic, competitive, political and social uncertainties and contingencies; involve known and unknown risks and uncertainties that could cause actual events or results to differ materially from estimated or anticipated events or results reflected in such forward-looking statements; and may include, among other things, statements regarding targets, estimates and assumptions in respect of metal production and prices, operating costs and results, capital expenditures, ore reserves and mineral resources and anticipated grades and recovery rates, and are or may be based on assumptions and estimates related to future technical, economic, market, political, social and other conditions. Breaker disclaims any intent or obligation to update publicly any forward-looking statements, whether as a result of new information, future events or results or otherwise. The words "believe", "expect", "anticipate", "indicate", "contemplate", "target", "plan", "intends", "continue", "budget", "estimate", "may", "will", "schedule" and other similar expressions identify forward-looking statements. All forward-looking statements made in this presentation are qualified by the foregoing cautionary statements. Investors are cautioned that forward-looking statements are not guarantees of future performance and accordingly investors are cautioned not to put undue reliance on forward-looking statements due to the inherent uncertainty therein.

#### Competent Persons Statement

The information in this report that relates to Exploration Targets and Exploration Results is based on information compiled by Tom Sanders who is a Member of The Australasian Institute of Mining and Metallurgy. Mr Sanders is an officer of Breaker Resources NL and his services have been engaged by Breaker on an 80% of full time basis; he is also a shareholder in the Company. Mr Sanders has sufficient experience that is relevant to the style of mineralisation and type of deposit under consideration and to the activity being undertaken to qualify as a Competent Person as defined in the 2012 Edition of the 'Australasian Code for Reporting of Exploration Results, Mineral Resources and Ore Reserves'. Mr Sanders consents to the inclusion in the report of the matters based on his information in the form and context in which it appears.

#The information in this report that relates to the Mineral Resources and Exploration Targets is based on information announced to the ASX on 2 September 2019. Breaker confirms that it is not aware of any new information or data that materially affects the information included in the relevant market announcements, and that all material assumptions and technical parameters underpinning the estimates in the relevant market announcement continue to apply.

**Table: Lake Roe Project Bombora Deposit Mineral Resource September 2019**

*Notes:*

- Reported at 0.5g/t Au cut-off
- All figures rounded to reflect the appropriate level of confidence (apparent differences may occur due to rounding)

Classification	Tonnes	Au (g/t)	Ounces
Indicated	18,356,000	1.4	803,000
Inferred	4,853,000	1.1	178,000
Total	23,210,000	1.3	981,000



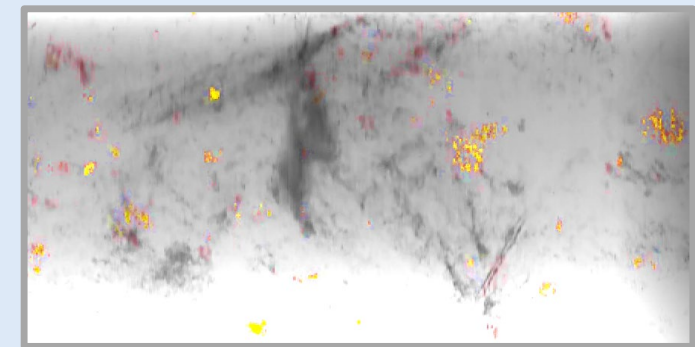
## High-grade, 8.5km-long system with camp-scale growth potential

- ✦ **Greenfields gold discovery concealed by 5m of transported cover (100%-owned)**
  - A\$18/oz discovery cost\* (it pays to drill)
  - Open in all directions after 231,000m of RC and diamond drilling
  - Using detailed understanding for cost-effective growth/discovery
  - Strategy of systematic resource growth/monetise when the time is right
- ✦ **Shallow 1.0Moz Resource# (80% Indicated) extends to 180m-300m below surface**
  - Open pit Resource # 1.0Moz 23.2Mt @ 1.3g/t Au (0.5g/t Au cut-off)  
includes 0.7Moz 9.4Mt @ 2.2g/t Au (1.0g/t Au cut-off)
  - Starts 5m below surface (open pit and underground mining potential)
  - Metallurgy studies point to low-cost processing (free-milling)\*\*
- ✦ **Major RC and diamond drilling expansion program underway (ongoing news flow)**
  - Three drill rigs focused on growth outside Resource
- ✦ **High-grade reconnaissance drill intersections in many areas outside Resource**
  - eg. 6.1m @ 10.54g/t Au+ 130m below Resource (outstanding depth potential)
  - eg. 11m @ 3.84g/t Au++ 2km north of Resource (outstanding shallow strike potential)
  - Using detailed understanding of geology to de-risk extensions and discovery



**Bombora gold deposit**

*100km east of Kalgoorlie  
Western Australia*



**X-ray scan of drill core with visible gold  
Daisy Lode discovered May 2019**

(BBDD0086; ASX Release 6 May 2019)



# At least one discovery each quarter over last 4 years

Open in all directions after 231,000m of RC/diamond drilling



## Aligned with shareholders, tight register, well-funded

### Senior Team

<b>Tom Sanders</b>	Executive Chairman (geologist)
<b>Mark Edwards</b>	Non-Executive Director (lawyer)
<b>Mike Kitney</b>	Non-Executive Director (process engineer)
<b>Linton Putland</b>	Non-Executive Director (mining engineer)
<b>Michelle Simson</b>	Company Secretary
<b>Alastair Barker</b>	Exploration Manager
<b>Michael Outhwaite</b>	Supervising Geologist

### Capital Structure

✦ <b>Issued Securities</b>	<b>231.3m fully paid shares)</b> (5.3m unlisted options)
✦ <b>Market capitalisation</b>	<b>~\$58.0m</b> (\$0.25/share; 10/02/2020)
✦ <b>Cash</b>	<b>\$9.5m</b> (31/12/2019; no debt)
✦ <b>Tight share register</b>	<b>50% Funds and high net worths</b>
<b>Management alignment</b>	<b>11% Directors</b>



Five Year Share Price Chart

# Experienced, multi-disciplined Board

*An exceptional team with a long track record in mining, development, exploration, finance and corporate*



**Tom Sanders**  
**Executive Chairman**

*BSc (Geology) Sydney University; MSc (Mineral Economics) Curtin University; MAusIMM; FAICD*

Tom Sanders is a geologist with over 40 years' experience in the Australian mining industry. He lived in the Kalgoorlie area for 23 years and has extensive experience in project generation, exploration, feasibility, mining, production and corporate management with a strong emphasis on gold and nickel in Western Australia.

His experience includes work on several open pit and underground gold and nickel operations, the building of a two million ounce gold resource at a previous company, and published mineralisation studies in WA's East Kimberley.



**Mike Kitney**  
**Non-Executive Director**

*Ass Met WA Institute of Technology; Post Grad Dip (Extractive Metallurgy) WA School of Mines; MSc (Mineral Economics) Curtin University; MAusIMM; FAICD*

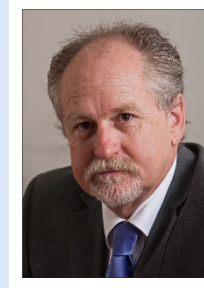
Mike Kitney is a process engineer with over 40 years' experience in the mining industry. He has participated in the development and construction of projects throughout Australia, Africa, south east Asia and the former Soviet Union. Mr Kitney's particular strengths are in production and mineral processing, all aspects of environmental management, project evaluation and assessment and leadership of interdisciplinary project teams. He brings to the Company vast project development expertise and practical experience in commissioning new projects.



**Linton Putland**  
**Non-Executive Director**

*BEng (Mining) WA School of Mines; MSc (Mineral Economics) WA School of Mines; MAusIMM; FAICD*

Linton Putland has over 30 years' experience in mining operations, joint ventures and corporate management, in Australia, Africa and the Americas over a wide range of commodities. Mr Putland is principal of LJ Putland & Associates, a private mining consultancy company which was founded in 2002, providing advisory and consultancy services in mining project and company evaluation and due diligence appraisals with a focus on corporate growth. Previously mine manager Paddington gold operations.



**Mark Edwards**  
**Non-Executive Director**

*BJuris, LLB University of Western Australia*

Mark Edwards is a solicitor with over 30 years' experience in resources and corporate law.

Mr Edwards has advised a range of ASX-listed companies active in the resources sector. He has advised on a range of resources projects in Australia and overseas, including significant nickel, gold and iron ore projects. His professional work has involved him in many facets of the resources industry ranging from ASX listings, exploration and mining joint ventures, project development agreements and project financing.



# The Lake Roe Project



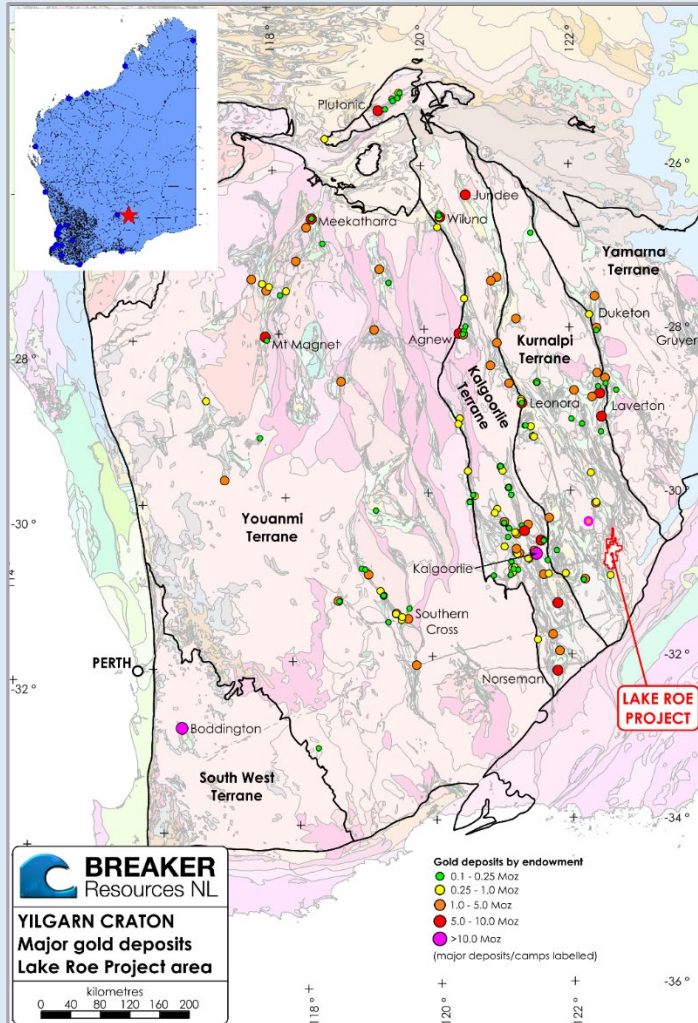
**Salt lake embayment overlies ~30% of deposit**



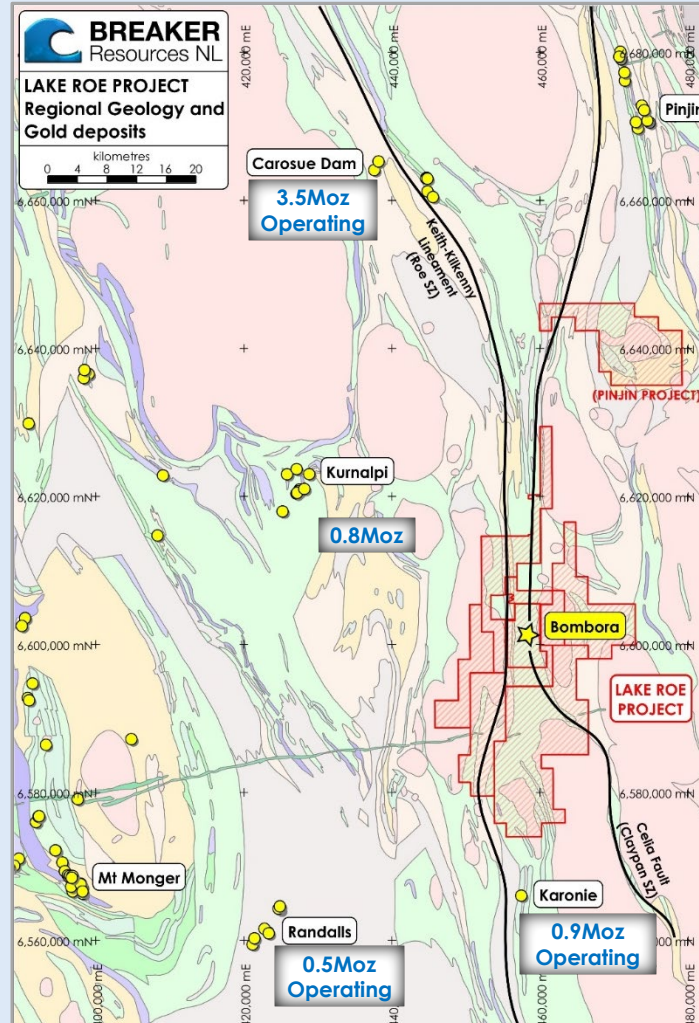
**The remainder is like this**



# Tier 1 location 100km east of Kalgoorlie, WA



Lake Roe Project Location

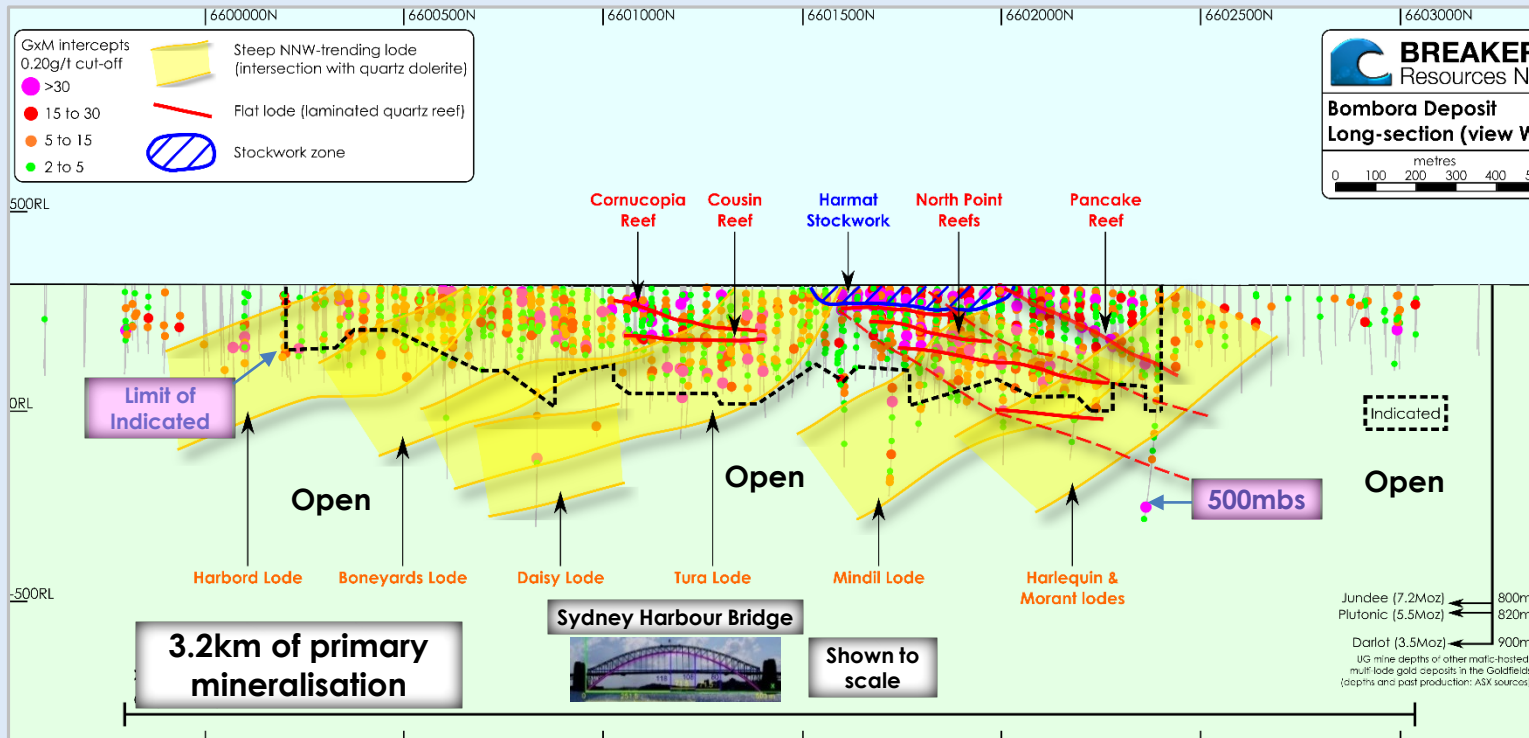


- ✦ **Large 8km new gold system discovered Feb. 2016**  
Found by regional targeting and systematic geochemistry in area of thin transported cover (typically 5-10m)
- ✦ **Between two large operating gold mines**  
(Saracen's 3.5Moz Carosue Dam Mine and Silver Lake Resources' 0.9Moz Karonie Project)
- ✦ **Large 600km<sup>2</sup> strategic land-holding** includes granted Mining Lease (+40km strike)  
Excellent access from Kalgoorlie
- ✦ **Iron-rich, fractionated dolerite**  
...the main host rock for gold in Western Australia eg. Golden Mile, Paddington, St Ives

# Not many people appreciate the scale/high-grade optionality

Some of the best drill hits in Western Australia in the last 2 years

Intercept <sup>1</sup>		Lode	HoleID	Intercept <sup>1</sup>		Lode	HoleID
25m @ 18.53g/t	from 53m	Harmat stockwork	BBRC0752	1.65m @ 156.83g/t	from 72m	North Point 1 Reef	BBDD0064
7m @ 61.78g/t	from 59m	Cornucopia Reef	BBRC0166	5.36m @ 30.37g/t	from 122m	North Point 2 Reef	BBRD0441
19m @ 17.18g/t	from 126m	Pancake Reef	BBRC0644	12.00m @ 9.80g/t	from 282m	Tura Lode	BBRD0819
3.88m @ 82.11g/t	from 132m	Mindil Lode	BBRD0675	6m @ 17.84g/t	from 155m	Boneyards Lode	BBRC0817

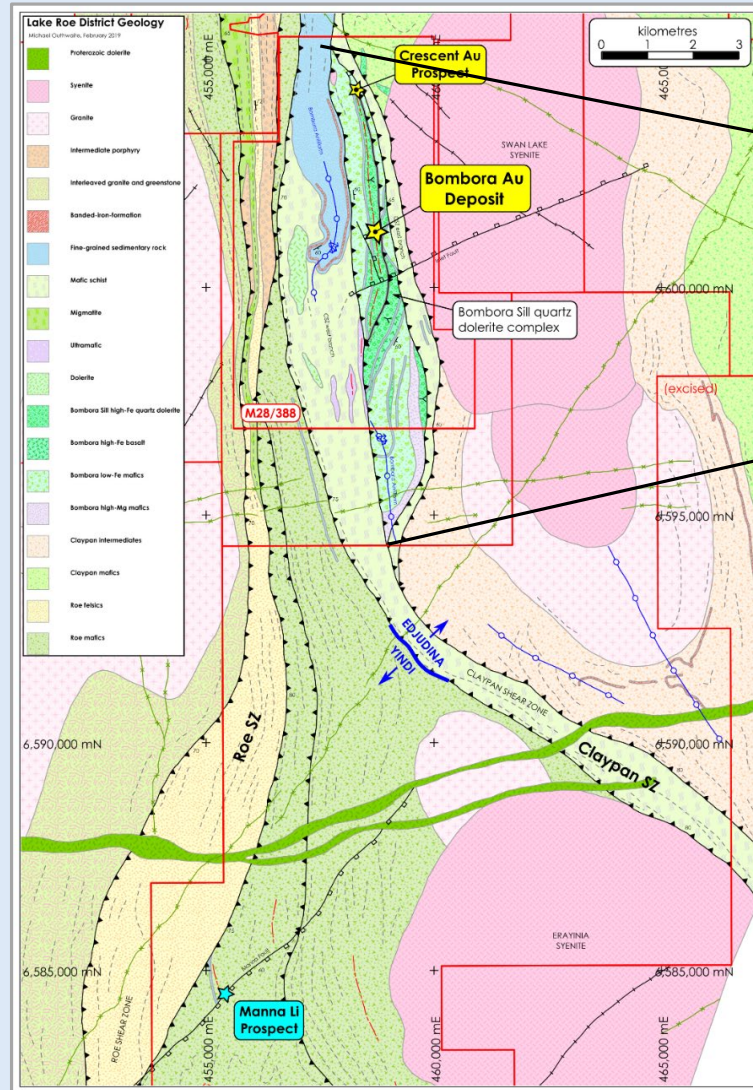


- ✦ **3.2km-long so far and growing**
- ✦ Continuity demonstrated in section, plan and 3D models
- ✦ High-grade gold starts 5m from surface  
Deepest intersection 500m below surface (limit of drilling)
- ✦ Well-known mineralisation style  
Multiple, "stacked" gold lodes in quartz dolerite  
...high oz per vertical metre

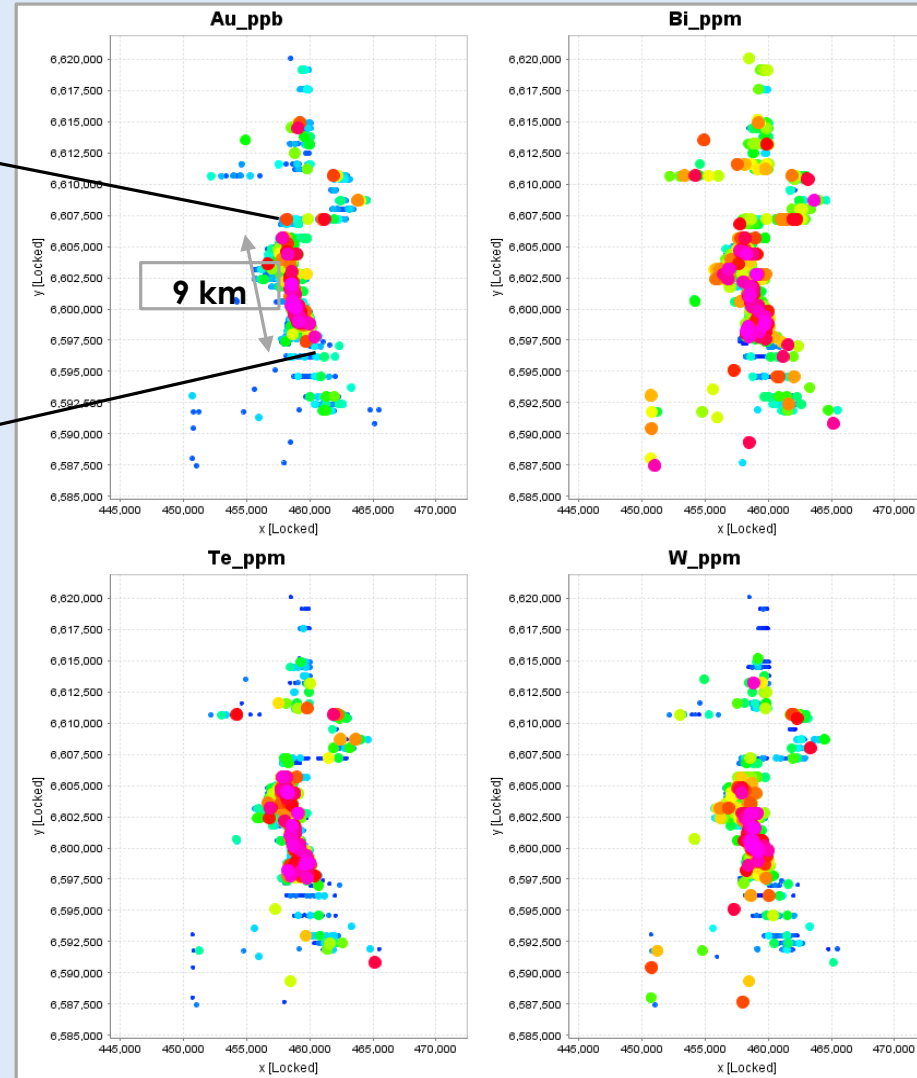
<sup>1</sup>All intercepts downhole width at >1g/t Au cut-off grade; ASX Releases 13 June 2018, 7 May 2018, 28 March 2018, 20 February 2018, 17 October 2017, 31 July 2017, 31 January 2017, 10 January 2017 & 21 March 2019



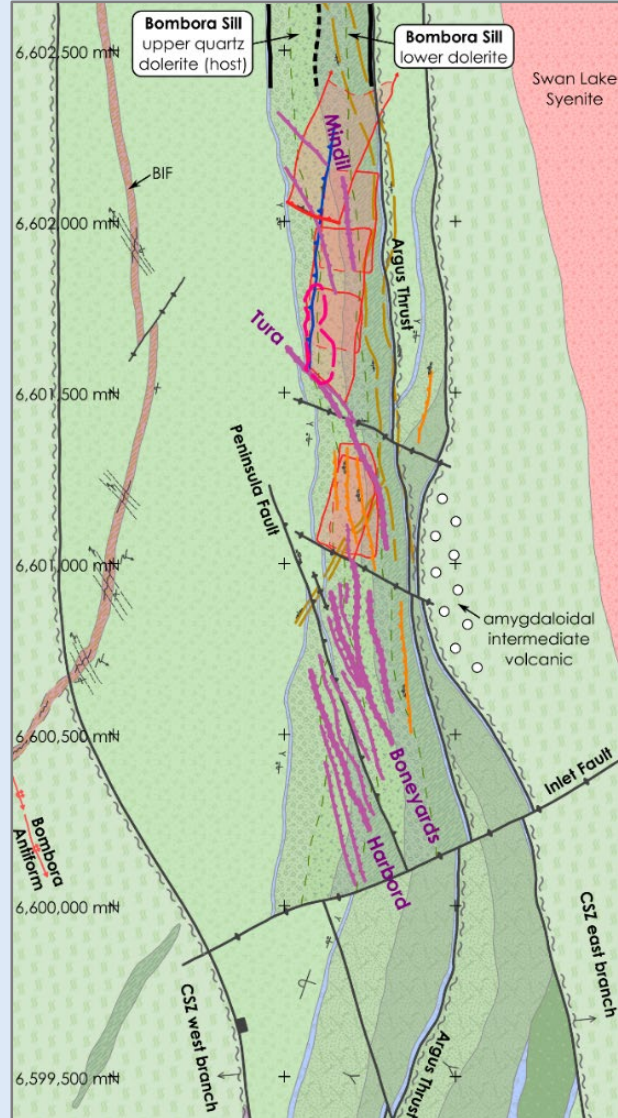
## Surface Geology



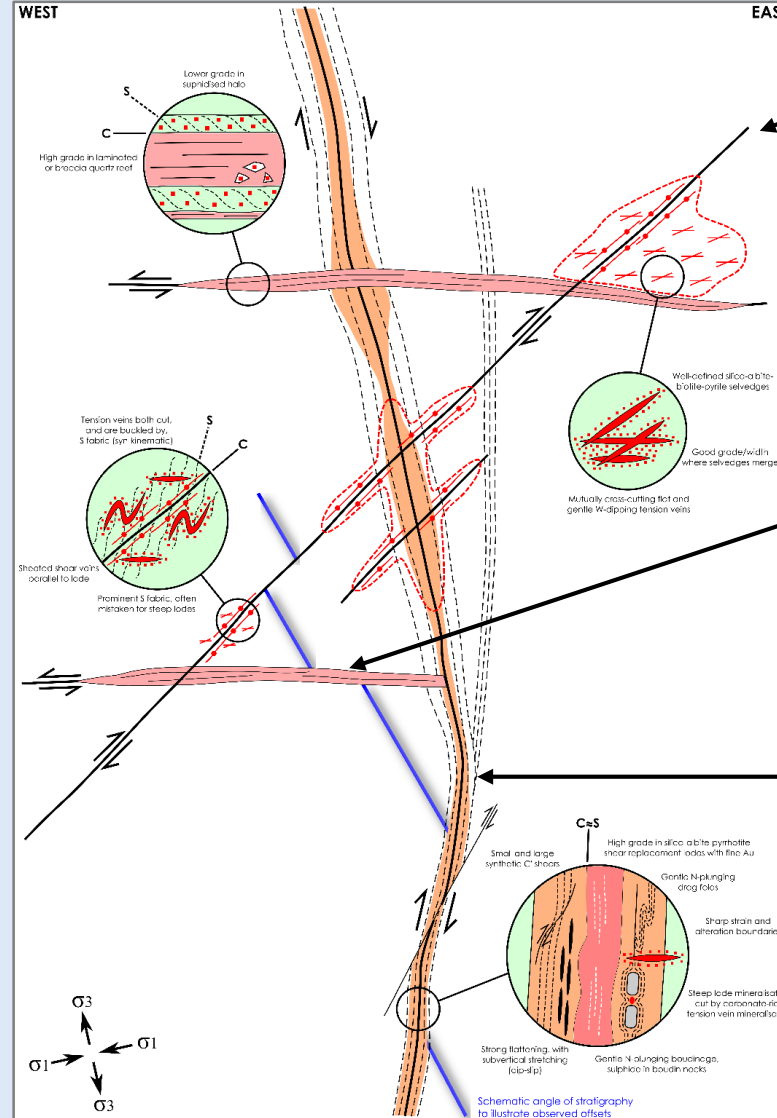
## End-of-hole Aircore Geochemistry



## Surface Geology



## Schematic cross-section



## Three regular, stacked lodes (high oz/vert. metre)

### WEST LODES

Late  
Brittle-ductile  
Lamprophyre link?  
**~15% contained Au**  
(including stockwork)

Biotite-albite-silica-  
carbonate-pyrite-  
pyrrhotite

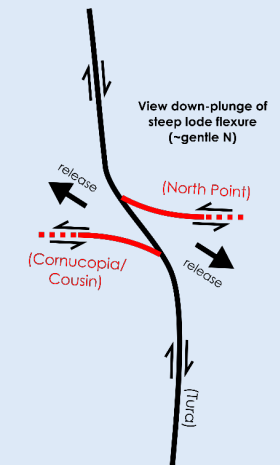
### FLAT LODES

Early-ish and incidental  
Linked to steep lodes  
Ductile-brittle  
**~30% contained Au**

Biotite-albite-silica-  
pyrrhotite-pyrite

### STEEP LODES

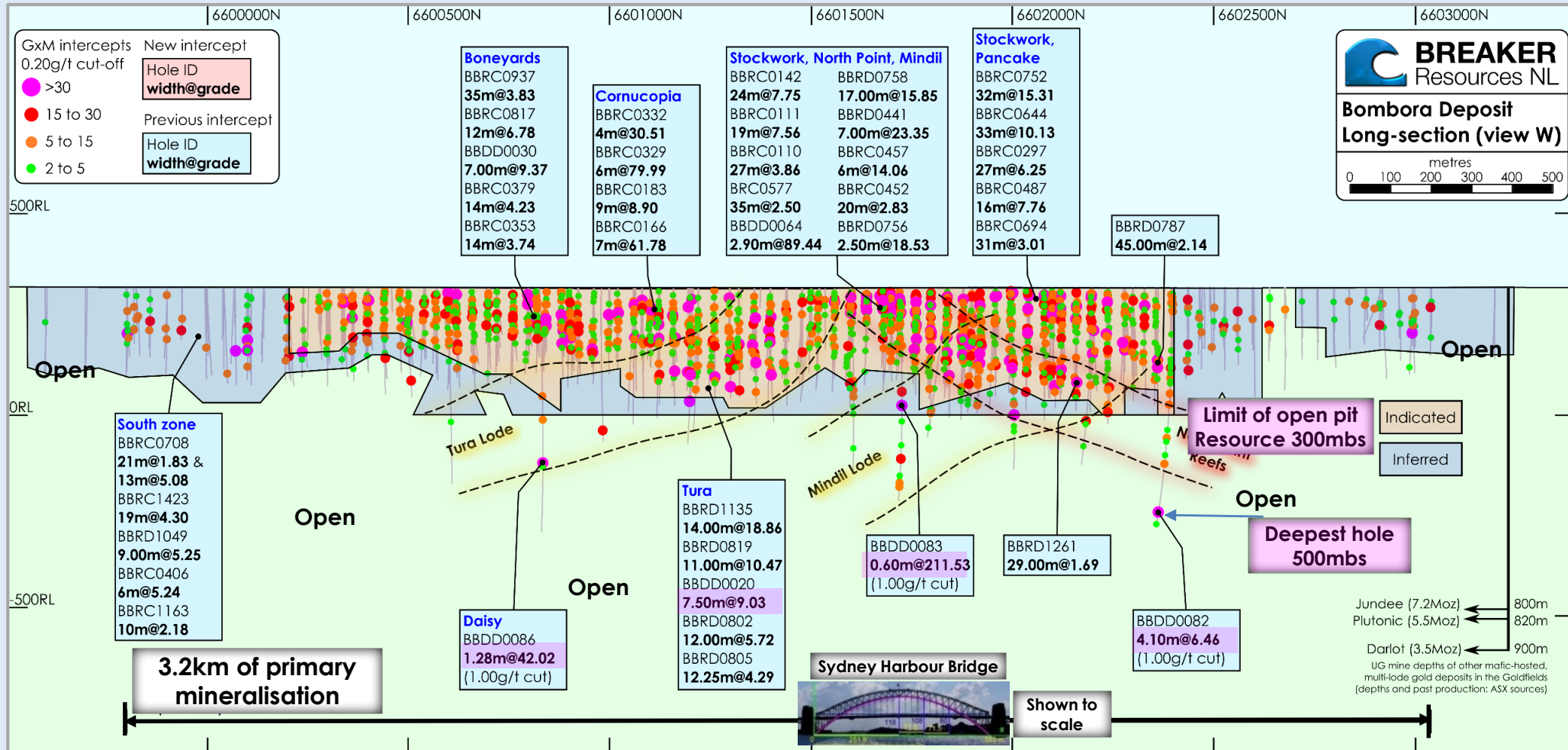
Early and fundamental  
Throughgoing  
Ductile  
Lode-style (vein-poor)  
**~50% contained Au**





# Exceptional drill hits close to surface and at depth

Long-section looking west\*

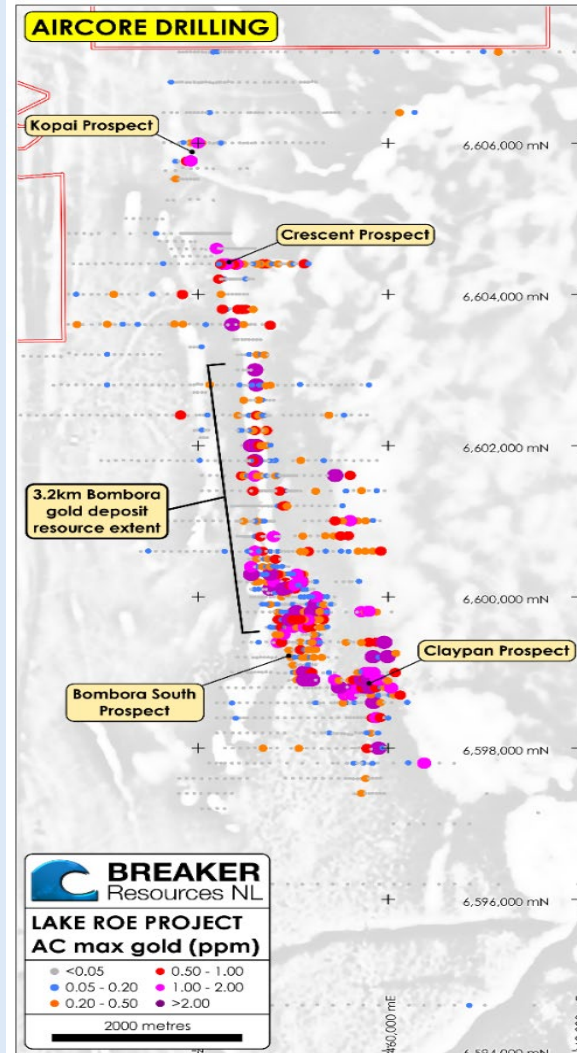


A large gold deposit limited by the extent of drilling

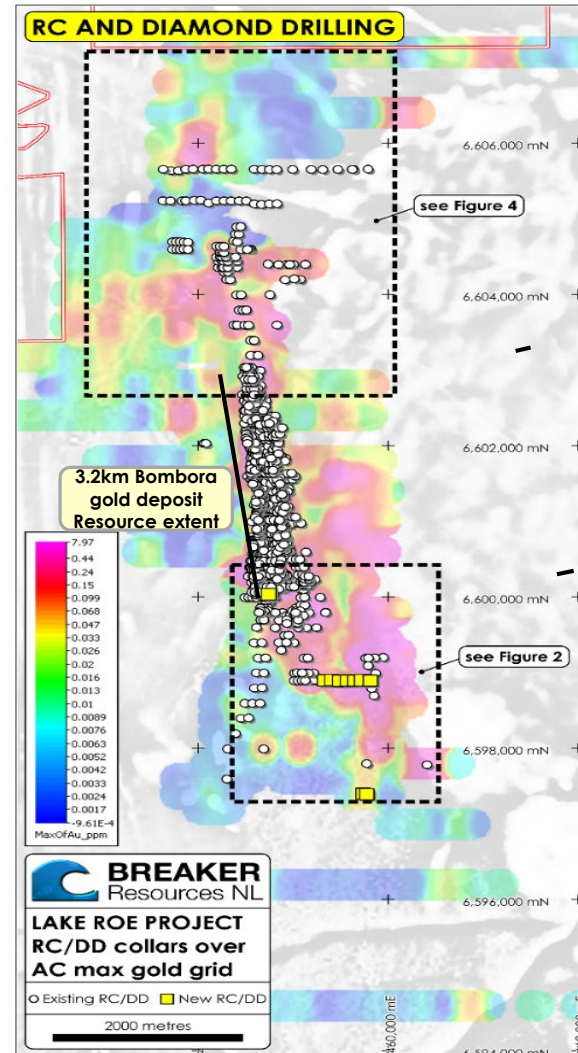


# Known gold system footprint much bigger than Resource area

Maximum gold in aircore drilling\*



RC & diamond drilling on imaged aircore maximum gold\*



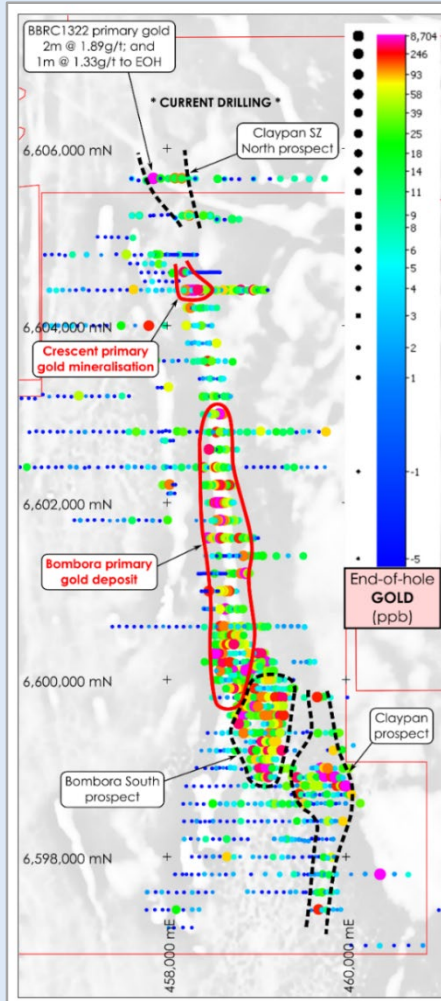
- ✦ The aircore (geochemical) drilling is used to guide the RC and diamond drilling

A large gold deposit limited by the extent of drilling

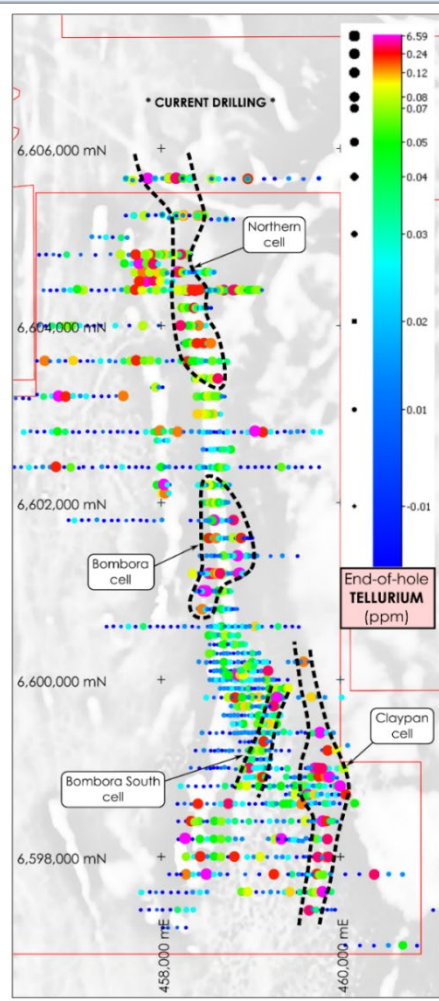
# Shallow drilling underway for growth/discovery along strike

## Aircore Drilling

### End-of-hole gold\*

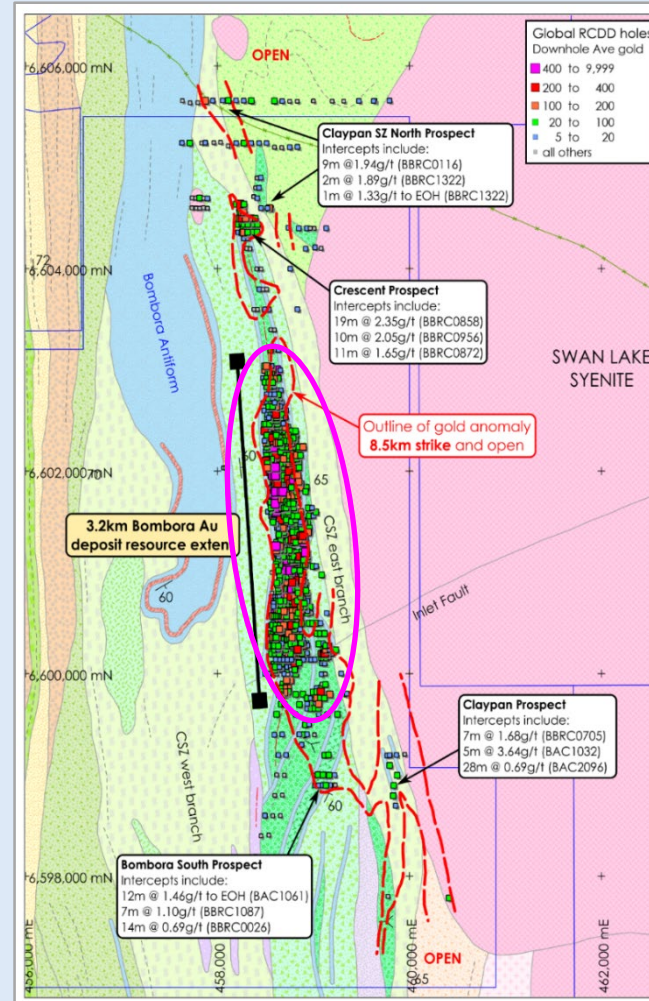


### End-of-hole tellurium\*



## RC & Diamond Drilling

### Downhole average gold (ppb)\*



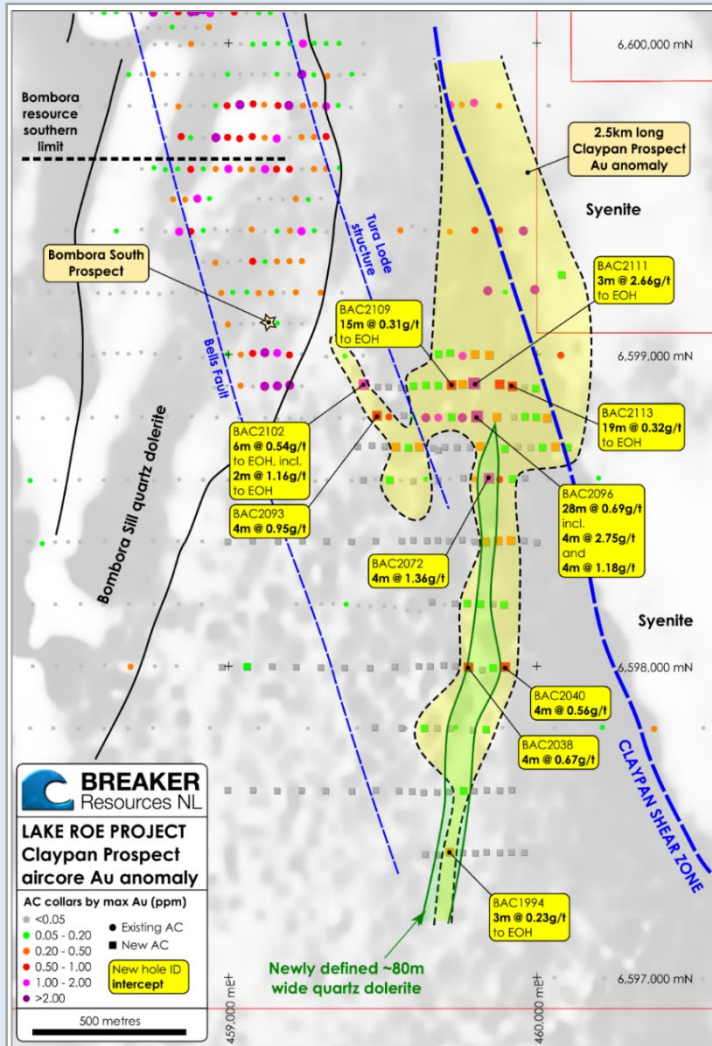
- ✦ High-grade reconnaissance drill intersections in many areas outside Resource

A large gold deposit limited by the extent of drilling

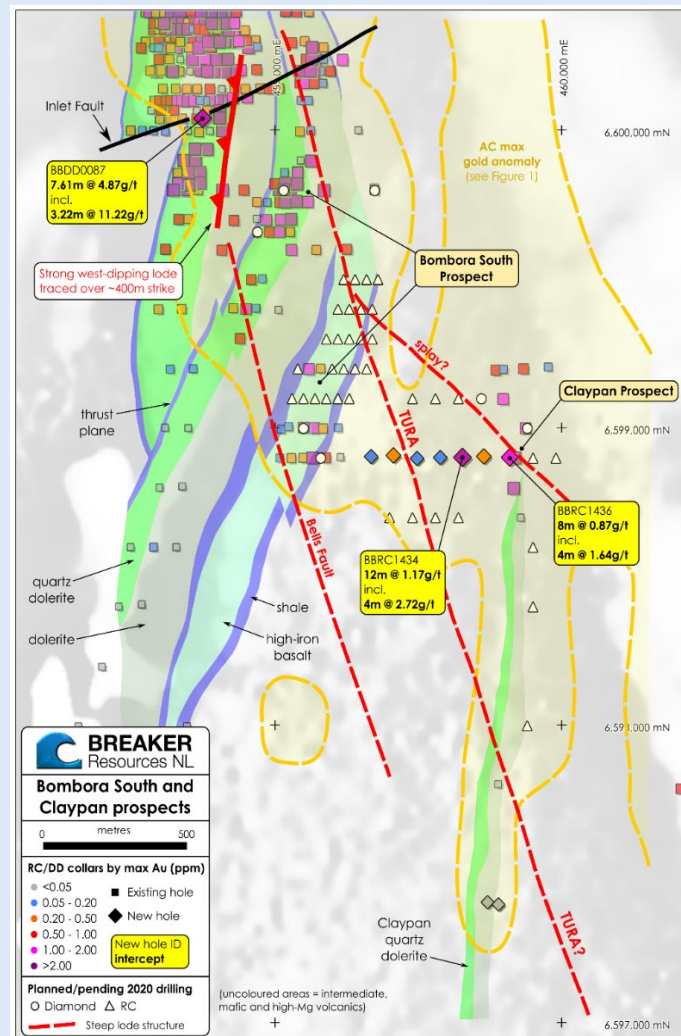


# South Extensions: Bombora South/Claypan Prospects

## Aircore Drilling\* Bombora South – Claypan



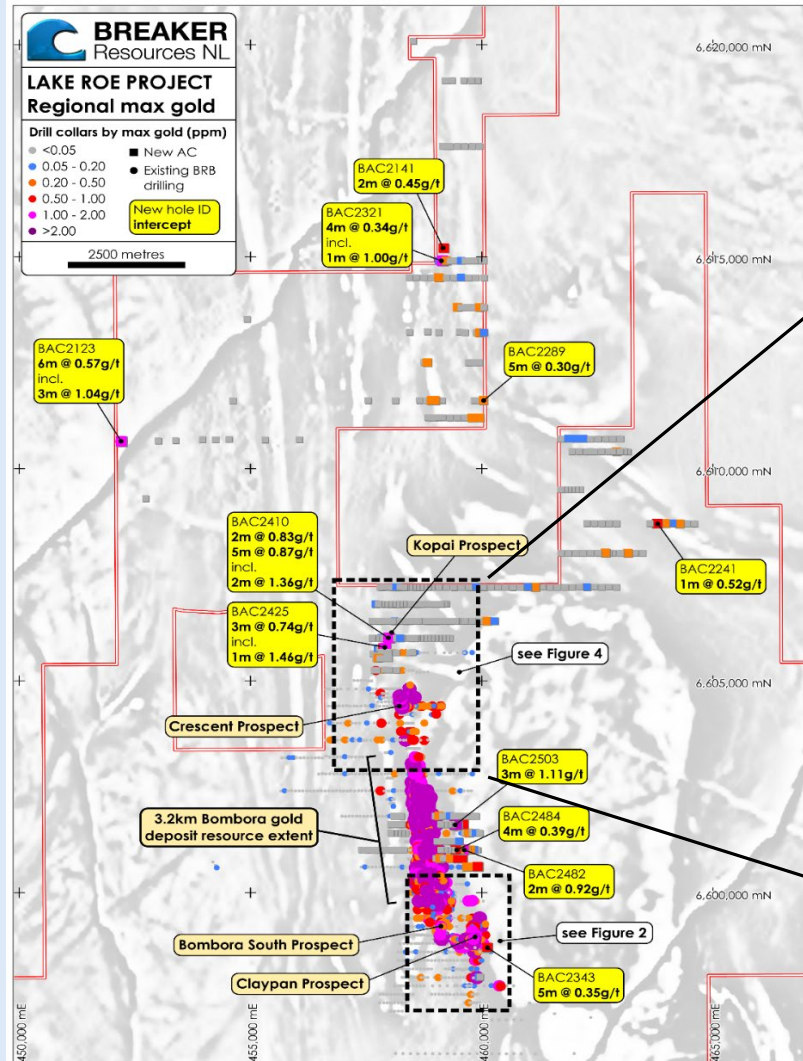
## RC & Diamond Drilling\* Bombora South – Claypan



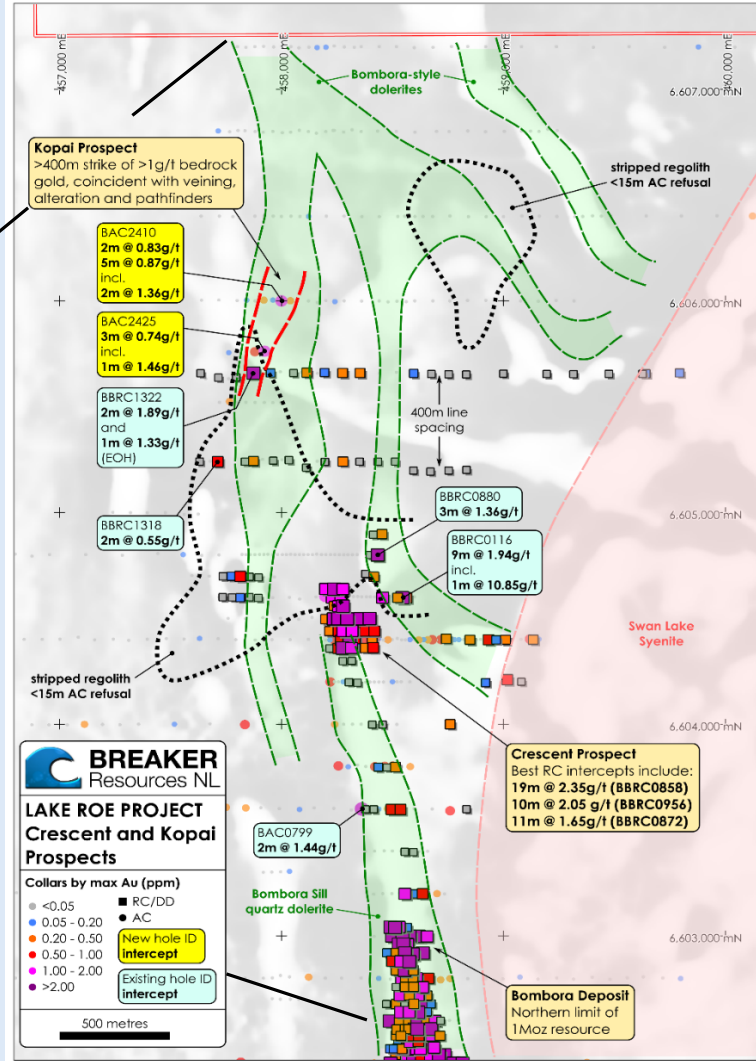
- ✦ Assay results pending
- ✦ We expect discovery based on the results to date



## Aircore Drilling\* Bombora – Crescent – Kopai – Far North



## RC & Diamond Drilling\* Bombora Nth – Crescent – Kopai



- ✦ RC drilling starts this week
- ✦ We expect discovery based on the results to date



# Fine lode gold → likely to go to great depth

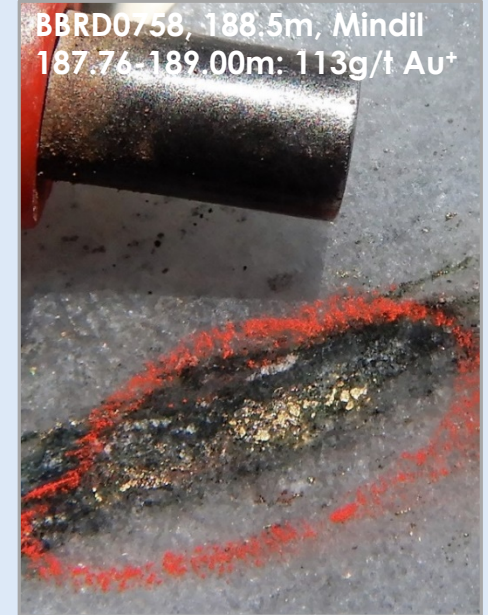


**Sam Cash, in Loaming for Gold (1934), on lode or "mustard" gold:**

*"A comparatively small amount of quartz is present, and highly mineralised, generally."*

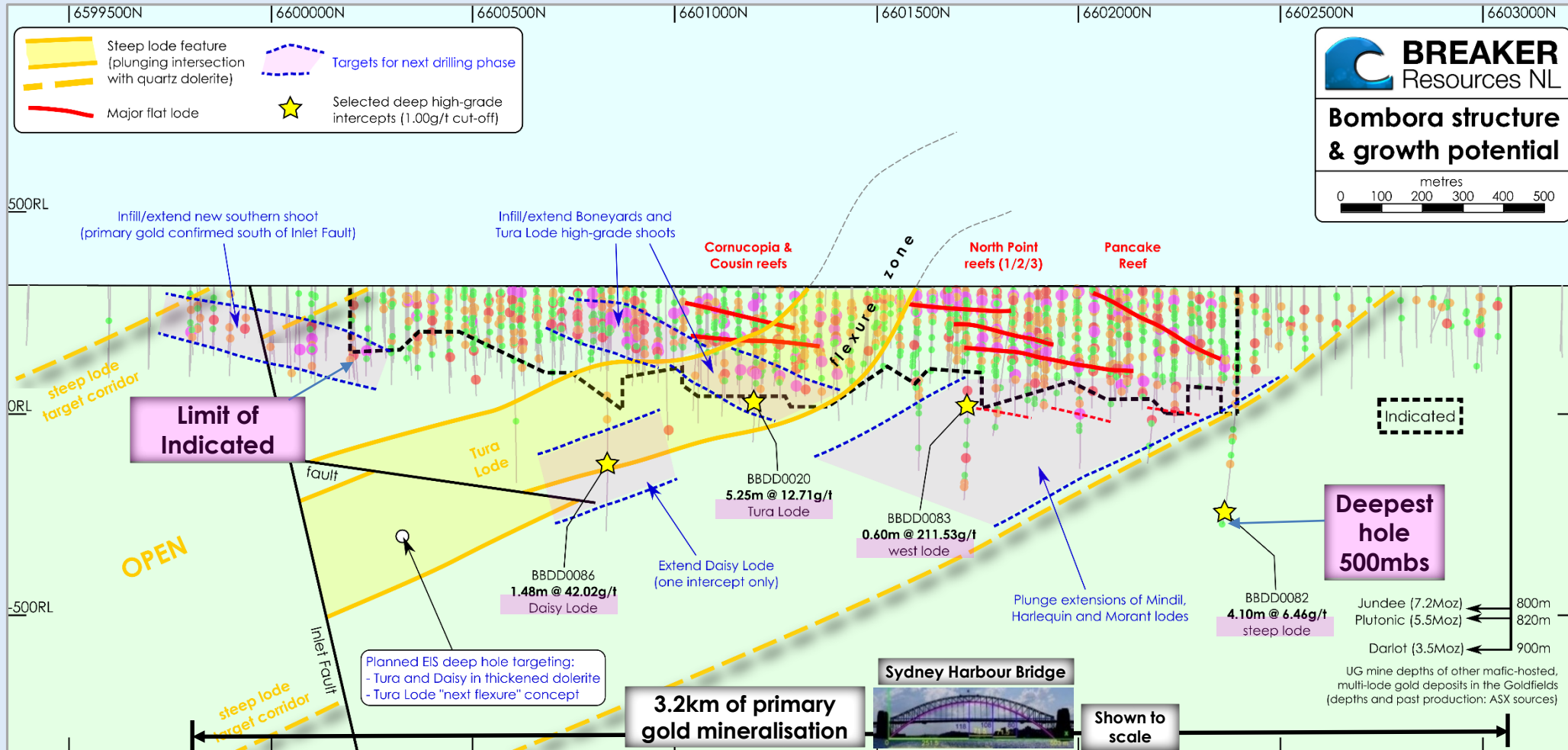
*"...it would be hard to resist saying that lodes carrying gold in that form are among those which maintain their values to a great depth."*

*"...anyone being fortunate enough to discover such a lode should not be afraid of it cutting out, or feel guilty of unfair dealing by asking a **price somewhat above** what he would be prepared to accept for a mine of another class."*



# Deep drilling underway...for growth at depth

Long-section looking west (showing 803koz Indicated part of Resource#)

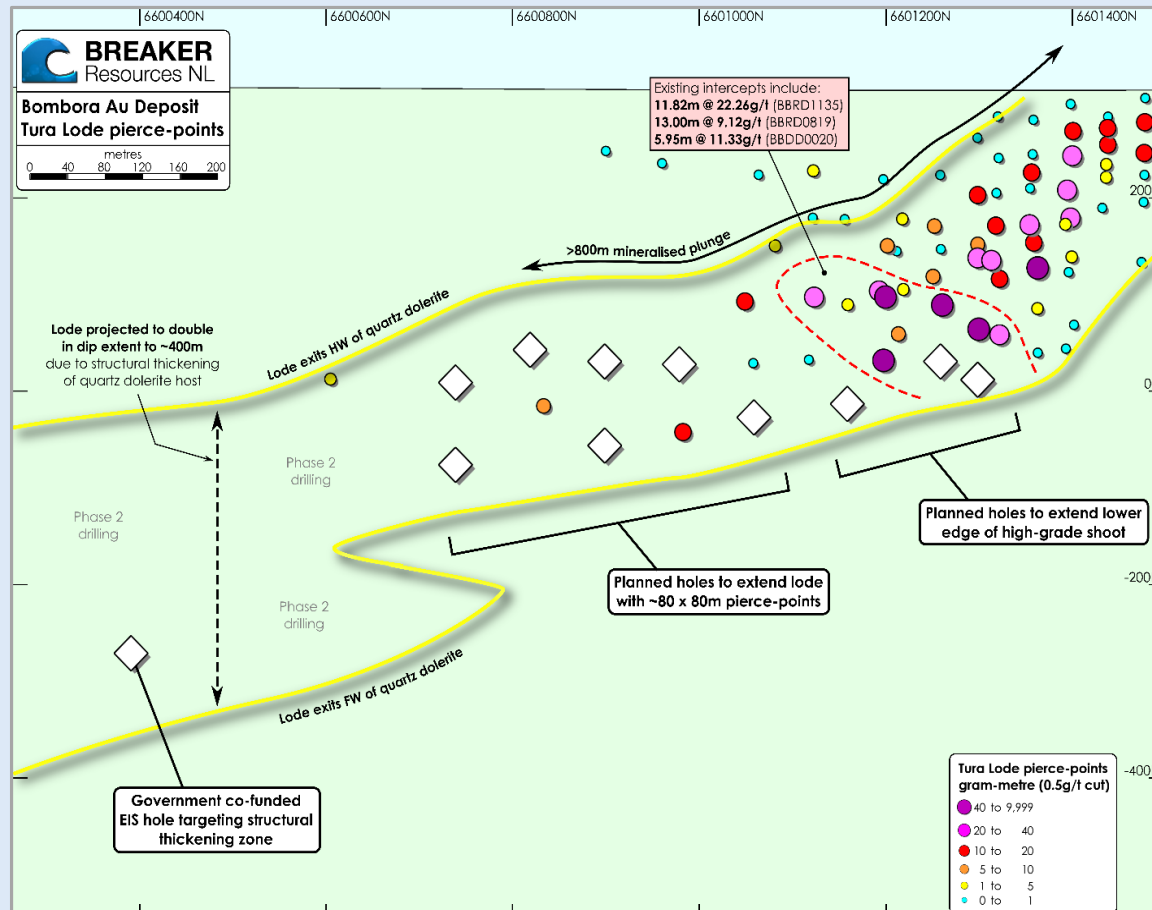


Shallow, high-grade gold → high-margin open pit mining potential  
Deeper intercepts → long-term underground mining potential

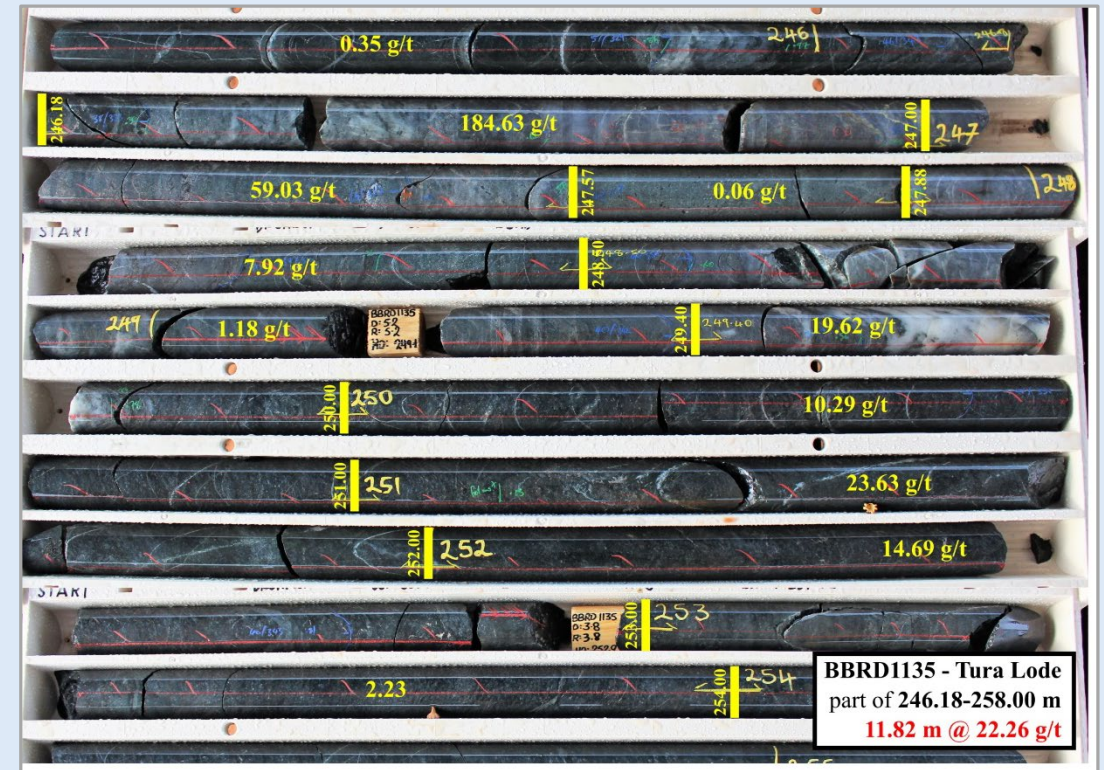


## Systematic extensional drilling of well-understood high-grade lode(s)

Tura Lode long-section (steep lode)



Tura Lode (diamond drill core)



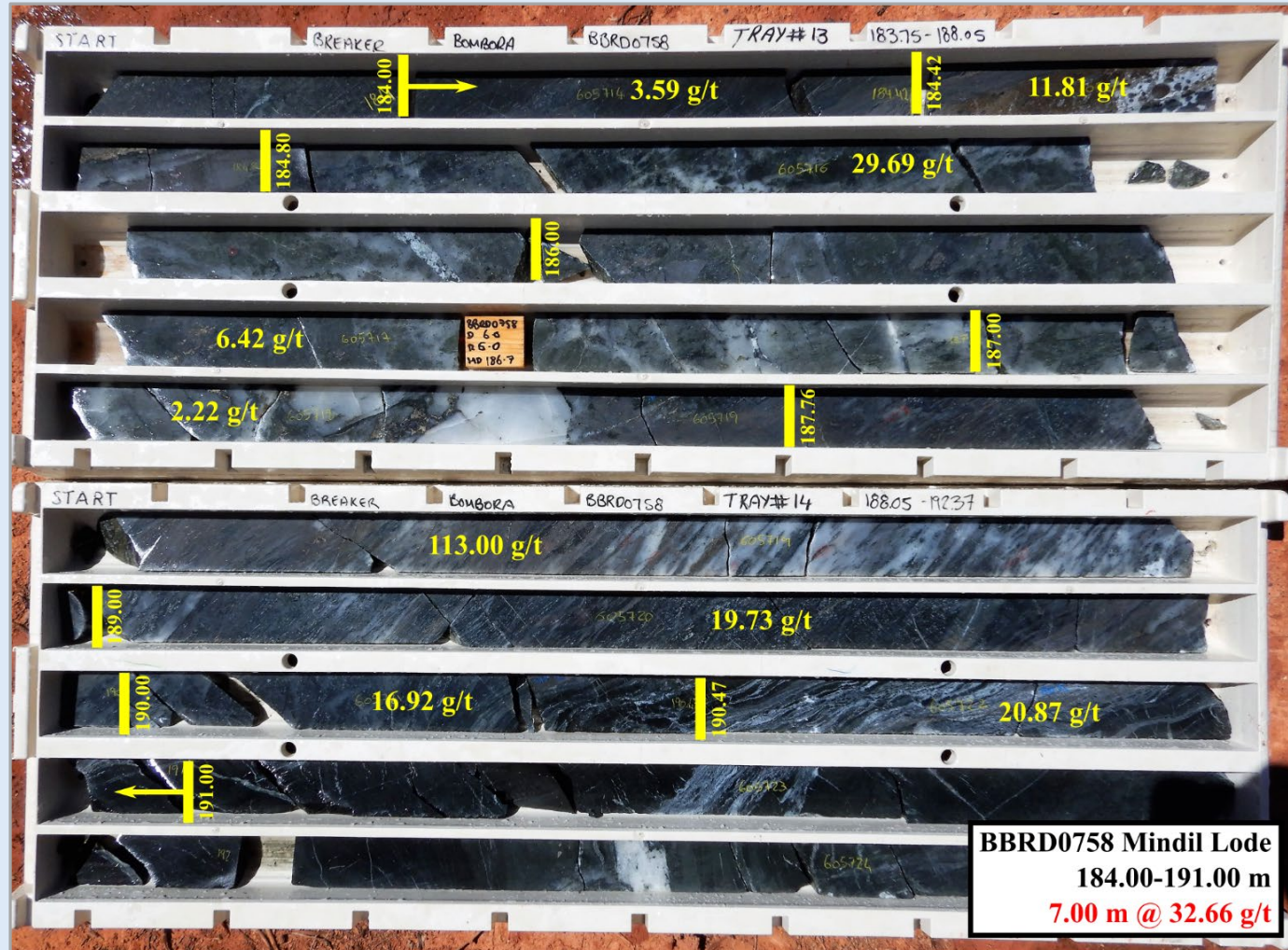
BBRD1135 - 11.82m @ 22.26g/t Au\*

➔ High grade, continuity, scale



# Deeper mining can add multiples to any open pit NPV

Mindil Lode (steep lode)



✦ **Mindil Lode BBRD0758\*:**

7m @ 32.66g/t Au

...excellent grade distribution

...open to south and north

✦ **Other Mindil intersections\*:**

✦ 2.5m @ 18.53g/t Au

✦ 2.8m @ 17.72g/t Au

✦ 16m @ 3.20g/t Au

✦ 10m @ 2.94g/t Au

✦ **Other “underground set-ups”**

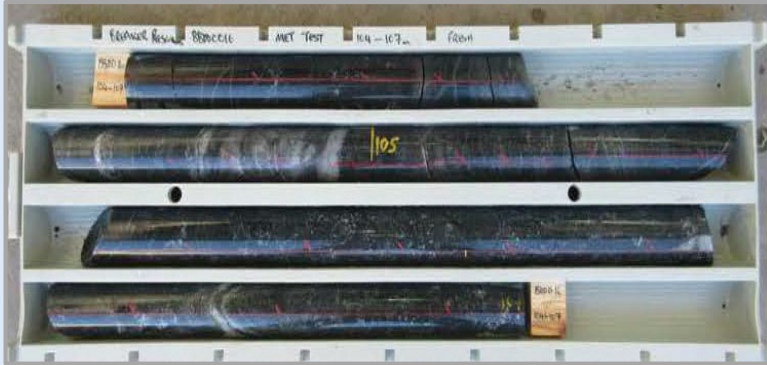
...high-grade flat lodes

...high-grade plunging shoots  
often with visible gold

(fault intersections)

...west-dipping lodes

# Metallurgy points to high recoveries and low costs\*



Comminution (oxide/fresh)



Gravity/cyanide extraction (oxide/fresh)

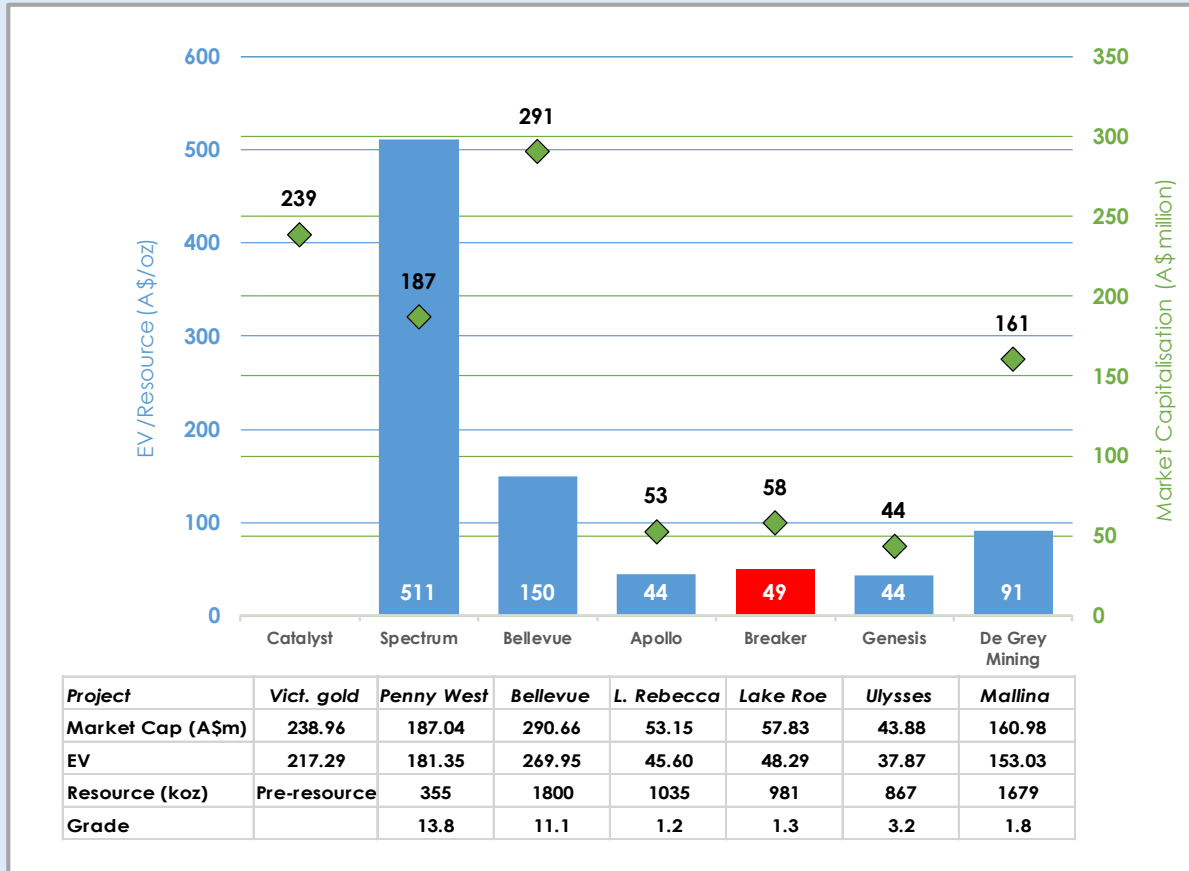
- ✦ **Modest ore hardness**  
Ball mill work index <16kWh/t for fresh mineralisation
- ✦ **Excellent gold recovery**  
96%-99% (oxide & fresh)
- ✦ **High gravity gold** 31%-77% (oxide)  
32%-90% (fresh)
- ✦ **Rapid gold leach kinetics**  
(90% gold in 4 hours)  
Low reagent consumption; no deleterious elements
- ✦ **Aiming for large standalone gold plant**  
(standard gravity/CIP/CIL plant)

➔ **Metallurgical results point to low-cost processing**



# Comparative value and share price catalysts

## Peer Comparison – Market capitalisation and EV/Resource oz



Breaker market capitalisation & enterprise value (EV) per Resource oz (A\$/oz)  
compared to peers (Data as of 10/02/2020)\*

### ✦ 1Moz# with outstanding growth potential

- But undervalued against peers\* (despite extensive de-risking)

### ✦ Imminent Price Catalyst 1

- Strong news flow from active drilling
- Three drill rigs underway
- Discovery is expected (based on results to date)

### ✦ Price Catalyst 2

- Resource growth
- ...with camp-scale upside

### ✦ Price Catalyst 3

- Development/monetisation (when the time is right)

# The people that made it happen







*With thanks to:*  
**Alastair Barker**  
**Michael Outhwaite**

**and:**  
Harry Mees  
Stephane Roudaut  
Dan Bristow  
George Katchan  
Tom Gee  
Christine Shore  
Jane McIntyre  
Jonathan Vigier



## Summary of source data for EV/Resource oz

	CYL	SPX	BGL	AOP	BRB	GMD	DEG
<b>Shares</b> (Appendix 2A or 3B)	3/02/2020	2/12/2019	22/11/2019	29/04/2019	19/11/2019	25/09/2019	6/12/2019
<b>Price</b> (ASX Closing Price)	10/02/2020	10/02/2020	10/02/2020	10/02/2020	10/02/2020	10/02/2020	10/02/2020
<b>Debt</b> (Quarterly Cashflow Report)	31/01/2020	31/01/2020	20/01/2020	30/01/2020	31/01/2020	17/01/2020	31/01/2020
<b>Cash</b> (Quarterly Cashflow Report)	31/01/2020	31/01/2020	20/01/2020	30/01/2020	31/01/2020	17/01/2020	31/01/2020
<b>Resources</b> (ASX Announcement)	n/a	31/01/2020	11/07/2019	10/02/2020	2/09/2019	19/12/2019	16/07/2019

## Resource category breakdown

	RESOURCES	
	Measured & Indicated	Inferred
<b>CYL</b>	-	-
<b>SPX</b>	0.47Mt @ 17.8g/t Au for 268,000oz	0.33Mt @ 8.2g/t Au for 87,500oz
<b>BGL</b>	-	5.00Mt @ 11.1g/t Au for 1,800,000oz
<b>AOP</b>	11.70Mt @ 1.5g/t Au for 550,000oz	15.40Mt @ 0.97g/t Au for 485,000oz
<b>BRB</b>	18.36Mt @ 1.4g/t Au for 803,000oz	4.85Mt @ 1.1g/t for 178,000oz
<b>GMD</b>	5.41Mt @ 3.3g/t Au for 574,000oz	3.07Mt @ 3.0g/t Au for 293,200
<b>DEG</b>	16.97Mt @ 1.8g/t Au for 999,100oz	12.68Mt @ 1.7g/t Au for 680,700oz