

ASX ANNOUNCEMENT

26 March 2020

Operations Update – COVID-19 Response

Key Points

- Appropriate actions implemented to minimise the impact of the current public health and economic crisis on Trigg Mining and our key stakeholders.
- All field-based exploration at the Lake Throssell Sulphate of Potash Project in WA suspended until circumstances permit, in order to comply with the State Government travel restrictions and the request of the Ngaanyatjarra, the Traditional Owners of the Lake Throssell Sulphate of Potash Project.
- Non-core tenure outside of the Company's high-grade Lake Throssell discovery and Lake Rason satellite project surrendered, reducing the area by half and the annual minimum commitments accordingly.
- The Company's total tenure is now 1,660km² with 1,010km² granted and 650km² under applications.
- Cost reductions being implemented include a reduction in Director fees, staff costs and other outgoings in order to preserve the Company's cash (~\$2 million) during this difficult time.
- Trigg Mining will be in a sound position when conditions improve to re-commence exploration, with POW's for drilling already submitted and contractors selected for the planned maiden air-core drilling program at the high-grade Lake Throssell SOP Project.

Trigg Mining Limited (ASX: TMG) (Trigg or the Company) advises that it has taken a number of precautionary measures in response to the current COVID-19 pandemic.

In order to comply with the State Government travel restrictions and the request of the Ngaanyatjarra, the Traditional Owners of the Lake Throssell Sulphate of Potash Project, Trigg Mining has suspended all field-based exploration at Lake Throssell until circumstances permit a return to the field.

The Company maintains a good cash balance of approximately \$2 million and is implementing measures to conserve cash including a reduction in Director fees, staff costs and other outgoings.

As part of its ongoing strategy to focus on the high-grade discovery at Lake Throssell and the satellite Lake Rason Project, which has an Inferred Mineral Resource of 6Mt of SOP, the Company has surrendered non-core tenure. This has reduced the total amount of tenure held by the Company by 50 per cent, with a corresponding reduction in annual minimum expenditure. The Company's granted tenure is now 1,009km² with 654km² under applications for a total area of 1,663km².

Sulphate of Potash is an agricultural mineral entirely imported into Australia and a critical component of global food security. It is an essential component of the global food supply chain will continue to be in demand throughout the pandemic to ensure global food security. Various governments around the world are declaring the fertiliser industry as essential and will continue to supply farmers.

The scale and potential duration of the COVID-19 pandemic and its market consequences are such that the Board considers it wise to take every step necessary to protect its people, our indigenous communities and preserve cash to enable the Company to act strongly and decisively once this situation has abated.

Trigg Mining Managing Director, Keren Paterson, said: “These are difficult times for the world community, for Australia and our economy. We will do everything we can to support the fight against COVID-19 and to keep Trigg in good shape to allow for a swift return to exploring and developing the Company’s two key Sulphate of Potash Projects in Western Australia. SOP is an essential mineral for global food security and one that is almost entirely imported to Australia for our agricultural product.”

Trigg Mining Limited



Keren Paterson
Managing Director

For more information please contact:

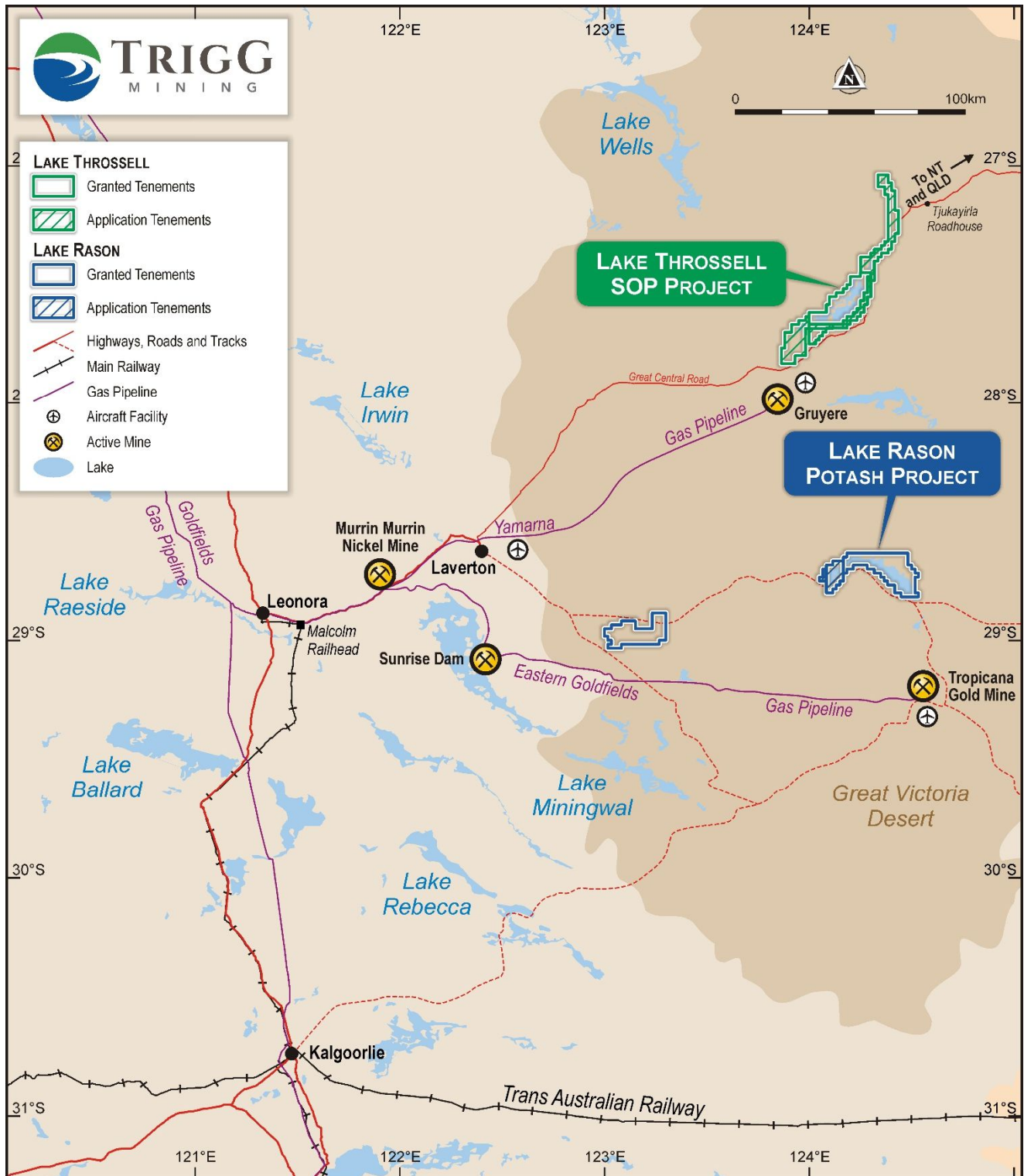
Keren Paterson
Managing Director
Trigg Mining Limited
T: (08) 6114 5685
E: info@triggmining.com.au

Nicholas Read
Investor and Media Relations
Read Corporate
T: (08) 9388 1474
E: nicholas@readcorporate.com.au

About Trigg Mining

Trigg Mining is looking to secure Australia’s sustainable agriculture future through the exploration of essential potassium fertiliser, sulphate of potash (SOP), necessary for global food production and human nutrition. SOP provides essential macro nutrients for plant growth without any detrimental elements, such as chloride found in muriate of potash (MOP). In addition, SOP can be produced sustainably through the solar evaporation of potassium-rich hypersaline brine water, without the need for large open pits or waste-rock dumps.

The Trigg Mining SOP Projects (Figure 1) are located nearby established energy and transport infrastructure for access to Australian and international agricultural markets, approximately 170km east of Laverton in WA and including the high-grade discovery at Lake Throssell and a JORC Compliant Mineral Resource at Lake Rason. The Projects cover 1,660km² and contain over 380km² of salt lake playa and 170km of interpreted palaeochannels (ancient underground rivers) all highly prospective for brine hosted SOP.



Location of Trigg Mining's SOP Projects
showing established infrastructure