

Kathleen Valley Lithium-Tantalum Project: Drilling, Operations and Strategy Update in Response to COVID-19

Liontown well placed to maintain development momentum at Kathleen Valley

HIGHLIGHTS

- Resource definition drilling now completed at the 100%-owned Kathleen Valley Lithium-Tantalum Project in WA, with further strong results received from RC / diamond drilling:

30.1m @ 2.8% Li₂O from 322m (KVDD0071), including:

- 20.2m @ 3.8% Li₂O from 327m

19.9m @ 2.6% Li₂O from 393.1m (KVDD0072), including:

- 12.9m @ 3.6% Li₂O from 393.8m

33.4m @ 1.8% Li₂O from 200.3m (KVGT011), including:

- 9.5m @ 2.3% Li₂O from 201m and
- 6m @ 2.4% Li₂O from 222m

24m @ 1.6% Li₂O from 300m (KVRC0294), including:

- 4m @ 2.2% Li₂O from 303m

38m @ 1.7% Li₂O from 191m (KVRC0295), including:

- 27m @ 1.9% Li₂O from 199m

24m @ 1.6% Li₂O from 163m (KVRC0297), including:

- 4m @ 2.0% Li₂O from 170m

36m @ 1.6% Li₂O from 212m (KVRC0299), including:

- 11m @ 2.0% Li₂O from 232m

97m @ 1.9% Li₂O from 323m (KVRC0304), including:

- 36m @ 3.6% Li₂O from 324m

(True widths – 70 -100% of down-hole widths. See Appendices 1 and 2 for further details including tantalum assays)

- Latest results further reinforce the continuity of high-grade lithium mineralisation, which has been defined over a strike length of 1.7km and to a vertical depth of 600m. The system remains open both to the north-west and down-dip.
- A new MRE will now be prepared based on data from 445 holes (totaling 86,737m) drilled since work began on the Project in 2017.
- In light of the impact of COVID-19, Liontown has reviewed its available capital and re-assessed its priorities. The Company is adequately funded; however, given the substantial increase in the MRE and, importantly, the delineation of a high-grade (>1.5% Li₂O) zone at depth, the Company will postpone the compilation of a DFS and instead produce an upgraded PFS based on an optimised project configuration in Q4 2020.

Liontown Resources Limited (ASX: LTR, “Liontown” or “Company”) provides the following update on activities at the 100%-owned **Kathleen Valley Lithium-Tantalum Project** in WA and its strategic response and forward plan in light of the COVID-19 pandemic.

Resource Definition Drilling

The Company is pleased to advise that it has now completed resource definition drilling at Kathleen Valley. The most recent drilling follows the announcement of an interim Mineral Resource Estimate (MRE) upgrade of **139Mt @ 1.3% Li₂O and 140ppm Ta₂O₅** which confirmed Kathleen Valley as a Tier-1 hard-rock spodumene-lithium resource (see ASX announcement dated 13th February 2020).

The latest results continue to demonstrate the continuity of high-grade mineralisation at Kathleen Valley, with the system remaining open both down-dip and along strike to the north-west (**Figure 1**). An updated MRE will be prepared once all assays are received.

Since drilling re-commenced in late August 2019, 52 new RC holes have been drilled, 11 previous RC holes have been extended and 48 new diamond core holes have been drilled for a total of 39,102m. Twelve of the diamond core holes have been drilled for geotechnical purposes.

This report includes new assays for five diamond core holes (KVDD0071-0075), fourteen RC holes (KVRC0294-0299 and KVRC0301-0308) and three geotechnical holes (KVG010-KVG012A). Refer to **Appendices 1 and 2** for a full listing of drill statistics including tantalum assays and assays pending.

The total drilling completed by Liontown at Kathleen Valley since work commenced in 2017 comprises 445 holes for 86,737m, including 355 RC holes for 63,161m and 90 diamond core holes for 23,576m. This total includes 39 RC holes which were extended following the receipt of results along strike that indicated the potential for deeper mineralisation.

Response to COVID-19

Due to the impact of COVID-19, Liontown has reassessed its strategic objectives and funding position to ensure that it can maintain development momentum at Kathleen Valley in 2020.

To conserve cash, effective from the April 1st 2020, the non-executive directors of Liontown have agreed to defer all fees they receive from the Company. In addition, the CEO (David Richards) and COO (Adam Smits) have agreed to reduce the cash component of their remuneration by 45% and 40% respectively for the foreseeable future. The Board is considering equity compensation to be granted in lieu of reduced salaries and fees, details of which will be provided in due course. Liontown will also reduce short – medium term expenditure by postponing lower priority corporate and field-based activities until 2021.

In line with its commitments to safeguard the health and well-being of its employees and contractors, Liontown has introduced company-wide protocols consistent with the current advice from the Government and health authorities. Liontown continues to monitor the advice to ensure its protocols remain relevant.

Kathleen Valley – Next Steps

Outside of the significant challenges in the macro-environment, the Company believes that the recent substantial increase in the Kathleen Valley MRE has highlighted a number of strategic opportunities to optimise and improve the planned development configuration of the Project compared with that outlined in the December 2019 Pre-Feasibility Study (PFS).

For example, drilling since August 2019 has confirmed significant widths of high-grade mineralisation (>1.5% Li₂O) at depth, leading Liontown to investigate the possible underground extraction of portions of the resource that will enable higher grade ore to be fed to the planned processing plant – thereby potentially improving recovery, product quality and operating margins.

A sighter test work program has been also initiated, focused on the relationships between grade and recoveries and the recovery of tantalum, which will enable a much more detailed R&D test work program to be pursued during 2020. This will ultimately lead to process flowsheet updates and commensurate changes to the site layout, capital and, importantly, operating cost estimates.

A significant focus of the programs to be undertaken this year is on plant operability and the ability to produce a premium-quality product that can be marketed accordingly.

In light of the impact of COVID-19 together with the potential improvements and enhancements to the Project, Liontown has decided to postpone the Definitive Feasibility Study (DFS) and will instead produce an upgraded PFS that is closely aligned to the Project's updated MRE. The upgraded PFS will build on the 2019 PFS and incorporate:

- The updated MRE due in late April/early May;
- Updated lithium test work R&D results;
- Tantalum test work R&D results;
- Revised/updated process flowsheets based on the test work;
- Revised mine designs that may include both open pit and underground mine plans;
- A revised site layout; and
- Revised capital and operating cost estimates.

The upgraded PFS ($\pm 25\%$ accuracy) will provide a significantly better basis for a DFS ($\pm 15\%$ accuracy), which is now planned to commence in 2021.

Based on the current lithium market conditions, the Company's financial position and anticipated COVID-19 constraints over the coming months, Liontown believes that an upgraded PFS will give its shareholders the best value for ongoing expenditure. The Company intends to keep the market fully informed through regular technical bulletins leading up to the Q4 PFS upgrade.

This approach will ensure that Liontown is adequately funded to take the Kathleen Valley Project forward as planned.

This announcement has been authorised for release by the Board.

A handwritten signature in black ink, appearing to read "David Richards".

DAVID RICHARDS
Managing Director

For More Information:

David Richards
Managing Director
T: +61 8 9322 7431
info@ltresources.com.au

Investor Relations:

Nicholas Read
Read Corporate
T: +61 8 9388 1474
nicholas@readcorporate.com.au

Competent Person Statement

The Information in this report that relates to Exploration Results is based on and fairly represents information and supporting documentation prepared by Mr David Richards, who is a Competent Person and a member of the Australasian Institute of Geoscientists (AIG). Mr Richards is a full-time employee of the company. Mr Richards has sufficient experience that is relevant to the style of mineralisation and type of deposit under consideration and to the activities being undertaken to qualify as a Competent Person as defined in the 2012 Edition of the 'Australasian Code for Reporting of Exploration Results, Mineral Resources and Ore Reserves'. Mr Richards consents to the inclusion in the report of the matters based on his information in the form and context in which it appears.

The information in this report that relates to Mineral Resources for the Kathleen Valley Project is extracted from the ASX announcement "Kathleen Valley Lithium Resource hits 139Mt @ 1.3% Li₂O as latest drilling success underpins 86% increase" released on the 13th February 2020 which is available on www.ltresources.com.au.

The company confirms that it is not aware of any new information or data that materially affects the information included in the original market announcement. The Company confirms that the form and context in which the Competent Person's findings are presented have not been materially modified from the original market announcement.

Forward Looking Statement

This announcement contains forward-looking statements which involve a number of risks and uncertainties. These forward-looking statements are expressed in good faith and believed to have a reasonable basis. These statements reflect current expectations, intentions or strategies regarding the future and assumptions based on currently available information. Should one or more of the risks or uncertainties materialise, or should underlying assumptions prove incorrect, actual results may vary from the expectations, intentions and strategies described in this announcement. No obligation is assumed to update forward looking statements if these beliefs, opinions and estimates should change or to reflect other future developments.

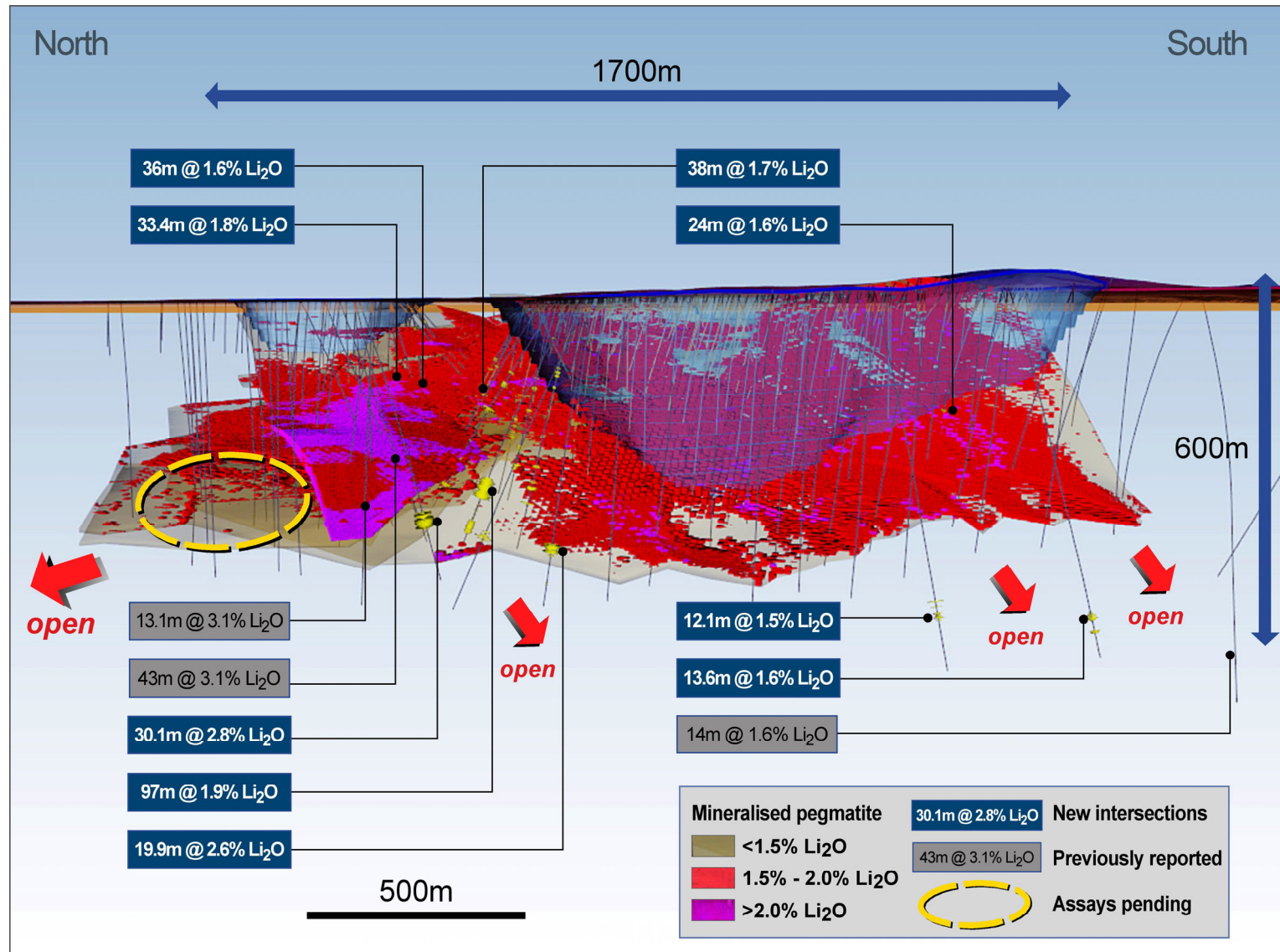


Figure 1: Kathleen Valley – 3D image showing high grade (>1.5% Li₂O) blocks within block model for interim MRE update and latest drill intersections.

Appendix 1 – Kathleen Valley – Reverse Circulation Drill hole statistics

Hole_ID	East	North	RL	Dip	Azimuth	Depth (m)	Significant Li ₂ O (>0.4%) and Ta ₂ O ₅ (>50ppm) results				
							From(m)	To(m)	Interval(m)	Li ₂ O (%)	Ta ₂ O ₅ (ppm)
KVRC0001	258306	6958744	509	-60	45	65	3	6	3	1	122
							10	11	1	1.1	85
							16	17	1	1.1	94
KVRC0002	258379	6958675	511	-60	225	109	0	13	13	1.6	114
							incl. 9m @ 1.9% Li₂O and 107ppm Ta₂O₅ from 2m				
							26	29	3	1.3	101
							35	36	1	1.6	127
							83	96	13	1.6	111
							incl. 6m @ 2% Li₂O and 113ppm Ta₂O₅ from 88m				
KVRC0003	258395	6958690	511	-59	225	155	91	105	14	1.7	163
							incl. 8m @ 2% Li₂O and 130ppm Ta₂O₅ from 92m				
KVRC0004						89	36	38	2	1	99
							45	56	11	1.2	100
KVRC0004A*	258348	6958645	512	-50	45	256	incl. 3m @ 1.8% Li₂O and 106ppm Ta₂O₅ from 45m				
							125	133	8	1.1	223
							incl. 1m @ 1.6% Li₂O and 275ppm Ta₂O₅ from 128m				
							161	166	5	1.3	273
							incl. 1m @ 2% Li₂O and 167ppm Ta₂O₅ from 162m				
							215	234	19	1.6	138
							incl. 1m @ 2.9% Li₂O and 240ppm Ta₂O₅ from 216m and 6m @ 1.8% Li₂O and 140ppm Ta₂O₅ from 218m and 3m @ 2.3% Li₂O and 82ppm Ta₂O₅ from 226m and 2m @ 2.2% Li₂O and 156ppm Ta₂O₅ from 232m				
							and 2m @ 2.2% Li₂O and 156ppm Ta₂O₅ from 232m				
KVRC0005	258276	6958707	510	-53	40	89	32	34	2	1.3	112
							39	40	1	1.5	132
KVRC0005A*						178	150	154	4	1.4	265
							incl. 1m @ 1.9% Li₂O and 229ppm Ta₂O₅ from 152m				
KVRC0006	258433	6958654	512	-50	227.5	80	37	43	6	1.1	153
							29	35	6	1.4	170
KVRC0007	258452	6959426	508	-47	45	132	incl. 3m @ 1.9% Li₂O and 166ppm Ta₂O₅ from 30m				
							39	40	1	1.1	198
							124	125	1	2.4	302
KVRC0008	258512	6959469	508	-50	55	130	81	82	1	1.2	310
							95	96	1	1	124
KVRC0008A						316	214	220	6	0.9	167
							incl. 1m @ 1.7% Li₂O and 168ppm Ta₂O₅ from 218m				
KVRC0009	258590	6959528	509	-50	45	113	57	59	2	0.7	248
							70	71	1	0.6	266
KVRC0010	258593	6959527	509	-50	225	130	83	85	2	1.1	211
							91	92	1	1.4	239
							100	106	6	1.2	284
KVRC0011	258208	6958788	508	-50	45	89	24	25	1	1	112
KVRC0012	258154	6958729	509	-55	45	65	No significant assays				
KVRC0013	258205	6958930	507	-50	45	108					
KVRC0014	258157	6958881	506	-50	45	113					
KVRC0015	258443	6958652	512	-50	180	241	12	17	5	0	240
							135	193	58	1.2	156
							incl. 9m @ 1.8% Li₂O and 220ppm Ta₂O₅ from 141m and 13m @ 2.0% Li₂O and 138ppm Ta₂O₅ from 67m and				
							206	230	24	1.3	139
							incl. 3m @ 1.6% Li₂O and 105ppm Ta₂O₅ from 208m and 2m @ 2.6% Li₂O and 271ppm Ta₂O₅ from 217m and 4m @ 1.6% Li₂O and 145ppm Ta₂O₅ from 226m and				

Appendix 1 (cont.) – Kathleen Valley – Reverse Circulation Drill hole statistics

Hole_ID	East	North	RL	Dip	Azimuth	Depth (m)	Significant Li ₂ O (>0.4%) and Ta ₂ O ₅ (>50ppm) results				
							From(m)	To(m)	Interval(m)	Li ₂ O (%)	Ta ₂ O ₅ (ppm)
KVRC0016	258331	6958764	509	-50	45	40	No significant assays				
KVRC0017	257899	6958809	507	-50	45	119	63	65	2	1.3	212
KVRC0018	257951	6958853	506	-50	45	101	1	2	1	1.4	93
KVRC0019	258252	6958969	507	-50	45	89	No significant assays				
KVRC0020	258702	6958251	532	-60	45	80	26	48	22	1.2	170
							incl. 5m @ 1.7% Li₂O and 126ppm Ta₂O₅ from 26m				
							incl. 10m @ 1.6% Li₂O and 244ppm Ta₂O₅ from 34m				
KVRC0021	258675	6958223	535	-55	45	140	65	75	10	0.9	179
							incl. 7m @ 1.1% Li₂O and 205ppm Ta₂O₅ from 68m				
							85	88	3	0.8	305
							incl. 1m @ 1.3% Li₂O and 277ppm Ta₂O₅ from 86m				
							103	106	3	1.5	237
incl. 2m @ 1.8% Li₂O and 246ppm Ta₂O₅ from 103m											
KVRC0022	258735	6958215	528	-55	45	80	20	30	10	1.3	199
incl. 6m @ 1.7% Li₂O and 209ppm Ta₂O₅ from 24m											
KVRC0023	258708	6958186	529	-55	45	100	52	58	6	1.5	260
incl. 5m @ 1.7% Li₂O and 246ppm Ta₂O₅ from 53m											
KVRC0024	258665	6958285	543	-55	45	112	18	33	15	1.4	139
							incl. 11m @ 1.6% Li₂O and 132ppm Ta₂O₅ from 20m				
							49	51	2	0.7	141
							93	98	5	0.8	173
KVRC0025	258636	6958260	544	-55	45	160	61	75	14	1.6	121
							incl. 13m @ 1.7% Li₂O and 122ppm Ta₂O₅ from 61m				
							84	85	1	1.7	106
							103	107	4	1.5	187
							incl. 2m @ 2.5% Li₂O and 218ppm Ta₂O₅ from 104m				
							119	127	8	1.0	197
incl. 2m @ 2.0% Li₂O and 246ppm Ta₂O₅ from 123m											
KVRC0026	258564	6958396	535	-55	45	120	32	44	12	1.4	136
							incl. 8m @ 1.8% Li₂O and 147ppm Ta₂O₅ from 35m				
							58	61	3	1.2	93
							80	82	2	1.5	375
							incl. 1m @ 2.5% Li₂O and 398ppm Ta₂O₅ from 81m				
98	100	2	1	291							
KVRC0027	258535	6958367	534	-55	45	160	65	78	13	1.6	120
							incl. 6m @ 2% Li₂O and 112ppm Ta₂O₅ from 69m				
							93	97	4	1.5	161
							101	105	4	0.7	204
							129	135	6	0.8	107
KVRC0028	258504	6958477	525	-55	45	120	30	39	9	1.5	133
							incl. 5m @ 1.9% Li₂O and 133ppm Ta₂O₅ from 32m				
							51	56	5	1.7	80
KVRC0029	258472	6958448	525	-55	45	196	95	97	2	1.4	350
							75	85	10	1.8	170
							incl. 7m @ 2.2% Li₂O and 154ppm Ta₂O₅ from 77m				
							97	106	9	1.2	110
							incl. 3m @ 1.7% Li₂O and 89ppm Ta₂O₅ from 98m				
							125	133	8	1.4	251
							incl. 2m @ 2% Li₂O and 300ppm Ta₂O₅ from 126m				
							incl. 2m @ 1.8% Li₂O and 252ppm Ta₂O₅ from 129m				
							176	177	1	1.1	74
182	188	6	1.9	128							
incl. 4m @ 2.4% Li₂O and 135ppm Ta₂O₅ from 183m											
193	196	3	1	118							

Appendix 1 (cont.) – Kathleen Valley – Reverse Circulation Drill hole statistics

Hole_ID	East	North	RL	Dip	Azimuth	Depth (m)	Significant Li ₂ O (>0.4%) and Ta ₂ O ₅ (>50ppm) results				
							From(m)	To(m)	Interval(m)	Li ₂ O (%)	Ta ₂ O ₅ (ppm)
KVRC0030	258464	6958540	520	-55	45	140	16	25	9	1.6	118
							incl. 6m @ 2% Li₂O and 124ppm Ta₂O₅ from 18m				
							37	44	7	1.1	80
							incl. 3m @ 1.8% Li₂O and 123ppm Ta₂O₅ from 40m				
							99	103	4	0.9	331
							113	117	4	1.3	492
KVRC0031	258435	6958512	521	-55	45	160	52	61	9	1.7	126
							incl. 6m @ 2% Li₂O and 121ppm Ta₂O₅ from 54m				
							85	93	8	1.4	99
							incl. 4m @ 1.8% Li₂O and 113ppm Ta₂O₅ from 87m				
							106	110	4	2	312
							116	118	2	1.5	268
KVRC0032	258426	6959404	511	-55	45	100	39	44	5	1.6	124
							incl. 3m @ 2.1% Li₂O and 150ppm Ta₂O₅ from 40m				
							67	68	1	1.3	197
KVRC0033	258802	6959298	513	-55	45	140	6	9	3	0.9	223
							52	57	5	1.2	157
							incl. 2m @ 2.2% Li₂O and 167ppm Ta₂O₅ from 54m				
KVRC0034	258653	6959155	518	-55	45	120	114	118	4	1.2	152
							18	19	1	0.6	112
							21	24	3	1.5	156
							incl. 2m @ 1.9% Li₂O and 187ppm Ta₂O₅ from 22m				
							53	55	2	0.9	177
							60	64	4	1.4	160
							incl. 2m @ 2% Li₂O and 236ppm Ta₂O₅ from 61m				
							68	70	2	1.2	123
							78	95	17	1.4	161
							incl. 4m @ 2% Li₂O and 268ppm Ta₂O₅ from 79m				
							incl. 4m @ 2.3% Li₂O and 162ppm Ta₂O₅ from 90m				
							106	108	2	0.8	453
112	114	2	1.4	203							
incl. 1m @ 1.7% Li₂O and 195ppm Ta₂O₅ from 112m											
KVRC0035	258694	6959195	516	-55	45	120	37	40	3	1.1	252
							47	49	2	1.9	225
							52	54	2	1.2	201
							incl. 1m @ 1.9% Li₂O and 283ppm Ta₂O₅ from 53m				
							71	92	21	1.9	201
							incl. 17m @ 2.2% Li₂O and 220ppm Ta₂O₅ from 74m				
							101	103	2	0.9	273
108	110	2	1.3	94							
KVRC0036	258733	6959232	514	-55	45	140	14	17	3	1.1	247
							23	24	1	2.2	375
							54	56	2	1.6	164
							incl. 1m @ 2.2% Li₂O and 105ppm Ta₂O₅ from 55m				
							69	73	4	1.7	255
							incl. 2m @ 2.5% Li₂O and 328ppm Ta₂O₅ from 70m				
							76	77	1	0.8	107
							101	103	2	0.7	186
115	119	4	1	223							

Appendix 1 (cont.) – Kathleen Valley – Reverse Circulation Drill hole statistics

Hole_ID	East	North	RL	Dip	Azimuth	Depth (m)	Significant Li ₂ O (>0.4%) and Ta ₂ O ₅ (>50ppm) results				
							From(m)	To(m)	Interval(m)	Li ₂ O (%)	Ta ₂ O ₅ (ppm)
KVRC0037	258730	6959085	516	-55	45	120	15	19	4	1.1	303
							63	77	14	1.7	168
							incl. 2m @ 2.5% Li₂O and 103ppm Ta₂O₅ from 64m				
							incl. 7m @ 2.1% Li₂O and 214ppm Ta₂O₅ from 69m				
							83	87	4	1.3	107
							incl. 2m @ 2% Li₂O and 184ppm Ta₂O₅ from 85m				
KVRC0038	258774	6959131	514	-55	45	120	37	42	5	1	178
							incl. 2m @ 1.8% Li₂O and 198ppm Ta₂O₅ from 38m				
							58	64	6	0.7	129
							76	85	9	1.7	255
							incl. 4m @ 2.5% Li₂O and 292ppm Ta₂O₅ from 77m				
							100	102	2	0.6	233
KVRC0039	258803	6959163	513	-55	45	120	8	16	8	1.1	131
							incl. 3m @ 1.6% Li₂O and 173ppm Ta₂O₅ from 10m				
							45	49	4	1.3	204
							incl. 2m @ 1.7% Li₂O and 243ppm Ta₂O₅ from 46m				
							85	90	5	1.9	143
							incl. 3m @ 2.3% Li₂O and 138ppm Ta₂O₅ from 86m				
KVRC0040	258836	6959192	512	-55	45	140	37	39	2	0.7	191
							115	123	8	1.1	176
							incl. 2m @ 2.1% Li₂O and 157ppm Ta₂O₅ from 115m				
							126	127	1	1.6	206
KVRC0041	258398	6958475	524	-60	52	220	107	118	11	1.6	120
							incl. 6m @ 1.9% Li₂O and 123ppm Ta₂O₅ from 111m				
							149	159	10	0.8	139
							incl. 2m @ 1.8% Li₂O and 136ppm Ta₂O₅ from 156m				
							183	197	14	1.6	83
							incl. 6m @ 2.1% Li₂O and 100ppm Ta₂O₅ from 185m				
							and 2m @ 2.2% Li₂O and 113ppm Ta₂O₅ from 194m				
KVRC0041A*						280	222	229	7	0.9	95
KVRC0042	258373	6958534	519	-60	49	200	95	103	8	1.4	121
							incl. 4m @ 1.9% Li₂O and 124ppm Ta₂O₅ from 98m				
							120	130	10	1.1	119
							incl. 2m @ 1.6% Li₂O and 161ppm Ta₂O₅ from 124m				
							172	180	8	1.5	137
							incl. 4m @ 1.9% Li₂O and 138ppm Ta₂O₅ from 173m				
KVRC0042A*						270	231	246	15	1.4	122
	incl. 4m @ 2.2% Li₂O and 114ppm Ta₂O₅ from 232m										
	and 3m @ 1.7% Li₂O and 131ppm Ta₂O₅ from 238m										
KVRC0043	258815	6959306	512	-55	53	120	and 1m @ 1.9% Li₂O and 114ppm Ta₂O₅ from 243m				
							34	37	3	1.5	215
							83	84	1	1.1	906
KVRC0044	258605	6959116	519	-54	40	150	43	47	4	1.5	129
							incl. 3m @ 1.8% Li₂O and 155ppm Ta₂O₅ from 44m				
							65	80	15	1.1	204
							incl. 1m @ 2.4% Li₂O and 287ppm Ta₂O₅ from 72m				
							incl. 2m @ 2.4% Li₂O and 250ppm Ta₂O₅ from 76m				
							102	109	7	1.6	225
							incl. 5m @ 1.9% Li₂O and 238ppm Ta₂O₅ from 102m				
							114	116	2	0.9	118
							122	124	2	1.2	273
							127	131	4	1	172
							incl. 1m @ 2% Li₂O and 181ppm Ta₂O₅ from 128m				
138	140	2	1.5	266							

Appendix 1 (cont.) – Kathleen Valley – Reverse Circulation Drill hole statistics

Hole_ID	East	North	RL	Dip	Azimuth	Depth (m)	Significant Li2O (>0.4%) and Ta2O5 (>50ppm) results				
							From(m)	To(m)	Interval(m)	Li2O (%)	Ta2O5 (ppm)
KVRC0045	258571	6959089	521	-59	38	150	65	69	4	1.6	149
							incl. 3m @ 1.9% Li2O and 173ppm Ta2O5 from 65m				
							84	94	10	1.6	287
							incl. 5m @ 2.3% Li2O and 317ppm Ta2O5 from 85m				
							114	133	19	1.1	131
							incl. 2m @ 2.1% Li2O and 236ppm Ta2O5 from 116m and 2m @ 2.4% Li2O and 98ppm Ta2O5 from 130m				
KVRC0046	258887	6959230	512	-54	48	93	28	31	3	1.7	191
							incl. 1m @ 2.5% Li2O and 190ppm Ta2O5 from 29m				
KVRC0047	258688	6959048	520	-56	46	200	34	36	2	0.9	307
							76	85	9	1.5	206
							incl. 3m @ 2% Li2O and 128ppm Ta2O5 from 77m and 1m @ 2.3% Li2O and 234ppm Ta2O5 from 83m				
							88	90	2	1.3	260
							100	102	2	2.5	173
							132	136	4	1.2	180
incl. 1m @ 2% Li2O and 314ppm Ta2O5 from 133m											
KVRC0048	258645	6959011	522	-55	47	120	45	48	3	1.5	214
							85	99	14	1.6	236
							incl. 9m @ 2% Li2O and 230ppm Ta2O5 from 87m				
KVRC0049	258957	6959148	513	-57	47	120	109	113	4	1.4	200
							incl. 1m @ 2.1% Li2O and 176ppm Ta2O5 from 109m and 1m @ 1.7% Li2O and 183ppm Ta2O5 from 111m				
KVRC0050	258904	6959102	514	-56	49	120	5	7	2	1.1	84
							31	34	3	1	135
							100	108	8	1	123
							incl. 2m @ 2.1% Li2O and 146ppm Ta2O5 from 100m				
KVRC0051	258855	6959056	516	-57	51	121	13	17	4	0.9	114
							incl. 1m @ 1.7% Li2O and 159ppm Ta2O5 from 14m				
							21	23	2	1.6	130
							incl. 1m @ 2% Li2O and 179ppm Ta2O5 from 21m				
							28	30	2	1.7	161
							48	52	4	1.6	131
							incl. 2m @ 2.2% Li2O and 145ppm Ta2O5 from 48m				
108	114	6	0.8	153							
incl. 1m @ 2.2% Li2O and 238ppm Ta2O5 from 111m											
KVRC0052	258807	6959015	515	-55	48	120	80	86	6	1.5	162
							incl. 3m @ 2.2% Li2O and 160ppm Ta2O5 from 81m				
KVRC0053	258757	6958966	519	-56	49	120	68	73	5	1.6	183
							incl. 1m @ 2% Li2O and 233ppm Ta2O5 from 72m				
							78	80	2	1	226
							106	115	9	1.7	126
incl. 6m @ 2.2% Li2O and 132ppm Ta2O5 from 108m											
KVRC0054	258717	6958930	522	-57	52	160	27	30	3	0.9	263
							71	87	16	1.6	185
							incl. 2m @ 2.4% Li2O and 241ppm Ta2O5 from 74m and 3m @ 2% Li2O and 260ppm Ta2O5 from 78m				
							139	144	5	1	139
							incl. 1m @ 2% Li2O and 167ppm Ta2O5 from 142m				

Appendix 1 (cont.) – Kathleen Valley – Reverse Circulation Drill hole statistics

Hole_ID	East	North	RL	Dip	Azimuth	Depth (m)	Significant Li ₂ O (>0.4%) and Ta ₂ O ₅ (>50ppm) results				
							From(m)	To(m)	Interval(m)	Li ₂ O (%)	Ta ₂ O ₅ (ppm)
KVRC0055						100	52	60	8	0.9	110
KVRC0055A	258374	6959379	510	-55	47	348	108	110	2	1.3	175
							incl. 1m @ 1.6% Li₂O and 166ppm Ta₂O₅ from 108m				
							157	162	5	1.6	174
							incl. 1m @ 1.9% Li₂O and 201ppm Ta₂O₅ from 159m and 1m @ 2% Li₂O and 160ppm Ta₂O₅ from 161m				
							187	189	2	0.9	214
							204	223	19	1.4	188
							incl. 5m @ 2.2% Li₂O and 195ppm Ta₂O₅ from 204m and 2m @ 1.8% Li₂O and 181ppm Ta₂O₅ from 210m				
							234	235	1	1.3	138
							234	235	1	1.3	138
KVRC0056						88	52	58	6	1.3	93
KVRC0056A	258318	6959435	510	-55	49	300	incl. 2m @ 1.9% Li₂O and 93ppm Ta₂O₅ from 53m				
							112	114	2	0.5	64
							120	125	5	0.7	96
							incl. 1m @ 1.6% Li₂O and 137ppm Ta₂O₅ from 121m				
							154	158	4	0.9	117
							incl. 1m @ 1.5% Li₂O and 134ppm Ta₂O₅ from 155m				
							186	218	32	1.1	129
							incl. 4m @ 1.9% Li₂O and 161ppm Ta₂O₅ from 198m and 7m @ 1.7% Li₂O and 186ppm Ta₂O₅ from 208m				
							230	231	1	1.1	144
KVRC0057	258360	6959477	511	-56	49	50	28	32	4	0.6	126
KVRC0058	258274	6959395	509	-56	48	120	70	77	7	1.4	130
							incl. 3m @ 1.9% Li₂O and 189ppm Ta₂O₅ from 72m				
KVRC0059	258254	6959520	511	-57	47	80	43	50	7	1.4	156
							incl. 1m @ 2.6% Li₂O and 305ppm Ta₂O₅ from 47m				
KVRC0060						80	No significant assays				
KVRC0060A	258298	6959565	510	-56	50	390	252	260	8	1.7	125
							incl. 4m @ 2.1% Li₂O and 110ppm Ta₂O₅ from 253m and 1m @ 2.1% Li₂O and 154ppm Ta₂O₅ from 258m				
							317	334	17	1.2	114
							incl. 2m @ 1.9% Li₂O and 105ppm Ta₂O₅ from 323m				
							75	82	7	1.5	134
KVRC0061	258194	6959467	507	-56	47	124	incl. 3m @ 1.9% Li₂O and 114ppm Ta₂O₅ from 76m				
KVRC0062	258563	6958526	520	-60	49	180	48	51	3	1	492
							incl. 1m @ 1.7% Li₂O and 336ppm Ta₂O₅ from 48m				
							94	99	5	1.1	143
							incl. 2m @ 2% Li₂O and 288ppm Ta₂O₅ from 94m				
							105	108	3	1.2	142
							incl. 1m @ 1.7% Li₂O and 171ppm Ta₂O₅ from 106m				
							118	119	1	1.1	333
							125	128	3	0.6	83
137	146	9	1	135							
KVRC0062A						250	No significant assays				
KVRC0062X	258555	6958525	520	-60	49	64	Hole abandoned				
KVRC0063	258833	6958178	523	-61	46	105	No significant assays				
KVRC0064	258805	6958151	521	-60	44	100					
KVRC0065	258780	6958123	524	-60	43	100					
KVRC0066	258754	6958091	524	-65	46	101					

Appendix 1 (cont.) – Kathleen Valley – Reverse Circulation Drill hole statistics

Hole_ID	East	North	RL	Dip	Azimuth	Depth (m)	Significant Li2O (>0.4%) and Ta2O5 (>50ppm) results				
							From(m)	To(m)	Interval(m)	Li2O (%)	Ta2O5 (ppm)
KVRC0067	258449	6958419	524	-61	47	238	117	121	4	0.8	152
							123	129	6	1.2	184
							incl. 2m @ 1.6% Li2O and 133ppm Ta2O5 from 127m				
							144	157	13	1.3	125
							incl. 4m @ 2% Li2O and 137ppm Ta2O5 from 147m and 1m @ 2% Li2O and 100ppm Ta2O5 from 153m				
							184	195	11	1.4	72
							incl. 4m @ 2.2% Li2O and 84ppm Ta2O5 from 188m				
							199	201	2	0.8	93
							203	212	9	1.2	77
							incl. 2m @ 1.7% Li2O and 138ppm Ta2O5 from 210m				
KVRC0067A*					288	274	277	3	1.2	57	
incl. 2m @ 1.7% Li2O and 77ppm Ta2O5 from 275m											
KVRC0068	258779	6958265	525	-59	46	100	72	78	6	NSR	129
KVRC0069	258689	6958169	529	-66	43	130	69	78	9	1.5	178
							incl. 4m @ 1.8% Li2O and 171ppm Ta2O5 from 71m				
							83	94	11	1.2	184
							incl. 2m @ 2.2% Li2O and 249ppm Ta2O5 from 83m				
KVRC0070	258387	6958609	518	-59	55	80	96	100	4	0.6	110
							0	4	4	1.6	124
							39	42	3	1.5	118
							55	61	6	1.3	119
incl. 2m @ 1.8% Li2O and 109ppm Ta2O5 from 57m											
KVRC0071	258665	6958290	538	-61	47	100	31	46	15	1.6	129
							incl. 6m @ 2% Li2O and 116ppm Ta2O5 from 35m and 3m @ 1.7% Li2O and 146ppm Ta2O5 from 42m				
KVRC0072	258407	6958564	519	-60	49	180	46	56	10	1.5	81
							incl. 5m @ 2% Li2O and 86ppm Ta2O5 from 48m				
							64	66	2	1.5	92
							97	98	1	1.5	259
							106	107	1	1.3	994
							125	128	3	1.3	146
							incl. 1m @ 2.3% Li2O and 164ppm Ta2O5 from 126m				
							161	169	8	1.8	130
incl. 6m @ 2.1% Li2O and 143ppm Ta2O5 from 162m											
KVRC0073	258635	6958263	541	-65	45	140	72	90	18	1.4	145
							incl. 4m @ 1.9% Li2O and 153ppm Ta2O5 from 75m and 5m @ 1.9% Li2O and 155ppm Ta2O5 from 83m				
							104	118	14	1.3	176
							incl. 5m @ 2% Li2O and 189ppm Ta2O5 from 104m and 2m @ 2% Li2O and 226ppm Ta2O5 from 111m				
KVRC0074	258354	6958569	518	-65	45	140	88	99	11	1.4	97
							incl. 1m @ 1.9% Li2O and 96ppm Ta2O5 from 88m and 6m @ 1.8% Li2O and 107ppm Ta2O5 from 91m				
							112	119	7	1.8	150
							incl. 5m @ 2.2% Li2O and 143ppm Ta2O5 from 114m				
KVRC0075	258686	6958371	539	-65	47	100	79	87	8	1	228
							incl. 1m @ 1.8% Li2O and 344ppm Ta2O5 from 81m and 1m @ 1.6% Li2O and 149ppm Ta2O5 from 86m				

Appendix 1 (cont.) – Kathleen Valley – Reverse Circulation Drill hole statistics

Hole_ID	East	North	RL	Dip	Azimuth	Depth (m)	Significant Li2O (>0.4%) and Ta2O5 (>50ppm) results				
							From(m)	To(m)	Interval(m)	Li2O (%)	Ta2O5 (ppm)
KVRC0076	258450	6958610	518	-65	45	130	89	90	1	1.8	147
							98	105	7	1.6	281
							incl. 3m @ 2.4% Li2O and 252ppm Ta2O5 from 99m				
KVRC0076A*						190	173	177	1	0.6	123
KVRC0076B*						252	219	223	4	1.2	101
							incl. 2m @ 1.8% Li2O and 82ppm Ta2O5 from 220m				
KVRC0077	258573	6958267	545	-65	44	180	109	137	28	1.4	108
							incl. 14m @ 2.2% Li2O and 147ppm Ta2O5 from 109m				
							149	152	3	1.1	103
							incl. 1m @ 2.1% Li2O and 115ppm Ta2O5 from 150m				
							169	171	2	1	169
KVRC0078	258595	6959106	520	-69	230	190	73	91	18	1.5	207
							incl. 6m @ 2.3% Li2O and 214ppm Ta2O5 from 80m and 1m @ 2.6% Li2O and 186ppm Ta2O5 from 89m				
							114	120	6	2.1	171
							incl. 5m @ 2.4% Li2O and 172ppm Ta2O5 from 114m				
							127	147	20	1.5	147
							incl. 11m @ 2% Li2O and 134ppm Ta2O5 from 134m				
						178	181	3	1.8	134	
							incl. 2m @ 2.1% Li2O and 137ppm Ta2O5 from 178m				
KVRC0079	258535	6958448	530	-65	45	120	24	36	12	1.9	132
							incl. 7m @ 2.3% Li2O and 135ppm Ta2O5 from 29m				
							55	62	7	1.5	96
							75	76	1	2.8	47
						103	104	1	0.9	132	
KVRC0080	258632	6958999	524	-65	225	120	40	41	1	1.5	213
							75	90	15	1.5	204
							incl. 4m @ 2.2% Li2O and 281ppm Ta2O5 from 76m and 3m @ 2% Li2O and 148ppm Ta2O5 from 86m				
KVRC0080A						210	133	135	2	1.4	116
	incl. 1m @ 1.9% Li2O and 111ppm Ta2O5 from 134m										
	143	145	2	2.1	250						
							incl. 1m @ 3% Li2O and 313ppm Ta2O5 from 144m				
							153	156	3	1.7	140
							incl. 1m @ 2.6% Li2O and 159ppm Ta2O5 from 154m				
KVRC0081	258503	6958408	529	-65	45	125	88	103	15	1.9	162
							incl. 10m @ 2.1% Li2O and 175ppm Ta2O5 from 92m				
							121	125	4	1.4	161
							incl. 1m @ 1.9% Li2O and 162ppm Ta2O5 from 123m				
KVRC0082	258477	6958503	523	-60	50	100	41	50	9	1.8	150
							incl. 7m @ 2.1% Li2O and 133ppm Ta2O5 from 42m				
							58	63	5	1.4	110
							incl. 3m @ 1.7% Li2O and 105ppm Ta2O5 from 58m				
KVRC0083	258714	6958927	522	-65	227	136	13	14	1	1	325
							28	29	1	0.9	298
							94	106	12	1.9	202
							incl. 7m @ 2.5% Li2O and 209ppm Ta2O5 from 95m				
							116	117	1	0.6	132
							120	127	7	2	91
							incl. 2m @ 2.7% Li2O and 92ppm Ta2O5 from 121m and 3m @ 2.2% Li2O and 96ppm Ta2O5 from 124m				
KVRC0083A						200	160	162	2	1.1	104
	incl. 1m @ 1.7% Li2O and 127ppm Ta2O5 from 160m										
							189	191	2	1.2	98

Appendix 1 (cont.) – Kathleen Valley – Reverse Circulation Drill hole statistics

Hole_ID	East	North	RL	Dip	Azimuth	Depth (m)	Significant Li2O (>0.4%) and Ta2O5 (>50ppm) results											
							From(m)	To(m)	Interval(m)	Li2O (%)	Ta2O5 (ppm)							
KVRC0084	258451	6958481	522	-64	47	130	71	80	9	1.1	115							
							incl. 2m @ 2.2% Li2O and 132ppm Ta2O5 from 75m											
							98	105	7	1.1	156							
							110	116	6	1.3	194							
							incl. 3m @ 2.2% Li2O and 263ppm Ta2O5 from 111m											
KVRC0085	258225	6959344	508	-70	49	120	94	100	6	1.4	127							
							incl. 1m @ 1.8% Li2O and 110ppm Ta2O5 from 95m and 1m @ 1.7% Li2O and 121ppm Ta2O5 from 97m											
KVRC0085A	258225	6959344	508	-70	49	376	190	220	30	1.8	157							
							incl. 12m @ 2% Li2O and 157ppm Ta2O5 from 191m and 2m @ 2.1% Li2O and 211ppm Ta2O5 from 217m											
							227	231	4	1.1	157							
					376	incl. 1m @ 1.9% Li2O and 235ppm Ta2O5 from 229m												
KVRC0086	258153	6959419	509	-70		49	120	92	100	8	1.2	128						
								incl. 3m @ 1.7% Li2O and 153ppm Ta2O5 from 93m										
					215			246	31	1.8	182							
					incl. 10m @ 2% Li2O and 129ppm Ta2O5 from 216m and 6m @ 2.3% Li2O and 198ppm Ta2O5 from 230m and 3m @ 2.1% Li2O and 305ppm Ta2O5 from 242m													
					252			254	2	1.1	128							
					318	incl. 1m @ 1.62% Li2O and 155ppm Ta2O5 from 252m												
KVRC0087	258320	6958621	513	-49		50	112	29	34	5	1.4	99						
								incl. 2m @ 2% Li2O and 114ppm Ta2O5 from 30m										
					68			71	3	1.3	84							
					incl. 1m @ 2.2% Li2O and 96ppm Ta2O5 from 69m													
					78			84	6	1.2	65							
					incl. 3m @ 1.9% Li2O and 98ppm Ta2O5 from 81m													
					88			92	4	1.7	121							
					incl. 2m @ 2.1% Li2O and 118ppm Ta2O5 from 89m													
					KVRC0087A*			258320	6958621	513	-49	50	112	135	139	4	0.6	193
														220	172	176	4	2
incl. 2m @ 2.8% Li2O and 94ppm Ta2O5 from 173m																		
KVRC0088	258302	6958603	514	-60	49	148	91	94	3	1.6	83							
							incl. 2m @ 1.9% Li2O and 85ppm Ta2O5 from 92m											
							100	106	6	1.4	82							
							incl. 2m @ 2% Li2O and 75ppm Ta2O5 from 102m											
							136	142	6	1.6	139							
					208	incl. 3m @ 2% Li2O and 151ppm Ta2O5 from 138m												
KVRC0088A*	258302	6958603	514	-60		49	162	169	7	1.6	161							
							incl. 3m @ 2.5% Li2O and 153ppm Ta2O5 from 164m											
KVRC0088B*	258302	6958603	514	-60	49	208	201	202	1	0.9	166							
												264	210	236	26	1.3	115	
							incl. 1m @ 1.7% Li2O and 217ppm Ta2O5 from 211m and 10m @ 1.9% Li2O and 127ppm Ta2O5 from 220m and 2m @ 1.8% Li2O and 144ppm Ta2O5 from 233m											
KVRC0089	258593	6958356	542	-60	46	118	29	40	11	1.6	127							
							incl. 5m @ 1.9% Li2O and 122ppm Ta2O5 from 32m											
KVRC0090	258766	6958178	525	-59	46	70	97	98	1	1.1	150							
KVRC0091	258738	6958153	525	-59	46	90	18	21	3	0.1	228							
KVRC0092	258978	6959117	513	-55	47	130	34	37	3	1.3	126							
												130	14	16	2	1.2	110	
							incl. 1m @ 1.8% Li2O and 159ppm Ta2O5 from 14m											
												130	117	122	5	1.6	161	
incl. 3m @ 2.1% Li2O and 204ppm Ta2O5 from 118m																		

Appendix 1 (cont.) – Kathleen Valley – Reverse Circulation Drill hole statistics

Hole_ID	East	North	RL	Dip	Azimuth	Depth (m)	Significant Li2O (>0.4%) and Ta2O5 (>50ppm) results										
							From(m)	To(m)	Interval(m)	Li2O (%)	Ta2O5 (ppm)						
KVRC0093	258935	6959074	514	-55	46	132	23	26	3	1.5	173						
							incl. 1m @ 2% Li2O and 128ppm Ta2O5 from 24m										
							93	94	1	1.1	118						
							117	119	2	1	96						
KVRC0094	258893	6959032	515	-55	49	126	1	5	4	1.6	149						
							incl. 1m @ 1.8% Li2O and 121ppm Ta2O5 from 1m										
							42	49	7	1	66						
							incl. 1m @ 2.8% Li2O and 89ppm Ta2O5 from 47m										
							102	103	1	1	120						
							112	117	5	1.4	161						
KVRC0095	258852	6958991	516	-54	43	120	incl. 2m @ 2.1% Li2O and 169ppm Ta2O5 from 114m										
							39	43	4	1.5	130						
							incl. 3m @ 1.8% Li2O and 130ppm Ta2O5 from 40m										
							61	65	4	1.6	135						
							incl. 3m @ 1.8% Li2O and 132ppm Ta2O5 from 62m										
							73	75	2	1	78						
KVRC0096	258806	6958949	517	-55	47	120	103	110	7	0	229						
							14	20	6	0	230						
							56	66	10	0	191						
							82	86	4	1.1	136						
							incl. 1m @ 1.7% Li2O and 178ppm Ta2O5 from 83m										
KVRC0097	258763	6958905	518	-56	46	138	90	98	8	0	122						
							78	85	7	1.2	247						
							incl. 1m @ 1.9% Li2O and 182ppm Ta2O5 from 80m and 1m @ 2.4% Li2O and 129ppm Ta2O5 from 84m										
							92	94	2	1	149						
							103	105	2	1.1	79						
							121	123	2	1.9	112						
							13	16	3	1.4	171						
KVRC0098	258721	6958858	519	-55	48	168	incl. 1m @ 1.9% Li2O and 104ppm Ta2O5 from 13m										
							89	96	7	1.3	219						
							incl. 3m @ 1.7% Li2O and 213ppm Ta2O5 from 90m and 1m @ 1.9% Li2O and 125ppm Ta2O5 from 95m										
							110	111	1	1.2	73						
							113	116	3	1	76						
							161	165	4	1.4	103						
							incl. 2m @ 1.7% Li2O and 92ppm Ta2O5 from 163m										
							21	27	6	1.1	282						
KVRC0099	258720	6958856	519	-66	227	150	incl. 2m @ 2.2% Li2O and 319ppm Ta2O5 from 24m										
							89	95	6	2.1	252						
							incl. 5m @ 2.2% Li2O and 233ppm Ta2O5 from 89m										
							112	114	2	1.5	266						
							incl. 1m @ 1.9% Li2O and 256ppm Ta2O5 from 112m										
							131	139	8	1.9	119						
							incl. 3m @ 2.5% Li2O and 121ppm Ta2O5 from 131m and 2m @ 2.3% Li2O and 133ppm Ta2O5 from 135m and 1m @ 2.3% Li2O and 139ppm Ta2O5 from 138m										
							KVRC0099A					230	192	193	1	0.5	116
							KVRC0100	258677	6959246	509	-56	50	144	25	27	2	1.4
35	37	2	1	175													
78	98	21	1.1	146													
incl. 6m @ 1.7% Li2O and 147ppm Ta2O5 from 78m and 4m @ 1.9% Li2O and 317ppm Ta2O5 from 93m and 1m @ 1.7% Li2O and 272ppm Ta2O5 from 115m																	

Appendix 1 (cont.) – Kathleen Valley – Reverse Circulation Drill hole statistics

Hole_ID	East	North	RL	Dip	Azimuth	Depth (m)	Significant Li2O (>0.4%) and Ta2O5 (>50ppm) results				
							From(m)	To(m)	Interval(m)	Li2O (%)	Ta2O5 (ppm)
KVRC0101	258636	6959202	510	-57	47	126	6	11	5	1.6	105
							incl. 3m @ 2.1% Li2O and 101ppm Ta2O5 from 7m				
							56	61	5	0.9	141
							incl. 2m @ 1.6% Li2O and 260ppm Ta2O5 from 58m				
							66	68	2	1.5	174
							incl. 1m @ 1.7% Li2O and 142ppm Ta2O5 from 66m				
							81	89	8	1.5	263
							incl. 3m @ 1.9% Li2O and 257ppm Ta2O5 from 82m and 2m @ 1.8% Li2O and 243ppm Ta2O5 from 86m				
							94	108	14	1	97
							incl. 1m @ 2.1% Li2O and 54ppm Ta2O5 from 97m and 2m @ 2% Li2O and 167ppm Ta2O5 from 106m				
KVRC0102	258599	6959167	513	-59	46	120	26	33	7	1.2	116
							incl. 2m @ 2.4% Li2O and 120ppm Ta2O5 from 29m				
							70	78	8	1.8	197
							incl. 6m @ 2.1% Li2O and 197ppm Ta2O5 from 71m				
							86	98	12	1.1	141
							incl. 3m @ 2.3% Li2O and 312ppm Ta2O5 from 92m				
							104	105	1	1.2	263
112	117	5	1.3	211							
KVRC0103	258548	6959116	520	-55	47	144	64	70	6	1.3	126
							incl. 1m @ 1.7% Li2O and 65ppm Ta2O5 from 64m and 1m @ 1.6% Li2O and 190ppm Ta2O5 from 67m				
							91	100	9	1.9	262
							incl. 2m @ 2.4% Li2O and 199ppm Ta2O5 from 92m and 5m @ 2.2% Li2O and 313ppm Ta2O5 from 95m				
							117	125	8	1.3	168
							incl. 4m @ 1.8% Li2O and 240ppm Ta2O5 from 118m				
							128	130	2	1	197
							135	138	3	1.8	111
							141	143	2	0.9	171
							KVRC0103A				
KVRC0104	258544	6959111	520	-68	225	178	81	83	2	1.5	187
							incl. 1m @ 1.7% Li2O and 120ppm Ta2O5 from 81m				
							92	105	13	1.6	251
							incl. 4m @ 2.1% Li2O and 213ppm Ta2O5 from 92m and 3m @ 2.2% Li2O and 282ppm Ta2O5 from 98m				
							121	125	4	1.5	163
							incl. 1m @ 2.3% Li2O and 170ppm Ta2O5 from 122m and 1m @ 2% Li2O and 149ppm Ta2O5 from 124m				
							136	139	3	1.5	191
							incl. 1m @ 1.7% Li2O and 164ppm Ta2O5 from 138m				
							148	161	13	1.9	165
							incl. 3m @ 2.2% Li2O and 182ppm Ta2O5 from 148m and 8m @ 2% Li2O and 164ppm Ta2O5 from 152m				
KVRC0105	258868	6959291	517	-59	50	112	28	29	1	0.5	18
KVRC0106	258821	6959242	518	-60	49	160	4	5	1	0.5	107
							8	9	1	0.5	115
							35	38	3	1.5	247
							incl. 2m @ 1.9% Li2O and 261ppm Ta2O5 from 36m				
						109	111	2	1.1	172	

Appendix 1 (cont.) – Kathleen Valley – Reverse Circulation Drill hole statistics

Hole_ID	East	North	RL	Dip	Azimuth	Depth (m)	Significant Li2O (>0.4%) and Ta2O5 (>50ppm) results											
							From(m)	To(m)	Interval(m)	Li2O (%)	Ta2O5 (ppm)							
KVRC0107	258774	6959200	519	-60	46	124	7	9	2	1	253							
							21	24	3	1.1	203							
							incl. 1m @ 2% Li2O and 286ppm Ta2O5 from 22m											
							48	49	1	0.8	189							
							52	54	2	1.2	256							
							incl. 1m @ 1.8% Li2O and 303ppm Ta2O5 from 52m											
							59	60	1	1.1	181							
							73	75	2	0.5	103							
							90	95	5	0.9	156							
KVRC0108	258739	6959165	519	-59	42	124	26	27	1	1	248							
							40	46	6	1.4	233							
							incl. 3m @ 1.7% Li2O and 301ppm Ta2O5 from 41m											
							63	70	7	1.1	138							
							incl. 2m @ 2% Li2O and 233ppm Ta2O5 from 68m											
							80	88	8	1	120							
							incl. 1m @ 2.6% Li2O and 160ppm Ta2O5 from 86m											
							110	112	2	1.2	230							
							17	18	1	1.4	254							
KVRC0109	258696	6959120	520	-54	48	124	20	22	2	1.5	77							
							incl. 1m @ 2.4% Li2O and 115ppm Ta2O5 from 20m											
							62	77	15	1.5	191							
							incl. 10m @ 2% Li2O and 258ppm Ta2O5 from 67m											
							85	90	5	1.4	161							
							incl. 1m @ 2% Li2O and 216ppm Ta2O5 from 89m											
							97	98	1	1	126							
							44	46	2	1.4	159							
							incl. 1m @ 2% Li2O and 125ppm Ta2O5 from 45m											
KVRC0110	258655	6959076	523	-56	47	124	75	87	12	1.6	205							
							incl. 8m @ 2% Li2O and 206ppm Ta2O5 from 77m											
							91	92	1	1.1	162							
							100	108	8	1.5	129							
							incl. 2m @ 2.2% Li2O and 134ppm Ta2O5 from 105m											
							KVRC0111	258609	6959034	523	-55	46	130	61	64	3	1.1	260
														93	84	1	1.6	247
														86	99	13	1.2	205
													incl. 5m @ 1.9% Li2O and 292ppm Ta2O5 from 89m					
KVRC0111A						190							114	117	3	0.4	22	
													133	146	13	1.7	112	
incl. 9m @ 2.1% Li2O and 133ppm Ta2O5 from 134m																		
KVRC0112	258608	6959031	523	-69	227	154	75	89	14	1.5	202							
							incl. 3m @ 2.1% Li2O and 310ppm Ta2O5 from 78m and 3m @ 2.2% Li2O and 157ppm Ta2O5 from 84m											
							126	136	10	1.9	93							
							incl. 7m @ 2.2% Li2O and 97ppm Ta2O5 from 128m											
							141	142	1	1.7	250							
							146	150	4	1.5	148							
						incl. 1m @ 2.8% Li2O and 123ppm Ta2O5 from 123m												
						KVRC0112A						190	155	156	1	1.1	2	
													161	164	3	1.1	131	
incl. 1m @ 2.3% Li2O and 179ppm Ta2O5 from 162m																		
KVRC0113	258928	6959208	508	-54	45	124	22	24	2	2.7	182							
							incl. 1m @ 4.2% Li2O and 156ppm Ta2O5 from 22m											
KVRC0114	258885	6959166	514	-55	45	130	33	36	3	0.1	329							
							114	119	5	0.1	146							

Appendix 1 (cont.) – Kathleen Valley – Reverse Circulation Drill hole statistics

Hole_ID	East	North	RL	Dip	Azimuth	Depth (m)	Significant Li2O (>0.4%) and Ta2O5 (>50ppm) results				
							From(m)	To(m)	Interval(m)	Li2O (%)	Ta2O5 (ppm)
KVRC0115	258845	6959125	501	-54	46	130	0	6	6	0.6	154
							24	25	1	1.1	204
							37	41	4	1.4	163
							incl. 2m @ 1.9% Li2O and 200ppm Ta2O5 from 38m				
							114	117	3	2	188
							incl. 2m @ 2.4% Li2O and 196ppm Ta2O5 from 114m				
KVRC0116	258800	6959080	504	-55	50	140	41	48	7	1.2	223
							incl. 3m @ 1.7% Li2O and 245ppm Ta2O5 from 43m				
							53	59	6	1	131
							incl. 1m @ 1.9% Li2O and 210ppm Ta2O5 from 53m				
							80	85	5	1.3	214
							incl. 2m @ 2.2% Li2O and 219ppm Ta2O5 from 81m				
KVRC0117	258755	6959038	519	-54	47	140	128	130	2	0.6	111
							0	5	5	0.9	179
							73	91	18	1.6	212
							incl. 2m @ 2.1% Li2O and 180ppm Ta2O5 from 74m and 1m @ 2.4% Li2O and 231ppm Ta2O5 from 80m and 8m @ 2% Li2O and 213ppm Ta2O5 from 82m				
							104	107	3	0.9	134
							incl. 1m @ 2.5% Li2O and 201ppm Ta2O5 from 84m and 2m @ 2.1% Li2O and 253ppm Ta2O5 from 89m and 1m @ 1.9% Li2O and 163ppm Ta2O5 from 96m				
KVRC0118	258710	6958997	520	-55	49	172	22	24	2	0.9	297
							83	97	14	1.2	217
							incl. 3m @ 1.9% Li2O and 157ppm Ta2O5 from 128m				
							incl. 1m @ 1.7% Li2O and 309ppm Ta2O5 from 33m				
							128	134	6	1.4	178
							incl. 1m @ 1.7% Li2O and 225ppm Ta2O5 from 99m				
KVRC0119	258671	6958948	522	-53	48	142	85	100	15	1.1	197
							incl. 1m @ 2.2% Li2O and 408ppm Ta2O5 from 88m and 5m @ 1.6% Li2O and 133ppm Ta2O5 from 94m				
							incl. 2m @ 1.8% Li2O and 140ppm Ta2O5 from 115m				
KVRC0120	258668	6958944	523	-53	228	140	128	131	3	1.1	270
							56	58	2	1.6	323
							98	119	21	1.5	197
							incl. 1m @ 1.9% Li2O and 227ppm Ta2O5 from 129m				
							incl. 3m @ 2.3% Li2O and 243ppm Ta2O5 from 99m and 5m @ 2.8% Li2O and 238ppm Ta2O5 from 105m and 1m @ 1.7% Li2O and 377ppm Ta2O5 from 114m and 1m @ 1.9% Li2O and 361ppm Ta2O5 from 117m				
							incl. 1m @ 1.9% Li2O and 227ppm Ta2O5 from 129m				
KVRC0121	258556	6959190	513	-56	47	142	134	135	1	2.3	193
							28	35	7	0.6	109
							incl. 1m @ 1.7% Li2O and 309ppm Ta2O5 from 33m				
							96	103	7	0.8	172
							incl. 1m @ 1.7% Li2O and 225ppm Ta2O5 from 99m				
							114	123	9	0.9	111
							incl. 2m @ 1.8% Li2O and 140ppm Ta2O5 from 115m				
KVRC0122	258514	6959152	521	-56	45	148	126	138	12	1.3	122
							incl. 1m @ 1.9% Li2O and 227ppm Ta2O5 from 129m				
							99	121	22	1.5	218
							incl. 6m @ 2.5% Li2O and 254ppm Ta2O5 from 100m and 5m @ 1.7% Li2O and 292ppm Ta2O5 from 126m				
							51	53	2	1.2	176
							67	71	4	1.1	157
incl. 5m @ 1.9% Li2O and 128ppm Ta2O5 from 127m											

Appendix 1 (cont.) – Kathleen Valley – Reverse Circulation Drill hole statistics

Hole_ID	East	North	RL	Dip	Azimuth	Depth (m)	Significant Li ₂ O (>0.4%) and Ta ₂ O ₅ (>50ppm) results				
							From(m)	To(m)	Interval(m)	Li ₂ O (%)	Ta ₂ O ₅ (ppm)
KVRC0123	258510	6959142	521	-84	53	160	52	54	2	1	182
							66	68	2	1.4	291
							incl. 1m @ 2% Li₂O and 296ppm Ta₂O₅ from 66m				
							82	94	12	1.7	223
							incl. 5m @ 2.5% Li₂O and 279ppm Ta₂O₅ from 87m				
							102	106	4	1	169
							113	125	12	1.8	161
							incl. 2m @ 1.8% Li₂O and 212ppm Ta₂O₅ from 113m and 6m @ 2.5% Li₂O and 189ppm Ta₂O₅ from 118m				
							141	153	12	0.9	131
							incl. 4m @ 1.8% Li₂O and 210ppm Ta₂O₅ from 148m				
KVRC0124	258502	6959142	521	-59	228	172	79	80	1	1.4	183
							93	109	16	1.4	196
							incl. 4m @ 1.9% Li₂O and 183ppm Ta₂O₅ from 93m and 6m @ 2.1% Li₂O and 204ppm Ta₂O₅ from 100m				
							134	140	6	1.3	120
							incl. 2m @ 2% Li₂O and 174ppm Ta₂O₅ from 136m				
							147	150	3	1.1	279
							incl. 1m @ 1.7% Li₂O and 358ppm Ta₂O₅ from 147m				
							154	163	9	1.4	135
							incl. 2m @ 2.6% Li₂O and 157ppm Ta₂O₅ from 154m and 1m @ 2% Li₂O and 133ppm Ta₂O₅ from 158m				
							166	169	3	1.3	139
incl. 1m @ 2.1% Li₂O and 173ppm Ta₂O₅ from 167m											
KVRC0125	258636	6959000	523	-84	44	120	74	84	10	1.4	239
							incl. 6m @ 2% Li₂O and 200ppm Ta₂O₅ from 74m				
KVRC0125A						180	97	99	2	0.6	144
							122	129	7	1.4	151
incl. 3m @ 1.9% Li₂O and 128ppm Ta₂O₅ from 123m											
KVRC0126	258713	6958924	520	-87	46	160	80	83	3	1.2	134
							incl. 1m @ 2.1% Li₂O and 147ppm Ta₂O₅ from 81m				
							126	127	1	1	114
							149	150	1	2	252
KVRC0127	258823	6958791	519	-55	46	120	10	12	2	0.6	313
							68	70	2	1.6	212
							incl. 1m @ 2.6% Li₂O and 282ppm Ta₂O₅ from 69m				
							81	84	3	0.8	127
							87	89	2	1.3	65
KVRC0128	258796	6958757	522	-53	44	120	11	14	3	1.4	230
							incl. 1m @ 2% Li₂O and 334ppm Ta₂O₅ from 13m				
							45	48	3	0.7	203
							57	58	1	1.2	105
							91	99	8	0	134
KVRC0129	258795	6958758	523	-55	224	120	7	10	3	1.2	319
							incl. 1m @ 2.2% Li₂O and 381ppm Ta₂O₅ from 8m				
							16	19	3	1.1	207
							27	28	1	2	285
							86	98	12	1.4	204
incl. 6m @ 1.9% Li₂O and 183ppm Ta₂O₅ from 86m											

Appendix 1 (cont.) – Kathleen Valley – Reverse Circulation Drill hole statistics

Hole_ID	East	North	RL	Dip	Azimuth	Depth (m)	Significant Li2O (>0.4%) and Ta2O5 (>50ppm) results				
							From(m)	To(m)	Interval(m)	Li2O (%)	Ta2O5 (ppm)
KVRC0130	258795	6958755	523	-88	53	120	8	10	2	0.6	130
							12	14	2	1.9	353
							34	36	2	0.7	256
							55	57	2	0.9	77
							84	93	9	1.3	187
							incl. 4m @ 1.9% Li2O and 200ppm Ta2O5 from 87m				
							108	109	1	0.6	135
KVRC0130A					160	No significant assays					
KVRC0131	258371	6958888	513	-55	41	214	81	82	1	0.9	285
							90	93	3	0.5	107
							114	116	2	1.2	320
							142	143	1	0.8	421
							148	156	8	1.8	83
							incl. 3m @ 2.4% Li2O and 65ppm Ta2O5 from 148m				
							162	163	1	0.6	166
							175	187	12	1.2	160
							incl. 4m @ 2.1% Li2O and 164ppm Ta2O5 from 175m				
							198	208	10	1.5	151
							incl. 1m @ 2.9% Li2O and 132ppm Ta2O5 from 199m and 4m @ 1.8% Li2O and 162ppm Ta2O5 from 202m				
							KVRC0132				
incl. 3m @ 2.4% Li2O and 283ppm Ta2O5 from 100m											
141	145	4	1.8	164							
incl. 3m @ 2.2% Li2O and 189ppm Ta2O5 from 142m											
152	153	1	0.9	150							
KVRC0132A*	258421	6958793	512	-54	48	228	176	181	5	0.9	92
							incl. 1m @ 1.6% Li2O and 24ppm Ta2O5 from 178m				
							184	189	5	1.5	108
							incl. 3m @ 1.9% Li2O and 92ppm Ta2O5 from 185m				
							204	210	6	1.4	136
incl. 2m @ 2% Li2O and 137ppm Ta2O5 from 206m											
KVRC0133	258494	6958713	514	-55	45	170	70	72	2	1.4	185
							96	98	2	1.1	266
							108	113	5	1.6	226
							incl. 3m @ 2% Li2O and 252ppm Ta2O5 from 108m				
KVRC0133A*						240	131	133	2	1.7	103
							188	199	11	1.3	124
							incl. 3m @ 2.4% Li2O and 132ppm Ta2O5 from 192m				
KVRC0134	258606	6958572	520	-55	49	160	217	220	3	0.7	59
							41	44	3	1	332
							incl. 1m @ 1.7% Li2O and 270ppm Ta2O5 from 42m				
							86	95	9	1.7	296
							incl. 5m @ 2.3% Li2O and 405ppm Ta2O5 from 88m				
							103	105	2	1.1	120
							incl. 1m @ 1.8% Li2O and 215ppm Ta2O5 from 103m				
							106	110	4	1.3	150
							incl. 2m @ 1.7% Li2O and 153ppm Ta2O5 from 107m				
KVRC0135A	258189	6959595	510	-54	46	80	131	133	2	0.9	159
							56	64	8	1.2	122
							incl. 3m @ 2% Li2O and 183ppm Ta2O5 from 59m				
							128	130	2	0.8	99
							319	341	22	1.3	132
incl. 1m @ 2.4% Li2O and 112ppm Ta2O5 from 321m and 5m @ 2.1% Li2O and 109ppm Ta2O5 from 325m											

Appendix 1 (cont.) – Kathleen Valley – Reverse Circulation Drill hole statistics

Hole_ID	East	North	RL	Dip	Azimuth	Depth (m)	Significant Li2O (>0.4%) and Ta2O5 (>50ppm) results				
							From(m)	To(m)	Interval(m)	Li2O (%)	Ta2O5 (ppm)
KVRC0136						110	95	103	8	1.3	120
							incl. 1m @ 3.7% Li2O and 136ppm Ta2O5 from 98m				
KVRC0136A	258120	6959522	510	-64	46	300	219	222	3	1.3	211
							incl. 1m @ 2.1% Li2O and 213ppm Ta2O5 from 220m				
							256	285	29	1.3	171
							incl. 13m @ 1.8% Li2O and 189ppm Ta2O5 from 261m and 1m @ 2.3% Li2O and 158ppm Ta2O5 from 282m				
KVRC0137	258083	6959629	510	-60	46	120	No significant assays				
KVRC0138	258164	6959718	510	-55	45	100					
KVRC0139	258184	6959859	510	-55	44	100					
KVRC0140	258105	6959801	510	-55	44	130					
KVRC0141	258037	6959868	512	-62	44	124					
KVRC0142	258109	6959937	512	-55	41	112					
KVRC0143	258464	6959736	508	-56	47	94	85	86	1	0	237
KVRC0144	258422	6959693	508	-55	42	106	63	65	2	0	158
KVRC0145						130	23	28	5	0	166
							44	48	4	1.5	166
							incl. 2m @ 2.5% Li2O and 133ppm Ta2O5 from 45m				
KVRC0145A	257970	6959380	508	-57	42	378	188	192	4	2.2	142
							incl. 3m @ 2.7% Li2O and 133ppm Ta2O5 from 188m				
							218	220	2	1	212
							241	244	3	1.7	76
							incl. 2m @ 2.1% Li2O and 82ppm Ta2O5 from 242m				
							258	268	10	1.2	103
							incl. 2m @ 1.8% Li2O and 90ppm Ta2O5 from 259m and 1m @ 2.3% Li2O and 59ppm Ta2O5 from 263m				
							302	316	14	0.9	201
							incl. 1m @ 1.7% Li2O and 200ppm Ta2O5 from 320m				
KVRC0146						118	No significant assays				
KVRC0146A	257880	6959300	508	-56	45	348	211	222	11	1.8	51
							incl. 4m @ 3.7% Li2O and 29ppm Ta2O5 from 212m				
							249	255	6	1	105
							273	284	11	1.9	116
							incl. 5m @ 2.6% Li2O and 112ppm Ta2O5 from 274m				
							303	322	19	1.4	197
							incl. 3m @ 1.9% Li2O and 195ppm Ta2O5 from 274m				
KVRC0147	258005	6959346	508	-54	47	120	29	33	4	0	192
KVRC0148						120	42	45	3	1.2	214
							incl. 1m @ 2% Li2O and 183ppm Ta2O5 from 43m				
KVRC0148A	257963	6959302	508	-56	42	348	199	211	12	1.3	83
							incl. 1m @ 2.8% Li2O and 65ppm Ta2O5 from 199m and 3m @ 3.1% Li2O and 140ppm Ta2O5 from 206m				
							240	247	7	1	113
							incl. 3m @ 1.6% Li2O and 121ppm Ta2O5 from 241m				
							264	277	13	1.8	114
							incl. 6m @ 2.9% Li2O and 122ppm Ta2O5 from 266m				
							313	338	25	1.3	179
							incl. 6m @ 1.9% Li2O and 154ppm Ta2O5 from 316m and 3m @ 1.7% Li2O and 200ppm Ta2O5 from 324m and 1m @ 2.1% Li2O and 257ppm Ta2O5 from 335m				
KVRC0149	257957	6959503	508	-55	45	120	97	101	4	0	251
KVRC0150	257914	6959462	508	-54	46	120	90	93	3	0	251

Appendix 1 (cont.) – Kathleen Valley – Reverse Circulation Drill hole statistics

Hole_ID	East	North	RL	Dip	Azimuth	Depth (m)	Significant Li2O (>0.4%) and Ta2O5 (>50ppm) results				
							From(m)	To(m)	Interval(m)	Li2O (%)	Ta2O5 (ppm)
KVRC0151	258335	6958500	516	-57	48	222	149	160	11	1.8	129
							incl. 9m @ 2% Li2O and 135ppm Ta2O5 from 150m				
							167	173	6	1.5	117
							incl. 5m @ 1.6% Li2O and 114ppm Ta2O5 from 168m				
							183	192	9	1.5	165
							incl. 5m @ 1.8% Li2O and 146ppm Ta2O5 from 183m and 1m @ 1.8% Li2O and 164ppm Ta2O5 from 190m				
KVRC0153	258484	6958642	511	-59	43	150	79	83	4	0.5	218
							101	102	1	1.1	531
							104	112	8	1.1	284
							incl. 3m @ 1.7% Li2O and 361ppm Ta2O5 from 106m				
							114	120	6	0.5	1
							128	132	4	1.5	109
incl. 1m @ 1.9% Li2O and 190ppm Ta2O5 from 131m											
KVRC0154	258521	6958677	510	-59	46	150	80	81	1	1.2	129
							88	91	3	0.5	123
							106	114	8	1.1	249
incl. 2m @ 1.9% Li2O and 197ppm Ta2O5 from 107m											
KVRC0154A*					240	204	209	5	8	106	
incl. 1m @ 1.7% Li2O and 109ppm Ta2O5 from 205m											
KVRC0155	258264	6958571	514	-59	45	228	152	161	9	1.6	108
							incl. 4m @ 1.9% Li2O and 111ppm Ta2O5 from 155m				
							180	186	6	1.7	181
							incl. 4m @ 2.1% Li2O and 184ppm Ta2O5 from 180m				
							189	195	6	0.9	58
							incl. 2m @ 1.6% Li2O and 105ppm Ta2O5 from 192m				
							198	204	6	0.6	78
							220	223	3	1.3	76
incl. 1m @ 1.9% Li2O and 92ppm Ta2O5 from 221m											
KVRC0155A*					282	226	246	20	1.4	112	
	incl. 5m @ 2.4% Li2O and 121ppm Ta2O5 from 234m										
	252	258	6	1.8	127						
incl. 5m @ 2.1% Li2O and 143ppm Ta2O5 from 253m											
KVRC0156	258745	6958797	524	-54	222	168	30	32	2	1	396
							35	38	3	0.8	237
							98	113	15	1.3	244
							incl. 8m @ 1.8% Li2O and 221ppm Ta2O5 from 103m				
KVRC0157	258756	6958807	523	-79	40	150	14	17	3	1	180
							63	64	1	1.9	138
							77	87	10	1.5	247
							incl. 2m @ 2.1% Li2O and 244ppm Ta2O5 from 77m and 3m @ 2.1% Li2O and 138ppm Ta2O5 from 83m				
							115	116	1	1.1	140
							172	176	4	1.7	136
KVRC0157A*					190	incl. 2m @ 2.3% Li2O and 148ppm Ta2O5 from 173m					
KVRC0158	258756	6958807	523	-71	220	150	19	21	2	1.2	204
							79	82	3	1.2	50
							incl. 1m @ 1.9% Li2O and 71ppm Ta2O5 from 80m				
							85	93	8	1.1	189
							incl. 1m @ 2% Li2O and 285ppm Ta2O5 from 89m				
							134	135	1	1.2	84
137	138	1	0.3	118							
KVRC0158A*					240	209	211	2	1.5	274	

Appendix 1 (cont.) – Kathleen Valley – Reverse Circulation Drill hole statistics

Hole_ID	East	North	RL	Dip	Azimuth	Depth (m)	Significant Li2O (>0.4%) and Ta2O5 (>50ppm) results				
							From(m)	To(m)	Interval(m)	Li2O (%)	Ta2O5 (ppm)
KVRC0159	258798	6958849	519	-74	39	120	59	60	1	2.1	116
							68	74	6	1.6	215
							incl. 4m @ 2.1% Li2O and 87ppm Ta2O5 from 69m				
KVRC0159A*	258798	6958849	519	-74	39	160	87	89	2	1.2	133
							127	131	4	1.3	96
						incl. 1m @ 2.5% Li2O and 114ppm Ta2O5 from 128m					
KVRC0160	258841	6958892	516	-67	41	120	75	77	2	1	144
KVRC0161	258429	6958726	511	-56	43	226	110	111	1	0.8	455
							137	144	7	0	206
							188	192	4	0	294
							198	210	12	0	166
KVRC0162	258883	6958933	514	-61	45	120	40	42	2	0.7	191
							70	77	7	0	257
KVRC0163	258206	6958638	515	-59	45	274	105	108	3	1.2	112
							incl. 1m @ 1.7% Li2O and 109ppm Ta2O5 from 105m				
							110	112	2	0.6	55
							125	133	8	1.1	93
							incl. 3m @ 2% Li2O and 124ppm Ta2O5 from 129m				
							136	143	7	1.2	76
							incl. 2m @ 1.8% Li2O and 94ppm Ta2O5 from 137m and 1m @ 1.8% Li2O and 81ppm Ta2O5 from 141m				
							169	171	2	1.1	82
							177	180	3	1.2	102
							incl. 1m @ 1.8% Li2O and 110ppm Ta2O5 from 178m				
							189	194	5	1.2	199
							incl. 1m @ 1.5% Li2O and 287ppm Ta2O5 from 190m and 1m @ 1.5% Li2O and 158ppm Ta2O5 from 192m				
							207	210	3	1.4	127
							214	226	12	1.6	95
							incl. 4m @ 2.6% Li2O and 79ppm Ta2O5 from 214m and 3m @ 1.9% Li2O and 104ppm Ta2O5 from 220m				
							239	246	7	1.1	101
incl. 2m @ 2.2% Li2O and 74ppm Ta2O5 from 240m											
249	257	8	0.9	122							
incl. 1m @ 1.6% Li2O and 120ppm Ta2O5 from 252m											
KVRC0164	258927	6958975	513	-50	42	120	74	76	2	0.8	250
							98	99	1	0.8	111
KVRC0165	258867	6958830	515	-48	41	132	78	81	3	1.4	148
							incl. 1m @ 2.2% Li2O and 112ppm Ta2O5 from 79m				
						86	91	5	0.9	174	
KVRC0166	258969	6959017	513	-51	42	120	6	8	2	0.8	49
							48	49	1	1.7	177
							102	105	3	1.7	167
						incl. 2m @ 2.2% Li2O and 157ppm Ta2O5 from 102m					
KVRC0167	258909	6958872	514	-48	46	140	49	52	3	1.5	157
							incl. 2m @ 2% Li2O and 211ppm Ta2O5 from 50m				
							59	61	2	1	134
						93	95	2	1	190	
KVRC0168	259012	6959060	513	-51	41	120	10	11	1	1.9	165
							106	109	3	0.7	166
KVRC0169	259037	6959000	513	-49	46	120	14	15	1	0.8	104
							37	38	1	0.9	416
							82	83	1	1.3	93
							116	117	1	0.8	130

Appendix 1 (cont.) – Kathleen Valley – Reverse Circulation Drill hole statistics

Hole_ID	East	North	RL	Dip	Azimuth	Depth (m)	Significant Li2O (>0.4%) and Ta2O5 (>50ppm) results				
							From(m)	To(m)	Interval(m)	Li2O (%)	Ta2O5 (ppm)
KVRC0170	258332	6958764	509	-49	45	250	101	102	1	1	499
							110	113	3	1.7	429
							incl. 1m @ 2.1% Li2O and 367ppm Ta2O5 from 110m				
							168	173	5	1.5	294
							incl. 3m @ 1.7% Li2O and 327ppm Ta2O5 from 169m				
							185	196	11	1.3	98
							incl. 4m @ 2% Li2O and 120ppm Ta2O5 from 186m				
							207	215	8	1.7	151
							incl. 4m @ 2.1% Li2O and 121ppm Ta2O5 from 208m and 1m @ 2.5% Li2O and 243ppm Ta2O5 from 213m				
							220	226	6	1.9	85
							incl. 4m @ 2.4% Li2O and 95ppm Ta2O5 from 221m				
KVRC0171	259037	6959000	513	-50	44	120	79	83	4	1.5	105
							incl. 2m @ 2.1% Li2O and 117ppm Ta2O5 from 80m				
KVRC0172	258839	6958662	520	-55	227	170	30	34	4	1.6	237
							incl. 2m @ 2% Li2O and 257ppm Ta2O5 from 30m				
							86	87	1	0.8	246
							94	97	3	1.4	152
incl. 1m @ 2.7% Li2O and 235ppm Ta2O5 from 95m											
KVRC0173	258977	6958945	513	-49	44	120	61	62	1	1.7	125
							19	23	4	1.5	118
KVRC0174	258209	6958787	508	-48	47	278	incl. 1m @ 2.3% Li2O and 107ppm Ta2O5 from 21m				
							192	223	31	1.7	223
							incl. 10m @ 1.9% Li2O and 281ppm Ta2O5 from 193m and 1m @ 2.6% Li2O and 95ppm Ta2O5 from 205m and 9m @ 2% Li2O and 138ppm Ta2O5 from 208m and 1m @ 2.1% Li2O and 367ppm Ta2O5 from 221m				
							245	250	5	1.1	14
							incl. 1m @ 2% Li2O and 48ppm Ta2O5 from 246m and 1m @ 1.7% Li2O and 141ppm Ta2O5 from 249m				
							25	28	3	1.3	220
							incl. 1m @ 1.9% Li2O and 164ppm Ta2O5 from 26m				
							82	85	3	1.6	193
incl. 2m @ 2.3% Li2O and 208ppm Ta2O5 from 83m											
KVRC0176	258351	6958919	511	-53	44	258	87	88	1	0.9	577
							116	118	2	0.7	222
							147	155	8	2	81
							169	177	8	1.1	149
							incl. 4m @ 1.7% Li2O and 191ppm Ta2O5 from 173m				
							186	197	11	1	174
							incl. 1m @ 1.6% Li2O and 150ppm Ta2O5 from 193m				
							204	208	4	1.5	149
							incl. 2m @ 2% Li2O and 187ppm Ta2O5 from 205m				
							217	220	3	1.3	126
incl. 2m @ 1.8% Li2O and 117ppm Ta2O5 from 217m											
KVRC0177	258939	6958762	513	-61	46	118	42	44	2	1.2	110
							incl. 1m @ 1.9% Li2O and 116ppm Ta2O5 from 43m				
							50	56	6	0.9	219
							incl. 1m @ 1.9% Li2O and 184ppm Ta2O5 from 51m				
							83	85	2	1.7	165
incl. 1m @ 2% Li2O and 169ppm Ta2O5 from 84m											
KVRC0178	259009	6958839	513	-49	44	130	65	70	5	1.5	164
							incl. 2m @ 2.2% Li2O and 192ppm Ta2O5 from 66m				
							92	93	1	1.4	152

Appendix 1 (cont.) – Kathleen Valley – Reverse Circulation Drill hole statistics

Hole_ID	East	North	RL	Dip	Azimuth	Depth (m)	Significant Li ₂ O (>0.4%) and Ta ₂ O ₅ (>50ppm) results				
							From(m)	To(m)	Interval(m)	Li ₂ O (%)	Ta ₂ O ₅ (ppm)
KVRC0179	258897	6958576	518	-55	226	172	20	23	3	1	234
							25	26	1	1	243
							112	116	4	1.7	144
							incl. 2m @ 2.5% Li ₂ O and 154ppm Ta ₂ O ₅ from 114m				
KVRC0180	258204	6958928	507	-49	43	280	168	180	12	1	127
							incl. 1m @ 1.9% Li ₂ O and 158ppm Ta ₂ O ₅ from 175m				
							185	197	12	1.3	191
							incl. 5m @ 2.1% Li ₂ O and 224ppm Ta ₂ O ₅ from 188m				
							210	215	5	1.9	140
							incl. 4m @ 2.2% Li ₂ O and 149ppm Ta ₂ O ₅ from 210m				
							218	224	6	8	81
							incl. 1m @ 1.7% Li ₂ O and 131ppm Ta ₂ O ₅ from 221m				
							227	232	5	1.4	169
							incl. 2m @ 1.9% Li ₂ O and 161ppm Ta ₂ O ₅ from 229m				
							240	250	10	1.4	165
							incl. 3m @ 1.7% Li ₂ O and 182ppm Ta ₂ O ₅ from 242m				
KVRC0181	258998	6958677	514	-60	42	118	259	261	2	1.1	182
							47	52	5	1.5	220
							incl. 3m @ 2% Li ₂ O and 200ppm Ta ₂ O ₅ from 48m				
KVRC0182	258913	6958592	517	-69	43	118	24	32	8	1.5	236
							incl. 1m @ 4.2% Li ₂ O and 325ppm Ta ₂ O ₅ from 26m and 1m @ 1.9% Li ₂ O and 291ppm Ta ₂ O ₅ from 29m				
							63	66	3	1.2	95
							incl. 1m @ 1.6% Li ₂ O and 78ppm Ta ₂ O ₅ from 64m				
KVRC0183	258305	6959000	508	-50	46	234	150	152	2	1	229
							158	169	11	1.7	211
							incl. 1m @ 2.7% Li ₂ O and 294ppm Ta ₂ O ₅ from 158m and 1m @ 2% Li ₂ O and 97ppm Ta ₂ O ₅ from 162m and 5m @ 2.4% Li ₂ O and 350ppm Ta ₂ O ₅ from 164m				
							173	174	1	2.1	137
							180	187	7	1.6	143
							incl. 3m @ 2.3% Li ₂ O and 141ppm Ta ₂ O ₅ from 181m				
							195	212	17	1.3	147
							incl. 5m @ 2% Li ₂ O and 205ppm Ta ₂ O ₅ from 199m and 5m @ 1.7% Li ₂ O and 170ppm Ta ₂ O ₅ from 207m				
							KVRC0184	259083	6958762	514	-50
75	80	5	0.8	122							
84	86	2	1.7	93							
incl. 1m @ 2.2% Li ₂ O and 106ppm Ta ₂ O ₅ from 85m											
KVRC0185	258002	6958860	511	-58	46	274	68	72	4	1.1	128
							incl. 1m @ 1.8% Li ₂ O and 138ppm Ta ₂ O ₅ from 70m				
							114	117	3	1	96
							235	237	2	0.6	113
							240	260	20	1	203
							incl. 3m @ 1.7% Li ₂ O and 194ppm Ta ₂ O ₅ from 256m				
KVRC0186	258954	6958493	518	-55	221	170	264	270	6	1.6	214
							incl. 5m @ 1.8% Li ₂ O and 220ppm Ta ₂ O ₅ from 265m				
							49	56	7	1.5	189
							incl. 1m @ 2% Li ₂ O and 190ppm Ta ₂ O ₅ from 50m and 1m @ 2.6% Li ₂ O and 396ppm Ta ₂ O ₅ from 52m and 2m @ 1.6% Li ₂ O and 136ppm Ta ₂ O ₅ from 54m				
KVRC0187	258968	6958507	517	-70	51	150	138	140	2	2.3	158
							49	53	4	1.3	229
							incl. 1m @ 2.1% Li ₂ O and 190ppm Ta ₂ O ₅ from 49m				
							69	71	2	1.2	77

Appendix 1 (cont.) – Kathleen Valley – Reverse Circulation Drill hole statistics

Hole_ID	East	North	RL	Dip	Azimuth	Depth (m)	Significant Li2O (>0.4%) and Ta2O5 (>50ppm) results				
							From(m)	To(m)	Interval(m)	Li2O (%)	Ta2O5 (ppm)
KVRC0188	259053	6958592	514	-59	47	120	63	67	4	1	239
							incl. 1m @ 1.6% Li2O and 147ppm Ta2O5 from 63m				
KVRC0189	259138	6958677	514	-53	47	120	7	8	1	1.3	327
							63	65	2	0.5	143
							84	86	2	0.9	75
KVRC0190	258172	6959029	513	-59	45	264	144	147	3	0.4	158
							190	193	3	0.9	429
							205	213	8	1.6	166
							incl. 6m @ 2% Li2O and 198ppm Ta2O5 from 206m				
							217	224	7	1.6	202
							incl. 5m @ 1.8% Li2O and 177ppm Ta2O5 from 217m				
							227	231	4	1	270
							240	242	2	0.8	163
						246	248	2	0.6	184	
KVRC0191	258676	6958155	529	-69	230	150	No significant assays				
KVRC0192	258661	6958209	535	-88	309	148	No significant assays				
KVRC0193	258775	6958314	525	-56	42	166	64	67	3	1.7	167
							incl. 1m @ 2.5% Li2O and 76ppm Ta2O5 from 64m				
KVRC0194	258500	6958335	530	-86	141	324	163	181	18	1.7	160
							incl. 8m @ 2.1% Li2O and 142ppm Ta2O5 from 163m and 4m @ 1.9% Li2O and 200ppm Ta2O5 from 174m				
							184	199	15	1.1	76
							incl. 1m @ 2.6% Li2O and 175ppm Ta2O5 from 185m and 2m @ 2.5% Li2O and 176ppm Ta2O5 from 195m				
							242	254	12	1.5	67
							incl. 6m @ 2% Li2O and 64ppm Ta2O5 from 243m				
KVRC0195	258740	6958352	531	-60	47	172	76	79	3	1.4	112
							incl. 1m @ 2.2% Li2O and 155ppm Ta2O5 from 77m				
KVRC0196	258720	6958401	533	-61	45	172	56	58	2	0.7	264
							70	74	4	2	242
							incl. 2m @ 2.7% Li2O and 94ppm Ta2O5 from 71m				
KVRC0197	258568	6958279	546	-57	8	174	115	136	21	1.2	214
							incl. 5m @ 1.7% Li2O and 115ppm Ta2O5 from 120m				
							141	143	2	0.9	61
							159	167	8	0.8	181
KVRC0198	258672	6958425	537	-60	47	262	59	62	3	0.8	220
							69	74	5	1.1	235
							118	121	3	1	173
							141	142	1	0.8	165
							144	146	2	1.2	152
KVRC0199	258595	6958225	544	-84	41	300	incl. 13m @ 2.1% Li2O and 150ppm Ta2O5 from 143m and 2m @ 2.1% Li2O and 270ppm Ta2O5 from 164m				
							172	182	10	1.1	113
							incl. 1m @ 2.6% Li2O and 187ppm Ta2O5 from 176m and 2m @ 1.8% Li2O and 176ppm Ta2O5 from 180m				
							285	289	4	0.9	327
							incl. 1m @ 1.5% Li2O and 165ppm Ta2O5 from 288m				

Appendix 1 (cont.) – Kathleen Valley – Reverse Circulation Drill hole statistics

Hole_ID	East	North	RL	Dip	Azimuth	Depth (m)	Significant Li2O (>0.4%) and Ta2O5 (>50ppm) results				
							From(m)	To(m)	Interval(m)	Li2O (%)	Ta2O5 (ppm)
KVRC0200	258087	6958945	512	-61	42	280	19	21	2	0.6	177
							32	34	2	1.2	89
							incl. 1m @ 1.7% Li2O and 122ppm Ta2O5 from 32m				
							168	179	11	1.9	85
							incl. 7m @ 2.6% Li2O and 63ppm Ta2O5 from 169m				
							208	234	26	1.4	183
							incl. 3m @ 2.2% Li2O and 179ppm Ta2O5 from 212m and 10m @ 1.9% Li2O and 252ppm Ta2O5 from 218m				
							246	257	11	1.3	146
							incl. 4m @ 1.9% Li2O and 129ppm Ta2O5 from 246m and 1m @ 2.8% Li2O and 337ppm Ta2O5 from 256m				
							KVRC0201	258568	6958279	547	-79
incl. 3m @ 1.9% Li2O and 169ppm Ta2O5 from 155m											
167	188	21	1.6	157							
incl. 8m @ 2.1% Li2O and 142ppm Ta2O5 from 170m and 5m @ 2.1% Li2O and 144ppm Ta2O5 from 182m											
201	211	10	1.1	108							
KVRC0202	258123	6958843	507	-80	42	262	incl. 1m @ 2.7% Li2O and 164ppm Ta2O5 from 209m				
							174	176	2	2.3	41
							182	186	4	1.2	118
							incl. 2m @ 1.6% Li2O and 101ppm Ta2O5 from 182m				
							204	224	20	1.5	150
							incl. 6m @ 2.1% Li2O and 142ppm Ta2O5 from 205m and 2m @ 1.9% Li2O and 156ppm Ta2O5 from 216m and 2m @ 2% Li2O and 181ppm Ta2O5 from 219m				
KVRC0203	258563	6958257	546	-79	46	228	236	240	4	1.3	151
							incl. 1m @ 2% Li2O and 243ppm Ta2O5 from 237m				
							141	167	26	1.6	176
							incl. 12m @ 1.9% Li2O and 166ppm Ta2O5 from 142m and 9m @ 1.8% Li2O and 172ppm Ta2O5 from 158m				
KVRC0204	258420	6958398	525	-69	48	294	187	197	10	0.9	64
							incl. 2m @ 1.6% Li2O and 89ppm Ta2O5 from 191m				
							180	184	4	0.8	113
							198	250	52	1.4	113
							incl. 10m @ 2% Li2O and 129ppm Ta2O5 from 202m and 2m @ 1.8% Li2O and 155ppm Ta2O5 from 216m and 1m @ 2.2% Li2O and 141ppm Ta2O5 from 220m and 7m @ 2% Li2O and 103ppm Ta2O5 from 227m and 2m @ 1.9% Li2O and 129ppm Ta2O5 from 238m and 1m @ 2.4% Li2O and 118ppm Ta2O5 from 243m				
							260	276	16	1.4	114
							incl. 4m @ 1.9% Li2O and 138ppm Ta2O5 from 261m and 5m @ 1.8% Li2O and 107ppm Ta2O5 from 268m				
							incl. 1m @ 1.9% Li2O and 244ppm Ta2O5 from 191m				
KVRC0205	258158	6958878	506	-62	46	270	189	195	6	1.3	191
							incl. 1m @ 1.9% Li2O and 244ppm Ta2O5 from 191m				
							197	199	2	0.5	218
							202	208	6	1.5	125
incl. 4m @ 1.9% Li2O and 122ppm Ta2O5 from 203m											

Appendix 1 (cont.) – Kathleen Valley – Reverse Circulation Drill hole statistics

Hole_ID	East	North	RL	Dip	Azimuth	Depth (m)	Significant Li ₂ O (>0.4%) and Ta ₂ O ₅ (>50ppm) results				
							From(m)	To(m)	Interval(m)	Li ₂ O (%)	Ta ₂ O ₅ (ppm)
KVRC0206	258495	6958398	510	-89	199	324	168	174	6	1.4	198
							incl. 1m @ 2% Li ₂ O and 126ppm Ta ₂ O ₅ from 170m				
							176	182	6	1.7	210
							incl. 2m @ 2.8% Li ₂ O and 108ppm Ta ₂ O ₅ from 180m				
							206	233	27	1.5	103
							incl. 5m @ 1.9% Li ₂ O and 131ppm Ta ₂ O ₅ from 206m and 3m @ 2% Li ₂ O and 180ppm Ta ₂ O ₅ from 213m and 5m @ 1.9% Li ₂ O and 116ppm Ta ₂ O ₅ from 221m and 2m @ 1.8% Li ₂ O and 92ppm Ta ₂ O ₅ from 227m				
							238	241	3	1.8	87
							262	269	7	1.2	143
							incl. 2m @ 1.6% Li ₂ O and 245ppm Ta ₂ O ₅ from 266m				
							272	276	4	0.7	51
							KVRC0207	258228	6958536	519	-73
246	266	20	1.2	82							
incl. 4m @ 2% Li ₂ O and 79ppm Ta ₂ O ₅ from 253m and 2m @ 2% Li ₂ O and 88ppm Ta ₂ O ₅ from 261m											
KVRC0207A*	258228	6958536	519	-73	44	354	289	342	53	1.6	115
							incl. 3m @ 2.4% Li ₂ O and 85ppm Ta ₂ O ₅ from 291m and 15m @ 2% Li ₂ O and 97ppm Ta ₂ O ₅ from 300m and 18m @ 1.8% Li ₂ O and 121ppm Ta ₂ O ₅ from 321m				
							154	168	14	1.7	110
KVRC0208	258382	6958460	518	-69	43	282	incl. 9m @ 2.1% Li ₂ O and 116ppm Ta ₂ O ₅ from 157m				
							189	207	18	1.6	104
							incl. 12m @ 2.2% Li ₂ O and 135ppm Ta ₂ O ₅ from 190m				
							209	213	4	1.3	138
							incl. 2m @ 1.9% Li ₂ O and 221ppm Ta ₂ O ₅ from 210m				
							218	228	10	1.2	72
							incl. 5m @ 1.6% Li ₂ O and 101ppm Ta ₂ O ₅ from 218m				
							251	263	12	1.2	132
							incl. 2m @ 2.3% Li ₂ O and 162ppm Ta ₂ O ₅ from 252m and 3m @ 1.7% Li ₂ O and 117ppm Ta ₂ O ₅ from 256m				
KVRC0209	258465	6958760	513	-51	44	244	66	69	3	0.7	155
							108	113	5	1.2	171
							incl. 2m @ 2.1% Li ₂ O and 209ppm Ta ₂ O ₅ from 108m				
							138	141	3	0.8	167
							176	186	10	1.3	149
							incl. 3m @ 2% Li ₂ O and 138ppm Ta ₂ O ₅ from 180m				
							195	200	5	0.8	51
incl. 1m @ 2.1% Li ₂ O and 79ppm Ta ₂ O ₅ from 196m											
KVRC0210	258535	6958607	513	-53	35	250	85	90	5	1.2	401
							incl. 2m @ 2.1% Li ₂ O and 466ppm Ta ₂ O ₅ from 86m				
							96	99	3	0.4	4
							101	104	3	0.9	244
							110	125	15	1.5	198
							incl. 5m @ 2.2% Li ₂ O and 253ppm Ta ₂ O ₅ from 114m and 3m @ 2% Li ₂ O and 251ppm Ta ₂ O ₅ from 120m				
							229	230	1	1	64
							234	235	1	0.7	93
KVRC0211	258367	6958445	518	-79	45	306	242	290	48	1.4	115
							incl. 1m @ 2% Li ₂ O and 117ppm Ta ₂ O ₅ from 244m and 1m @ 2.3% Li ₂ O and 107ppm Ta ₂ O ₅ from 246m and 8m @ 2.3% Li ₂ O and 95ppm Ta ₂ O ₅ from 251m and 2m @ 1.9% Li ₂ O and 107ppm Ta ₂ O ₅ from 268m and 4m @ 2.2% Li ₂ O and 138ppm Ta ₂ O ₅ from 272m				

Appendix 1 (cont.) – Kathleen Valley – Reverse Circulation Drill hole statistics

Hole_ID	East	North	RL	Dip	Azimuth	Depth (m)	Significant Li2O (>0.4%) and Ta2O5 (>50ppm) results				
							From(m)	To(m)	Interval(m)	Li2O (%)	Ta2O5 (ppm)
KVRC0212	258461	6958687	512	-71	47	240	91	93	2	0.8	235
							103	108	5	1.2	185
							incl. 2m @ 1.8% Li2O and 323ppm Ta2O5 from 104m				
							126	131	5	1.3	185
							incl. 2m @ 2% Li2O and 241ppm Ta2O5 from 127m				
							183	194	11	1.4	138
							incl. 5m @ 2% Li2O and 166ppm Ta2O5 from 186m				
KVRC0213	258498	6958573	514	-67	43	252	82	88	6	0.5	126
							95	100	5	1.7	290
							incl. 3m @ 2.5% Li2O and 371ppm Ta2O5 from 95m				
							131	142	11	1.3	114
							incl. 8m @ 1.6% Li2O and 144ppm Ta2O5 from 134m				
							213	218	5	1.8	123
incl. 3m @ 2.1% Li2O and 108ppm Ta2O5 from 214m											
KVRC0214	258387	6958606	513	-75	44	244	55	67	12	1.7	115
							incl. 1m @ 2.1% Li2O and 150ppm Ta2O5 from 55m and 7m @ 2% Li2O and 111ppm Ta2O5 from 58m				
							86	95	9	1.5	132
							incl. 5m @ 1.9% Li2O and 117ppm Ta2O5 from 89m				
							111	113	2	0.8	191
							142	149	7	1.9	224
							incl. 4m @ 2.8% Li2O and 288ppm Ta2O5 from 144m				
							190	211	21	1.5	93
							incl. 3m @ 2% Li2O and 103ppm Ta2O5 from 197m and 3m @ 2.3% Li2O and 63ppm Ta2O5 from 202m and 1m @ 2.2% Li2O and 123ppm Ta2O5 from 208m				
							KVRC0215	258309	6958545	520	-63
incl. 4m @ 1.7% Li2O and 104ppm Ta2O5 from 164m											
173	192	19	1.5	134							
incl. 4m @ 1.7% Li2O and 121ppm Ta2O5 from 177m and 2m @ 1.8% Li2O and 145ppm Ta2O5 from 183m and 3m @ 2% Li2O and 154ppm Ta2O5 from 188m											
224	249	25	1.5	92							
incl. 6m @ 2% Li2O and 89ppm Ta2O5 from 232m and 6m @ 1.9% Li2O and 96ppm Ta2O5 from 243m											
KVRC0216	258562	6958636	513	-51	44	150					
							incl. 2m @ 1.8% Li2O and 553ppm Ta2O5 from 87m				
							101	104	3	1.5	199
							incl. 2m @ 2% Li2O and 269ppm Ta2O5 from 101m				
							111	118	7	0.6	77
							125	127	2	0.9	227
KVRC0217	258418	6958396	525	-88	212	324	250	285	35	1.7	132
							incl. 8m @ 2.1% Li2O and 152ppm Ta2O5 from 250m and 3m @ 2.3% Li2O and 118ppm Ta2O5 from 260m and 7m @ 1.8% Li2O and 94ppm Ta2O5 from 265m and 5m @ 2.1% Li2O and 145ppm Ta2O5 from 277m				
							289	305	16	1.5	129
							incl. 6m @ 2.2% Li2O and 103ppm Ta2O5 from 290m and 1m @ 2.5% Li2O and 122ppm Ta2O5 from 301m				

Appendix 1 (cont.) – Kathleen Valley – Reverse Circulation Drill hole statistics

Hole_ID	East	North	RL	Dip	Azimuth	Depth (m)	Significant Li2O (>0.4%) and Ta2O5 (>50ppm) results				
							From(m)	To(m)	Interval(m)	Li2O (%)	Ta2O5 (ppm)
KVRC0218	258274	6958509	521	-73	49	334	236	259	23	1	73
							incl. 4m @ 1.6% Li2O and 144ppm Ta2O5 from 237m and 4m @ 1.9% Li2O and 253ppm Ta2O5 from 249m				
							262	273	11	0.8	21
							incl. 1m @ 1.8% Li2O and 98ppm Ta2O5 from 267m				
							277	325	48	1.5	110
							incl. 22m @ 2.1% Li2O and 100ppm Ta2O5 from 289m and 2m @ 1.8% Li2O and 132ppm Ta2O5 from 313m				
KVRC0219	257954	6958812	511	-71	40	310	18	21	3	0.7	118
							98	100	2	1.3	160
							178	184	6	0.5	77
							188	190	2	0.7	148
							198	205	7	1.8	27
							incl. 3m @ 2.7% Li2O and 13ppm Ta2O5 from 198m				
							243	249	6	1.4	69
							incl. 3m @ 2% Li2O and 45ppm Ta2O5 from 244m				
							254	278	24	1.4	153
							incl. 3m @ 1.8% Li2O and 154ppm Ta2O5 from 256m and 5m @ 1.7% Li2O and 158ppm Ta2O5 from 261m and 2m @ 1.9% Li2O and 82ppm Ta2O5 from 268m				
							285	287	2	0.9	180
							293	294	1	1.4	163
KVRC0220	258319	6958486	523	-73	45	318	209	299	90	1.3	78
							incl. 8m @ 2% Li2O and 94ppm Ta2O5 from 211m and 5m @ 2.4% Li2O and 95ppm Ta2O5 from 233m and 4m @ 1.8% Li2O and 129ppm Ta2O5 from 243m and 6m @ 2.2% Li2O and 93ppm Ta2O5 from 254m and 11m @ 1.9% Li2O and 82ppm Ta2O5 from 279m				
							303	305	2	0.8	156
							157	162	5	1.3	125
							incl. 3m @ 1.8% Li2O and 98ppm Ta2O5 from 157m				
KVRC0221	258127	6958987	510	-58	42	268	230	240	10	1.5	151
							incl. 5m @ 1.8% Li2O and 160ppm Ta2O5 from 234m				
							244	245	1	1	172
							248	250	2	1	140
KVRC0222	258153	6958728	509	-54	43	300	66	68	2	1.5	126
							93	97	4	1.3	119
							123	126	3	1.3	79
							incl. 2m @ 1.6% Li2O and 101ppm Ta2O5 from 124m				
							149	151	2	1	82
							192	216	24	1.2	137
							incl. 3m @ 1.7% Li2O and 202ppm Ta2O5 from 192m and 4m @ 1.9% Li2O and 175ppm Ta2O5 from 198m and 2m @ 1.8% Li2O and 128ppm Ta2O5 from 208m and 2m @ 2% Li2O and 205ppm Ta2O5 from 213m				
							220	222	2	0.6	61
							226	234	8	1.2	138
							incl. 2m @ 2.1% Li2O and 181ppm Ta2O5 from 231m				
							237	252	15	1.3	86
							incl. 2m @ 2.3% Li2O and 94ppm Ta2O5 from 241m and 2m @ 2.2% Li2O and 100ppm Ta2O5 from 247m				
							277	280	3	1	134
							incl. 1m @ 1.7% Li2O and 97ppm Ta2O5 from 278m				

Appendix 1 (cont.) – Kathleen Valley – Reverse Circulation Drill hole statistics

Hole_ID	East	North	RL	Dip	Azimuth	Depth (m)	Significant Li2O (>0.4%) and Ta2O5 (>50ppm) results						
							From(m)	To(m)	Interval(m)	Li2O (%)	Ta2O5 (ppm)		
KVRC0223	258185	6958903	507	-57	44	262	169	184	15	1.1	123	incl. 1m @ 1.9% Li2O and 485ppm Ta2O5 from 169m and 2m @ 1.6% Li2O and 125ppm Ta2O5 from 172m and 1m @ 1.8% Li2O and 152ppm Ta2O5 from 182m	
							192	202	10	1.3	230	incl. 3m @ 1.8% Li2O and 255ppm Ta2O5 from 193m and 1m @ 2.1% Li2O and 447ppm Ta2O5 from 198m	
							209	219	10	1.2	135	incl. 2m @ 2.1% Li2O and 115ppm Ta2O5 from 210m	
							226	233	7	1.6	161	incl. 3m @ 2.2% Li2O and 188ppm Ta2O5 from 226m	
							241	247	6	1.7	137	incl. 3m @ 2.1% Li2O and 136ppm Ta2O5 from 241m	
							255	257	2	1.2	111	incl. 1m @ 1.7% Li2O and 143ppm Ta2O5 from 256m	
							106	109	3	0.9	133		
							153	155	2	1.1	125		
							158	171	13	1.1	101	incl. 3m @ 1.7% Li2O and 177ppm Ta2O5 from 159m	
							173	182	9	1.4	124	incl. 3m @ 1.9% Li2O and 156ppm Ta2O5 from 178m	
							186	187	1	1.3	101		
							201	202	1	1.1	56		
							240	283	43	1.7	108	incl. 5m @ 2.1% Li2O and 88ppm Ta2O5 from 240m and 5m @ 2% Li2O and 127ppm Ta2O5 from 256m and 10m @ 2% Li2O and 107ppm Ta2O5 from 263m and 5m @ 2% Li2O and 116ppm Ta2O5 from 277m	
							KVRC0225	258284	6958860	510	-49	46	268
172	181	9	1.5	185	incl. 1m @ 2.8% Li2O and 368ppm Ta2O5 from 176m								
184	187	3	1.1	214	incl. 1m @ 1.9% Li2O and 336ppm Ta2O5 from 186m								
189	207	18	1.1	166	incl. 5m @ 1.9% Li2O and 214ppm Ta2O5 from 189m								
210	220	10	1.2	108	incl. 3m @ 2.5% Li2O and 144ppm Ta2O5 from 214m								
238	247	9	1.2	130	incl. 3m @ 1.9% Li2O and 158ppm Ta2O5 from 240m								

Appendix 1 (cont.) – Kathleen Valley – Reverse Circulation Drill hole statistics

Hole_ID	East	North	RL	Dip	Azimuth	Depth (m)	Significant Li2O (>0.4%) and Ta2O5 (>50ppm) results				
							From(m)	To(m)	Interval(m)	Li2O (%)	Ta2O5 (ppm)
KVRC0226	258116	6958690	510	-68	42	285	122	124	2	1.1	114
							incl. 1m @ 1.6% Li2O and 112ppm Ta2O5 from 122m				
							133	135	2	0.6	172
							149	151	2	1.2	146
							165	177	12	1.4	102
							incl. 6m @ 1.9% Li2O and 97ppm Ta2O5 from 168m				
							201	203	2	0.8	103
							210	217	7	1.2	109
							incl. 1m @ 3.1% Li2O and 30ppm Ta2O5 from 211m and 1m @ 2% Li2O and 57ppm Ta2O5 from 214m				
							222	235	13	1.7	179
							incl. 3m @ 2% Li2O and 174ppm Ta2O5 from 223m and 4m @ 2.2% Li2O and 164ppm Ta2O5 from 228m				
							245	257	12	1.8	136
							incl. 5m @ 2.5% Li2O and 92ppm Ta2O5 from 245m				
							265	266	1	1.2	80
							270	280	10	1.1	111
							incl. 3m @ 1.9% Li2O and 117ppm Ta2O5 from 272m				
							KVRC0227	258310	6958672	510	-58
62	65	4	1.5	140							
incl. 3m @ 1.7% Li2O and 140ppm Ta2O5 from 62m											
70	71	1	1.1	118							
141	144	3	1.1	309							
incl. 1m @ 1.6% Li2O and 322ppm Ta2O5 from 142m											
156	159	3	1.8	248							
incl. 2m @ 2.2% Li2O and 242ppm Ta2O5 from 156m											
186	195	9	1.6	147							
incl. 3m @ 2.2% Li2O and 128ppm Ta2O5 from 187m											
204	221	17	1.7	136							
incl. 10m @ 2.1% Li2O and 126ppm Ta2O5 from 208m											
KVRC0228	258192	6958628	515	-79	43	298	185	196	11	1.4	115
							incl. 5m @ 2% Li2O and 145ppm Ta2O5 from 189m				
							210	27	17	1.8	124
							incl. 8m @ 2.4% Li2O and 120ppm Ta2O5 from 211m				
							236	282	45	1.7	116
incl. 23m @ 2.1% Li2O and 113ppm Ta2O5 from 239m and 3m @ 2% Li2O and 112ppm Ta2O5 from 264m											
KVRC0229	258715	6958131	525	-76	228	180	No significant assays				
KVRC0230	258720	6958137	525	-69	45	120	55	60	5	1.3	211
							incl. 2m @ 2% Li2O and 204ppm Ta2O5 from 57m				
							97	102	5	1.5	251
incl. 1m @ 2.3% Li2O and 469ppm Ta2O5 from 97m and 1m @ 2.5% Li2O and 115ppm Ta2O5 from 99m											
KVRC0231	258637	6958543	520	-90	358	225	36	43	7	0.8	260
							incl. 1m @ 2.2% Li2O and 215ppm Ta2O5 from 36m				
							86	89	3	1.1	207
							incl. 1m @ 1.8% Li2O and 230ppm Ta2O5 from 86m				
							106	111	5	1.2	103
							incl. 1m @ 2.1% Li2O and 137ppm Ta2O5 from 108m				
							117	122	5	1.5	114
							incl. 3m @ 1.8% Li2O and 118ppm Ta2O5 from 117m				
							126	128	2	1.2	122
							incl. 1m @ 1.7% Li2O and 168ppm Ta2O5 from 126m				
134	138	4	0.9	109							
incl. 1m @ 1.6% Li2O and 177ppm Ta2O5 from 136m											

Appendix 1 (cont.) – Kathleen Valley – Reverse Circulation Drill hole statistics

Hole_ID	East	North	RL	Dip	Azimuth	Depth (m)	Significant Li ₂ O (>0.4%) and Ta ₂ O ₅ (>50ppm) results				
							From(m)	To(m)	Interval(m)	Li ₂ O (%)	Ta ₂ O ₅ (ppm)
KVRC0232	258679	6958155	530	-79	222	170	119	144	25	1.4	181
							incl. 9m @ 1.8% Li ₂ O and 153ppm Ta ₂ O ₅ from 129m and 2m @ 1.9% Li ₂ O and 225ppm Ta ₂ O ₅ from 141m				
KVRC0233	258637	6958461	531	-87	167	230	54	57	3	0.8	264
							69	73	4	0.7	112
							94	97	3	1	123
							137	141	4	1.3	199
							incl. 1m @ 1.9% Li ₂ O and 219ppm Ta ₂ O ₅ from 140m				
							148	152	4	0.7	179
							174	179	5	1.3	111
							incl. 2m @ 2.7% Li ₂ O and 101ppm Ta ₂ O ₅ from 175m				
KVRC0234	258736	6958280	529	-54	41	172	86	93	7	0.8	224
							incl. 1m @ 1.8% Li ₂ O and 126ppm Ta ₂ O ₅ from 89m				
KVRC0235	258896	6958719	514	-66	42	192	37	42	5	1.2	133
							incl. 2m @ 2.1% Li ₂ O and 149ppm Ta ₂ O ₅ from 39m				
							46	48	2	1.2	141
							incl. 1m @ 1.8% Li ₂ O and 161ppm Ta ₂ O ₅ from 46m				
							87	89	2	1.1	112
KVRC0236	258630	6958386	540	-58	44	192	52	62	10	0.7	210
							incl. 1m @ 1.7% Li ₂ O and 140ppm Ta ₂ O ₅ from 61m				
							111	123	12	0.7	140
							incl. 1m @ 2.5% Li ₂ O and 118ppm Ta ₂ O ₅ from 121m				
KVRC0237	258960	6958500	518	-80	226	120	42	48	6	1.1	238
							incl. 1m @ 2.6% Li ₂ O and 169ppm Ta ₂ O ₅ from 44m				
							104	107	3	1.3	105
KVRC0238	258653	6958203	535	-71	222	228	155	217	62	1.2	171
							incl. 14m @ 1.9% Li ₂ O and 164ppm Ta ₂ O ₅ from 159m and 7m @ 2% Li ₂ O and 199ppm Ta ₂ O ₅ from 175m and 5m @ 1.9% Li ₂ O and 201ppm Ta ₂ O ₅ from 187m and 4m @ 1.9% Li ₂ O and 182ppm Ta ₂ O ₅ from 207m				
KVRC0239	258810	6958348	523	-54	47	154	45	50	5	0.9	182
							incl. 1m @ 2.1% Li ₂ O and 204ppm Ta ₂ O ₅ from 46m				
KVRC0240	259010	6958549	514	-66	44	78	133	134	1	2.3	153
							incl. 1m @ 2.2% Li ₂ O and 68ppm Ta ₂ O ₅ from 54m				
KVRC0241	259095	6958634	514	-56	42	84	61	63	2	1.2	243
KVRC0242	258773	6958382	526	-59	47	154	58	64	6	1	223
							incl. 1m @ 1.7% Li ₂ O and 222ppm Ta ₂ O ₅ from 61m				
KVRC0243	259180	6958719	514	-50	38	60	45	46	1	0.9	131
KVRC0244	258904	6958583	518	-80	225	120	24	25	1	2.1	332
							92	94	2	0.9	337
							54	56	2	1.9	324
KVRC0245	258672	6958425	537	-88	193	168	incl. 1m @ 2.6% Li ₂ O and 431ppm Ta ₂ O ₅ from 54m				
							72	77	5	1.5	219
							incl. 2m @ 2% Li ₂ O and 150ppm Ta ₂ O ₅ from 74m				
							153	159	6	1.3	195
KVRC0246	258147	6958575	510	-84	40	414	incl. 3m @ 2% Li ₂ O and 200ppm Ta ₂ O ₅ from 155m				
							364	370	6	0.9	193
							incl. 1m @ 2.1% Li ₂ O and 382ppm Ta ₂ O ₅ from 365m				
							377	411	34	1.4	88
					incl. 8m @ 2.5% Li ₂ O and 69ppm Ta ₂ O ₅ from 381m and 1m @ 2.3% Li ₂ O and 162ppm Ta ₂ O ₅ from 402m						

Appendix 1 (cont.) – Kathleen Valley – Reverse Circulation Drill hole statistics

Hole_ID	East	North	RL	Dip	Azimuth	Depth (m)	Significant Li2O (>0.4%) and Ta2O5 (>50ppm) results				
							From(m)	To(m)	Interval(m)	Li2O (%)	Ta2O5 (ppm)
KVRC0247	258740	6958352	531	-88	177	150	78	87	9	1.5	314
							incl. 2m @ 2.2% Li2O and 267ppm Ta2O5 from 80m				
							and 1m @ 3.3% Li2O and 93ppm Ta2O5 from 84m				
KVRC0248	258668	6958493	527	-56	40	168	57	61	4	1.4	304
							incl. 2m @ 2% Li2O and 291ppm Ta2O5 from 58m				
							97	99	2	1.2	295
							incl. 1m @ 1.8% Li2O and 378ppm Ta2O5 from 97m				
							103	104	1	1	166
							116	118	2	1	257
							121	124	3	1.5	142
incl. 1m @ 3% Li2O and 94ppm Ta2O5 from 122m											
KVRC0249	258088	6958659	514	-74	41	340	223	306	85	1.5	106
							incl. 2m @ 2.1% Li2O and 130ppm Ta2O5 from 224m				
							and 3m @ 2.1% Li2O and 93ppm Ta2O5 from 240m				
							and 4m @ 2.8% Li2O and 62ppm Ta2O5 from 266m				
KVRC0250	258039	6958747	511	-87	41	358	269	343	74	1.3	96
							incl. 4m @ 1.8% Li2O and 59ppm Ta2O5 from 286m				
							and 6m @ 2.1% Li2O and 113ppm Ta2O5 from 299m				
							and 3m @ 2.6% Li2O and 99ppm Ta2O5 from 319m				
KVRC0251	257938	6958787	513	-80	37	362	260	262	2	0.8	74
							265	277	12	1.2	89
							incl. 2m @ 1.9% Li2O and 108ppm Ta2O5 from 268m				
							and 1m @ 4.3% Li2O and 66ppm Ta2O5 from 275m				
							279	282	3	0.7	73
							284	285	1	1.7	208
							288	290	2	0.5	69
294	345	51	1.2	146							
incl. 13m @ 1.8% Li2O and 149ppm Ta2O5 from 302m											
KVRC0252	259040	6958719	514	-54	45	90	37	40	3	1.1	355
							incl. 1m @ 2% Li2O and 390ppm Ta2O5 from 37m				
KVRC0253	258955	6958634	514	-64	43	100	56	58	2	1.1	163
KVRC0254	258981	6958804	514	-55	43	100	38	44	6	1.4	136
							58	62	4	1.3	159
incl. 2m @ 1.8% Li2O and 141ppm Ta2O5 from 59m											
KVRC0255	258904	6958889	513	-49	45	50	26	27	1	0.8	67
KVRC0256	259125	6958804	514	-50	43	80	50	52	2	1.1	176
							incl. 1m @ 1.6% Li2O and 192ppm Ta2O5 from 50m				
KVRC0257	258238	6958671	512	-56	48	120	3	7	4	1.1	104
							incl. 1m @ 1.6% Li2O and 133ppm Ta2O5 from 4m				
							63	69	6	1.1	83
							72	74	2	1.2	93
							81	83	2	1.2	102
							incl. 1m @ 1.6% Li2O and 120ppm Ta2O5 from 81m				
							86	91	5	0.6	37
107	109	2	0.9	121							
KVRC0258	257977	6958836	506	-66	45	170	25	27	2	0.6	121
KVRC0259	258183	6958757	510	-50	47	80	60	64	4	1.4	121
							incl. 2m @ 1.8% Li2O and 133ppm Ta2O5 from 62m				
KVRC0260	258087	6958802	509	-79	42	150	85	90	5	1.1	124
							incl. 1m @ 1.7% Li2O and 117ppm Ta2O5 from 62m				
							118	120	2	1.3	168

Appendix 1 (cont.) – Kathleen Valley – Reverse Circulation Drill hole statistics

Hole_ID	East	North	RL	Dip	Azimuth	Depth (m)	Significant Li2O (>0.4%) and Ta2O5 (>50ppm) results				
							From(m)	To(m)	Interval(m)	Li2O (%)	Ta2O5 (ppm)
KVRC0261	258136	6958710	508	-61	44	160	100	102	2	1	92
							122	127	5	1.6	111
							incl. 4m @ 1.8% Li2O and 107ppm Ta2O5 from 123m				
							150	153	3	1.6	75
							incl. 2m @ 2% Li2O and 84ppm Ta2O5 from 150m				
KVRC0262	258025	6958889	505	-54	43	90	42	43	1	0.4	109
KVRC0263	258142	6958856	506	-71	45	96	40	41	1	1.1	140
							84	86	2	0.8	170
KVRC0264	257745	6959231	505	-55	46	324	230	239	9	1.1	26
							incl. 1m @ 3.7% Li2O and 14ppm Ta2O5 from 232m				
							294	310	16	1.9	139
							incl. 8m @ 2.2% Li2O and 124ppm Ta2O5 from 294m and 2m @ 2.3% Li2O and 84ppm Ta2O5 from 305m				
							incl. 1m @ 2.8% Li2O and 41ppm Ta2O5 from 221m and 4m @ 3.2% Li2O and 65ppm Ta2O5 from 223m				
KVRC0265	257699	6959157	505	-64	44	366	219	229	10	1.9	72
							incl. 1m @ 2.8% Li2O and 41ppm Ta2O5 from 221m and 4m @ 3.2% Li2O and 65ppm Ta2O5 from 223m				
							284	305	21	1.2	112
							incl. 4m @ 1.7% Li2O and 111ppm Ta2O5 from 293m				
							330	336	6	1.3	182
							incl. 2m @ 2% Li2O and 120ppm Ta2O5 from 330m				
							348	349	1	1.5	188
							353	355	2	1	101
KVRC0266	257653	6959101	505	-70	37	384	218	230	12	3.1	38
							incl. 9m @ 3.8% Li2O and 25ppm Ta2O5 from 219m				
							294	298	4	0.4	69
							304	307	3	0.8	67
							327	333	6	1.4	215
							incl. 2m @ 2.1% Li2O and 220ppm Ta2O5 from 327m				
							348	351	3	1.3	122
incl. 1m @ 1.9% Li2O and 131ppm Ta2O5 from 348m											
KVRC0267	257597	6959039	505	-71	46	90	Hole abandoned				
KVRC0268	258440	6959838	506	-85	110	339	171	178	7	1.1	154
							incl. 4m @ 1.5% Li2O and 151ppm Ta2O5 from 171m				
							320	329	9	1.2	114
incl. 3m @ 1.6% Li2O and 122ppm Ta2O5 from 320m											
KVRC0269	257535	6958975	505	-73	43	240	Hole abandoned				
KVRC0270	258296	6959564	508	-90	359	18	Hole abandoned				
KVRC0271	258335	6959607	508	-85	51	312	226	243	17	1.4	181
							incl. 6m @ 1.8% Li2O and 165ppm Ta2O5 from 227m				
KVRC0272	258548	6959667	507	-90	47	318	260	270	10	1.5	124
							incl. 5m @ 1.9% Li2O and 96ppm Ta2O5 from 261m				
KVRC0273	258692	6959805	507	-89	287	348	No significant assays				
KVRC0274	257754	6959450	506	-89	120	444	138	139	1	1.4	89
							256	259	3	0.9	371
							261	264	3	0.5	66
							267	283	16	1.3	107
							incl. 2m @ 1.6% Li2O and 137ppm Ta2O5 from 268m and 4m @ 1.8% Li2O and 113ppm Ta2O5 from 276m				
							355	359	4	0.5	90
KVRC0275	258480	6958165	554	-85	23	354	270	274	4	1.9	141
							276	278	2	1.5	118
							incl. 1m @ 1.8% Li2O and 93ppm Ta2O5 from 277m				
							282	285	3	1.2	142
incl. 1m @ 1.8% Li2O and 172ppm Ta2O5 from 282m											

Appendix 1 (cont.) – Kathleen Valley – Reverse Circulation Drill hole statistics

Hole_ID	East	North	RL	Dip	Azimuth	Depth (m)	Significant Li2O (>0.4%) and Ta2O5 (>50ppm) results				
							From(m)	To(m)	Interval(m)	Li2O (%)	Ta2O5 (ppm)
KVRC0276	257751	6959588	506	-88	71	366	306	310	4	1	45
							incl. 1m @ 2.7% Li2O and 402ppm Ta2O5 from 306m				
							320	324	4	0.7	180
KVRC0277	257892	6959586	506	-88	109	343	272	278	6	1.7	116
							incl. 4m @ 2.2% Li2O and 102ppm Ta2O5 from 273m				
							301	304	3	1.6	104
KVRC0278	258522	6958002	530	-68	45	300	239	244	5	1	127
KVRC0279	258347	6957879	514	-61	44	414	394	396	2	0.7	52
KVRC0280	258043	6959315	506	-55	221	406	20	25	5	1.4	220
							incl. 2m @ 2% Li2O and 135ppm Ta2O5 from 22m				
							209	220	11	2.5	21
							incl. 7m @ 3.1% Li2O and 23ppm Ta2O5 from 210m and 2m @ 2.6% Li2O and 21ppm Ta2O5 from 218m				
							276	285	9	0.9	83
							318	376	58	1.3	163
							incl. 12m @ 2.2% Li2O and 132ppm Ta2O5 from 318m and 6m @ 2.3% Li2O and 197ppm Ta2O5 from 355m				
							383	391	8	1.3	133
							incl. 2m @ 2.5% Li2O and 164ppm Ta2O5 from 383m				
KVRC0281	258223	6959344	507	-56	221	400	135	155	20	1.2	170
							incl. 2m @ 1.8% Li2O and 140ppm Ta2O5 from 146m				
							235	253	18	1.5	169
							incl. 3m @ 2.6% Li2O and 126ppm Ta2O5 from 236m and 7m @ 1.8% Li2O and 152ppm Ta2O5 from 243m				
							256	260	4	1.2	149
							280	282	2	1.1	133
							290	299	9	1	250
							incl. 3m @ 2.3% Li2O and 217ppm Ta2O5 from 291m				
							307	316	9	1.6	207
incl. 4m @ 2.1% Li2O and 225ppm Ta2O5 from 311m											
KVRC0282	258370	6959382	508	-74	217	316	60	66	6	1.5	92
							incl. 2m @ 2% Li2O and 67ppm Ta2O5 from 64m				
							170	204	34	1.7	183
							incl. 4m @ 1.9% Li2O and 133ppm Ta2O5 from 173m and 11m @ 2.1% Li2O and 203ppm Ta2O5 from 87m				
							208	210	2	1.2	195
incl. 1m @ 1.7% Li2O and 157ppm Ta2O5 from 208m											
KVRC0283	258143	6959006	505	-60	311	350	161	164	3	0.8	44
							incl. 1m @ 1.6% Li2O and 31ppm Ta2O5 from 162m				
							175	177	2	1.3	98
							230	235	5	1.6	164
							incl. 2m @ 2.5% Li2O and 276ppm Ta2O5 from 232m				
							242	251	9	1.2	133
							incl. 3m @ 2.2% Li2O and 180ppm Ta2O5 from 247m				
							258	276	18	1	157
							incl. 2m @ 1.8% Li2O and 118ppm Ta2O5 from 261m and 2m @ 1.9% Li2O and 209ppm Ta2O5 from 273m				
291	302	11	0.9	110							
incl. 1m @ 1.8% Li2O and 162ppm Ta2O5 from 299m											

Appendix 1 (cont.) – Kathleen Valley – Reverse Circulation Drill hole statistics

Hole_ID	East	North	RL	Dip	Azimuth	Depth (m)	Significant Li ₂ O (>0.4%) and Ta ₂ O ₅ (>50ppm) results				
							From(m)	To(m)	Interval(m)	Li ₂ O (%)	Ta ₂ O ₅ (ppm)
KVRC0284	258040	6958937	506	-54	306	400	107	112	5	0.8	51
							119	120	1	1.7	121
							203	214	11	1.5	37
							incl. 2m @ 1.8% Li₂O and 14ppm Ta₂O₅ from 203m				
							and 1m @ 2.5% Li₂O and 28ppm Ta₂O₅ from 209m				
							and 2m @ 2.7% Li₂O and 40ppm Ta₂O₅ from 212m				
							243	245	2	1.6	31
							incl. 1m @ 2.8% Li₂O and 32ppm Ta₂O₅ from 244m				
							264	273	9	1.3	206
							incl. 5m @ 1.7% Li₂O and 226ppm Ta₂O₅ from 267m				
							284	292	8	1.1	150
							incl. 1m @ 2.1% Li₂O and 182ppm Ta₂O₅ from 285m				
							and 2m @ 1.7% Li₂O and 155ppm Ta₂O₅ from 290m				
							295	319	21	1.4	180
							incl. 3m @ 2.5% Li₂O and 90ppm Ta₂O₅ from 295m				
							and 6m @ 1.8% Li₂O and 238ppm Ta₂O₅ from 300m				
							332	341	9	1.4	140
incl. 4m @ 1.8% Li₂O and 160ppm Ta₂O₅ from 334m											
360	363	2	1.4	110							
incl. 1m @ 1.8% Li₂O and 138ppm Ta₂O₅ from 361m											
KVRC0285	258552	6959484	505	-60	132	250	78	81	3	0.8	204
							88	94	6	1.1	248
							incl. 2m @ 1.6% Li₂O and 280ppm Ta₂O₅ from 90m				
							153	157	4	0.7	151
							incl. 1m @ 2% Li₂O and 106ppm Ta₂O₅ from 153m				
							172	177	5	0.9	156
incl. 1m @ 2% Li₂O and 141ppm Ta₂O₅ from 173m											
KVRC0286	258728	6959261	505	-60	314	250	4	10	6	1.2	288
							incl. 1m @ 2.3% Li₂O and 305ppm Ta₂O₅ from 4m				
							and 1m @ 1.9% Li₂O and 235ppm Ta₂O₅ from 7m				
							20	22	2	1	341
							70	81	11	1.4	168
							incl. 7m @ 1.8% Li₂O and 203ppm Ta₂O₅ from 71m				
							92	99	7	1.3	212
incl. 2m @ 2.3% Li₂O and 302ppm Ta₂O₅ from 94m											
201	205	4	0.6	96							
KVRC0287	257653	6959101	505	-72	133	399	253	296	43	3.1	56
							incl. 21m @ 3.8% Li₂O and 65ppm Ta₂O₅ from 272m				
							<i>(incl. 1m @ 5.7% Li₂O and 25ppm Ta₂O₅ from 276m)</i>				
							<i>(and 1m @ 5.0% Li₂O and 48ppm Ta₂O₅ from 283m)</i>				
							<i>(and 1m @ 5.2% Li₂O and 27ppm Ta₂O₅ from 320m)</i>				
308	324	16	2.6	56							
incl. 13m @ 3.1% Li₂O and 50ppm Ta₂O₅ from 308m											
351	360	9	0.5	101							
KVRC0288	258043	6959315	506	-80	226	330	148	153	5	1.5	48
							incl. 1m @ 2.2% Li₂O and 42ppm Ta₂O₅ from 151m				
							156	159	3	1.1	85
							incl. 1m @ 1.9% Li₂O and 99ppm Ta₂O₅ from 156m				
							167	169	2	2.2	117
							203	210	7	1.6	127
							incl. 3m @ 2.4% Li₂O and 114ppm Ta₂O₅ from 203m				
							232	242	10	1.8	118
							incl. 8m @ 2.1% Li₂O and 115ppm Ta₂O₅ from 233m				
							246	271	25	1.5	163
incl. 15m @ 1.9% Li₂O and 206ppm Ta₂O₅ from 255m											

Appendix 1 (cont.) – Kathleen Valley – Reverse Circulation Drill hole statistics

Hole_ID	East	North	RL	Dip	Azimuth	Depth (m)	Significant Li2O (>0.4%) and Ta2O5 (>50ppm) results				
							From(m)	To(m)	Interval(m)	Li2O (%)	Ta2O5 (ppm)
KVRC0289	257699	6959157	505	-70	132	382	182	197	15	2.4	21
							incl. 7m @ 3.4% Li2O and 12ppm Ta2O5 from 183m and 1m @ 3.0% Li2O and 38ppm Ta2O5 from 195m				
							307	311	4	1.4	105
							incl. 2m @ 2.0% Li2O and 139ppm Ta2O5 from 309m				
							331	337	6	1.2	115
							incl. 3m @ 1.7% Li2O and 172ppm Ta2O5 from 334m				
							358	360	2	1.1	101
							incl. 1m @ 1.8% Li2O and 105ppm Ta2O5 from 358m				
							362	364	2	1.2	76
KVRC0290	258456	6959573	507	-90	45	282	366	369	3	0.8	101
							192	198	6	1.4	146
							incl. 1m @ 3% Li2O and 163ppm Ta2O5 from 193m				
							216	230	14	1.1	161
							incl. 2m @ 2% Li2O and 165ppm Ta2O5 from 219m and 2m @ 2.1% Li2O and 103ppm Ta2O5 from 224m				
KVRC0291	258486	6959758	509	-89	28	312	154	161	7	1.3	138
							incl. 3m @ 1.9% Li2O and 153ppm Ta2O5 from 155m				
							292	300	8	0.9	113
KVRC0292	257740	6959227	505	-66	133	400	incl. 3m @ 1.5% Li2O and 105ppm Ta2O5 from 295m				
							132	135	3	1.1	129
							204	215	11	1.8	78
							incl. 6m @ 3.0% Li2O and 375ppm Ta2O5 from 295m				
							248	251	3	0.7	40
							277	291	14	1.1	90
							incl. 2m @ 1.9% Li2O and 99ppm Ta2O5 from 279m and 1m @ 2.0% Li2O and 145ppm Ta2O5 from 283m				
							299	305	6	1.5	176
							incl. 4m @ 1.9% Li2O and 198ppm Ta2O5 from 300m				
							315	319	4	1.4	214
KVRC0293	258480	6958165	554	-68	43	300	321	323	2	1.7	160
							incl. 1m @ 2.3% Li2O and 183ppm Ta2O5 from 322m				
							227	260	33	1.6	174
							incl. 13m @ 2.1% Li2O and 155ppm Ta2O5 from 227m and 4m @ 2.0% Li2O and 217ppm Ta2O5 from 242m				
KVRC0294	258384	6958210	550	-64	45	348	296	297	1	1.8	161
							282	295	13	1.2	130
							incl. 6m @ 1.8% Li2O and 141ppm Ta2O5 from 283m				
KVRC0295	258238	6959053	505	-61	349	304	300	324	24	1.6	143
							incl. 4m @ 2.2% Li2O and 138ppm Ta2O5 from 303m and 11m @ 1.9% Li2O and 98ppm Ta2O5 from 313m				
							129	137	8	1.1	85
							151	157	6	1.1	75
							incl. 2m @ 2.0% Li2O and 83ppm Ta2O5 from 153m				
KVRC0296	258043	6958931	506	-72	314	350	191	229	38	1.7	211
							incl. 27m @ 1.9% Li2O and 219ppm Ta2O5 from 199m				
							251	255	4	0.9	257
							93	95	2	1.1	179
							incl. 1m @ 1.8% Li2O and 222ppm Ta2O5 from 94m				
							174	184	10	1.5	26
							incl. 5m @ 2.1% Li2O and 31ppm Ta2O5 from 174m and 2m @ 1.8% Li2O and 16ppm Ta2O5 from 180m				
							215	263	47	1	128
incl. 3m @ 2.1% Li2O and 27ppm Ta2O5 from 215m and 1m @ 2.6% Li2O and 231ppm Ta2O5 from 245m and 6m @ 2.1% Li2O and 120ppm Ta2O5 from 248m											
272	273	1	1.1	0.5							
287	293	6	0.9	109							
incl. 1m @ 2.2% Li2O and 137ppm Ta2O5 from 288m											

Appendix 1 (cont.) – Kathleen Valley – Reverse Circulation Drill hole statistics

Hole_ID	East	North	RL	Dip	Azimuth	Depth (m)	Significant Li2O (>0.4%) and Ta2O5 (>50ppm) results				
							From(m)	To(m)	Interval(m)	Li2O (%)	Ta2O5 (ppm)
KVRC0297	258370	6959382	508	-60	134	250	53	61	8	1.1	168
							incl. 2m @ 1.8% Li2O and 248ppm Ta2O5 from 55m				
							133	137	4	1.1	184
							incl. 1m @ 1.8% Li2O and 227ppm Ta2O5 from 135m				
							151	153	2	0.8	117
							163	187	24	1.6	216
							incl. 6m @ 1.9% Li2O and 171ppm Ta2O5 from 163m and 4m @ 2.0% Li2O and 203ppm Ta2O5 from 170m and 1m @ 2.4% Li2O and 163ppm Ta2O5 from 176m and 3m @ 2.0% Li2O and 237ppm Ta2O5 from 181m				
							Assays pending				
							Assays pending				
KVRC0298	258238	6959053	505	-60	312	350	142	148	6	0.9	99
							incl. 1m @ 1.8% Li2O and 41ppm Ta2O5 from 143m				
							200	206	6	1.3	165
							incl. 1m @ 2.2% Li2O and 119ppm Ta2O5 from 201m and 2m @ 1.9% Li2O and 171ppm Ta2O5 from 203m				
							234	245	11	1.4	166
							incl. 7m @ 1.8% Li2O and 204ppm Ta2O5 from 237m				
							254	259	5	1.3	134
							incl. 1m @ 1.7% Li2O and 194ppm Ta2O5 from 256m				
							261	264	3	0.8	122
incl. 1m @ 1.6% Li2O and 188ppm Ta2O5 from 261m											
KVRC0299	258379	6959391	508	-52	225	300	71	83	12	1.1	133
							incl. 1m @ 1.8% Li2O and 176ppm Ta2O5 from 74m and 1m @ 1.8% Li2O and 132ppm Ta2O5 from 77m				
							212	248	36	1.6	270
							incl. 1m @ 0.3% Li2O and 2,558ppm Ta2O5 from 212m and 13m @ 1.9% Li2O and 148ppm Ta2O5 from 214m and 11m @ 2.0% Li2O and 194ppm Ta2O5 from 232m				
							264	272	8	0.7	132
							incl. 1m @ 1.8% Li2O and 211ppm Ta2O5 from 265m				
							Assays pending				
KVRC0301	257923	6958831	505	-75	314	418	115	132	17	1	159
							incl. 2m @ 1.7% Li2O and 137ppm Ta2O5 from 122m and 2m @ 1.6% Li2O and 207ppm Ta2O5 from 128m				
							146	150	4	1	106
							187	188	1	1	105
							277	282	5	1.4	28
							incl. 3m @ 2.1% Li2O and 20ppm Ta2O5 from 279m				
							304	309	5	1.1	99
							incl. 1m @ 2.6% Li2O and 27ppm Ta2O5 from 307m				
							314	320	6	2.4	97
							incl. 5m @ 2.8% Li2O and 99ppm Ta2O5 from 315m				
							323	332	9	0.1	987
							incl. 3m @ 0.1% Li2O and 1,723ppm Ta2O5 from 327m				
							340	345	5	1.7	58
							incl. 1m @ 4.2% Li2O and 16ppm Ta2O5 from 341m				
KVRC0302	258466	6959429	505	-60	134	250	22	29	7	1.4	161
							incl. 3m @ 1.8% Li2O and 156ppm Ta2O5 from 23m				
							129	137	8	1.7	240
							incl. 5m @ 1.9% Li2O and 211ppm Ta2O5 from 131m				
							143	144	1	1.2	174
							146	147	1	1.1	272
							155	164	9	1.6	209
incl. 3m @ 2.3% Li2O and 192ppm Ta2O5 from 156m											

Appendix 1 (cont.) – Kathleen Valley – Reverse Circulation Drill hole statistics

Hole_ID	East	North	RL	Dip	Azimuth	Depth (m)	Significant Li2O (>0.4%) and Ta2O5 (>50ppm) results				
							From(m)	To(m)	Interval(m)	Li2O (%)	Ta2O5 (ppm)
KVRC0303	257974	6958882	506	-54	316	406	148	151	3	1.3	103
							incl. 1m @ 1.9% Li2O and 81ppm Ta2O5 from 149m				
							168	177	9	1.3	127
							incl. 1m @ 2.1% Li2O and 91ppm Ta2O5 from 171m				
							218	231	13	1.5	57
							incl. 4m @ 3.5% Li2O and 281ppm Ta2O5 from 220m				
							303	324	21	1.1	129
							incl. 3m @ 1.8% Li2O and 200ppm Ta2O5 from 305m and 3m @ 2.2% Li2O and 146ppm Ta2O5 from 309m				
							361	374	13	1.4	126
							incl. 5m @ 2.1% Li2O and 145ppm Ta2O5 from 362m and 1m @ 2.8% Li2O and 134ppm Ta2O5 from 373m				
KVRC0304	257923	6958831	506	-59	312	436	378	380	2	1	144
							323	420	97	1.9	90
							incl. 36m @ 3.6% Li2O and 71ppm Ta2O5 from 324m (incl. 1m @ 5.6% Li2O and 33ppm Ta2O5 from 352m)				
KVRC0305	258575	6959198	505	-58	318	246	22	34	12	0.7	145
							112	129	17	1.5	258
							incl. 5m @ 2.2% Li2O and 226ppm Ta2O5 from 113m and 1m @ 2.4% Li2O and 264ppm Ta2O5 from 123m				
							138	143	5	1.2	178
							incl. 2m @ 1.7% Li2O and 236ppm Ta2O5 from 140m				
							155	170	15	0.8	203
incl. 1m @ 2.1% Li2O and 176ppm Ta2O5 from 159m											
KVRC0306	258113	6959377	508	-89	26	300	239	241	2	1	104
							115	125	10	1.6	66
							incl. 5m @ 2.5% Li2O and 46ppm Ta2O5 from 116m				
							196	199	3	1.8	98
							incl. 2m @ 2.4% Li2O and 79ppm Ta2O5 from 196m				
							218	234	16	1.9	158
							incl. 10m @ 2.3% Li2O and 128ppm Ta2O5 from 219m				
246	261	15	1.3	137							
incl. 2m @ 2.2% Li2O and 166ppm Ta2O5 from 248m and 2m @ 2.1% Li2O and 162ppm Ta2O5 from 256m											
KVRC0307	257753	6959341	505	-90	331	372	264	280	14	1.2	107
							incl. 2m @ 2.3% Li2O and 108ppm Ta2O5 from 265m and 3m @ 1.8% Li2O and 273ppm Ta2O5 from 276m				
							288	294	6	1.5	133
							incl. 4m @ 2.0% Li2O and 156ppm Ta2O5 from 290m				
							335	343	8	0.9	153
incl. 1m @ 1.6% Li2O and 268ppm Ta2O5 from 339m											
KVRC0308	257683	6959404	505	-89	129	334	268	272	4	1.6	194
							incl. 2m @ 1.9% Li2O and 212ppm Ta2O5 from 269m				
KVRC0309	257638	6959219	505	-89	145	378	Assays pending				
KVRC0310	257567	6959289	505	-90	54.47	372					
KVRC0311	257585	6959166	505	-90	264.89	400					
KVRC0312	257527	6959108	505	-89	79.61	394					
KVRC0313	257627	6959343	506	-89	101	312					
KVRC0314	257513	6959234	505	-90	9	400					
KVRC0315	257456	6959178	505	-90	190	406					

True widths estimated as follows:

Holes drilled towards NE (~045) and intersecting Kathleen's Corner lodes - true widths 85-100% of downhole width

Holes drilled towards NE (~045) and intersecting Mt Mann lodes - true widths 65-100% of downhole width

Holes drilled towards SW (~225) and intersecting Kathleen's Corner lodes - true widths 65-75% of downhole width

Holes drilled towards SW (~225) and intersecting Mt Mann lodes - true widths 30-50% of downhole width

Holes drilled on NW/SE lines - true widths 60-100% of downhole widths

Suffixes "A" and "B" denote re-entered holes

Appendix 2 – Kathleen Valley – Diamond Core Drill hole statistics

Hole_ID	East	North	RL	Dip	Azimuth	Depth (m)	Significant Li2O (>0.4%) and Ta2O5 (>50ppm) results				
							From(m)	To(m)	Interval(m)	Li2O (%)	Ta2O5 (ppm)
KVDD0001	258690	6959191	512	-55	39	141.2	39.05	41.24	2.19	2.1	291
							incl. 1m @ 2.5% Li2O and 289ppm Ta2O5 from 40m				
							47.07	49	1.93	2.7	258
							53	54.87	1.87	1.7	230
							incl. 0.87m @ 2.2% Li2O and 217ppm Ta2O5 from 54m				
							70.65	85.55	14.9	1.4	190
							incl. 4m @ 2.1% Li2O and 288ppm Ta2O5 from 72m				
							and 4m @ 1.8% Li2O and 178ppm Ta2O5 from 81m				
							102.26	103.71	1.45	1.4	336
							124	125	1	1	243
KVDD0002	258738	6959090	514	-55	45	156.4	14	16	2	1	452
							59.29	76	16.71	1.6	215
							incl. 3m @ 2.2% Li2O and 124ppm Ta2O5 from 63m				
							and 6m @ 2.3% Li2O and 241ppm Ta2O5 from 68m				
							80.48	83	2.52	1.7	153
							incl. 1.52m @ 2% Li2O and 110ppm Ta2O5 from 80.48m				
							122.19	123	0.81	1	238
							130	130.9	0.9	0.9	204
							72	87	15	1.4	233
							incl. 7m @ 2% Li2O and 212ppm Ta2O5 from 75m				
and 1m @ 1.9% Li2O and 116ppm Ta2O5 from 86m											
KVDD0003	258722	6958935	520	-55	41	159.2	134.06	141	6.94	1.5	148
							incl. 1m @ 2.1% Li2O and 74ppm Ta2O5 from 135m				
							and 2m @ 2.1% Li2O and 172ppm Ta2O5 from 137m				
							42	50.12	8.12	1.4	125
							incl. 2m @ 2.1% Li2O and 99ppm Ta2O5 from 46m				
KVDD0004	258444	6958521	521	-54	50	189.2	66.2	66.85	0.65	1.1	87
							70.22	76	5.78	1.5	106
							incl. 1.34m @ 1.9% Li2O and 98ppm Ta2O5 from 71m				
							and 2m @ 1.8% Li2O and 134ppm Ta2O5 from 74m				
							103.91	108	4.09	1.9	301
							115.75	117	1.25	0.6	82
							141	141.9	0.9	1.1	232
							162	170	8	1.5	82
							incl. 3m @ 2.1% Li2O and 81ppm Ta2O5 from 167m				
							173.8	178.5	4.7	1.3	119
KVDD0005	258528	6958434	531	-60	44	216.4	40	52.85	12.85	1.9	132
							incl. 8m @ 2.1% Li2O and 137ppm Ta2O5 from 44m				
							79	83	4	1.1	99
							102.04	103.83	1.79	1.4	337
							130.03	136	5.97	1.8	155
							165.42	170.44	5.02	1.3	138
							incl. 1.6m @ 2% Li2O and 148ppm Ta2O5 from 167m				
							181.98	191	9.02	1.5	160
							incl. 1.93m @ 1.9% Li2O and 103ppm Ta2O5 from 183m				
							and 2m @ 2.2% Li2O and 256ppm Ta2O5 from 188m				
KVDD0006	258621	6958311	545	-55	44	185.6	38.05	52	13.95	1.6	129
							incl. 7m @ 1.9% Li2O and 118ppm Ta2O5 from 43m				
							65.99	66.89	0.9	1.7	188
							95.16	100	4.84	1	196
							115	118	3	1.7	174

Appendix 2 (cont.) – Kathleen Valley – Diamond Core Drill hole statistics

Hole_ID	East	North	RL	Dip	Azimuth	Depth (m)	Significant Li2O (>0.4%) and Ta2O5 (>50ppm) results				
							From(m)	To(m)	Interval(m)	Li2O (%)	Ta2O5 (ppm)
KVDD0007	258569	6959079	520	-60	228	231.6	88.45	98.91	10.46	1.3	205
							incl. 5m @ 2% Li2O and 198ppm Ta2O5 from 88.45m				
							108.13	114.17	6.04	1.6	155
							incl. 4m @ 1.9% Li2O and 151ppm Ta2O5 from 108.13m				
							145.08	148.26	3.18	1.4	423
							156.75	163.85	7.1	1.5	165
							incl. 4.7m @ 1.8% Li2O and 193ppm Ta2O5 from 156.75m				
							165.73	169.7	3.97	1.3	159
							incl. 1.97m @ 2% Li2O and 158ppm Ta2O5 from 165.73m				
							184.23	186.35	2.12	1.1	184
							incl. 1m @ 1.8% Li2O and 245ppm Ta2O5 from 184.23m				
KVDD0008	258629	6958992	523	-48	223	153.2	188.65	191.5	2.85	2.4	140
							205.11	207.1	1.99	1.1	129
							217.76	218.76	1	1.2	154
							123.47	132.4	8.93	1.3	196
							incl. 1m @ 2% Li2O and 315ppm Ta2O5 from 123.47m and 1m @ 1.9% Li2O and 238ppm Ta2O5 from 125.47m and 0.93m @ 2.6% Li2O and 100ppm Ta2O5 from 129.47m				
KVDD0009	258696	6958909	521	-52	221	177.5	137.48	137.98	0.5	1.4	100
							39.1	43	3.9	1.4	448
							105.23	106.22	0.99	2	224
incl. 0.77m @ 2.4% Li2O and 123ppm Ta2O5 from 105.23m											
KVDD0010	258450	6958480	519	-64	46	189.1	113.5	120.1	6.6	0	338
							164.1	172.2	8.1	1.3	98
incl. 4.9m @ 1.8% Li2O and 107ppm Ta2O5 from 164.1m											
KVDD0011	258474	6958501	519	-60	48	180	181.39	185.39	4	1.8	107
							99.66	105.66	6	1	288
							incl. 2m @ 2.1% Li2O and 591ppm Ta2O5 from 100.66m				
							154.73	163.14	8.41	1.8	95
							incl. 6m @ 2% Li2O and 89ppm Ta2O5 from 156.48m				
KVDD0012	258401	6958622	513	-59	42	40.3	166.61	173.19	6.58	1.4	106
							incl. 2.83m @ 1.7% Li2O and 126ppm Ta2O5 from 169.28m				
							11	18.44	7.44	1.3	119
incl. 1m @ 1.8% Li2O and 123ppm Ta2O5 from 17m											
KVDD0013	258423	6958581	514	-60	44	46.6	21.91	24.9	2.99	1	172
							19	29	10	1.4	108
							incl. 5m @ 1.8% Li2O and 131ppm Ta2O5 from 22m				
							37.1	40.93	3.83	1	89
incl. 1m @ 1.7% Li2O and 170ppm Ta2O5 from 39m											
KVDD0014	258490	6958517	519	-55	44	41.6	13	14	1	1.2	137
							16.78	23	6.22	1.6	154
							incl. 3m @ 1.9% Li2O and 147ppm Ta2O5 from 19m				
							32.76	39.15	6.39	1.3	132
							incl. 1m @ 1.7% Li2O and 125ppm Ta2O5 from 34m and 2m @ 1.7% Li2O and 127ppm Ta2O5 from 36m				
KVDD0015	258498	6958473	522	-55	44	65.3	34.08	44.65	10.57	1.5	167
							incl. 8m @ 1.8% Li2O and 149ppm Ta2O5 from 35m				
							57	62	5	1.5	92
incl. 3m @ 1.8% Li2O and 100ppm Ta2O5 from 59m											
KVDD0016*	258500	6958406	527	-80	44	132.1	125.62	132.1	6.48	1.4	133
							incl. 2m @ 2.1% Li2O and 158ppm Ta2O5 from 126m				

Appendix 2 (cont.) – Kathleen Valley – Diamond Core Drill hole statistics

Hole_ID	East	North	RL	Dip	Azimuth	Depth (m)	Significant Li2O (>0.4%) and Ta2O5 (>50ppm) results				
							From(m)	To(m)	Interval(m)	Li2O (%)	Ta2O5 (ppm)
KVDD0017	258538	6958369	533	-80	44	160.6	104	129.86	25.86	2	155
							incl. 19m @ 2.2% Li2O and 160ppm Ta2O5 from 110m				
							151.05	157	5.95	1.3	120
KVDD0018	258593	6958355	542	-80	44	104	45	61.49	16.49	1.4	124
							incl. 8m @ 2% Li2O and 123ppm Ta2O5 from 48m				
							79.82	81.5	1.68	1.8	221
KVDD0019	258603	6958234	544	-70	44	165.3	113.8	128	14.2	1.5	192
							incl. 9.69m @ 1.9% Li2O and 170ppm Ta2O5 from 115.9m				
							132.52	134.98	2.46	1.9	185
KVDD0020	258696	6958248	534	-60	44	55.9	143.3	145.93	2.63	2	126
							incl. 4m @ 1.9% Li2O and 151ppm Ta2O5 from 33m				
							32.8	37.43	4.63	1.8	157
KVDD0021	258676	6958152	530	-75	44	108.4	44.2	54.7	10.5	1.4	205
							incl. 4m @ 1.7% Li2O and 184ppm Ta2O5 from 48m and 0.7m @ 2% Li2O and 123ppm Ta2O5 from 54m				
							80	92	12	1.6	196
KVDD0022	258204	6959605	510	-55	44	62.8	incl. 0.74m @ 2.2% Li2O and 79ppm Ta2O5 from 81m and 2.82m @ 2% Li2O and 117ppm Ta2O5 from 83m and 3m @ 2.2% Li2O and 186ppm Ta2O5 from 88m				
							93.49	95.98	2.49	0.6	109
							101	105	4	0.9	196
KVDD0023	258244	6959510	508	-55	44	61.3	32	34	2	1	165
							incl. 1m @ 1.6% Li2O and 183ppm Ta2O5 from 32m				
							53	58.6	5.6	1.5	106
KVDD0024	258291	6959409	508	-55	44	74.9	incl. 2m @ 1.9% Li2O and 125ppm Ta2O5 from 55m				
							46.2	51	4.8	0.9	143
							incl. 1m @ 1.7% Li2O and 68ppm Ta2O5 from 47m				
KVDD0025	258444	6959419	508	-50	44	40.8	66.01	72	5.99	1.3	150
							incl. 1.9m @ 2.1% Li2O and 216ppm Ta2O5 from 47m				
							33	38	5	1.1	162
KVDD0026	258544	6959179	511	-90	359	120.1	incl. 1m @ 1.9% Li2O and 187ppm Ta2O5 from 33m				
							51	56	5	1.4	103
							incl. 2m @ 2% Li2O and 107ppm Ta2O5 from 54m				
KVDD0027	258501	6959144	512	-90	359	133.1	84.54	92.67	8.13	1.8	259
							incl. 2.2m @ 1.9% Li2O and 245ppm Ta2O5 from 54m				
							96.11	98.73	2.62	2.1	300
KVDD0027	258501	6959144	512	-90	359	133.1	100.97	105.32	4.35	1.5	189
							incl. 1m @ 1.9% Li2O and 441ppm Ta2O5 from 70m				
							108.2	114.13	5.87	2	159
KVDD0027	258501	6959144	512	-90	359	133.1	58	60	2	1	141
							incl. 1.12m @ 2.4% Li2O and 299ppm Ta2O5 from 84.88m				
							69	72	3	1.1	304
KVDD0027	258501	6959144	512	-90	359	133.1	84.88	86.54	1.66	2.1	257
							incl. 4.81m @ 1.9% Li2O and 356ppm Ta2O5 from 91.19m				
							91.19	98.92	7.73	1.5	369
KVDD0027	258501	6959144	512	-90	359	133.1	109.62	112.99	3.37	1.9	317
							incl. 6m @ 1.9% Li2O and 257ppm Ta2O5 from 123m				
							121.49	131.52	10.03	1.5	245

Appendix 2 (cont.) – Kathleen Valley – Diamond Core Drill hole statistics

Hole_ID	East	North	RL	Dip	Azimuth	Depth (m)	Significant Li2O (>0.4%) and Ta2O5 (>50ppm) results				
							From(m)	To(m)	Interval(m)	Li2O (%)	Ta2O5 (ppm)
KVDD0028	258613	6959181	512	-90	359	109.5	16	24	8	0.9	100
							incl. 1m @ 1.8% Li2O and 170ppm Ta2O5 from 16m and 1m @ 2.1% Li2O and 82ppm Ta2O5 from 21m				
							62.41	70	7.59	1.6	248
							incl. 5m @ 2.1% Li2O and 269ppm Ta2O5 from 63m				
							80	86	6	1.5	239
							incl. 3m @ 2.2% Li2O and 310ppm Ta2O5 from 81m				
							92.04	94.37	2.33	0.7	127
							99.89	105.5	5.61	0.9	95
KVDD0029	258550	6959117	518	-90	359	109.5	incl. 1.11m @ 1.6% Li2O and 183ppm Ta2O5 from 103.89m				
							69.23	71.74	2.51	1.5	244
							incl. 1.77m @ 1.9% Li2O and 288ppm Ta2O5 from 69.23m				
							83.64	91.9	8.26	1.6	280
							incl. 5m @ 2.1% Li2O and 312ppm Ta2O5 from 85m				
KVDD0030	258701	6959198	512	-90	359	74.2	104.1	107.98	3.88	1.7	247
							incl. 2.98m @ 1.8% Li2O and 240ppm Ta2O5 from 105m				
							34.86	36.3	1.44	1.2	224
							40.97	45.72	4.75	2.1	231
							61.18	66	4.82	1.7	300
KVDD0031	258604	6959103	519	-90	359	124.6	incl. 1.96m @ 2.2% Li2O and 260ppm Ta2O5 from 61.18m and 0.59m @ 2.1% Li2O and 372ppm Ta2O5 from 63.41m				
							70.9	74.2	3.3	2.7	207
							incl. 3.14m @ 1.8% Li2O and 186ppm Ta2O5 from 100.86m				
							51.44	56.43	4.99	1.4	110
							incl. 1m @ 2% Li2O and 81ppm Ta2O5 from 108m and 0.4m @ 1.8% Li2O and 196ppm Ta2O5 from 110m				
							67.35	75	7.65	2.2	281
							incl. 6.65m @ 2.4% Li2O and 281ppm Ta2O5 from 67.35m				
							100.86	105.15	4.29	1.4	187
							106.89	110.4	3.51	1.4	131
							incl. 3.86m @ 1.7% Li2O and 205ppm Ta2O5 from 116.14m				
KVDD0032	258753	6959162	513	-90	359	75.1	114.41	114.75	0.34	1.4	248
							incl. 2.77m @ 2.3% Li2O and 214ppm Ta2O5 from 40m				
							17	20	3	0.6	103
							39	43	4	2	185
							incl. 3.81m @ 2% Li2O and 317ppm Ta2O5 from 53.19m				
							52.32	58.32	6	1.5	262
KVDD0033	258677	6959100	518	-90	359	94.65	incl. 2.69m @ 1.9% Li2O and 213ppm Ta2O5 from 64.31m				
							64.31	67.78	3.47	1.7	234
							31	35	4	0.7	252
							61.7	71	9.3	1.5	180
KVDD0034	258615	6959042	522	-90	273	130.6	incl. 5m @ 1.8% Li2O and 185ppm Ta2O5 from 63m				
							55	60	5	1	168
							incl. 2m @ 1.6% Li2O and 220ppm Ta2O5 from 56m				
							66	78.18	12.18	1.8	206
							incl. 10.03m @ 2% Li2O and 225ppm Ta2O5 from 67.6m				
							109	110.58	1.58	1.6	163
							incl. 1m @ 2% Li2O and 170ppm Ta2O5 from 109m				
							114.69	119.05	4.36	1.7	205
							incl. 1m @ 2.6% Li2O and 118ppm Ta2O5 from 115m and 1.05m @ 1.8% Li2O and 360ppm Ta2O5 from 118m				
							123	128.64	5.64	1.6	135
incl. 2m @ 1.9% Li2O and 152ppm Ta2O5 from 123m and 2m @ 1.8% Li2O and 106ppm Ta2O5 from 126m											

Appendix 2 (cont.) – Kathleen Valley – Diamond Core Drill hole statistics

Hole_ID	East	North	RL	Dip	Azimuth	Depth (m)	Significant Li2O (>0.4%) and Ta2O5 (>50ppm) results				
							From(m)	To(m)	Interval(m)	Li2O (%)	Ta2O5 (ppm)
KVDD0035	258800	6959155	510	-89	314	72.1	17.44	25.04	7.6	1.2	211
							incl. 2m @ 1.7% Li2O and 241ppm Ta2O5 from 21m				
							50	52.66	2.66	1.2	267
							58.93	64.69	5.76	1.5	208
							incl. 2m @ 2.6% Li2O and 196ppm Ta2O5 from 60m				
KVDD0036	258700	6959052	518	-90	359	87.1	68.2	80	11.8	1.6	216
							incl. 2m @ 2.2% Li2O and 108ppm Ta2O5 from 69m and 4m @ 2% Li2O and 314ppm Ta2O5 from 73m				
							54	57	3	1.4	288
KVDD0037	258795	6959077	512	-88	268	75.1	incl. 1m @ 2.2% Li2O and 439ppm Ta2O5 from 55m				
							58.96	71	12.04	1.5	179
							incl. 6.2m @ 2% Li2O and 196ppm Ta2O5 from 60.8m and 1m @ 2.4% Li2O and 337ppm Ta2O5 from 69m				
							71	74	3	1.8	201
KVDD0038	258660	6958947	524	-90	359	79	77	78	1	1	195
							22.7	29.51	6.81	1.1	139
KVDD0039	258855	6959059	511	-89	298	61.6	incl. 1.3m @ 2.2% Li2O and 244ppm Ta2O5 from 23.7m				
							43.96	46.01	2.05	1.5	137
							25	27	2	1.4	188
KVDD0040	258690	6958900	523	-89	144	120.1	incl. 1m @ 1.6% Li2O and 183ppm Ta2O5 from 26m				
							83.15	92	8.85	1.6	254
							incl. 7m @ 1.9% Li2O and 262ppm Ta2O5 from 84m				
							106	111.4	5.4	2.3	113
KVDD0041	258876	6959018	510	-90	321	56	19.6	24.2	4.6	1.2	170
							incl. 1m @ 1.6% Li2O and 110ppm Ta2O5 from 20m and 1.2m @ 1.6% Li2O and 181ppm Ta2O5 from 23m				
							47.74	52.2	4.46	1.5	112
							incl. 1m @ 1.7% Li2O and 111ppm Ta2O5 from 48m and 2.07m @ 1.8% Li2O and 125ppm Ta2O5 from 50.13m				
							14	20	6	1	195
KVDD0042	258717	6958858	522	-90	289	130.6	incl. 2m @ 2.2% Li2O and 403ppm Ta2O5 from 14m				
							77.96	89	11.04	1.9	265
							incl. 9.6m @ 2.1% Li2O and 284ppm Ta2O5 from 78.4m				
							110.24	115.79	5.55	1.4	199
							incl. 2m @ 1.8% Li2O and 246ppm Ta2O5 from 112m				
KVDD0043	257955	6958667	518	-85	49	498.8	408	433	25	1.5	86
							incl. 1m @ 3.1% Li2O and 42ppm Ta2O5 from 408m and 7m @ 2.7% Li2O and 70ppm Ta2O5 from 412m and 1m @ 2.7% Li2O and 161ppm Ta2O5 from 431m				
							498.3	498.8	0.5	1.3	18
							389.21	391	1.8	1.6	49
KVDD0044	258040	6958614	520	-84	53	457	394	397	3	1.2	54
							399	406	7	0.4	119
							410	414	4	0.5	86
							415.55	426	10.45	1.3	111
							incl. 3m @ 1.6% Li2O and 97ppm Ta2O5 from 418m and 1m @ 2.1% Li2O and 98ppm Ta2O5 from 425m				
							320.93	385	64.07	1.3	93
							incl. 9m @ 1.8% Li2O and 122ppm Ta2O5 from 342m and 10m @ 1.8% Li2O and 70ppm Ta2O5 from 362m and 4m @ 1.8% Li2O and 97ppm Ta2O5 from 379m				
397	409.09	12.09	1.6	137							
KVDD0045	258199	6958503	522	-83	43	462.6	incl. 4m @ 2.1% Li2O and 77ppm Ta2O5 from 403m				
							301	356	55	1.7	96
							incl. 6.2m @ 2.5% Li2O and 73ppm Ta2O5 from 301.8m and 13m @ 2.2% Li2O and 91ppm Ta2O5 from 312m and 5.6m @ 2.1% Li2O and 99ppm Ta2O5 from 331.5m and 9m @ 2.2% Li2O and 90ppm Ta2O5 from 339m				
							398	403	5	1.1	78
							incl. 2m @ 1.9% Li2O and 62ppm Ta2O5 from 400m				
							399	403	5	1.1	78
KVDD0046	258286	6958445	525	-84	43	430.2	incl. 2m @ 1.9% Li2O and 62ppm Ta2O5 from 400m				
							301	356	55	1.7	96
							incl. 6.2m @ 2.5% Li2O and 73ppm Ta2O5 from 301.8m and 13m @ 2.2% Li2O and 91ppm Ta2O5 from 312m and 5.6m @ 2.1% Li2O and 99ppm Ta2O5 from 331.5m and 9m @ 2.2% Li2O and 90ppm Ta2O5 from 339m				
							398	403	5	1.1	78
							incl. 2m @ 1.9% Li2O and 62ppm Ta2O5 from 400m				

Appendix 2 (cont.) – Kathleen Valley – Diamond Core Drill hole statistics

Hole_ID	East	North	RL	Dip	Azimuth	Depth (m)	Significant Li2O (>0.4%) and Ta2O5 (>50ppm) results									
							From(m)	To(m)	Interval(m)	Li2O (%)	Ta2O5 (ppm)					
KVDD0047	257869	6958726	511	-85	36	500.9	412	414.2	2.2	0.9	110					
							420.2	424.1	3.9	0.9	131					
							429	438	9	0.9	113					
							440	444	4	1.4	112					
							489	490.6	1.6	1.9	63					
KVDD0048	257535	6958975	505	-59	43	462.9	286.9	291	4.1	1.8	71					
							incl. 2.1m @ 2.2% Li2O and 80ppm Ta2O5 from 286.9m									
							299	312.1	13.1	3.1	54					
							incl. 10.4m @ 3.8% Li2O and 37ppm Ta2O5 from 299.9m									
							<i>(incl. 1m @ 5.4% Li2O and 19ppm Ta2O5 from 305m)</i>									
							<i>(and 1m @ 5.9% Li2O and 12ppm Ta2O5 from 307m)</i>									
							<i>(and 1m @ 5.2% Li2O and 12ppm Ta2O5 from 309m)</i>									
							325.1	326.3	1.2	1.6	406					
							incl. 0.9m @ 2% Li2O and 491ppm Ta2O5 from 325.1m									
							349.1	351.2	3.1	0.9	134					
							359.7	360.2	0.5	3.1	46					
							381.7	389	7.3	0.9	121					
							incl. 0.7m @ 1.8% Li2O and 214ppm Ta2O5 from 385.3m									
							398.6	401	2.4	1.5	164					
							399	400	1	2.1	149					
411.4	418	6.6	1.1	94												
incl. 2m @ 1.7% Li2O and 99ppm Ta2O5 from 412m																
and 1m @ 1.5% Li2O and 125ppm Ta2O5 from 416m																
KVDD0049	257535	6958975	505	-74	44	481.1	154	155.8	1.8	1.1	167					
							incl. 1m @ 1.6% Li2O and 168ppm Ta2O5 from 154m									
							309.2	316.5	7.3	1.6	122					
							incl. 4m @ 2.4% Li2O and 148ppm Ta2O5 from 310m									
							329	332	3	2.2	155					
incl. 2m @ 2.9% Li2O and 169ppm Ta2O5 from 329m																
KVDD0050	258384	6958210	550	-79	51	424.2	395	398	3	1	104					
							incl. 10.7m @ 2.2% Li2O and 141ppm Ta2O5 from 301.8m									
KVDD0051	258128	6958434	524	-79	43	348	and 11.7m @ 2.3% Li2O and 114ppm Ta2O5 from 318.3m									
							300.6	340	39.4	1.7	129					
KVDD0052	258234	6958396	526	-80	41	348	397	425.8	28.8	1.3	75					
							incl. 2.2m @ 2.3% Li2O and 153ppm Ta2O5 from 400m									
KVGT001	258100	6958650	512	-60	44	240.8	and 9.3m @ 2% Li2O and 76ppm Ta2O5 from 410.7m									
							355.1	395	39.9	1.7	93					
KVGT002A	258300	6958500	517	-55	223	150.7	incl. 6m @ 1.9% Li2O and 88ppm Ta2O5 from 356m									
							and 19m @ 2.2% Li2O and 97ppm Ta2O5 from 367m									
KVGT003	258450	6958650	512	-60	268	120.7	Geotech only hole - no assaying completed									
												KVGT004	259100	6959200	511	-59
16.4	20.5	4.1	1.7	234												
KVGT005	258600	6959200	511	-59	332	228.7						98.7	101.6	2.9	1.3	188
												incl. 1.2m @ 2.6% Li2O and 417ppm Ta2O5 from 99.1m				
KVGT006	258600	6959200	511	-59	332	228.7	110	127	17	1.5	229					
							incl. 9m @ 2.1% Li2O and 229ppm Ta2O5 from 112m									
KVGT006	258600	6959200	511	-59	332	228.7	131	143.7	12.7	1.1	162					
							incl. 3.7m @ 2% Li2O and 228ppm Ta2O5 from 140m									
KVGT006	258600	6959200	511	-59	332	228.7	154.2	158.1	3.9	1.2	268					

Appendix 2 (cont.) – Kathleen Valley – Diamond Core Drill hole statistics

Hole_ID	East	North	RL	Dip	Azimuth	Depth (m)	Significant Li2O (>0.4%) and Ta2O5 (>50ppm) results				
							From(m)	To(m)	Interval(m)	Li2O (%)	Ta2O5 (ppm)
KVGT007	258263.6	6959355	508	-50	167	300.7	113.7	125.5	11.8	2	161
							incl. 9m @ 2.3% Li2O and 163ppm Ta2O5 from 114m				
							199.3	233	33.7	2	252
							238.5	239.1	0.6	1.3	198
							242.2	246.1	3.9	1.1	249
							270	271.6	1.6	1.2	248
KVGT008	258304	6959363	508	-50	169	297.7	100	110.2	10.2	1.6	118
							incl. 6m @ 2% Li2O and 96ppm Ta2O5 from 103m				
							189.7	203.4	13.7	1.6	246
							incl. 9m @ 1.9% Li2O and 226ppm Ta2O5 from 194m				
							205	205.7	0.7	1.9	179
							206.9	207.1	0.2	1	491
							209.8	236.9	27.1	1.4	258
							incl. 2.3m @ 1.7% Li2O and 428ppm Ta2O5 from 209.8m				
							and 3.6m @ 1.7% Li2O and 337ppm Ta2O5 from 212.4m				
							and 2m @ 1.7% Li2O and 208ppm Ta2O5 from 222m				
and 7m @ 1.7% Li2O and 231ppm Ta2O5 from 229m											
KVGT009	258355	6959373	508	-49	157	246.6	83.6	93	9.4	1.5	177
							incl. 2m @ 2.1% Li2O and 159ppm Ta2O5 from 90m				
							170.4	180.3	9.9	1.9	207
							183.2	203	19.8	1.5	219
							incl. 4.9m @ 1.8% Li2O and 242ppm Ta2O5 from 183.2m				
							and 3m @ 2.2% Li2O and 288ppm Ta2O5 from 194m				
and 3.6m @ 2.2% Li2O and 122ppm Ta2O5 from 199.4m											
KVDD0053	258303	6958270	540	-80	43	415.1	222.1	224	1.9	0.9	146
							337.2	374	36.8	1.7	115
							incl. 4m @ 2.1% Li2O and 70ppm Ta2O5 from 342m				
and 10m @ 1.9% Li2O and 116ppm Ta2O5 from 348m											
and 11m @ 1.9% Li2O and 94ppm Ta2O5 from 362m											
KVDD0054	258292	6957962	522	-83	50	436.1	376.1	401.3	25.2	1.3	131
							incl. 2.9m @ 2.1% Li2O and 135ppm Ta2O5 from 376.1m				
							and 4m @ 2.4% Li2O and 100ppm Ta2O5 from 393m				
and 2m @ 2.7% Li2O and 100ppm Ta2O5 from 399m											
KVDD0055	258094	6957614	504	-55	44	269	Hole abandoned				
KVDD0056	258206	6957875	513	-73	222	348	607	621	14	1.6	85
							incl. 7.9m @ 2.1% Li2O and 73ppm Ta2O5 from 609m				
KVDD0057	258067	6958370	516	-87	37	382	431.5	439	7.5	1.5	87
							incl. 3.7m @ 1.8% Li2O and 86ppm Ta2O5 from 432m				
							443.5	458.9	15.4	1.5	94
							incl. 5m @ 2.3% Li2O and 111ppm Ta2O5 from 448m				
							and 0.9m @ 3% Li2O and 122ppm Ta2O5 from 458m				
KVDD0058	258030	6958464	518	-84	42	342	461.6	461.9	0.3	6.8	273
							431.6	435.6	4	0.6	76
							438.8	460	21.2	1.3	92
							incl. 3.8m @ 2.2% Li2O and 89ppm Ta2O5 from 440.2m				
and 3m @ 2.1% Li2O and 90ppm Ta2O5 from 447m											
KVDD0059	258246	6958064	527	-87	22	460	389	389.3	0.3	1.5	105
KVDD0060	257933	6958506	517	-79	46	544.4	452.4	453.5	1.1	2.4	109
							462	464	2	0.9	129
							465.8	472.4	6.6	0.8	100
							incl. 2m @ 1.5% Li2O and 113ppm Ta2O5 from 470m				
							475.7	476.5	0.8	1.4	121

Appendix 2 (cont.) – Kathleen Valley – Diamond Core Drill hole statistics

Hole_ID	East	North	RL	Dip	Azimuth	Depth (m)	Significant Li2O (>0.4%) and Ta2O5 (>50ppm) results				
							From(m)	To(m)	Interval(m)	Li2O (%)	Ta2O5 (ppm)
KVDD0061	258192	6958168	522	-86	44	466.9	402	435.8	33.8	1.8	83
							incl. 8.5m @ 2.5% Li2O and 67ppm Ta2O5 from 405.5m and 7m @ 2% Li2O and 71ppm Ta2O5 from 416m and 2.3m @ 2.4% Li2O and 97ppm Ta2O5 from 426m and 4.8m @ 2% Li2O and 100ppm Ta2O5 from 431m				
							419.5	450	30.5	1.4	70
							incl. 3m @ 1.8% Li2O and 70ppm Ta2O5 from 428m and 5m @ 2.6% Li2O and 106ppm Ta2O5 from 433m and 5m @ 1.7% Li2O and 86ppm Ta2O5 from 444m				
							369	378	9	0.6	137
KVDD0062	258126	6958295	514	-86	29	487.1	381	411	30	1.2	112
							incl. 1.2m @ 2.4% Li2O and 93ppm Ta2O5 from 386.8m and 1.5m @ 2.1% Li2O and 136ppm Ta2O5 from 401m and 1.3m @ 1.7% Li2O and 129ppm Ta2O5 from 408m				
							421	440.2	19.2	1.6	120
							incl. 8m @ 1.8% Li2O and 125ppm Ta2O5 from 424m and 2m @ 2.3% Li2O and 72ppm Ta2O5 from 436m				
							331.6	357.9	26.3	1.2	150
KVDD0063	258039	6958626	520	-75	42	474.8	incl. 3m @ 2.3% Li2O and 117ppm Ta2O5 from 339m and 2m @ 2.1% Li2O and 130ppm Ta2O5 from 344m and 6m @ 1.7% Li2O and 96ppm Ta2O5 from 347m				
							363.2	387.8	24.6	1.8	112
							incl. 9m @ 2.3% Li2O and 117ppm Ta2O5 from 363.2m and 2.8m @ 2.4% Li2O and 118ppm Ta2O5 from 375m and 2.9m @ 2.1% Li2O and 69ppm Ta2O5 from 383.1m				
							266	291	25	1.7	86
							incl. 2.4m @ 2.3% Li2O and 117ppm Ta2O5 from 270m and 6m @ 2.7% Li2O and 50ppm Ta2O5 from 274m and 5.7m @ 2.0% Li2O and 101ppm Ta2O5 from 284.3m				
KVDD0064	258330	6958002	535	-72	41	391.2	297	328	31	1.6	95
							incl. 2m @ 2.3% Li2O and 96ppm Ta2O5 from 304m and 11.4m @ 2.0% Li2O and 87ppm Ta2O5 from 309.6m and 3.8m @ 2.1% Li2O and 88ppm Ta2O5 from 324m				
							334	359.8	25.8	1.7	142
							incl. 20m @ 2.0% Li2O and 145ppm Ta2O5 from 336m				
							415	445.9	30.9	1.5	88
KVDD0065	258250	6958062	527	-66	45	430	incl. 3.9m @ 2.7% Li2O and 101ppm Ta2O5 from 415m and 0.7m @ 3.5% Li2O and 18ppm Ta2O5 from 422m and 5m @ 2.3% Li2O and 148ppm Ta2O5 from 426m and 3m @ 2.0% Li2O and 110ppm Ta2O5 from 432m				
							415	443.8	28.8	1.1	69
							incl. 3m @ 2.1% Li2O and 93ppm Ta2O5 from 428m and 1m @ 2.1% Li2O and 59ppm Ta2O5 from 434m and 1.8m @ 2.1% Li2O and 108ppm Ta2O5 from 442m				
							381.8	417	35.2	1.7	97
							incl. 12.1m @ 2.2% Li2O and 98ppm Ta2O5 from 381.8m and 13.3m @ 2.0% Li2O and 85ppm Ta2O5 from 395.3m				
KVDD0066	258152	6958580	516	-74	43	440.4	398.1	429.4	31.3	1.6	95
							incl. 2.4m @ 2.8% Li2O and 146ppm Ta2O5 from 398.1m and 2.9m @ 3.1% Li2O and 94ppm Ta2O5 from 402.2m and 4m @ 1.9% Li2O and 92ppm Ta2O5 from 408m and 5m @ 2.1% Li2O and 100ppm Ta2O5 from 420m and 1.7m @ 2.6% Li2O and 154ppm Ta2O5 from 427.3m				
							415	443.8	28.8	1.1	69
							incl. 3m @ 2.1% Li2O and 93ppm Ta2O5 from 428m and 1m @ 2.1% Li2O and 59ppm Ta2O5 from 434m and 1.8m @ 2.1% Li2O and 108ppm Ta2O5 from 442m				
							381.8	417	35.2	1.7	97
KVDD0067	258075	6958378	516	-77	42	487.2	incl. 12.1m @ 2.2% Li2O and 98ppm Ta2O5 from 381.8m and 13.3m @ 2.0% Li2O and 85ppm Ta2O5 from 395.3m				
							398.1	429.4	31.3	1.6	95
							incl. 2.4m @ 2.8% Li2O and 146ppm Ta2O5 from 398.1m and 2.9m @ 3.1% Li2O and 94ppm Ta2O5 from 402.2m and 4m @ 1.9% Li2O and 92ppm Ta2O5 from 408m and 5m @ 2.1% Li2O and 100ppm Ta2O5 from 420m and 1.7m @ 2.6% Li2O and 154ppm Ta2O5 from 427.3m				
							415	443.8	28.8	1.1	69
							incl. 3m @ 2.1% Li2O and 93ppm Ta2O5 from 428m and 1m @ 2.1% Li2O and 59ppm Ta2O5 from 434m and 1.8m @ 2.1% Li2O and 108ppm Ta2O5 from 442m				
KVDD0068	258038	6958473	518	-74	46	488.1	381.8	417	35.2	1.7	97
							incl. 12.1m @ 2.2% Li2O and 98ppm Ta2O5 from 381.8m and 13.3m @ 2.0% Li2O and 85ppm Ta2O5 from 395.3m				
							398.1	429.4	31.3	1.6	95
							incl. 2.4m @ 2.8% Li2O and 146ppm Ta2O5 from 398.1m and 2.9m @ 3.1% Li2O and 94ppm Ta2O5 from 402.2m and 4m @ 1.9% Li2O and 92ppm Ta2O5 from 408m and 5m @ 2.1% Li2O and 100ppm Ta2O5 from 420m and 1.7m @ 2.6% Li2O and 154ppm Ta2O5 from 427.3m				
							415	443.8	28.8	1.1	69
KVDD0069	258199	6958175	522	-73	46	445.1	incl. 12.1m @ 2.2% Li2O and 98ppm Ta2O5 from 381.8m and 13.3m @ 2.0% Li2O and 85ppm Ta2O5 from 395.3m				
							398.1	429.4	31.3	1.6	95
							incl. 2.4m @ 2.8% Li2O and 146ppm Ta2O5 from 398.1m and 2.9m @ 3.1% Li2O and 94ppm Ta2O5 from 402.2m and 4m @ 1.9% Li2O and 92ppm Ta2O5 from 408m and 5m @ 2.1% Li2O and 100ppm Ta2O5 from 420m and 1.7m @ 2.6% Li2O and 154ppm Ta2O5 from 427.3m				
							415	443.8	28.8	1.1	69
							incl. 3m @ 2.1% Li2O and 93ppm Ta2O5 from 428m and 1m @ 2.1% Li2O and 59ppm Ta2O5 from 434m and 1.8m @ 2.1% Li2O and 108ppm Ta2O5 from 442m				
KVDD0070	258134	6958298	515	-73	39	472.1	381.8	417	35.2	1.7	97
							incl. 12.1m @ 2.2% Li2O and 98ppm Ta2O5 from 381.8m and 13.3m @ 2.0% Li2O and 85ppm Ta2O5 from 395.3m				
							398.1	429.4	31.3	1.6	95
							incl. 2.4m @ 2.8% Li2O and 146ppm Ta2O5 from 398.1m and 2.9m @ 3.1% Li2O and 94ppm Ta2O5 from 402.2m and 4m @ 1.9% Li2O and 92ppm Ta2O5 from 408m and 5m @ 2.1% Li2O and 100ppm Ta2O5 from 420m and 1.7m @ 2.6% Li2O and 154ppm Ta2O5 from 427.3m				
							415	443.8	28.8	1.1	69

Appendix 2 (cont.) – Kathleen Valley – Diamond Core Drill hole statistics

Hole_ID	East	North	RL	Dip	Azimuth	Depth (m)	Significant Li2O (>0.4%) and Ta2O5 (>50ppm) results				
							From(m)	To(m)	Interval(m)	Li2O (%)	Ta2O5 (ppm)
KVDD0071	257590	6959030	505	-72	131	434.4	322	352.1	30.1	2.8	118
							incl. 20.2m @ 3.8% Li2O and 122ppm Ta2O5 from 327m				
							361.1	364	2.9	0.6	114
KVDD0072	257869	6958784	506	-78	309	491.3	393.1	413	19.9	2.6	87
							incl. 12.9m @ 3.6% Li2O and 57ppm Ta2O5 from 393.8m				
KVDD0073	258192	6958168	522	-64	225	351.3	Hole abandoned				
KVDD0073A	258192	6958168	522	-64	225	619.6	549.4	563	13.6	1.6	66
							incl. 2.4m @ 2.0% Li2O and 71ppm Ta2O5 from 552.6m				
							and 2.8m @ 2.8% Li2O and 96ppm Ta2O5 from 557m				
							576.2	581.2	5	1.5	102
							incl. 1.6m @ 2.2% Li2O and 105ppm Ta2O5 from 577.3m				
and 1.6m @ 2.1% Li2O and 98ppm Ta2O5 from 579.6m											
KVDD0074	258067	6958370	516	-70	222	613	506.5	509	2.5	2.1	25
							incl. 1m @ 4.1% Li2O and 17ppm Ta2O5 from 506.5m				
							514	515.9	1.9	1.5	73
							incl. 0.6m @ 2.8% Li2O and 50ppm Ta2O5 from 515.3m				
							525.2	537.3	12.1	1.5	90
incl. 1.8m @ 2.2% Li2O and 101ppm Ta2O5 from 525.2m											
and 4m @ 1.9% Li2O and 87ppm Ta2O5 from 530m											
KVDD0075	257869	6958784	506	-60	313	528.9	400.3	418.6	18.3	1.2	93
							incl. 2.8m @ 1.9% Li2O and 90ppm Ta2O5 from 405.6m				
							and 1.2m @ 4.9% Li2O and 100ppm Ta2O5 from 410.1m				
KVGTO10	258517	6959472	508	-79	50	219.9	176.3	186.5	10.2	1.1	175
							incl. 2.2m @ 2.2% Li2O and 143ppm Ta2O5 from 177.8m				
							188.1	193.2	5.1	1.1	125
incl. 1m @ 2.0% Li2O and 136ppm Ta2O5 from 190m											
KVGTO11	258224	6959344	507	-78	225	333.8	108.1	115	6.9	1	157
							200.3	233.7	33.4	1.8	169
							incl. 9.5m @ 2.3% Li2O and 139ppm Ta2O5 from 201m				
							and 6m @ 2.4% Li2O and 221ppm Ta2O5 from 222m				
incl. 4m @ 2.0% Li2O and 305ppm Ta2O5 from 244m											
KVGTO12A	258245	6959511	507	-80	43	300	53.3	56.2	5.9	0.9	111
							166.7	172	5.3	1.3	157
							incl. 3m @ 1.8% Li2O and 154ppm Ta2O5 from 167m				
							216.6	241	24.4	1.4	173
							incl. 9m @ 2.0% Li2O and 175ppm Ta2O5 from 222m				
and 2m @ 2.0% Li2O and 227ppm Ta2O5 from 234m											

True widths estimated as follows:

Holes drilled towards NE (~045) and intersecting Kathleen's Corner lodes - true widths 85-100% of downhole width

Holes drilled towards NE (~045) and intersecting Mt Mann lodes - true widths 65-100% of downhole width

Holes drilled towards SW (~225) and intersecting Kathleen's Corner lodes - true widths 65-75% of downhole width

Holes drilled towards SW (~225) and intersecting Mt Mann lodes - true widths 30-50% of downhole width

Holes drilled on NW/SE lines - true widths 60-100% of downhole widths

Appendix 3 – Kathleen Valley – JORC Code 2012 Table 1 Criteria

The table below summarises the assessment and reporting criteria used for the Kathleen’s Corner, Mt Mann deposits and Kathleen Valley Lithium Project Mineral Resource estimate and reflects the guidelines in Table 1 of *The Australasian Code for the Reporting of Exploration Results, Mineral Resources and Ore Reserves* (the JORC Code, 2012).

Section 1 Sampling Techniques and Data

Criteria	JORC Code explanation	Commentary
Sampling techniques	<i>Nature and quality of sampling (eg cut channels, random chips, or specific specialised industry standard measurement tools appropriate to the minerals under investigation, such as down hole gamma sondes, or handheld XRF instruments, etc). These examples should not be taken as limiting the broad meaning of sampling.</i>	<ul style="list-style-type: none"> Sub-surface samples have been collected by reverse circulation (RC) and diamond core drilling techniques (see below). Drillholes are oriented perpendicular to the interpreted strike of the mineralised trend except in rare occasions where limited access necessitates otherwise.
	<p><i>Include reference to measures taken to ensure sample representivity and the appropriate calibration of any measurement tools or systems used.</i></p> <p><i>Aspects of the determination of mineralisation that are Material to the Public Report.</i></p> <p><i>In cases where ‘industry standard’ work has been done this would be relatively simple (eg ‘reverse circulation drilling was used to obtain 1 m samples from which 3 kg was pulverised to produce a 30 g charge for fire assay’). In other cases more explanation may be required, such as where there is coarse gold that has inherent sampling problems. Unusual commodities or mineralisation types (eg submarine nodules) may warrant disclosure of detailed information.</i></p>	<ul style="list-style-type: none"> RC samples are collected by the metre from the drill rig cyclone as two 1 m cone split samples in calico bags and a bulk sample in plastic mining bags. The 1 m samples from the cyclone are retained for check analysis. Only samples of pegmatite and adjacent wall rock (~4 m) are collected for assay. Diamond core has been sampled in intervals of ~ 1 m (up to 1.18 m) where possible, otherwise intervals less than 1 m have been selected based on geological boundaries. Geological boundaries have not been crossed by sample intervals.
Drilling techniques	<i>Drill type (eg core, reverse circulation, open-hole hammer, rotary air blast, auger, Bangka, sonic, etc) and details (eg core diameter, triple or standard tube, depth of diamond tails, face-sampling bit or other type, whether core is oriented and if so, by what method, etc).</i>	<p>Drilling techniques used at Kathleen Valley comprise:</p> <ul style="list-style-type: none"> Reverse Circulation (RC/5.5”) with a face sampling hammer NQ Diamond Core, standard tube to a depth of ~450 m. HQ Diamond Core, standard tube to a depth of ~200-250 m. PQ Diamond Core, standard tube to a depth of ~200m. Diamond core holes drilled directly from surface or from bottom of RC precollars. Core orientation was provided by an ACT REFLEX (ACT II RD) tool.
Drill sample recovery	<i>Method of recording and assessing core and chip sample recoveries and results assessed.</i>	<ul style="list-style-type: none"> Sample recoveries are estimated for RC by correlating sample heights in the green mining bag to estimate a recovery for each metre. For diamond core the recovery is measured and recorded for every metre.
	<i>Measures taken to maximise sample recovery and ensure representative nature of the samples.</i>	<ul style="list-style-type: none"> RC drill collars are sealed to prevent sample loss and holes are normally drilled dry to prevent poor recoveries and contamination caused by water ingress. Wet intervals are noted in case of unusual results. For diamond core loss, core blocks have been inserted in sections where core loss has occurred. This has then been written on the block and recorded during the logging process and with detailed photography of dry and wet core.
	<i>Whether a relationship exists between sample recovery and grade and whether sample bias may have occurred due to preferential loss/gain of fine/coarse material.</i>	<ul style="list-style-type: none"> It has been demonstrated that no relationship exists between sample recovery and grade. No grade bias was observed with sample size variation.
Logging	<i>Whether core and chip samples have been geologically and geotechnically logged to a level of detail to support appropriate Mineral Resource</i>	<ul style="list-style-type: none"> All RC drillholes are logged on 1 m intervals and the following observations recorded: <ul style="list-style-type: none"> Recovery, quality (i.e. degree of contamination), wet/dry, hardness, colour, grainsize, texture,

Criteria	JORC Code explanation	Commentary
	<i>estimation, mining studies and metallurgical studies.</i>	<p>mineralogy, lithology, structure type and intensity, pegmatite and vein type and %, lithium mineralogy and %, alteration assemblage, UV fluorescence.</p> <ul style="list-style-type: none"> Diamond core is logged in its entirety as per detailed geological description listed above. Geotechnical logging has been completed for the entire hole.
	<i>Whether logging is qualitative or quantitative in nature. Core (or costean, channel, etc) photography.</i>	<ul style="list-style-type: none"> Logging is quantitative, based on visual field estimates. Diamond core is photographed post metre marking, for the entire length of the hole, two trays at a time, wet and dry.
	<i>The total length and percentage of the relevant intersections logged.</i>	<ul style="list-style-type: none"> Holes are logged in their entirety.
Sub-sampling techniques and sample preparation	<i>If core, whether cut or sawn and whether quarter, half or all core taken.</i>	<ul style="list-style-type: none"> The core has been cut in half and then quartered for sample purposes. Half core will be used for metallurgical studies with the remaining quarter stored as a library sample. Density measurements have been taken on all quarter core samples using the Archimedes method.
	<i>If non-core, whether riffled, tube sampled, rotary split, etc and whether sampled wet or dry.</i>	<ul style="list-style-type: none"> RC samples are collected as rotary split samples. Samples are typically dry.
	<i>For all sample types, the nature, quality and appropriateness of the sample preparation technique.</i>	<ul style="list-style-type: none"> Sample preparation follows industry best practice standards and is conducted by internationally recognised laboratories; i.e. <ul style="list-style-type: none"> Oven drying, jaw crushing and pulverising so that 80% passes -75 microns.
	<i>Quality control procedures adopted for all sub-sampling stages to maximise representivity of samples.</i>	<ul style="list-style-type: none"> Duplicates and blanks submitted approximately every 1/20 samples. Standards are submitted every 20 samples or at least once per hole. Cross laboratory checks and blind checks have been used at a rate of 5%.
	<i>Measures taken to ensure that the sampling is representative of the in situ material collected, including for instance results for field duplicate/second-half sampling.</i>	<ul style="list-style-type: none"> Measures taken include: <ul style="list-style-type: none"> regular cleaning of cyclones and sampling equipment to prevent contamination industry standard insertion of standards, blanks and duplicate samples Analysis of duplicates (field, laboratory and umpire) was completed and no issues identified with sampling representatively. Analysis of results from blanks and standards indicates no issues with contamination (or sample mix-ups) and a high level of accuracy.
	<i>Whether sample sizes are appropriate to the grain size of the material being sampled.</i>	<ul style="list-style-type: none"> Sample size is considered appropriate for the preparation of a Mineral Resource Estimate
Quality of assay data and laboratory tests	<i>The nature, quality and appropriateness of the assaying and laboratory procedures used and whether the technique is considered partial or total.</i>	<ul style="list-style-type: none"> Initial assaying (2017) completed by ALS Perth. Subsequent assaying (2018 onwards) completed by Nagrom laboratories Perth. Both laboratories use industry standard procedures for rare metals such as Li and Ta. Analytical techniques are total.
	<i>For geophysical tools, spectrometers, handheld XRF instruments, etc, the parameters used in determining the analysis including instrument make and model, reading times, calibrations factors applied and their derivation, etc.</i>	<ul style="list-style-type: none"> None used.
	<i>Nature of quality control procedures adopted (eg standards, blanks, duplicates, external laboratory checks) and whether acceptable levels of accuracy (ie lack of bias) and precision have been established.</i>	<ul style="list-style-type: none"> Duplicates and blanks submitted approximately every 20 samples. Standards are submitted every 20 samples or at least once per hole. Cross laboratory checks and blind checks have been used at a rate of 5%. Analysis of reference blanks, standards and duplicate samples show the data to be of acceptable accuracy and precision for the Mineral Resource estimation and classification applied.
	<i>The verification of significant intersections by either independent or alternative company personnel.</i>	<ul style="list-style-type: none"> Internal review by alternate company personnel.

Criteria	JORC Code explanation	Commentary
Verification of sampling and assaying	<i>The use of twinned holes.</i>	<ul style="list-style-type: none"> 12 diamond holes have been drilled as twins or in close proximity to existing RC drill holes. Results compare well with the original RC drill holes.
	<i>Documentation of primary data, data entry procedures, data verification, data storage (physical and electronic) protocols.</i>	<ul style="list-style-type: none"> Drilling and logging data is entered directly into Microsoft Excel spreadsheets onsite while drilling is ongoing. Data is then entered into Access Database and validated before being processed by industry standard software packages such as MapInfo and Micromine. Representative chip samples are collected for later reference.
	<i>Discuss any adjustment to assay data.</i>	<ul style="list-style-type: none"> Li% is converted to Li₂O% by multiplying by 2.15, Ta ppm is converted to Ta₂O₅ ppm by multiplying by 1.22.
Location of data points	<i>Accuracy and quality of surveys used to locate drill holes (collar and down-hole surveys), trenches, mine workings and other locations used in Mineral Resource estimation.</i>	<ul style="list-style-type: none"> All drill collars and geochemical samples are initially located using a handheld GPS. Drill collars are subsequently surveyed accurately by a licensed surveyor using DGPS techniques. Eastings and northings are measured to within +/- 2cm while elevations are measured to within +/- 10cm. All RC drillholes have been surveyed by a multi-shot digital downhole camera provided by the drilling contractor. All diamond drillholes have been surveyed with a REFLEX EZI-SHOT (1001) magnetic single shot camera.
	<i>Specification of the grid system used.</i>	<ul style="list-style-type: none"> GDA 94 Zone 51
	<i>Quality and adequacy of topographic control.</i>	<ul style="list-style-type: none"> Initial collar elevations are based on regional topographic dataset and GPS. Drillhole collars are surveyed post drilling with DGPS. Further topographic data (20cm contours) has been provided for the Project by a LIDAR flown by Fugro.
Data spacing and distribution	<i>Data spacing for reporting of Exploration Results.</i>	<ul style="list-style-type: none"> Varies due to initial drill programmes largely designed to test the down-dip potential of mineralised outcrops. The drill section spacing is 40 m to 100 m and on-section spacing is generally 30 m to 60 m.
	<i>Whether the data spacing and distribution is sufficient to establish the degree of geological and grade continuity appropriate for the Mineral Resource and Ore Reserve estimation procedure(s) and classifications applied.</i>	<ul style="list-style-type: none"> The data spacing and distribution is sufficient to establish the degree of geological and grade continuity appropriate for the Mineral Resource estimation and classification applied.
	<i>Whether sample compositing has been applied.</i>	<ul style="list-style-type: none"> None undertaken.
Orientation of data in relation to geological structure	<i>Whether the orientation of sampling achieves unbiased sampling of possible structures and the extent to which this is known, considering the deposit type.</i>	<ul style="list-style-type: none"> Drilling is typically oriented perpendicular to the interpreted strike of mineralisation. KVRC0015 was oriented at 45° to strike due to access issues and the need to test the main outcrop zone.
	<i>If the relationship between the drilling orientation and the orientation of key mineralised structures is considered to have introduced a sampling bias, this should be assessed and reported if material.</i>	<ul style="list-style-type: none"> Drilling orientation intersects the mineralisation at appropriate angles so as to be mostly unbiased and suitable for resource estimation of the major pegmatite bodies.
Sample security	<i>The measures taken to ensure sample security.</i>	<ul style="list-style-type: none"> Sample security is not considered to be a significant risk given the location of the deposit and bulk-nature of mineralisation. Nevertheless, the use of recognised transport providers, sample dispatch procedures directly from the field to the laboratory, and the large number of samples are considered sufficient to ensure appropriate sample security. Company geologist supervises all sampling and subsequent storage in field. The same geologist arranges delivery of samples to Nagrom laboratories in Perth via courier.
Audits or reviews	<i>The results of any audits or reviews of sampling techniques and data.</i>	<ul style="list-style-type: none"> Independent, expert competent person reviews have been completed by Michelle Wild of Wildfire Resources Pty Ltd and Christine Standing of Optiro

Criteria	JORC Code explanation	Commentary
		<p>Limited on the resource drilling, sampling protocols and data.</p> <ul style="list-style-type: none"> This included a laboratory visit to Nagrom by Michelle Wild. Results have not indicated any significant discrepancies.

Section 2 Reporting of Exploration Results

Criteria	JORC Code explanation	Commentary
Mineral tenement and land tenure status	<i>Type, reference name/number, location and ownership including agreements or material issues with third parties such as joint ventures, partnerships, overriding royalties, native title interests, historical sites, wilderness or national park and environmental settings.</i>	<ul style="list-style-type: none"> The Kathleen Valley Project is located ~680 km NE of Perth and ~45 km NNW of Leinster in Western Australia. The Project comprises four granted mining leases - MLs 36/264, 265, 459, 460 and one Exploration License - E36/879. The mining leases (MLs) were acquired from Ramelius Resources Limited via a Sales Agreement completed in 2016. The MLs have been transferred to LRL (Aust) Pty Ltd, a wholly owned subsidiary of Liontown Resources Limited (Liontown). Ramelius acquired 100% of the Kathleen Valley Project MLs in June 2014 from Xstrata Nickel Operations Pty Ltd (Xstrata). Xstrata retains rights to any nickel discovered over the land package via an Offtake and Clawback Agreement. LRL (Aust) Pty Ltd has assumed the following Agreement: <ul style="list-style-type: none"> Bullion and Non-Bullion Royalty Agreement of a 2% Gross Production Royalty affecting M36/264-265 and 459-460. The EL is in the name of Liontown Resources Limited with no third-party obligations apart from statutory requirements. The tenements are covered by the Tjiwarl Determined Native Title Claim (WC11/7). Liontown has signed Access Agreements with the NT group. LRL (Aust) Pty Ltd has received Section 18 consent to drill on certain areas within M36/459 and M36/460
	<i>The security of the tenure held at the time of reporting along with any known impediments to obtaining a licence to operate in the area.</i>	<ul style="list-style-type: none"> All tenements are in good standing.
Exploration done by other parties	<i>Acknowledgment and appraisal of exploration by other parties.</i>	<ul style="list-style-type: none"> Multiple phases of exploration have previously been completed for gold and nickel. There has been limited sporadic prospecting for Li, Ta and Sn, principally by Jubilee Mines (subsequently taken over by Xstrata). Work comprised geological mapping, broad spaced soil sample lines and rock chip sampling of the pegmatites. Details of the methods and procedures used have not been documented. There has been no previous drill testing of the Li and Ta prospective pegmatites prior to Liontown acquiring the Project.
Geology	<i>Deposit type, geological setting and style of mineralisation.</i>	<ul style="list-style-type: none"> The Project is located on the western edge of the Norseman- Wiluna Belt within the Archaean Yilgarn Craton. The Kathleen Valley Project contains a series of quartz-feldspar-muscovite-spodumene pegmatites hosted in mafic rocks related to the Kathleen Valley Gabbro or the Mt Goode Basalts. The pegmatites are LCT type lithium bearing-pegmatites.
Drillhole Information	<i>A summary of all information material to the understanding of the exploration results including a tabulation of the following information for all Material drillholes:</i> <ul style="list-style-type: none"> <i>easting and northing of the drillhole collar</i> <i>elevation or RL (elevation above sea level in metres) of the drillhole collar</i> <i>dip and azimuth of the hole</i> 	<ul style="list-style-type: none"> When reporting Exploration Results, see figures and appendices in accompanying report When reporting Mineral Resource Estimate, diagrams in the announcement show the location of and distribution of drill holes in relation to the resource.

Criteria	JORC Code explanation	Commentary
	<ul style="list-style-type: none"> down hole length and interception depth hole length. 	
Data aggregation methods	<i>In reporting Exploration Results, weighting averaging techniques, maximum and/or minimum grade truncations (e.g. cutting of high grades) and cut-off grades are usually Material and should be stated.</i>	<ul style="list-style-type: none"> Li₂O intercepts calculated using 0.4% cut off with a maximum 2m internal dilution typically applied except where drill hole logging (e.g. continuous pegmatite) and assays indicate wider dilution is warranted as overall grade is high enough to allow mining to take entire geological unit. Higher grade intervals calculated using 1.5% Li₂O cut off. No upper cuts applied. Ta₂O₅ values only quoted when lithium intersections reported. Not relevant when only reporting definition of Mineral Resource Estimation.
Relationship between mineralisation widths and intercept lengths	<i>If the geometry of the mineralisation with respect to the drillhole angle is known, its nature should be reported. If it is not known and only the down hole lengths are reported, there should be a clear statement to this effect (e.g. 'down hole length, true width not known').</i>	<ul style="list-style-type: none"> Estimates of true widths provided at end of Appendices attached to ASX announcements which list drill hole statistics Not relevant when only reporting definition of Mineral Resource Estimation.
Diagrams	<i>Appropriate maps and sections (with scales) and tabulations of intercepts should be included for any significant discovery being reported. These should include, but not be limited to a plan view of drill hole collar locations and appropriate sectional views.</i>	<ul style="list-style-type: none"> When reporting Exploration Results, see figures and appendices in accompanying report Not relevant if only reporting definition of a Mineral Resource estimate.
Balanced reporting	<i>Where comprehensive reporting of all Exploration Results is not practicable, representative reporting of both low and high grades and/or widths should be practiced to avoid misleading reporting of Exploration Results.</i>	<ul style="list-style-type: none"> All recent exploration results reported and tabulated. Not relevant if only reporting definition of a Mineral Resource estimate.
Other substantive exploration data	<i>Other exploration data, if meaningful and material, should be reported including (but not limited to): geological observations; geophysical survey results; geochemical survey results; bulk samples – size and method of treatment; metallurgical test results; bulk density, groundwater, geotechnical and rock characteristics; potential deleterious or contaminating substances.</i>	<ul style="list-style-type: none"> Where relevant, this information has been included or referred to elsewhere in this Table.
Further work	<i>The nature and scale of planned further work (e.g. tests for lateral extensions or depth extensions or large-scale step-out drilling).</i>	<ul style="list-style-type: none"> Preparation of updated MRE Metallurgical test work Mining option studies. PFS.

Section 3 Estimation and Reporting of Mineral Resources

Criteria	JORC Code explanation	Commentary
Database integrity	<i>Measures taken to ensure that data has not been corrupted by, for example, transcription or keying errors, between its initial collection and its use for Mineral Resource estimation purposes.</i>	<ul style="list-style-type: none"> Drill hole data was extracted directly from the Company's drill hole database, which includes internal data validation protocols. Data was further validated by Optiro upon receipt, and prior to use in the estimation.
	<i>Data validation procedures used.</i>	<ul style="list-style-type: none"> Validation of the data was confirmed using mining software (Datamine) validation protocols, and visually in plan and section views.
Site visits	<i>Comment on any site visits undertaken by the Competent Persons and the outcome of those visits.</i>	<ul style="list-style-type: none"> Liontown personnel Mr. Richards and Mr. Day have visited the site on numerous occasions to supervise the drilling programmes. Ms. Wild (Principal Geologist and Director of Wildfire Resources Pty Ltd) and Mrs. Standing (Optiro Pty Ltd) have visited the site on separate occasions during resource definition drilling programmes to review sampling procedures. Ms. Wild reported that, in general, site practices were quite good, core quality was excellent and RC sample quality was moderate. Mrs. Standing has confirmed site practices are

Criteria	JORC Code explanation	Commentary
		appropriate and satisfactory for the preparation of a Mineral Resource Estimate.
Geological interpretation	<i>Confidence in (or conversely, the uncertainty of the geological interpretation of the mineral deposit).</i>	<ul style="list-style-type: none"> The confidence in the geological interpretation is reflected by the assigned resource classification.
	<i>Nature of the data used and of any assumptions made.</i>	<ul style="list-style-type: none"> Both assay and geological data were used for the mineralisation interpretation. The lithium mineralisation is defined by a nominal 0.4% Li₂O cut-off grade. Continuity between drill holes and sections is good.
	<i>The effect, if any, of alternative interpretations on Mineral Resource estimation.</i>	<ul style="list-style-type: none"> No alternative interpretations were considered. Any alternative interpretations are unlikely to significantly affect the Mineral Resource estimate.
	<i>The use of geology in guiding and controlling Mineral Resource estimation.</i>	<ul style="list-style-type: none"> Geological logging (including spodumene crystal orientation from the diamond core) has been used for interpretation of the pegmatites.
	<i>The factors affecting continuity both of grade and geology.</i>	<ul style="list-style-type: none"> The mineralisation is contained within pegmatite veins that are readily distinguished from the surrounding rocks. Sectional interpretation and wire framing indicates good continuity of the interpreted pegmatite veins both on-section and between sections. The confidence in the grade and geological continuity is reflected by the assigned resource classification.
Dimensions	<i>The extent and variability of the Mineral Resource expressed as length (along strike or otherwise), plan width, and depth below surface to the upper and lower limits of the Mineral Resource.</i>	<ul style="list-style-type: none"> Nineteen mineralised pegmatites have been identified at the Kathleen Valley Project which extend from surface to a depth of 480m. At Mt Mann, two steeply-dipping (-70° west) pegmatites have been drilled over a strike length of 1,200m and to a vertical depth of 480m. The two pegmatites are up to 35m thick and have average thicknesses of 9m and 16m. At Kathleen's Corner, 17 sub-horizontal pegmatites have been drilled over an area of 1,800m by 1,300m. These pegmatites outcrop in the northeast, are up to 40m thick with an average thickness of 8m and extend down-dip for 850m to 950m, where they merge with Mt Mann pegmatites at approximately 250m to 300m below surface to form a single, thick (35m to 75m) mineralised body.
Estimation and modelling techniques	<i>The nature and appropriateness of the estimation technique(s) applied and key assumptions, including treatment of extreme grade values, domaining, interpolation parameters and maximum distance of extrapolation from data points. If a computer assisted estimation method was chosen include a description of computer software and parameters used.</i>	<ul style="list-style-type: none"> Data analysis and estimation was undertaken using Snowden Supervisor and Datamine software. Lithium oxide (Li₂O) % and tantalum pentoxide (Ta₂O₅) ppm block grades were estimated using ordinary kriging (OK). Optiro considers OK to be an appropriate estimation technique for this type of mineralisation. The nominal spacing of the drill holes is 50m by 50m. The along section spacing ranges from 30m to 100m and on-section spacing ranges from generally 30m to 60m. Almost 93% of the assay data for within the mineralised pegmatites is from samples of 1m intervals, 1% is from sample of >1m (to a maximum of 1.6m) and 6% is from intervals of less than 1m. The data was composited to 1m downhole intervals for analysis and grade estimation. Variogram analysis was undertaken to determine the kriging estimation parameters used for OK estimation of Li₂O and Ta₂O₅. Li₂O mineralisation continuity was interpreted from variogram analyses to have an along strike range of 50m to 168m and a down-dip (or across strike) range of 48m to 100m. Ta₂O₅ mineralisation continuity was interpreted from variogram analyses to have an along strike range of 50m to 117m and a down-dip (or across strike) range of 100m to 142m. A maximum extrapolation distance of 50m was applied along strike. Down dip extrapolation was generally 30m, however, the geological

Criteria	JORC Code explanation	Commentary
		<p>interpretation (and thus grade extrapolation) of the feeder zone (below Mt Mann) was extended by 30m depth and up to 150m down dip to include intersections with visible spodumene mineralisation (that have not yet been assayed) and where assay data confirmed along strike extensions of this deeper mineralisation.</p> <ul style="list-style-type: none"> • Kriging neighbourhood analysis was performed in order to determine the block size, sample numbers and discretisation levels. • Three estimation passes were used for Li₂O and Ta₂O₅; the first search was based upon the variogram ranges; the second search was two times the initial search and the third search was up to seven times the second search and second and third searches had reduced sample numbers required for estimation. • Almost 87% of the total Li₂O block grades were estimated in the first search pass, 12% within the second search pass and only 1% estimated in the third search pass. A few blocks (0.6%) were not estimated within three of the pegmatites and the average estimated block grade for each domain was assigned to these blocks. Blocks with assigned grades comprise 0.002% of the total resource model. • The majority of Ta₂O₅ block grades (almost 91%) were estimated in the first pass, 8% in the second pass and 0.3% in the third pass. • The Li₂O and Ta₂O₅ estimated block model grades were visually validated against the input drill hole data and comparisons were carried out against the declustered drillhole data and by northing, easting and elevation slice.
	<p><i>Description of how the geological interpretation was used to control the resource estimates.</i></p>	<ul style="list-style-type: none"> • Geological interpretations were completed on sections which were wire framed to create a 3D interpretation of the mineralised pegmatites. • The interpretation of mineralisation was by Liontown based on geological logging and Li₂O content. A nominal grade of 0.4% Li₂O was used to define the mineralisation within the interpreted pegmatites. • The mineralised domain is considered geologically robust in the context of the resource classification applied to the estimate.
	<p><i>Discussion of basis for using or not using grade cutting or capping.</i></p>	<ul style="list-style-type: none"> • Li₂O and Ta₂O₅ have low coefficients of variation (CV). Some higher-grade outliers were noted and the Ta₂O₅ grades were capped (top-cut). The top-cut level was determined using a combination of top-cut analysis tools, including grade histograms, log probability plots and the CV.
	<p><i>The availability of check estimates, previous estimates and/or mine production records and whether the Mineral Resource estimate takes appropriate account of such data.</i></p>	<ul style="list-style-type: none"> • The Mineral Resource was first estimated for the Kathleen's Valley Lithium Project in August 2018 and was updated in July 2019. The July 2019 Mineral Resource comprising 74.9 Mt at an average grade of 1.3% Li₂O and 140 ppm Ta₂O₅ was reported above a Li₂O cut-off grade of 0.5% for open pit potential (above 200mRL) and 0.7% for underground potential (below 200 mRL). • Since the July 2019 Mineral Resource was estimated an additional 33 reverse circulation holes, for a total of 13,051m (including 10 pre-collars) and 22 diamond core holes (for a total of 4,523m) have been drilled. These have extended the mineralisation at Mt Mann at depth (from 390m in 2019 to 480m in 2020) and at Kathleen's Corner to the northwest by 700m. • The resource tonnage has increased from 74.9Mt in 2019 to 139Mt in 2020 and the average grade of the resource of 1.3% Li₂O and 140 ppm Ta₂O₅ is the same for both resource estimates. • In addition, the cut-off grade used for Mineral

Criteria	JORC Code explanation	Commentary
		<p>Resource reporting have been changed to reflect the combination of potential mining methods.</p> <ul style="list-style-type: none"> No production has occurred.
	<i>The assumptions made regarding recovery of by-products.</i>	<ul style="list-style-type: none"> No assumptions have been applied for the recovery of by-products. Metallurgical test work is ongoing to determine the recoveries that could be expected.
	<i>Estimation of deleterious elements or other non-grade variables of economic significance (e.g. sulphur for acid mine drainage characterisation).</i>	<ul style="list-style-type: none"> Deleterious elements were not considered for the Mineral Resource estimate. Metallurgical test work is in progress. Results to date indicate low levels of Fe within the interpreted mineralised pegmatite domains. Sulphur assays have been determined for more than 27,000 host rock samples – results indicate that acid mine drainage will not be a significant environmental factor.
	<i>In the case of block model interpolation, the block size in relation to the average sample spacing and the search employed.</i>	<ul style="list-style-type: none"> Grade estimation was into parent blocks of 10mE by 10mN by 3.0mRL. Block dimensions were selected from kriging neighbourhood analysis and reflect the variability of the deposit as defined by the current drill spacing. Sub-cells to a minimum dimension of 2.5mE by 2.5mN by 0.5mRL were used to represent volume.
	<i>Any assumptions behind modelling of selective mining units.</i>	<ul style="list-style-type: none"> Selective mining units were not modelled.
	<i>Any assumptions about correlation between variables.</i>	<ul style="list-style-type: none"> Li₂O and Ta₂O₅ are not correlated. Both Li₂O and Ta₂O₅ were estimated independently.
	<i>The process of validation, the checking process used, the comparison of model data to drillhole data, and use of reconciliation data if available.</i>	<ul style="list-style-type: none"> No production has taken place and thus no reconciliation data is available.
Moisture	<i>Whether the tonnages are estimated on a dry basis or with natural moisture, and the method of determination of the moisture content.</i>	<ul style="list-style-type: none"> Tonnages have been estimated on a dry basis.
Cut-off parameters	<i>The basis of the adopted cut-off grade(s) or quality parameters applied.</i>	<ul style="list-style-type: none"> A cut-off grade of 0.55% Li₂O has been selected to represent the portion of the resource that may be considered for eventual economic extraction by a combination of open pit and underground mining methods. This cut-off grade has been selected by Liontown Resources in consultation with Optiro based on current experience and in-line with cut-off grades applied for reporting of Mineral Resources of lithium hosted in spodumene bearing pegmatites elsewhere in Australia.
Mining factors or assumptions	<i>Assumptions made regarding possible mining methods, minimum mining dimensions and internal (or, if applicable, external) mining dilution. It is always necessary as part of the process of determining reasonable prospects for eventual economic extraction to consider potential mining methods, but the assumptions made regarding mining methods and parameters when estimating Mineral Resources may not always be rigorous.</i>	<ul style="list-style-type: none"> The mineralisation at Kathleen Valley extends from surface and would be suitable for open pit mining. High grade mineralisation is present at depth and would be suitable for underground mining. The Kathleen Valley Lithium Project is located in a well-established mining region and in close proximity to existing close to existing transport, energy and camp infrastructure. On the basis of these assumptions, it is considered that there are no mining factors which are likely to affect the assumption that the deposit has reasonable prospects for eventual economic extraction.
Metallurgical factors or assumptions	<i>The basis for assumptions or predictions regarding metallurgical amenability. It is always necessary as part of the process of determining reasonable prospects for eventual economic extraction to consider potential metallurgical methods, but the assumptions regarding metallurgical treatment processes and parameters made when reporting Mineral Resources may not always be rigorous.</i>	<ul style="list-style-type: none"> A Pre-feasibility level test work programme was conducted at ALS in Perth to provide sufficient test data to develop the process design criteria for the project. A total of 81 intercepts from across the three main areas (Mt Mann, Kathleen Corner and Kathleen Valley North) were selected for the Pre-feasibility Study. A master composite was created for testing from these samples which are representative of the whole deposit and include a range of grades and depths. No variability testing has been undertaken at this time. Key aspects of the metallurgical test work included the following:

Criteria	JORC Code explanation	Commentary
		<ul style="list-style-type: none"> ○ head assay ○ SMC testing on five comminution samples ○ size by size assay ○ crushing and wet screening at three sizes ○ heavy liquid separation (HLS) at three crush and screen sizes ○ Dense media separation of a bulk sample ○ bond ball work index on DMS middlings ○ magnetic separation to remove ferrous materials ○ rougher flotation to examine collector choice, residence time, desliming and conditioning ○ cleaner flotation to examine residence time and number of stages ○ thickening of flotation and slime tailings (in progress) ○ filtration of concentrate ○ rheology of tailings. • Key results from the test-work indicated that: <ul style="list-style-type: none"> ○ Samples were moderately competent, with comminution results similar to other pegmatites. ○ Wet screening data indicated that there was a trade-off in crush size and screen size with liberation. A finer crush size increased liberation in the HLS stage but increased fines production. A crush size of 6 mm was selected. ○ DMS testing indicated that a saleable concentrate with a grade of more than 6% Li₂O could be produced together with a low-grade coarse tail. ○ Grind optimisation of the flotation feed indicated that a primary grind of 125 microns gave the best recovery and was thus selected for subsequent test work. ○ Rougher flotation test work indicated that a modified oleic acid collector gave the best flotation performance. ○ Batch cleaner flotation results indicated that a concentrate with a grade of more than 6% Li₂O could be produced. ○ Concentrate filtration test work, currently being finalised, has indicated that vacuum filtration will be adequate for dewatering. ○ Rheology test work indicated that the tailings have low viscosity at the proposed tailings density. • The overall metallurgical recovery estimated from the flowsheet testing was 76% based on a combination of dense media testing and batch flotation. The proposed metallurgical process is used in several lithium projects currently operating in Western Australia. The process has been tested at Pre-feasibility level in the laboratory and further work is planned during the DFS.
Environmental factors or assumptions	<i>Assumptions made regarding possible waste and process residue disposal options. It is always necessary as part of the process of determining reasonable prospects for eventual economic extraction to consider the potential environmental impacts of the mining and processing operation.</i>	<ul style="list-style-type: none"> • Baseline flora and fauna studies have been completed and it is considered unlikely, given current knowledge that impacts on conservation significant flora, fauna and ecological communities will result from development of the project. • Further baseline studies are scheduled during the DFS.
Bulk density	<i>Whether assumed or determined. If assumed, the basis for the assumptions. If determined, the method used, whether wet or dry, the frequency of the measurements, the nature, size and representativeness of the samples. Discuss assumptions for bulk density estimates used in the evaluation process of the different materials.</i>	<ul style="list-style-type: none"> • Bulk density was measured for 2,665 core samples (including 1,988 samples of pegmatite) from diamond holes using Archimedes measurements. • The density data for the pegmatites has a range of 2.12 to 3.46t/m³. • A bulk density of 2.71t/m³ was assigned to the oxide and transitional mineralised pegmatite and 2.73t/m³ was assigned to the fresh mineralised pegmatite.
Classification	<i>The basis for the classification of the Mineral Resources into varying confidence categories.</i>	<ul style="list-style-type: none"> • Mineral Resources have been classified as Measured, Indicated or Inferred. • In general, the pegmatites that have been tested by

Criteria	JORC Code explanation	Commentary
		<p>the 50 m by 50 m spaced drill holes have high confidence in the geological interpretation and, having higher estimation quality, were classified as Measured.</p> <ul style="list-style-type: none"> • Areas where the drill spacing is up to 60m by 10m that have good confidence in the geological interpretation and where the majority of block grades were estimated within the first search (but where the estimation quality is lower than the Measured areas) were classified as Indicated. • Areas where the drill spacing is up to 60m by 100m, that have good confidence in the geological interpretation and where the majority of block grades were estimated in the second and third search passes or in areas of grade extrapolation have been classified as Inferred.
	<p><i>Whether appropriate account has been taken of all relevant factors (ie relative confidence in tonnage/grade estimations, reliability of input data, confidence in continuity of geology and metal values, quality, quantity and distribution of the data).</i></p>	<ul style="list-style-type: none"> • The Mineral Resource has been classified on the basis of confidence in geological and grade continuity and taking into account the quality of the sampling and assay data, data density and confidence in estimation of Li₂O and Ta₂O₅ content (from the kriging metrics).
	<p><i>Whether the result appropriately reflects the Competent Person's view of the deposit</i></p>	<ul style="list-style-type: none"> • The assigned classification of Measured, Indicated and Inferred reflects the Competent Persons' assessment of the accuracy and confidence levels in the Mineral Resource estimate.
Audits or reviews	<p><i>The results of any audits or reviews of Mineral Resource estimates.</i></p>	<ul style="list-style-type: none"> • The Mineral Resource has been reviewed internally as part of normal validation processes by Optiro. • No external audit or review of the current Mineral Resource has been conducted.
Discussion of relative accuracy/confidence	<p><i>Where appropriate a statement of the relative accuracy and confidence level in the Mineral Resource estimate using an approach or procedure deemed appropriate by the Competent Person.</i></p> <p><i>The statement should specify whether it relates to global or local estimates, and, if local, state the relevant tonnages, which should be relevant to technical and economic evaluation. Documentation should include assumptions made and the procedures used.</i></p> <p><i>These statements of relative accuracy and confidence of the estimate should be compared with production data, where available.</i></p>	<ul style="list-style-type: none"> • The assigned classification of Measured, Indicated and Inferred reflects the Competent Persons' assessment of the accuracy and confidence levels in the Mineral Resource estimate. • The confidence levels reflect potential production tonnages on a quarterly basis, assuming open pit mining. • No production has occurred from the deposit.