



ASX Release: 8 May 2020

ASX Code: VMC

**TARGET AREAS IDENTIFIED AT HENDERSON GOLD-NICKEL PROJECT,
EXPANDED TENEMENT HOLDINGS
NORTH COOLGARDIE DISTRICT, EASTERN GOLDFIELDS, WA**

Venus Metals Corporation Limited (ASX: VMC) is pleased to announce that a historical data review and target generation program have identified several prospective target areas within Henderson Au-Ni Project tenement E30/520 (90% Venus and 10% Prospector) which is located ca. 50km northwest of the town of Menzies in the North Coolgardie District of the Eastern Goldfields of Western Australia (Figure 1).

The Henderson Au-Ni Project is situated in the southern section of the Ularring Greenstone Belt and straddles the boundary between the Youanmi and Kalgoorlie Terranes in the central section of the Yilgarn Craton. Two regionally significant fault zones, the Ida Fault and Ballard Fault (Figures 2a, 2b & 3) intersect the project area and are considered to have played important roles in the formation of structurally controlled gold deposits. Target areas have been identified based on the review of historical exploration data and geological and geophysical interpretations of the area (Figures 3, 4).

Gold Targets:

- **Snake Hill-** A high priority target located adjacent to the Ida Fault and defined by abundant historical workings and historical sampling including up to 5.1 g/t Au rock chip samples (VGS, 2007; WAMEX report A77141) and an initial 500ppbAu soil lag anomaly (WMC, 1992; WAMEX report A36469). A nearby intrusive body has been interpreted from aeromagnetic data (Figure 4) presenting a possible geological analogue of the Bottle Creek Au Mine located along the Ida Fault ca. nine km to the northwest (Legge et al., 1990).
- **Henderson Bore-** North trending zone with patchy soil anomalies along the eastern edge of the greenstone belt. Gold appears concentrated at contacts between dolerite and ultramafics. Continuation of this zone under cover has not been tested.
- **Snake Hill East-** Located between Henderson Bore and Snake Hill, this area has had little historical exploration. An interpreted antiformal hinge zone presents a structurally favourable site for gold mineralization.
- **Hill Top East-** NNW trending zone of anomalous soil geochemistry possibly outlining a mineralized fault. Area of poor outcrop but with historical workings.
- **Emerald South 1 and Emerald South 2 -** Two historical soil geochemical anomalies that have not been properly explained.

Nickel Target: Blue Well. This area covers a Proterozoic dyke where it intrudes the greenstone sequence and adjacent granites. Potential for Mt Alexander style or Jimberlana Dyke style nickel mineralization.

Please Direct Enquiries to:

Matthew Hogan
Managing Director
Ph: 08 9321 7541

Mezzanine level, BGC Centre 28 The Esplanade, Perth WA 6000
Tel +618 9321 7541 | Fax +618 9486 9587 | www.venusmetals.com.au
ABN 9912 3250 582.

Kumar Arunachalam
Executive Director
Ph: 08 9321 7541



Now Venus Metals has four exploration licence applications E30/519, E30/521 and E29/1096 (100% VMC), E30/520 (90% VMC) at Henderson Au-Ni Project covering 597 km² area. Venus Metals looks forward to further updating shareholders as further detailed exploration commences at Henderson project following the grant of the tenement areas in the coming months.

References.

Wamex report A36469, 1992. Relinquishment Report for Morley's Bore JV, Exploration Licence 30/71, Mining Lease 30/99, Prospecting Licence 30/798. Western Mining Corporation.
WAMEX report A77141, 2007. Annual Report 13 October 2006 to 12 October 2007, Emerald Project, E30/286. VGS Pty Ltd.
Legge, PJ, et al., 1990. Bottle Creek Gold Deposit. Geology of the Mineral Deposits of Australia and Papua New Guinea, AusIMM Monograph 14, 357-363.

This announcement is authorised by the Board of Venus Metals Corporation Limited.

Competent Person's Statement

The information in this report that relates to Exploration Results, Mineral Resources or Ore Resources is based on information compiled by Dr F Vanderhor, Geological Consultant who is a member of The Australian Institute of Geoscientists (AIG). Dr Vanderhor has sufficient experience that is relevant to the style of mineralisation and type of deposit under consideration and to the activity that he is undertaking to qualify as a Competent Person as defined in the 2012 Edition of the Joint Ore Reserves Committee (JORC) Australasian Code for Reporting of Exploration Results, Mineral Resources and Ore Reserves. Dr Vanderhor consents to the inclusion in the report of the matters based on his information in the form and context in which it appears.

Exploration Targets

The term 'Exploration Target' should not be misunderstood or misconstrued as an estimate of Mineral Resources and Reserves as defined by the JORC Code (2012), and therefore the terms have not been used in this context.

Forward-Looking Statements

This document may include forward-looking statements. Forward-looking statements include, but are not limited to, statements concerning Venus Metals Corporation Limited planned exploration program and other statements that are not historical facts. When used in this document, the words such as "could," "plan," "estimate," "expect," "intend," "may", "potential," "should," and similar expressions are forward-looking statements. Although Venus Metals Corporation Ltd believes that its expectations reflected in these forward-looking statements are reasonable, such statements involve risks and uncertainties and no assurance can be given that actual results will be consistent with these forward-looking statements.

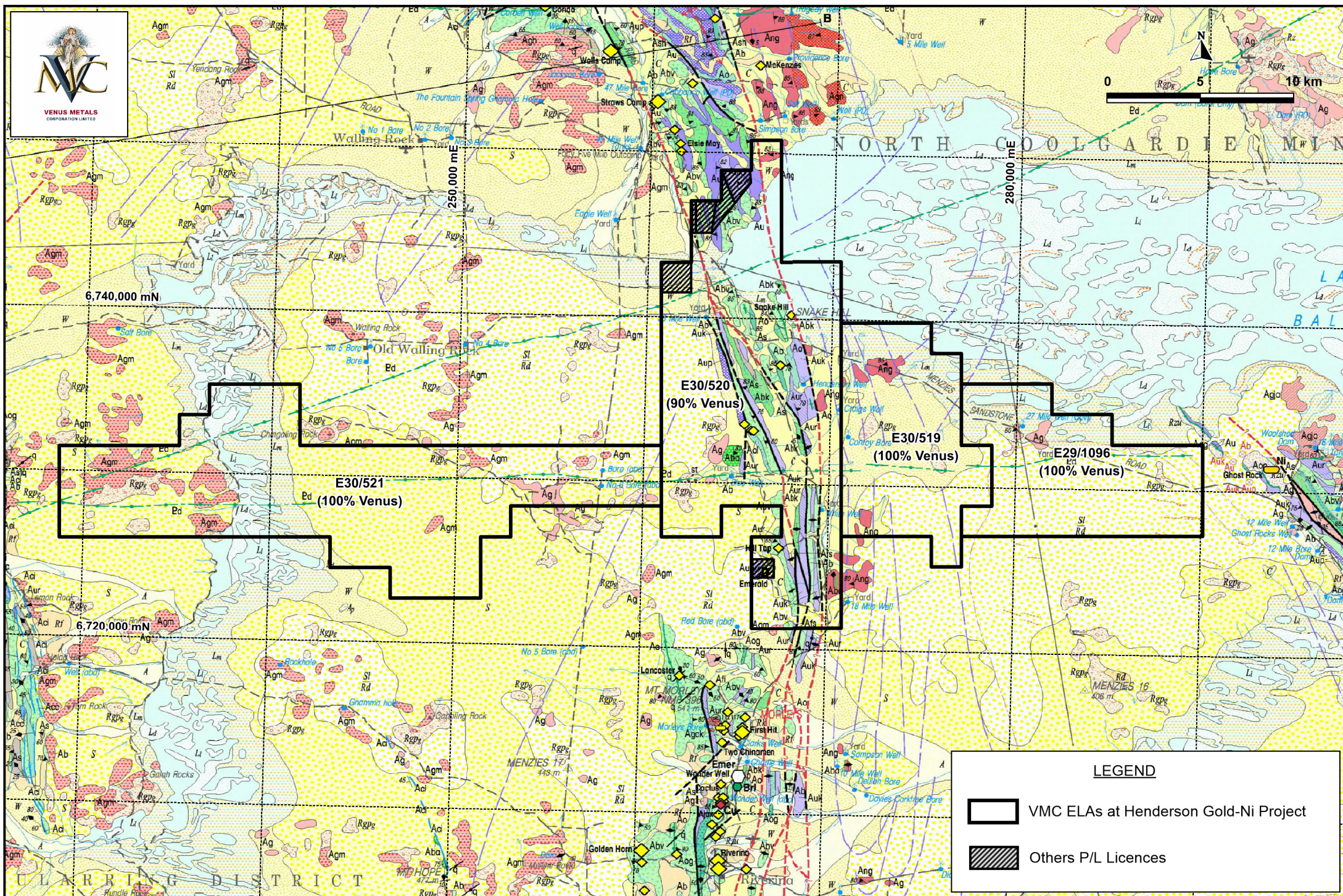


Figure 2a. Location of Venus ELAs at Henderson Gold-Ni Project on GSWA 250k Geology Map

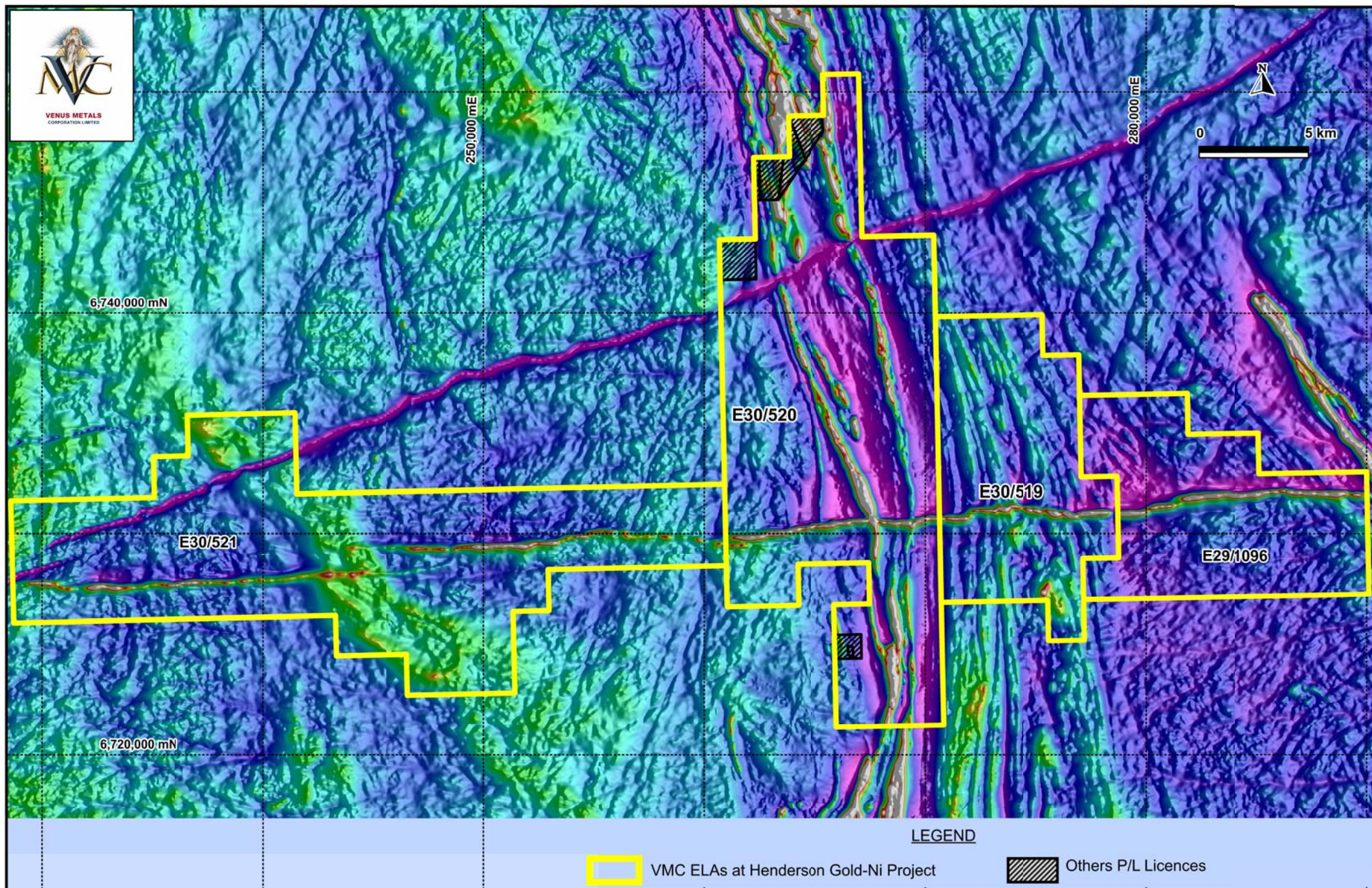


Figure 2b. Location of Venus ELAs at Henderson Gold-Ni Project on Regional Aeromagnetic Image



VENUS METALS
CORPORATION LIMITED

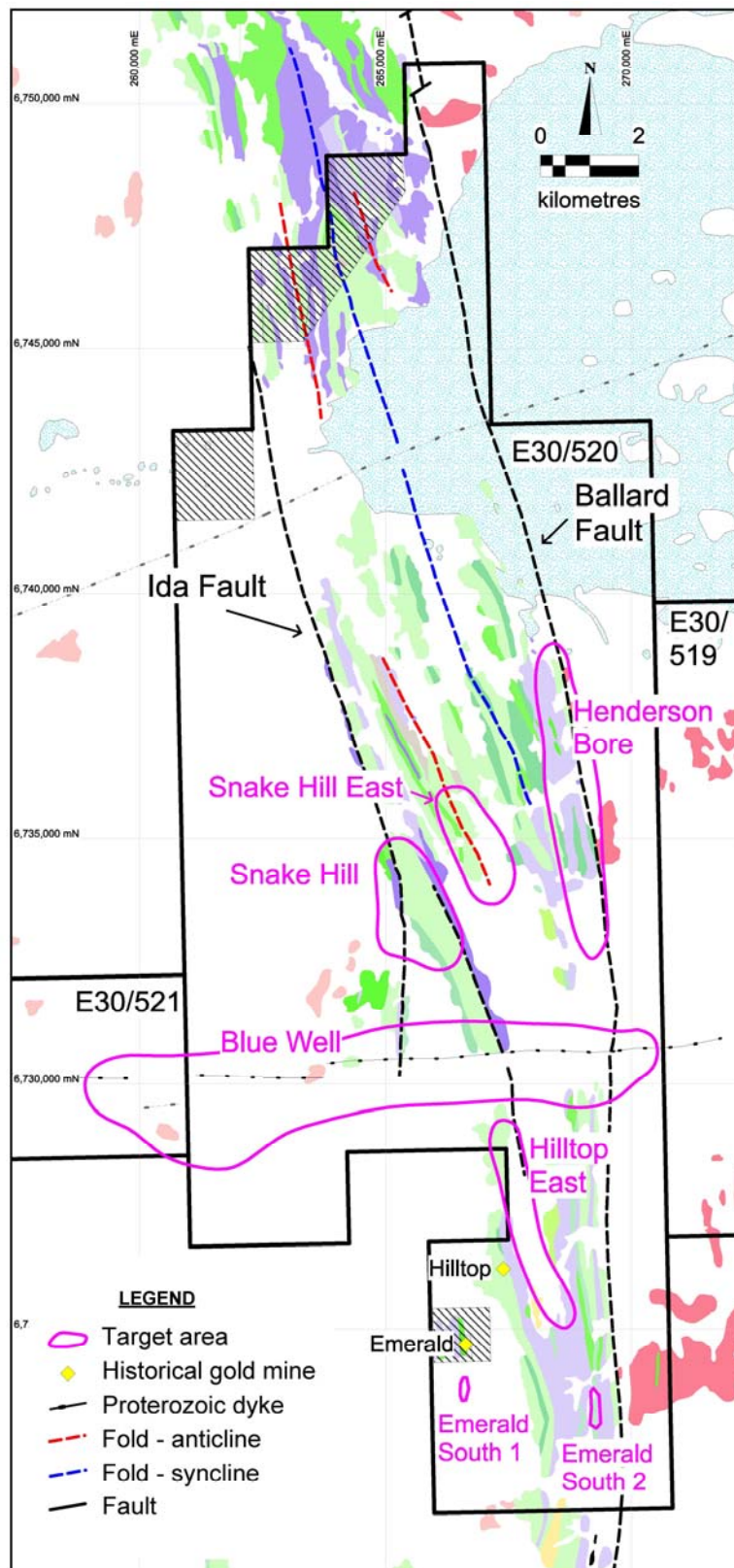


Figure 3. Location of Gold-Nickel Target Areas on GSWA 100k Bedrock Geology Map



VENUS METALS
CORPORATION LIMITED

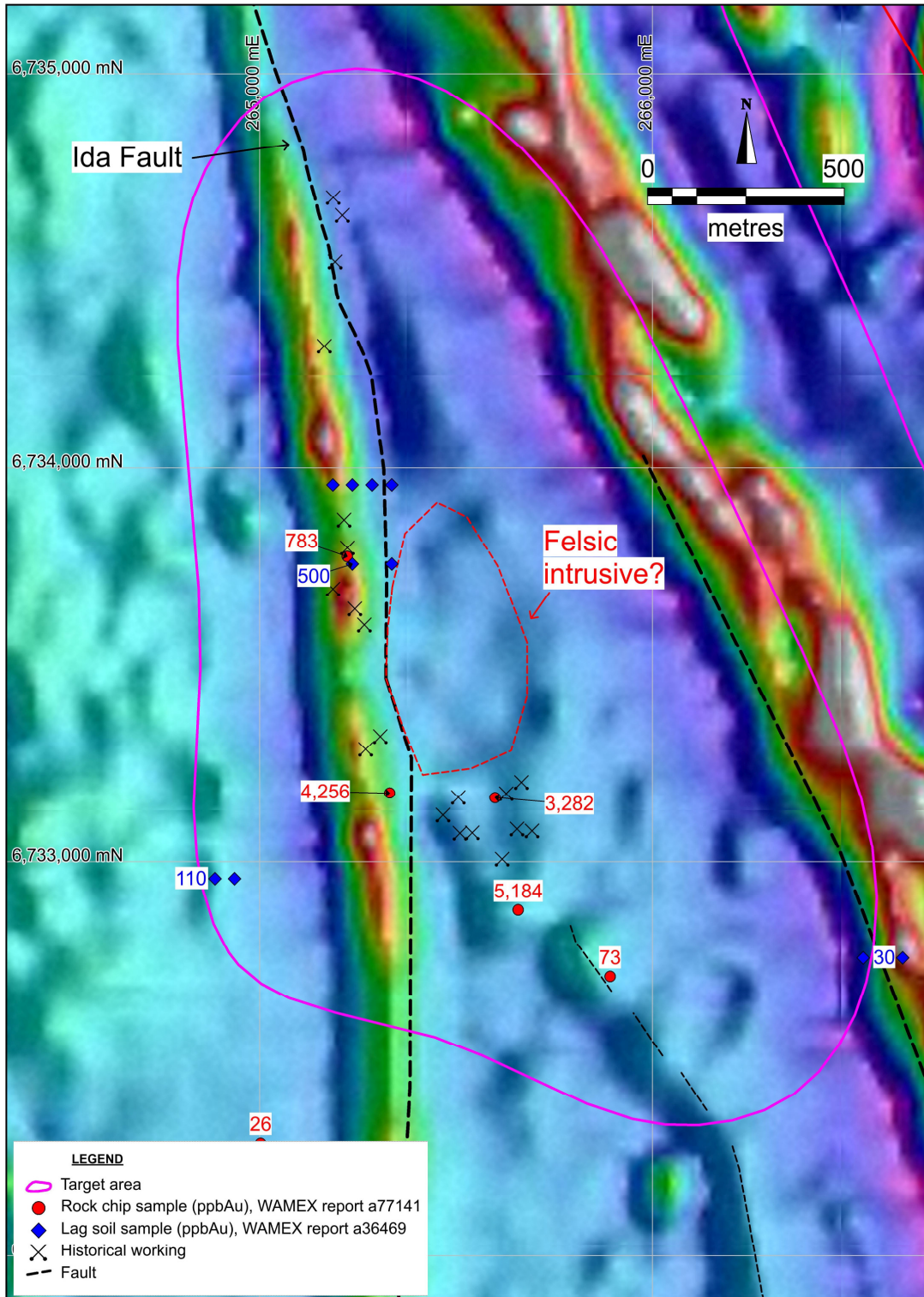


Figure 4. Snake Hill Target. Historical Samples with Anomalous Gold Assays on Aeromagnetic Image