



ASX ANNOUNCEMENT

15 May 2020

## Investor Presentation – Trigg Mining MD to Present at Share Café “Hidden Gems” Webinar Today

**Trigg Mining Limited (ASX: TMG) (Trigg or the Company)** is pleased to advise that the Company’s Managing Director, Keren Paterson, will be presenting today at the **Weekly Share Café “Micro/Small Cap Hidden Gems” Webinar**, which provides investors with an opportunity to hear from, and engage with, a range of ASX-listed micro/small-cap companies.

A copy of the Company’s latest investor presentation to be delivered at today’s webinar is attached.

Investors or shareholders who would like to participate in this event, which commences at 12.30pm AWST / 2.30pm AEST today, can register by following the link below:

[https://us02web.zoom.us/webinar/register/WN\\_DMsk-qzTRj23HSAVm\\_PwSA](https://us02web.zoom.us/webinar/register/WN_DMsk-qzTRj23HSAVm_PwSA)

Authorised by:

**Keren Paterson**  
Managing Director  
**Trigg Mining Limited**

### For more information please contact:

Keren Paterson  
Managing Director  
Trigg Mining Limited  
T: (08) 9220 2231  
E: [info@triggmining.com.au](mailto:info@triggmining.com.au)

Nicholas Read  
Investor and Media Relations  
Read Corporate  
T: (08) 9388 1474  
E: [nicholas@readcorporate.com.au](mailto:nicholas@readcorporate.com.au)



### **About Trigg Mining**

Trigg Mining is looking to secure Australia's sustainable agriculture future through the exploration of essential potassium fertiliser, sulphate of potash (SOP), necessary for global food production and human nutrition. SOP provides essential macro nutrients for plant growth without any detrimental elements, such as chloride found in muriate of potash (MOP). In addition, SOP can be produced sustainably through the solar evaporation of potassium-rich hypersaline brine water, without the need for large open pits or waste-rock dumps.

The Trigg Mining SOP Projects are located nearby established energy and transport infrastructure for access to Australian and international agricultural markets, approximately 200 km east of Laverton in WA and include a JORC Compliant Exploration Target. The Projects cover more than 3,000 km<sup>2</sup> and contain over 400km<sup>2</sup> of salt lake playa and 375 km of interpreted palaeochannels (ancient underground rivers) all highly prospective for brine hosted SOP.

INVESTOR PRESENTATION  
MAY 2020

# SULPHATE OF POTASH

Exploring and developing  
a new high-grade  
discovery in WA

Keren Paterson  
Managing Director & CEO





# OUR MISSION

We're helping to secure the world's most nutritious food sources by exploring and developing long-life, low-cost, primary sources of organic Sulphate of Potash (SOP).



# POSITIONED TO RAPIDLY RESPOND TO GROWING DEMAND FOR HIGH-QUALITY FERTILISERS

100% ownership of two solar Sulphate of Potash projects located near Laverton in Western Australia:

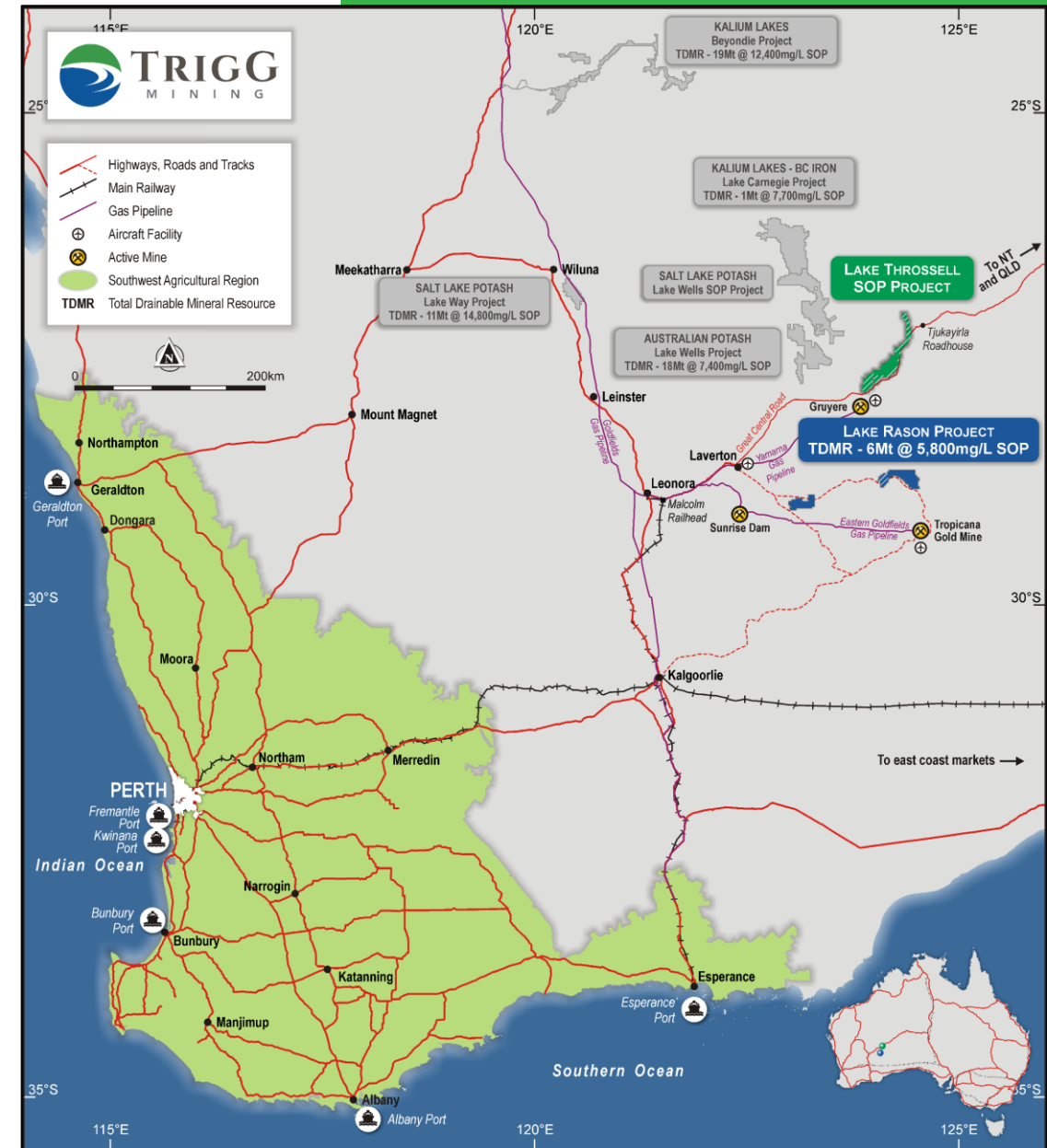
- 1 Lake Throssell SOP Project  
High-grade results of up to 14,800mg/L SOP from inaugural sampling.
- 2 Lake Rason SOP Project  
Inferred Mineral Resource of 6Mt SOP<sup>1</sup>.

Over 1,660km<sup>2</sup> of strategic tenure located close to energy and transport infrastructure.

Over 380km<sup>2</sup> of playa lakes and 170km of paleochannels – all prospective for SOP mineralization.


Experienced and passionate team successful in finding, developing and operating sustainable mines in Western Australia.

<sup>1</sup>: See Competent Person Statement.



Total Drainable Mineral Resources (TDMR): ASX announcements - Australian Potash (05/08/2019), Salt Lake Potash (11/10/2019), Kalium Lakes (04/09/2018 and 27/07/2018) and Trigg Mining (02/03/2020). All figures are rounded.





# WHY SULPHATE OF POTASH

# WHAT IS SULPHATE OF POTASH (SOP)?

SOP (Potassium Sulphate,  $K_2SO_4$ ) is an essential fertiliser for high-value, chloride sensitive crops such as fruit, vegetables, avocados, coffee beans, grapes, tree nuts, cocoa, anything grown under glass and in arid and acidic soils.

## POTASSIUM

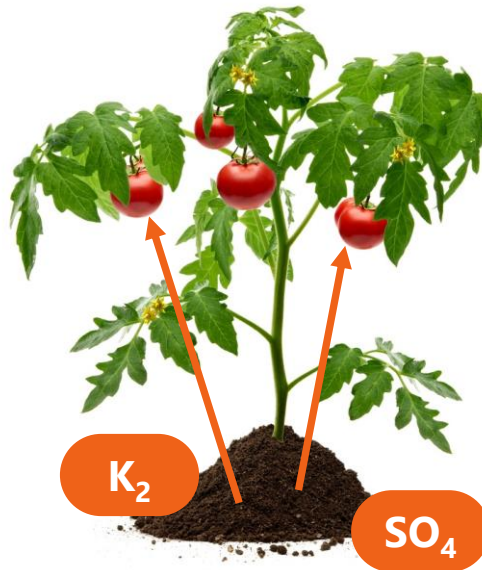
( $K_2$ )

- › Essential for all living things
- › Promotes resistance to disease, drought and frost
- › Improves quality, taste and appearance
- › Required in large quantities for proper plant growth and optimal crop yields

## SULPHATE ( $SO_4$ )

SULPHUR + OXYGEN

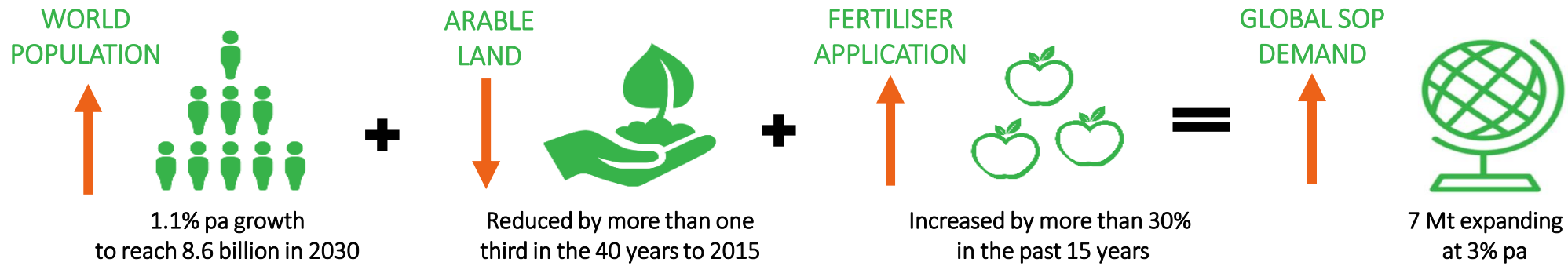
- › Necessary for the formation of chlorophyll and plant proteins
- › Increases crop yields and produce quality



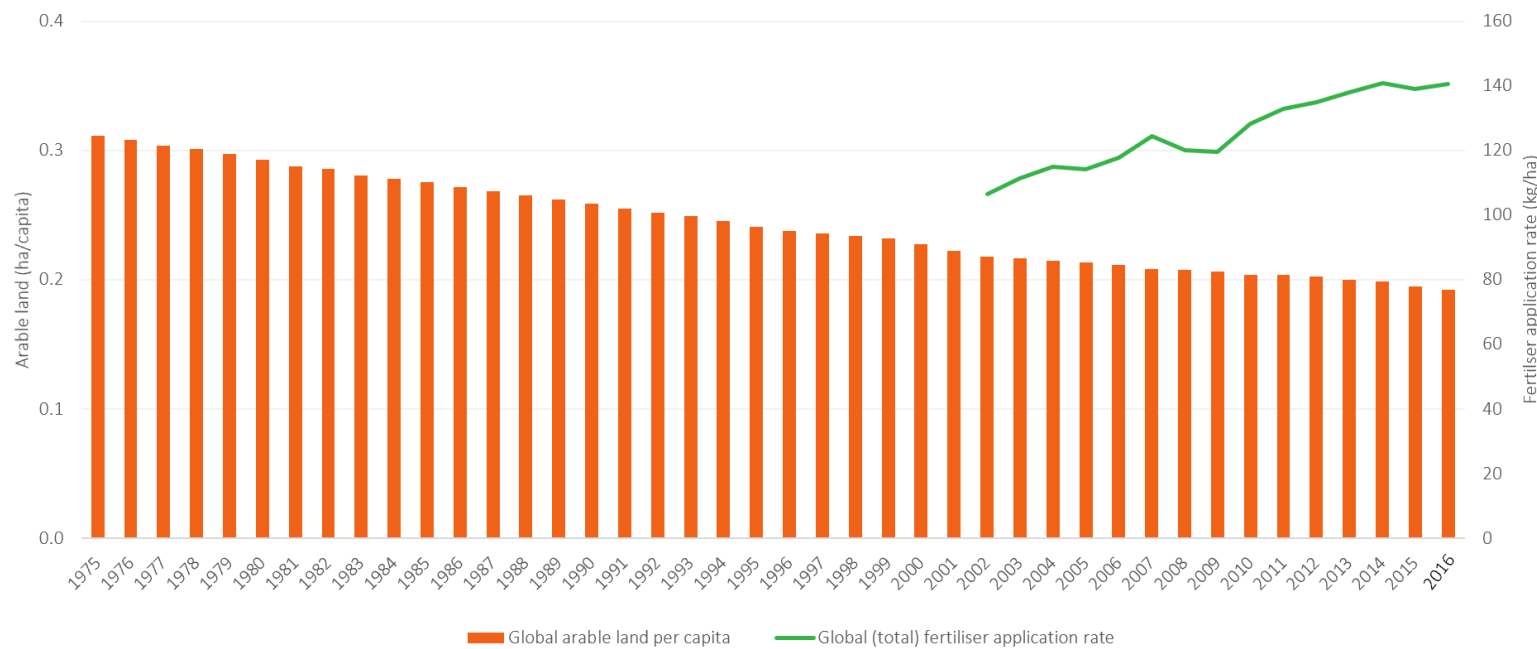
## Vs. MURIATE OF POTASH (MOP)

Muriate of Potash (Potassium Chloride) is a cheaper, more abundant source of potash, BUT it contains almost 50% chloride which is detrimental to chloride-sensitive crops and arid soils. It also contains no sulphur.

# STEADY DEMAND GROWTH DRIVEN BY MEGA TRENDS



Global arable land and fertiliser application rates

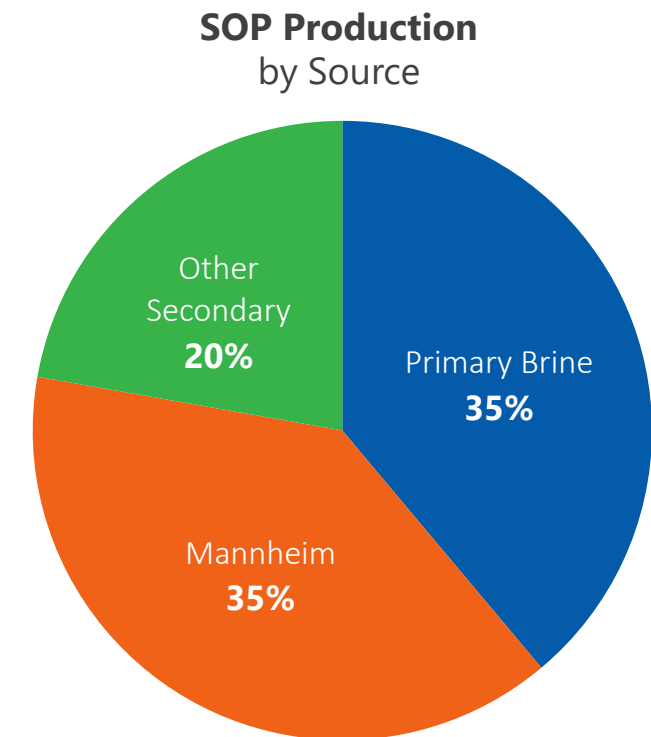
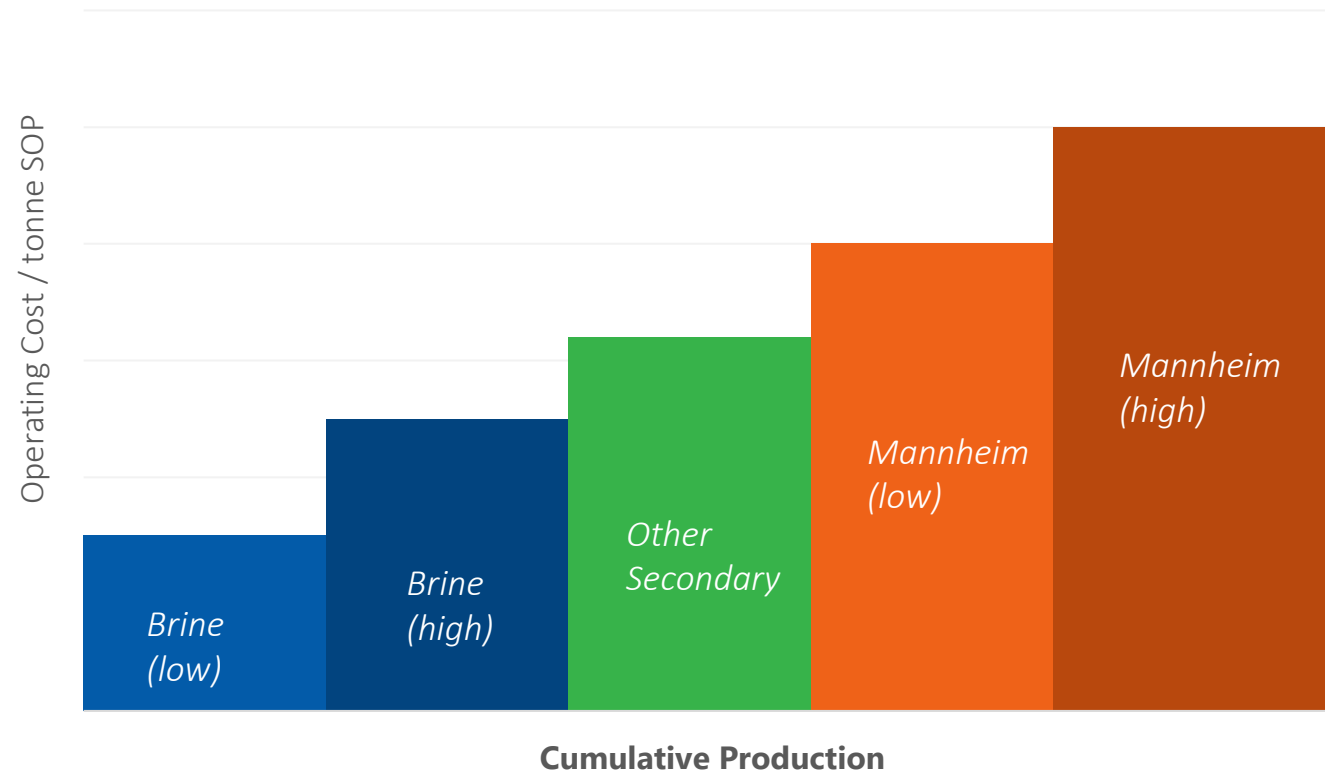


Sources: United Nations, World Bank CRU



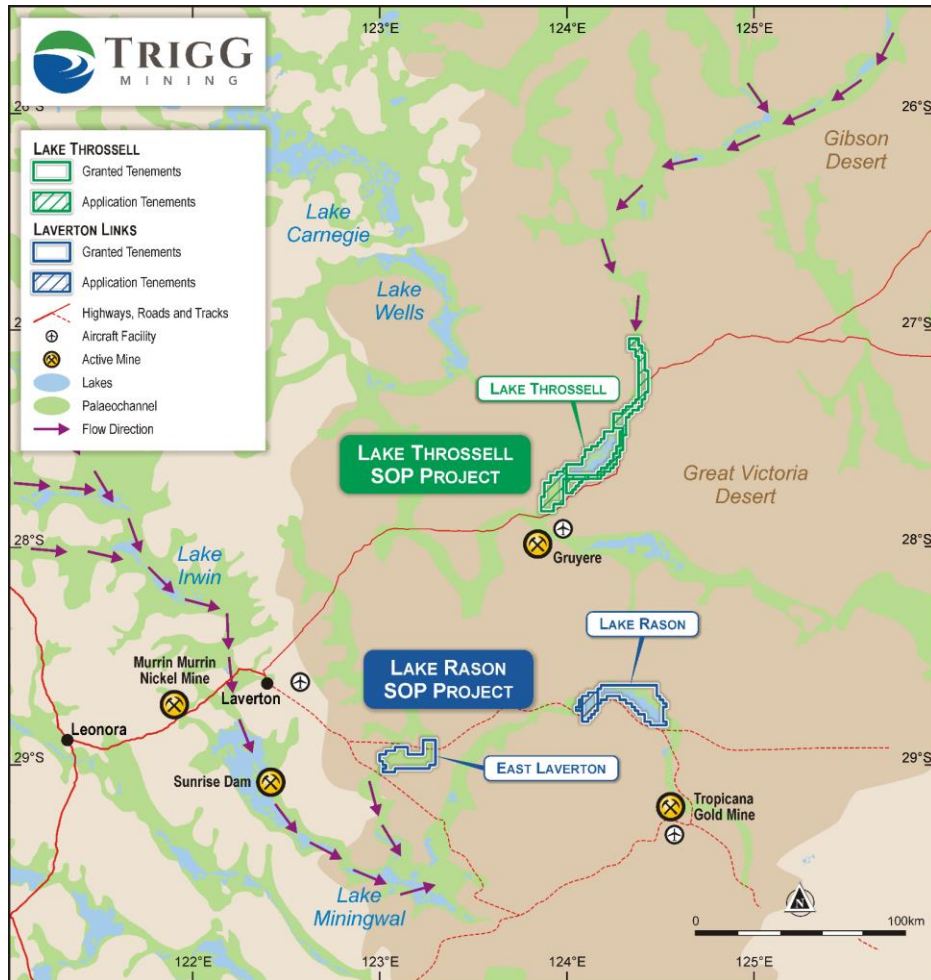
## BRINE SOP – LOWEST COST PRODUCTION

Primary production of SOP from naturally occurring brines is the lowest cost source of SOP but is unable to meet global demand of ~7Mtpa. The Mannheim Process is an energy intensive chemical process producing hydrochloric acid as a waste product, but is needed to meet global demand, creating an industry price floor well-above the cost of brine sources.



# PROJECT GEOLOGY / HYDROGEOLOGY

The Lake Throssell and Laverton Links SOP Projects are located near the terminus of major palaeovalley catchments underlain by high potassium source rocks.



The two Projects lie near the terminus of extensive palaeovalley catchment areas which extend for over 500km and are underlain by potassium-bearing source rocks (granites, sandstones and salt diapirs).

Brine solutions carrying potassium mineralisation have been concentrating in the palaeochannels and salt lakes (evaporite systems) for millions of years.





# OUR RESPONSE TO COVID-19

We have responded quickly and effectively to the COVID-19 pandemic with several appropriate measures implemented...

## EXPLORATION ACTIVITIES

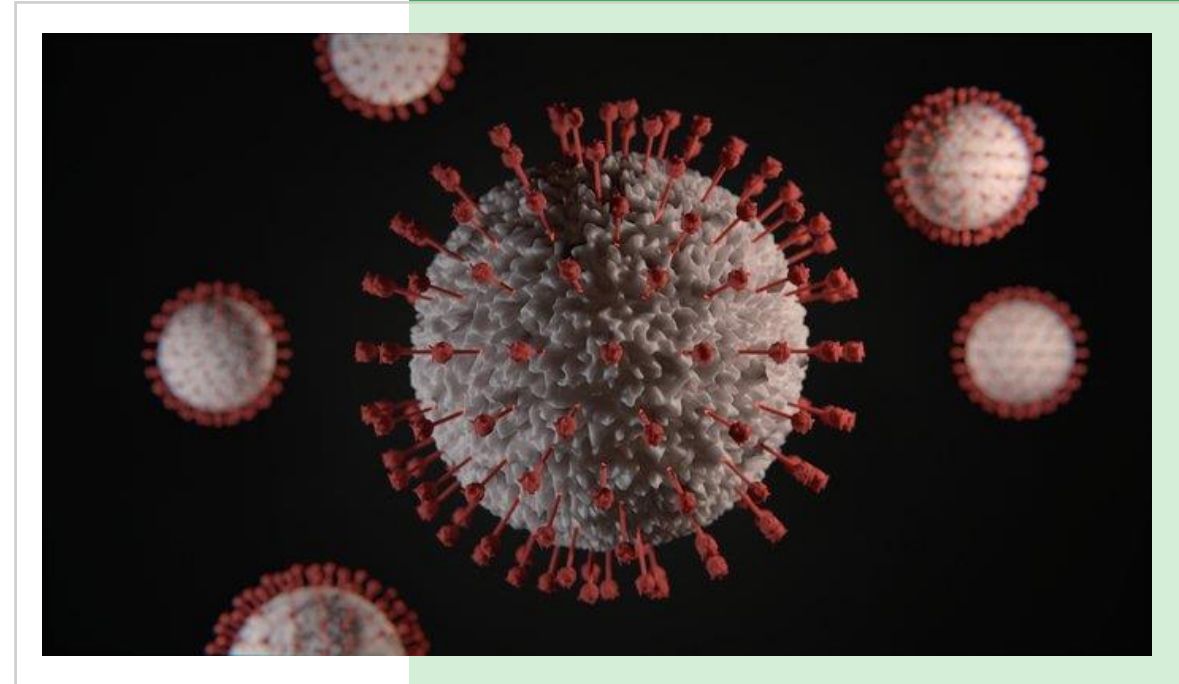
- Field-based exploration activities at Lake Throssell suspended to comply with State Government travel restrictions and the request of our Traditional Owners.
- Non-core tenure rationalised with our total footprint now 1,660km<sup>2</sup>.

## CORPORATE RESPONSE

- Directors' fees, staff and consultants' costs significantly reduced.
- Other outgoings reduced.
- Strong cash position with \$2m cash (31/03/2020).

## PREPARING FOR THE RECOVERY

- Preparations continuing for Lake Throssell drilling program.
- Program of Work (PoW) approved.
- Working with the Traditional Owners on a plan to return to the field when restrictions are lifted.

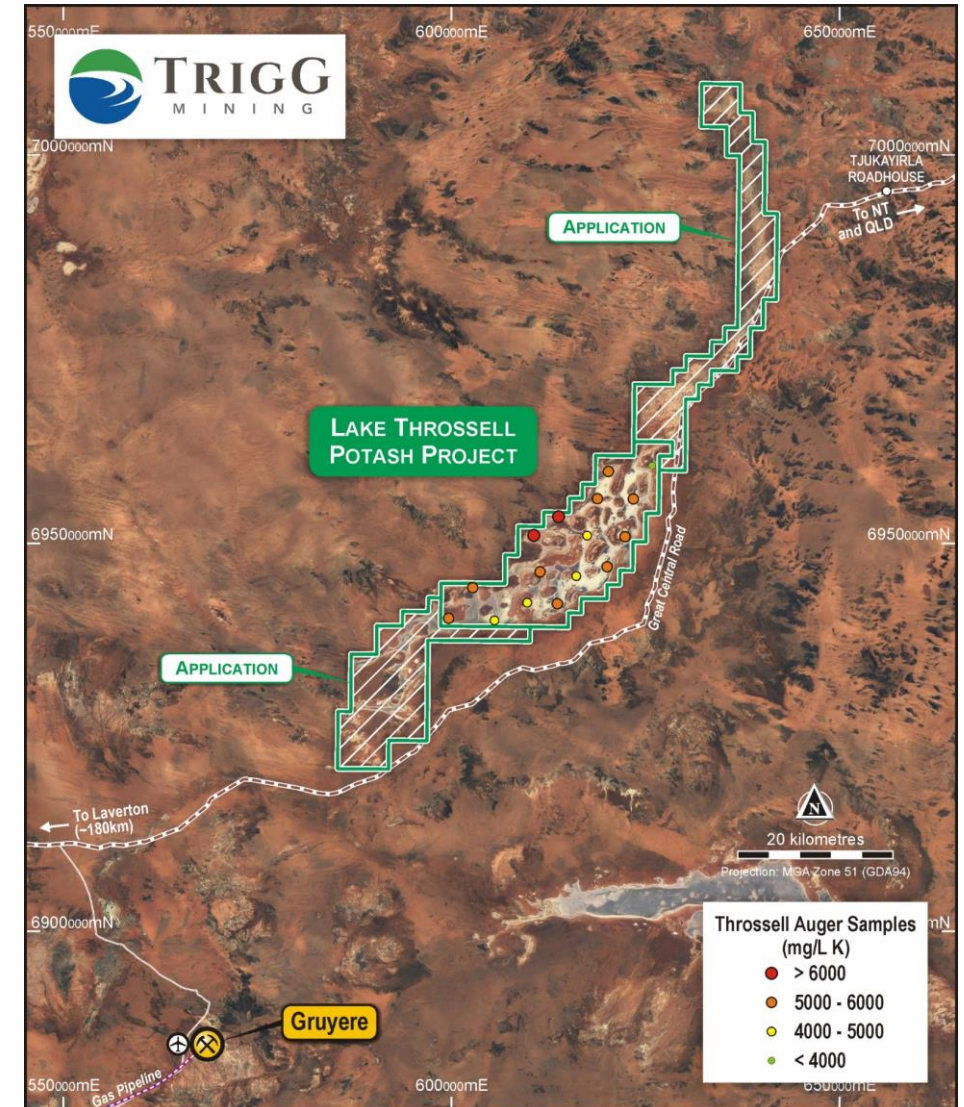


# LAKE THROSSELL SULPHATE OF POTASH PROJECT

The Lake Throssell Project covers an area of 868km<sup>2</sup> including 106km of interpreted palaeochannel.

## HIGH GRADE DISCOVERY

- Maiden hand-auger sampling program:
  - 16 sample results averaged 11,800 mg/L Sulphate of Potash (SOP) with grades of up to 14,800 mg/L SOP – one of the highest grade new SOP discoveries in Australia.
  - Holes rapidly filled with brine from 30-70 cm below surface.

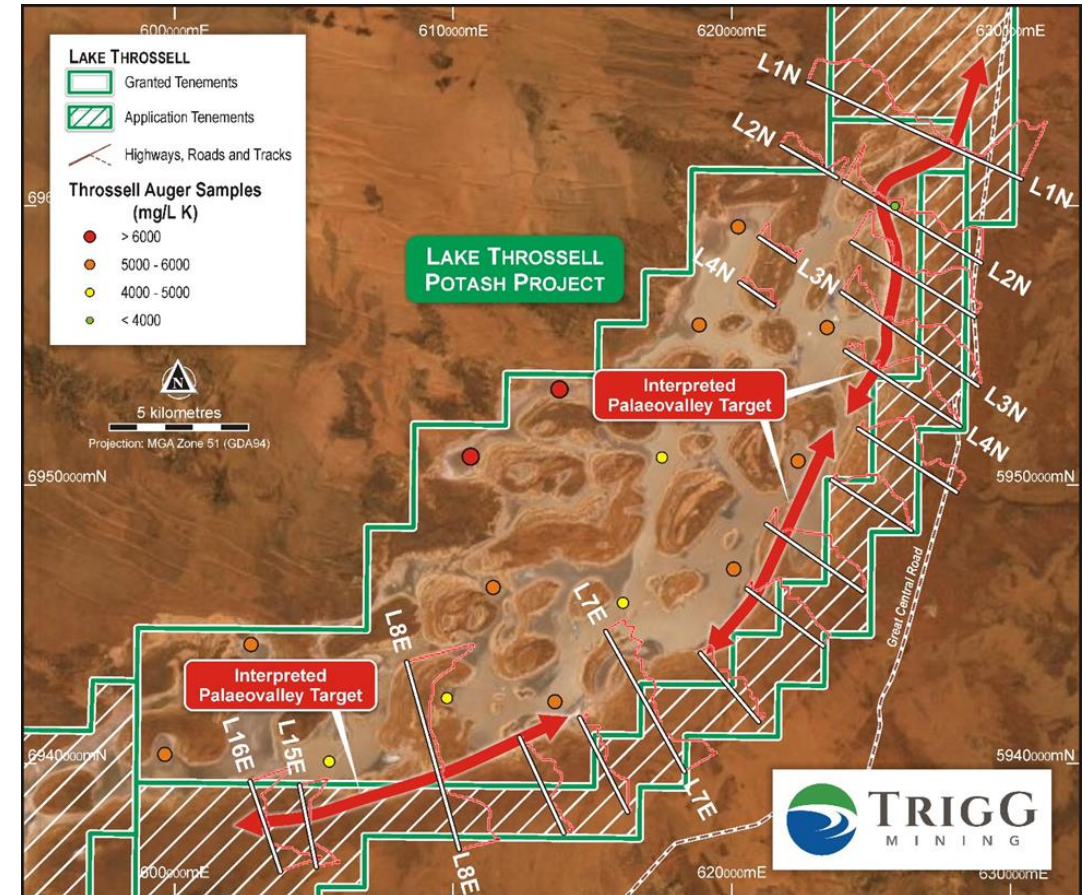




# LAKE THROSSELL SULPHATE OF POTASH PROJECT

## GRAVITY CONFIRMED PALAEOVALLEY TARGETS

- Several interpreted palaeovalley positions underlying the playa were identified by the ground gravity survey.  
*These channels have strong potential to host large-scale SOP endowment.*
- Planned inaugural drilling program to test the underlying basal aquifer
  - Up to 30 off-lake air core holes
  - PoW is approved
  - Awaiting the lifting of the COVID-19 travel restrictions.
  - Anticipate calculation of an Inferred Mineral Resource, subject to drilling results.

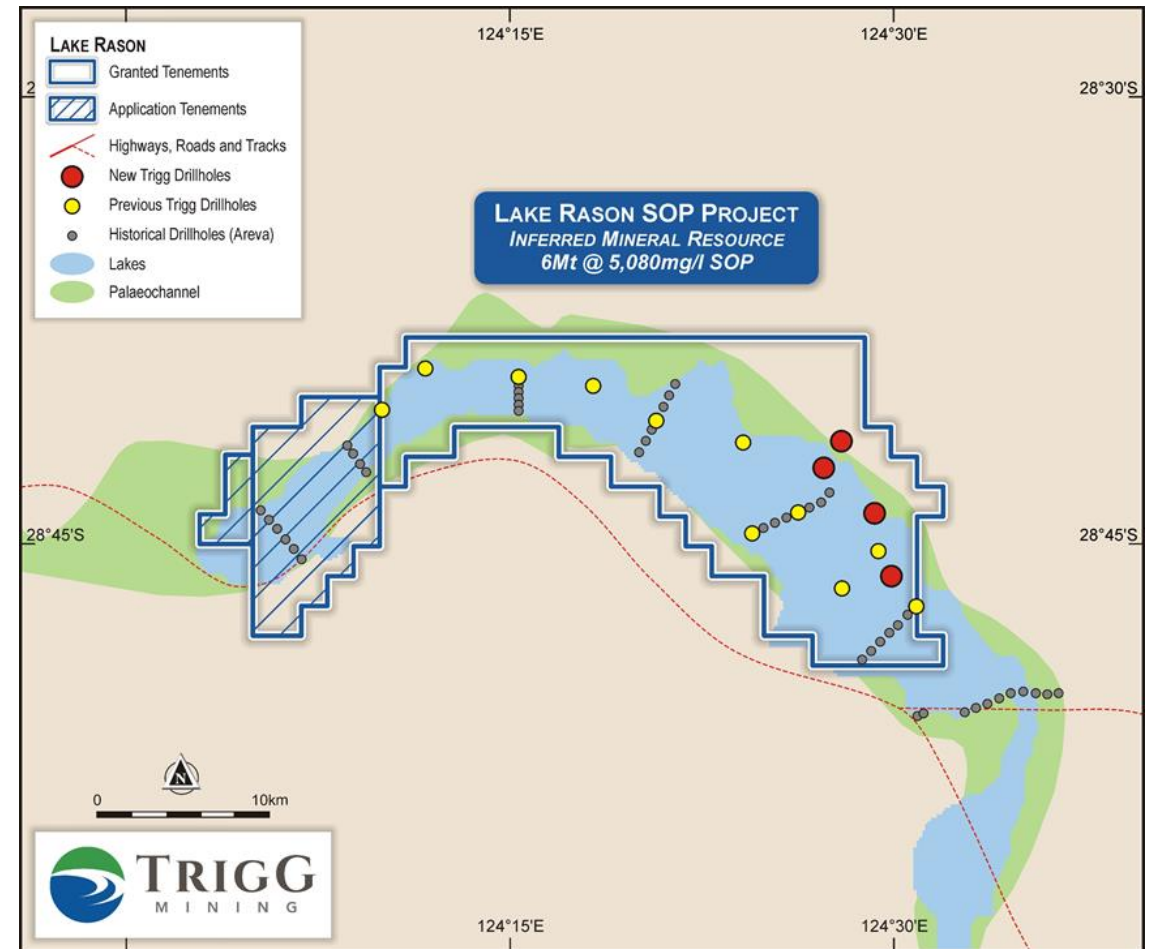


# LAKE RASON SULPHATE OF POTASH PROJECT

The Lake Rason Project covers 500km<sup>2</sup> including 194km<sup>2</sup> of playa lake and 64km of interpreted palaeochannel.

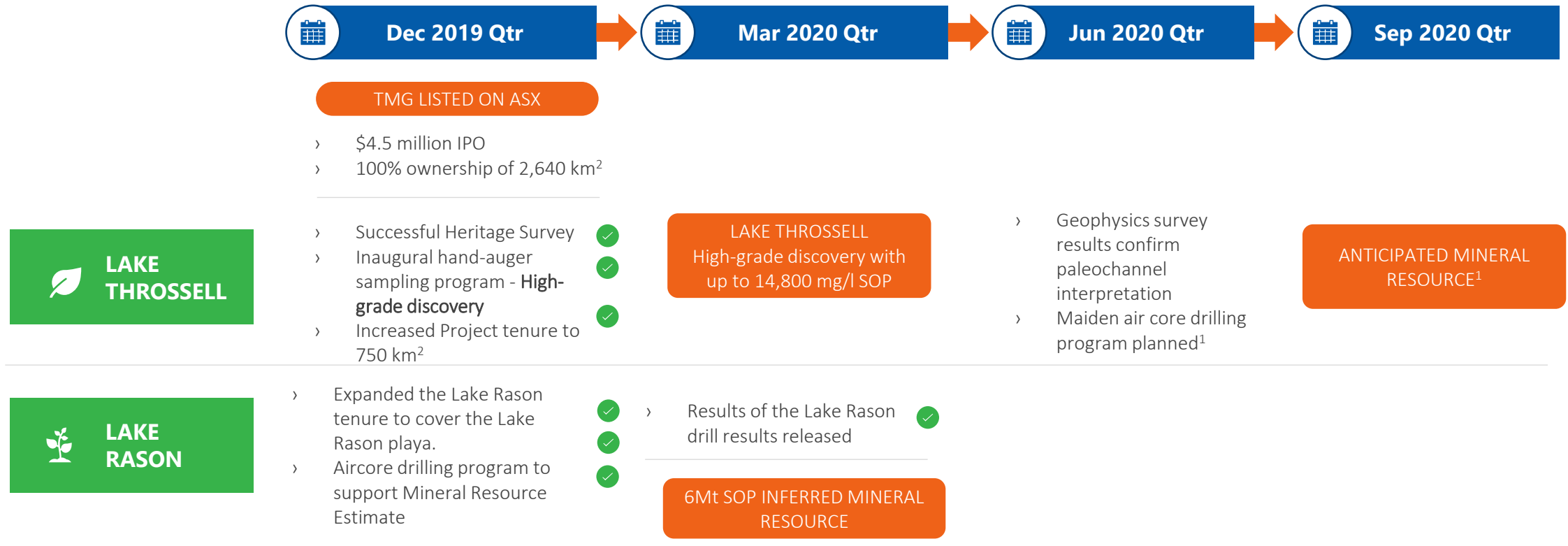
## POTENTIAL SATTELITE PROJECT

- Inferred Mineral Resource of **6Mt @ 5,080 mg/L SOP**<sup>1</sup>.
- Potential to increase the volume and grade to the west within new tenement applications with the westernmost hole (LRTAC001) returning results of up to 6,645 mg/L SOP.





# NIMBLE PROJECT ADVANCEMENT FROM IPO TO MAIDEN RESOURCE



# TRIGG MINING LIMITED (ASX:TMG)

## BOARD OF DIRECTORS AND EXECUTIVE LEADERSHIP



**Keren Paterson**  
*Managing Director & CEO*

BEng (Mining) MBA AdvDipCorpGov FAusIMM MAICD  
WA First Class Mine Manager  
A recognised mining industry leader with more than 20 years' international experience spanning the mining value chain - from green-fields exploration through to mine development, operations management, M&A and mining services.



**Mike Ralston**  
*Non-Executive Chairperson*

BComm ACMA  
Experienced mining executive, company director and former managing director of an ASX listed resource company, experienced in corporate management and finance.



**Bill Bent**  
*Non-Executive Director*

BSc (Chem Eng) MBA  
Experienced corporate advisor, chemical engineer and former managing director of an ASX listed resources company.



**Karen Logan**  
*Company Secretary*

BCom Grad DipAppCorpGov FCIS FGIA FFin GAICD  
Chartered Company Secretary with extensive compliance, capital raising, M&A and IPO experience.



**Neil Inwood**  
*Technical Manager*

Bsc (Geol), PGradDip(Hydro), MSc(Geol), FAusIMM  
+25 years international experience in mining, exploration geology, project management and review. CP for the ASX and QP for the TSX.



**Jason Cherry**  
*Exploration Manager*

MSc, BSc, MAIG  
+15 years international experience leading exploration programs in potash, uranium, gold and base metals with significant experience exploring palaeochannel systems.

## CAPITAL STRUCTURE

### Fully Paid Ordinary Shares

Quoted 40,200,000

Escrowed 17,787,500

**Total Fully Paid Ordinary Shares 57,987,500**

Share Price (13/05/20) \$0.08

Cash (31/03/20) \$2 million

**Market Capitalisation \$4.6 million**

20c Options (listed & unlisted) 30,137,500

25c Options (unlisted) 2,000,000

Performance Rights vesting on significant milestones 4,235,626

### Shareholders

Directors and Management 20%



# WHY INVEST IN TRIGG MINING?

- ✓ Strong global market and demand fundamentals driven by global mega trends
- ✓ Low-risk jurisdiction – Western Australia
- ✓ Strategic landholding – 100% rights to 1660km<sup>2</sup> of tenure across two SOP Projects
- ✓ Well supported by infrastructure – roads, rail, airports and two gas pipelines
- ✓ Lake Throssell - **High-grade discovery** follow-up drilling planned
- ✓ Lake Rason – 6Mt Inferred Mineral Resource
- ✓ Highly leveraged to growth
- ✓ A motivated and experienced team, driven to deliver value for shareholders



---

# Disclosures and Disclaimers

## Cautionary Statement

This presentation (Presentation) is for informational purposes only and is not a prospectus, disclosure document or offer document under the Corporations Act 2001 (Cth) (Corporations Act) or any other law. This Presentation does not constitute, and is not to be construed as, an offer to issue or sell, or a solicitation of an offer or an invitation to subscribe for, buy or sell securities in Trigg Mining Limited ACN 168 269 752 (TMG).

This Presentation does not contain, and does not purport to contain, all information that recipients may require to make an informed assessment of TMG or its securities. Statements in this Presentation are made only as at the date of this Presentation unless otherwise stated and remain subject to change without notice. Neither TMG nor any of its directors, officers, employees, agents or consultants makes any representation or warranty, express or implied, as to the fairness, reliability, accuracy or completeness of the information contained in this Presentation, or as to any omission from this Presentation. To the maximum extent permitted by law, each such person disclaims any liability (including by reason of negligence or negligent misstatement) in relation to this Presentation, the information contained in it, or any omissions from it. To the maximum extent permitted by law, each such person also disclaims any responsibility to inform any recipient on any matter which subsequently comes to their notice which may affect the information contained in this Presentation, and undertakes no obligation to provide any additional or updated information whether as a result of new circumstances, future events or results or otherwise.

## Forward Looking Statements

This Presentation contains 'forward-looking information' that is based on TMG's expectations, estimates and projections as of the date on which the statements were made. This forward-looking information includes, among other things, statements with respect to prefeasibility and definitive feasibility studies, TMG's business strategy, plans, development, objectives, performance, outlook, growth, cash flow, projections, targets and expectations, mineral reserves and resources, results of exploration and related expenses. Generally, this forward-looking information can be identified by the use of forward-looking terminology such as 'outlook', 'anticipate', 'project', 'target', 'potential', 'likely', 'believe', 'estimate', 'expect', 'intend', 'may', 'would', 'could', 'should', 'scheduled', 'will', 'plan', 'forecast', 'evolve' and similar expressions. Persons reading this Presentation are cautioned that such statements are only predictions, and that TMG's actual future results or performance may be materially different. Forward-looking information is subject to known and unknown risks, uncertainties and other factors that may cause TMG's actual results, level of activity, performance or achievements to be materially different from those expressed or implied by such forward-looking information. Forward-looking information is developed based on assumptions about such risks, uncertainties and other factors set out herein, including but not limited to the risk factors set out in Section 13 of the prospectus dated 24 April 2019. A copy of the prospectus may be viewed online at [www.triggmining.com.au](http://www.triggmining.com.au)

## Competent Person Statement

For information referring to the exploration results in this document, refer to the prospectus and announcements dated 16/12/2019, 29/01/20, 02/03/20 and 26/03/20. The Company confirms that it is not aware of any new information or data that materially affects the information included in the original market announcements and, in the case of estimates of Mineral Resources, Exploration Target or Ore Reserves that all material assumptions and technical parameters underpinning the estimates in the relevant market announcement continue to apply and have not materially changed. The Company confirms that the form and context in which the Competent Person's findings are presented have not been materially modified from the original market announcements; and that the information in the announcement relating to exploration results is based upon, and fairly represents the information and supporting documentation prepared by the named Competent Persons.





[info@triggmining.com.au](mailto:info@triggmining.com.au)  
[www.triggmining.com.au](http://www.triggmining.com.au)

## APPENDIX – LAKE RASON INFERRED MINERAL RESOURCE

Aquifer Type	Volume (10 <sup>6</sup> m <sup>3</sup> )	Total Porosity (-)	Brine Volume (10 <sup>6</sup> m <sup>3</sup> )	Specific Yield (-)	Drainable Brine Volume (10 <sup>6</sup> m <sup>3</sup> )	K Grade (mg/l)	SO <sub>4</sub> Grade (mg/l)	SOP Grade (mg/l)	Drainable Brine SOP Mass (Mt)	Total Brine SOP Mass (Mt)
Surficial	3,060	0.40	1220	0.10	306	2,290	21,400	5,100	1.56	6.23
Mixed	5,020	0.38	1910	0.07	351	2,330	20,900	5,200	1.83	9.91
Crete	230	0.30	70	0.10	23	2,390	21,900	5,320	0.12	0.36
Basal Sand	1,020	0.30	310	0.21	214	2,390	22,600	5,330	1.14	1.63
Saprolite	2,800	0.20	560	0.03	84	2,210	21,000	4,920	0.41	2.76
Saprock	9,310	0.10	930	0.02	186	2,050	21,000	4,570	0.85	4.25
<b>Total Inferred Mineral Resource</b>	<b>21,400</b>		<b>4,990</b>		<b>1,160</b>	<b>2,280</b>	<b>21,400</b>	<b>5,080</b>	<b>5.91</b>	<b>25.2</b>

**Note:** errors may be present due to rounding. Approximately 1.2Mt of Drainable SOP Mass is present in Exploration License Application E38/3437.

Total porosity and total brine SOP mass is provided to compare the total SOP tonnes with the drainable Mineral Resource. As can be seen, the total brine volume is significantly higher than reporting drainable brine volumes. For economic production, the drainable brine volume is the most important volume because only a small proportion of brine present of the total porosity following removal of drainable porosity can be typically abstracted through diffusional processes during recharge of the lake surface.



# APPENDIX – SOP EVAPORATION PROCESS

A globally proven method, harvesting the natural power of the sun to produce SOP.



Pumping from Trenches  
and Bores



Solar Evaporation



SOP Fertiliser



Purification



Harvesting