

ASX ANNOUNCEMENT

29 May 2020

Lake Throssell Sulphate of Potash Project to Receive Significant Infrastructure Boost

Imminent lifting of further travel restrictions clears the way for maiden drilling program

Lake Throssell Sulphate of Potash Project – *new high-grade discovery*

- The Federal and State Governments have this week announced a \$20 million contract to seal a 41km section of the Great Central Road towards Trigg's high-grade Lake Throssell SOP project.
 - The road project is designed to provide interstate connectivity for the freight industry, tourists, and communities and also represents a **significant access benefit to Trigg's flagship Lake Throssell SOP Project**.
 - The Great Central Road passes through the Lake Throssell tenements, and the road project will significantly enhance project access, future logistics and transport of people, equipment, materials and product to the regional centre of Laverton.
- The imminent lifting of further COVID-19 travel restrictions within Western Australia is also a positive for the Project and clears the way for the Company's maiden air-core drilling program to commence next quarter.
- Several interpreted palaeovalley positions identified by a recent ground gravity survey - underlying the high-grade SOP discovery of up to 14,800mg/L (refer announcement 16 December 2019). These channels have strong potential to host large-scale SOP endowment. POW approval for the air-core drilling program to test this potential is already in place.
- The Q1 FY21 exploration program is expected to underpin a potential maiden JORC Mineral Resource, subject to results.

Trigg Mining Limited (ASX: TMG) (Trigg or the Company) is pleased to provide an update on recent positive developments and planned upcoming activities at its 100%-owned Lake Throssell Sulphate of Potash Project in Western Australia (Figure 1).

Regional Infrastructure Developments

Earlier this week, the WA State Government and Federal Government announced the award of a \$20 million contract to Wongutha Way Alliance, a joint venture between CareyMC Pty Ltd and Central Earthmoving Company Pty Ltd, to seal a 41km section of the Great Central Road.

The Great Central Road is a key arterial route that runs from Leonora and Laverton, adjacent to and through the Lake Throssell tenements, and onwards through the Northern Territory to Winton in Queensland. The contract is aimed at providing interstate connectivity for tourists, communities and the freight industry, provide support for the regional economy, and forms part of a longer term planned upgrade of the “Outback Way”.

This Project will ultimately create Australia’s third Transcontinental Highway, providing a sealed route from Western Australia to Winton in Queensland, and reduce transport and logistics time and cost between the two important centres of mining and agriculture.

The Great Central Road Project is a jointly funded initiative between the Australian Government (\$37.2 million commitment) and the West Australian Government (\$9.3 million).

The road improvement project represents a significant benefit to the future development of the Lake Throssell SOP Project, and is expected to significantly improve project access and future logistics in terms of the transport of people, equipment, materials and product to and from the Project.

COVID-19 Travel Restrictions and Exploration Update

The WA Government has recently announced a further phased lifting of intrastate travel restrictions.

This is expected to clear the way for the resumption of field activities and the Company’s maiden exploration air-core drilling program. Meetings are scheduled with the Ngaanyatjarra, the Traditional Owners of the Lake Throssell Project to discuss access arrangements for the Company’s field exploration teams.

Subject to the outcome of those discussions, field exploration activities including the maiden drilling program at Lake Throssell targeting a JORC resource, subject to results, could commence early in the next quarter (Q1 FY21).

In the event of any unexpected delays, the Company’s exploration team is also considering including a limited helicopter-supported exploration program which will allow it to progress the next phase of activity in the short term.

As announced on 7 May 2020, a recent gravity survey at Lake Throssell has defined several targets (Figure 2) which are highly prospective for high-grade Sulphate of Potash (SOP) endowment within the palaeochannel. **Trigg believes that these targets have strong potential for large-scale SOP mineralisation, particularly given that similar systems in the region are currently subject to mining studies.**

The upcoming drilling program at Lake Throssell is designed to establish if the tenor of surface mineralisation, averaging 11,800mg/L SOP and up to 14,800 mg/L SOP¹, can be reproduced in the sub-surface aquifer (as is the case at the Company’s Lake Rason SOP Project which has an Inferred Mineral Resource of 6Mt of SOP, located further to the south).

The off-lake ground gravity survey undertaken in March 2020 (Figure 2) identified several strong indicators of a palaeovalley underneath the lake surface and potentially extending into the new tenement applications to the north and south of the main playa area. This interpreted aquifer system will be targeted with up to 30 off-lake air-core drill holes as soon as project access is re-established.

CEO Webinar Presentation

Trigg Mining Managing Director Keren Paterson recently presented an update of the Company’s activities at the Share Café Hidden Gems Webinar. A recording of this well-received presentation can be accessed at the following link:

<https://www.sharecafe.com.au/2020/05/25/trigg-mining-sharecafe-hidden-gems-webinar-presentation/>

¹ Refer ASX announcement 16 December 2019

Management Comment

Trigg Mining's Managing Director, Keren Paterson, said: "This week's announcement from the WA Government regarding upgrades to the Great Central Road further highlight the outstanding position of the Lake Throssell Sulphate of Potash Project in a world-class mining province just east of Laverton, with high-quality infrastructure and excellent access. The Great Central Road runs adjacent to and right through our tenements, so we are delighted to see this investment in upgrading and enhancing this key piece of regional transport infrastructure."

"On other fronts, with the phased lifting of COVID-19 travel restrictions, our exploration team is hard at work preparing for the maiden air-core program at Lake Throssell. The Program of Work is approved by the Department of Mines, Industry Regulation and Safety, and we are meeting with the Traditional Owners to agree a forward pathway. All going well, we hope to be back in the field within weeks and on the ground drilling in July. We also have contingency plans in place in the event of any unexpected delays, and we look forward to keeping the market informed as our plans progress in the days and weeks ahead."

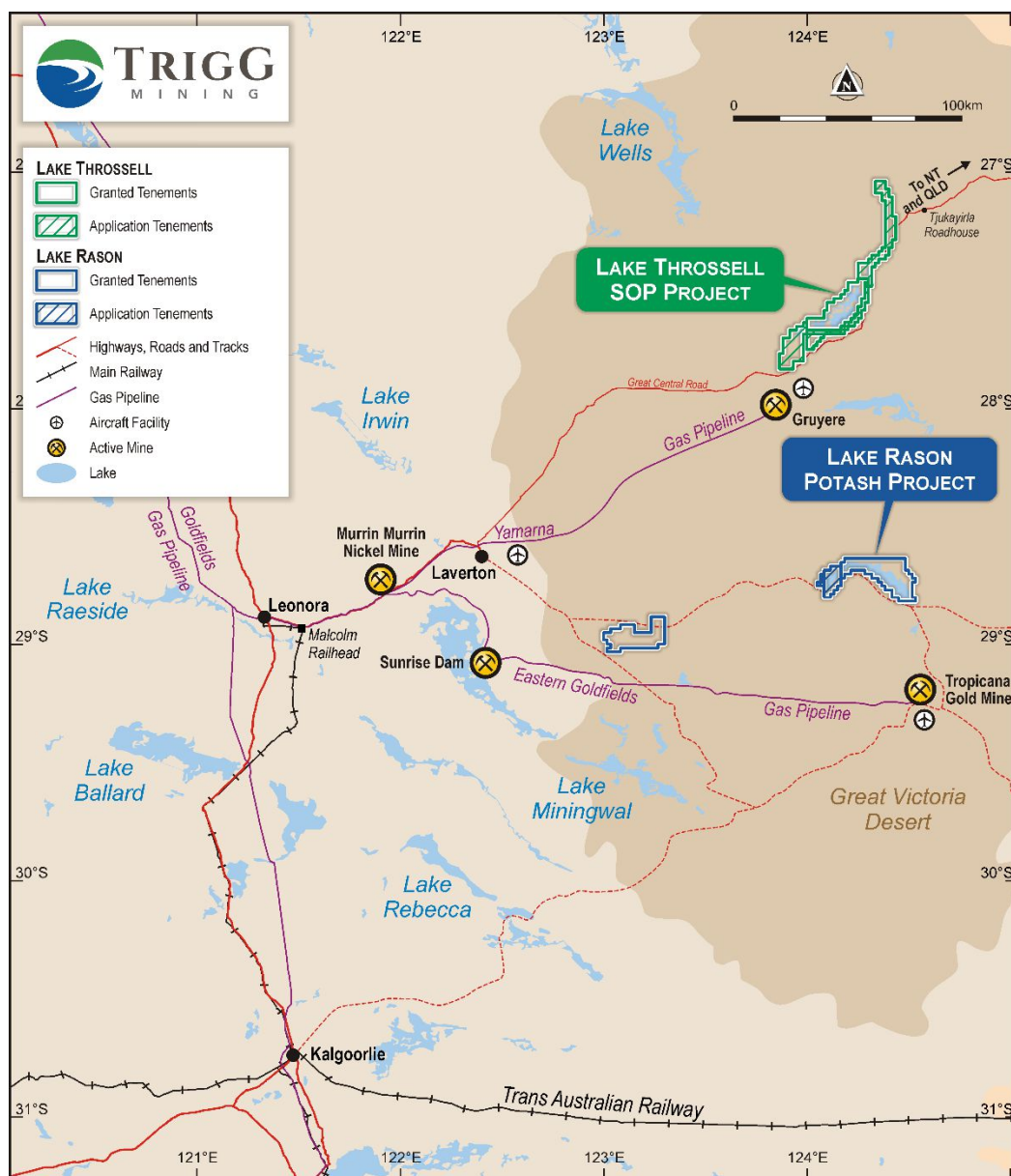


Figure 1: Location of Trigg Mining's SOP Projects showing established infrastructure

The Lake Throssell Sulphate of Potash Project forms the cornerstone of Trigg Mining's plans to establish a significant SOP production hub in the Laverton District.

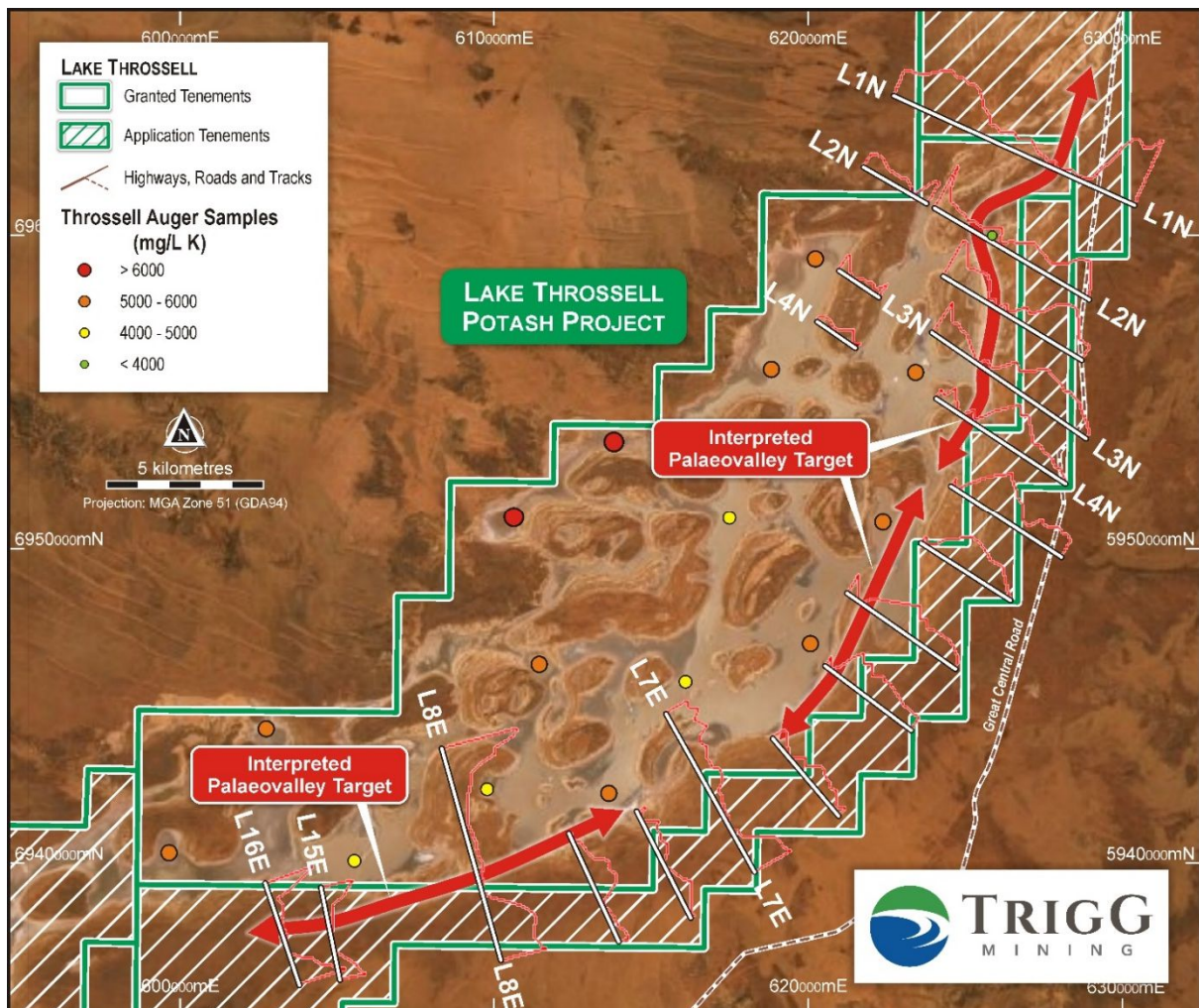


Figure 2: Lake Throssell Interpreted Palaeovalley Targets

Authorised by:

Keren Paterson

Keren Paterson
Managing Director
Trigg Mining Limited

For more information please contact:

Keren Paterson
Managing Director
Trigg Mining Limited
(08) 9220 2231
info@triggmining.com.au

Nicholas Read
Investor and Media Relations
Read Corporate
(08) 9388 1474
nicholas@readcorporate.com.au

About Trigg Mining

Trigg Mining is looking to secure Australia's sustainable agriculture future through the exploration of essential potassium fertiliser, sulphate of potash (SOP), necessary for global food production and human nutrition. SOP provides essential macro nutrients for plant growth without any detrimental elements, such as chloride found in muriate of potash (MOP). In addition, SOP can be produced sustainably through the solar evaporation of potassium-rich hypersaline brine water, without the need for large open pits or waste-rock dumps.

The Trigg Mining SOP Projects are located nearby established energy and transport infrastructure for access to Australian and international agricultural markets, approximately 170km east of Laverton in WA and including the high-grade discovery at Lake Throssell and a JORC Compliant Mineral Resource at Lake Rason. The Projects cover 1,660km² and contain over 380km² of salt lake playa and 170km of interpreted palaeochannels (ancient underground rivers) all highly prospective for brine hosted SOP.

Competent Person Statement

The information in this announcement that relates to exploration results is based upon information compiled by Mr Neil Inwood, as Trigg's Technical Manager. Mr Inwood is a Fellow of the Australasian Institute of Mining and Metallurgy and has sufficient experience which is relevant to the style of mineralisation and type of deposit under consideration and to the activity which he is undertaking to qualify as a Competent Person as defined in the 2012 edition of the "Australasian Code for Reporting of Exploration Results, Mineral Resources and Ore Reserves". Mr Inwood consents to the inclusion in the announcement of the matters based upon the information in the form and context in which it appears