

European Metals Holdings Limited

ARBN 154 618 989

Suite 12, Level 1
11 Ventnor Avenue
West Perth WA 6005
PO Box 52
West Perth WA 6872
Phone + 61 8 6245 2050
Fax + 61 6245 2055
Website:
www.europeanmet.com

Directors & Management

David Reeves
Non-Executive Chairman

Keith Coughlan
Managing Director

Richard Pavlik
Executive Director

Kiran Morzaria
Non-Executive Director

Julia Beckett
Company Secretary

Corporate Information

ASX: EMH

AIM: EMH

Frankfurt: E861.F

CDIs on Issue: 154.7M



EUROPEAN METALS

16 June 2020

PRELIMINARY MINING PERMIT AT CINOVEC GRANTED

100% OF CINOVEC ORE RESERVE NOW COVERED BY PMP'S

European Metals Holdings Limited ("**European Metals**" or the "**Company**") is pleased to advise that the Czech Ministry of the Environment has granted Geomet an updated Preliminary Mining Permit related to the Eastern part of the Cinovec deposit.

The permit has been issued for a period of 8 years. A Preliminary Mining Permit is a necessary legal pre-qualification before obtaining a Final Mining Permit and guarantees the Company the priority right to apply for and obtain a Final Mining Area and a Final Mining Permit.

The approval for the Cinovec-East Preliminary Mining Permit of the deposit covers an area of 0.201 km² and, together with the existing Preliminary Mining Permits, encompasses the entire Cinovec ore reserve with Preliminary Mining Permits. There are three Preliminary Mining Permits issued with medium-term validity periods; Cinovec Northwest and Cinovec-East are valid until 2028 and Cinovec-South until 2025.

The Company intends to amalgamate all three Preliminary Mining Permits into a single Preliminary Mining Permit as a pre-requisite for a single Final Mining Area and Final Mining Permit to simplify the development of the mine.

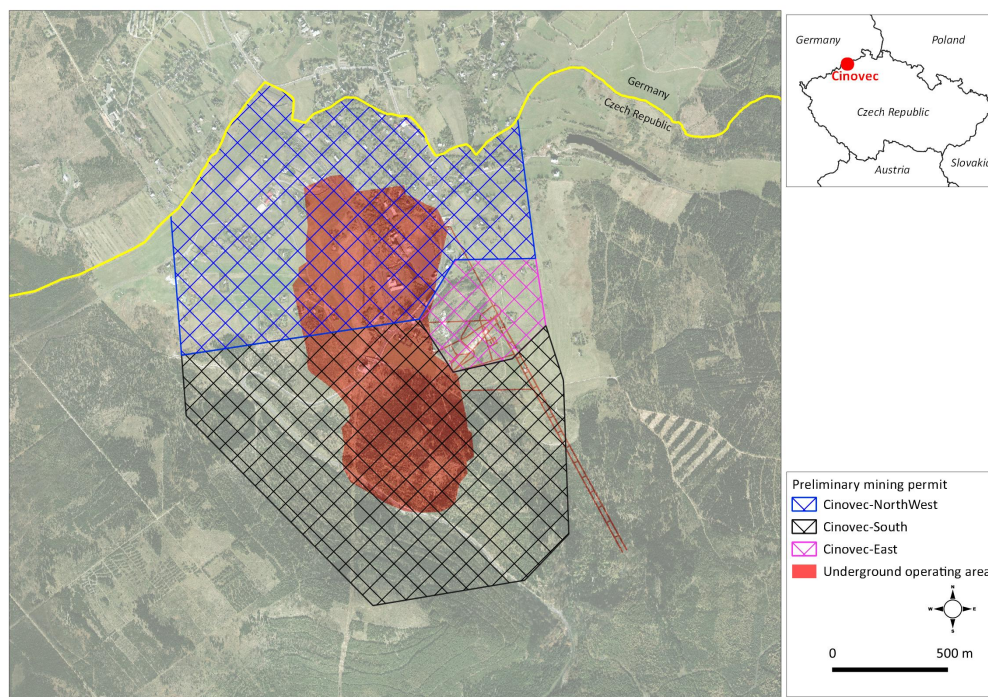


Figure 1: Preliminary Mining Permit – Cinovec Project

European Metals Managing Director Keith Coughlan said, “This PMP renewal confirms the rapid advancement of permitting of the Cinovec Project. There has been a significant increase in the financial and political support for the development of a battery industry in the EU in recent months and a renewed focus on the development of local supply chains. Cinovec is by far the largest hard rock lithium resource in the EU, containing in excess of 65% of the known total resources. This fact, together with the advanced state of the Project, the low cost profile, and the significant support of its major shareholder places the Project ideally to supply battery grade lithium products into the European Battery Industry.”

BACKGROUND INFORMATION ON CINOVEC

PROJECT OVERVIEW

Cinovec Lithium/Tin Project

Geomet s.r.o. controls the mineral exploration licenses awarded by the Czech State over the Cinovec Lithium/Tin Project. Geomet s.r.o. is owned 49% by European Metals and 51% by CEZ a.s. through its wholly owned subsidiary, SDAS.

Cinovec hosts a globally significant hard rock lithium deposit with a total Indicated Mineral Resource of 372.4Mt at 0.45% Li₂O and 0.04% Sn and an Inferred Mineral Resource of 323.5Mt at 0.39% Li₂O and 0.04% Sn containing a combined 7.22 million tonnes Lithium Carbonate Equivalent and 263kt of tin reported 28 November 2017 (**Further Increase in Indicated Resource at Cinovec South**). An initial Probable Ore Reserve of 34.5Mt at 0.65% Li₂O and 0.09% Sn reported 4 July 2017 (**Cinovec Maiden Ore Reserve – Further Information**) has been declared to cover the first 20 years mining at an output of 22,500tpa of lithium carbonate reported 11 July 2018 (**Cinovec Production Modelled to Increase to 22,500tpa of Lithium Carbonate**).

This makes Cinovec the largest hard rock lithium deposit in Europe, the fourth largest non-brine deposit in the world and a globally significant tin resource.

The deposit has previously had over 400,000 tonnes of ore mined as a trial sub-level open stope underground mining operation.

In June 2019 EMH completed an updated Preliminary Feasibility Study, conducted by specialist independent consultants, which indicated a return post tax NPV of USD1.108B and an IRR of 28.8% and confirmed that the Cinovec Project is a potential low operating cost, producer of battery grade lithium hydroxide or battery grade lithium carbonate as markets demand. It confirmed the deposit is amenable to bulk underground mining. Metallurgical test-work has produced both battery grade lithium hydroxide and battery grade lithium carbonate in addition to high-grade tin concentrate at excellent recoveries. Cinovec is centrally located for European end-users and is well serviced by infrastructure, with a sealed road adjacent to the deposit, rail lines located 5 km north and 8 km south of the deposit and an active 22 kV transmission line running to the historic mine. As the deposit lies in an active mining region, it has strong community support.

The economic viability of Cinovec has been enhanced by the recent strong increase in demand for lithium globally, and within Europe specifically.

There are no other material changes to the original information and all the material assumptions continue to apply to the forecasts.

BACKGROUND INFORMATION ON CEZ

Headquartered in the Czech Republic, CEZ a.s. is an established, integrated energy group with operations in a number of Central and Southeastern European countries and Turkey. CEZ's core business is the generation, distribution, trade in, and sales of electricity and heat, trade in and sales of natural gas, and coal extraction. CEZ Group has 33,000 employees and annual revenue of approximately EUR 7.24 billion.

The largest shareholder of its parent company, CEZ a.s., is the Czech Republic with a stake of approximately 70%. The shares of CEZ a.s. are traded on the Prague and Warsaw stock exchanges and included in the PX and WIG-CEE exchange indices. CEZ's market capitalization is approximately EUR 10.08 billion.

As one of the leading Central European power companies, CEZ intends to develop several projects in areas of energy storage and battery manufacturing in the Czech Republic and in Central Europe.

CEZ is also a market leader for E-mobility in the region and has installed and operates a network of EV charging stations throughout Czech Republic. The automotive industry in Czech is a significant contributor to GDP and the number of EV's in the country is expected to grow significantly in coming years.

CONTACT

For further information on this update or the Company generally, please visit our website at www.europeanmet.com or see full contact details at the end of this release.

COMPETENT PERSON

Information in this release that relates to exploration results is based on information compiled by Dr Pavel Reichl. Dr Reichl is a Certified Professional Geologist (certified by the American Institute of Professional Geologists), a member of the American Institute of Professional Geologists, a Fellow of the Society of Economic Geologists and is a Competent Person as defined in the 2012 edition of the Australasian Code for Reporting of Exploration Results, Mineral Resources and Ore Reserves and a Qualified Person for the purposes of the AIM Guidance Note on Mining and Oil & Gas Companies dated June 2009. Dr Reichl consents to the inclusion in the release of the matters based on his information in the form and context in which it appears. Dr Reichl holds CDIs in European Metals.

The information in this release that relates to Mineral Resources and Exploration Targets has been compiled by Mr Lynn Widenbar. Mr Widenbar, who is a Member of the Australasian Institute of Mining and Metallurgy, is a full-time employee of Widenbar and Associates and produced the estimate based on data and geological information supplied by European Metals. Mr Widenbar has sufficient experience that is relevant to the style of mineralisation and type of deposit under consideration and to the activity that he is undertaking to qualify as a Competent Person as defined in the JORC Code 2012 Edition of the Australasian Code for Reporting of Exploration Results, Minerals Resources and Ore Reserves. Mr Widenbar consents to the inclusion in this report of the matters based on his information in the form and context that the information appears.

CAUTION REGARDING FORWARD LOOKING STATEMENTS

Information included in this release constitutes forward-looking statements. Often, but not always, forward looking statements can generally be identified by the use of forward looking words such as "may", "will", "expect", "intend", "plan", "estimate", "anticipate", "continue", and "guidance", or other similar words and may include, without limitation, statements regarding plans, strategies and objectives of management, anticipated production or construction commencement dates and expected costs or production outputs.

Forward looking statements inherently involve known and unknown risks, uncertainties and other factors that may cause the Company's actual results, performance and achievements to differ materially from any future results, performance or achievements. Relevant factors may include, but are not limited to, changes in commodity prices, foreign exchange fluctuations and general economic conditions, increased costs and demand for production inputs, the speculative nature of exploration and project development, including the risks of obtaining necessary licences and permits and diminishing quantities or grades of reserves, political and social risks, changes to the regulatory framework within which the Company operates or may in the future operate, environmental conditions including extreme weather conditions, recruitment and retention of personnel, industrial relations issues and litigation.

Forward looking statements are based on the Company and its management's good faith assumptions relating to the financial, market, regulatory and other relevant environments that will exist and affect the Company's business and operations in the future. The Company does not give any assurance that the assumptions on which forward looking statements are based will prove to be correct, or that the Company's business or operations will not be affected in any material manner by these or other factors not foreseen or foreseeable by the Company or management or beyond the Company's control.

Although the Company attempts and has attempted to identify factors that would cause actual actions, events or results to differ materially from those disclosed in forward looking statements, there may be other factors that could cause actual results, performance, achievements or events not to be as anticipated, estimated or intended, and many events are beyond the reasonable control of the Company. Accordingly, readers are cautioned not to place undue reliance on forward looking statements. Forward looking statements in these materials speak only at the date of issue. Subject to any continuing obligations under applicable law or any relevant stock exchange listing rules, in providing this information the Company does not undertake any obligation to publicly update or revise any of the forward looking statements or to advise of any change in events, conditions or circumstances on which any such statement is based.

LITHIUM CLASSIFICATION AND CONVERSION FACTORS

Lithium grades are normally presented in percentages or parts per million (ppm). Grades of deposits are also expressed as lithium compounds in percentages, for example as a percent lithium oxide (Li_2O) content or percent lithium carbonate (Li_2CO_3) content.

Lithium carbonate equivalent ("LCE") is the industry standard terminology for, and is equivalent to, Li_2CO_3 . Use of LCE is to provide data comparable with industry reports and is the total equivalent amount of lithium carbonate, assuming the lithium content in the deposit is converted to lithium carbonate, using the conversion rates in the table included below to get an equivalent Li_2CO_3 value in percent. Use of LCE assumes 100% recovery and no process losses in the extraction of Li_2CO_3 from the deposit.

Lithium resources and reserves are usually presented in tonnes of LCE or Li.

The standard conversion factors are set out in the table below:

Table: Conversion Factors for Lithium Compounds and Minerals

Convert from		Convert to Li	Convert to Li_2O	Convert to Li_2CO_3
Lithium	Li	1.000	2.153	5.324
Lithium Oxide	Li_2O	0.464	1.000	2.473
Lithium Carbonate	Li_2CO_3	0.188	0.404	1.000
Lithium Hydroxide	$\text{LiOH} \cdot \text{H}_2\text{O}$	0.165	0.356	0.880

WEBSITE

A copy of this announcement is available from the Company's website at www.europeanmet.com.

ENQUIRIES:

European Metals Holdings Limited

Keith Coughlan, Managing Director

Tel: +61 (0) 419 996 333

Email: keith@europeanmet.com

Kiran Morzaria, Non-Executive Director

Tel: +44 (0) 20 7440 0647

Julia Beckett, Company Secretary

Tel: +61 (0) 8 6245 2050

Email: julia@europeanmet.com

Beaumont Cornish (Nomad & Broker)

Michael Cornish

Roland Cornish

Tel: +44 (0) 20 7628 3396

Email: corpfin@b-cornish.co.uk

Shard Capital (Joint Broker)

Damon Health

Erik Woolgar

Tel: +44 (0) 20 7186 9950

Blytheweigh (Financial PR)

Tim Blythe

Megan Ray

Tel: +44 (0) 20 7138 3222

The information contained within this announcement is considered to be inside information, for the purposes of Article 7 of EU Regulation 596/2014, prior to its release. The person who authorised for the release of this announcement on behalf of the Company was Keith Coughlan, Managing Director.