



NEXUSMINERALS

# **Corporate Presentation June 2020**

# DISCLAIMER & COMPETENT PERSONS STATEMENT

- This document contains forward looking statements. Forward looking statements are not based on historical facts, but are based on Nexus's current expectations of future results or events. These forward looking statements are subject to risks, uncertainties and assumptions which could cause actual results or events to differ materially from the expectations described in such forward looking statements. While Nexus believes that the expectations reflected in the forward looking statements in this document are reasonable, no assurance can be given that such expectations will prove to be correct. Matters as yet not known to Nexus or not currently considered material by Nexus, may cause actual results or events to be materially different from those expressed, implied or projected in any forward looking statements. Any forward looking statement contained in this document is qualified by this cautionary statement.
- The information contained in this presentation is for informational purposes only and does not constitute an offer to issue, or arrange to issue, securities or other financial products. The information contained in this presentation is not investment or financial product advice and is not intended to be used as the basis for making an investment decision. The presentation has been prepared without taking into account the investment objectives, financial situation or particular needs of any particular person.
- No representation or warranty, express or implied, is made as to the fairness, accuracy, completeness or correctness of the information, opinions and conclusions contained in this presentation. To the maximum extent permitted by law, none of Nexus Minerals Limited, its directors, employees or agents, nor any other person accepts any liability, including, without limitation, any liability arising out of fault or negligence, for any loss arising from the use of the information contained in this presentation. In particular, no representation or warranty, express or implied is given as to the accuracy, completeness or correctness, likelihood of achievement or reasonableness or any forecasts, prospects or returns contained in this presentation nor is any obligation assumed to update such information. Such forecasts, prospects or returns are by their nature subject to significant uncertainties and contingencies.
- Before making an investment decision, you should consider, with or without the assistance of a financial adviser, whether an investment is appropriate in light of your particular investment needs, objectives and financial circumstances. Past performance is no guarantee of future performance.
- The distribution of this document in jurisdictions outside Australia may be restricted by law. Any recipient of this document outside Australia must seek advice on and observe any such restrictions.
- In particular, this presentation does not constitute an offer to sell, or a solicitation of an offer to buy, securities in the United States or to any "U.S. person" (as defined in Regulation S under the U.S. Securities Act of 1933, as amended ("Securities Act")). The securities referred to in this presentation have not been and will not be registered under the Securities Act or under the securities laws of any state in the United States. Securities may not be offered or sold in the United States or to, or for the account or benefit of, any U.S. person, unless the securities have been registered under the Securities Act or an exemption from registration is available.
- The information in this report that relates to the Crusader Mineral Resource Estimate is based upon information compiled by Mr Adam James, a Competent Person who is a member of The Australian Institute of Mining and Metallurgy and the Australian Institute of Geoscientists. Mr James is a full-time employee of Nexus Minerals Limited. Mr James has sufficient experience that is relevant to the style of mineralisation and type of deposit under consideration and to the activity being undertaken to qualify as a Competent Person as defined in the 2012 Edition of the 'Australasian Code for Reporting of Exploration Results, Mineral Resources and Ore Reserves'. Mr James consents to the inclusion in the report of matters based on his information in the form and context in which it appears.
- The information in this report that relates to Exploration Results, Mineral Resources or Ore Reserves is based on, and fairly represents, information and supporting documentation, prepared, compiled or reviewed by Mr Andy Tudor, who is a Member of the Australasian Institute of Mining and Metallurgy and the Australian Institute of Geoscientists. Mr Tudor is the Managing Director and full-time employee of Nexus Minerals Limited. Mr Tudor has sufficient experience which is relevant to the style of mineralisation and type of deposit under consideration and to the activity for which he is undertaking to qualify as a Competent Person as defined in the 2012 Edition of the "Australian Code for Reporting of Exploration Results, Mineral Resources and Ore Reserves". Mr Tudor consents to the inclusion in the report of the matters based on his information in the form and context in which it appears.
- The exploration results are available to be viewed on the Company website [www.nexus-minerals.com](http://www.nexus-minerals.com). The Company confirms it is not aware of any new information that materially affects the information included in the original announcement. The Company confirms that the form and context in which the Competent Person's findings are present have not been materially modified from the original announcements of 13/10/2016, 7/2/2017, 6/9/2018, 20/9/2018, 16/10/18, 29/11/2018, 24/1/2019, 4/2/2019, 27/2/19, 15/3/2019, 2/4/2019, 9/4/2019, 16/4/2019, 18/4/2019, 29/5/2019, 8/7/2019, 28/8/2019, 8/10/2019, 21/10/2019, 27/2/2020, 13/3/2020 and 21/4/2020.
- No Ore Reserves have currently been defined on the Pinnacles JV Gold Project, nor the Wallbrook Gold Project. There has been insufficient exploration and technical studies to estimate an Ore Reserve and it is uncertain if further exploration and/or technical studies will result in the estimation of an Ore Reserve. The potential for the development of a mining operation and sale of ore from the Pinnacles JV Gold Project or the Wallbrook Gold Project has yet to be established.

# COMPANY SNAPSHOT



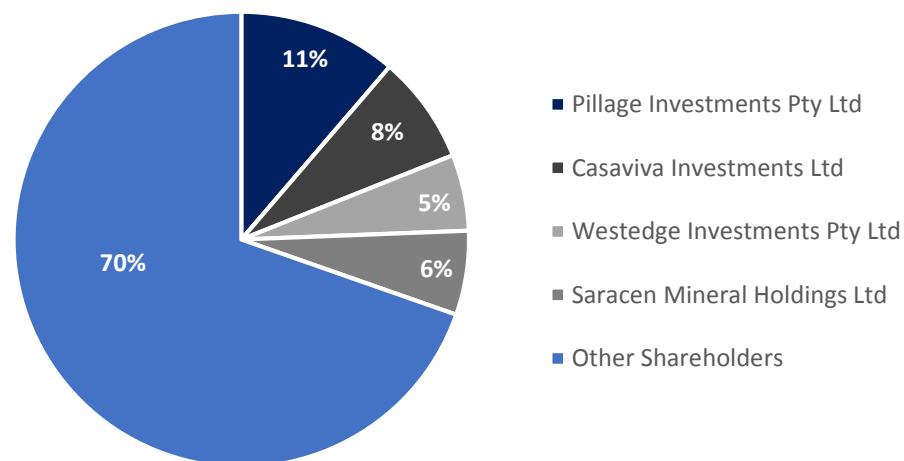
## CORPORATE OVERVIEW

<b>Nexus Minerals Limited</b>	ASX: NXM
<b>Shares</b>	118 million
<b>Share Price</b>	A\$0.05
<b>Market Cap</b>	A\$5.9m
<b>Cash (31/03/2020)</b>	A\$2.59m
<b>Enterprise Value</b>	A\$3.31m
<b>Shareholders</b>	800
<b>Top 20</b>	49.90%

## BOARD AND MANAGEMENT

<b>Chairman</b>	Mr Paul Boyatzis
<b>Managing Director</b>	Mr Andy Tudor
<b>Non - Executive Director</b>	Dr Mark Elliott
<b>Non - Executive Director</b>	Mr Bruce Maluish
<b>Company Secretary</b>	Mr Phil MacLeod

## Share Ownership



ASX:NXM



## *TARGETING DISCOVERY OF LARGE SCALE GOLD DEPOSITS IN WESTERN AUSTRALIAN GOLDFIELDS*

➤ Strategic landholding in Eastern Goldfields, WA

➤ Saracen Mineral Holdings (Saracen ASX:SAR)

❑ 6% Shareholder & JV Partner

➤ Highly Prospective Regional Tenement Package

❑ Pinnacles Gold Project – 125km<sup>2</sup>

❑ Wallbrook Gold Project– 250km<sup>2</sup>

➤ Professional Team

❑ Gold Exploration Focus

❑ Development Experience



# PROJECT LOCATIONS

## Eastern Goldfields Western Australia

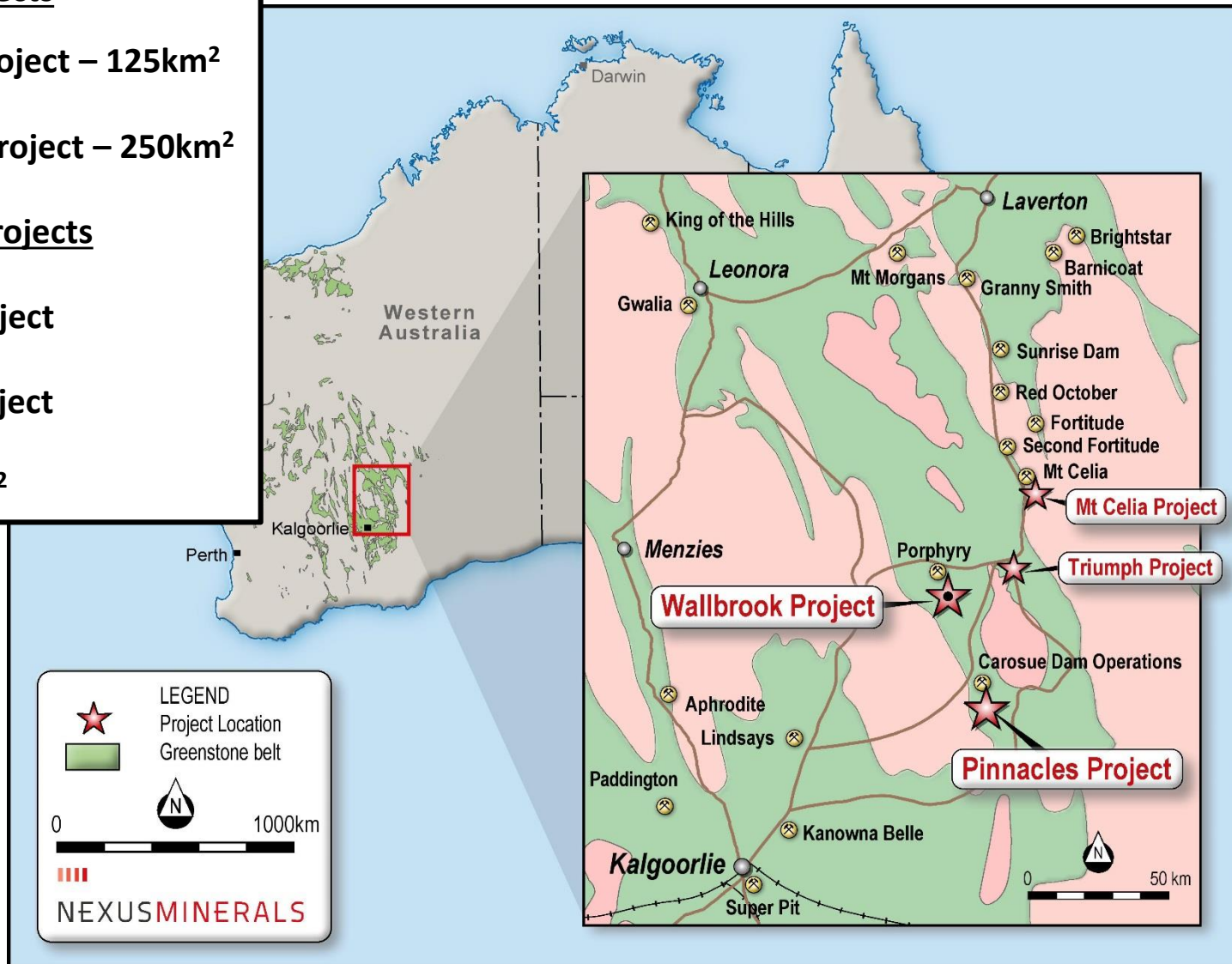
### Key Projects

- Pinnacles Gold Project – 125km<sup>2</sup>
- Wallbrook Gold Project – 250km<sup>2</sup>

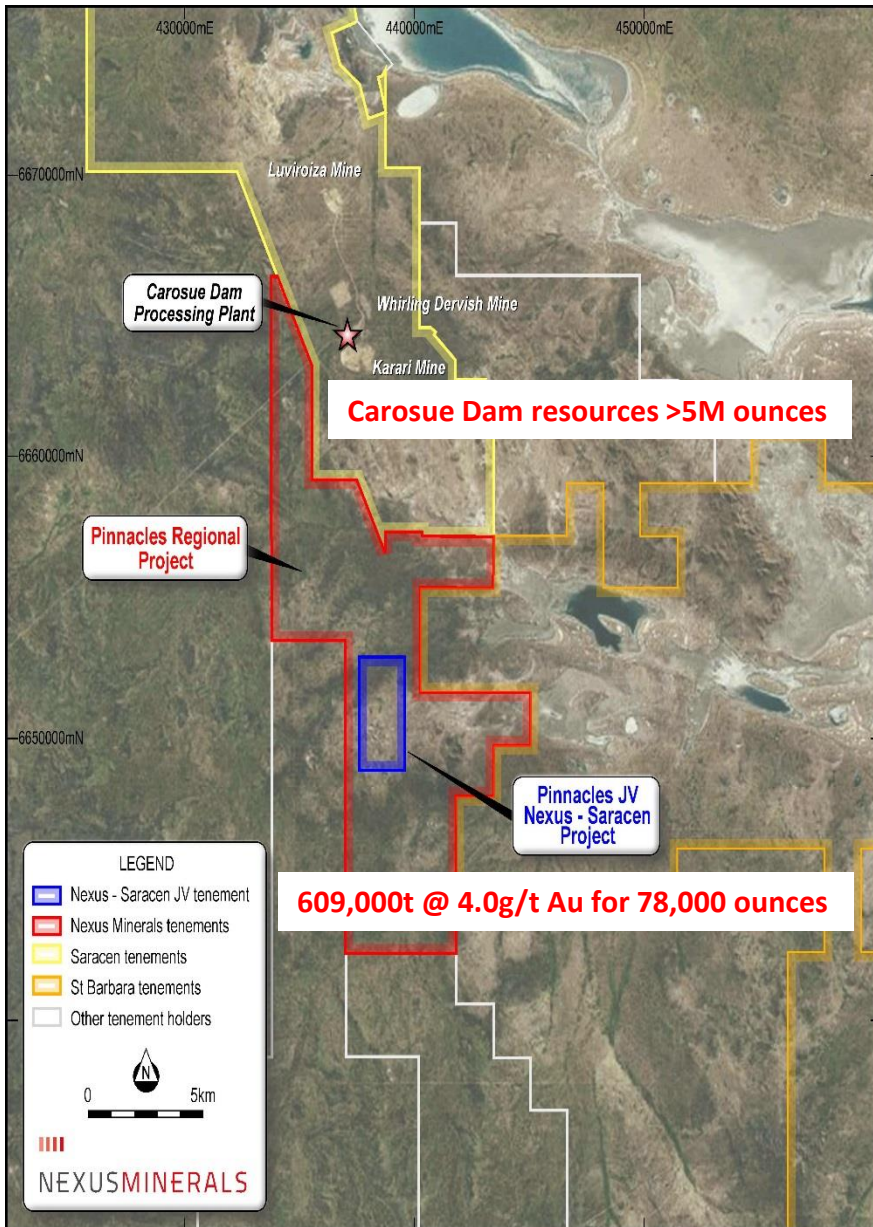
### Portfolio Projects

- Triumph Gold Project
- Mt Celia Gold Project

**Total Package 680km<sup>2</sup>**







- >125km<sup>2</sup> of granted mining tenements
  - Australia's Gold "Heartland"
  - **Strong Gold Price ~A\$2,500+/Oz**
  - Surrounded by multi million ounce deposits
  - Huge exploration upside
  - Low cost exploration and resource discovery
  - Management track record of success
- Explore / Discover / Mine**

- Pinnacles Contributing JV Nexus 90% / Saracen 10% (ASX:SAR)
- Project has JORC 2012 Combined Resource of 609,000t @ 4g/t Au for 78,000oz\*
  - Open Pit Resource 159,000t @ 2.4g/t Au for 12,000 ounces
  - Underground Resource 450,000t @ 4.6g/t Au for 66,000 ounces
- Potential for Underground High Grade Gold Mine below Open Pit
- SAR to buy any ore produced by way of Ore Sale & Purchase Agreement
- SAR to process the ore through their 2.4Mtpa Mill at Carosue Dam Mining Operations (13km to the north) – Mill currently being upgraded to 3.2Mtpa
- SAR infrastructure - Nexus has full access to: haul roads, camp facilities etc....

**LOW CAPITAL COST Development De-risking project metrics**

**High AUD\$\$\$ Gold Price \$2,500+++**

**Accelerating production timeline**

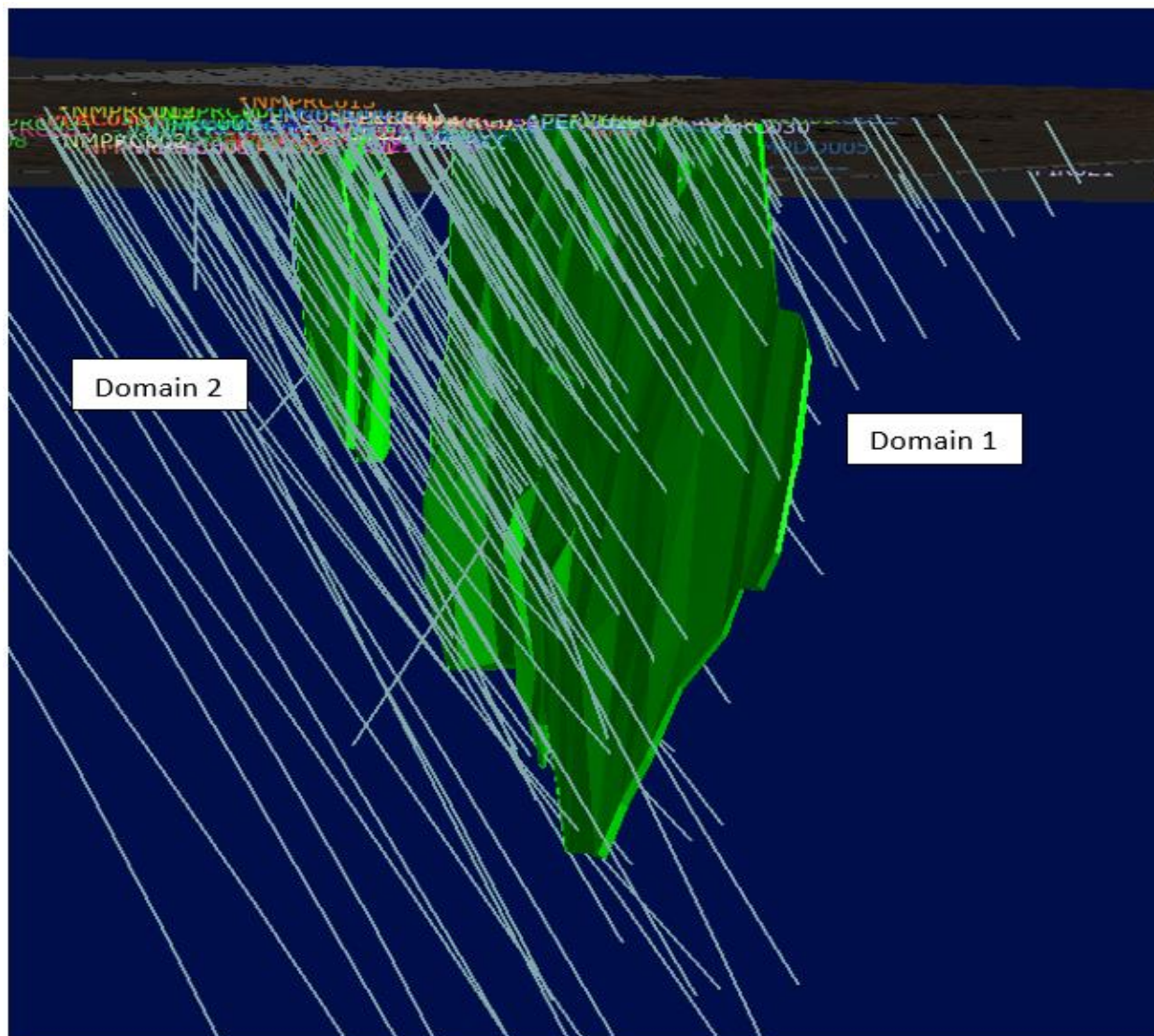
**Use of ALL SAR mine & mill infrastructure**

**Scoping Study completed March 2020**

**Positive Result**

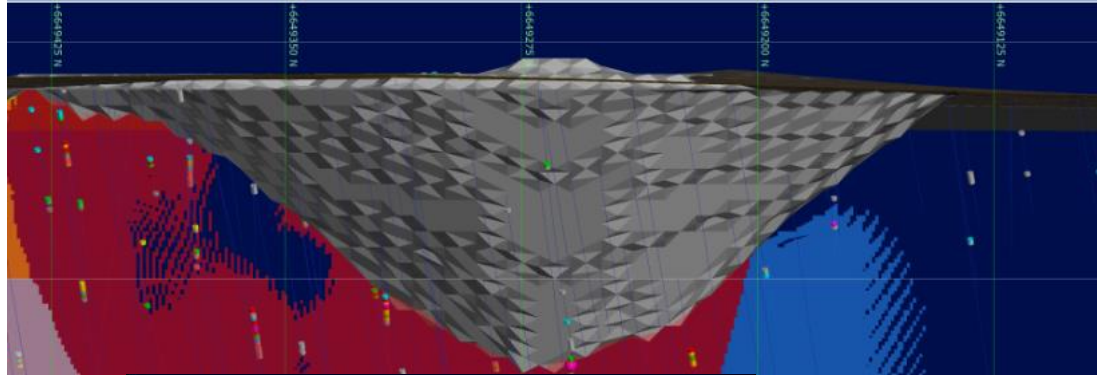
**Feasibility Study underway**





No Ore Reserves have currently been defined on the Pinnacles JV Gold Project. There has been insufficient exploration and technical studies to estimate an Ore Reserve and it is uncertain if further exploration and/or technical studies will result in the estimation of an Ore Reserve. The potential for the development of a mining operation and sale of ore from the Pinnacles JV Gold Project is yet to be established.

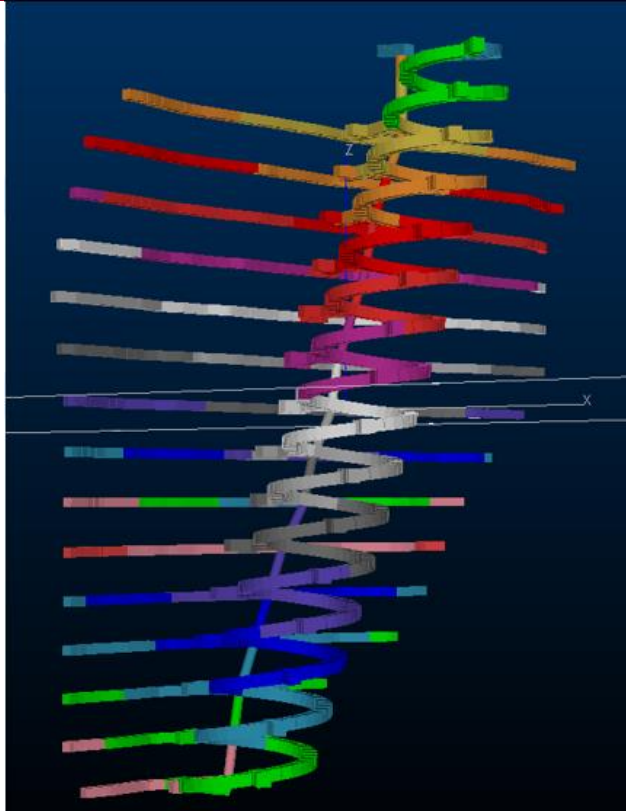




Surface

159,000t @ 2.4g/t Au for 12,000 ounces

80m



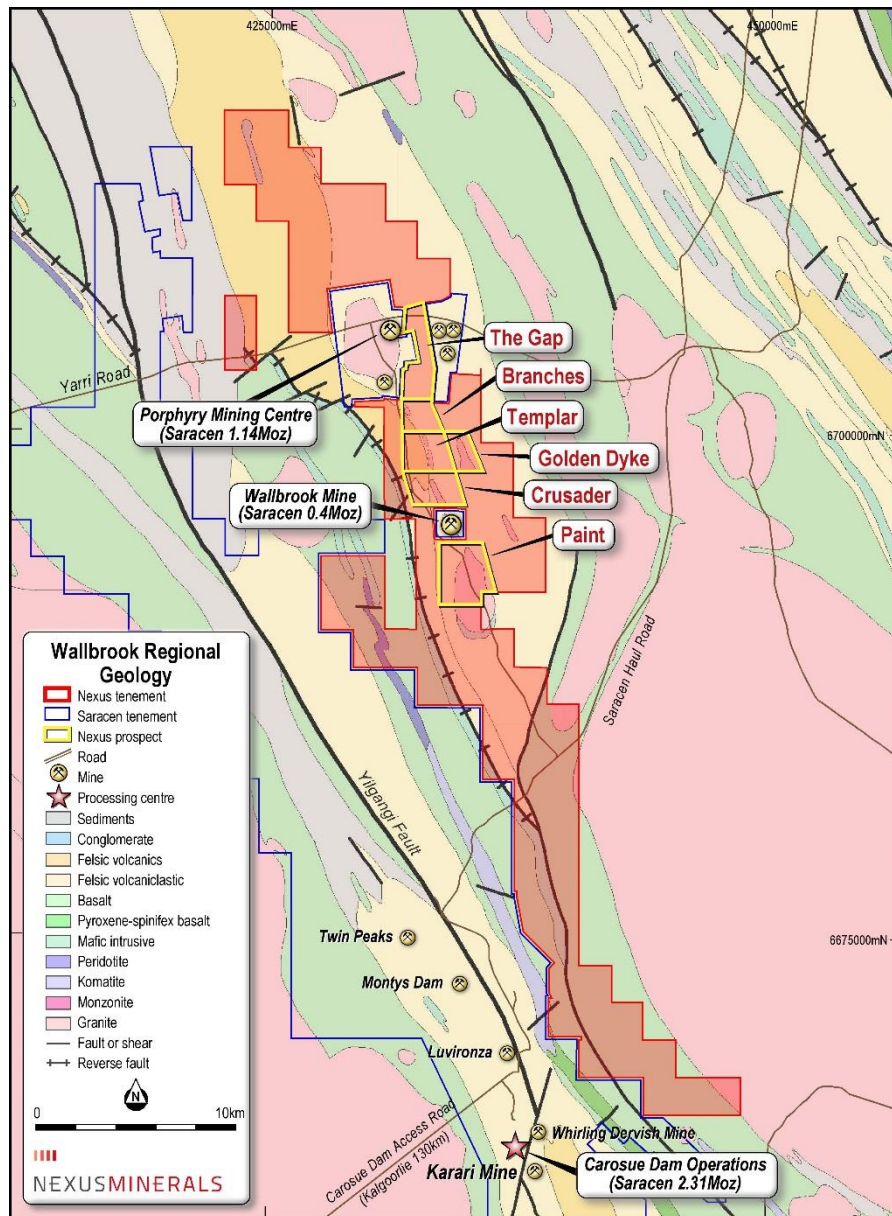
100m

Scoping Study – Conceptual  
Open Pit followed by Decline and  
20m Level U/G Development

450,000t @ 4.6g/t Au for 66,000 ounces

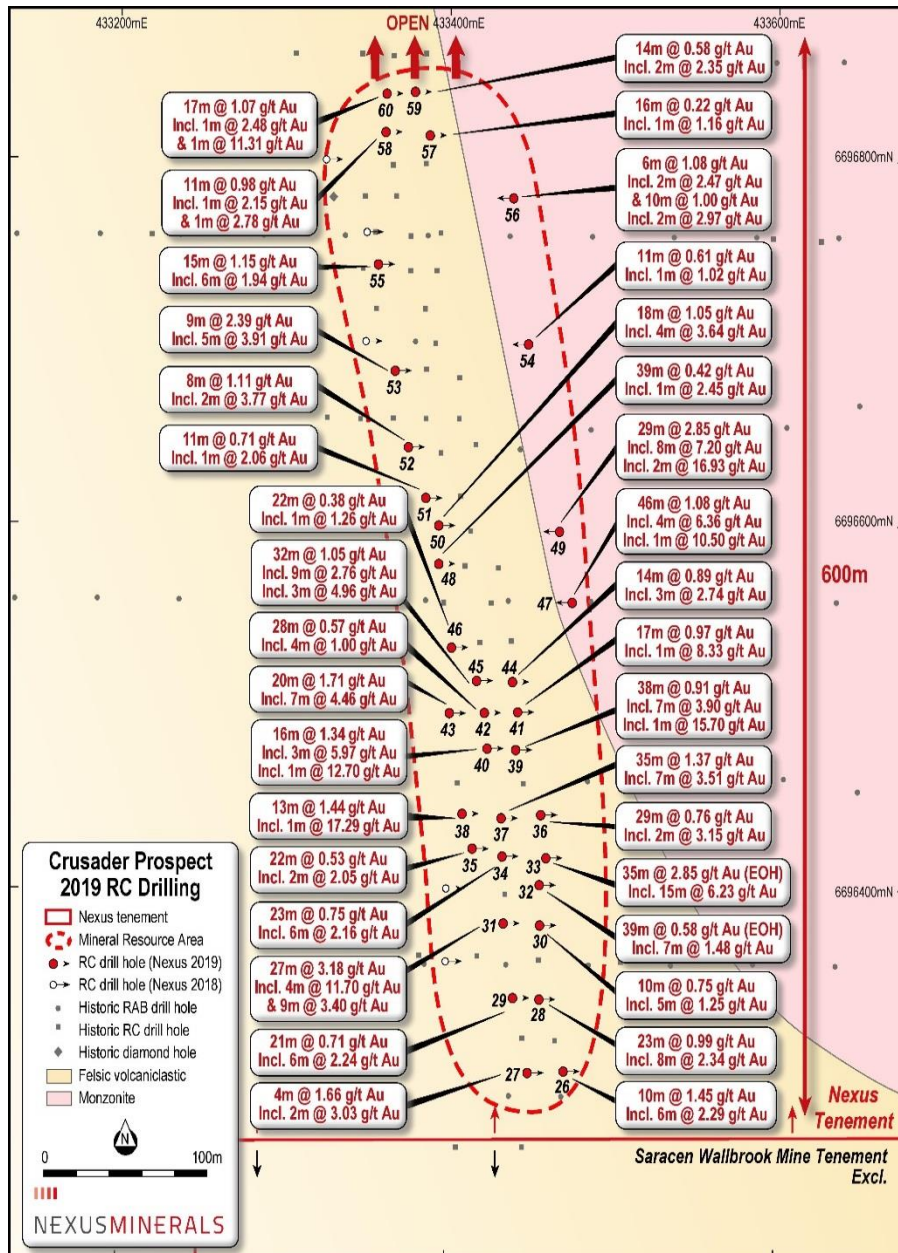
340m

# WALLBROOK GOLD PROJECT



- 140km northeast of Kalgoorlie & immediately north of Saracen's Carosue Dam Operations
- Saracen aggressively exploring adjacent tenement package – Upgrading Carosue Dam facilities – mill, paste plant, camp, airstrip.....
- 250km<sup>2</sup> contiguous tenement package – Some 50km strike of prospective geology
- Geology & structural setting highly prospective for hosting gold mineralisation  
**Multi Million Ounce Gold District**
- Significant historical gold results, limited follow up, largely underexplored landholding
- Regional gold deposits are located
  - ✓ Proximal to porphyry intrusions
  - ✓ Within altered intruded host rocks

# CRUSADER PROSPECT

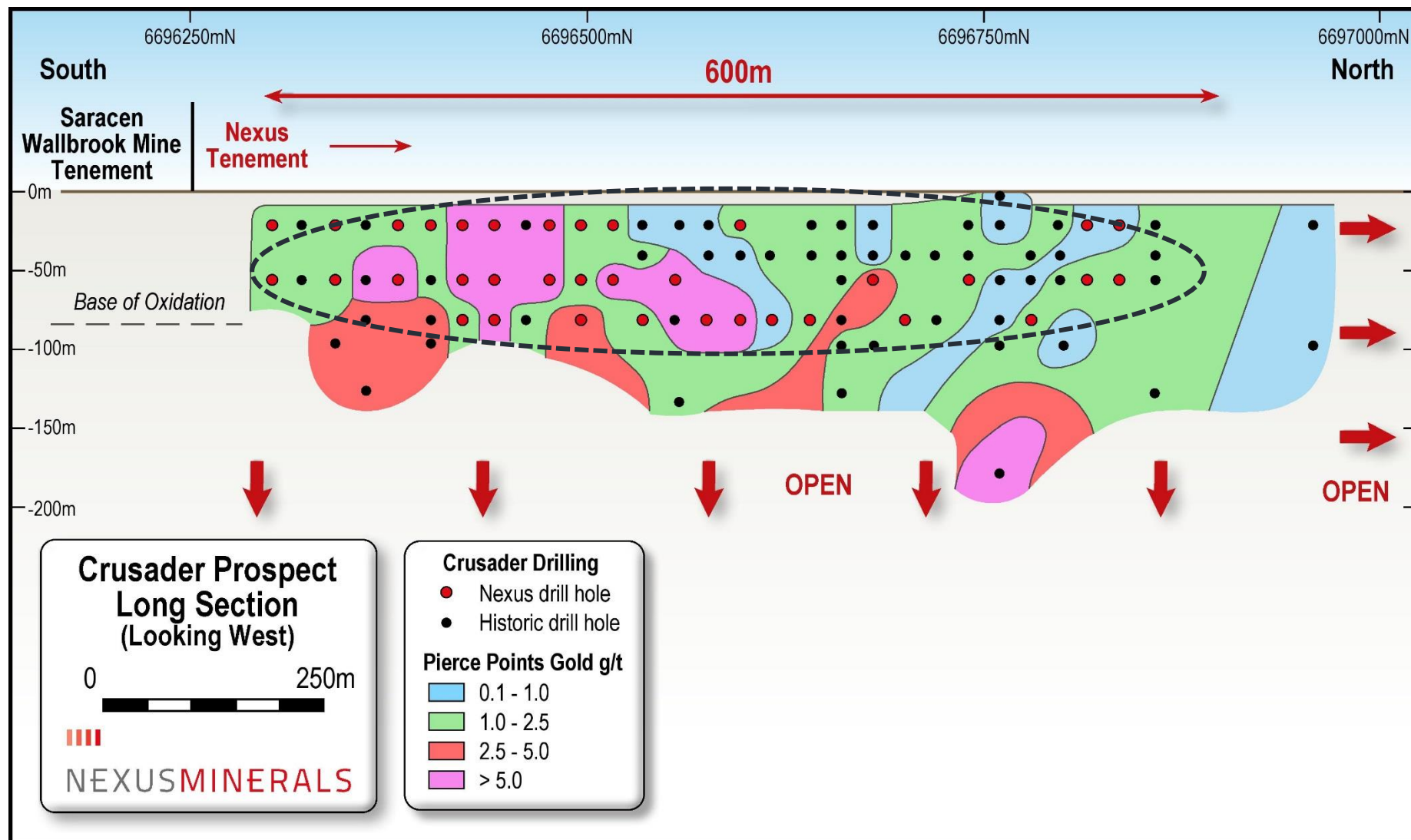


- Crusader Prospect 40 hole 4626m RC Drill program confirmed mineralisation style, alteration style and gold grades along 600m strike zone;
- Crusader JORC 2012 Combined Mineral Resource;
  - 2.17Mt @ 1.22g/t Au for 85,000 ounces\*
- 54% of the mineral resource within the Indicated category, drilling concentrated on the top 100m;
- Resource remains open to the north and at depth;
- Best intersections include;
  - Hole#31 - 27m @ 3.18g/t Au (from 61m)
    - ✓ incl. 4m @ 11.70g/t Au
    - ✓ incl. 1m @ 30.33g/t Au
    - ✓ and 9m @ 3.40g/t Au
  - Hole#33 - 35m @ 2.85g/t Au (from 25m to EOH)
    - ✓ incl. 15m @ 6.23 g/t Au
    - ✓ incl. 1m @ 21.95g/t Au
  - Hole#49 - 29m @ 2.85g/t Au (from 30m)
    - ✓ incl. 8m @ 7.20g/t Au
    - ✓ incl. 2m @ 16.93g/t Au
    - ✓ incl. 1m @ 20.13g/t Au

\*See ASX release dated 8 July 2019

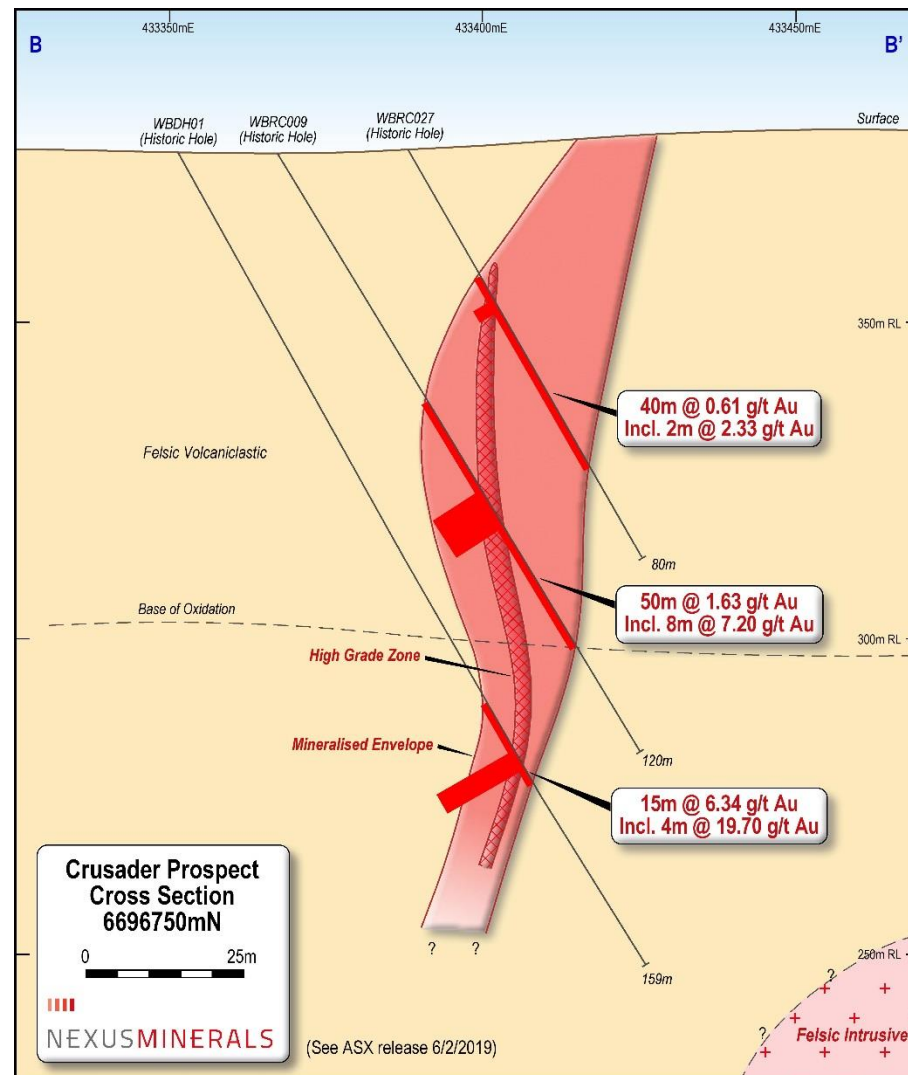
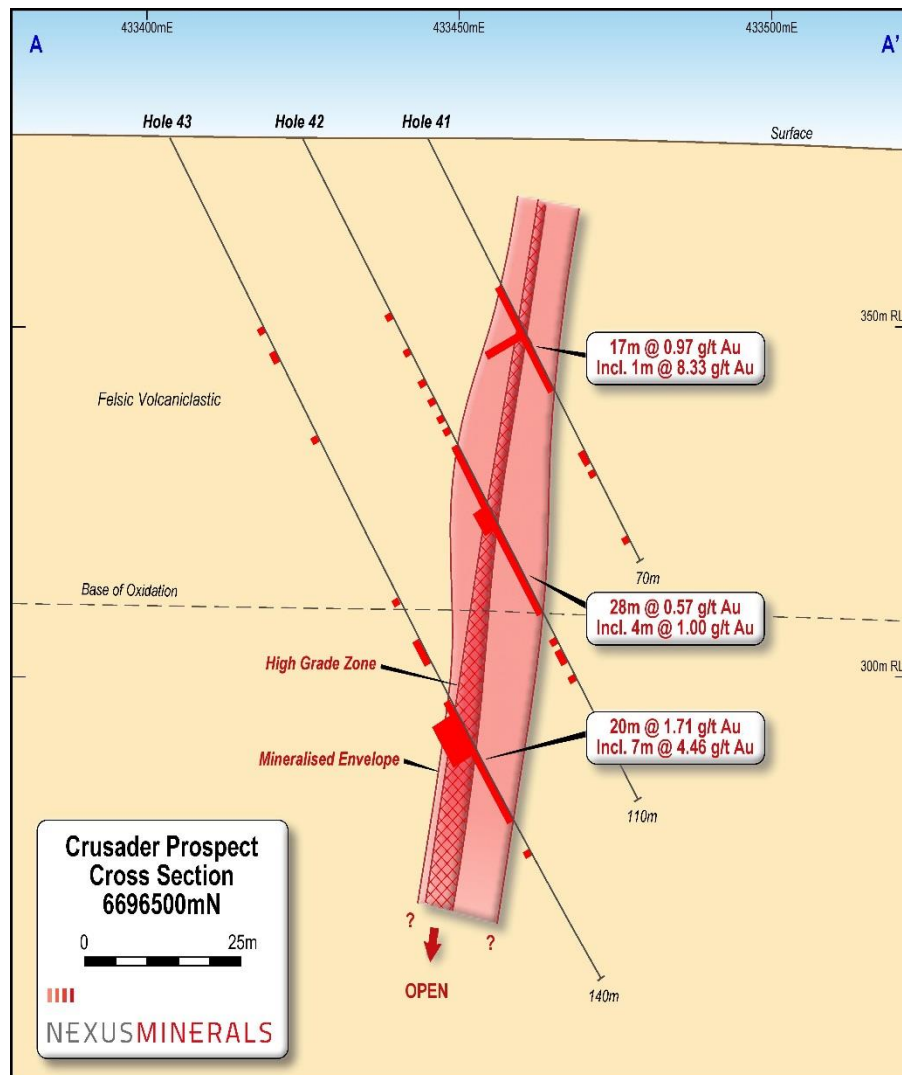


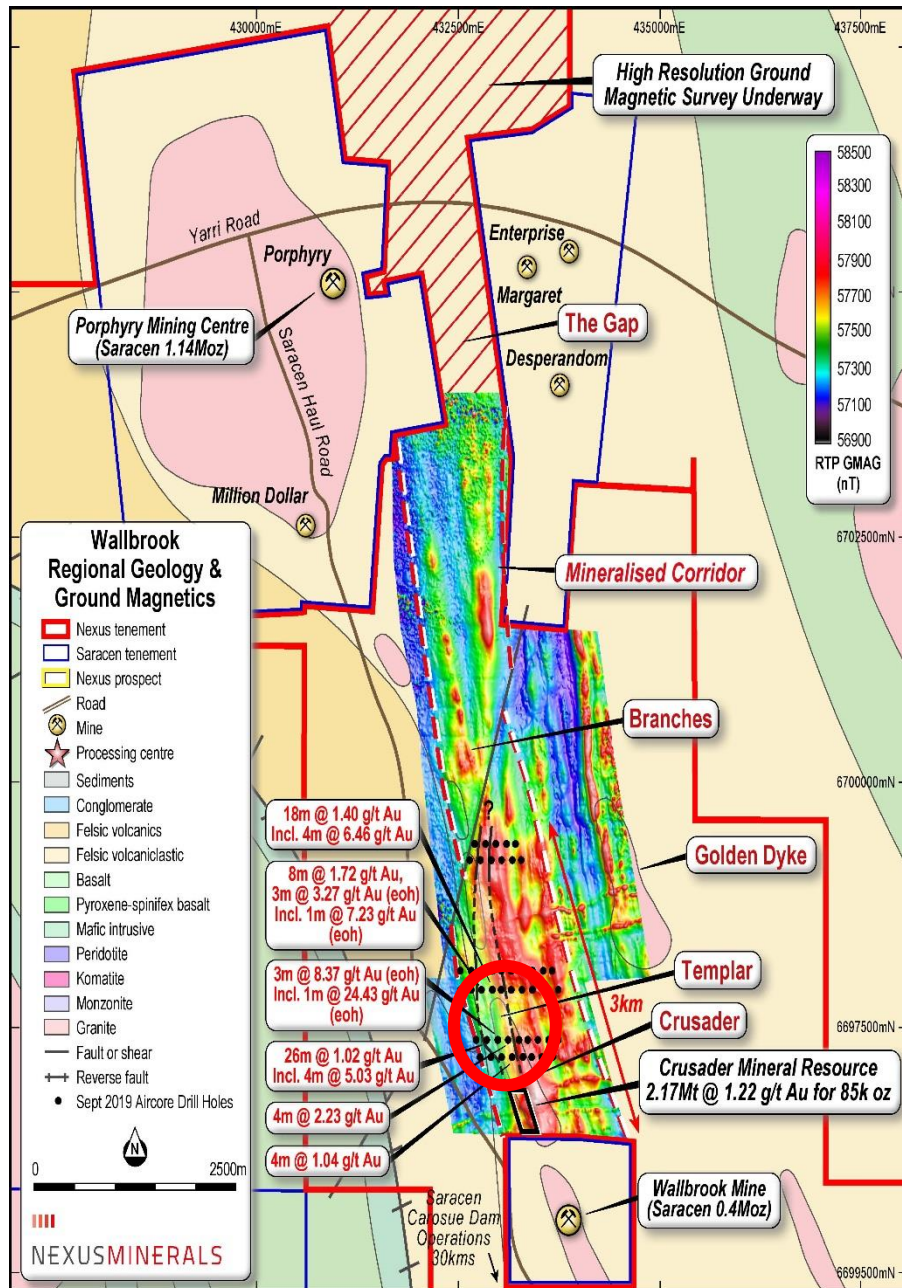
## --- Mineral Resource Envelope





# CRUSADER PROSPECT





➤ 4,375m Aircore drill program completed Sept 2019;

➤ Templar Aircore program successfully delineated a mineralised corridor 500m long x 80m wide;

➤ Line 1 (Southern Line)

❑ Hole #6 - 4m @ 1.04g/t Au (from 32m)

❑ Hole #7 - 1m @ 1.53g/t Au (from 59m eoh)

➤ Line 2 (+100m north)

❑ Hole #17 - 26m @ 1.02g/t Au (from 44m)

❑ Incl 4m @ 5.03g/t Au (from 44m)

❑ Hole #18 - 4m @ 1.76g/t Au (from 32m)

❑ Hole #19 - 3m @ 8.37g/t Au (from 60m eoh)

➤ Line 3 (+400m north)

❑ Hole #35 - 18m @ 1.40g/t Au (from 44m)

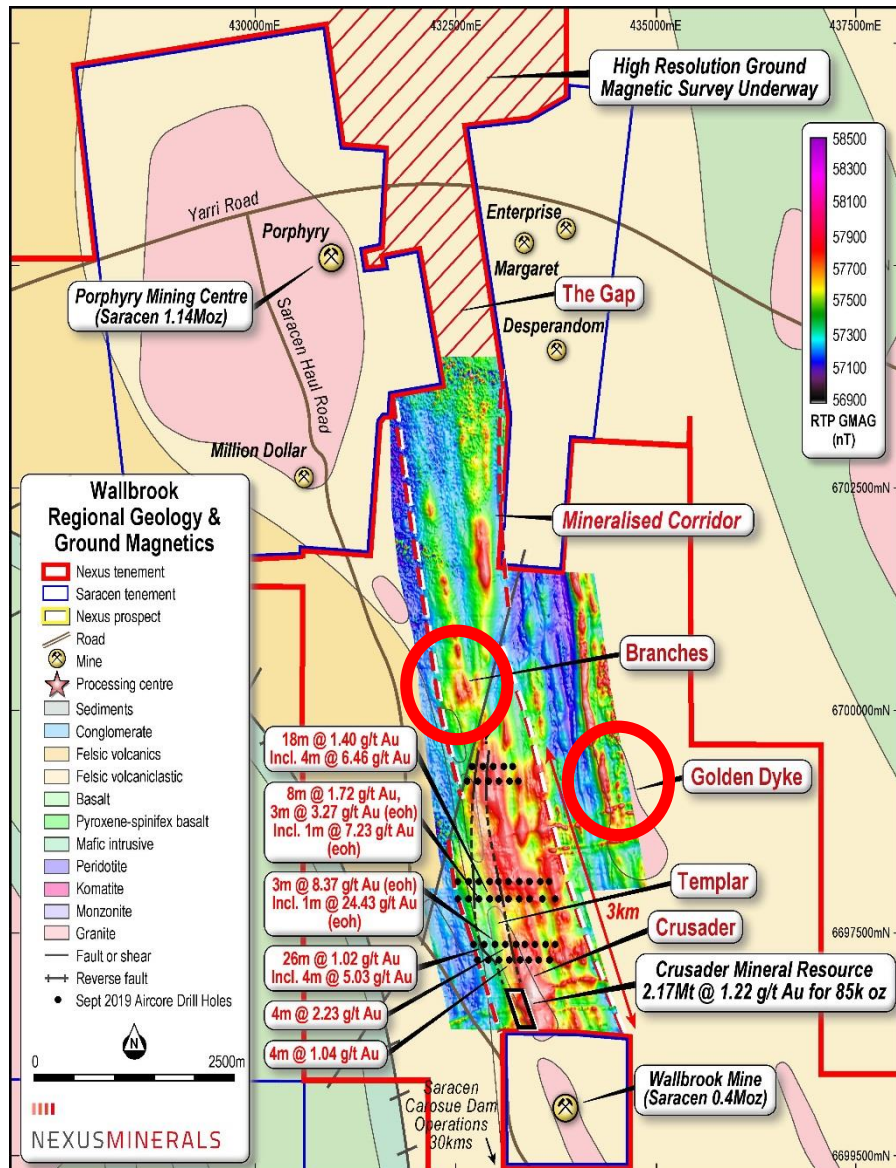
❑ Incl 4m @ 6.46g/t Au (from 44m)

❑ Hole #36 - 8m @ 1.72g/t Au (from 24m) and

❑ Hole #36 - 3m @ 3.27g/t Au (from 48m eoh)

❑ Hole #37 - 4m @ 1.19g/t Au (from 48m)

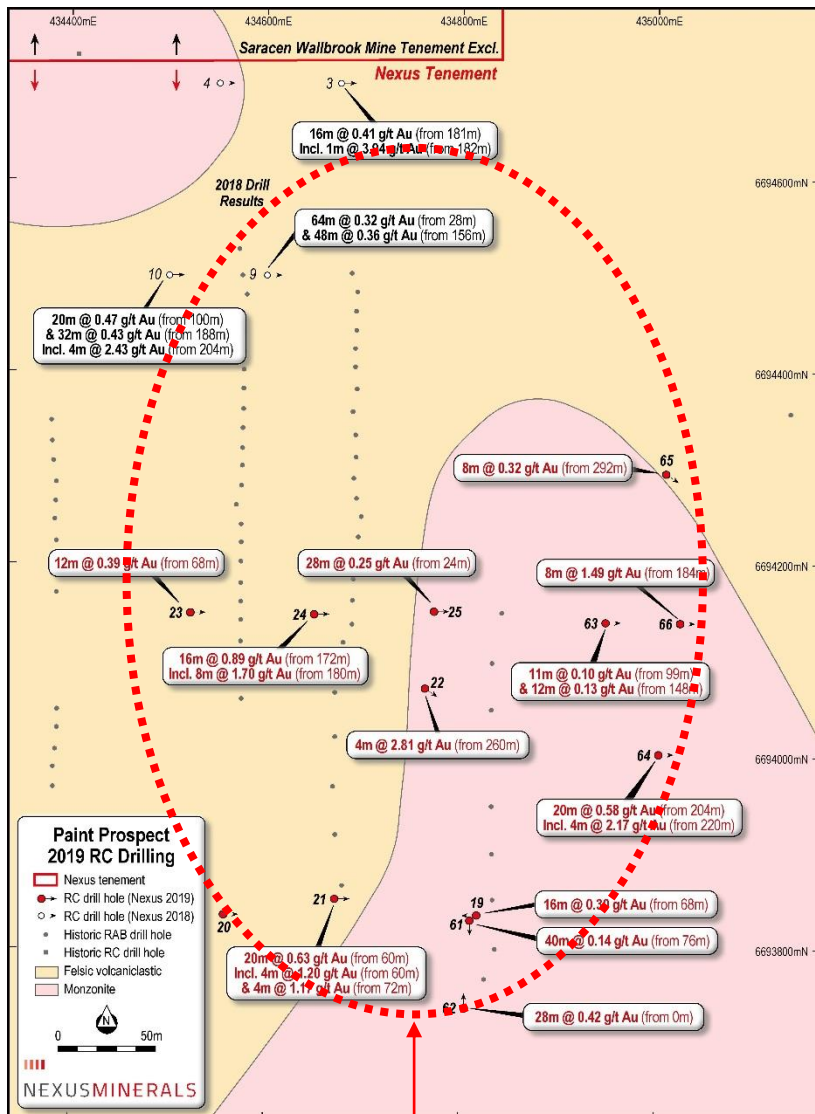
➤ Aircore and RC Drilling planned to infill Aircore lines and test depth extensions – multiple holes best gold mineralisation intersected at eoh



## Regional Exploration Completed

- Nexus Golden Dyke Prospect RC Drill Holes;
  - Intrusive contact with silicified and altered host
  - NMWBRC18-018 3m @ 19.36g/t Au (from 56m)
  - NMWBRC18-002 4m @ 2.17g/t Au (from 59m)
- Historic Database Branches Prospect RC Drill Holes;
  - Structurally complex area with significant silicification and alteration of host rocks
  - Hole 95RC116 - 15m @ 4.50g/t Au (from 29m)
  - Hole 95RC117- 17m @ 2.20g/t Au (from 50m)
  - Hole 95RC112- 8m @ 3.10g/t Au (from 14m)
- RC Drilling planned to follow up previous mineralised drill intersections;
- High resolution ground magnetic survey acquired has successfully mapped lithological continuity and identified structural discontinuities;
- High resolution ground magnetic survey underway covering ground to the north through The Gap.





## Targeting “Karari Style” Mineralisation

- Nexus RC Drill holes – Mineralisation hosted in variably hematite altered intrusive and host rocks
- Multiple zones of mineralised Au intersections
  - 64m @ 0.32g/t Au (from 28m)
  - 48m @ 0.36g/t Au (from 156m)
  - 20m @ 0.63g/t Au (from 60m)
  - 20m @ 0.58g/t Au (from 204m)
  - 28m @ 0.42g/t Au (from 0m)

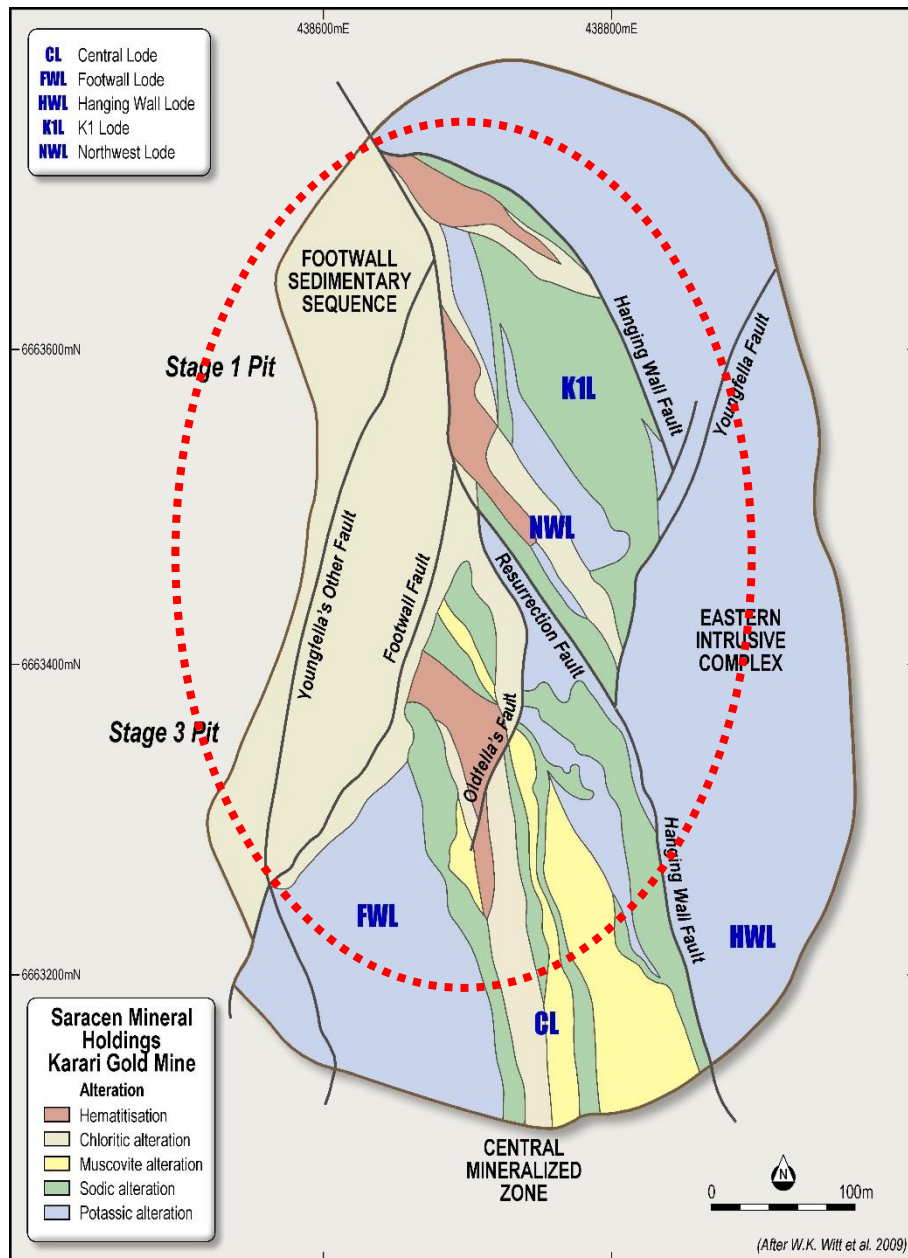


NMWBC18-010 204-208m. 4m @ 2.43g/t Au. Brick-red coloured hematitic alteration at contact of high-level porphyry intrusive and volcanic host rock

Karari deposit size outline over Paint prospect



# SARACEN'S KARARI GOLD MINE – “THE TARGET STYLE”



## Karari Gold Mine Discovery\*

### 1991

- 400m gold soil anomaly;
- RAB drilling identified >100ppb Au anomaly;
- Discovery hole
  - 26m @ 0.13g/t Au (from 58m)  
Hosted in small felsic intrusive;
  - 54m @ 0.21g/t Au (from 154m)  
Hosted in strongly foliated hematite altered zone. This interval included 2 narrow zones of +1g/t Au

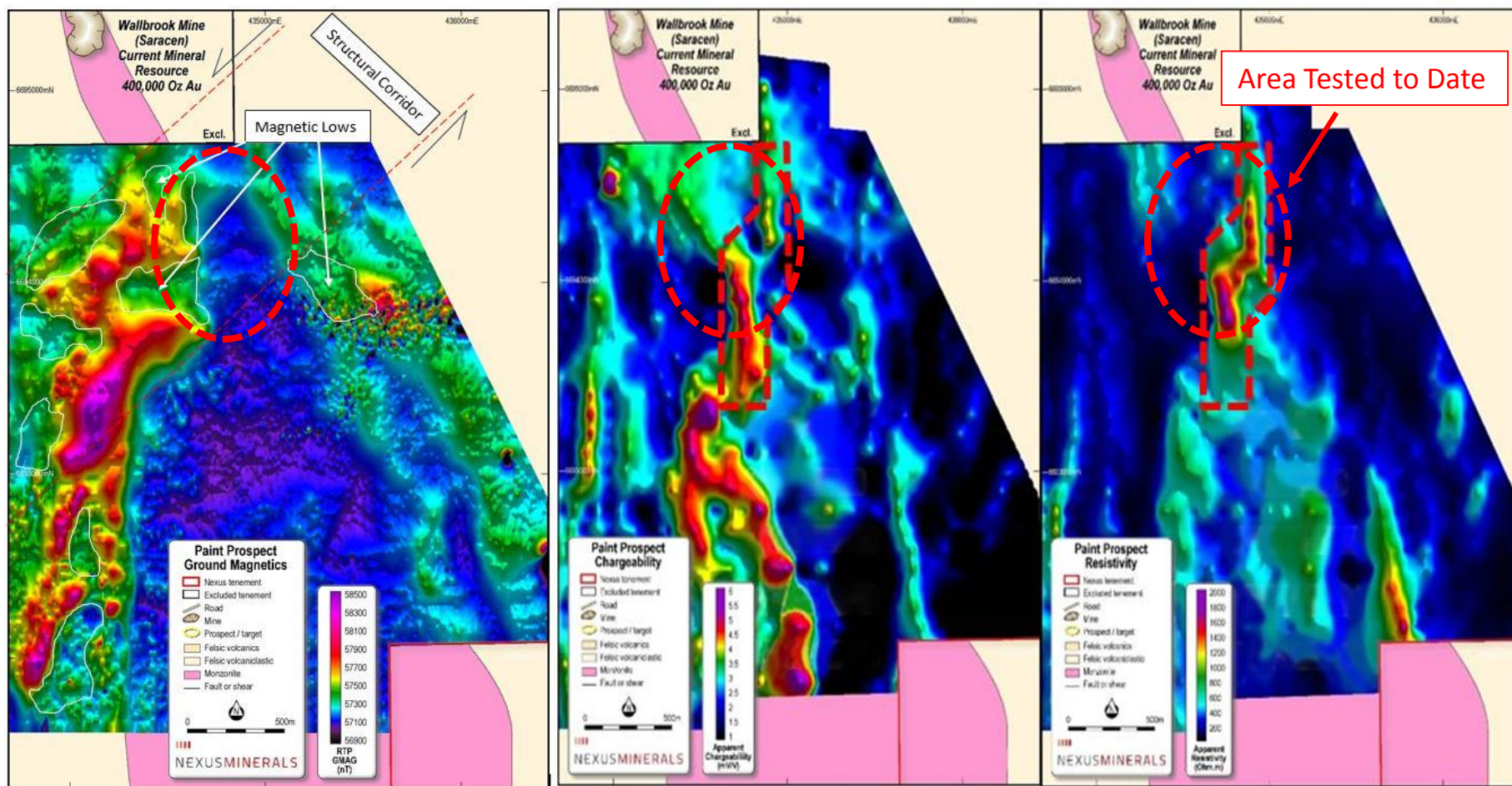
### 1997

- RC Drill Program returned
  - 12m @ 2.05g/t Au (from 38m);
  - 12m @ 3.03g/t Au (from 58m).

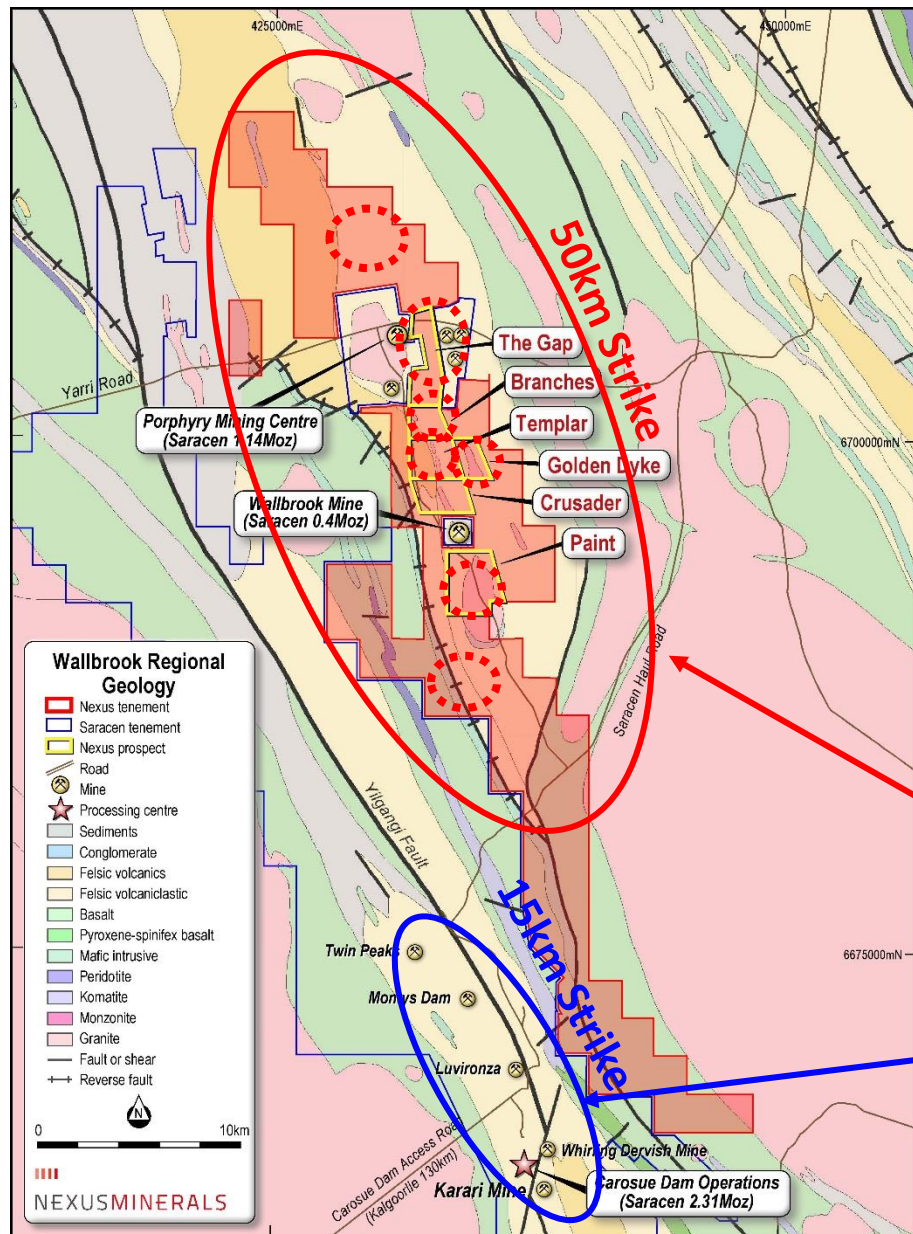
\*Carosue Dam Gold Project – Evolution of a Discovery  
 Langworthy and Joyce  
 New Generation Gold Mines Conference 1999

## Nexus Geophysical Surveys - excellent vectors for mineralisation and drill planning

- High Resolution Ground Magnetics – Structure + anomalous magnetic lows within magnetic highs
- Coincident GAIP Chargeability & Resistivity anomaly – Silicification and sulphide concentration
- Gravity – Highlights potential hydrothermal alteration and complex structural features







## Planned Exploration Activities

- Historic data compilation across 250km<sup>2</sup> tenure
- Exploration strategy development
- Geological - Alteration - Structural mapping
- Analysis of new & historical geochemical datasets
- Modelling of new & historical geophysical datasets
- Ground geophysical surveys – Gravity & Magnetics
- Aircore / RC / Diamond drill programs

 Prospects identified to date for follow-up exploration and prospective drill targeting

**Nexus Minerals “Corridor of Riches” ???  
“The RIGHT Rocks”**

**Saracen’s “Corridor of Riches”  
Mineral Resources >5 Moz Gold  
- and Growing**

(Source: Saracen Mineral Holdings website)

# NEXUS 6 MONTH PROGRAM

	July 2020	Aug 2020	Sept 2020	Oct 2020	Nov 2020	Dec 2020
Pinnacles	Feasibility Study / Resource definition drilling / Geotechnical drilling / Environmental studies / Metallurgical testwork / Permitting.....					
Wallbrook	RC and Aircore Drilling Crusader / Templar / Paint / Branches / Golden Dyke Prospects					
	Detailed High Resolution Ground Magnetic Survey The Gap and moving north					
	Regional Tenement Package - Geological – Alteration – Structural Mapping					
R&D Project	Final Interpretation and Reporting					



- ✓ Highly Prospective and strategic landholding
- ✓ Major gold producer Saracen – shareholder, JV partner and supporter of Nexus' district exploration activities
- ✓ Access to mill and mine infrastructure – Saracen's Carosue Dam Operations
- ✓ Potential for near term cash flow – Pinnacles
- ✓ Active gold explorer in multi million ounce Au region – largely underexplored landholding
- ✓ Systematic exploration of projects – utilising multiple disciplinary techniques
- ✓ Professional & experienced management team
- ✓ \$2.59 million Cash on Hand

## Contact:

Mr Andy Tudor  
Managing Director  
[andy.tudor@nexus-minerals.com](mailto:andy.tudor@nexus-minerals.com)

NEXUS MINERALS LIMITED ASX:NXM  
ABN: 96 122 074 006

PO Box 2803,  
West Perth WA 6872

T: +61 8 9481 1749  
W: [www.nexus-minerals.com](http://www.nexus-minerals.com)

Thank You