

**ASX  
ANNOUNCEMENT**

22 June 2020

**CORPORATE DIRECTORY****NON EXECUTIVE CHAIRMAN**  
Terry Streeter**MANAGING DIRECTOR**  
Shane Sadleir**COMMERCIAL DIRECTOR**  
Ralph Winter**NON EXECUTIVE DIRECTOR**  
Adrian Larking**JOINT COMPANY SECRETARIES**  
Ralph Winter / David McEntaggart**ASX: MOH****CORPORATE ADDRESS****L11/216 ST GEORGES TCE**  
**PERTH 6000****T +61 (08) 9481 0389**  
**+61 (08) 9463 6103****E [admin@mohoresources.com.au](mailto:admin@mohoresources.com.au)****W [www.mohoresources.com.au](http://www.mohoresources.com.au)****MOHO TO ACQUIRE 100% OF EAST SAMPSON  
DAM MINING LEASE****HIGHLIGHTS:**

- **Moho and Odin sign binding Heads of Agreement to transfer remaining 30% ownership of highly prospective and mineralised mining lease M27/263 to Moho**
- **Termination of joint venture on M27/263 simplifies management of technical programs and removes budget constraints**
- **Moho to expedite drill programs and mining studies at East Sampson Dam prospect and exploration of numerous anomalous gold prospects throughout Silver Swan North project**

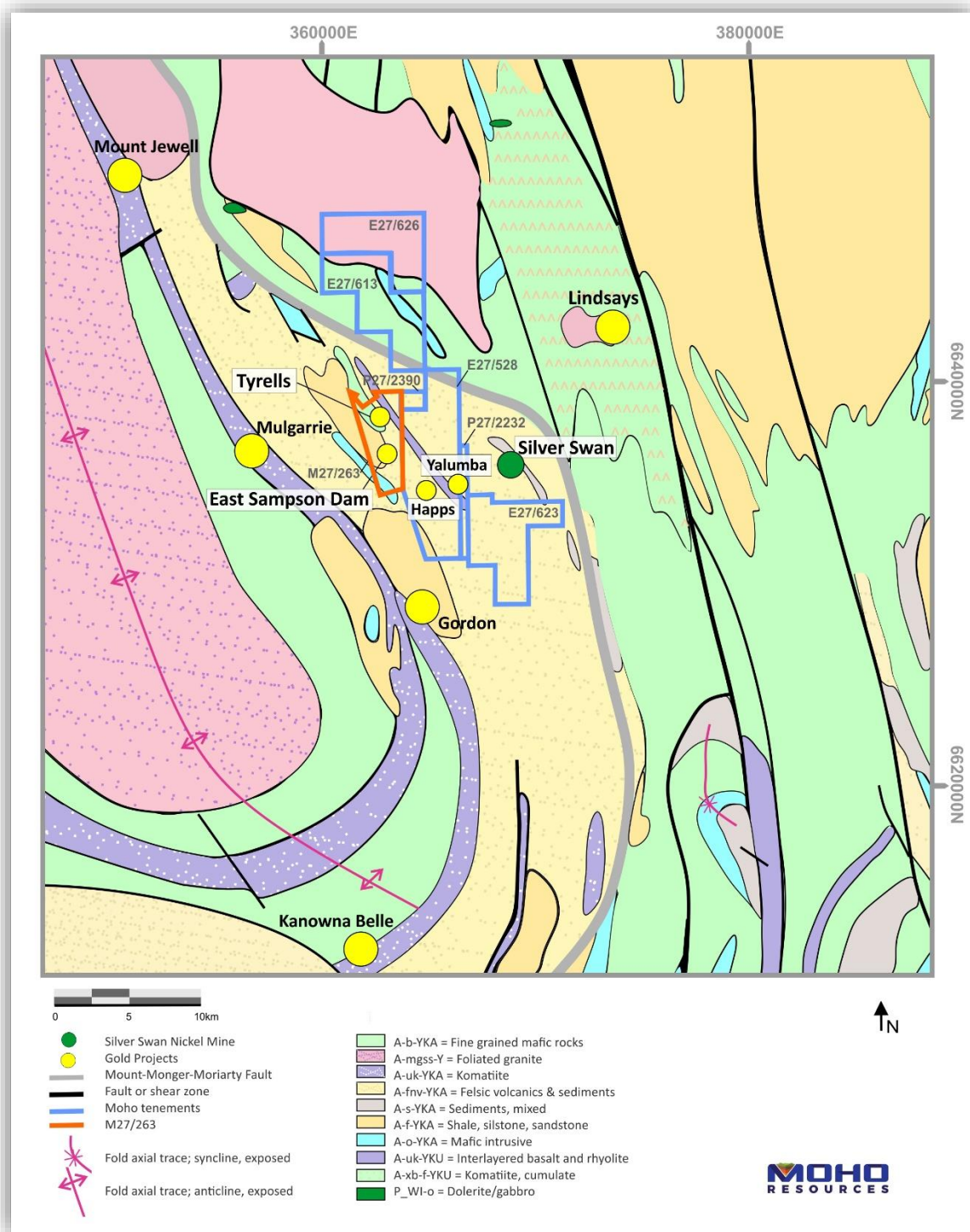
Moho Resources Limited (ASX:MOH) ("Moho" or "the Company") is pleased to announce that it has signed a Heads of Agreement with Odin Metals Limited (ASX:ODM) ("Odin"), to acquire the remaining 30% interest in M27/263 which includes the highly prospective and mineralised East Sampson Dam gold prospect.

The key terms of the acquisition are as follows:

- Moho to pay Odin \$120,000 in cash within 30 days of signing,
- Odin to be issued 4,500,000 fully paid ordinary shares in Moho at a deemed issue price of \$0.065 per share (subject to shareholder approval at an EGM to be convened shortly and held within 60 days of signing), and
- Moho to grant Odin a net smelter royalty of 0.5% on minerals, mineral products and concentrates, produced and sold from the tenement.

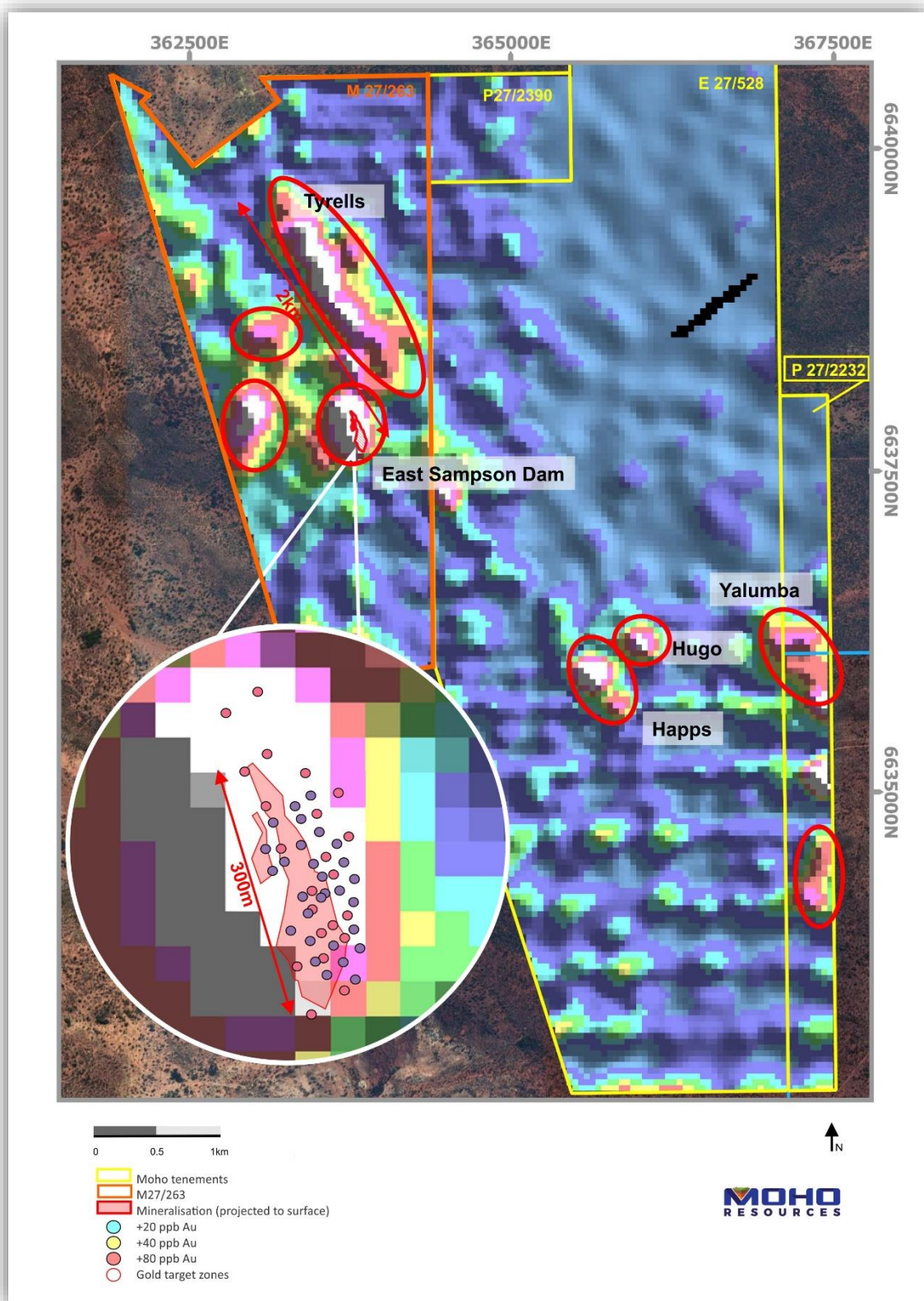
Moho welcomes Odin as a substantial shareholder to the register at completion of the agreement and looks forward to Odin's continued support.

*"Moho looks forward to accelerating exploration at the Silver Swan North Project, in particular the next drill programs, associated mining studies and metallurgical testwork at the East Sampson Dam prospect." - Mr Shane Sadleir (Moho Managing Director)*



**Figure 1: Location of M27/263 in relation to regional geology of Silver Swan North Project**

M27/263 forms part of Moho's Silver Swan North Project located 50km north of Kalgoorlie and is close to established mine infrastructure and gold processing facilities (Figure 1). The granted mining lease covers a number of auger geochemical anomalies including the highly mineralised East Sampson Dam prospect (Figure 2).



**Figure 2: Auger geochemical anomalies identifying new drill targets (source: ASX release by Lawson Gold Ltd, 12 September 2011 "New Gold Exploration Targets Identified and Follow-up Exploration Planned").**



Moho recently announced high grade gold intersections in RC drilling at the East Sampson Dam prospect<sup>1</sup> and has commenced mining studies towards a potential gold production scenario<sup>2</sup>.

The 100% acquisition of M27/263 removes any budget and management constraints associated with the now terminated joint venture and enables Moho to expedite exploration and mining studies under its own management.

The Company expects to begin its next round of RC drilling at East Sampson Dam to infill and extend the existing zone of mineralisation shortly. This campaign is expected to build on the significant gold results achieved in the company's last RC drill campaign announced on 11 February 2020.

---

<sup>1</sup> ASX announcement 11 February 2020 "Significant Gold Assays at East Sampson Dam Prospect"

<sup>2</sup> ASX announcement 16 April 2020 "Gold Mining Investigations Update East Sampson Dam Prospect"

**MAP OF MOHO's PROJECT AREAS**

Moho Resources Ltd is an Australian mining company which listed on the ASX in November 2018. The Company is focused on gold and nickel exploration at Empress Springs, Silver Swan North and Burracoppin.

Moho's Board is chaired by Mr Terry Streeter, a well-known and highly successful West Australian businessman with extensive experience in funding and overseeing exploration and mining companies, including Jubilee Mines NL, Western Areas NL and Midas Resources Ltd.

Moho has a strong and experienced Board lead by geoscientist Shane Sadleir as Managing Director, Commercial Director Ralph Winter and Adrian Larking, lawyer and geologist, as Non-Executive Director.

Highly experienced geologists Bob Affleck (Exploration Manager) and Max Nind (Principal Geologist) are supported by leading industry consultant geophysicist Kim Frankcombe (ExploreGeo Pty Ltd) and experienced consultant geochemists Richard Carver (GCXplore Pty Ltd) and Dr Carl Brauhart (CSA Global Pty Ltd). Dr Jon Hronsky (OA) provides high level strategic and technical advice to Moho.

**ENDS**

The Board of Directors of Moho Resources Ltd authorised this announcement to be given to ASX.

**For further information please contact:**

Shane Sadleir, Managing Director  
T: +61 411 704 498  
E: [shane@mohoresources.com.au](mailto:shane@mohoresources.com.au)

Ralph Winter, Commercial Director  
T: +61 435 336 538  
E: [ralph@mohoresources.com.au](mailto:ralph@mohoresources.com.au)