

PHASE 1 RC DRILLING UNDERWAY AT EAST SAMPSON DAM GOLD PROSPECT

ASX
ANNOUNCEMENT
10 July 2020

CORPORATE DIRECTORY

NON EXECUTIVE CHAIRMAN
Terry Streeter

MANAGING DIRECTOR
Shane Sadleir

COMMERCIAL DIRECTOR
Ralph Winter

NON EXECUTIVE DIRECTOR
Adrian Larking

JOINT COMPANY SECRETARIES
Ralph Winter / David McEntaggart

ASX: MOH

CORPORATE ADDRESS

L11/216 ST GEORGES TCE
PERTH 6000

T +61 (08) 9481 0389
+61 (08) 9463 6103

E admin@mohoresources.com.au

W www.mohoresources.com.au

HIGHLIGHTS:

- Moho kicks off extensive four stage drill program at highly mineralised East Sampson Dam gold prospect
- Phase 1 of - 15 RC drill holes (~1,400m) now underway
- Phase 1 objective is resource definition infill drilling to extend gold mineralisation intersected by Moho in September 2018¹ and October 2019² RC drill programs, including:
 - SSMH0051: 15m @ 4.71 g/t Au from 88m
incl. 3m @ 15.18 g/t Au from 100m
 - SSMH0062: 5m @ 10.36 g/t Au from 59m
incl. 2m @ 24.61 g/t Au from 56m
 - SSMH0075: 9m @ 4.28 g/t Au from 19m
incl. 3m @ 3.37 g/t Au from 19m, and 1m @ 24.3 g/t Au from 25m
 - SSMH0056: 11m @ 3.11 g/t Au from 65m
incl. 1m @ 17.7 g/t Au from 72m
 - SSMH0063: 2m @ 17.0 g/t Au from 73m
 - SSMH0077: 2m @ 12.33 g/t Au from 88m
incl. 1m @ 22.8 g/t Au at 89m (EOH)

NEXT STEPS:

- Phase 1 RC drill assay results - August 2020
- Phase 2 RC drill program (25 RC holes; ~2,100m) – Q3, 2020
- Diamond drilling (6 holes, ~600m) for structural, geotechnical and metallurgical studies – Q3, 2020
- Preliminary metallurgical testwork results – Q3, 2020
- Infill auger sampling of existing gold anomalies – Q4, 2020
- Aircore drilling of auger gold anomalies and geophysical targets within M27/263 – Q4, 2020
- Maiden JORC 2012 Mineral Resource – Q4 2020
- Scoping Study – Q1, 2021

¹ASX announcement by Moho, 19 December 2018: "High grade gold assays from one metre samples at Silver Swan North"

²ASX announcement by Moho, 11 February 2020: "Significant gold assays at East Sampson Dam prospect"

Moho Resources Ltd (ASX:MOH) (**Moho** or **Company**) is pleased to announce that it has begun its' third reverse circulation (RC) drilling program as part of its resource definition studies to infill and extend gold mineralisation at the East Sampson Dam gold prospect on M27/263 (Figure 1).

Phase 1 of the RC program involves 15 holes for ~1,400m of RC drilling. Refer to Figure 2 for proposed drill hole collar locations in relation to gold intersections from the October 2019 RC drill program.

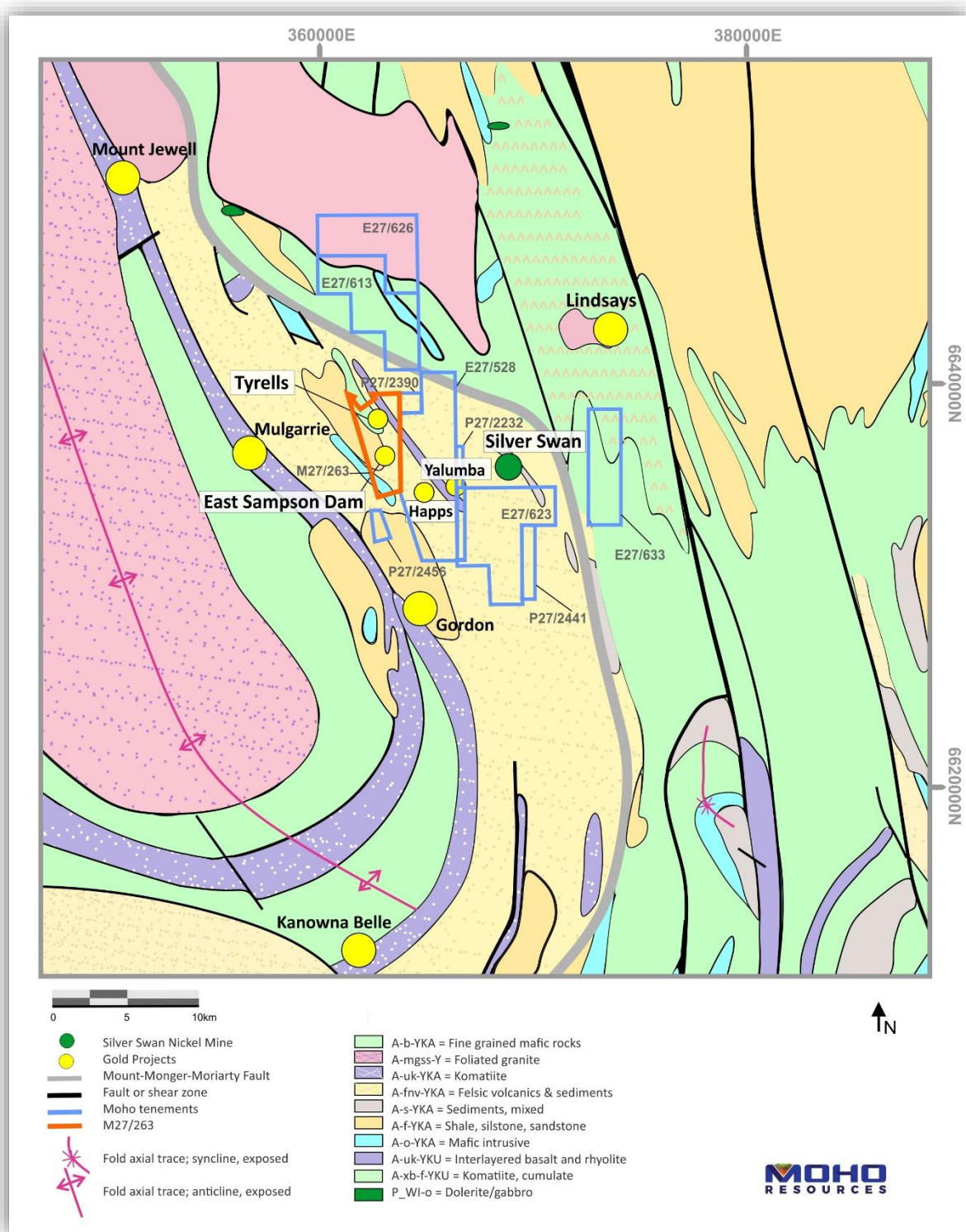


Figure 1: Location of Moho's tenements, including M27/263 (highlighted) in relation to regional geology of Silver Swan North Project

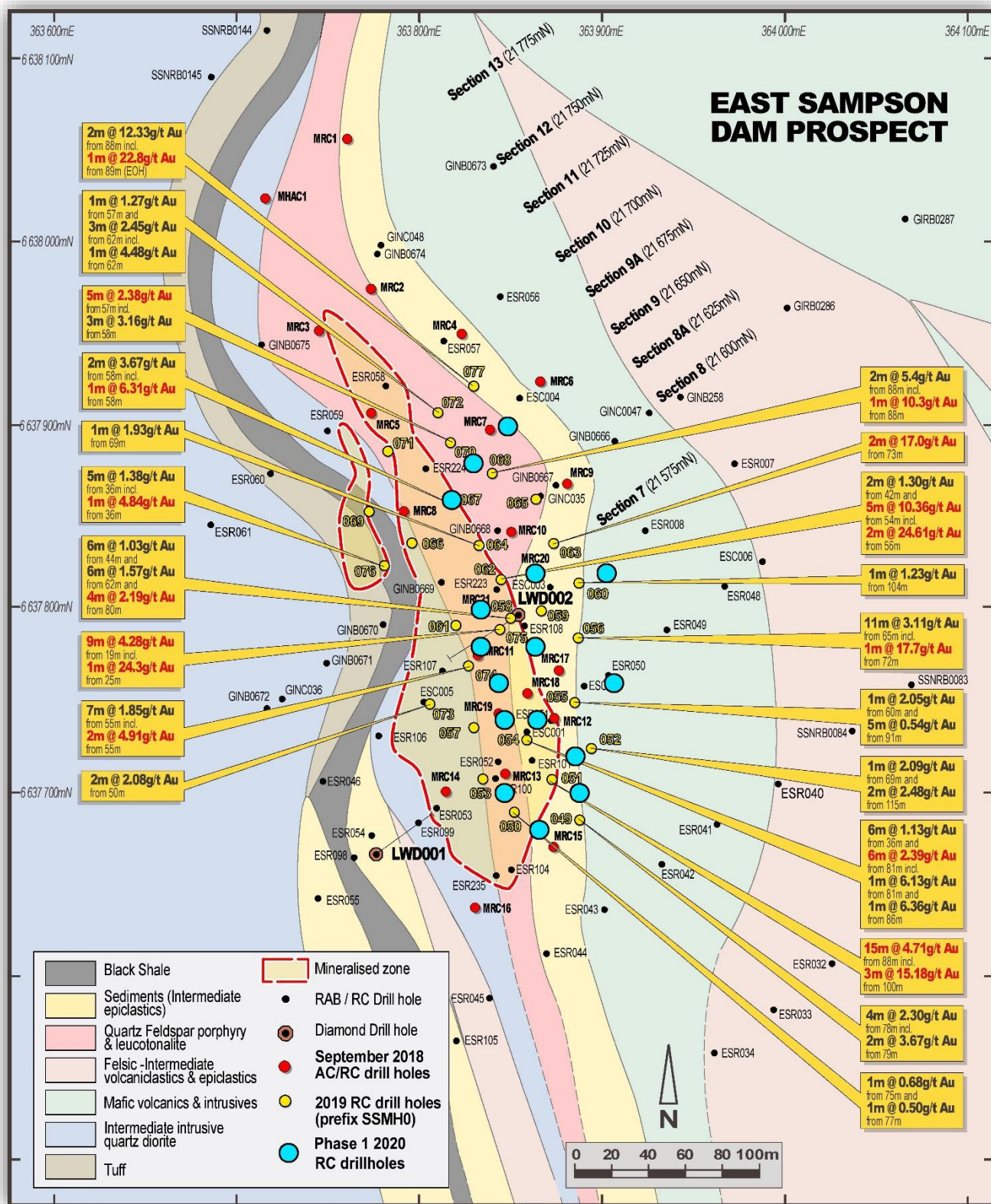


Figure 2: Proposed location of Phase 1 2020 RC drill program collars in relation to current mineralised zone and gold intersections in RC drill program undertaken by Moho in October 2019

The East Sampson Dam gold prospect is a key element of the Silver Swan North Project which is well located close to existing gold processing facilities and mining infrastructure. Moho believes that, if mineralisation is extended and a suitable gold resource established, it could provide an important cash flow for the Company.

Moho's Interest in Silver Swan North Tenements

On 24th June 2020, Moho announced it had signed a binding Heads of Agreement with joint venture partner Odin Metals Ltd (ASX:ODM) to acquire ODM's 30% interest in M27/263, subject to shareholder approval. Moho is the 100% registered owner of granted tenements E27/528, P27/2232, P27/2390 & E27/613 and applied for E27/623, E27/626, E27/633, P27/2441, & P27/2456 all of which, in conjunction with M27/263, comprise the Silver Swan North Project.

About Moho Resources Ltd



MAP OF MOHO'S PROJECT AREAS

Moho Resources Ltd is an Australian mining company which listed on the ASX in November 2018. The Company is focused on gold and nickel exploration at Empress Springs, Silver Swan North and Burracoppin.

Moho's Board is chaired by Mr Terry Streeter, a well-known and highly successful West Australian businessman with extensive experience in funding and overseeing exploration and mining companies, including Jubilee Mines NL, Western Areas NL and Midas Resources Ltd.

Moho has a strong and experienced Board lead by geoscientist Shane Sadleir as Managing Director, Commercial Director Ralph Winter and Adrian Larking, lawyer and geologist, as Non-Executive Director.

Highly experienced geologists Bob Affleck (Exploration Manager) and Max Nind (Principal Geologist) are supported by leading industry consultant geophysicist Kim Frankcombe (ExploreGeo Pty Ltd) and experienced consultant geochemists Richard Carver (GCXplore Pty Ltd) and Dr Carl Brauhart (CSA Global Pty Ltd).

Moho's geophysical programs and processing and analysis of the results are supervised by Kim Frankcombe (ExploreGeo Pty Ltd) who is a geologist and geophysicist with 40 years' experience in mineral exploration. He has worked for major mining companies, service companies and for over 20 years as an independent geophysical consultant. He was a member of the discovery team for several significant deposits including one Tier 1 deposit. He manages the ExploreGeo consulting group which provides specialist geophysical advice to explorers.

Dr Jon Hronsky (OA) provides high level strategic and technical advice to Moho. Jon has more than thirty years of experience in the global mineral exploration industry, primarily focused on project generation, technical innovation and exploration strategy development. He has worked across a diverse range of commodities and geographies, and has particular expertise in targeting nickel sulphide and gold deposits.

ENDS

The Board of Directors of Moho Resources Ltd authorised this announcement to be given to ASX.

For further information please contact:

Shane Sadleir, Managing Director
T: +61 411 704 498
E: shane@mohoresources.com.au

Ralph Winter, Commercial Director
T: +61 435 336 538
E: ralph@mohoresources.com.au