

ASX ANNOUNCEMENT

14 July 2020

Heli-supported exploration commences at Lake Throssell

Initial program of helicopter-supported on-lake surface brine sampling now underway

Lake Throssell Sulphate of Potash Project – *new high-grade discovery*

- All final approvals received and initial program of helicopter-supported 24-hole shallow rotary drilling covering the lake (playa) surface now underway.
- The program is designed to follow up the high-grade results of up to 14,800mg/L SOP generated from auger sampling in December 2019.
- Q3 exploration program is expected to underpin a potential maiden JORC Mineral Resource for Lake Throssell, subject to results.

Further to its announcement of 7 July, Trigg Mining Limited (**ASX: TMG**) (Trigg or the Company) is pleased to advise that ground-based exploration activities have commenced at its flagship 100%-owned **Lake Throssell Sulphate of Potash Project** in Western Australia (Figure 1).

The start of exploration follows the approval of the program of works and required approvals last week, allowing the Company to move ahead with its first field-based exploration program at Lake Throssell since its discovery last year.



Figure 1: Helicopter-supported sampling programs underway at Lake Throssell.

The initial 24-hole shallow (<12m) lake rotary drilling program (Figure 2) is designed to target near-surface brine mineralisation to depths suitable for potential trench-based extraction methods and is expected to be completed in approximately two weeks. As part of this program, areas of observed high-gypsum content are also planned to be tested. These areas have the potential to supply high flow rates due to increased porosity and permeability, as well as elevated SOP content.

Following this program, a gravity survey will be carried out to extend the lines across the lake and in-fill the results of the survey carried out prior to COVID-19 restrictions. This will further refine the locations of the off-lake air core program scheduled to commence once all approvals are received (see ASX announcement, 7 July 2020).

Results from the field work, if successful, will underpin a maiden JORC Mineral Resource for the Lake Throssell SOP Project.

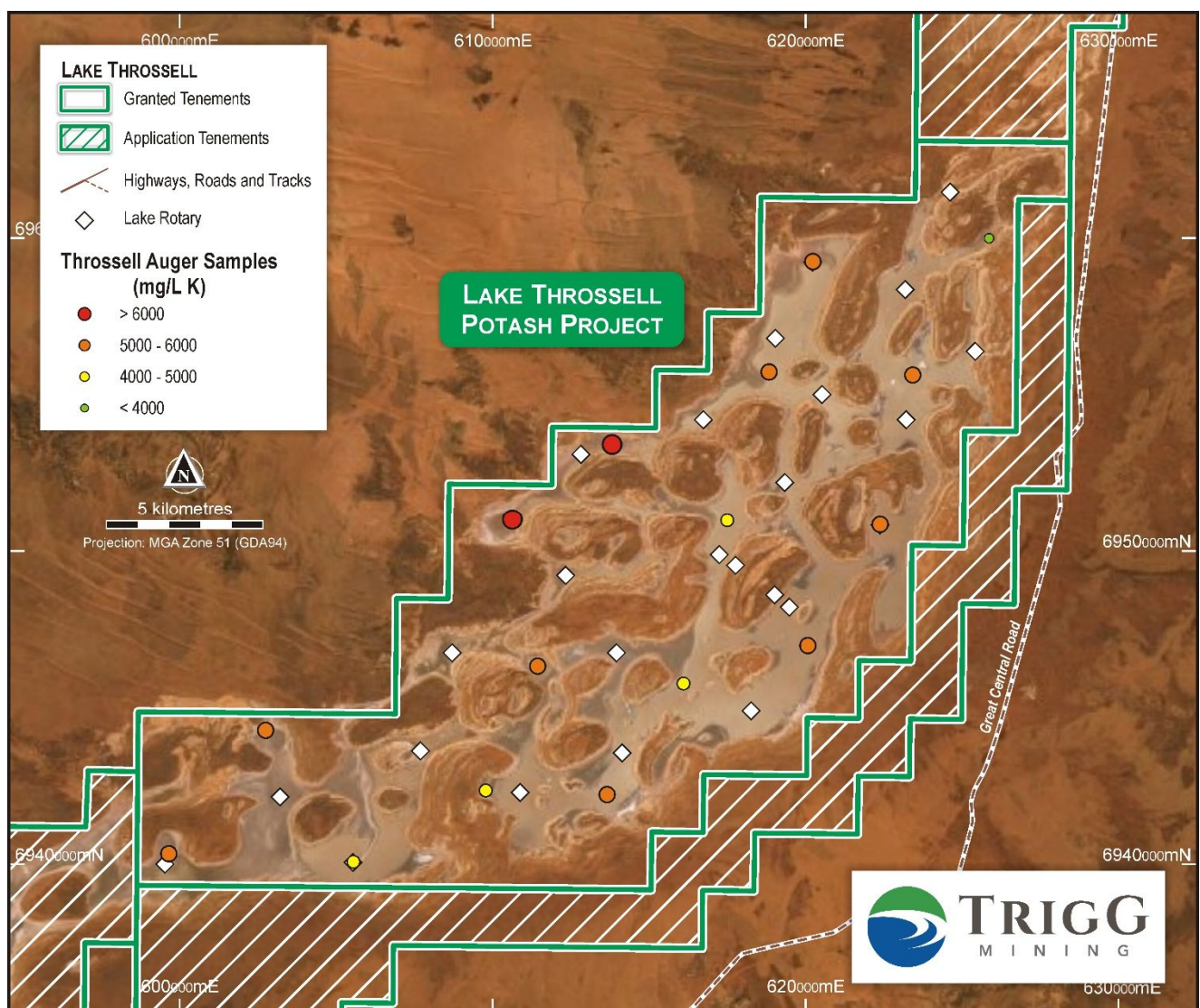


Figure 2: Lake Throssell rotary drilling targets

Management Comment

Trigg Mining's Managing Director, Keren Paterson, said: *"We're thrilled to have our teams back out in the field progressing this flexible, helicopter-supported program that will generate invaluable data to follow-up the high-grade auger drilling results reported late last year."*

"This is the start of what we anticipate will be a very busy period for the Company as we evaluate the Lake Throssell SOP Project, which we regard as the jewel in the crown of our SOP portfolio east of Laverton in WA. We are very excited about what the next few months can deliver as we begin to move up the value curve at Lake Throssell."

Authorised by:

Trigg Mining Limited



Keren Paterson

Managing Director & CEO

For more information please contact:

Keren Paterson
Managing Director & CEO
Trigg Mining Limited
(08) 6114 5685
info@triggmining.com.au

Nicholas Read
Investor and Media Relations
Read Corporate
(08) 9388 1474
nicholas@readcorporate.com.au

About Trigg Mining

Trigg Mining is looking to secure Australia's sustainable agriculture future through the exploration of essential potassium fertiliser, sulphate of potash (SOP), necessary for global food production and human nutrition. SOP provides essential macro nutrients for plant growth without any detrimental elements, such as chloride found in muriate of potash (MOP). In addition, SOP can be produced sustainably through the solar evaporation of potassium-rich hypersaline brine water, without the need for large open pits or waste-rock dumps.

The Trigg Mining SOP Projects are located nearby established energy and transport infrastructure for access to Australian and international agricultural markets, approximately 170km east of Laverton in WA and including the high-grade discovery at Lake Throssell and a JORC Compliant Mineral Resource of 6Mt of SOP at Lake Rason. The Projects cover approximately 1,500km² and contain over 380km² of salt lake playa and 140km of interpreted palaeochannels (ancient underground rivers) all highly prospective for brine hosted SOP.

Competent Person Statement

The information in this announcement that relates to exploration results is based upon information compiled by Mr Neil Inwood, as Trigg's Technical Manager. Mr Inwood is a Fellow of the Australasian Institute of Mining and Metallurgy and has sufficient experience which is relevant to the style of mineralisation and type of deposit under consideration and to the activity which he is undertaking to qualify as a Competent Person as defined in the 2012 edition of the "Australasian Code for Reporting of Exploration Results, Mineral Resources and Ore Reserves". Mr Inwood consents to the inclusion in the announcement of the matters based upon the information in the form and context in which it appears.

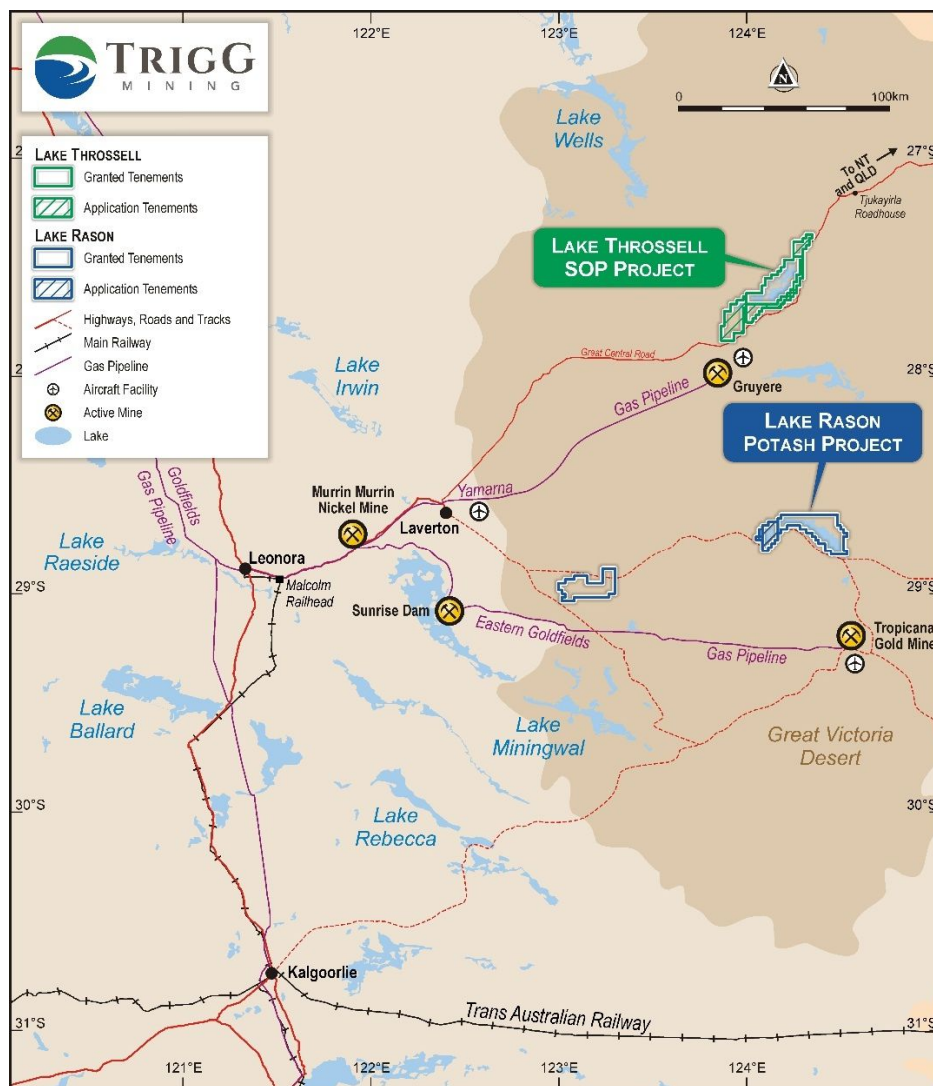


Figure 3: Location of Trigg Mining's SOP Projects showing established infrastructure