

PHASE 1 RC DRILLING COMPLETED AT EAST SAMPSON DAM GOLD PROSPECT

ASX
ANNOUNCEMENT

16 July 2020

CORPORATE DIRECTORY

NON EXECUTIVE CHAIRMAN
Terry Streeter

MANAGING DIRECTOR
Shane Sadleir

COMMERCIAL DIRECTOR
Ralph Winter

NON EXECUTIVE DIRECTOR
Adrian Larking

JOINT COMPANY SECRETARIES
Ralph Winter / David McEntaggart

ASX: MOH

CORPORATE ADDRESS

L11/216 ST GEORGES TCE
PERTH 6000

T +61 (08) 9481 0389
+61 (08) 9463 6103

E admin@mohoresources.com.au

W www.mohoresources.com.au

HIGHLIGHTS:

- Phase 1 of resource definition RC drill program at East Sampson Dam gold prospect completed
- 16 RC holes drilled for total of 1,426m
- Samples submitted to SGS laboratory in Kalgoorlie for expedited fire assaying for gold

NEXT STEPS:

- Phase 1 assay results – expected August, 2020
- Preliminary metallurgical testwork results – expected August, 2020
- Phase 2 RC drill program (25 RC holes; ~2,100m) – Q3, 2020
- Diamond drilling (6 holes, ~600m) for structural, geotechnical and metallurgical studies – Q3, 2020
- Infill auger sampling of existing gold anomalies – Q4, 2020
- Aircore drilling of auger gold anomalies and geophysical targets within M27/263 – Q4, 2020
- Maiden JORC 2012 Mineral Resource – Q4 2020
- Scoping Study – Q1, 2021

“Moho is expediting the gold exploration programs and mining studies around East Sampson Dam as they are important steps for the Company’s future development and growth”

Mr Shane Sadleir, Moho Managing Director

Moho Resources Ltd (ASX:MOH) (**Moho** or **Company**) is pleased to announce that it has completed Phase 1 of the 2020 reverse circulation (RC) drilling program as part of its resource definition studies to infill and extend gold mineralisation at the East Sampson Dam gold prospect on M27/263 (Figure 1).

Phase 1 of the RC program completed 16 holes totaling 1,426m of RC drilling. The drill samples have been submitted to SGS in Kalgoorlie for expedited fire assaying and the company and results are expected in August 2020.

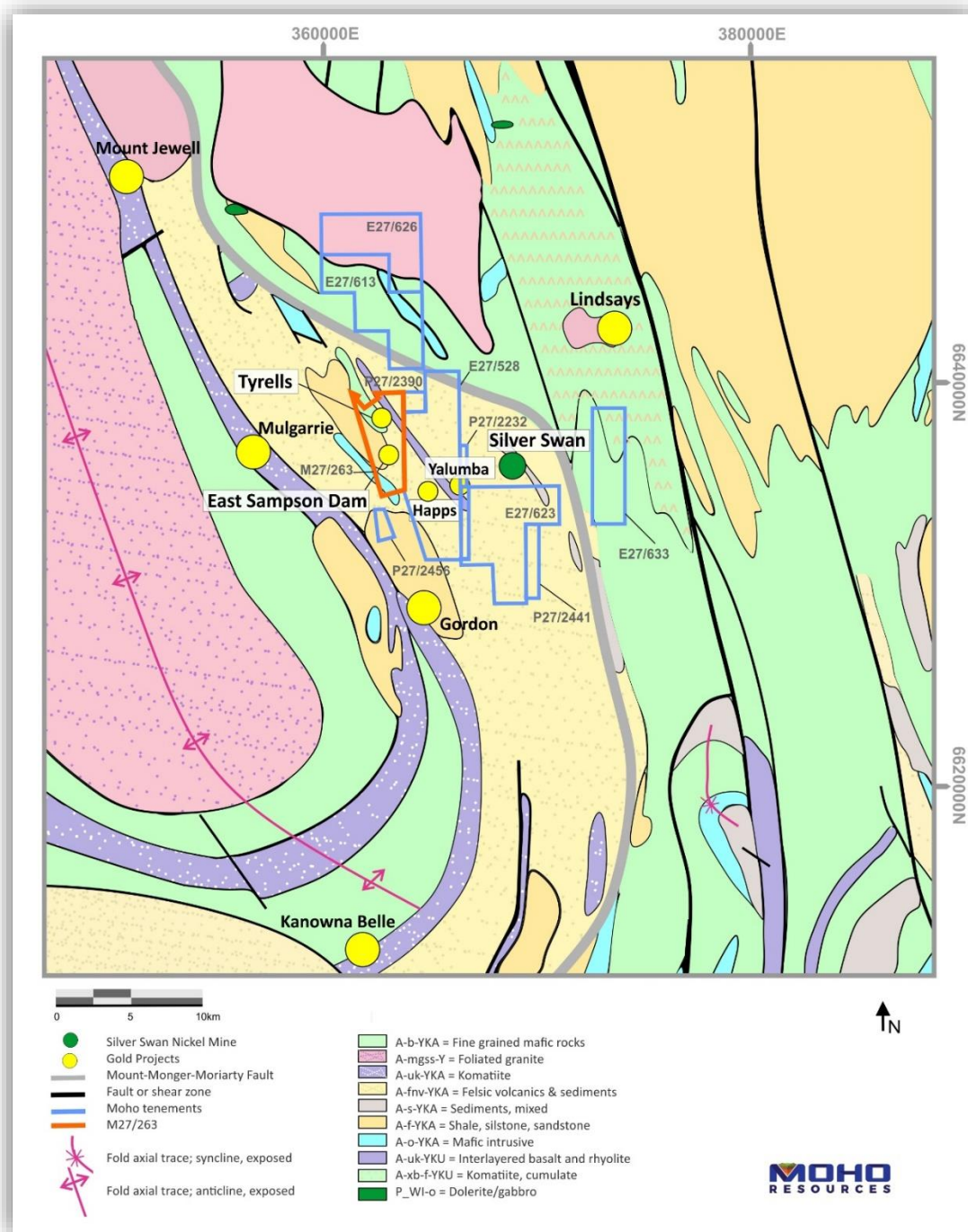


Figure 1: Location of Moho’s tenements, including M27/263 (highlighted) in relation to regional geology of Silver Swan North Project

ENDS

The Board of Directors of Moho Resources Ltd authorised this announcement to be given to ASX.

For further information please contact:

Shane Sadleir, Managing Director
T: +61 411 704 498
E: shane@mohoresources.com.au

Ralph Winter, Commercial Director
T: +61 435 336 538
E: ralph@mohoresources.com.au