

# Castile Resources Limited

## ASX : CST

Investor Presentation  
July 2020



# Compliance & General Disclaimer



## JORC COMPLIANCE STATEMENT

### Competent Persons Statements

The information in this report that relates to Exploration Results and Mineral Resources and Exploration Data is based on, and fairly represents, information and supporting documentation compiled Mr. Jake Russell B.Sc. (Hons) MAIG who has sufficient experience which is relevant to the styles of mineralization, the types of deposit under consideration and to the activities which he is undertaking to qualify as a Competent Person as defined in the 2012 Editions of the "Australasian Code for Reporting of Exploration Results, Mineral Resources and Ore Reserves (JORC 2012)". Mr Russell consents to the inclusion in this report of the matters based on this information in the form and context in which it appears. Mr Russell is a Director of Castile Resources Limited and is eligible to and may participate in any short-term and long-term incentive plans of the Company as disclosed in its annual reports and disclosure documents.

### GENERAL DISCLAIMER

This presentation has been prepared by Castile Resources Limited. It should not be considered as an offer or invitation or inducement to subscribe for the purchase of any securities in the Company. This presentation may contain forecasts and forward-looking statements. Such forecasts, projections and information are not a guarantee of future performance, involve unknown risks and uncertainties. Actual results and developments may differ materially from those expressed or implied. Castile has not audited or investigated the accuracy or completeness of the information, statements and opinions contained in this presentation. Accordingly, to the maximum extent permitted by applicable laws, Castile makes no representation and can give no assurance, guarantee or warranty, express or implied, as to, and take no responsibility and assume no liability for, the authenticity, validity, accuracy, suitability or completeness of, or any errors in or omission, from any information, statement or opinion contained in this presentation.

This overview of Castile does not purport to be all inclusive or to contain all information which its recipients may require in order to make an informed assessment of the Company's prospects. You should conduct your own investigation and perform your own analysis in order to satisfy yourself as to the accuracy and completeness of the information, statements and opinions contained in this presentation before making any investment decision.

The information in this presentation is general in nature and does not purport to be complete. This presentation is not a prospectus, disclosure document or other offering document under Australian law or under the laws of any other jurisdiction. This presentation is provided for information purposes and does not constitute an offer, invitation, inducement or recommendation to subscribe for or purchase securities in Castile Resources in any jurisdiction.

### PREVIOUSLY REPORTED INFORMATION

This presentation refers to information, including mineral resource estimates and exploration results, previously announced to the ASX on 12 February 2020 in its Prospectus dated 3 December 2019. The Company confirms that it is not aware of any new information or data that materially affects the information included in the original market announcements or this presentation, and that all material assumptions and technical parameters underpinning the mineral resource estimates continue to apply and have not materially changed.

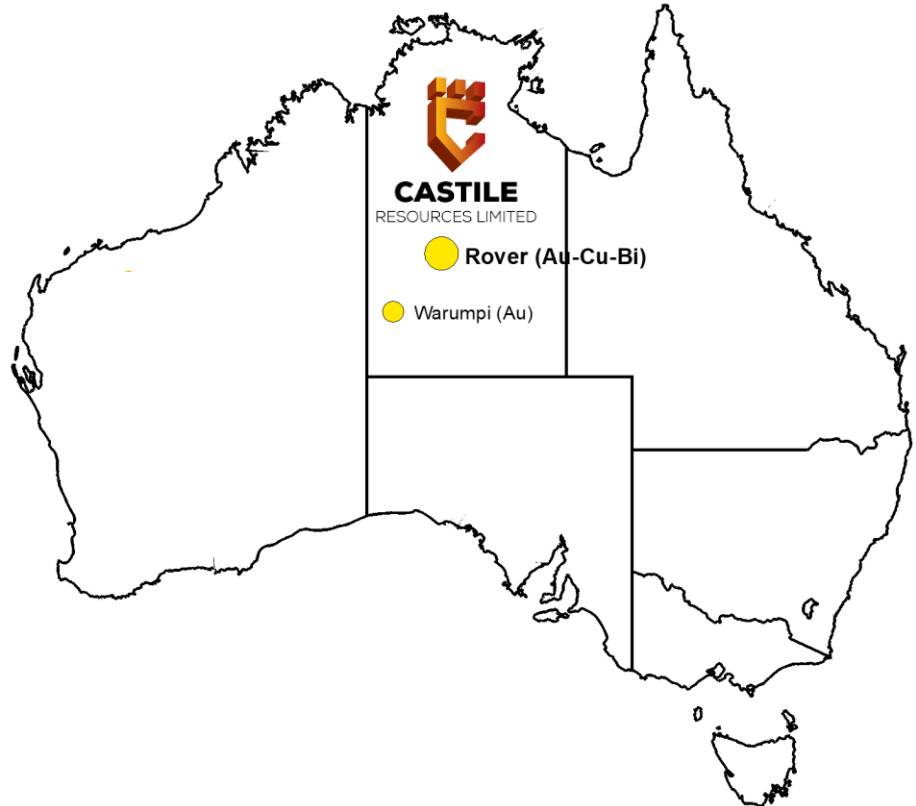
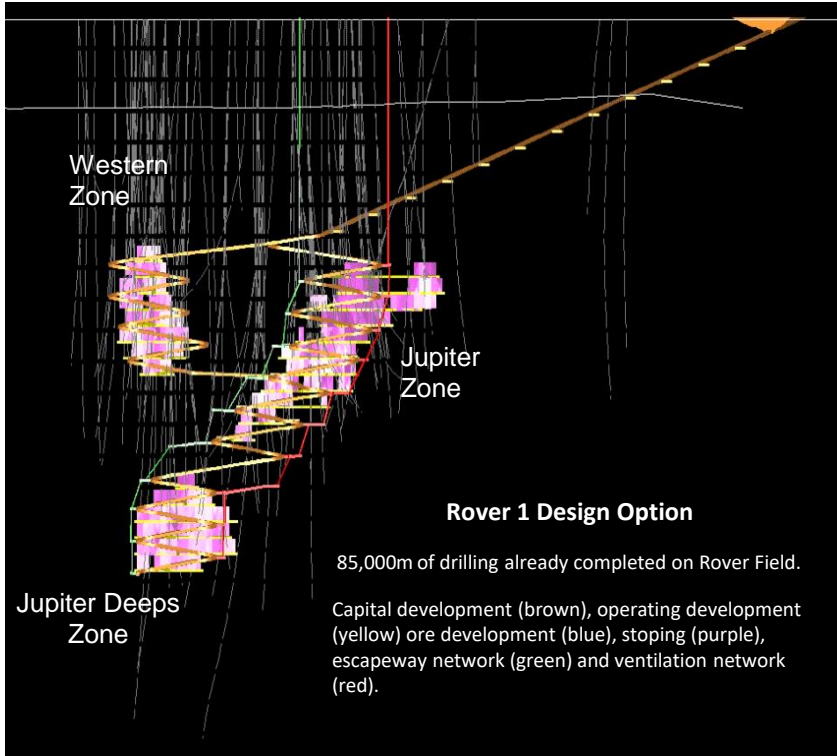
This presentation was released on 30 July 2020, and was authorised for release by Mark Hepburn, Managing Director of Castile Resources Limited  
Castile Resources Limited – Level 7, Ashton Chambers, 189 St Georges Terrace, Perth WA 6000.



Castile Resources Limited  
**Buried Treasure in the Territory**

<b>ASX Code</b>	<b>CST</b>
<b>Shares on Issue</b>	<b>199.7M</b>
<b>Share Price</b>	<b>A\$0.24</b>
<b>Market Capitalisation</b>	<b>A\$48M</b>
<b>Cash (30 June 2020)</b>	<b>A\$17.23M</b>

# Pre-Feasibility continues at the Rover 1 Gold Project



# Gold Exploration Drilling to Begin at Rover 1

## Rover 1 Gold Project Drilling Program August 2020

Ganymede Gold Exploration Target

Western Deeps Gold Copper Exploration  
Target

Jupiter (and Deeps) Resource Definition



**United Drilling Rig Mobilising to Site**

## Gold Intercepts

**10m @ 47.97g/t Au**

from 471m in R1ARD41-1

**7m @ 125.93 g/t Au**

from 542m in WGR1D034

**20m @ 32.61 g/t Au**

from 469m in WGR1D003

**23m @ 13.22 g/t Au**

from 833m in WGR1D059-2A1

**22.75m @ 21.89 g/t Au**

from 499m in WGR1D002-5

**12m @ 58.40 g/t Au**

from 555m in WGR1D002-5



**Drill core from Rover 1**

## Copper Intercepts

**21m @ 6.86% Cu**

from 469m in WGR1D011

**27m @ 4.75% Cu**

from 429m in WGR1D024-1

**27m @ 3.26% Cu**

from 935m in WGR1D055-1

**30.2m @ 4.46% Cu**

from 827m in WGR1D059-2A1

**42m @ 4.10%Cu**

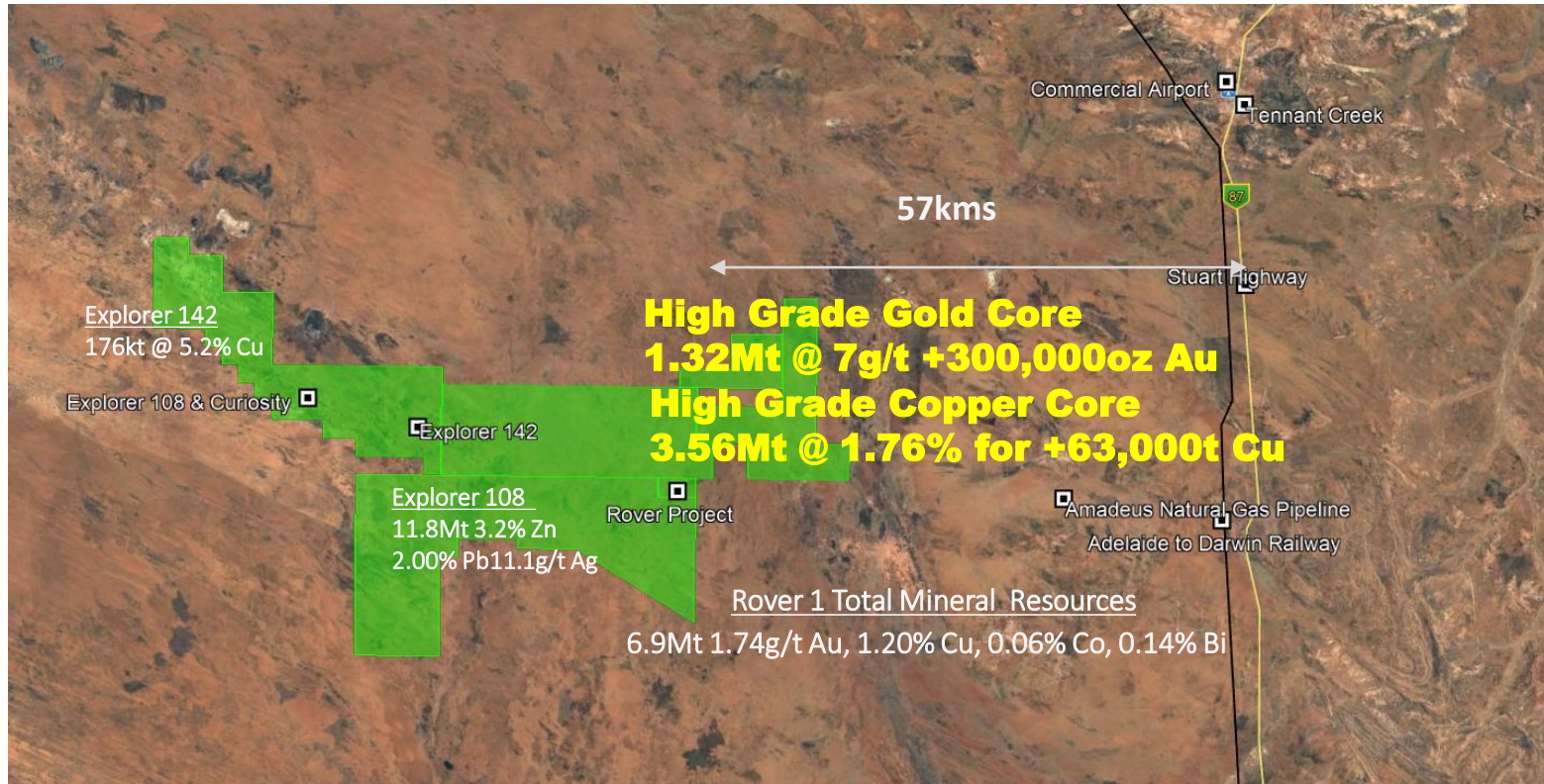
from 360m in R1ARD30

**29m @ 3.60% Cu**

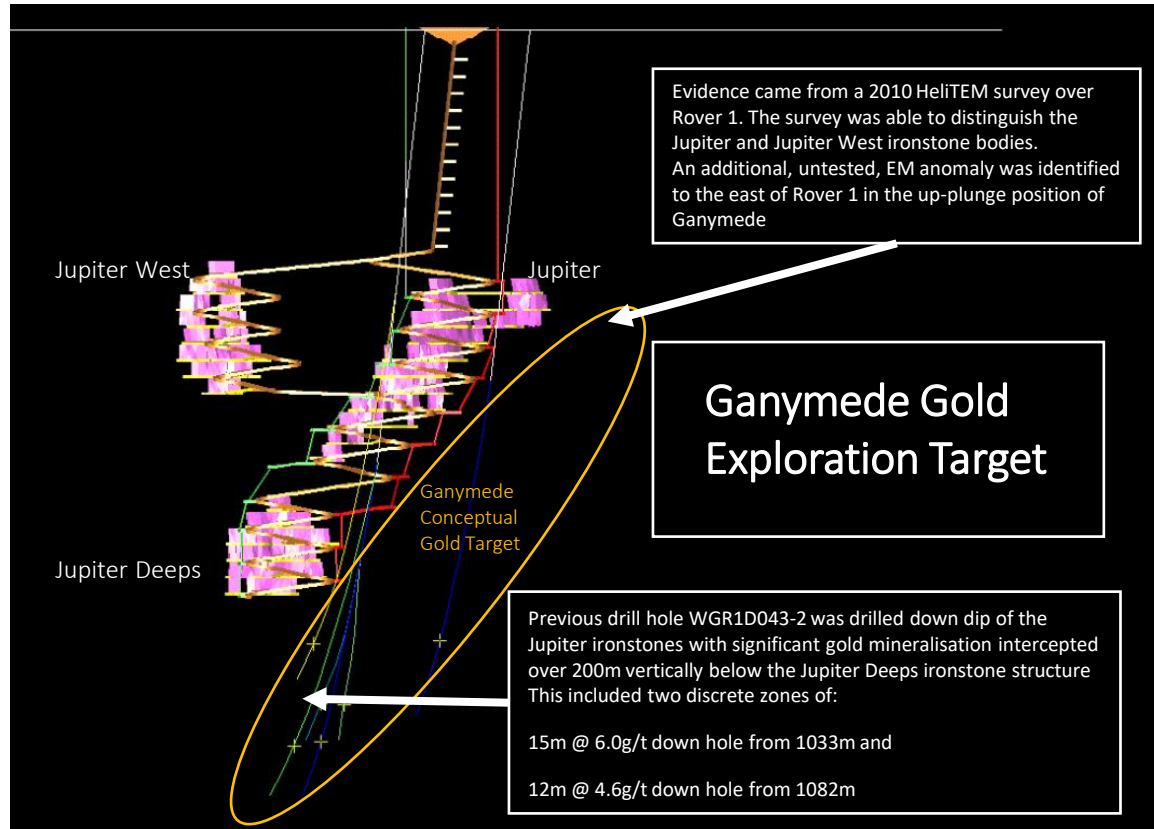
from 399m in WGR1D034-1

# The Rover Project Surrounding Infrastructure and Resources

Gas, Rail, Road and Commercial Airport close to a major regional centre



# Ganymede – Potential for an additional gold structure



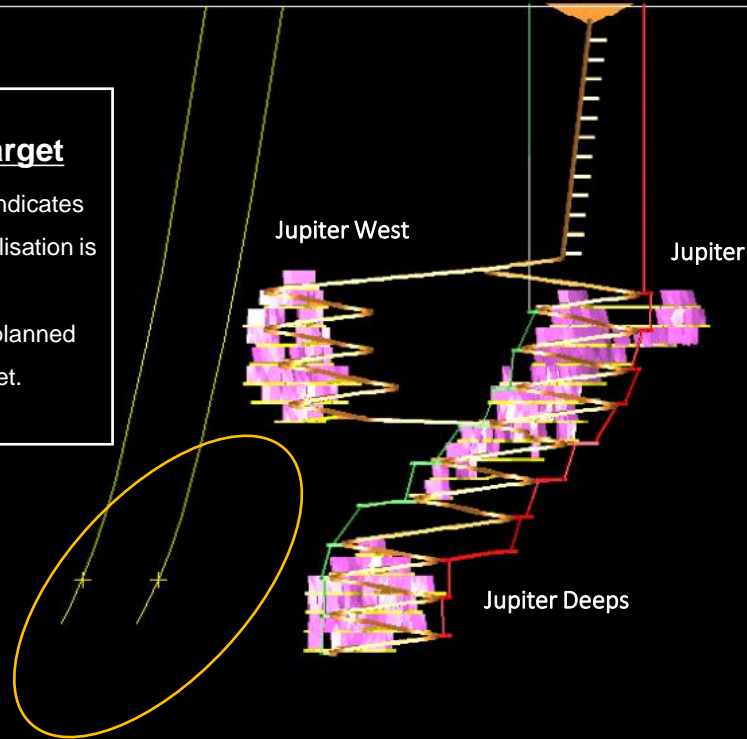


# Rover 1 – Exploration Drilling to Expand the Resource

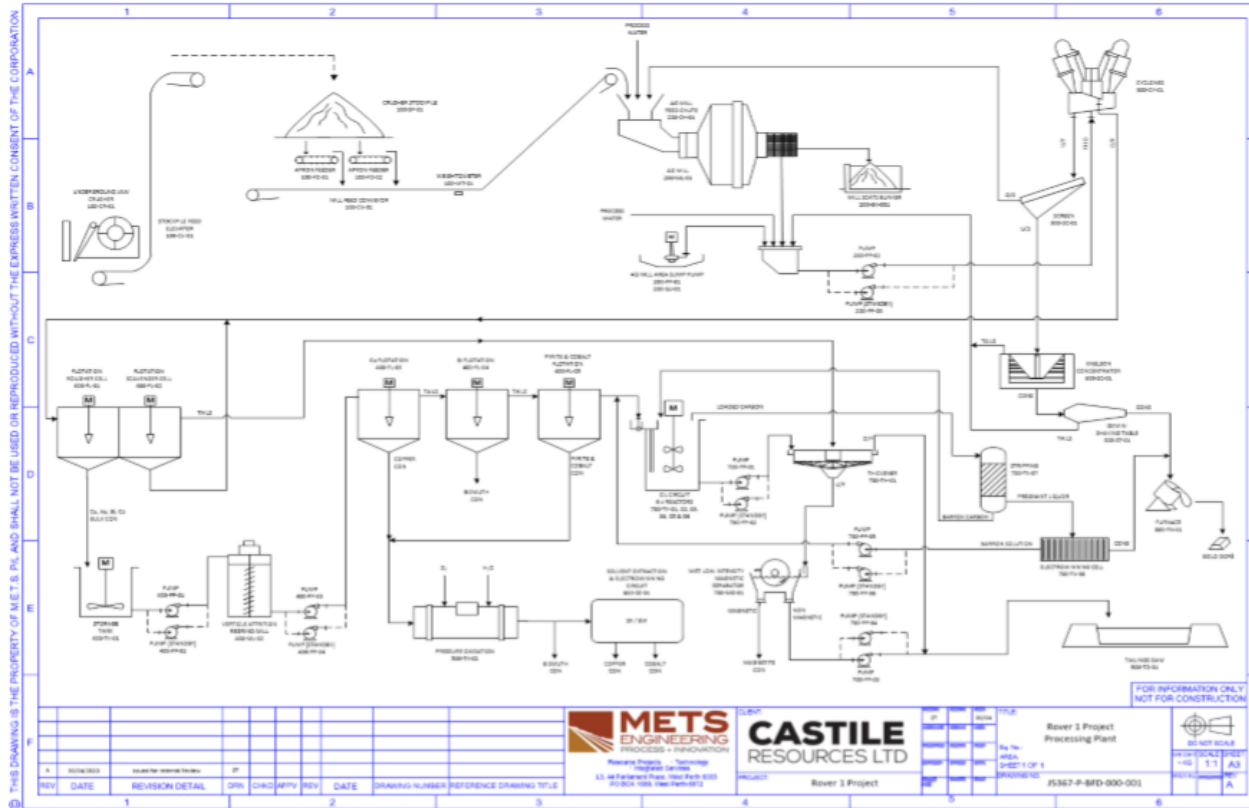
## Jupiter West Deeps Target

The Rover 1 geological model indicates a repeat of Jupiter West mineralisation is likely at depth.

Diamond drilling and DHEM is planned to evaluate this conceptual target.



# METS Engineering Study – Conceptual Flowsheet



METS Report suggests potential for additional by-product of Coal Washing Magnetite from waste ore

# Experienced Board & Management



## **Peter Cook**      **Non-Executive Chairman**

Mr Cook is a geologist BSc (App Geol 1983), mineral economist (MSc Min Econ 1995 WASM) and highly experienced veteran of the Australian resource sector. He is currently the Managing Director of Westgold and has more than a decade of association with the Company and its assets. Mr Cook has substantial experience in the exploration, development, mining, construction, permitting and financing of development projects within Australia as well as the corporate management of listed public entities.

## **Mark Hepburn**      **Managing Director**

Mr Hepburn has a degree in Economics and Finance (B.Econ. & Fin 1992 UWA) and has been a member of the Australian Institute of Company Directors since 2008. He has significant experience in institutional stockbroking, corporate transactions and the management and corporate development of public companies. He brings 28 years of substantial financial markets experience in the resources sector to Castile Resources. Mr Hepburn is also a Non-Executive Director of ASX listed lithium and gold explorer Mali Lithium after an acting role as CEO where he oversaw the company's refinancing and corporate re-structuring. He was also on the board of ASX listed Indonesian gold developer Sihayo Resources until November 2018.

## **John Braham**      **Non-Executive Director**

Mr Braham is an experienced Mining Finance and Investment professional having a 24-year career with Macquarie Bank until 2017. For the last 11 years of his service he was an Executive Director and co-head of Macquarie's Global Mining and Finance Division. Mr Braham has vast experience in the provision of debt and equity to mining, exploration and development companies, worldwide. Mr Braham brings Castile a set of finance and corporate skills to greatly assist with its future financing and development needs. Since November 2018, Mr Braham has served as Managing Director of the ASX listed and South American focused Equus Mining Limited.

## **Jake Russell**      **Non-Executive Director**

Mr Russell is a geologist B.Sc. (Hons) MAIG with circa 20 years of experience in exploration, mining, resource development and management. He is currently the group Chief Geologist of Westgold Resources Limited and prior to its demerger from Metals X Limited, he was the Group Chief Geologist of Metals X Limited. Mr Russell brings Castile a second to none knowledge of the assets of Castile and a high degree of technical expertise in their exploration, resource development and exploitation.

## **Michael Poepjes**      **Mining Engineer**

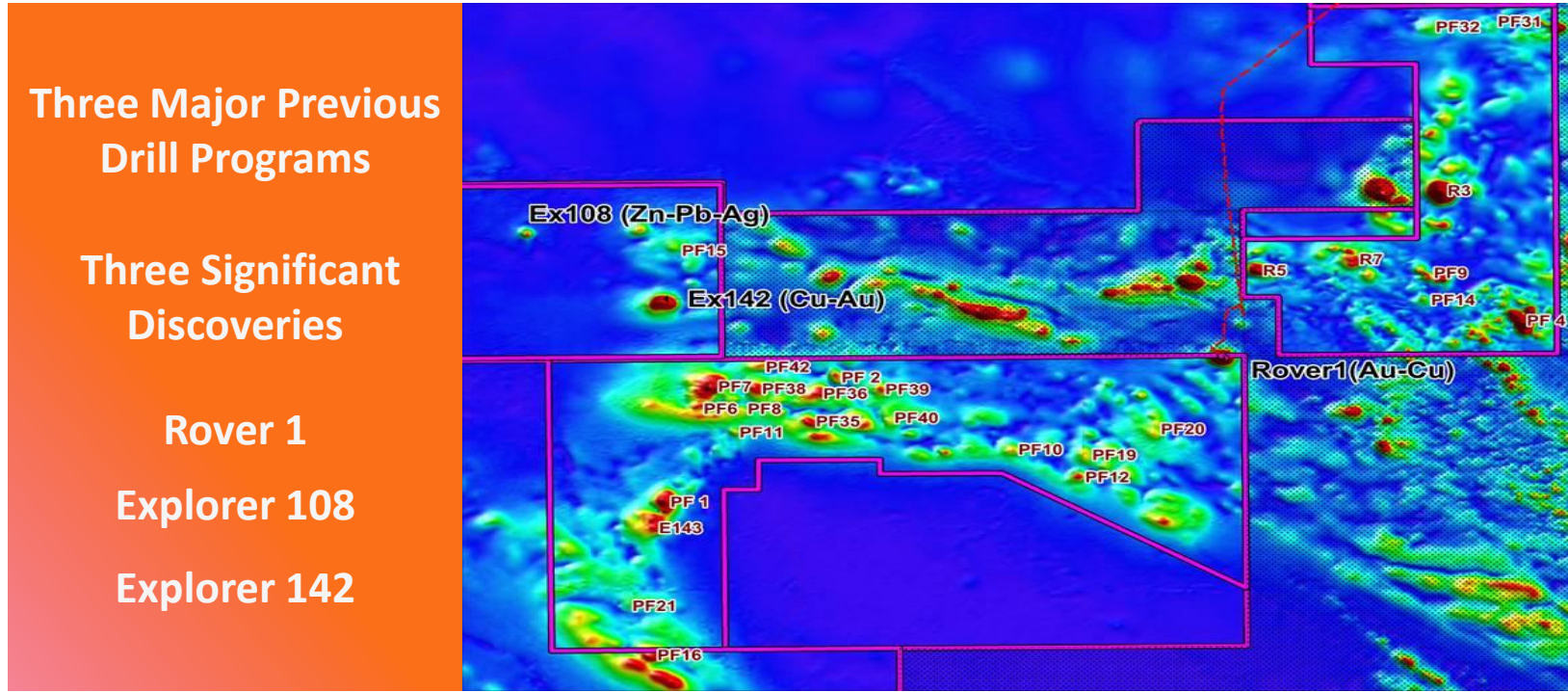
Mr Poepjes is a Mining Engineer (B Eng) a Mineral Economist (MSc [Min Econ]) and holds a Master's Degree in Business Administration (MBA). Mr Poepjes has over twenty years of experience in the mining industry working in gold, copper and tin across Australia in both Corporate and Operational roles. Mr Poepjes previous role was the Chief Operating Officer for Millennium Minerals. Prior to Millennium Minerals, he was the Group Mining Engineer for Metals X (which included the Westgold and Castile assets) for seven years.

## **Mark Savage**      **Geology Manager**

Mr Savage is a geologist B.Sc. (Hons) MAUSIMM with more than 20 years of experience in exploration, resource development and mining. Mr Savage brings a wealth of experience to Castile having worked previously for Metals X, RNI and Apex Minerals on pre-development assets.

# Rover Mineral Field Regional Geophysics

## Co-incident Magnetic and Gravity Anomalies Define numerous targets



## Castile Resources - The ASX's Newest Gold Explorer & Developer

- 1. Extensive portfolio in the highly prolific Tennant Creek gold province region in the Northern Territory**
- 2. Strategic focus on exploration & development at Rover 1**
  - High-grade gold/copper polymetallic orebody
  - Scoping study completed – Pre-Feasibility Study underway
  - Simple metallurgy with multiple ore bodies
  - Close to power and transport infrastructure
- 3. Significant exploration upside at prospective targets; Explorer 108 Prospect, Explorer 142 and Warumpi**
- 4. Strong Board & Management**



**CASTILE**  
RESOURCES LIMITED  
[www.castile.com.au](http://www.castile.com.au)

# Mineral Resource Statement



CASTILE RESOURCES LTD

INDEPENDENT TECHNICAL ASSESSMENT REPORT – ROVER AND WARUMPI PROJECTS

Table 3: Rover Project consolidated Mineral Resources (Rover 1, Explorer 108 and Explorer 142 deposits)

Project	Gold			Silver			Copper			Bismuth			Cobalt			Lead			Zinc			
	kt	Grade (g/t)	koz Au	kt	Grade (g/t)	koz Ag	kt	Grade	kt Co	kt	Grade	kt Bi	kt	Grade	kt Co	kt	Grade	kt Pb	kt	Grade	kt Zn	
<b>Indicated</b>																						
Explorer 108				8,438	14.32	3,886	5,689	0.36%	20.3							8,438	2.05%	172.8	8,438	3.41%	288.1	
Explorer 142																						
Rover 1	3,618	1.49	173	3,618	2.13	248	3,618	1.06%	38.3	3,618	0.17%	6.2	3,618	0.05%	1.8							
<b>Subtotal</b>	<b>3,618</b>	<b>1.49</b>	<b>173</b>	<b>12,056</b>	<b>10.66</b>	<b>4,134</b>	<b>9,307</b>	<b>0.63%</b>	<b>58.7</b>	<b>3,618</b>	<b>0.17%</b>	<b>6.2</b>	<b>3,618</b>	<b>0.05%</b>	<b>1.8</b>	<b>8,438</b>	<b>2.05%</b>	<b>172.8</b>	<b>8,438</b>	<b>3.41%</b>	<b>288.1</b>	
<b>Inferred</b>																						
Explorer 108				3,430	3.32	366										3,430	1.88%	64.3	3,430	2.81%	96.5	
Explorer 142	176	0.21	1				176	5.21%	9.2													
Rover 1	3,282	2.02	213	3,282	2.00	211	3,282	1.36%	44.6	3,282	0.10%	3.3	3,282	0.07%	2.3							
<b>Subtotal</b>	<b>4,458</b>	<b>1.93</b>	<b>214</b>	<b>6,712</b>	<b>2.67</b>	<b>577</b>	<b>3,458</b>	<b>1.56%</b>	<b>53.8</b>	<b>3,282</b>	<b>0.10%</b>	<b>3.3</b>	<b>3,282</b>	<b>0.07%</b>	<b>2.3</b>	<b>3,430</b>	<b>1.88%</b>	<b>64.3</b>	<b>3,430</b>	<b>2.81%</b>	<b>96.5</b>	
<b>Total</b>																						
Explorer 108				11,868	3.32	4,252	5,689	0.36%	20.3							11,868	2.00%	237.2	11,868	3.24%	384.6	
Explorer 142	176	0.21	1				176	5.21%	9.2													
Rover 1	6,900	1.74	386	6,900	2.07	459	6,900	1.20%	83.0	6,900	0.14%	9.4	6,900	0.06%	4.1							
<b>GRAND TOTAL</b>	<b>7,076</b>	<b>1.70</b>	<b>388</b>	<b>18,768</b>	<b>7.81</b>	<b>4,710</b>	<b>12,765</b>	<b>0.88%</b>	<b>112.5</b>	<b>6,900</b>	<b>0.14%</b>	<b>9.4</b>	<b>6,900</b>	<b>0.06%</b>	<b>4.1</b>	<b>11,868</b>	<b>2.00%</b>	<b>237.2</b>	<b>11,868</b>	<b>3.24%</b>	<b>384.6</b>	