

ASX ANNOUNCEMENT

28 August 2020

Trigg Mining – CEO Interview on Small Caps

Trigg Mining Limited (ASX: TMG) (Trigg or the Company) is pleased to advise that its Managing Director, Keren Paterson, was interviewed by Kerry Stevenson on the Small Caps Australian investor forum earlier this week.

The interview can be accessed via the link below:

<https://www.youtube.com/watch?v=qrfbRUJIsWo>

In the interview, Keren discusses the recent exploration results from its 100%-owned Lake Throssell Sulphate of Potash (SOP) Project in Western Australia, including:

- The significance of recent shallow heli-supported rotary drilling results;
- The very large gravity anomaly reported earlier this week, which has highlighted the potential scale of the Lake Throssell Project;
- The importance of Lake Throssell as a potential future domestic source of premium SOP including its infrastructure advantages and the project development timeline;
- Next steps, including the upcoming air-core drilling program and plans to deliver a maiden Inferred Mineral Resource by the end of the year.

This announcement was authorised to be given to ASX by the Board of Directors of Trigg Mining Limited.



Keren Paterson
Managing Director
Trigg Mining Limited

For more information please contact:

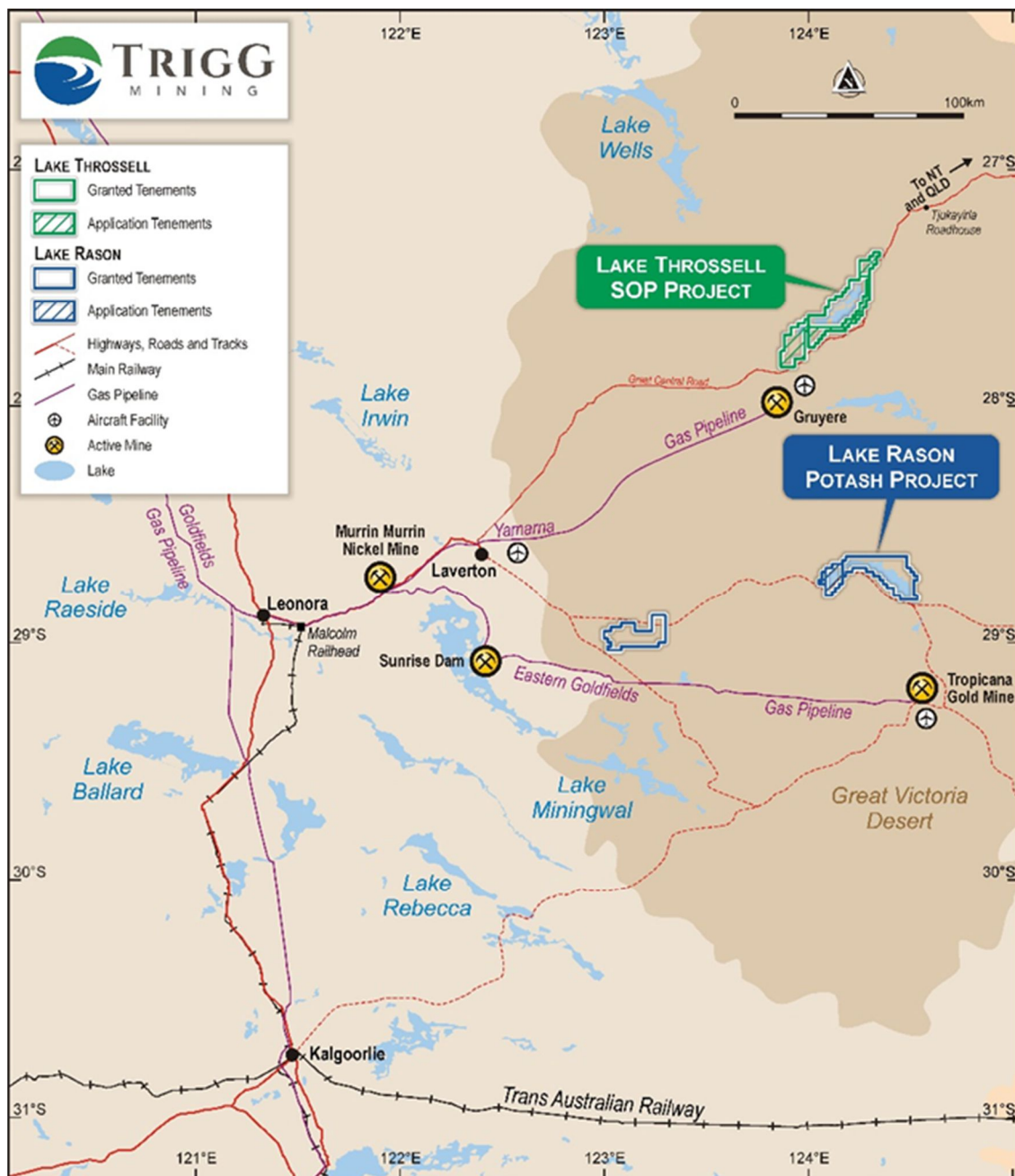
Keren Paterson
Managing Director
Trigg Mining Limited
(08) 6114 5685
info@triggmining.com.au

Nicholas Read
Investor and Media Relations
Read Corporate
(08) 9388 1474
nicholas@readcorporate.com.au

About Trigg Mining

Trigg Mining is looking to secure Australia's sustainable agriculture future through the exploration of essential potassium fertiliser, sulphate of potash (SOP), necessary for global food production and human nutrition. SOP provides essential macro nutrients for plant growth without any detrimental elements, such as chloride found in muriate of potash (MOP). In addition, SOP can be produced sustainably through the solar evaporation of potassium-rich hypersaline brine water, without the need for large open pits or waste-rock dumps.

The Trigg Mining SOP Projects are located nearby established energy and transport infrastructure for access to Australian and international agricultural markets, approximately 170km east of Laverton in WA including the high-grade discovery at Lake Throssell and a JORC Compliant Mineral Resource at Lake Rason (Figure 3). The Projects cover approximately 1,500km² and contain over 380km² of salt lake playa and 140km of interpreted palaeochannels (ancient underground rivers) all highly prospective for brine hosted SOP.



Location of Trigg Mining's SOP Projects showing established infrastructure