



METEORIC RESOURCES

DISCOVERING GOLD - 2020

Meteoric Resources NL -

Mines and Money September 2020





DISCLAIMER

The material in this presentation has been prepared by Meteoric Resources and is general background information about Meteoric's activities current as at the date of this presentation. This information is given in summary form and does not purport to be complete. Information in this presentation, including forecast financial information, should not be considered as advice or a recommendation to investors or potential investors in relation to holding, purchasing or selling securities or other financial products or instruments and does not take into account your particular investment objectives, financial situation or needs.

Before acting on any information you should consider the appropriateness of the information having regard to these matters, any relevant offer document and in particular, you should seek independent financial advice. All securities and financial product or instrument transactions involve risks, which include (among others) the risk of adverse or unanticipated market, financial or political developments and, in international transactions, currency risk.

This presentation may contain forward looking statements including statements regarding our intent, belief or current expectations with respect to Meteoric's businesses and operations, market conditions, results of operation and financial condition, capital adequacy, specific provisions and risk management practices. Readers are cautioned not to place undue reliance on these forward-looking statements. Meteoric does not undertake any obligation to publicly release the result of any revisions to these forward-looking statements to reflect events or circumstances after the date hereof to reflect the occurrence of unanticipated events. While due care has been used in the preparation of forecast information, actual results may vary in a materially positive or negative manner. Forecasts and hypothetical examples are subject to uncertainty and contingencies outside Meteoric's control. Past performance is not a reliable indication of future performance.

Competent person statement

The information in this announcement that relates to mineral resource estimates and exploration results is based on information reviewed, collated and fairly represented by Mr Peter Sheehan who is a member of the Australasian Institute Of Mining And Metallurgy and a consultant to Meteoric Resources NL. Mr Sheehan has sufficient experience relevant to the style of mineralisation and type of deposit under consideration, and to the activity which has been undertaken, to qualify as a competent person as defined in the 2012 edition of the Joint Ore Reserves Committee (JORC) Australasian code for reporting of exploration results, mineral resources and ore reserves. Mr Sheehan consents to the inclusion in this report of the matters based on this information in the form and context in which it appears.

CORPORATE OVERVIEW



Andrew Tunks Managing Director

Dr Tunks is a member of the Australian Institute of Geoscientist holding a B.Sc. (Hons.) from Monash and a Ph.D from the University of Tasmania. Dr Tunks has held numerous senior executive positions in a range of small to large resource companies including Auroch Minerals, A-Cap Resources, IAMGOLD Corporation and Abooso Goldfields. Andrew has previously been a Senior Lecturer in Economic Geology at UTAS specialising in the Geology and Formation of Mesothermal Gold Deposits

Patrick Burke Executive Chairman

Mr Burke holds a Bachelor of Law from the University of Western Australia. He has extensive legal and corporate advisory experience and over the last 15 years has acted as a Director for a large number of ASX, NASDAQ and AIM listed companies.

Shastri Ramnath Non-Executive Director

Throughout her 20 years in the exploration and mining industry, Ms Ramnath has gained extensive international experience, working on projects in Canada, the United States (Nevada), South America (Chile, Ecuador & Peru) and Africa (Guinea, Burkina Faso, Zambia, Namibia & South Africa). Shastri's experience includes working with Falconbridge Limited in Winnipeg - Manitoba, FNX Mining (now KGHM International) in Sudbury - Ontario, and as the President and Managing Director of Bridgeport Ventures (TSX listed junior exploration company).

Paul Kitto Technical Director

Dr Kitto has over thirty years' experience working within the mining industry, having served on a number of ASX Boards and having held senior level management positions around the world, including Australasia and Africa. Dr Kitto is currently Technical Director for ASX listed Tietto Minerals (ASX: TIE).



Capital Structure as at 1/09/2020

Market Cap @ \$A0.045	\$A55M
Shares on Issue	1.24B
Options on Issue	93.6M
Performance Rights	45.5M
Cash	\$A5.5M

Major Shareholder

Tolga Kumova 12%



GROWING FOOTPRINT AUSTRALIA – BRAZIL



PALM SPRINGS
GOLD PROJECT

WESTERN
AUSTRALIA

AUSTRALIA

Perth

Palm Springs – Halls Creek W.A
Historic Mine 50K oz Produced in 1990s
Classic Proterozoic Orogenic Gold
Drilling Commenced 24/08/2020



BRAZIL

JURUENA

MATO
GROSSO

Brasilia

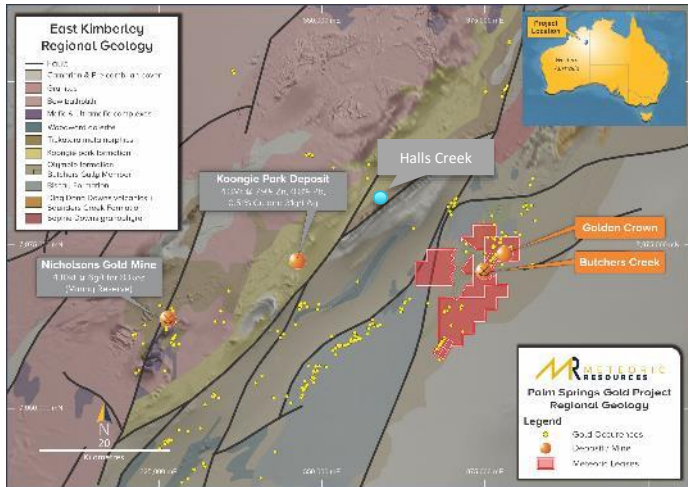


Juruena – Northern Mato Grosso
Garimpo production 1980s approx. 500k oz
Low sulfidation epithermal gold & Porphyry copper-gold
2020 Drilling Commenced 09/06/20

AUSTRALIA – PALM SPRINGS GOLD PROJECT



WA GOLD ACQUISITION – PALM SPRINGS GOLD PROJECT



Acquisition of 13 licences - 120km²

- Includes 3 MLs
- 60 Gold Prospects in Project
- 27km SW of Halls Creek WA

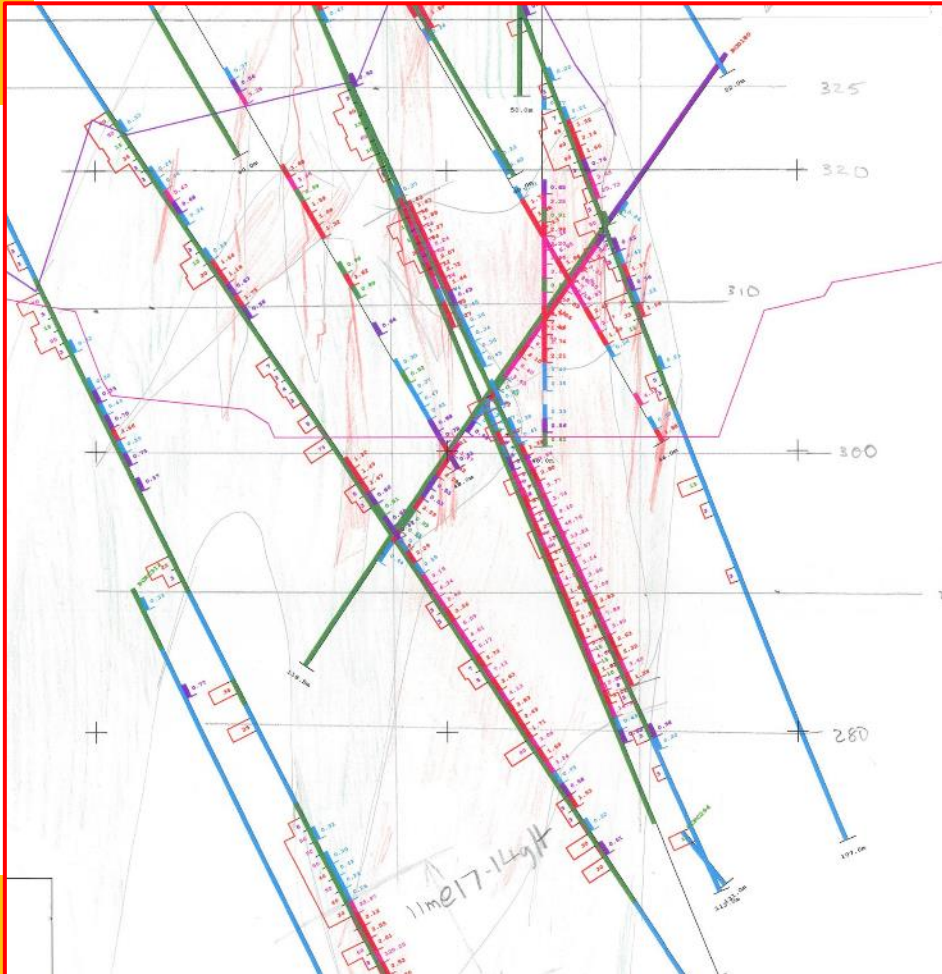
• Palm Spring Gold Project

Butchers Creek Open Cut –

- Operated 1995 – 1997
- 50,000 oz produced
- Ore in floor of pit
- No JORC 2012 Compliant Resources
- Golden Crown Inferred Mineral Resource
 - 323Kt @ 3.2 g/t Au for 28,000 oz of Au
(refer ASX: NST 14/12/2007)



HISTORIC DATA –X SECTION 10,100 mN



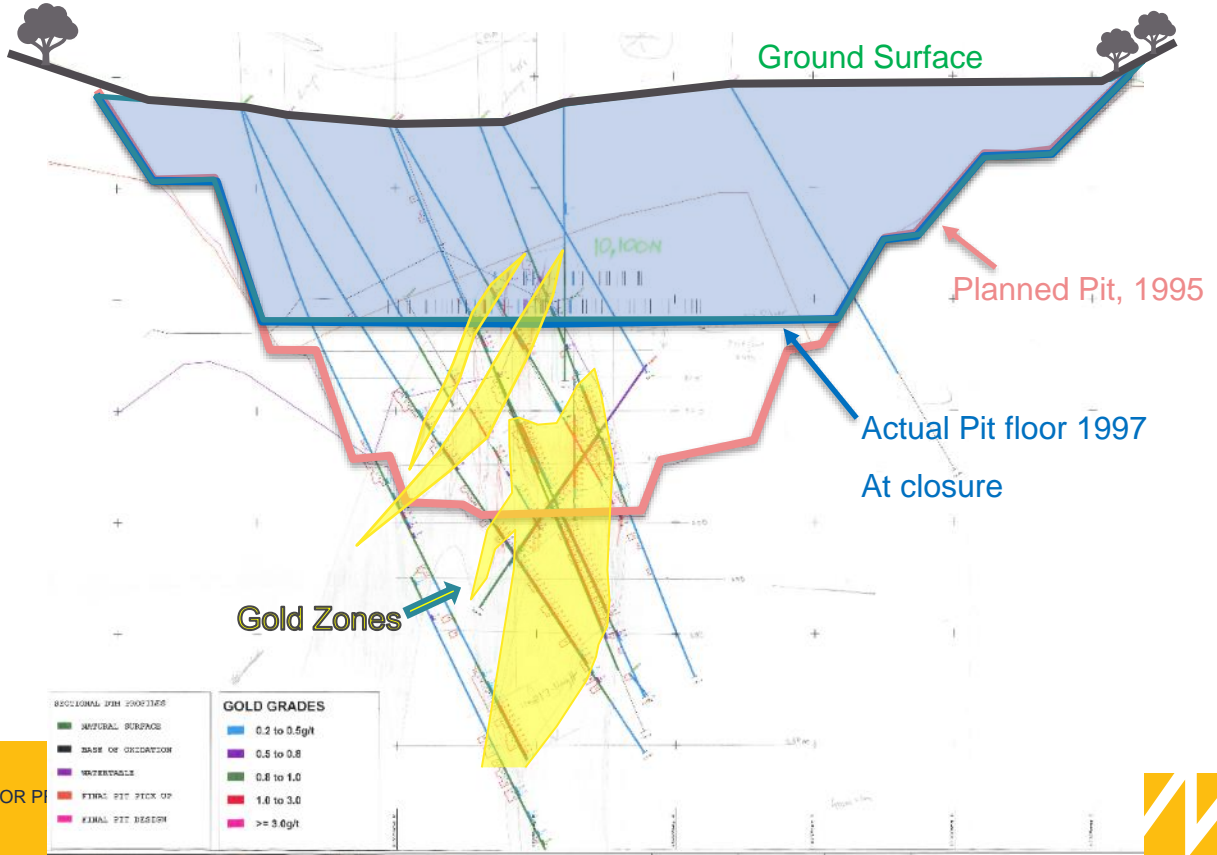
Historic Data Butchers Creek

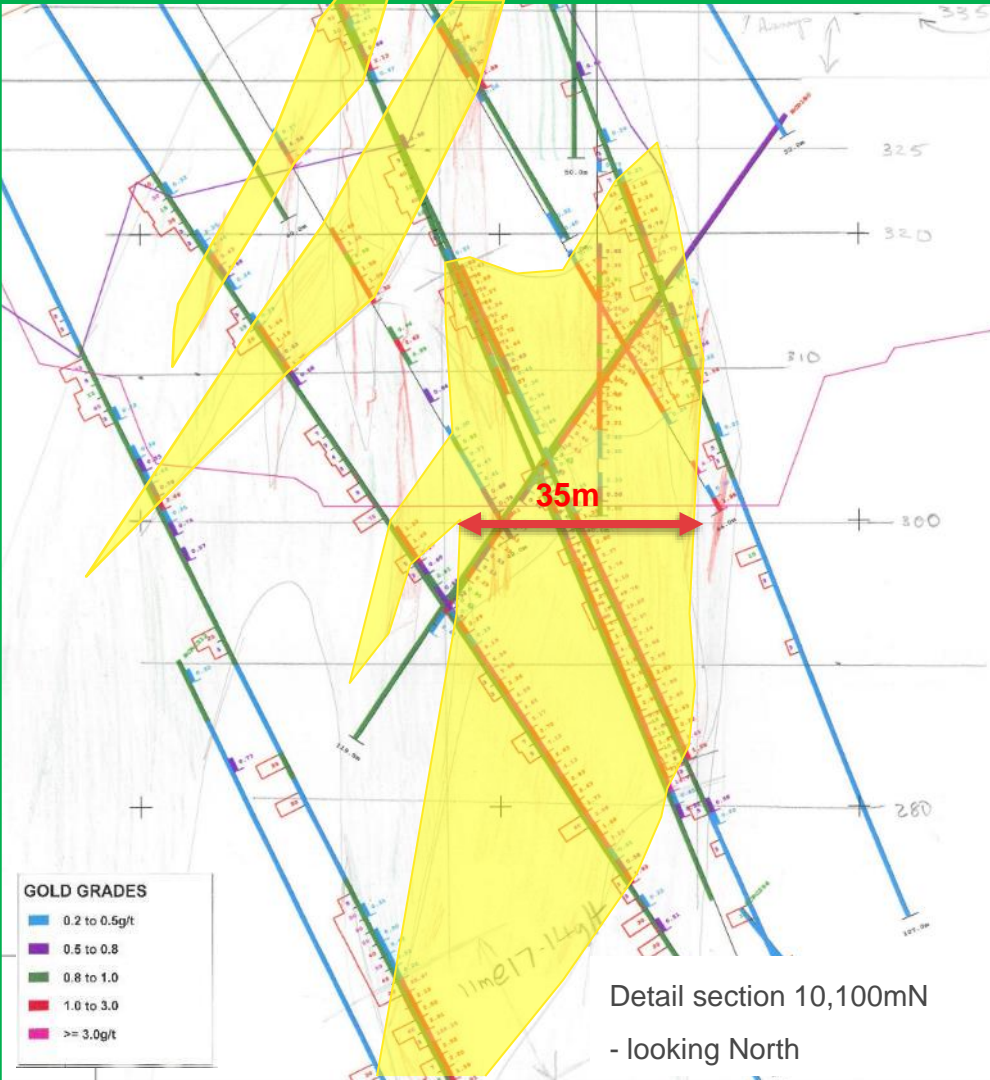
- NO COMPLETE DATABASE
- 65 A0 EW X-Sections
- Paper drill logs
- Digital Pit Design
- Final Pit Design
- Plant Specs
- Tailing Dam Specs



PALM SPRINGS GOLD PROJECT

HISTORIC DATA – X SECTION 10,100 MN

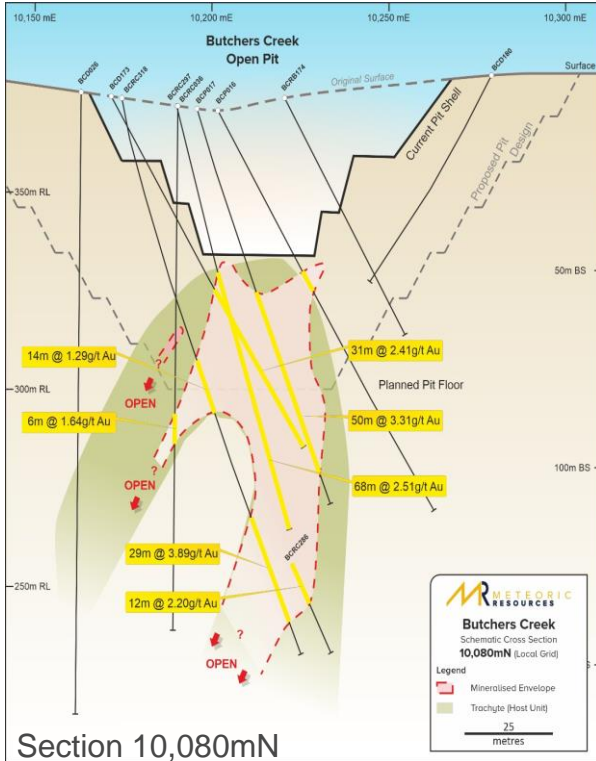




Detail section 10,100mN
- looking North

- Historical section 10,100mN
- Pencil workings from 1996
- Only drilling data we have
- Final Pit Survey - pit depth at 335m (top of this view)
- Amazing robust orebody beneath the floor of the abandoned pit – waiting to be RE-discovered!
- Drilling commenced 24th August 2020

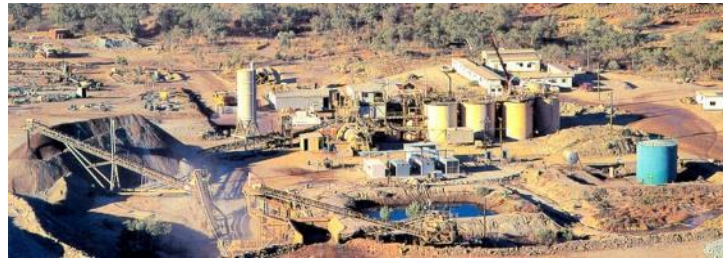
PALM SPRINGS GOLD PROJECT BUTCHERS CREEK



- Abundant ore remains in the floor of the southern end of Butchers Creek Pit
- The orebody is completely open at depth and down plunge to the south
- The entire prospect lies with granted Mining Leases from the early 1990s

ALSO

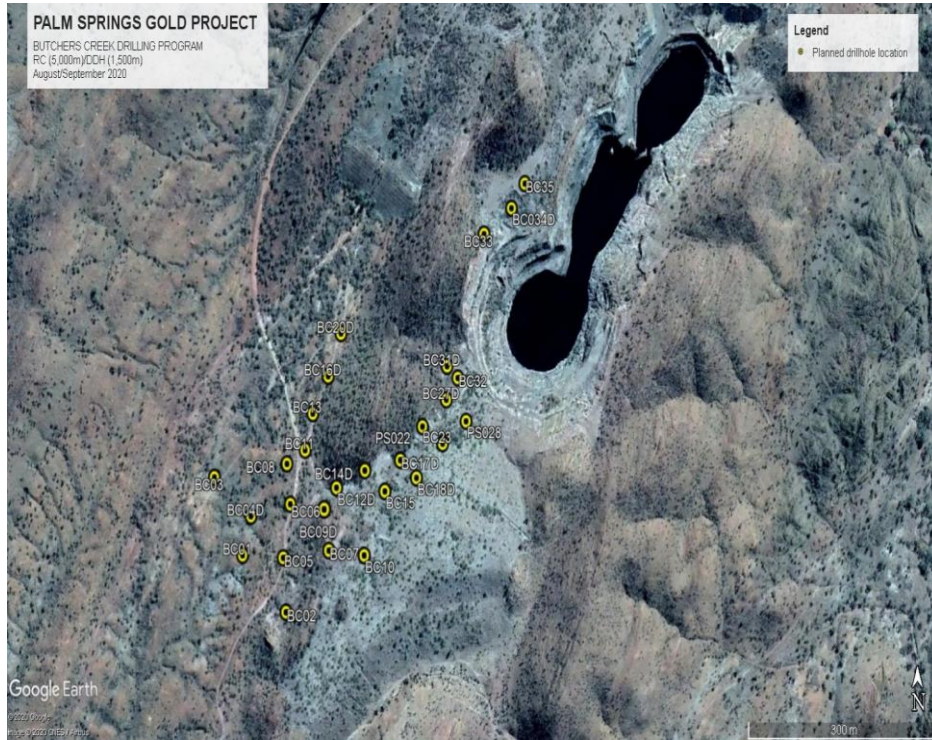
- 9Mt Tailings Dam remains with abundant capacity
- Excellent Metallurgy with > 90% recoveries
- 60 other gold occurrences across the new package



PALM SPRINGS GOLD PROJECT EXPLORATION PROGRAM

2020 Exploration Program

- 5,000m RC
- 1,500m Diamond
- Planning for Geophysics
- Construction of Regional Structural Interpretation
- Evaluation of untested historic anomalies





BRAZIL - JURUENA



BRAZIL – JURUENA HISTORY

- Juruena contains extensive artisanal workings- Recorded production in excess of 500,000oz gold



MEI completed an extensive 2019 drilling campaign with some spectacular results

- JUDD001 – 20.6m @ 94.5 g/t from 96m *including* 3.65m @ 505 g/t – Dona Maria
- JUDD007 – 3.5 @ 15.3 g/t from 124m – Dona Maria
- JUDD008 – 14m @ 81.7 g/t from 141m *including* 2.5m @ 287 g/t – Dona Maria
- JUDD010 – 51m @ 1.33 g/t @ 0.21 %Cu – Crentes
- JUDD013 – 4.8m @ 9.87 g/t from 88m – Tomate
- JUDD022 – 4.4m @ 13.5 g/t from 300m Dona Maria

JURUENA GOLD – JORC RESOURCE



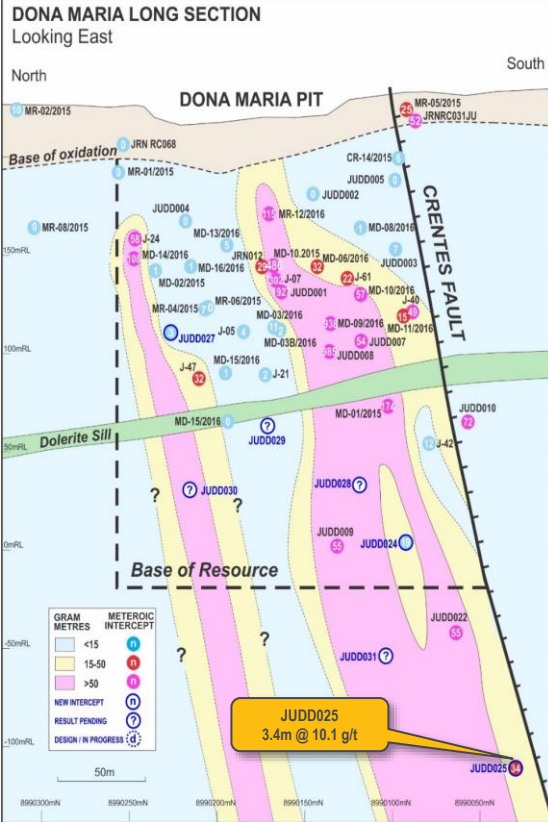
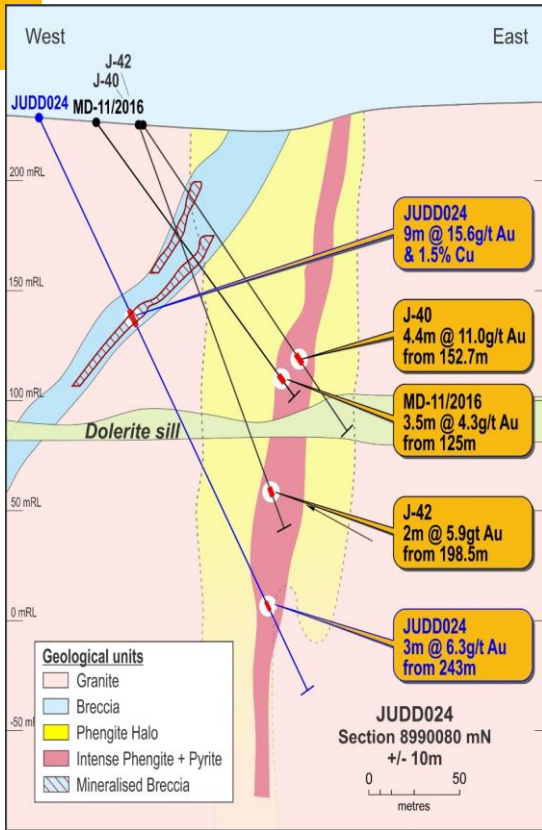
PROSPECT	CATEGORY	CUT OFF	Tonnes	Grade (g/t)	Oz Au
Donna Maria	Indicated	2.5 g/t	67,800	13.7	29,800
	Inferred		148,500	12.2	58,200
	<i>Sub-total</i>		216,300	12.7	88,000
Querosene	Indicated	2.5 g/t	31,200	28.4	28,500
	Inferred		188,700	14.7	89,300
	<i>Sub-total</i>		219,900	16.7	117,800
Total Indicated			99,000	18.3	58,300
Total Inferred			337,200	13.6	147,500
Total High-Grade			436,200	14.7	205,800
Crentes	Inferred	1.0 g/t	846,450	2.0	55,100
Global Resources			1,282,650	6.3	260,900



2016 Resource Compiled by Big River Gold Ltd (ASX:BRV)



DONA MARIA – 2020 DRILLING



- Moderate to steeply dipping orezones
- Average 1m to 4m true width
- Bonanza Grades controlled by fault intersections?
- Excellent Metallurgy with > 90% recoveries
- 2020 Program Extending Resource at Depth
- Drilling NOW
- Results to flow



SUMMARY



Currently drilling at **Juruena** – Latest results 31/08

9m @ 15.6 g/t Au and 1.5% Cu – JUDD024

3.4m @ 10.1 g/t Au – JUDD025



Drilling Commenced at **Palm Springs** 24th August

Results expected October

Meteoric

Over 10,000m of drilling across two continents

Generating strong exploration results

