



## Silver Swan North / East Sampson Dam - Exploration Update

### HIGHLIGHTS:

- Diamond drill rig secured for East Sampson Dam drill program (6 holes, ~600m) for further structural, geotechnical and metallurgical definition scheduled to begin week starting 21<sup>st</sup> September 2020
- Surface geochemical infill sampling program over majority of Silver Swan North totaling 2126 samples has been completed
- East Sampson Dam Exploration camp currently being established to facilitate continued resource development work

### NEXT STEPS:

- Phase 2 RC drilling for resource modelling (~40 RC holes; ~4,000m) – Q3/Q4 2020:
- Targeting further gold mineralisation north of ESD by aircore drilling of historic auger gold anomalies and geophysical targets – Q4 2020
- CSA review of downhole logging & diamond drill data to define structural controls on gold mineralisation – Q4 2020

*“Moho is pleased to advance to the next phase of drilling at East Sampson Dam in this challenging COVID environment. The Company is encouraged by recent excellent metallurgy and structural understanding from our Phase 1 program continuing to highlight the significant gold production potential of Moho’s East Sampson Dam prospect”*

- Mr Shane Sadleir, Moho Managing Director

#### CORPORATE DIRECTORY

NON EXECUTIVE CHAIRMAN  
Terry Streeter

MANAGING DIRECTOR  
Shane Sadleir

COMMERCIAL DIRECTOR  
Ralph Winter

NON EXECUTIVE DIRECTOR  
Adrian Larking

JOINT COMPANY SECRETARIES  
Ralph Winter / David McEntaggart

ASX: MOH

#### CORPORATE ADDRESS

L11/216 ST GEORGES TCE  
PERTH 6000

T +61 (08) 9481 0389  
+61 (08) 9463 6103

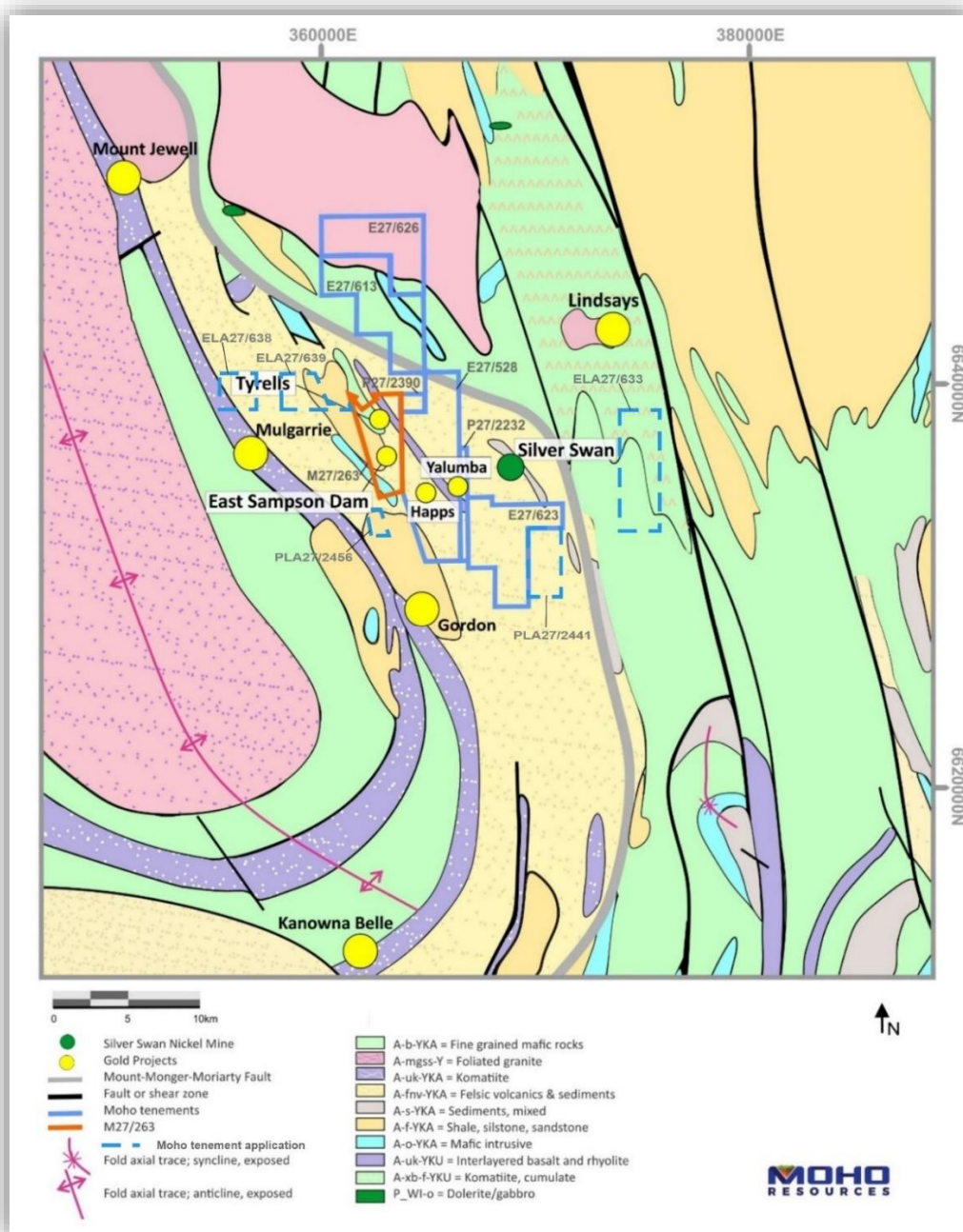
E [admin@mohoresources.com.au](mailto:admin@mohoresources.com.au)

W [www.mohoresources.com.au](http://www.mohoresources.com.au)

### East Sampson Dam - Diamond Drilling

Moho has secured a diamond drill (DD) rig which is due to start at the East Sampson Dam gold prospect (ESD) on the Silver Swan North project (Figure 1) during the week commencing 21 September. Six diamond holes for approximately 600 m of drilling will be completed as part of the next stage of resource infill drilling at ESD.

The Company aims to maximise the geological, structural, geotechnical and metallurgical information that can be obtained from the whole rock drill core of the ESD mineralisation. This information is critical as it will provide a solid foundation for underpinning and advancing the resource studies at ESD.

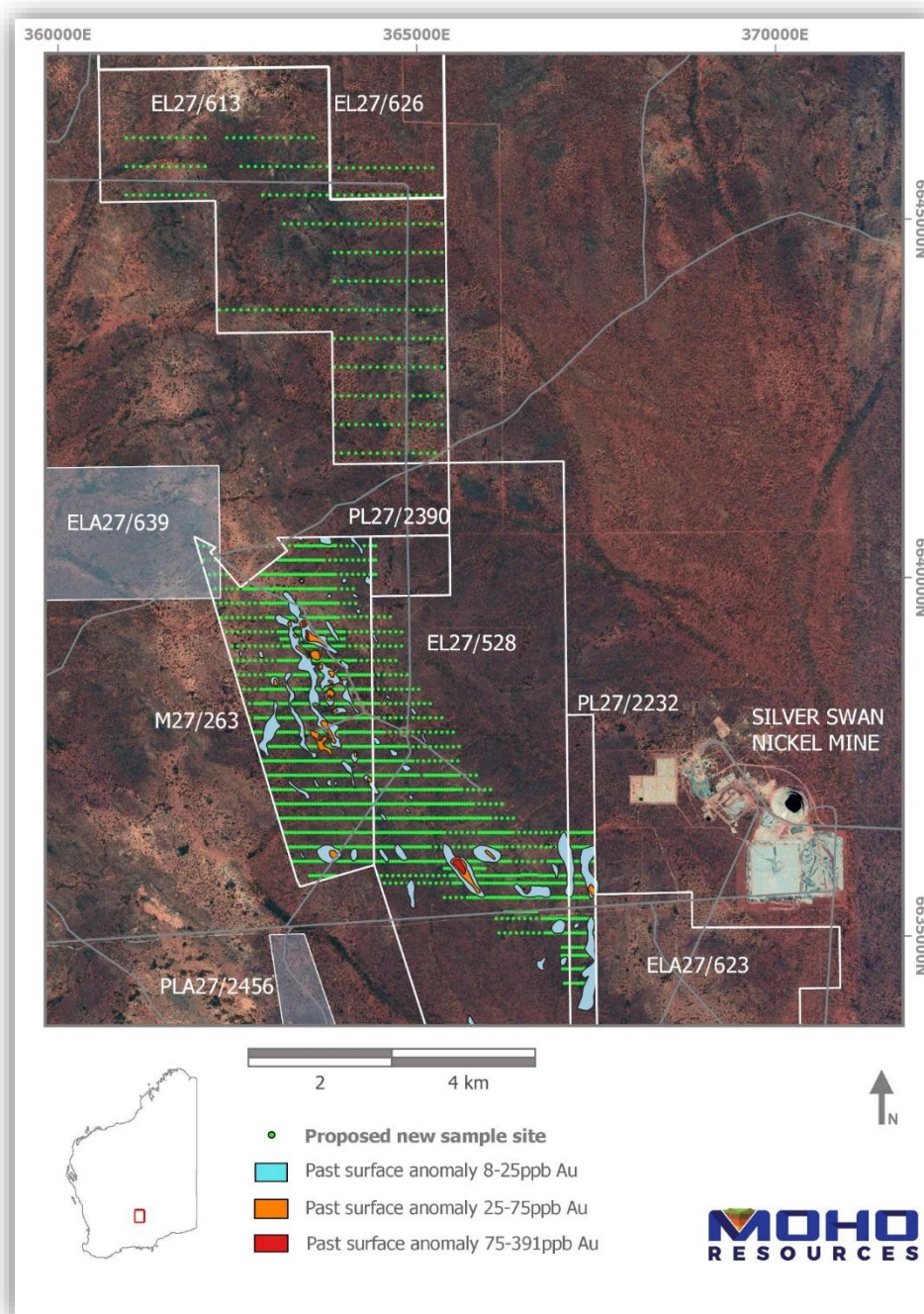


**Figure 1: Location of Moho's tenements, including M27/263 (highlighted) in relation to regional geology of Silver Swan North Project**

## Surface Geochemical Sampling

Moho engaged a geochemical sampling contractor to conduct infill surface sampling at the Silver Swan North project (Figure 2) to infill historical work undertaken in 2004. This work covered all of M27/263 on a 100m x 40m sample grid; 200m x 40m grid over sections of E27/528, P27/2232 and P27/2390 and 400m x 100m grid over the majority of E27/613.

A total of 2126 samples (includes duplicates and standards) were collected from approximately 30 cm below surface. These were submitted to Bureau Veritas, Perth for gold and about 500 multi-element analyses over areas considered to be prospective for nickel.



**Figure 2: Location of surface geochemical sampling, Silver Swan North project**



### **Exploration Camp Infrastructure**

The Company has secured a transportable accommodation unit and office caravan in order to establish a field office at the Silver Swan North project. These amenities will facilitate continued resource development work at the East Sampson Dam gold prospect, as it progresses through resource drilling and mining studies towards potential mine development. They will also provide vital support to the ongoing regional exploration across all the tenements at the Silver Swan North project.

### **NEXT STEPS**

- Phase 2 RC drill program (~40 RC holes; ~4,000m) – Q3/Q4 2020
- Review new surface geochemistry data prior to aircore drilling of auger gold anomalies and geophysical targets within M27/263 – Q4 2020
- CSA review of downhole logging & DDH data to improve understanding of structural controls on gold mineralisation– Q4 2020

### **MOHO'S INTEREST IN SILVER SWAN NORTH TENEMENTS**

Moho is the 100% registered owner of granted tenements M27/263, E27/528, E27/626, P27/2232, P27/2390 & E27/613 and applications for E27/623, E27/633, E27/638, E27/639, P27/2441, & P27/2456 all of which comprise the Silver Swan North Project

## ABOUT MOHO RESOURCES LTD



**MAP OF MOHO's PROJECT AREAS**

Moho Resources Ltd is an Australian mining company which listed on the ASX in November 2018. The Company is focused on gold and nickel exploration at Empress Springs, Silver Swan North and Burracoppin.

Moho's Board is chaired by Mr Terry Streeter, a well-known and highly successful West Australian businessman with extensive experience in funding and overseeing exploration and mining companies, including Jubilee Mines NL, Western Areas NL and Midas Resources Ltd.

Moho has a strong and experienced Board lead by geoscientist Shane Sadleir as Managing Director, Commercial Director Ralph Winter and Adrian Larking, lawyer and geologist, as Non-Executive Director.

Highly experienced geologists Bob Affleck (Exploration Manager) and Max Nind (Principal Geologist) are supported by leading industry consultant geophysicist Kim Frankcombe (ExploreGeo Pty Ltd) and experienced consultant geochemists Richard Carver (GCXplore Pty Ltd) and Dr Carl Brauhart (CSA Global Pty Ltd).

Moho's geophysical programs and processing and analysis of the results are supervised by Kim Frankcombe (ExploreGeo Pty Ltd) who is a geologist and geophysicist with 40 years' experience in mineral exploration. He has worked for major mining companies, service companies and for over 20 years as an independent geophysical consultant. He was a member of the discovery team for several significant deposits including one Tier 1 deposit. He manages the ExploreGeo consulting group which provides specialist geophysical advice to explorers.

Dr Jon Hronsky (OA) provides high level strategic and technical advice to Moho. Jon has more than thirty years of experience in the global mineral exploration industry, primarily focused on project generation, technical innovation and exploration strategy development. He has worked across a diverse range of commodities and geographies, and has particular expertise in targeting nickel sulphide and gold deposits.

## ENDS

The Board of Directors of Moho Resources Ltd authorised this announcement to be given to ASX.

### For further information please contact:

Shane Sadleir, Managing Director  
T: +61 411 704 498  
E: [shane@mohoresources.com.au](mailto:shane@mohoresources.com.au)

Ralph Winter, Commercial Director  
T: +61 435 336 538  
E: [ralph@mohoresources.com.au](mailto:ralph@mohoresources.com.au)