

# impact.

MINERALS



**Exploring for Major Discoveries in  
World Class Terranes**



**Persistence is the key**

**Provided you are in the  
right area!**



# 2020 Vision: Focus on Greenfields Exploration in Two Major Belts

## 1. Broken Hill, New South Wales (IPT 100%)

- Home to the giant **Broken Hill** silver-lead-zinc deposit (>300 Mt)
- Large strategic ground holding of **815 sq km. Drilling in progress.**
- Highest platinum group metal (PGM) grades in Australia discovered by Impact:
- Potential for **major nickel-copper-PGM** mining camp over a 40 km belt.

**815 sq km**

Large strategic ground holding

## 2. Commonwealth, NSW (IPT: 100%)

- Large strategic ground holding of **902 sq km** close to recent **Boda** discovery and large copper-gold deposits of the Lachlan Fold Belt.
- Potential for giant copper-gold deposits like Cadia (>40 Moz Au, >10 Mt Cu) and VMS deposits like Eskay Creek (4 million oz Au, 180 million oz Ag)
- Numerous targets and follow up drilling required including at the Commonwealth resource

**902 sq km**

Large strategic ground holding

## 3. Other Projects (IPT 100%)

- **Arkun, WA:** Large strategic ground holding of 2,000 sq km in the emerging Ni-Cu-PGE Province. Surrounded by Anglo American Corporation.
- **Blackridge, QLD:** 150 sq km covering majority >300,000 ounce gold field.

**Other Strategic Holdings**

# Introducing Impact Minerals (ASX: IPT)

## Capital Structure

Listed on ASX	November 2006
Shares on Issue	1,777 million
Options	172.5M unlisted Executive
Share Price	2.8 c
Market Cap	\$50 million
Cash	\$5.0 million

**2 year**  
Share price



## Shareholders

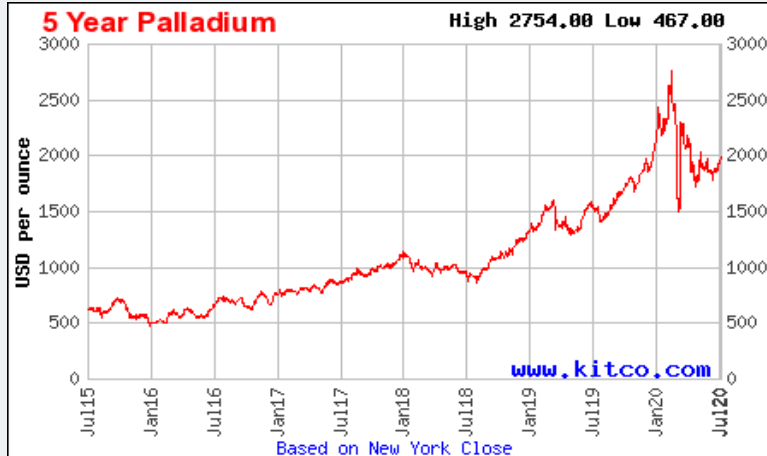
Bunnenberg Family	11%
ABC Beteiligungen	12%
Directors	3%
Top 20	43%
Top 50	52%
No of Shareholders	3,500

Major exploration boom in progress driven by gold and PGM's

# Broken Hill Project, PGM-Nickel-Copper, New South Wales

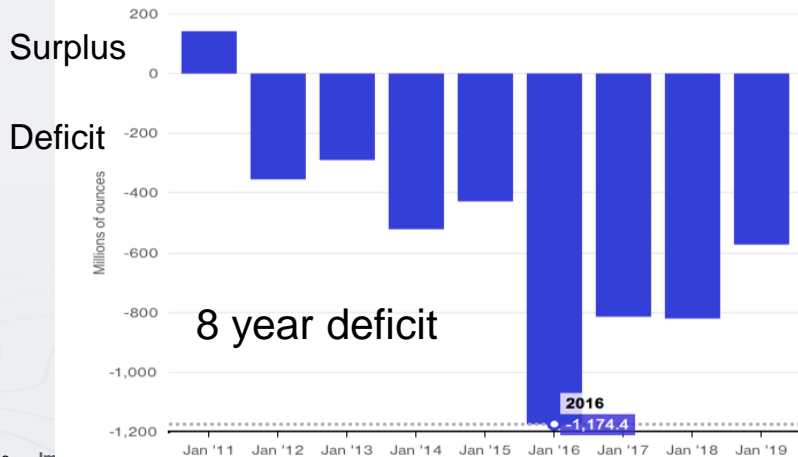


# Record Palladium (and Rhodium) Prices: 8 years of deficit



85% used in exhaust systems.  
 Increased demand in hybrid vehicles (where are the EV's?).  
 Supply not increasing to meet demand as it is mostly a by product of platinum mining which has struggled.

Mined mostly in South Africa and Russia

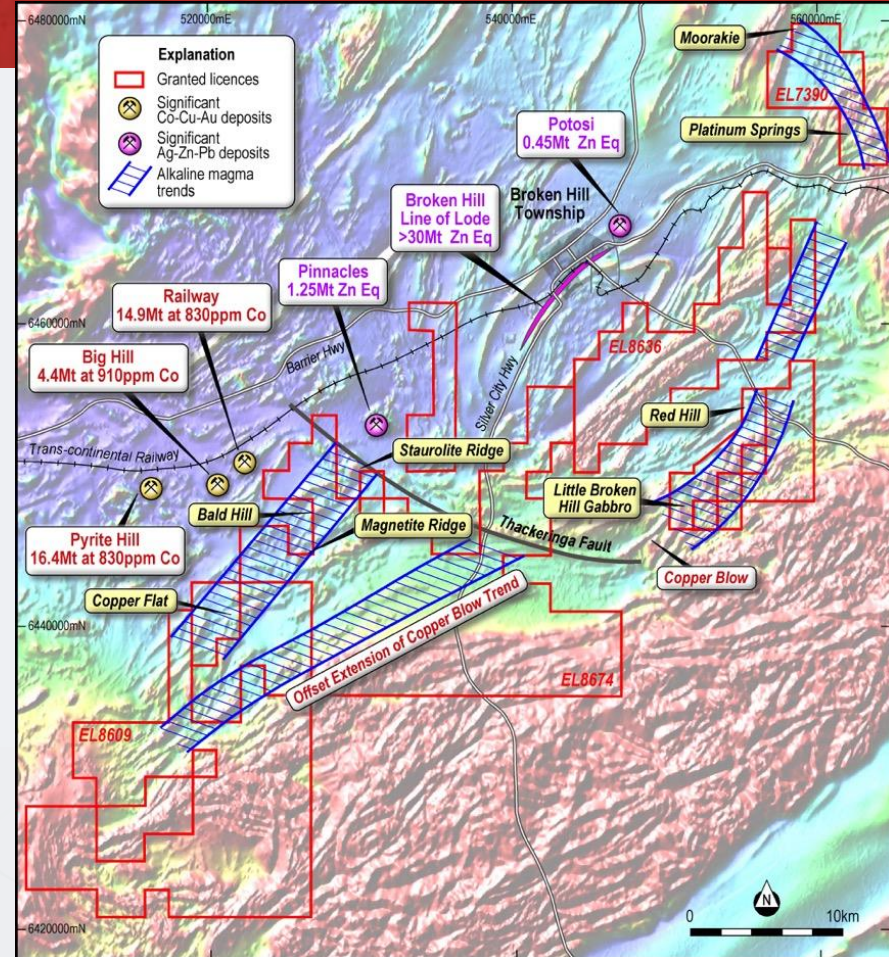


**Rhodium**  
 US\$11,000/oz

# Broken Hill Project Overview

1. Major land position of 815 sq km in one of Australia's most prolific mining belts
2. Highest drill hole PGM grades in Australia including rare PGM's Rh, Os, Ru and Ir.
3. Multiple targets for nickel-copper-PGM deposits
4. Potential for million ounce PGM discovery
5. Significant zinc-lead-silver potential

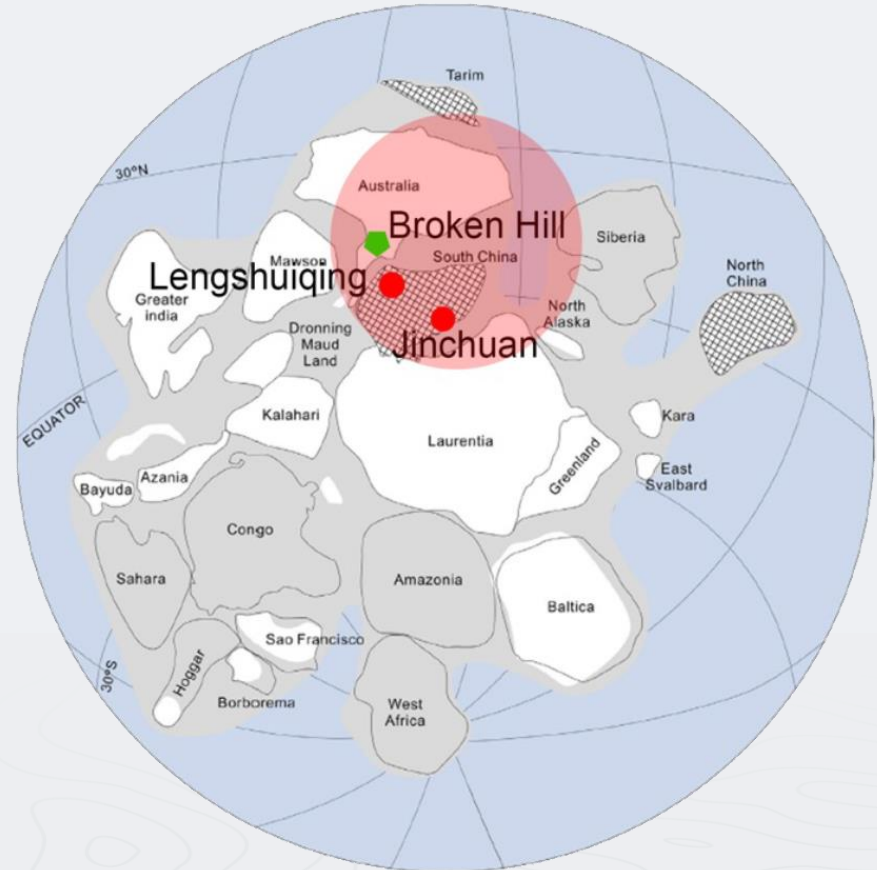
**Highest  
PGM  
grades in  
Australia**



# A new geodynamic setting for Broken Hill at c.800Ma

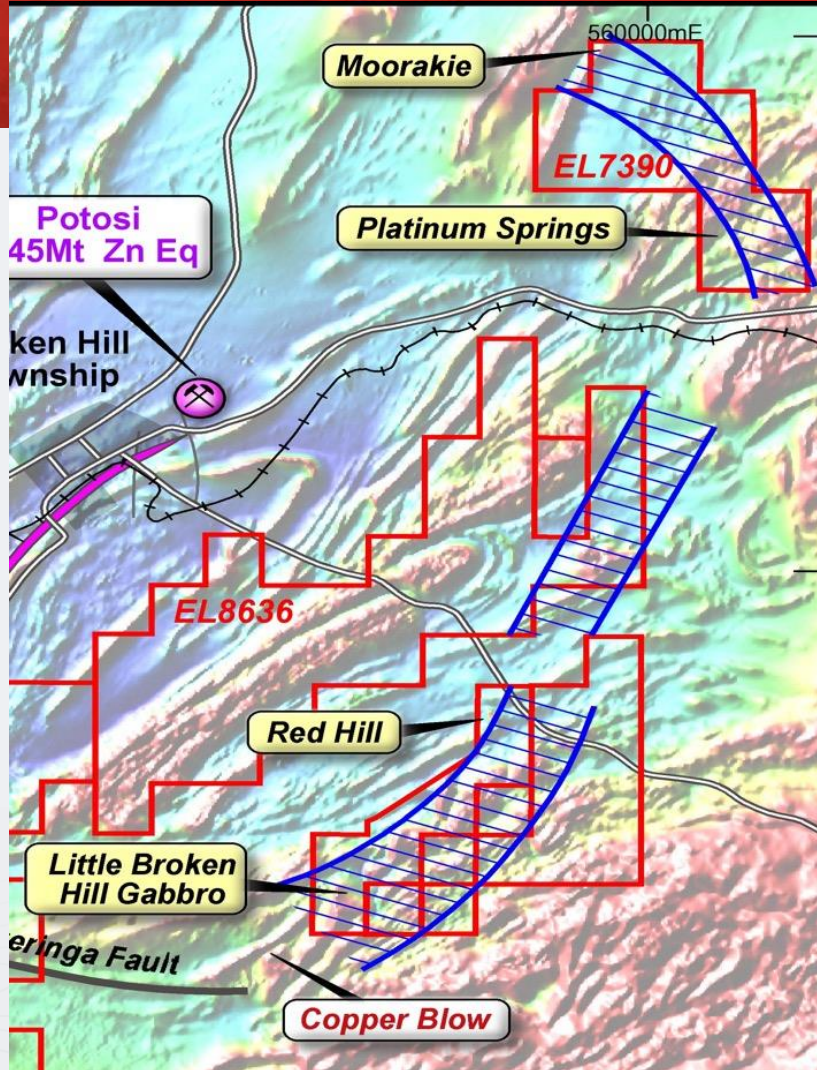
- Nickel-copper-PGE bearing intrusions related to the break up of the supercontinent Rodinia about 800 million years ago.
- Break up is related to a mantle plume head (red circle) responsible for the breakup of Rodinia which formed the Jinchuan and Lengshuiqing Ni-Cu-Co-PGM deposits.
- Broken Hill was located in the same region at the time and so has the geological setting to host major Ni-Cu-PGM deposits.

**Jinchuan: >500Mt at 1.2% Ni 0.7% Cu 0.4 g/t PGM**





## Four Priority Prospects



- High grade palladium and platinum
- Widespread rare high grade platinum group metals: Os, Ir, Ru, Rh
- **Red Hill:** Impact discovery of very high grade PGE's.
- **Platinum Springs:** high grade magmatic nickel-copper-PGE sulphide.
- **Rockwell-Little Broken Hill Trend:** poorly explored intrusion similar to Jinchuan and Voiseys Bay.
- **Moorkai:** High grade rock chip samples over 9 km trend

Drilling in  
progress

# High Grade Indeed! – RHD012



**1.2 metres at**

**4.6 g/t rhodium, 7.2 g/t iridium, 5.6 g/t osmium and 3.1 g/t ruthenium  
10.4 g/t platinum, 10.9 g/t gold, 294 g/t (9.5 ounces) palladium  
(335.8 g/t (10.8 ounces) 6PGE+gold)  
7.4% nickel, 1.8% copper and 19 g/t silver<sup>1</sup>**

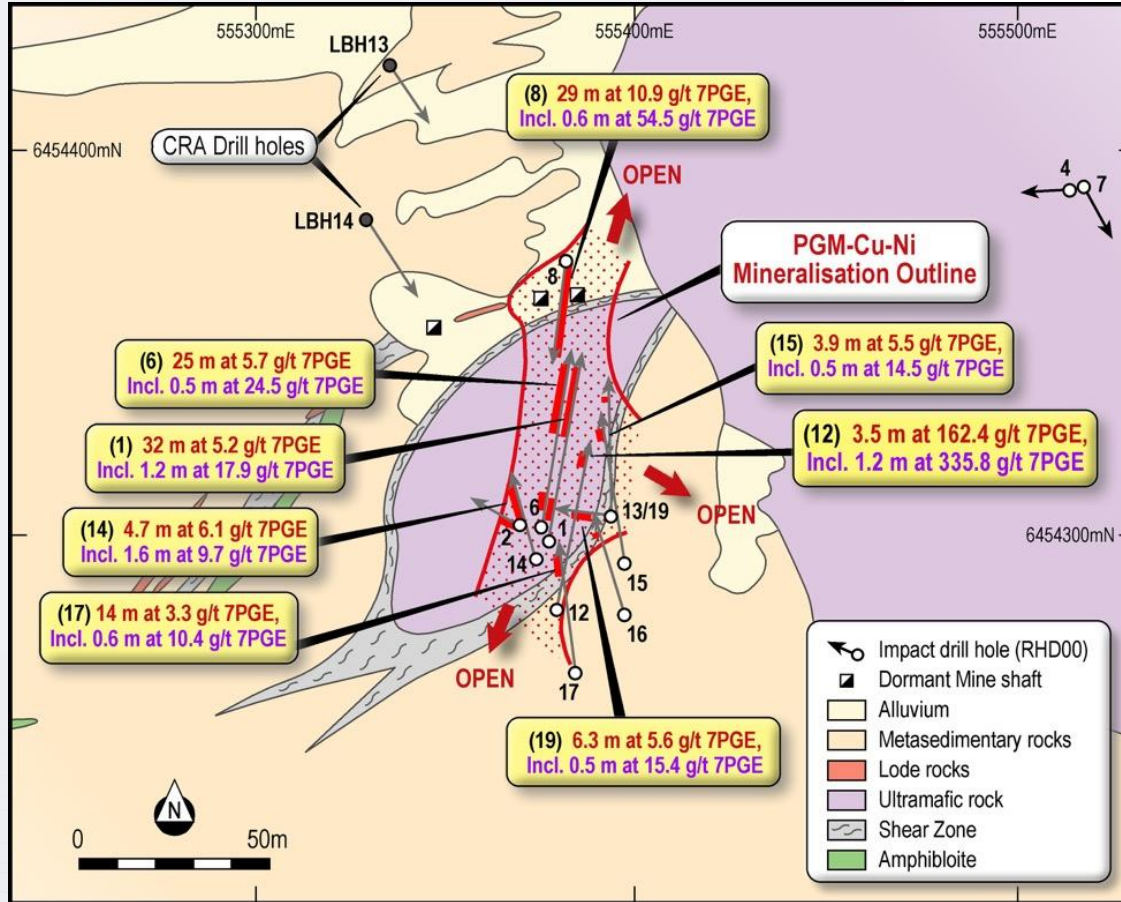
**10 ounces  
of  
Palladium**

***Within a thicker intercept of 3.5 metres at***

**1.7 g/t rhodium, 2.6 g/t iridium, 2.0 g/t osmium and 1.1 g/t ruthenium  
5 g/t platinum, 6 g/t gold, 144 g/t (4.6 ounces) palladium  
(159 g/t (5.3 ounces) 6PGE+gold)  
2.9% nickel, 2.3% copper and 14.5 g/t silver**

<sup>1</sup> ASX Releases 23 & 26 October 2015

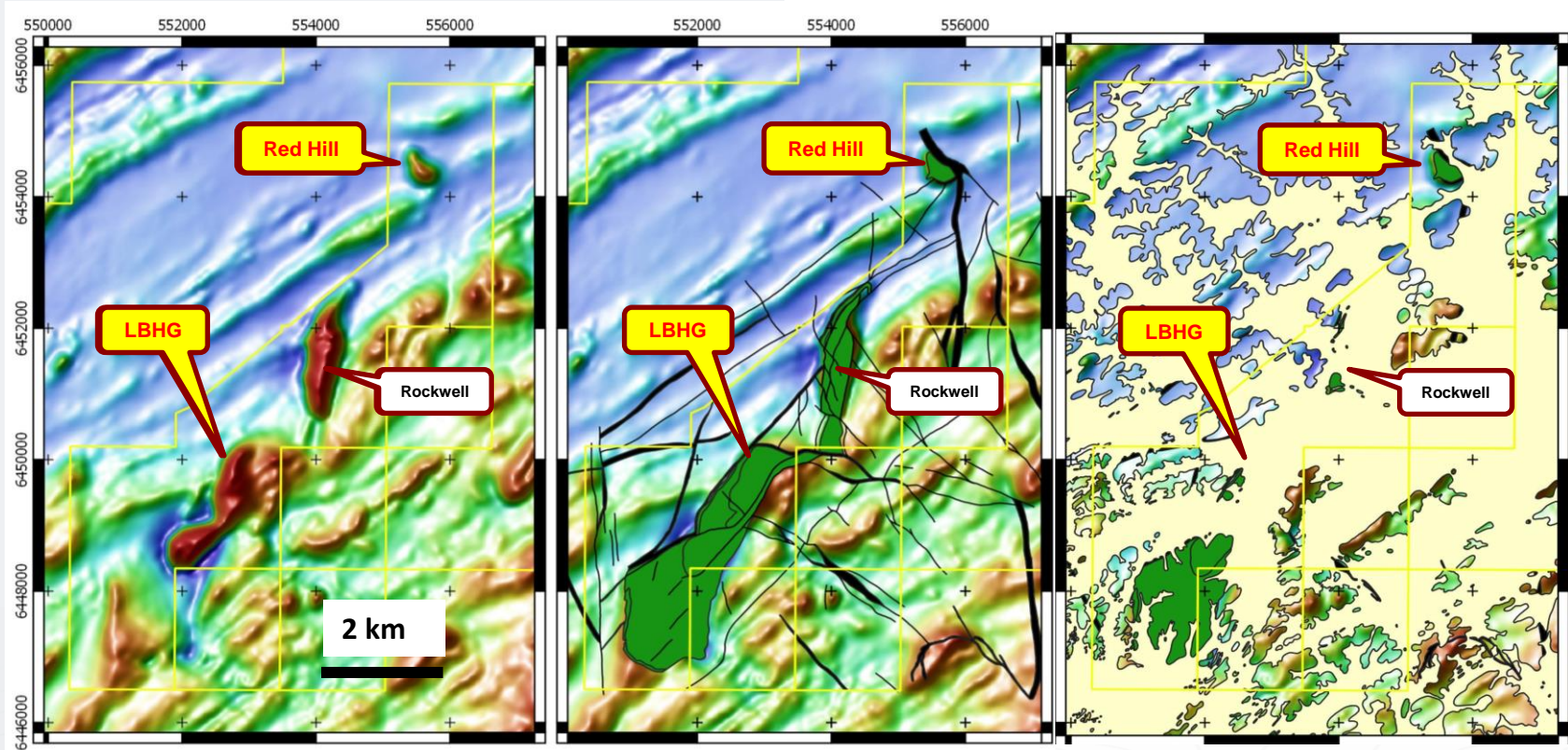
# Red Hill Prospect: 12/13 drill holes returned mineralisation



Drill programme to test open extensions down dip and along trend to the north and south.

Testing depth extensions

# Little Broken Hill: 6 km long intrusion with 1 drill hole >25m

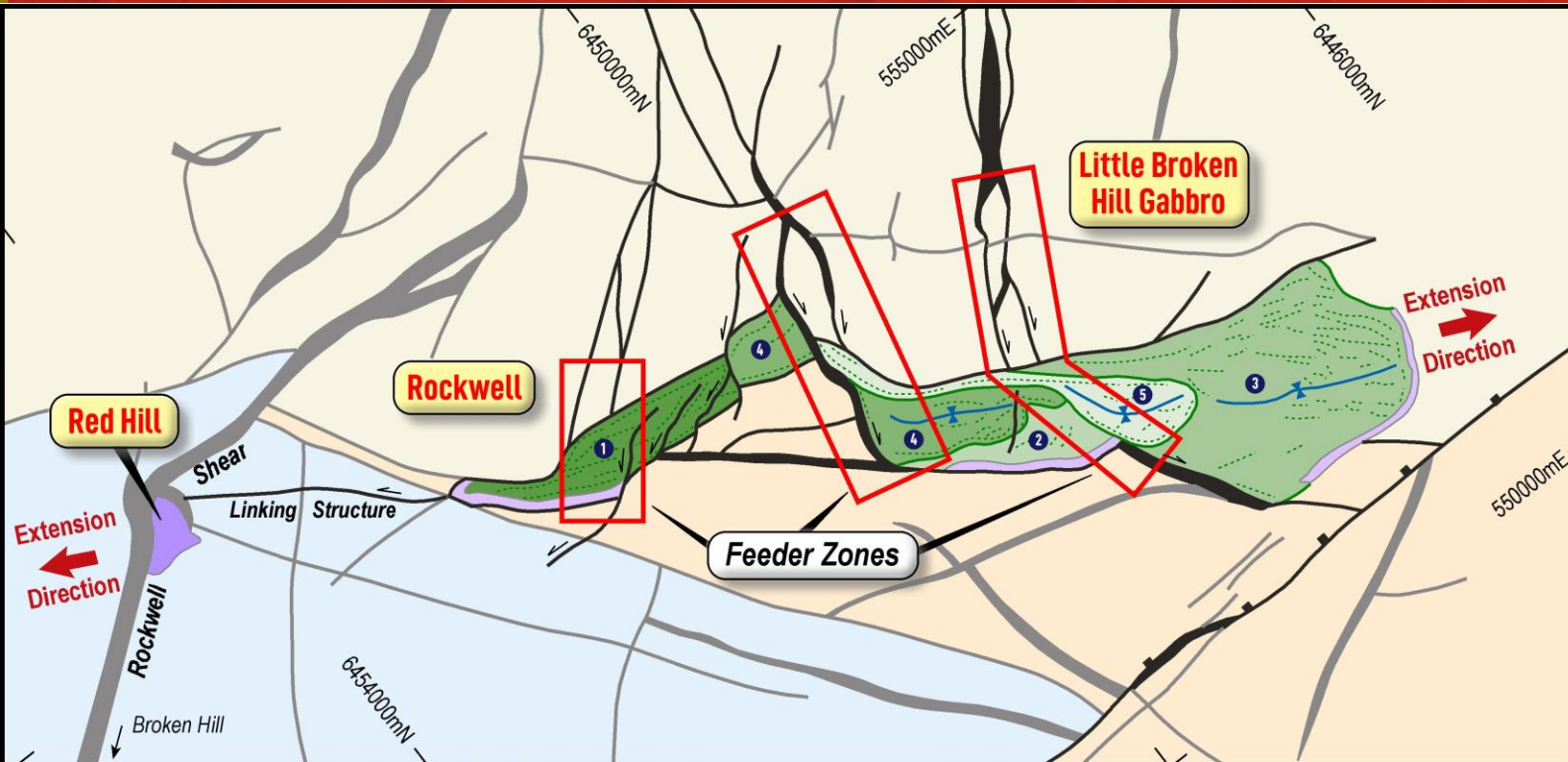


Magnetic Data

Extent of Gabbro

Extent of Cover

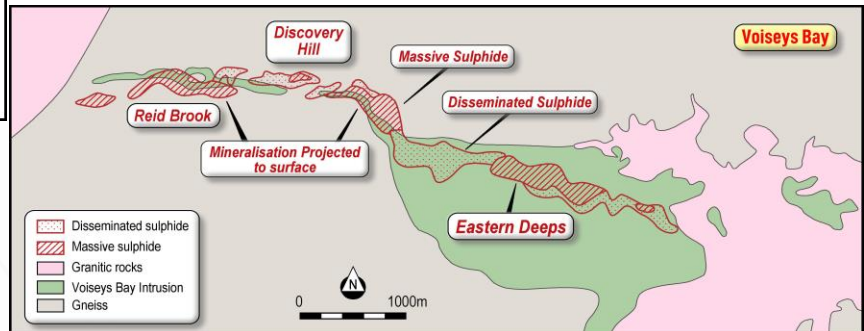
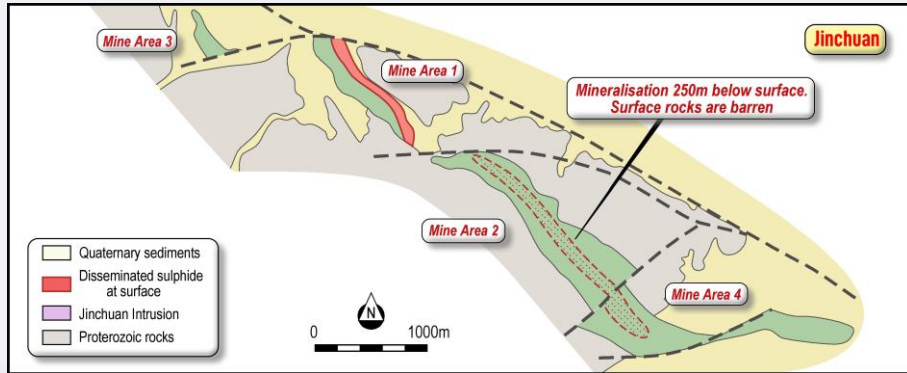
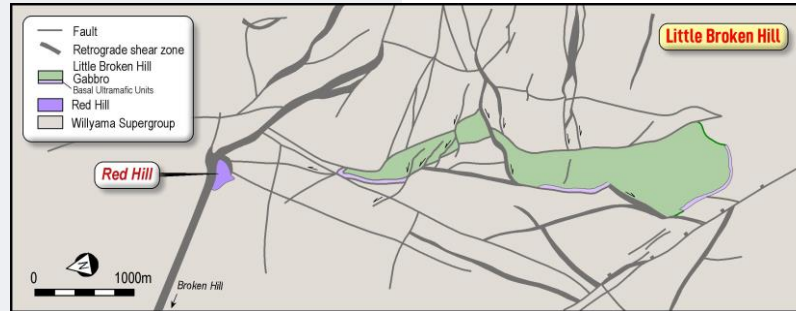
# Little Broken Hill: Priority Feeder Zone Targets identified



Feeder zones under cover

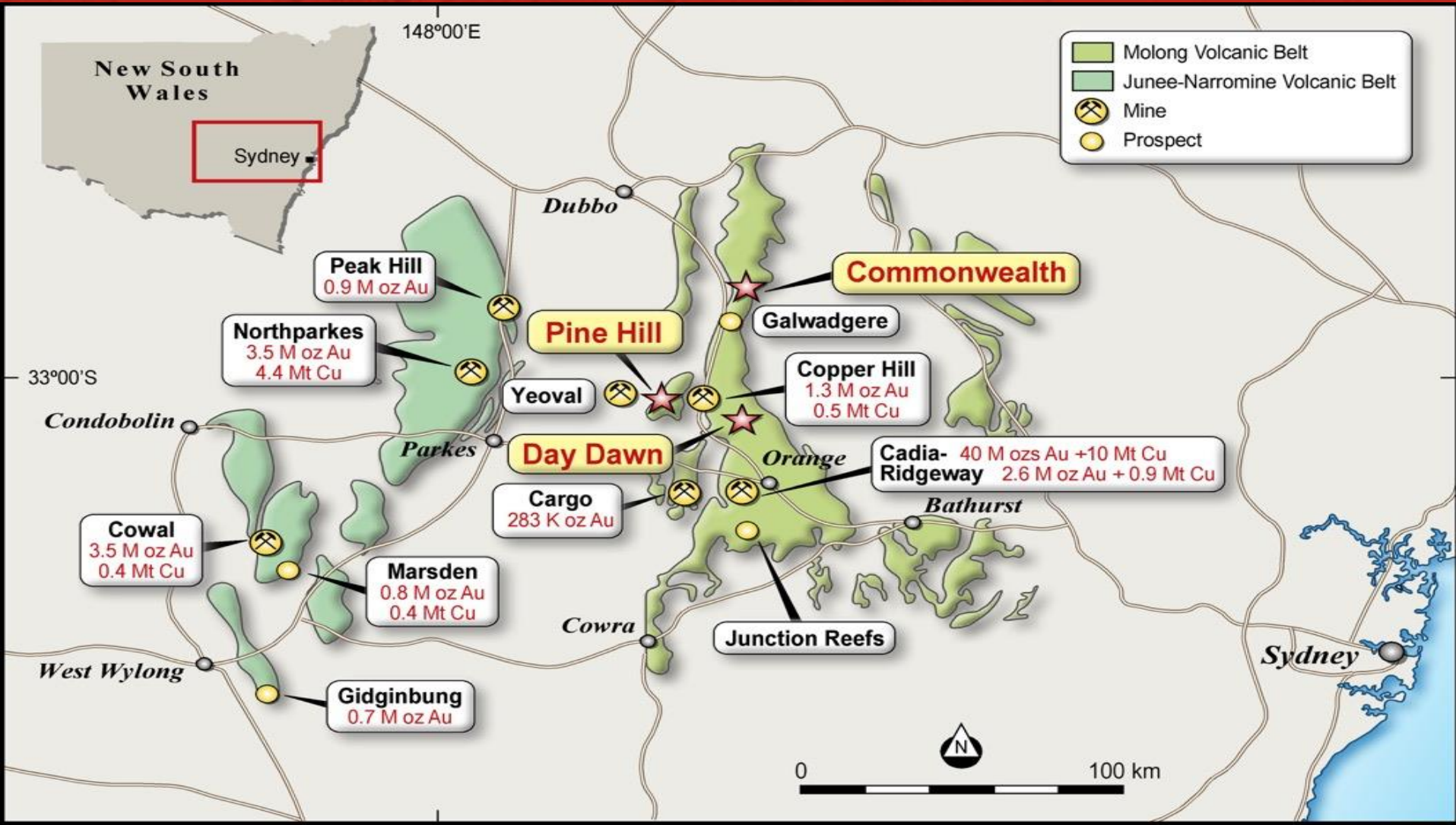
<ul style="list-style-type: none"> <li> Magnetic trend</li> <li> Fold - syncline</li> <li> Extensional fault with movement direction</li> <li> Fault (black - feeder structure)</li> <li> Retrograde shear zone (black - feeder zone)</li> </ul>	<ul style="list-style-type: none"> <li> ~820Ma</li> <li> Little Broken Hill Gabbro</li> <li> Basal Ultramafic Units</li> <li></li> <li></li> <li> Red Hill</li> </ul>	<ul style="list-style-type: none"> <li> ~1,650Ma</li> <li><b>Willyama Supergroup</b></li> <li> Metasedimentary sequence</li> <li> Felsic sequence</li> <li> Broken Hill sequence</li> </ul>	 
--	---	---	------

# Little Broken Hill: Similar size to Jinchuan and Voiseys Bay

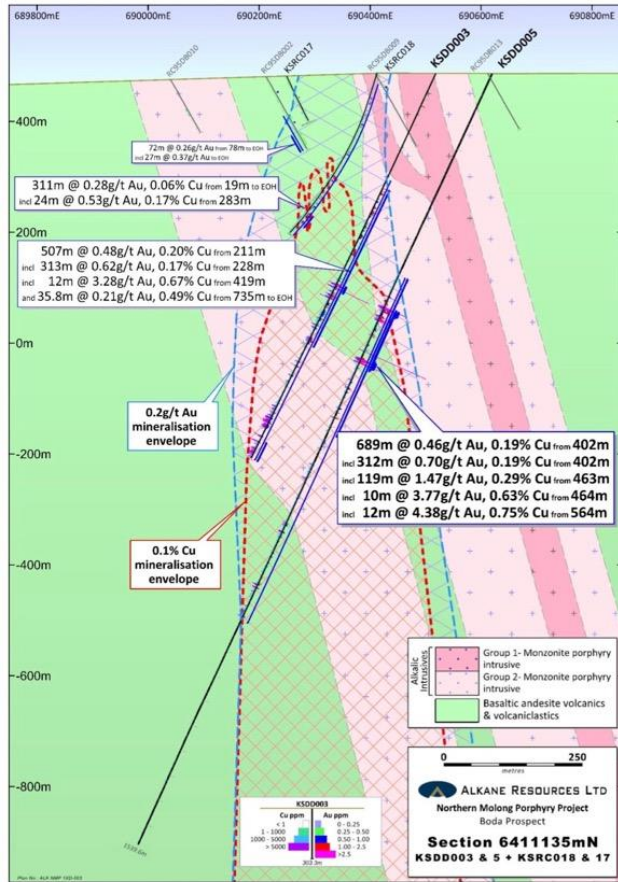


✓ Ticks all the boxes

# Commonwealth Project, Lachlan Fold Belt, NSW

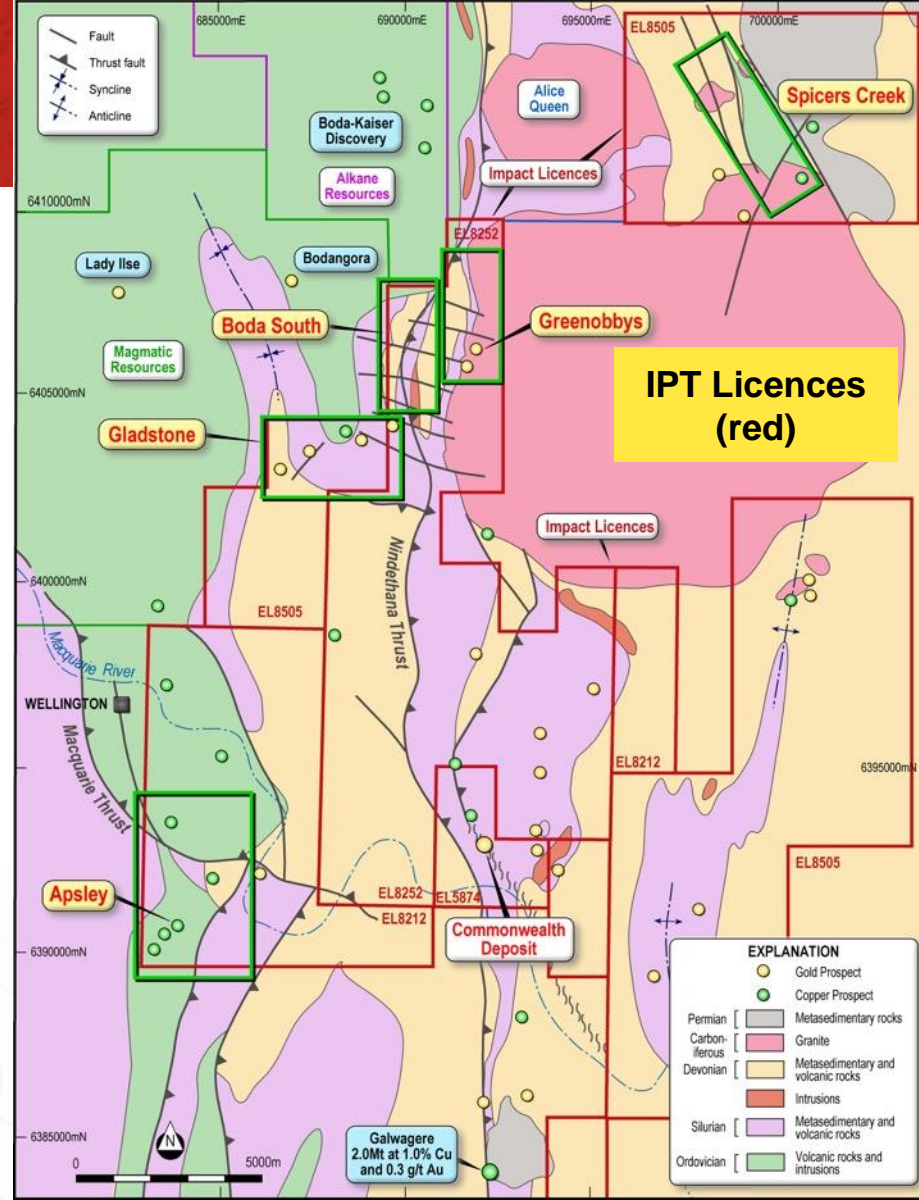


# Boda Porphyry Cu-Au Discovery: No porphyry. Yet.



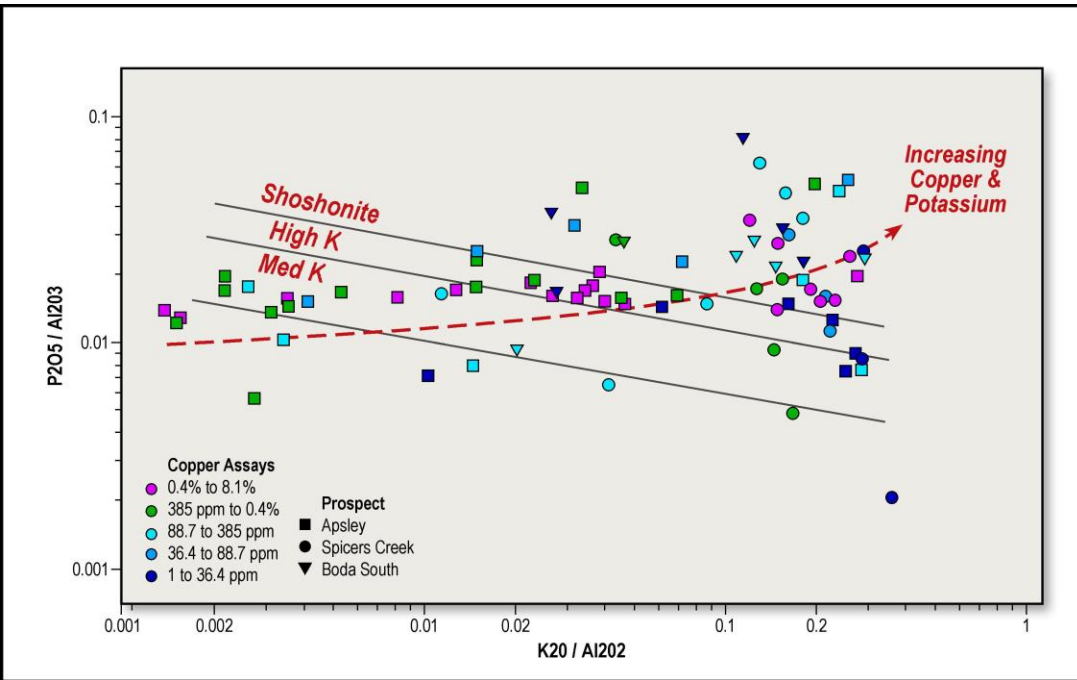
50 years to discovery at Boda!

Five priority prospects



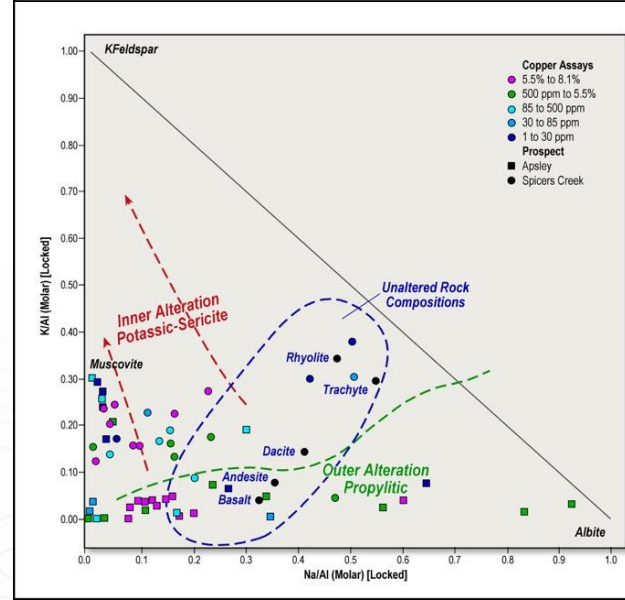
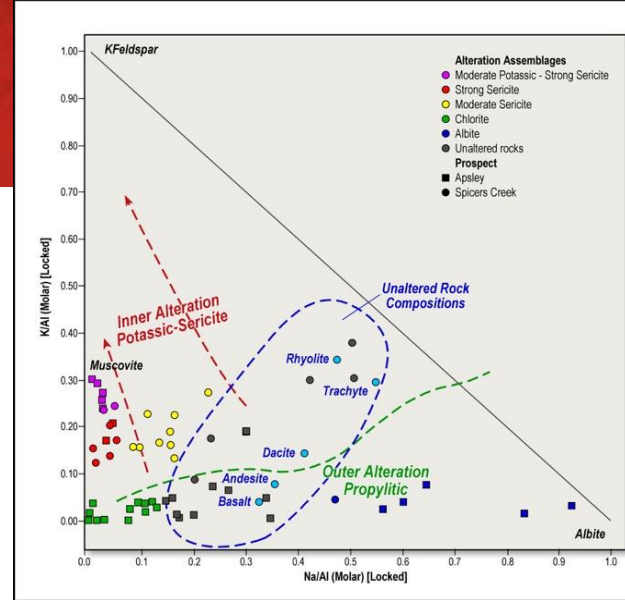


# Correct rocks and alteration for a porphyry discovery at three prospects

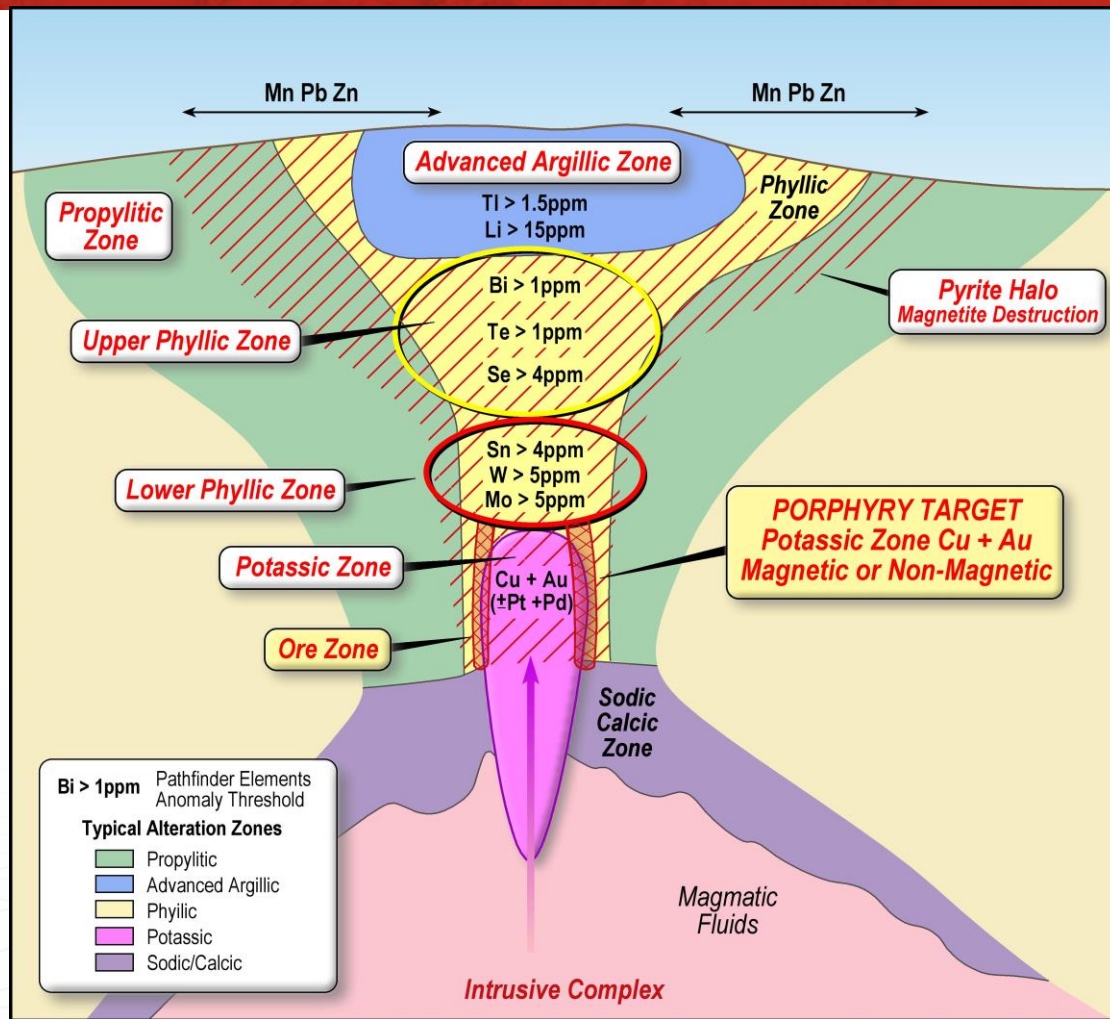


Shoshonite volcanics associated with increasing copper (Cadia and Boda)

Increasing copper grades as alteration becomes more proximal

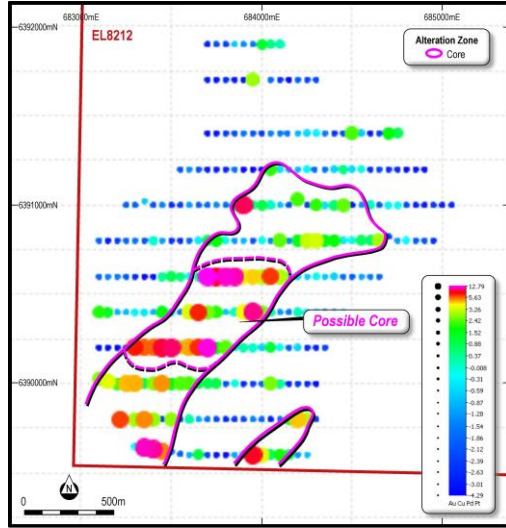


# Text Book Cross Section Through a Porphyry Copper-Gold Deposit

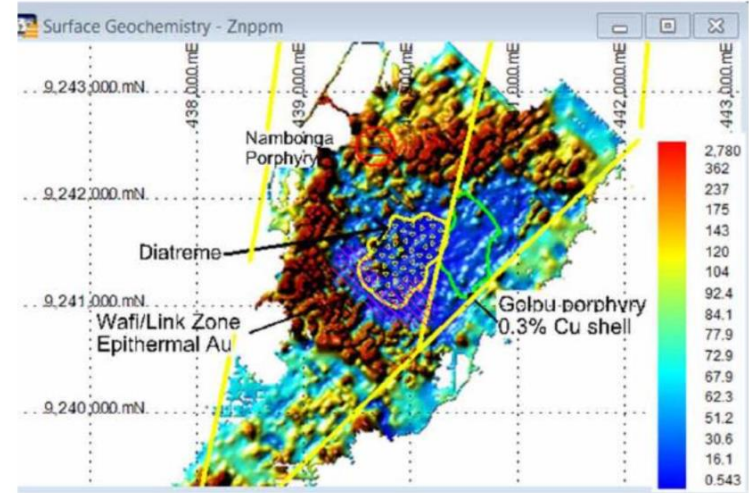
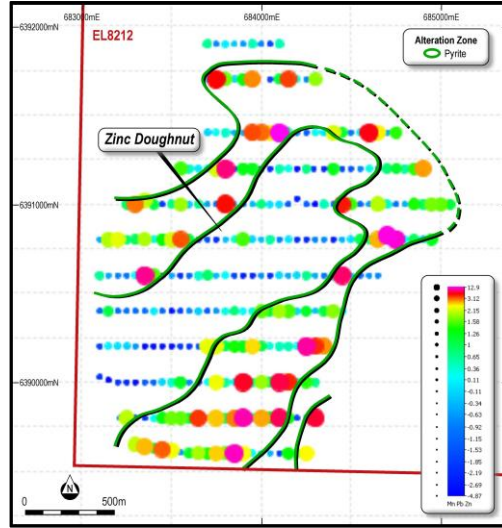


# Zinc doughnuts at Apsley

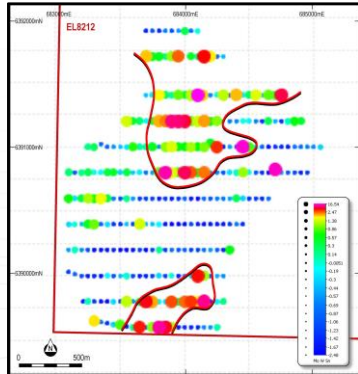
**Au-Cu-Pd-Pt Core**



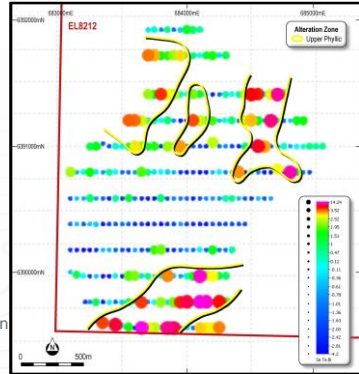
**Zn-Pb-Mn Outer Halo/Pyrite Zone**



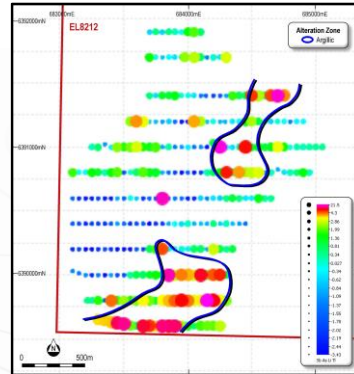
**Mo-W-Sn L. Phyllic Zone**



**Se-Bi-Te U. Phyllic Zone**

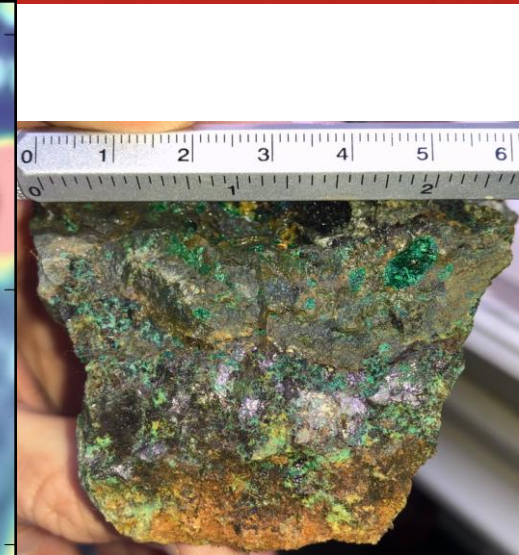
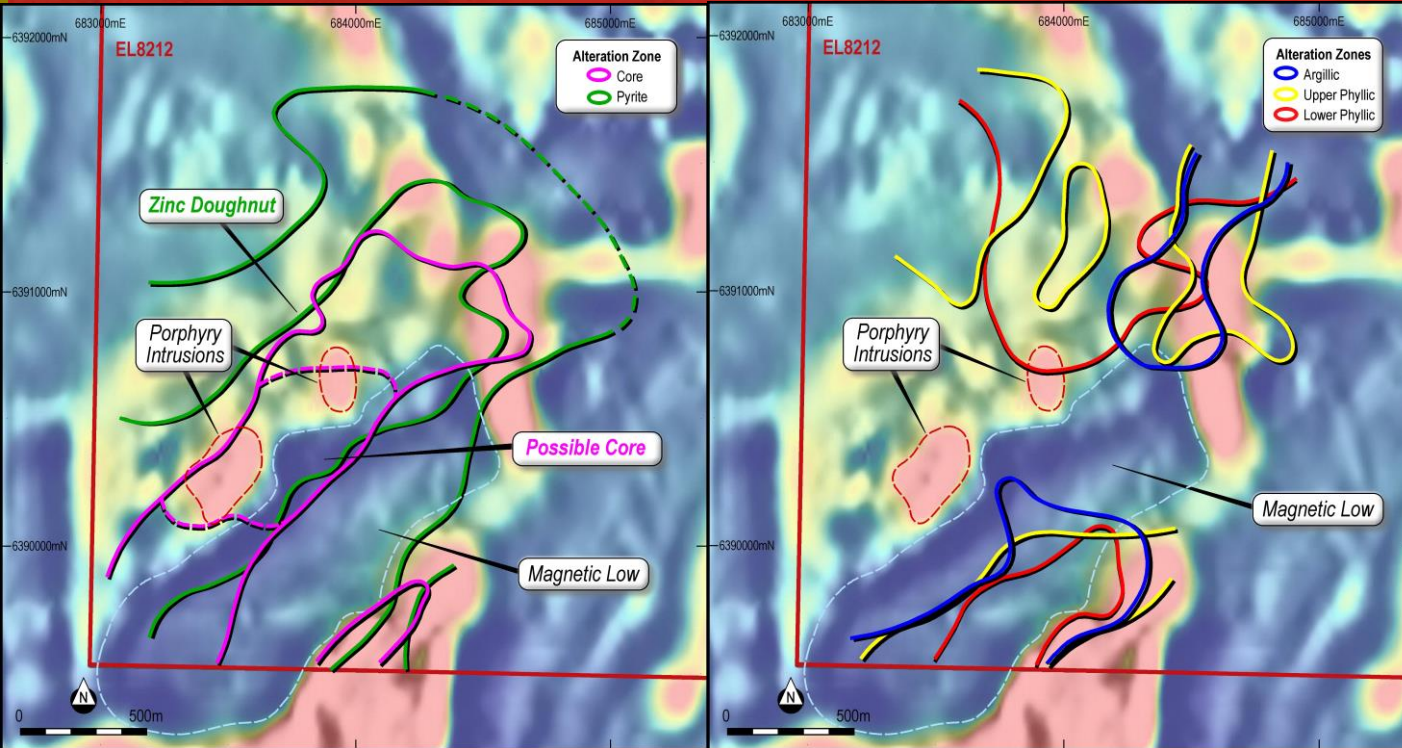


**Sb-As-Li-Tl Advanced Argillic Zone**



Text Book  
Patterns

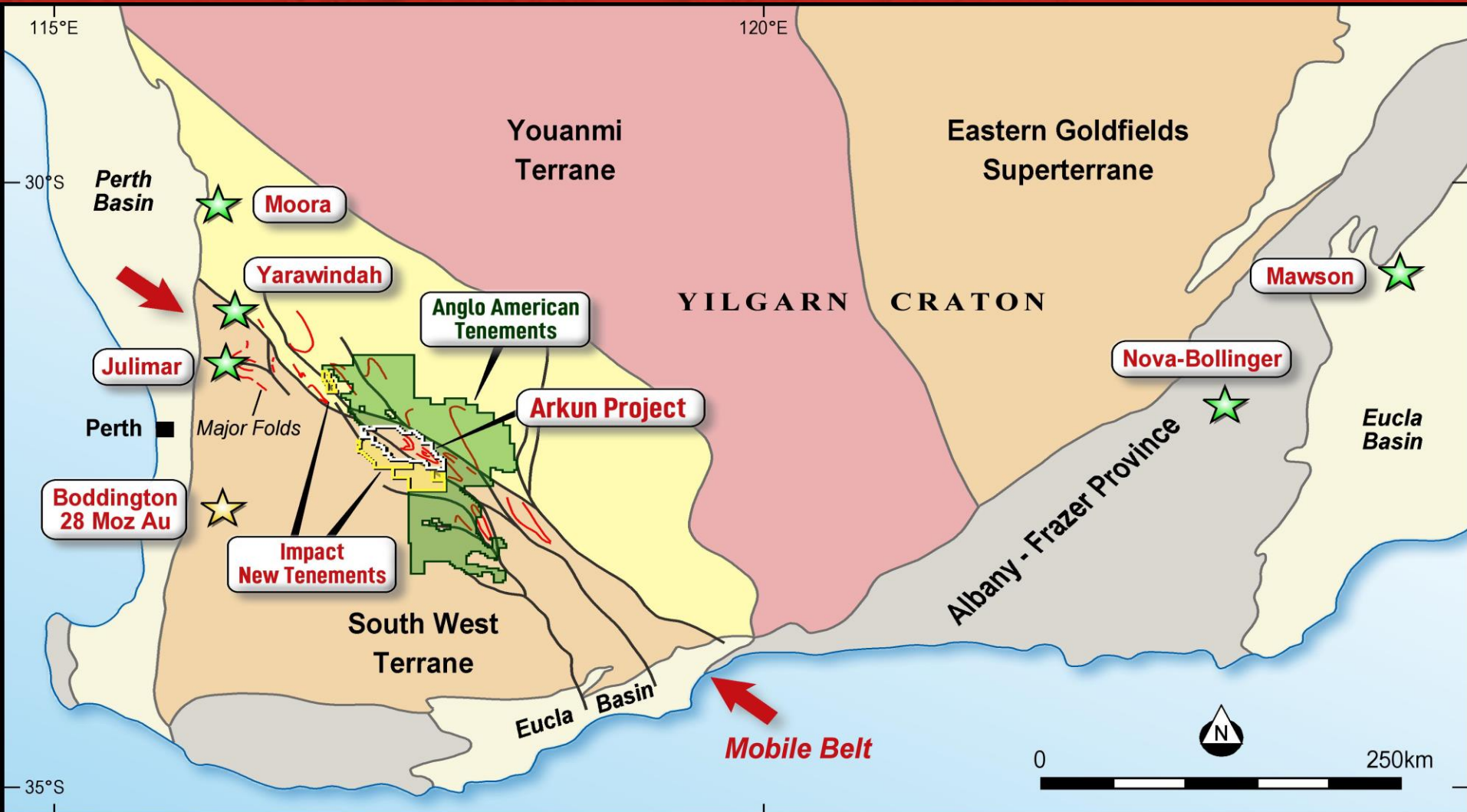
# Priority Target: APSLEY



Outcrops of fresh to weathered copper sulphides over 2 sq km with magnetic anomalies and classic porphyry copper-gold alteration systems. Three targets identified. IP survey in progress



# Arkun Project, SW Yilgarn Craton, WA



# 2020 Vision: Next Steps

## 1. Broken Hill, New South Wales (IPT 100%)

- Drilling commenced: Platinum Springs, Red Hill and Little Broken Hill Gabbro.
- Programme of 8,000 metres aircore, RC and diamond in progress.
- Assays due by early October.

## 2. Commonwealth, NSW (IPT: 100%)

- Major porphyry copper-gold target identified in soil geochemistry survey at Apsley.
- Ground IP survey in progress.
- Drill target definition and drill programmes in Q4 2020 subject to stat. approvals.

## 3. Other Projects (IPT 100%).

- Arkun and Blackridge: target generation awaiting grant of licences in Q4.

Drilling in progress

Drilling Q4

Target Generation

# DISCLAIMER

## What You Should Know

**Find out more** – This presentation is being used as a presenter's aid with summarised information. See Impact's other periodic and continuous disclosure announcements lodged with the Australian Securities Exchange, which are available at [www.asx.com.au](http://www.asx.com.au) or [www.impactminerals.com.au](http://www.impactminerals.com.au), for more information.

**Third party information** – Impact does not make any representations as to the accuracy or otherwise of third party information, including where projections are given.

**Forward-looking statements** – Within this presentation there may be certain forward-looking statements, opinions and estimates. These are based on assumptions and contingencies which are subject to change without notice and are not guarantees of future performance. Impact assumes no obligation to update such information.

**Taking action** – Please undertake your own evaluation of the information in this presentation and contact your professional advisers if you wish to buy or sell Impact shares.

## Competent Person Statement and JORC Compliance

**Exploration Results:** *The review of exploration activities and results contained in this report is based on information compiled by Dr Mike Jones, a Member of the Australian Institute of Geoscientists. He is a director of the company and works for Impact Minerals Limited. He has sufficient experience which is relevant to the style of mineralisation and types of deposits under consideration and to the activity which he is undertaking to qualify as a Competent Person as defined in the 2012 edition of the Australasian Code for Reporting of Exploration Results, Mineral Resources and Ore Reserves (the JORC Code). Mike Jones has consented to the inclusion in the report of the matters based on his information in the form and context in which it appears.*

The ASX Releases referenced below are on the Impact Minerals website at [www.impactminerals.com.au](http://www.impactminerals.com.au). The Company confirms that it is not aware of any new information or data that materially affects the information included in the most recent market announcement for each project, and in the case of Mineral Resources and Ore Reserves, that all material assumptions and technical parameters underpinning the estimates in the relevant market announcement continue to apply and have not materially changed. The Company confirms that the form and context in which the Competent Person's findings are presented have not materially changed from the original market announcement.

# JORC Compliance

The information in this presentation relating to Exploration Results has been extracted from the following reports:

ASX Release Date	Title of ASX Release
10 August 2020	Throwing the porphyry copper-gold rule book at Apsley
29 July 2020	Gladstone and the silver lining at Commonwealth
17 July 2020	Impact locks down majority of the Blackridge Gold Field Clermont QLD.
9 July 2020	The gravity of the situation at Little Broken Hill NSW
23 June 2020	Further significant targets at the Commonwealth Project.
10 June 2020	Expansion of the Arkun Ni-Cu-PGE Project east of Perth
7 May 2020	Extensive high grade rare PGM's at Red Hill.
23-Apr-20	Significant porphyry copper gold targets confirmed near the Boda discovery at Commonwealth
14-Jan-20	Four priority prospects for porphyry copper-gold targets identified at the Commonwealth Project
22-Nov-19	New Porphyry copper-gold targets near the Boda Kaiser discovery in the Lachlan Fold Belt
7-Mar-19	New geodynamic framework for Ni-Cu-PGE and Co-Cu-Au-REE at Broken Hill
13-Dec-18	Exploration Update: Broken Hill Project NSW
3-Feb-16	Very high grade PGM nickel-copper in massive sulphide at Platinum Springs
2-Nov-15	Further significant results at Red Hill
26-Oct-15	High grade rare PGM's at Red Hill
23-Oct-15	Extremely high grade drill intercept at Broken Hill
19-May-15	Widespread high grade rare platinum group metals confirmed in large arc east of Broken Hill
17-Apr-15	High grades of rare but potentially economic PGM elements assayed at Impact's Broken Hill Project
23-Jan-15	Further high grade PGE-copper-nickel assays returned at Red Hill Prospect, Broken Hill
17-Dec-14	High grade copper-nickel-PGE assays at Red Hill Prospect Broken Hill