

Kingston Resources Limited

Investor Presentation
Six Mile Hill & Cootanoorina Projects
18 November 2014

Kingston Resources Ltd

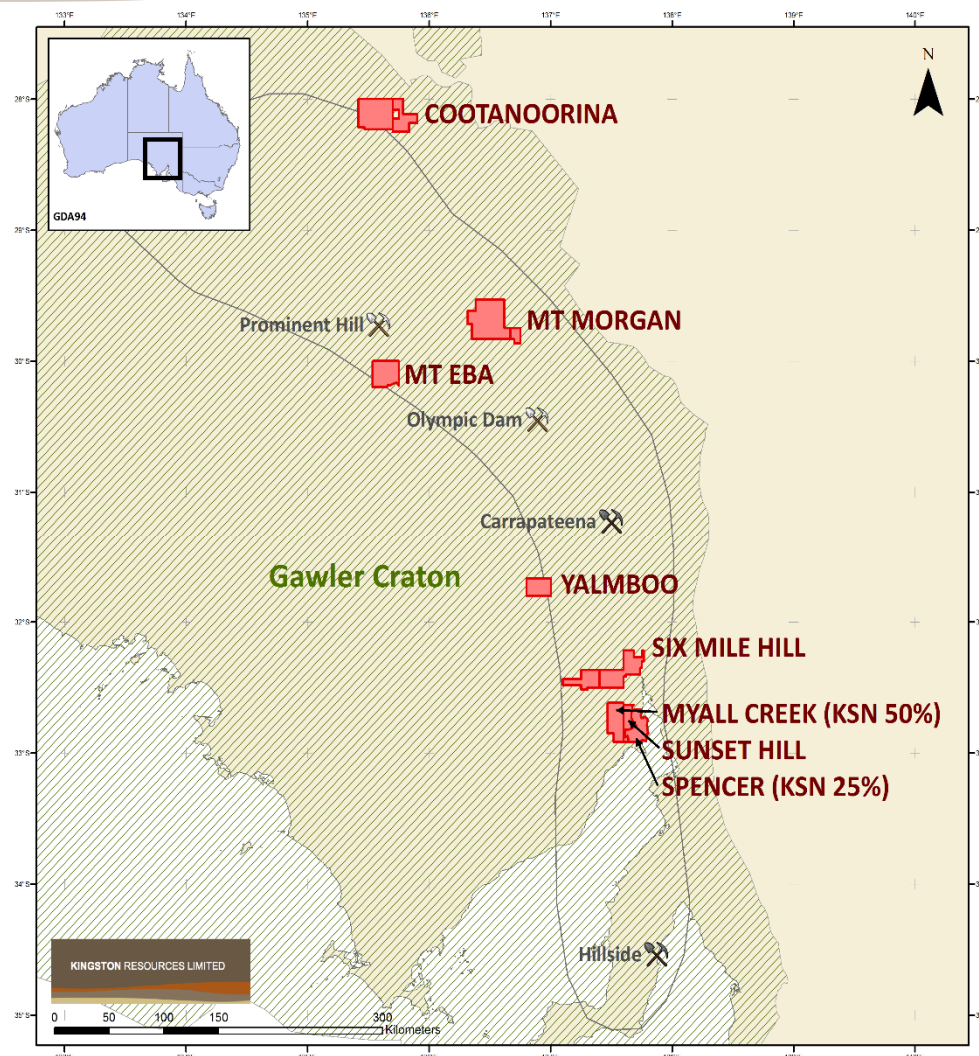
25-27 Jewell Parade North Fremantle, Western Australia 6159

t +61 8 9336 6619 **f** +61 8 9335 3565 **w** www.kingstonresources.com.au **e** info@kingstonresources.com.au

KINGSTON RESOURCES LIMITED

About Kingston Resources (ASX:KSN)

- Exploration activities are centered in South Australia with an interest in eleven prospective IOCG projects in the Olympic Arc corridor in the Gawler Craton.
- Kingston is now highly focused on identifying IOCG drill targets at two of its projects:
 - Six Mile Hill - EL 4494 and newly granted EL 5498; and
 - Cootanoorina - EL 4462 and newly granted EL 5487.
- Kingston's Rights Issue Prospectus is Fully Underwritten by CPS Capital to raise \$0.755 m Offer Closes on 9/12/2014.
- Funds raised to be applied:
 - \$0.50 m in identifying, designing and implementing drilling program at above projects; and
 - \$0.25m on working capital and cost of issue.



KINGSTON RESOURCES LIMITED – Corporate Overview

Capital Structure*

Board of Directors

		Pre Rights Issue	Post Underwritten Rights Issue*
■ Jonathan Davies, BJuris, LLB- Chairman	Shares on Issue (KSN :Quoted)	49,439,168	103,307,665
■ Mathew Whyte, BCom, CPA, FCSA	Shares on Issue (Unquoted)	40,341,660	40,341,660
■ Yafeng Cai, CPA	TOTAL SHARES ON ISSUE	89,780,828	143,649,325
Key Personnel	Options on Issue (KSNO :Quoted)	10,302,500	10,302,500
■ Mr Barry Bourne, BSc(Hon), FAIG, MAICD - Consultant/ Chief Geophysicist	Options on Issue (Unquoted)	21,400,000	21,400,000
	Market Capitalisation @ \$0.014	\$1.25m	\$2.00 m
	Cash balance Pro- forma 30/9/14	\$0.55m	\$1.26m

*Fully Underwritten rights issue now open at issue price \$0.014/ Share on the basis of 3 New Shares for every 5 held at the Record Date, issuing a maximum 53,868,497 New Shares to raise up to \$754,159 (before costs). Refer to Rights Issue Prospectus dated 4/11/2014 <http://www.kingstonresources.com.au/prospectus>

KINGSTON RESOURCES LIMITED – IOCG Mineralisation

Characteristics of IOCG Deposits

- **Location** - Edge/ inboard of stable Craton boundary (typically 50-100km) eg Olympic Domain
- **Structure** - Large scale (transfer)structures eg regional scale NE orientation for Olympic Dam and Prominent Hill
- **Mineralisation** - Numerous mineral (Cu) occurrences as well as economic IOCG deposits in region
- **Magmatism** - Abundant, long lived felsic and mafic magmatism of right age eg Hiltiba granites and Gawler Range Volcanics
- **Host** - Evidence of uplift coinciding with mineralisation age and age equivalent host rocks eg Hiltiba granites and Gawler Range Volcanics
- **Alteration** - Hematite-sericite-carbonate-chlorite offset from K-feldspar-sericite-magnetite alteration eg anomalous density and associate magnetic feature

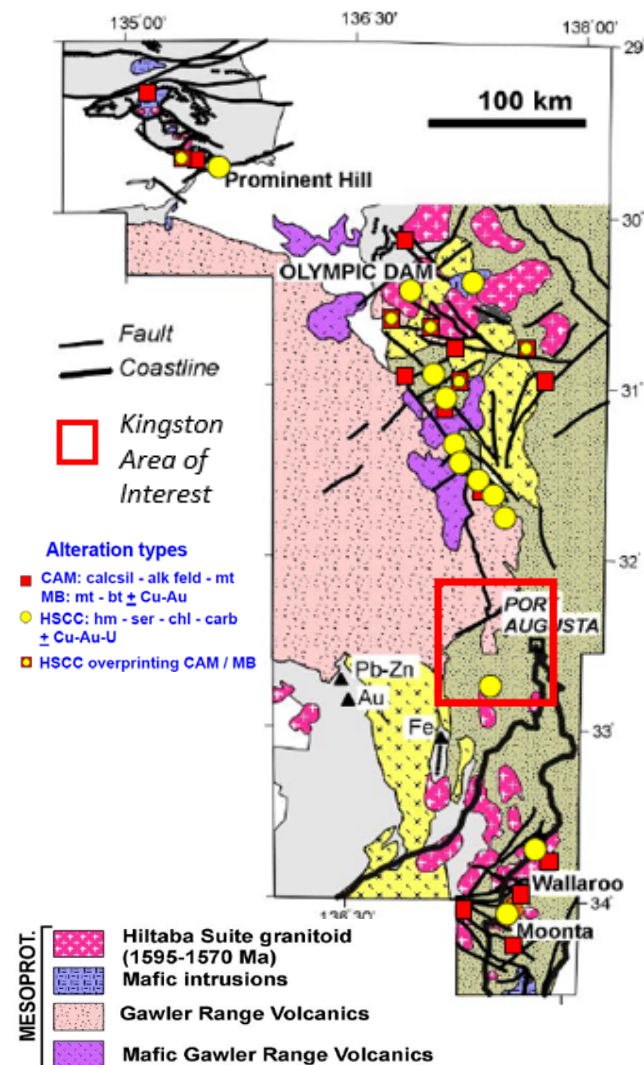
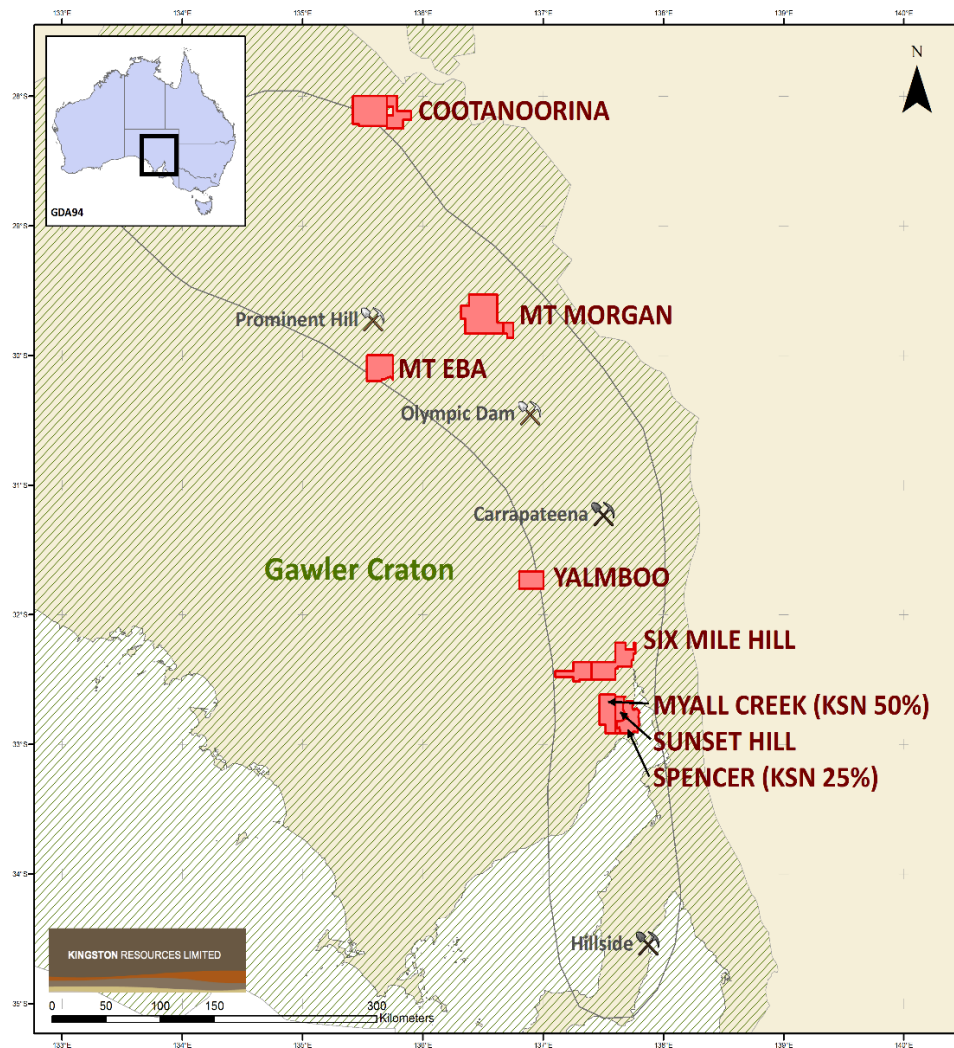


Figure after Skirrow et. al. (2004)

KINGSTON RESOURCES LIMITED – Six Mile Hill Project



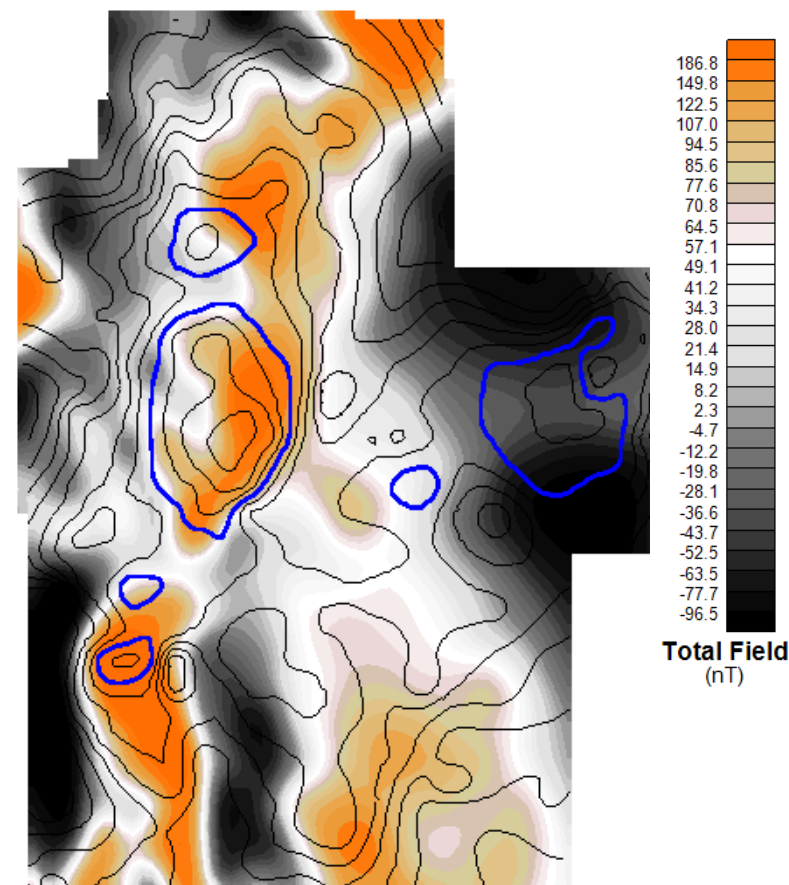
✓ Access

- The Six Mile Hill project lies approximately 45km to the west of the regional center of Port Augusta at the northern tip of Spencer's Gulf.
- The Six Mile Hill project consists of EL 4494 and the newly granted 2 year EL 5498 immediately east of EL 4494 (both 100% owned)
- Ground-based, geophysical gravity survey has been completed at the Six Mile Hill project.
- Kingston has signed Native Title Mining Agreements (NTMA) with local traditional land owners Barngarla Aboriginal Corporation.

KINGSTON RESOURCES LIMITED – Six Mile Hill

Characteristics of Six Mile Hill Project

- ✓ **Location** – In the Olympic Domain as defined by Geoscience Australia and SARIG
- ✓ **Structure** - Regional scale NE orientation as defined by gravity ridge and regional geology
- ✓ **Mineralisation** – Local Cu mineral occurrences (in drilling) with Hillside to South and Carrapateena to the north.
- ✓ **Magmatism** - Hiltiba granites outcropping to south and Gawler Range Volcanics in project area
- ✓ **Host** – Evidence of uplift from gravity ridge with outcropping Gawler Range Volcanics. Currently better defining geology from historical drilling.
- ✓ **Alteration** – Potential for hematite alteration as defined in new gravity data by +1mGal 1.2km x 1.8km gravity feature offset from 300nT magnetic anomaly



Six Mile residual magnetics with detailed gravity contours in black/ blue. Gravity contours (0.2mGal). Main target largest feature (1.4km across) associated with slightly offset magnetic high

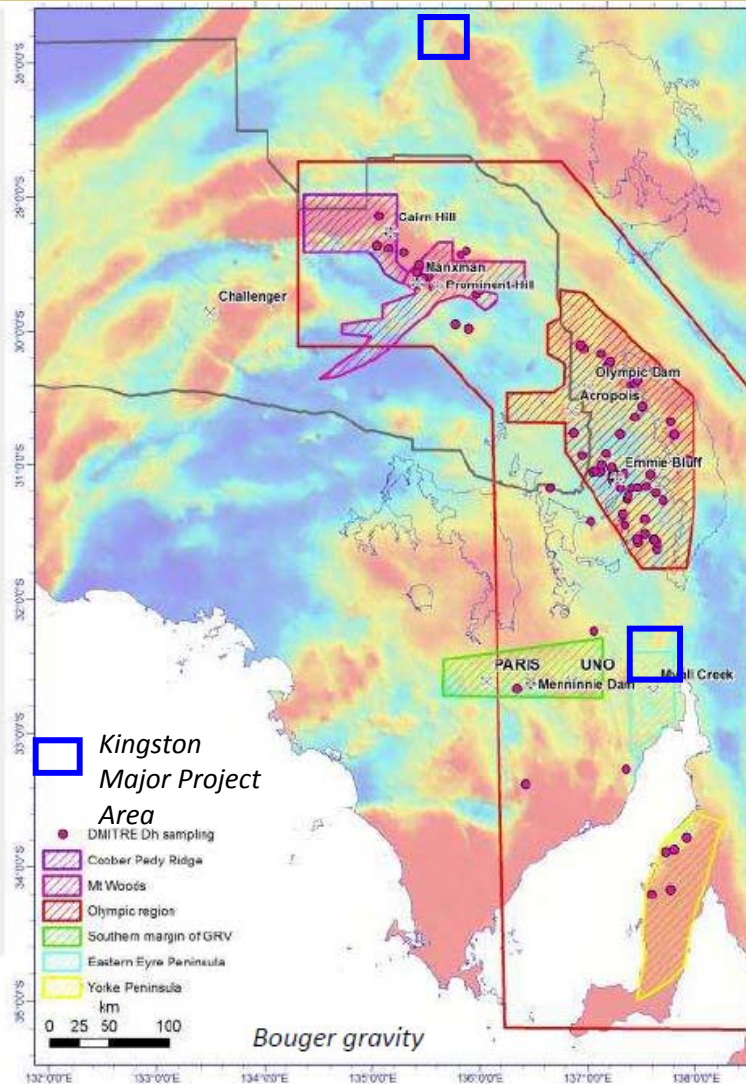
KINGSTON RESOURCES LIMITED – Six Mile Hill Project

SA Mineral Systems Drill Program

- Drill program offers opportunity to build on DMITRE's regional footprint mapping.
- GSSA – Key areas of interest highlighted although all proposed locations will be considered



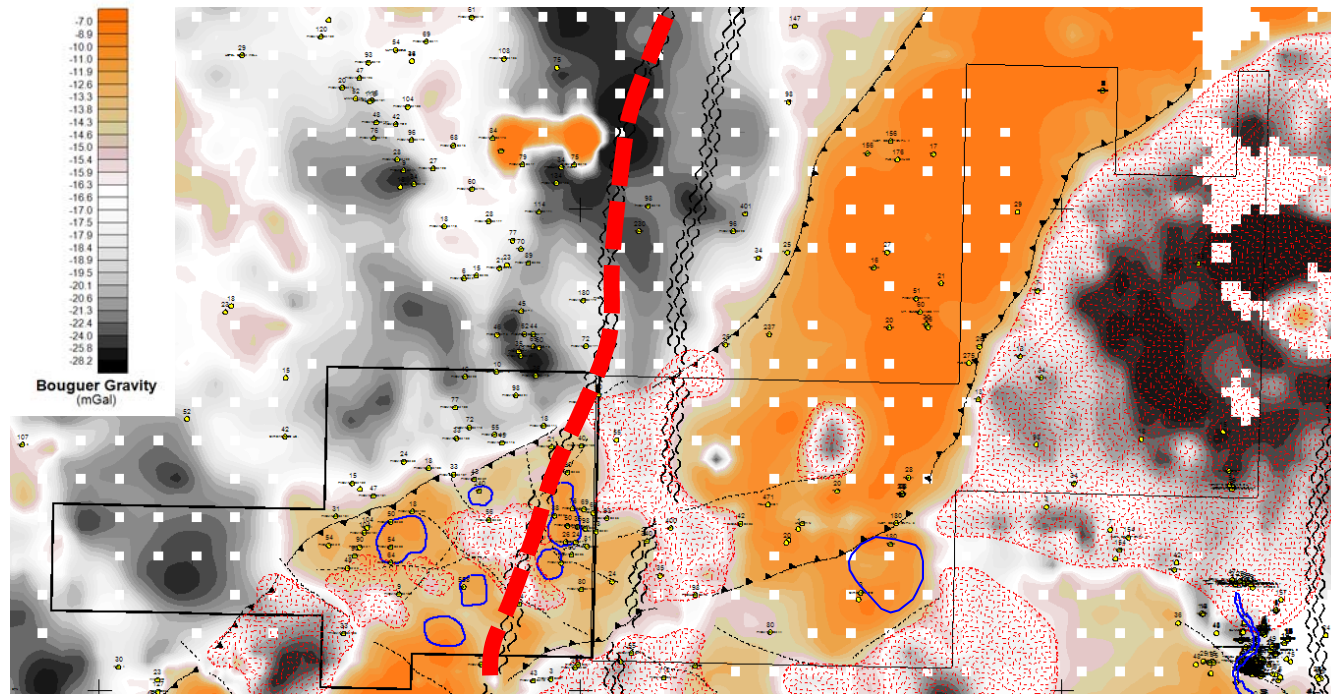
DEEP EXPLORATION
TECHNOLOGIES CRC
Uncovering the future



✓ Location

- Application submitted to SA Dept State Development (DSD) for the 2015 SA Mineral Systems Drill Program at Six Mile Hill.
- DET will partner with DET -CRC using new technologies for exploration through thick cover rocks
- Successful applicants expected to be notified late Calendar Yr 2014
- There is no assurance that the application will be successful

KINGSTON RESOURCES LIMITED – Six Mile Hill Project

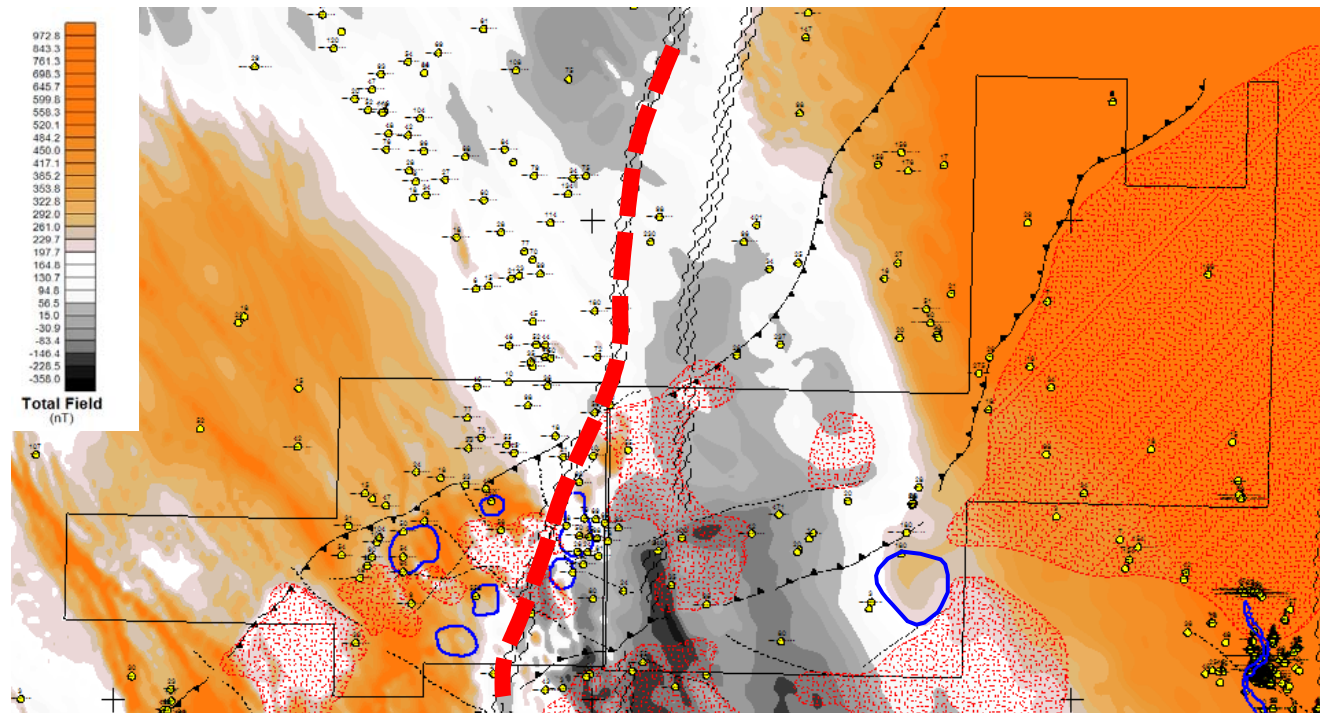


Residual Regional Bouguer gravity (2.67g/cc) with regional structure and interpreted felsic intrusives (Hiltiba equivalent?) in pink and gravity features in blue. Dominate NE/NW trending fault arrays. Tenement width ~60km.

✓ Location and Structure

- Likely position of KSZ (Kalinjala Shear Zone) in red as one of the bounding structures to the Olympic Domain.
- Potential gravity targets in the Olympic Domain between NW/NE trending structures.

KINGSTON RESOURCES LIMITED – Six Mile Hill Project



Residual Regional RTP Magnetics with regional structure and interpreted felsic intrusives (Hiltiba equivalent?) in pink and gravity features in blue. Dominate NE/NW trending fault arrays with Olympic Domain Boundary(?) in red. Tenement width ~60km.

✓ Location and Structure

- Likely position of KSZ (Kalinjala Shear Zone) in red as one of the bounding structures to the Olympic Domain.
- Potential gravity/magnetic targets in the Olympic Domain between NW/NE trending structures.

KINGSTON RESOURCES LIMITED – Six Mile Hill Project

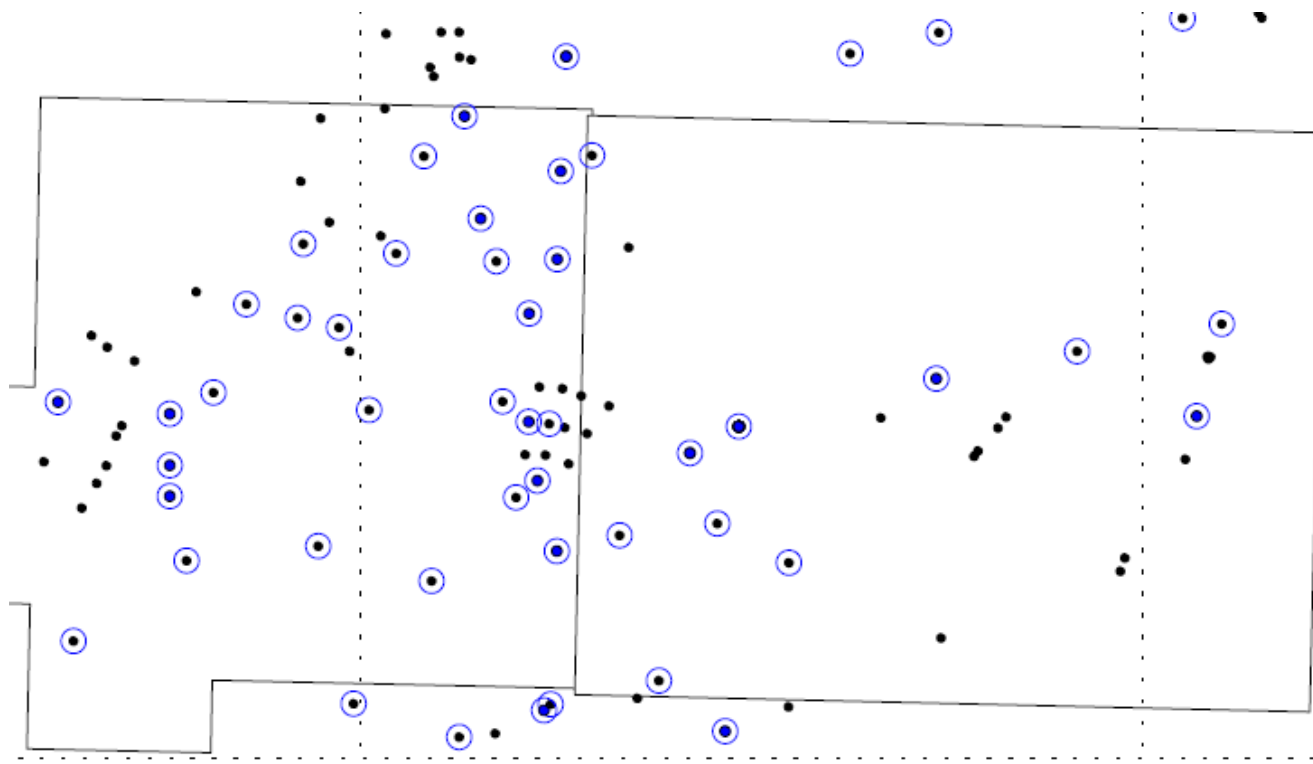


Figure width ~40km.

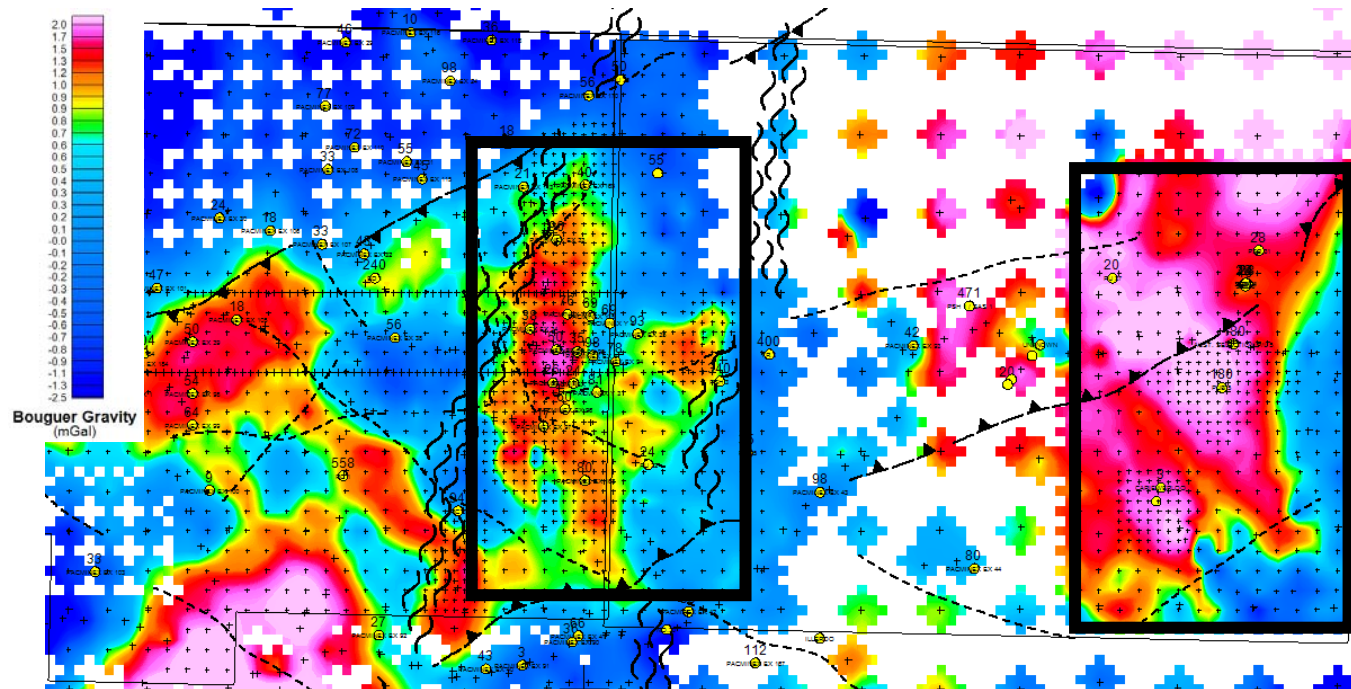
✓ Mineralisation

- Open file and historical drill holes small dots, holes that have been assayed for copper circled in blue
- Solid blue dots copper assays >250ppm
- Cu in younger rocks above older rocks of interest
- Aim to target IOCG mineralisation/alteration

KINGSTON RESOURCES LIMITED – Six Mile Hill Project

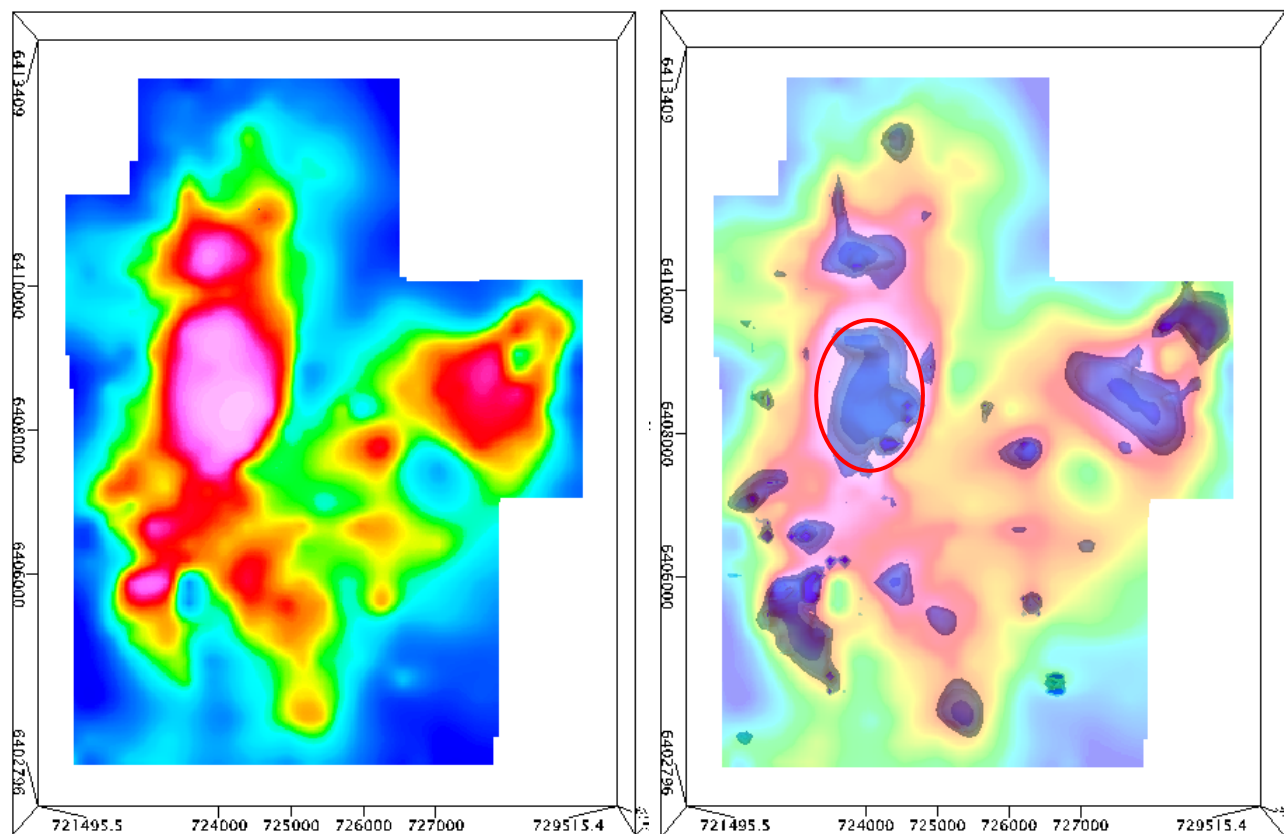
✓ Alteration

- Residual detailed Bouguer gravity (2.67g/cc) with regional structure
- Gravity features defined by new gravity (black dots)
- Detailed gravity modelling areas in black rectangles for Six Mile and Six Mile East



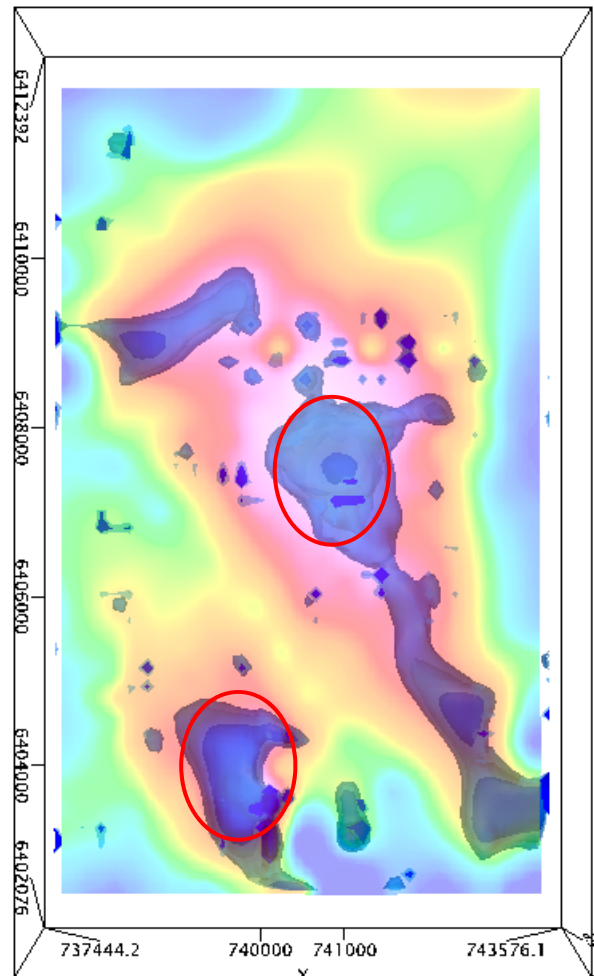
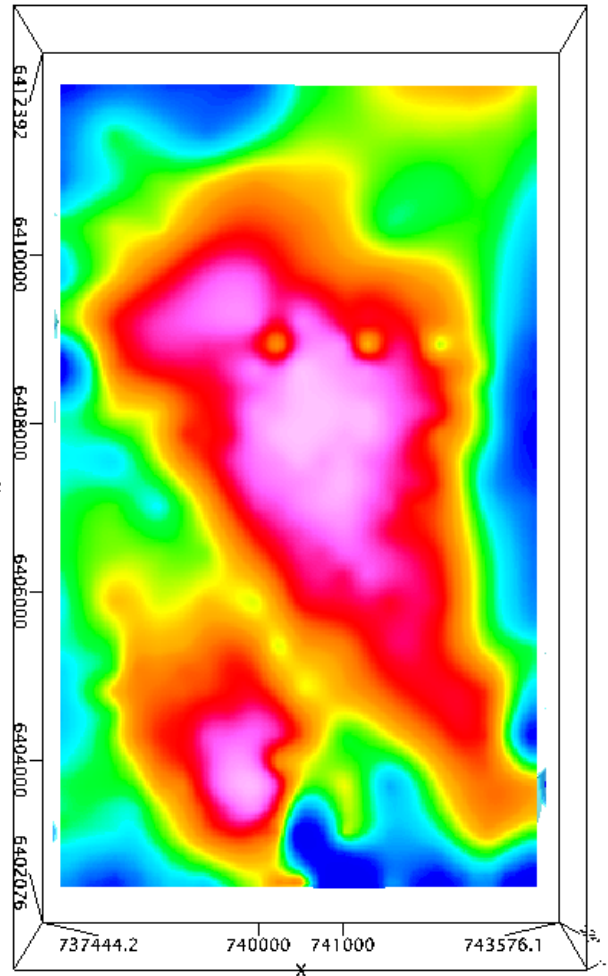
KINGSTON RESOURCES LIMITED – Six Mile Hill Project

✓ Alteration



- Residual detailed Bouguer gravity (2.67g/cc) for the Six Mile area with preliminary 100m x 100m x 50m gravity model
- Gravity isosurfaces of density, +0.075g/cc light blue outer shell, +0.15g/cc in dark blue inner (0.15g/cc equivalent to Prominent Hill early modelling)
- Main area of interest (due to associated magnetic response) shown in red. Depth to top of feature ~300m

KINGSTON RESOURCES LIMITED – Six Mile Hill East



✓ Alteration

- Residual detailed Bouguer gravity (2.67g/cc) for the Six Mile East area with preliminary 100m x 100m x 50m gravity model on the right
- Gravity (blue) – Isosurfaces of density, +0.075g/cc light blue outer shell, +0.15g/cc in dark blue inner (0.15g/cc equivalent to Prominent Hill early modelling)
- Features of interest shown in red

KINGSTON RESOURCES LIMITED – Six Mile Hill Project

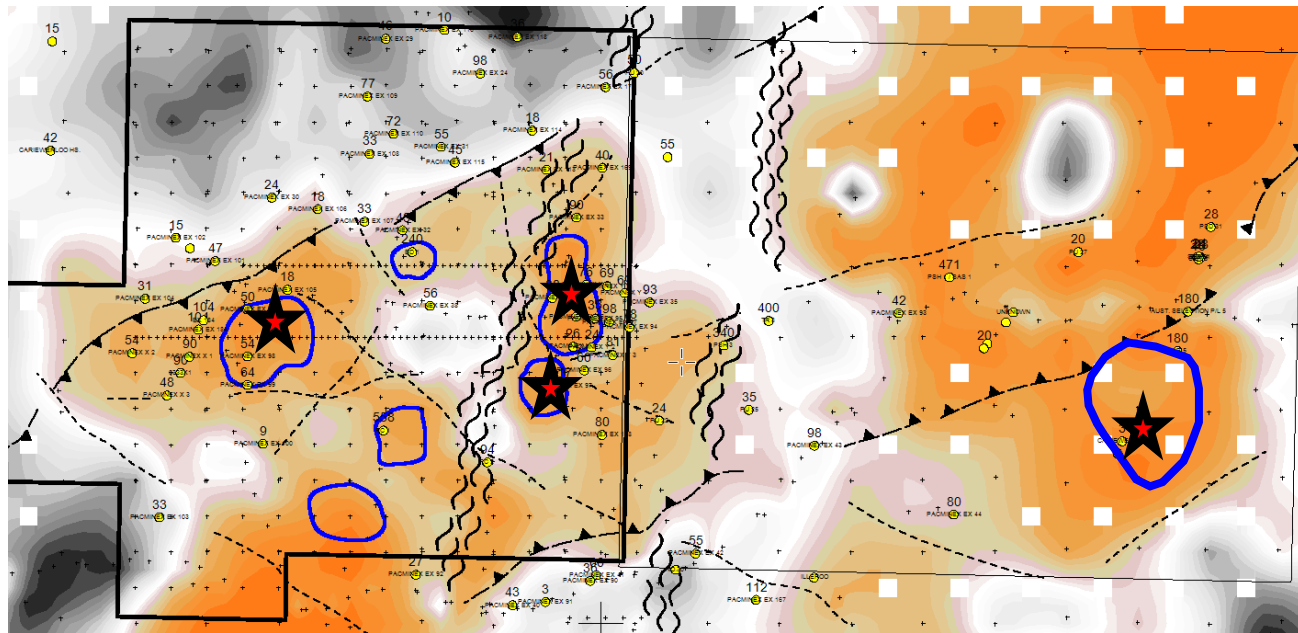
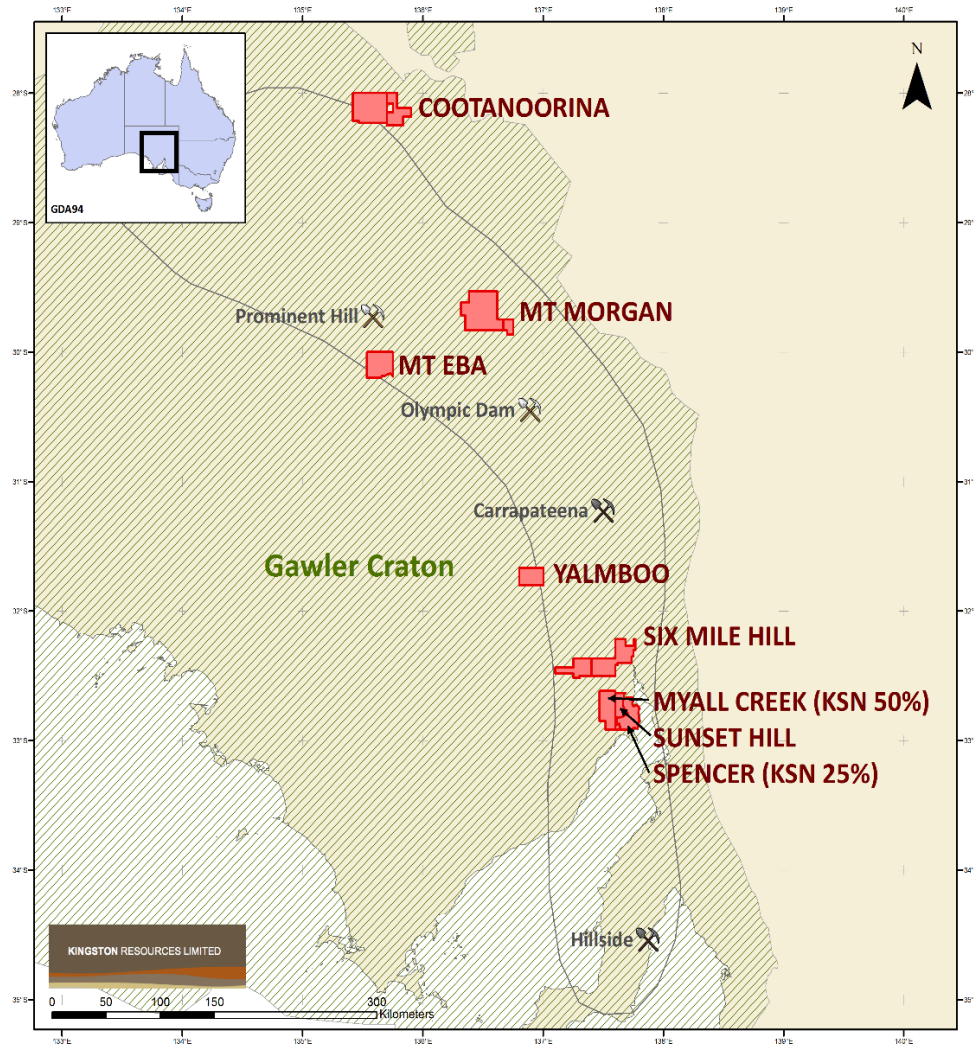


Figure width ~40km.

✓ Drilling targets

- Residual Regional Bouguer gravity (2.67g/cc) with drill holes in yellow with total depth (above) and gravity features from regional data in blue.
- Dominate NE/NW trending fault arrays.
- Conceptual drill hole locations annotated with stars

KINGSTON RESOURCES LIMITED – Cootanoorina Project



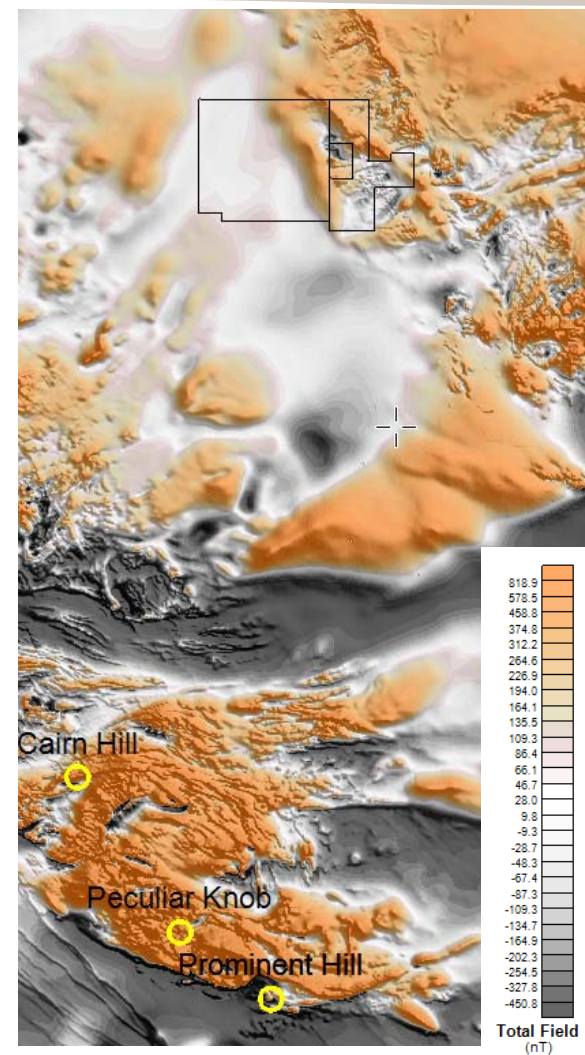
✓ Access

- The Cootanoorina Project lies approximately 60km to the south of the regional center of Oodnadatta in central outback South Australia
- The Cootanoorina project consists of EL 4462 and the newly granted 2 year EL 5487 immediately east of EL 4462 (both 100% owned)
- Ground based, geophysical gravity survey has been completed at the Cootanoorina project
- Kingston has signed Native Title Mining Agreements (NTMA) with local traditional land owners Arabana Aboriginal Corporation

KINGSTON RESOURCES LIMITED – Cootanoorina

Characteristics of Cootanoorina Project

- ✓ **Location** – On the margin of Olympic Domain as defined by Geoscience Australia and SARIG
- ✓ **Structure** - Regional scale NE orientation in regional gravity, magnetics and outcrop geology to east
- ✓ **Mineralisation** – Local Cu mineral occurrences to east with Prominent Hill to the south west. Trace sulphide in veins in drilling with haematite selvage (no sericite)
- ✓ **Magmatism** – Paleoproterozoic volcanics intersected in drilling immediately north of project with granite dykes and sills
- ✓ **Host** – Evidence of uplift from gravity ridge and outcrop to east. Currently better defining geology from historical drilling.
- ✓ **Alteration** – Potential for hematite alteration as defined in new gravity data and magnetite for regional magnetic data.

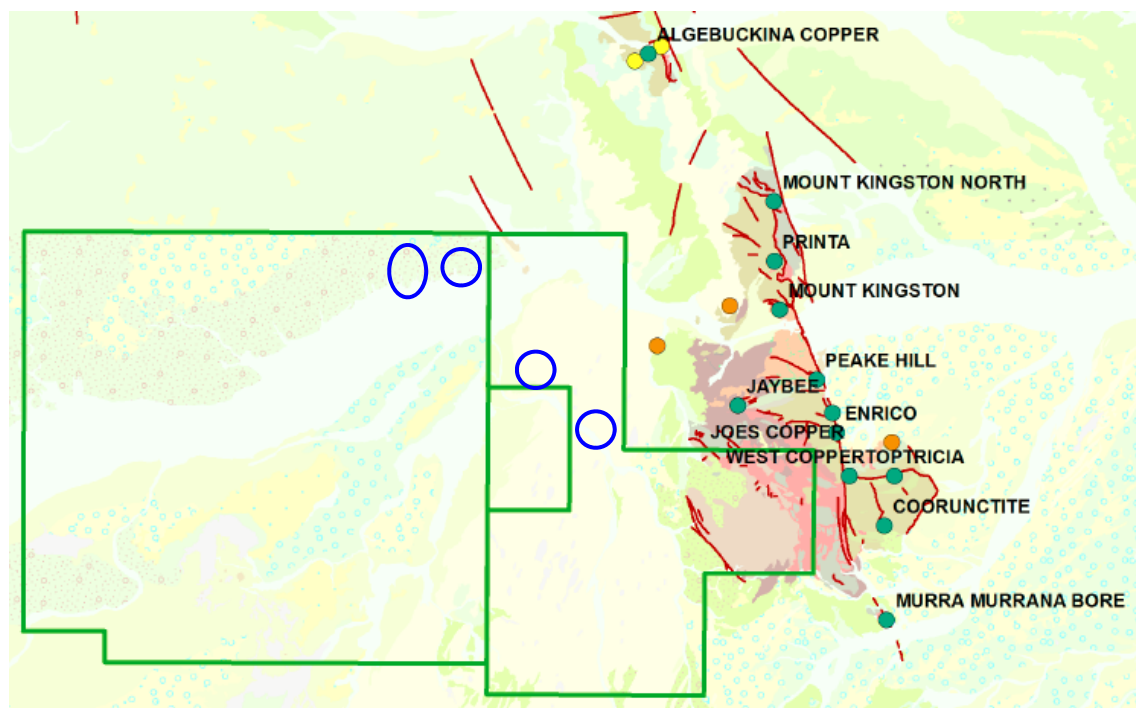


Residual regional magnetics with major deposit locations

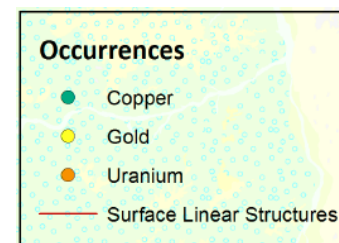
KINGSTON RESOURCES LIMITED – Cootanoorina Project

✓ Mineralisation

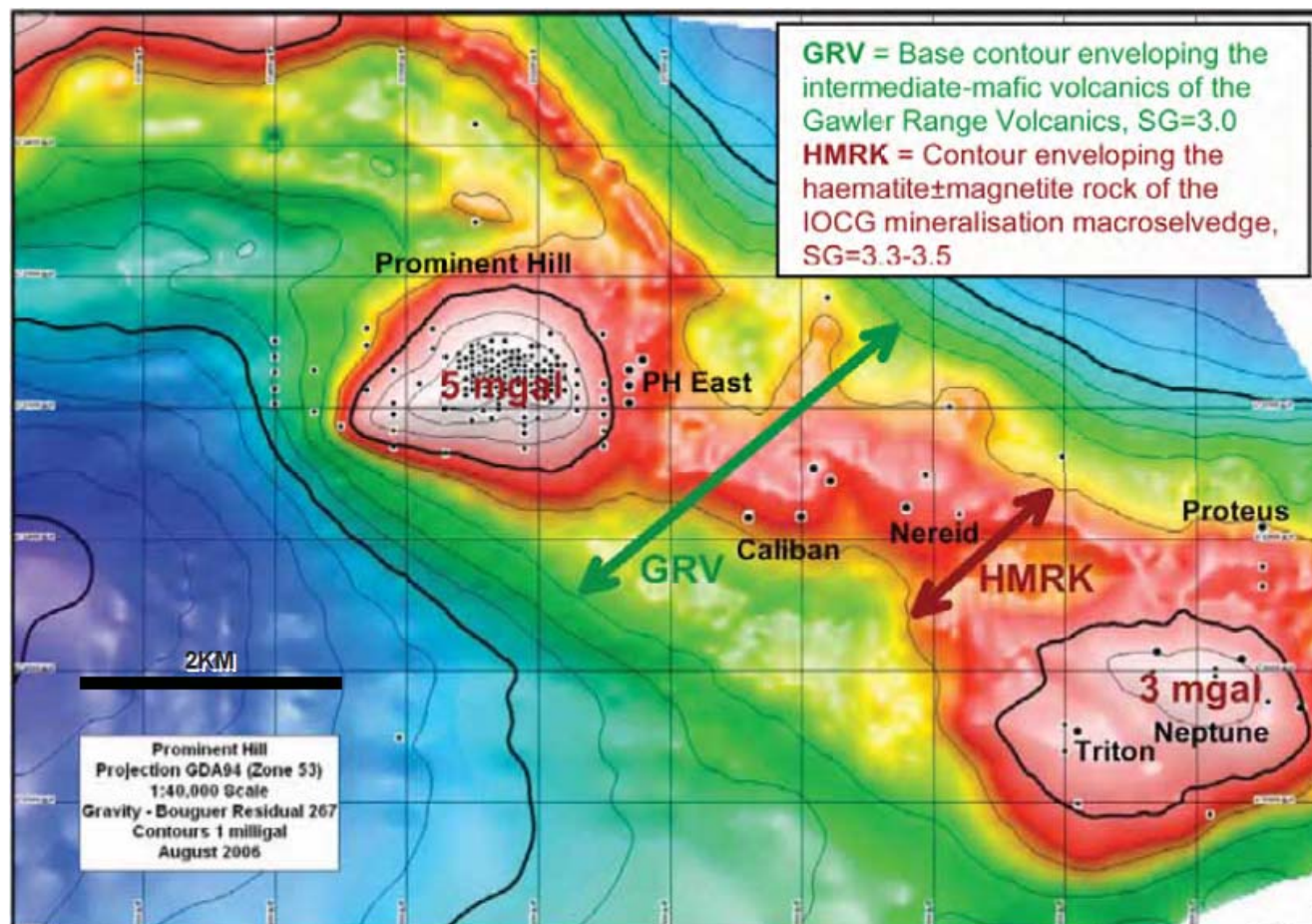
- Cu/Au occurrences in older Proterozoic Peak and Dennison Metamorphics
- Looking for IOCG mineralisation along NW oriented structure under shallow cover to the west



Surface geology, target locations with mineral occurrences. Tenement width ~46km.



KINGSTON RESOURCES LIMITED – Prominent Hill



✓ Alteration (Type Case)

- Broader gravity high from Gawler Range Volcanics with isolated 1km x 1km highs from haematite/magnetite IOCG mineralisation

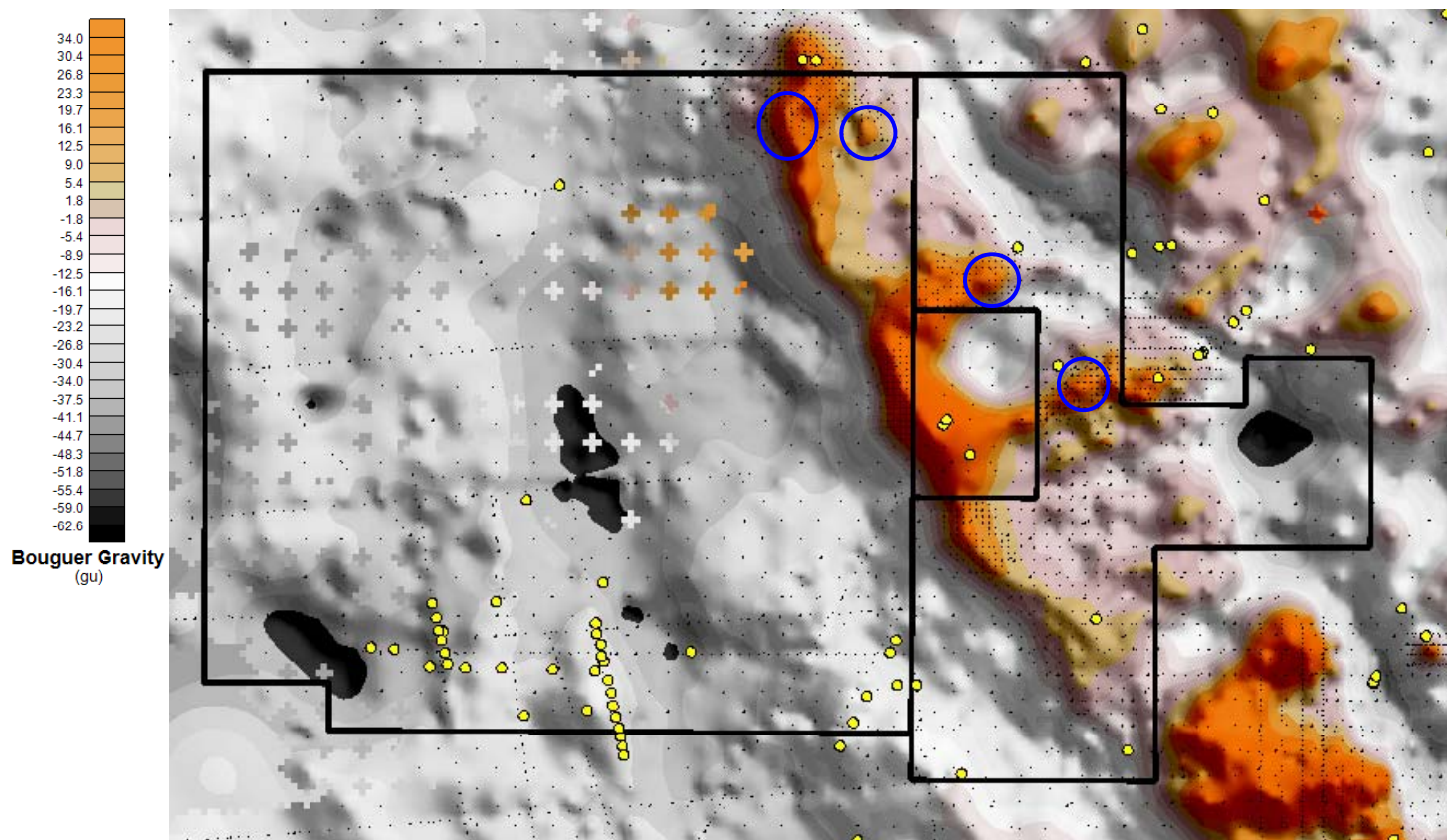
Taken from Oxiana presentation, 2006

- Note: KSN has no interest in Prominent Hill

KINGSTON RESOURCES LIMITED – Cootanoorina Project

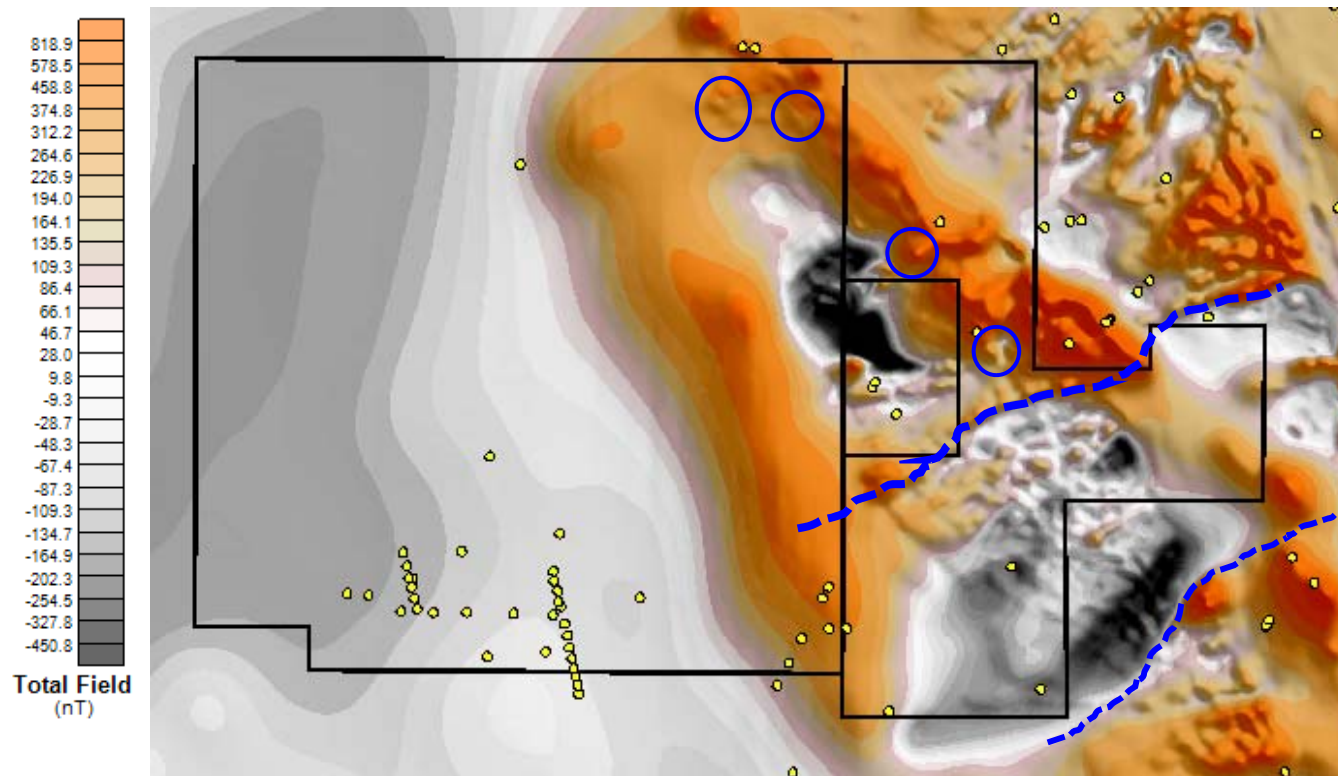
✓ Alteration

- Residual detailed Bouguer gravity (2.67g/cc) with regional structure
- Gravity features defined by new gravity (black dots)
- Detailed gravity modelling has confirmed target potential
- Historical drilling show in yellow



Tenement width ~46km.

KINGSTON RESOURCES LIMITED – Cootanoorina Project

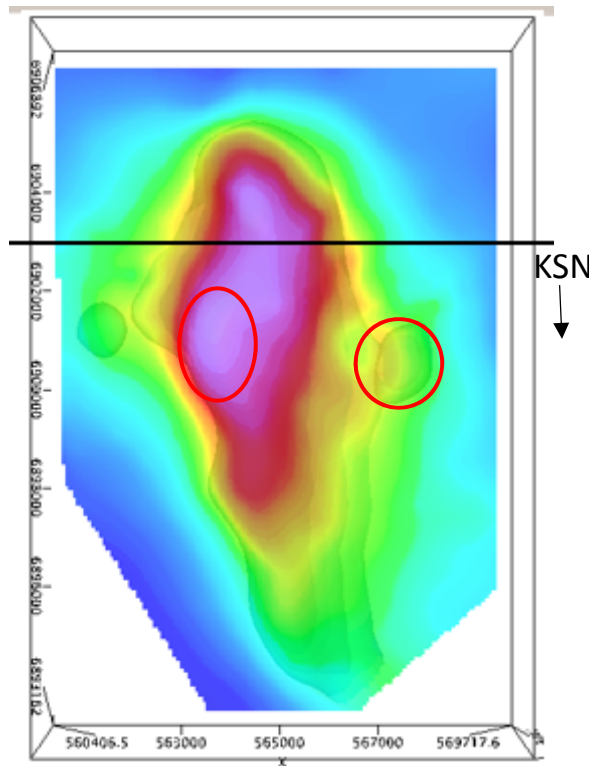
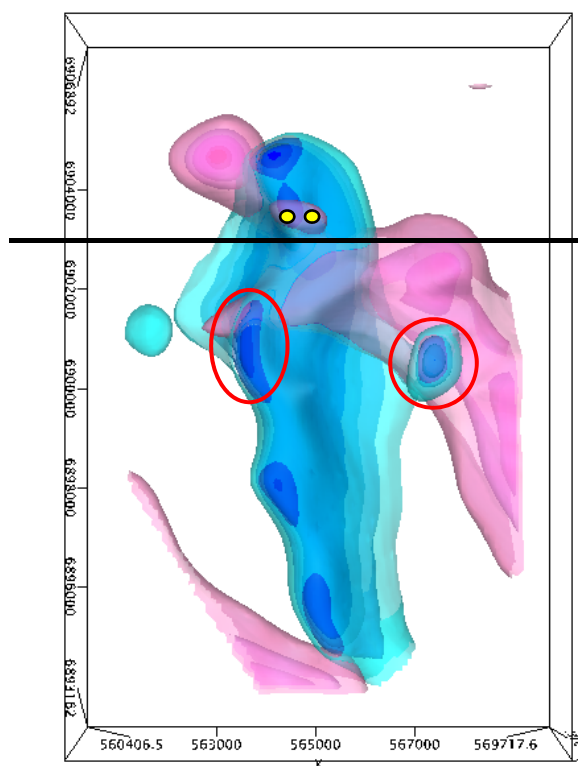


Tenement width ~46km.

✓ Alteration and Structure

- Residual airborne magnetic with regional NE structure
- Gravity and magnetic modelling has confirmed target potential
- Historical drilling show in yellow

KINGSTON RESOURCES LIMITED – Cootanoorina Project



✓ Alteration

- Residual detailed Bouguer gravity (2.67g/cc) for the Cootanoorina North Prospect with preliminary 100m x 100m x 50m gravity model on the right
- Gravity (blue) – Isosurfaces of density, +0.075g/cc light blue outer shell, +0.15g/cc in dark blue inner (0.15g/cc equivalent to Prominent Hill early modelling)
- Magnetics – Isosurfaces of susceptibility, +100 x 10⁻³ SI in pink
- Area of interest (due to associated magnetic response) shown in red. Depth to top of features ~350m

KINGSTON RESOURCES LIMITED – Summary

- Exploration activities are centered in South Australia with an interest in eleven prospective IOCG projects in the Olympic Domain in the Gawler Craton.
- Gravity acquisition and gravity/ magnetic modelling has confirmed IOCG potential at Six Mile Hill and Cootanoorina projects
- Ongoing geological compilation of historical drilling to validate geological interpretation and target potential
- Application submitted to SA Department State Development for the 2015 SA Mineral Systems Drill Program at Six Mile Hill. Notification to successful applicants early December 2014
- Highest priority targets are at Six Mile Hill
- Drilling ready targets planned early 2015

KINGSTON RESOURCES LIMITED- Disclaimer

This presentation has been prepared by Kingston Resources Limited (KSN or the Company). It contains general information about the Company's activities current as at the date of the presentation. The information is provided in summary form and does not purport to be complete. This presentation is not to be distributed (nor taken to have been distributed) to any person in any jurisdictions to whom an offer or solicitation to buy shares in the Company would be unlawful. Any recipient of the presentation should observe any such restrictions on the distribution of this presentation and warrants to the Company that the receipt of the presentation is not unlawful. It should not be considered as an offer or invitation to subscribe for or purchase any securities in the Company or as an inducement to make an offer or invitation with respect to those securities. No agreement to subscribe for securities in the Company will be entered into on the basis of this presentation or any information, opinions or conclusions expressed in the course of this presentation.

This presentation is not a prospectus, product disclosure document or other offering document under Australian law or under any other law. It has been prepared for information purposes only. This presentation contains general summary information and does not take account the investment objectives, financial situation and particular needs of any individual investor. It is not financial product advice and investors should obtain their own independent advice from qualified financial advisors having regards to their objectives, financial situation and needs. Neither KSN nor any of their related bodies corporate is licensed to provide financial product advice. This presentation and information, opinions or conclusions expressed in the course of this presentation contains forecasts and forward looking information. Such forecasts, projections and information are not a guarantee of future performance, involve unknown risks and uncertainties. Actual results and developments will almost certainly differ materially from those expressed or implied.

There are a number of risks, both specific to KSN and of a general nature which may affect the future operating and financial performance of KSN and the value of an investment in KSN. A summary of those risks is contained in the KSN Rights Issue Prospectus dated 4 November 2014 at sections 1.4 and 5. <http://www.kingstonresources.com.au/prospectus>

You should not act or refrain from acting in reliance on this presentation, or any information, opinions or conclusions expressed in the course of this presentation. This presentation does not purport to be all inclusive or to contain all information which its recipients may require in order to make an informed assessment of the prospects of KSN. You should conduct your own investigation and perform your own analysis in order to satisfy yourself as to the accuracy and completeness of the information, statements and opinions contained in this presentation before making any investment decision. Recipients of this presentation must undertake their own due diligence and make their own assumptions in respect of the information contained in this presentation and should obtain independent professional advice before making any investment decision based on this information. No representation or warranty, express or implied, is made in relation to the fairness, accuracy or completeness of the information, opinions and conclusions expressed in the course of this presentation. To the maximum extent permitted by law, no representation warranty, express or implied, is made and to the maximum extent permitted by law, no responsibility or liability is accepted by the Company or any of its officers, employees, agents or consultants or any other person as to the adequacy, accuracy, completeness or reasonableness of the information in this presentation. To the maximum extent permitted by law, no responsibility for any errors or omissions from this presentation whether arising out of negligence or otherwise is accepted. An investment in the shares is to be considered speculative.

This presentation and information, opinions and conclusions expressed in the course of this presentation should be read in conjunction with KS's other periodic and continuous disclosure announcements lodged with the ASX.

KINGSTON RESOURCES LIMITED- Competent Person

Competent Person Statement

The information in this presentation that relates to results of geophysical exploration is based upon information compiled by Mr Barry Bourne, who is employed as a Consultant to the Company through geophysical consultancy Terra Resources Pty Ltd. Mr Bourne is a fellow of the Australian Institute of Geoscientists and a member of the Australian Society of Exploration Geophysicists. He has proper and relevant experience with the styles of mineralisation as well as the kinds of mineral deposits under consideration and activities undertaken. This is sufficient to qualify him as a “Competent Person” as defined in the 2012 Edition of the Joint Ore Reserves Committee (JORC) Australasian Code for Reporting of Exploration Results, Mineral Resources and Ore Reserves. Mr Bourne consents to the inclusion in the presentation of matters based on information in the form and context in which it appears.

The most recent JORC Code 2012 edition reporting information on the information contained within this Presentation can be reviewed in the KSN Exploration Update-October 2014 announcement as released to ASX 30th October 2014.