



**Kinetiko Energy Limited**  
**ACN:141 647 529**

283 Rokeby Rd  
SUBIACO WA 6008

Phone: +61 8 6315 3500

Fax: +61 8 9481 1947

Email: [info@kinetikoenergy.com.au](mailto:info@kinetikoenergy.com.au)

Web: [www.kinetikoenergy.com.au](http://www.kinetikoenergy.com.au)

**ASX: KKO**

**20<sup>th</sup> November 2014**

#### **ASX ANNOUNCEMENT**

### **KINETIKO ENERGY GRANTED GAS LICENSES IN BOTSWANA**

Kinetiko Energy Ltd is pleased to report that it has been granted 12 prospecting gas licenses covering a total of 7093km<sup>2</sup>. The licenses are located in the Karoo Kalahari Basin of Botswana (Figure 1). The Kalahari Basin is known to contain extensive coal deposits and has been recognised as having major coal bed methane potential. The gas market fundamentals are attractive with the opportunity to replace expensive diesel fired power generation and supply growing domestic and cross border energy demand (Figure 2).

The Kinetiko license areas were selected after basin studies indicated the potential for deep coal facies within the basin and related gas in sandstone accumulations. The gas potential of the Kalahari Basin has been further demonstrated with recent reports of successful flow commencement by Tlou Energy Ltd at its Lesedi CBM Project (Figure 2) Selemo 1P and Mopani 2P wells.

Kinetiko Energy holds a 100% equity in its Botswana licenses. The licences have an initial two year tenure, with opportunity for renewal. Kinetiko intends to follow an exploration and evaluation strategy that it has used at its Amersfoort gas discovery in neighboring South Africa.

#### **About Kinetiko Energy**

Kinetiko Energy is an Australian gas explorer focused on advanced gas and coal bed methane (CBM) opportunities in rapidly developing markets in Southern Africa. South Africa has extensive gassy coal basins, extensive energy infrastructure and a growing gas demand, making it an attractive area for investment. The Company has a large potential exploration area, in excess of 16,000km<sup>2</sup>.

**For more information visit:** [www.kinetikoenergy.com.au](http://www.kinetikoenergy.com.au) **or contact,** James Searle, Acting Managing Director, Kinetiko Energy Limited, +61 8 6315 3500

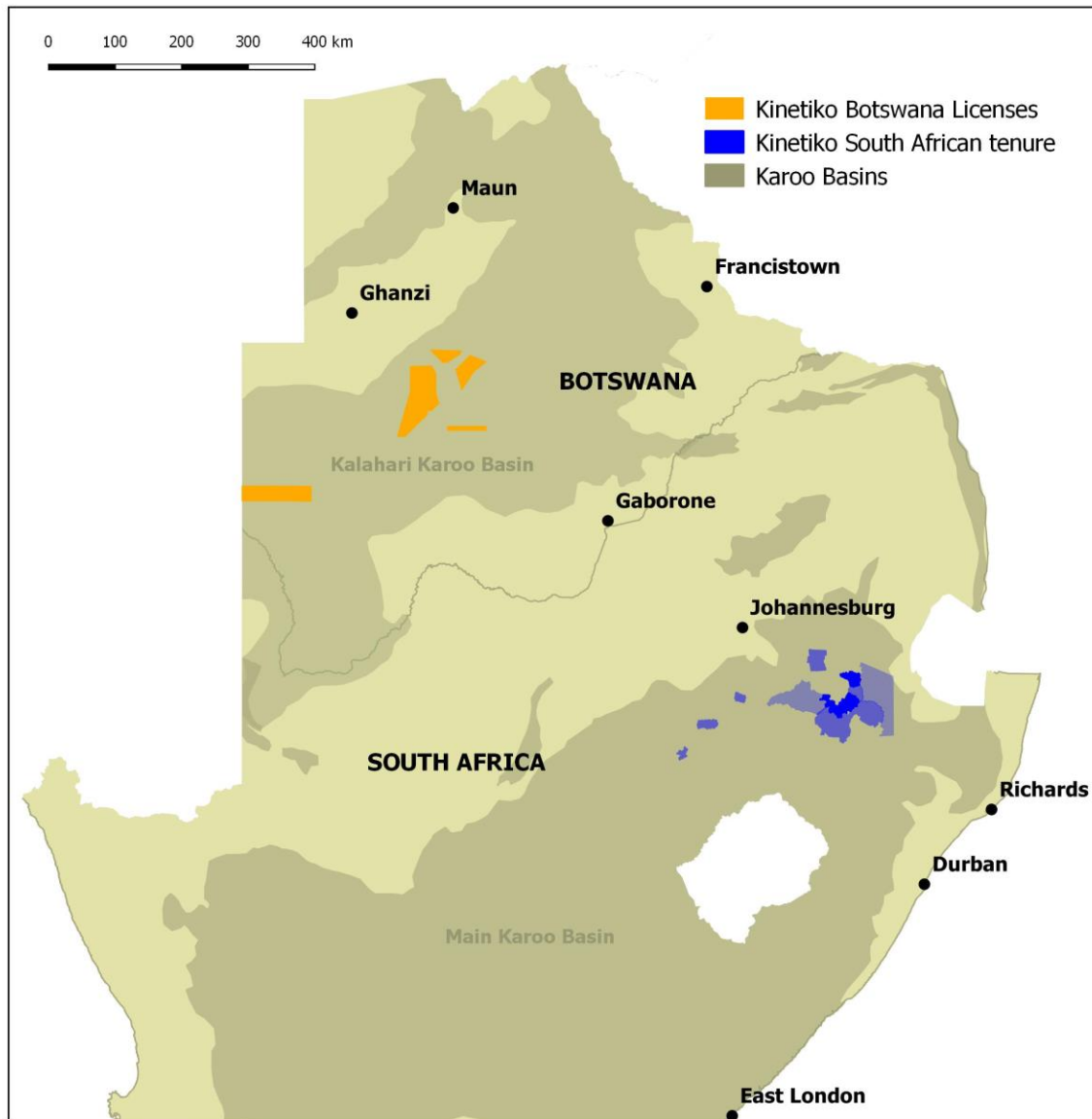


Figure 1 Location of Kinetiko Energy Ltd's tenure in Botswana and South Africa

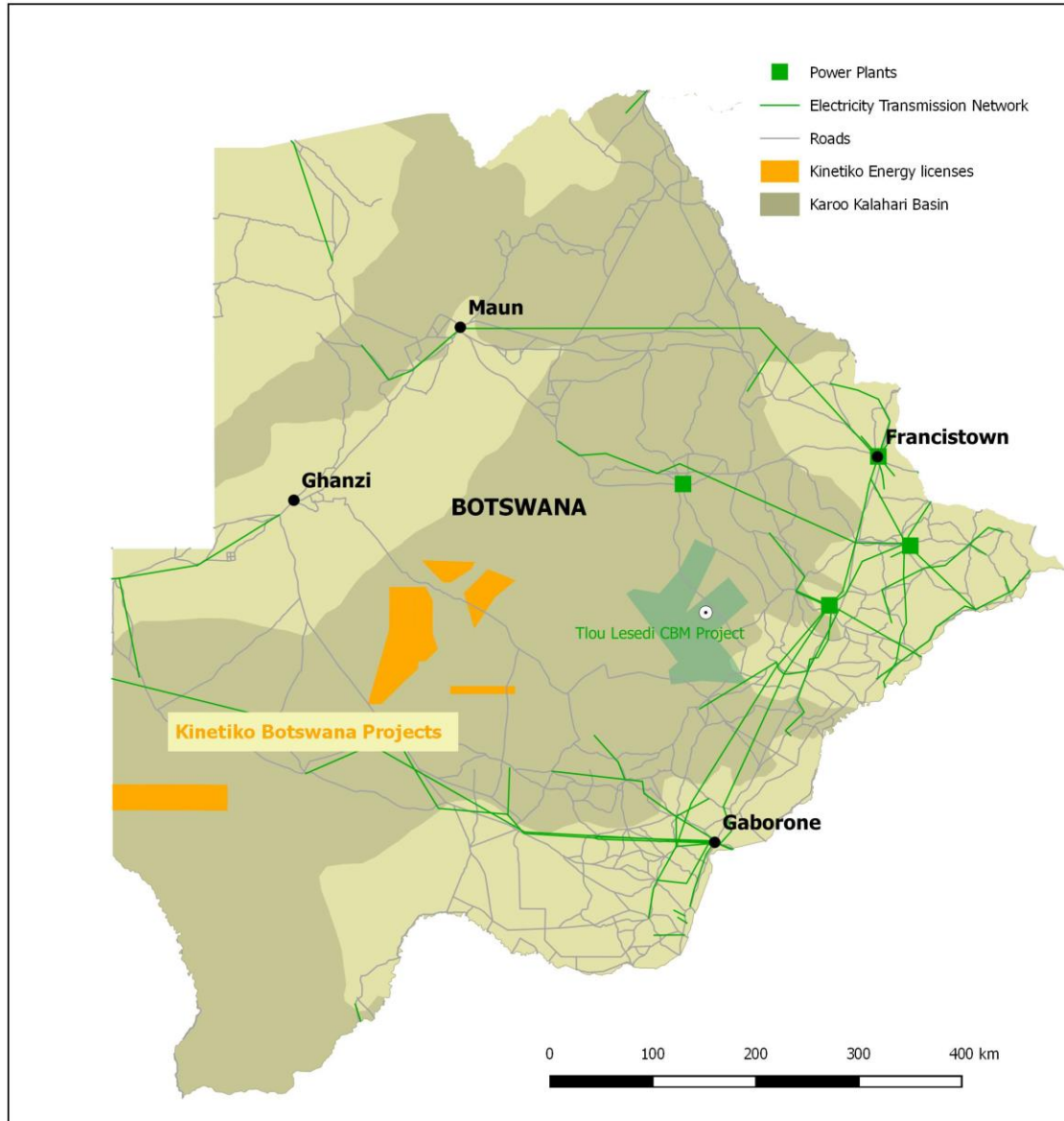


Figure 2 Location of Kinetiko Energy Ltd's Botswana gas licenses.