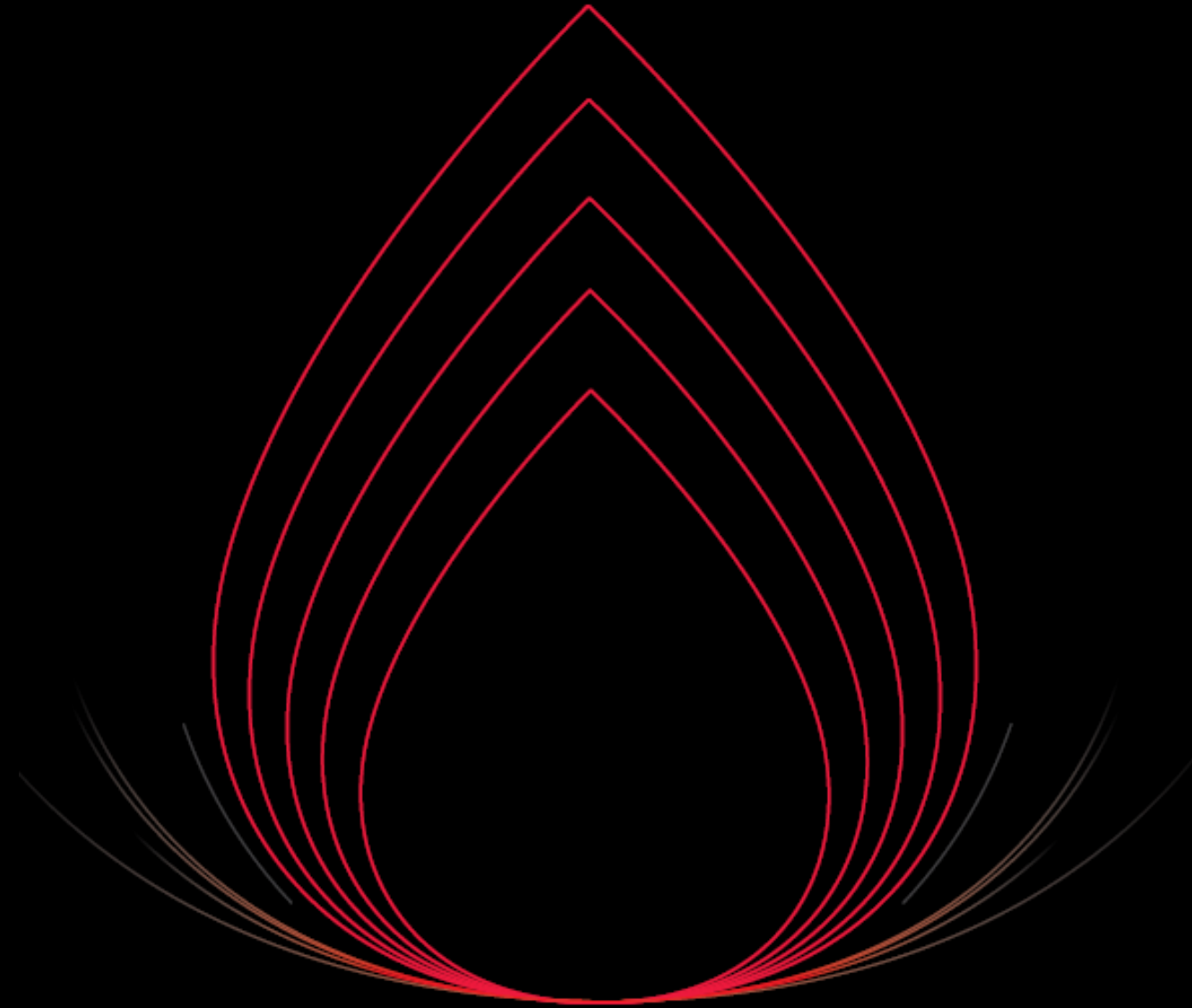


TARGET ENERGY LIMITED

**ANNUAL GENERAL MEETING
PERTH**

21 NOVEMBER 2014



DISCLAIMER AND FORWARD-LOOKING STATEMENTS



This Presentation is provided on the basis that none of the Company nor its respective officers, shareholders, related bodies corporate, partners, affiliates, employees, representatives and advisers make any representation or warranty (express or implied) as to the accuracy, reliability, relevance or completeness of the material contained in the Presentation and nothing contained in the Presentation is, or may be relied upon as, a promise, representation or warranty, whether as to the past or the future. The Company hereby excludes all warranties that can be excluded by law.

All persons should consider seeking appropriate professional advice in reviewing the Presentation and all other information with respect to the Company and evaluating the business, financial performance and operations of the Company. Neither the provision of the Presentation nor any information contained in the Presentation or subsequently communicated to any person in connection with the Presentation is, or should be taken as, constituting the giving of investment advice to any person.

Certain statements in this presentation contain 'forward-looking statements' including, without limitation to: expectations, beliefs, plans and objectives regarding production and exploration activities. Any matters that are not historical facts are forward-looking and accordingly, involve estimates, assumptions, risks and uncertainties and other factors discussed in our most recently lodged Annual Report, our website, <http://www.targetenergy.com.au>, and in our other public documents and press releases. These forward-looking statements are based on Target Energy Limited's ("Target") current expectations, estimates and projections about the company, its industry, its management's beliefs and certain assumptions made by management. No assurance can be given that such expectations, estimates or projections will prove to have been correct. A number of factors could cause actual results to differ materially from the projections, anticipated results or other expectations expressed in this presentation, including, Target's ability to meet its production targets, successfully manage its capital expenditures and to complete, test and produce the wells and prospects identified in this presentation; to successfully plan, secure necessary government approvals, finance and to achieve its production and budget expectations on its projects.

Whenever possible, these 'forward-looking statements' are identified by words such as "expects," "believes," "anticipates," "projects," and similar phrases. Because such statements involve risks and uncertainties, Target's actual results and performance may differ materially from the results expressed or implied by such forward-looking statements. Given these risks and uncertainties, you are cautioned not to place undue reliance on such forward-looking statements, which speak only as of the date hereof. Unless legally required, we assume no duty to update these statements as of any future date. However, you should review carefully reports and documents that Target lodges periodically with the Australian Securities Exchange.

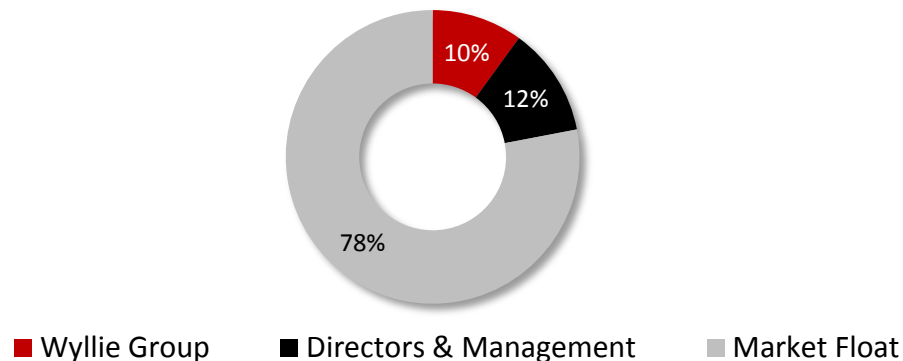
NOTE: In accordance with ASX Listing Rules, any hydrocarbon reserves and/or drilling update information in this report has been reviewed and signed off by Mr Laurence Roe, B Sc, Managing Director of Target Energy, who is a member of the Society of Exploration Geophysicists and has over 30 years experience in the sector. He consents to that information in the form and context in which it appears.

COMPANY SNAPSHOT

Overview

- US Permian Basin and Gulf Coast, oil focused
- Offices in Houston, Texas and Perth, Western Australia
- Producing oil & gas and generating strong operating cash flows
- Low-risk, development-led growth
- Actively expanding acreage position in the Permian Basin and Gulf Coast

Shareholder Composition



Key Metrics

ASX Code	• TEX
OTCQX Code (US)	• TEXQY
Shares on issue ¹	• 499.7m
Unlisted options on issue ¹	• Nil
Share price ¹	• A\$0.045 (TEX) • US\$3.35 (TEXQY)
Market Capitalisation ¹	• A\$22.5m
Adjusted Cash ²	• A\$2.7m
Convertible Notes ²	• A\$9.0m – 179m Con. Notes (@5c)

Operating Metrics

Net Daily Production ³	• 230 boepd (approx. 67% oil)
Gross Acres	• 5,580
Net Acres	• 2,825
Net Reserves & Resources ⁴	<ul style="list-style-type: none"> • 1P Reserves: 734 mboe • 2P Reserves: 1,000 mboe • 3P Reserves: 1,285 mboe • 3C Contingent Resources: 862 mbo

Notes:

1. As at 20 November 2014, including shares allotted from the October 2014 rights issue. On the OTCQX International platform, Target trades in American Depositary Receipts (ADR's). Each ADR = 100 Ordinary Target Energy shares.
2. Cash position and debt position at 31 October 2014, including proceeds from rights issue of \$2.0m (announced 18/11/2014)
3. Average daily production in September 2014 including recent production from Ballarat #1 (announced November 10). Production figures are net to Target's working interest but before royalties
4. Reserves and resources as at 30 June 2014. See full list of disclosures and risks related to reserves and resources detailed in ASX release on 5 September 2014. The Company is not aware of any new information or data that materially effects the information included in the previous announcement and believes that all material assumptions and technical parameters underpinning the estimates in the previous announcement continue to apply and have not materially changed.

ALIGNED BOARD AND MANAGEMENT

Chris Rowe
Chairman

- BA, MA Economics and Law (Cambridge)
- Over 35 years of legal and commercial experience in the oil and gas and resources sector
- Chairman of ASX listed Northern Star Resources and Hawkesbridge Private Equity
- Sits on the advisory committee of US-based Avalon Oil and Gas Production Partnership
- Former Executive Chairman of Cultus Petroleum NL, Chairman of International Oilex (TSX) and Deputy Chair of UTS Energy (TSX)

Laurence Roe
Managing
Director

- BSc
- Co-founder of Target Energy Limited
- Petroleum professional with over 30 years global industry experience
- Held senior and consulting positions with numerous Australian companies including Magellan Petroleum and Hardman Resources
- Former Managing Director and Exploration Manager of Bounty Oil & Gas NL (ASX)

Stephen Mann
Non Executive
Director

- CA, Fellow of Institute of Chartered Accountants of Australia
- Over 30 years of experience in public practice with over 25 years experience in the resources sector
- Non-Executive Chairman to Altus Renewables Limited
- Former Managing Partner of BDO Chartered Accountants and founder of BDO's Corporate Finance Division

Dr. Ralph Kehle
Chairman of TELA
(USA)
(subsidiary)

- PhD, MS, BS (Hons)
- Over 50 years industry experience. Credited with the discovery of multiple large oil and gas fields in Northern America
- President of Eichen Petroleum Management, Inc. Manager of Avalon Oil and Gas Production Partnership
- Former CEO and Chairman of Hershey Oil Corp. He has also held senior positions with Exxon Mobil, a variety of exploration and production companies and was the founder of TKA Exploration Limited and OilTex International Limited
- Former Associate Professor of Geological Sciences at the University of Texas (Austin)

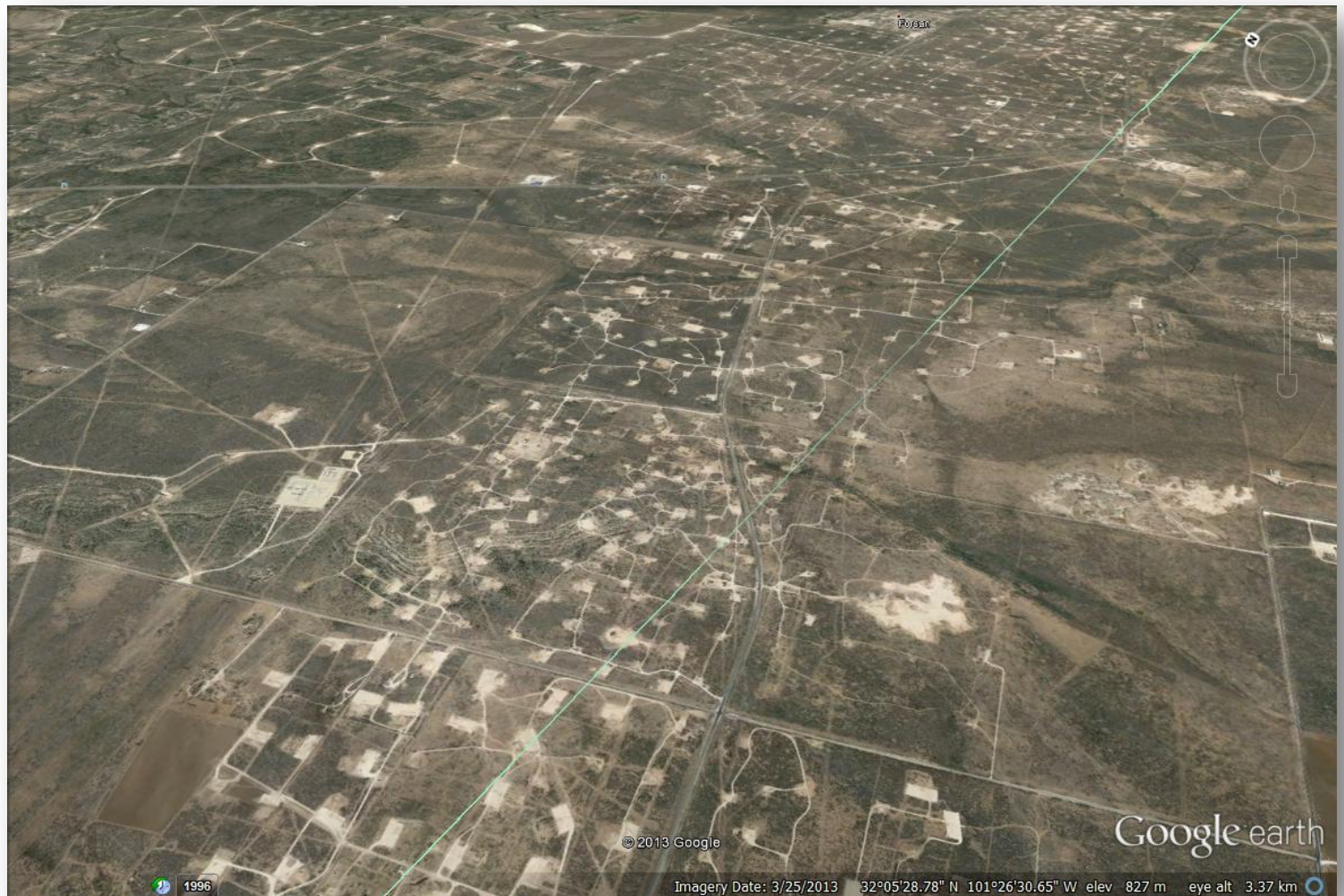
CLEARLY DEFINED STRATEGY

Target's strategy has three key elements which focus on proven oil basins, attractive well economics and partnerships.

Strategy

- Focus on US resource plays with attractive, repeatable well economics
- Acquire and develop assets in proven oil plays utilising advanced drilling and completion technologies
- Leverage strong relationships with local partners to expand portfolio in areas of interest

Aerial View of the Howard Glasscock Field, adjacent to Target's Permian Basin leases



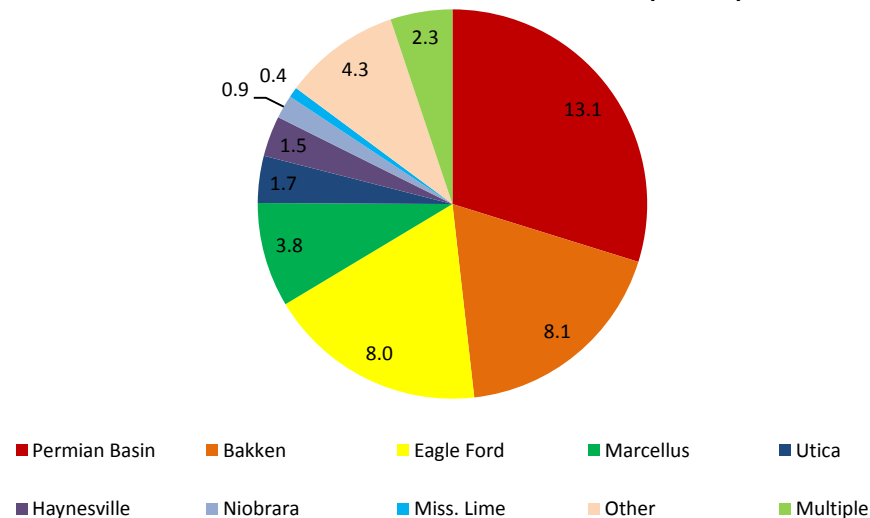
CLEARLY DEFINED STRATEGY – PLANNED DIVESTMENT

Target seeks to take advantage of the strong Permian Basin M&A market to divest Fairway in early 2015.

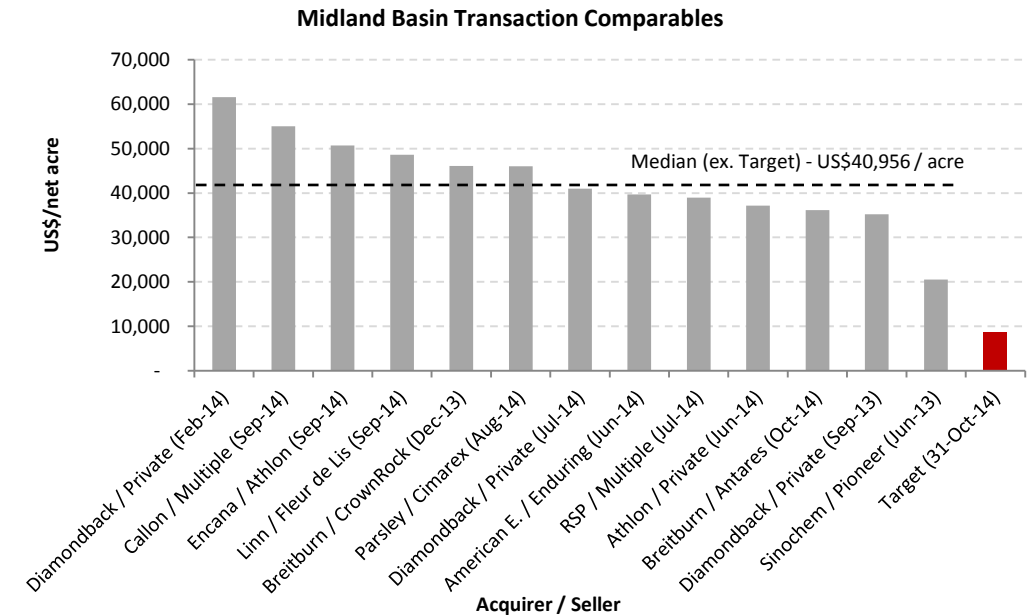
- Permian Basin is the largest US oil and gas M&A market, with US\$13.1bn of deals announced in the year to September 2014
- Recent deals in the Midland Basin have been completed on strong valuation metrics (over US\$40,000/acre)
- Target and partners in the Fairway Project have agreed to divest the asset in Q1 2015 and are close to appointing an experienced advisor
- March 2015 is the planned conclusion date of the sales process

Permian Basin dominates US Unconventional M&A activity

2014 Value of US Unconventional Deals (US\$bn)



Recent Permian Basin Transaction Metrics



1. Target's EV/ acre metric is calculated based on the closing share price on 31 October 2014 (A\$0.045) and using an AUD:USD exchange rate of 0.88. The calculated multiple does not include a premium for control, which may be realised in some of the other transactions listed.
2. All transaction metrics have been compiled using public filings

TARGET'S ASSETS

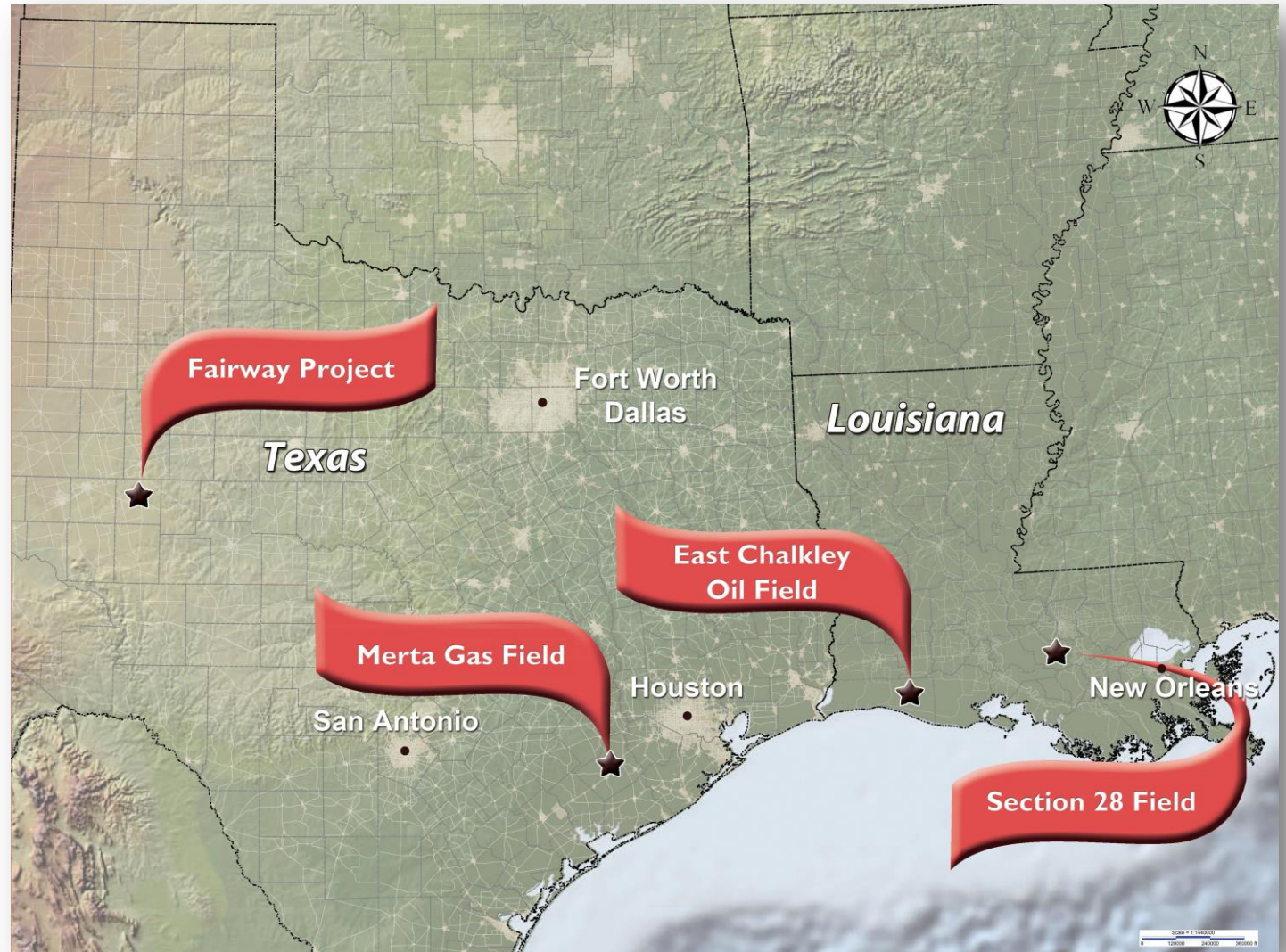
Oil tanks at East Chalkley

PRODUCING ASSETS IN TEXAS AND LOUISIANA

Active in West Texas and the Texas & Louisiana Gulf Coasts

Target Energy US Assets

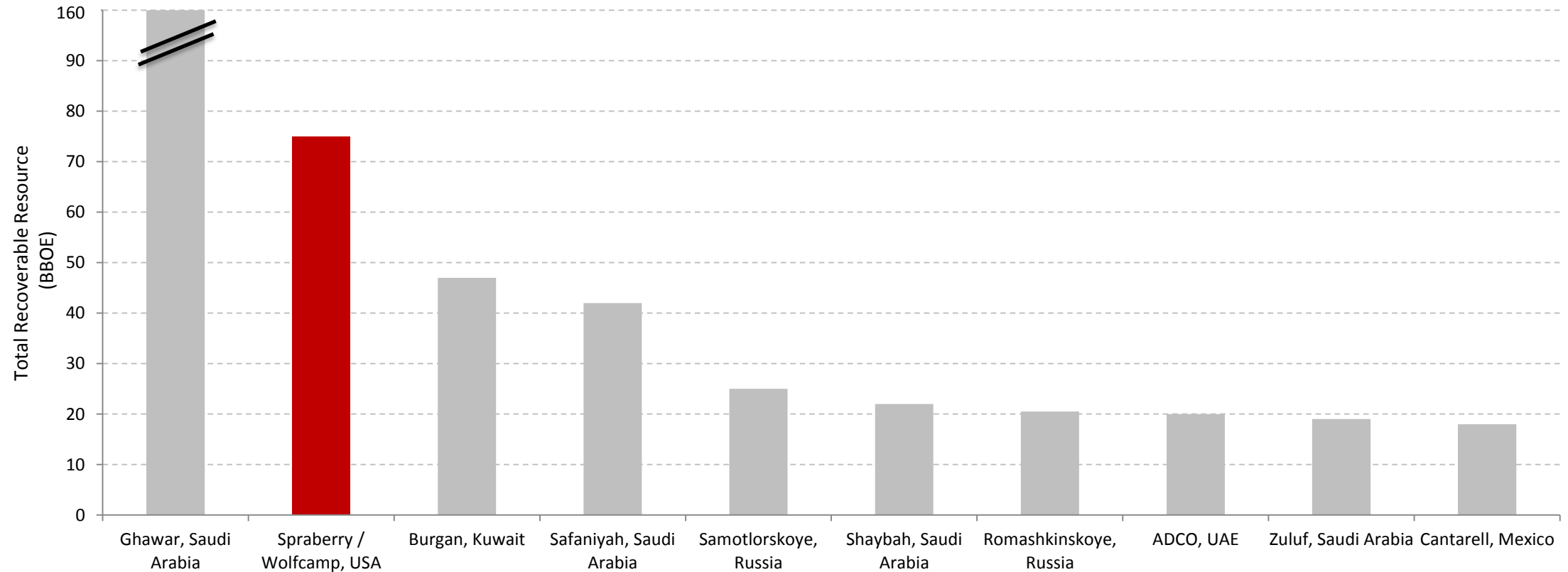
Section 28	▪ St Martin Parish, La
East Chalkley	▪ Cameron Parish, La
Merta	▪ Wharton Co, Tx
Fairway	▪ Howard County ▪ Glasscock County, Tx



WHY THE PERMIAN BASIN? – GO WHERE THE OIL IS

Spraberry / Wolfcamp field in the Permian Basin is the world's second largest oil field.

World's Largest Oil Fields (BBOE) ^{1,2}



Notes:

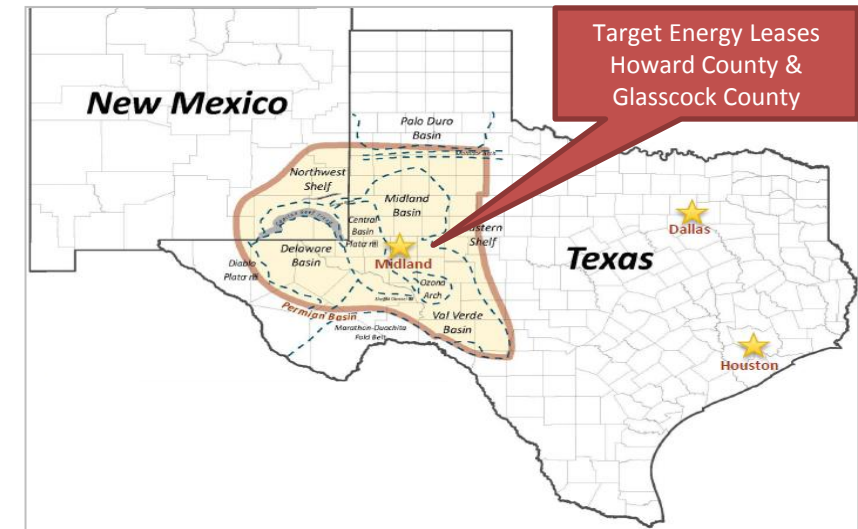
1. Recoverable resources as estimated by Pioneer Natural Resources (Spraberry / Wolfcamp) and Wood Mackenzie for all other fields.
2. Resources include estimated recoverable oil and gas for all fields.

PERMIAN BASIN

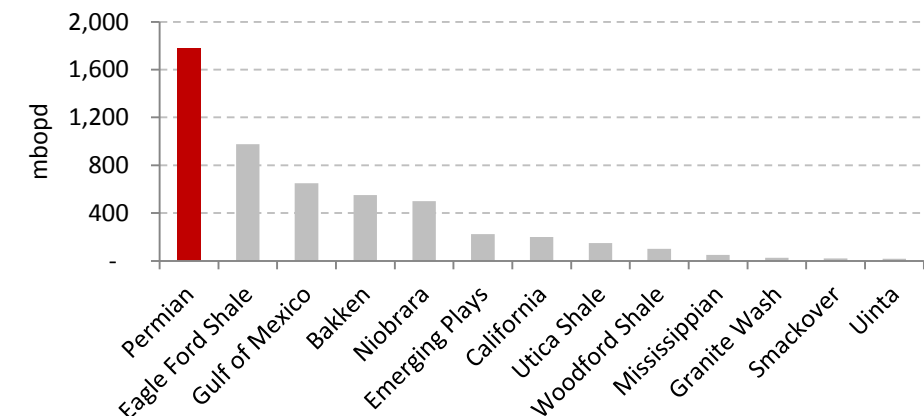
The Permian Basin is the most prolific and coveted onshore basin in the US.

- **Current daily production:** 1.3 million barrels of oil and 4 billion cubic feet of gas; more than 3 times Australia's oil output²
- **Oil production growth:** 1.8 mmbopd by 2016³
- **Relative growth:** oil production growth expected to be almost double the Eagle Ford Shale to 2018⁴
- **Gas quality:** gas produced is often liquids rich, attracting substantial premiums to the US 'dry gas' (methane) price
- **Reserve growth:** 29% of estimated US oil reserve growth in the US is expected to come from the Permian Basin⁶
- **Drilling activity:** 542 drilling rigs are operating in the Permian Basin, compared to Australia's total operating rig count of 21 rigs⁷
- **Corporate activity:** largest US onshore merger and acquisition (M&A) market in 2012 and 2013. Valuations are rising as resource plays are being de-risked⁸

Regional Map of Permian Basin ¹



Projected Oil Production Growth by US Play (2013 -2018)⁵



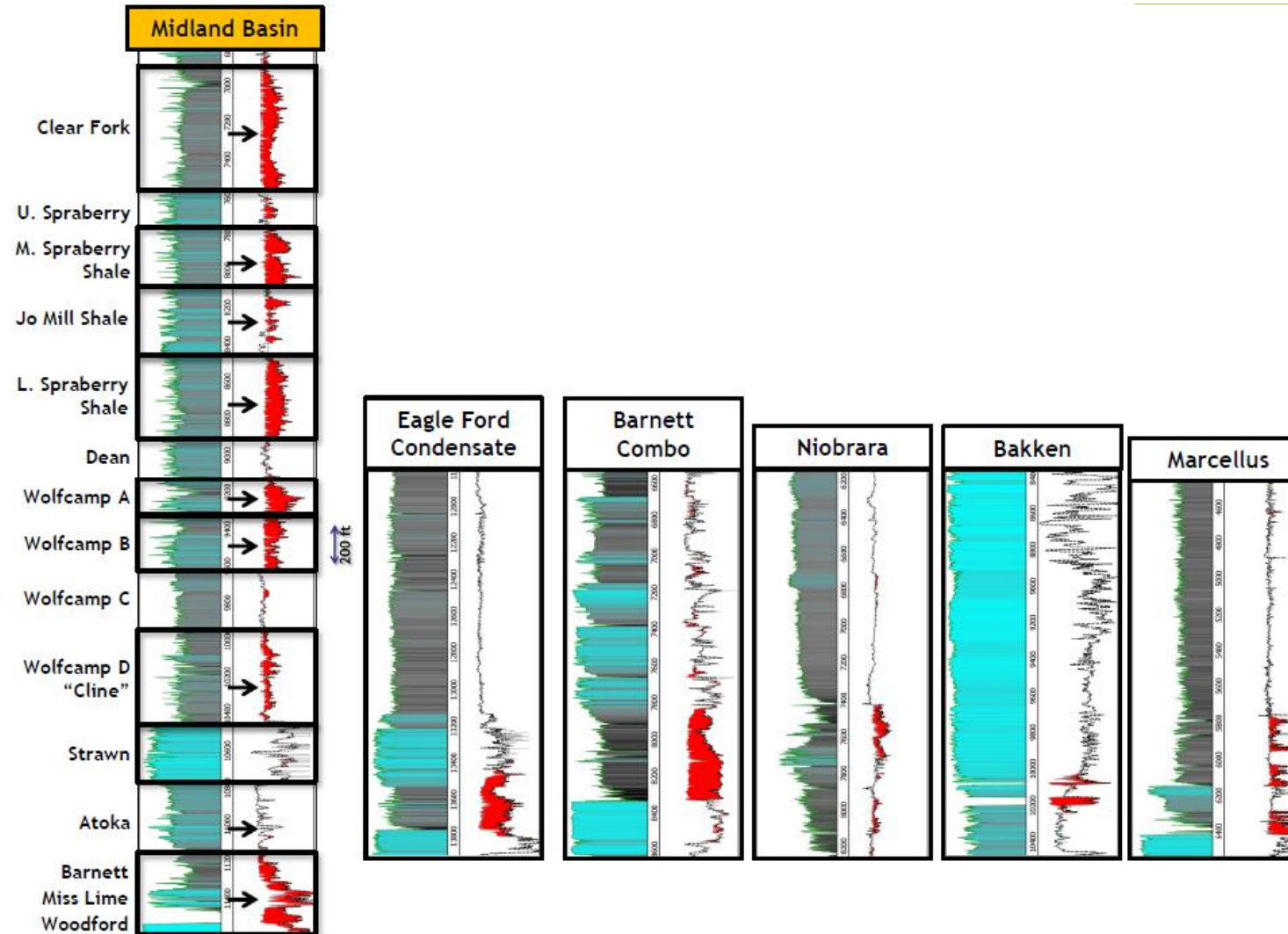
Notes:

1. Apache Energy
2. US EIA, HPDI, LLC, BP and APPEA - figures relate to 2012 production.
3. Bentek, University of Texas, APPEA estimates.
4. Bentek estimates.
5. Credit Suisse estimates.
6. North American Shale Quarterly.
7. Baker Hughes rig count (25 April 2014).
8. RBC Richardson Barr. US onshore M&A includes transactions over US\$100m.

STACKED PAY, THE KEY DIFFERENTIATOR

Stacked pay increases the volume of oil in place and reduces risk.

A comparison of resistivity logs in US shale oil plays



- **Stacked pay:** Midland Basin resistivity logs illustrate (in red) multiple hydrocarbon bearing zones (around ~3,500ft in gross pay)
- **Differentiator:** stacked zones sets the Midland Basin apart from other US shale oil plays
- **Greater oil-in-place:** the Wolfcamp and Spraberry shales in the Midland Basin have significantly more oil in place than other US shale oil plays ¹
- **Low risk:** multiple target zones reduce overall risk

Notes:

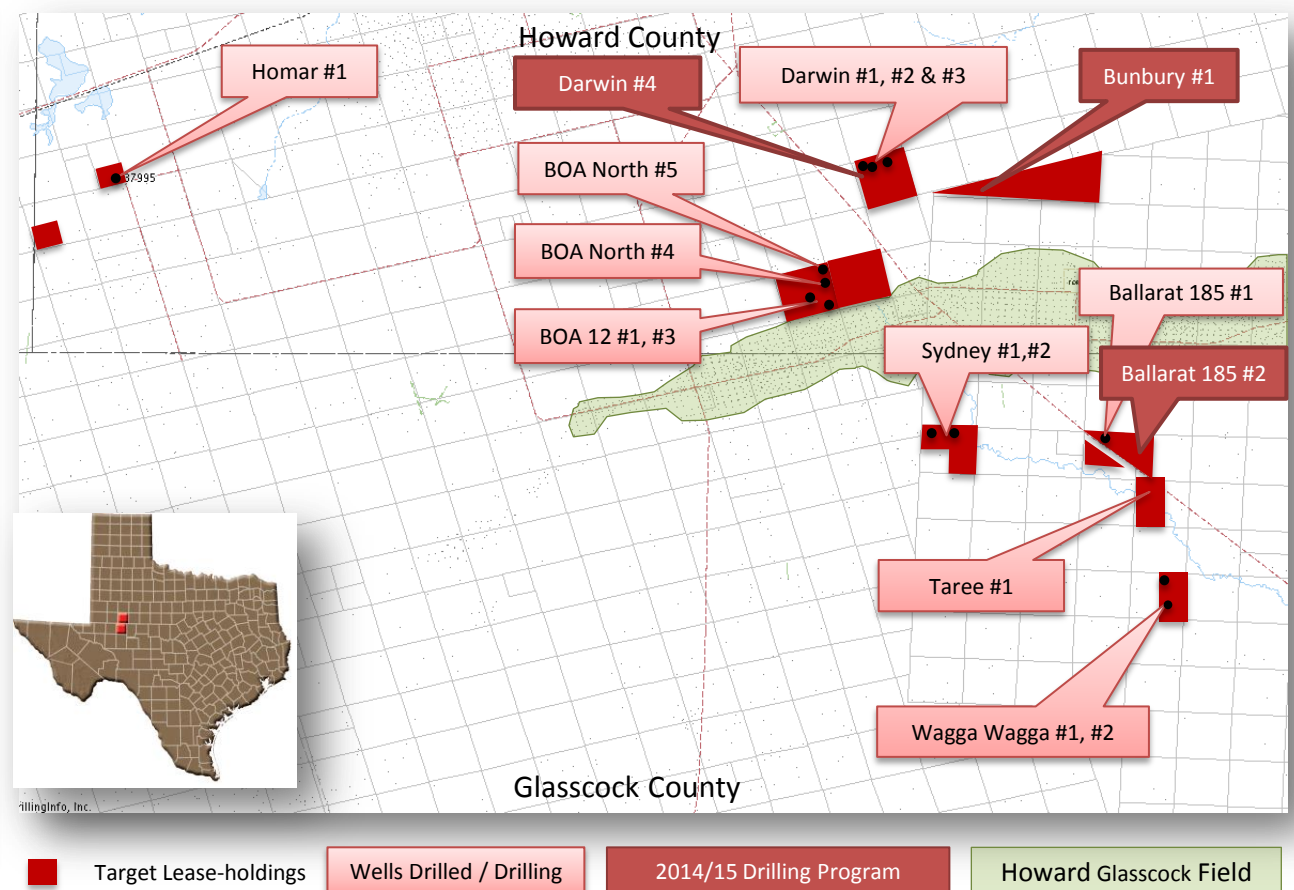
1. Pioneer Natural Resources

PERMIAN BASIN – FAIRWAY PROJECT

Target retains its focus on the Permian Basin focused company and is committed to expanding its high quality portfolio.

Map of Target's Fairway Project in the Midland Basin⁴

Location	▪ Howard & Glasscock Counties, Tx
Leaseholding	▪ 4,483 acres (gross) / 2, 479 acres (net)
Working Interest	▪ Average 55%
Operator	▪ Trilogy Operating Inc.
Gross Production	▪ 422 boepd (12 wells)
Net Production ¹	▪ 214 boepd (12 wells)
Net Reserves ²	<ul style="list-style-type: none"> ▪ 1P Reserves: 658mboe ▪ 2P Reserves: 876mboe ▪ 3P Reserves: 1,107mboe
Estimated Well Capex (100%) ³	▪ US\$1.8m per vertical well
Planned 2014/15 Work Program	<ul style="list-style-type: none"> ▪ Drilling program now underway ▪ Ongoing petrophysical analysis ▪ Additional leasing
Comments	▪ Target has up to 112 well locations on 40 acre well spacing



Notes:

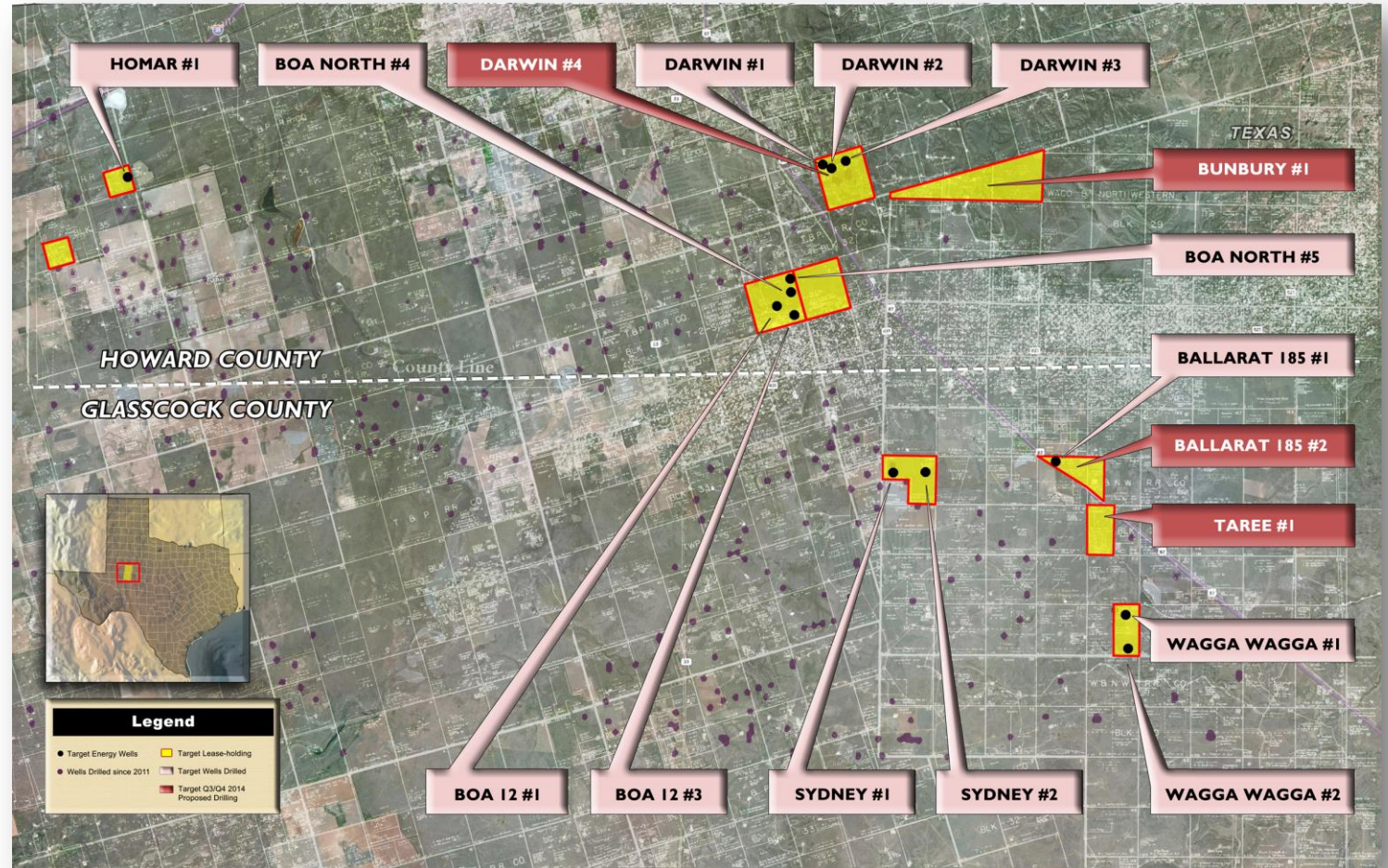
1. Average Daily Production during September quarter 2014 plus recent Ballarat 185 #1 production (ASX release 10 Nov 2014). Figures are net to Target's working interest but before royalties.
2. Reserves as at 30 June 2014. A full list of disclosures and risks related to reserves is detailed in ASX release on 5 September 2014. See Note 4 on page 3 of this presentation for additional disclosures relating to reserves.
3. Assumes completion in the Wolfberry with fracture stimulation.
4. DrillingInfo Aug 2014.

PERMIAN BASIN – FAIRWAY PROJECT

Prospectivity in the Permian Basin is evidenced by high levels of drilling activity.

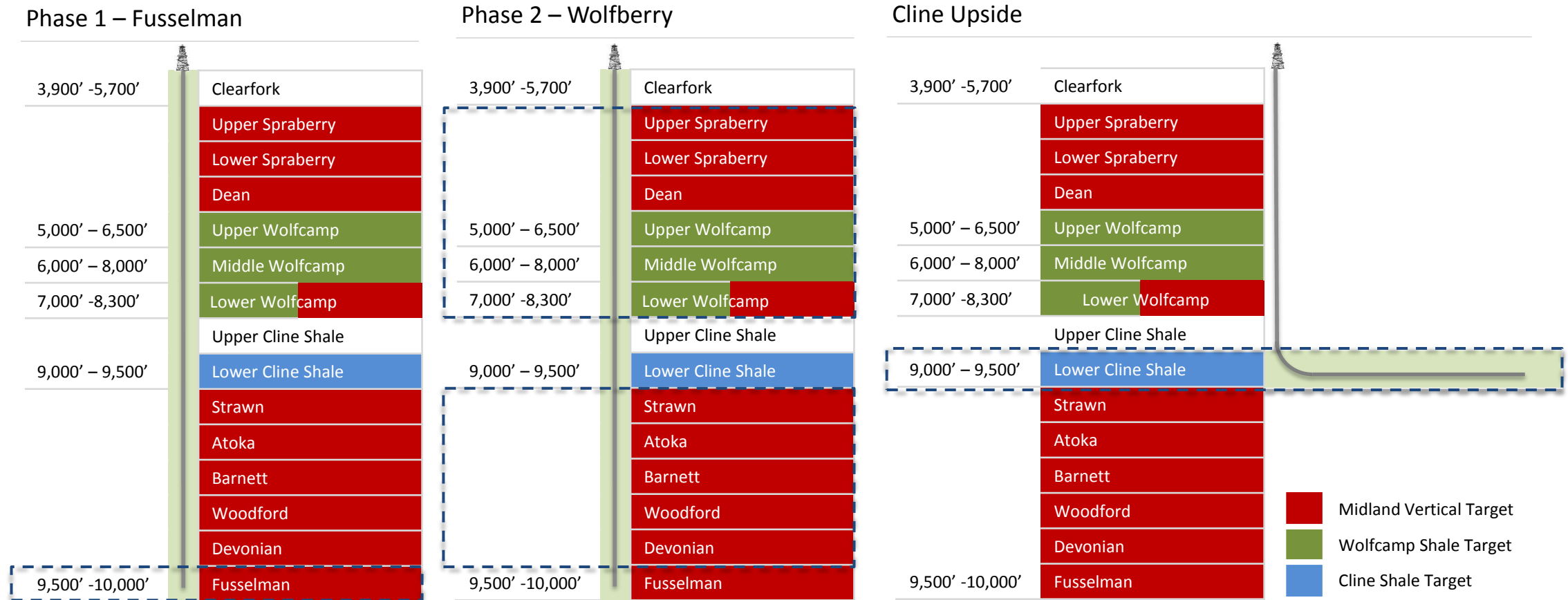
Map of Target's Fairway Project in the Midland Basin

Regional Activity	<ul style="list-style-type: none"> 2,914 new wells drilled below 6,000 ft in Howard and Glasscock Counties since Jan 2011.
Local Activity	<ul style="list-style-type: none"> 371 wells drilled below 6,000 ft just in the Fairway region in Howard and Glasscock Counties since Jan 2011 (right).
Target Energy	<ul style="list-style-type: none"> Ongoing drilling program with 14 wells drilled in Fairway region in Howard and Glasscock Counties Spudding imminent for next well (Darwin #4)



PERMIAN BASIN – FAIRWAY DEVELOPMENT PLAN

Multiple potential completions per well.¹



- Up to 110 well locations (40 acre spacing)
- Multiple completions per well¹
- Phase 1:** complete in the Fusselman conventional (carbonate) reservoir – strong IP rates, good EUR's and potential 5-6 year producing life
- Phase 2:** Fracture-stimulate relevant Wolfberry zones – 20+ years producing life
- Cline upside:** potential to drill laterals into the Cline Shale

Notes:

1. Multiple completions per well cannot be assured at every well location. Completions are subject to technical and commercial feasibility. No of wells refers to vertical wells only.

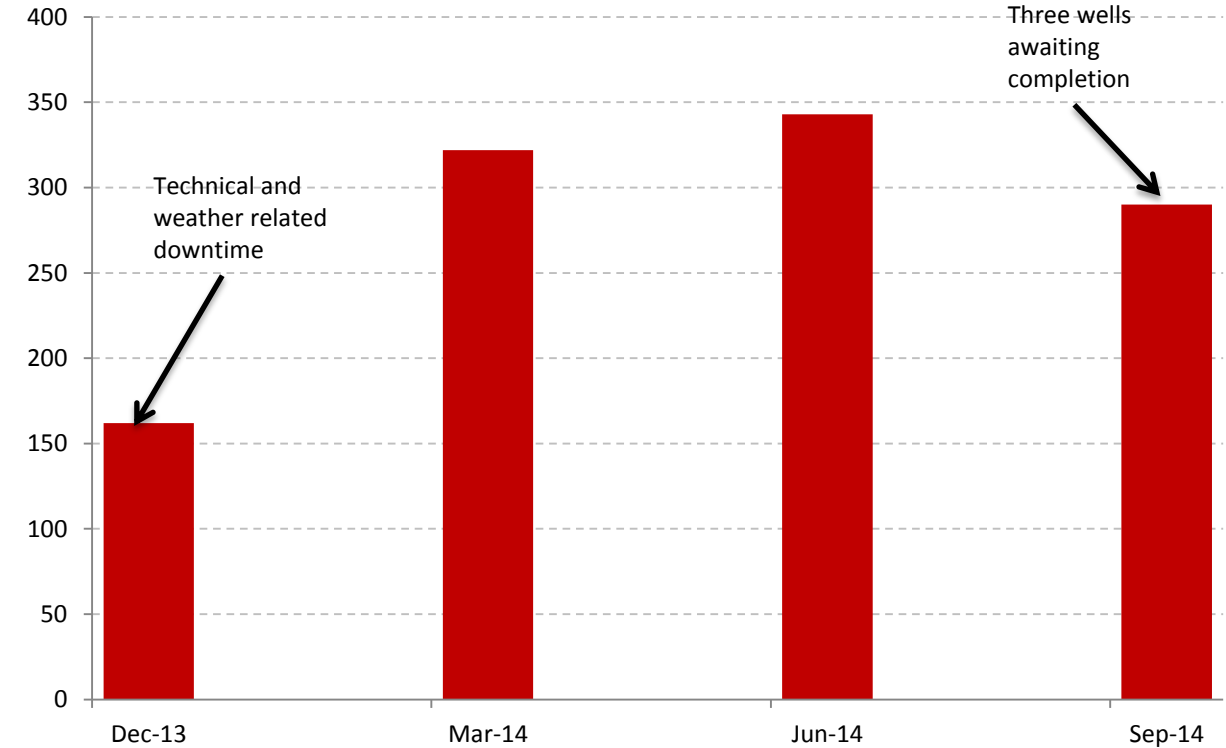
PERMIAN BASIN – FAIRWAY ACTIVITY

The accelerated pace of drilling is starting to show through increasing production figures.

Fairway Project Planned Activity 2014¹

Q1 2014	<ul style="list-style-type: none">✓ Wagga Wagga #1 online✓ Sydney #2 online✓ BOA 12 #3 online✓ BOA North #4 online
Q2 2014	<ul style="list-style-type: none">✓ Wagga Wagga #2 online✓ Homar #1 online
Q3 2014	<ul style="list-style-type: none">✓ BOA North #5 - awaiting completion✓ Taree 193 #1 - awaiting completion
Q4 2014	<ul style="list-style-type: none">✓ Ballarat 185 #1 fraced – put on pump✓ Darwin #4
H1 2015	<ul style="list-style-type: none">▪ Bunbury #1▪ Ballarat 185 #2
Q1 2015	<ul style="list-style-type: none">▪ Proposed Divestment

Fairway Project Gross Quarterly Production FY14 (BOEPD)



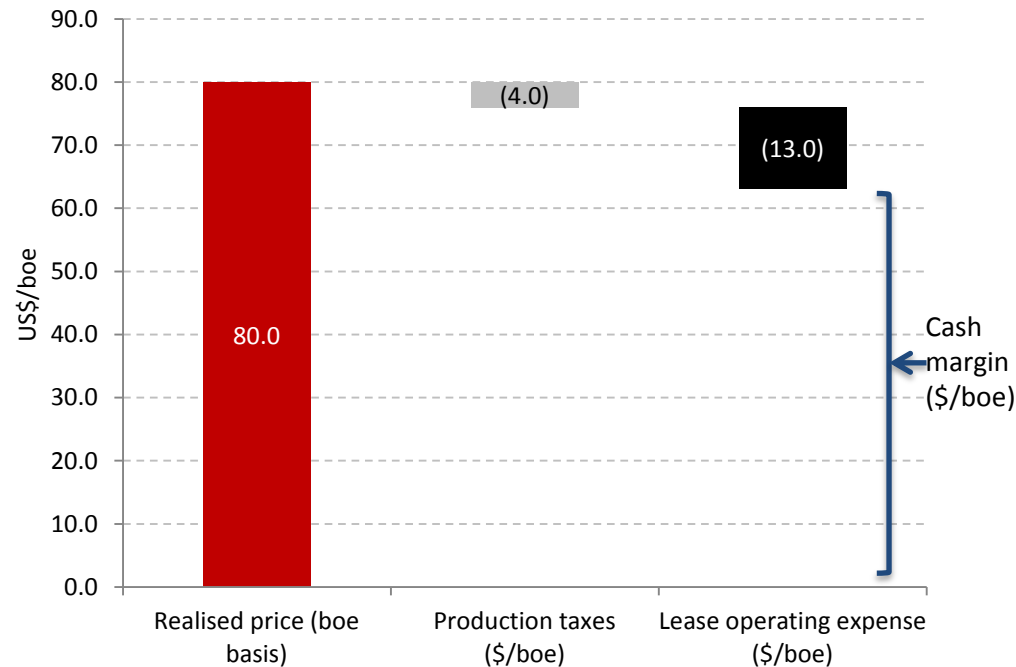
Notes:

1. Preliminary planning: number, location and order of proposed wells is subject to change.

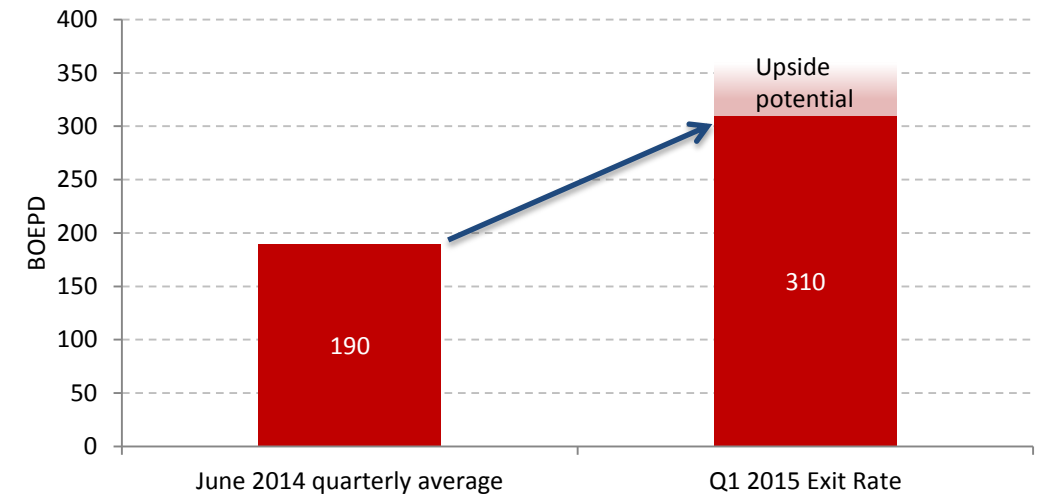
PERMIAN BASIN – FAIRWAY PRODUCTION GROWTH

Cash margins are strong at Fairway and production is estimated to rise c.160% by the end of Q1 2015.

Average Prices, Taxes, LOE's and Cash Margins (\$/boe) ³



Estimated Average Daily Net Production^{1,2}



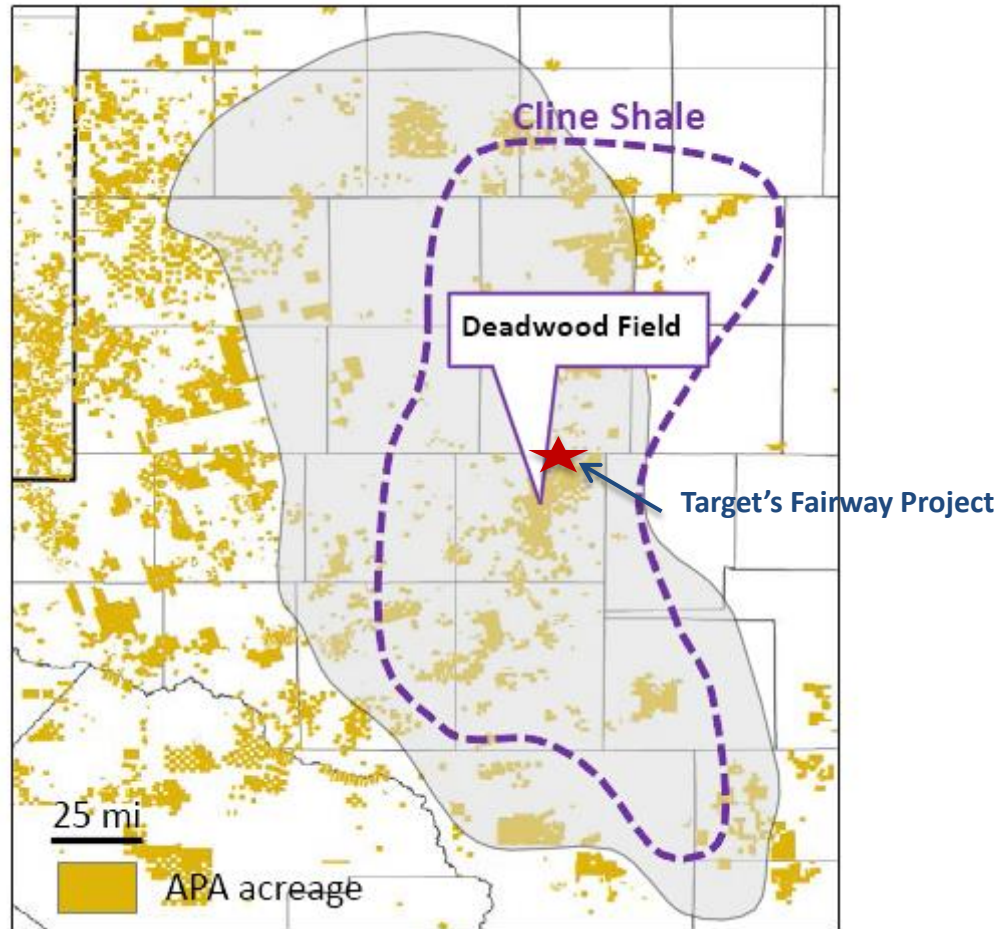
Notes:

1. Production estimates are net to Target's working interest but prior to royalty payments to landowners. June 2014 quarterly average boepd includes a period prior to the sale of an interest in Fairway to Victory Energy Inc., where Target held a c.60% WI in Fairway. Target's current Fairway WI is c.55%.
2. Target internal estimates. CY14 average net daily production estimates are based on: 10 more wells being drilled in the Fairway project, a mid case type curve for all Fairway wells.
3. Averages are calculated on the trailing 6 months to August 2014, excluding June 2014 due to one-off adjustments associated with a sale of Fairway interests to Victory Energy Inc.

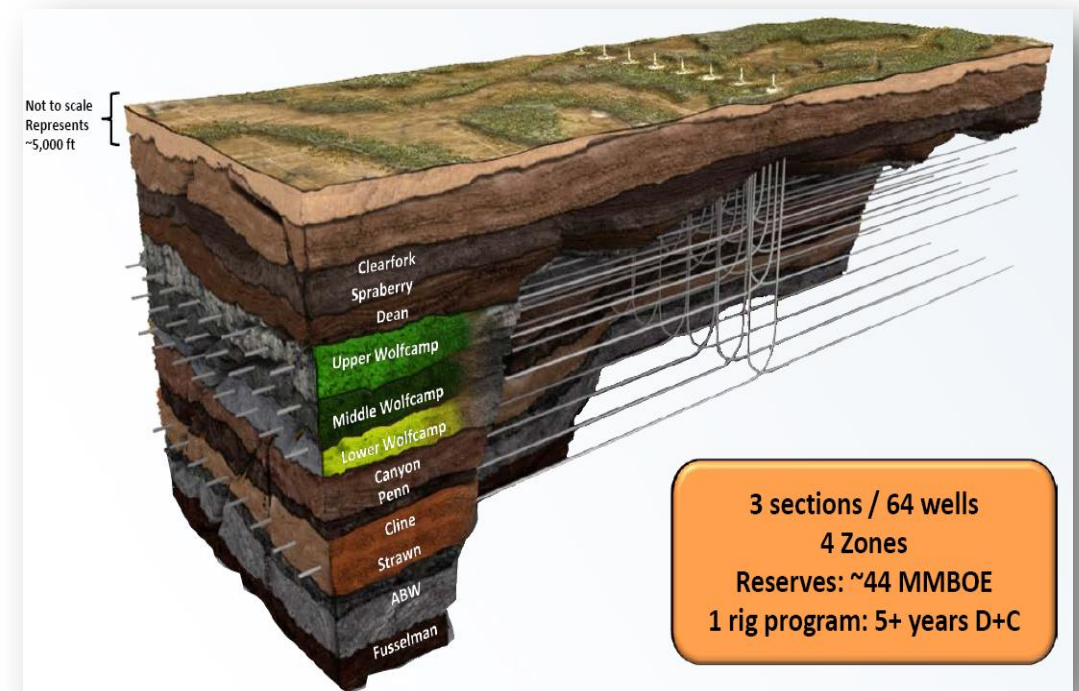
PERMIAN BASIN – SHALE PLAYS DRIVING GROWTH

Fairway is positioned in centre of two active shale plays.

Map of Apache's Permian Basin Interests¹



Execution - Pad Drilling Example (courtesy Laredo Petroleum)²



Notes:

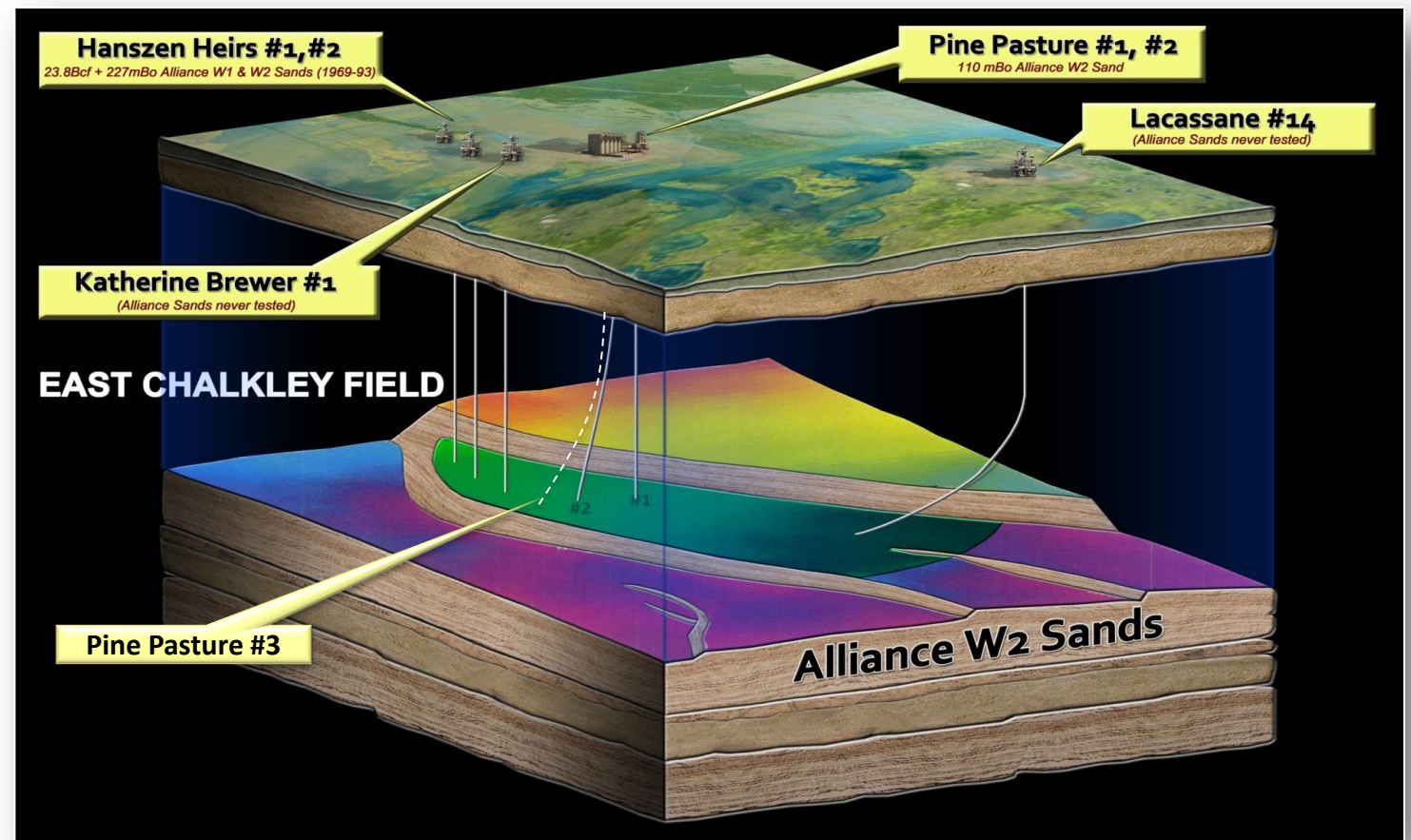
1. Apache Energy Corporation
2. Reserves estimate shown is derived by Laredo and is indicative of results that may be achieved from a 64 well program on their lease-holdings. Target has not made any assessment of horizontal drilling potential in it's Fairway project.

OTHER ASSETS - EAST CHALKLEY FIELD

Partners plan to increase oil recovery through a waterflood.

Acres Held	<ul style="list-style-type: none"> 714 gross / 250 net
Working Interest	<ul style="list-style-type: none"> 35%
Operator	<ul style="list-style-type: none"> Magnum Hunter Resources
Gross Production ¹	<ul style="list-style-type: none"> Wells shut-in awaiting workover
Net Reserves ²	<ul style="list-style-type: none"> 1P Reserves: 30.8mboe 2P Reserves: 66.0mboe 3P Reserves: 110.6mboe 3C Resources: 861.8mbo
Estimated well capex	<ul style="list-style-type: none"> US\$3.0m per deviated well (drilled and completed)
Work Program	<ul style="list-style-type: none"> Field workover (Q4 2014) Potential for waterflood
Comments	<ul style="list-style-type: none"> Potential to drill additional producing wells to maximise recovery

Schematic of the East Chalkley Field, Cameron Parish



Notes:

1. Target's wells were shut-in during the last quarter awaiting work overs.
2. Reserves as at 30 June 2014. A full list of disclosures and risks related to reserves is detailed in ASX release on 5 September 2014. See Note 4 on page 3 of this presentation for additional disclosures relating to reserves.

CORPORATE

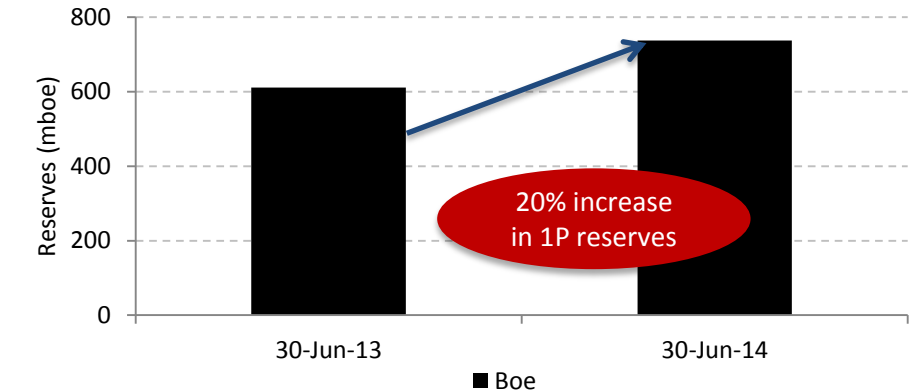
RESERVES & RESOURCES

2014 Reserves assessment has increased Target's 1P reserves by 20%. Oil constitutes 66% of 1P and 2P reserves.

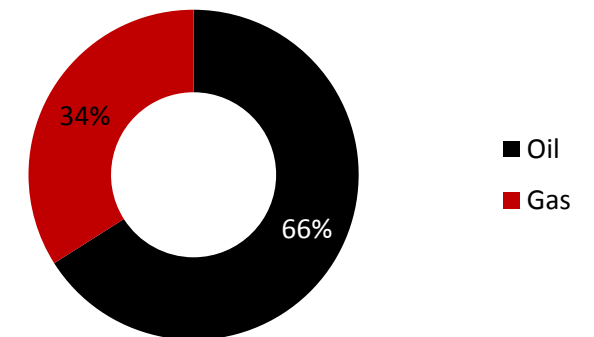
Target's Net Reserve & Resource Position¹

Category	Net Reserves & Resources		Barrels of Oil Equivalent
	Oil (mbbls)	Gas (mmscf)	BOE (mboe)
Proved Developed Producing (PDP)	101.9	322.3	155.6
Proved Developed Not Producing (PDNP)	29.1	192.2	61.2
Proved Undeveloped (PUD)	356.2	964.5	517.0
Total Proved Reserves (1P)	487.2	1479.0	733.7
Probable	173.8	534.7	262.9
Total Proved & Probable Reserves (2P)	661.0	2013.7	996.6
Possible	188.1	604.4	288.8
Total Proved, Probable & Possible Reserves (3P)	849.1	2618.0	1285.4
Low Estimate Contingent Resources	-	-	-
Best Estimate Contingent Resources	334.3	0.0	334.3
High Estimate Contingent Resources	527.5	0.0	527.5
Total Contingent Resources (3C)	861.8	0.0	861.8
Total Reserves & Resources	1,710.8	2,618.0	2,147.2

Growth in 1P Reserves



Composition of 2P Reserves



Notes:

1. Reserves as at 30 June 2014. A full list of disclosures and risks related to reserves is detailed in ASX release on 5 September 2014. See Note 4 on page 3 of this presentation for additional disclosures relating to reserves.

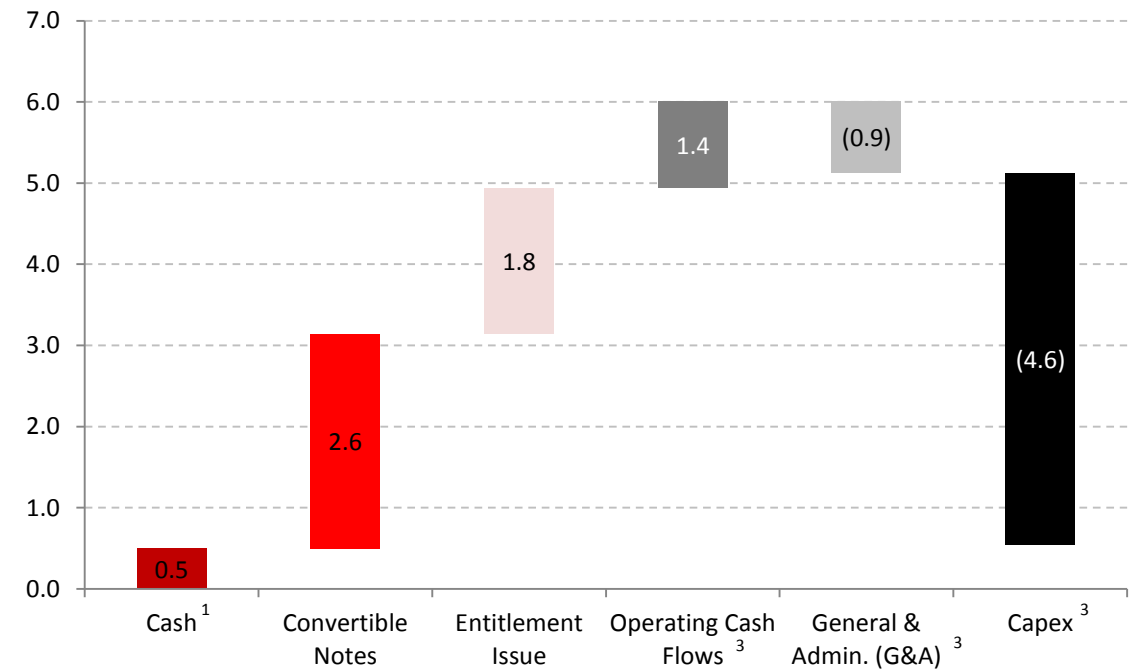
CASH FLOWS – FUNDED FOR DRILLING

Target has successfully raised A\$5m to fund Fairway drilling operations to our planned point of divestiture in early 2015.

Comments

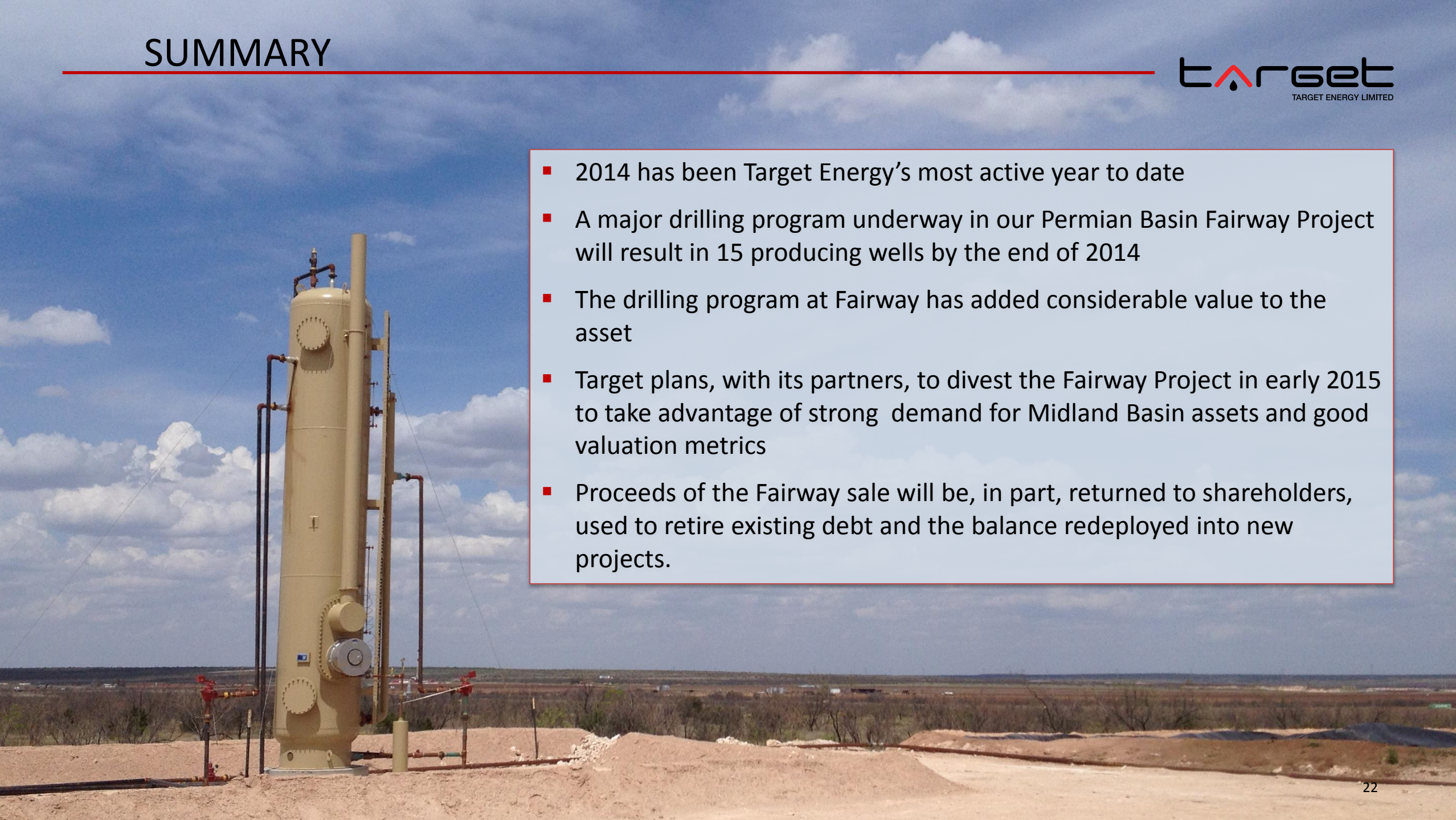
- **Successful capital raising:** A\$5.0m has been raised to fund the Fairway drilling program to the planned point of divestment in early 2015
- **Operating cash flows:** expected to rise materially as new wells are placed on stream
- **G&A costs:** very modest cost base covered by after tax free cash flows
- **Alignment:** low salary costs (G&A costs) and high share ownership of Management and Directors creates alignment with shareholders

Projected Cashflow Waterfall, October to March 2015 (US\$m)²



Notes:

1. Cash as at October 2014
2. All AUD figures converted to USD at AUD:USD 0.88
3. Target internal estimates using assumptions on page 23.

- 
- 2014 has been Target Energy's most active year to date
 - A major drilling program underway in our Permian Basin Fairway Project will result in 15 producing wells by the end of 2014
 - The drilling program at Fairway has added considerable value to the asset
 - Target plans, with its partners, to divest the Fairway Project in early 2015 to take advantage of strong demand for Midland Basin assets and good valuation metrics
 - Proceeds of the Fairway sale will be, in part, returned to shareholders, used to retire existing debt and the balance redeployed into new projects.

DEFINED TERMS, ASSUMPTIONS AND RISKS

DEFINED TERMS

- “\$” or “US\$” means United States (US) dollars, unless otherwise stated.
- “B” or “b” prefix means billion
- “bbl/s” means barrel/ s
- “bopd” or “boepd” means barrels of oil per day and barrels of oil equivalent per day, respectively
- “boe” means barrels of oil equivalent. Target reports boe using a gas to oil conversion based on equivalent thermal energy , i.e. 6000 cubic feet of gas = 1 barrel of oil
- “IP” or “IP rate” means the initial production rate
- “IRR” is the internal rate of return
- “EUR” means estimated ultimate recovery – the recoverable hydrocarbons over a well’s producing life
- “M” or “m” prefix means thousand
- “mcf/gpd” means thousand cubic feet of gas per day
- “MM” or “mm” prefix means million
- “NGL” means natural gas liquids.
- “NRI” means net revenue interest (after deduction of royalties)
- “pd” or “/d” suffix means per day
- “PV10” or “NPV10” means, unless otherwise stated, the net present value of future net revenue, after deductions for operating and capital expenses, production taxes and ad valorem taxes, but before corporate income tax and corporate overheads, using a real, pre-tax discount rate of 10%.
- “scf” means standard cubic feet
- “WI” means working interest within leases

ASSUMPTIONS FOR WELL ECONOMICS

- Type curves are estimated using data from Target’s existing producing wells and offset wells. The type curves represent what Target believes to be average type curves and are not representative of the best or worst type curves.
- Fusselman type curves assume the wells are placed on pump and exhibit a low rate of decline before water break through. This profile has been exhibited by offset wells drilled by Target’s operator.
- Oil prices and gas prices are based on a the WTI Crude Oil Benchmark and the Henry Hub Gas Benchmark. Pricing adjustments are made to these benchmark prices to account for quality, transportation fees, marketing bonuses and regional price differentials. Three different oil prices scenarios have been presented. In each case the oil price is expected to be flat over the duration of the well’s producing life at either \$80/bbl, \$90/bbl or \$100/bbl. Benchmark gas prices are estimated as being flat at \$4.0/mscf under all scenarios.
- Total capex is estimated at \$1.7m for a Fusselman well, \$2.1m for a Wolfberry well and \$2.4m for a Wolfman well. Opex is assumed to be \$5,000/well/month.
- Other economic parameters including, but not limited to: percentage of oil production, royalties, production taxes and working capital movements are based on Target’s current operating parameters.

ASSUMPTIONS FOR EAST CHALKLEY FIELD NPV (10%)

- Type curves are estimated using data from Target’s existing producing wells and offset wells .
- A flat oil and gas price of \$90/bbl and \$4/mscf has been used for the East Chalkley Field NPV (10%).
- The ‘most likely’ case assumes drilling 4 producing wells and 2 injectors over 2 years. The ‘upside’ case assumes drilling 7 producing wells and 3 injectors over 3 years.
- Well capex is estimated at \$3.0m for a deviated well. Opex is assumed to be \$7,500/well/month.
- Other economic parameters including, but not limited to: percentage of oil production, royalties, production taxes and working capital movements are based on Target’s current operating parameters.

KEY RISKS ASSOCIATED WITH WELL ECONOMICS AND EAST CHALKLEY FIELD NPV (10%)

- Benchmark oil and gas prices may change.
- Well production performance may differ from estimated well performance.
- Target’s current operating parameters (listed above) may not be representative of future operating parameters .
- A number of factors could cause actual results to differ materially from the projections, please see page 2 for disclosure on forward looking statements.

TARGET ENERGY LIMITED

USA

1900 ST JAMES PLACE, SUITE 425

HOUSTON, TEXAS 77056

T: +1 713 275 9800 | F: +1 713 275 0999

AUSTRALIA

6 RICHARDSON STREET, SUITE 5

WEST PERTH, WA 6005

T: +61 8 9476 9000 | F: +61 8 9476 9099

TARGETENERGY.COM.AU | TARGETENERGYUSA.COM

