



**Annual General Meeting Presentation
25 November 2014**

(ASX: BBR) High-Grade Graphite in Sri Lanka

Disclaimer and Forward Looking Statements

Securities

This Presentation does not constitute an offer that is capable of acceptance nor is it a disclosure document under the Corporations Act. This Presentation is intended for recipients collectively and does not take into account the investment objectives, financial situation and particular needs of any particular person. It does not constitute financial product advice. In all cases, recipients of this Presentation should carry out their own independent inquiries and investigations into, and independent assessment and review of Bora Bora Resources Limited and the information contained in this Presentation as well as forming their own views on all general economic, commercial, financial, technological and regulatory risks that may be associated with an investment in Bora Bora Resources Limited.

Forward Looking Statements

This Presentation contains forward looking statements. These forward looking statements are based on Bora Bora Resources Limited's current intentions, plans, expectations, assumptions and beliefs. These forward looking statements involve known and unknown risks, key considerations, uncertainties, assumptions and other important factors that could cause the actual results, performance or achievements of Bora Bora Resources Limited to materially differ from expected future results, performance or achievements expressed or implied in such statements. These statements reflect the views held at the date of this presentation. None of Bora Bora Resources Limited's corporate group members, any directors, officers, employees or advisers of those entities nor any other person gives any representation, assurance, or guarantee that the events expressed or implied in any forward looking statements in this presentation will actually occur or that other events will not occur and you are cautioned not to place undue reliance on such forward looking statements.

Competent Persons Statement

The information contained in this report which relates to Exploration Results and Mineral Resources is based on information compiled by Mr Andrew Johnstone who is an Officer of the Company. Mr Johnstone is a Member of the Australian Institute of Geoscientists. Mr Johnstone has sufficient experience which is relevant to the style of mineralisation and type of deposit under consideration and to the activity which he is undertaking to qualify as a Competent Person as defined in the 2012 Edition of the 'Australasian Code for Reporting of Exploration Results, Mineral Resources and Ore Reserves'. Mr Johnstone consents to the inclusion in this report of the matters based on his information in the form and context in which it appears.

Executive Summary

- Graphite explorer building pipeline of high-grade graphite projects (90%-99+ TGC) in Sri Lanka
- Opportunity to become the largest vein graphite producer globally.
- Flagship Matale/Kurunegala project surrounds historic Kahatagaha Kolongaha Graphite Mine (KKGM)
- KKGM operated since 1872 and produced more than 300,000 tonnes of high-grade graphite mined.
- 3 out of 4 of Sri Lanka's producing mines in Matale/Kurunegala area.
- Goal to develop down stream processing capabilities and alliances.



Corporate Snapshot

Bora Bora Resources is the 75% owner of Plumbago Lanka (PvT) Ltd, an entity that holds 6 graphite exploration projects in Sri Lanka.

Corporate Snapshot

Ordinary Shares	34,970,000
Options	8,900,000
Performance Rights	5,000,000
Share Price as at 24/11/14	24.5 cents
Market Capitalisation	\$8.6 Million
Cash	\$4.2 Million

Board of Directors

Chris Cowan – Executive Director

Patrick Ford – Non-Executive Chairman

Andrew Johnstone – Non-Executive Director

Nathan Young – Non-Executive Director

Nelson Reynolds – Non-Executive Director

Major Shareholders

Chris Cowan	13.7%
Och-Ziff	5.9%
Top 20	46.9%

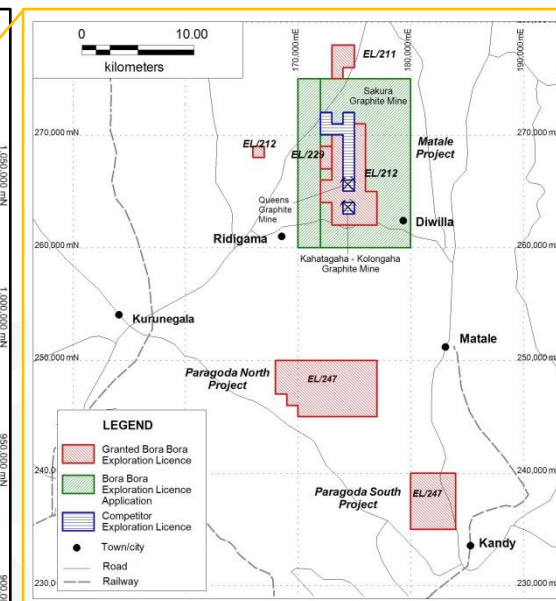
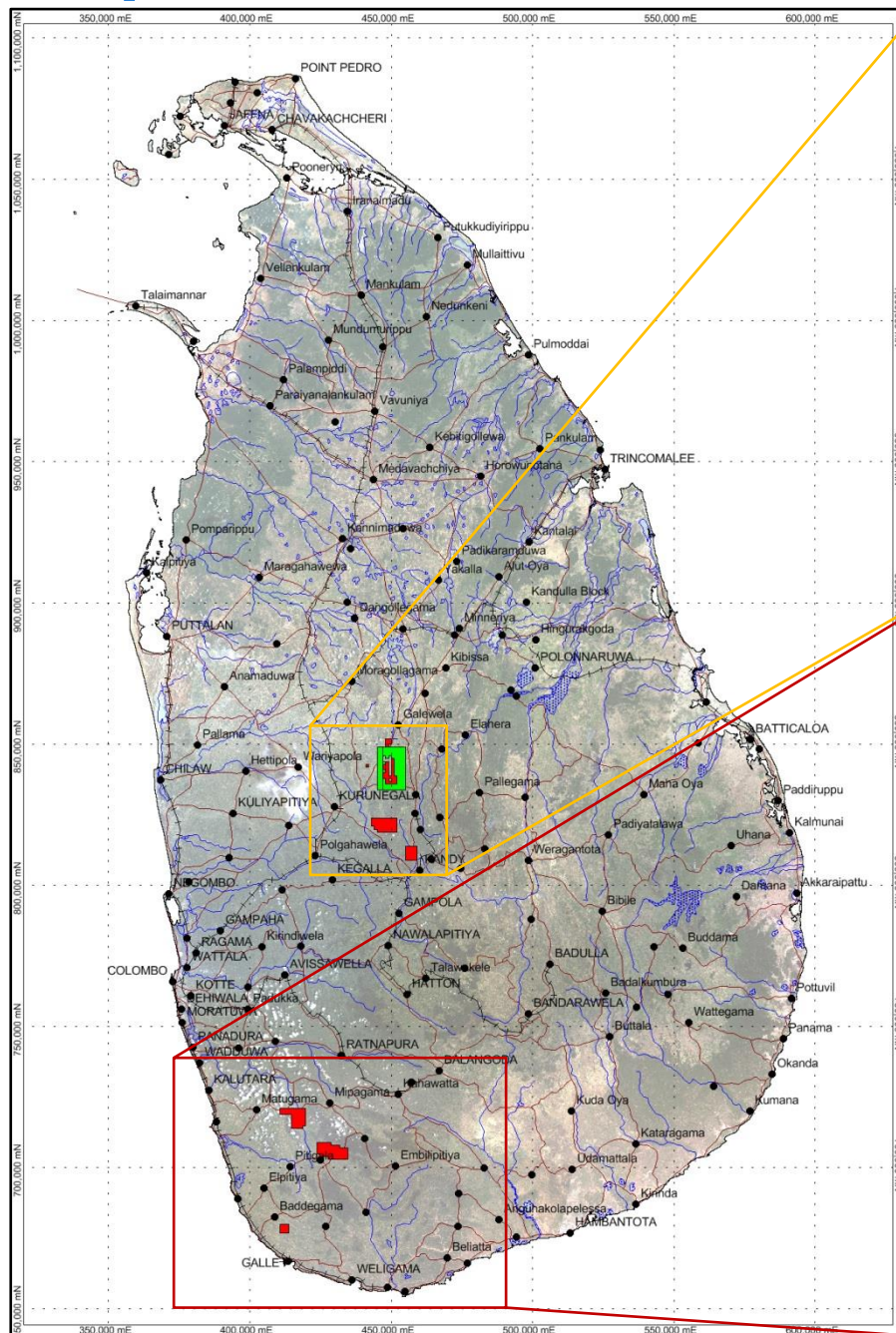


Graphite and Graphene

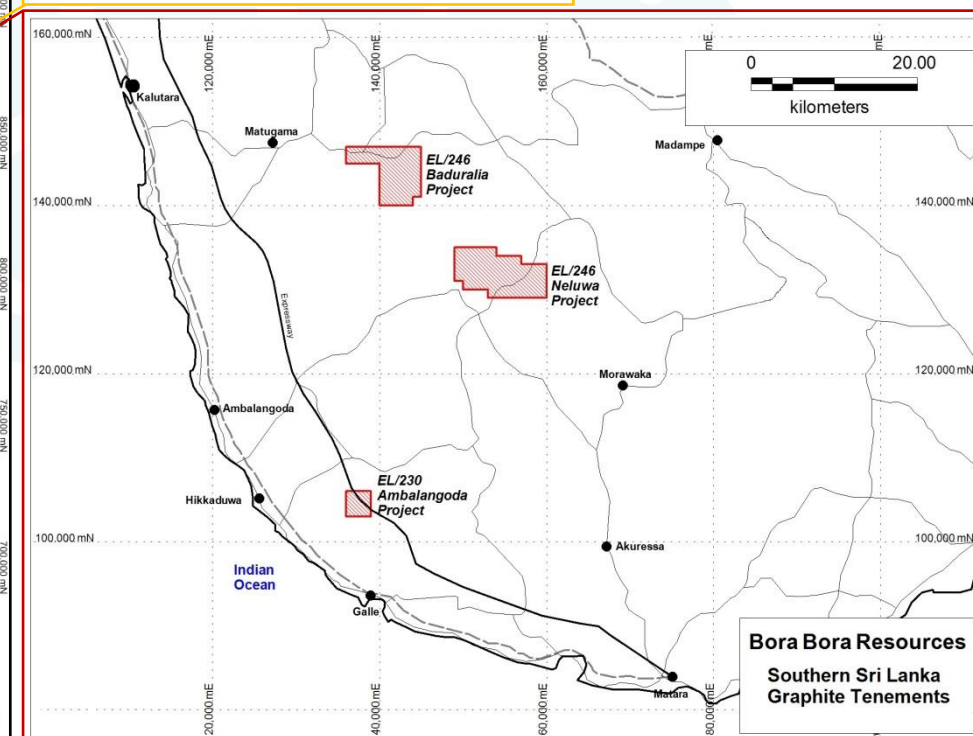
- Projects in best region of Sri Lanka for highest grade and purest graphite.
- Planned association with RS Mines, BBR will also process graphite into graphene oxide.
- Sri Lankan vein graphite commands a price premium.
- Partnership with RS Mines to secure offtake agreements for the commercial supply of high purity graphite and graphene oxide.
- MOU with Monash University to explore commercialization of several graphene patents and develop technology for graphene super capacitors and other applications.



Map of Tenements

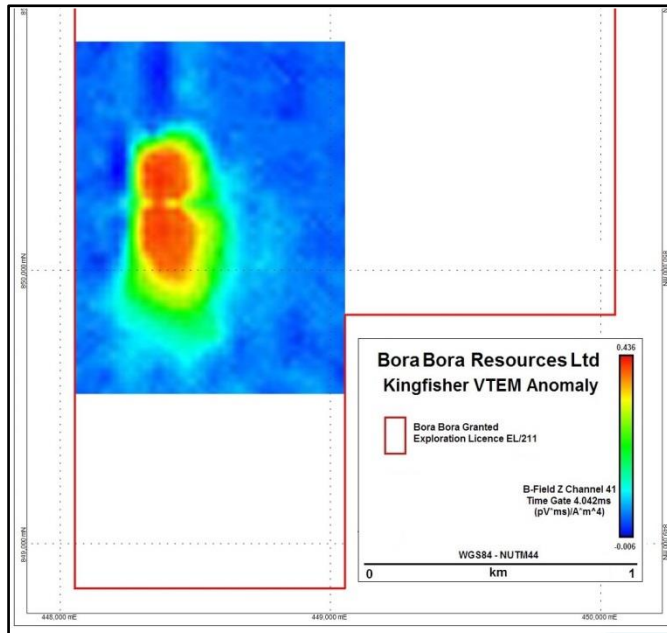


- 6 projects in Sri Lanka
 - Matala/Kurunegala
 - Paragoda North
 - Paragoda South
 - Baduraliye
 - Neluwa
 - Ambalangoda
- Matala/Kurunegala most advanced
- All projects close to infrastructure, sealed roads, rail and major ports

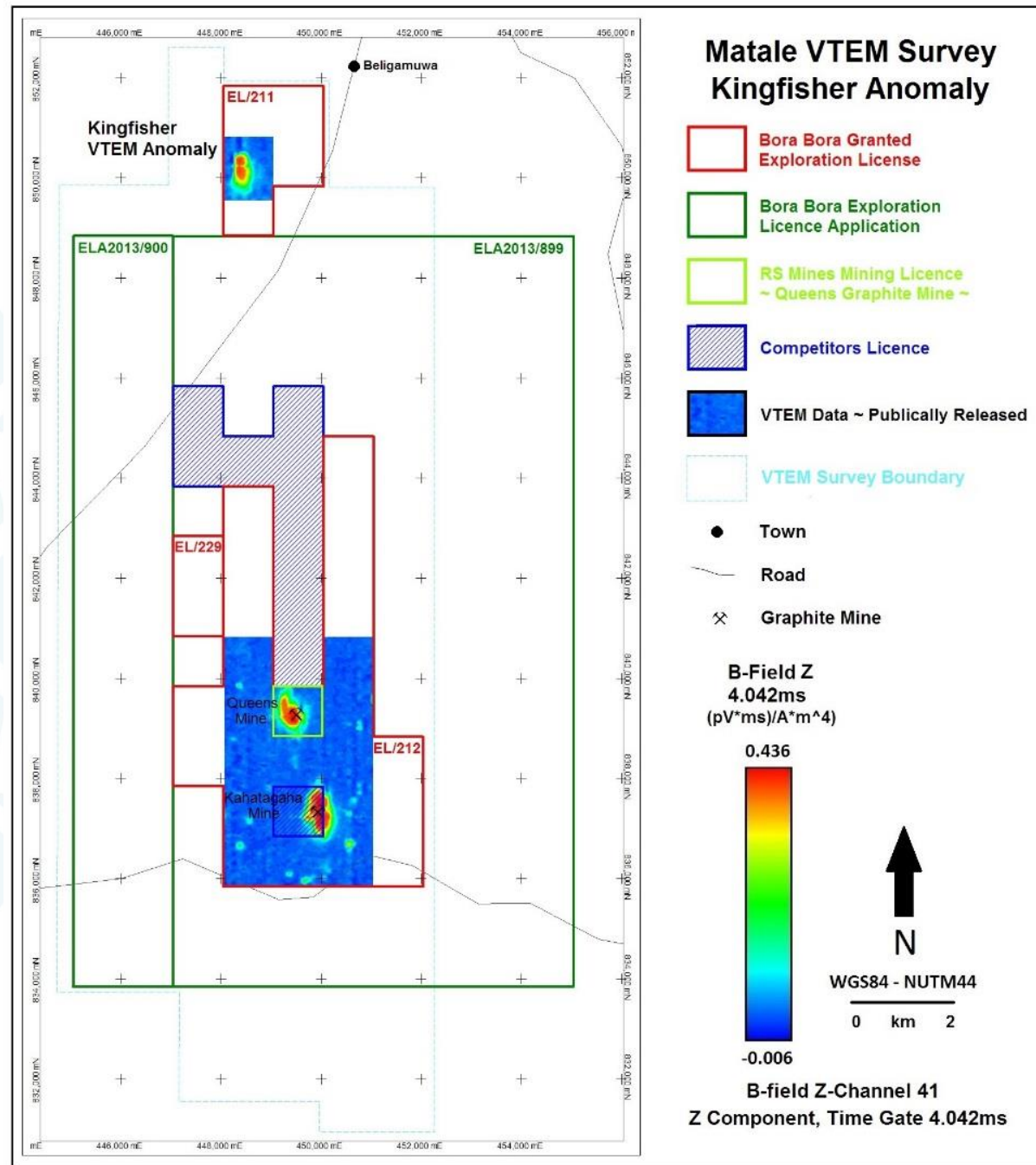


Bora Bora Resources
Southern Sri Lanka
Graphite Tenements

Matale/Kurunegala Project, VTEM Survey

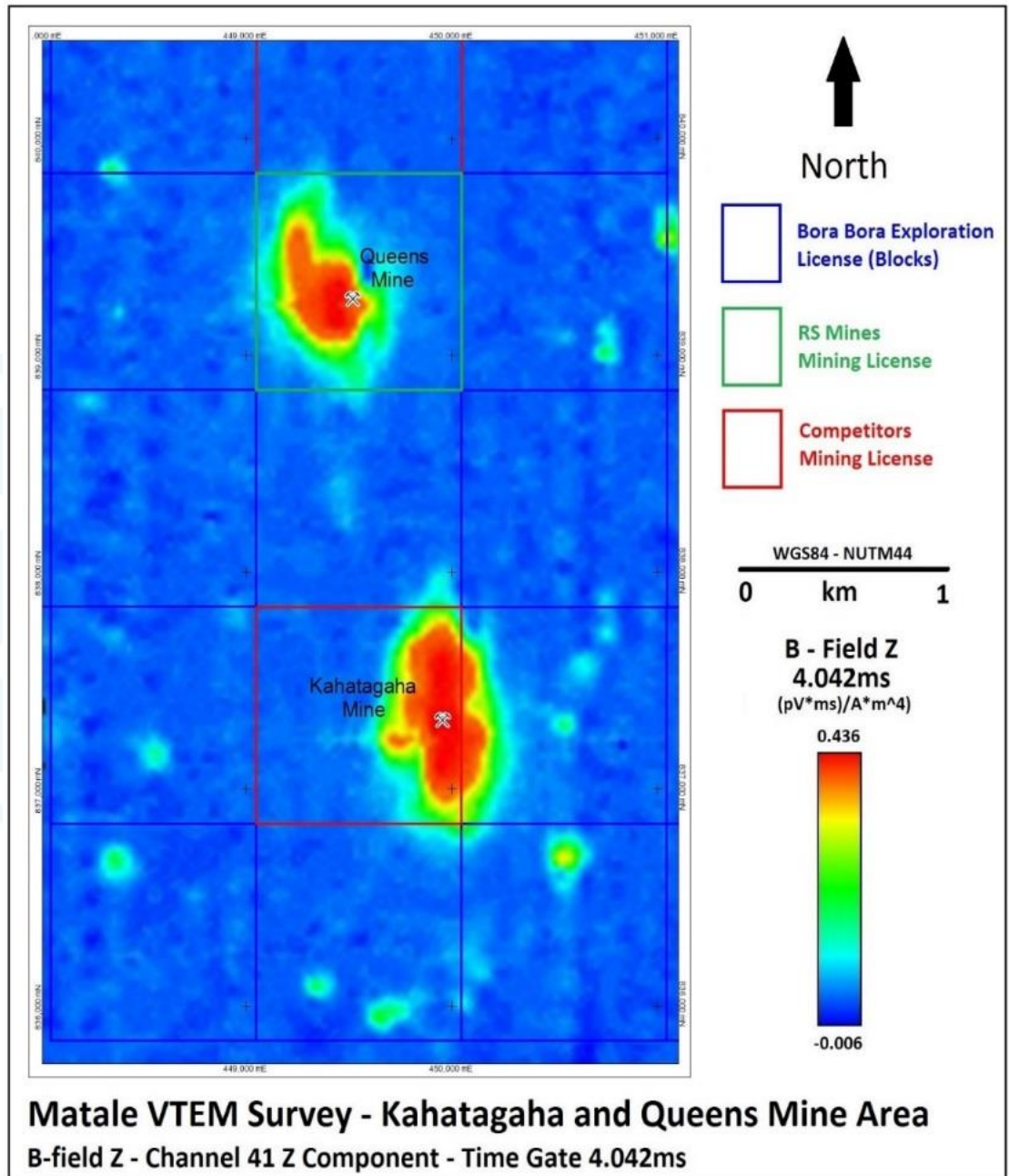


- VTEM flown over Matale/Kurunegala Project Oct/Nov2013
- Existing mines clearly detected in VTEM
- Three bullseye VTEM anomalies released
- Control 100% Kingfisher, and an agreement to acquire an initial 50% of the Queens Mine
- Further VTEM results (85% of survey) to be released once land access agreements in place
- Ground exploration to commence immediately at Kingfisher and Queens Mine including geophysics, geochemistry and drilling



BBR & RS Mines - Queens Deal

- Due diligence commenced
- Ground geophysics August 2014
- Test drilling program planned
- Great “bullseye” VTEM target similar to KKGM
- Fully licenced and operating mine
- First pass ground geophysics revealed 6 veins in one target area.
- Average thickness 60cms (up to 90cm)
- Agreement to toll treat graphite and process into graphene oxide
- First out of 50 types of graphite tested by Norway’s independent R&D company Graphene Batteries for use in graphene battery anodes



RS Mines - Customers



Forecast graphite and graphene boom



Electrodes



Refractories



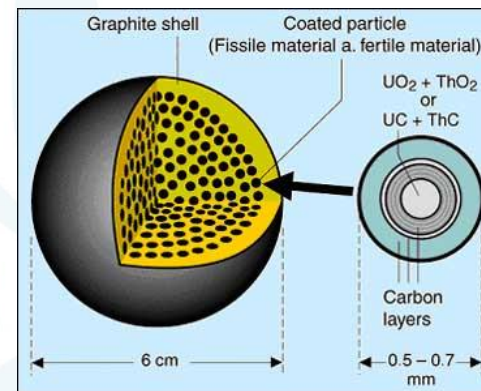
Batteries



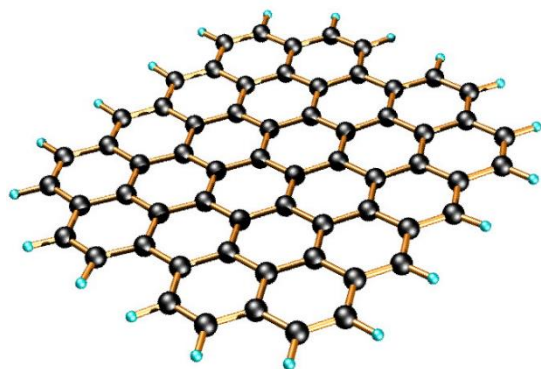
Brake linings



Lubricants



Pebble bed nuclear reactors



Graphene



Electric cars



Super capacitors

Strategic Plan 2014 & 2015

- Due Diligence on RS Mines
 - On ground geophysics underway
 - Drilling program to commence asap
 - Mine planning
 - Metallurgy testing
 - Graphite and Graphene Oxide budgets
 - Off-take agreements
- Exploration program “Kingfisher”
 - On ground geophysics and drilling program
- Monash University Graphene patents
 - Commercialisation of super capacitors – structure and business plan
- Develop strategic alliances for downstream processing capability
- Continue to develop a pipeline of high grade graphite projects in Sri Lanka

Summary

- Highest graphite extraction grade in the world – low-cost production
- Supportive Government and Mining Agency
- Projects located near infrastructure and major ports
- Close to export markets including China, Japan, South Korea and India
- Key targets identified for immediate on ground exploration – drilling
- Targeting downstream processing alliances.
- Successful DD on Queens mine will “leap frog” BBR from being a junior explorer to a mining and processing company.

Contact Details

Bora Bora Resources Limited (ASX: BBR)

Address: Suite 1002, Level 10
131 Macquarie Street
Sydney NSW 2000

Phone: (02) 9247 3203

Fax: (02) 9251 7707

Website: www.boraboraresources.com.au