



LATIN RESOURCES
LIMITED

London Investor Presentation

December 2014

Disclaimer

This presentation and any oral presentation accompanying it has been prepared by Latin Resources Ltd (“LRS “ or the “Company”). It should not be considered as an offer or invitation to subscribe for or purchase any securities in the Company or as an inducement to make an offer or invitation with respect to those securities. No agreement to subscribe for securities in the Company will be entered into on the basis of this presentation.

This presentation contains forecasts and forward looking information. Such forecasts, projections and information are not a guarantee of future performance, involve unknown risks and uncertainties. Actual results and developments will almost certainly differ materially from those expressed or implied. LRS has not audited or investigated the accuracy or completeness of the information, statements and opinions contained in this presentation. Accordingly, to the maximum extent permitted by applicable laws, LRS makes no representation and can give no assurance, guarantee or warranty, express or implied, as to, and take no responsibility and assume no liability for, the authenticity, validity, accuracy, suitability or completeness of, or any errors in or omission, from any information, statement or opinion contained in this presentation.

You should not act or refrain from acting in reliance on this presentation material. This overview of LRS does not purport to be all inclusive or to contain all information which its recipients may require in order to make an informed assessment of the Company’s prospects. You should conduct your own investigation and perform your own analysis in order to satisfy yourself as to the accuracy and completeness of the information, statements and opinions contained in this presentation before making any investment decision.



LATIN RESOURCES
Limited

Latin Resources Limited (ASX Code: LRS)



Mineral exploration and development company
with projects in Peru and Brazil



Over 5 years of exploration work and
\$15m spent to date



Over 160,000 hectares of mining concessions in Peru and Brazil



Strong Management team

Shareholding	Shares	Options/Rights
Total Shares	320 million	38 million
Market Cap @0.04	\$12 million	exercisable @ \$0.05 to \$0.30 on or before 1 December 2017

Junefield Group
major Shareholder
with **15 %**

Top 30
Shareholders
represent **64%**
of shareholding



LATIN RESOURCES
Limited

Peru - Project Portfolio & Strategy

Guadalupito Andalusite Project

Andalusite,
Iron
Zircon, Rutile,
Ilmenite



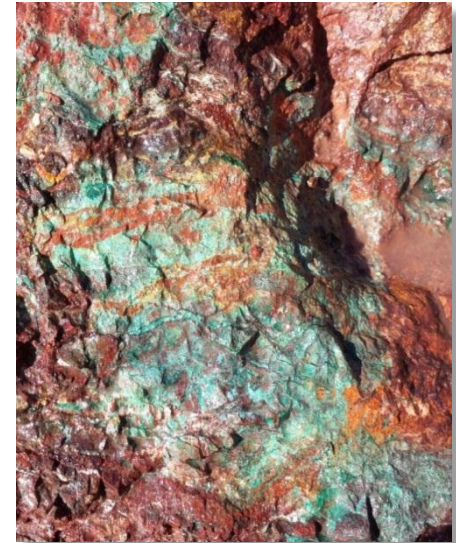
Close to
Port & Infrastructure

Fund & Drill Ilo Copper
Projects

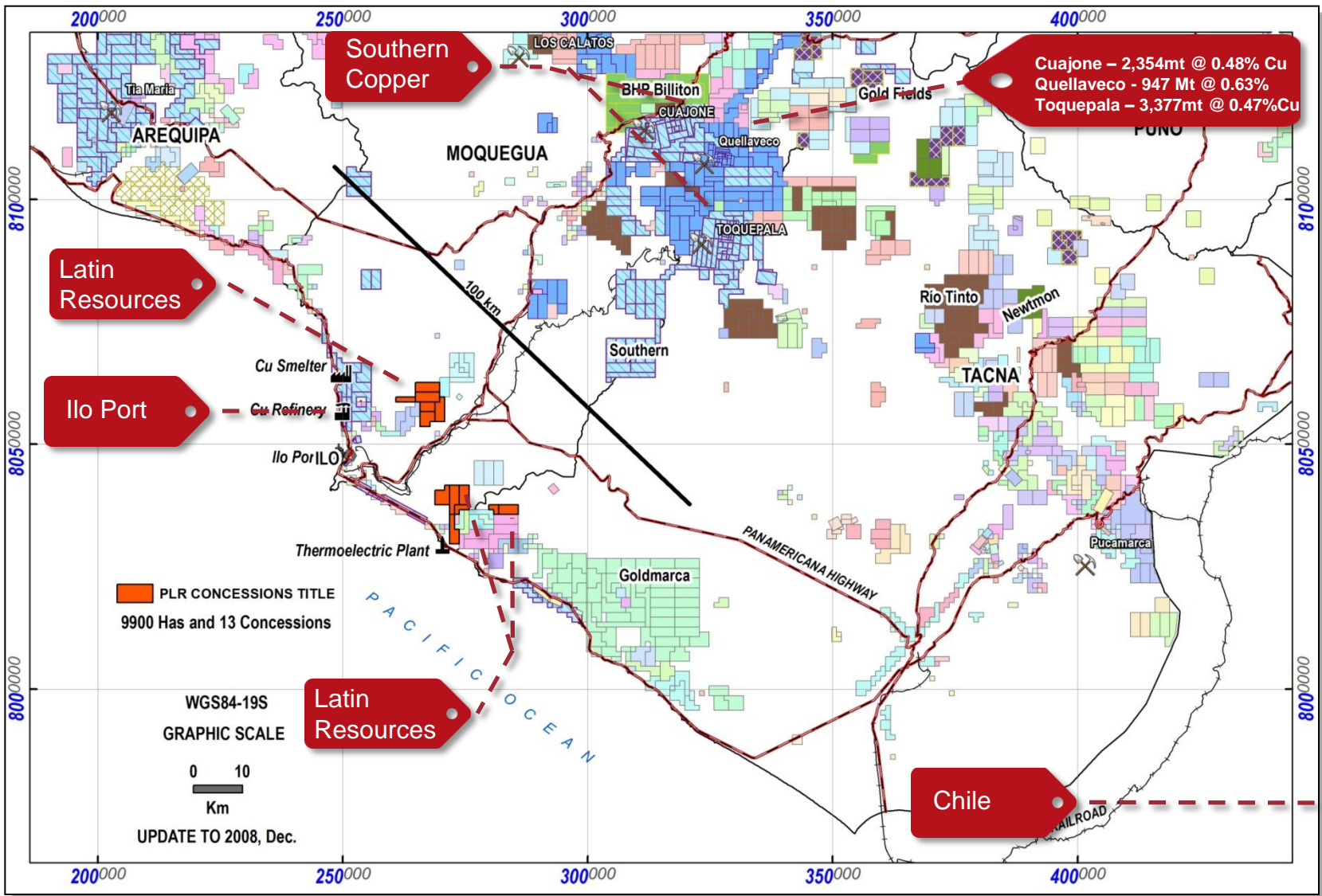
Develop projects to
Produce in near term

Find JV partner for
Guadalupito

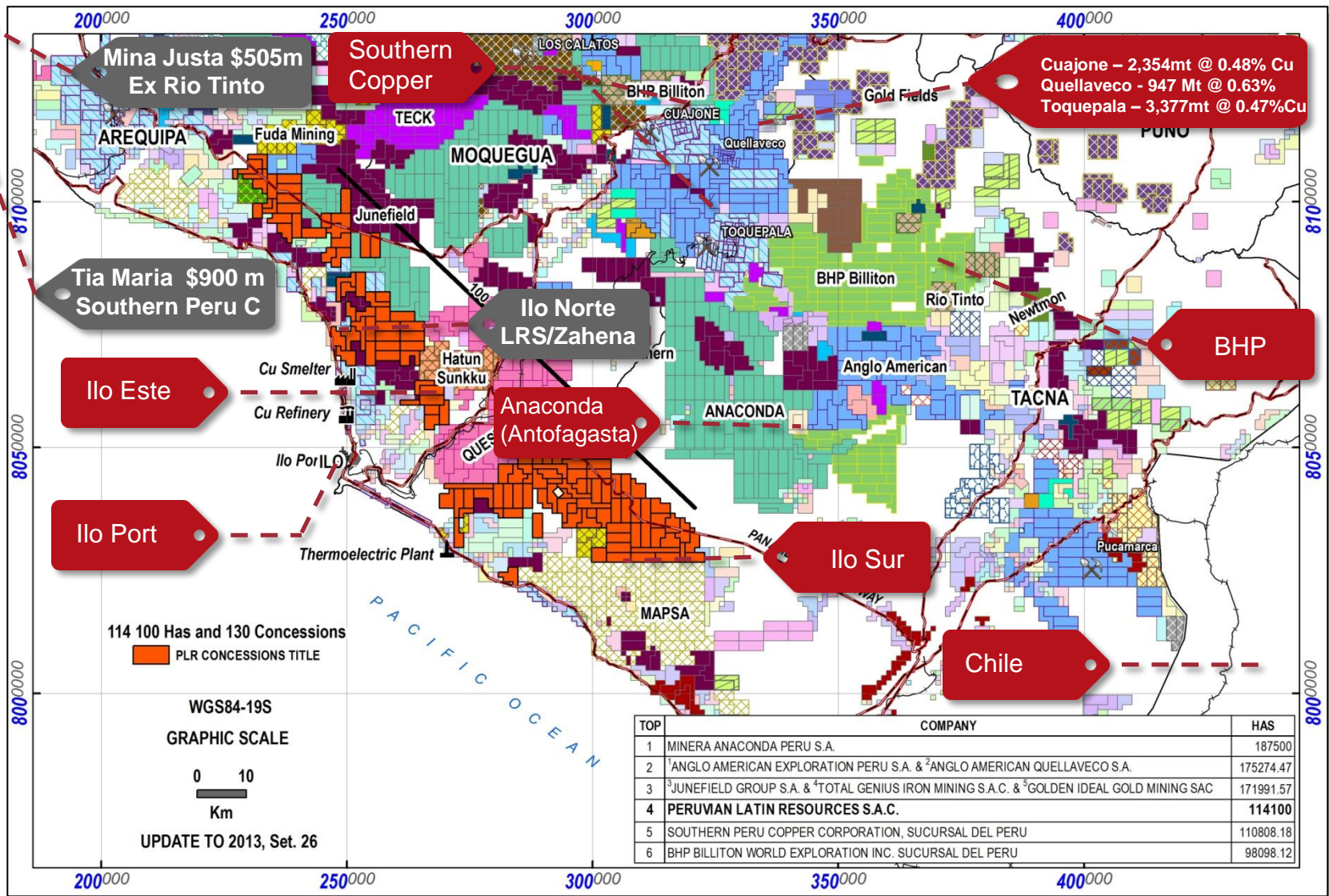
Ilo Copper Projects - Peru



Ilo District 2008



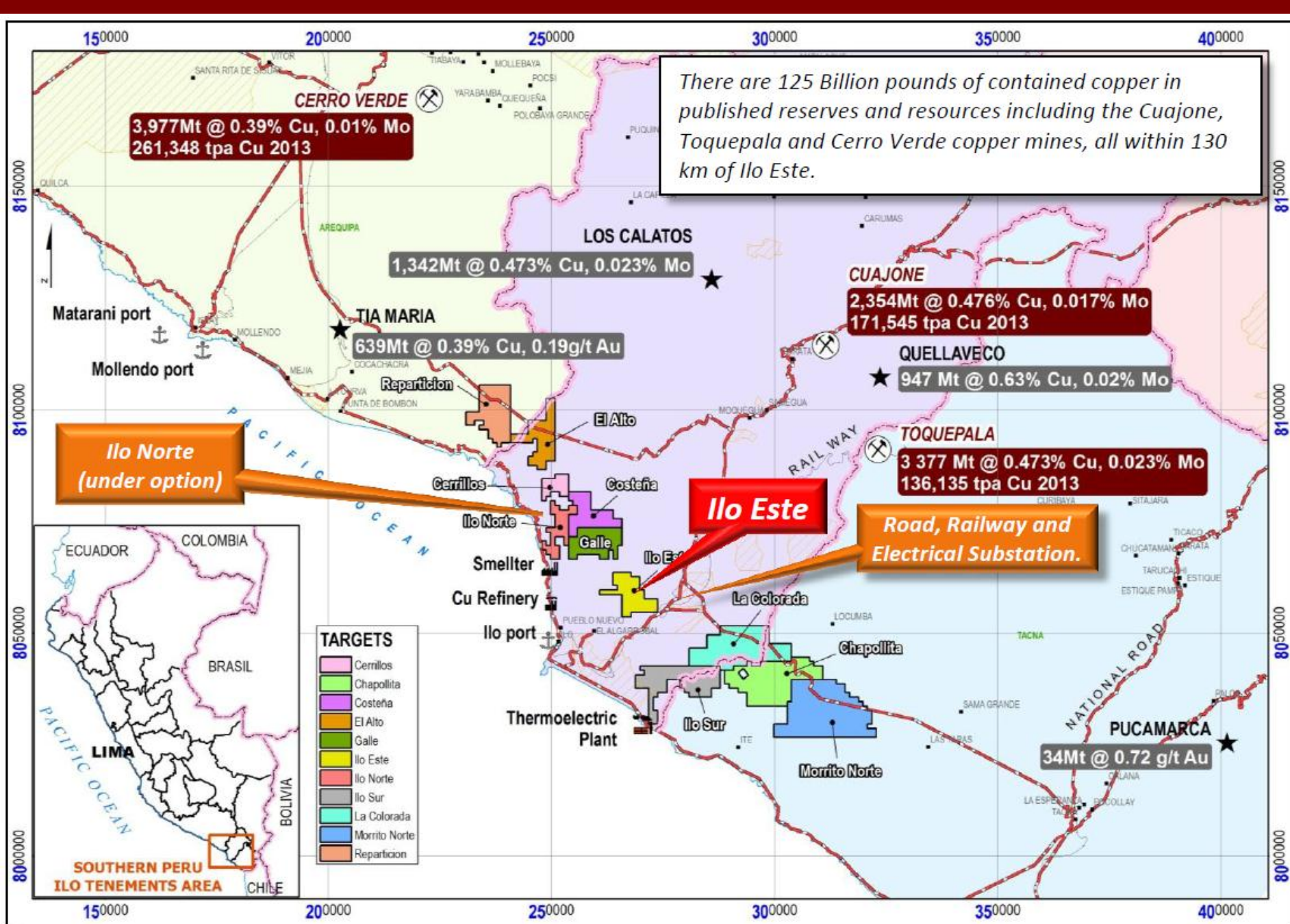
Ilo 2013 – Southern Peru host over 125 Billion pounds of contained copper in published reserves and resources



Latin Resources Concessions – 111,800 Hectares

- 10 new target areas located in the Iron Oxide Copper Gold (IOCG) & Porphyry district of the Ilo region of southern Peru.
- Excellent infrastructure – roads, power, ports.
- Copper deposits in the region;
Porphyry & Cu-Au IOCG
Tia Maria 639mt @0.39% Cu
Cuajone 2354mt @0.48% Cu
Toquepala 3377mt@0.47% Cu
Quellaveco 947mt@0.63%Cu
Mina Justa 413mt @0.79%Cu





Ilo Este – First Drill Hole – 746.2m

- First hole, IE-JDD-001, completed to a depth of 746.2 m with continuous copper and gold mineralisation from 0 to 200 m down hole.
- 0-200m @ 0.14% Cu, 0.1g/t Au, 22ppm Mo, 0.8g/t Ag (uncut).

Highest grades intersected: 0.34% Cu, 1.4g/t Au, 251ppm Mo, 5.4g/t Ag

From (m)	To (m)	Interval (m)	Cu (%)		Au (g/t)		Mo (ppm)		Ag (g/t)		metres <0.1% Cu included in avg
			Avg	Max	Avg	Max	Avg	Max	Avg	Max	
0	10	10	0.15	0.32	0.11	0.23	22	31	0.2	0.5	2
36	72	36	0.15	0.28	0.09	0.17	19	38	0.6	1.7	6
78	96	18	0.20	0.28	0.12	0.22	14	19	2.1	5.4	0
104	142	38	0.14	0.23	0.09	0.20	11	30	0.7	3.8	8
148	200	52	0.19	0.34	0.15	1.4	39	251	1.1	2.7	4



Depths are down hole depths.



LATIN RESOURCES
Limited

Ilo Este – Second Drill Hole – 629.2m

- Second hole, IE-JDD-002, completed to a depth of 629.2 m with continuous copper and gold mineralisation from 0 to 318 m down hole.
- 0-318m @ 0.13% Cu, 0.1g/t Au, 14ppm Mo, 0.8g/t Ag (uncut).

Best interval: 0-84m @ 0.24% Cu (oxides) (0.1% Cu cut-off).

Highest grades intersected: 0.46% Cu, 3.1g/t Au, 86ppm Mo, 16g/t Ag.

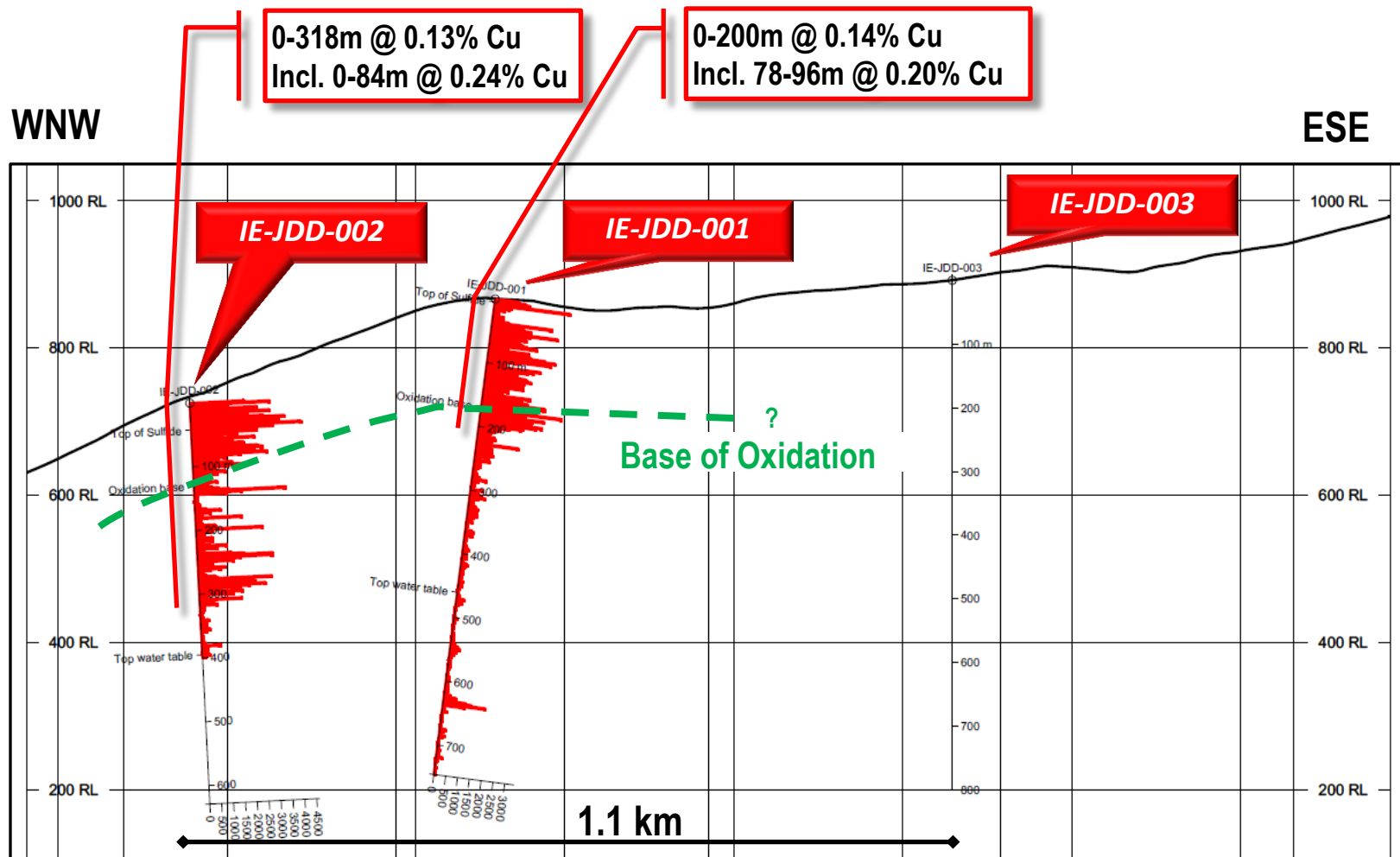
From (m)	To (m)	Interval (m)	Cu (%)		Au (g/t)		Mo (ppm)		Ag (g/t)		metres <0.1% Cu included in avg
			Avg	Max	Avg	Max	Avg	Max	Avg	Max	
0	110	110	0.21	0.46	0.11	0.40	16	86	1.0	3.2	12
<i>Incl. 0</i>	<i>84</i>	84	<i>0.24</i>	<i>0.46</i>	<i>0.13</i>	<i>0.40</i>	<i>15</i>	<i>75</i>	<i>1.1</i>	<i>3.2</i>	<i>0</i>
134	144	10	0.19	0.38	0.71	3.1	25	36	1.0	1.8	0
236	250	14	0.19	0.32	0.07	0.11	26	45	0.6	1.1	2
276	292	16	0.22	0.31	0.07	0.16	14	28	1.1	2.2	0
296	302	6	0.15	0.18	0.04	0.05	11	16	0.6	1.0	0

Depths are down hole depths.



LATIN RESOURCES
Limited

Ilo Este – Long Section – Northern Belt



Ilo Este – Infrastructure

- 14 km of access roads from the Pan-American Highway are in good condition and provide access for future drilling with minimal investment.
- The mineralised system is 6 km from the Pan-American Highway, Railway Line and Electrical Substation, and from there 32 km to the Port of Ilo.



ZAHENA JOINT VENTURE - US\$9M TO EARN 70% OF LATIN'S ILO NORTE PROJECT

- **Earn-in option to transfer 70% ownership of its Ilo Norte Project to Compañía Minera Zahena SAC (CMZ) for a total consideration of US\$3.65 million cash and exploration work commitments totalling US\$4 million plus the immediate execution of a 4800 m diamond drilling program.**
- **PLR to receive staged payments over 4 years totalling US\$3.65 million.**
- **A minimum of 12 diamond drill holes totalling at least 10,000m are to be completed by CMZ within 18 months. (now completed)**
- **Following exercise of the option, a Newco will be formed where PLR retains 30% ownership. CMZ will have a limited option to buy out PLR's 30% interest for a cash sum, to be negotiated, plus a 2% Net Smelter Return royalty on all mineral sales.**



Ilo Norte – High Grade Copper Intersected

- High grade copper intersected: 30m @ 0.93% copper & 0.12g/t gold from 282m including 6m @ 3.1% Cu & 0.45g/t Au from 300m in hole IN-019 (0.1% Cu cut off)
- 12 holes completed within 4 months (18 months was programmed by Zahena)
- Excellent infrastructure: 5km from sealed Highway, 10 km from Peru's major copper smelter and 25km from Port city of Ilo.
- Over 560,000 tonnes pa copper production and 125 billion pounds of copper in published resources and reserves within 100km of Ilo Norte.



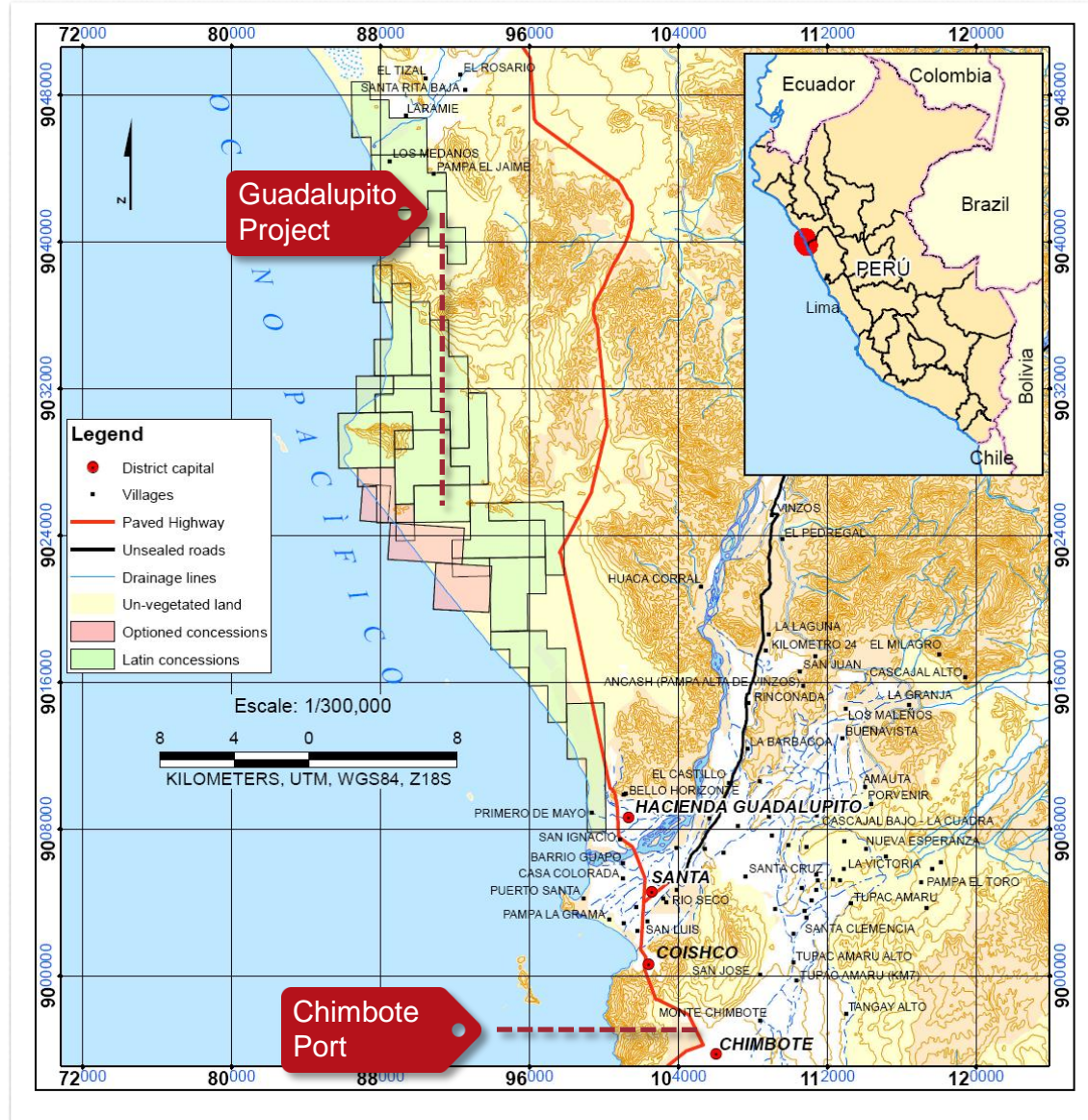
Guadalupito Andalusite Project - Peru

Total holding of over
24,000 hectares

The port town of Chimbote is
25kms South

SiderPeru Steel works (Gerdau Group)
is located in Chimbote

Close to
infrastructure - Port & Hwy



Guadalupito Andalusite Project



**1.3 Billion Tonnes
@ 5.7% HM**
**JORC Inferred
Resource**

Two Major Minerals

Andalusite 26% of HM
Magnetite 25% of HM

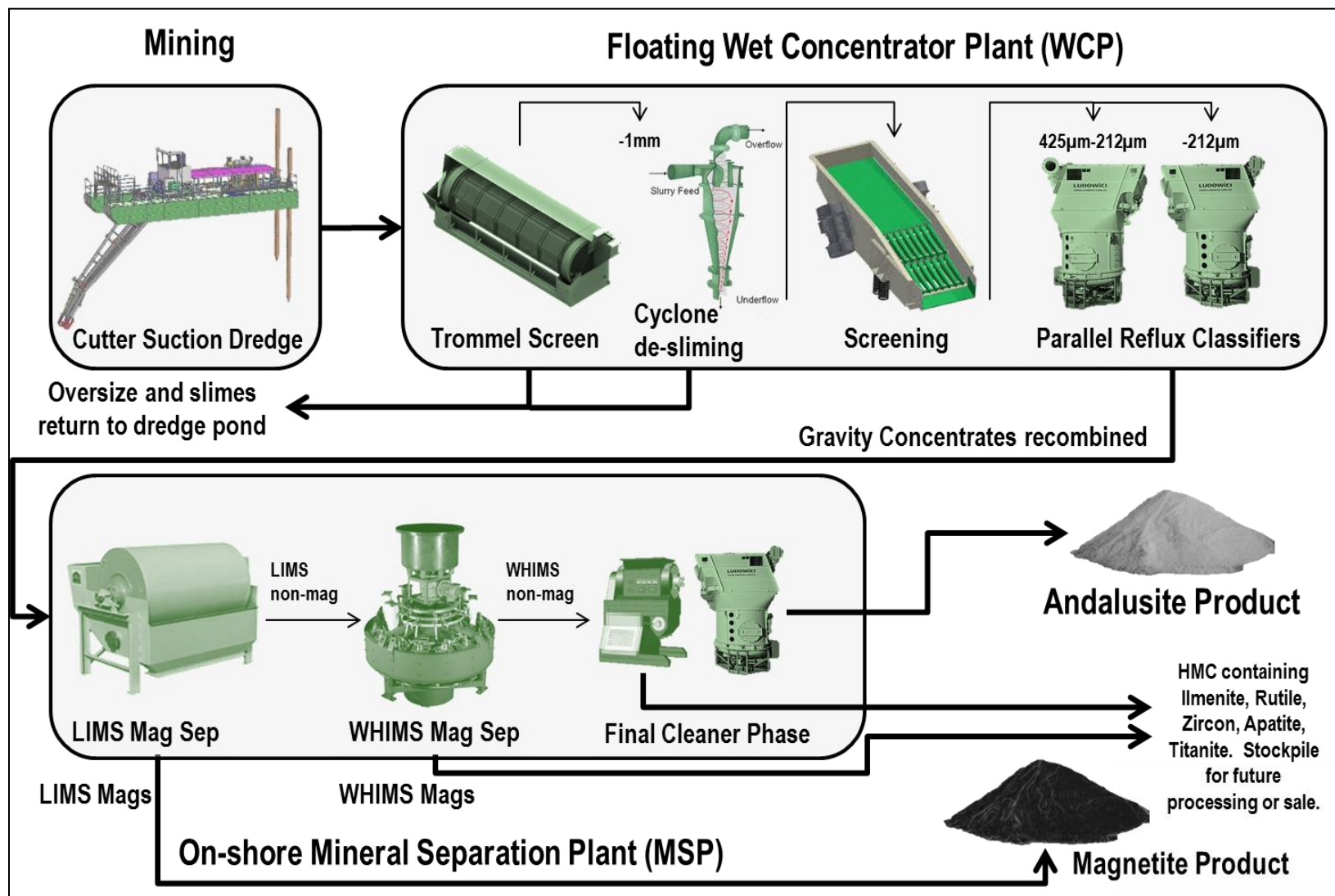
Discrete liberated mineral grains
of recoverable size of **Zircon,**
Rutile and Ilmenite
have been identified.

Conceptual exploration target of between **3.9 and 5.1 Billion** tonnes of mineralized sediments with between **3.2% and 8.4% HM** (*weighted average 4.5 Bt @ 6.1% HM*).

The potential quantity and grade is conceptual in nature, and there has been insufficient exploration to define a Mineral Resource and it is uncertain if further exploration will result in the determination of a Mineral Resource.

Stage 1 Flow Sheet

15 mtpa Dredging Mining Operation



Andalusite Pilot plant



Andalusite Sand "GUADALUSITE"

Typical Chemical Analysis		Typical Sieve Profile			
		METRIC		IMPERIAL	
Al ₂ O ₃	61.2%	+360 µm	0.9%	+45 Mesh	2.1%
SiO ₂	37.9%	+200 µm	31.6%	-45+70 Mesh	29.50%
Fe ₂ O ₃	0.18%	+140 µm	35.0%	-70+40 Mesh	55.40%
K ₂ O	0.11%	+100 µm	20.4%	-140 Mesh	13.0%
TiO ₂	0.14%	+60 µm	10.0%		
MgO	0.07%	-60 µm	3.0%		
Na ₂ O	0.01%				
CaO	0.09%				
Cr ₂ O ₃	<0.01%				
ZrO ₂	<0.25%				

Guadalupito Products

Magnetite

- Steel
- Pig Iron

Andalusite

- Refractory , kilns
- Proppants

Zircon Rutile

- Ceramic Tiles
- Sanitary Ware



Andalusite Industry

Latin Resources Andalusite

- 60% Al_2O_3
- 0.5% Fe_2O_3

Traditional Products

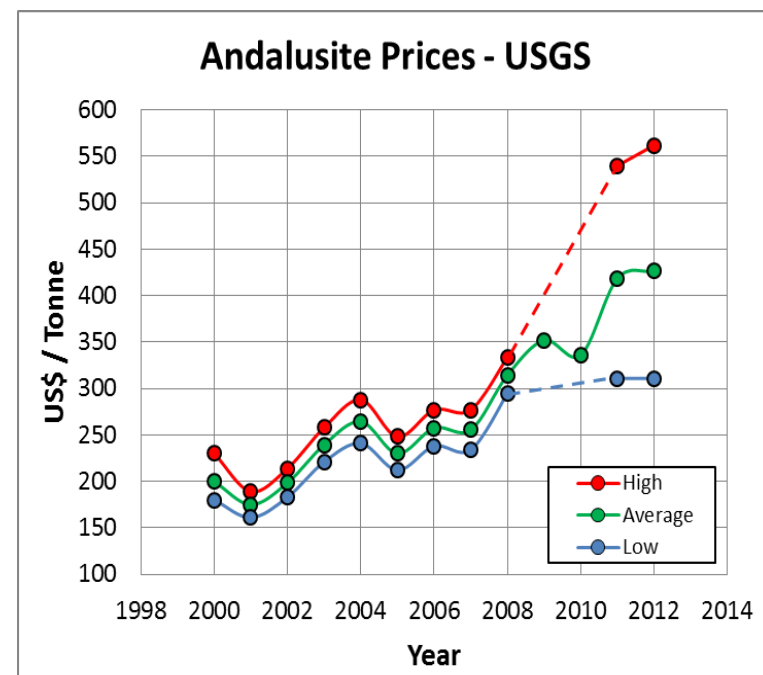
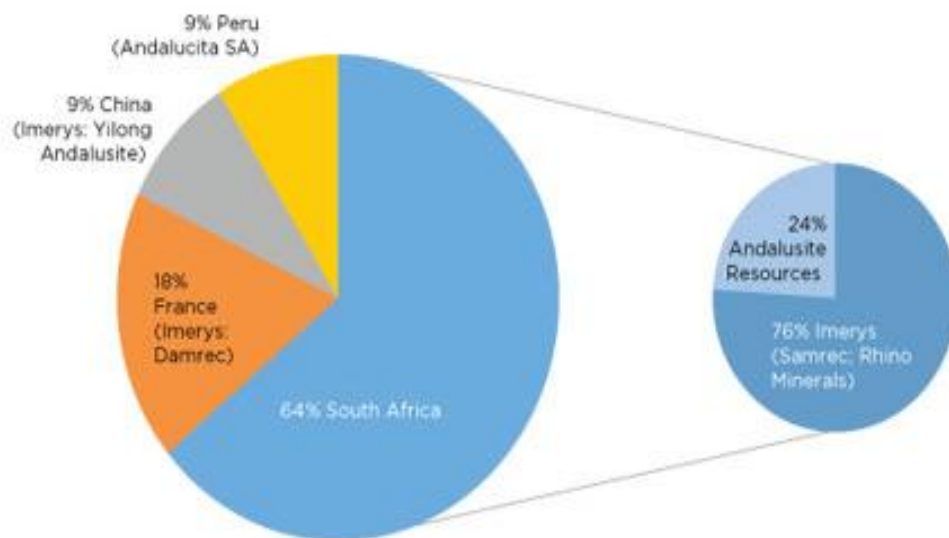
- Refractory , kilns
- Glass & Ceramics

Andalusite New Markets

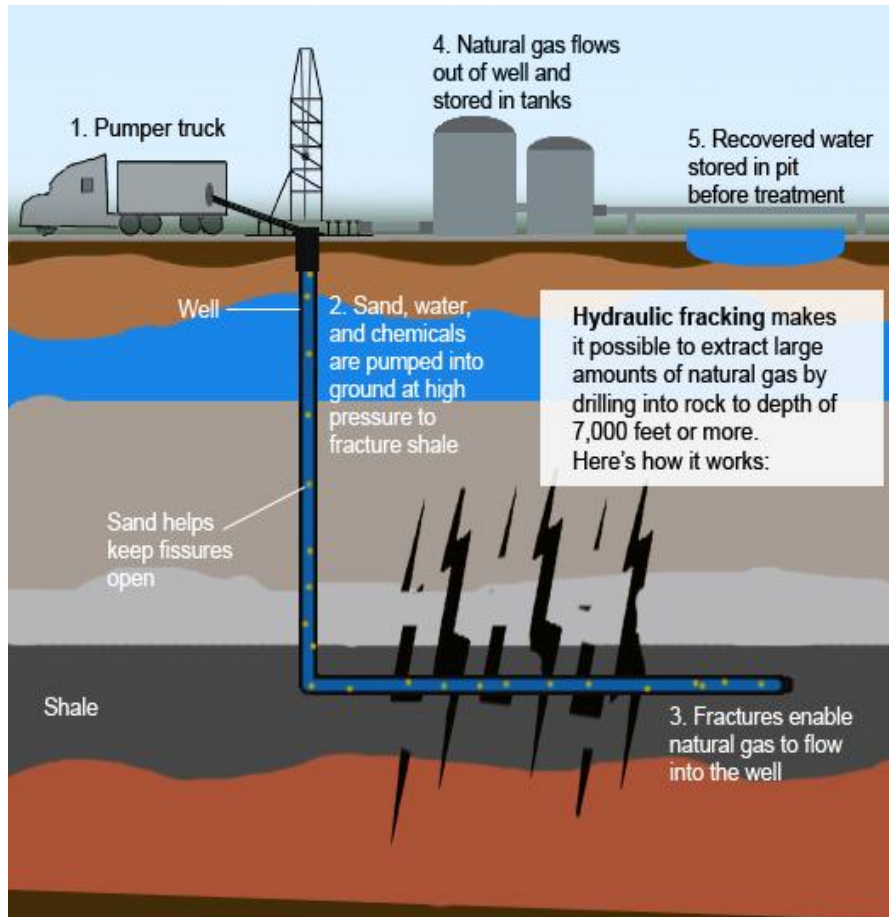
- Bauxite replacement
- Proppants (CSG Fracking)



Andalusite Production and Prices



Gas fracking and Proppant industry



Highest EUR, Production & IRR

Ultra-high strength
Mono-size and spherical

High strength
Uniform size and shape

Medium strength
Irregular size and shape

Low strength
Irregular size and shape

Highest Conductivity

Andalusite & Bauxite
Ultra-conductivity ceramic

Tier 1
High conductivity ceramic
Ceramic Proppants

Tier 2
Medium conductivity
resin-coated sand
Bauxite & Kaolin

Tier 3
Low conductivity sand
Silica Sands



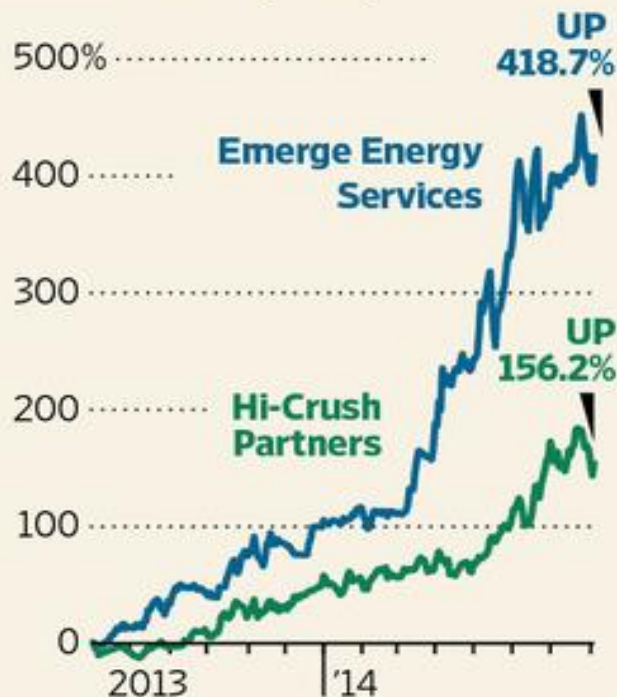
LATIN RESOURCES
Limited

Fracking Sand Demand

Piling Up

The demand for fracking sand in North America has lifted the stock of these two producers in the past year.

52-week share price performance



Sand demand, in billions of pounds



Sources: WSJ Market Data Group; PacWest Consulting Partners

The Wall Street Journal



LATIN RESOURCES
Limited

Proppant Market

- Fracking sands demand of 35m tons in 2014 growing to 45m tons in 2017 – Worth \$10b in 4 years time
- Ceramic proppants have maintained their 10% share of the US proppant market
- Ceramic proppants comprised most often of calcined bauxite, Andalusite , kaolin or a mixture
- Ceramic proppant hold other advantages over frac sand by allowing better gas flows in deeper wells
- French minerals conglomerate Imerys entered into the ceramic proppant market after acquiring manufacturer PyraMax Ceramics LLC for \$235m in 2013



Andalusite Proppant

- There is a need for proppants that have an excellent conductivity and permeability under extreme conditions and the industry has taken a renewed interest in materials containing larger amounts of alumina.
- There is a need for a new proppant material that exists in ample supply and that can offer the strength required to prop fractures in modern wells.
- The sillimanite minerals are polymorphic forms of the same chemical composition, namely Al_2SiO_3 . They include kyanite, sillimanite and andalusite.
- Andalusite is primarily mined in South Africa ,Peru and France, as well as China and Spain, although other deposits throughout the world exist and the properties of andalusite vary from mine to mine. Guadalupito is one of the largest fine Andalusite deposits in the world
- The andalusite may be mixed with other additives to form the proppant or anti-flowback additive. For example, additives such as bauxite, kaolin, meta-kaolin, pure or technical grade alumina (about 98%-99.9% alumina by weight),



Andalusite Proppant Processing

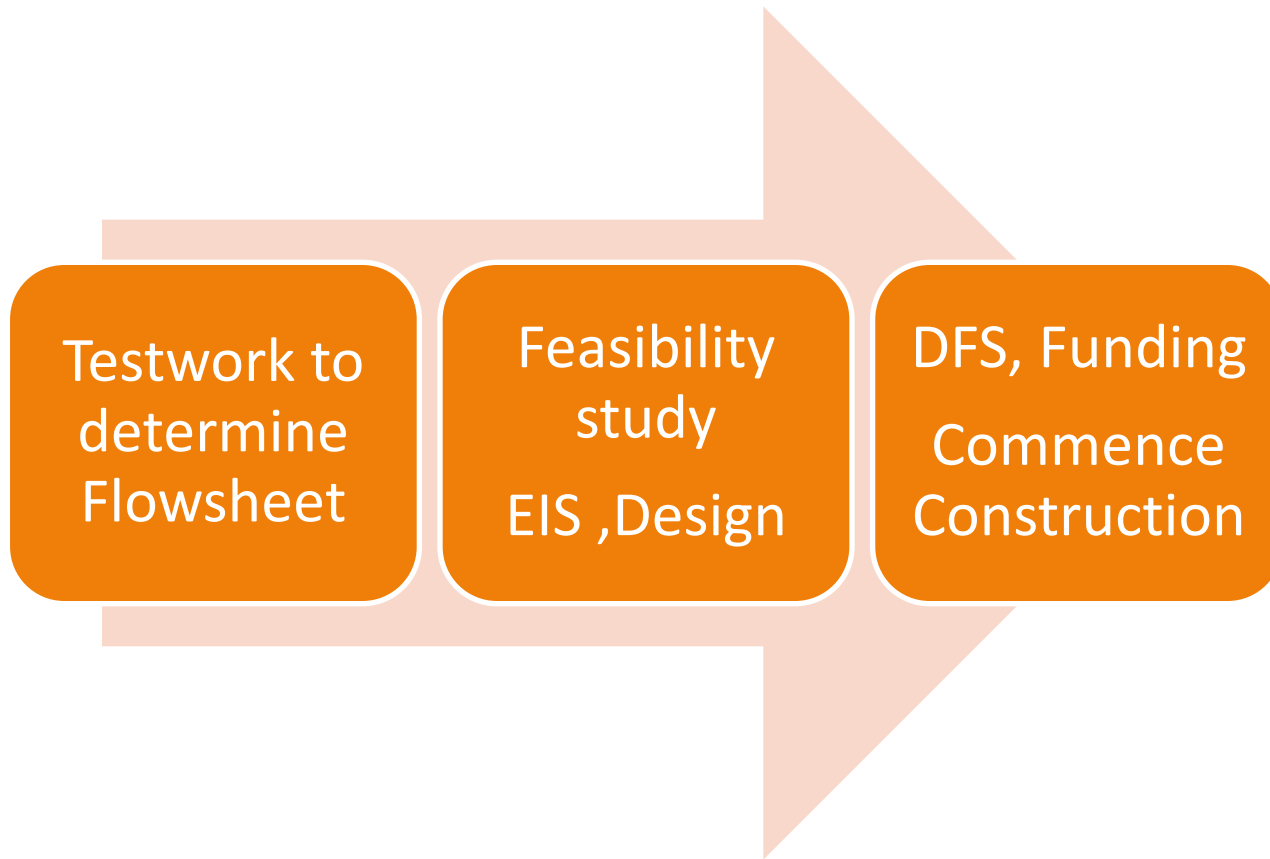


Current Proppant pricing

Average Bakken Well							
Company	Primary feedstock	Size	US\$ Sale price per pound mkt.av.	Compressive strength	Bulk Density	Pounds of proppants	Cost per well USD
Carbo Econoprop LWC	Kaolin Clay	20/40	\$0.32	7,500 psi	1.56	6,000,000	\$1,920,000
Imerys ProLite LWC	Kaolin Clay	20/40	\$0.32	7,500 psi	1.50	5,769,231	\$1,846,154
Chinese LWC	Low grade bauxite	20/40	\$0.26	7,500 psi	1.62	6,230,769	\$1,620,000
Carbo CarboProp ISP	Bauxite	20/40	\$0.42	10,000 psi	1.88	7,230,769	\$3,036,923
Imerys Propynite	Bauxite,Andalusite	20/40	\$0.44	15,000 psi	1.88	7,230,769	\$3,181,538

- Andalusite currently selling for \$400 to 550 tonne
- Ceramic Proppant selling for between \$600 and \$900 per tonne

Guadalupito Next Steps



Strategy and Goals for 2014 – 2015

Fund and continue drilling program at Ilo Copper projects

Finish Andalusite Testwork

Identify J/V partner at Guadalupito

Complete DFS and commence construction at Guadalupito



Competent person statement

The information in this presentation relates to previously released exploration results and geological data that were prepared and first disclosed under the JORC Code 2004. This has not been updated since to comply with the JORC Code 2012 on the basis that the information has not materially changed since it was last reported, and was based on information compiled by Mr Andrew Bristow, a full time employee of Latin Resources Limited's Peruvian subsidiary. Mr Bristow is a member of the Australian Institute of Geoscientists and has sufficient experience which is relevant to the style of mineralization and the type of deposit under consideration to qualify as a Competent Person as defined in the December 2004 edition of the Australasian Code for Reporting of Exploration Results, Mineral Resources and Ore Reserves (JORC Code). Mr Bristow consents to the inclusion in this report of the matters based on his information in the form and context in which they appear.

In addition the following [Disclosures](#) and [Competent Person Statement](#) should be read in relation to the Conceptual Exploration Target for the Guadalupito project referred to on page 18 of the announcement.

Disclosures

The latest global Conceptual Exploration Target (CET) for the Guadalupito Project was estimated at between 3.9 and 5.1 Billion tonnes with between 3.2% and 8.4% HM (weighted average 4.5 Bt @ 6.1% HM), and was exclusive of previously published JORC inferred resource estimates at "Heldmaier" and "Tres Chosas". The potential quantity and grade is conceptual in nature, and there has been insufficient exploration to define a Mineral Resource and it is uncertain if further exploration will result in the determination of a Mineral Resource. A detailed explanation of the estimate was published on 21 November 2012 and is based on the significant amount of exploration data including drilling results generated by the Company during the previous two years.

Given that a JORC (2004) inferred resource estimate of 1,073 Mt @ 6.1% HM was subsequently completed, (reported 07 February 2013), and was mostly within one part of the CET area, the validity of that part of the CET has been confirmed. Infill drilling and sampling activities have been designed to test the validity of much of the remaining CET, and exploration and environmental permits have been approved for these activities by relevant authorities, and are current up to 2016 with potential for extension.

When these activities will be completed remains uncertain given the significant inferred resource estimate already completed that provides more than enough resource for most conceivable medium to long term production scenarios. The completion of further validation of the CET and estimation of additional resources will depend on the budget allocated by the Company under a variety of funding scenarios under consideration for the Project at this time. It is envisaged that validation activities will take place over the coming 1 to 5 years.

Competent Person Statement

The information that relates to previously released mineral resources were prepared and first disclosed under the JORC Code 2004. This has not been updated since to comply with the JORC Code 2012 on the basis that the information has not materially changed since it was last reported, and was based on information compiled by Mr Andrew Bristow, a full time employee of Latin Resources Limited's Peruvian subsidiary. Mr Bristow is a member of the Australian Institute of Geoscientists and has sufficient experience which is relevant to the style of mineralization and the type of deposit under consideration to qualify as a Competent Person as defined in the December 2004 edition of the Australasian Code for Reporting of Exploration Results, Mineral Resources and Ore Reserves (JORC Code). Mr Bristow consents to the inclusion in this report of the matters based on his information in the form and context in which they appear.

The information in this report that relates to the Conceptual Exploration Target is based on information compiled by Mr Andrew Bristow, a Competent Person who is a Member of the Australian Institute of Geoscientist and a full time employee of Latin Resources Limited's Peruvian subsidiary. Mr Bristow has sufficient experience that is relevant to the style of mineralisation and type of deposit under consideration and to the activity being undertaken to qualify as a Competent Person as defined in the 2012 Edition of the 'Australasian Code for Reporting of Exploration Results, Mineral Resources and Ore Reserves'. Mr Bristow consents to the inclusion in the report of the matters based on his information in the form and context in which it appears.



LATIN RESOURCES
Limited



LATIN RESOURCES
LIMITED

Thank you and Questions