

4 December 2014

ASX RELEASE

ASX Code: WAC

## NICKEL SULPHIDE ASSESSMENT DEMONSTRATES MT IDA POTENTIAL

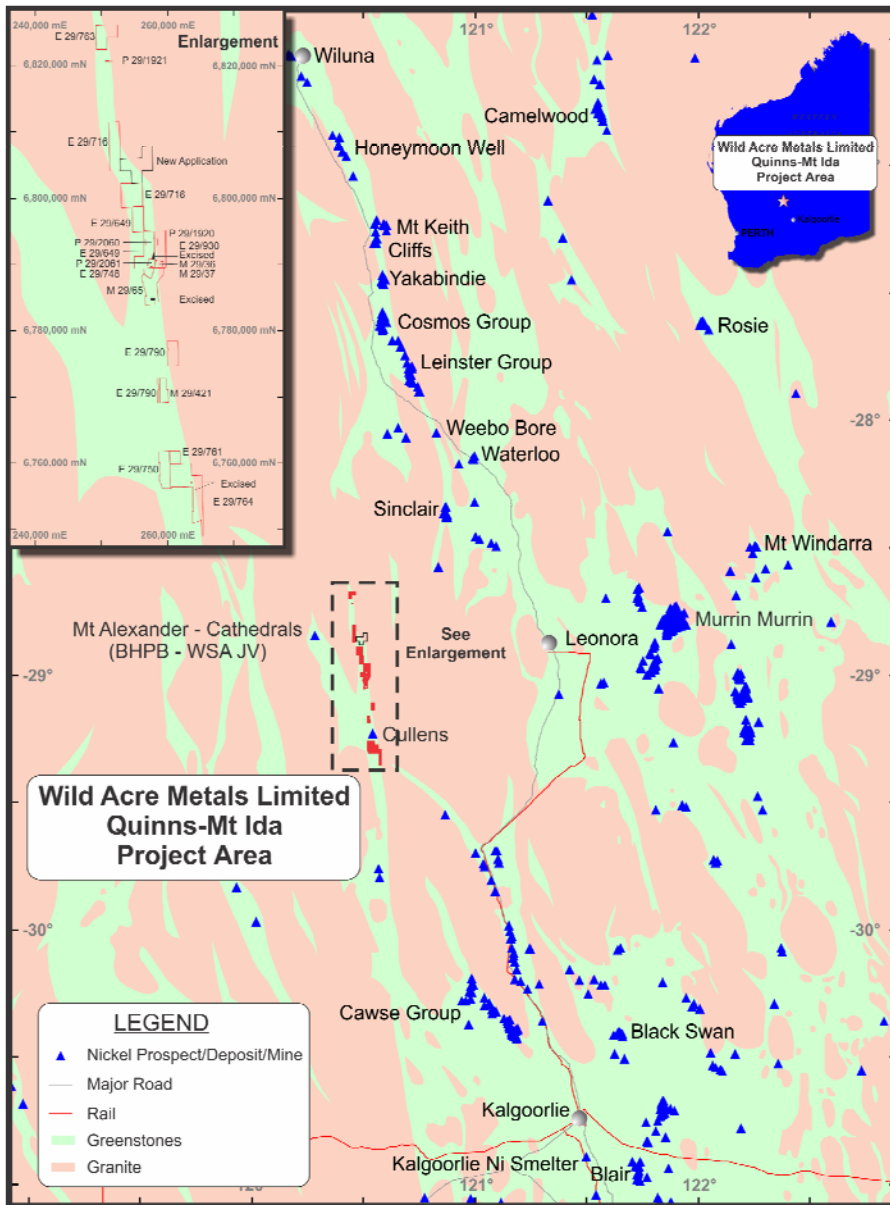
- Detailed independent expert's assessment of nickel sulphide potential completed over 100% owned Mt Ida Project, Western Australia
- Assessment confirms fertility of 80 kilometre strike of ultramafic sequences, with proven nickel sulphide mineralisation
- Project near to CRA's Cullens and BHP/Western Areas' Cathedrals nickel sulphide discoveries
- Investigations underway to plan airborne/ground EM surveys over key target areas

---

Wild Acre Metals Limited ("Wild Acre" or "the Company") is pleased to advise that a detailed assessment of the nickel sulphide potential of the Company's 100% owned Quinns-Mt Ida project area has recently been completed, highlighting excellent potential for nickel sulphide mineralisation within the Company's project.

Located in the Mt Ida district of the Eastern Goldfields approximately 200 kilometres north-west of Kalgoorlie, Wild Acre is the largest tenement holder in the Mt Ida-Kurrajong Greenstone Belt, holding approximately 80 kilometres of strike length (150 square kilometres in area) of prospective and under-explored ultramafic stratigraphy (Figure 1).

Work in the area over the last 20 years has been largely confined to gold exploration. However, exploration for nickel sulphides by CRAE during the 1970-1980's was successful in identifying the adjoining Cullen's Prospect, where drilling intercepted narrow widths of low to medium grade nickel sulphides (33 metres @ 0.9% Ni and 1,054 ppm Cu incl. 8 metres @ 1.2% Ni and 1,360 ppm Cu and 2m @ 2.6% Ni and 5,000 ppm Cu from approximately 370 metres depth).



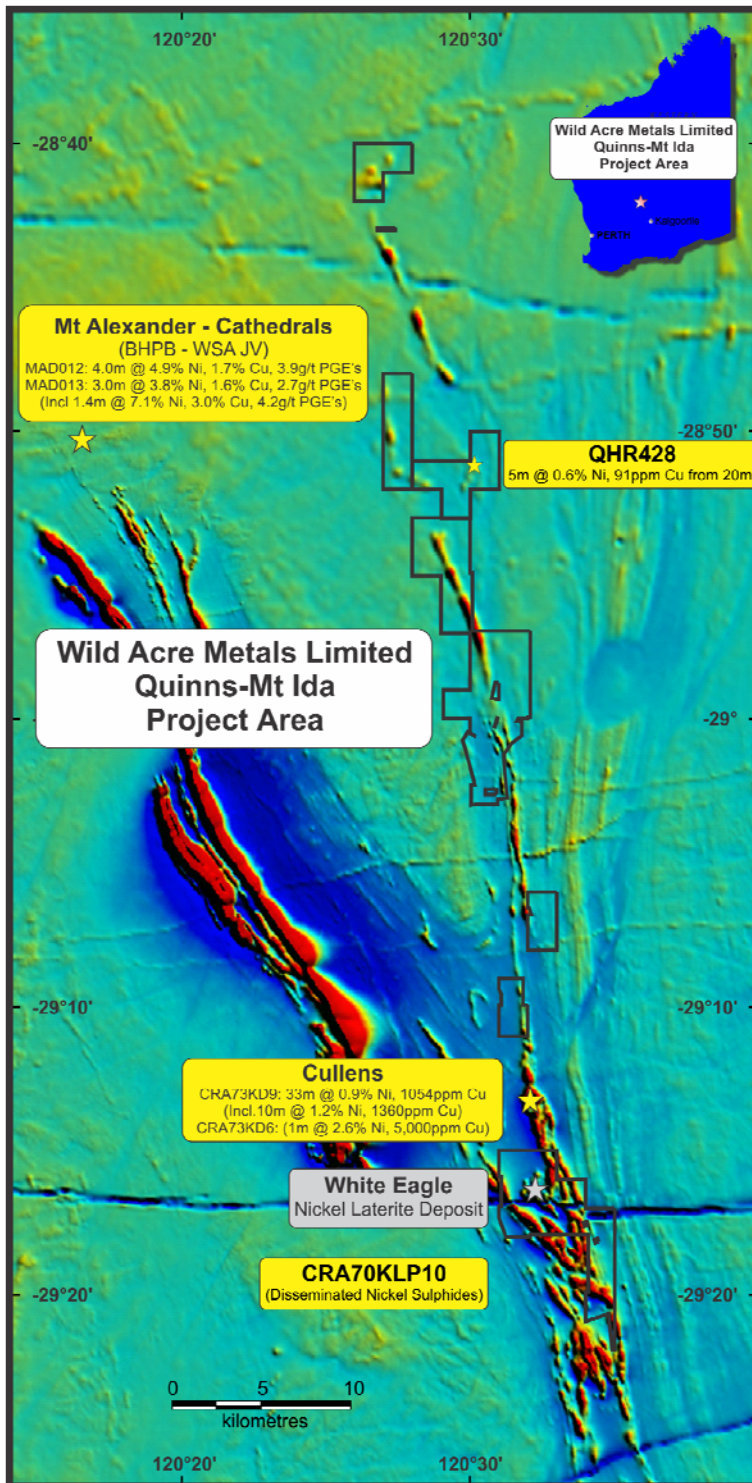
**Figure 1: Wild Acre tenement holding and regional operations**

The most recent phase of exploration for nickel sulphides in the area, carried out by the BHP Billiton-Western Areas Joint Venture in 2008, targeted the extension of the Mt Ida ultramafic sequence along the Western limb of the Kurralong anticline and was rewarded with the immediate discovery of the Cathedrals nickel/copper/PGE occurrence at Mt Alexander. The discovery hole (MAD013) intersected **4.0 metres @ 4.9% Ni, 1.7% Cu, 3.9g/t PGE** and a further hole intersected **3.0 metres @ 3.8% Ni, 1.6% Cu, 2.7 g/t PGE**.

Although nickel sulphide mineralisation has now been discovered on both limbs of the Kurralong anticline (Cathedrals and Cullens), no modern nickel exploration has been under-taken on the eastern limb of the Kurralong anticline where Wild Acre's ground holding is located.

A recent review of all available data has shown that the significant intercepts at Cathedrals and Cullens occur within wide zones of associated disseminated mineralisation (up to 60 metres wide in hole KD6 drilled by CRA at Cullens) at and above the basal ultramafic contact. These results confirm the development of substantial mineralised systems not previously recognised, supporting Wild Acre's view that the Kurralong ultramafic succession has significant potential to host economic deposits of nickel sulphides.

The current review has highlighted several target areas displaying anomalous nickel pathfinder geochemistry (Ni-Cu +/- PGE's) coincident with favourable basal ultramafic embayments and channel facies ultramafics worthy of immediate follow-up.



**Figure 2: Regional nickel Sulphide Prospects overlying aeromagnetic image**

### Going Forward

Planning and budgeting for detailed aeromagnetic surveys and airborne and ground EM geophysical surveys to further refine priority drill targets is currently in progress.

The Company is currently costing a detailed program covering key target areas which the Company hopes to commence implementing in early 2015.

The White Eagle Nickel laterite deposit is located at the southern end of Wild Acre's Quinns-Mt Ida project. The near surface geochemistry is considered indicative of a nickel sulphide phase at depth and warrants further investigation. Previous exploration by Gutnick Resources has been undertaken at this prospect targeting the western basal contact position in search of nickel sulphide mineralisation. Much of the RC drilling of the ultramafic unit was not deep enough to target the underlying favourable basal contact and the holes ended in the mineralised laterite zone.

No further drilling in this area has been completed to test this position where approximately 6 kilometres along strike to the north, the Cullens nickel sulphide prospect is located. This is considered a priority area for Wild Acre to target nickel sulphide mineralisation.

### **About Wild Acre**

Wild Acre Metals Limited is a focused gold, nickel and base metal explorer with projects located in Peru and the Eastern Goldfields of Western Australia. Peru is rated as one of the fastest growing economies in the world and a leading country by GDP in South America. Southern Peru represents an excellent opportunity for new discoveries within a “World Class” district of large copper, iron and gold mines. In Peru, Wild Acre’s 100% owned projects are targeting epithermal gold/silver, porphyry gold, copper and iron oxide copper gold (IOCG) deposit styles, while in Australia, Wild Acre’s 100% held projects are focused on nickel and gold.

**For further information please contact:**

**Grant Mooney**  
**Executive Chairman**  
**Phone: (08) 9226 0085**

**Competent Persons Statement**

The information in this document that relates to exploration results, is based upon information compiled by Mr William (Rick) Brown, a director of Wild Acre Metals Limited. Mr Brown is a Member of Australasian Institute of Mining and Metallurgy (AusIMM) and has sufficient experience which is relevant to the style of mineralisation and type of deposit under consideration and to the activity which he is undertaking to qualify as a Competent Person as defined in the December 2012 edition of the “Australasian Code for Reporting of Exploration Results, Mineral Resources and Ore Reserves” (JORC Code). Mr Brown consents to the inclusion in the report of the matters based upon the information in the form and context in which it appears.