



KORAB RESOURCES LIMITED

KORAB HOUSE

www.korab.com.au

FPO SHARES

ASX: KOR

Last price: AU\$ 2.2

BERLIN: C6S.BE

Last price: € 0.01



Figure 2 Geolsec Phosphate and Winchester Magnesite deposits - 70 km south of Darwin near town of Batchelor. Deposits are close to a highway, rail, water, gas, and power.

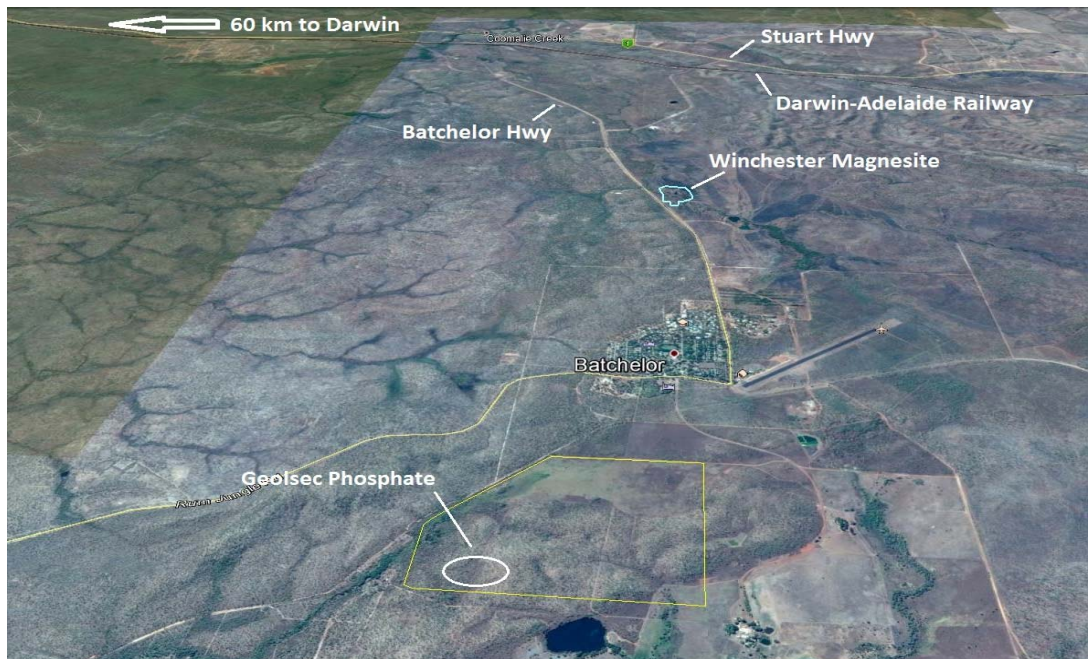


Figure 3 Geolsec Phosphate and Winchester Magnesite deposits location relative to town of Batchelor, basic infrastructure and topography.

- END -

CONTACT: Andrej K Karpinski, Executive Chairman - (08) 9474 6166, Int.: +61 8 9474 6166



20 PROWSE STREET, WEST PERTH, WA, 6005, AUSTRALIA
PO BOX 1958, WEST PERTH, WA, 6872, AUSTRALIA
TEL (08) 9474 6166 FAX (08) 9322 6333
ACN 082 140 252



PAGE 2



KORAB RESOURCES LIMITED

KORAB HOUSE

www.korab.com.au

FPO SHARES

ASX: KOR

Last price: AU\$ 2.2

BERLIN: C6S.BE

Last price: € 0.01

ABOUT KORAB RESOURCES

Korab Resources Ltd is an international mining and exploration company with operations in Australia and Europe. Korab's projects include gold and silver deposit at Bobrikovo in eastern Ukraine, Geolsec phosphate rock deposit and Winchester magnesite deposit at Batchelor in the Northern Territory of Australia. The Company also explores for gold and copper at Ashburton Downs in Western Australia and for polymetallic deposits at Batchelor in the Northern Territory. More information about Korab's projects can be sourced from Korab's website at www.korab.com.au. Korab's shares are traded on Australian Securities Exchange (ASX) and on the Berlin Stock Exchange (Berliner Börse) through Equiduct electronic trading platform.



20 PROWSE STREET, WEST PERTH, WA, 6005, AUSTRALIA
PO BOX 1958, WEST PERTH, WA, 6872, AUSTRALIA
TEL (08) 9474 6166 FAX (08) 9322 6333
ACN 082 140 252



PAGE 3