



**METALS of AFRICA**  
LIMITED

## ASX Announcement Metals of Africa Ltd

**4 February 2015**

### Contact Details

Cherie Leeden  
Managing Director  
Metals of Africa Limited  
E: [cherie@metalsofafrica.com.au](mailto:cherie@metalsofafrica.com.au)

James Moses  
Media and Investor Relations  
Mandate Corporate  
T: +61 420 991 574  
[james@mandatecorporate.com.au](mailto:james@mandatecorporate.com.au)

### MTA Capital Structure

Shares on Issue: 129,378,027

Listed Options: 57,854,396  
(\$0.15, 07/01/2017)

Unlisted Options: 19,255,166  
(various price, expiry)

Market Cap @ \$0.065; A\$8.41m

### MTA Board

**Gilbert George**  
Non Exec Chairman

**Cherie Leeden**  
Executive Director

**Brett Smith**  
Non Exec Director

**Steven Wood**  
Company Secretary

ASX Code: MTA

[www.metalsofafrica.com.au](http://www.metalsofafrica.com.au)

## Exploration commences at Kroussou high-grade zinc project in Gabon

### Highlights

- Fieldwork to recommence at the high-grade Kroussou Zinc Project in Gabon.
- Work will test extensions to known outcropping mineralisation discovered in 2014 and explore new areas within project.
- Previous exploration identified 85km strike length which is prospective for zinc, lead, silver and barite.
- Fieldwork is designed to define drill targets for drilling in 2015.

Metals of Africa Limited (ASX: MTA) ("the Company") is pleased to announce that it has commenced its 2015 Exploration Season at its Kroussou Project in Gabon (see figure 1).

The field program will be focused on geological mapping of a zinc-lead rich mineralised contact over the 85km strike length of the project area. The Company's field team will prioritise the best outcrops of zinc-lead mineralization, including historically defined prospects (see Figure 2).

It is anticipated the field mapping program will continue into early April 2015.

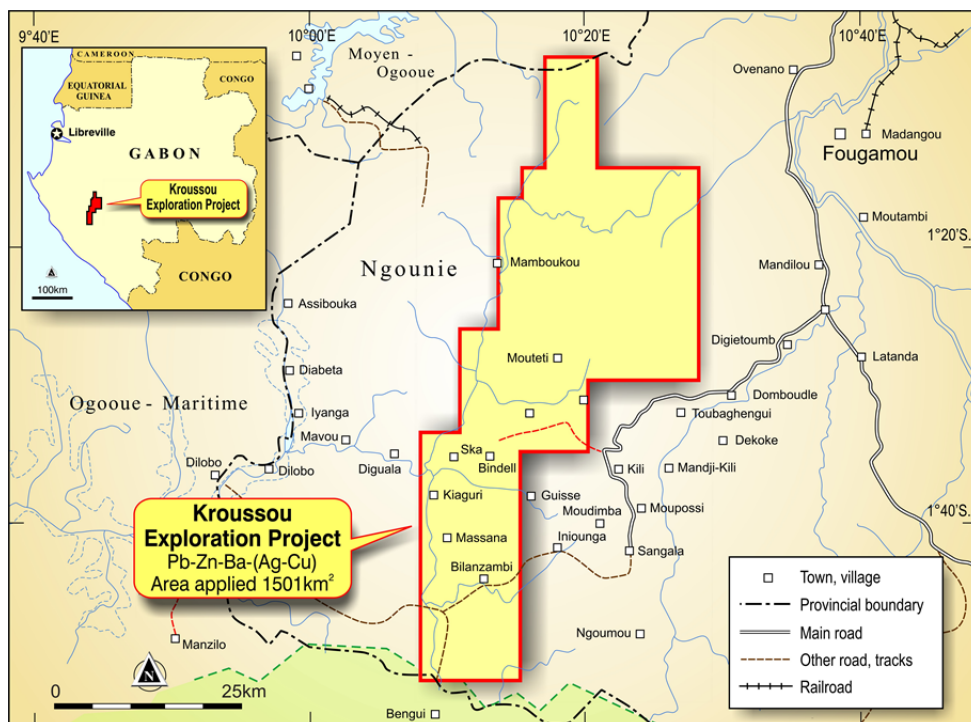


Figure 1. General location map of the Kroussou Project in Gabon

### AUSTRALIA

945 Wellington Street,  
West Perth, Western Australia 6005  
T +61 8 9322 7600 F +61 8 9322 7602

### MOZAMBIQUE

Edificio Solar das Acacias  
Av. Julius Nyrere, 4000  
Lojas 05 e 06

[www.metalsofafrica.com.au](http://www.metalsofafrica.com.au)

ABN 75 152 071 095

Metals of Africa has previously confirmed high grade zinc (Zn) and lead (Pb) mineralisation outcrops at the project area, as announced to the ASX on 28 October 2014.

### Geological mapping program

Geological mapping is being conducted over the length of the license to further confirm mineral prospects previously defined by the French Bureau de Recherches Geologiques et Minieres (BRGM) and to confirm whether further outcropping prospects exist on the license. The core focus of the mapping program is to map the Pb-Zn mineralised contact between the Cretaceous Cottier basin sediments and Archean-Paleoproterozoic basement rocks and to collect further rock chip samples to further confirm the grade and mineralogy of the outcropping mineralisation.

Historical work conducted by BRGM in the 1960's and later by Comilog (Gabon government owned mining company) will also be validated by the field team referencing historical maps and geoscientific reports.

Once the mapping is completed the Company plans to conduct further geoscientific study (trench and detailed rock chip sampling) of the best prospects with the anticipation of planning a drill program in 2015 should the prospects be deemed sufficiently prospective to warrant drill testing.

Kroussou samples have also been sent for mineral petrography assessment to confirm lead and zinc mineralogy, rock classification and mineralisation timing events all of which are important to further understand the overall economic prospectivity of this style of Pb-Zn mineralisation.

The rock chip samples from the October 2014 program are currently being dispatched to the SGS laboratory in South Africa for geochemical analysis.

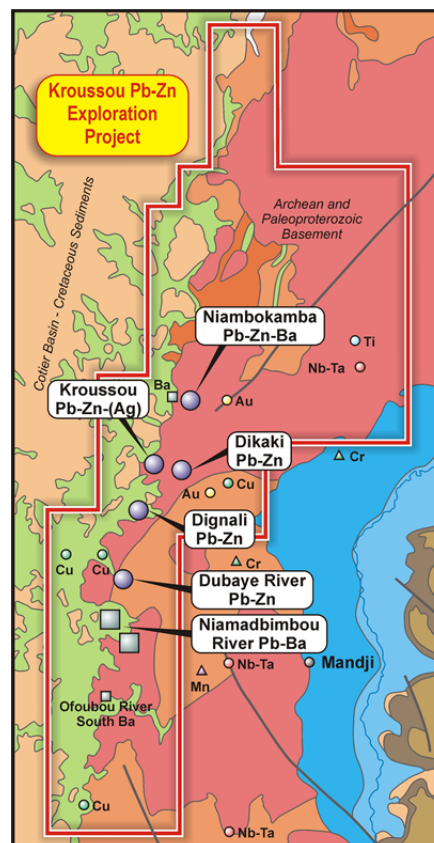


Figure 2. Regional geology with historical BRGM prospects and occurrences shown



On behalf of Board of Directors Metals of Africa Ltd.

**-ENDS-**

For further information please contact:

**Cherie Leeden**  
**Managing Director**  
+61 8 9322 7600  
[admin@metalsofafrica.com.au](mailto:admin@metalsofafrica.com.au)

### **About Metals of Africa Limited**

Metals of Africa (ASX: MTA) is a diversified minerals exploration company dedicated to exploring for world class deposits in Africa. The Company's core commodity targets are: zinc, lead, copper and graphite.

Metals of Africa are conducting a series of research and development activities and trials in both Australia and Africa in establishing the best process methodology in mineral exploration, mining and processing. This activity is for the benefit of the company's holdings and in the licensing of intellectual property as a means of bringing these ideas to the market.

### **Competent Persons Statement**

The information in this report that relates to Exploration Results is based on information compiled by Ms. Cherie Leeden, who is Managing Director of the Company. Ms Leeden is a Member of the Australian Institute of Geoscientists and has sufficient experience of relevance to the styles of mineralisation and the types of deposits under consideration, and to the activities undertaken, to qualify as a Competent Person as defined in the 2012 Edition of the Joint Ore Reserves Committee (JORC) Australasian Code for Reporting of Exploration Results, Mineral Resources and Ore Reserves. Ms Leeden consents to the inclusion in this report of the matters based on information in the form and context in which it appears.