



Investor Presentation

March 2015



Investment Highlights

- Listed on ASX in early 2012
- Quality exploration portfolio spanning North, West and East Africa

Strategy

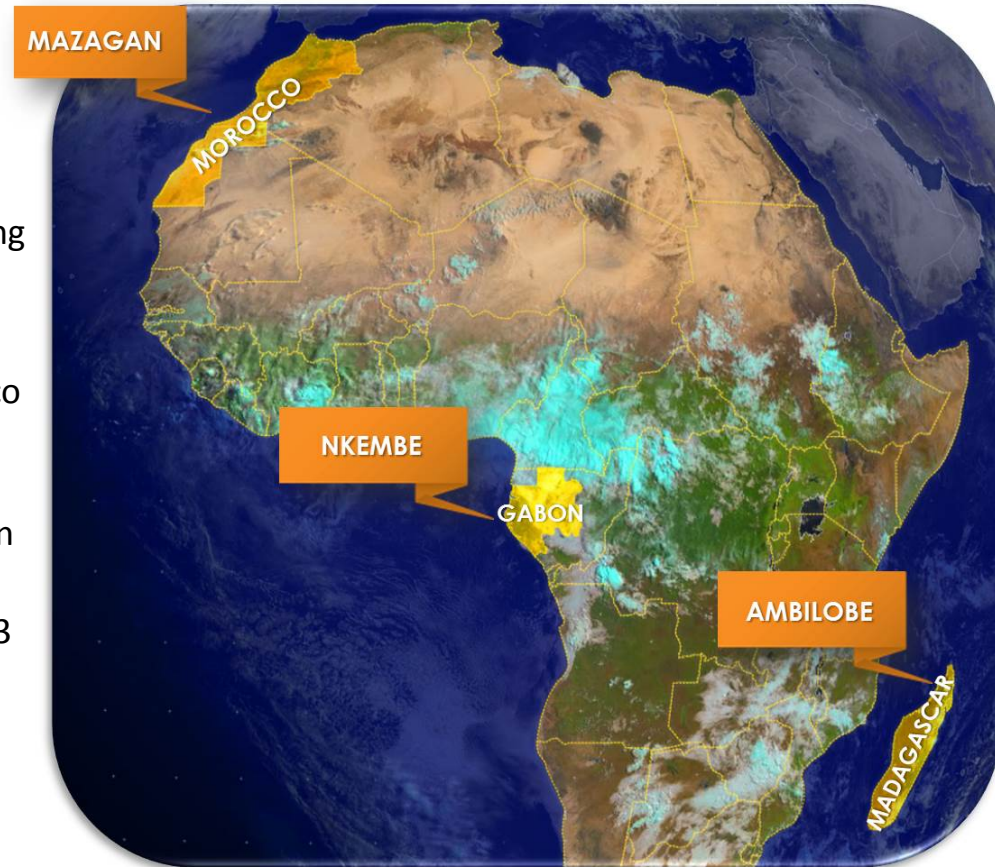
- African focused explorer
- Identify and capture large unrecognised and/or under-valued acreage
- Seek qualified industry partners to fund drilling while maintaining meaningful equity stake

Achievements to Date

- Bid and captured 75% of an offshore block (Mazagan) in Morocco (2011) and farmed out to a subsidiary of Freeport McMoRan (2013) to fund two wells, retaining a 23% interest
- Bid and captured 100%* of an offshore block (Nkembe) in Gabon in 2011. Farmout process underway
- Farmed into an offshore block (Ambilobe) in Madagascar in 2013 taking a 50% interest for the cost of funding a 3D seismic survey
- No debt and fully funded through the next 12 month budget phase

Near-Term Activity

- Drilling two wells offshore Morocco, the first scheduled to spud in April 2015
- 3D seismic acquisition in Madagascar to commence March 2015

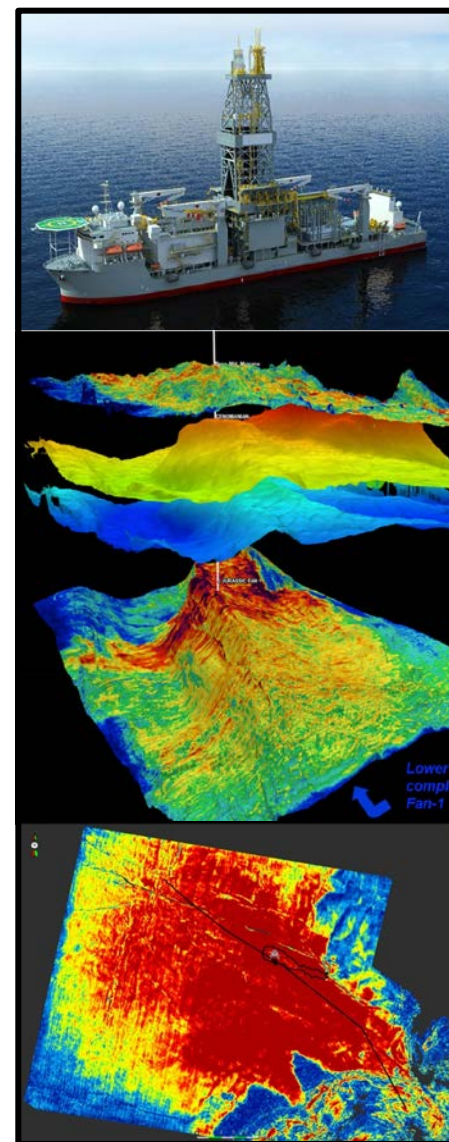


* Subject to the right of the State of Gabon to participate in any development for up to a 20% interest under the Production Sharing Contract

Mazagan, Offshore Morocco (23% interest)

High Impact Drilling

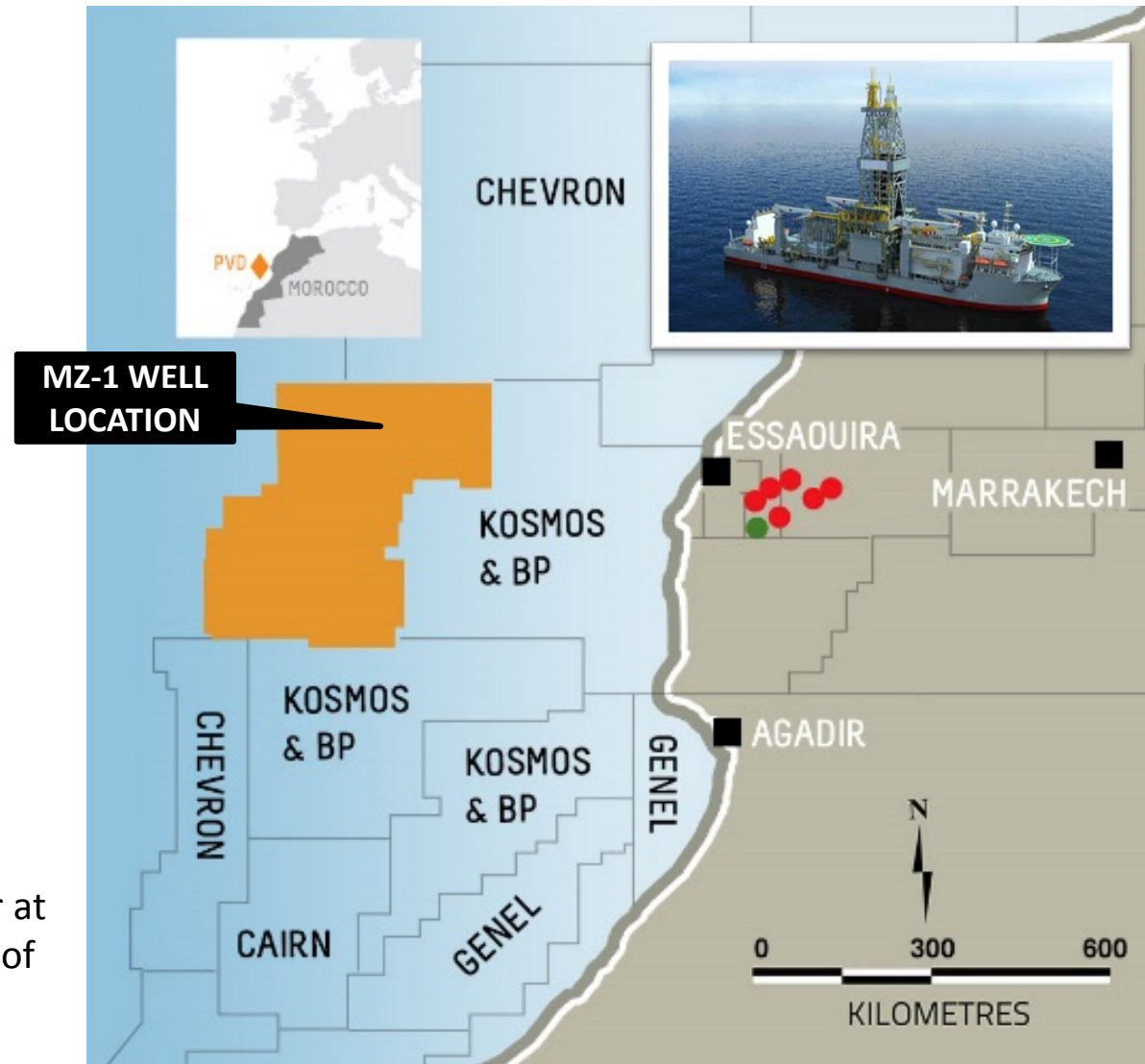
- MZ-1 scheduled to spud in April 2015
 - Water depth:* 2,176 metres
 - Firm TD:* 5,600 metres TVDSS
 - Contingent TD:* 6,150 metres TVDSS
- Unique location where four stacked targets can be tested by a single vertical well (five targets if well is deepened)
- Testing a range of play types (Cretaceous structural four way dip closures and Jurassic fans)
- Total gross unrisks mean prospective resources of over 1.4 billion barrels (328 mmbo net to Pura Vida), with a high case of over 3.0 billion barrels¹
- Estimated well cost of US\$136.6 million (including contingencies). PVD carried up to US\$215 million by Freeport plus option at PVD's election for additional carry in excess of US\$215 million
- Exceptional leverage to exploration success for PVD shareholders
- Follow-up potential ... location of second well to be determined following results of MZ-1 well



Mazagan, Offshore Morocco

Prime Location

- MZ-1 well designed to:
 - Penetrate up to five stacked targets
 - Penetrate source rocks
 - Test multiple play types
- The Lower Jurassic fans are inter-bedded within the source rocks:
 - Ideally positioned for migration of hydrocarbons
 - Fan systems may provide migration pathway into the Cretaceous structural anticlinal traps
- The different plays/elements work together at this location to enhance the overall chance of making a commercial oil discovery



Mazagan, Offshore Morocco

Multiple Stacked Prospects

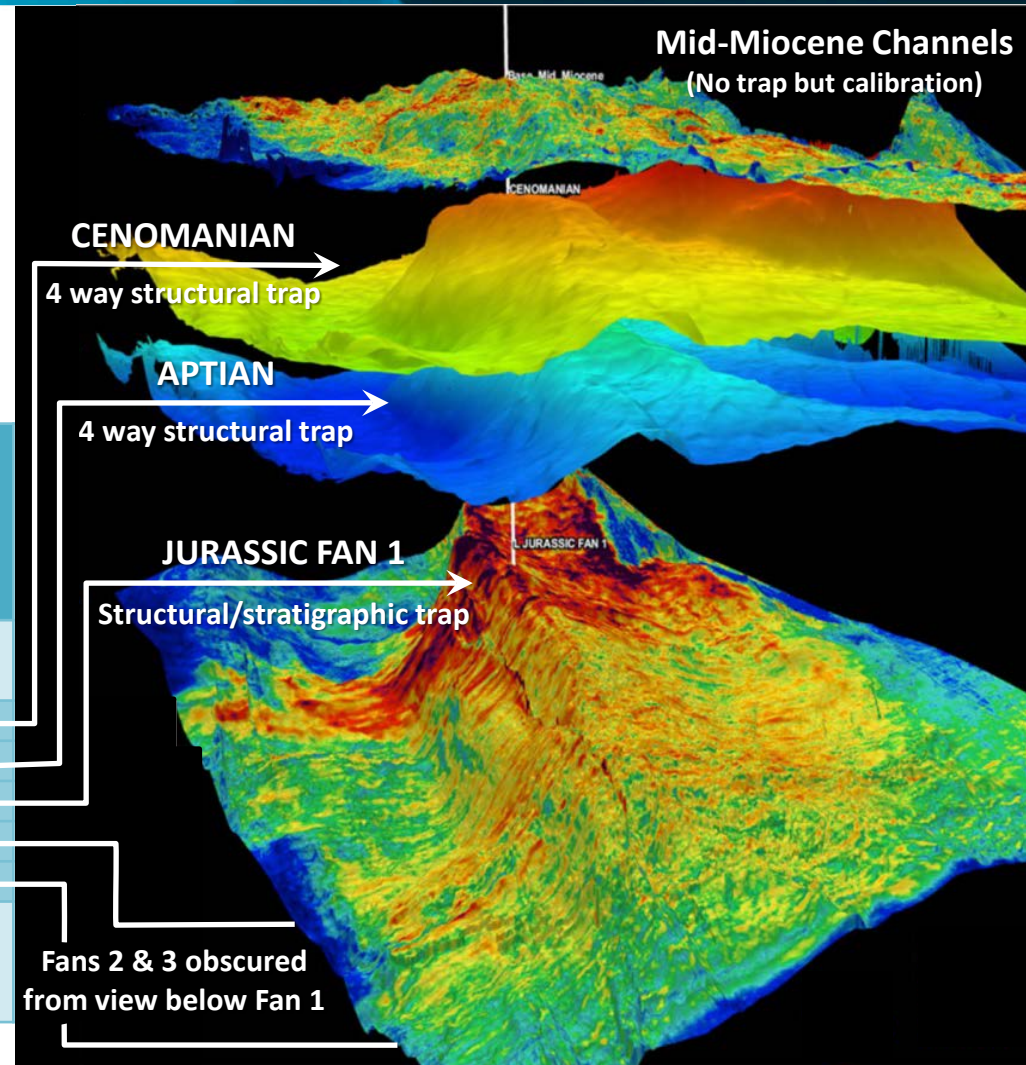
- Vertical alignment of multiple targets at Cretaceous (Cenomanian & Aptian) and Jurassic levels
- Large structural traps in the Cretaceous and giant stratigraphic and structural combined traps in the Jurassic
- Unique opportunity to test up to five targets with a single well

Ouanoukrim Prospective Interval	Gross Prospective Resources Unrisked (mmbo) ^{1,2}				Gross Prospective Resources risked (mmbo) ^{1,2}		Net Prospective Resources (mmbo) ^{1,2}
	Low	Best	High	Mean	POS	Mean Risked	Mean Unrisked
Cenomanian	9	39	95	47	23%	11	11
Aptian	42	238	680	309	30%	94	71
Lower Jurassic – Fan 1	84	450	1,290	588	13%	76	135
Lower Jurassic – Fan 2	21	79	189	95	12%	11	22
Lower Jurassic – Fan 3	60	306	820	385	12%	45	89
Total Recoverable prospective resources (aggregated, mmbo)³	216	1,112	3,074	1,424		237	328

Note 1 – PVD estimates are based on probabilistic estimation method as at 17/12/2014

Note 2 – POS refers to probability of geologic success

Note 3 – Arithmetic summation of probabilistic estimates



The estimated quantities of petroleum that may potentially be recoverable by the application of a future development project(s) relate to undiscovered accumulations. These estimates have both an associated risk of discovery and a risk of development. Further exploration appraisal and evaluation is required to determine the existence of a significant quantity of potentially moveable hydrocarbons.

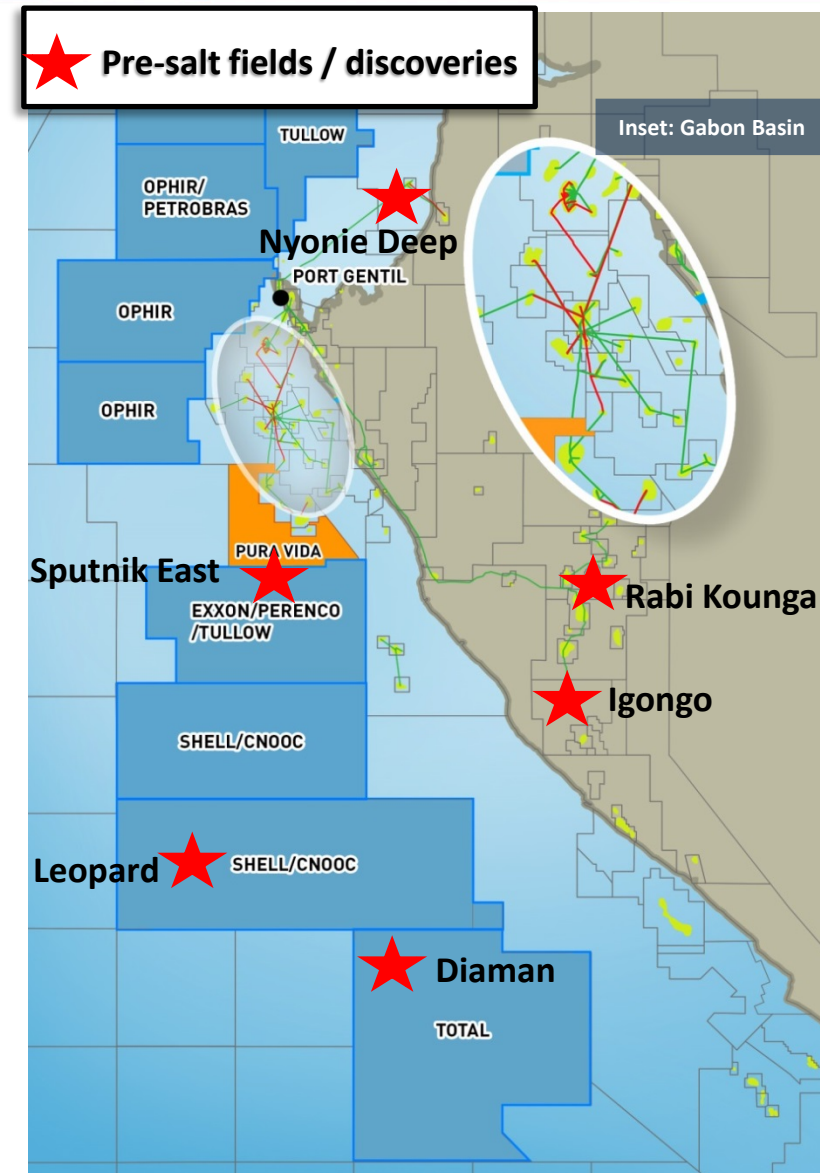
Nkembe, Offshore Gabon (100% interest)¹

In the Heart of a Proven Oil Basin

- 100% interest¹ and Operator
- Neighbouring Super Majors and producing oil fields
- Farm out underway to secure partner to fund seismic and drilling activity
- Recent discoveries show extension of pre-salt play throughout Gabon similar to Angola and Brazil
- Giant Rabi Kounga pre-salt oil field onshore 900 mmbo (peak production of 230,000 bopd)
- Recent pre-salt discoveries:

<i>Diaman</i>	<i>50m net gas/condensate column</i>
<i>Nyonie Deep</i>	<i>500 mmboe</i>
<i>Igongo</i>	<i>90m net oil & gas column</i>
<i>Leopard</i>	<i>200m net gas column</i>
<i>Sputnik East</i>	<i>300m net reservoir (non-commercial)</i>

- Nkembe block contains large pre-salt prospects, including Mouveni – de-risked by recent pre-salt discoveries



Nkembe, Offshore Gabon Multiple Opportunities

LOBA FIELD, LOBA DEEP & LEPIDOTE

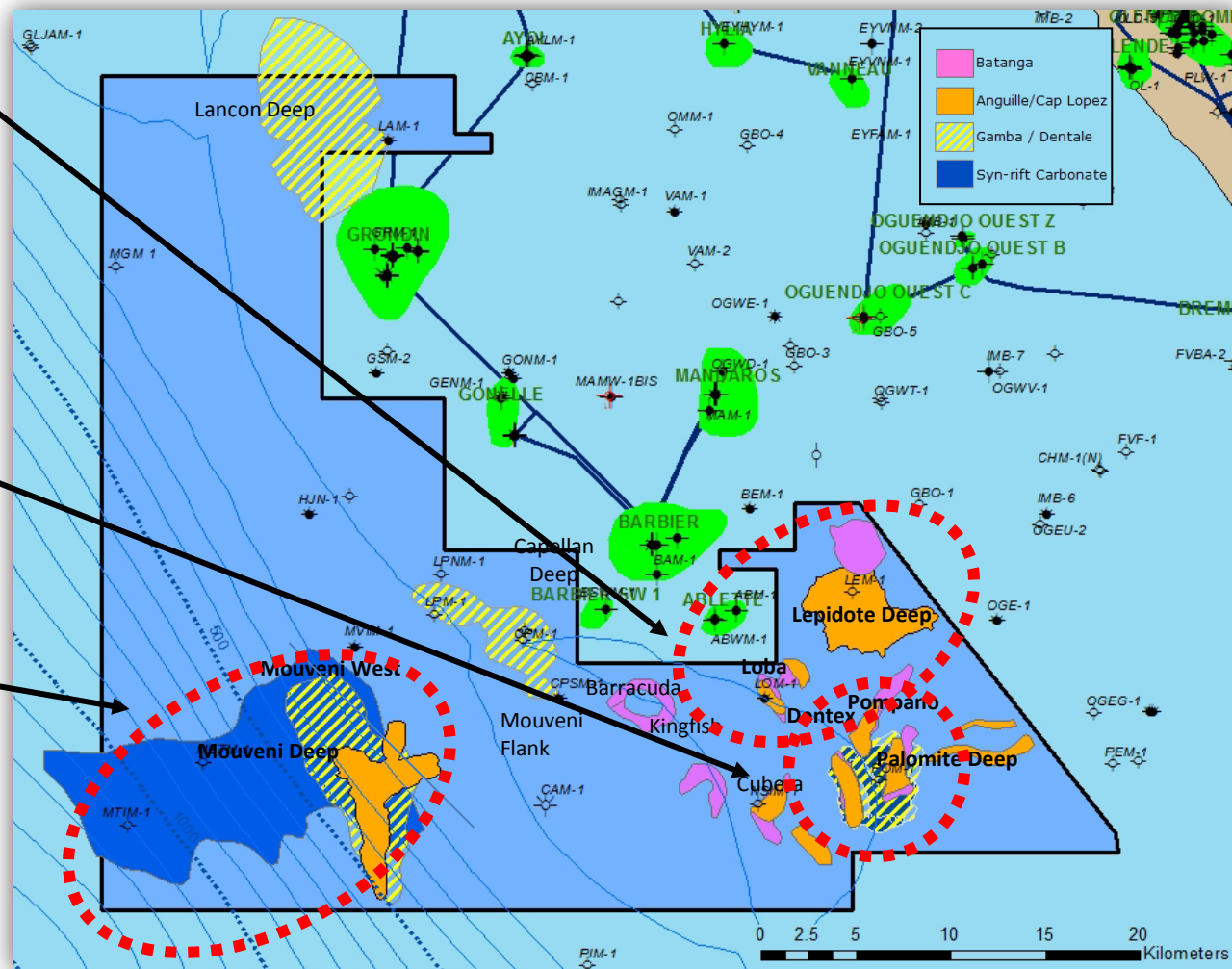
- Potential for combined development 'hub' around Loba discovery (10 mmbo)¹ connecting multiple fields
- Additional potential of Loba Deep (11 mmbo) and Loba East (10 mmbo)¹
- Nearby Lepidote prospect (65 mmbo)¹
- Proximate to infrastructure/pipelines

PALOMITE & POMPANO

- Possible to test multiple stacked plays with combined resource potential of 400 mmbo¹ with a single vertical well

MOUVENI WEST & DEEP

- Combined potential of 1,112 mmbo¹
- Possible to test stacked pre-salt potential with one well
- Analogous to pre-salt discoveries in Angola and Brazil



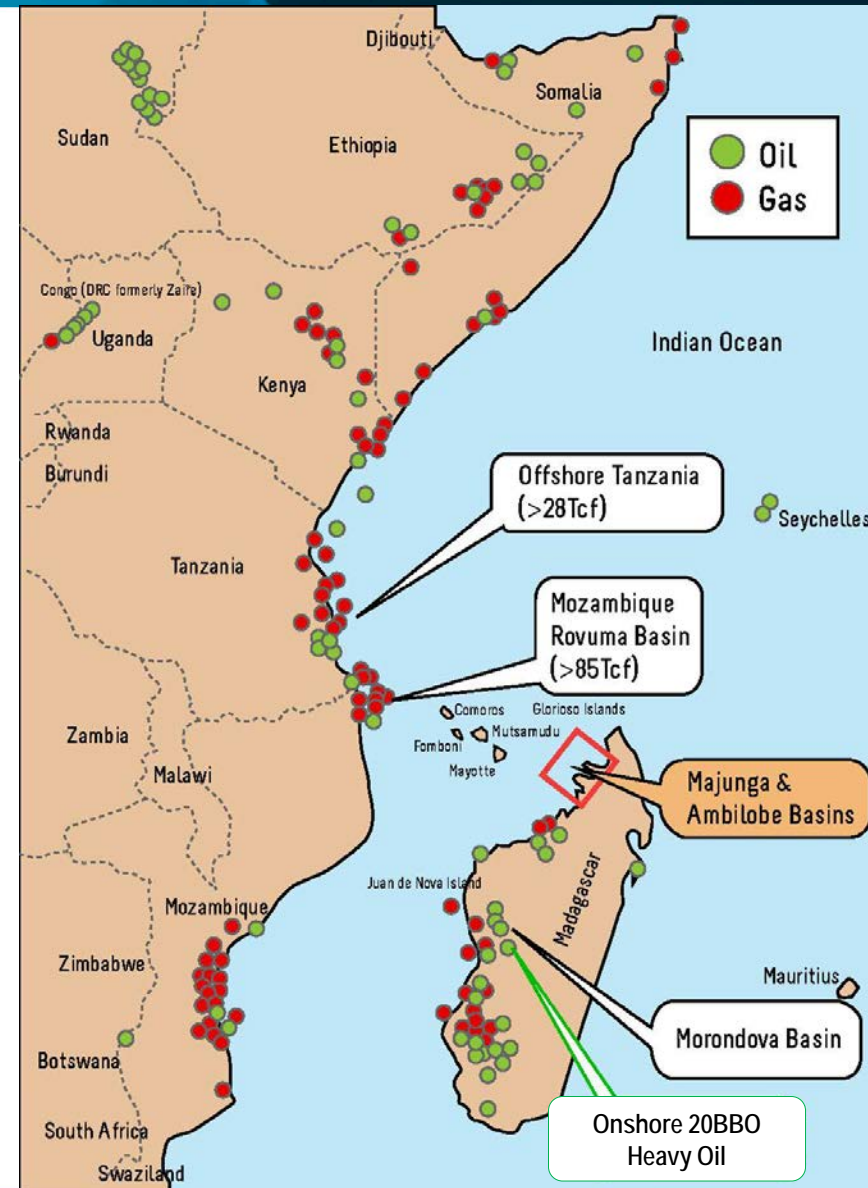
Note 1 - Resource volumes quoted are PVD estimates of gross mean prospective resources, refer ASX Announcement: 23 June 2014.

The estimated quantities of petroleum that may potentially be recoverable by the application of a future development project(s) relate to undiscovered accumulations. These estimates have both an associated risk of discovery and a risk of development. Further exploration appraisal and evaluation is required to determine the existence of a significant quantity of potentially moveable hydrocarbons.

Ambilobe, Offshore Madagascar (50% interest)

Large Strategic Footprint in East Africa

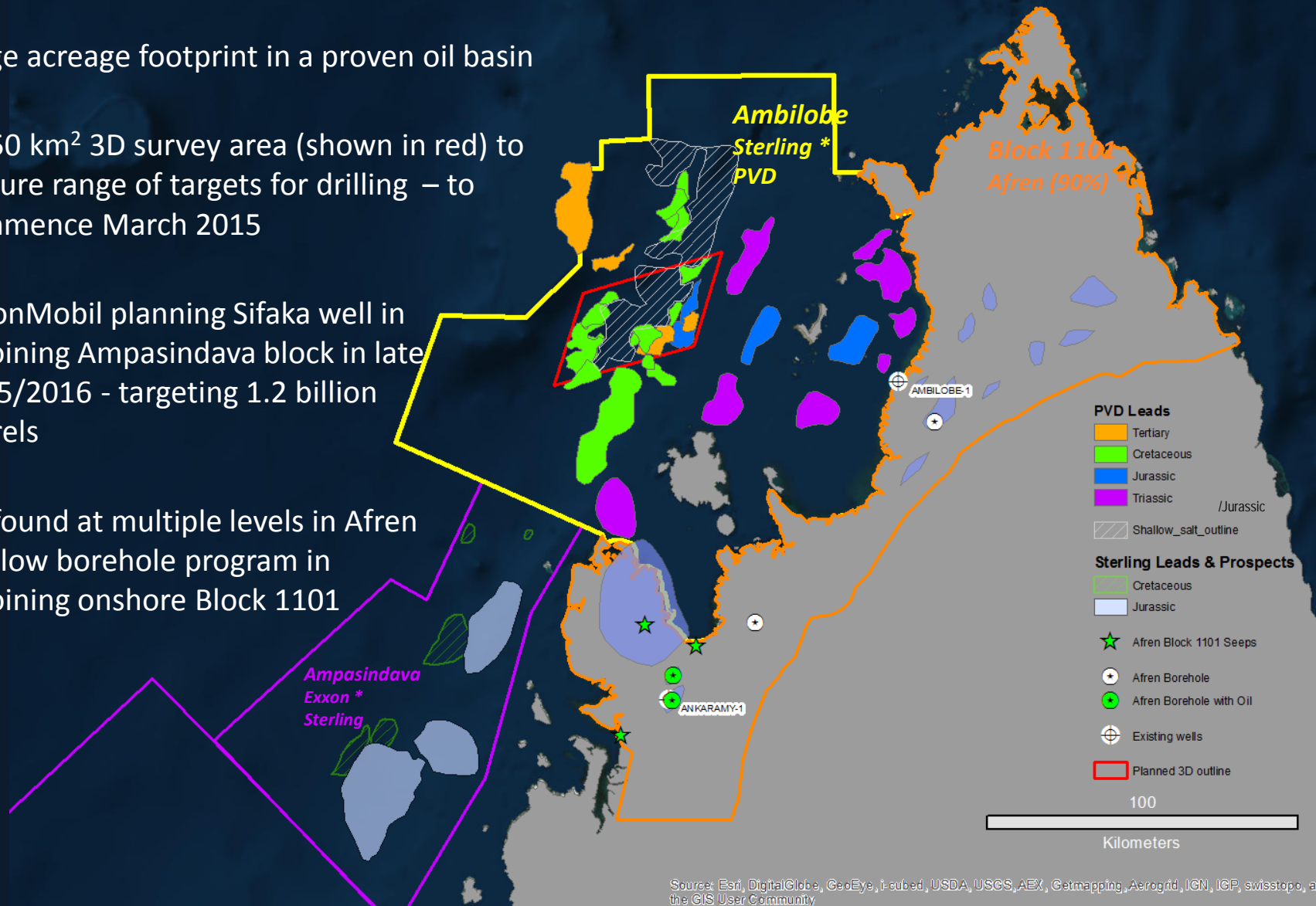
- Entry into prolific East African region
- 50% interest via farmin with Sterling Energy (Operator)
- Offshore extension of onshore oil potential
- Fully funded 1,250 km² 3D seismic survey about to commence
- 3D data will allow farmout process to be undertaken to secure an industry partner to fund drilling



Ambilobe, Offshore Madagascar

Activity

- ▶ Large acreage footprint in a proven oil basin
- ▶ 1,250 km² 3D survey area (shown in red) to mature range of targets for drilling – to commence March 2015
- ▶ ExxonMobil planning Sifaka well in adjoining Ampasindava block in late 2015/2016 - targeting 1.2 billion barrels
- ▶ Oil found at multiple levels in Afren shallow borehole program in adjoining onshore Block 1101





JEFF DOWLING, NON-EXECUTIVE CHAIRMAN

- Formerly Managing Partner at Ernst & Young in Perth, where a number of senior leadership roles were held, with a particular focus on the mining and oil and gas sectors.
- Over 35 years' experience in the professional services industry with significant experience in audit, risk management and finance gained during an extensive career at E&Y.
- Chairman of Sirius Resources, a nickel and gold explorer focused on high value mineral resources in Australia .
- Non-executive Director of Atlas Iron Limited and NRW Holdings Pty Ltd.



DAMON NEAVES, MANAGING DIRECTOR

- Founder of Pura Vida Energy.
- Formerly led business development, commercial and legal teams at mid-cap E&P company with operations in Asia-Pacific and Africa.
- Led several major acquisitions, many involving new entries in Africa and Asia.
- Established highly profitable Australian domestic gas business.
- Upstream project management experience for NW Shelf crude, condensate and gas production.
- Legal and corporate advisory background.



RIC MALCOLM, NON-EXECUTIVE DIRECTOR

- Professional geoscientist with 33 years of varied oil and gas experience within seven international markets.
- Began career as a Petroleum Geologist with Woodside in Perth, Australia.
- Spent 10 years with Ampolex Limited as a Senior Explorationist and then Exploration Manager in Western Australia and Asset Manager for Northern and Eastern Australia.
- Previously held the position of Managing Director with OMV (UK) Limited, one of Europe's leading oil and gas companies.
- Between 2008-2013 was CEO of Gulfsands Petroleum plc, AIM listed oil and gas production, exploration, and development company with operations in Syria, Iraq, Morocco, Colombia, Tunisia and the USA.

Management Team



ANDREW MORRISON, Exploration Manager

- Over 30 years' experience in the oil and gas industry in both a technical and managerial capacity.
- Broad base of geological knowledge, particularly through Saharan and Sub-Saharan Africa.
- Particular expertise in evaluating the potential of salt plays, which are prominent within Pura Vida's portfolio.
- Significant exposure to exploration, appraisal and development from an operating capacity.



DORTE MACRAE, Senior Geophysicist

- 13 years' experience in the oil and gas industry in a variety of basin and geological settings around the world.
- Substantial experience in prospect maturation, resource estimation and risking and well planning.
- Significant experience of Brazil pre-salt and West Africa (Angola) post-salt plays.
- Held senior technical and team leader roles with Maersk Oil.



BEVAN TARRATT, Chief Financial Officer

- Accounting industry background focused on small/mid cap resource companies.
- Equity markets experience with several Australian broking firms.
- Managed IPOs, secondary raisings and re-structuring of numerous listed companies.
- Current and previous Director of a number of Australian public companies.



TIM CARTER, Geologist

- 10 years' experience in the oil and gas industry.
- 7+ years working at Woodside Energy Ltd as exploration geoscientist.
- Broad range of technical experience, including new ventures, prospect maturation and risking, resource estimation and well drilling operations.



DENNAE LONT, Company Secretary

- Substantial governance experience in the oil and gas industry and with other Australian public companies.
- Extensive corporate paralegal experience.
- Member of the Governance Institute of Australia.
- Previously the Company's Deputy Company Secretary.

Corporate Snapshot

CAPITAL STRUCTURE

Issued Capital	
Ordinary Shares (ASX:PVD)	147.38m
Unquoted securities	27.42m
Market Capitalisation	
Undiluted (at \$0.40/share)	\$59.00m
Fully diluted (at \$0.40/share)	\$69.92m
Financial Position	
Cash (as at 31 December 2014)	\$22.76m ¹

NET RESOURCES²

Mazagan Permit, Offshore Morocco (23%)	
Mean Prospective Resource	1,614 mmbo ³
Nkembe Block, Offshore Gabon (80%)	
P50 Contingent Resource	16 mmbo ⁴
Mean Prospective Resource	1,346 mmbo ⁵

Note 1 - Includes money held in joint operating account for Madagascan 3D seismic program

Note 2 - All volumes are estimated recoverable resources

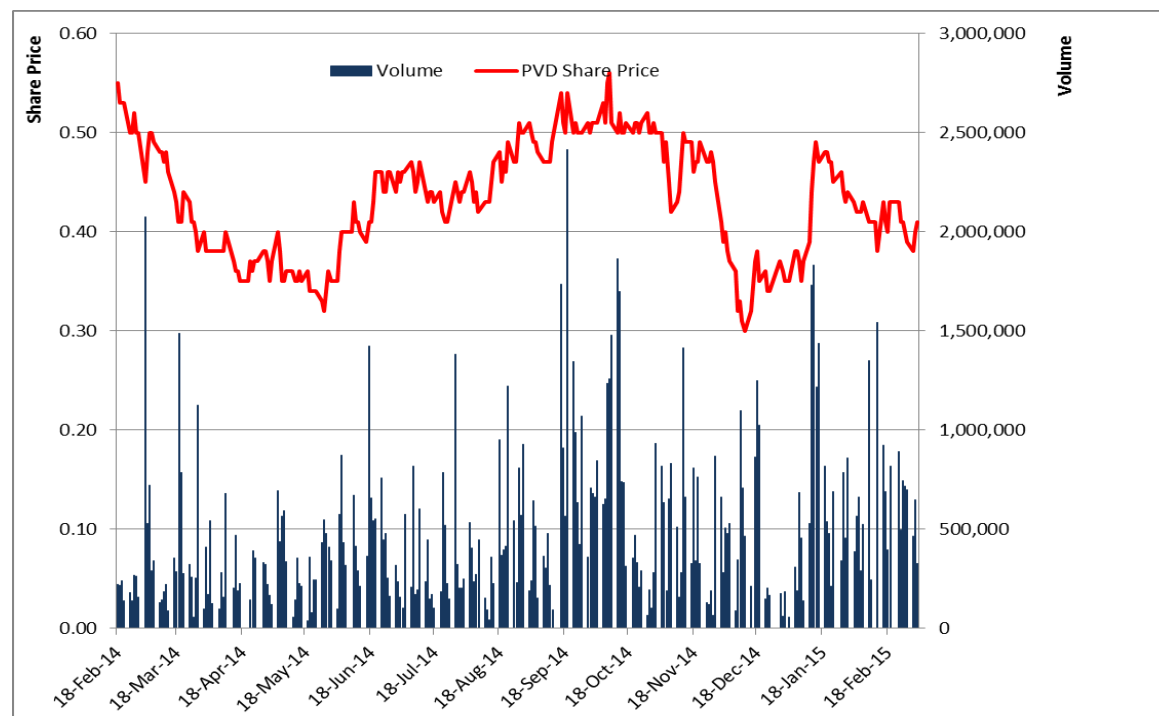
Note 3 - ASX Announcement: 21 September 2012

Note 4 - ASX Announcement: 6 March 2013

Note 5 - ASX Announcement: 23 June 2014

RESEARCH COVERAGE

Broker	Analyst	Date
Hartleys	Simon Andrew: +61 8 9268 3020	18 March 2015
Mirabaud	Tim Hurst-Brown: +44 20 7866 0092	19 December 2014
Euroz	Michael Skinner: +61 8 9488 1431	17 December 2014
GMP	Ritesh Gaggar : +44 207 016 1902 Alessandro Pozzi: +44 207 647 2819	27 January 2015



Contacts & Disclaimer

Contacts



Mr Damon Neaves
Managing Director

T: +61 8 9226 2011
F: +61 8 9226 2099
E: dneaves@puravidaenergy.com.au

Level 3, 89 St Georges Terrace
Perth WA 6000



Rupert Dearden & John Gardner
T: +61 8 6160 4903
E: rdearden@magnus.net.au
E: jgardner@magnus.net.au

Suite 3.02, Level 3, 1 Alfred Street
Sydney NSW 2000 (Head Office)
Unit 13, Ground Floor, 38 Colin Street
West Perth, WA 6005

Disclaimer

Certain statements contained in this presentation, including information as to the future financial or operating performance of Pura Vida Energy NL (Pura Vida) and its projects, are forward-looking statements. Such forward looking statements: (i) are necessarily based upon a number of assumptions and estimates that are inherently subject to significant technical, business, economic, competitive, political and social uncertainties and contingencies; (ii) involve known and unknown risks and uncertainties that could cause actual events or results to differ materially from estimated or anticipated events or results; and (iii) may be based on assumptions and estimates related to future technical, economic, market, political, social and other conditions. Pura Vida disclaims any intent or obligation to update publicly any forward-looking statements, whether as a result of new information, future events or otherwise. All forward-looking statements made in this presentation are qualified by the foregoing cautionary statements. Investors are cautioned that forward-looking statements are not guarantees of future performance and accordingly investors are cautioned not to rely on forward-looking statements due to the inherent uncertainty therein.

Prospective Resource Estimates Cautionary Statement

The estimated quantities of petroleum that may potentially be recoverable by the application of a future development project(s) relate to undiscovered accumulations. These estimates have both an associated risk of discovery and a risk of development. Further exploration appraisal and evaluation is required to determine the existence of a significant quantity of potentially moveable hydrocarbons.

Prospective Resources

Prospective resource estimates in this presentation are prepared as at 31 August 2012 (*reference: ASX announcement 21 September 2012*), 6 March 2013 (*reference: ASX announcement 6 March 2013*), 23 June 2014 (*reference: ASX announcement 23 June 2014*) and 17 December 2014 (*reference: ASX announcement 17 December 2014*). The resource estimates have been prepared using the internationally recognised Petroleum Resources Management System to define resource classification and volumes. The resource estimates are in accordance with the standard definitions set out by the Society of Petroleum Engineers, further information on which is available at www.spe.org. The estimates are unrisks and have not been adjusted for both an associated chance of discovery and a chance of development. The 100% basis and net to Pura Vida prospective resource estimates includes Government share of production.

Pura Vida is not aware of any new information or data that materially affects the assumptions and technical parameters underpinning the estimates of the prospective resources and the relevant market announcements referenced continue to apply and have not materially changed.

Persons compiling information about hydrocarbons

The resource information contained in this presentation for the Mazagan permit, Morocco (other than the Ouanoukrim prospect) have been prepared by DeGolyer & MacNaughton. DeGolyer & MacNaughton is a consultant of the Company and has consented to the inclusion of the resource estimates in the form and context in which they are included.

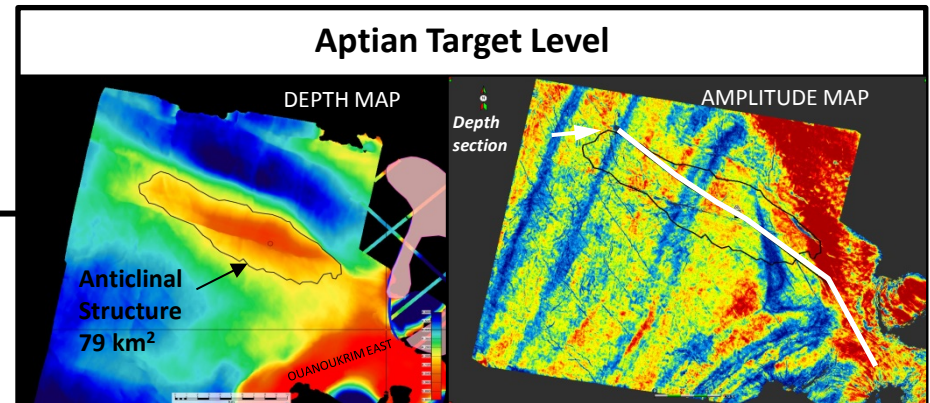
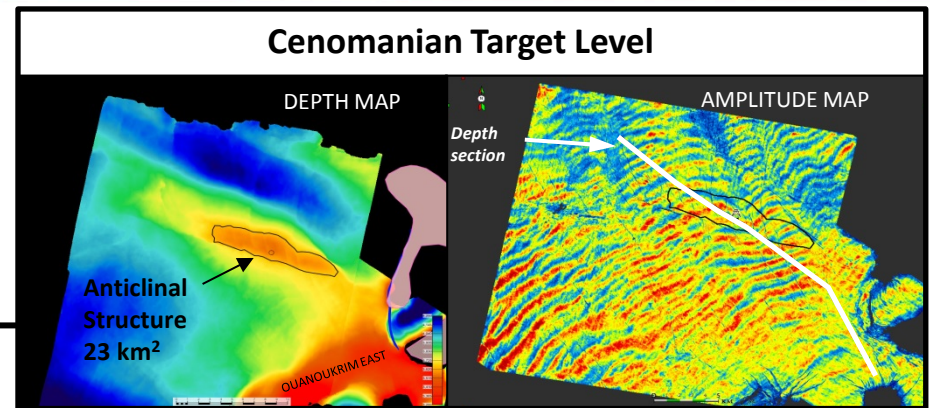
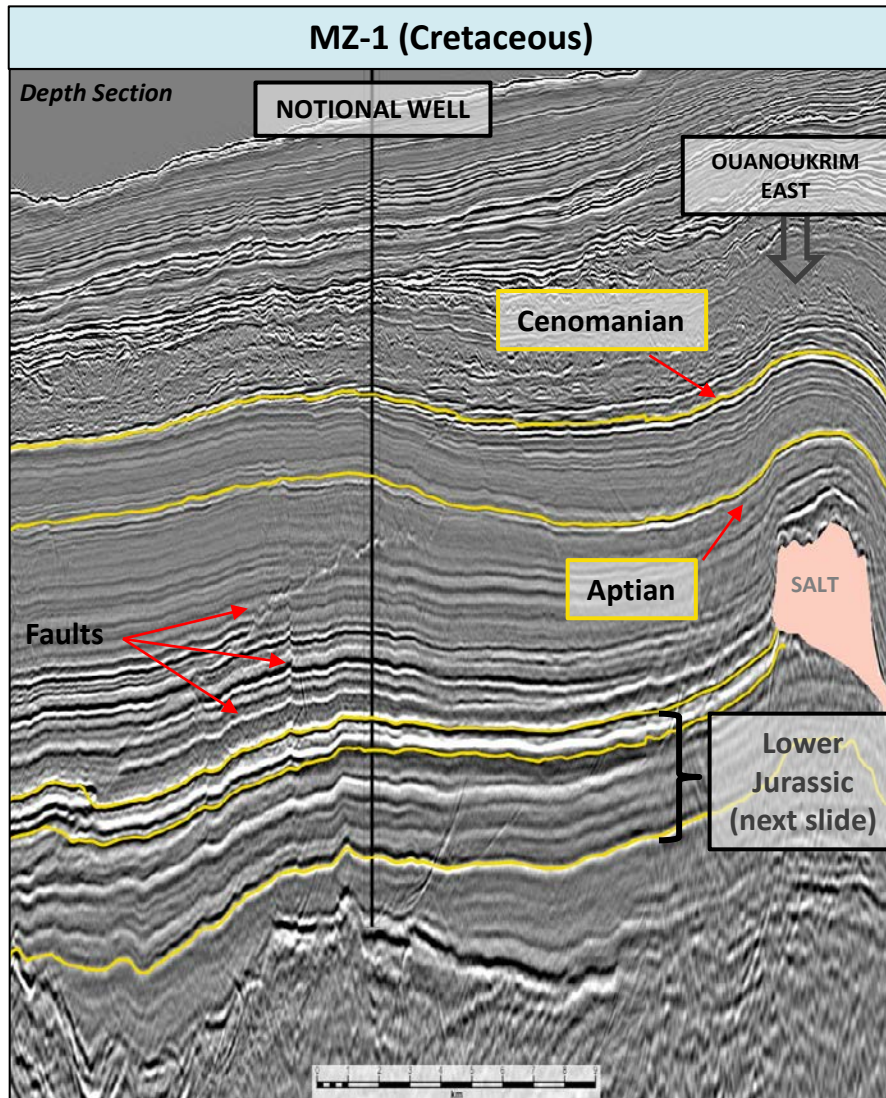
The resource estimates contained in this presentation for the Ouanoukrim prospect and the Nkembe block, Gabon have been prepared by Mr Andrew Morrison BSc. Geology (Hons) a Geologist who has over 30 years of experience in petroleum geology, geophysics, prospect generation and evaluations, prospect and project level resource and risk estimations and is a member of the Society of Petroleum Engineers. Mr Morrison is a full time employee of the Company and has consented to inclusion of the resource estimates in the form and context in which they are included.

APPENDICES

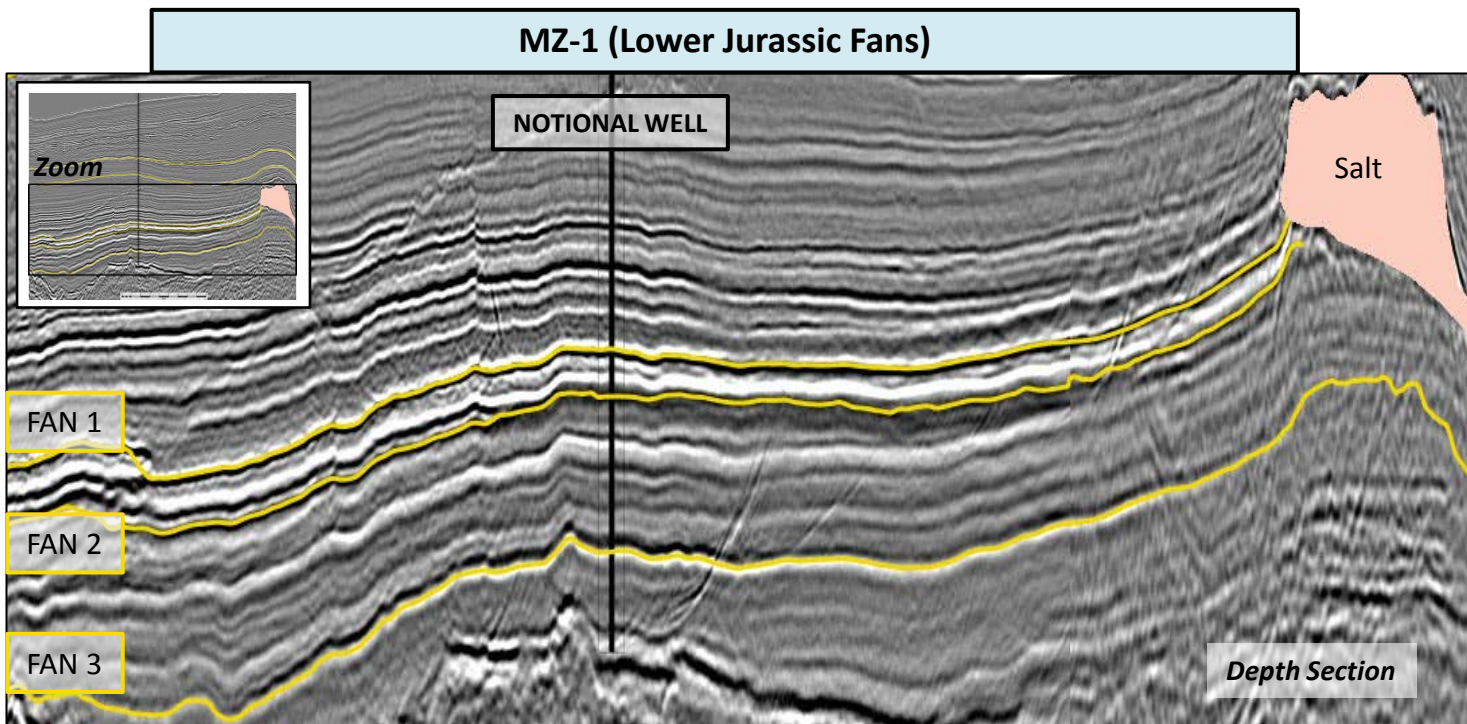


Mazagan, Offshore Morocco

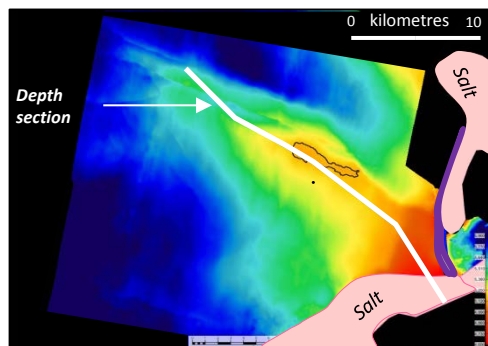
MZ-1 Cretaceous Targets



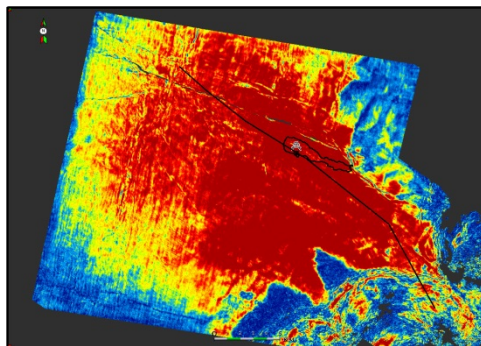
- MZ-1 has multiple stacked anticlinal structures that have significant aerial extents (Aptian, 79 km² Cenomanian, 23 km²), both of which have significant vertical relief
- Seismic imaging indicates deep water sediment fairways that extend across the prospective area, interpreted to be extensive fields of sand waves that are common in deep water settings (e.g. productive in Brazil & GoM)
- Charging of these structural traps with hydrocarbons can occur vertically via faults that are clearly evident on seismic
- Cretaceous has a combined mean prospective resource potential of 356 mmbbl (gross aggregated volumes, un-risked)¹



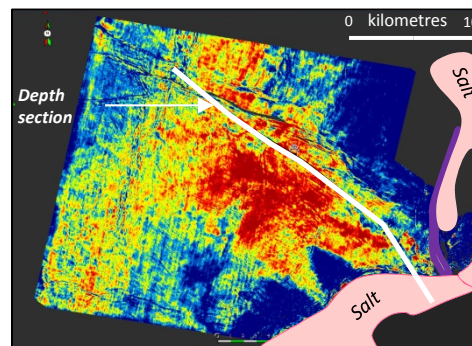
- MZ-1 has multiple stacked deep water fans within the Lower Jurassic interval that are inter-bedded within the assumed source rocks
- Each prospect level requires a combination of both structural and stratigraphic trapping
- These fans are extensive in area resulting in a combined mean prospective resource potential of 1,068 mmbo (gross, aggregated volumes, un-risked)¹



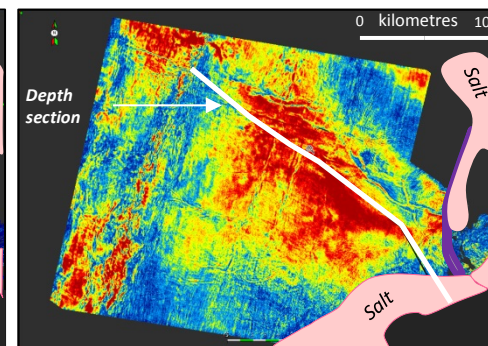
**FAN 1
DEPTH MAP**



**FAN 1
AMPLITUDE MAP**



**FAN 2
AMPLITUDE MAP**



**FAN 3
AMPLITUDE MAP**

1.3 Billion Barrel Potential to PVD, Multiple Play Types

- Total net mean prospective resource of 1,346 mmbo¹
- Multiple play types on the block with wide variety of exploration plays associated with salt basins
- Significant potential in the pre-salt in proven Gamba/Dentale formation and untested syn-rift carbonates

The estimated quantities of petroleum that may potentially be recoverable by the application of a future development project(s) relate to undiscovered accumulations. These estimates have both an associated risk of discovery and a risk of development. Further exploration appraisal and evaluation is required to determine the existence of a significant quantity of potentially moveable hydrocarbons.

Nkembe Permit		Gross prospective resources (mmbo, unrisks) ^{2,3}				Net prospective resources (mmbo) ^{2,3}
Prospect Name	Target	Low	Best	High	Mean	Un-risked mean
Loba Discovery	Batanga/P. Clairette	6	10	14	10	8
Loba East	Batanga/P. Clairette	6	10	15	10	8
Loba Deep	L. Anguille	7	11	16	11	9
Loba Aggregated					31	25
Cubera	Batanga	6	14	26	15	12
	L. Anguille/Azile	6	10	15	10	8
Cubera Aggregated					25	20
Lepidote Deep	L. Azile/Cap Lopez	25	60	114	65	52
Pompano	Batanga/P. Clairette	3	5	10	6	5
	L. Anguille	7	15	26	16	13
	Cap Lopez	21	43	74	46	37
Pompano Aggregated					68	55
Dentex	Batanga/P. Clairette	9	18	34	20	16
	L. Anguille	14	26	43	27	22
Dentex Aggregated					47	38
Mouveni West	Gamba	23	50	91	54	44
	Dentale	65	245	627	304	243
Mouveni West (Deep)	Synrift Carbonates	152	608	1,506	754	603
Mouveni West Aggregated					1,112	890
Palomite Deep	Gamba	20	34	51	36	29
	Dentale	52	160	353	185	148
	Synrift Carbonates	58	105	172	111	89
Palomite Deep Aggregated					332	266
Total⁴		480	1,424	3,187	1,680	1,346

Note 1 - ASX Announcement: 23 June 2014

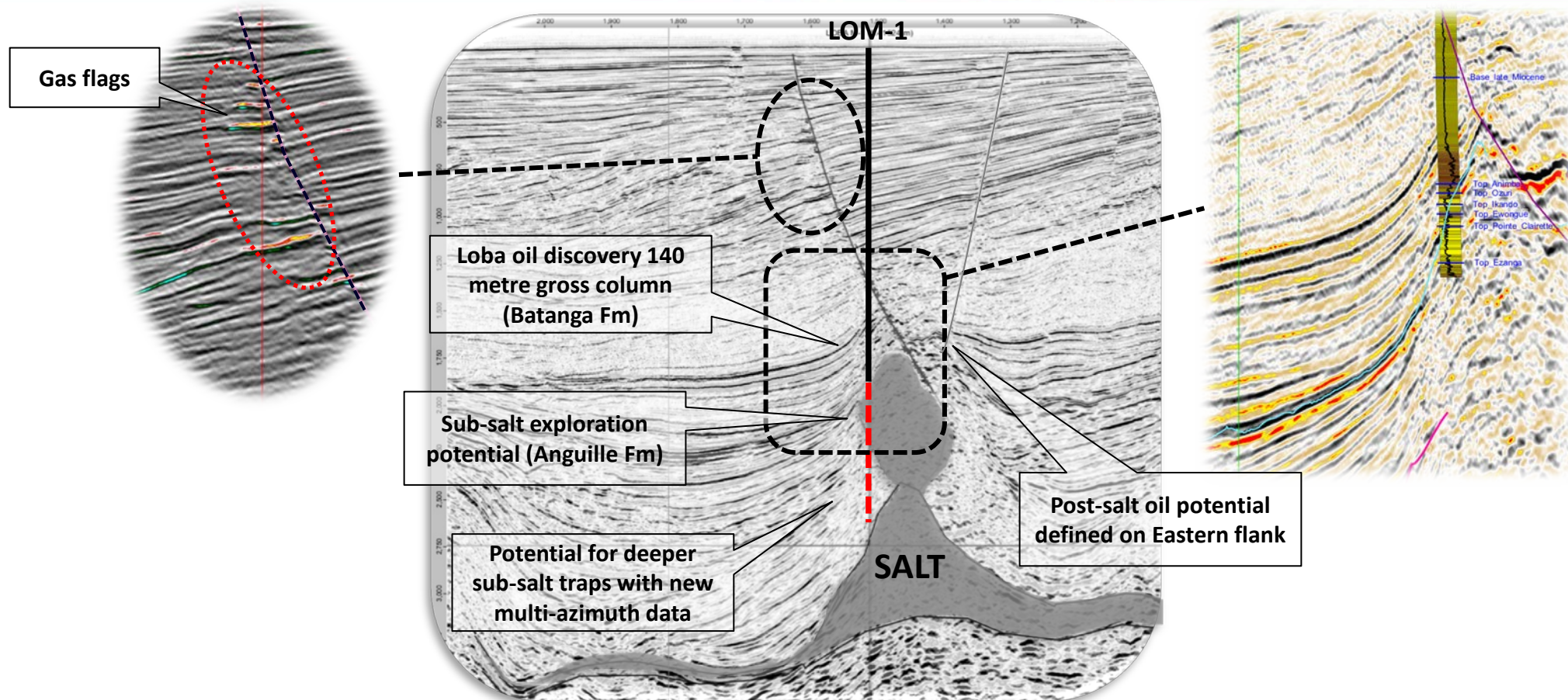
Note 2 - Resource estimates are based on probabilistic estimation method as at 23 June 2014

Note 3 - POS refers to probability of geological success

Note 4 - Arithmetic summation of probabilistic estimates

Nkembe, Offshore Gabon

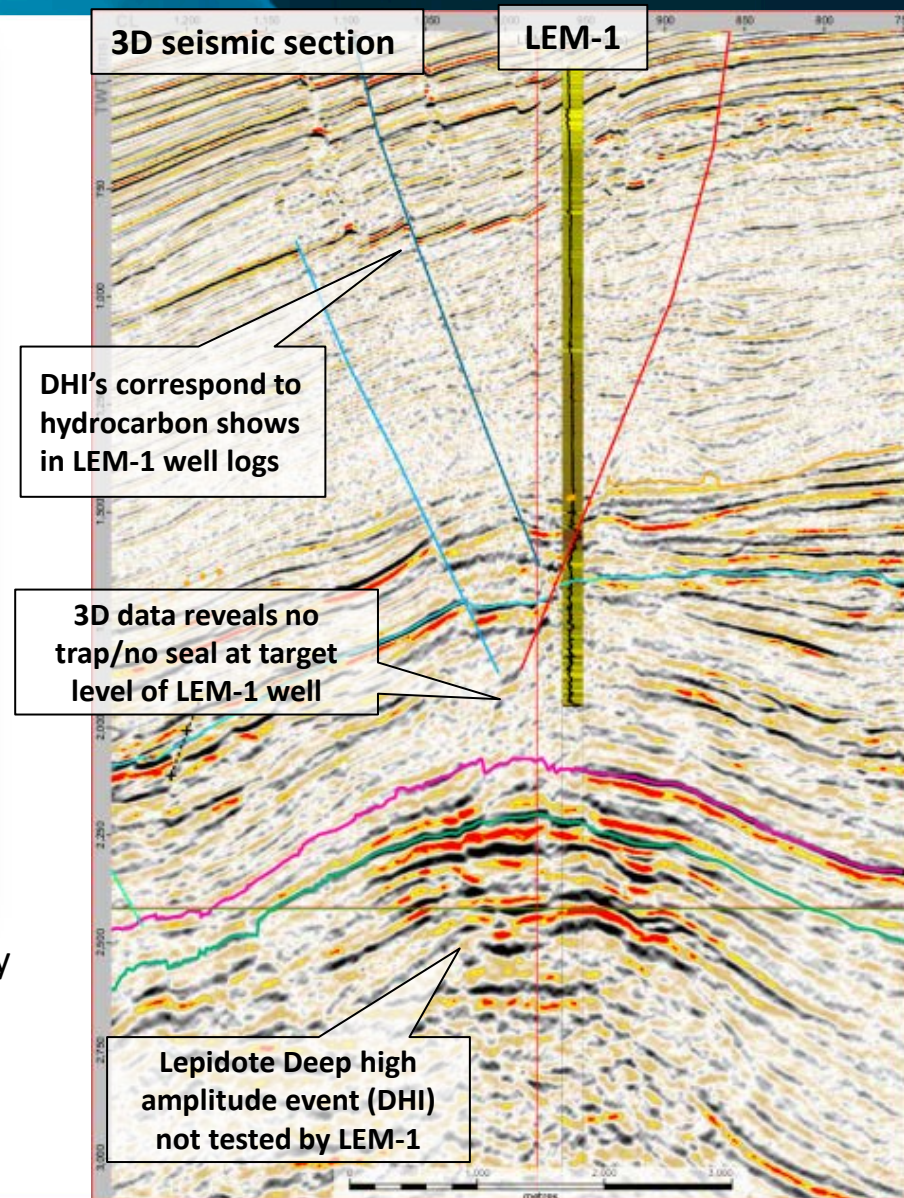
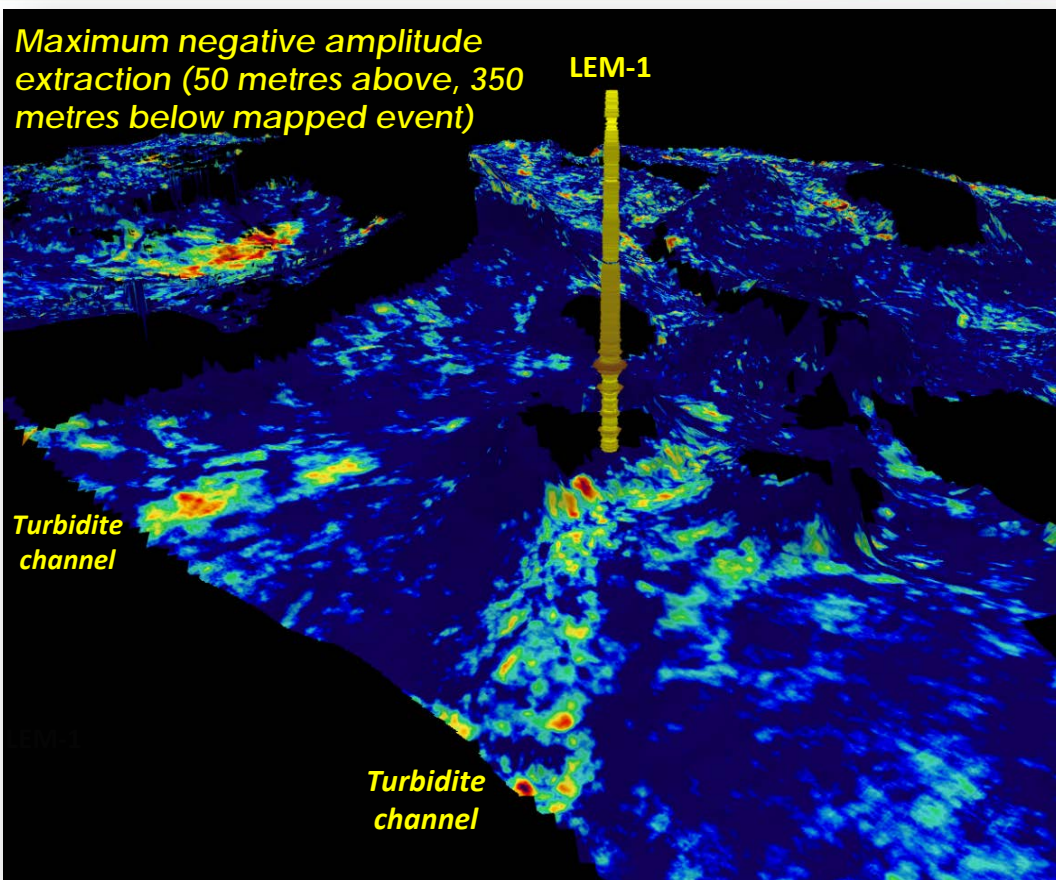
Loba Field & Loba Deep



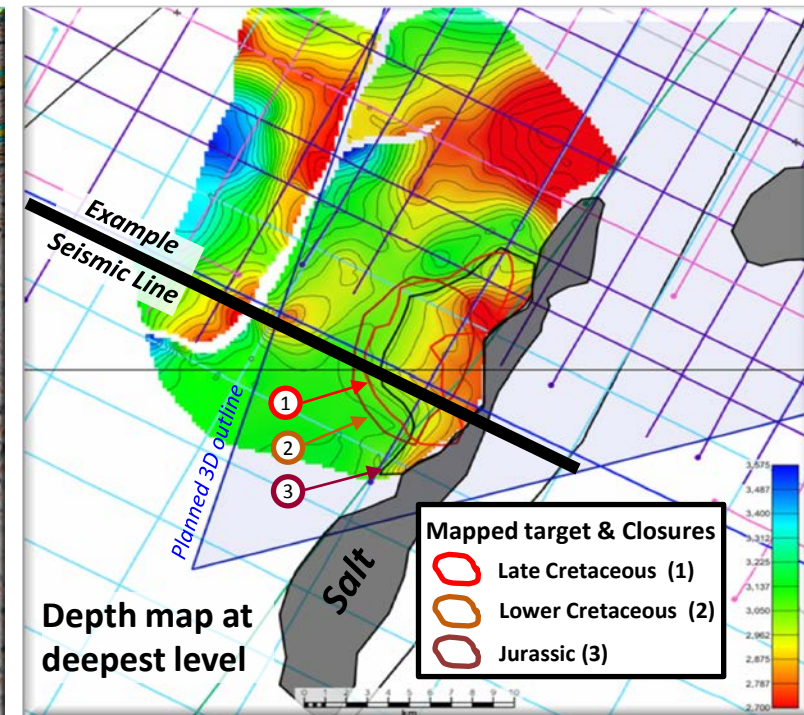
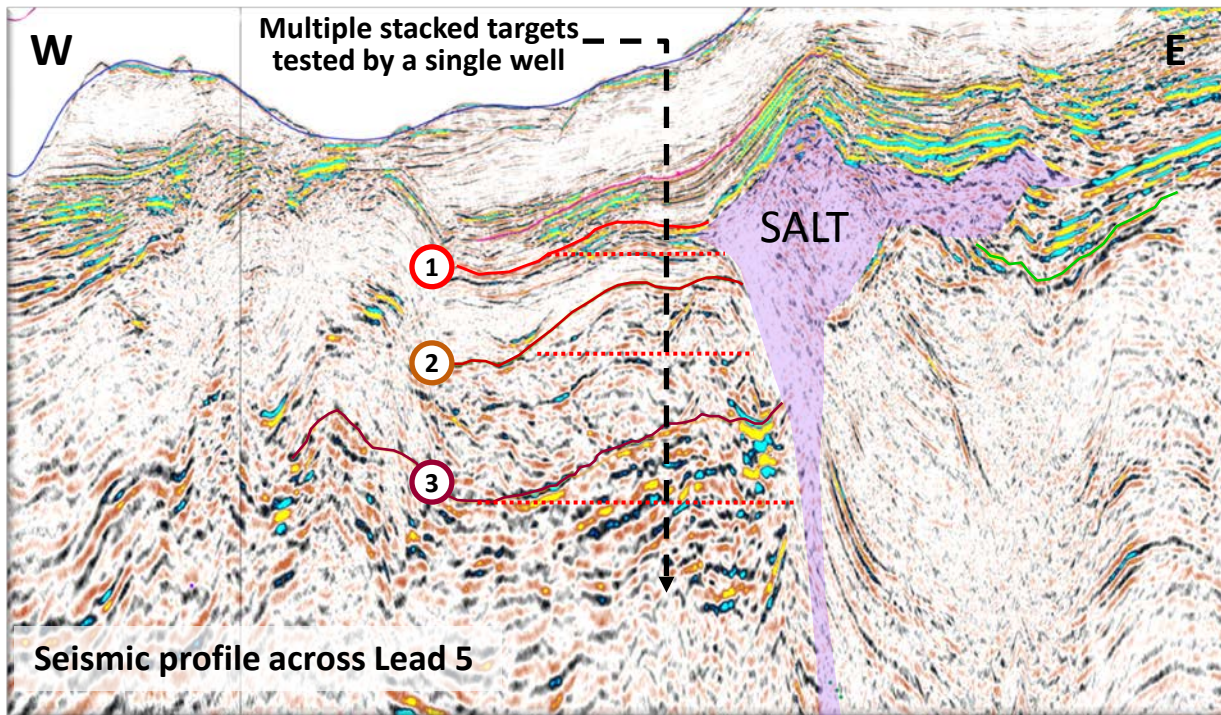
- The Loba Marine-1 well was drilled in 1976 and discovered a 140 metre oil column (gross)
- Potential for deeper sub-salt and pre-salt reservoirs
- Loba Marine-1 did not flow on DST but recovered 27° API oil by reverse circulation - similar quality oil to the producing fields to the north

Nkembe, Offshore Gabon

Lepidote Deep

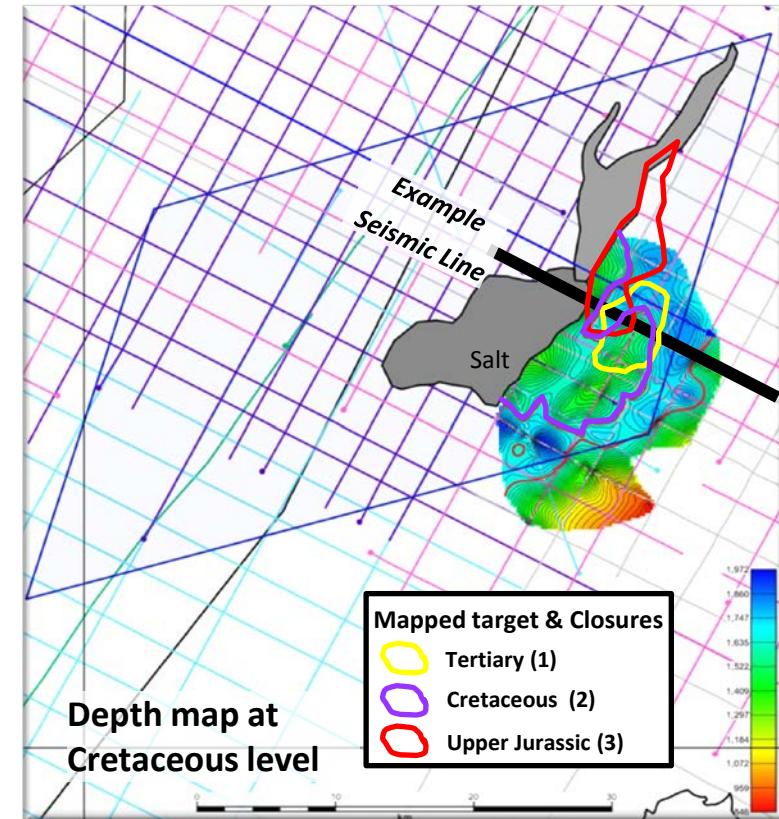
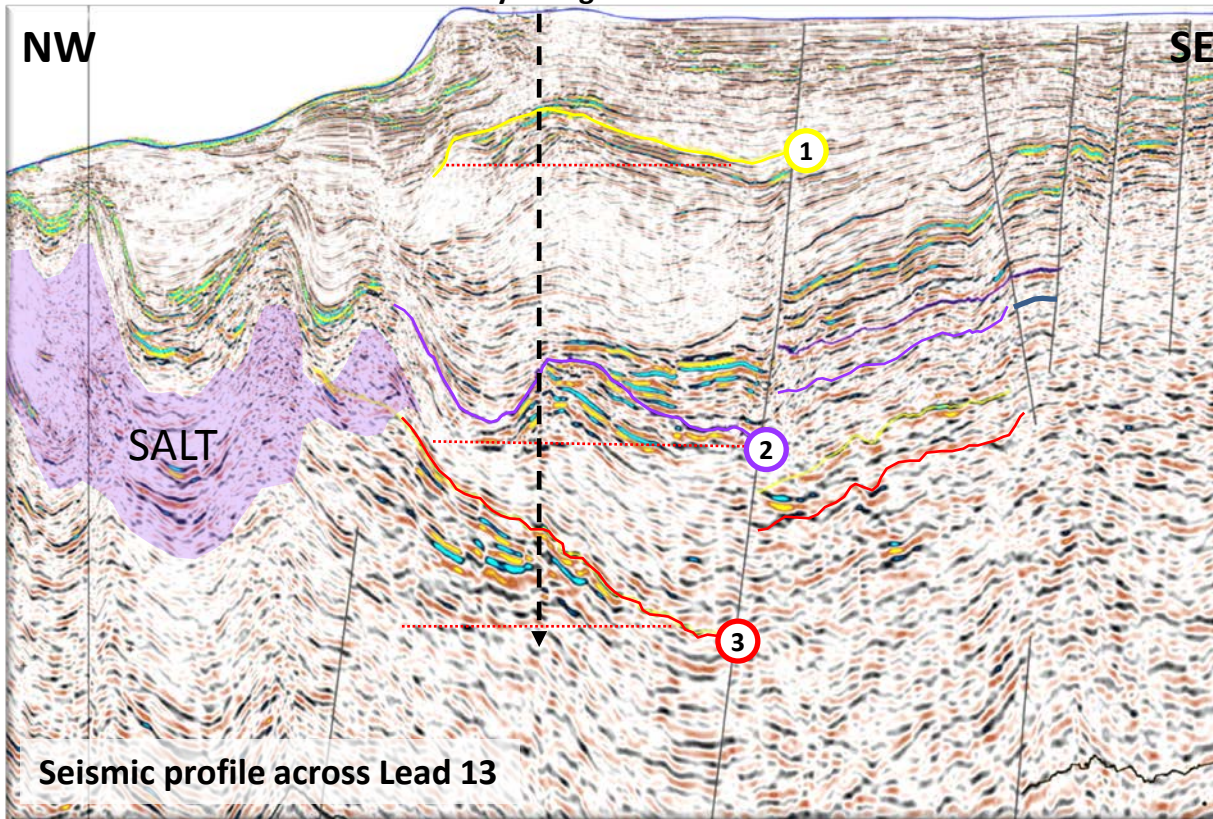


- The Lepidote M-1 well (LEM-1) was drilled in 1973 on 2D data only
- LEM-1 encountered good oil shows but did not reach the high amplitude channelised interval mapped on 3D by PVD (Lepidote Deep prospect)
- Lepidote Deep - 65 mmbo¹ mean prospective resource



- 3-way dip closure traps with updip seal against salt at multiple levels
- Closure range from 35-43 km²
- Currently defined on 2D data only - new 3D data will significantly enhance image quality
- Multiple targets in Cretaceous and Jurassic can be tested by a single vertical well
- Potential sub-salt prospectivity on other side of salt body to be defined on new 3D seismic

Multiple stacked targets
tested by a single well



- Shallow 4-way closure and deeper 3-way closure trapped against salt
- Closure range from 20-80 km²
- Currently defined on 2D data only – new 3D data will significantly enhance image quality
- Multiple targets in Tertiary, Cretaceous and Jurassic can be tested by a single vertical well
- Potential for prospectivity below salt to be defined on new 3D seismic