



KALGOORLIE

FOCUSED | FUNDED | ACTIVE EXPLORATION NICKEL & GOLD IN WESTERN AUSTRALIA

Proactive Investors Presentation, 24-25 March 2015

David Crook
Managing Director
ASX: PIO

Immediate Investment Case

Drilling in the Albany Fraser Orogen Now

Peer Companies have seen appreciable share price improvement as work programs proceed:

RMR 60% over 3 months

MRD 250% + over 3 months

MAT 40% over 1 month

WIN 380% over 2 months



Corporate Snapshot

FOCUSED

- Western Australia-focused explorer
- Projects in world class Fraser Range Nickel Province and Eastern Goldfields

FUNDED

- \$3.0m in cash approx
*\$1.1m capital raise completed March 2015
[\$0.5m placement, \$0.6m SPP]*
- Q1 budget ~\$0.8 million

ACTIVE

- Focus on targeted exploration and discovery in key commodities
 - Nickel in Fraser Ranges
 - Nickel & Gold in Eastern Goldfields

Current share price	1.8 cents
Shares on issue	678.7 million
Unlisted options	45 million
12-month range	0.8 – 3.0 cents
Cash (approx)	\$3.0 million
Market capitalisation	\$12.2 million



A Well-Credentialed Board



Craig McGown – Chairman (Finance)

- An investment banker with over 35 years' experience consulting to companies in Australia and internationally, particularly in the natural resources sector.
- The former Chairman of DJ Carmichael and currently with New Holland Capital.



David Crook – Managing Director (Geology)

- Founding Managing Director since 2003.
- A geologist with over 30 years' experience in the mining industry, including senior exploration, mining and management roles with a number of Australian and international companies.
- 25 years experience in the Kalgoorlie District



Allan Trench – Non-Executive Director (Geophysics, Management, Academia)

- A mineral economist, geophysicist and business management consultant.
- Professor CET at UWA and Curtin Graduate Business School.
- Perth representative CRU Strategies.



Wayne Spilsbury – Non-Executive Director (Geology)

- A geologist with over 35 years of experience including 28 years with Teck Cominco Limited - former General Manager, Exploration – Asia Pacific.
- Has worked on gold and base metal projects in Western Canada, the United States, Asia and Australia.

And key consultants

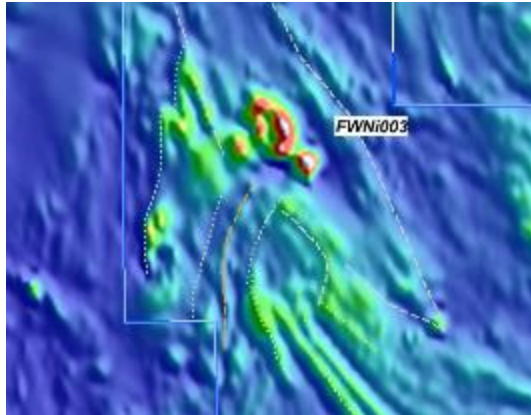
Dr Nigel Brand

- WMC, Anglo American, Xstrata, ioGeochemistry, Geochemical Services. Worked with Pioneer for 2 years.

Don Huntly

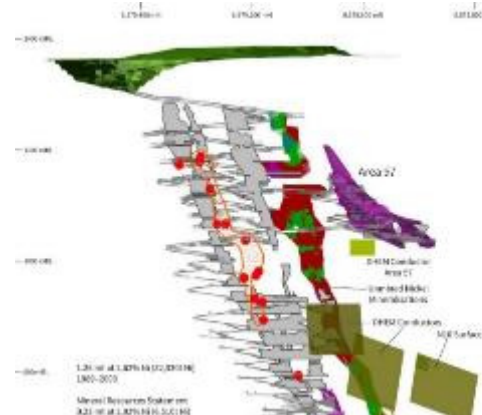
WMC, Jubilee, Xstrata, Endeavour Geoscience. Worked with Pioneer for 2 years.

Exploration Strategy has focus, but also includes “Plan B”



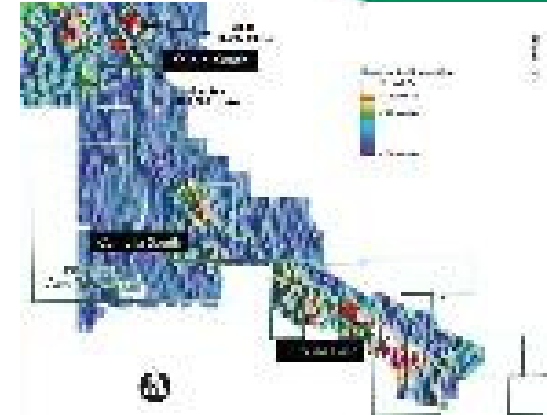
Fairwater Nickel Project

- Albany Fraser Orogen in south east WA
- Hottest exploration precinct
- Priority FWNi003 target
- Exploring for Nova lookalike nickel sulphide deposits
- **Drilling currently underway**



Blair Nickel Mine

- Part of Golden Ridge Project in Eastern Goldfields
- Drilling to commence this month
- Concept Study for re-opening mine commenced



Acra Gold Project

- Eastern Goldfields location
- Previous focus on nickel – underexplored for gold
- Multiple High grade gold intercepts & targets over 20km strike length
- Recognised by CRC targeting specialists





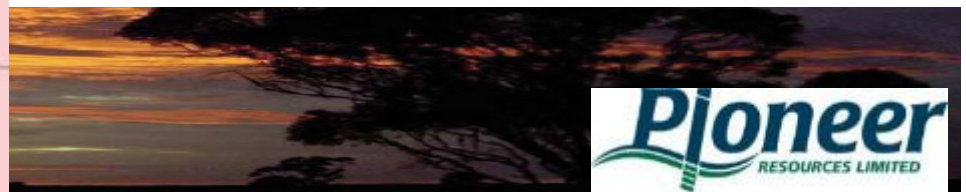
Geographic Focus: Fraser Ranges and Eastern Gold Fields

Fraser Ranges

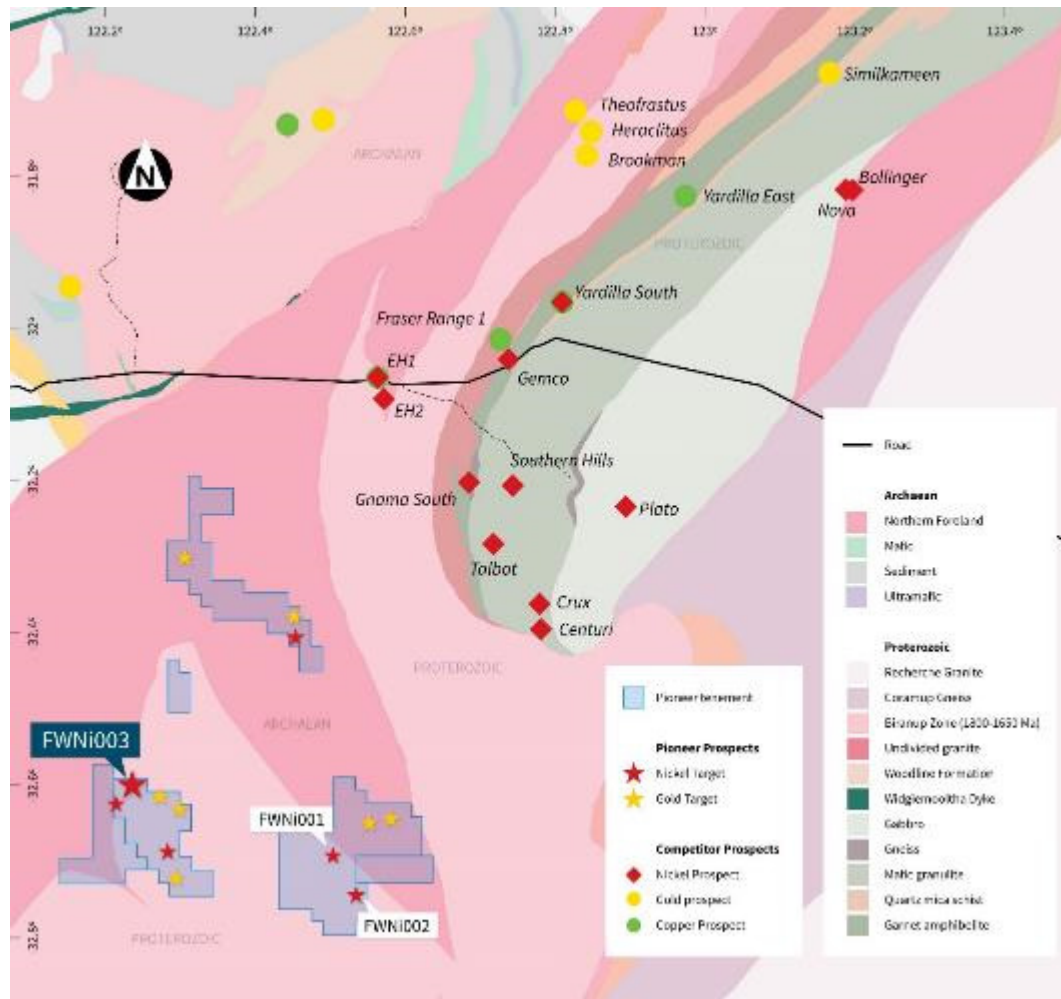
- Fairwater Nickel Project, plus
- New Mt Ridley tenements

Eastern Goldfields and Nickelfields

- Blair Nickel Mine Extensions
- Acra Gold Project
- Juglah Dome Base Metals



Geographic Focus : Albany Fraser Fairwater Project (PIO 75%)



What we know...

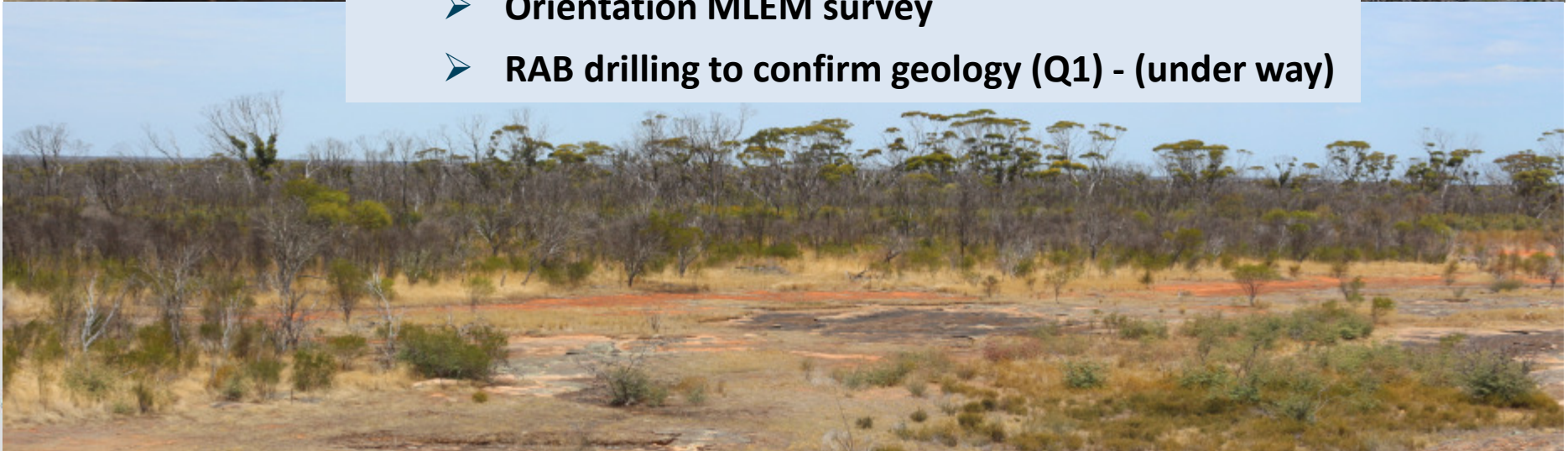
- ✓ Ground position - 742 km²
- ✓ 105 km SW of Nova- Bollinger nickel discoveries
- ✓ Both Archaean and Proterozoic Terrains
- ✓ 2013: First Geochem-EM drill target identified at FWNi001
- ✓ 2014: FWNi003 (and others) emerge with geochemistry indicating mafic-UM stratigraphy present
- ✓ 2015: Tenement Granted. Field work commences

Emerging Fraser Range Nickel

FWNi003

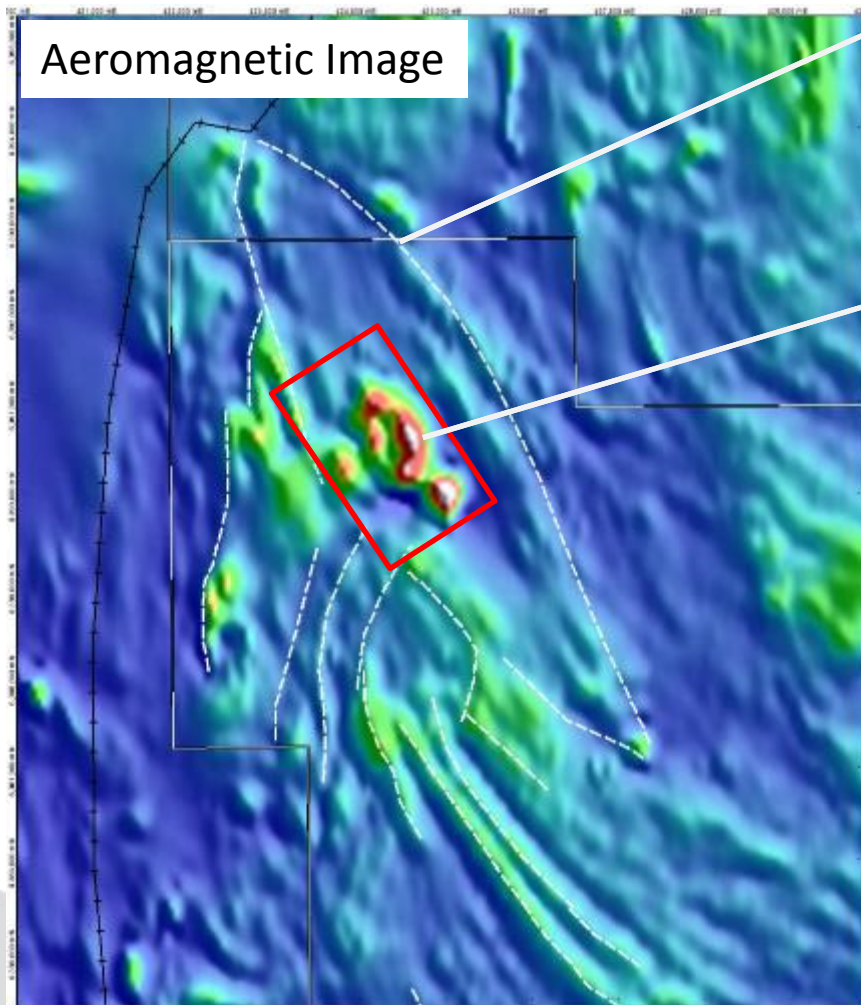


- ✓ **2015: 1st quarter work program**
 - **Soil geochemistry at FWNi001 and FWNi003**
 - **Orientation MLEM survey**
 - **RAB drilling to confirm geology (Q1) - (under way)**



Emerging Fraser Range Nickel

FWNi003

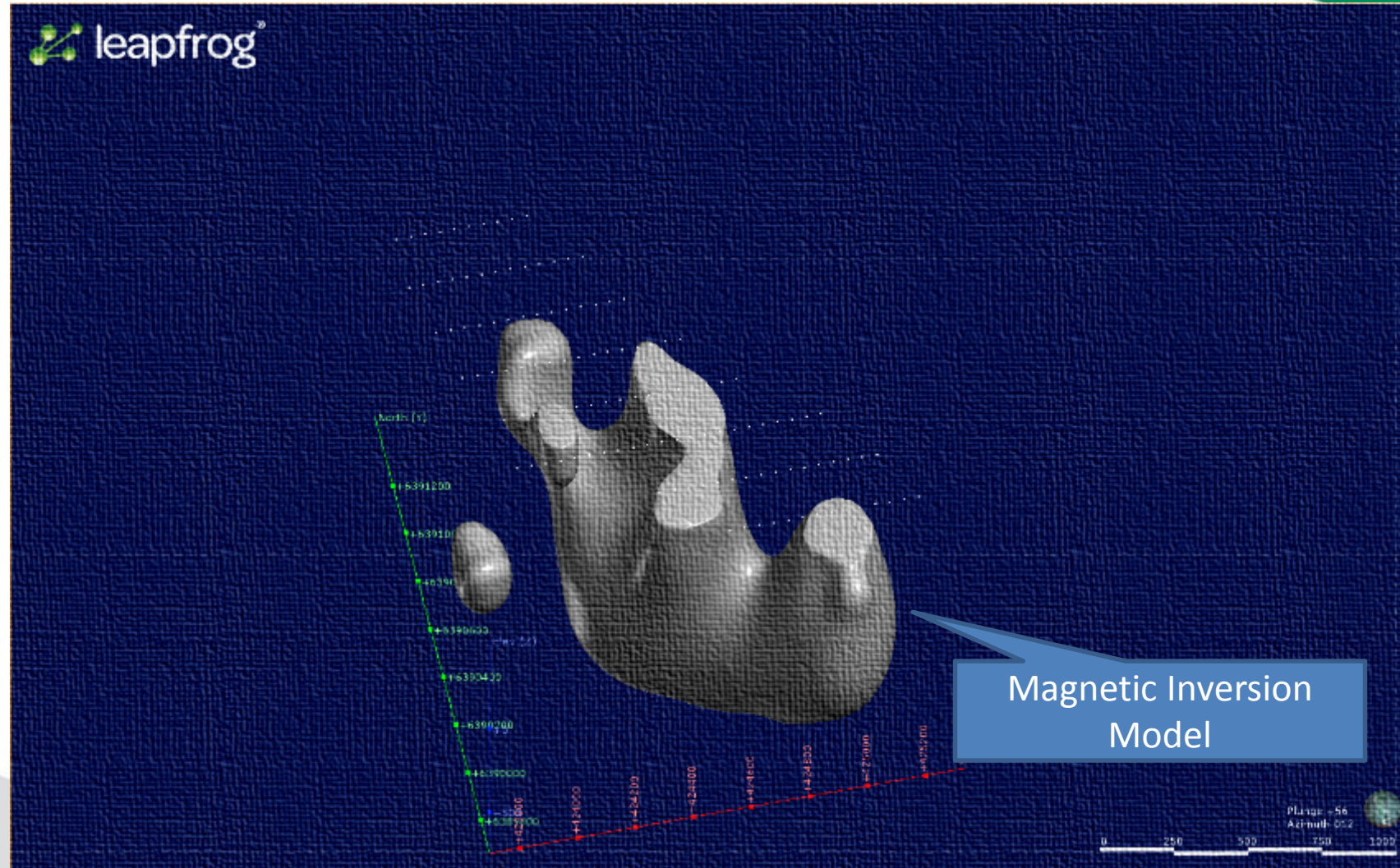


Aeromagnetic Imagery shows an 8 kilometre long, NW-trending oval structure

Internal 2 kilometre long core of clustered, chrome-anomalous, magnetic rocks represents FWNi003.

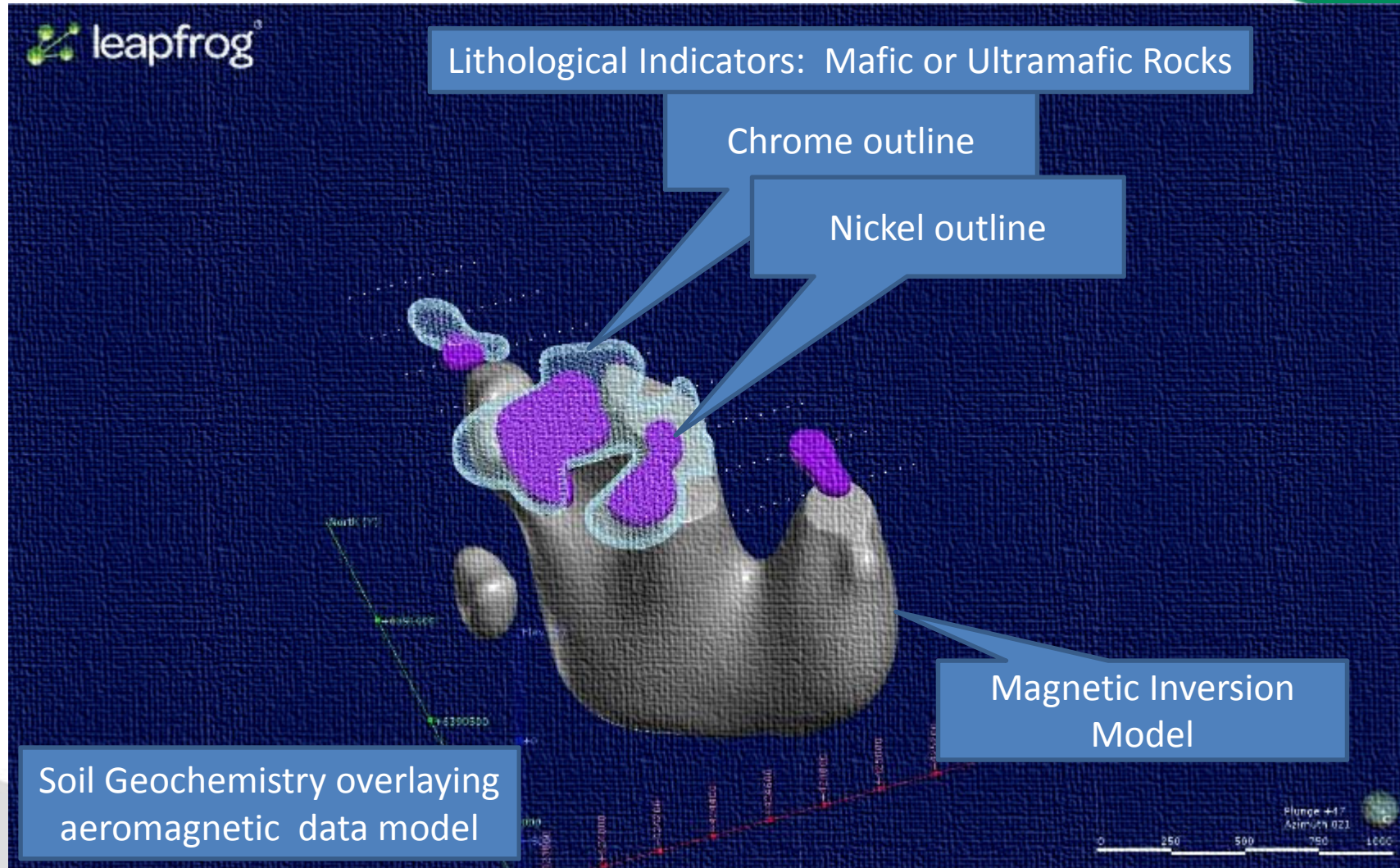
- Geometry: Proterozoic-aged oval geological structure
- Age Relationship: tramline stratigraphy disrupted
- Geophysics and Geochemistry: multiple internal magnetic bodies with coincident anomalous Ni and Cr, Cu and PGE
- Scale: FWNi003 structure strike length is 8 kilometres
- Regional Structure: within 4 km of a major thrust fault

FWNi003



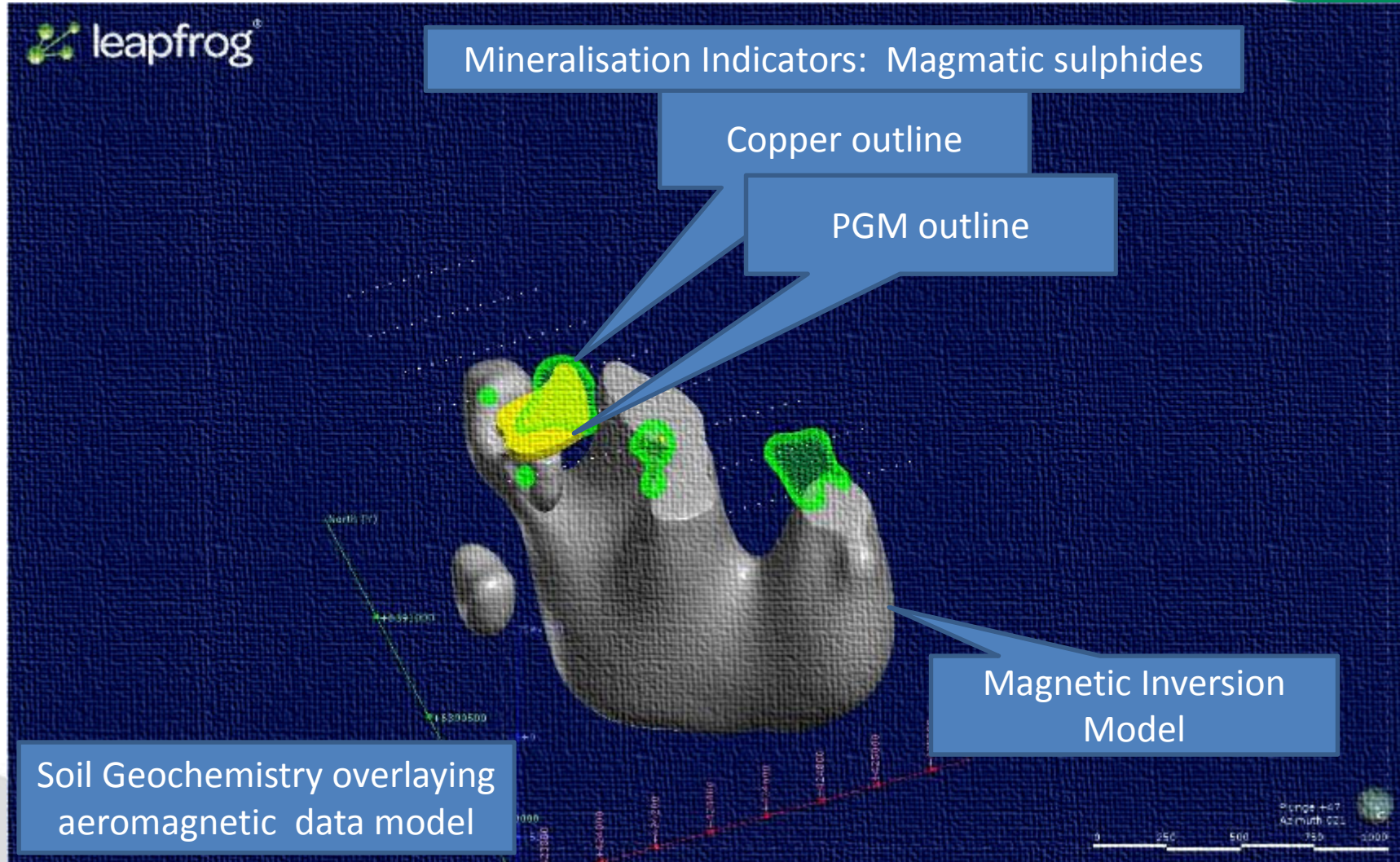
Emerging Fraser Range Nickel

FWNi003



Emerging Fraser Range Nickel

FWNi003

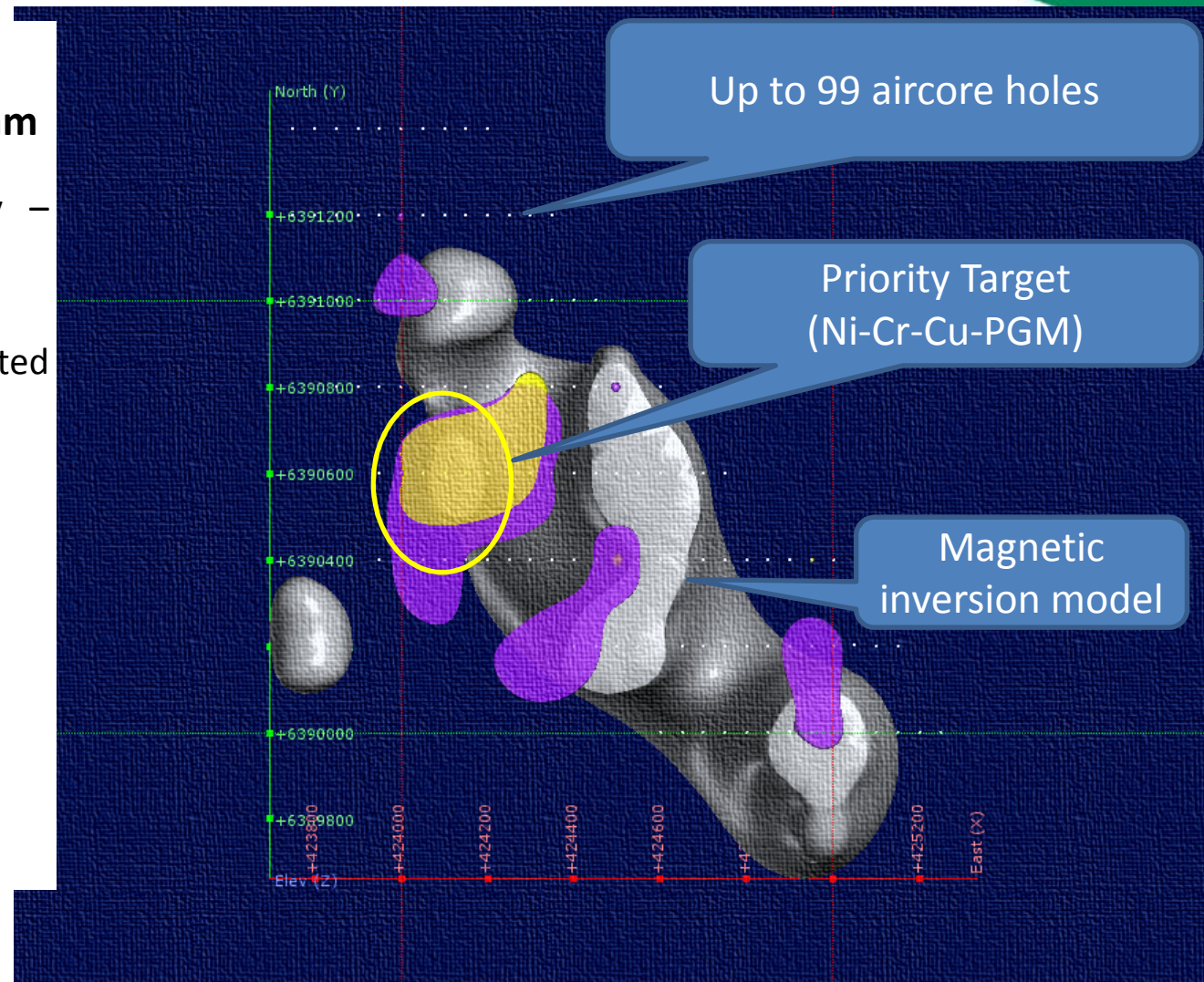


Emerging Fraser Range Nickel

FWNi003

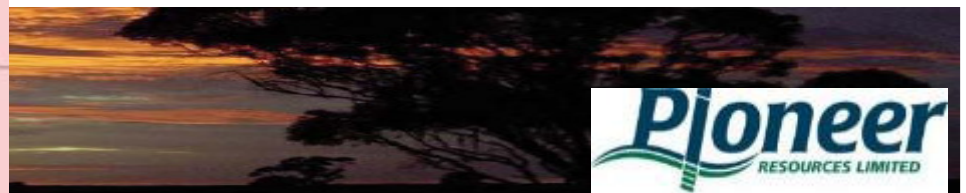
2015 1st quarter work program

- Detailed soil geochemistry – confirms priority target
- Aircore drilling to test updated geological model
IN PROGRESS

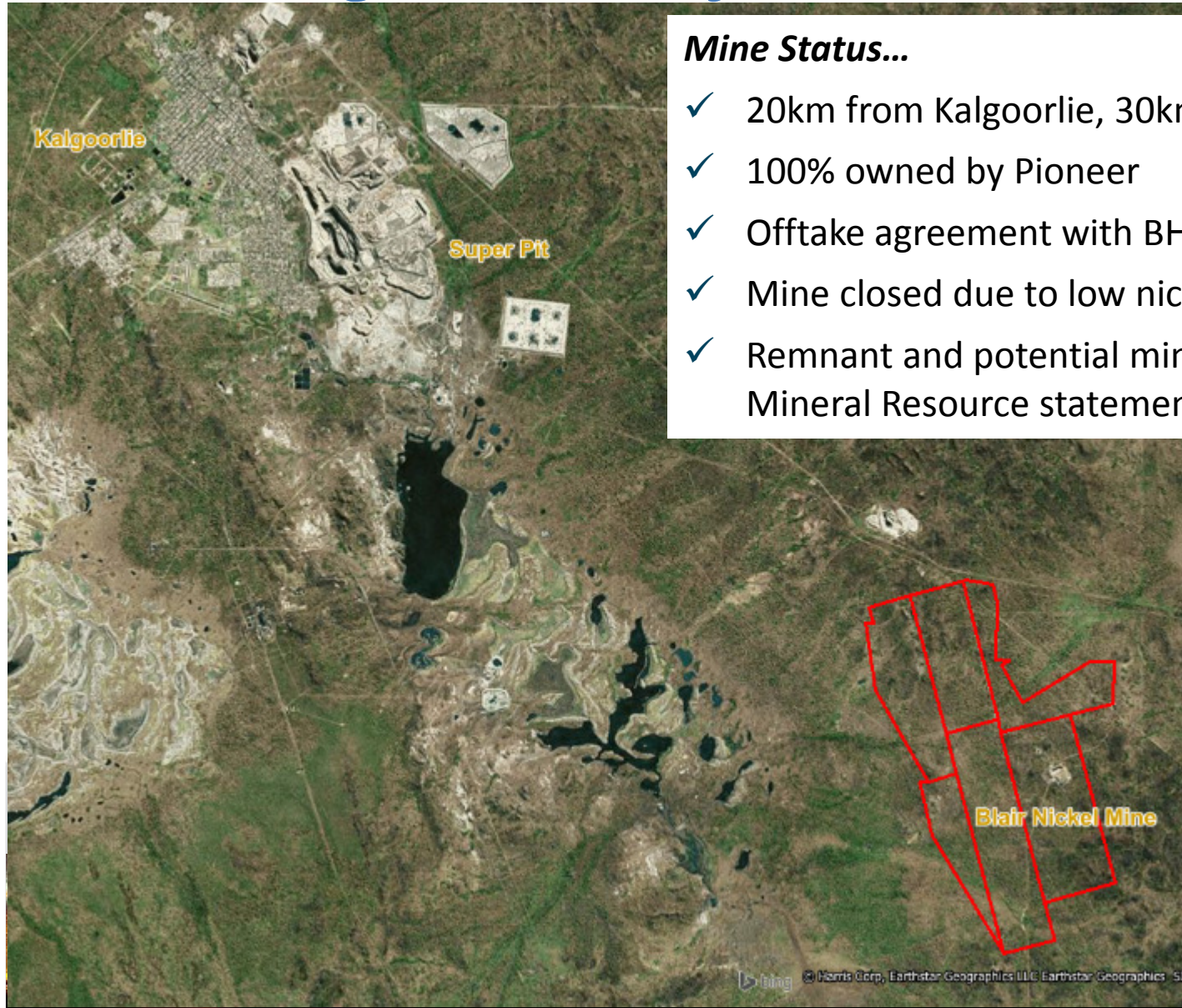


Geographic Focus Eastern Nickel Fields

Blair Nickel Mine Extension Project



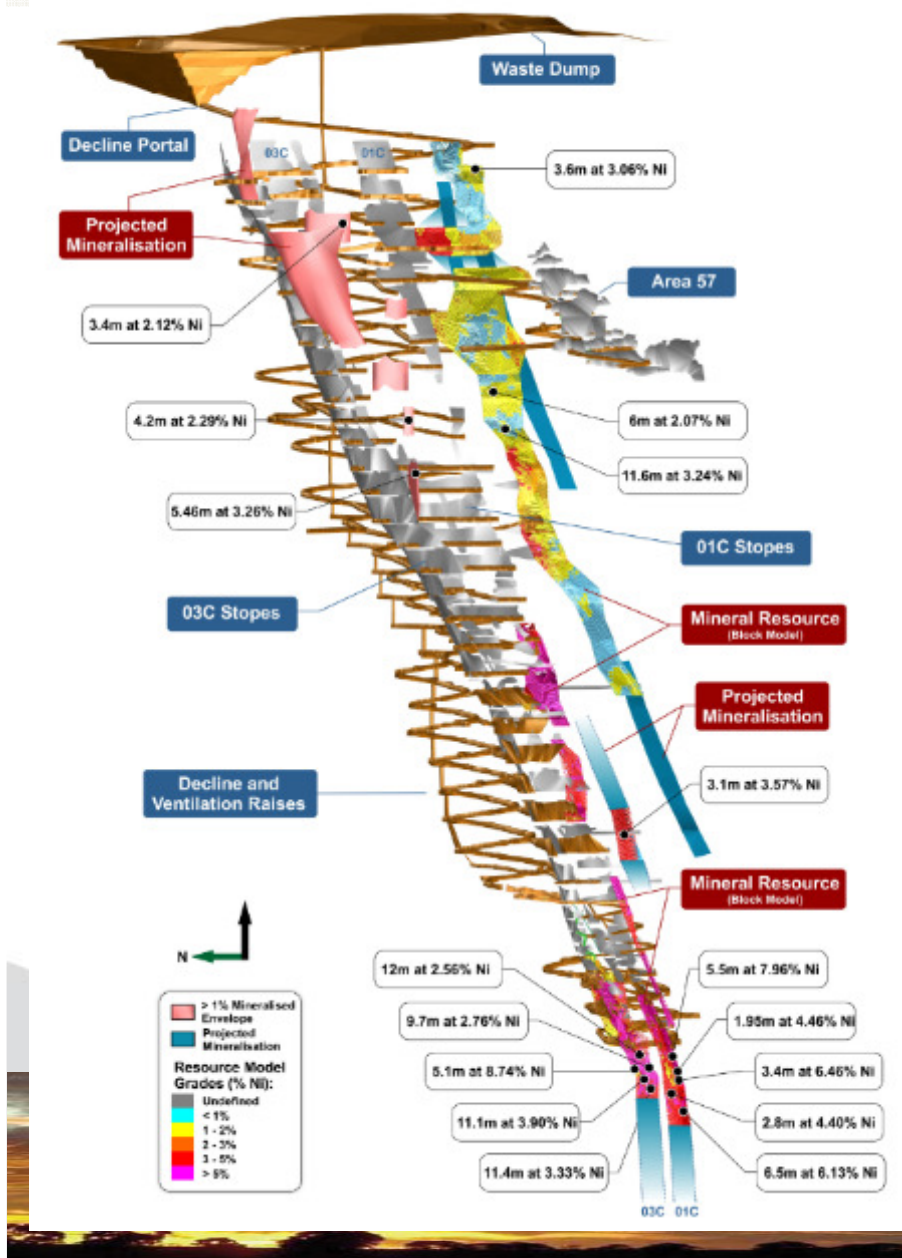
Geographic Focus: Kalgoorlie Golden Ridge Au-Ni Project



Mine Status...

- ✓ 20km from Kalgoorlie, 30km from Kambalda
- ✓ 100% owned by Pioneer
- ✓ Offtake agreement with BHP-B
- ✓ Mine closed due to low nickel prices in 2008
- ✓ Remnant and potential mineralisation modelling.
Mineral Resource statement: 222,710t at 2.92% Ni

Mineral Resource estimate completed



The Blair Mine...

✓ Mineral Resource estimate :

Class	Tonnes	Ni	Ni Metal
	(t)	(%)	(t)
Indicated	75,560	4.37	3,300
Inferred	147,150	2.18	3,210
Total	222,710	2.92	6,510

Note: Appropriate rounding applied

- ✓ High grade mineralisation (>4% Ni at the base of the mine development - 950m)
- ✓ Shallow drill intercepts on endowed surfaces near the mine are the focus of the expansion strategy

02 Surface Drill Intercepts

GOD018: 8.5m at 1.30% Ni

BLD049: 1.05m at 5.99% Ni

BU07_19: 4.2m at 2.62% Ni

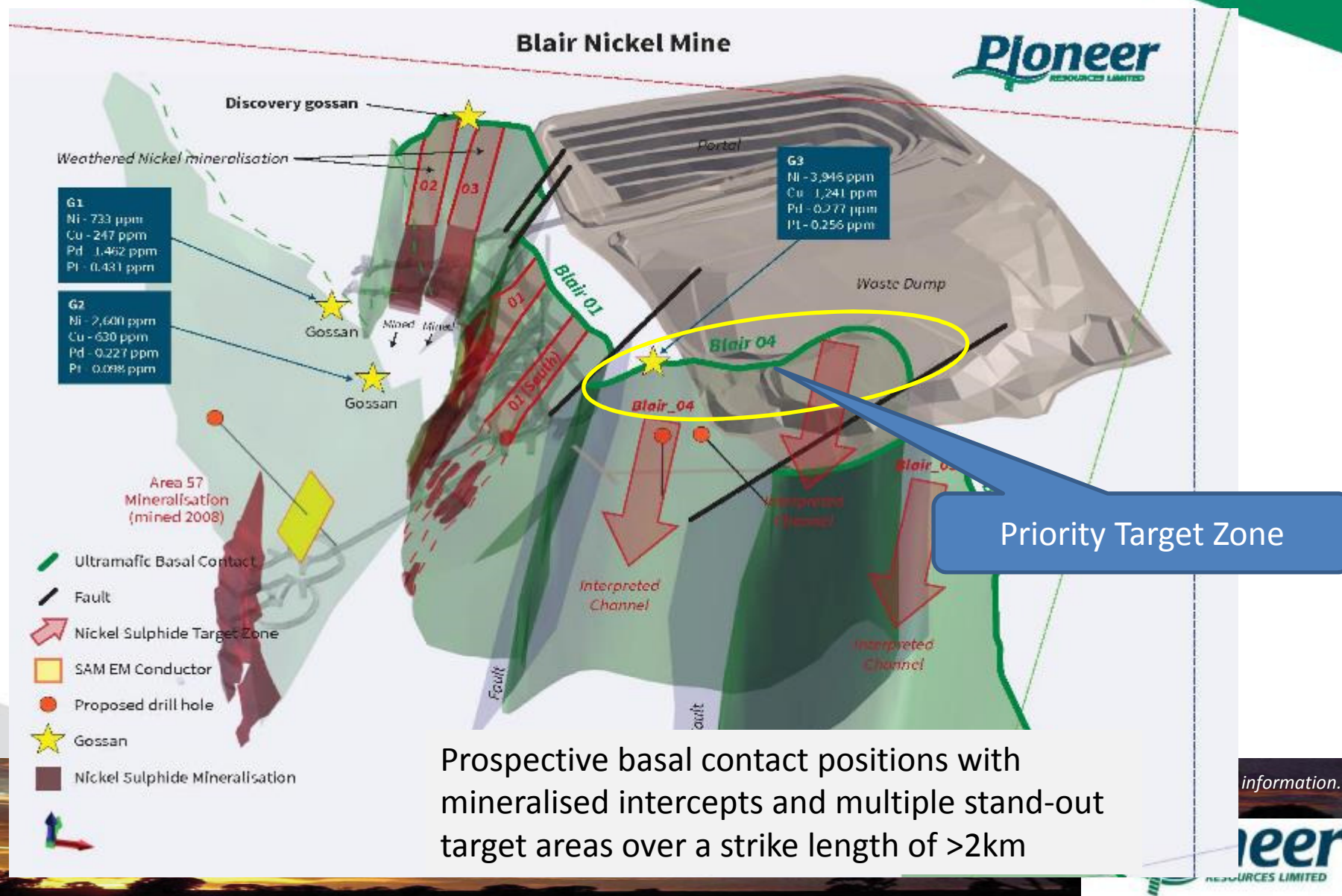
BU11_01: 5.46m at 3.73% Ni

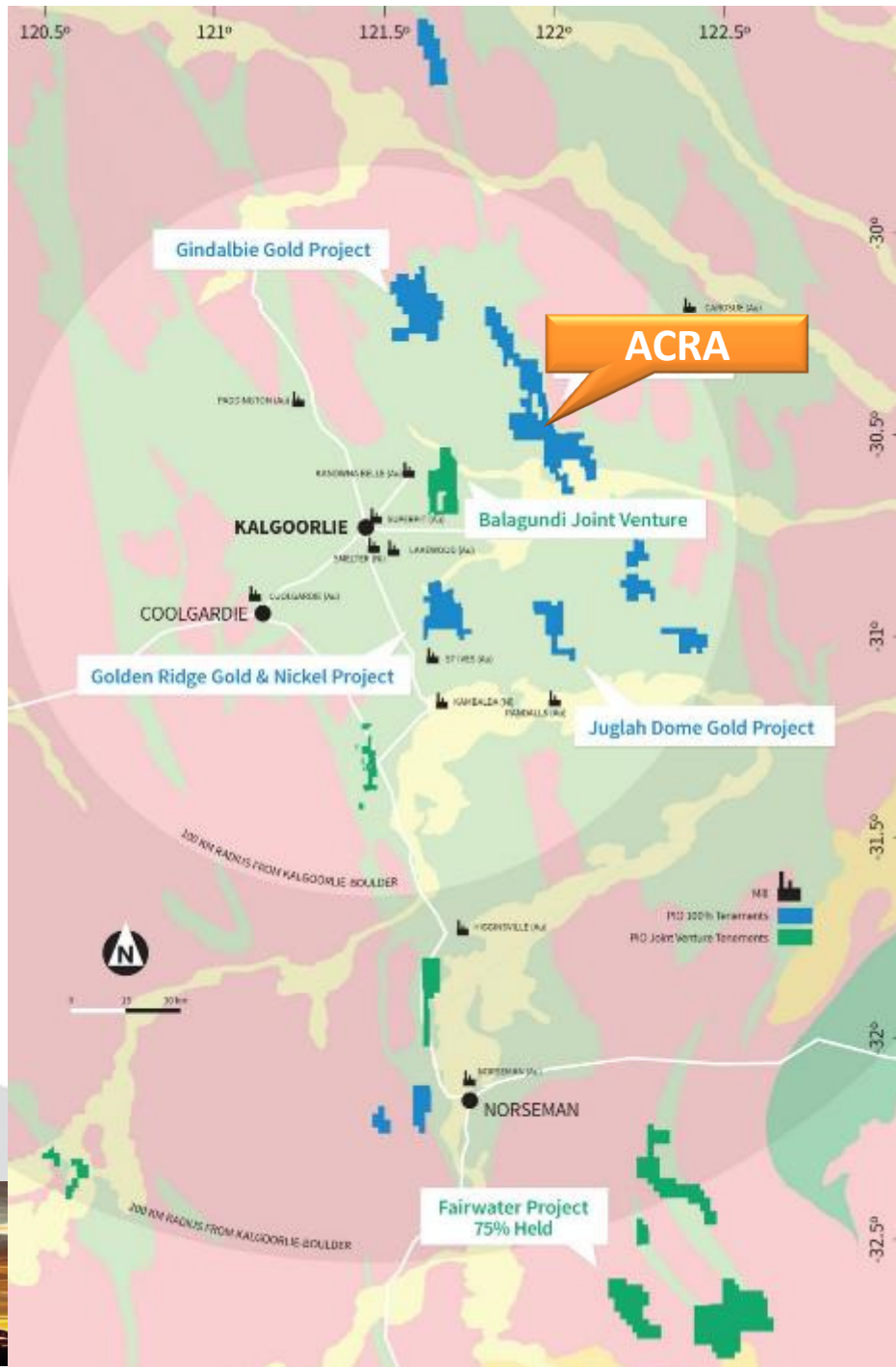
AMUG069: 0.98m at 6.87% Ni

Refer to Note 3 when considering these assay results.



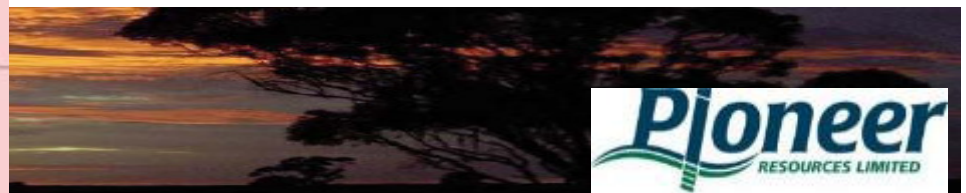
A feature of Kambalda-style nickel sulphide deposits is their persistence with depth





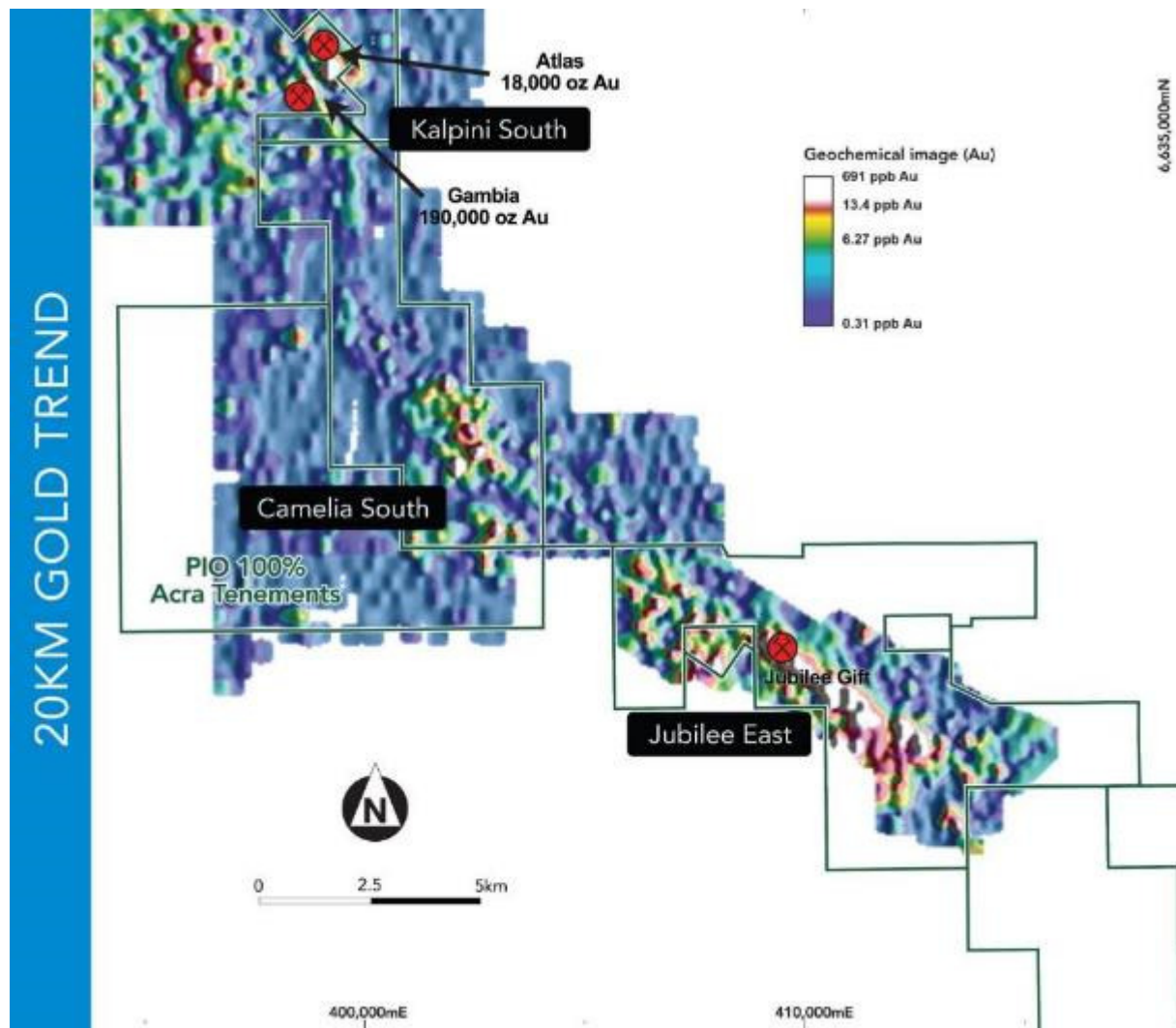
Geographic Focus Eastern Gold Fields

Acra Gold Project



Acra Gold Project

continues to excite

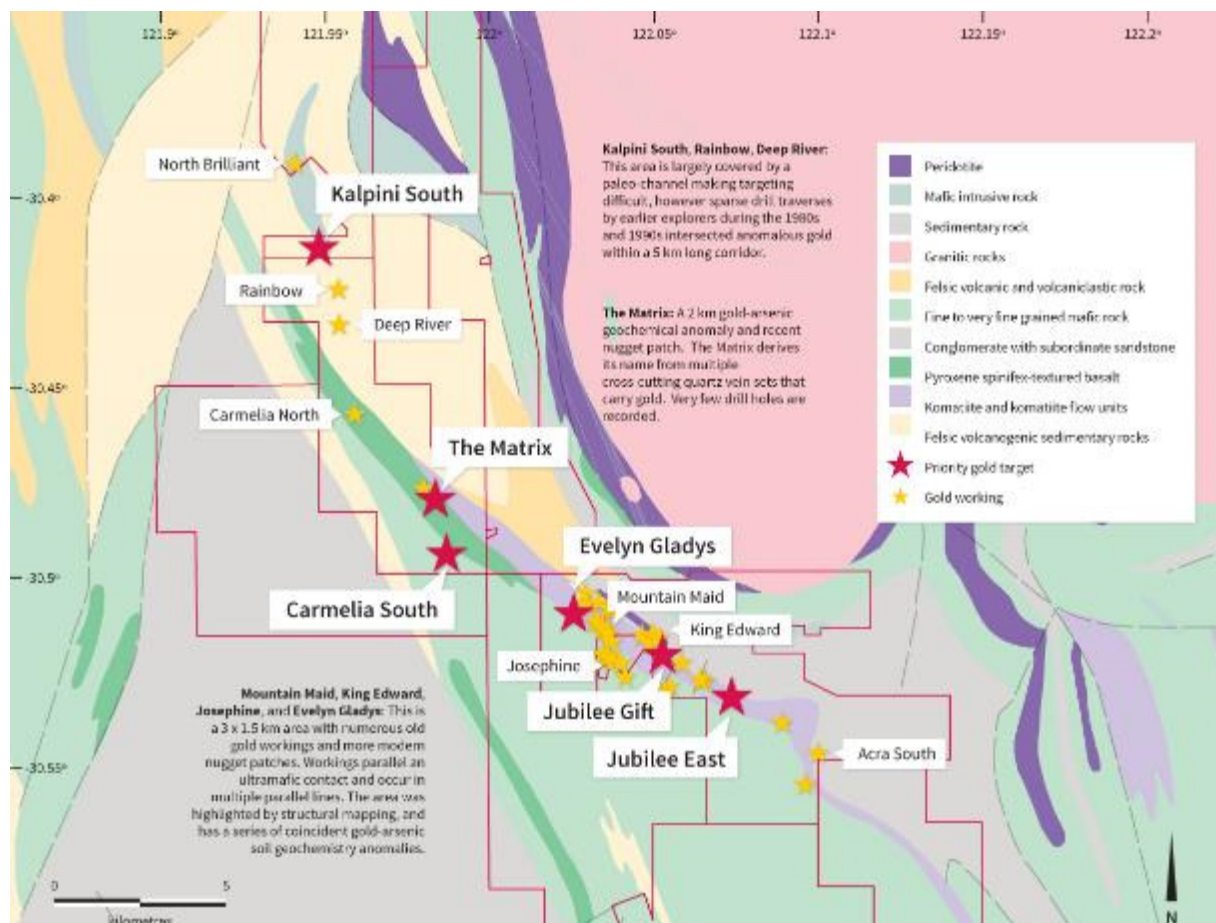


- Acra is Pioneer's priority gold project
- Previous "large budget" explorers have focussed on nickel during the past 20 years
- Gold data from earlier explorers has been brought into context when reviewed with modern datasets

Pioneer is the first modern explorer to hold the amalgamated project with a primary focus on gold

Acra Gold Project

continues to excite



Drilling Results confirm gold endowment.

Kalpini South:

KSRC004: 10m at 6.38g/t from 61m
 KSRC005: 9m at 5.31g/t from 36m
 KSRC007: 15m at 2.93 from 94m
 KSRC018: 12m at 2.62g/t from 98m

Jubilee East:

JERC002: 13m at 2.84g/t from 27m
 JERC003: 2m at 12.42g/t from 57m
 JERC007: 4m at 8.1g/t from 34m
 JERC010: 7m at 2.6g/t from 101m
 JERC038: 8m at 2.14g/t from 52m

Camelia South - Regolith:

CSRC002: 3m at 3.68g/t from 42m
 CSRC003: 3m at 4.34g/t from 45m
 CSRC012: 4m at 2.48g/t from 60m
 CSAC018: 6m at 4.39g/t from 57m
 CSAC028: 6m at 3.77g/t from 96m

✓ 2015: 1st quarter work program

- Interpretation of new aeromagnetic data by Dr David Isles
- Plan drilling for second quarter

• Refer note 4 for all results except KSRC018, refer note 2

Proposed Q1-Q2 2015 Work Program

	January	February	March	Q2
Fairwater (Ni)	Grant/Flora	Geochem/ Geophysics	Drilling	Drilling
	Complete	In progress	NOW	Based on results
Golden Ridge	Geochem/EM Survey		Drilling	Drilling
(inc Blair Mine)	Complete		In train	Based on results
Acra (Au)	Aeromagnetics			Drilling
	Process and Interpret			Based on results
Dingo Dam			Drilling	
			In train	

Investment Highlights

- FOCUSED

- Projects within the world class Eastern Gold (and Nickel) fields

- FUNDED

- \$3.0 million cash approx.

- ACTIVE

- Emerging Nickel targets at FAIRWATER PROJECT in Fraser Range: high reward potential in WA's hottest location – **Drilling now**
- Mine Extension testing for the BLAIR NICKEL MINE, near Kambalda/Kalgoorlie WA – **Drilling this month**
- Pipeline targets;
 - ACRA GOLD PROJECT in Eastern Goldfields
 - JUGLAH DOME GOLD and VMS PROJECT in Eastern Goldfields



Contact

- **For further information please contact:**

David Crook

Managing Director

Pioneer Resources Limited

T: +61 8 9322 6974

E: dcrook@pioresources.com.au

W: www.pioresources.com.au



Disclaimer and Competent Person's Statement

- This presentation is provided to you for the sole purpose of providing preliminary background technical, financial and other information to enable you to review the business activities of Pioneer Resources Limited ("Pioneer" or "the Company").
 - The material provided to you does not constitute an invitation, solicitation, recommendation or an offer to purchase or subscribe for securities.
 - This presentation may contain "forward looking statements" which are made in good faith and are believed to have reasonable basis. However, such forward looking statements are subject to risks, uncertainties and other factors which could cause the actual results to differ materially from the future results expressed, projected or implied by forward looking statements.
 - The information within this report as it relates to geology and mineralisation was compiled by Mr. David Crook who is a full time employee of Pioneer Resources Limited, a member of The Australasian Institute of Mining and Metallurgy (member 105893) and is a Competent Person as defined by the 2012 JORC Code, having five years experience which is relevant to the style of mineralisation and type of deposit described in the Report. This person consents to the inclusion of this information in the form and context in which it appears in this report.
-
- Note 1. (Acra) Refer to the Company's Quarterly Activities Report ending 31 December 2013, 31 January 2014.
 - Note 2. (Acra) Refer to the Company's announcements dated 16 April 2014, 22 October 2014.
 - Note 3. (Blair) This information is disclosed under the JORC Code 2012 in an in an announcement dated 20 May 2014.
 - Note 4. (Fairwater) Refer to a Company announcement to ASX dated 21 July 2014.
 - Note 5. (Juglah Dome) refer to earlier Pioneer announcements to ASX where these results were reported under the JORC 2004 guidelines, including 20 July 2012 and 5 October 2012.
 - Note 6. (Juglah Dome) Refer to a Company announcement to ASX dated 14 July 2014 and 24 October 2014.
 - The Company it is not aware of any new information or data that materially affects the information included in this Presentation