



IMX Resources: Corporate Presentation
8 April 2015



Overview

ASX Code / TSX Code	IXR
Issued Capital ¹	827.6m
Market Capitalisation (@ 1.1c)	\$9.1m
IMX Cash	\$1.4m ²
Enterprise Value	\$7.7m
Options / Warrants	13.1m listed options ³ 14.2m unlisted options ⁴
Performance Rights ⁵	16.8m
Share Appreciation Rights ^{5,6}	30.0m
52 Week High / Low	\$0.054 / \$0.008

Major Shareholders⁷

Timothy Murray	6.7%
Sichuan Taifeng Group	6.2%
Capital Drilling	3.1%

1. Recent capital raising of 157m shares at 0.01 not yet settled
2. As at 31 December 2014, excludes US\$6m to be received in 2 tranches on completion of joint venture transaction with Fig Tree (see Slide 4)
3. Expiry date 14 September 2015, exercisable at A\$0.60
4. Includes 0.34m options exercisable for 3.793 shares per option
5. Held by management and directors – vest subject to performance
6. SARs have a base price of A\$0.022
7. Excludes new shareholders from recently completed capital raising

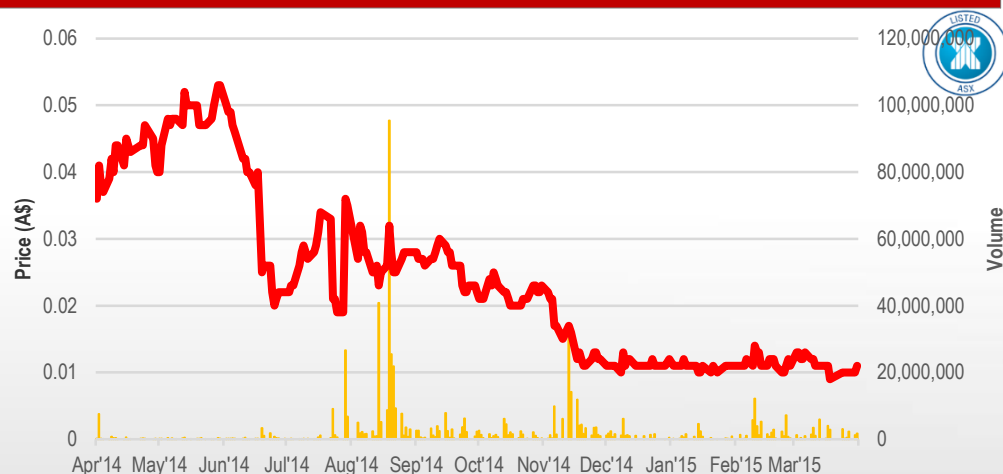
Board

Derek Fisher	<i>Non-executive Chairman</i>
Bruce McFadzean	<i>Non-executive Director</i>
Nick Corlis	<i>Executive Director – Exploration</i>

Senior Management

Phil Hoskins	<i>Chief Executive Officer</i>
Nick Corlis	<i>Executive Director – Exploration</i>
Stuart McKenzie	<i>General Manager – Commercial / Company Secretary</i>
Heavenlight Kavishe	<i>Country Manager Tanzania</i>

IMX Resources Limited FPO as of 31/3/2015





The Nachingwea Property is a 5,800km² land holding in south-east Tanzania with 4 opportunities:

1. Chilalo Graphite Project

- High-grade, coarse flake graphite project
- Excellent preliminary metallurgical results – optimisation underway with improvements expected
- PFS underway on smaller scale project (25-50ktpa)

2. Ntaka Hill Nickel Project

- Significant nickel resource at scoping study stage
- Recent JV with Fig Tree to provide up to US\$6M cash plus ~30% free carried interest to Feasibility Study

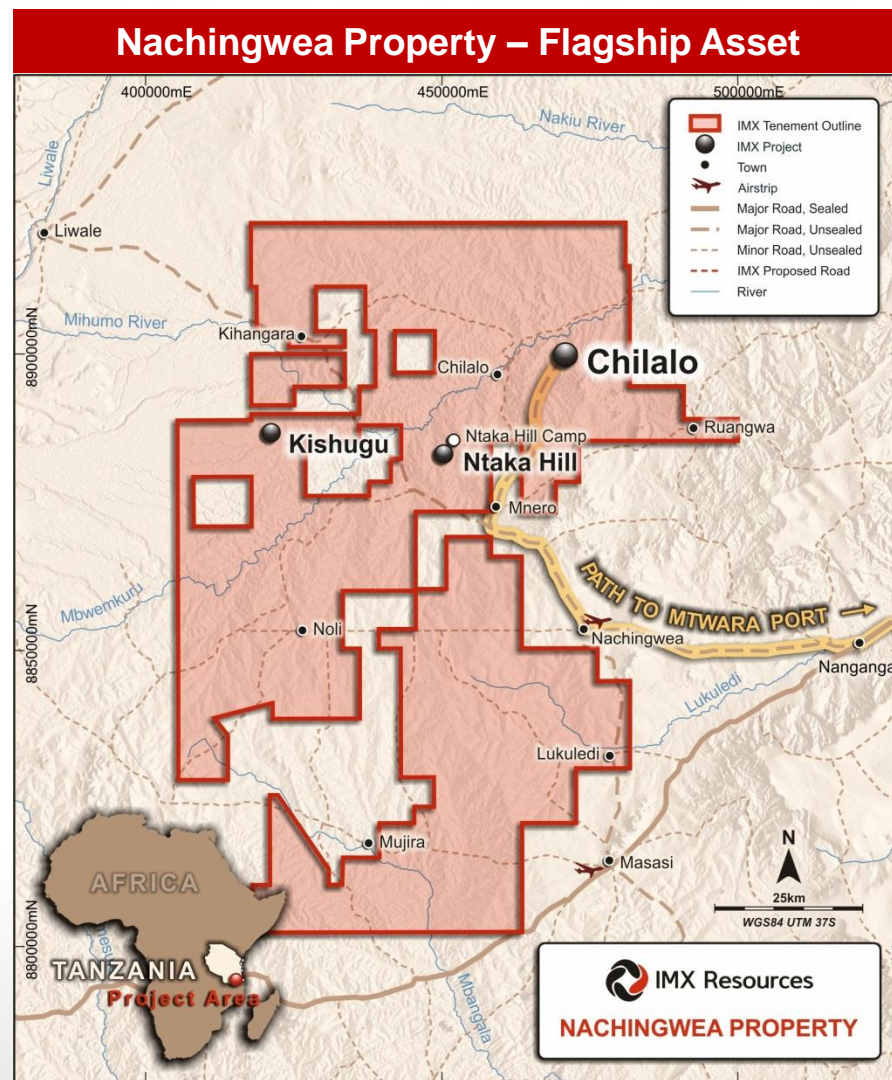
3. Kishugu Gold Prospect

- Excellent gold-in-soil anomaly – drilling May 2015

4. Regional exploration

- Substantial geophysical and geochemical datasets expected to produce a pipeline of new targets at low cost

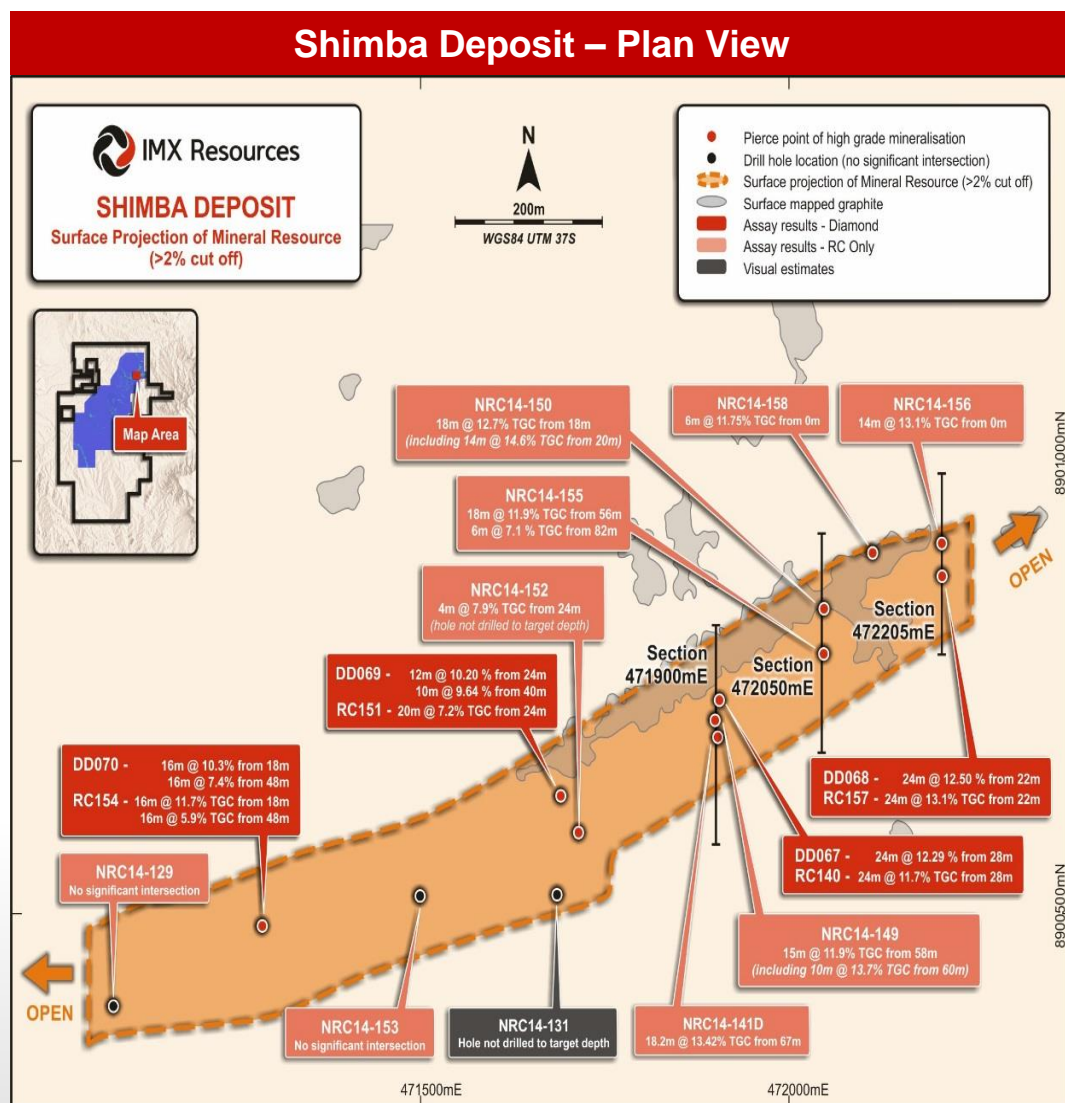
Fully funded through proceeds from recent capital raising and completion of JV with Fig Tree





2014 exploration program – high-grade Shimba deposit discovered

- Targeting based on rock chip samples and analysis of VTEM data
- RC and diamond drilling program completed in Q4 2014
 - 50 RC holes for 3,810m
 - 8 diamond holes for 570m
- High-grade discovery – Shimba deposit
 - 19 RC holes for 738m
 - 5 diamond holes for 207m
- Shimba extends over >1km strike and remains open to the north-east and down dip



Shimba – a high-grade resource

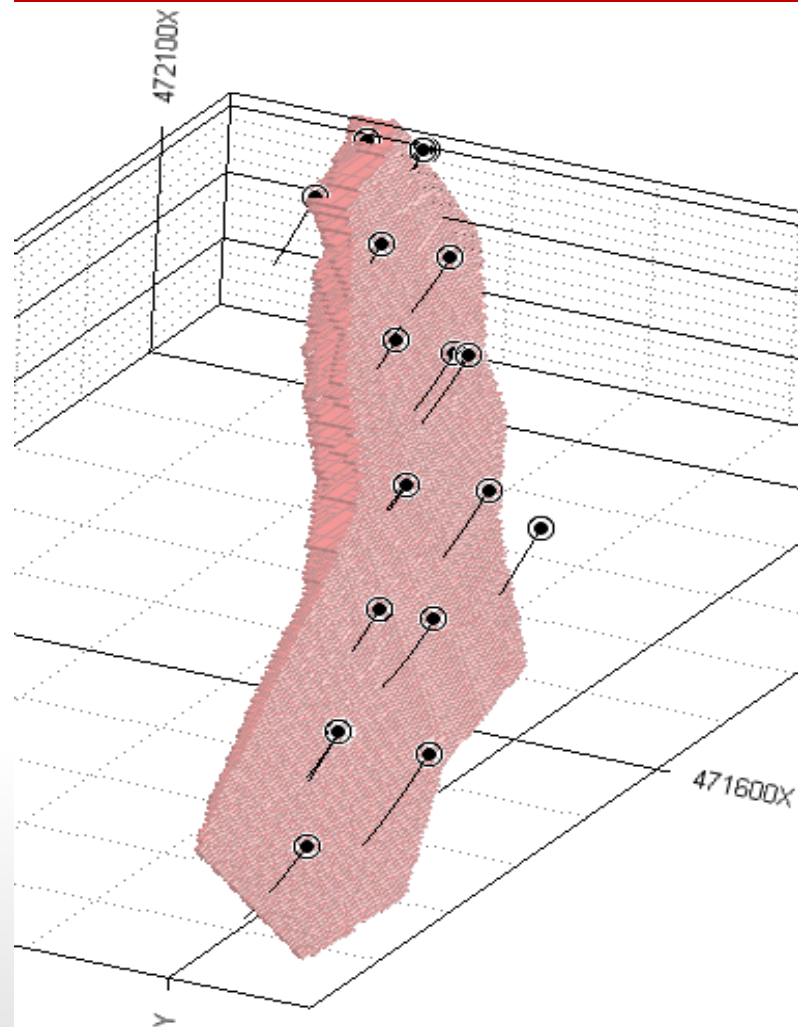
- 🌀 Maiden JORC Inferred Mineral Resource (ASX announcement 7 April 2015)
 - 🌀 High-grade Inferred Mineral Resource of 7.4 Mt @10.7%TGC
 - 🌀 >90% of the resource within 100m of surface
- 🌀 Over 500m of outcropping along strike
- 🌀 No further exploration drilling required
- 🌀 Straight forward, low-cost drill out to convert to Measured and Indicated Resource

Shimba deposit Mineral Resource – April 2015¹

Domain	Tonnes (Mt)	TGC %	Contained Graphite (Kt)
High-grade zone	7.4	10.7	792.2
Low-grade zone	10.7	3.0	322.4
Total	18.1	6.2	1,114.6

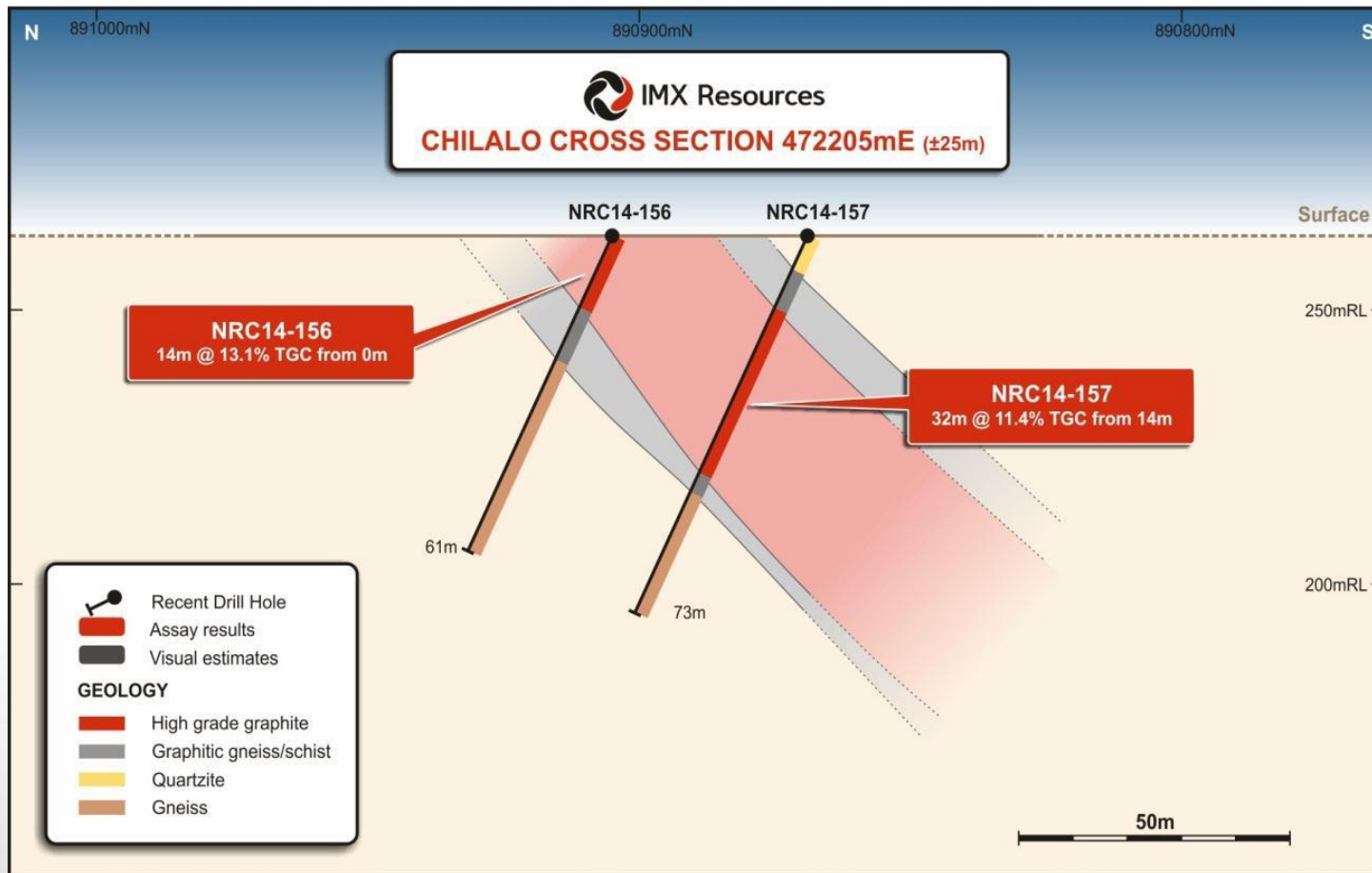
1. The Mineral Resource was estimated within constraining wireframe solids using a core high-grade domain defined above a nominal 5% TGC cut-off within a surrounding low-grade zone defined above a nominal 2% TGC cut-off. The resource is quoted from all classified blocks within these wireframe solids. Differences may occur due to rounding.

Shimba in 3D looking north-east

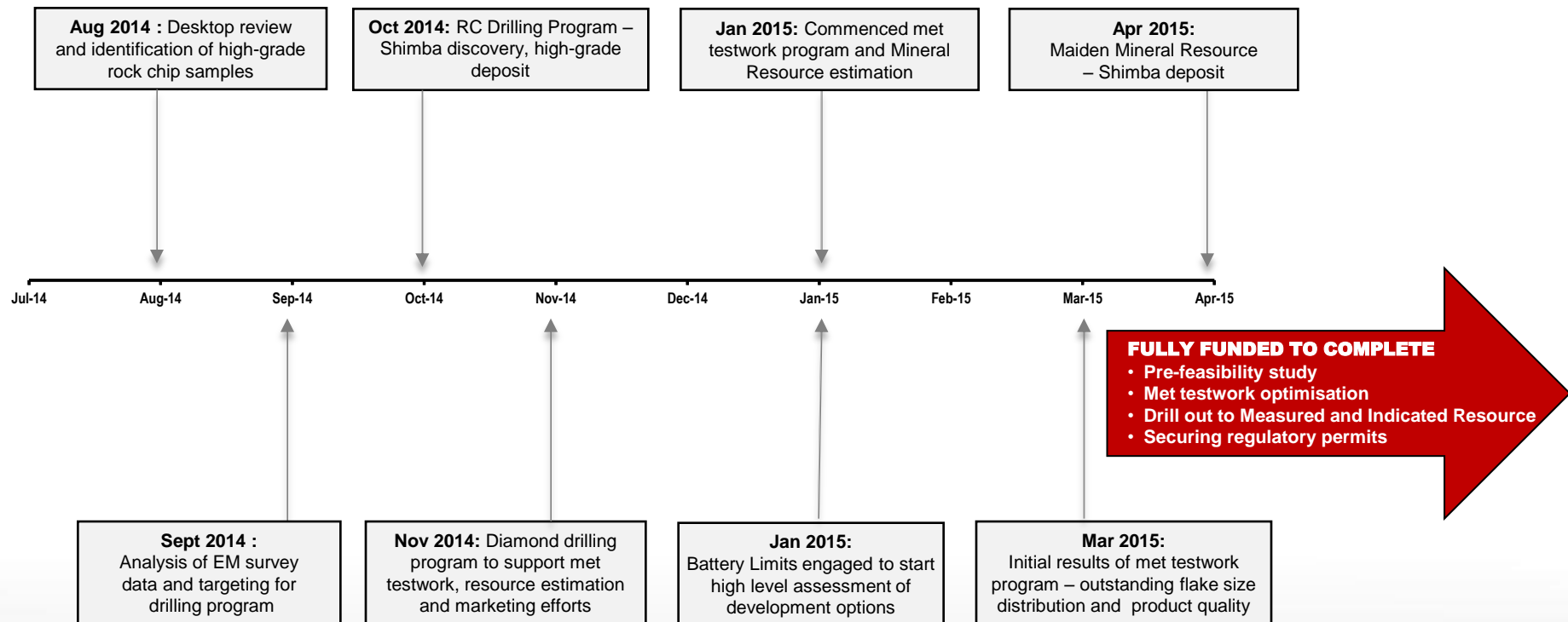


Cross Section – RC Drilling

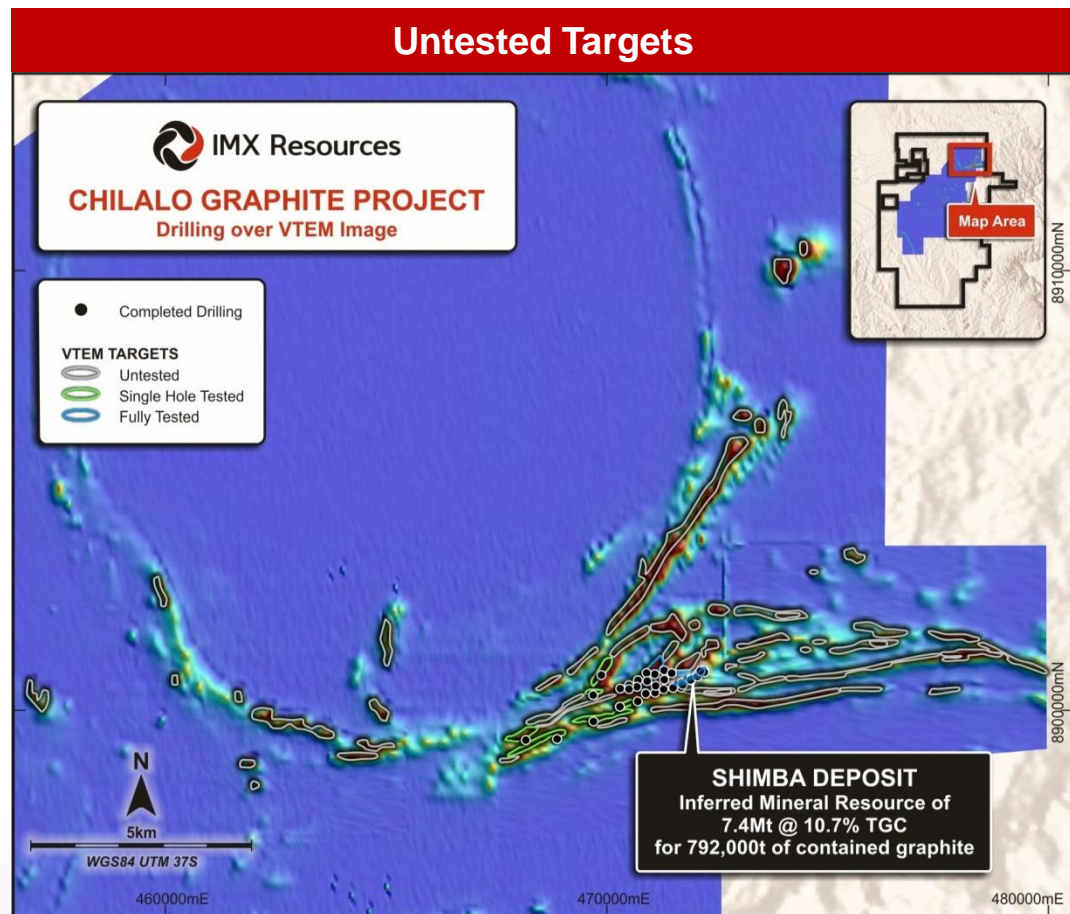
- Consistent thickness and grades
- Outcropping and laterally extensive resulting in lower mining costs



Rapid progress to mineral resource



- Shimba still open to the north-east and down dip
- Resource extension supported by downhole EM off-hole conductors
- Only tested 6km out of 54km of strike at Chilalo to date
- Significant number of untested VTEM targets with probability of more high-grade resources
- Orientation work at Shimba ongoing to increase probability of finding the high-grade targets, if required
- Shimba resources sufficient to support smaller scale project



Excellent **initial** metallurgical results (ASX announcement 30 March 2015)

- Up to 97.6% TC from basic flotation (extremely high purity)
- Up to 57% in large and jumbo flake categories (>180 microns)
- Up to 97.5% recoveries
- No deleterious elements
- Likely to attract premium prices

Next Steps

- Process optimisation to increase proportion of coarse flake in the product
- Marketing bulk samples

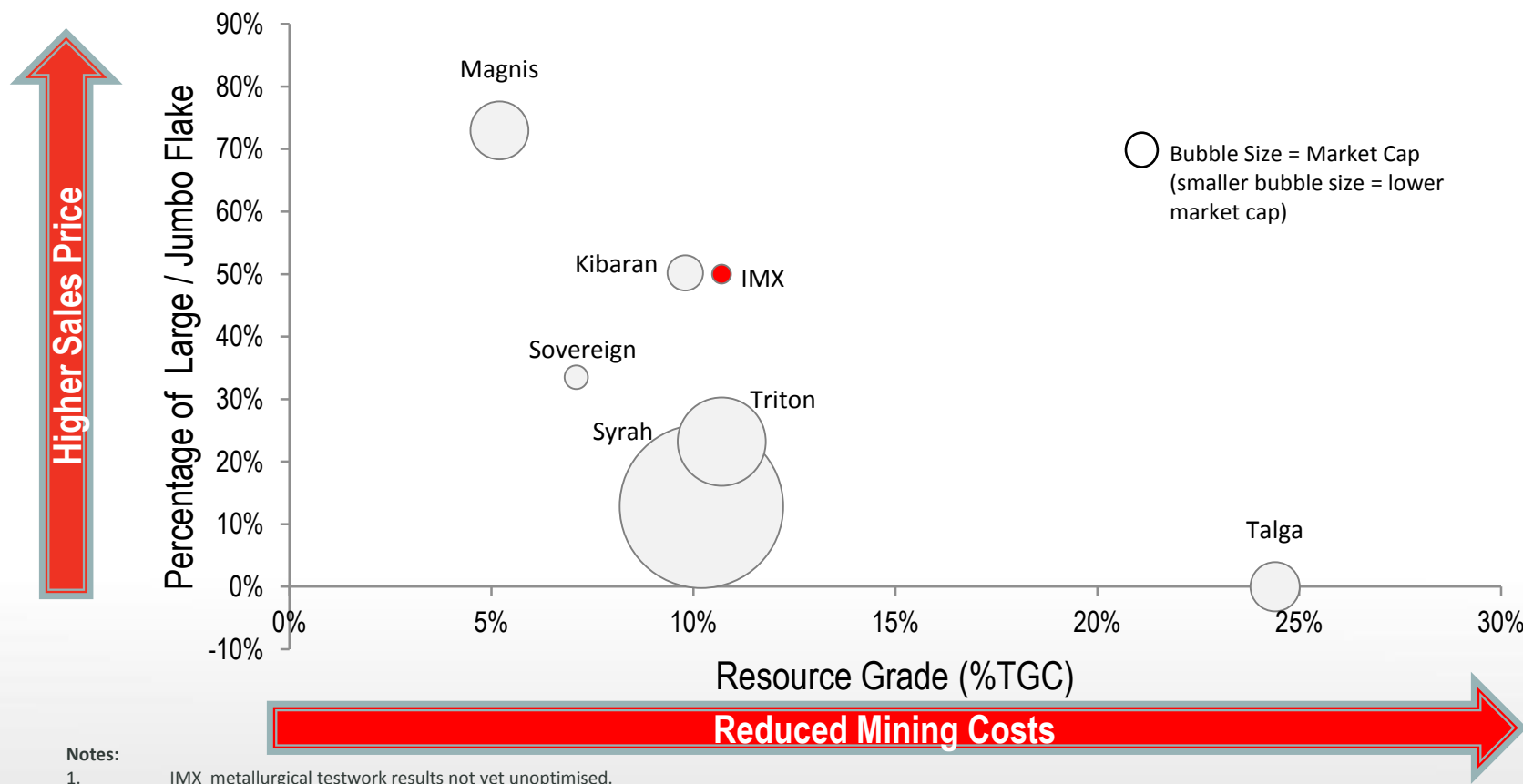
Flotation of transitional composite sample GK19





Peer comparison – flake size and resource grade

IMX's resource characteristics compare favourably with highly rated peers including Triton, Magnis and Syrah. IMX has an attractive combination of a high percentage of large and jumbo flake sized material and a relatively high grade for its Mineral Resource, but a low valuation when compared to a number of its peers.



Notes:

1. IMX metallurgical testwork results not yet unoptimised.
2. Due to inconsistent reporting of flake size distribution categories between companies, assumptions have been made to ensure comparability.
3. Sources: Syrah – 15/01/2014 announcement, Magnis – 29/12/2014 announcement, Triton – 2014 annual report, Kibaran – Dec 2014 corporate presentation, Sovereign – 21/10/2014 announcement, Talga – 17/10/2014 corporate presentation.
4. Talga looking to produce graphene in addition to graphite concentrate.

Camp

- Well established Ntaka Hill camp (~20km from Chilalo)
- Fully owned offices, messing accommodation, core storage telecommunications and sample prep laboratory

Water

- Water supply available at site

Power

- Power supply using 2-3 MW diesel generators (assumes 50ktpa)
- Potential for significant savings with multiple grid power projects contemplated in south-east Tanzania

Accommodation



Office and Communications



Core Storage Sheds



Core Logging Sheds



Roads and transport

- ❏ Chilalo to Mtwara Port is ~ 220 km
 - ❏ Main road to port – 160 km sealed
 - ❏ 60km, hard dirt road from Chilalo to main road to port
 - ❏ Minor road upgrades required around project site
- ❏ Existing airport at Nachingwea – ~47km from Chilalo

Mtwara Port

- ❏ ~220km from Chilalo site
- ❏ Commercial deep water port – 400 ktpa capacity from 11 deep water berths
- ❏ Land available for concentrate storage
- ❏ Capacity to service Chilalo volumes

Unsealed Road Network



Mtwara Port





Chilalo Graphite Project

Characteristics of a world-class graphite project

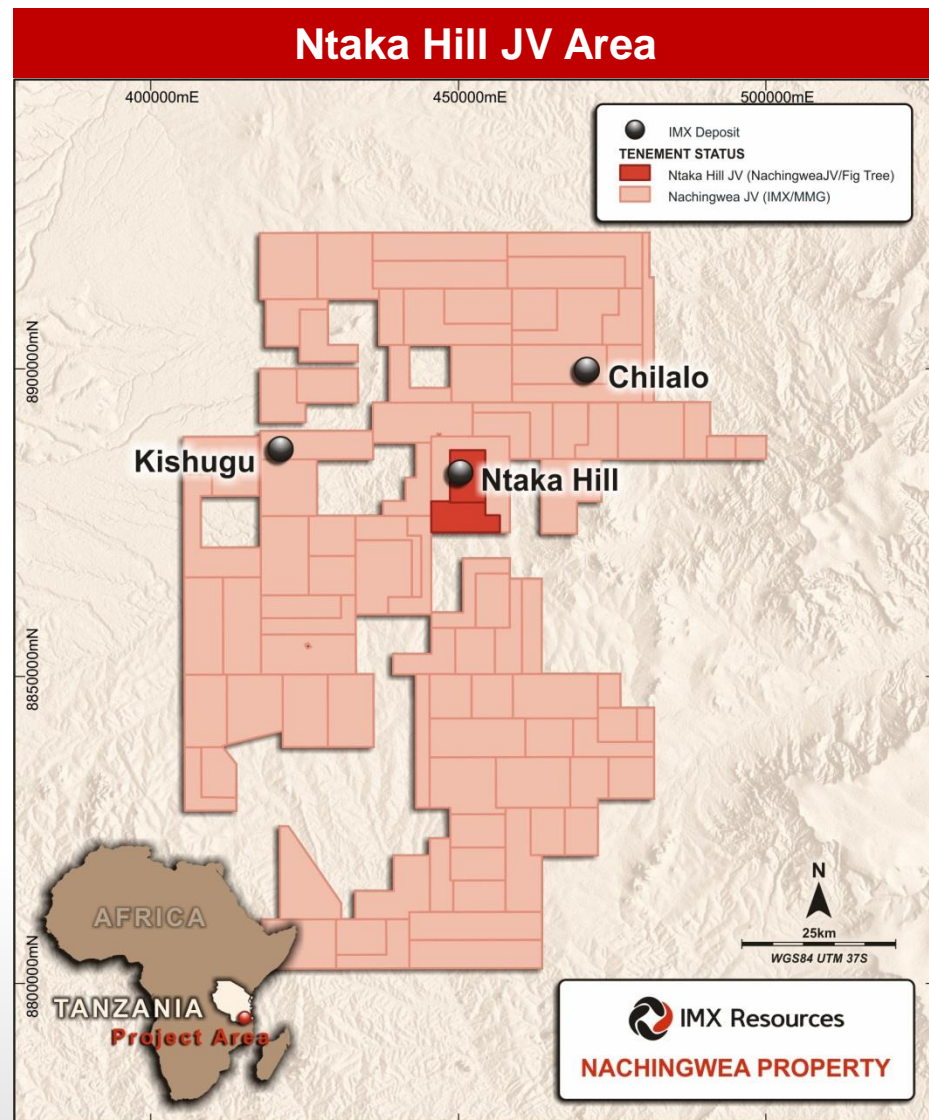
Key Graphite Deposit Characteristics	Chilalo
1. Deposit size and grade	<ul style="list-style-type: none"> High-grade Shimba resource (7.4Mt @ 10.7% TGC) Numerous untested targets = exploration upside
2. Location (country and infrastructure)	<ul style="list-style-type: none"> Quality infrastructure – existing port with capacity, established road network, existing camp, water access and low power requirements Low risk jurisdiction – established mining jurisdiction, stable democracy IMX has a demonstrated capacity to do business in Tanzania – experienced country manager
3. Flake size distribution	<ul style="list-style-type: none"> 57% in large and jumbo flake categories (>180 microns) – subject to further optimisation expected to increase this significantly Adjacent to large interpreted intrusive believed to be upgrading coarseness
4. Product purity	<ul style="list-style-type: none"> 97.6% TC from basic flotation (high purity)
5. Offtake	<ul style="list-style-type: none"> Strong expressions of interest in Chilalo product – to be formalised in the coming months
6. Operating costs	<ul style="list-style-type: none"> High-grade, near surface and laterally extensive – conducive to lower mining costs Proximity to key infrastructure likely to ensure Chilalo has competitive transport costs
7. Timeframe to production	<ul style="list-style-type: none"> Commencement of Pre-feasibility Study in Q2 2015 Chilalo expected to benefit from extensive work already undertaken at Ntaka Hill Nickel Project Timeframe to production to benefit from smaller scale production profile



Fig Tree Transaction – Ntaka Hill JV

Provides IMX with funding certainty and free carry to Feasibility Study

- JV agreement between IMX's Nachingwea Property JV and Mauritius-based mining PE fund (Fig Tree Resources Fund):
 - *Fig Tree acquire 70.65% of Ntaka Hill for cash payment of US\$6M, payable to the Nachingwea Property JV, and sole funding a Feasibility Study*
 - *Payment split into US\$2M upon completion in April 2015 and US\$4M upon successful completion of geotechnical studies expected September 2015*
- Intends to complete a feasibility for a low capex, higher grade operation from existing resources
- Fig Tree have in-depth experience in African nickel sulphide deposits with similarities to Ntaka Hill
- Transaction was the result of significant interest in nickel process – Fig Tree deal chosen because:
 - *Fig Tree don't require further exploration*
 - *Transaction structure (cash plus meaningful interest)*
 - *JV partner's objectives aligned with IMX*





Ntaka Hill Nickel

Significant existing nickel resource

(ASX announcement 19 August 2013):

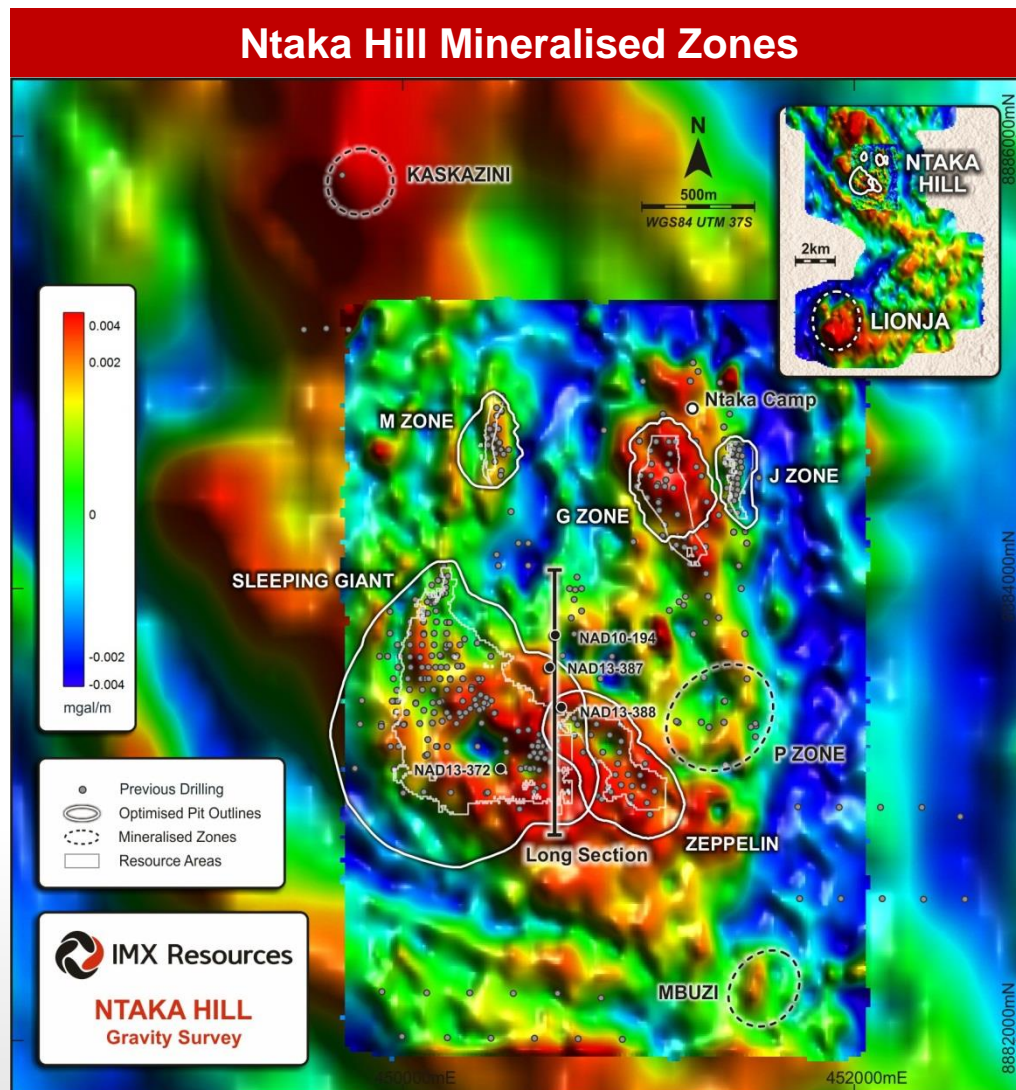
- Measured and Indicated Resource of 20.3Mt @ 0.58% Ni and 0.13% Cu for 117,880t contained nickel

- Inferred Resource of 35.9Mt @ 0.66% Ni and 0.14% Cu for 238,500t contained nickel

- Excellent metallurgy capable of producing a premium concentrate with low impurities

- Access to existing infrastructure

- US\$60M+ spent to date on project



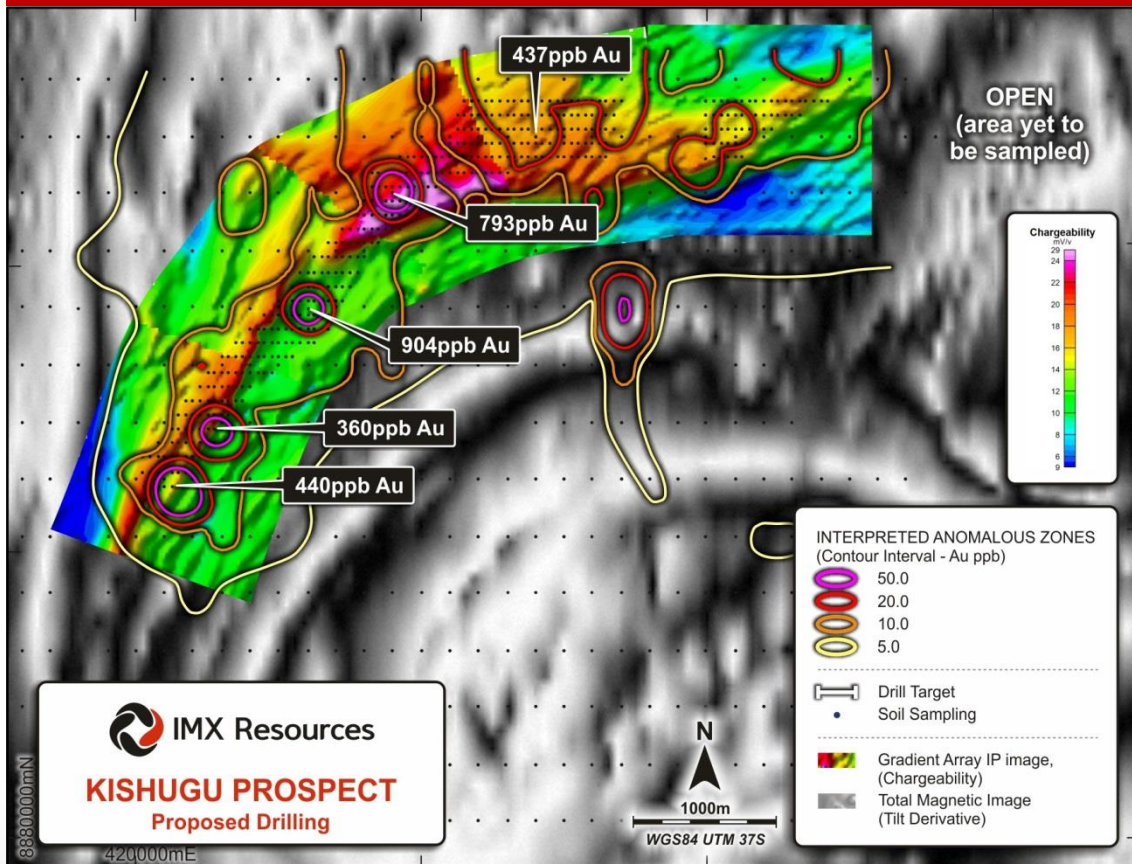


Kishugu Gold Prospect

An exciting gold target

- ❁ Potential to host significant gold deposit
- ❁ Extensive, coherent, gold-in-soil anomaly measuring 6km by 600m @ +10ppb with significantly higher values within main trend (904ppb) (ASX announcements 14 October 2014 and 26 November 2014)
- ❁ Strong coincident Induced Polarisation (IP) anomalies
- ❁ Associated pathfinder elements such as As, Bi and Ag
- ❁ Open along strike
- ❁ Located adjacent to major structure

Kishugu 2014 Soil Sampling and IP¹

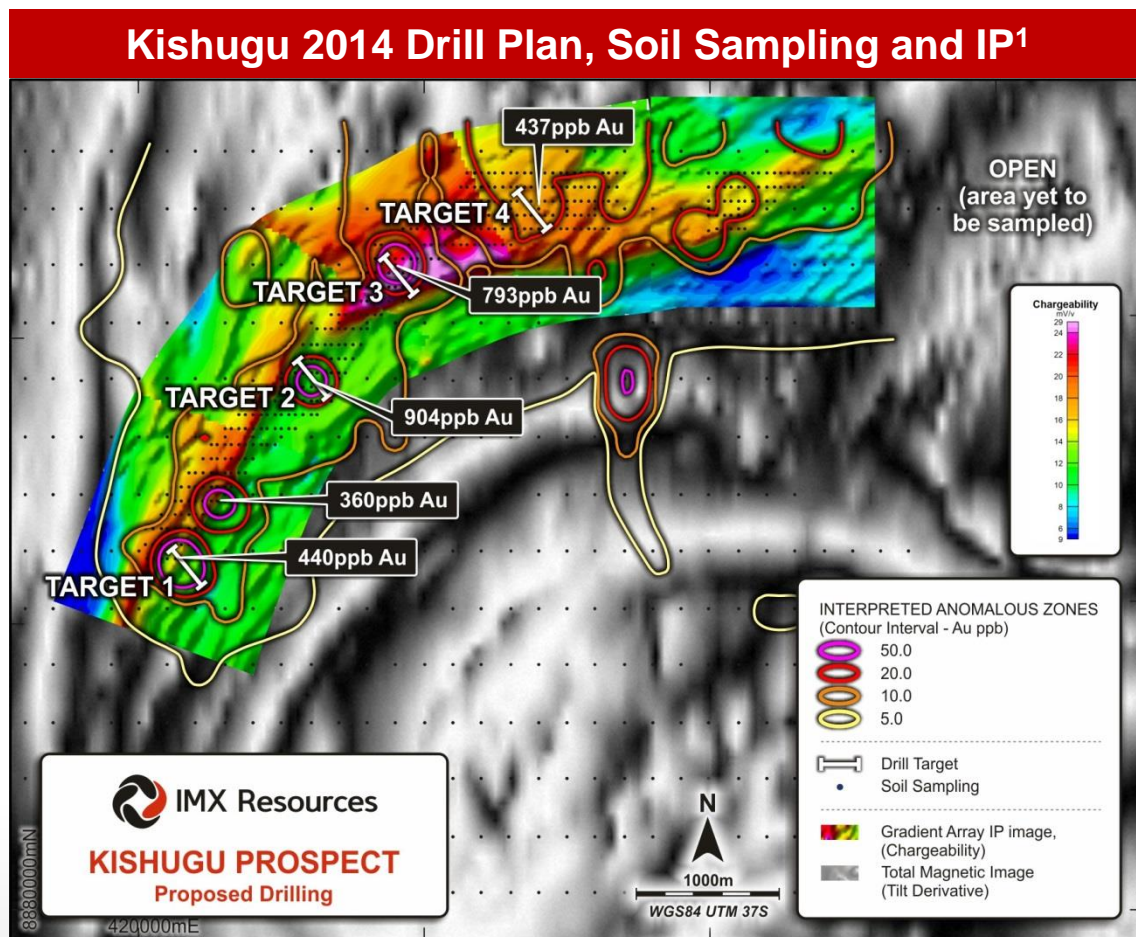




Kishugu Gold Prospect

Targeting strong coincident soil and IP anomalies

- Targeting based primarily on geochemistry and IP
- Target 3 is the priority, with gold anomaly coincident with strong IP anomaly (ASX announcements 14 October 2014 and 26 November 2014)
- Remaining 3 targets based on soil geochemistry
- No drilling in the area and little effective outcrop – unknown geology and regolith condition
- Drilling to commence in May 2015 after cessation of the wet season



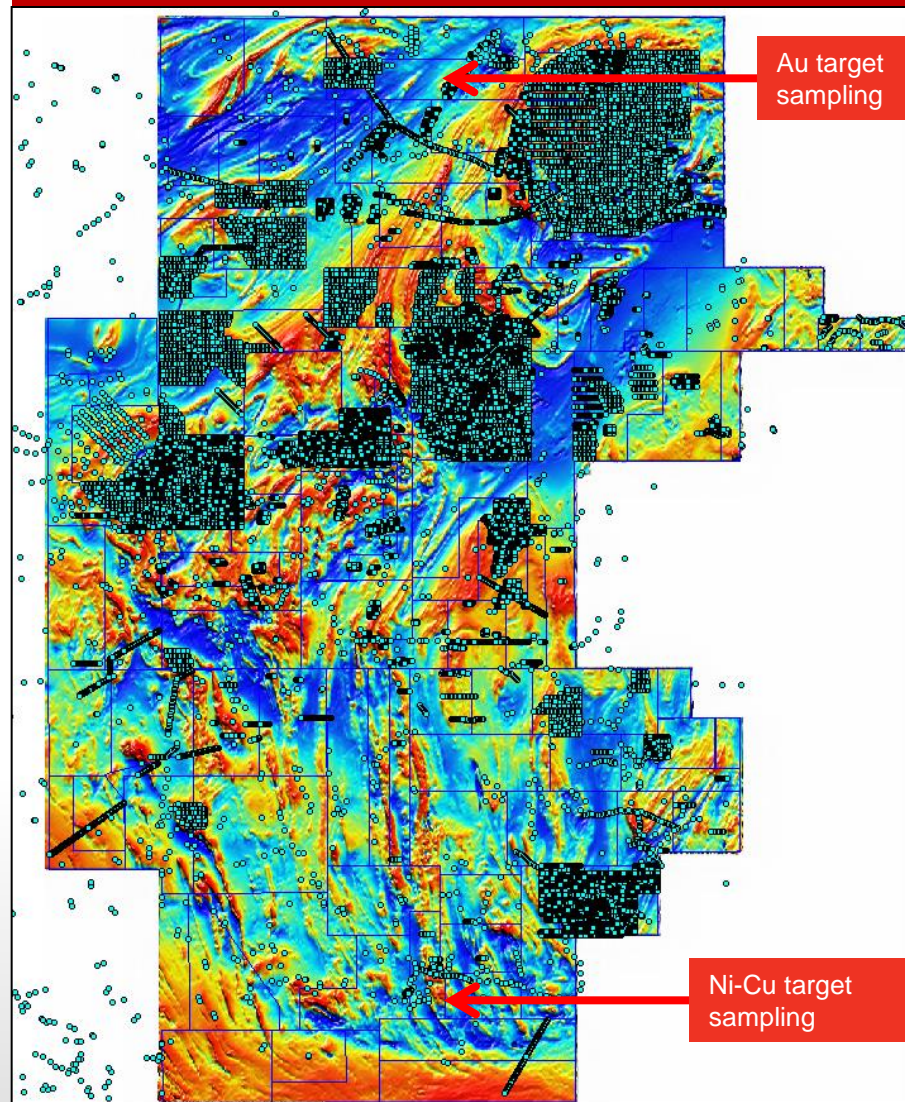


Nachingwea Regional Prospectivity

Large landholding prospective for Graphite, Au, Ni

- 5,800 km² underexplored land holding in Mozambique Belt
- Historical focus and significant expenditure on nickel exploration
- New management focus on regional exploration
 - Targeted sampling program*
- Significant datasets from multiple exploration campaigns
 - 6,800 km² magnetics / 2,200 km² of VTEM*
 - Over 68,000 surface samples (soil/stream/rockchip)*
 - VTEM and soil surveys have identified multiple high-priority graphite and NiS targets*
 - Au anomalies in stream sediment surveys*
- High likelihood of defining and delineating additional targets

Nachingwea – Significant Existing Datasets





- Sound existing relationships with local communities
 - *History of investment in local communities – water bores, school buildings and municipal offices*
 - *5 out of 6 Presidential Awards for CSR*
- Strong supporter of local economy
 - *Employing and training local labour*
- Project development at Chilalo will allow for procurement from local suppliers and investment in local agricultural and food supply capacity
- Established presence in region through many years of exploration work at Nachingwea

CSR: Lionja Ward Administration Office Project





- ◉ Stable democratic Government committed to growing the mining industry
- ◉ Globally competitive mining legislation and tax and regulatory regime
- ◉ Access to skilled and educated workforce
- ◉ Tanzania GDP growth ~7% in 2012 and 2013, forecast similar growth in 2014 and 2015
- ◉ Fourth largest gold producer in Africa



Experienced Country Manager: Heavenlight Kavishe

- ◉ Holds degrees in Engineering and Business Administration
- ◉ Holds post-graduate qualifications in project management, privatisation and utility regulation
- ◉ Has held leadership positions with Tanzanian government agencies
- ◉ Enhances IMX's ability to do business in Tanzania

DISCLAIMER

- This presentation (the “**Presentation**”) has been prepared by IMX. No party other than IMX has authorised or caused the issue of this document, or takes responsibility for, or makes any statements, representations or undertakings in this Presentation. This Presentation does not constitute an offer, invitation or recommendation to subscribe for or purchase any securities and neither this Presentation nor anything contained in it shall form the basis of any contract or commitment.
- This Presentation contains summary information about IMX and its activities which is current as at the date of this Presentation. The information in this Presentation is of a general nature and does not purport to be complete nor does it contain all the information which a prospective investor may require in evaluating a possible investment in IMX or that would be required in a prospectus or product disclosure statement prepared in accordance with the requirements of the Corporations Act 2001 (Cth). This Presentation should be read in conjunction with IMX's other periodic and continuous disclosure announcements lodged with the ASX, which are available at www.asx.com.au.
- This Presentation is not a prospectus, product disclosure statement or other offering document under Australian law (and will not be lodged with the Australian Securities and Investment Commission) or any other law. The offer of IMX ordinary shares to which this presentation relates will only be made to persons to whom offers can be made without a prospectus in accordance with Chapter 6D.2 of the Corporations Act 2001 (Cth).
- The information provided in this Presentation is not intended to be relied upon as advice to investors or potential investors and has been prepared without taking into account the recipient's investment objectives, financial circumstances or particular needs. Any investment decision should be made based solely upon appropriate due diligence. Recipients of this Presentation are advised to consult their own professional advisers. An investment in a listed company, including IMX, is subject to significant risks of loss of income and capital.
- Mineral Resources reported in this presentation have been estimated using JORC 2004 and JORC 2012. Mineral Resource classifications under JORC and NI 43-101 are recognised as equivalent in categories with no material differences.

DISCLAIMER (cont.)

- This presentation includes certain “forward-looking statements”. Forward-looking statements and forward-looking information are frequently characterised by words such as “plan,” “expect,” “project,” “intend,” “believe,” “anticipate,” “estimate” and other similar words, or statements that certain events or conditions “may,” “will” or “could” occur. All statements other than statements of historical fact included in this presentation are forward-looking statements or constitute forward-looking information. Although the Company believes the expectations expressed in such statements and information are based on reasonable assumptions, there can be no assurance that such information or statements will prove to be accurate and actual results and future events could differ materially from those anticipated in such information. Important factors that could cause actual results to differ materially from those in forward-looking statements include satisfaction of conditions precedent in the JV agreement with MMG, market prices of nickel, iron ore and copper, exploitation and exploration successes, capital and operating costs, changes in project parameters as plans continue to be evaluated, continued availability of capital and financing and general economic, market or business conditions, as well as those factors disclosed in the Company's filed documents. Accordingly, readers should not place undue reliance on “forward looking information”. The potential quantity and grade of potential or target mineralisation, including Exploration Target tonnage quantity and grades estimates are conceptual in nature only. These figures are not a Mineral Resource estimate as defined by the 2012 Edition of the Australasian Code for Reporting of Exploration Results, Mineral Resources and Ore Reserves (‘**JORC 2012**’) or Canadian National Instrument 43-101 (‘**NI 43-101**’), as insufficient exploration has been conducted to define a Mineral Resource and it is uncertain if further exploration will result in the target being delineated as a Mineral Resource.
- This Presentation has been prepared in good faith, but no representation or warranty, express or implied, is made as to the fairness, accuracy, completeness, correctness, reliability or adequacy of any statements, estimates, opinions or other information, or to the reasonableness of any assumption or other statement, contained in the Presentation (any of which may change without notice). To the maximum extent permitted by law, IMX and its professional advisers and their related bodies corporate, affiliates and each of their respective directors, officers, partners, employees, advisers and agents and any other person involved in the presentation of the Presentation disclaim all liability and responsibility (including, without limitation, any liability arising from fault or negligence) for any direct or indirect loss or damage which may arise or be suffered through use of or reliance on anything contained in, or omitted from, this Presentation.



Competent Person's Consents (continued...)

DISCLAIMER (cont.)

- There can be no assurance that exploration at the Nachingwea Property, or any other tenements that may be acquired in the future, will result in the discovery of an economic ore deposit. Even if an apparently viable deposit is identified, there is no guarantee that it can be economically exploited. There can be no assurance that the transaction with Fig Tree will complete.
- On 19 June 2014 IMX announced the appointment of Voluntary Administrators to Termite Resources NL ("**Termite**"). Termite was wholly-owned by an incorporated joint venture entity, the board of which comprised nominees of IMX and Taifeng Yuanchuang International Development Co., Ltd. Termite held the joint venture's interests in the Cairn Hill iron ore mine, located 55 kilometres south-west of Cooper Pedy in South Australia.
- The Voluntary Administrator's final report to creditors was issued on 4 September 2014 and the second meeting of creditors took place on 15 September 2014, at which creditors voted to place Termite in liquidation.

COMPETENT PERSON'S CONSENTS

- The Mineral Resource estimate for Sleeping Giant was prepared in accordance with JORC 2012 by Cube Consulting Pty Ltd of Perth ("**Cube**"), Western Australia under the supervision of Patrick Adams, B.Sc., Grad Cert. Geostats, CP (GEO), Principal Consulting Geologist. Mr Adams is a registered member of the Australian Institute of Mining and Metallurgy and the Australian Institute of Geoscientists and has sufficient relevant experience to qualify as a Competent Person under the JORC 2012 and an independent qualified person under NI 43-101. Mr Adams has verified the data underlying the information contained in this presentation and approves and consents to the inclusion of the data in the form and context in which it appears.
- Information relating to the 2012 Mineral Resource estimate (other zones in the Ntaka Hill Nickel Sulphide Project) and the 2013 Zeppelin Mineral Resource estimate, was prepared in accordance with JORC 2004 by Roscoe Postle Associates Inc. of Toronto, under the supervision of Chester Moore, P. Eng., P. Geo., Principal Geologist. It has not been updated since to comply with JORC 2012 on the basis that the information has not materially changed since it was last reported. Mr. Moore is an independent qualified person as defined by NI 43-101 and a Competent Person under JORC 2004. This information, which forms part of the Ntaka Hill global Mineral Resource estimate, has been reviewed by Patrick J. Adams, B.Sc., Grad Cert. Geostats, Principal Consulting Geologist, of Cube who approves and consents to the inclusion of the data in the form and context in which it appears.

COMPETENT PERSON'S CONSENTS (cont.)

- Information relating to exploration results at the Chilalo Project, located on the Nachingwea Property, is based on data collected under the supervision of Mr Nick Corlis, in his capacity as Executive Director, Exploration. Mr Corlis, BSc (Hons) MSc, is a registered member of the Australian Institute of Geoscientists and has sufficient experience that is relevant to the style of mineralisation and type of deposit under consideration and the activity being undertaken to qualify as a Competent Person under JORC 2012 and as a qualified person under NI 43-101. Mr. Corlis has verified the data underlying the information contained in this announcement and approves and consents to the inclusion of the data in the form and context in which it appears.
- The information in this announcement that relates to in situ Mineral Resources for Chilalo is based on information compiled by Mr. Grant Louw under the direction and supervision of Dr Andrew Scogings, who are both full-time employees of CSA Global Pty Ltd. Dr Scogings takes overall responsibility for the report. Dr Scogings is a Member of both the Australian Institute of Geoscientists and Australasian Institute of Mining and Metallurgy and has sufficient experience, which is relevant to the style of mineralisation and type of deposit under consideration, and to the activity he is undertaking, to qualify as a Competent Person in terms of the 'Australasian Code for Reporting of Exploration Results, Mineral Resources and Ore Reserves' (JORC Code 2012 Edition). Dr Scogings consents to the inclusion of such information in this announcement in the form and context in which it appears.
- Information in this presentation relating to technical information on exploration results at the Nachingwea Property, other than the Chilalo Project, is based on data collected by the Company's former joint venture partner, Continental Nickel Limited, under the supervision of joint venture company geologists since 2006 and on data collected by IMX. Mr Nick Corlis, in his capacity as a full time employee of the Company holding the position of Executive Director Exploration, has been working on the Nachingwea Property since May 2014. Mr Corlis BSc (Hons) MSc, is a registered member of the Australian Institute of Geoscientists and has sufficient relevant experience to qualify as a Competent Person under JORC 2012 and as a qualified person under NI 43-101. Mr. Corlis has verified the data underlying the information contained in this announcement and approves and consents to the inclusion of the data in the form and context in which it appears.