

Kingston Resources Limited

Six Mile Hill Project

South Australian Resources & Energy Investment Conference

13 April 2015

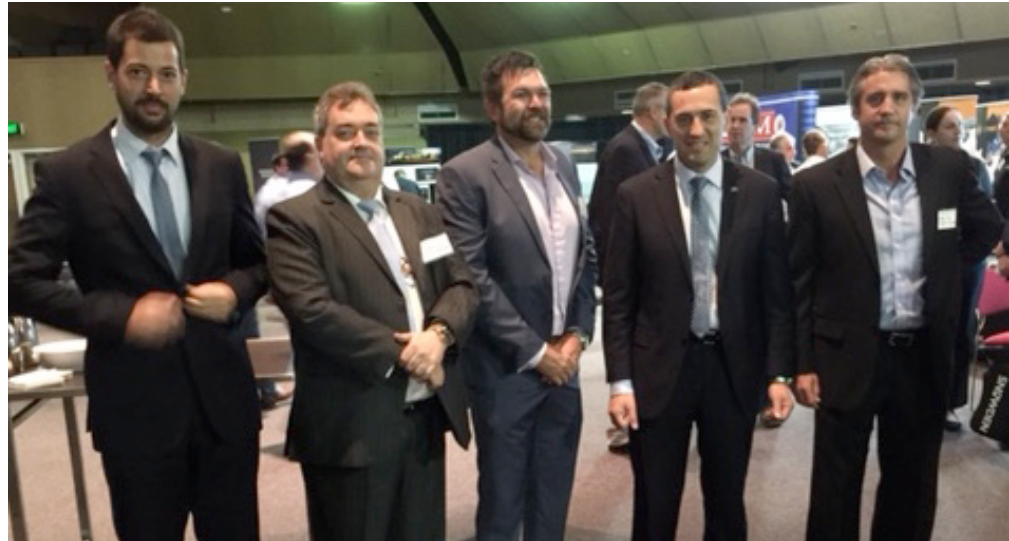
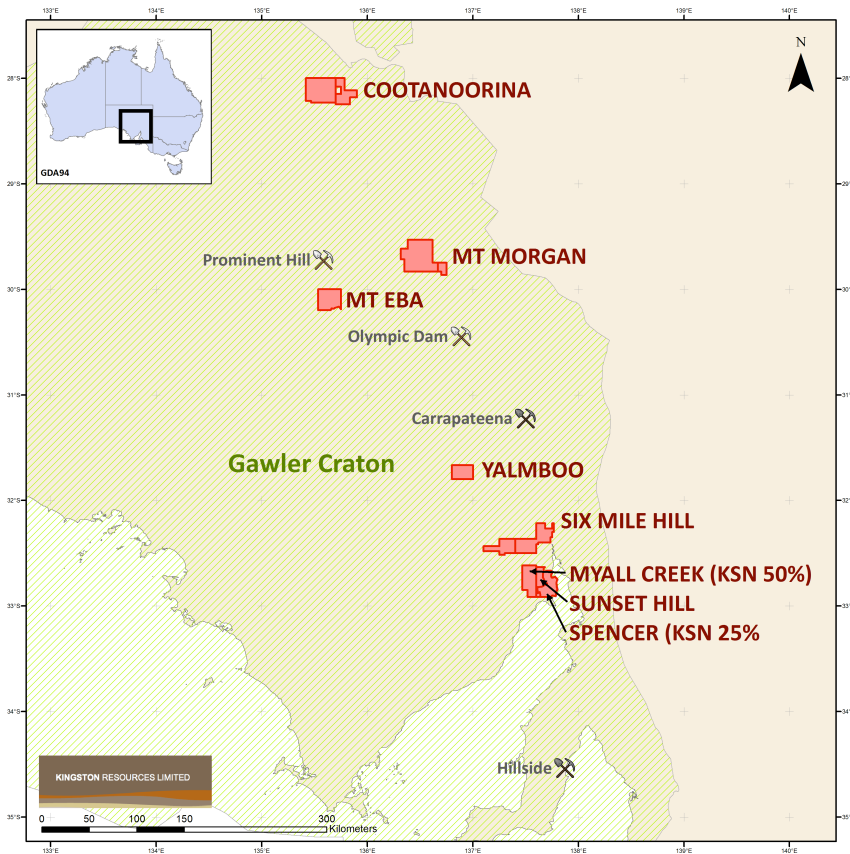
Kingston Resources Ltd

25-27 Jewell Parade North Fremantle, Western Australia 6159

t +61 8 9336 6619 **f** +61 8 9335 3565 **w** www.kingstonresources.com.au **e** info@kingstonresources.com.au

KINGSTON RESOURCES LIMITED

Kingston Resources is a junior exploration company focused on copper and gold in South Australia
Kingston's Six Mile Hill project was selected for the Mineral Systems Drilling Program 2015



from left

Executive Director

Non-executive Chairman

Technical Lead

Minister Koutsantonis*

Director / Company Secretary

Stuart Rechner BSc (Geology) LLB

Jonathan Davies BJuris LLB

Barry Bourne BSc (Hons) FAIG

*does not work for Kingston

Mathew Whyte BCom CPA FCSA

Mineral Systems Drilling Program 2015



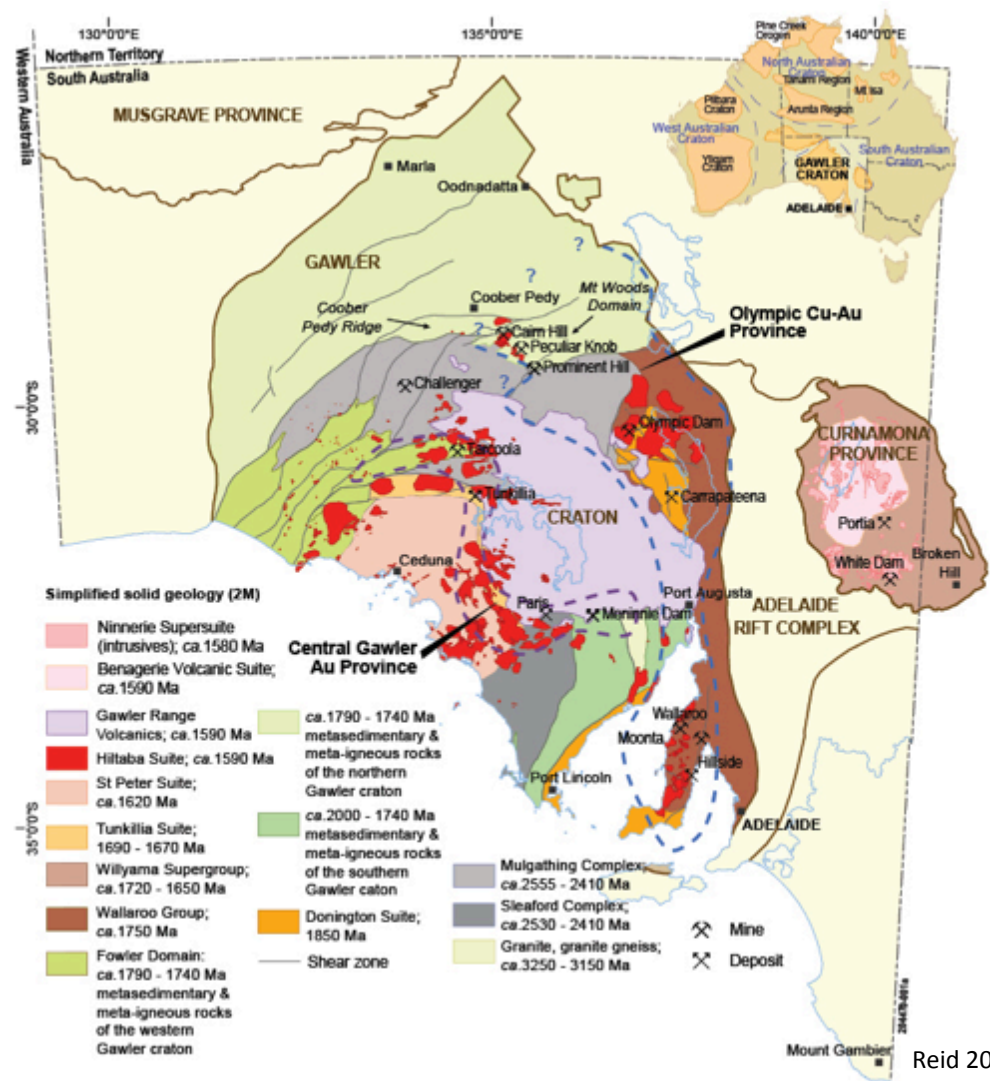
- Aim: map and understand various components of mineral systems in the northern Eyre Peninsula region with the potential to lead to the discovery of new mineral deposits.
- DSD providing \$2 million in funding through the PACE Frontiers Initiative.
- DET CRC deploying world first innovative technologies:
 - Lab-at-Rig® (top-of-hole XRF geochemistry and XRD mineralogy on drill cuttings)
 - AutoSonde™ (downhole geophysical sensing)
 - Wireless Sub (rig performance monitoring)
- Includes diamond drilling at Kingston's Six Mile Hill project.



Gawler Craton and the 1590 Ma thermal event

The Gawler Craton

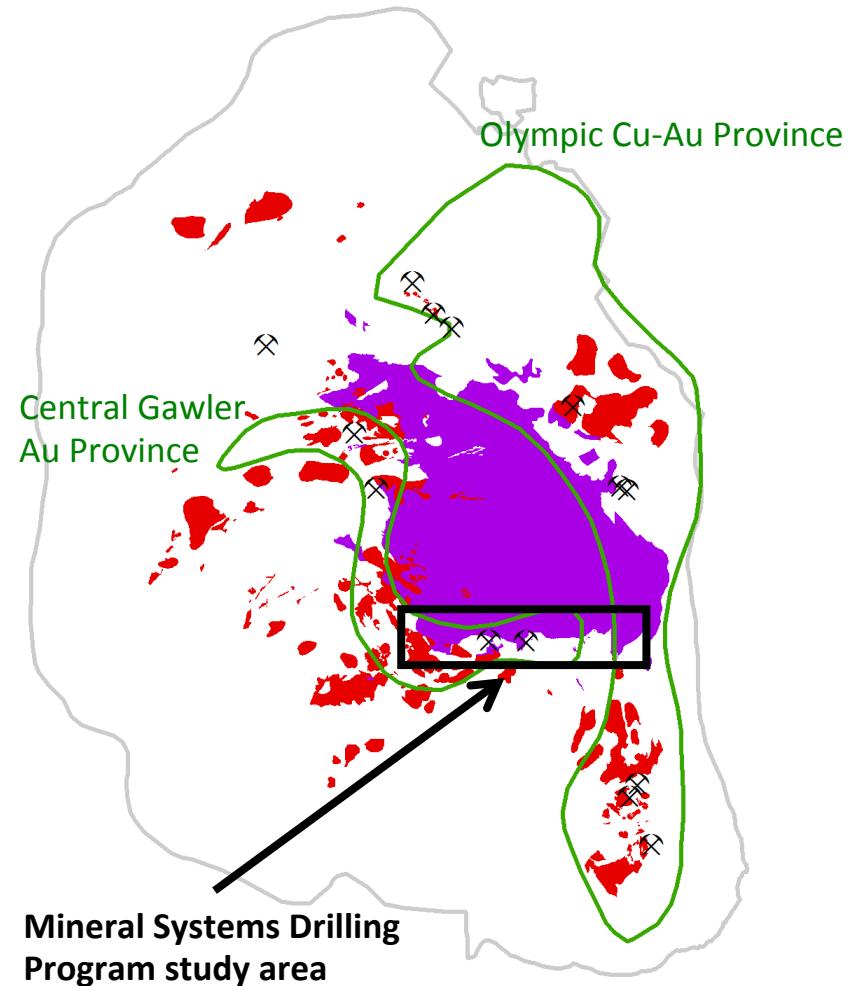
- Ancient piece of continental crust that has survived billions of years of plate tectonics
 - Olympic Copper-Gold Province
 - Central Gawler Gold Province
- Underwent a major thermal event 1.59 billion years ago
 - the “1590 Ma thermal event”
 - Magma intrusions rise up
 - Volcanic flows on surface
 - Existing rocks metamorphosed



Reid 2014

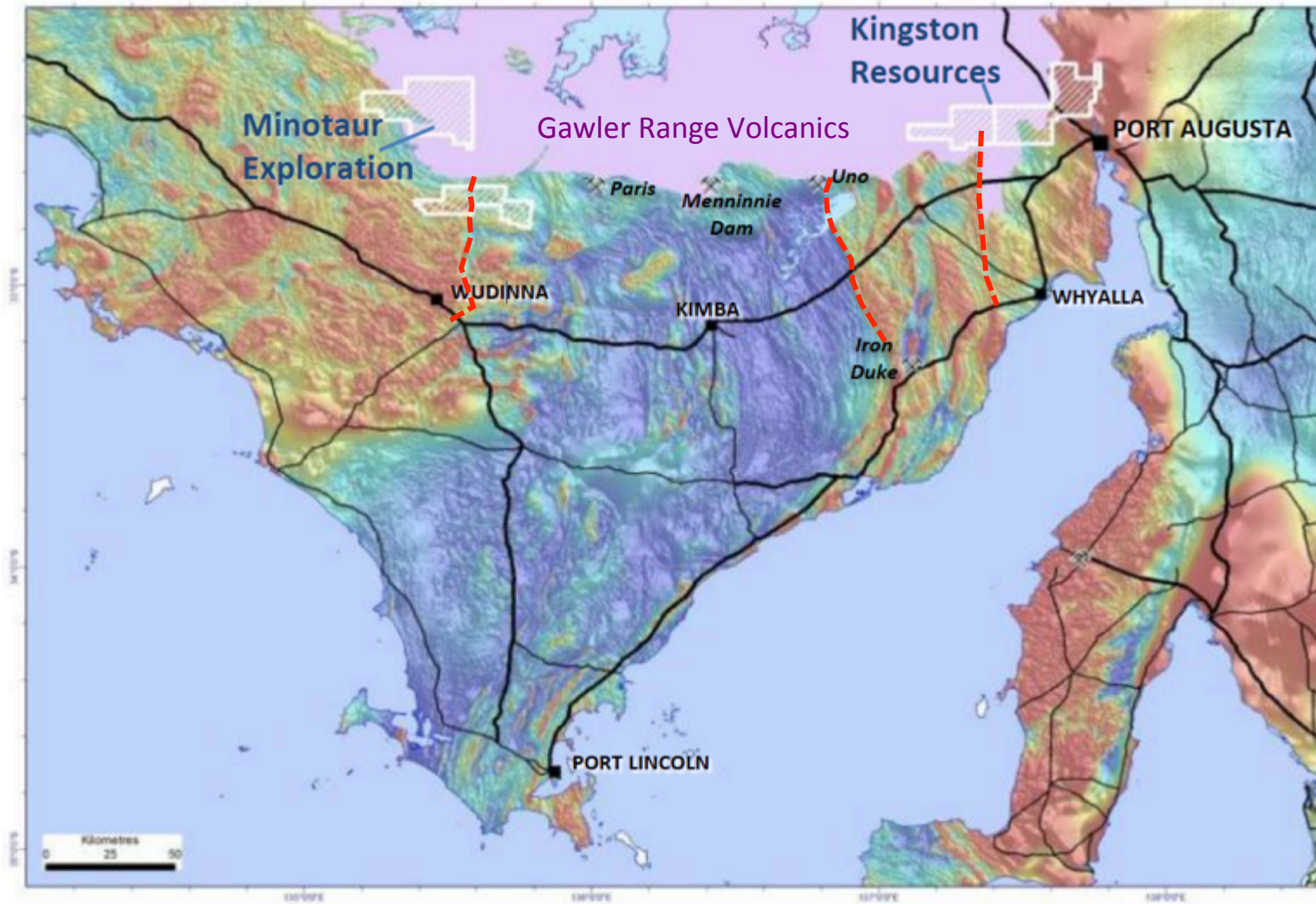
1590 Ma thermal event

- Key rocks of the 1590 Ma event:
 - Hiltaba Suite granites
 - Gawler Range Volcanics
- Mineralisation in both the Olympic Copper-Gold Province and Central Gawler Gold Province:
 - temporally related to 1590 Ma event
 - spatially related to Hiltaba Suite granites and Gawler Range Volcanics
- Recent exploration on the northern Eyre Peninsula has identified a potential new mineral province
 - Preliminary dating suggests mineralisation related to 1590 Ma event

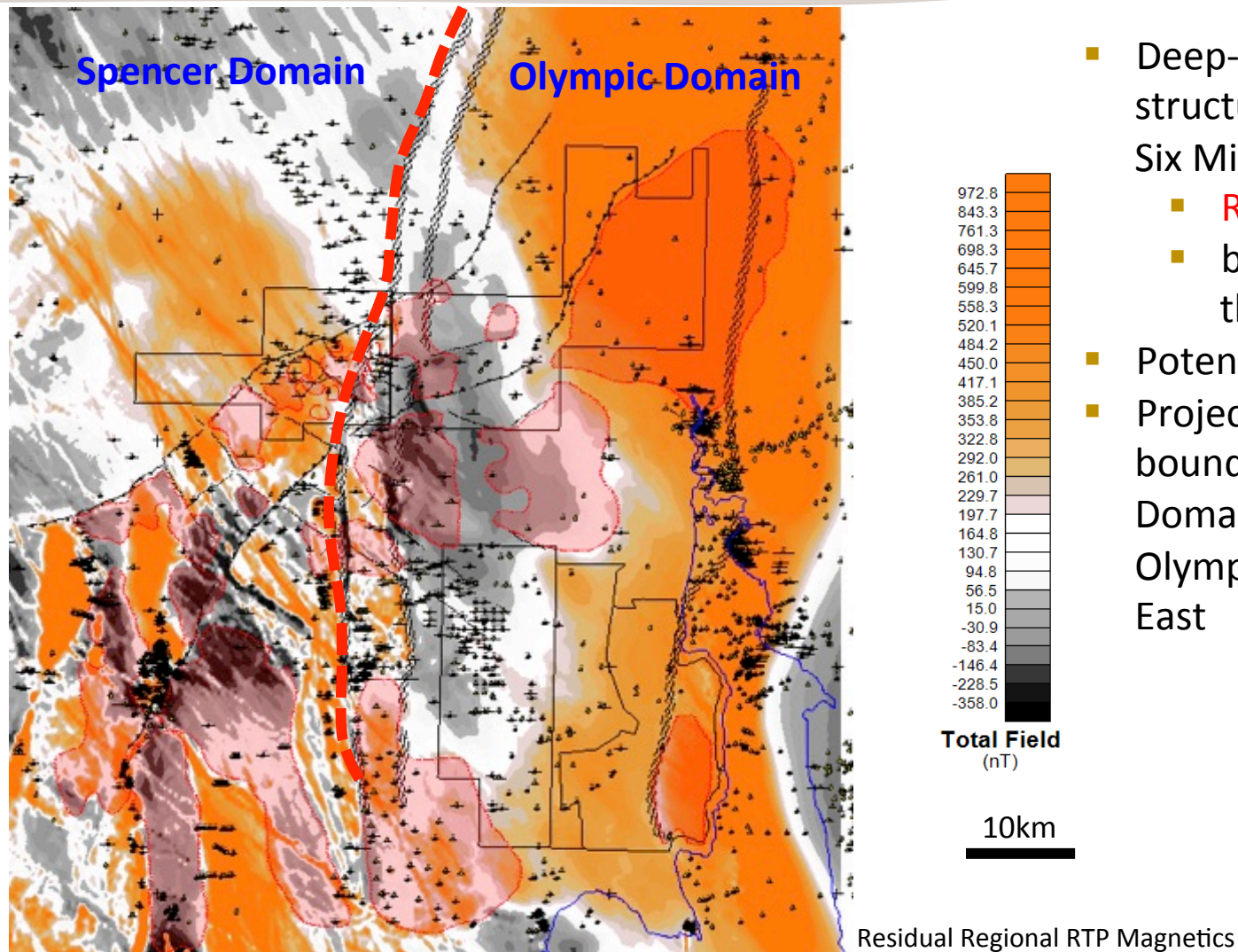


after McAvaney & Wade 2014

Mineral Systems Drilling Program - Study Area

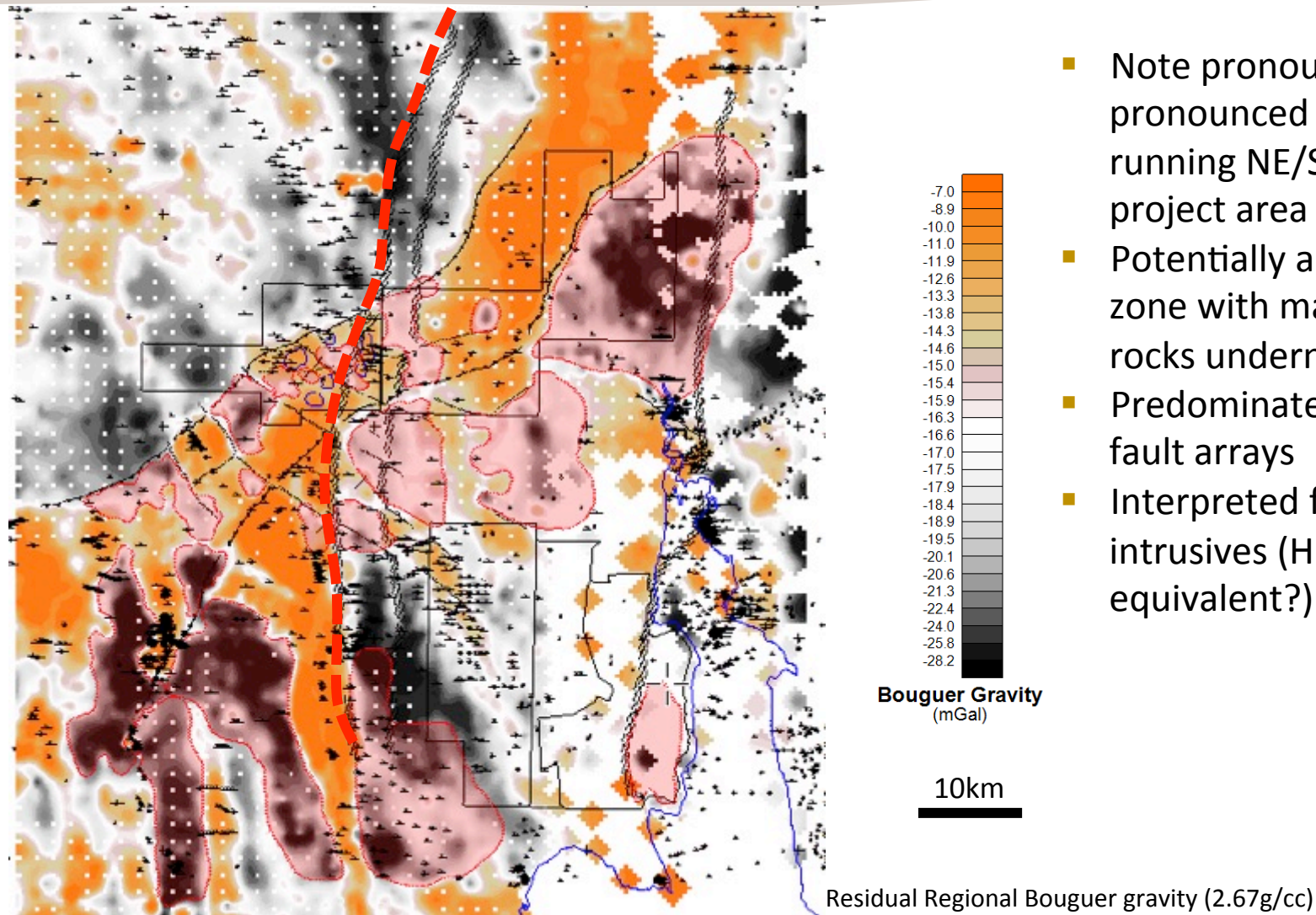


Six Mile Hill Project - District Targeting (Magnetics)



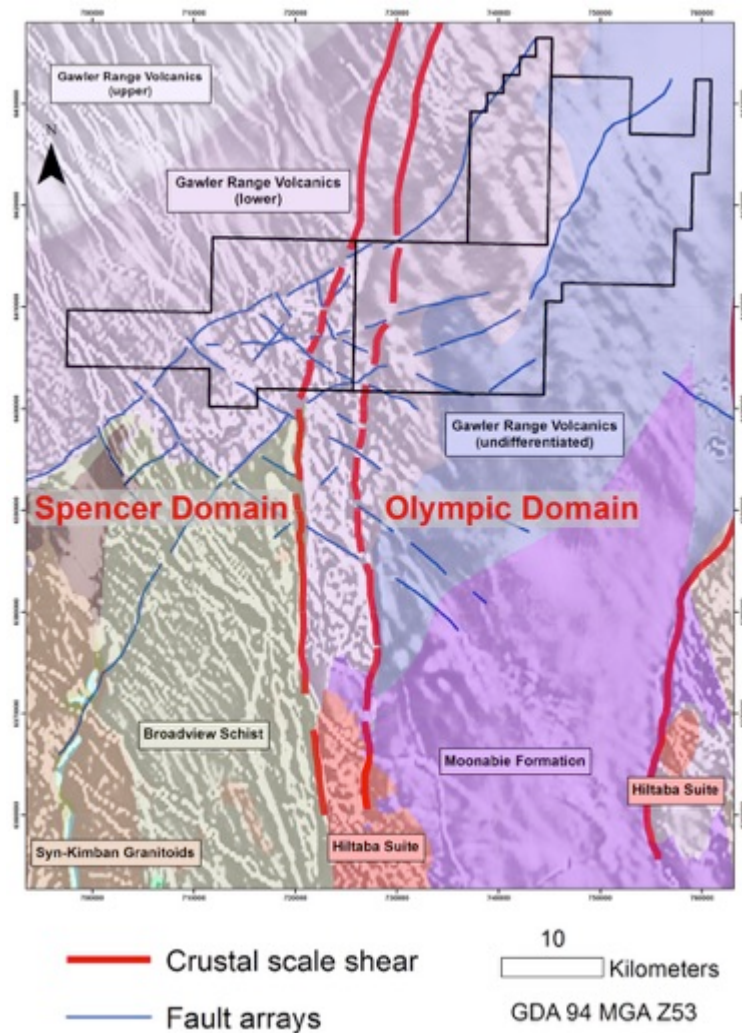
- Deep-seated crustal scale structure runs through the Six Mile Hill project area:
 - **Roopena Shear Zone**
 - bounding structure of the Olympic Domain
- Potential fluid conduit
- Project area straddles boundary between Spencer Domain to the West and Olympic Domain to the East

Six Mile Hill Project - District Targeting (Gravity)

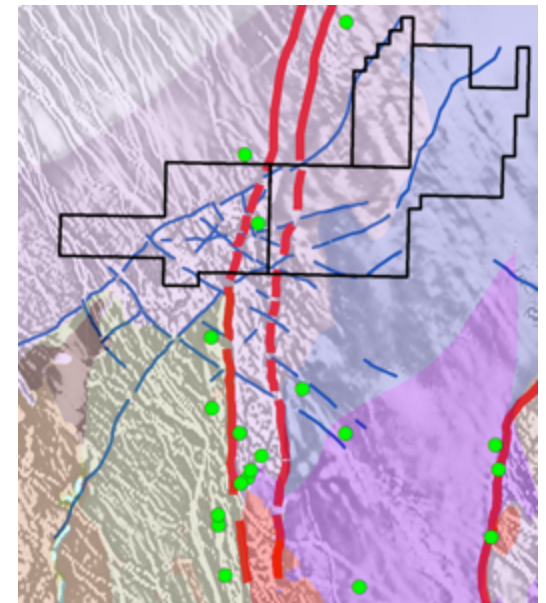


- Note pronounced gravity ridge running NE/SW through project area
- Potentially an uplifted zone with mafic source rocks underneath
- Predominately NE / NW fault arrays
- Interpreted felsic intrusives (Hiltaba equivalent?) in pink

Six Mile Hill Project – District Targeting (Geology)



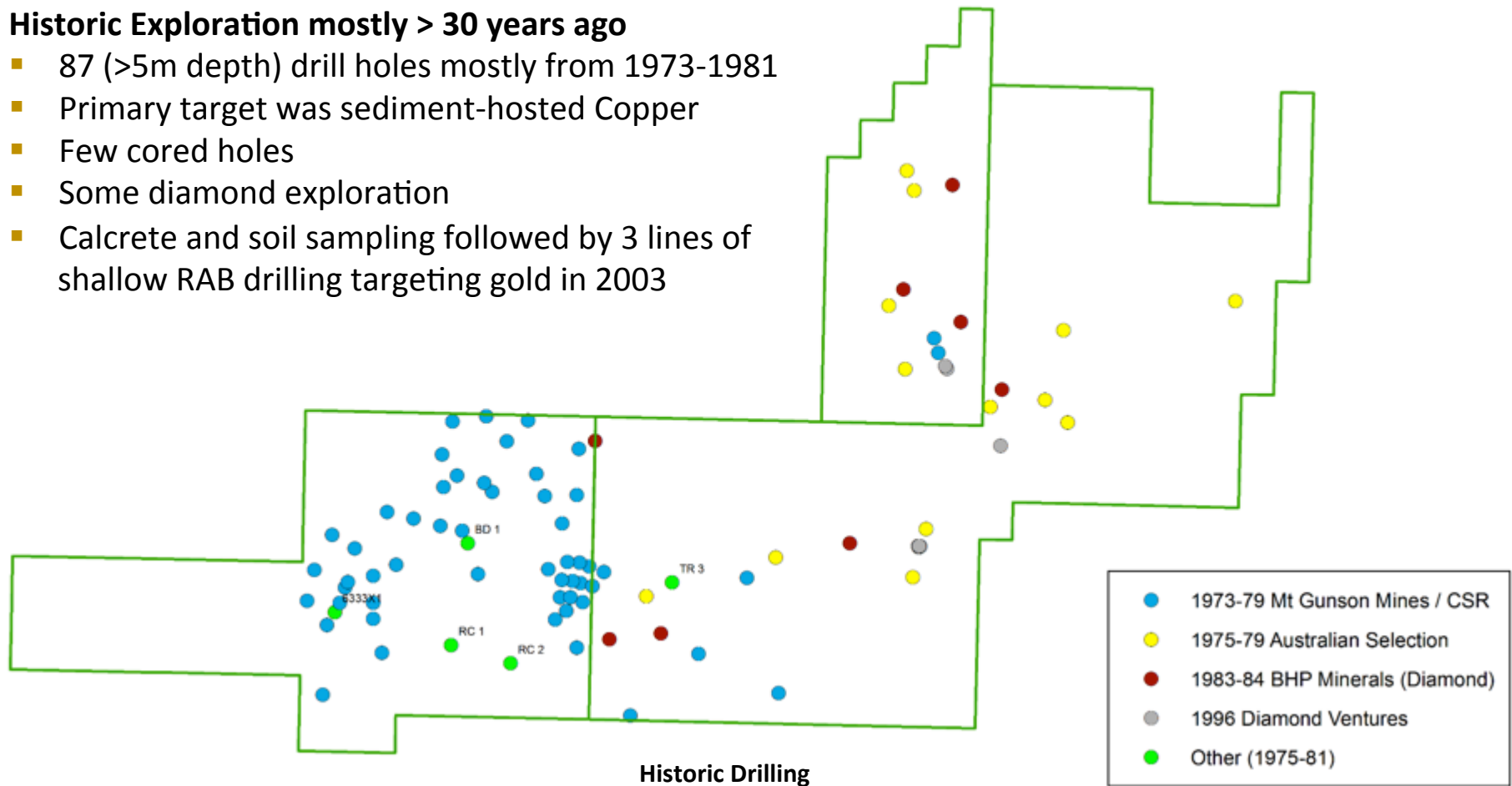
- Gawler Range Volcanics seen in outcrop and historic drilling at Six Mile Hill
- Known Hiltaba Suite granites to the south
- Recent and historic copper prospects and occurrences to the south of Six Mile Hill along the Roopena Shear Zone



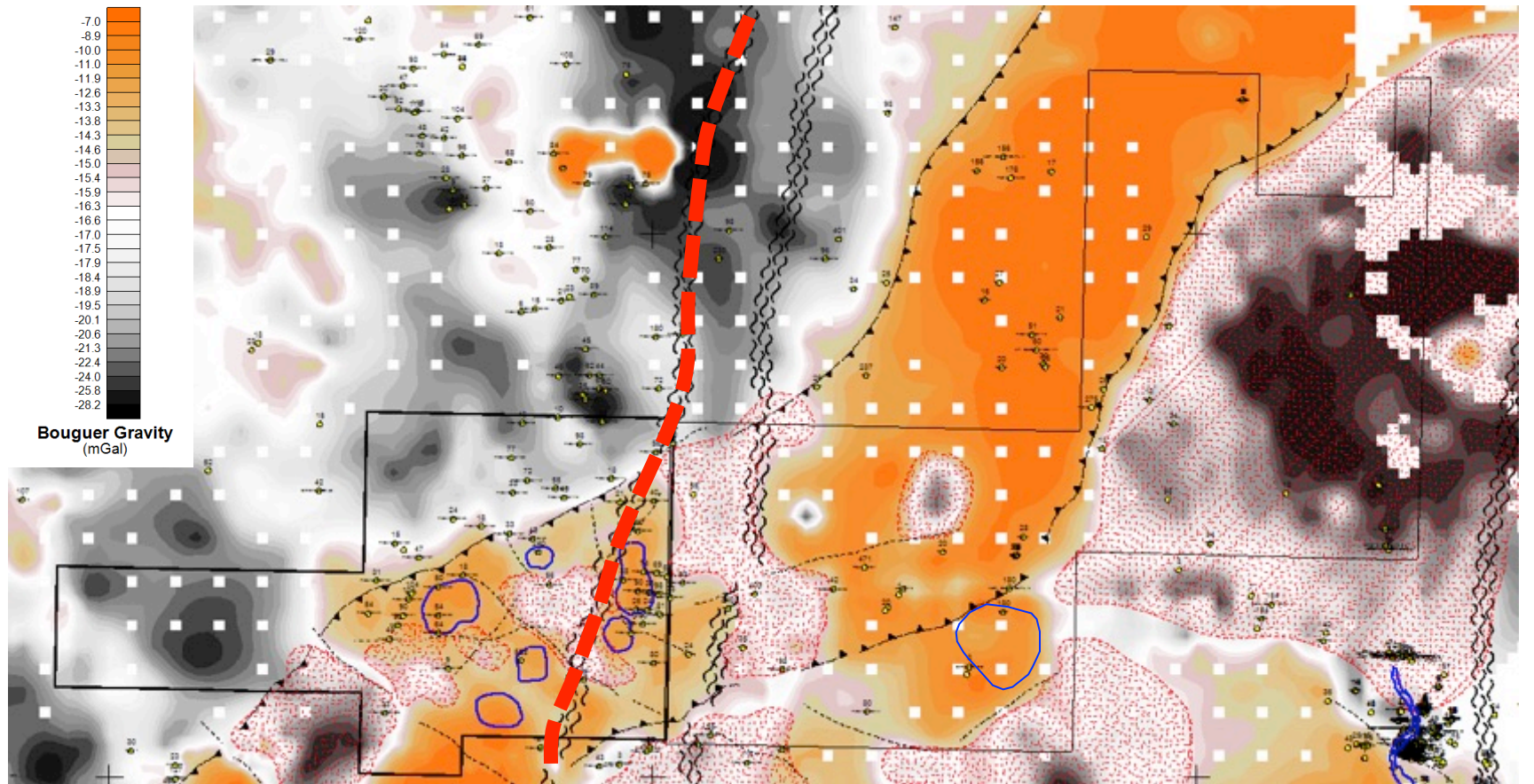
Six Mile Hill Project – Historic Exploration

Historic Exploration mostly > 30 years ago

- 87 (>5m depth) drill holes mostly from 1973-1981
- Primary target was sediment-hosted Copper
- Few cored holes
- Some diamond exploration
- Calcrete and soil sampling followed by 3 lines of shallow RAB drilling targeting gold in 2003



Six Mile Hill Project – Prospect Targeting (Gravity)

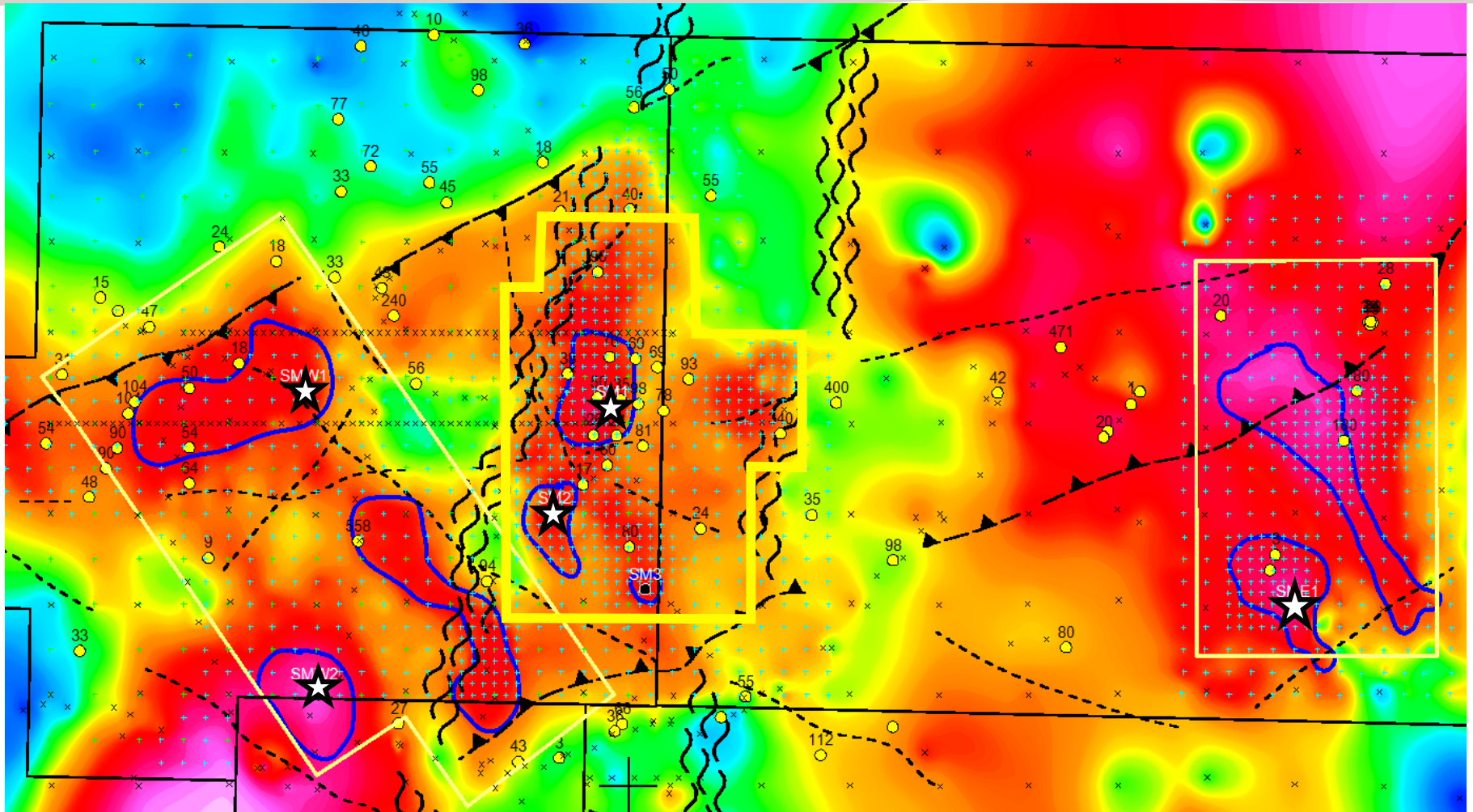


Residual Regional Bouguer gravity (2.67g/cc)

tenement width ~60km

- Gravity features of interest shown as blue shapes
- Interpreted felsic intrusives (Hiltaba equivalent?) in pink

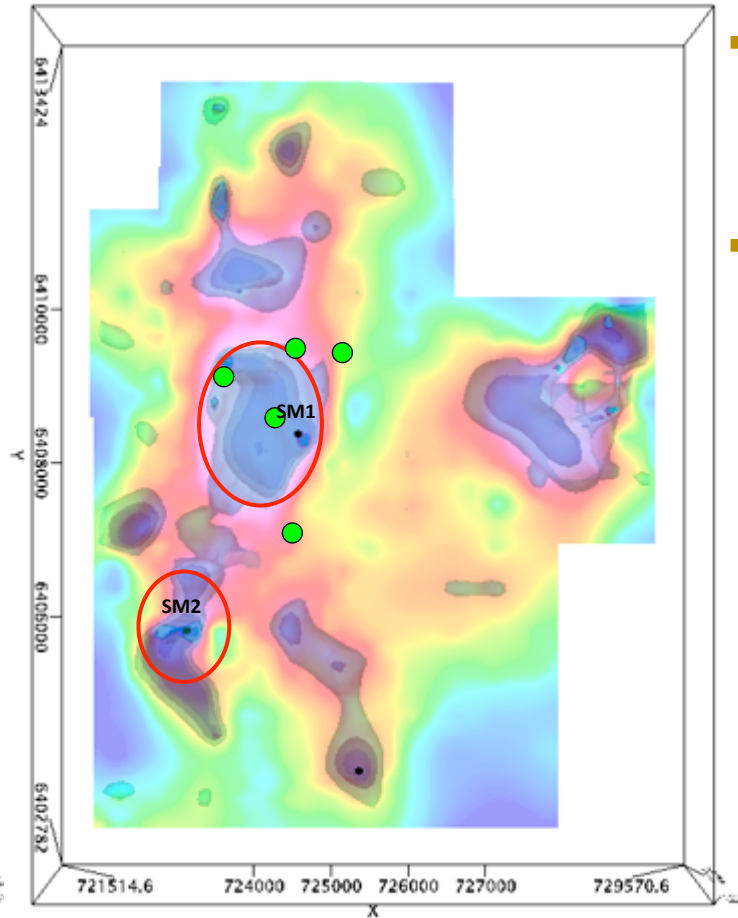
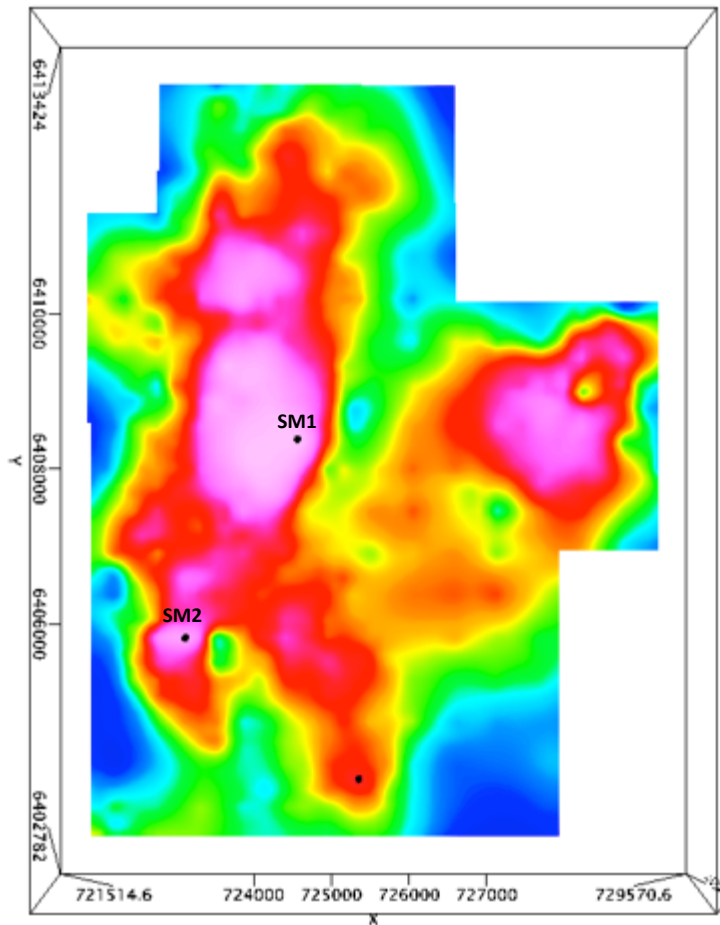
Six Mile Hill Project – Prospect Targeting (Modelling Areas)



Residual Regional Bouguer gravity (2.67g/cc)

Figure width ~33km

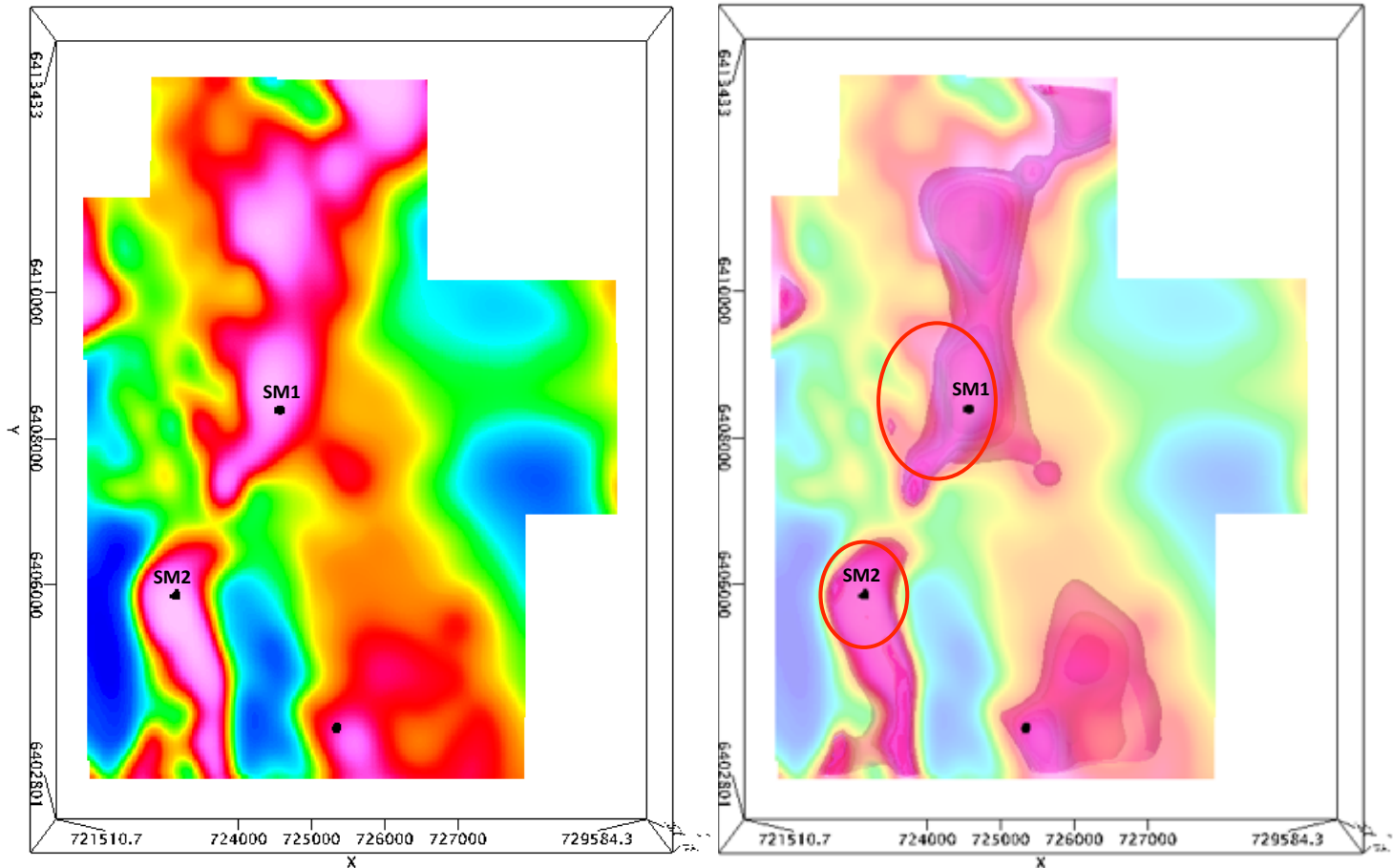
Six Mile Hill Project - Primary Target (Gravity)



- 0.15g/cc density isosurfaces at SM1 & SM2 are <250m from surface.
- Shallow sediment-hosted copper mineralisation sediments above target area.

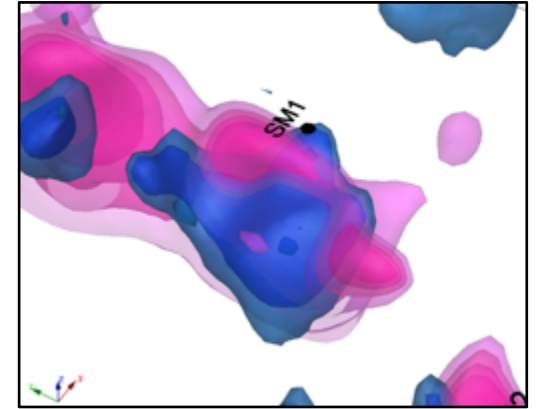
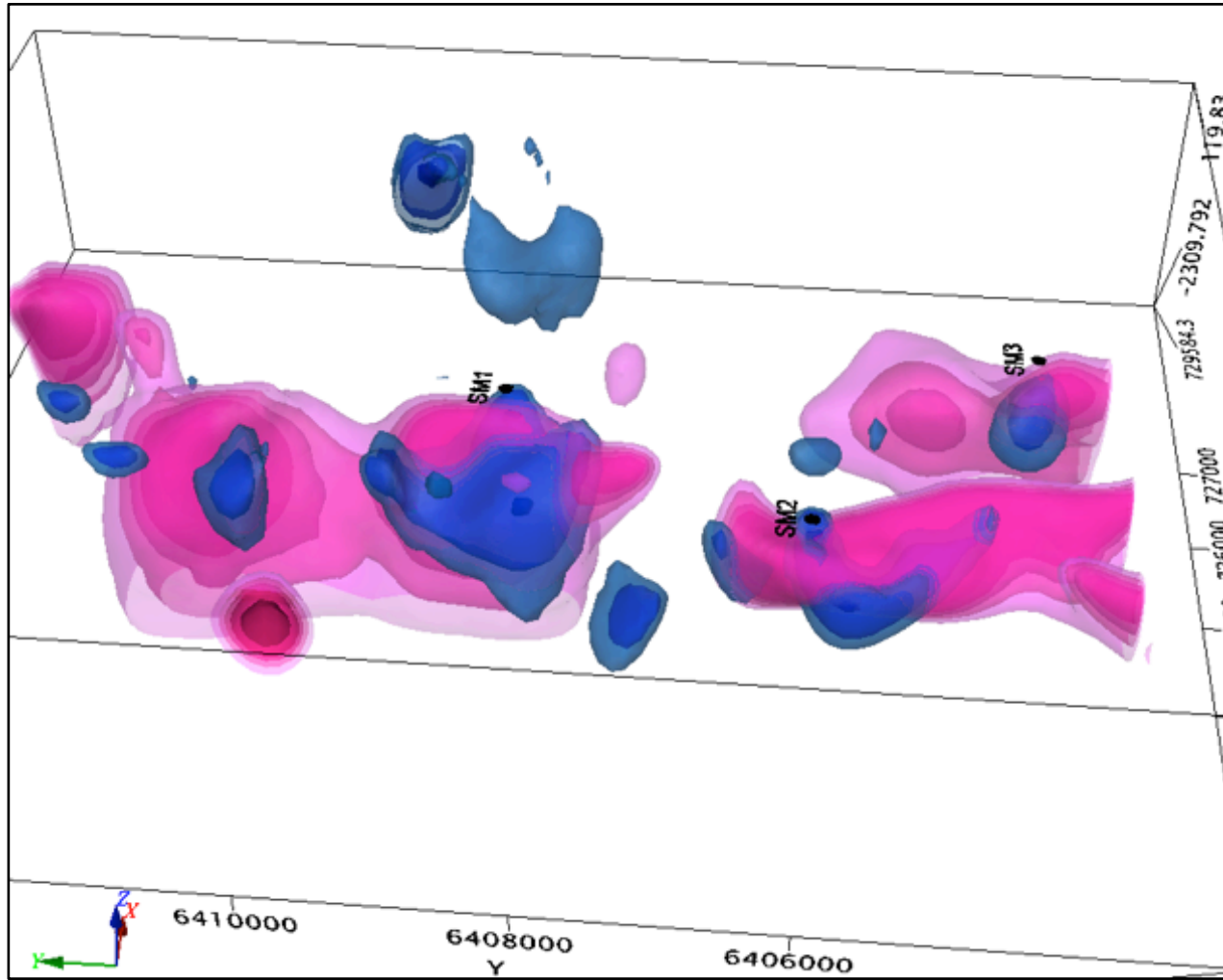
Residual detailed Bouguer gravity (2.67g/cc) with preliminary 100m x 100m x 50m gravity model on the right. Gravity (blue) - Isosurfaces of density, +0.075g/cc light blue outer shell, +0.15g/cc in dark blue inner Main target areas shown in red.

Six Mile Hill Project - Primary Target (Magnetics)

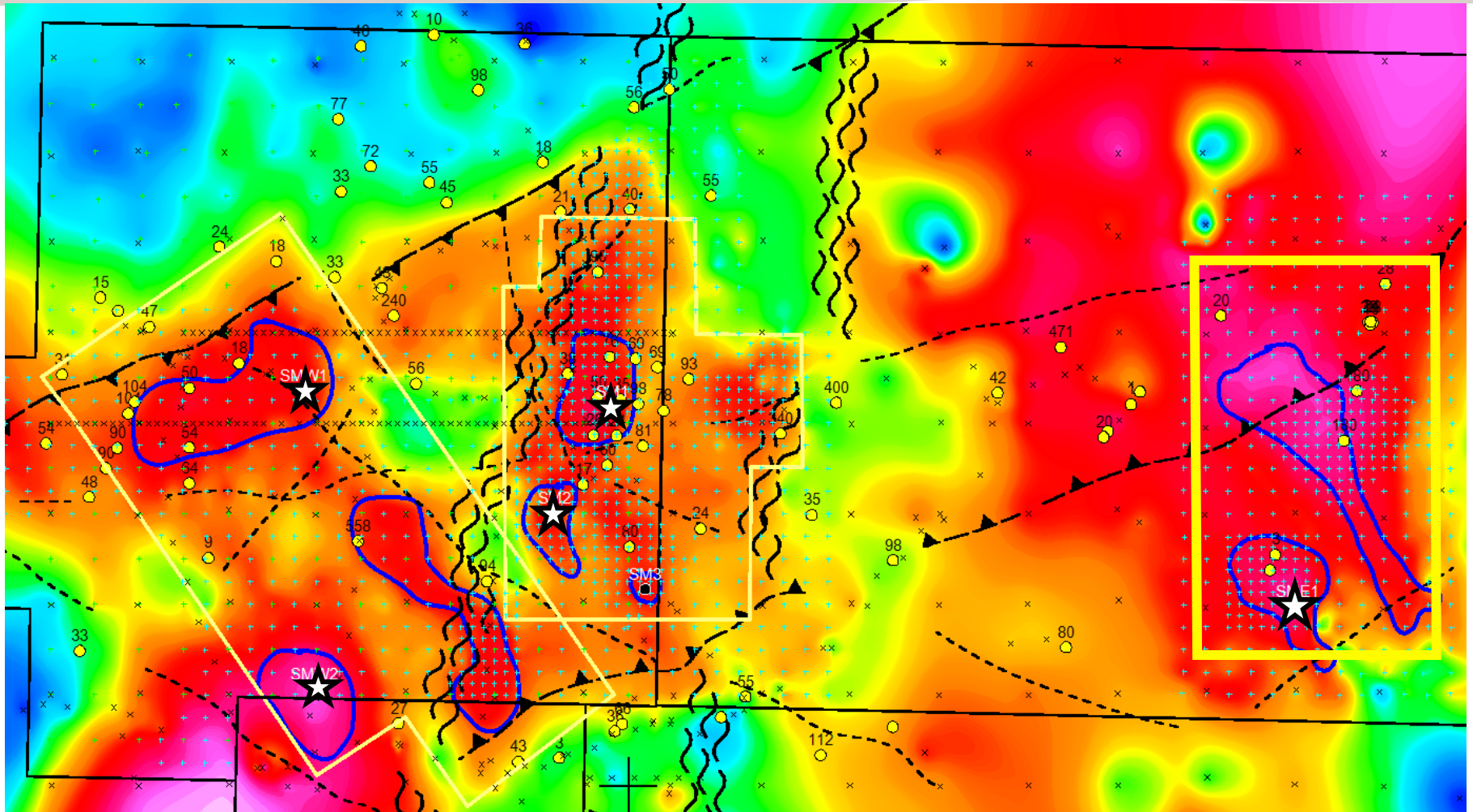


Reduction to Pole magnetic grid with preliminary 100m x 100m x 50m magnetics model on the right.
Magnetic (pink) – Isosurfaces of magnetic susceptibility.
Main Target areas shown in red.

Six Mile Hill Project - Primary Target (Model)



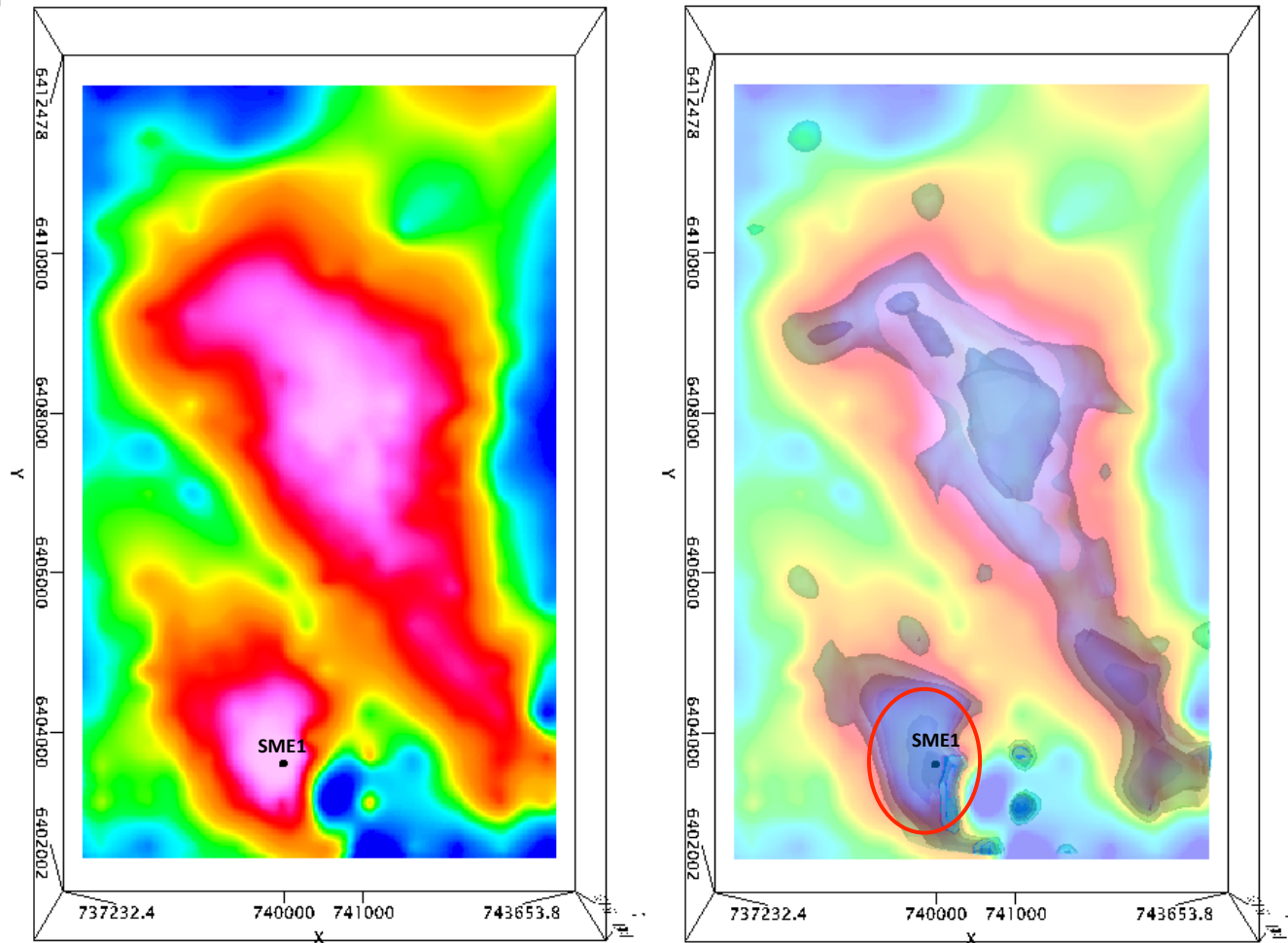
Six Mile Hill Project – Prospect Targeting (Modelling Areas)



Residual Regional Bouguer gravity (2.67g/cc)

Figure width ~33km

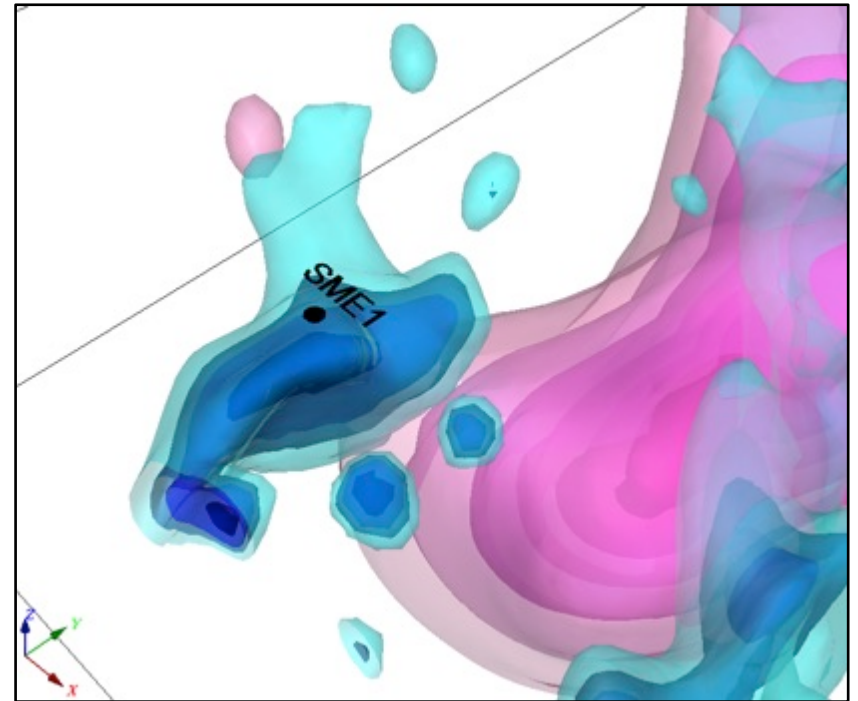
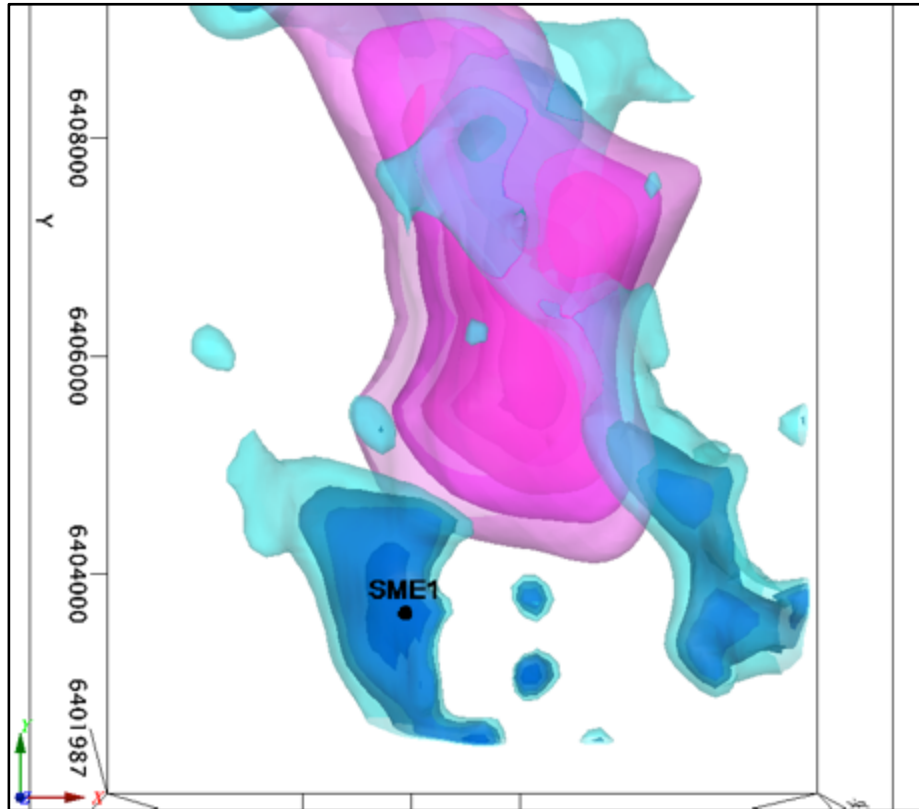
Six Mile Hill Project - Eastern Target



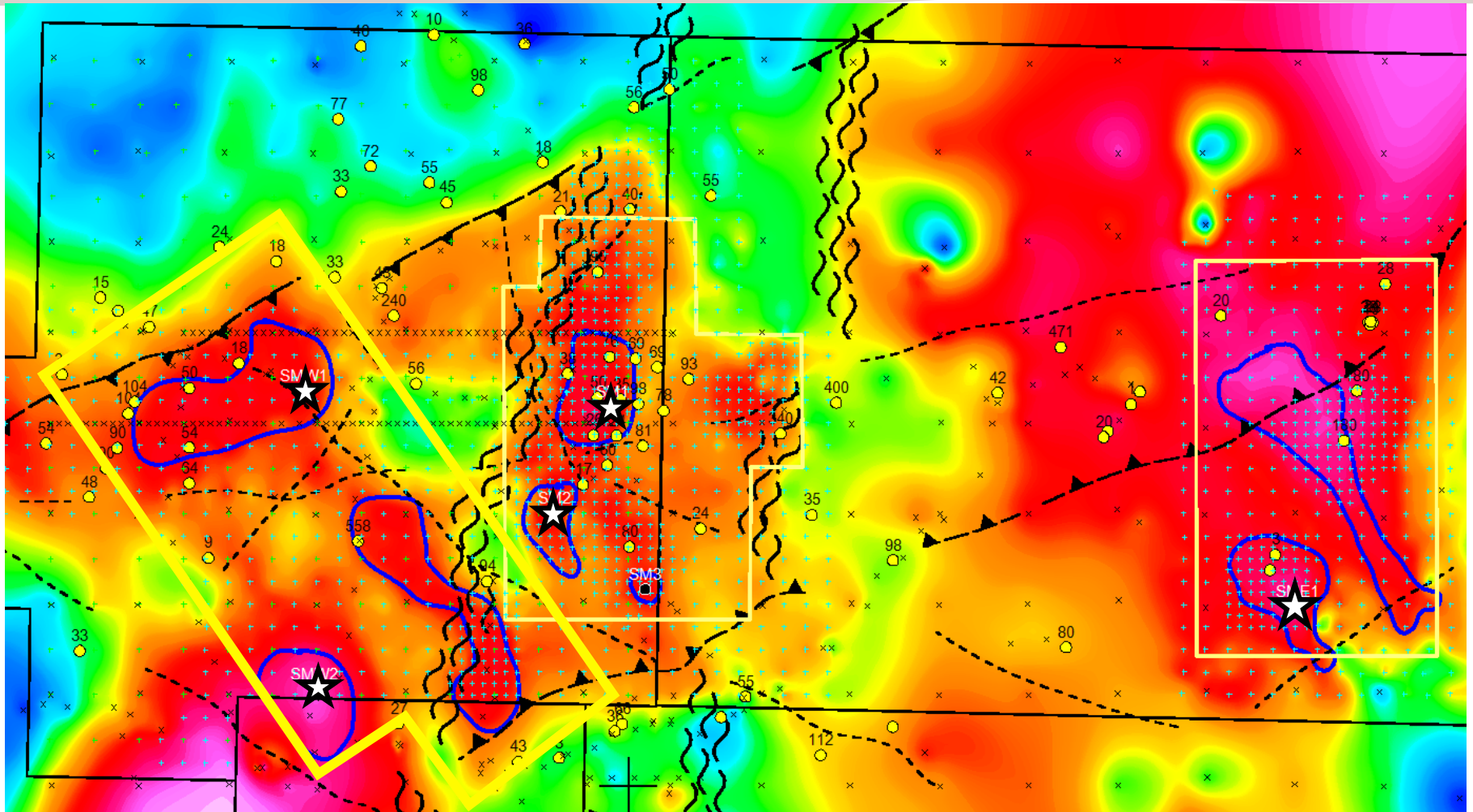
- Most of the 0.15 g/cc density iso-surfaces are <350m from surface.
- The large central feature, however, is ~1000m from surface

Residual detailed Bouguer gravity (2.67g/cc) for the Six Mile East area with preliminary 100m x 100m x 50m gravity model on the right. Gravity (blue) – Isosurfaces of density, +0.075g/cc light blue outer shell, +0.15g/cc in dark blue inner. Target area shown in red.

Six Mile Hill Project – Six Mile Hill East



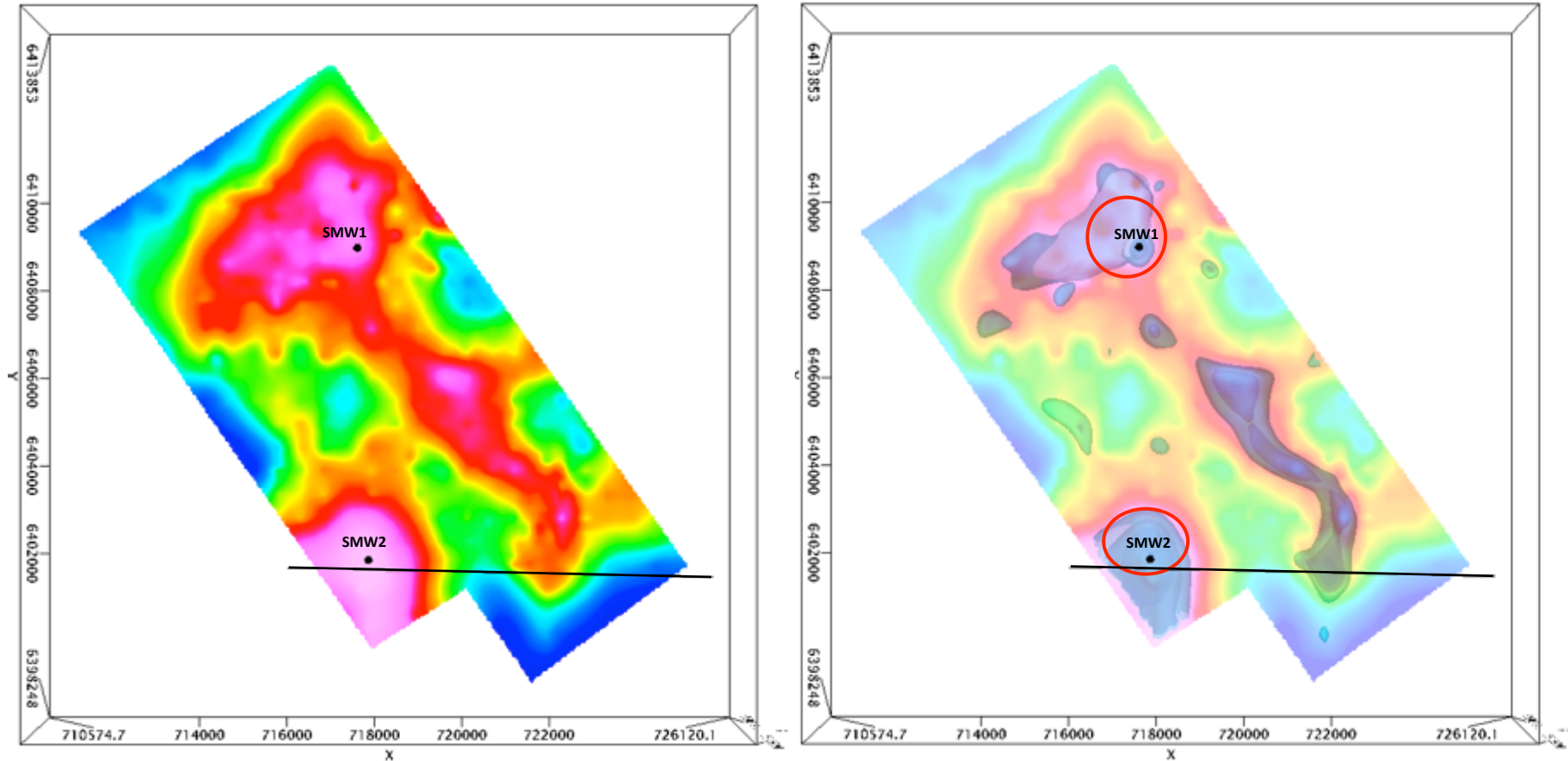
Six Mile Hill Project – Prospect Targeting (Modelling Areas)



Residual Regional Bouguer gravity (2.67g/cc)

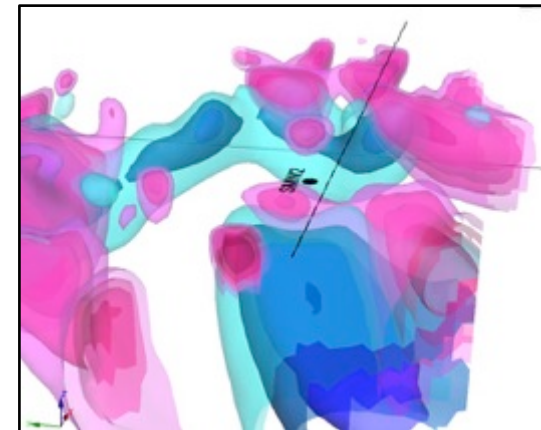
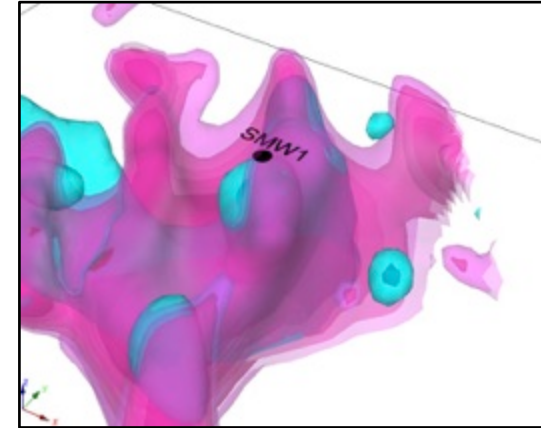
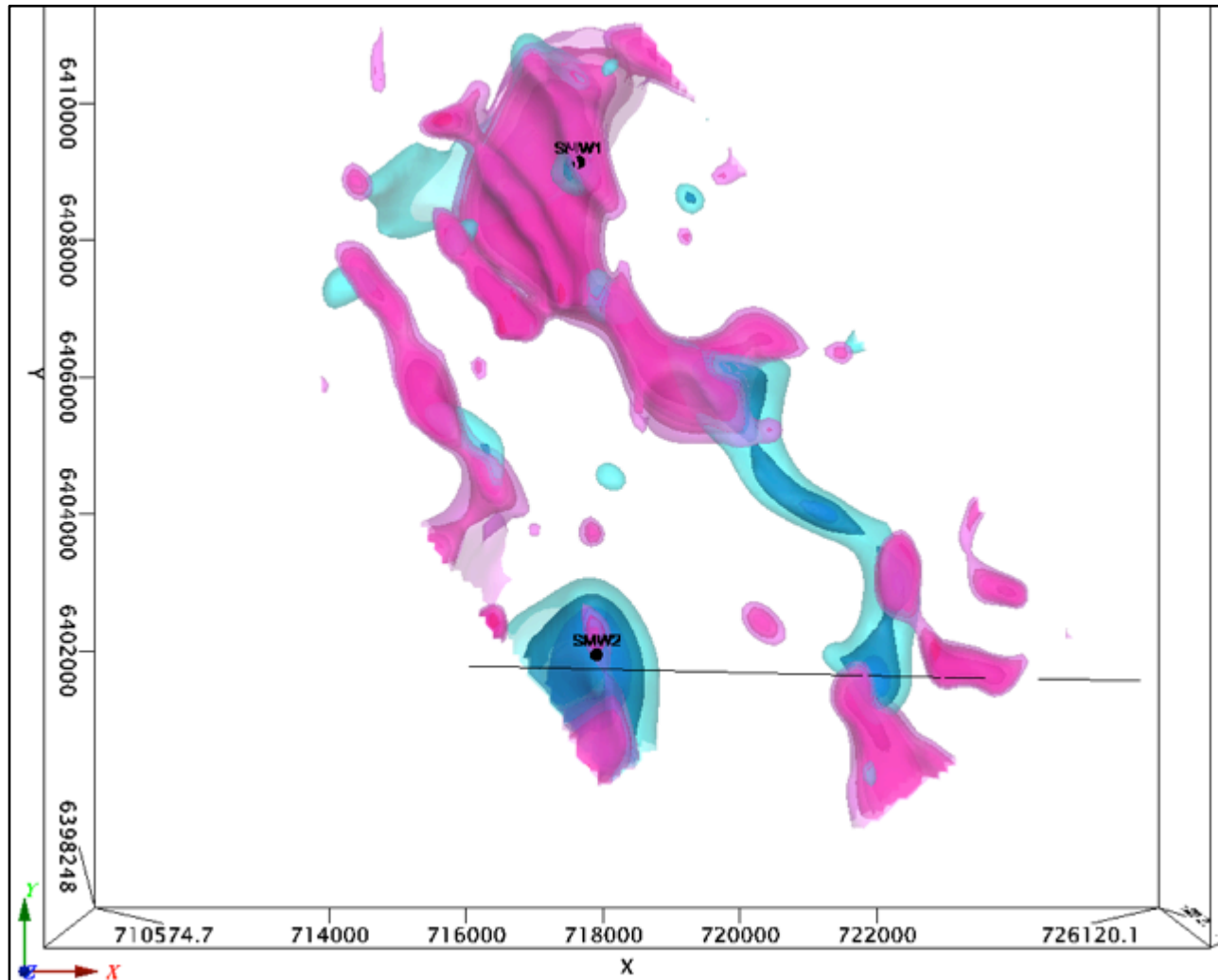
Figure width ~33km

Six Mile Hill Project - Western Targets



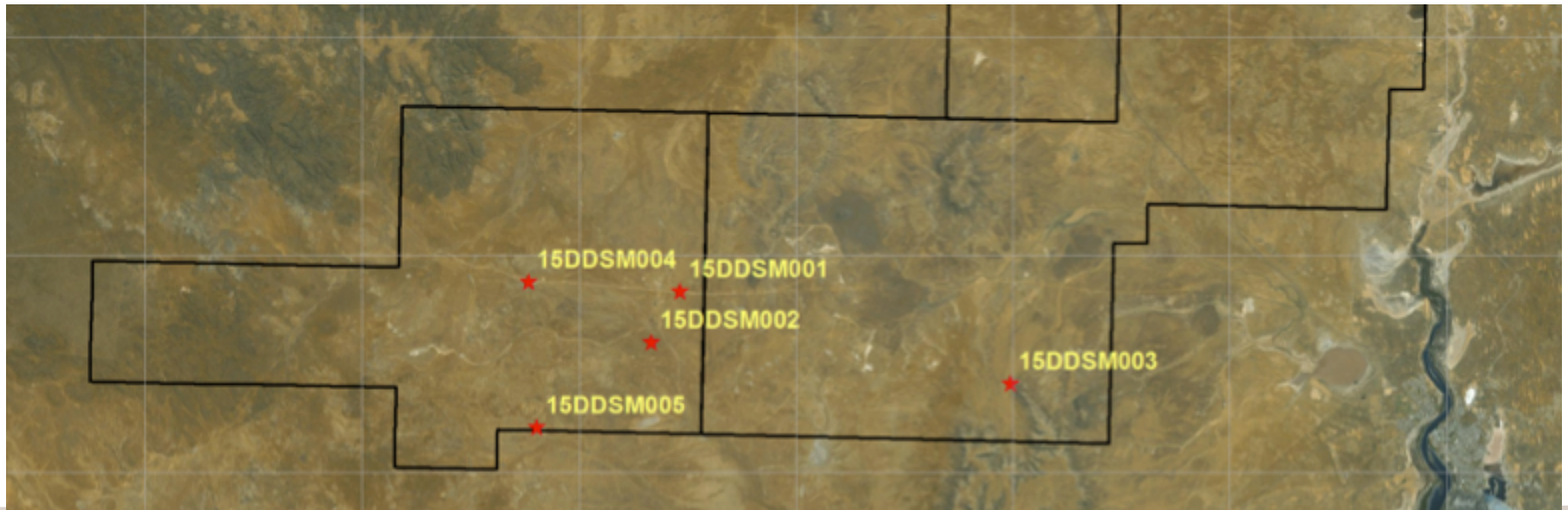
Residual detailed Bouguer gravity (2.67g/cc) for the Six Mile West area with preliminary 100m x 100m x 50m gravity model on the right. Gravity (blue) – Isosurfaces of density, +0.075g/cc light blue outer shell, +0.15g/cc in dark blue inner. Main Target areas shown in red, and black line showing tenement boundary.

Six Mile Hill Project – Six Mile Hill West



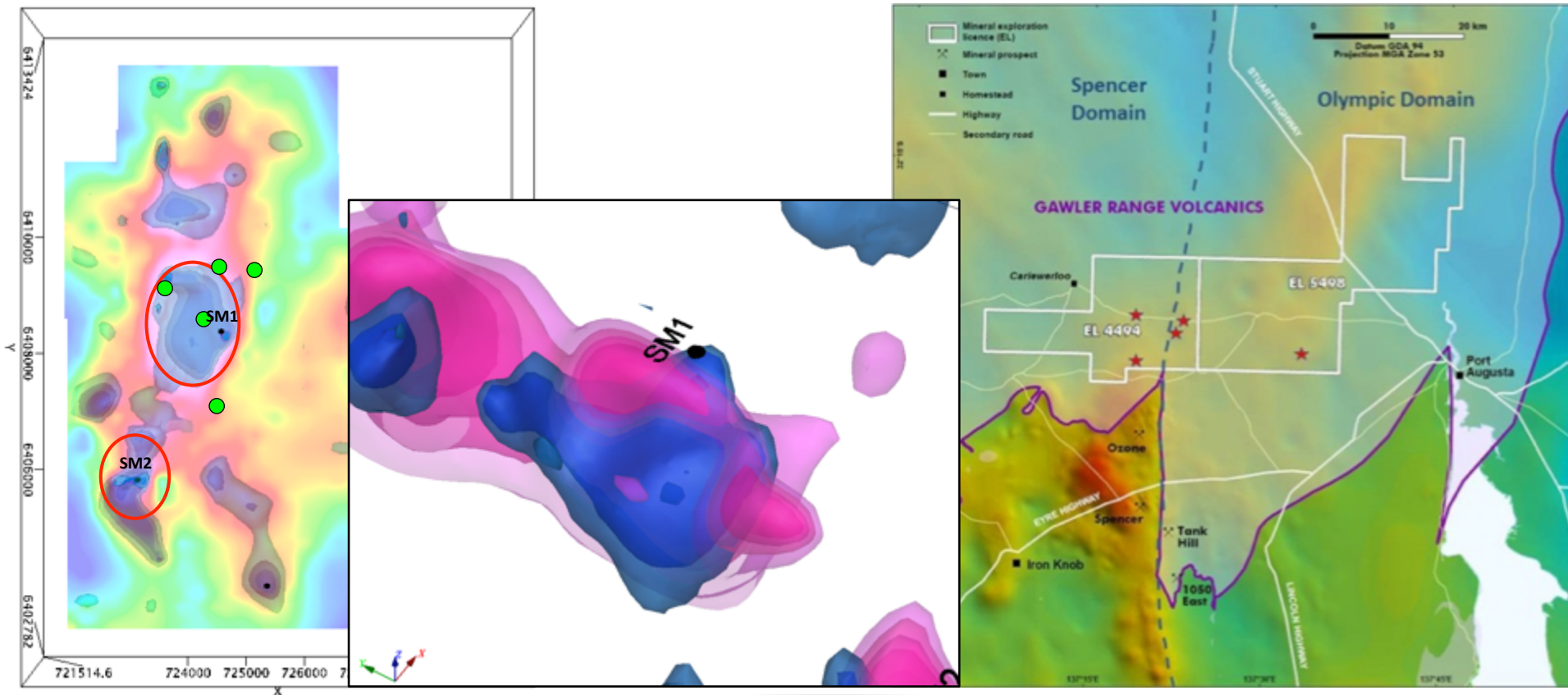
Six Mile Hill Project – Drill Targets

Drill Hole	Depth to Iso-surface Density			Rank	Planned Depth
	0.05 g/cc	0.1 g/cc	0.15 g/cc		
15DDSM001	119	171	216	1	450
15DDSM002	71	112	141	2	350
15DDSM003	167	202	237	3	350
15DDSM004	310	452	n/a	4	350
15DDSM005	511	695	850	5	450



Conclusion

- Mineral Systems Drilling Program will improve understanding of mineralisation associated with the 1590 Ma thermal event
- **Drilling at Six Mile Hill to commence in June 2015**



Competent Person Statement

The information in this presentation that relates to results of geophysical exploration is based upon information compiled by Mr Barry Bourne, who is employed as a Consultant to the Company through geophysical consultancy Terra Resources Pty Ltd. Mr Bourne is a fellow of the Australian Institute of Geoscientists and a member of the Australian Society of Exploration Geophysicists. He has proper and relevant experience with the styles of mineralisation as well as the kinds of mineral deposits under consideration and activities undertaken. This is sufficient to qualify him as a “Competent Person” as defined in the 2012 Edition of the Joint Ore Reserves Committee (JORC) Australasian Code for Reporting of Exploration Results, Mineral Resources and Ore Reserves. Mr Bourne consents to the inclusion in the presentation of matters based on information in the form and context in which it appears.

JORC Code 2012 Reporting

The most recent JORC Code 2012 edition exploration results reporting on the information contained within this ASX Announcement can be reviewed in the “KSN Exploration Update – October 2014” ASX Announcement as released to ASX on 30th October 2014.