



**White Cliff Minerals LTD**

Investor Presentation  
Australian Nickel and Gold  
Central Asian High Grade Gold

April 2015

# Executive Summary

- Merolia Nickel Project
  - Superb **nickel** sulphide targets
  - On basal contact of mafic-ultramafic **intrusion**
  - Strong nickel anomalies at surface (up to **0.14% Ni**)
  - Similar geological setting to the Nova-Bollinger deposit
  - **Drilling** scheduled July-2015
  - **100%** Ownership
- Chanach Copper-Gold Project
  - **Maiden** Gold Resource (JORC)
  - 1.15Mt at **4.2 g/t** for **156,000 Oz**
  - Exposed at **Surface -Visible** gold
  - Extensive **additional** potential
    - Open along strike (3 km)
    - Open at depth (>100m-1000m)
  - Multiple mineralised zones
  - Drilling scheduled Q3-2015
  - **89%** Ownership

**Exceptional Discovery Potential**

**Rapid growth in JORC Resources**

# Corporate Snapshot

## Capital Structure

Shares	560.5M
Options - 3c ex price expiring 30/09/2017	102 M
Convertible Note	\$0.4 M
Cash (30 March 2015)	\$0.6 M
Share Price	\$0.01
Market Cap	\$4.50 M

## Board of Directors

Managing Director	Todd Hibberd
Executive Chairman	Michael Langoulant
Non-exec Director	Rodd Boland

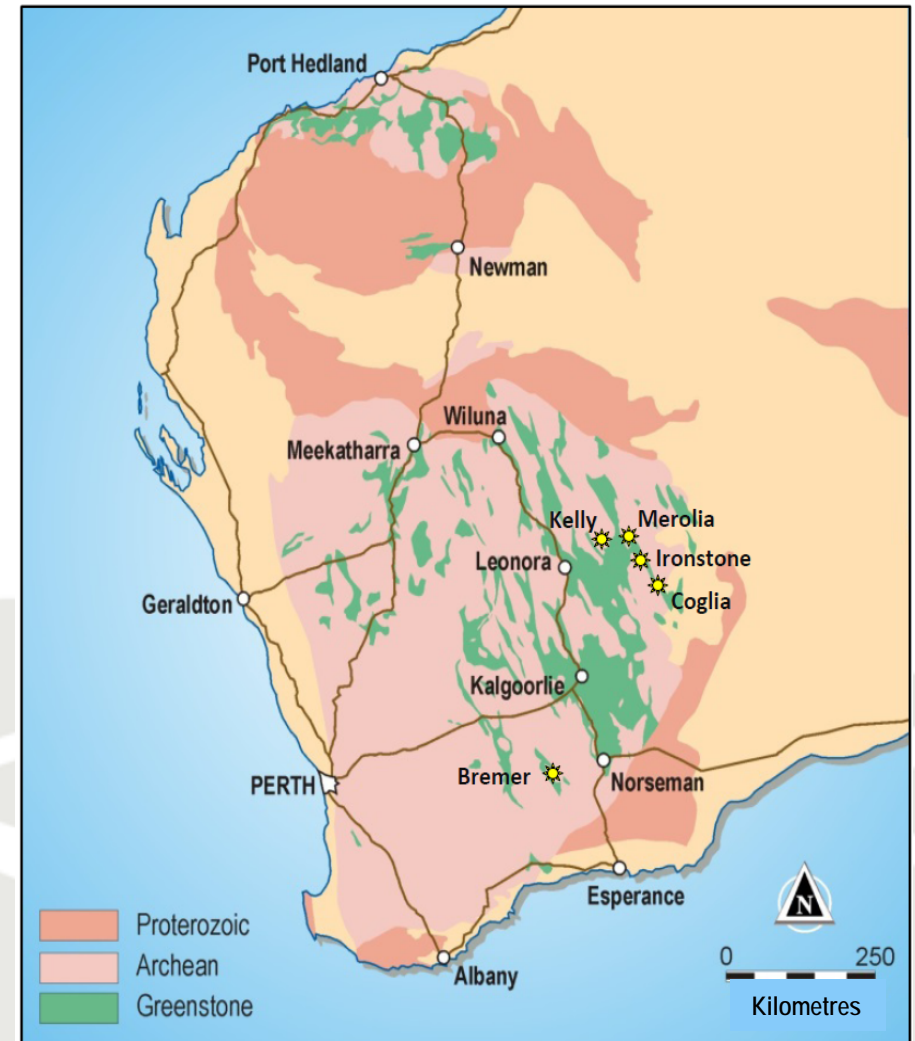
## Major Shareholders

ADE Superfund	28.75%
Mark Tkocz	6.11%
Directors and Founders	7.80%
Hebei Mining (Australia) Pty Ltd	2.95%
Top 20	54.6%
Top 50	67.5%

- *Experienced team*
- *Tight capital structure*
- *Highly leveraged to exploration success*

# Australian – Nickel, Copper and Gold

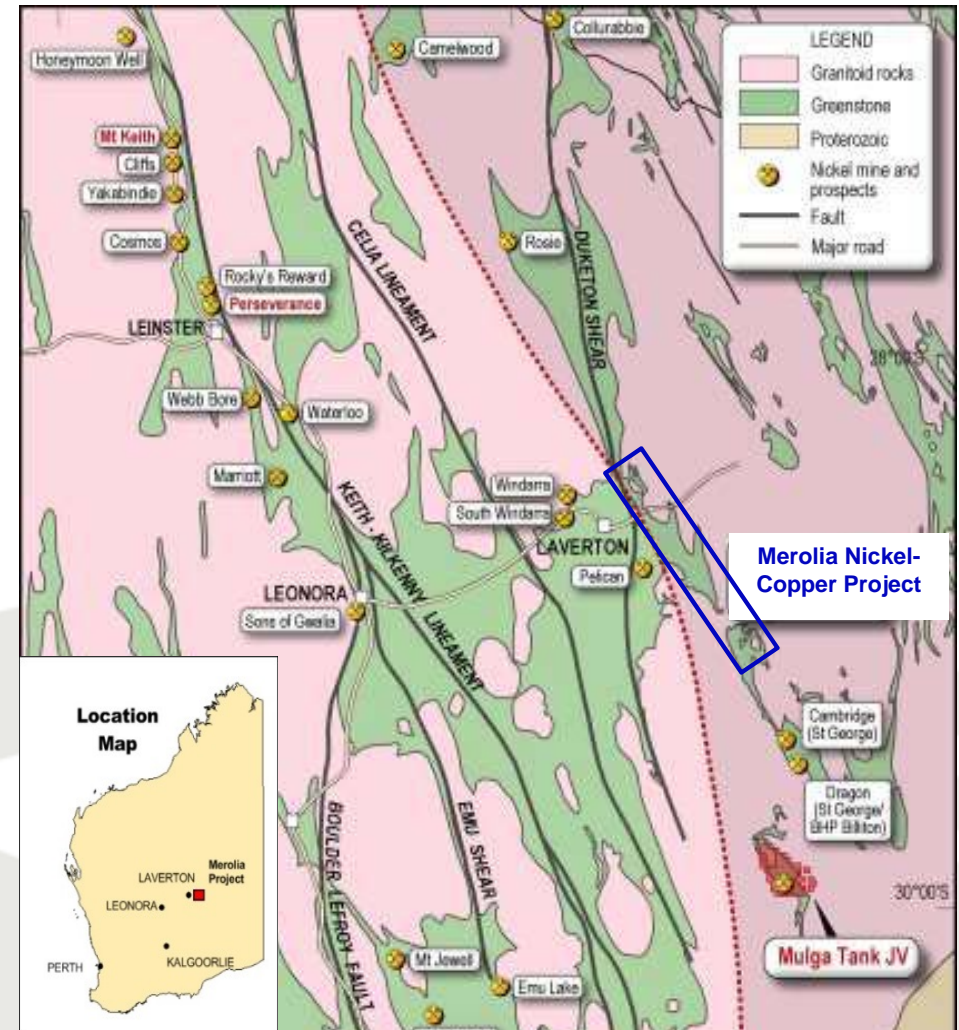
- Merolia - Coglia
  - Targeting mafic-ultramafic intrusion style nickel and copper sulphide systems (Nova-Bollinger )
  - EM surveys ongoing
  - Drilling scheduled Q3 2015
- Bremer Range
  - Basal contact of Intrusive ultramafic
  - Two nickel mines along strike
- Ironstone Gold
  - High Grade (24m at 8 g/t gold)
  - Drilling scheduled Q4-2015





# Merolia Nickel-Copper Project (100%)

- Emerging nickel province with recent discoveries at:
  - Nova-Bollinger (0.5 Mt Ni Eq.)
  - Camelwood (Ni)
  - Collurabie (Ni-Cu-PGE)
  - Mulga Tank (Ni-Cu)
- Extensive Infrastructure
  - Local nickel and gold processing facilities
- In a world class region:
  - Mt Keith >2 Mt Ni metal
  - Perseverance >1 Mt Ni metal
  - Kambalda >1 Mt Ni metal

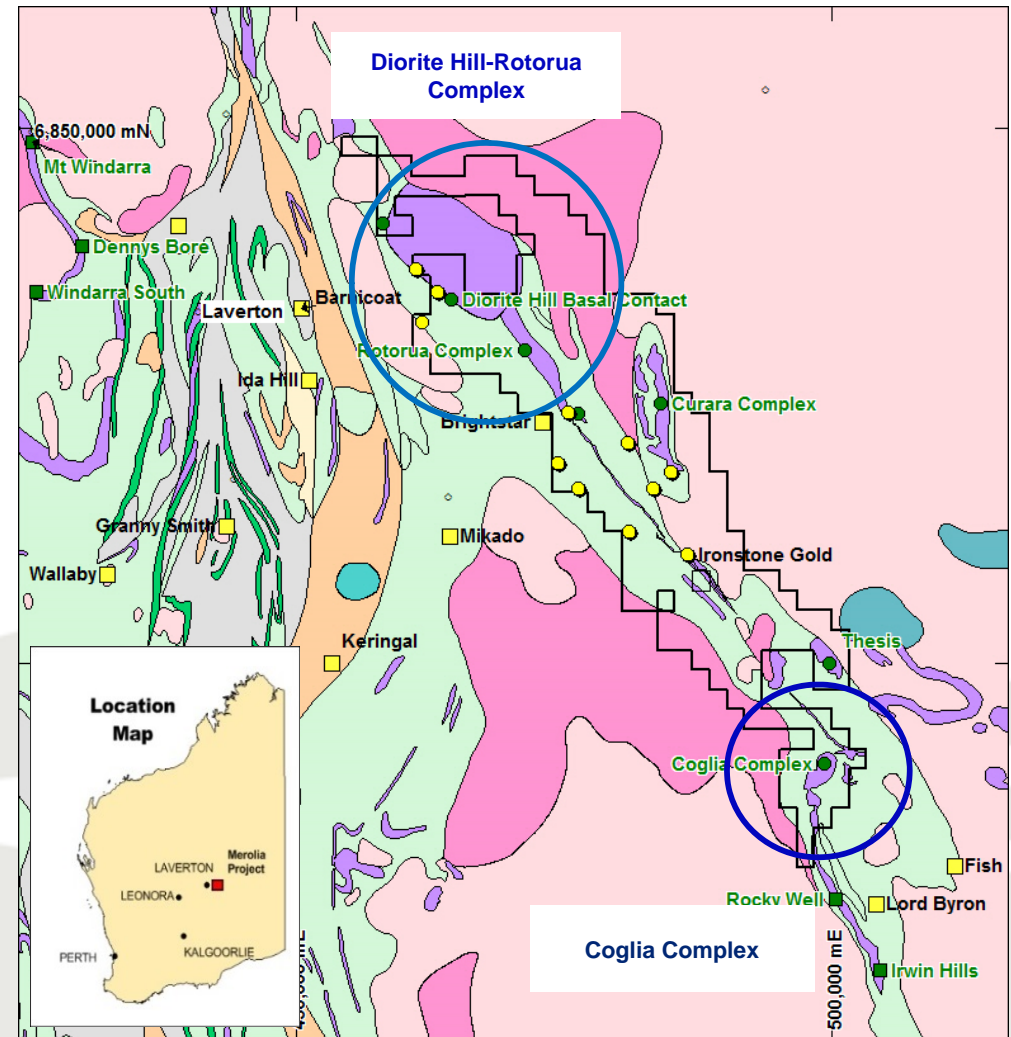


# Merolia Ultramafic Complex



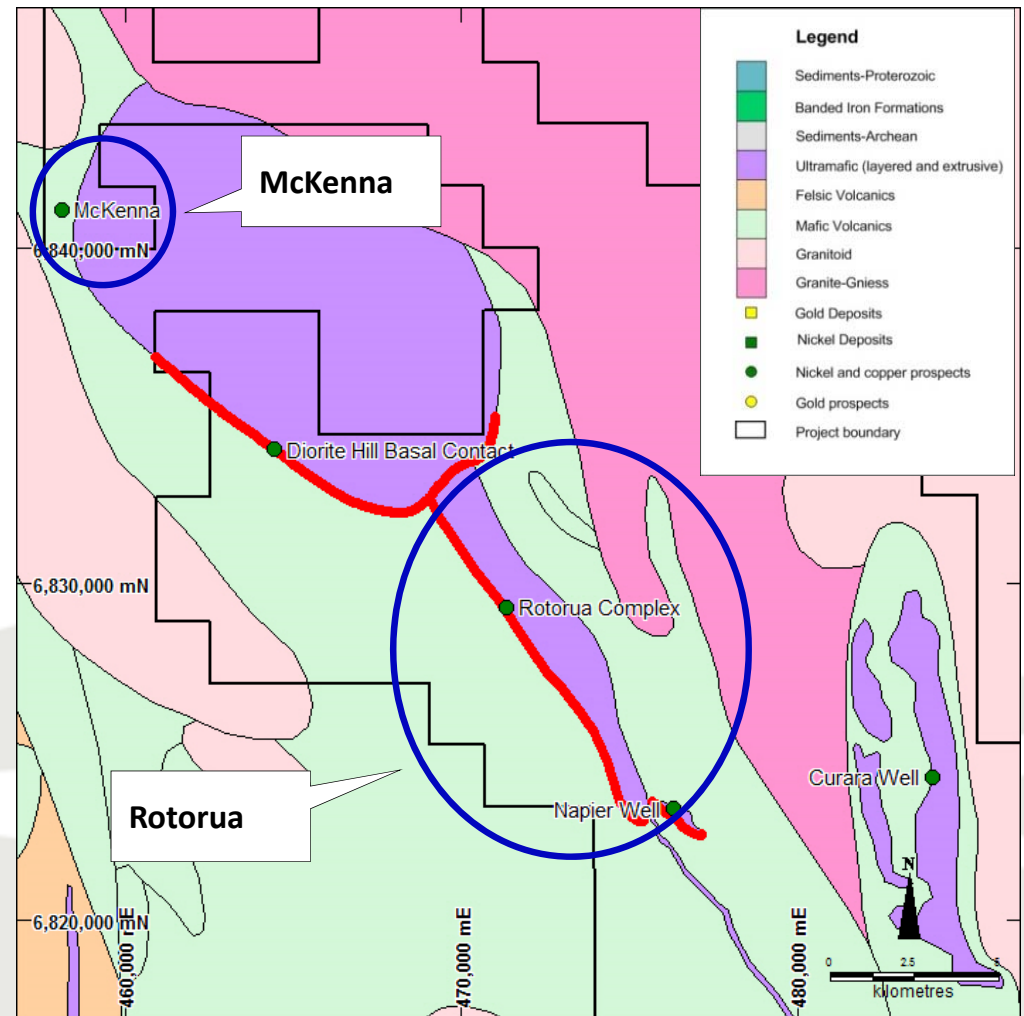
White Cliff Minerals LTD

- Multiple intrusive mafic-ultramafic complexes
- Key Prospects:
  - Diorite Hill Intrusive contact
  - McKenna
  - Rotorua complex
  - Coglia complex
- Multiple nickel-copper and platinum targets
- Large landholding
  - 771 km<sup>2</sup> covering 80 km long belt of intrusive ultramafic rock



# Diorite Hill and Rotorua Complex

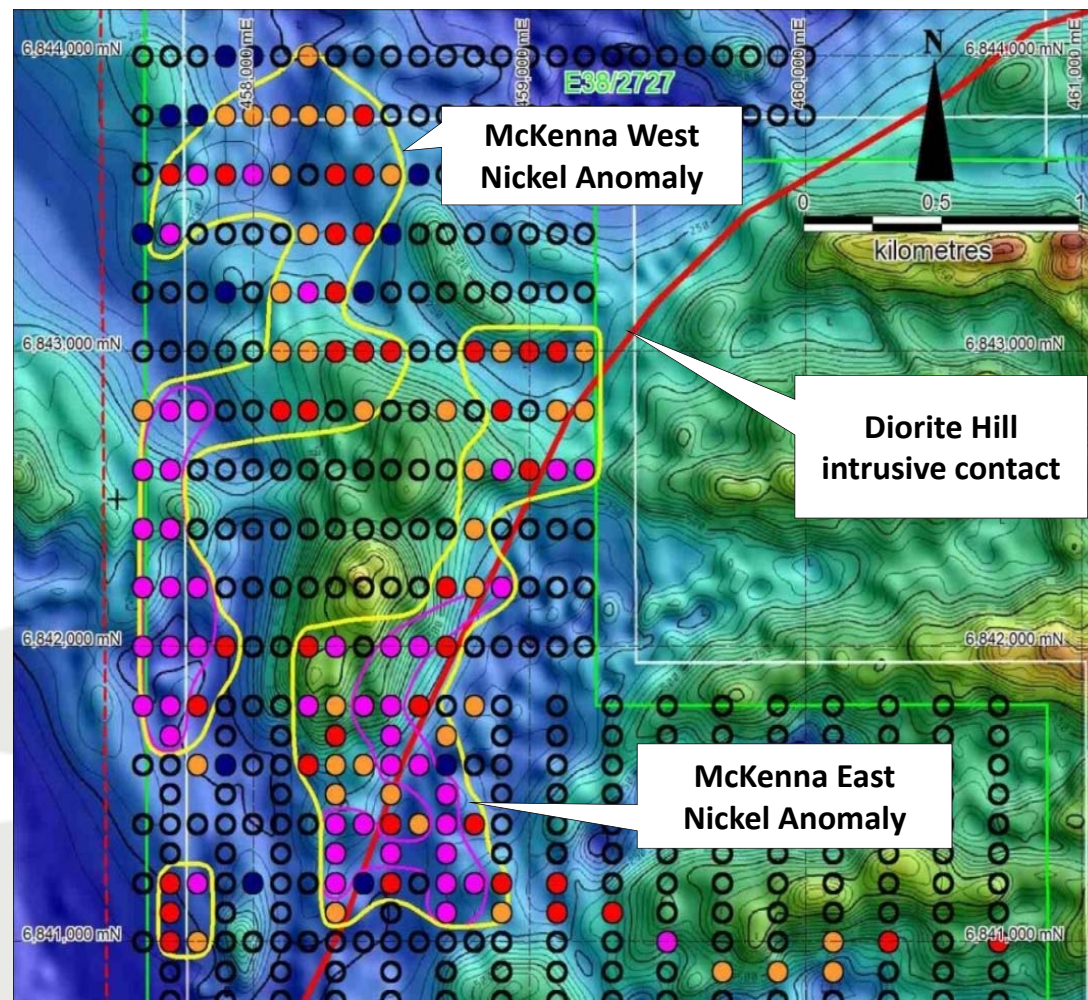
- Targeting Nova-Bollinger mafic intrusive style nickel-copper sulphide systems
  - Basal contact of layered mafic-ultramafic intrusion with;
  - Anomalous Ni-Cu soils and;
  - EM Conductors and;
  - Not drill tested
- Exploration underway
  - EM surveys (ongoing)
  - Soil geochemistry
  - Drilling scheduled (Q3-15)





# McKenna Prospect

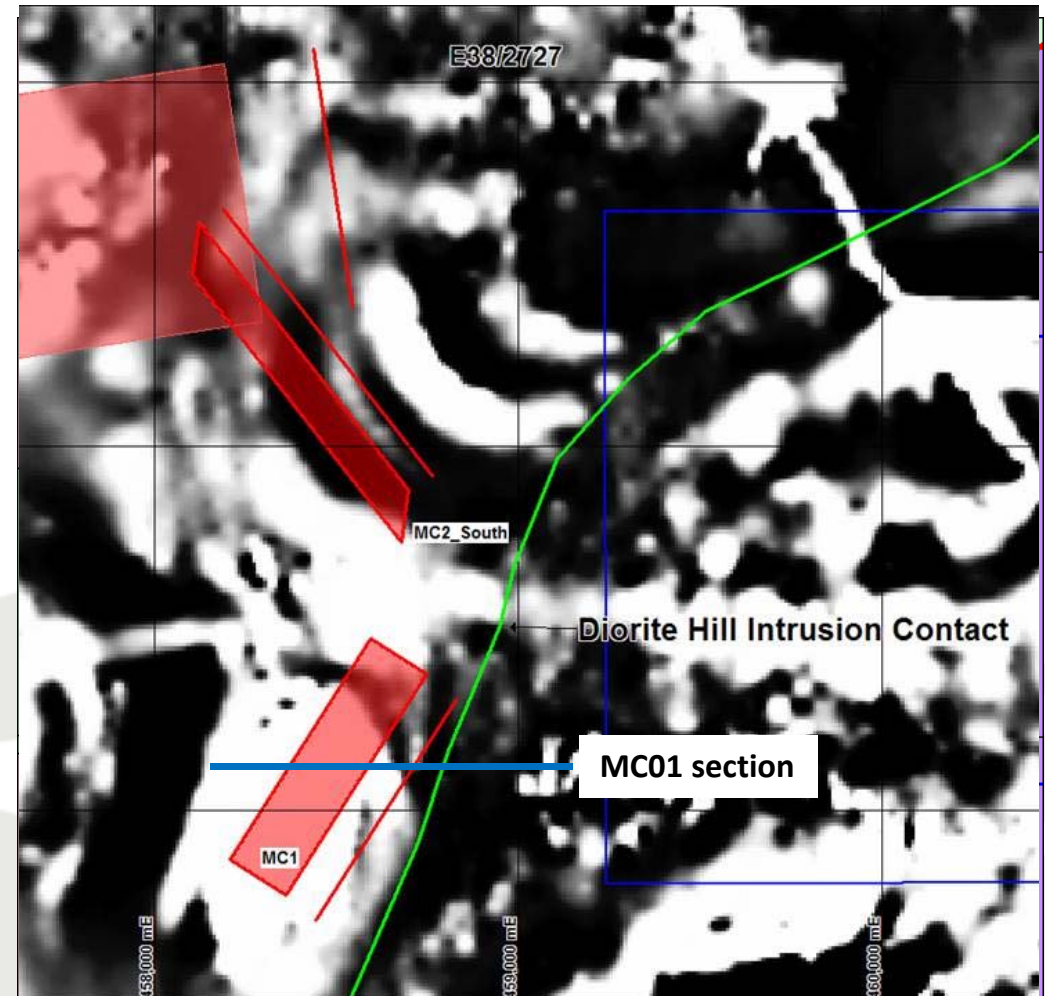
- Basal contact of mafic-ultramafic intrusion (red line)
- Strong nickel anomalies
  - 1000m long
  - Soil results up to 0.14% nickel
  - On mafic-ultramafic contact
- Current activity
  - Detailed Magnetics
  - Geophysics EM (ongoing)
  - Drilling scheduled June 2015





# McKenna Nickel Sulphide Targets

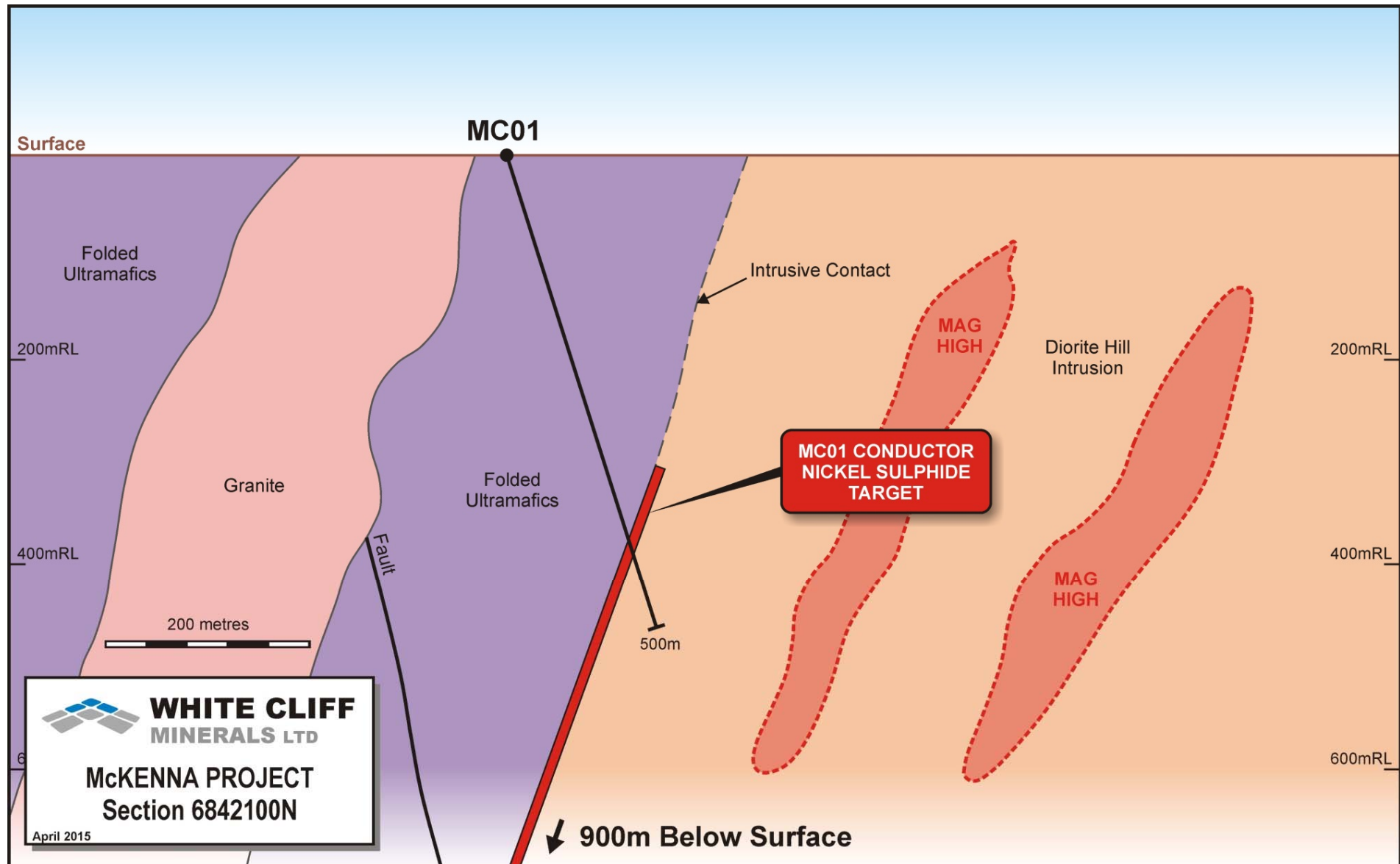
- EM survey identifies three conductive targets (Newexco)
  - MC01 on basal contact of mafic-ultramafic intrusion
  - MC02S and MC02N within feeder conduit on basal contact
  - Conductance: 500 to 1100 Siemens
  - Depth: 170-300 below surface
  - Dip: 40-80 degrees to the west
- 1500 metres of diamond drilling scheduled July 2015



# McKenna MC01 Cross Section

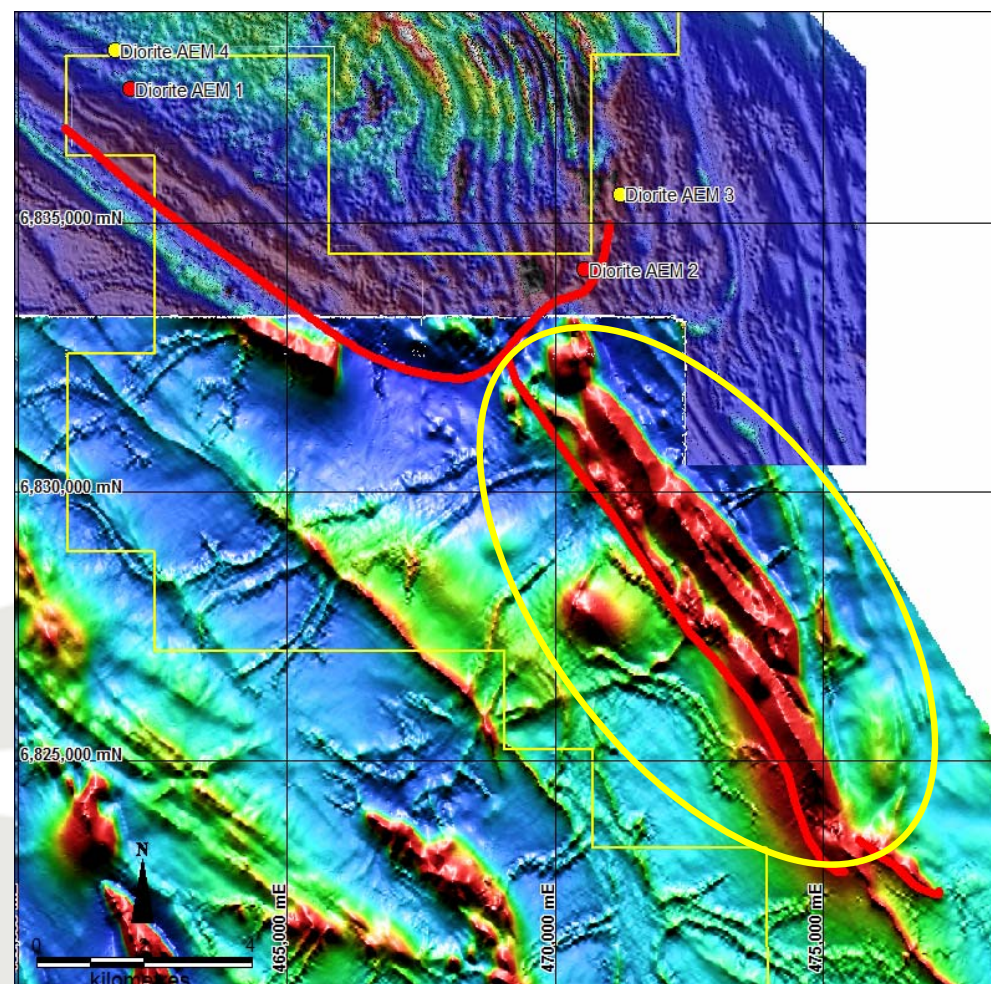


White Cliff Minerals LTD



# Rotorua Prospect

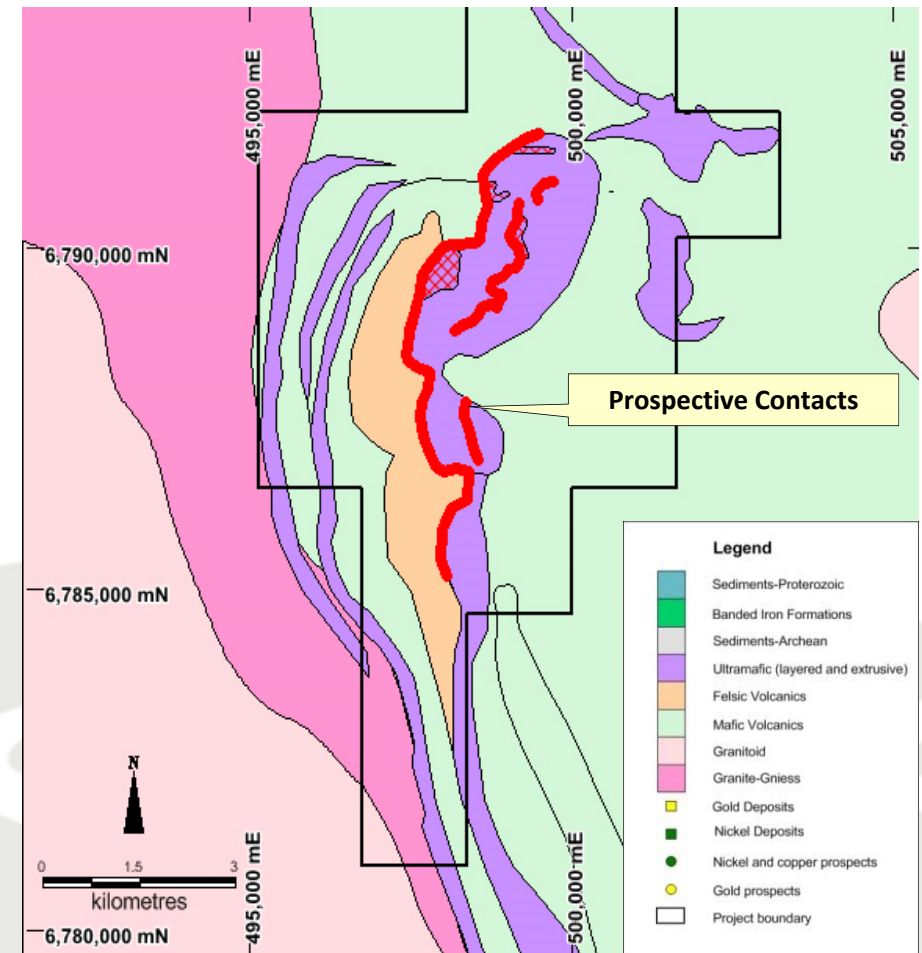
- Extensive basal ultramafic contact (red line)
  - 23km strike
  - Virtually no previous work over the ultramafic (aeolian sand cover)
- Current activity
  - EM Survey scheduled for Q3 2015
  - Drilling scheduled (Q4-2015)
  - 5,000m RAB to test below cover (yellow ellipse)





# Coglia Nickel-Copper Prospect

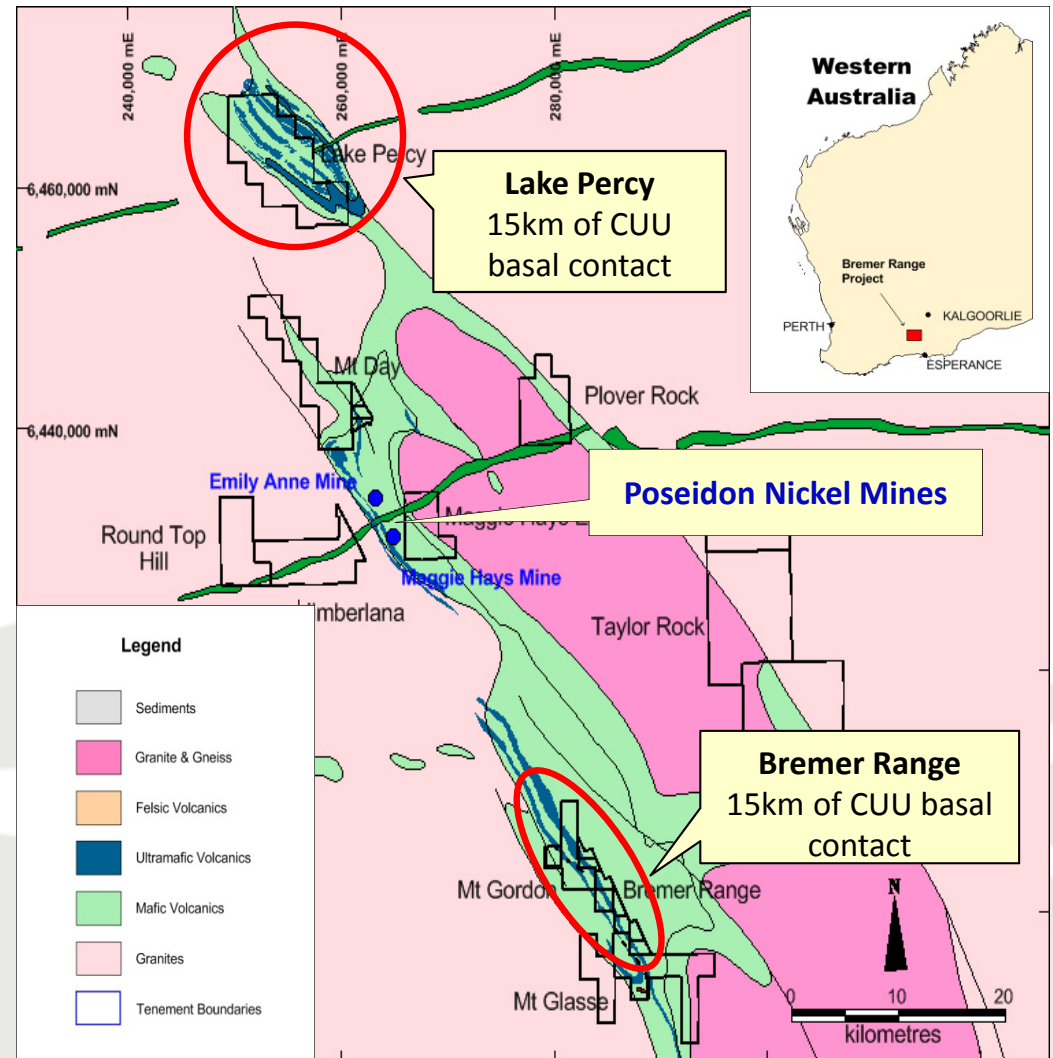
- Large ultramafic unit
  - 7km by 1.5km
  - Existing drilling includes:
    - 4m at 0.84% nickel, 246ppb Platinum, 50ppb Palladium and 423ppm Copper
    - Basal contacts not drilled
  - Untested at depth
  - Multiple targets
- Planned exploration
  - Geophysics (ongoing)
  - EM results - April
  - RC drilling (2000m) scheduled Q3-15





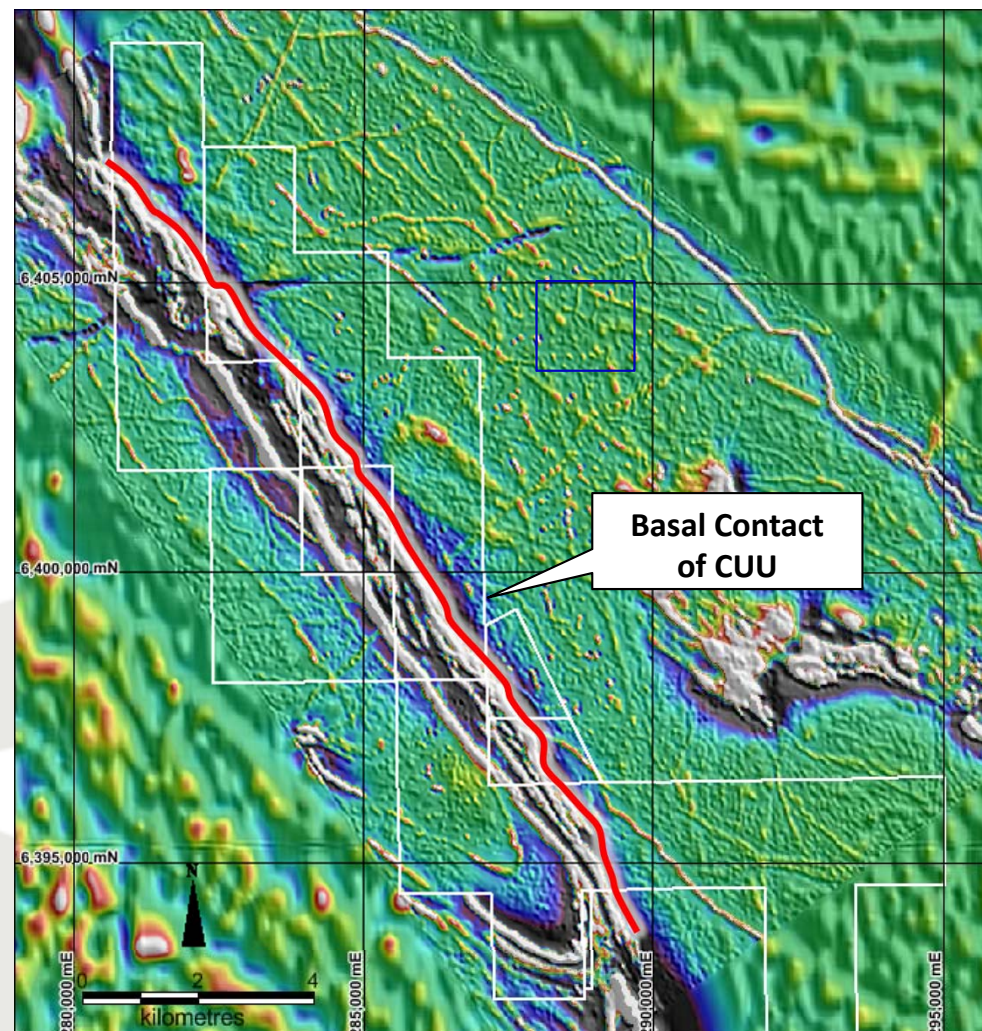
# Bremer Range Nickel Project (100%)

- Bremer Range Region:
  - Existing nickel mines
    - Maggie Hays/Emily Anne
    - 14Mt@ 1.82% Ni (pre-mining)
  - New nickel discovery 2015
    - North shoot
  - All on basal ultramafic contact
  - Local mine and Infrastructure
  - 250km to Esperance Port
- WCN Bremer Range Project
- Multiple Prospects
  - Bremer Range
  - Lake Percy
- 30 km of basal contact



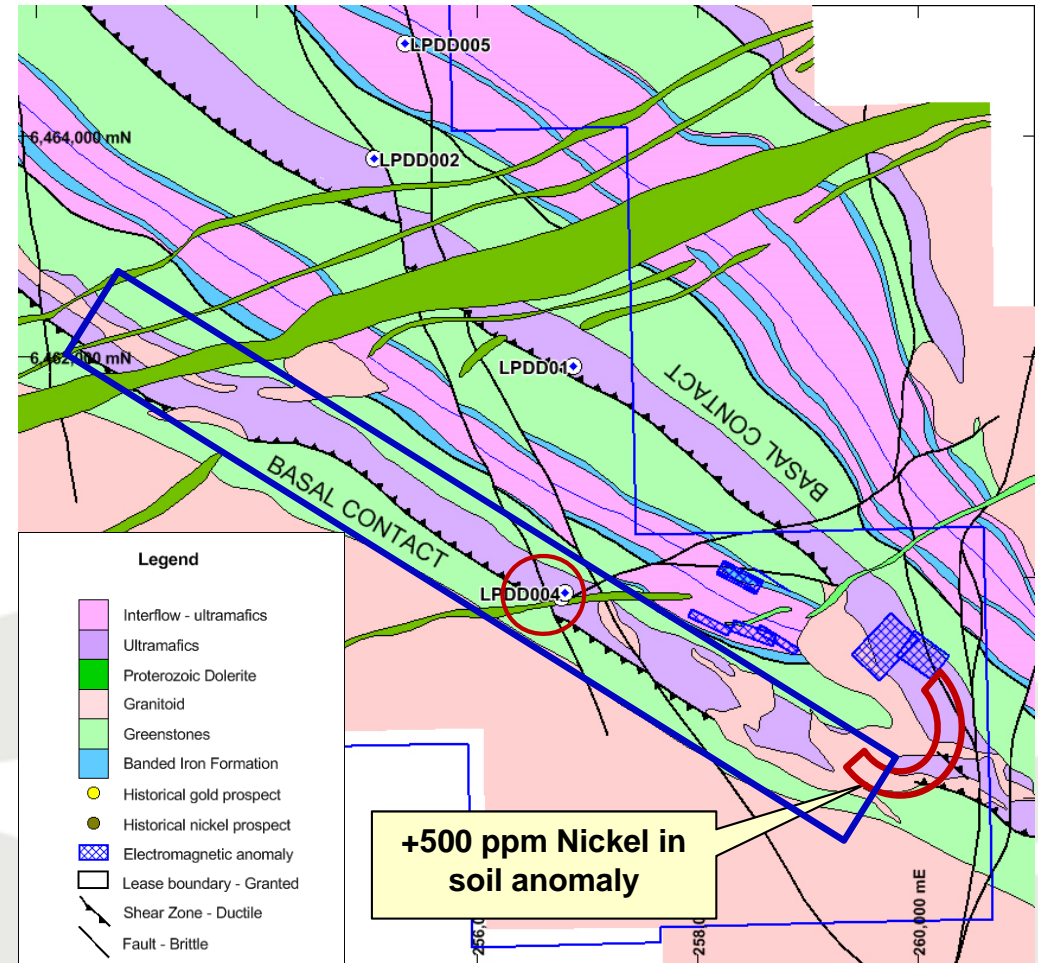
# Bremer Range Prospect

- Same ultramafic basal contact as Maggie Hays/Emily Anne
  - 25 km south
  - 15km long section to explore
- Strong Soil Anomalies
  - Nickel +400 to 800 ppm
  - Copper +80 ppm
- Current Activity
  - Planning EM Geophysics (Newexco)
  - Soil Geochemistry



# Lake Percy Prospect

- 30km north of Maggie Hays & Emily Anne mines
- Same ultramafic basal contact
  - 20km long section to explore
- Historical drill results:
  - 6m @ 1.7% Ni
- Recent drill results:
  - **32m at 0.83% Ni** and 226ppm Cu
  - Very low Chrome (242ppm)
- Current Activity
  - Soil geochemistry (blue box)
  - Geophysics Review (Newexco)





# Chanach Gold and Copper Project (89%)

- **Aucu Deposit:** Maiden JORC compliant gold resource
  - 1.15Mt at **4.2 g/t gold** for **156,000 Oz**
- Multiple zones of high grade gold mineralisation from surface including:
  - 19 metres at 6 g/t gold from 71 metres
  - 6 metres at 13.1 g/t gold from 50 metres
  - 4 metres at 23.8 g/t gold from 85 metres
  - 2 metres at 22 g/t gold from 102 metres
- **Chanach Deposit:** Maiden JORC compliant copper resource
  - **10Mt** at 0.41% copper containing **40,000 tonnes** of copper
- Drilling scheduled - July 2015 to double resources

**Aucu: A high grade discovery with rapid growth potential!**



# Location-Access-Infrastructure-Support

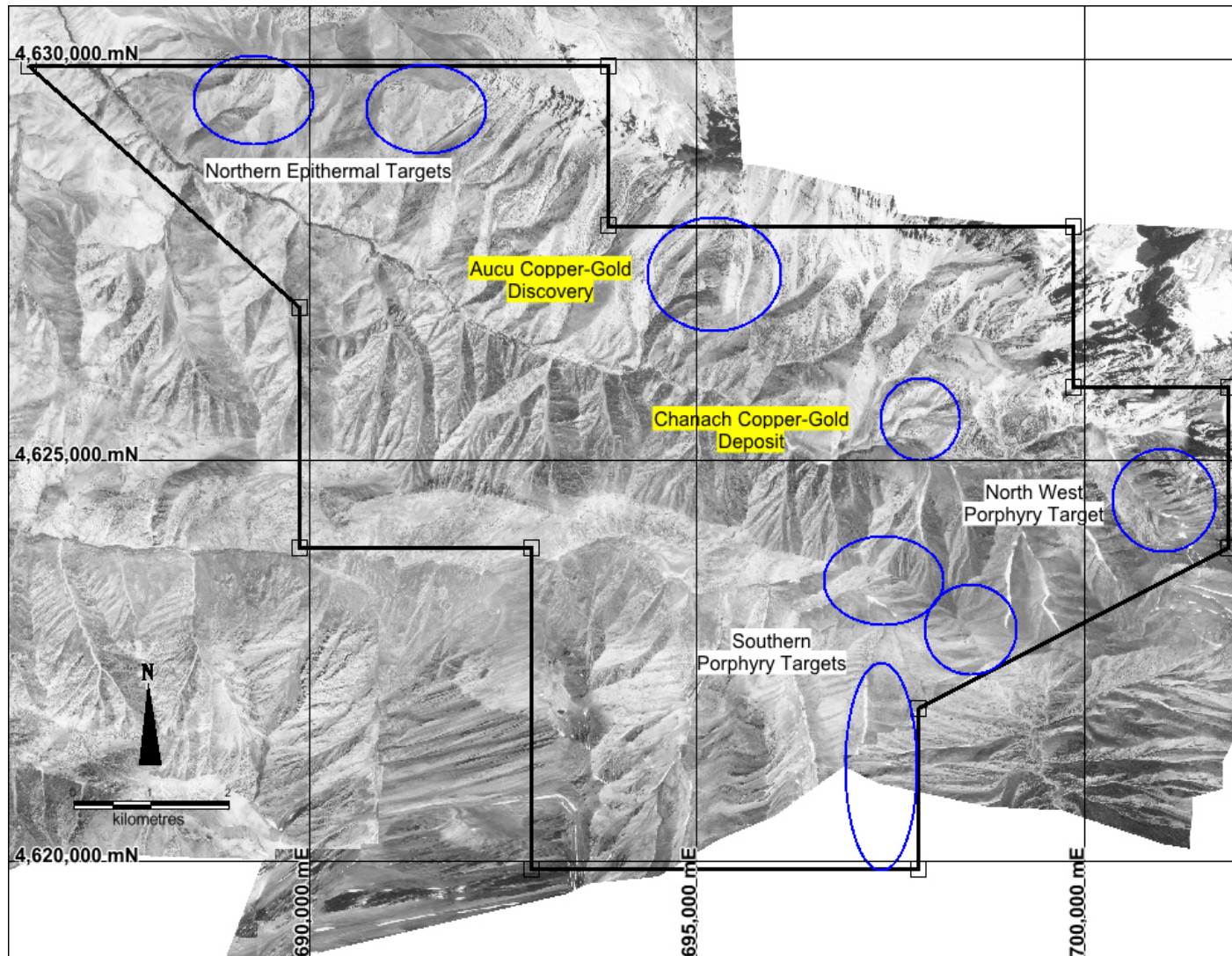


White Cliff Minerals LTD

- North-western Kyrgyz Republic
- Good infrastructure
  - Excellent access roads
  - Within 200 km of Rail
  - Close to regional mining support hubs
  - 175km to Taraz, 200km to Namagan
- Near operating mines
  - Terek Sai (Au)
  - Bozymchak (Cu-Au-Ag)
  - Ishtamberdy (Au)
- Strong Government Support
  - Committed to developing new mines



# Chanach Copper-Gold Project



## Project Tenure

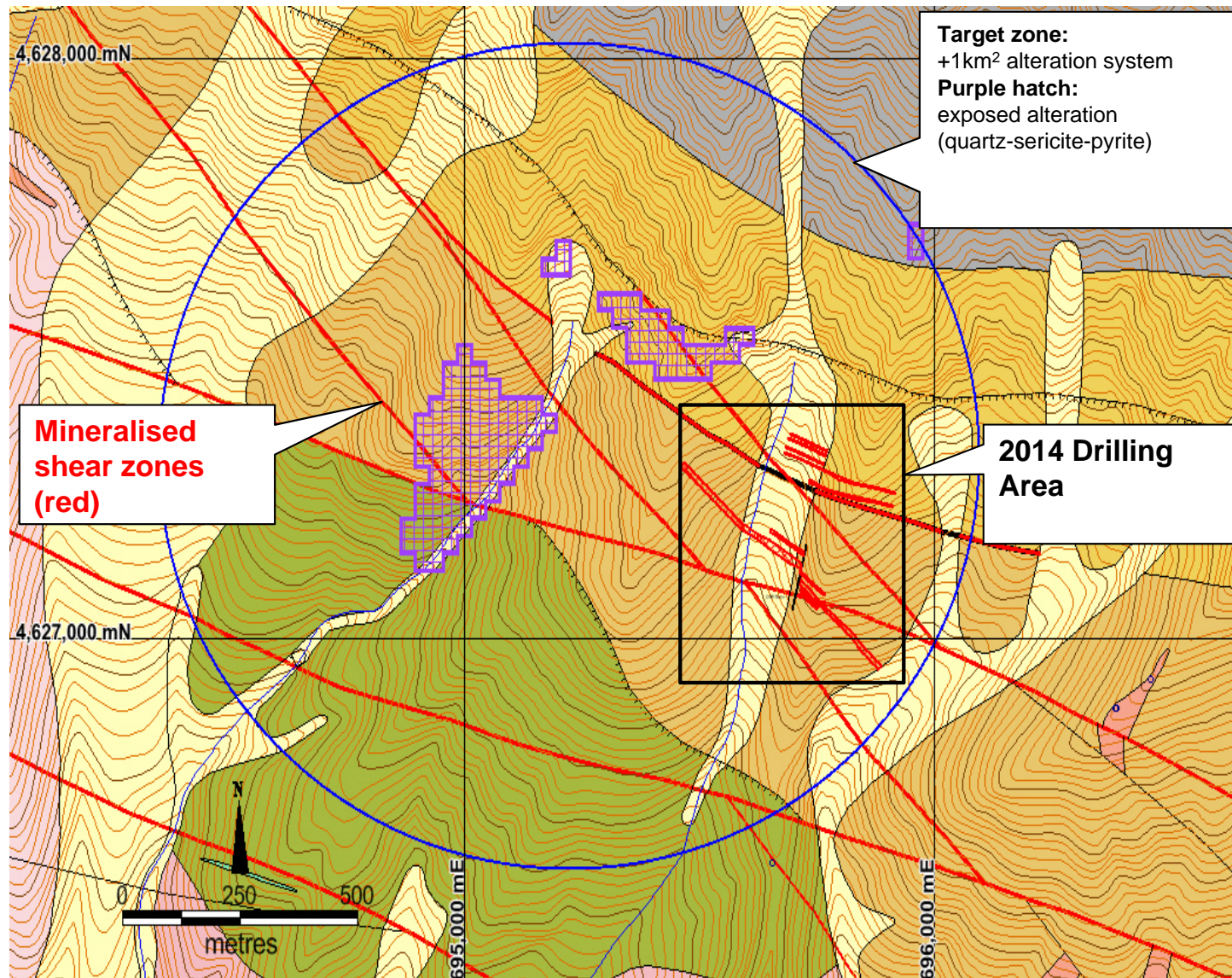
- 83 km<sup>2</sup> permit
  - Valid to Dec 2015
  - Plus 2 x two year extensions
  - Can convert to mining permit (25 years)
- 
- Elevation 2200m to 4100m
  - Multiple porphyry and quartz vein targets



# Aucu Copper Gold Discovery



White Cliff Minerals LTD



## Mineralised Area

- 2+ km long, 1.5km high
- **Many mineralised zones**
- Very high grade + visible gold = **BIG** potential

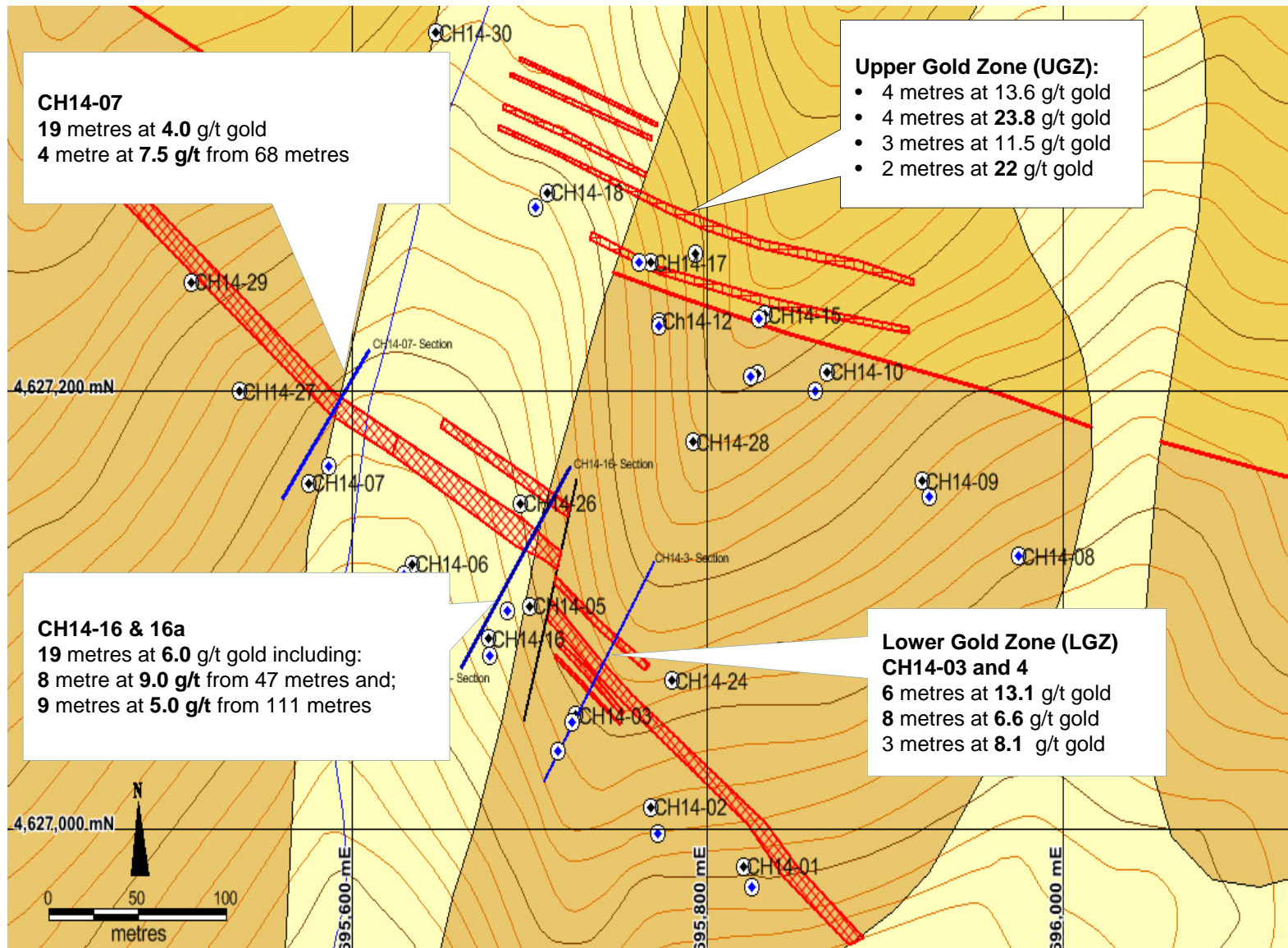
### Geology Legend

cQ4-2	Alluvial- talus sediments
gQ3-4	Colluvial - Glacial sediments
dpC3-P1	Diorite
gdC3-P1	Granodiorite
C1dn	Slaty Limestone
C1sr	Dolomites-Limestones
D3dz	Limestones - interlayered
D2-3tl	Sandstones- conglomerates
S1	Conglomerates - polymictic
V(?) -O2f	Carbonaceous Sediments
V(?) -O2k	Sandstones - turbidites
V(?) -O2r	Ultrabasic - peridotites
	Tenement Outline
	Thrust
	Fault
	Track
	Stream
	Mineralised Zones
	2012 Completed Drill Hole
	2010-2011 Completed Drill Holes

# Multiple High Grade Gold Zones



White Cliff Minerals LTD



## We have tested:

- Two areas
- 350 metres long
- 100 metres deep

## We have found:

- Visible gold
- High grades
- 4-30 g/t gold and;
- Great widths

## Inferred resources:

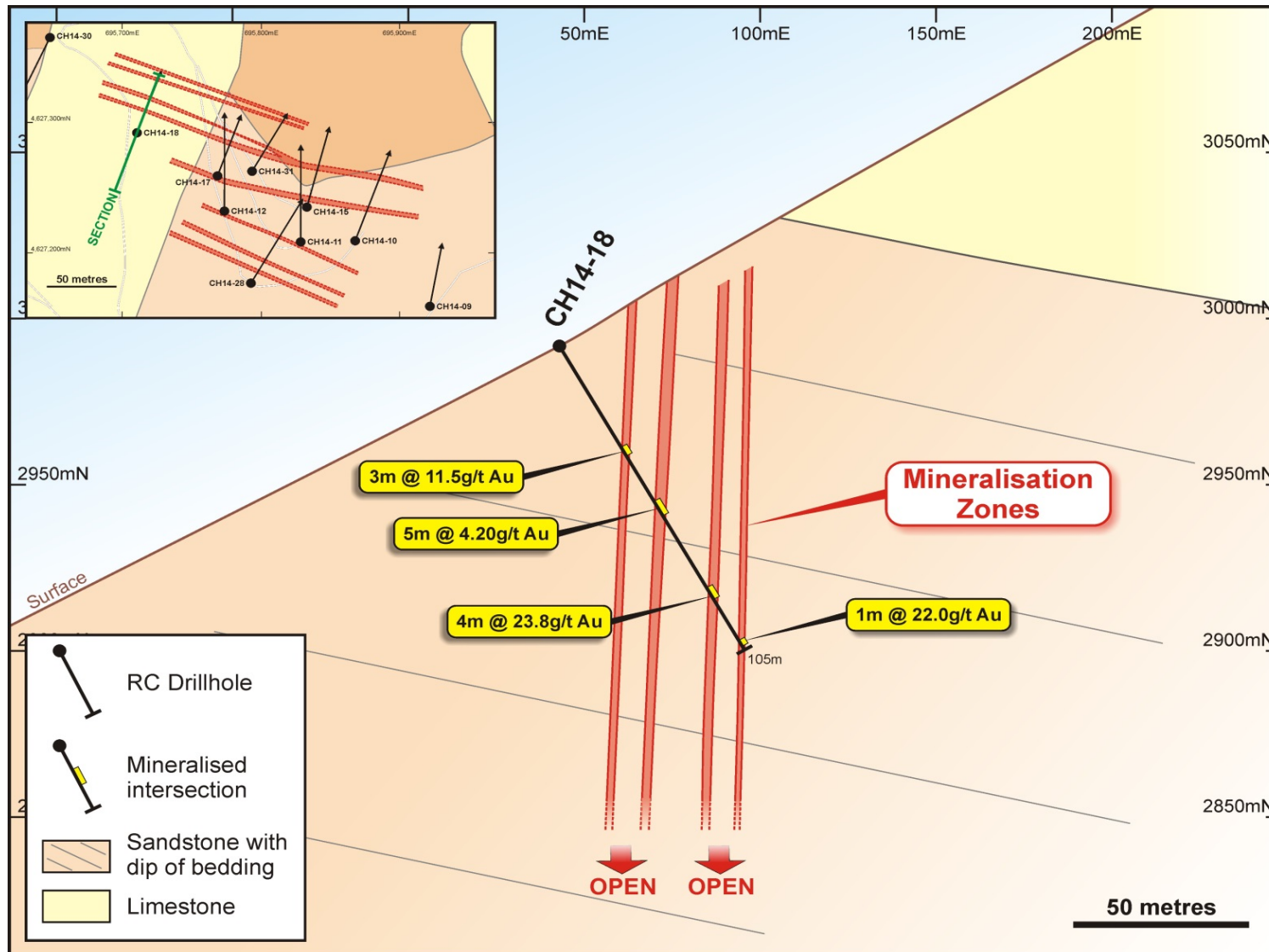
- 1.15 Mt at 4.2 g/t  
containing **156,000 Oz**

## There are:

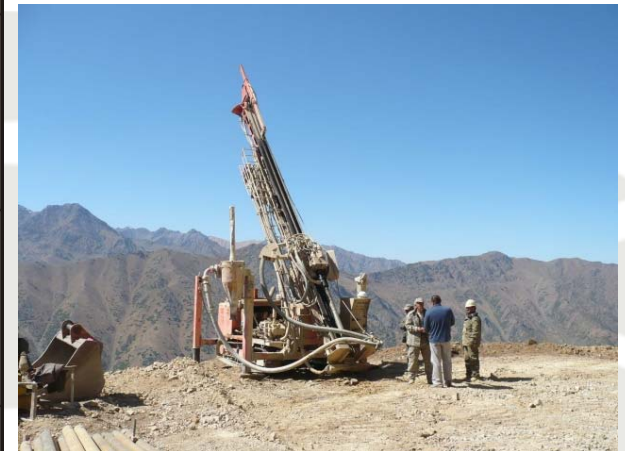
- At least **ten zones**
- +2000 metres long
- Adjacent to porphyries



# Upper Gold Zone CH14-18 Section



Mineralised outcrop

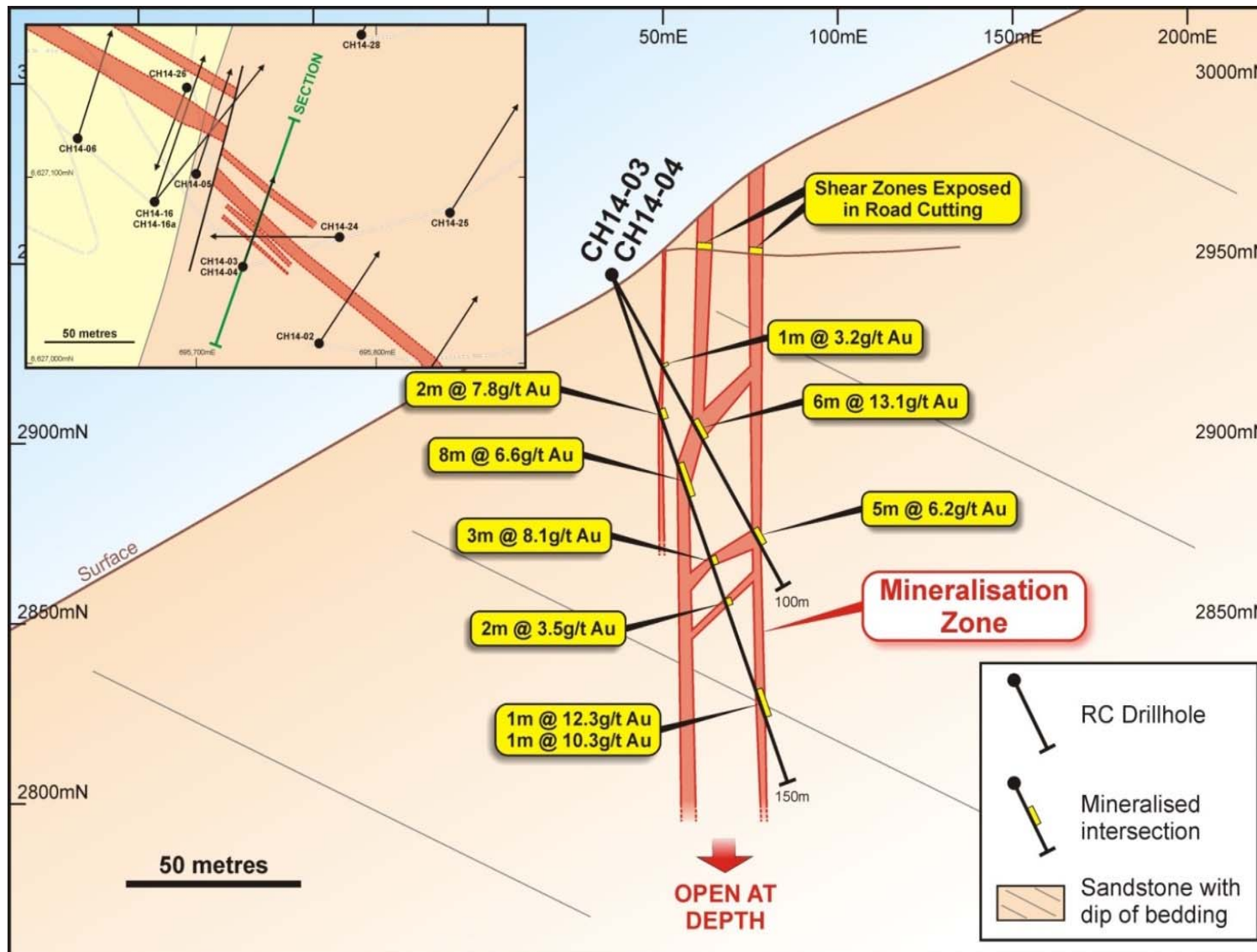


Drill rig at upper gold zone

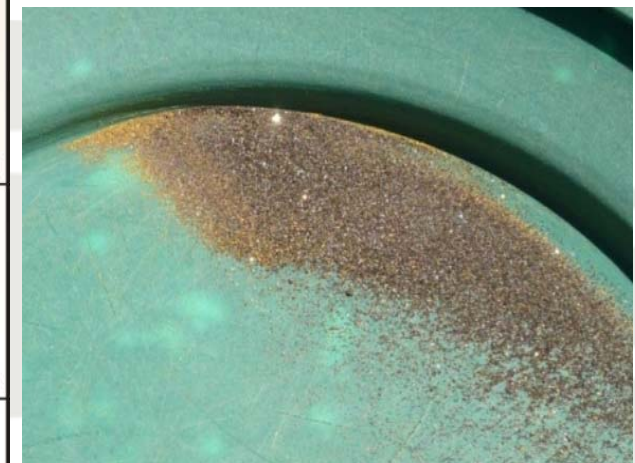
# Lower Gold Zone CH14-03 Section



White Cliff Minerals LTD



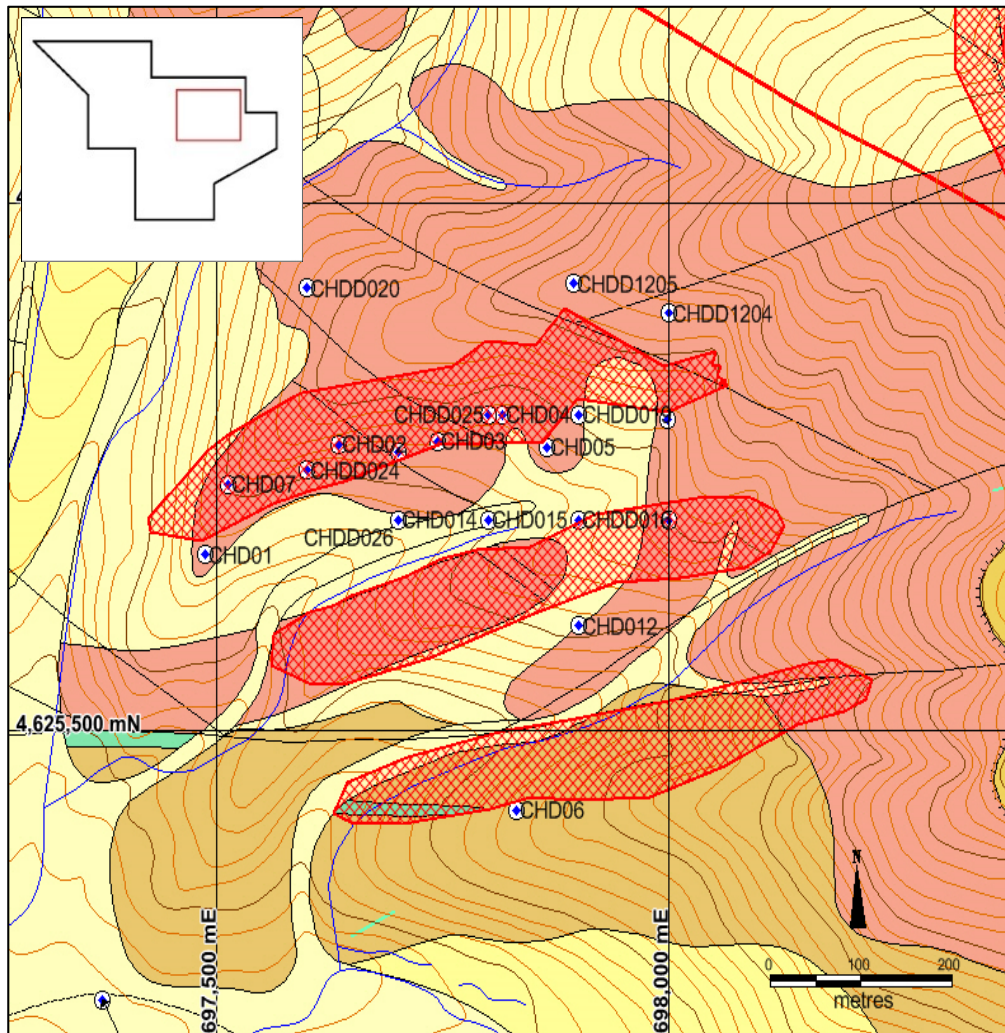
Outcropping ore zone



Visible gold panned from outcrop



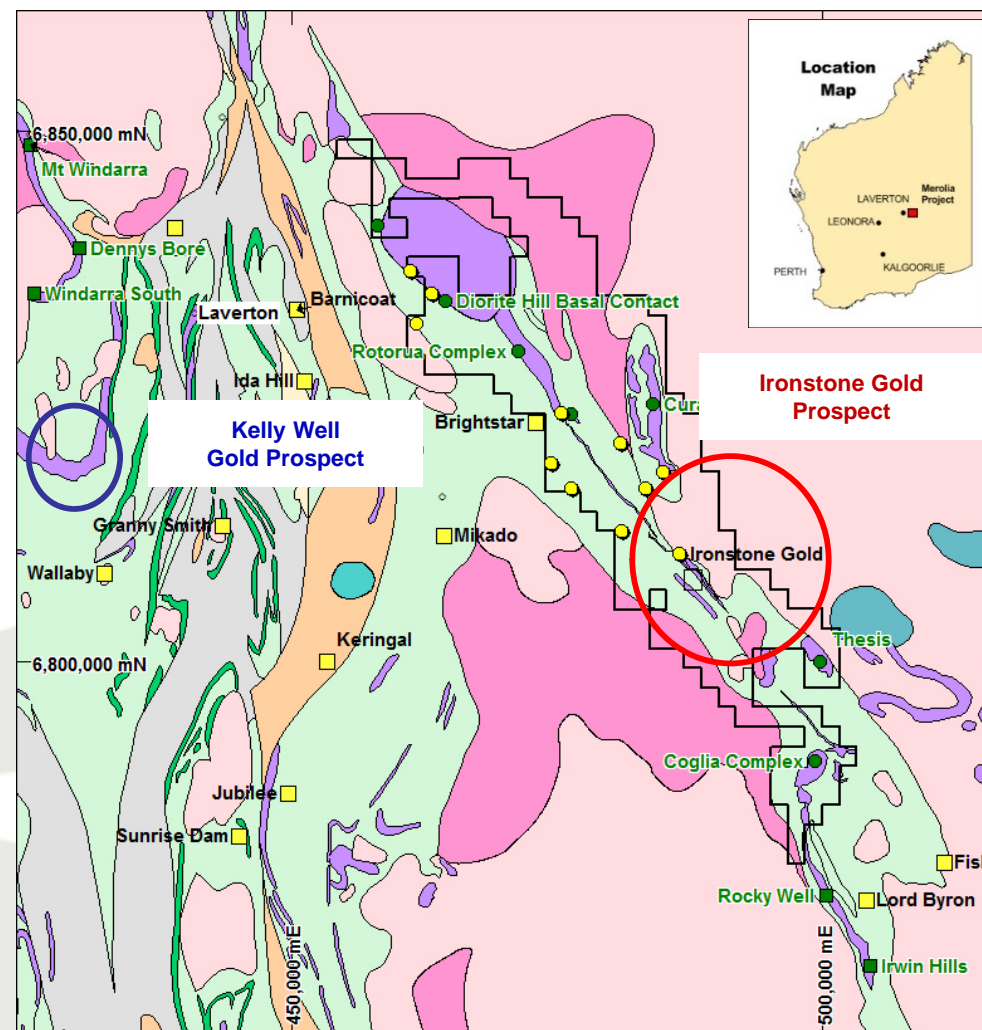
# Chanach Copper Porphyry Deposit



- Large scale porphyry copper
  - Moderate grade - Multiple zones
  - 100-500 metres wide
  - Drill results (from **surface**):
    - 10 metres at 1.01% Cu
    - 14 metres at 0.77% Cu
    - 50 metres at 0.49% Cu
    - 80 metres at 0.50% Cu
- +3km<sup>2</sup> target zone
- Initial Inferred resource (JORC)
  - **10Mt** at 0.41% copper containing **40,000 tonnes** copper
- Drilling scheduled-Aug 2015

# Ironstone/ Kelly Well Gold Prospects

- Northern Goldfields of WA
- Ultramafic/basalt contacts
- Quartz vein systems
- Historical drilling results:
  - 24 metres at 8 g/t gold
  - 8 metres at 4 g/t gold
  - Open in all directions
- 2000 m Drilling
  - Scheduled Q4-2015





# Forward Exploration Schedule

Project	Commodity	Mar 2015	Apr 2015	May 2015	June 2015	Q3 2015	Q4 2015	Q1 2016	Q2 2016
Aucu	Copper-Gold	JORC		MAG		Drilling	Drilling	Assays	JORC
Chanach	Copper		JORC		MAG	Drilling	Drilling	Assays	JORC
Merolia	Nickel-Copper		EM			Drilling	Assays		
Coglia	Nickel-Copper	EM	Soils			Drilling	Assays		
Ironstone	Gold						Drilling	Assays	
Kelly Well	Gold						Drilling		
Bremer	Nickel					Soils	EM		

JORC = Resource estimate, MAG = Magnetic survey, EM = electromagnetic survey, Soils = Soil geochemical survey

This plan represents the Company's current view of planned exploration and is therefore subject to change

# Why Invest?

- Chanach Copper-Gold Project
  - **Maiden** Gold Resource (JORC)
  - 1.15Mt at **4.2 g/t** for **156,000 Oz**
  - Exposed at **Surface -Visible** gold
  - Extensive **additional** potential
    - Open along strike (3 km)
    - Open at depth (>100m-1000m)
  - Multiple mineralised zones
  - Drilling scheduled Q3-2015
  - **89%** Ownership
- Merolia Nickel Project
  - Superb **nickel** sulphide targets
  - On basal contact of mafic-ultramafic **intrusion**
  - Strong nickel anomalies at surface (up to **0.14% Ni**)
  - Similar geological setting to Nova-Bollinger deposit
  - **Drilling** scheduled Q3-2015
  - **100%** Ownership

**Rapid growth in JORC Resources**

**Exceptional Discovery Potential**

# Disclaimer and Important Information

## Forward Looking Statements

- This presentation has been prepared by White Cliff Minerals Limited (“White Cliff”). It contains forecasts and forward looking statements which are no guarantee of future performance and which involve certain risks. Actual results and future outcomes will in all likelihood differ from those outlined herein. The presentation should not be construed as an offer or invitation to subscribe for or purchase securities in White Cliff. Nor is it an inducement to make an offer or an invitation with respect to said securities.
- Forward-looking statements are statements that are not historical facts. Words such as “expect(s)”, “feel(s)”, “believe(s)”, “will”, “may”, “anticipate(s)” and similar expressions are intended to identify forward-looking statements. These statements include, but are not limited to statements regarding future production, resources or reserves and exploration results. All such statements are subject to certain risks and uncertainties, many of which are difficult to predict and generally beyond the control of the Company, that could cause actual results to differ materially from those expressed in, or implied or projected by, the forward-looking information and statements. These risks and uncertainties include, but are not limited to: (i) those relating to the interpretation of drill results, the geology, grade and continuity of mineral deposits and conclusions of economic evaluations, (ii) risks relating to possible variations in reserves, grade, planned mining dilution and ore loss, or recovery rates and changes in project parameters as plans continue to be refined, (iii) the potential for delays in exploration or development activities or the completion of feasibility studies, (iv) risks related to commodity price and foreign exchange rate fluctuations, (v) risks related to failure to obtain adequate financing on a timely basis and on acceptable terms or delays in obtaining governmental approvals or in the completion of development or construction activities, and (vi) other risks and uncertainties related to the Company’s prospects, properties and business strategy. Our audience is cautioned not to place undue reliance on these forward-looking statements that speak only as of the date hereof, and we do not undertake any obligation to revise and disseminate forward-looking statements to reflect events or circumstances after the date hereof, or to reflect the occurrence of or non-occurrence of any events.

## Competent Persons Statement

- The information in this report that relates to mineral exploration results, resources or reserves is based on information compiled by Mr Todd Hibberd, B.Sc Hons (Geol), MSc, Dip Bus, Member AusIMM, Member AICD and an employee of White Cliff Minerals Limited. Mr Hibberd has sufficient experience that is relevant to the style of mineralization and type of deposit under consideration and to the activity which he is undertaking to qualify as a Competent Person as defined in the 2012 Edition of the Australasian Code for Reporting of Exploration Results, Mineral Resources and Ore Reserves. Mr Hibberd consents to the inclusion in the report of the matters based on this information in the form and context in which it appears.



# Contacts

## Todd Hibberd

Managing Director

T: +61 (8) 9321 2233

## Mike Langoulant

Chairman

T: +61 (8) 9321 2233

## White Cliff Minerals Limited

T: +61 (8) 9321 2233

A: Suite 2, Level 1, 47 Havelock Street, West Perth WA 6005 | P: PO Box 368, West Perth WA 6872

E: [info@wcminerals.com.au](mailto:info@wcminerals.com.au) | W: [www.wcminerals.com.au](http://www.wcminerals.com.au)