

ASX ANNOUNCEMENT

Rumble to Commence Drilling Zanthus Bedrock Conductors Fraser Range

26th May 2015

Highlights

- The company has selected DDH1 to drill a cluster of 5 bedrock conductors in a similar setting to the only known massive Nickel Sulphide Discovery in the region Nova Bollinger
- The high impact drilling is scheduled to commence on the 10th of June
- Recent Gravity results indicate the conductors are coincident within the highest density zones that could represent Fraser Range Gabbro intrusions which can host nickel massive sulphides.
- Rumble will look to complete a geophysical down hole EM survey following completion of the work.

Rumble Resources Ltd ("Rumble" or "the Company") is pleased to announce that its maiden drilling programme has been scheduled at its Zanthus Project in the Fraser Range. Rumble is earning 75% by way of a Joint Venture with Blackham Resources Ltd (ASX:BLK).

Rumble has selected DDH1 to complete the high impact drilling which is scheduled to commence on the 10th of June. The drill programme and following assay results are expected to take 2-3 weeks to complete. DDH1 will utilise a high powered Sandvick multipurpose RC/Diamond truck mounted rig, top of the line for power, accuracy and has 2500m NQ depth capacity. Rumble is fully funded to complete this program and any further drilling if required. These 2 elements provide the flexibility if a discovery is made.

Zanthus Drill Targets

Rumble will drill a cluster of 5 bedrock conductors in and around an eye feature which is in a similar setting to the only known massive Nickel sulphide discovery in the region – Nova Bollinger – **See Figure 1**.

Rumblers technical team has completed a plan for 5 RC holes for 1200 metres targeting a hole at each of 5 bedrock conductors which may represent magmatic massive Nickel Sulphides.

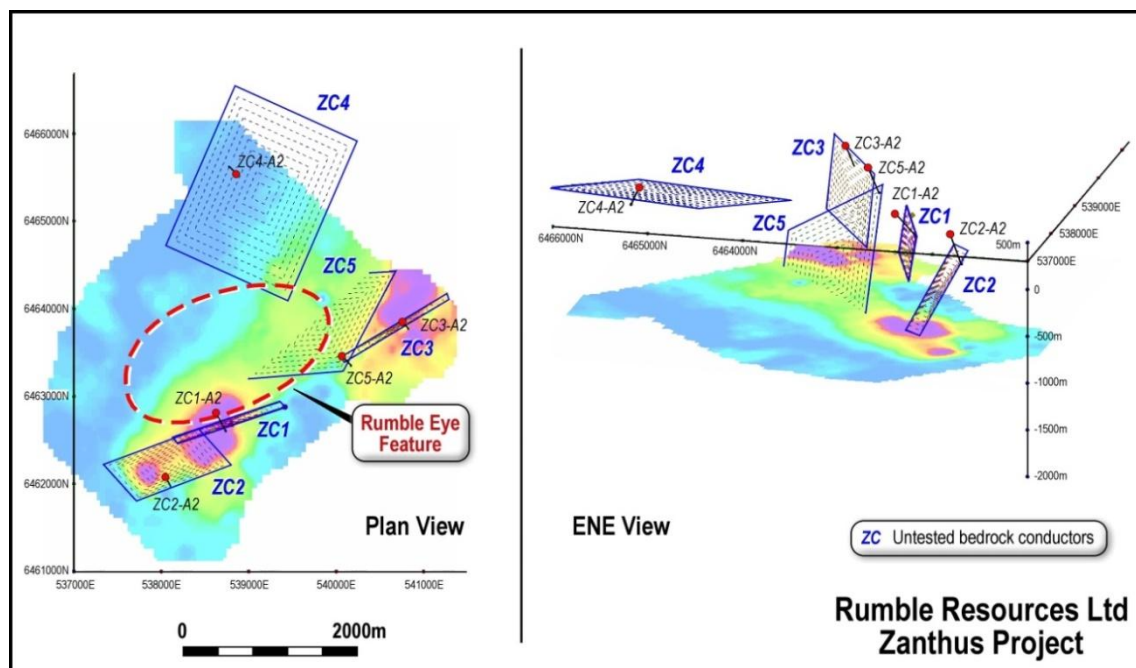


Figure 1 & 2: Drill Target s– planned Drill Holes into a cluster of 5 bedrock conductors in and around Eye Feature at Zanthus



Rumble Resources Ltd

Suite 9, 36 Ord Street,
West Perth, WA 6005

T +61 8 6555 3980

F +61 8 6555 3981

rumbleresources.com.au

ASX RTR

Executives & Management

Mr Shane Sikora
CEO

Mr Terry Topping
Executive Director

Mr Andrew McBain
Non-executive Director

Mr Matthew Banks
Non-executive Director

Mr Michael Smith
Non-executive Director

Mr Bruno Seneque
Company Secretary



With the recent gravity highlighting dense zones surrounding and coincident with these conductors it further enhances the status of these tier 1 drill ready targets. In **Figure 3 the Red zones with the white caps** highlights the highest density zones within the Zanthus Project. Finding conductors coincident within the highest density zones is significant as these could represent massive sulphide accumulations within Fraser Range Gabbro intrusions **rather than sedimentary units** that can also feature bedrock conductors.

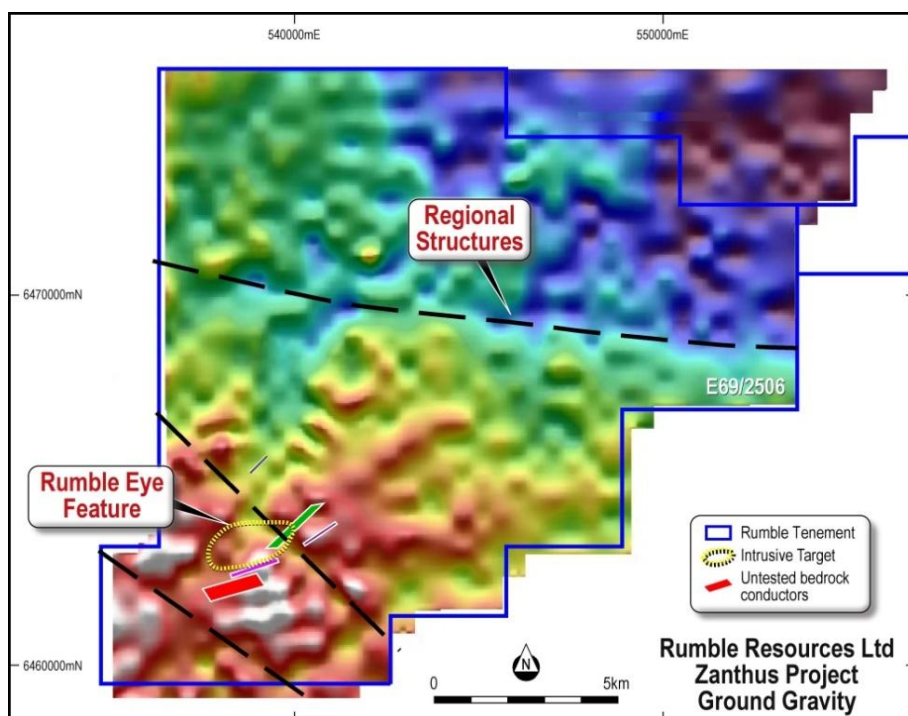


Figure 3: Gravity highlighting dense bodies surrounding and coincident with the Zanthus bedrock conductors to be drill tested.

Following the completion of the program a down-hole EM survey will be completed to provide a more detailed survey of the bedrock conductor.

As part of the exploration activities Rumble has been awarded \$150,000 to co-fund exploration on the Zanthus Project through the WA Government's Exploration Initiative Scheme (EIS).

The cluster of conductors and mag features are very similar to the Nova Bollinger Discovery - see the comparison in Figure 4 and 5. Nova Bollinger was discovered when drilling a bedrock conductor within an eye feature.

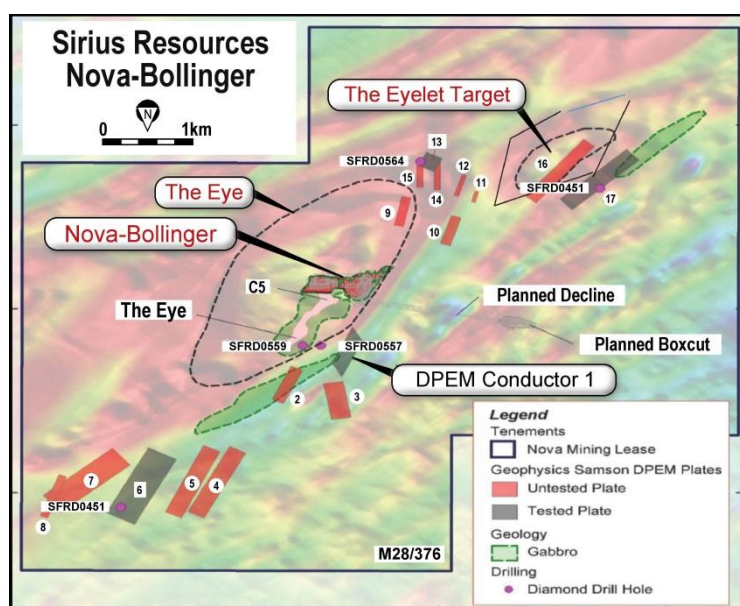


Figure 4. Sirius Resources Eye Feature with conductor clusters and mag features

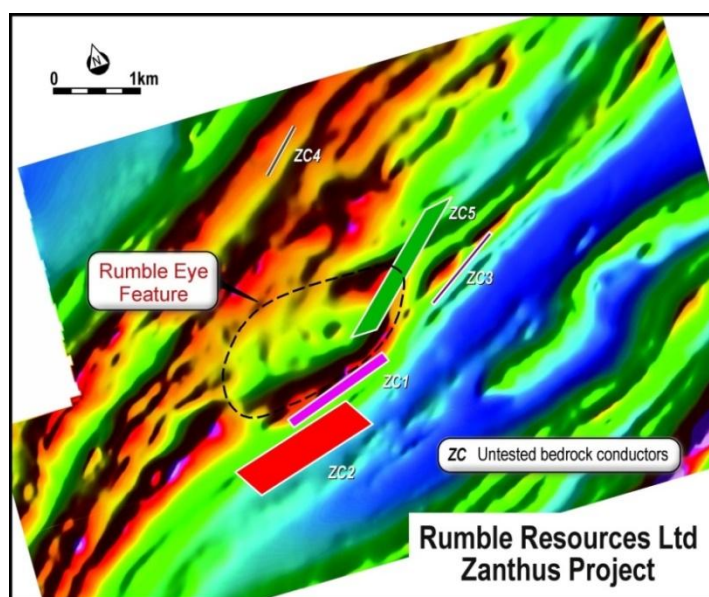


Figure 5. Rumble Resources Eye Feature with conductor clusters and mag features



Rumbles CEO, Mr Shane Sikora, said: “our systematic exploration approach has continued to tick all the boxes at the Zanthus Project. Rumble has identified 5 bedrock conductors surrounding and coincident with gravity dense zones in a magnetic signature very similar to the only known massive nickel sulphide discover in Nova Bollinger Discovery. Rumble believes all these elements combined highlight these bedrock conductors represent some of the most compelling drill targets in the Fraser Range and we look forward to the commencement of drilling on the 10th of June.”

Shane Sikora
CEO

- ENDS -

For further information visit rumbleresources.com.au or contact enquiries@rumbleresources.com.au.

About Rumble Resources Ltd

Rumble Resources Ltd is an Australian based exploration company, officially admitted to the ASX on the 1st July 2011. Rumble was established with the aim of adding significant value to its current gold and base metal assets and will continue to look at mineral acquisition opportunities both in Australia and abroad.

Competent Persons Statement

The information in this report that relates to Exploration Results is based on information compiled by Mr Terry Topping, who is a Member of the Australasian Institute of Mining & Metallurgy and the Australian Institute of Geoscientists. Mr Topping is a fulltime employee of Rumble Resources Limited and has sufficient experience relevant to the style of mineralisation and type of deposit under consideration and to the activity which he is undertaking to qualify as a Competent Person as defined in the 2012 Edition of the “Australasian Code for Reporting of Exploration Results, Mineral Resources and Ore Reserves”. Mr Topping consents to the inclusion in the report of the matters based on his information in the form and context in which it appears.