



ACN 092 471 513

8 June 2015

ASX Release

Penny's Find Gold Deposit Partnership change unlocks potential

Empire Resources Ltd ('Empire', ASX code:ERL) is pleased to announce that the purchase of 100% of unlisted Brimstone Resources Ltd ('Brimstone') from LionGold Corporation of Singapore by unlisted Australian company Barola Resources Limited ("Barola") was successfully concluded on the 3 June 2015.

Brimstone Resources Ltd owns a 40% share in the Penny's Find gold project and a 51% interest in the adjacent Mt McLeay project. In turn, Empire Resources currently holds a 32% interest in Barola Resources thereby owning a **73% interest** in the Penny's Find gold project (60% direct and 13% indirect).

The completion of this sale has unlocked the potential of Penny's Find and will enable a fast track to production for an advanced gold project.

Empire plans to be in production within nine months targeting production of ~19,000oz in the first year, based on the recent scoping study referred to below*.

The Penny's Find gold project is located 50km east of Kalgoorlie in Western Australia. As reported to the ASX on the 17 February 2015, the project contains a 2012 JORC compliant reportable mineral resource of **644,000 tonnes @ 2.99g/t Au** for **61,900 ounces**.#

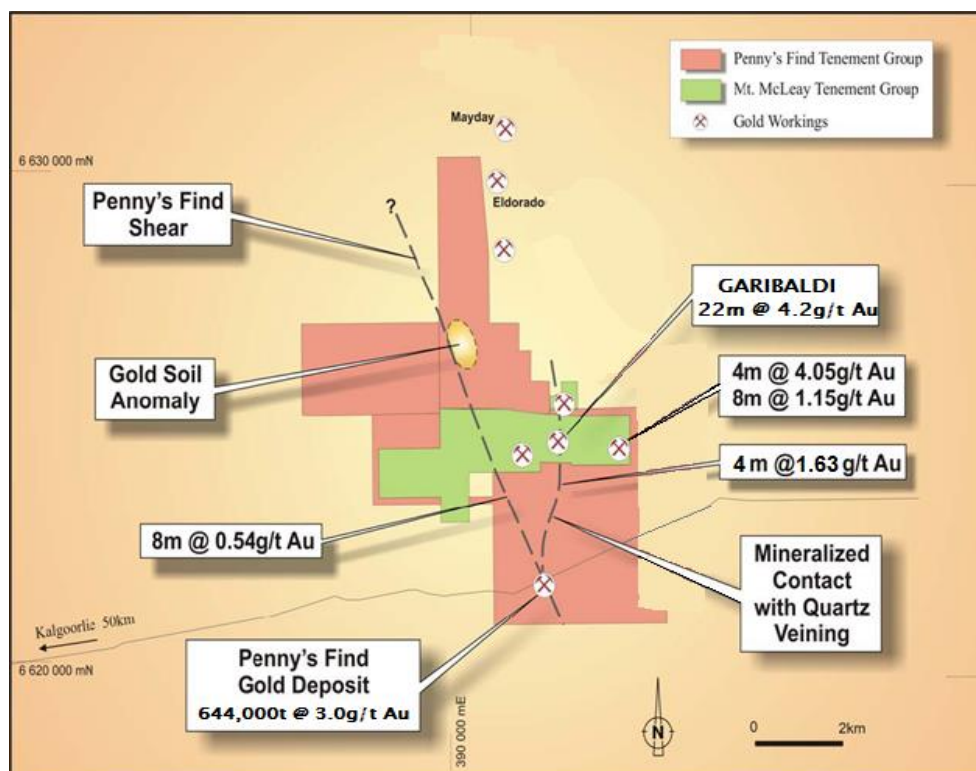
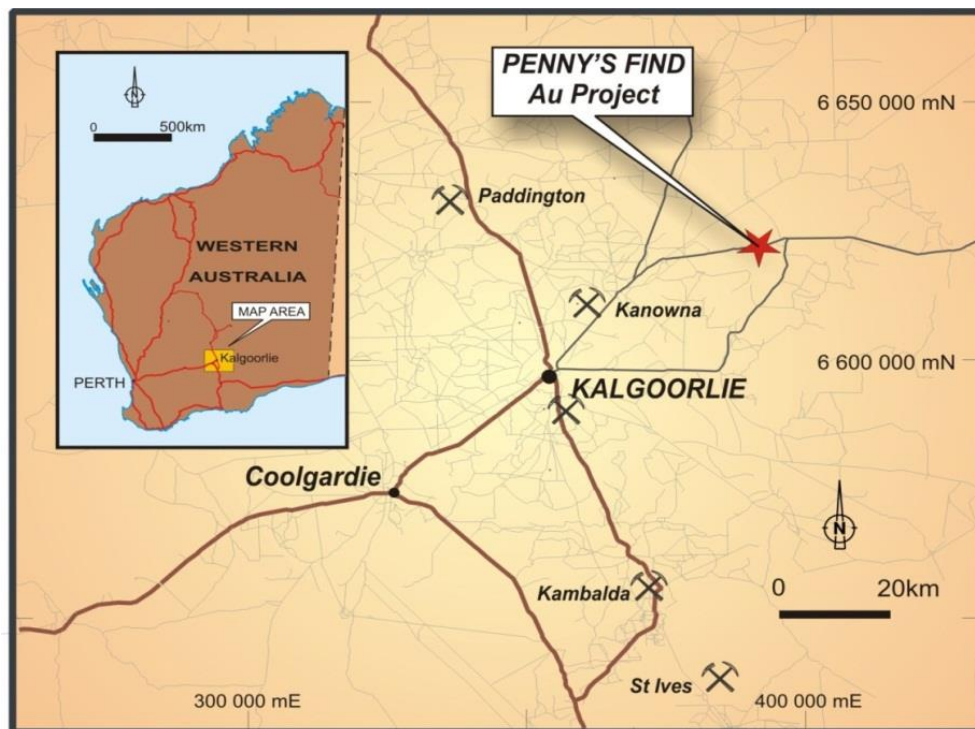
High grade, coarse gold mineralization at Penny's Find is hosted by quartz veins at the contact between shale and basalt. Preliminary metallurgical test work has shown both oxide and fresh mineralization to be free milling with a high gravity recoverable gold component of >60% and a total gold recovery of >96%. The deposit is situated on granted Mining Lease 27/156. Further details on the deposit are available from previous ASX quarterly reports and announcements.

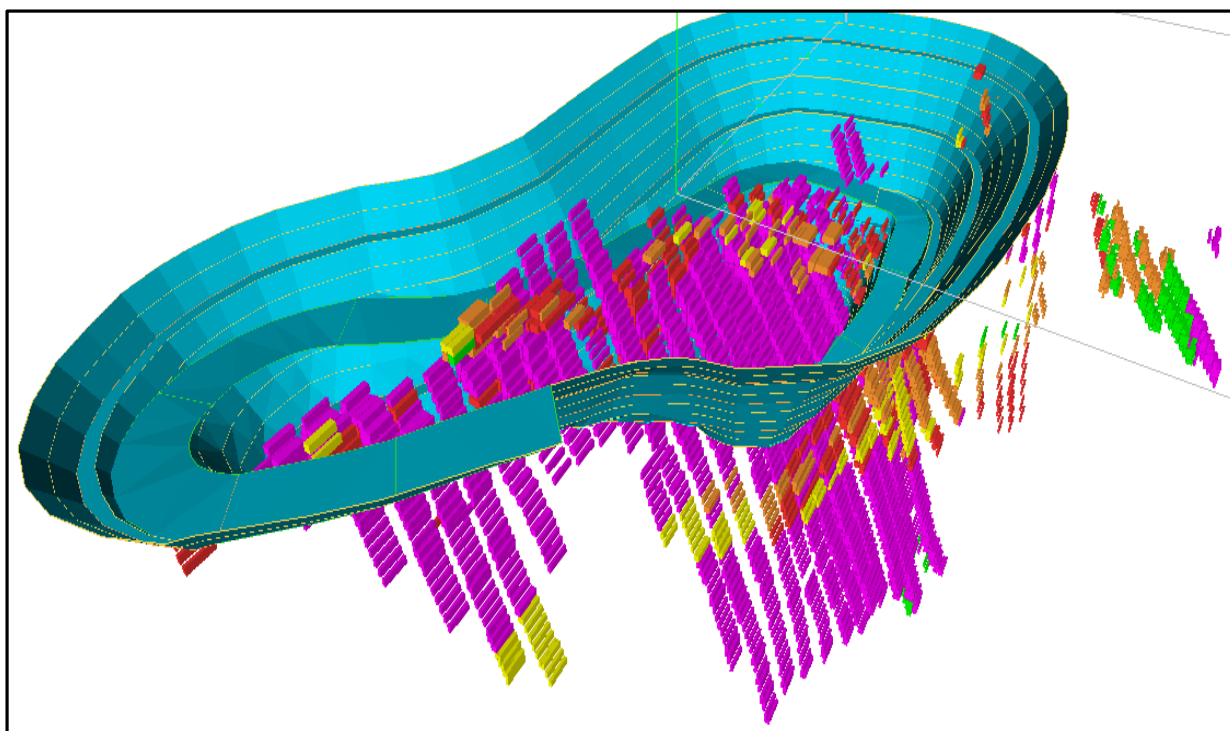
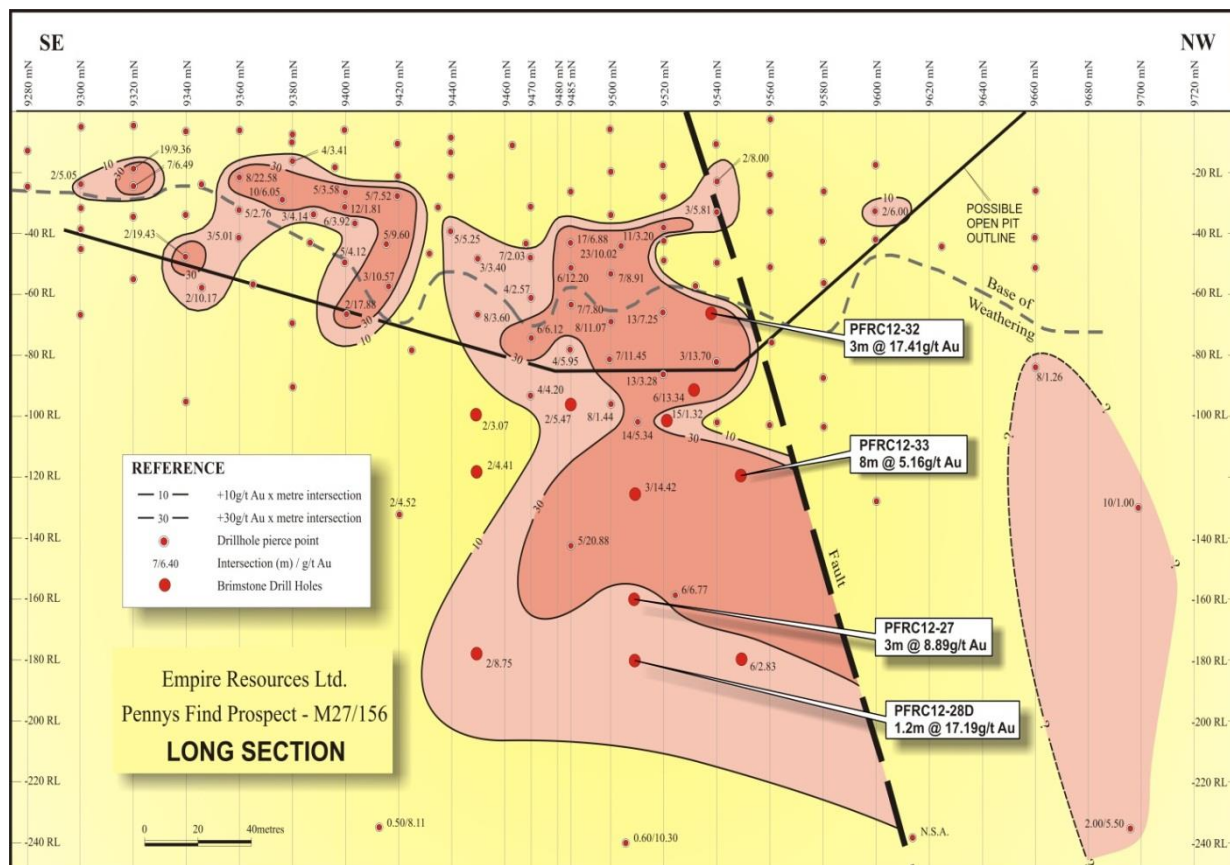
Given the current high Australian gold price (~\$1500/oz) and recent fall in mining costs due to the end of the mining boom, Empire and Barola are now in discussions to form a joint venture to commence mining operations as soon as possible.

Recent mine scoping studies have been completed which confirm the robustness of the deposit using a similar conceptual pit design to previous studies. Expressions of interest in developing Penny's Find have already been made by a number of mining contractors.

Potential also exists to add significant gold resources to those already defined at Penny's Find. Rubicon Resources Ltd ('Rubicon', ASX Code 'RBR') announced to the ASX on the 12 March 2015, assay results from RC drilling at the Garibaldi prospect on the Mt McLeay project just 3 km north of Penny's Find. Rubicon reported one of these holes returned **22m @ 4.2g/t Au** from 34m downhole depth. The Garibaldi prospect lies on the same mineralized contact as Penny's Find.

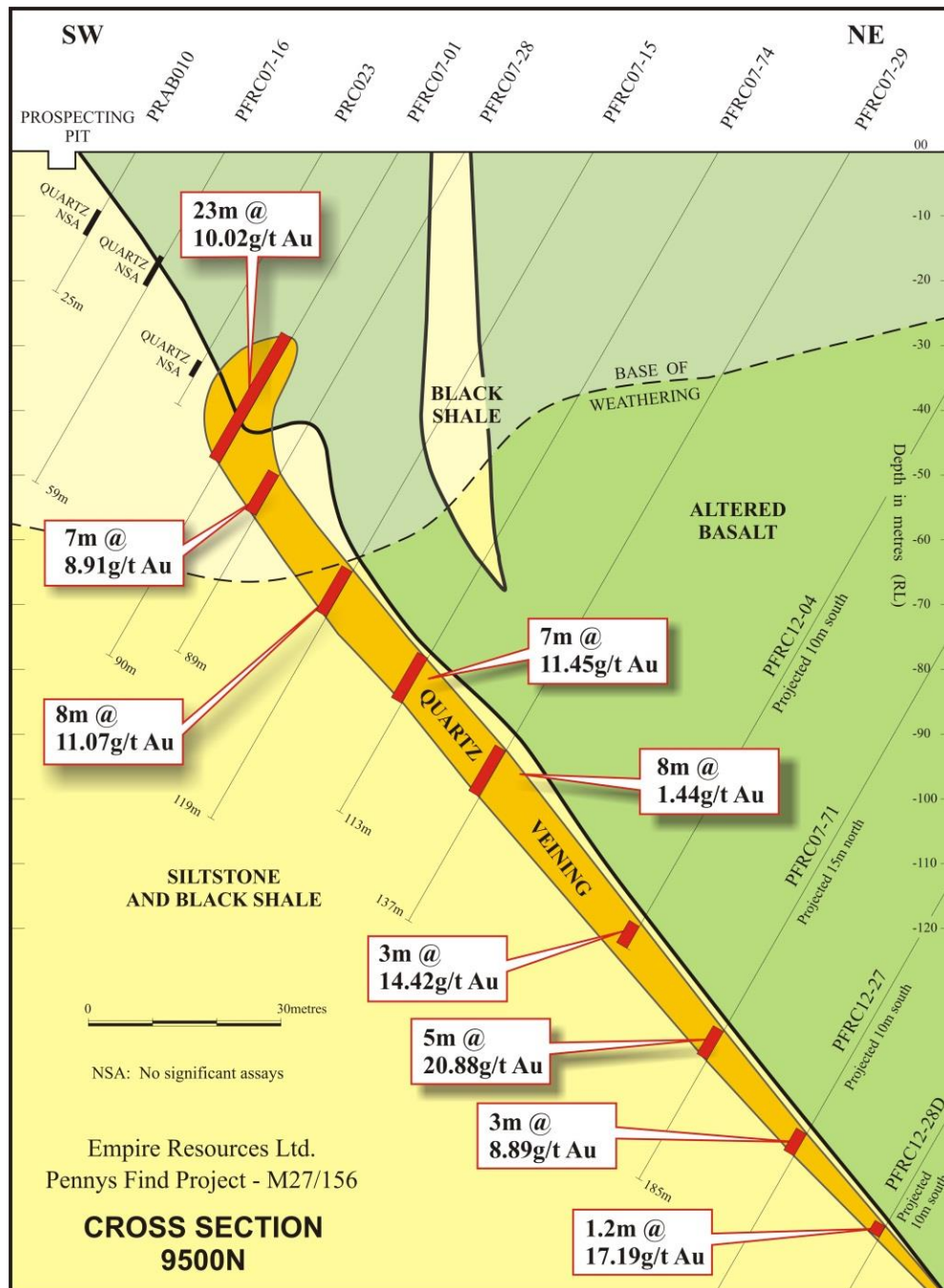
Empire Resources, through its 32% holding in Barola, has a 16% interest in the Mt McLeay project. The discovery of further gold resources in close proximity to Penny's Find would greatly enhance the economics of any future mining operation.





Penny's Find Conceptual Pit Design# – looking NW
Model Blocks shown >0.7g/t Au.
Red 2.0 - 3.00g/t Au, Purple >3.0g/t Au

The open pit outline shown above is based on a scoping study conducted in the first quarter of 2009. It does not mean that mineralization above the outline is currently economic. To determine if any mineralization is currently economic a feasibility study will have to be undertaken using up to date costs and parameters.



DAVID SARGEANT
MANAGING DIRECTOR

June 2015

For further information on the Company, visit www.resourcesempire.com.au

David Sargeant – Managing Director
Adrian Jessup – Executive Director

Phone: +61 8 9361 3100
Phone: +61 8 9361 3100

Scoping Study

*The 2009 Scoping Study referred to in this announcement is based on low-level technical and economic assessments, and is insufficient to provide assurance of an economic development case at this stage, or to provide certainty that the conclusions of the Scoping Study will be realised.’

Mineral Resource Estimates

PENNY’S FIND Reportable Mineral Resource above 1g/t Au cut-off		
Class	Tonnes	Au g/t
Indicated	407,000	3.22
Inferred	237,000	2.60
Total	644,000	2.99

The information in this release concerning the Mineral Resources for the Penny’s Find Deposit has been taken from a report (the Report) by DataGeo Geological Consultants provided to Empire Resources Limited by its tenant in common, Brimstone Resources Ltd. This Report states that the mineral resource has been estimated by Mr Peter Ball B.Sc who is a director of DataGeo Geological Consultants and is a member of the Australasian Institute of Mining and Metallurgy (AusIMM). Mr Ball has sufficient experience which is relevant to the styles of mineralization and types of deposit under consideration and qualifies as a Competent Person as defined in the 2012 Edition of the “Australasian Code for Reporting of Exploration Results, Mineral Resources and Ore Reserves”. Mr Ball provided consent to Brimstone Resources Ltd for the public release of the information concerning the mineral resource for Penny’s Find and confirms that the information in this release in both the form and the context in which it appears reflects the content of the Report.

APPENDIX 1

Reporting Criteria

The data and interpretation utilised and the resultant mineral resource estimate for the Penny's Find Deposit is summarised as follows: -

- Geology and Mineralisation Interpretation
 - The deposit consists of a medium to steeply easterly dipping north-south striking sheared quartz/carbonate zone which is anomalous in gold. There is evidence of narrow, steeply east dipping gold enriched foot and hanging wall zones and some flat lying supergene enrichment. The Shear is mineralised over a strike length of 500m, a depth of 280m and a true width in the main shear zone which averages between 5 and 10m. The shear is offset in places. The Deposit remains open at depth although the shear appears to be thinning.
 - The Shear zone is represented by a wireframed solid as are all the mineralised zones outside the Shear. The weathering profile is represented by wireframed surfaces.
- Drill Information and Sampling
 - The deposit has been drilled from surface using RAB, reverse circulation (RC) and diamond coring. Only the drilling from 2007 and 2012 has been used in this estimate. A total of 104 RC and diamond holes containing 11,312m has been used in the mineral estimate.
 - The core recovery is generally very good, averaging more than 95%. The RC sample recovery is erratic being described as good (thought to be >75% recovery) in dry conditions which is most of the time and within the mineralised zone to poor (thought to be < 25%) in wet conditions.
 - Hole collars have been surveyed by DGPS and the orientation and inclination at collar is set out using compass and clinometer. Down hole survey for the 2007 series holes was by down hole camera measuring dip only except for the last holes of the program where dip and azimuth were measured. The 2012 program was down hole surveyed by camera with dip only recorded. Diamond tails were surveyed by gyroscopic methods.
 - The drilling and sample collection techniques consisted of RC chip collected at 1m intervals via the cyclone into sample bags with on some occasions a rotary splitter used to collect a smaller sample at the same time. The samples were speared and 4 consecutive samples were combined for despatch to the laboratory. On occasions the 1m rotary split samples were sent initially if the material returned was obviously

mineralised. If the 4m composites returned an assay above a threshold then the large samples were re-spearer or the rotary splitter sample was taken and submitted individually. The RC chips are logged for mineral content and geology. The core is stored in core boxes labelled with the hole number and length contained. The core is transported to the core storage area where it is logged geologically and intervals for analysis are marked up by the site geologist. The intervals selected for analysis had the core ½ed at site to be sent for preparation and analysis. In the 2012 drilling program Standards and Blanks were included with the samples despatched for analysis.

- Sample Preparation and Analysis
 - Drill samples have been prepared and analysed at commercial accredited laboratories in Western Australia
 - the preparation is by drying, crushing, riffing and pulverising.
 - gold content is determined FA techniques with atomic absorption or ICP finish. Some SFA analysis has been carried out.
 - When in place QAQC protocols placed approximately 1 standard and 1 blank with every 12 routine samples submitted to the laboratory. An umpire laboratory was occasionally used as were field duplicates to assist in analytical validation
- Estimation Methodology
 - The drill hole information is composited within the mineralisation interpretation to the most common sample length within the dataset – 1m down hole
 - Grade is estimated by ordinary kriging for the largest zone with demonstrated continuity and sufficient composite information from composite data top-cut to 25g/t. Other zones are estimated by inverse distance to the power of 3 techniques or when there is < 10 composites by assigning a grade of the average of the composites. The estimation is constrained by a hard boundaries representing the extent of the mineralisation and in zones with distorted population statistics (even after top-cutting) grade restrictions on the higher grade. The grade is estimated into a block model with a cell size of 5mE x 10mN x 5mRL.
 - Specific gravity is assigned to the block model by weathering profile position and, in the fresh zone, by reference to the position of the shear zone.
- Validation and Classification
 - The block grade estimates are validated against the composites both globally (for all zones) and spatially for the largest zone
 - The block estimates are classified according to geological confidence, length of search, number of composites, number of holes and quality of the input data.
- Reporting
 - Reporting cut-off has been determined to include all material which may be by grade and positional suitable for open cut mining to produce

a head grade of 3g/t Au. As such it was determined to report the mineral resource at 1g/t Au cut-off.

- Mining and metallurgy
 - metallurgical test work has been conducted on two very high grade samples from the Deposit. Whilst the results were positive for grinding, gravity separation and cyanide leaching the samples are not representative of what has been modelled thus only indicative conclusions can be drawn.
 - Previous scoping studies on the August 2007 mineral resource estimate indicated that open cut mining may be economic.

JORC Table 1, Sections 1, 2 and 3 summarise the assessment and reporting criteria for this estimate and refers only to the data used for such.

Section 1: Sampling Techniques and Data		
Criteria	Explanation	Comments
Sampling techniques	<ul style="list-style-type: none"> • <i>Nature and quality of sampling (eg cut channels, random chips, or specific specialised industry standard measurement tools appropriate to the minerals under investigation, such as down hole gamma sondes, or handheld XRF instruments, etc). These examples should not be taken as limiting the broad meaning of sampling.</i> 	The deposit has been drilled and sampled by diamond coring, reverse circulation and rotary air blast methods with holes on variable spacings over a 500m strike length, the closest being a 20mE x 10m N grid. The total metres of the 104 RC and diamond holes used in mineral resource estimation is 11,312m. The holes are drilled mostly to the west to intersect the relatively steeply east dipping north-south orientated mineralisation.
	<ul style="list-style-type: none"> • <i>Include reference to measures taken to ensure sample representivity and the appropriate calibration of any measurement tools or systems used.</i> 	Initial RAB and shallow RC drilling targeted the areas of old workings and identified near surface mineralisation. This was supplemented by deeper drilling to highlight the mineralisation within the Shear zone. The RC samples are collected from the cyclone of the rig with some split to smaller samples using a rotary splitter attached to the cyclone or spear sampled from the large sample. Sample representivity was governed by sample recovery which can be erratic in wet conditions. Diamond core was collected into core trays.

	<ul style="list-style-type: none"> Aspects of the determination of mineralisation that are Material to the Public Report. In cases where 'industry standard' work has been done this would be relatively simple (eg 'reverse circulation drilling was used to obtain 1 m samples from which 3 kg was pulverised to produce a 30 g charge for fire assay'). In other cases more explanation may be required, such as where there is coarse gold that has inherent sampling problems. Unusual commodities or mineralisation types (eg submarine nodules) may warrant disclosure of detailed information. 	<p>The diamond core was HQ sized near surface and NQ sized in the mineralised zones. Core was halved and 1/2 sent for sample preparation by crushing, pulverising and splitting to produce either a 30gm or 40gm charged size dependent on the Laboratory. RC drilling collected samples at 1m intervals down hole. These 1m samples were either composited to 4m intervals by spear sampling or submitted as 1m samples each of approximately 2.5 to 3Kg. These samples were dried, crushed and pulverised and either a 30gm, 40gm or 50gm sub-sample (dependent on laboratory) selected for FA assay.</p>
Drilling techniques	<ul style="list-style-type: none"> Drill type (eg core, reverse circulation, open-hole hammer, rotary air blast, auger, Bangka, sonic, etc) and details (eg core diameter, triple or standard tube, depth of diamond tails, face-sampling bit or other type, whether core is oriented and if so, by what method, etc). 	<p>Diamond drilling (4 surface collared holes and 2 tails to RC holes) is mostly NQ sized through the mineralised zone, the surface holes totalled 1,259m and the two tails 198m. The core was not orientated. The RC holes were all 135mm diameter and drilled with a face sampling bit, the total number of holes is 100 and the totalled 9855m.</p>
Drill sample recovery	<ul style="list-style-type: none"> Method of recording and assessing core and chip sample recoveries and results assessed. 	<p>The core recovery recorded is length recovered per run, the recovery is in excess of 95%. The RC sample recovery is recorded descriptively as good, medium or poor and that work by weighing samples indicated that good recovery was in excess of 75% and poor recovery was usually less than 25%, this occurred mostly in wet ground.</p>
	<ul style="list-style-type: none"> Measures taken to maximise sample recovery and ensure representative nature of the samples. 	<p>For RC drilling the collar was sealed and air pressure was used to maximise return. The cyclone was cleaned between samples.</p>
	<ul style="list-style-type: none"> Whether a relationship exists between sample recovery and grade and whether sample bias may have occurred due to preferential loss/gain of fine/coarse material. 	<p>No assessment has been made of grade v RC sample recovery but based on the descriptive assessment the majority of mineralisation was returned dry and thus usually with good recovery. The competency of the core demonstrates that there should be minimal potential for sampling bias.</p>

Logging	<ul style="list-style-type: none"> Whether core and chip samples have been geologically and geotechnically logged to a level of detail to support appropriate Mineral Resource estimation, mining studies and metallurgical studies. 	Core and chips have been geologically logged recording lithology, mineralisation, veining, alteration, weathering and some geotechnical features (core only) like RQD. The geological logging is appropriate to the style of the Deposit.
	<ul style="list-style-type: none"> Whether logging is qualitative or quantitative in nature. Core (or costean, channel, etc) photography 	geological logging is both in summary (comments) and detailed by interval for the information listed above.
	<ul style="list-style-type: none"> The total length and percentage of the relevant intersections logged. 	the entire length of all diamond and RC holes, apart from surface casing, has been logged.
Sub-sampling techniques and sample preparation	<ul style="list-style-type: none"> If core, whether cut or sawn and whether quarter, half or all core taken. 	all core to be sampled was 1/2ed using a mechanical saw. It is not known if the core was consistently taken from one side of the stick.
	<ul style="list-style-type: none"> If non-core, whether riffled, tube sampled, rotary split, etc and whether sampled wet or dry. 	RC samples are collected from the cyclone into a plastic bucket and then transferred to a sample bag. In addition a smaller sample is split using a rotary splitter attached to the cyclone. The cyclone was cleaned with air and any loose material scrapped off between samples. Sub-samples of the larger samples are taken with a spear.
	<ul style="list-style-type: none"> For all sample types, the nature, quality and appropriateness of the sample preparation technique. 	All samples (approx 2.5 to 3Kg for the RC samples and 1/2 NQ core up to 1m long) are provided to a commercial accredited laboratory facility for the preparation of samples using industry standard practises of drying, crushing and pulverising to allow sub-sampling by riffle or rotary splitter to a 30 to 50gm charge size.
	<ul style="list-style-type: none"> Quality control procedures adopted for all sub-sampling stages to maximise representivity of samples. 	Empire did not include Standards or Blanks with their routine samples submitted to the Laboratory but used an Umpire Laboratory and SFA v FA comparisons to provide control on quality. Brimstone included Standards and Blanks at rates of approximately 1 QAQC sample to 12

		Routine samples or better. Whilst there was some evidence of bias of the lower grade Standard (1.3g/t) the majority of results can be considered acceptable.
	<ul style="list-style-type: none"> <i>Measures taken to ensure that the sampling is representative of the in situ material collected, including for instance results for field duplicate/second-half sampling.</i> 	Duplicate RC sampling was conducted in 2012 and the results were supportive of the original results. No 1/2nd half core duplicate assay results have been observed.
	<ul style="list-style-type: none"> <i>Whether sample sizes are appropriate to the grain size of the material being sampled.</i> 	Whilst there is coarse gold in the system the outlier grades returned are not excessive as such the sampling appears to be representative and thus the global grade is being fairly represented.
Quality of assay data and laboratory tests	<ul style="list-style-type: none"> <i>The nature, quality and appropriateness of the assaying and laboratory procedures used and whether the technique is considered partial or total.</i> 	The assay techniques applied for the measurement of gold content is appropriate for the determination of the level of gold in the sample. Comparison between SFA and FA methods are reasonable this indicating that the analytical methods adopted report total gold content.
	<ul style="list-style-type: none"> <i>For geophysical tools, spectrometers, handheld XRF instruments, etc, the parameters used in determining the analysis including instrument make and model, reading times, calibrations factors applied and their derivation, etc.</i> 	not applicable
	<ul style="list-style-type: none"> <i>Nature of quality control procedures adopted (eg standards, blanks, duplicates, external laboratory checks) and whether acceptable levels of accuracy (ie lack of bias) and precision have been established.</i> 	Standards and Blanks were included at approximately 1 in 12 and 1 in 10 of the number of samples submitted for the recent (2012) holes. The results were mixed with the lower grade Standard showing a potential high grade bias. Umpire laboratory checking provided support for the original results.

<i>Verification of sampling and assaying</i>	<ul style="list-style-type: none"> <i>The verification of significant intersections by either independent or alternative company personnel.</i> 	mineralisation intercepts have been determined by previous and current company personnel and appear correct
	<ul style="list-style-type: none"> <i>The use of twinned holes.</i> 	No specific twinning program has been conducted.
	<ul style="list-style-type: none"> <i>Documentation of primary data, data entry procedures, data verification, data storage (physical and electronic) protocols</i> 	primary data was recorded directly onto electronic spread sheets and validated against expected codes. Assay information in electronic form from the laboratories was merged with sample interval data on sample number
	<ul style="list-style-type: none"> <i>Discuss any adjustment to assay data.</i> 	non applied
<i>Location of data points</i>	<ul style="list-style-type: none"> <i>Accuracy and quality of surveys used to locate drill holes (collar and down-hole surveys), trenches, mine workings and other locations used in Mineral Resource estimation.</i> 	The collar positions were surveyed by contractors after the completion of the 2012 drilling using an RTKGPS on the GDA 94 Zone 51 Datum and the AHD. This survey included some of the 2007 drill collars which confirmed the location of these holes in the 2007 data set. The orientation and dip at the start of the hole was recorded for all holes. Down hole information was recorded by single shot camera that measured dip only for most RC holes with the exception of later part of the 2007 RC program where azimuth was also measured. The diamond tails were measured for dip and azimuth using a gyroscopic inclinometer.
	<ul style="list-style-type: none"> <i>Specification of the grid system used.</i> 	The regional grid is GDA94 Zone 51 and the Deposit is laid out on a local grid for a central control point with a 40° rotation.
	<ul style="list-style-type: none"> <i>Quality and adequacy of topographic control.</i> 	Topographic control is taken from contouring the drill hole collar information and applying observations of the site to assist in control.

<i>Data spacing and distribution</i>	<ul style="list-style-type: none"> • <i>Data spacing for reporting of Exploration Results.</i> 	Drill spacing varies with position in the deposit from 10mN x 20mE to in excess of 50m.
	<ul style="list-style-type: none"> • <i>Whether the data spacing and distribution is sufficient to establish the degree of geological and grade continuity appropriate for the Mineral Resource and Ore Reserve estimation procedure(s) and classifications applied.</i> 	Successive drilling programs have in filled and extended (at depth) the previous drilling and on the majority of occasions drilling has returned mineralisation in the expected locations. This provides a high degree of confidence in the geological continuity. Close spaced drilling provides good support for positioning of the mineralisation by zone.
	<ul style="list-style-type: none"> • <i>Whether sample compositing has been applied.</i> 	The sampling reflects the geological conditions. For mineral resource estimation a 1m composite length was chosen given that this is the dominant sample length.
<i>Orientation of data in relation to geological structure</i>	<ul style="list-style-type: none"> • <i>Whether the orientation of sampling achieves unbiased sampling of possible structures and the extent to which this is known, considering the deposit type.</i> 	The drilling is oriented as best as possible to perpendicular to the structure/geology containing or controlling the mineralisation.
	<ul style="list-style-type: none"> • <i>If the relationship between the drilling orientation and the orientation of key mineralised structures is considered to have introduced a sampling bias, this should be assessed and reported if material.</i> 	No sampling bias is considered to have been introduced.
<i>Sample security</i>	<ul style="list-style-type: none"> • <i>The measures taken to ensure sample security.</i> 	The chain of custody adopted by operators of the project appears appropriate and is based on responsibility and documentation.
<i>Audits or reviews</i>	<ul style="list-style-type: none"> • <i>The results of any audits or reviews of sampling techniques and data.</i> 	A brief audit of assay records revealed no data errors.

Section 2 Reporting of Exploration Results

Criteria	JORC Code explanation	Commentary
<i>Mineral tenement and land tenure status</i>	<ul style="list-style-type: none"> <i>Type, reference name/number, location and ownership including agreements or material issues with third parties such as joint ventures, partnerships, overriding royalties, native title interests, historical sites, wilderness or national park and environmental settings.</i> <i>The security of the tenure held at the time of reporting along with any known impediments to obtaining a licence to operate in the area.</i> 	<ul style="list-style-type: none"> Penny's Find is located on granted Mining Lease 27/156. M27/156 is owned Empire Resources Ltd 60% and Brimstone Resources Ltd 40%. They are tenants in common. A royalty of 50 cents per tonne of ore treated applies to production in excess of 200,000 tonnes. The tenement is in good standing with the WA DMP.
<i>Exploration done by other parties</i>	<ul style="list-style-type: none"> <i>Acknowledgment and appraisal of exploration by other parties.</i> 	<ul style="list-style-type: none"> Small drilling programmes were undertaken at Penny's Find by Croesus Mining and Defiance Mining. The results were not sufficiently encouraging for them to continue work.
<i>Geology</i>	<ul style="list-style-type: none"> <i>Deposit type, geological setting and style of mineralisation.</i> 	<p>The Penny's Find deposit consists of gold in shear hosted quartz veins with the mineralization moderately to steeply east dipping. The shear is of variable thickness (averaging between 5 and 10m) and strikes for 500m and has a drill supported maximum depth of 280m vertical metres and is outcropping. There is some evidence of supergene enrichment in the near surface weathered horizon. The shear lies on the contact between basalt and sediments. Minor old workings are in evidence consisting of three shafts and numerous trenches.</p>
<i>Drill hole Information</i>	<ul style="list-style-type: none"> <i>A summary of all information material to the understanding of the exploration results including a tabulation of the following information for all Material drill holes:</i> <ul style="list-style-type: none"> <i>easting and northing of the drill hole collar</i> <i>elevation or RL (Reduced Level – elevation above sea level in metres) of the drill hole collar</i> <i>dip and azimuth of the hole</i> <i>down hole length and interception depth</i> <i>hole length.</i> <i>If the exclusion of this information is justified on the basis that the information is not Material and this exclusion does not detract from the understanding of the report, the Competent Person should clearly explain why this is the case.</i> 	<ul style="list-style-type: none"> No exploration results are included in this release, all information relates to the Mineral Resource. <p>Drill hole information relevant to the Mineral Resource is reported in Section 1.</p>

Criteria	JORC Code explanation	Commentary
<i>Data aggregation methods</i>	<ul style="list-style-type: none"> <i>In reporting Exploration Results, weighting averaging techniques, maximum and/or minimum grade truncations (eg cutting of high grades) and cut-off grades are usually Material and should be stated.</i> <i>Where aggregate intercepts incorporate short lengths of high grade results and longer lengths of low grade results, the procedure used for such aggregation should be stated and some typical examples of such aggregations should be shown in detail.</i> <i>The assumptions used for any reporting of metal equivalent values should be clearly stated.</i> 	<ul style="list-style-type: none"> No exploration results are included in this release, all information relates to the Mineral Resource. <p>Drill hole information relevant to the Mineral Resource is reported in Section 1.</p>
<i>Relationship between mineralisation widths and intercept lengths</i>	<ul style="list-style-type: none"> <i>These relationships are particularly important in the reporting of Exploration Results.</i> <i>If the geometry of the mineralisation with respect to the drill hole angle is known, its nature should be reported.</i> <i>If it is not known and only the down hole lengths are reported, there should be a clear statement to this effect (eg 'down hole length, true width not known').</i> 	<ul style="list-style-type: none"> No exploration results are included in this release, all information relates to the Mineral Resource. <p>Drill hole information relevant to the Mineral Resource is reported in Section 1.</p>
<i>Diagrams</i>	<ul style="list-style-type: none"> <i>Appropriate maps and sections (with scales) and tabulations of intercepts should be included for any significant discovery being reported These should include, but not be limited to a plan view of drill hole collar locations and appropriate sectional views.</i> 	<ul style="list-style-type: none"> No exploration results are included in this release, all information relates to the Mineral Resource.
<i>Balanced reporting</i>	<ul style="list-style-type: none"> <i>Where comprehensive reporting of all Exploration Results is not practicable, representative reporting of both low and high grades and/or widths should be practiced to avoid misleading reporting of Exploration Results.</i> 	<ul style="list-style-type: none"> No exploration results are included in this release, all information relates to the Mineral Resource.
<i>Other substantive exploration data</i>	<ul style="list-style-type: none"> <i>Other exploration data, if meaningful and material, should be reported including (but not limited to): geological observations; geophysical survey results; geochemical survey results; bulk samples – size and method of treatment; metallurgical test results; bulk density, groundwater, geotechnical and rock characteristics; potential deleterious or contaminating substances.</i> 	<ul style="list-style-type: none"> No exploration results are included in this release, all information relates to the Mineral Resource.
<i>Further work</i>	<ul style="list-style-type: none"> <i>The nature and scale of planned further work (eg tests for lateral extensions or depth extensions or large-scale step-out drilling).</i> <i>Diagrams clearly highlighting the areas of possible extensions, including the main geological interpretations and future drilling areas, provided this information is not commercially sensitive.</i> 	<ul style="list-style-type: none"> No exploration results are included in this release, all information relates to the Mineral Resource.

Section 3 : Estimation and Reporting of Mineral Resources		
Criteria	Explanation	Comments
Database integrity	<ul style="list-style-type: none"> Measures taken to ensure that data has not been corrupted by, for example, transcription or keying errors, between its initial collection and its use for Mineral Resource estimation purposes. 	There is no data storage system in place. Data from logging, sample submission and the assay laboratory is combined in many spreadsheets. Key holes utilised in the mineral resource assessment had their sample submission and assay laboratory data re-entered and compared to the data within the supplied spreadsheet and no errors were found. This was not an exhaustive test but sufficient to give confidence that the data to be utilised is accurate with respect to the supporting information.
	<ul style="list-style-type: none"> Data validation procedures used. 	Data is validated when combined from the various sources described above. The small audit described above provided sufficient confidence in the data contents to state that it most likely accurately represents the drill information.
Site visits	<ul style="list-style-type: none"> Comment on any site visits undertaken by the Competent Person and the outcome of those visits. 	DataGeo visited the site on March 26th 2014 and was able to establish that the drill holes were correctly positioned, the old working and position of the shear was appropriate; the topography was generally flat with fall to the east and a rise existed at the southern central end of the area. Also RC chips, chip trays and diamond core was reviewed to establish the support for the mineralisation.
	<ul style="list-style-type: none"> If no site visits have been undertaken indicate why this is the case. 	not applicable
Geological interpretation	<ul style="list-style-type: none"> Confidence in (or conversely, the uncertainty of) the geological interpretation of the mineral deposit. 	The confidence in the geological interpretation is considered good as it is supported by surface mapping and corroboration of the surface positions with the close spaced drilling. The Penny's Find Shear is a major outcropping feature.
	<ul style="list-style-type: none"> Nature of the data used and of any assumptions made. 	Only physical data obtained in the field was utilised.

	<ul style="list-style-type: none"> • <i>The effect, if any, of alternative interpretations on Mineral Resource estimation.</i> 	The application of hard boundaries to reflect the position of the zones which host the mineralisation is supported by the field and drilling observations. No other interpretation is thought to be appropriate.
	<ul style="list-style-type: none"> • <i>The use of geology in guiding and controlling Mineral Resource estimation.</i> 	The presence of faults and the positioning of the shear and associated foot and hanging wall zones provides the geological control and this combined with presence of gold is used to constrain the interpretation.
	<ul style="list-style-type: none"> • <i>The factors affecting continuity both of grade and geology.</i> 	The higher-grade gold zones occur mostly within the Shear appearing to be sub-parallel to Shear sometimes at the margins of the Shear and sometimes within the central part of the Shear. To the east of the Shear and within the weathered profile there is interpreted to be flat lying supergene style mineralisation. The position and style of mineralisation impacts the grade continuity.
<i>Dimensions</i>	<ul style="list-style-type: none"> • <i>The extent and variability of the Mineral Resource expressed as length (along strike or otherwise), plan width, and depth below surface to the upper and lower limits of the Mineral Resource.</i> 	The main mineralisation within the Deposit occurs over a 500m strike length and extends some 280m down dip and varies between 5 and 10m in width. The deposit remains open at depth.

Estimation	<ul style="list-style-type: none"> <i>The nature and appropriateness of the estimation technique(s) applied and key assumptions, including treatment of extreme grade values, domaining, interpolation parameters and maximum distance of extrapolation from data points. If a computer assisted estimation method was chosen include a description of computer software and parameters used.</i> 	<p>The largest zone which presented the best defined part of the Shear contained in excess of 600 composites and provided a reasonable continuity model which supported the use of ordinary kriging. The composites were top-cut and search restricted. Zones with fewer composites which demonstrated no continuity had grade estimated using inverse distance to the power of 3 to reflect the relatively high nugget within the Deposit demonstrated within the Shear zone. If there were < 10 composites the grade was assigned as the average of the composites. In all cases if appropriate composites were top-cut. Grade estimation was carried out in Vulcan™ application. Density was assigned based on, for fresh rock, representative measurements made from what core was available. For oxidised and partially oxidised material specific gravity was assigned based on results from similar deposits within the general area. 1m composites were created within each zone and input to the grade estimation (or assigning) was restricted to those composites which were within the zone being assessed. Estimated blocks were informed in a three step strategy with orientation set to the orientation of the zone being estimated. The initial (primary) search was 30m x 20m x 5m in strike, dip and across dip-strike plane. This search range was expanded by double the length for blocks were not informed in the primary search and again in the final search strategy. This strategy informed on average 85% of the blocks within the zones to be estimated in the primary and secondary search.</p>
and modelling techniques	<ul style="list-style-type: none"> <i>The availability of check estimates, previous estimates and/or mine production records and whether the Mineral Resource estimate takes appropriate account of such data.</i> 	<p>There is no mining history. The previous model was significantly smaller tonnes and higher grade given the method adopted. Check estimates for the main zone using inverse distance provided a similar result.</p>
	<ul style="list-style-type: none"> <i>The assumptions made regarding recovery of by-products.</i> 	<p>No assumptions made.</p>

	<ul style="list-style-type: none"> <i>Estimation of deleterious elements or other non-grade variables of economic significance (eg sulphur for acid mine drainage characterisation).</i> 	No assessment of deleterious elements has been made.
	<ul style="list-style-type: none"> <i>In the case of block model interpolation, the block size in relation to the average sample spacing and the search employed.</i> 	The block model was constructed using blocks which were 5mE x 10mN x 5mRL with sub-celling to 1/2 the block size in each direction adopted to ensure accurate volume representation. Grade estimation was to the parent block size.
	<ul style="list-style-type: none"> <i>Any assumptions behind modelling of selective mining units.</i> 	not applicable
<i>Estimation</i>	<ul style="list-style-type: none"> <i>Any assumptions about correlation between variables.</i> 	no assessment undertaken
<i>and modelling techniques (continued)</i>	<ul style="list-style-type: none"> <i>Description of how the geological interpretation was used to control the resource estimates.</i> 	Hard boundaries were applied to the Zones. Grade was estimated within these boundaries.
	<ul style="list-style-type: none"> <i>Discussion of basis for using or not using grade cutting or capping.</i> 	Statistical analysis indicated that some zones in particular the largest ones had elevated coefficients of variation and thus to minimise the influence of outlier grades top-cuts were applied, high-grade influence was restricted in some circumstances
	<ul style="list-style-type: none"> <i>The process of validation, the checking process used, the comparison of model data to drill hole data, and use of reconciliation data if available.</i> 	Volume validation was carried out by comparison of the solids representing the mineralisation to the block model. Grade validation was carried by both global comparison of the average estimated grade to the average input grade and spatially by comparison of the estimated grades to the input grades by position. Also visual comparison was used.
<i>Moisture</i>	<ul style="list-style-type: none"> <i>Whether the tonnages are estimated on a dry basis or with natural moisture, and the method of determination of the moisture content.</i> 	The tonnages were estimated using specific gravity determined by weight in air measurements for fresh rock. This data was then assigned to the appropriate positions in the block model. Indicative values were assigned to the weathered profile.

<i>Cut-off parameters</i>	<ul style="list-style-type: none"> <i>The basis of the adopted cut-off grade(s) or quality parameters applied.</i> 	The margin of the mineralisation within the Shear is combination of lithology and grade. Anomalous gold is considered to be the 0.2g/t and above.
<i>Mining factors or assumptions</i>	<ul style="list-style-type: none"> <i>Assumptions made regarding possible mining methods, minimum mining dimensions and internal (or, if applicable, external) mining dilution. It is always necessary as part of the process of determining reasonable prospects for eventual economic extraction to consider potential mining methods, but the assumptions made regarding mining methods and parameters when estimating Mineral Resources may not always be rigorous. Where this is the case, this should be reported with an explanation of the basis of the mining assumptions made.</i> 	A mining scoping study based on the previous model indicated that economic extraction by open cut could occur to 80m below the surface. The details of this assessment are not known to DataGeo but it is assumed that the then mineral resource was optimised using indicative cost structures (2007 to 2009) and gold prices. Such studies reviewed the potential for underground mining.
<i>Metallurgical factors or assumptions</i>	<ul style="list-style-type: none"> <i>The basis for assumptions or predictions regarding metallurgical amenability. It is always necessary as part of the process of determining reasonable prospects for eventual economic extraction to consider potential metallurgical methods, but the assumptions regarding metallurgical treatment processes and parameters made when reporting Mineral Resources may not always be rigorous. Where this is the case, this should be reported with an explanation of the basis of the metallurgical assumptions made.</i> 	Some metallurgical test work to determine gold recovery (both by gravity and cyanide leaching) has occurred which indicates that the recovery would be in excess of 95%. This was based on two very high-grade samples (one of oxide, the other of fresh) which are not representative of the likely open cut mining grade that this deposit could support.

<p><i>Environmental factors or assumptions</i></p>	<ul style="list-style-type: none"> Assumptions made regarding possible waste and process residue disposal options. It is always necessary as part of the process of determining reasonable prospects for eventual economic extraction to consider the potential environmental impacts of the mining and processing operation. While at this stage the determination of potential environmental impacts, particularly for a greenfields project, may not always be well advanced, the status of early consideration of these potential environmental impacts should be reported. Where these aspects have not been considered this should be reported with an explanation of the environmental assumptions made. 	<p>The Deposit is located on a granted mining license. DataGeo is unaware of any studies relating to environmental impacts of a potential mining and processing operation in the location. These are numerous mining and processing operations within 50Km of the site thus it is considered likely that environmental impacts would be manageable.</p>
<p><i>Bulk density</i></p>	<ul style="list-style-type: none"> Whether assumed or determined. If assumed, the basis for the assumptions. If determined, the method used, whether wet or dry, the frequency of the measurements, the nature, size and representativeness of the samples. 	<p>Density has been assumed based on a limited number of core sample measurements using weight in the air and weight in water technique. The results were applied to the appropriate locations in the model. Assumptions were made as the density of the material in the weathered profile.</p>
	<ul style="list-style-type: none"> The bulk density for bulk material must have been measured by methods that adequately account for void spaces (vugs, porosity, etc), moisture and differences between rock and alteration zones within the deposit. 	<p>The rocks do not display significant porosity thus the technique adopted is appropriate.</p>
	<ul style="list-style-type: none"> Discuss assumptions for bulk density estimates used in the evaluation process of the different materials. 	<p>The material is generally fairly uniform as evidenced by the consistency in what specific gravity information is available.</p>

Classification	<ul style="list-style-type: none"> <i>The basis for the classification of the Mineral Resources into varying confidence categories.</i> 	The classification is based on the quality and amount of input data; the spatial arrangement of the drill data and its supported position; the grade continuity for the largest zone and confidence in the geological interpretation which is supported by field observation and drilling. Whilst QAQC information is lacking for the 2007 drilling a comprehensive program for the 2012 drilling was mostly supportive. Higher confidence areas have more supporting data, areas of lower geological support reflect a lower classification.
	<ul style="list-style-type: none"> <i>Whether appropriate account has been taken of all relevant factors (ie relative confidence in tonnage/grade estimations, reliability of input data, confidence in continuity of geology and metal values, quality, quantity and distribution of the data).</i> 	The input data particularly the more recent is consistent and closely spaced enough to support the projection of the geological interpretation at depth which in terms of style of mineralisation is consistent with other deposits within the same or similar geological setting. Later drilling programs have successfully filled earlier programs in mineralised locations predicted by the initial program. The estimated grade correlates reasonably well with the input data given the nature of the mineralisation.
	<ul style="list-style-type: none"> <i>Whether the result appropriately reflects the Competent Person's view of the deposit.</i> 	The Mineral Resource estimate reflects the Competent Persons understanding of the Deposit.
Audits or reviews.	<ul style="list-style-type: none"> <i>The results of any audits or reviews of Mineral Resource estimates.</i> 	None undertaken

Discussion of relative accuracy/ confidence	<ul style="list-style-type: none"> Where appropriate a statement of the relative accuracy and confidence level in the Mineral Resource estimate using an approach or procedure deemed appropriate by the Competent Person. For example, the application of statistical or geostatistical procedures to quantify the relative accuracy of the resource within stated confidence limits, or, if such an approach is not deemed appropriate, a qualitative discussion of the factors that could affect the relative accuracy and confidence of the estimate. 	<p>The mineral resource is volume constrained by the geological interpretation thus in a global sense there is no sensitivity. As would be expected there is sensitivity to the estimated resource grade related to be the top-cut applied with indication that grade could be influenced by 10 to 15% in the main mineralised zone. Whilst DataGeo is comfortable with the top-cut applied (based on what appears to be a distinct change in population statistics) the influence of the higher-grade needs additional review. The confidence in the mineral resource is defined by the classification adopted as per the guidelines of the 2012 JORC code.</p>
	<ul style="list-style-type: none"> The statement should specify whether it relates to global or local estimates, and, if local, state the relevant tonnages, which should be relevant to technical and economic evaluation. Documentation should include assumptions made and the procedures used. 	<p>The statement relates to global estimates of tonnes and grade.</p>
	<ul style="list-style-type: none"> These statements of relative accuracy and confidence of the estimate should be compared with production data, where available. 	<p>not applicable</p>