



## Presentation – Exploration results and plan

- **Recent Seimana Gold Project drilling results**
  - 3m @ 4.4g/t from 18m
  - 2m @ 7.0g/t from 44m
  - 5m @ 1.9g/t from 65m including 2m @ 3.7g/t
  - 1m @ 8.8 g/t from 20m
- **Sulitjelma Copper Zinc Project – 6 targets confirmed**
- **Plans for Seimana, Sulitjelma and Granmuren (Bergslagen)**

Drake Resources has released a presentation elaborating on recent exploration results and exploration plans. This includes the previously unannounced EM program planned for Bergslagen – Sweden.

The Presentation can be accessed from Drake's website, [www.drakeresources.com.au](http://www.drakeresources.com.au). A copy of the presentation follows.

### **August EM program planned over Bergslagen nickel targets.**

Drake has commenced planning for a relatively inexpensive but potentially very valuable EM program over priority targets in Bergslagen to explore for repeats of its Granmuren greenfield nickel discovery in the region.

Granmuren is a substantial intrusion of massive and disseminated sulphides and conforms to a classic Ni-Cu (+/- PGE) system dated as being from a period of the Earth's history that generated significant nickel mines such as Thompson, Raglan and Sudbury nickel mines in Canada. This style of mineralisation tends to occur in clusters and Drake is fortunate to be sitting on many prospective targets in this potential nickel province (fig 1). The EM program will test some of the Company's targets in the region.

### **Drake has commenced planning for Sulitjelma Field Program**

A field sampling program at specific targets generated from the recently completed VTEM and EM surveys will commence in July. It is hoped drilling will occur later in 2015.

### **Seimana Gold Air –Magnetic and Radiometrics**

Drake is looking into the possibility of flying geophysics over its large Seimana footprint to identify potential areas of large, gold bearing vein networks typical of larger discoveries of the Birrimian.

### **For further information, please contact:**

#### **Mr Jason Stirbinskis**

CEO, Drake Resources

+61 (0)8 6141 3585

[info@drakeresources.com.au](mailto:info@drakeresources.com.au)

#### **Mr Jay Stephenson**

Company Secretary, Drake Resources

+61 (0)8 6141 3585

[info@drakeresources.com.au](mailto:info@drakeresources.com.au)

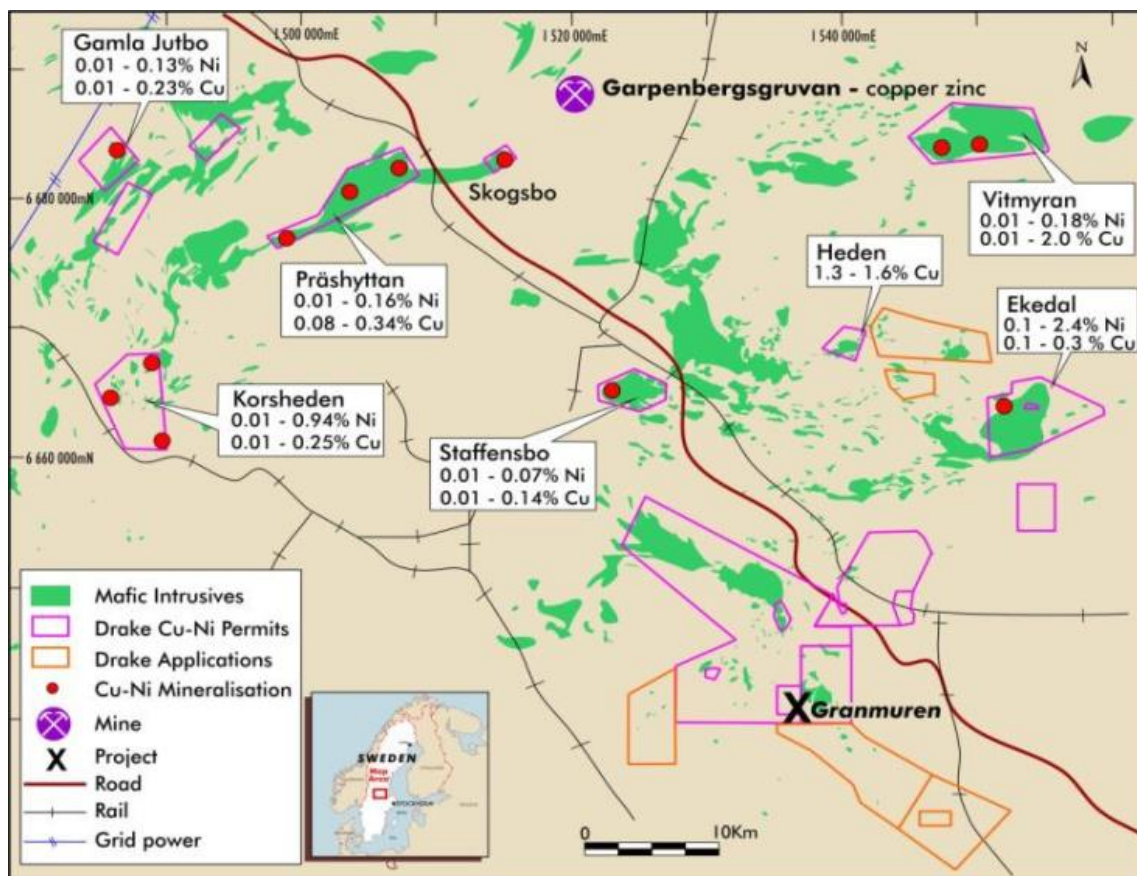


Figure One: A subsection of Drake's licences in Bergslagen-Sweden and the location of the Company's Granmuren nickel discovery.

### Competent Persons Statement

The information related to Seimana exploration results is extracted from the reports entitled "Seimana 2015 Drill Results" created on 12/6/15, and is available to view on [www.drakeresources.com.au](http://www.drakeresources.com.au). The company confirms that it is not aware of any new information or data that materially affects the information included in the original market announcements. The company confirms that the form and context in which the Competent Person's findings are presented have not been materially modified from the original market announcements.

**Caution Regarding Forward Looking Information.** This document contains forward looking statements concerning Drake. Forward-looking statements are not statements of historical fact and actual events and results may differ materially from those described in the forward looking statements as a result of a variety of risks, uncertainties and other factors. Forward-looking statements are inherently subject to business, economic, competitive, political and social uncertainties and contingencies. Many factors could cause the Company's actual results to differ materially from those expressed or implied in any forward-looking information provided by the Company, or on behalf of, the Company. Such factors include, among other things, risks relating to additional funding requirements, metal prices, exploration, development and operating risks, competition, production risks, regulatory restrictions, including environmental regulation and liability and potential title disputes. Forward looking statements in this document are based on Drake's beliefs, opinions and estimates of Drake as of the dates the forward looking statements are made, and no obligation is assumed to update forward looking statements if these beliefs, opinions and estimates should change or to reflect other future development.





# Disclaimer & Competent Persons Statement

*This presentation has been prepared to provide information on Drake Resources Limited's projects. It is not intended as an offer, invitation solicitation or recommendation with respect to the purchase or sale of any securities. This presentation should not be relied upon as the sole representation of any matter that a potential investor should consider in evaluating Drake. Its affiliates or any of its directors, agents, officers or employees do not make any representation or warranty, express or implied, as to or endorsement of, the accuracy or completeness of any information, statements, representations or forecasts contained in this presentation, and they do not accept any liability for any statement made in, or omitted from, this presentation. Prospective investors should make their own independent evaluation of an investment in the Company.*

## **Caution Regarding Forward Looking Information.**

*This document contains forward looking statements concerning Drake. Forward-looking statements are not statements of historical fact and actual events and results may differ materially from those described in the forward looking statements as a result of a variety of risks, uncertainties and other factors. Forward-looking statements are inherently subject to business, economic, competitive, political and social uncertainties and contingencies. Many factors could cause the Company's actual results to differ materially from those expressed or implied in any forward-looking information provided by the Company, or on behalf of, the Company. Such factors include, among other things, risks relating to additional funding requirements, metal prices, exploration, development and operating risks, competition, production risks, regulatory restrictions, including environmental regulation and liability and potential title disputes. Forward looking statements in this document are based on Drake's beliefs, opinions and estimates of Drake as of the dates the forward looking statements are made, and no obligation is assumed to update forward looking statements if these beliefs, opinions and estimates should change or to reflect other future developments*

## **Competent Persons Statement**

*The information related to Seimana exploration results is extracted from the reports entitled "Final Drill Results – Seimana Gold Project" created on 30/7/14 and "Seimana 2015 Drill Results" created on 12/6/15, both reports are available to view on [www.drakeresources.com.au](http://www.drakeresources.com.au). The information related to Sulitjelma exploration results is extracted from the report entitled "Sulitjelma EM Results" created on 4/6/15 and "Surface Samples above VTEM anomaly return high grade copper and zinc – Sulitjelma" created on 5/11/14, both reports are available to view on [www.drakeresources.com.au](http://www.drakeresources.com.au). The company confirms that it is not aware of any new information or data that materially affects the information included in the original market announcements. The company confirms that the form and context in which the Competent Person's findings are presented have not been materially modified from the original market announcements.*

*The information related to Granmuren exploration results is extracted from the report titled "Granmuren Final Results adds deeper Ni/Cu mineralisation" created on 28/5/13 and is available to view on [www.drakeresources.com.au](http://www.drakeresources.com.au). The information related to Joma exploration results is extracted from the report titled "Joma EM results confirm prospective targets" created on 5/9/13 and is available to view on [www.drakeresources.com.au](http://www.drakeresources.com.au). The company confirms that it is not aware of any new information or data that materially affects the information included in the original market announcements. The company confirms that the form and context in which the Competent Person's findings are presented have not been materially modified from the original market announcement. This information was prepared and first disclosed under the JORC code 2004. It has not been updated to comply with the JORC Code 2012 on the basis that the information has not materially changed since it was reported*

Target	Hole	From (m)	To (m)	Width (m)	Gold (g/t)
Kroudaoulen	KRDRC01	34	35	1	3.0
	KRDRC02	18	25	7	2.6
	incl	22	25	3	5.1
		66	69	3	3.5
	15KRDRC04	18	21	3	4.4
	15KRDRC05	48	49	1	1.0
		54	56	2	1.1
		62	63	1	1.0
		74	75	1	1.3
		83	84	1	1.3
Tamdian	TAMRC001	50	54	4	19.8
	incl	51	52	1	52.6
	TAMRC002	34	41	7	1.6
	incl	40	41	1	8.1
		59	67	8	1.8
	incl	61	66	5	2.6
	15TAMRC004	38	40	2	1.8
		44	46	2	7.0
	15TAMRC005	70	70	1	1.1
	15TAMRC006	48	49	1	1.4
Bananikoro		65	70	5	1.9
	incl	67	69	2	3.7
	incl	68	69	1	6.1
	15BANRC01	56	57	1	4.2
		67	70	3	1.3
	15BANRC02	20	21	1	8.8
Kroufilate	KROUFR01	36	46	10	2.6
	KROUFR02	55	69	14	1.7
	incl	55	60	5	2.0
		66	69	3	3.5
	15KRFRC03	3	4	1	1.7
	15KRFRC04	30	31	1	1.1
		32	33	1	1.4
Bougnegbesse	15BOURC02	11	12	1	1.2
Kotromakolen	KOTRC001	26	29	3	5.6
	incl	29	30	1	16.0
		39	40	1	3.9
	KOTRC002	29	30	1	1.2
		48	49	1	1.0

Table 1: Seimana Significant Drill Results referenced in presentation



# Limited drilling delivers extensive mineralisation

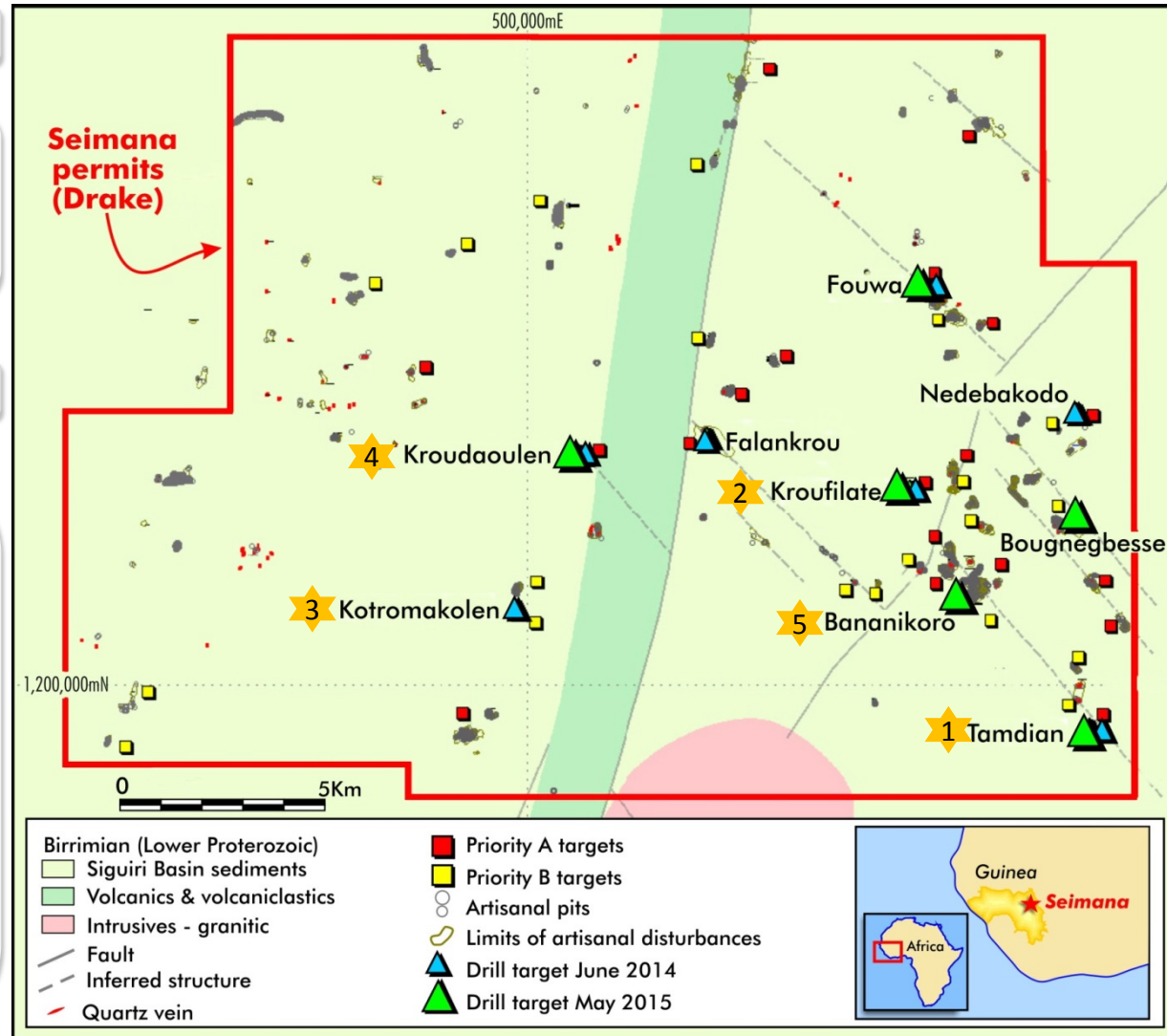
## Seimana Gold Prospect

2014 Surface sampling

Up to 70g/t gold  
In 40 clusters  
across 18 kms

2014/2015 RC drilling

- ★ 4m @ 19.8g/t  
7m @ 1.6g/t and 5m @ 2.6g/t  
2m @ 7.0g/t  
2m @ 3.7g/t
- ★ 10m @ 2.6g/t  
5m @ 2.0g/t and 3m @ 3.5g/t
- ★ 3m @ 5.6g/t inc 1m @ 16.0g/t
- ★ 3m @ 5.1g/t and 3m @ 3.5g/t  
3m @ 4.4g/t
- ★ 1m @ 4.2g/t  
1m @ 8.8g/t



See slide 2 for intersection details

# Right Neighbourhood – our multi Moz neighbours

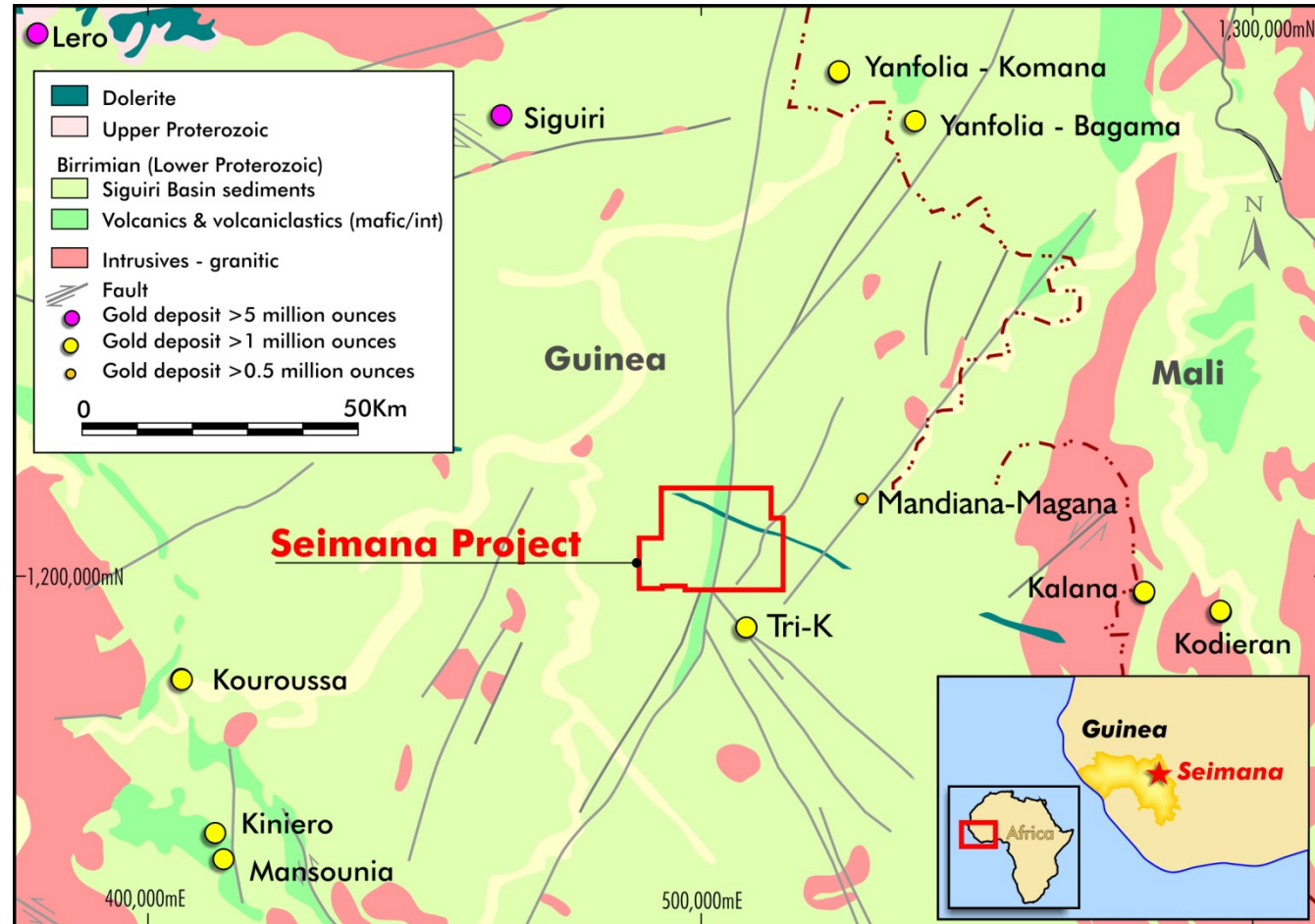
## Immediate neighbours

Tri-K 3+Moz  
7kms away

Mandiana Magana  
0.5Moz  
12kms away

## Regional

Lero/Lefa	5+ Moz
Sigui	5+ Moz
Yanfolia	3+ Moz
Kalana	2Moz
Kodieran	2Moz
Kiniero	1Moz
Kouroussa	1+ Moz
Mansounia	1+ Moz



Next Steps: Planning for Air-magnetics to find areas of potential large gold bearing vein networks typical of our neighbours

# Sulitjelma Copper Zinc

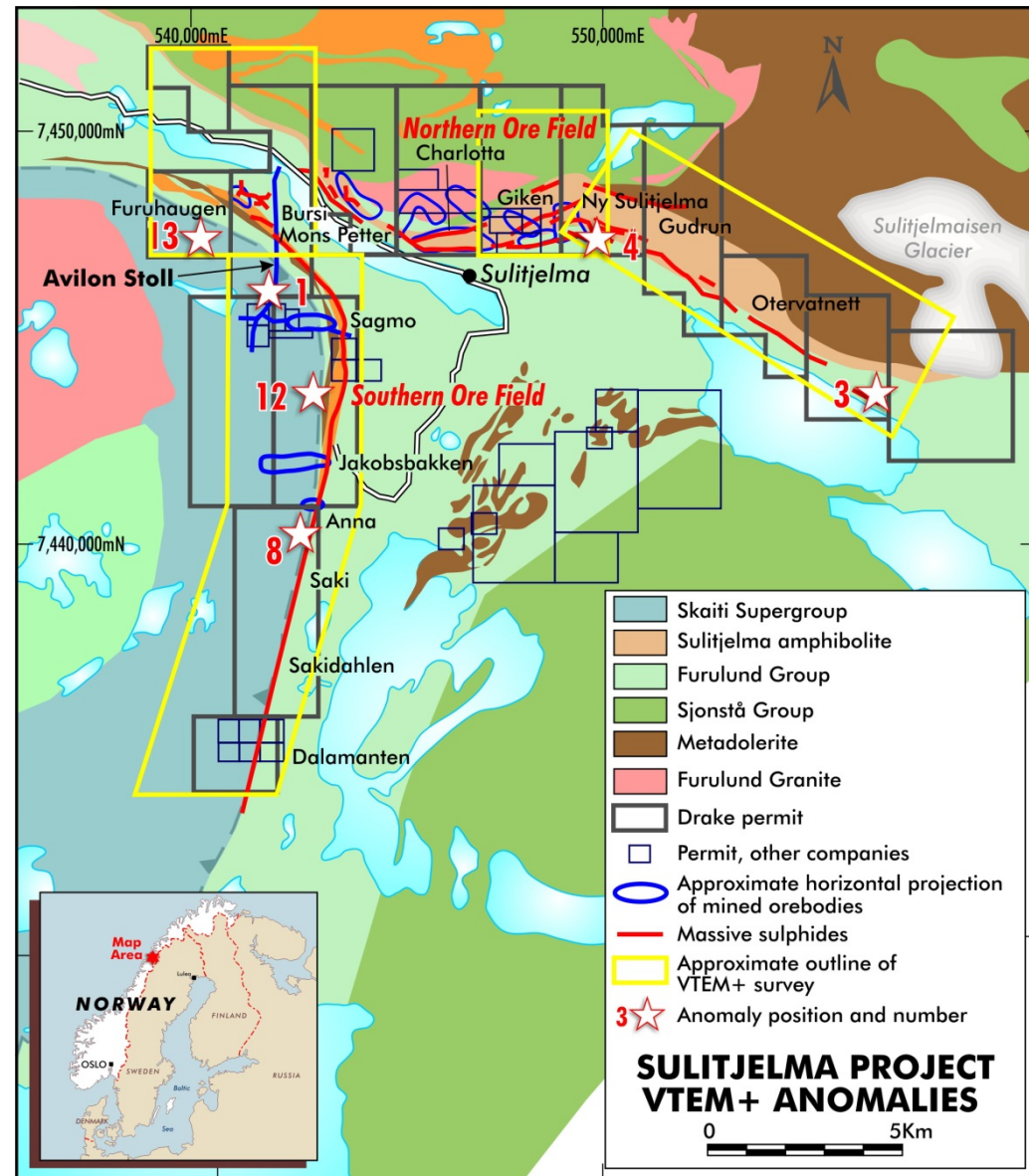
## PAN JV Asset<sup>1</sup> Progress

2014 VTEM and 2015 EM  
6 priority Cu/Zn targets  
Surface samples inc  
10%Cu, 15%Zn  
July '15 field program prior to  
planning for drilling

## Regional

Western Arm massive  
sulphides 10km  
Eastern Arm EM conductor  
5kms long  
Past Production 25Mt of Cu  
ore from multiple mines

1: Under the JV terms, Panoramic has the right to sole-fund exploration to earn a 70% interest in the project.



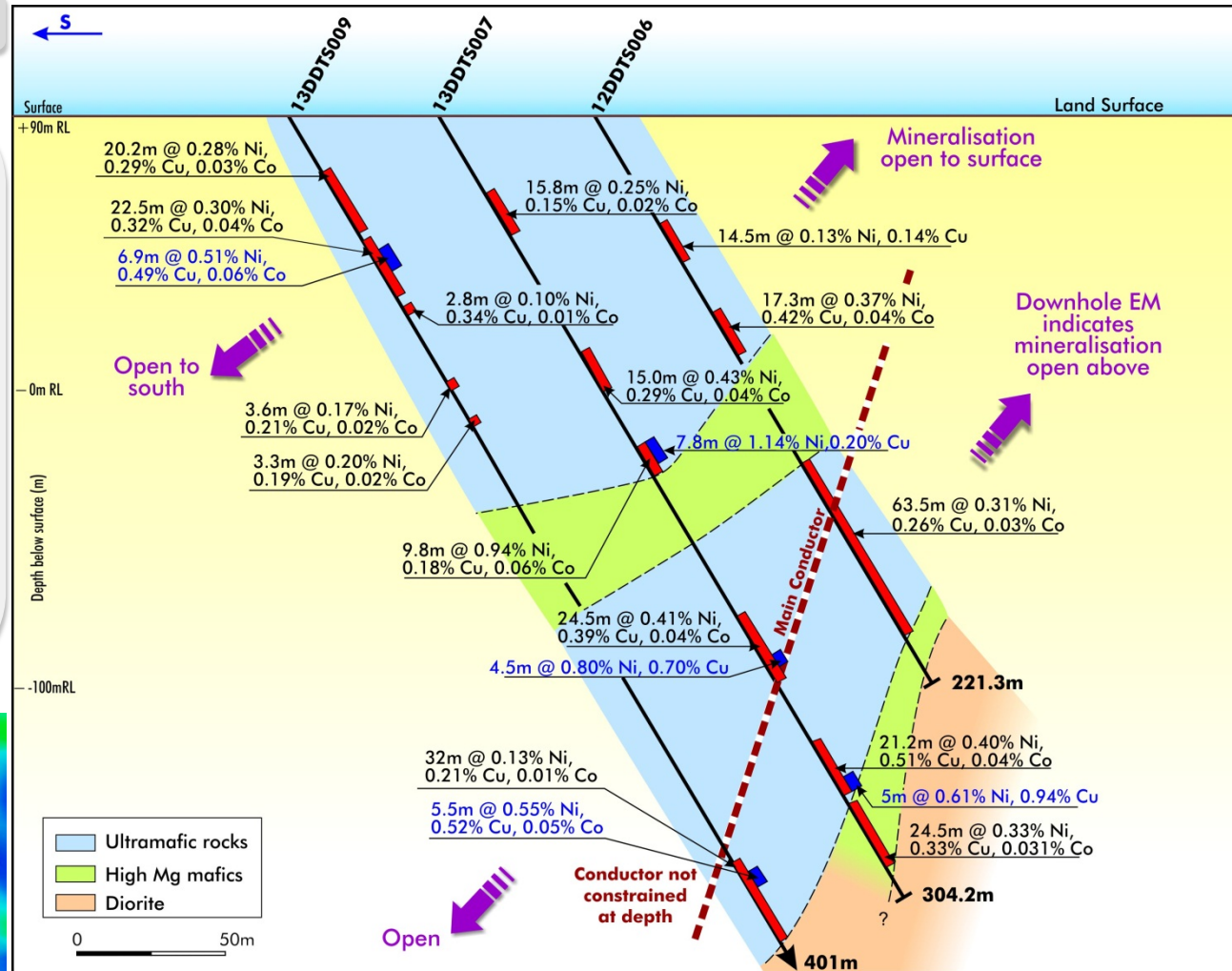
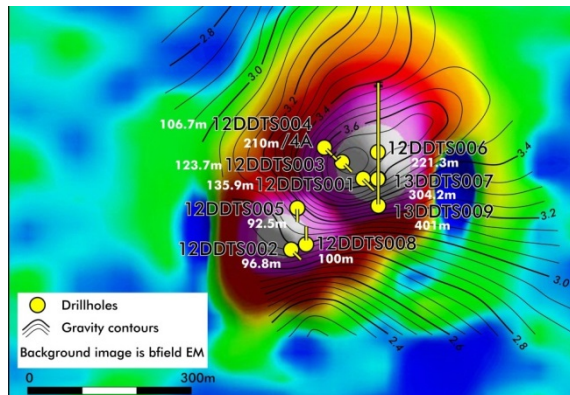


# Granmuren Nickel Discovery -Sweden

## Granmuren Deposit

Nickel / copper massive and disseminated sulphides from surface to +300m

Open all directions, Long intercepts of low grade, higher grade at depth  
Grades comparable to open pit nickel mines of the Nordic region





# Granmuren Nickel Province

drake resources

## Regional - Bergslagen

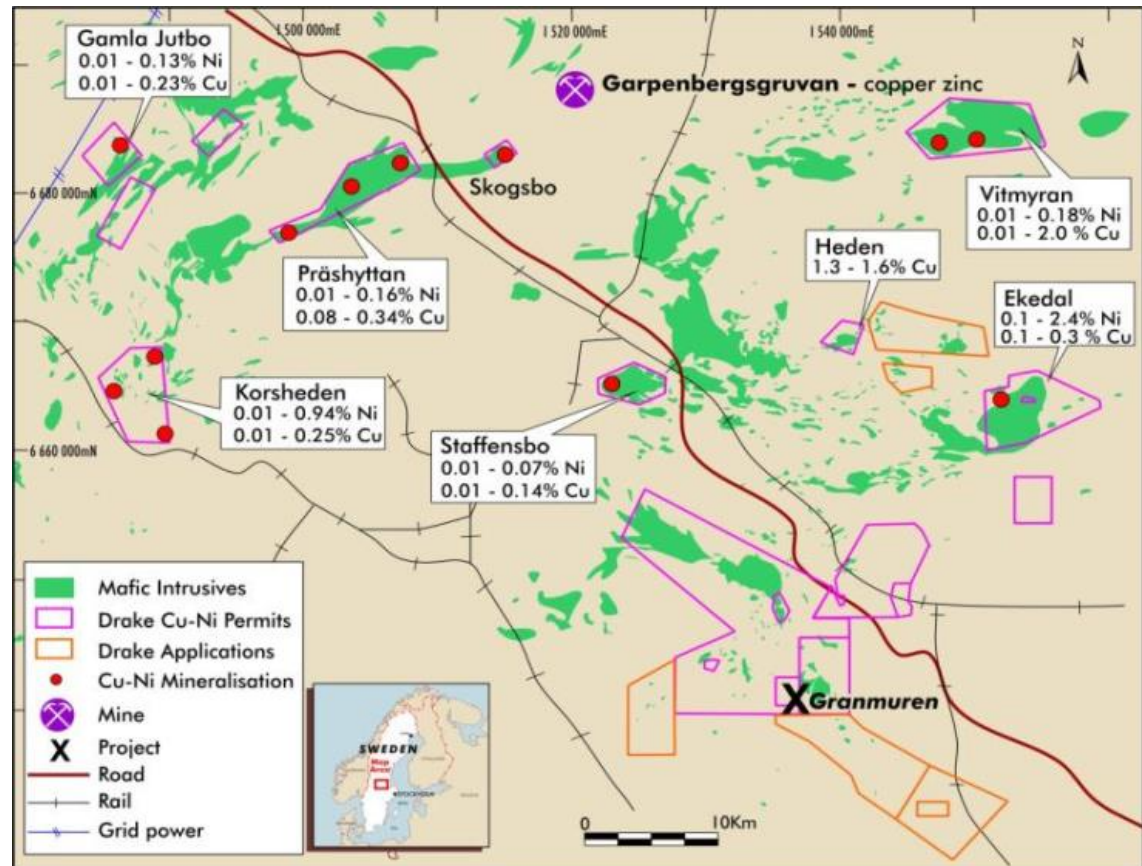
1000 years, 6000 deposits  
BIF, Skarn, Base Metals and  
REE

Eg. Garpenberg polymetallic  
and Sala silver

## Drake's Regional Footprint

Numerous magmatic Ni-Cu  
occurrences – 100% Drake  
Correlates with global nickel  
deposit forming era eg  
Thompson, Raglan, Sudbury,  
Kotalahti

Next Steps  
EM at priority targets



“The combination of these aspects, and the demonstrated presence of numerous magmatic Ni-Cu occurrences within Bergslagen, all point to the area having potential for the region to contain a world-class Ni camp”.

**Drake controls this potential Nickel Province!**

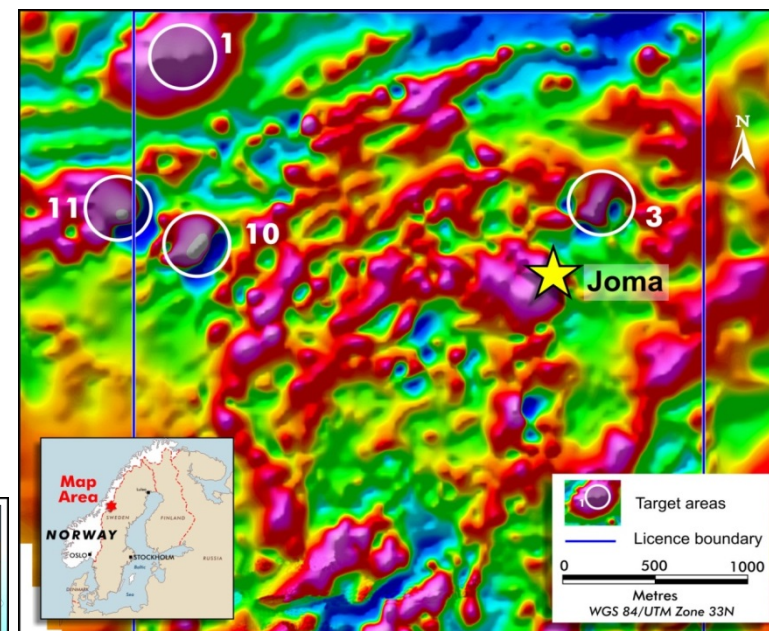
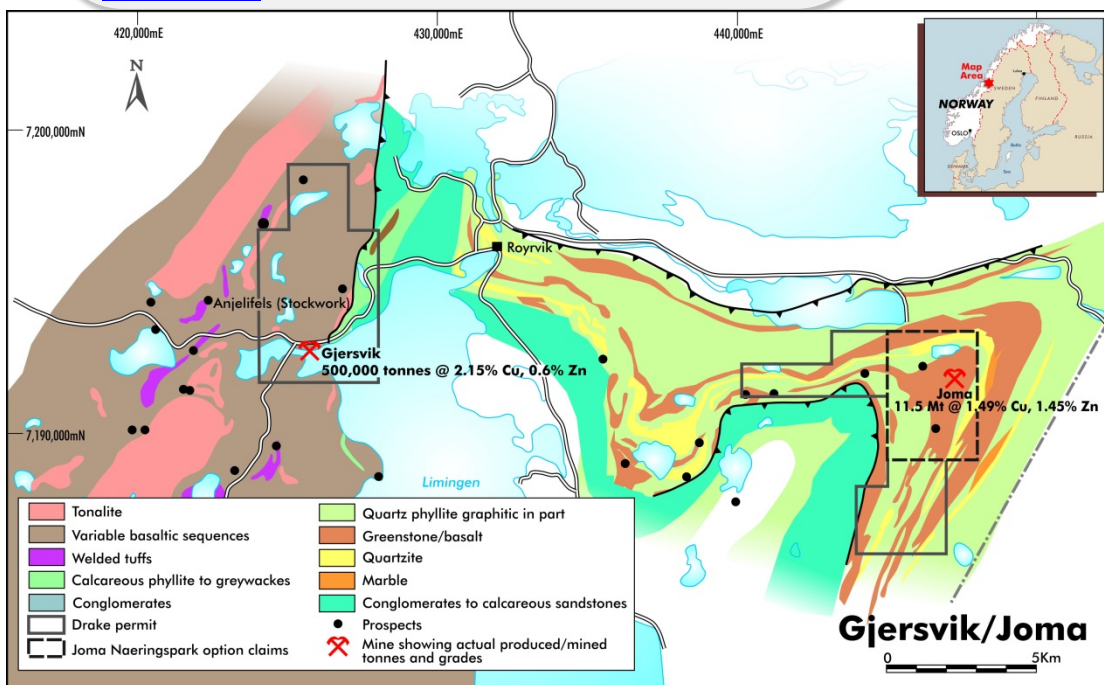
# Joma Copper Zinc - Norway

## Joma Mine

Possibility of near term production via recommissioning of old operations

Joma Mine Exploration target -

<http://drk.live.irmau.com/IRM/Company/ShowPage.aspx/PDFs/1417-29785341/HighgradecopperreturnedfromcheckassaysatJoma>



## Joma Region

Drake - 51km<sup>2</sup> of under explored Koli Copper/Zinc complex  
25 known Cu/Zn deposits in the region