



Unlocking Victoria's Copper-Gold Potential

June 2015

Disclaimer

This presentation contains only an overview of Stavely Minerals Limited (“Stavely” or the “Company”) and its activities and operations. The contents of this presentation, including matters relating to the geology and exploration potential of the Company’s projects, may rely on various assumptions and subjective interpretations which it is not possible to detail in this presentation and which have not been subject to any independent verification.

This presentation contains a number of forward-looking statements. Known and unknown risks and uncertainties, and factors outside of the Company’s control, may cause the actual results, performance and achievements of the Company to differ materially from those expressed or implied in this presentation.

To the maximum extent permitted by law, Stavely does not warrant the accuracy, currency or completeness of the information in this presentation, nor the future performance of the Company, and will not be responsible for any loss or damage arising from the use of the information.

The information contained in this presentation is not a substitute for detailed investigation or analysis of any particular issue. Current and potential investors should seek independent advice before making any investment decision in regard to the Company or its activities.

STAVELY MINERALS



ASX Code – SVY

Share Price - \$0.29

Cash (31/03/15) - \$0.95M*

*Excludes Titeline Drilling agreement**

Shares on Issue – 80.8M

Market Cap - \$23.4M

Directors

Bill Plyley

Non-executive Chairman

Chris Cairns

Managing Director

Jennifer Murphy

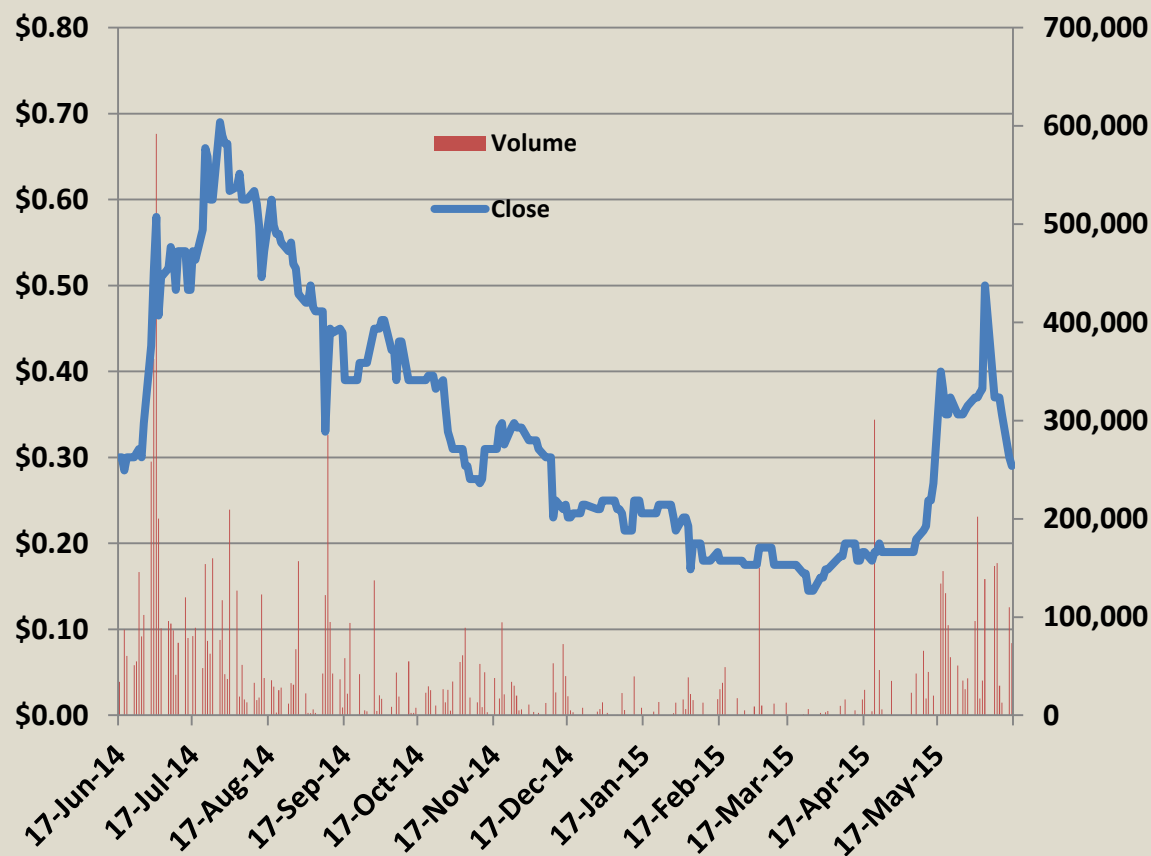
Technical Director

Peter Ironside

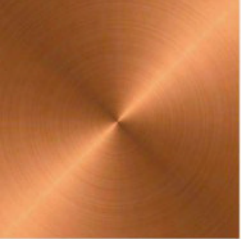
Non-executive Director

Amanda Sparks

Company Secretary

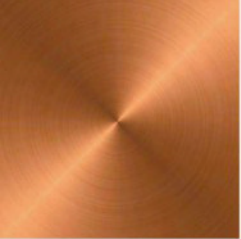


*\$2m share subscription agreement with Titeline Drilling Pty Ltd announced to the ASX on 7 October 2014



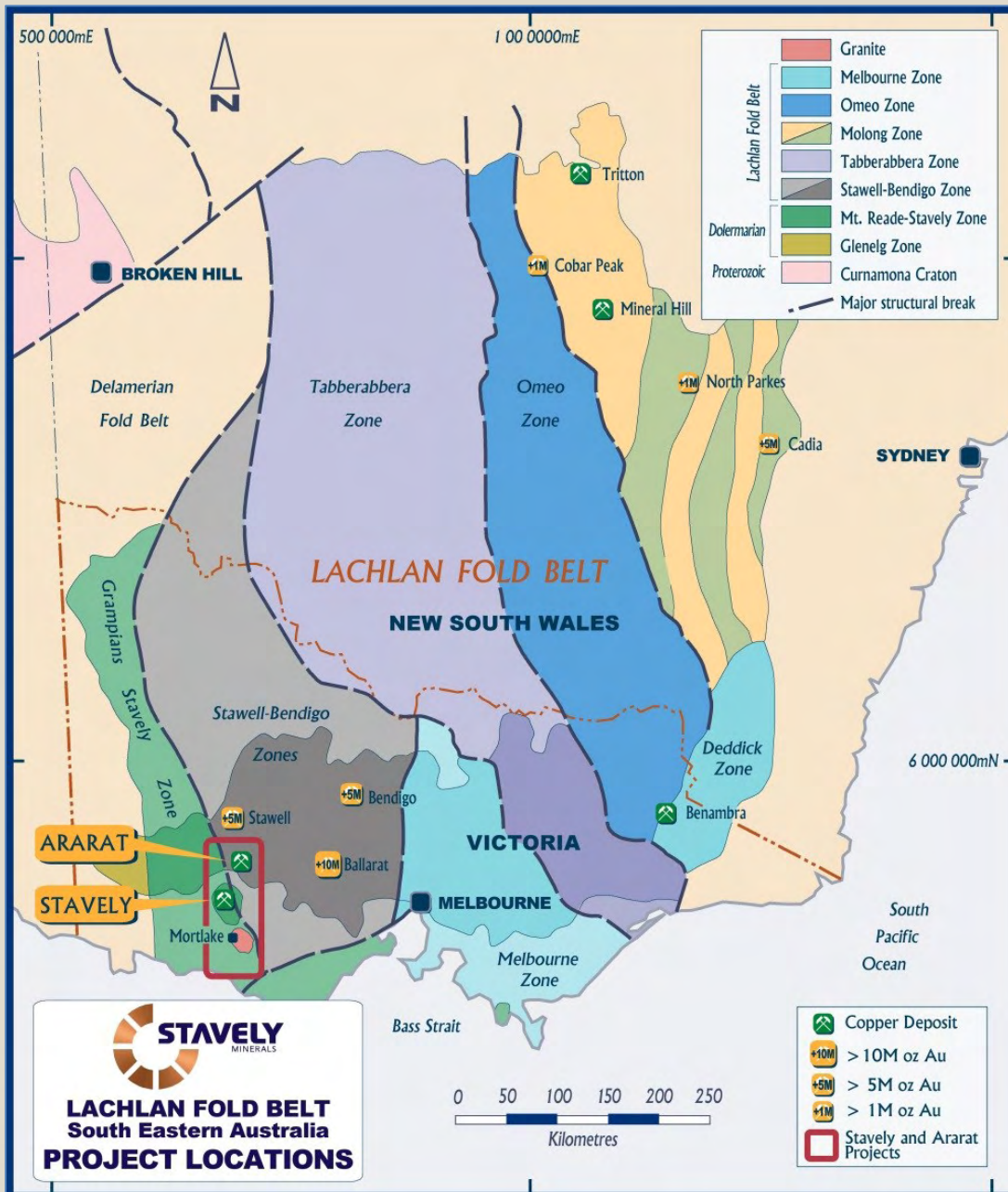
OUR STRATEGY

1. Acquire copper-gold / base metals projects with quality Mineral Resources with two key attributes:
 - i. The known mineralisation is not sufficient to develop
 - ii. There is excellent exploration upside
2. Implement an intensive exploration programme to discover further mineralisation / add to the Mineral Resources
3. When the project has sufficient Mineral Resources defined to an appropriate level of confidence, commence scoping / feasibility studies towards demonstrating the economic case for development
4. Develop the asset



PROJECTS

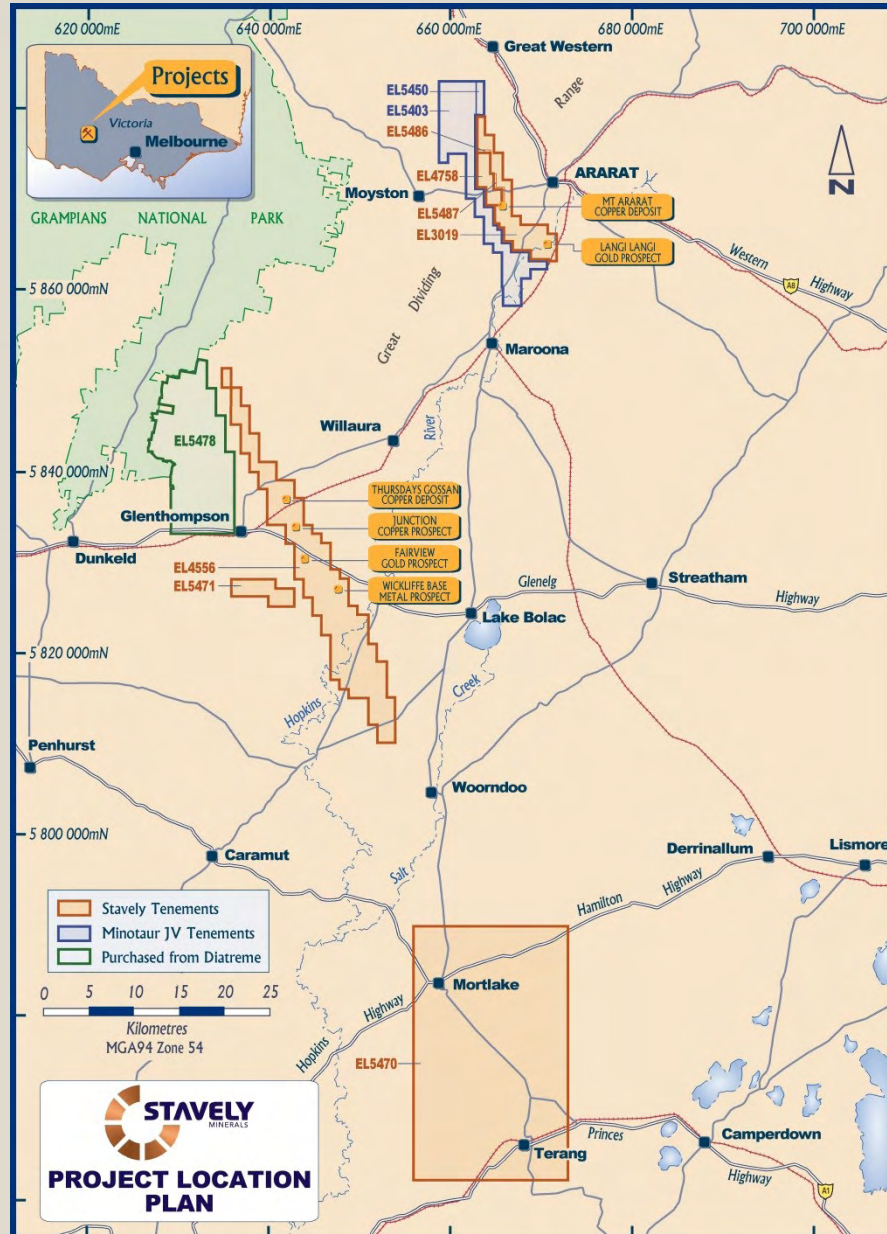
PROJECT LOCATION



The Ararat Project is in the Moornambool Metamorphic Complex and is prospective for VMS base metals-gold and 'Stawell-style' gold mineralisation.

The Mount Stavely Volcanic Complex is prospective for ancient porphyry copper-gold, VMS base metals-gold and intrusive related gold mineralisation.

PROJECT LOCATION



900 square kilometres of
Stavely Minerals tenure

70 square kilometres of
JV tenure

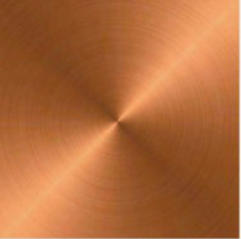
At the Ararat Project, hosted in Besshi-style VMS:

- Inferred Mineral Resources of 1.2Mt at 2.0% copper, 0.5 g/t gold, 0.4% zinc and 6 g/t silver for 30kt of contained copper

At the Stavely Project hosted in a secondary chalcocite-enriched blanket:

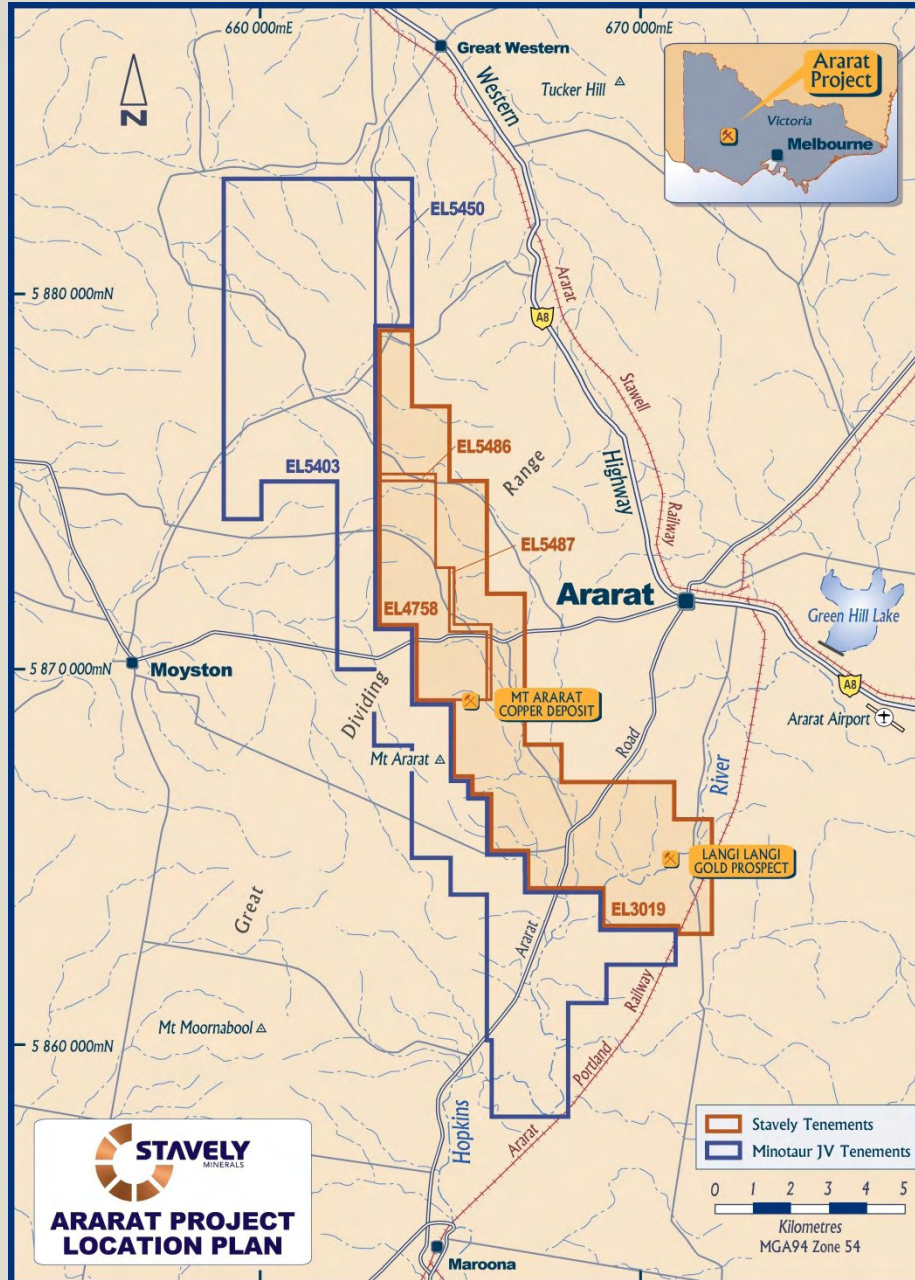
- Inferred Mineral Resources of 28Mt at 0.4% copper for 110kt of contained copper

¹ reported in compliance with JORC 2012, see Stavely Minerals Prospectus dated 26 March 2014 and available from www.stavely.com.au



ARARAT PROJECT

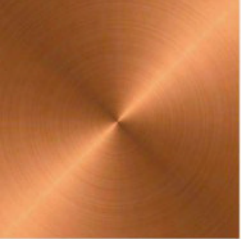
ARARAT PROJECT



Hosts the:

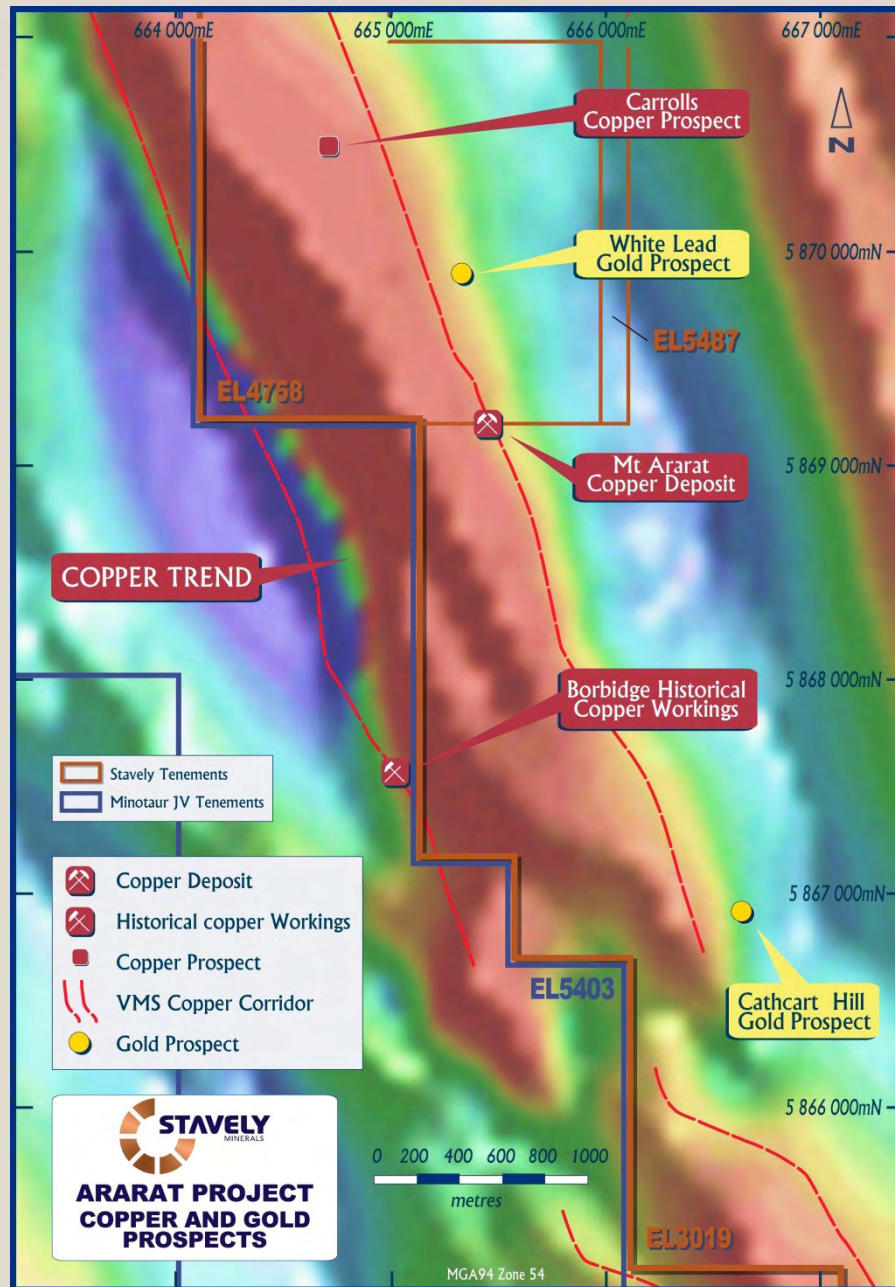
Mt Ararat Besshi-style
copper-gold VMS

and 'Stawell-style' gold
targets



MOUNT ARARAT VMS

ARARAT PROJECT

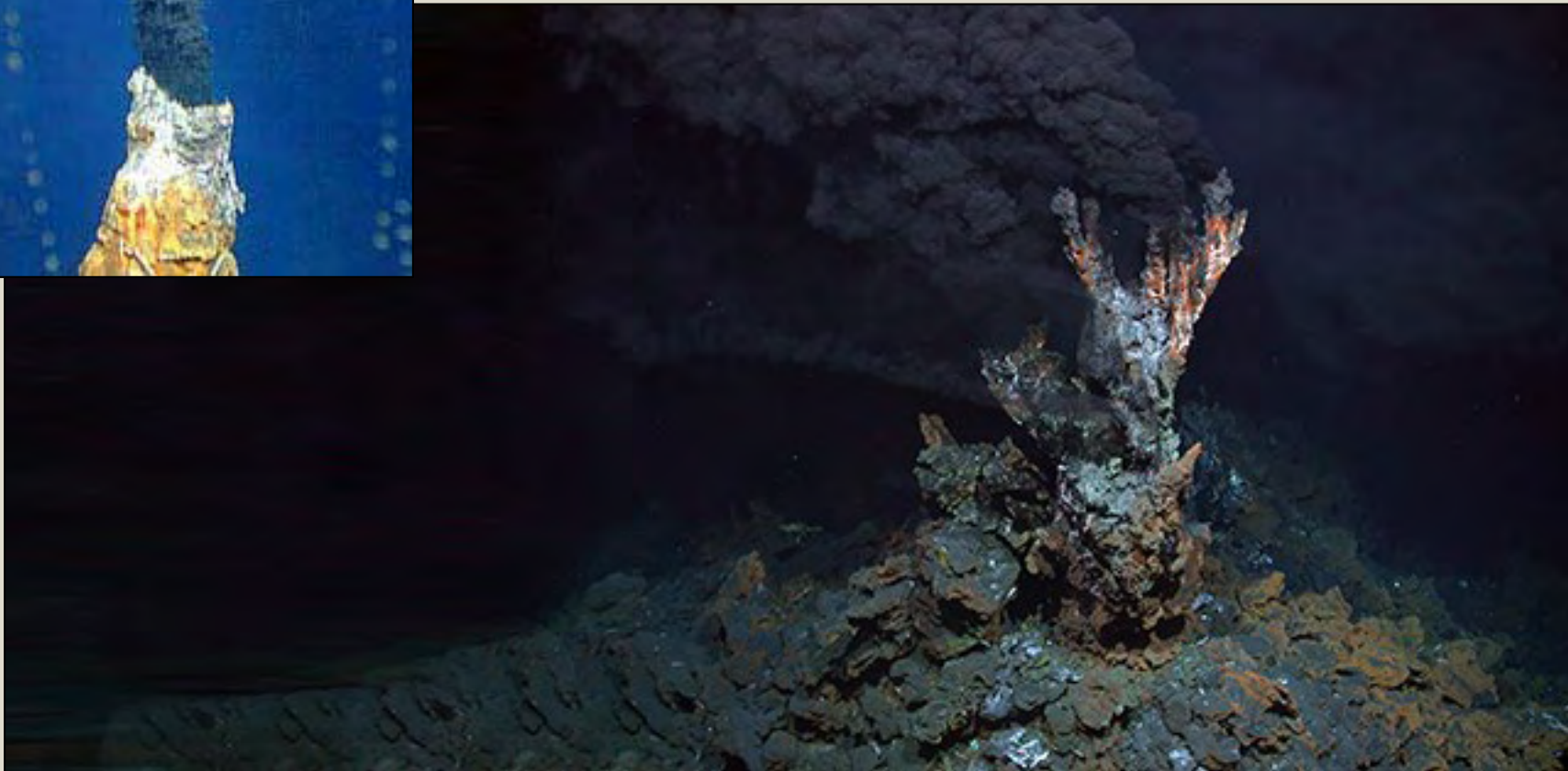


- ✓ Prospective VMS copper gold horizon extends over 15 kilometres within Stavely Minerals tenements.
- ✓ Recent reconnaissance exploration has confirmed the horizon is up to 1km wide
- ✓ 'Stawell-style' gold / arsenic anomalies along 4-5km of strike and open to north and south

ARARAT PROJECT



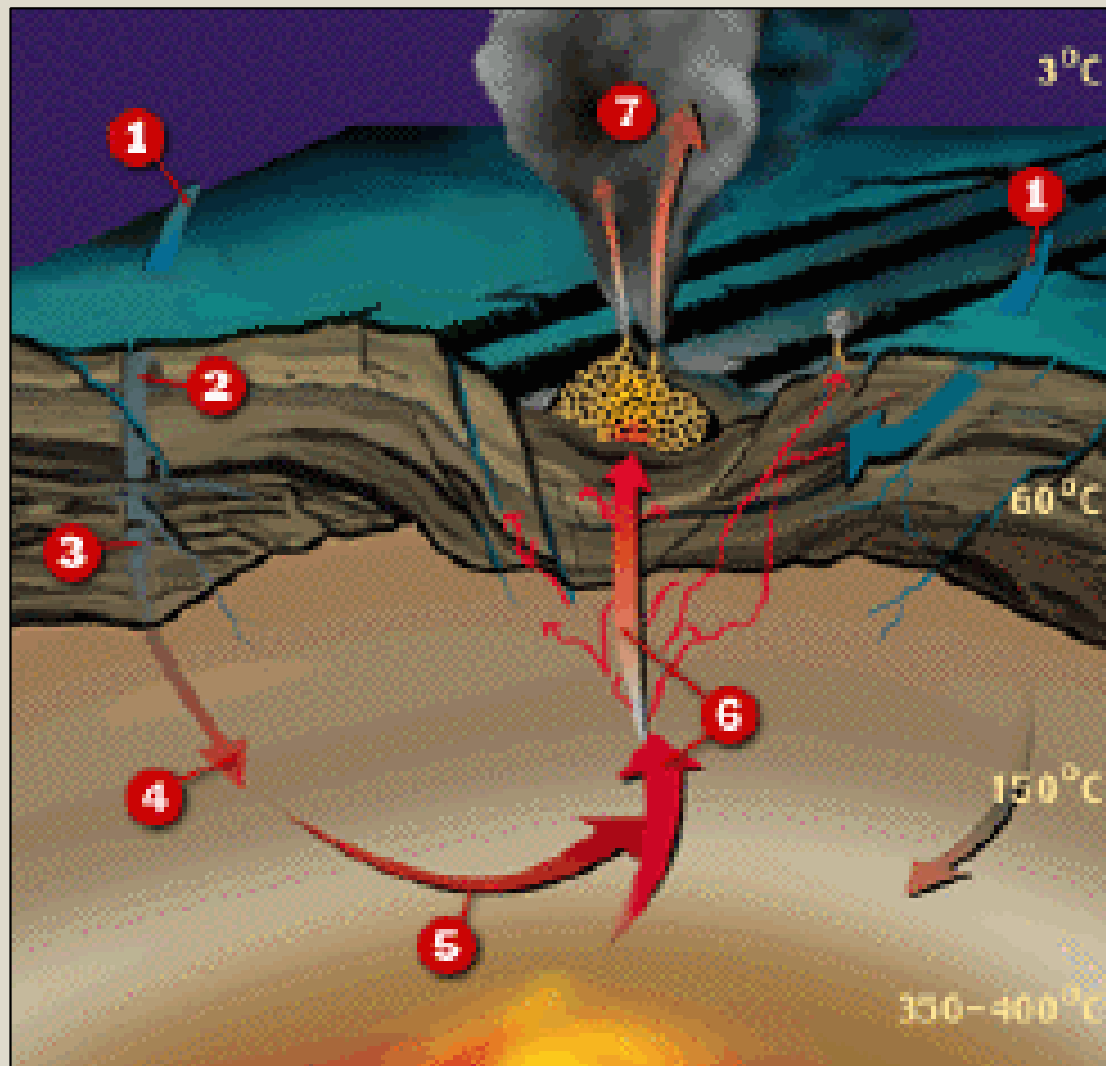
Mt Ararat Besshi-style copper-gold VMS is an ancient sea-floor 'black smoker'



ARARAT PROJECT



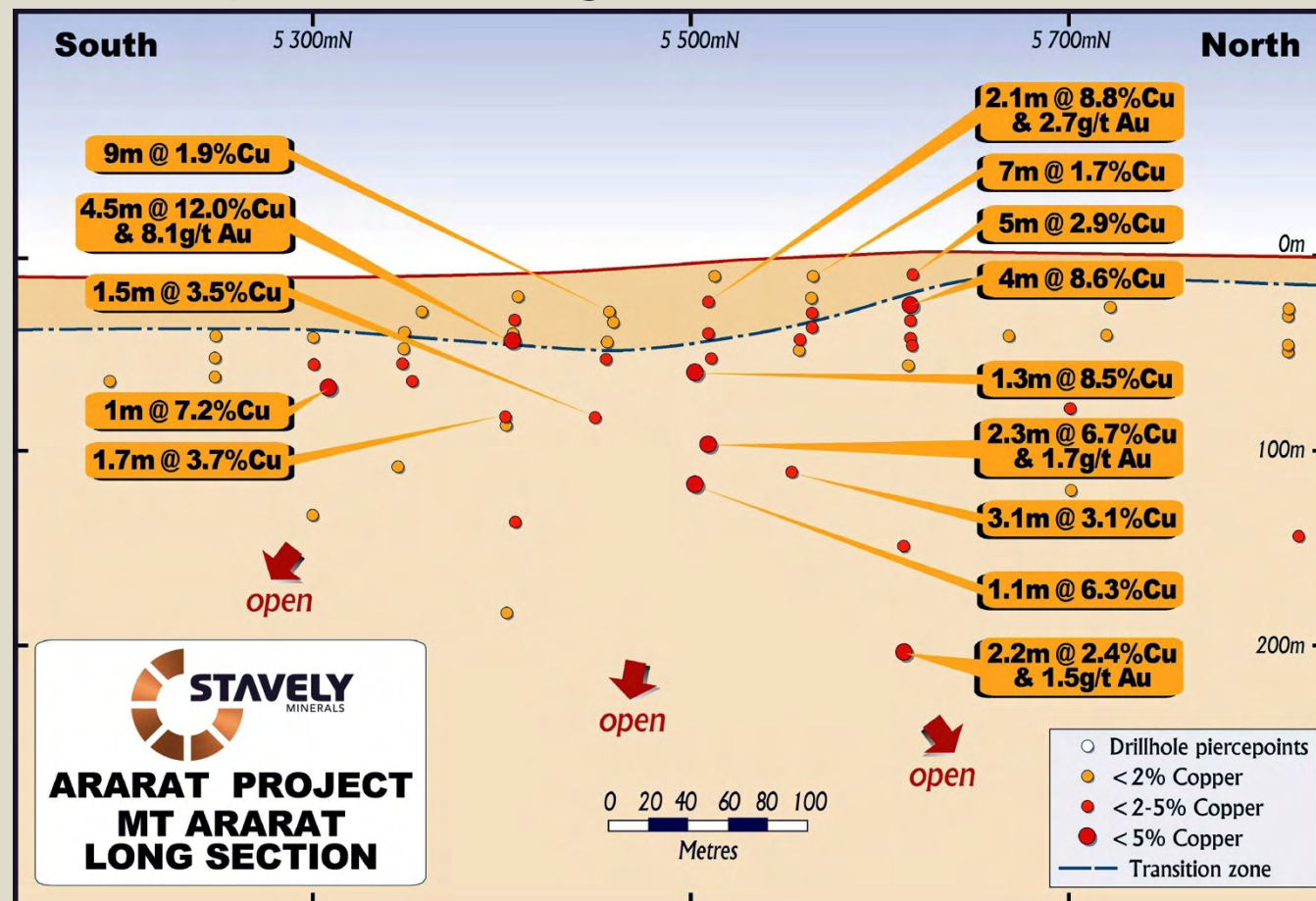
Mt Ararat Besshi-style copper-gold VMS is an ancient sea-floor 'black smoker' – they tend to occur in clusters of typically 6-8 deposits



ARARAT PROJECT



- Mt Ararat Besshi-style VMS – Inferred Mineral Resource of 1.2Mt at 2.0% copper, 0.5g/t gold, 0.4% zinc and 6g/t silver
- The Degruusa deposit is considered a Besshi-style VMS
- Open at depth and along strike



Recent RC drilling results¹ from northern extensions to the Mt Ararat Mineral Resource:

- 5m at 2.10% copper, 0.56 g/t gold, 0.48% zinc and 9 g/t silver, including
 - 2m at 3.37% copper, 0.73 g/t gold, 0.47% zinc and 14 g/t silver
- 3m at 2.64% copper, 0.17 g/t gold, 0.31% zinc and 3 g/t silver
- 1m at 5.89% copper, 0.55 g/t gold, 2.31% zinc and 17 g/t silver

At the Carroll's prospect, new zones of mineralisation recently identified in soil sampling.

¹ see ASX announcement dated 10 September 2014 and available from www.stavely.com.au

ARARAT PROJECT



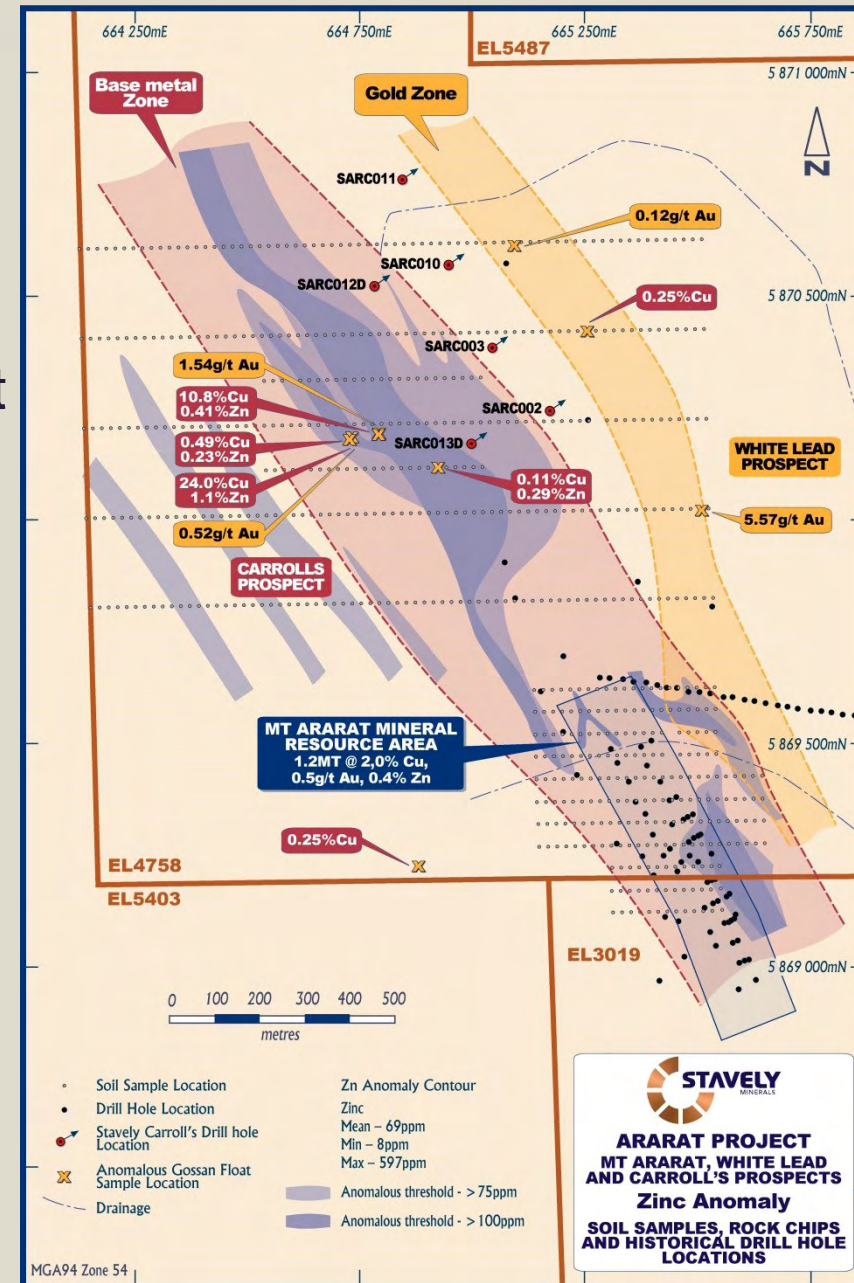
Carroll's Prospect

Multiple mineralised horizons confirmed with Carroll's Copper prospect re-discovered with rock-chip results including:

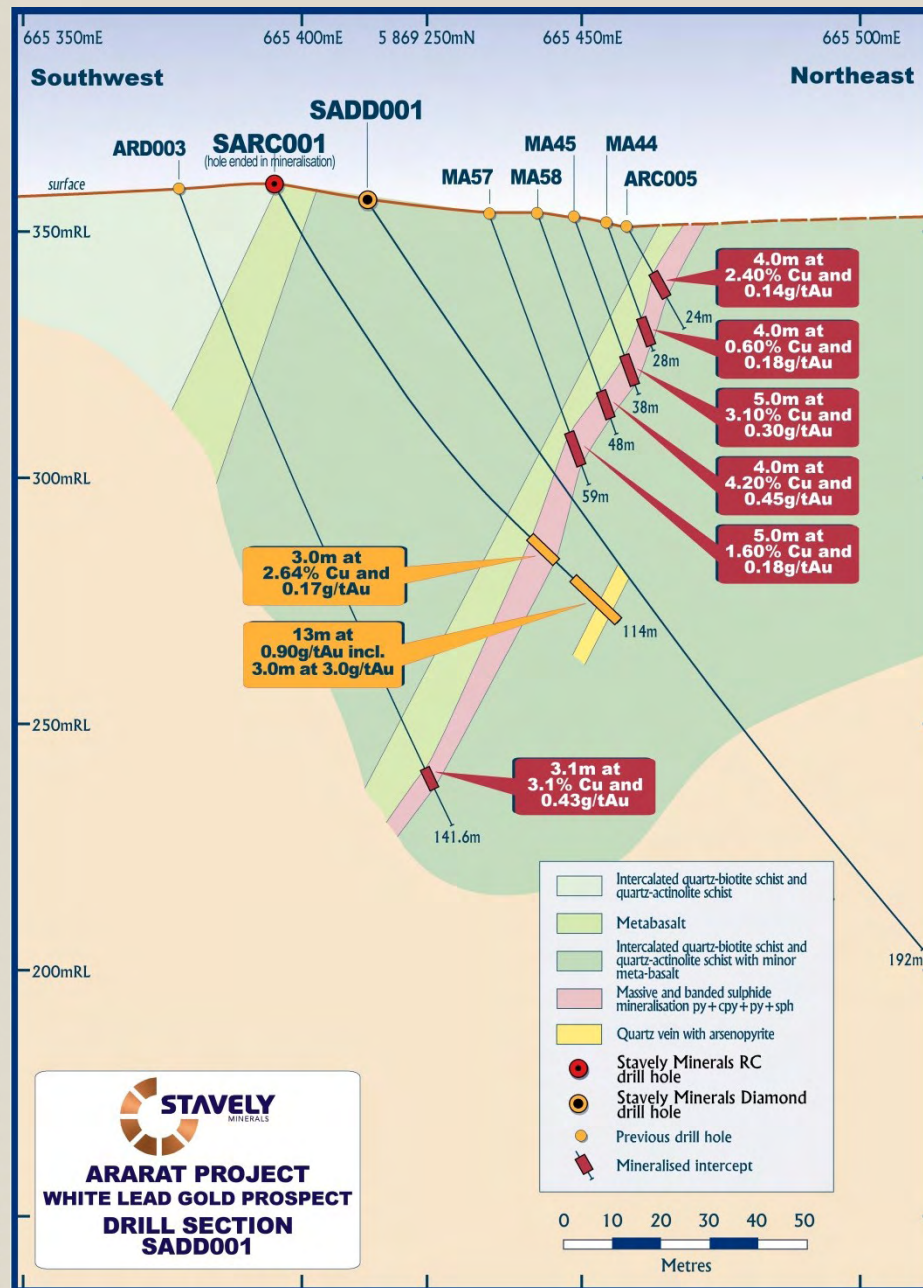
- 10.8% copper, 0.41% Zn and 1.5g/t gold
- 24% copper, 1.1% zinc and 0.52g/t gold



¹ see ASX announcement dated 8 May 2015 and available from www.stavely.com.au



ARARAT PROJECT



Stawell-style gold potential

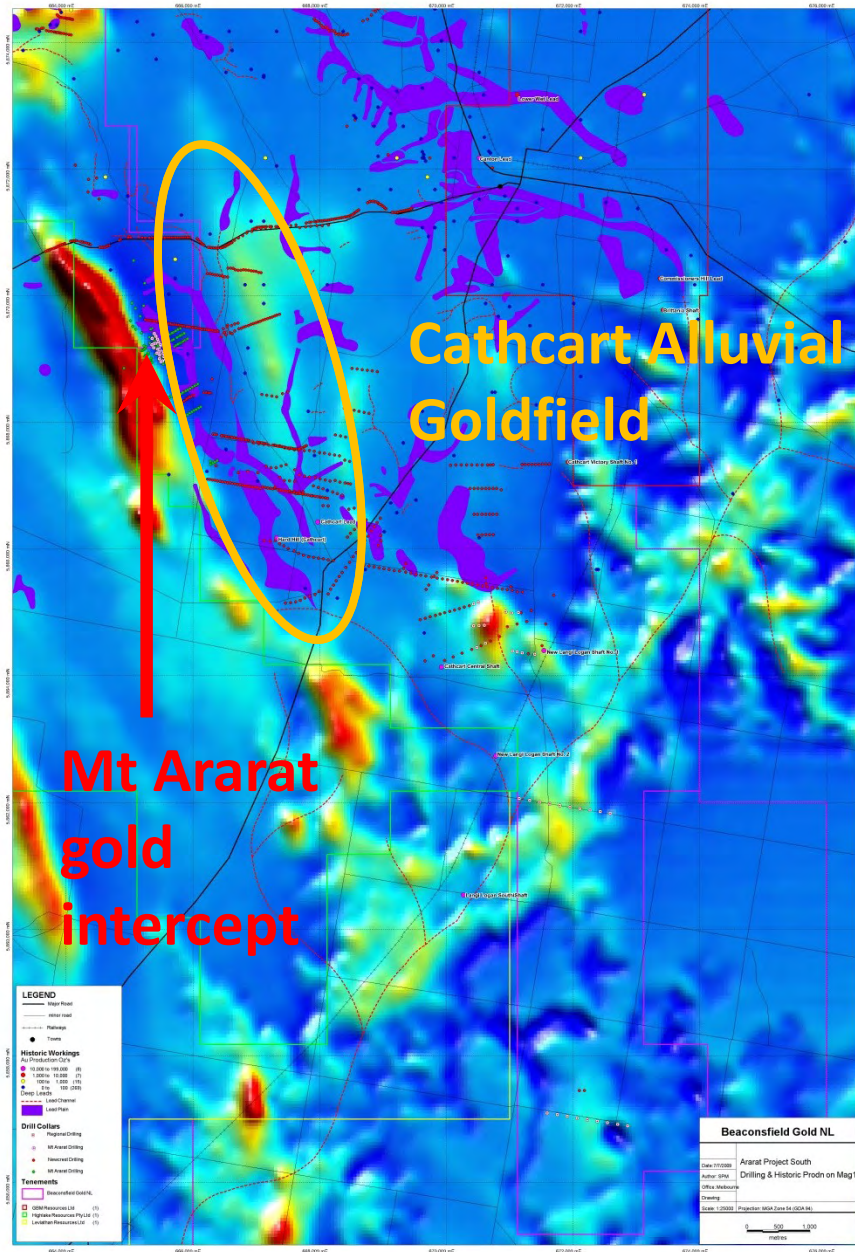
Unexpectedly, drill hole SARC001 also intersected 13m at 1g/t gold (to EoH) including a significant higher grade zone of:

- 3m at 3.04 g/t gold

3 follow-up diamond drill holes completed – results pending

¹ see ASX announcement dated 10 September 2014 and available from www.stavely.com.au

ARARAT PROJECT



Stawell-style gold potential

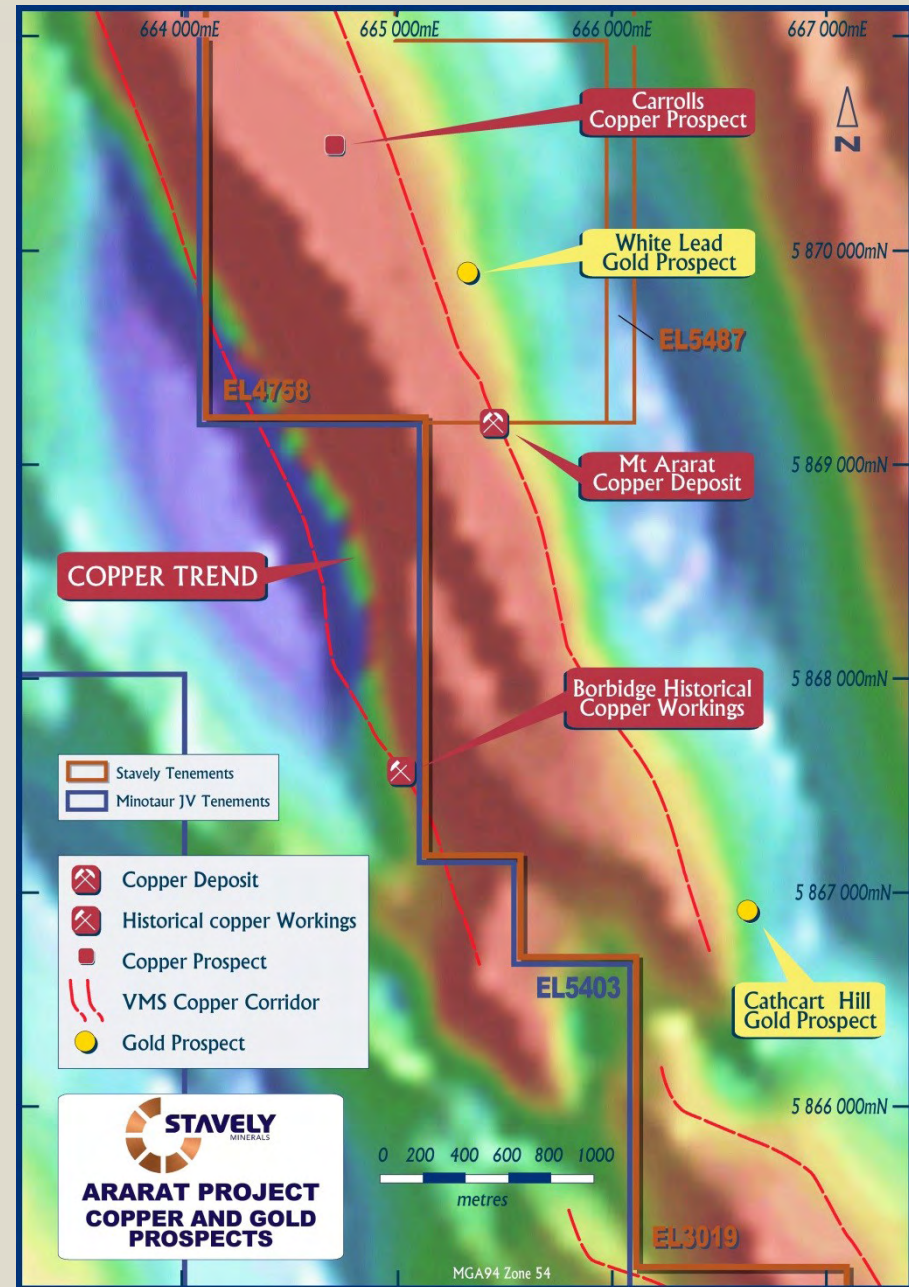
- The Ararat goldfield produced ~640,000oz from alluvials and deep leads
- No hardrock source identified.

ARARAT GOLDFIELD

STAVELY
MINERALS

Stawell-style gold potential— Two new gold prospects identified in soil sampling

- Cathcart Hill
- White Lead



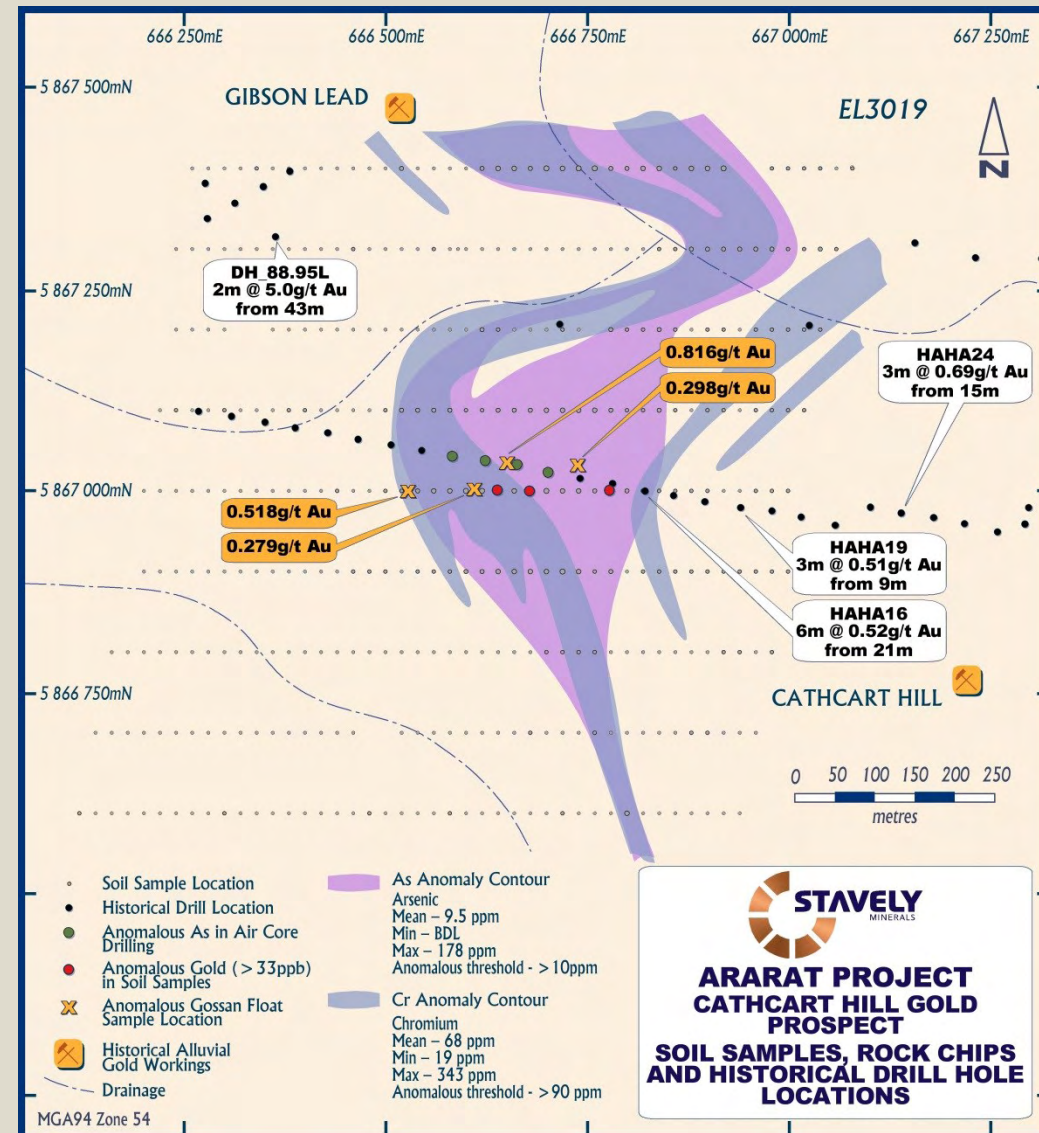
ARARAT PROJECT



Cathcart Hill Gold Prospect

- Newly discovered gold prospect
- Arsenic, chromium ('Stawell-signature') soil anomaly 800m long and open to the north and south
- Rock-chips to 0.8g/t gold
- Nearby diamond drill hole intercept 2m at 5g/t gold

¹ see ASX announcement dated 29 April 2014 and available from www.stavelly.com.au



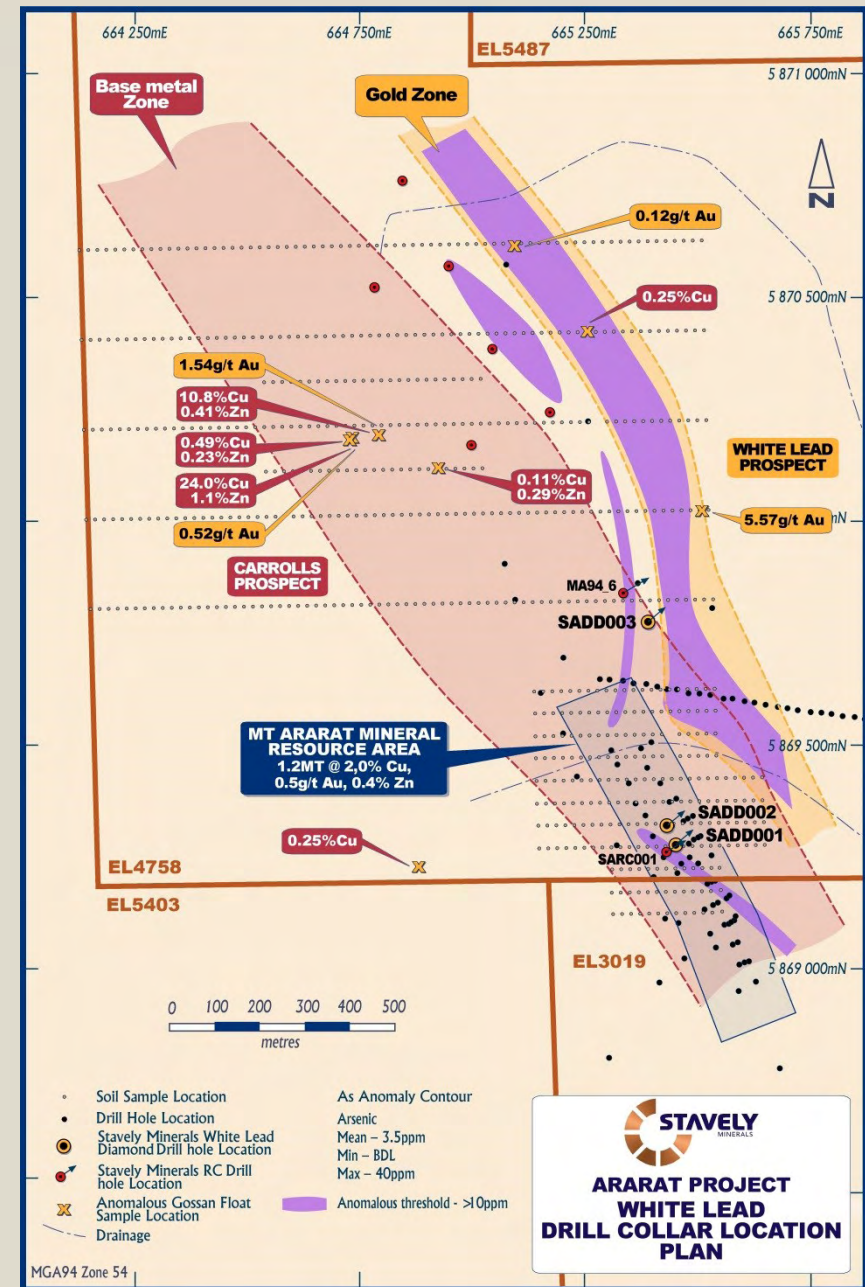
ARARAT PROJECT

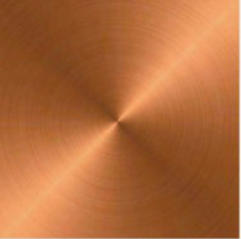


White Lead Gold Prospect

- Newly discovered gold prospect
- Arsenic, chromium, copper, lead ('Stawell signature') soil anomaly 1km long and open to the north and south
- Rock-chips to 5.6g/t gold
- Likely source of the White Lead alluvial gold production – part of the Cathcart Goldfield

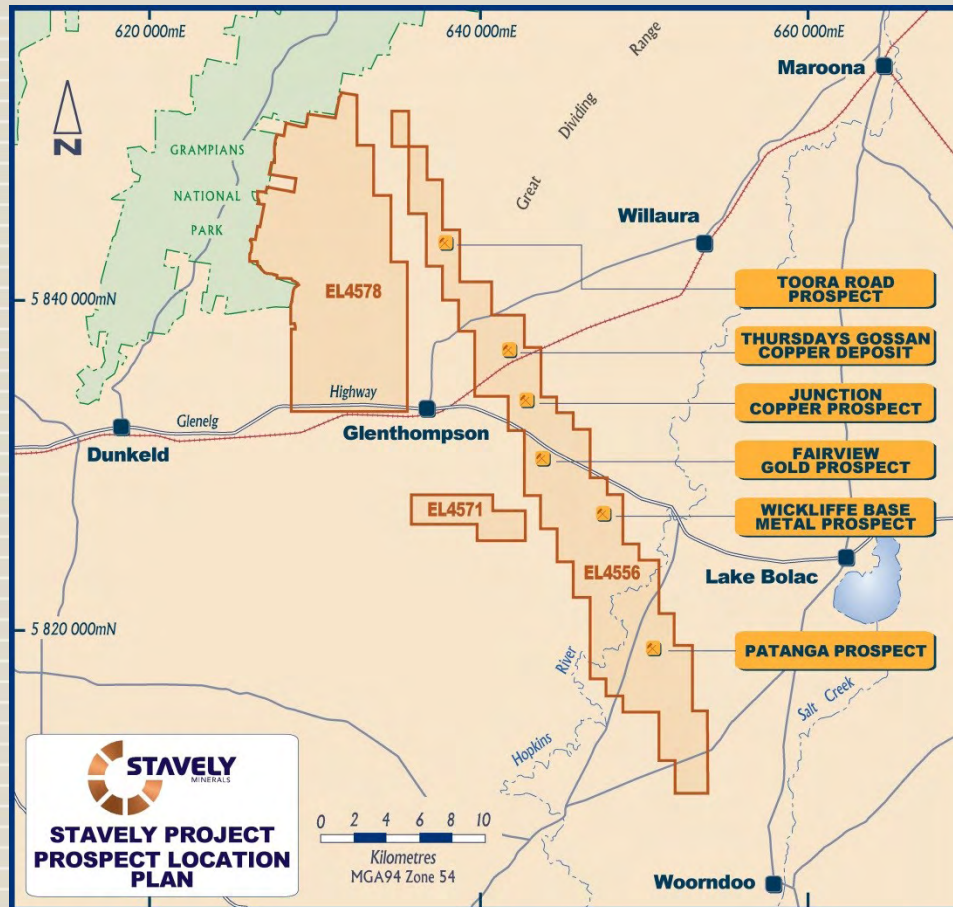
¹ see ASX announcement dated 8 May 2014 and available from www.stavelly.com.au





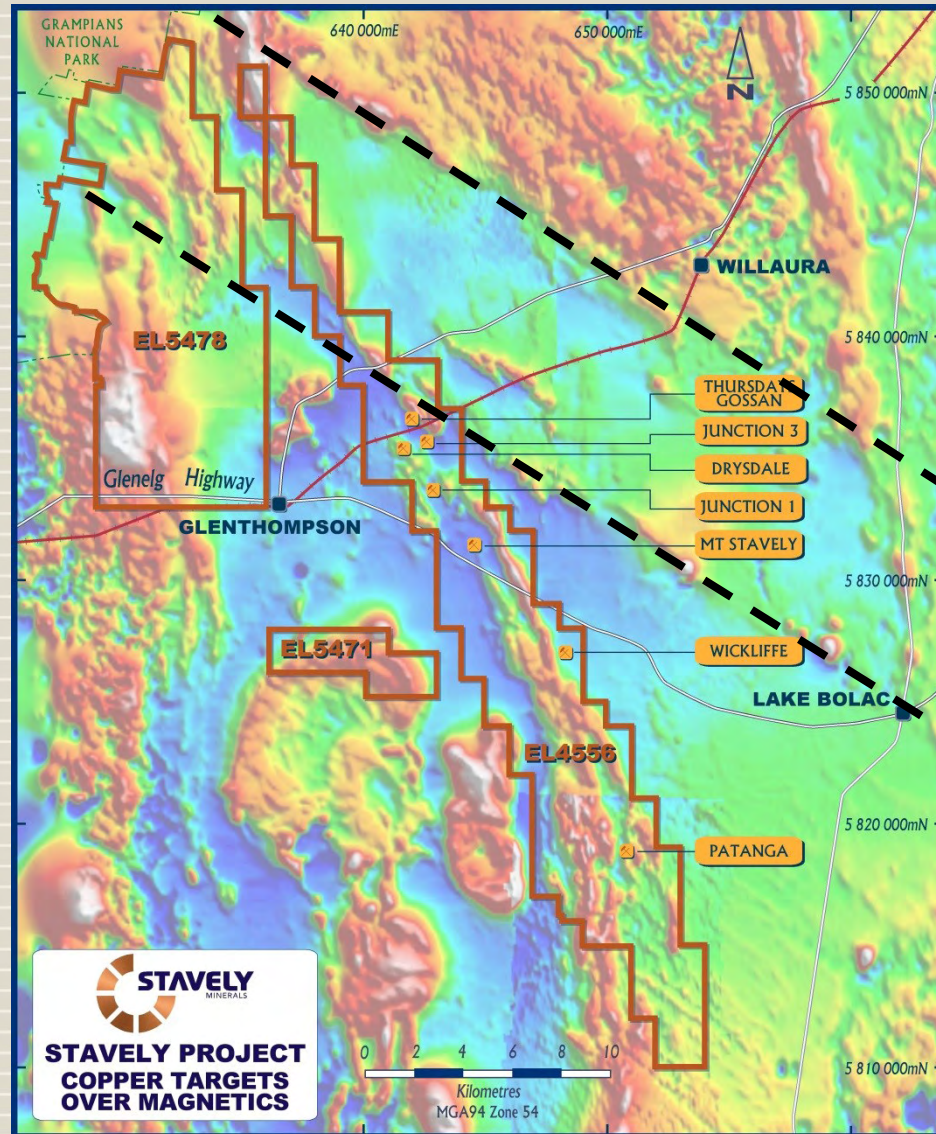
STAVELY PROJECT

STAVELY PROJECT



- Thursday's Gossan chalcocite enriched blanket – Inferred Mineral Resource of 28Mt at 0.4% copper containing 107kt copper
- Thursday's Gossan porphyry
- Junction porphyry
- Fairview Gold prospect
- Wickliffe VMS prospect
- Patanga porphyry prospect

STAVELY PROJECT

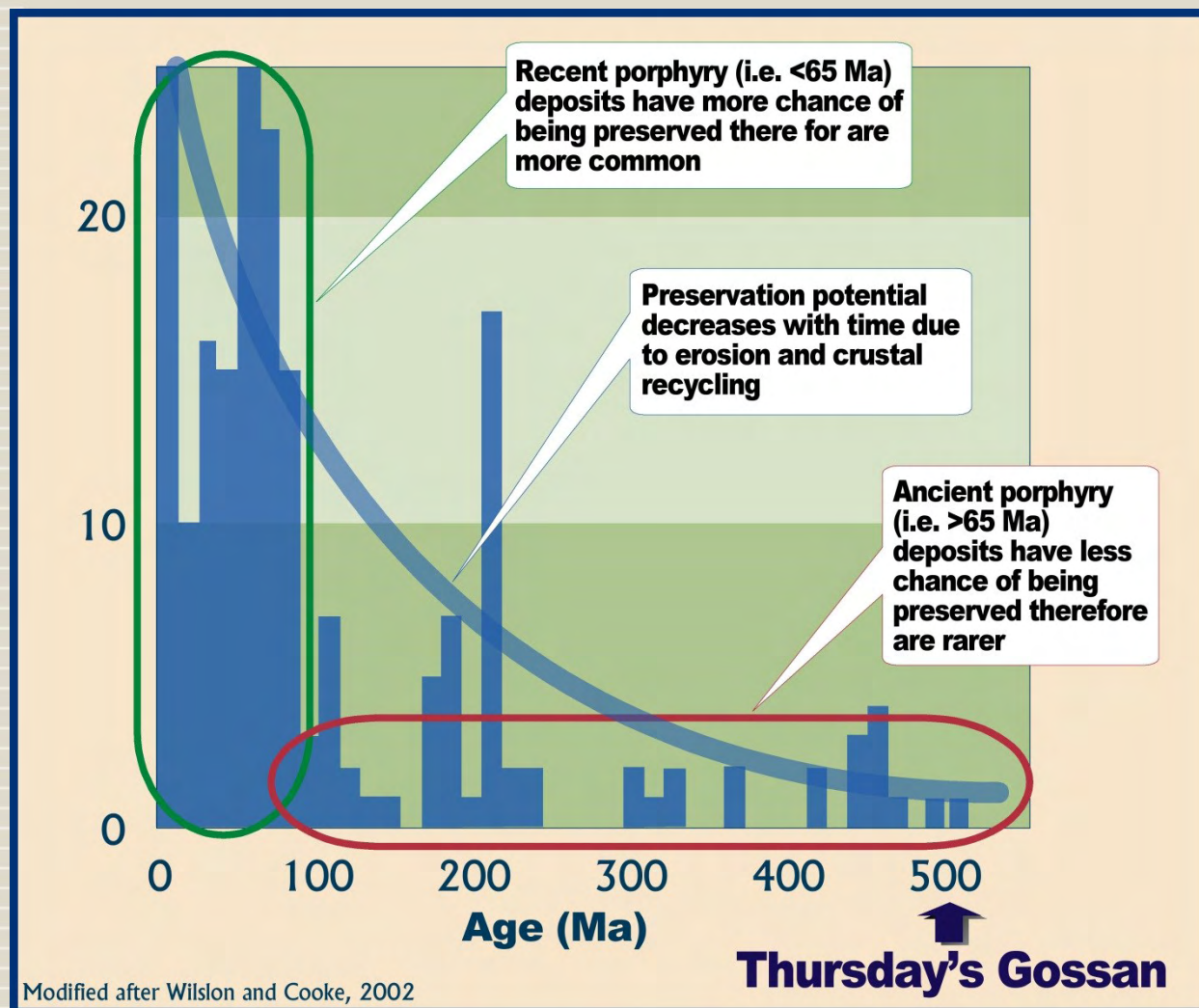


- Similar structural setting to Cadia Valley
 - ~N-S trending volcanic belt
- Major NW trending structures

Why look for porphyries in western Victoria?

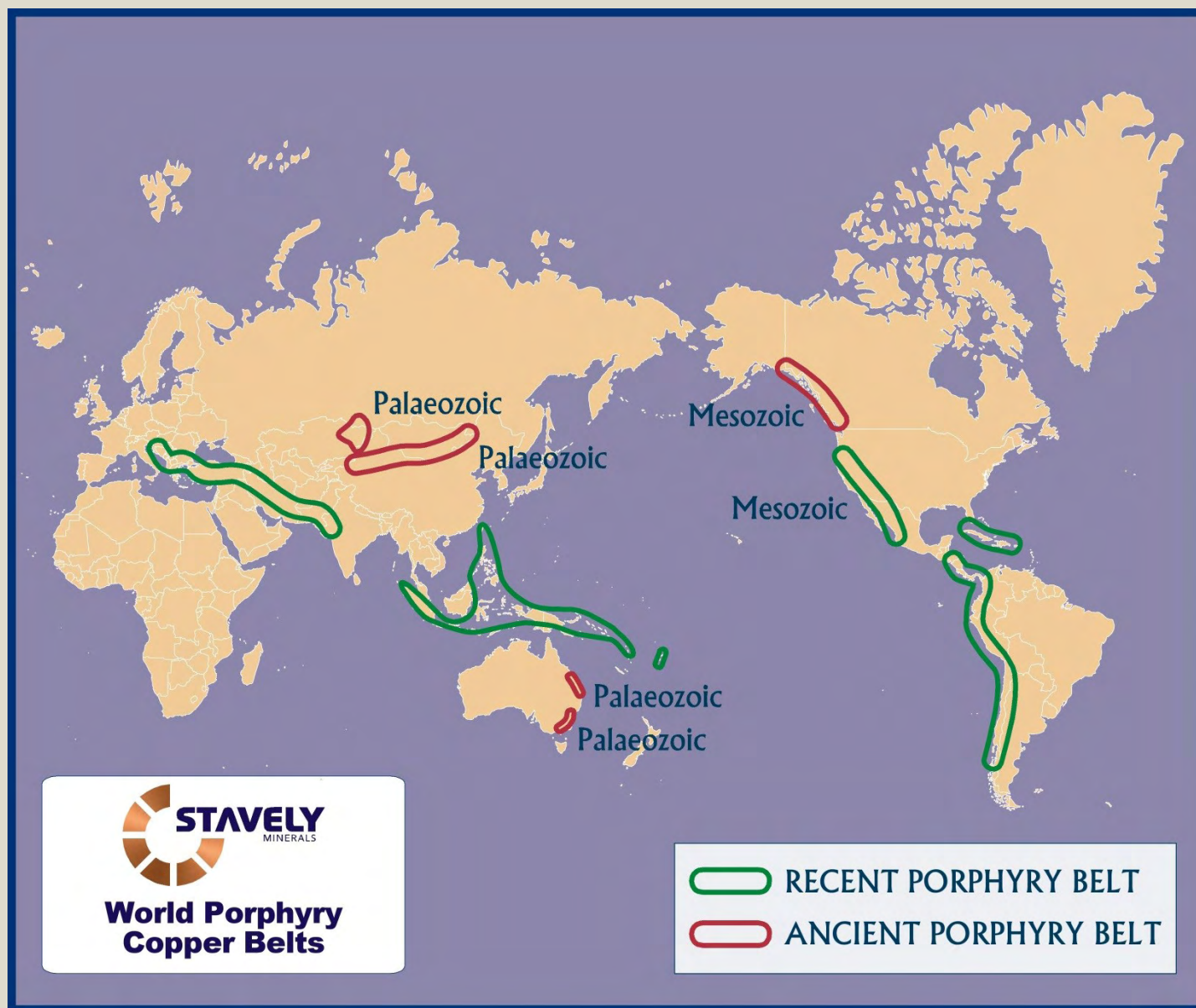
- Porphyries are large metal systems with a well understood alteration zonation typically an order of magnitude larger than the deposit itself – ie. The ‘hydrothermal system’ has a large footprint that has a recognisable zonation from cooler outer alteration to hotter inner alteration
- There are several types of porphyries – copper, copper-molybdenum, copper-gold, molybdenum etc
- Many are operated as large open pits but a special class are attractive as underground ‘block cave’ operations – those deposits are alkalic copper-gold porphyries typically with higher copper and/or gold grades and this is what we are looking for!

Why look for porphyries in western Victoria?

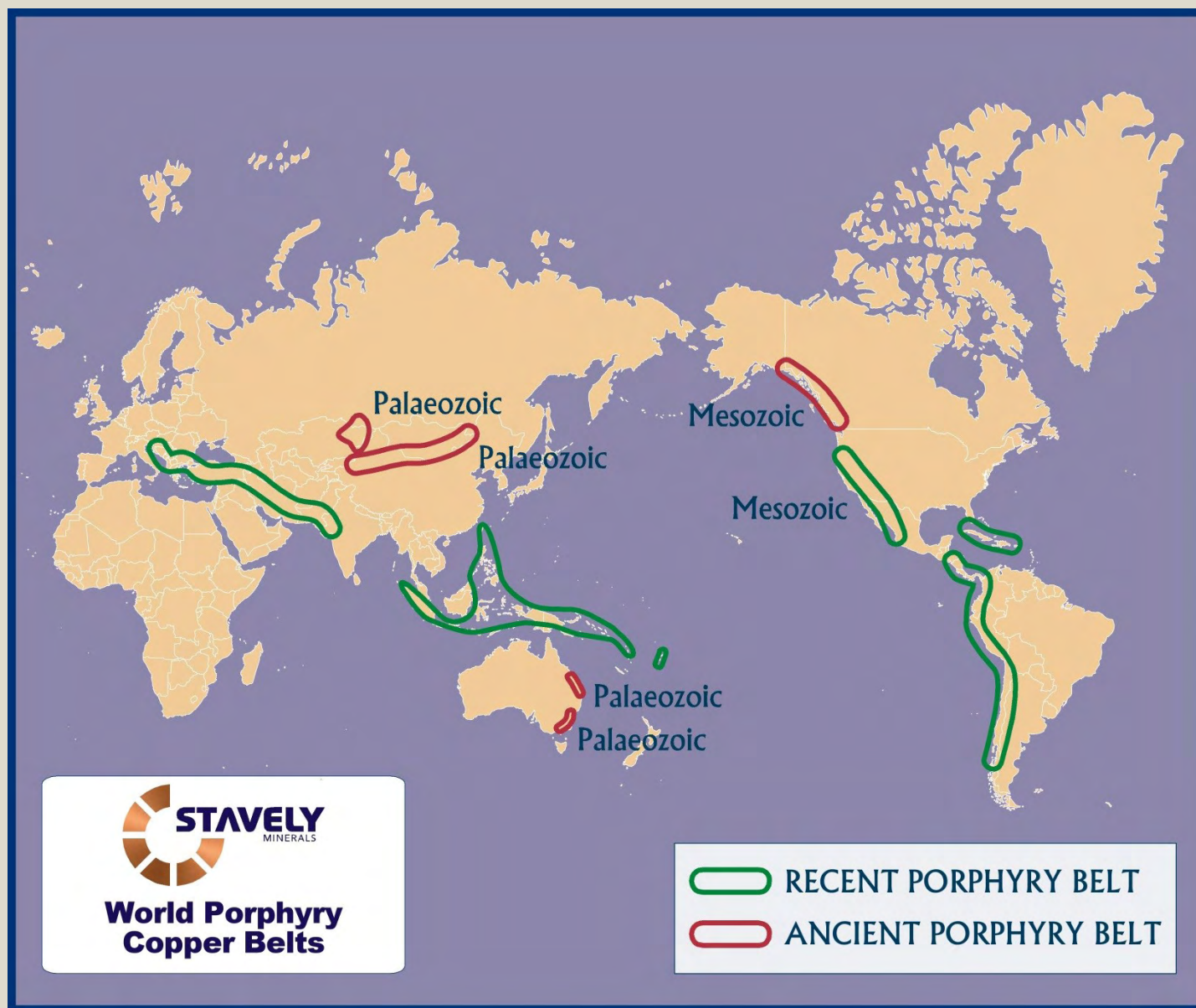


- Porphyry deposit examples from as early as Archaean age
- Likelihood of porphyry deposit preservation decreases with age due to erosion and crustal recycling

Why look for porphyries in western Victoria?



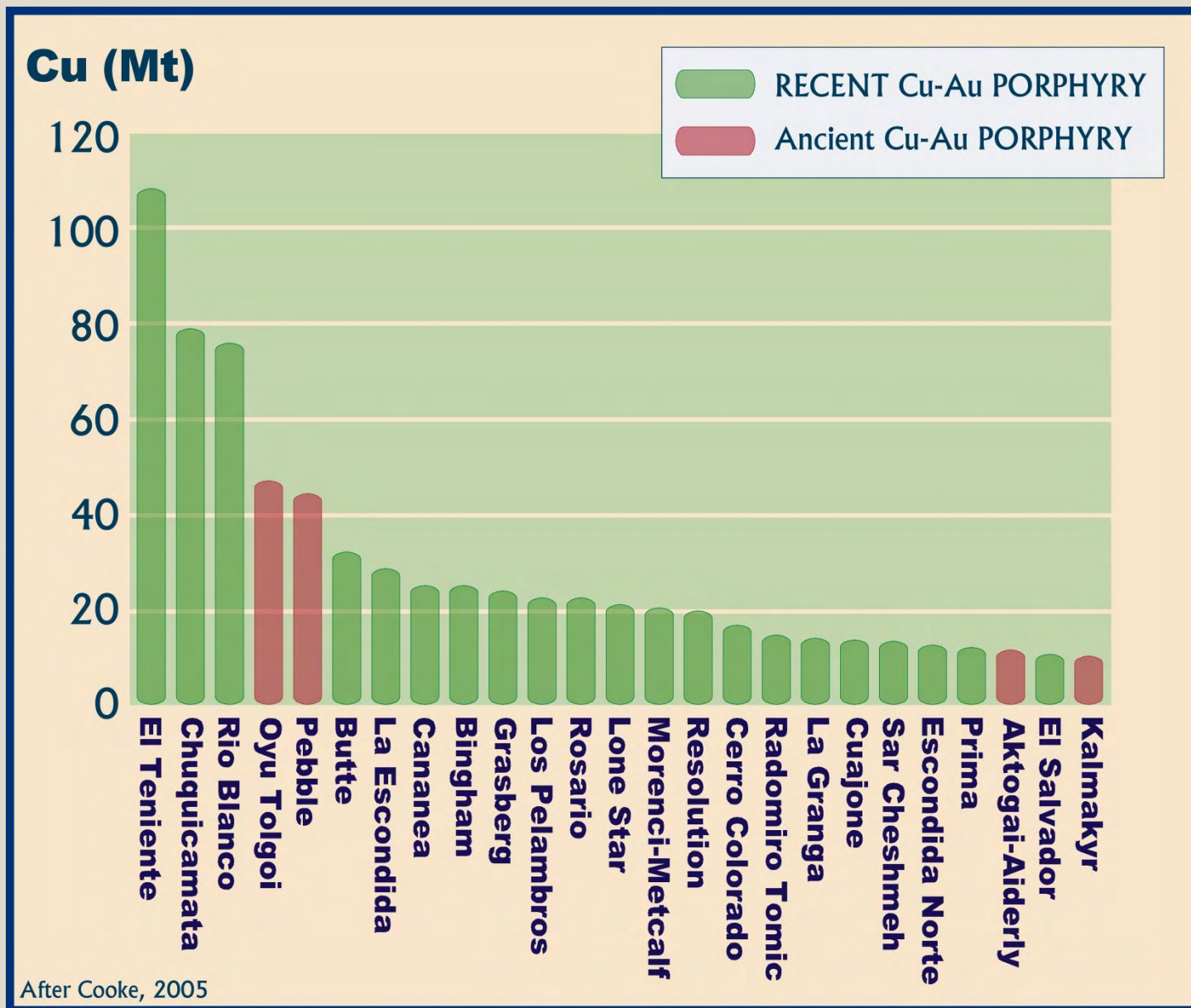
Why look for porphyries in western Victoria?



STAVELY PROJECT

STAVELY
MINERALS

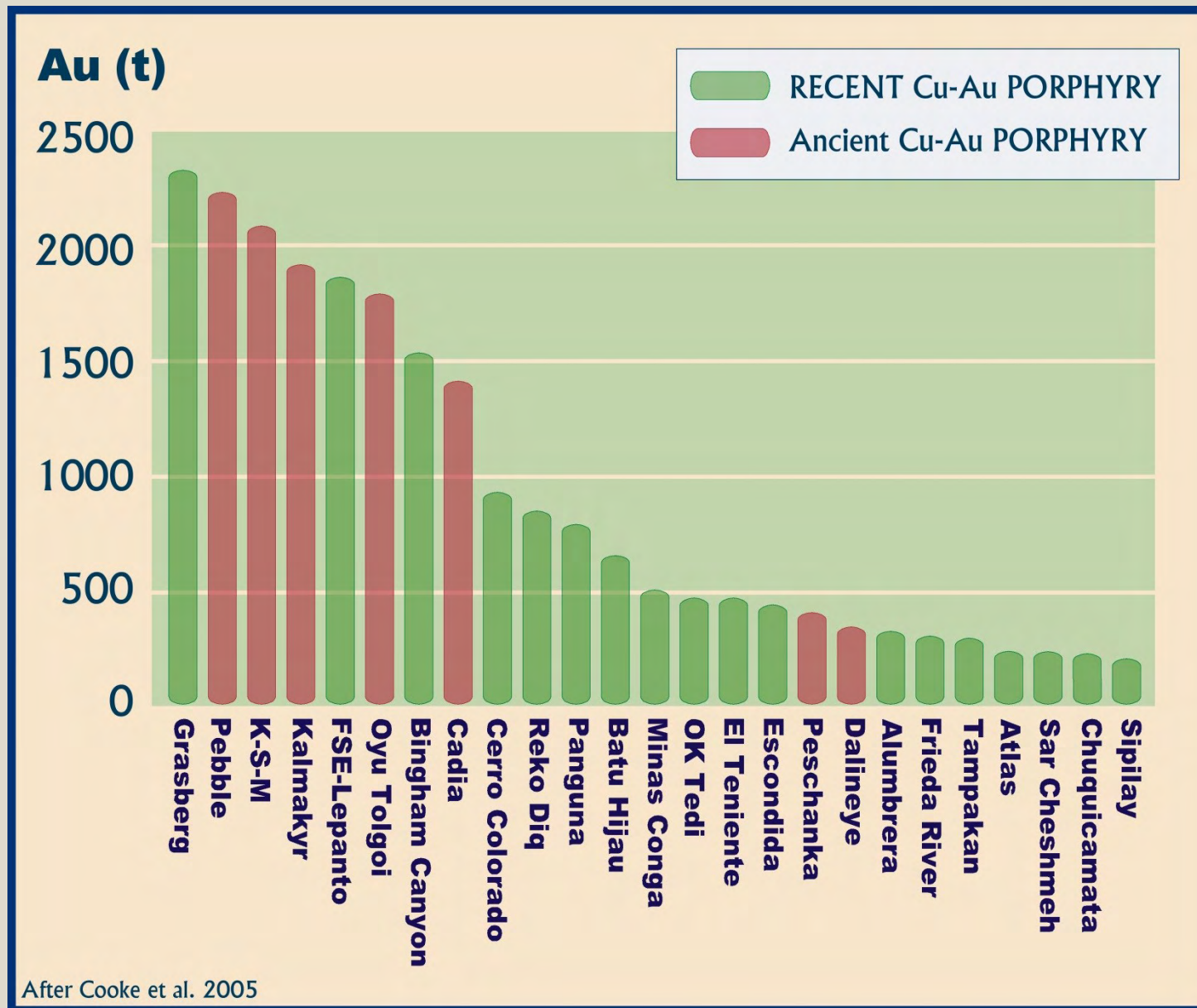
Why look for porphyries in western Victoria?



STAVELY PROJECT



Why look for porphyries in western Victoria?



Why look for porphyries in western Victoria?

- Despite the reduced likelihood of preservation, the 'ancient' porphyries are disproportionately gold-rich
- The better value per tonne allows development by less obtrusive yet very cost-efficient block-cave mining method
- Alkalic porphyries are characteristically smaller spatially, and can have more limited alteration haloes making them a more difficult exploration target
- 7 phases of drilling lead to the discovery of Cadia Ridgeway – initial Mineral Resource:

44Mt at 2.6 g/t gold and 0.82% copper*

**Discovery of the Cadia Ridgeway gold-copper porphyry deposit, Halliday et al, 1999*

But what evidence that the Thursday's Gossan porphyry is an alkalic copper-gold porphyry?

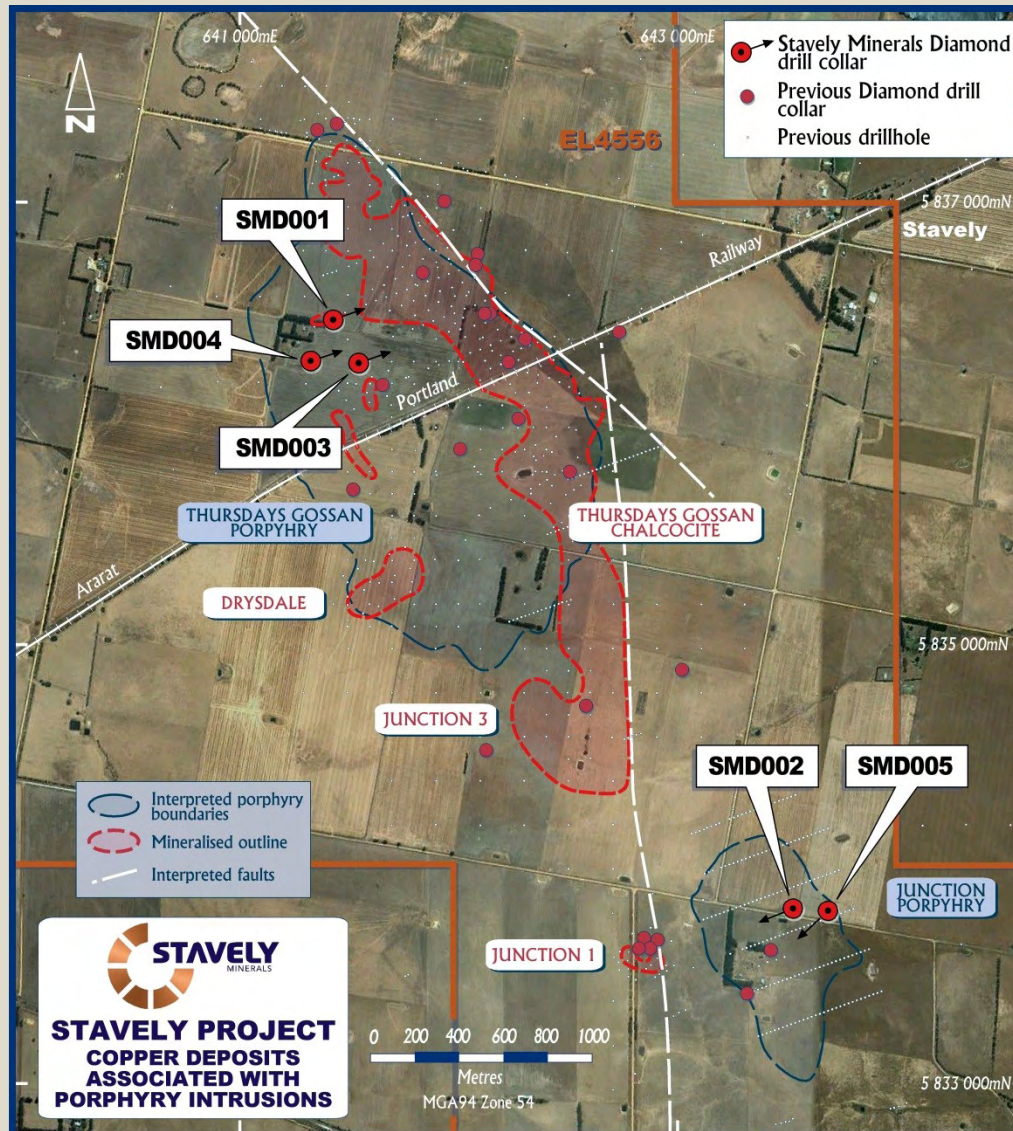
- Zones of pervasive hematite alteration
- Strongly negative δ^{34} sulphur isotope values
- Metal ratios – gold and silver rich
 - **5m @ 1.4% copper, 0.25g/t gold and 11 g/t silver** from the Junction deposit
 - D-veins from Thursday's Gossan
 - **7.7 metres at 4.14% copper, 1.08 g/t gold and 77g/t silver**
 - **9.5 metres at 2.93% copper, 0.44g/t gold and 42 g/t silver**
 - **VSTD001 – 32m at 0.8% copper and 0.4g/t gold**
- Geochemical similarity with alkalic 'switch' in the Mt Read Volcanics
 - Tony Crawford, UTAS

¹ see ASX announcement dated 12 May 2014 and available from www.stavely.com.au

STAVELY PROJECT



Thursday's Gossan Porphyry

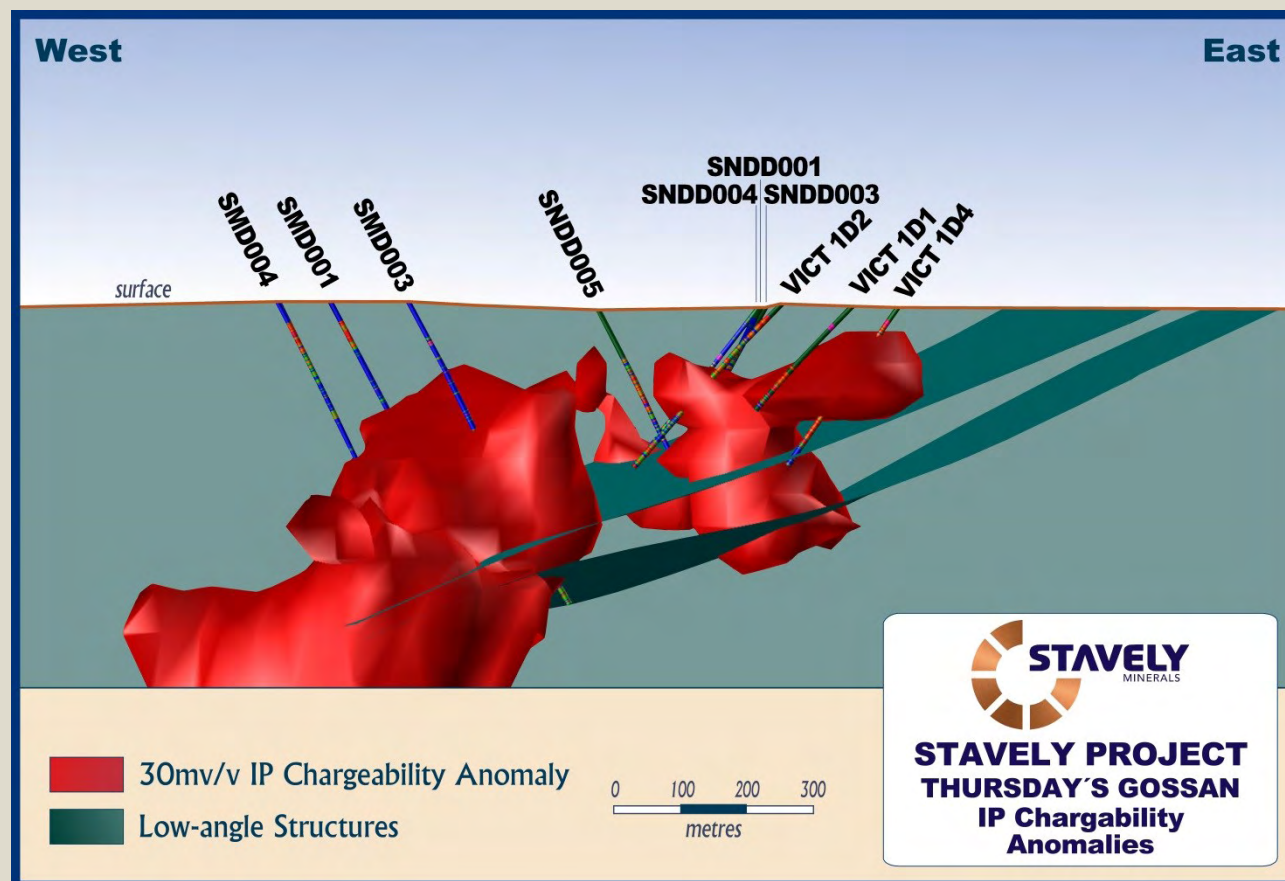


Stavely Minerals drilled 3 deep diamond drill holes (between 532m to 640m deep) into an induced polarisation (IP) chargeability anomaly

STAVELY PROJECT

STAVELY
MINERALS

Thursday's Gossan Porphyry

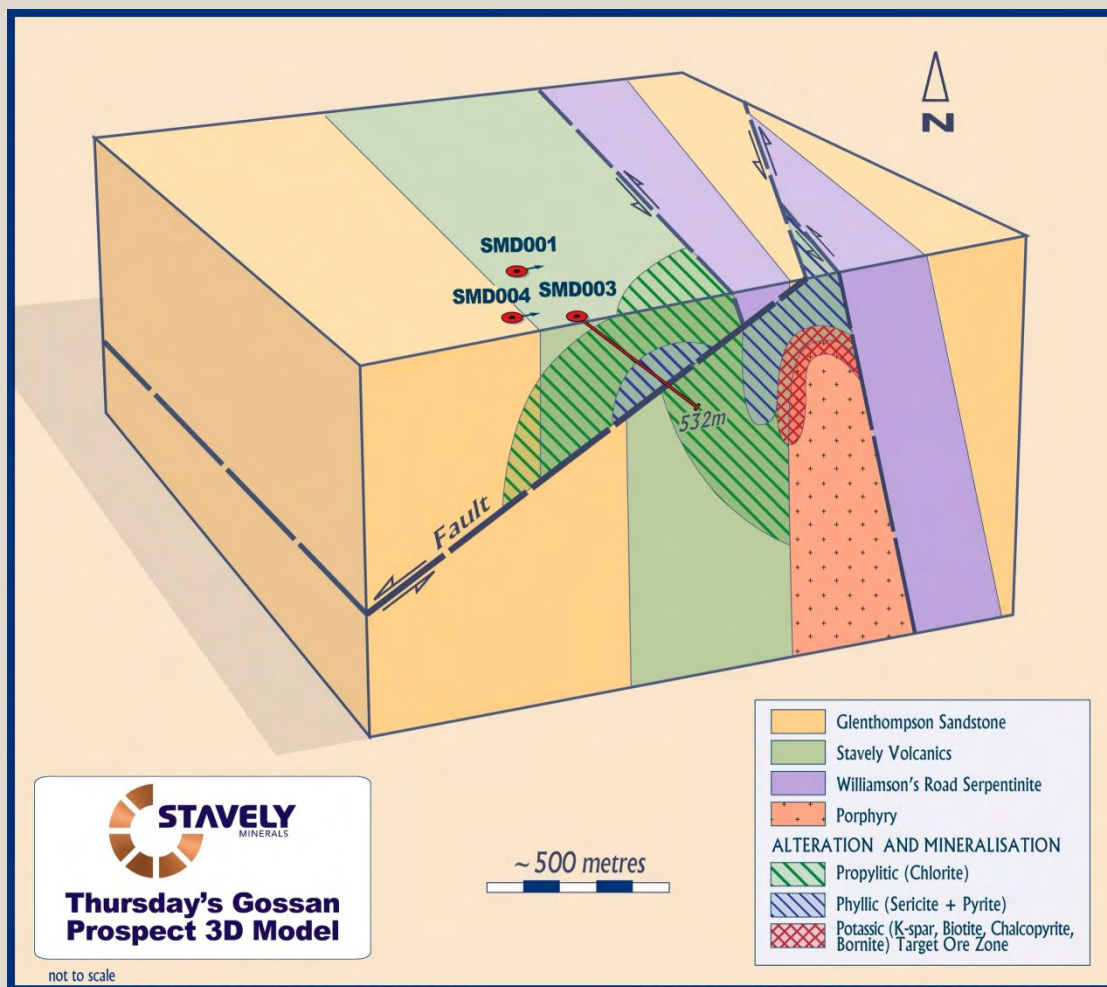


Drilling intercepted well-developed phyllic alteration (sericite-pyrite) which corresponded well with the IP chargeability anomaly

STAVELY PROJECT

STAVELY
MINERALS

Thursday's Gossan Porphyry

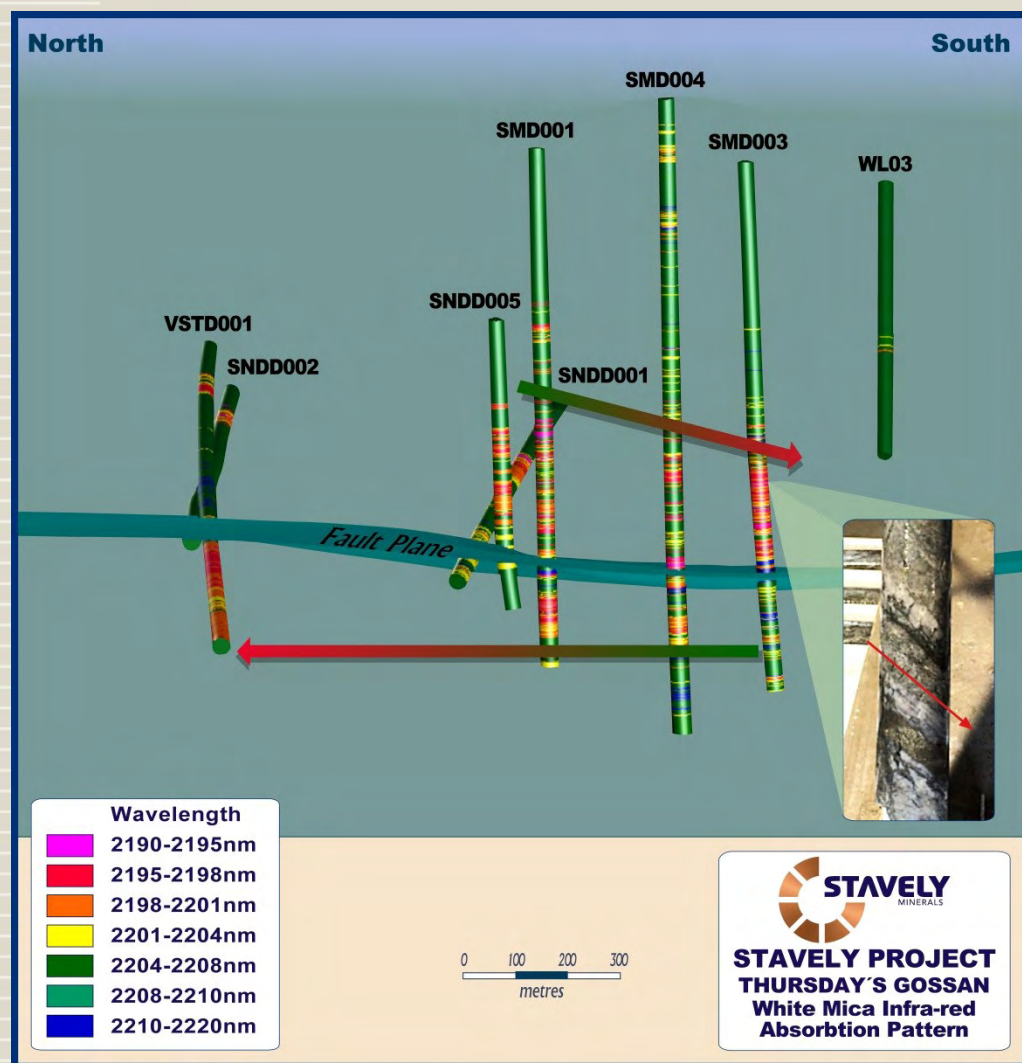


The three deep diamond drill holes identified a low-angle structural offset to the porphyry system

STAVELY PROJECT



Thursday's Gossan Porphyry



Structural analysis, kinematic indicators, white mica shortwave infra-red absorption features and sulphur isotope results all concur the porphyry 'core' has been transposed north and east beneath the structural zone.

What do investors need to take from this?

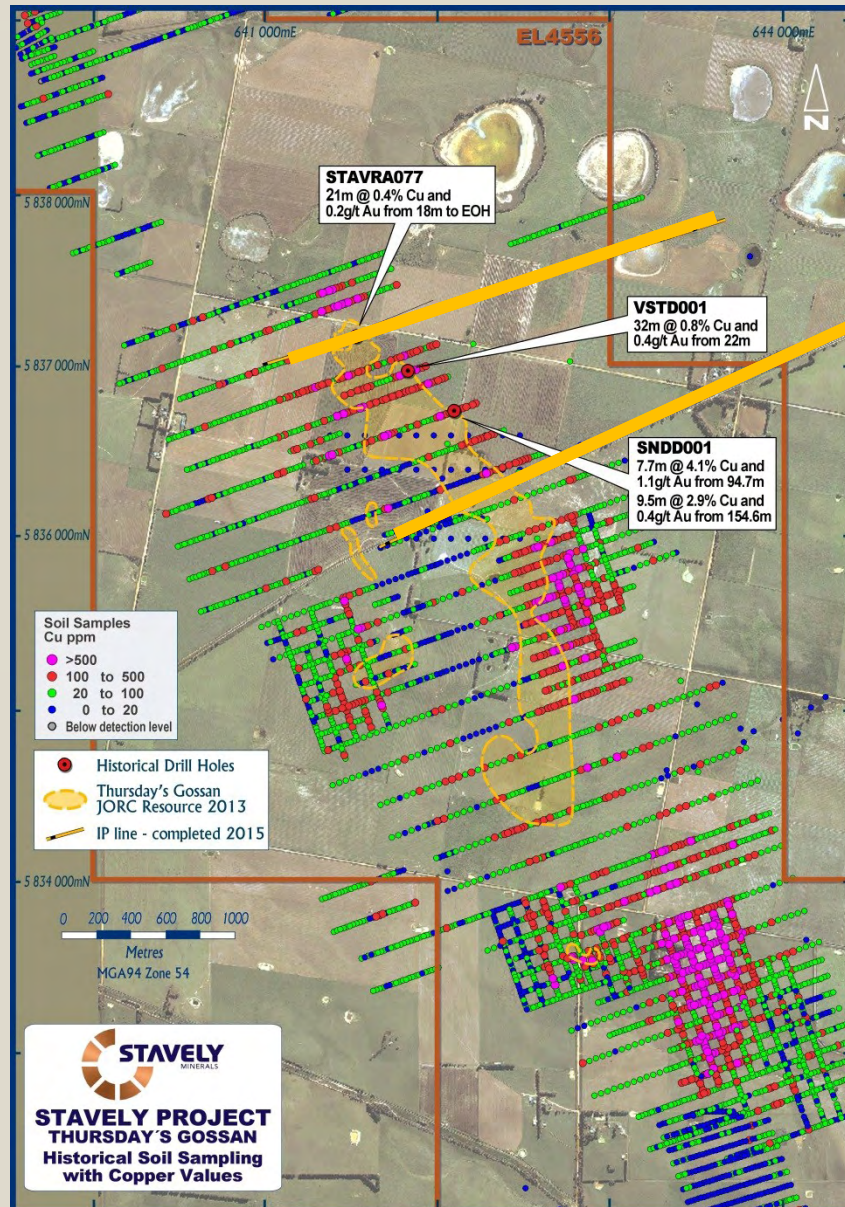
The target porphyry 'core' is yet to be discovered and we believe we have strong evidence indicating where it has gone.

¹ see ASX announcement dated 12 May 2014 and available from www.stavelly.com.au

STAVELY PROJECT



Thursday's Gossan Porphyry



New IP survey lines to extend coverage to east and north where structural model say the target porphyry 'core' has been transposed

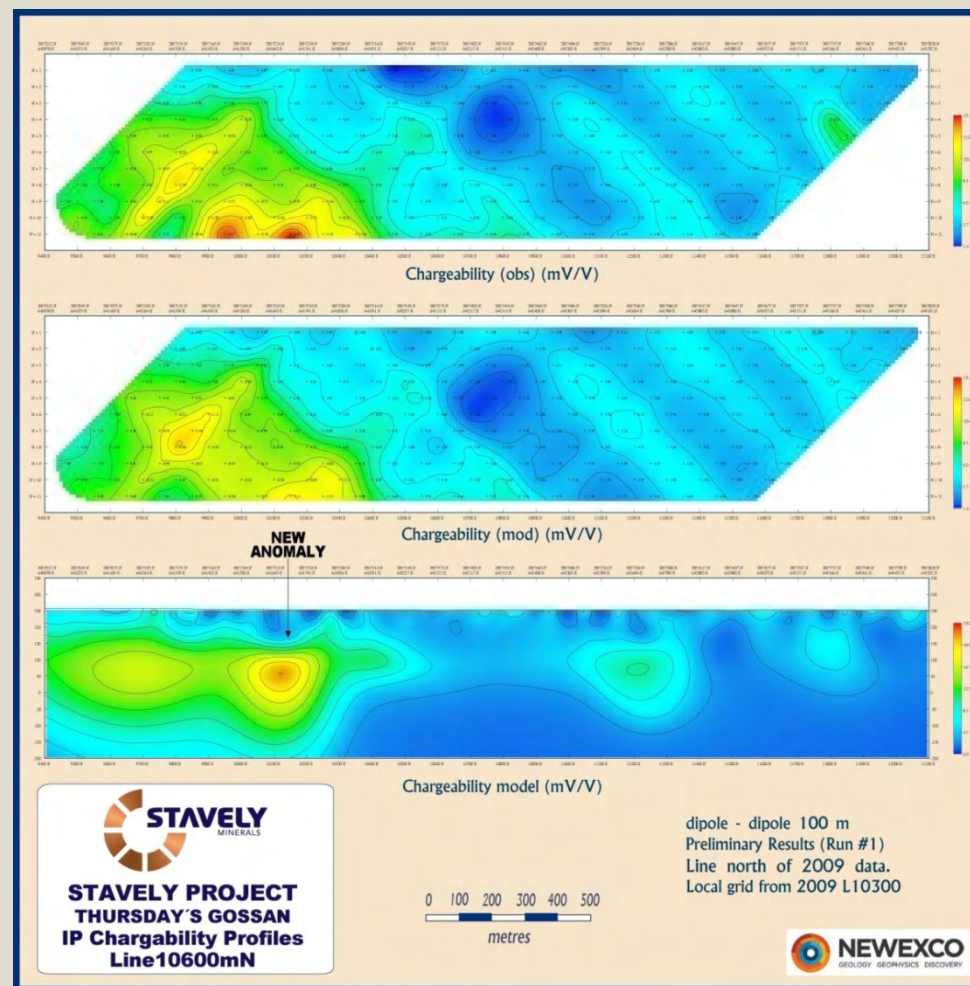
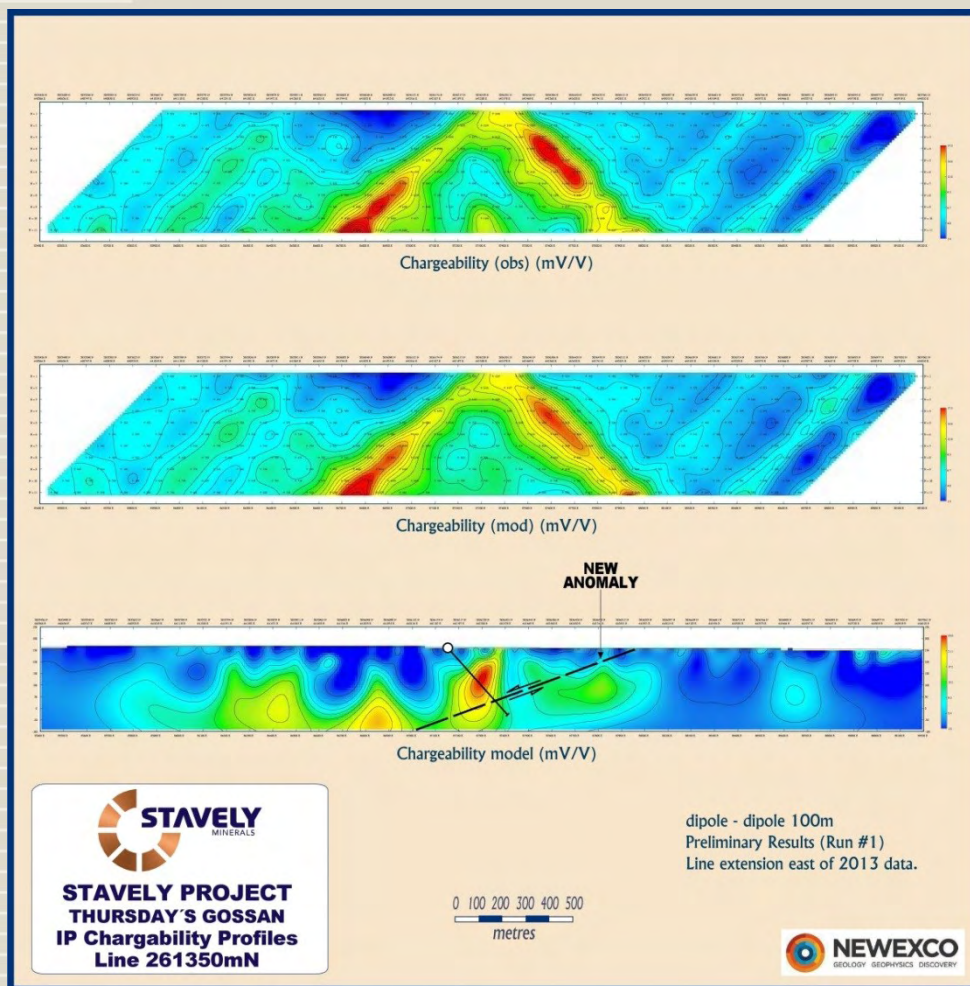
STAVELY PROJECT



Thursday's Gossan Porphyry

New IP chargeability anomalies on both lines:

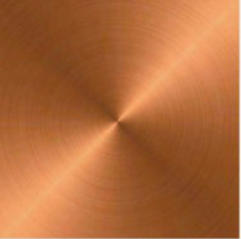
- Line 261350, anomaly under low-angle structure
- Line 10600, strong chargeability anomaly



Thursday's Gossan Porphyry

Results to date:

- ✓ Very positive results from drilling the IP chargeability anomaly – increasingly intense alteration, very 'busy' drill core, low-grade copper mineralisation in peripheral alteration
- ✓ Intercepted a low-angle structure at ~400-480m depth – structural interpretation, kinematic indicators, white mica shortwave infra-red absorption features and sulphur isotopes all concur that the porphyry 'core' – where best developed copper-gold mineralisation could be expected – has been transposed to the north beneath the offset structural zone
- ✓ IP chargeability anomalies in areas predicted to host 'core'



WORK PROGRAMMES

WORK PROGRAMMES



Work programme for the Ararat Project

- At Mt Ararat, additional surface geochemistry and IP geophysics to identify additional base metal–gold mineralised horizons in advance of drilling
- Extend soil sample grids, complete IP geophysics in advance of drilling at the new Stawell-style gold prospects
- Reconnaissance soil geochemistry over the 15 km copper-gold VMS prospective horizon
- Follow-up of other gold targets in the region

Work programme for the Stavely Project

- At Thursday's Gossan, additional IP surveys to refine new anomalies prior to drill testing
- In the region, follow-up of other gold and copper-gold opportunities

Even though the market is crappy for explorers, we are still very busy and getting great results

Thank You

Contact Us:

Stavely Minerals Limited

Level 1, 168 Stirling Highway

Nedlands WA 6009

www.stavely.com.au

info@stavely.com.au

Ph: 08 9287 7630

The information in this presentation is extracted from information available to view on www.stavely.com.au. The company confirms that it is not aware of any new information or data that materially affects the information included in the original market announcement and, in the case of estimates of Mineral Resources or Ore Reserves, that all material assumptions and technical parameters underpinning the estimates in the relevant market announcement continue to apply and have not materially changed. The company confirms that the form and context in which the Competent Person's findings are presented have not been materially modified from the original market announcement.