

# Kingston Resources Limited

# KSN

## Investor Presentation

June 2015

**Kingston Resources Ltd**

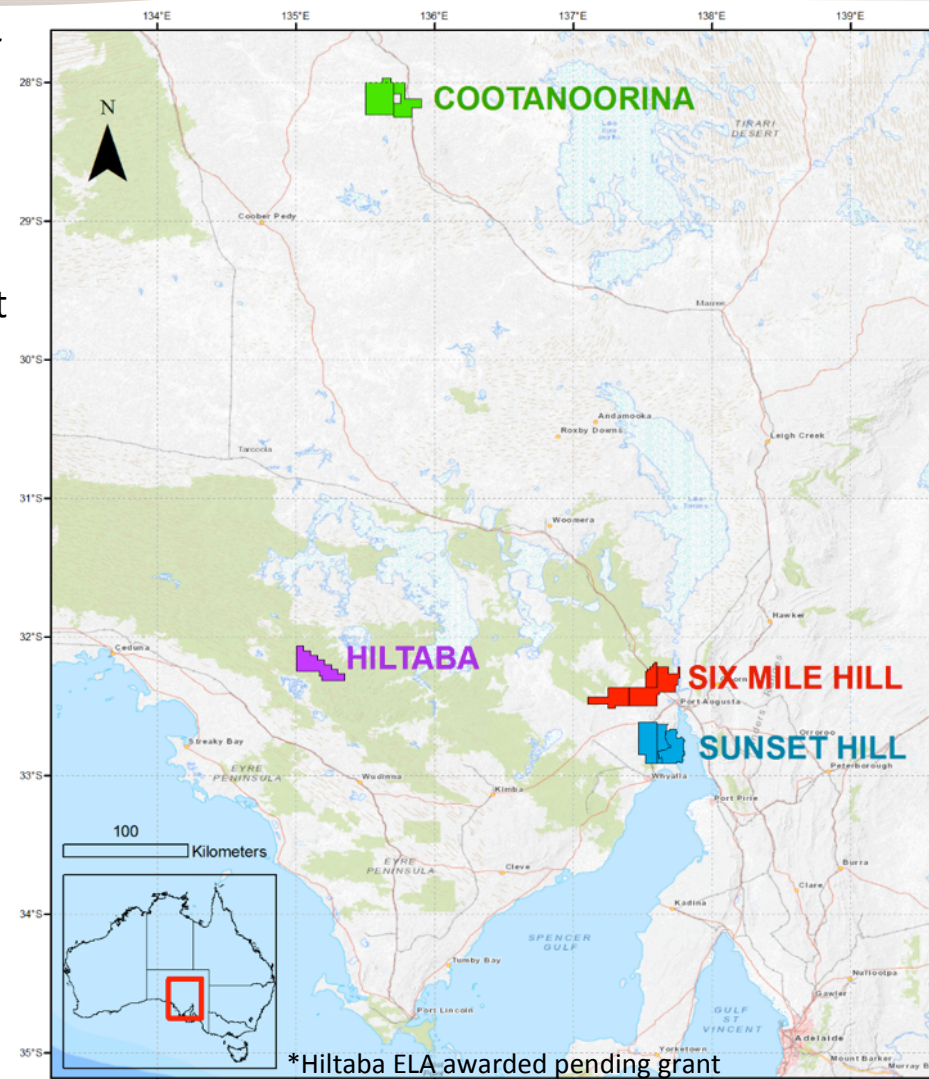
25-27 Jewell Parade North Fremantle, Western Australia 6159

**t** +61 8 9336 6619 **f** +61 8 9335 3565 **w** [www.kingstonresources.com.au](http://www.kingstonresources.com.au) **e** [info@kingstonresources.com.au](mailto:info@kingstonresources.com.au)

# KINGSTON RESOURCES LIMITED - Investment Highlights

*Kingston aims to discover a Copper / Gold deposit and deliver significant returns to shareholders*

- **Upcoming drilling campaign at Six Mile Hill**
  - Multi-hole program; regular news
  - Selected as flagship project for SA Government funded Mineral Systems Drilling Program
  - Key targets at less than 250m depth
- **Outstanding technical team**
  - Led by former Chief Geophysicist Global Exploration for Barrick Gold
  - Technical approach repeatedly endorsed with funding by SA Government
- **Low operating expenditure; low market cap**
  - Commitment of >\$1M cash and >\$1M in-kind SA government support this financial year
  - Any success likely to deliver significant upside
- **Excellent project areas**
  - World class Olympic Copper-Gold province
  - New mineral province: north Eyre Peninsula





# KINGSTON RESOURCES LIMITED - Corporate Profile

Shares on Issue	146 million
Share Price (at 18 June 2015)	\$0.029
Market Capitalisation	\$4.2 million
Cash (at 31 March 2015)	\$753,000
Options	28.6 million @ \$0.07 Exp 30 Jun 16 25.7 million @ \$0.20 Exp 31 Dec 15
Top 20 shareholding	70%
Board shareholder representation	39%



**Kingston team with South Australian Minister for Mineral Resources and Energy (left) and Director of the Geological Survey (right) following award of Mineral Systems Drilling Program**

## KEY PERSONNEL

Non-executive Chairman	Jonathan Davies BJuris LLB
Executive Director	Stuart Rechner BSc (Geology) LLB GAIG GAICD
Technical Lead	Barry Bourne BSc (Hons) FAIG MAICD
Director / Company Secretary	Mathew Whyte BCom CPA FCSA
Non-executive Director	Yafeng Cai CPA

# KINGSTON RESOURCES LIMITED - Six Mile Hill Project

## Highly Prospective area

- Straddles Olympic Copper-Gold Province and new mineral province
- Key rocks associated with mineralisation event are present
- Anomalous density and magnetic features
- Drill targets modeled to depths of less than 250m
- 1970s drilling shows sediment-hosted copper in rocks above best target

## Government supported

- Selected for South Australian Government Mineral Systems Drilling Program
  - More than \$7 million total collaboration funding (Cash and In Kind) from participants: SA Department of State Development, Deep Exploration Technologies Cooperative Research Centre (DET CRC), Kingston and Minotaur Exploration Ltd (ASX: MEP)
  - Includes major diamond drilling campaign

## Cutting Edge Technologies

- Deploying several new technologies developed by the DET CRC
- The DET CRC is an 8 year, \$145 million research centre to develop transformational technologies for mineral exploration through cover

## Significant Media Coverage

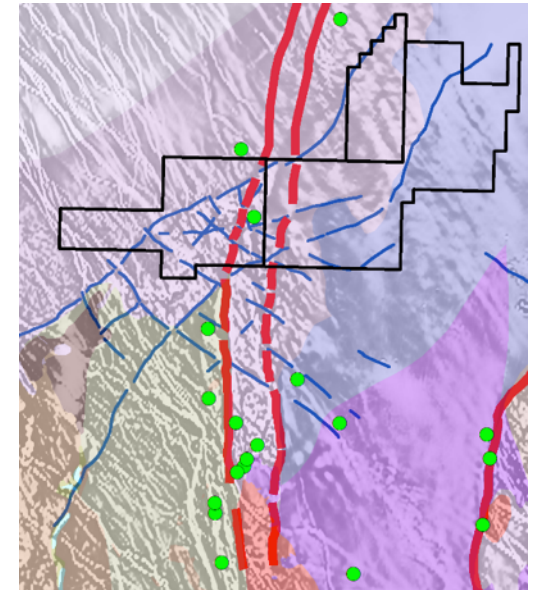
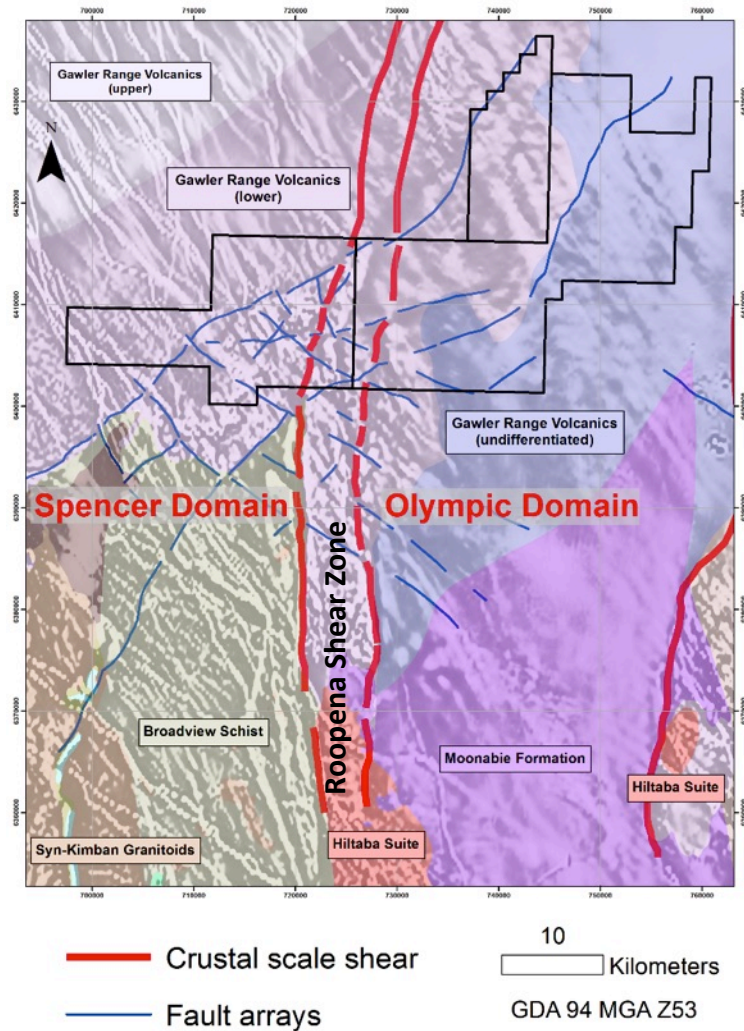
- Herald Sun, Paydirt, Resource Stocks, AusIMM Bulletin, Greenfields Explorer



# KINGSTON RESOURCES LIMITED - Six Mile Hill Project

## Prospective Geology

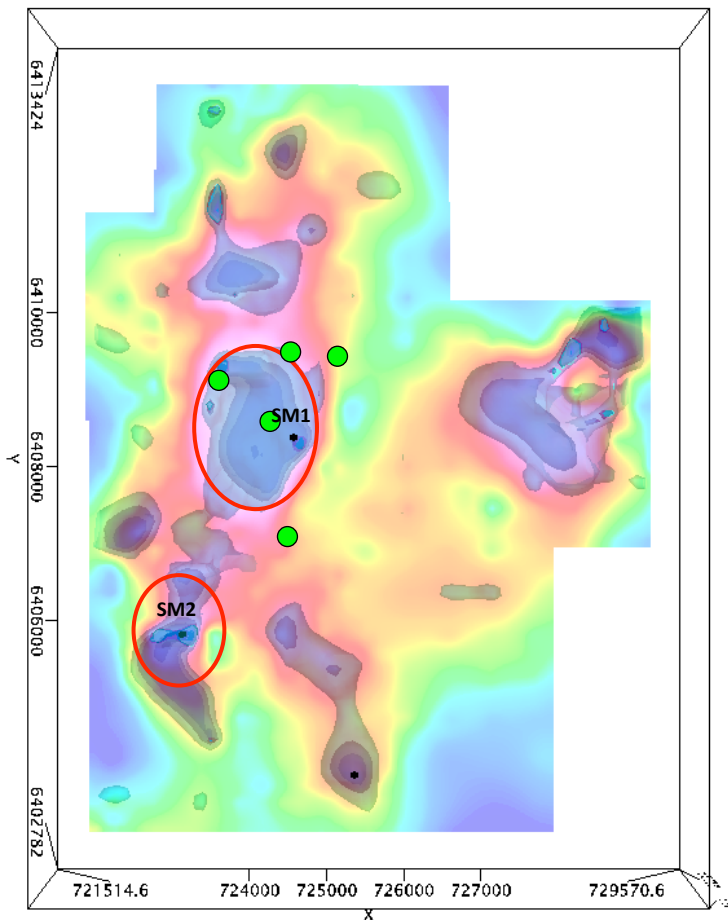
- Gawler Range Volcanics seen in outcrop and historic drilling at Six Mile Hill
- Known Hiltaba Suite granites to the south
- Recent and historic copper prospects and occurrences to the south of Six Mile Hill along the Roopena Shear Zone (including Renascor ASX:RNU)
- NE/NW fault arrays



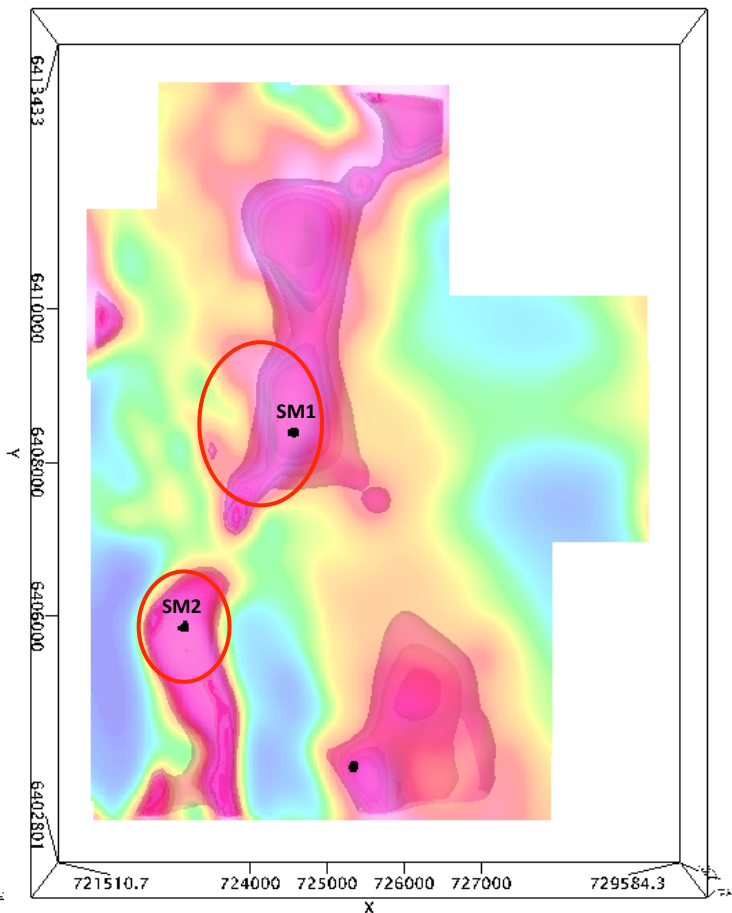
Copper Prospects and Occurrences



# KINGSTON RESOURCES LIMITED - Six Mile Hill Project



Residual detailed Bouguer gravity (2.67g/cc) with gravity model  
Isosurfaces of density:  
+0.075g/cc light blue outer shell, +0.15g/cc in dark blue inner  
Main target areas shown in red



Reduction to Pole magnetic grid with magnetics model  
Isosurfaces of magnetic susceptibility in pink  
Main target areas shown in red

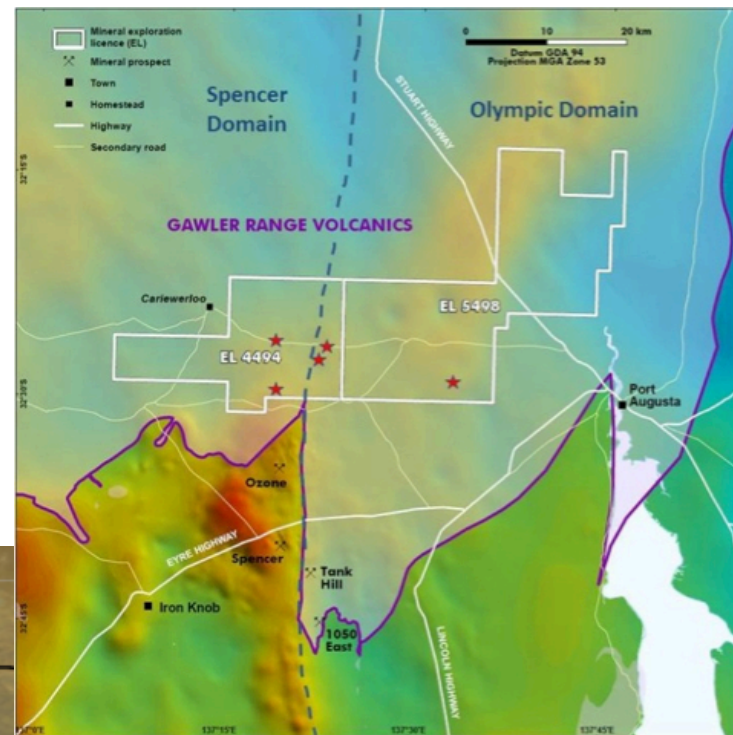
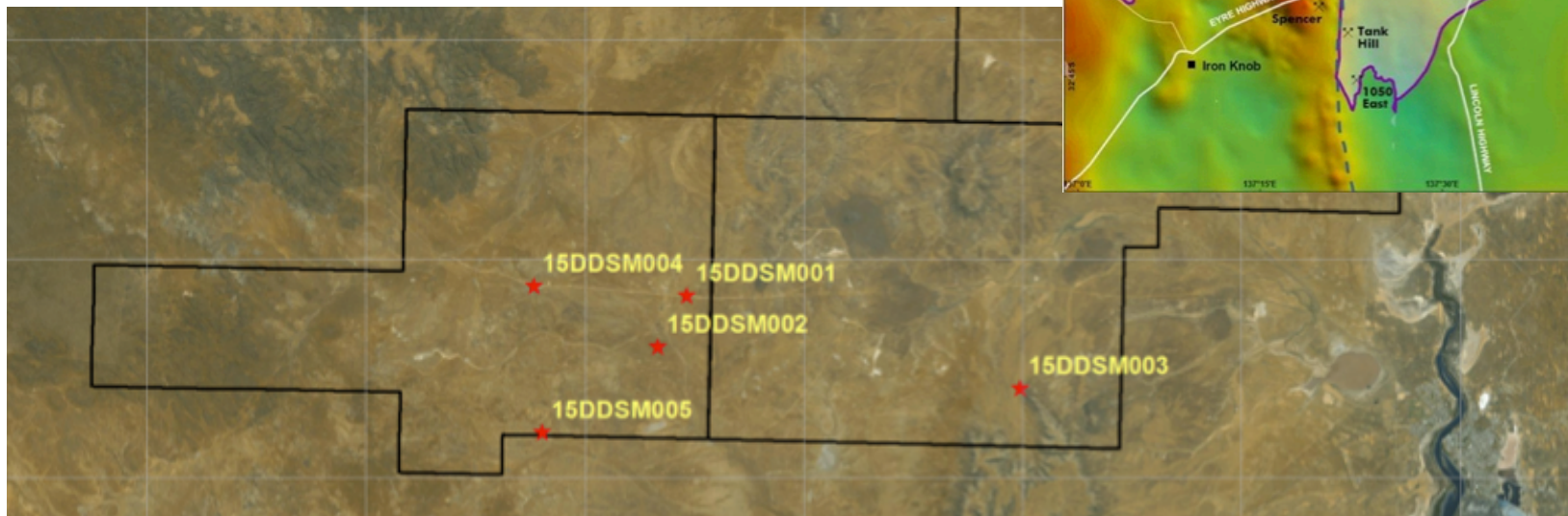
## World Class Targets

- Large density and magnetic features
- Drill targets are less than 250m from surface
- Shallow sediment-hosted copper mineralisation (green) above SM1 target area

# KINGSTON RESOURCES LIMITED - Six Mile Hill Project

## Drilling Campaign to Commence in July

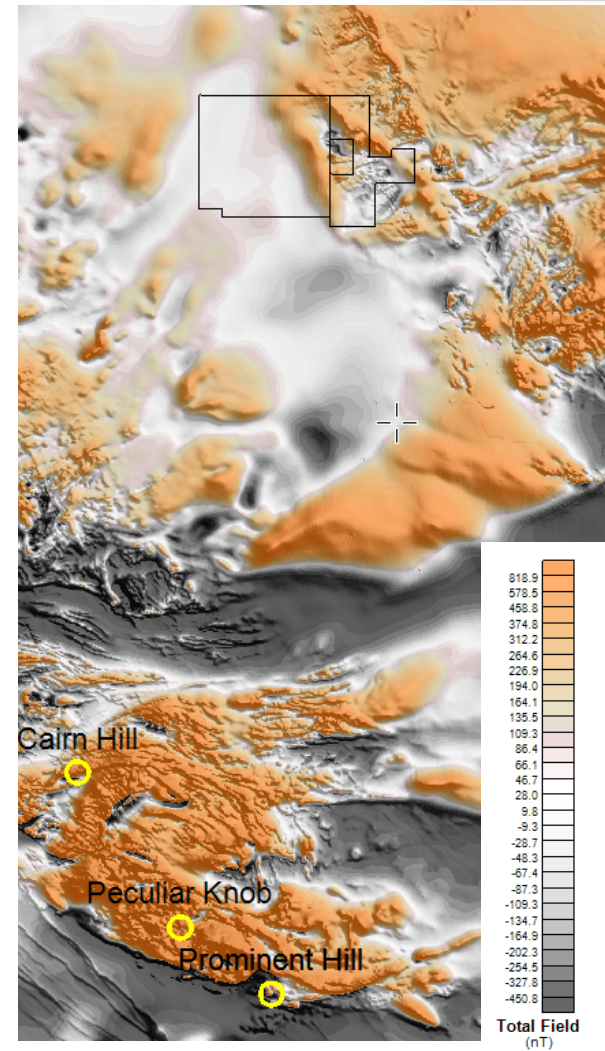
- Five hole diamond drilling program to test top tier targets
- South Australian Government managing environmental and heritage approvals
- Deep Exploration Technologies ready to be deployed to the field



# KINGSTON RESOURCES LIMITED - Cootanoorina Project

## Characteristics of Cootanoorina Project

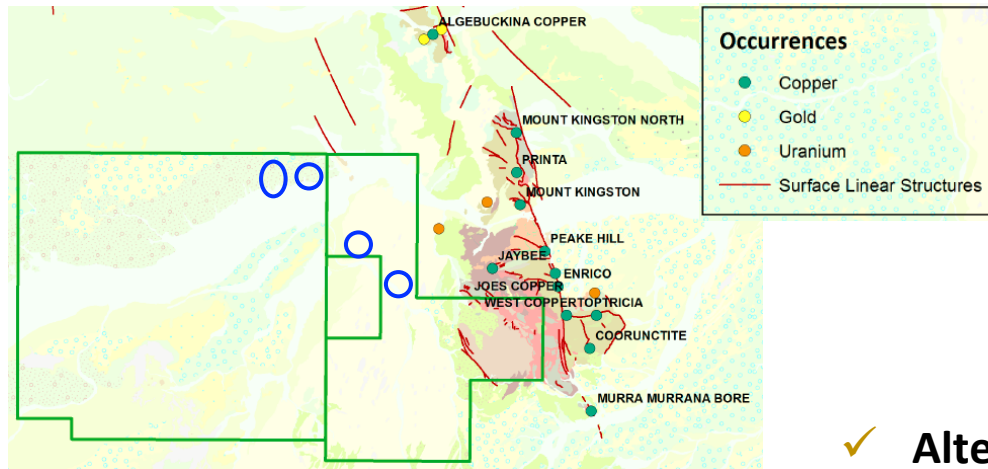
- ✓ **Location** – On the margin of Olympic Domain as defined by Geoscience Australia and GSSA
- ✓ **Structure** - Regional scale NE orientation in regional gravity, magnetics and outcrop geology to east
- ✓ **Mineralisation** – Local Cu mineral occurrences to east with Prominent Hill to the south west. Trace sulphide in veins in drilling with haematite selvage (no sericite)
- ✓ **Magmatism** – Paleoproterozoic volcanics intersected in drilling immediately north of project with granite dykes and sills
- ✓ **Host** – Evidence of uplift from gravity ridge and outcrop to east. Altered Peake Metamorphics intersected in shallow historic drilling.
- ✓ **Alteration** – Potential for hematite alteration as defined in new gravity data and magnetite for regional magnetic data.



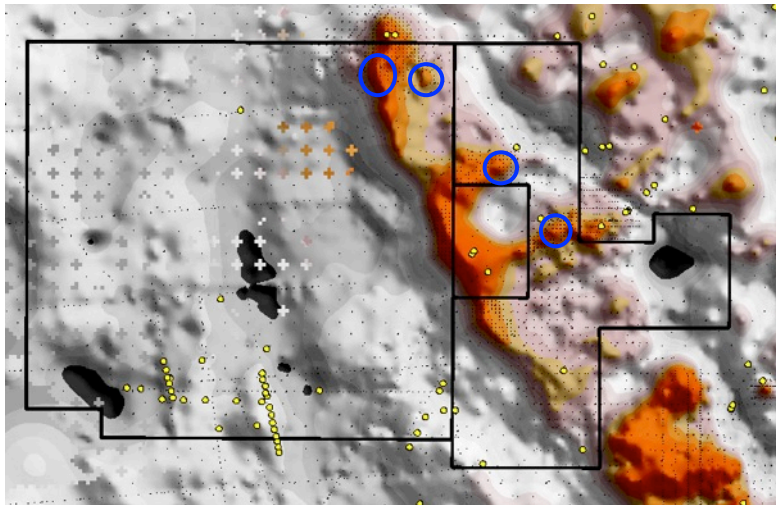
Residual regional magnetics with major deposit locations



# KINGSTON RESOURCES LIMITED - Cootanoorina Project



Surface geology, target locations with mineral occurrences



Tenement width ~46km

## ✓ Mineralisation

- Cu/Au occurrences on surface in older Proterozoic Peake Metamorphics
- Looking for IOCG mineralisation along NW oriented structure under shallow cover to the west of outcropping Peake-Denison Inlier

## ✓ Alteration

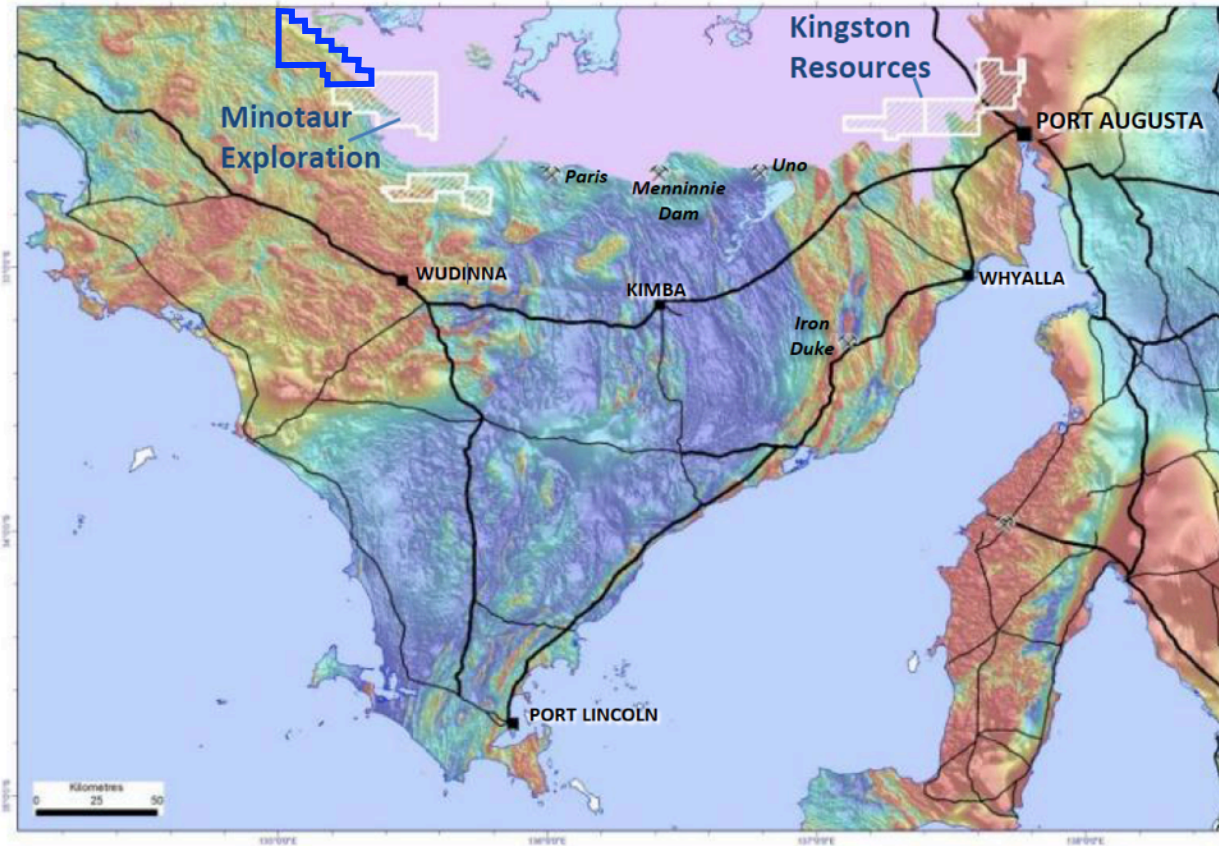
- Residual detailed Bouguer gravity (2.67g/cc) with regional structure
- Gravity features defined by recent detailed ground gravity survey by Kingston (black dots)
- Detailed gravity modelling has confirmed target potential (target features in blue)
- Historical drilling show in yellow

## ✓ SA Government PACE Drill Co-Funding

- \$70,000 funding to test best IOCG target

# KINGSTON RESOURCES LIMITED - Hiltaba Project

## Hiltaba project

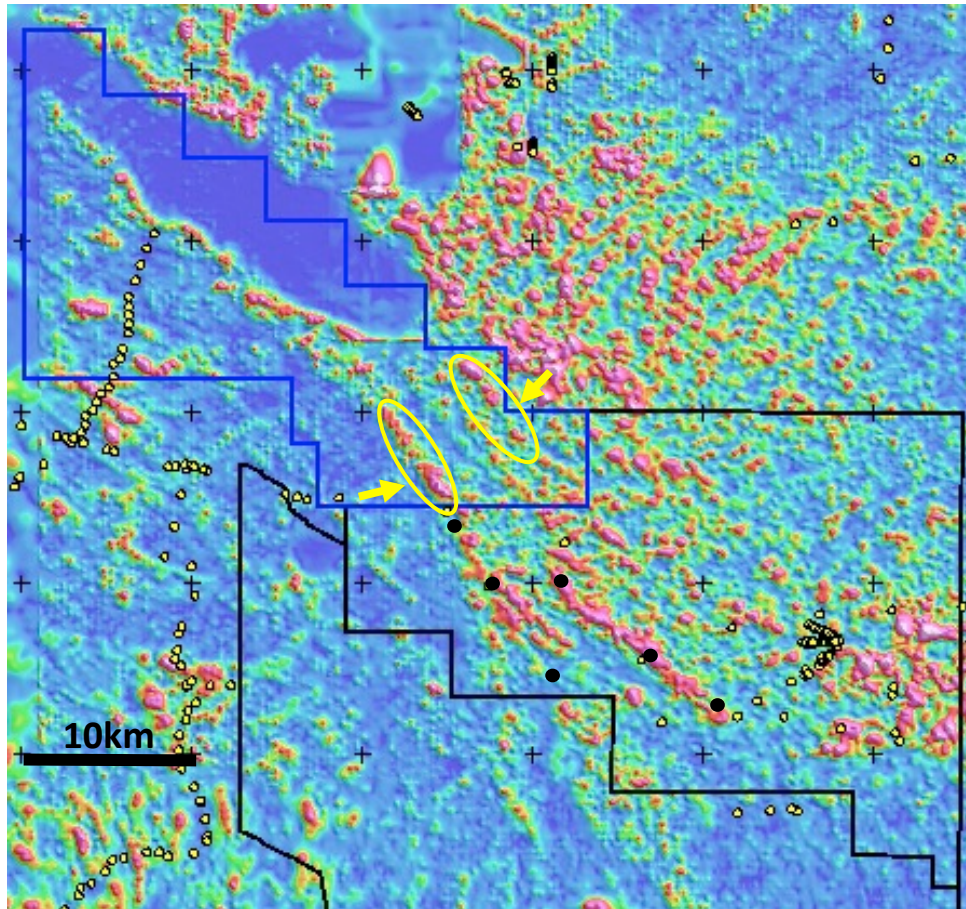


## Hiltaba EL application

- Exploration Licence Application awarded pending grant
- Located at western margin of southern Gawler Ranges / northern Eyre Peninsula
- Emerging new mineral province
- Part of Mineral Systems Drilling Program study area (Stage 2 - Minotaur Exploration)
- Hiltaba Suite granites and Gawler Range Volcanics present

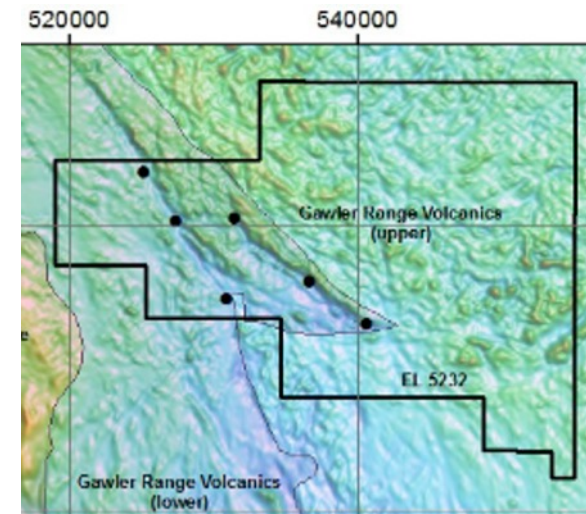


# KINGSTON RESOURCES LIMITED - Hiltaba Project



## Prospective Geophysics

- Analytic Signal magnetic image
- Open file mineral drill holes in yellow
- Kingston zone of interest (yellow) along strike from Mineral Systems Drilling Program targets
- SA government funded Mineral Systems Drilling Program proposed targets (Minotaur Exploration) in black



\*From ASX: MEP presentation 2105



# KINGSTON RESOURCES LIMITED

	JUN	JUL	AUG	SEP	OCT	NOV	DEC	JAN	FEB
SIX MILE HILL Cu-Au	Environ Heritage	MSDP Stage 1 drilling (Kingston)			Assays Analysis				
COOTANOORINA Cu-Au	Magnetic survey		Modelling targets		Environ Heritage			Drilling	Assays Analysis
HILTABA Cu-Au			Tenement granted		MSDP Stage 2 drilling (Minotaur) Kingston tenement along strike			Results analysis	Airborne EM

*Indicative timeline*

## Competent Person Statement

The information in this presentation that relates to results of geophysical exploration is based upon information compiled by Mr Barry Bourne, who is employed as a Consultant to the Company through geophysical consultancy Terra Resources Pty Ltd. Mr Bourne is a fellow of the Australian Institute of Geoscientists and a member of the Australian Society of Exploration Geophysicists. He has proper and relevant experience with the styles of mineralisation as well as the kinds of mineral deposits under consideration and activities undertaken. This is sufficient to qualify him as a “Competent Person” as defined in the 2012 Edition of the Joint Ore Reserves Committee (JORC) Australasian Code for Reporting of Exploration Results, Mineral Resources and Ore Reserves. Mr Bourne consents to the inclusion in the presentation of matters based on information in the form and context in which it appears.

### JORC Code 2012 Reporting

The most recent JORC Code 2012 edition exploration results reporting on the information contained within this ASX Announcement can be reviewed in the “KSN Exploration Update – October 2014” ASX Announcement as released to ASX on 30<sup>th</sup> October 2014.