

Mining Licence Granted at Allotropes Diamond Project

ASX Code: **NWF**

Newfield Resources Limited (“Newfield” or the “Company”) is pleased to announce that it has been granted its first mining licence for its Allotropes Diamond Project in Sierra Leone.

The licence is held by a Newfield local subsidiary company, Allotropes Mining Company Ltd, and covers an area of diamondiferous alluvial (fluvial facies) gravels at the Golu site within the Exploration Licence 15/2012 (Figure 1). The gravels occupy fringing terraces and embayments relating to the ancestral Sewa River system.

The approval of the licence, which by definition is a small scale mining licence, is the culmination of an extensive permitting process. The Company wishes to record its appreciation to the various government agencies in Sierra Leone, the leaders of the Baoma Chiefdom and the local community for their support during this process.

Bulk samples of alluvial gravels undertaken by Allotropes and previous explorers on EL15/2012 have returned grades varying between 5.21 carats per hundred tonne (“cpht”) and 155.89 cpht (ASX announcement dated 29 November 2013*). The wide variance in the grade of the bulk sampling pits is typical for alluvial diamond deposits and reflects the nuggetty distribution inherent in alluvial depositional environments.

The granted mining licence is centred on the area of the Company’s more recent Golu bulk sampling program, as reported in ASX announcement dated 27 June 2014*, which returned 32.1 carats from 74 tonnes of basal gravel for an average recovered grade of 43.51 carats per hundred tonne (cpht).

The Company’s exploration program at the Golu site has outlined an area of lower terrace palaeo-fluvial gravels, over an approximate three kilometre long reach of the true right-hand (northern) bank of the Modern Sewa River. The fluvial gravels vary in thickness from 0.15m to 0.80m and extend up to 100m inland. A strong footwall control, providing numerous trap-sites, is evident in the water-bevelled floor-rocks.

The Company will immediately commence mining activities within the mining licence with the aim of extracting the prospective gravel horizons for processing through the recently commissioned Dense Media Separation plant.

The Company will implement strong geological controls in the mining operation to minimise mining dilution and to assess local controls on grade distribution within the gravel horizons.

The granting of the Golu mining licence marks an important milestone for Newfield as the Company converts its alluvial diamond exploration achievements into near term diamond production opportunities.



Photograph of diamonds recovered from processing of bulk samples from Newfield Resources Ltd’s Allotropes Diamond Project in Sierra Leone.

ASX Release: 1 July 2015

ACN 153 219 848

DIRECTORS

Mr Bryan Alexander
(Executive Director)

Mr Anthony Ho
(Executive Director)

Mr Joshua Letcher
(Executive Director)

Mr Murray Kornweibel
(Non-Executive Director)

Ms Sanny Nanang
(Non-Executive Director)

CAPITAL STRUCTURE

Shares on Issue: 184.1M
Options on Issue: 39M

In parallel with the mining activities at Golu, the Company continues to implement extensive alluvial diamond exploration and resource definition programs across all five exploration licences, which comprise the Allotropes Diamond Project.

*In accordance with Listing Rule 5.23.2, the Company confirms in the subsequent public report that it is not aware of any new information or data that materially affects the information included in the relevant market announcement and, in the case of estimates of mineral resources or ore reserves, that all material assumptions and technical parameters underpinning the estimates in the relevant announcement continue to apply and have not materially changed.

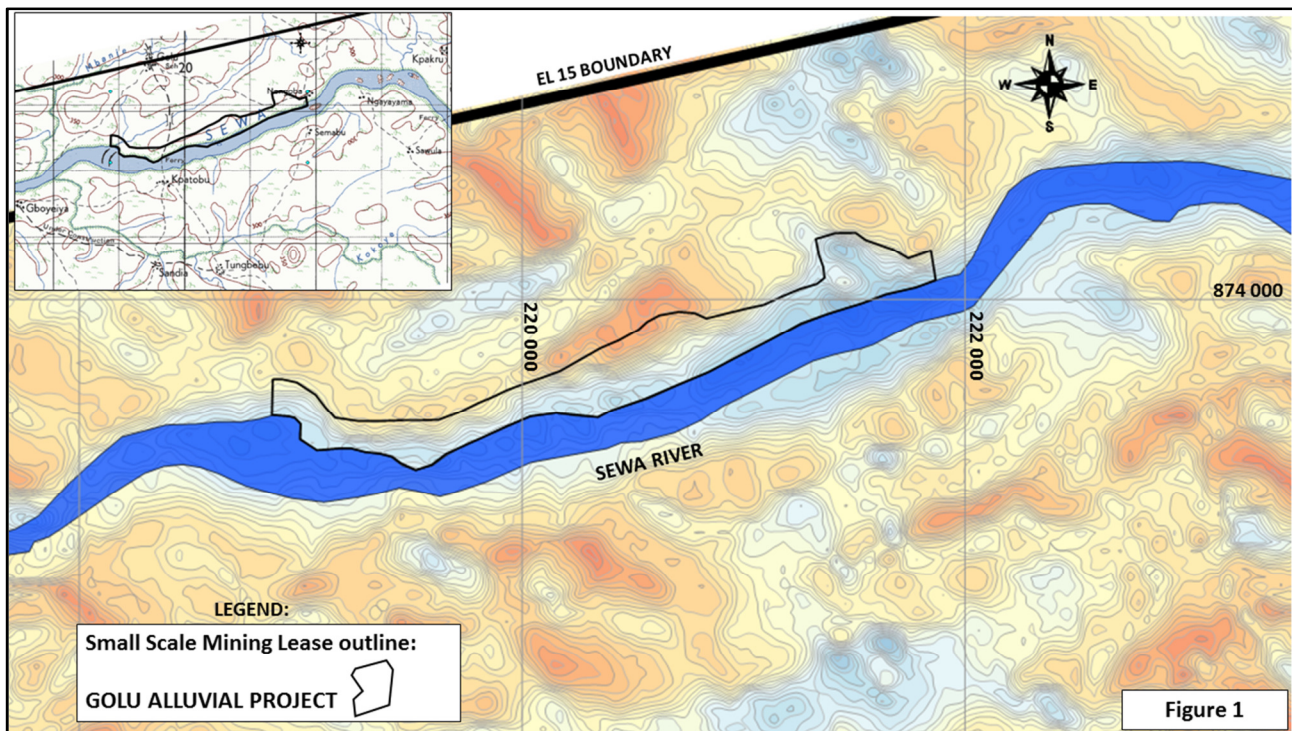


Figure 1 – Location plan of the Golu Small Scale Mining Licence overlying a contoured Digital Terrain Model (DTM)

COMPETENT PERSON'S STATEMENT- DIAMONDS

The information in this report that relates to Exploration Results, Mineral Resources or Ore Reserves on the Allotropes Diamond's Sierra Leone Diamond Project, is based on information compiled by Mr Richard Hall who is a Fellow of the Australasian Institute of Mining and Metallurgy and a member of the Australian Geological Society and who is an employee of Newfield Resources Limited.

Mr Hall has sufficient experience which is relevant to the style of mineralisation and type of deposit under consideration and to the activity which he is undertaking, to qualify as a Competent Person as defined in the 2012 Edition of the "Australasian Code for Reporting of Exploration Results, Mineral Resources and Ore Reserves". Mr Hall consents to the inclusion in this ASX release of this information in the form and context in which it appears.