



KALGOORLIE

WEST AUSTRALIAN GOLDFIELDS WEST AUSTRALIAN NICKELFIELDS

JULY 2015

David Crook
Managing Director



Disclaimer and Competent Person's Statement

- This presentation is provided to you for the sole purpose of providing preliminary background technical, financial and other information to enable you to review the business activities of Pioneer Resources Limited ("Pioneer" or "the Company").
 - The material provided to you does not constitute an invitation, solicitation, recommendation or an offer to purchase or subscribe for securities.
 - This presentation may contain "forward looking statements" which are made in good faith and are believed to have reasonable basis. However, such forward looking statements are subject to risks, uncertainties and other factors which could cause the actual results to differ materially from the future results expressed, projected or implied by forward looking statements.
 - The information within this report as it relates to geology and mineralisation was compiled by Mr. David Crook who is a full time employee of Pioneer Resources Limited, a member of The Australasian Institute of Mining and Metallurgy (member 105893) and is a Competent Person as defined by the 2012 JORC Code, having five years experience which is relevant to the style of mineralisation and type of deposit described in the Report. This person consents to the inclusion of this information in the form and context in which it appears in this report.
-
- Note 1. (Fairwater) Refer to a Company announcement to ASX dated 21 July 2014, 7 January 2015, 16 February 2015, 5 March 2015, 13 April 2015, 5 June 2015, 6 July 2015.
 - Note 2. (Blair) Slide 20 - Drill results from Marshall, Leo Dam under the JORC Code 2004. Other information disclosed under the JORC Code 2012 in various announcements including 20 May 2014, 27 January 2015, 18 May 2015
 - Note 3. (Acra) Refer to the Company's Quarterly Activities Report ending 31 December 2013, 31 January 2014, and the Company's announcements dated 16 April 2014, 22 October 2014, 26 June 2015.
 - Note 4. (Juglah Dome) refer to earlier Pioneer announcements to ASX where these results were reported under the JORC 2004 guidelines, including 20 July 2012 and 5 October 2012 and Company announcements dated 14 July 2014 and 24 October 2014.
-
- The Company is not aware of any new information or data that materially affects the information included in this Presentation



Investment Highlights

■ FOCUSED

- Projects within the world class Eastern Gold (and Nickel) fields

■ FUNDED

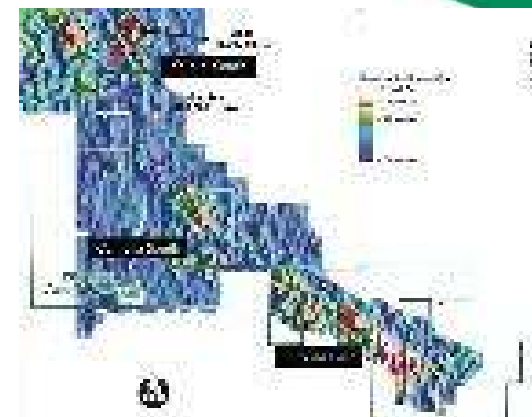
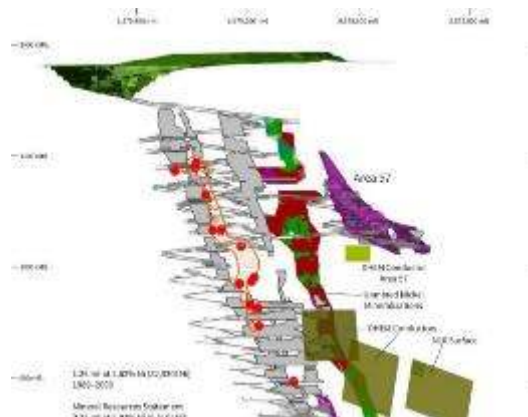
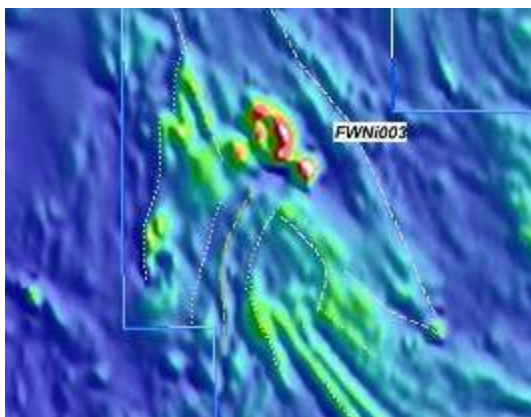
- \$2.61 million cash March 2015 Quarterly
- Q3 budget \$0.6 million

■ ACTIVE

- (but very mindful of our cash)
- 3 Project Strategy:
 - Fairwater – Albany Fraser Nickel
 - Blair Nickel Mine
 - Acra Gold



Pioneer at a Glance



- Hottest WA property
- the Albany Fraser Orogen
- Priority FWNi003 target
- Nickel exposure through 100% ownership of the Blair Nickel Mine.
- 11 km of under-explored basal contact around the Blair Dome
- Standard Goldfields gold project
- Warehoused for gold by nickel explorers
- Targets over 20km
- Recognized by CRC targeting specialists



A Well-Credentialed Board



Craig McGown – Chairman (Finance)

- An investment banker with over 35 years' experience consulting to companies in Australia and internationally, particularly in the natural resources sector.
- The former Chairman of DJ Carmichael and currently with New Holland Capital.



David Crook – Managing Director (Geology)

- Founding Managing Director since 2003.
- A geologist with over 30 years' experience in the mining industry, including senior exploration, mining and management roles with a number of Australian and international companies.
- 25 years experience in the Kalgoorlie District



Allan Trench – Non-Executive Director (Geophysics, Management, Academia)

- A mineral economist, geophysicist and business management consultant.
- Professor CET at UWA and Curtin Graduate Business School.
- Perth representative CRU Strategies.



Wayne Spilsbury – Non-Executive Director (Geology)

- A geologist with over 35 years of experience including 28 years with Teck Cominco Limited - former General Manager, Exploration – Asia Pacific.
- Has worked on gold and base metal projects in Western Canada, the United States, Asia and Australia.

Corporate Snapshot

FOCUSED

Western Australia-focused explorer

FUNDED

\$2.61 million in cash EO Mar 2015

ACTIVE

Financial capacity to explore and make discoveries

LEVERAGE

Fraser Range announcements stir the market. Liquidity is up.

Current share price	1.8 cents
Shares on issue	644.1 million
Unlisted options	45 million
12-month range	0.8 – 3.0 cents
Cash <small>(approx EO March 2015)</small>	\$2.61 million
Market capitalisation	\$11.6 million



Geographic Focus Eastern Gold Fields

Eastern Gold Fields (equally Eastern Nickel Fields)

Key Projects and Locations

- Fairwater Nickel Project
 - Plus new Fleming Grove tenements near Mt Ridley
- Blair Nickel Mine Extensions
- Acra Gold Project

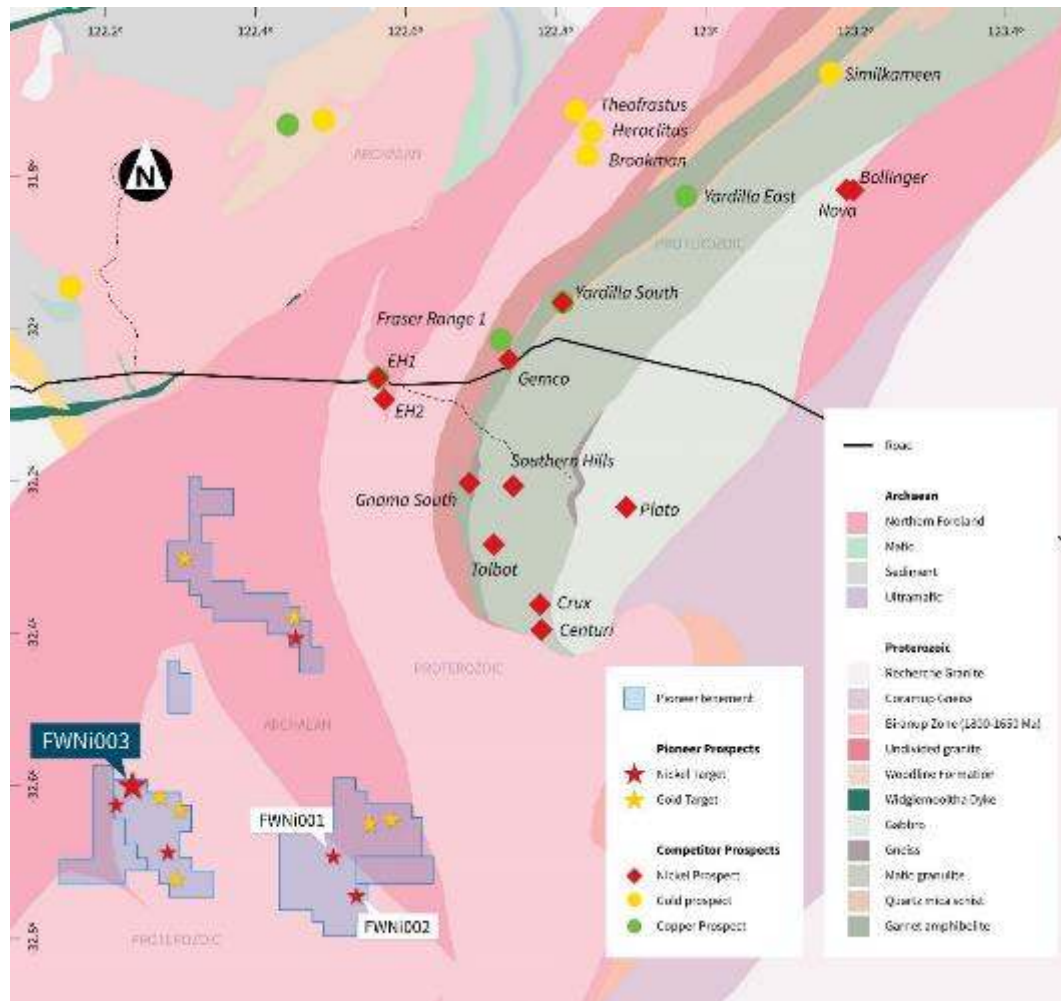


Geographic Focus Eastern Nickel Fields

Fairwater Nickel Project Albany Fraser Orogeny



Geographic Focus : Albany Fraser Fairwater Project (PIO 75%)



What we know...

- ✓ Ground position - 742 km²
- ✓ 105 km SW of Nova- Bollinger nickel discoveries
- ✓ Both Archean and Proterozoic Terrains
- ✓ 2013: First Geochem-EM drill target identified at FWNi001
- ✓ 2014: FWNi003 (and others) emerge with geochemistry indicating mafic-UM stratigraphy present
- ✓ 2015: First pass of drilling identifies differentiated ultramafic rocks

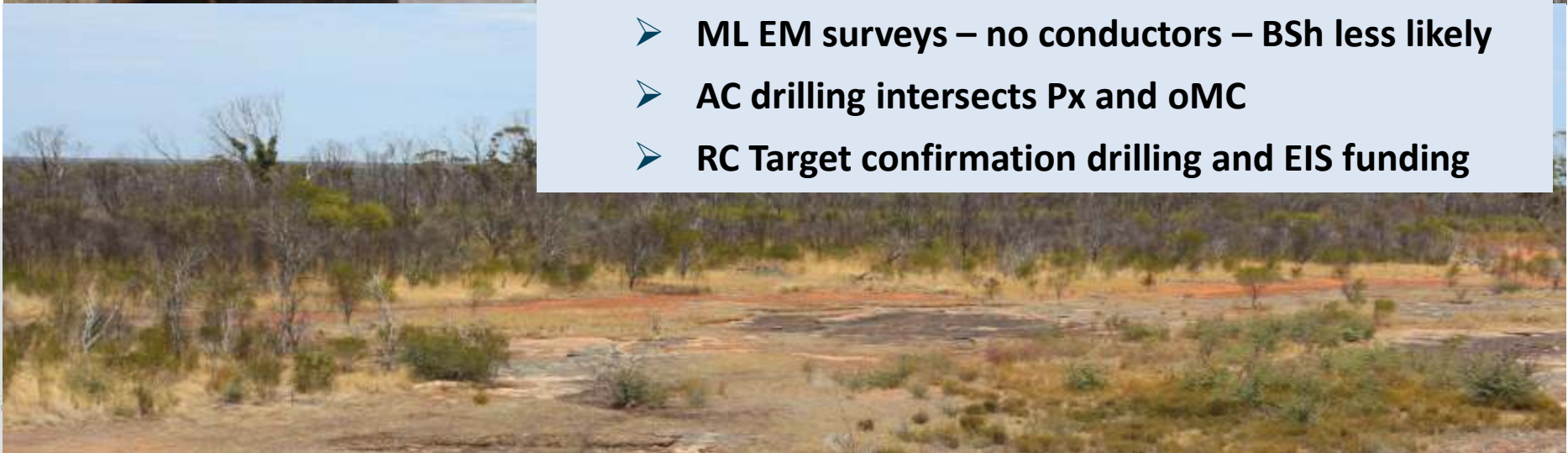
Emerging Fraser Range Nickel

FWNi003



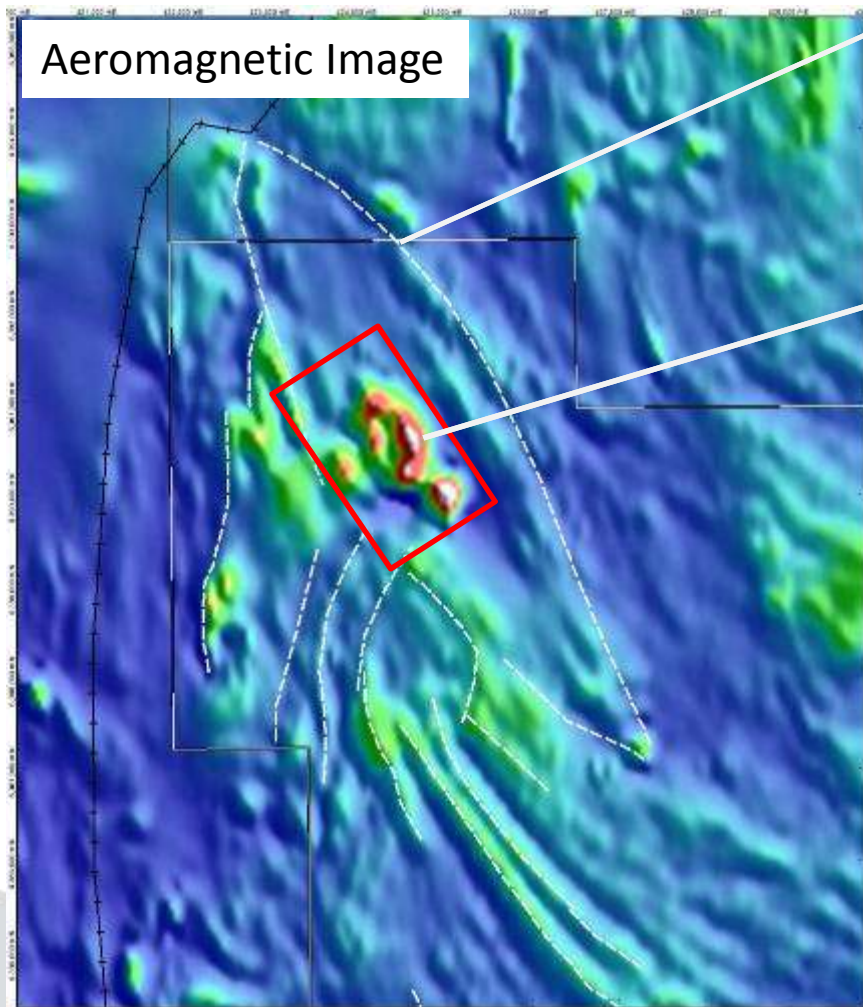
✓ 2015: Work programs

- Soil geochemistry is first pass tool – on-going
- ML EM surveys – no conductors – BSh less likely
- AC drilling intersects Px and oMC
- RC Target confirmation drilling and EIS funding



Emerging Fraser Range Nickel

FWNi003



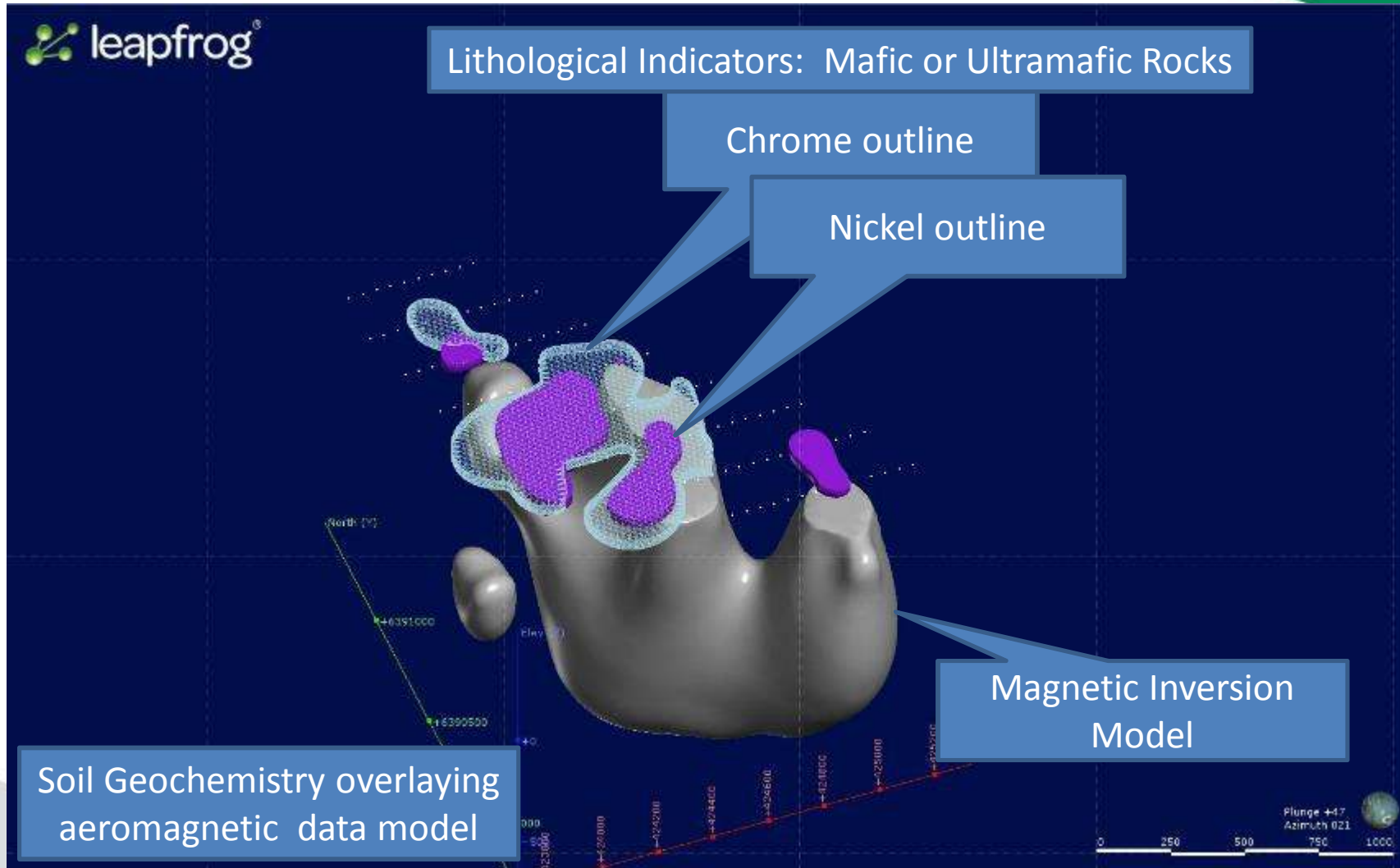
Aeromagnetic Imagery shows an 8 kilometre long, NW-trending oval structure

Internal 2 kilometre long core of clustered, chrome-anomalous, magnetic rocks represents FWNi003.

- Geometry: Proterozoic-aged oval geological structure
- Age Relationship: tramline stratigraphy disrupted
- Geophysics and Geochemistry: multiple internal magnetic bodies with coincident anomalous Ni and Cr, Cu and PGE
- Scale: FWNi003 structure strike length is 8 kilometres
- Regional Structure: within 4 km of a major thrust fault

Emerging Fraser Range Nickel

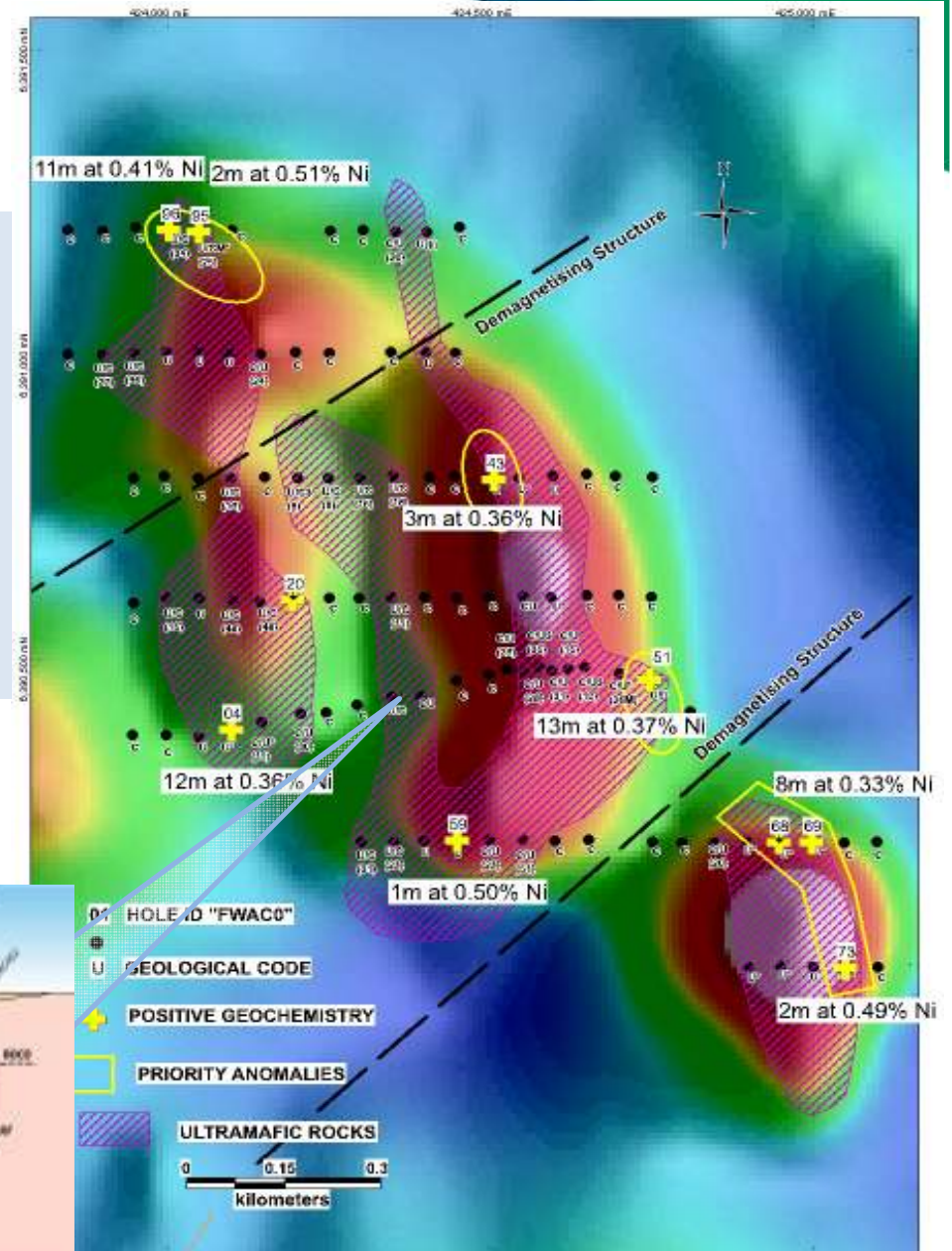
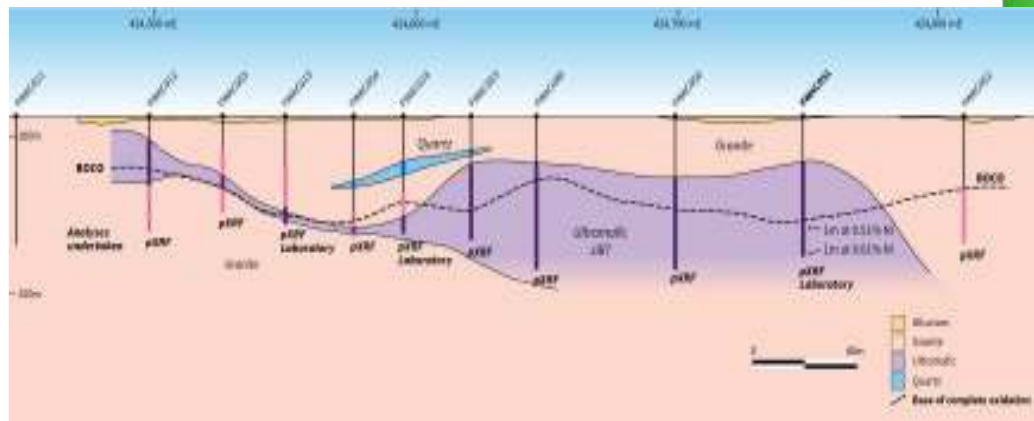
FWNi003



FWNi003

✓ **2015: Work programs**

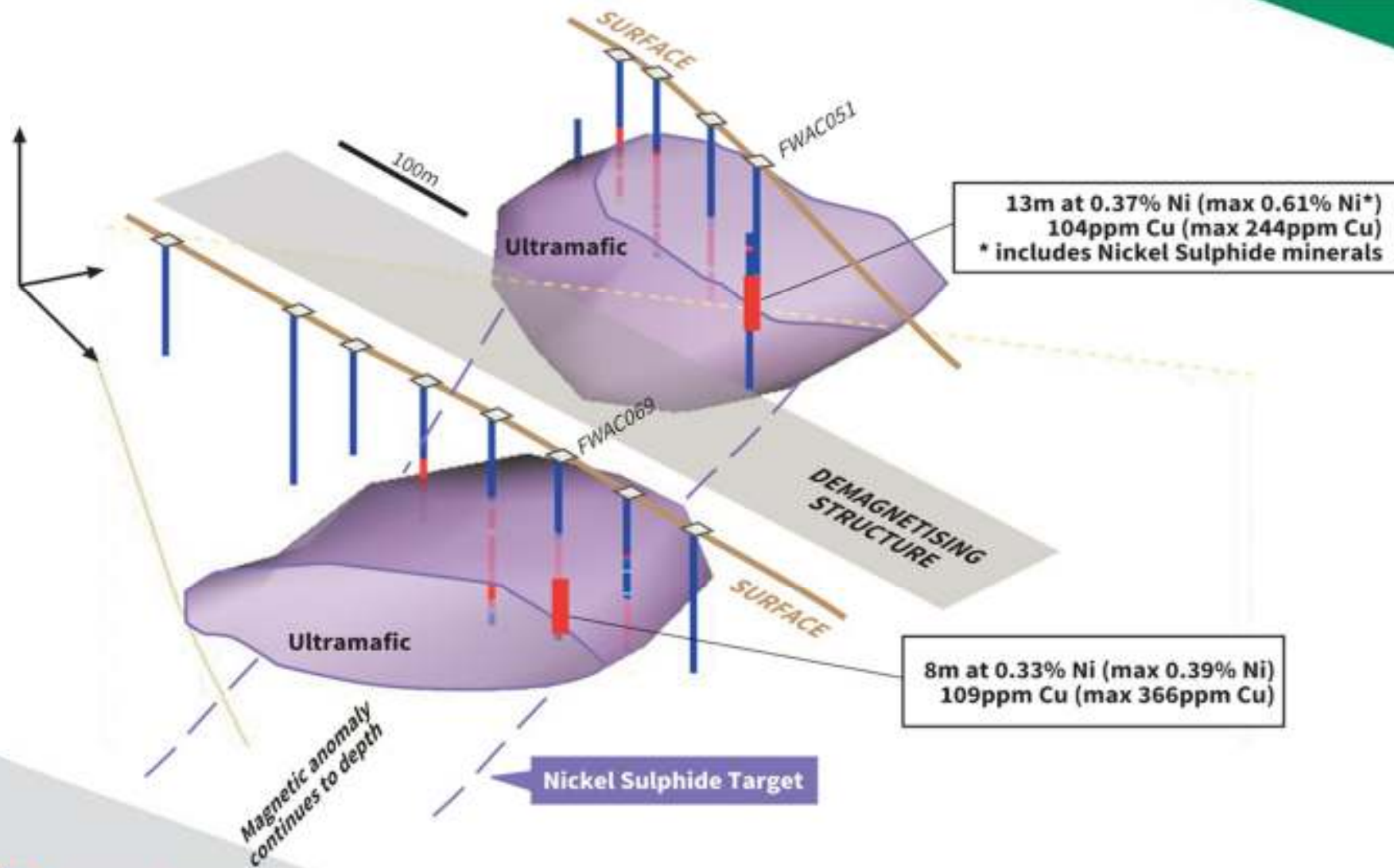
- **Soil geochemistry is on-going**
- **ML EM surveys – no conductors – BSh less likely**
- **AC drilling intersects Px and oMC**
- **RC Target confirmation drilling and EIS funding**



Refer to Note 1 when considering results.

Emerging Fraser Range Nickel

FWNi003



Geographic Focus Eastern Nickel Fields

Blair Nickel Mine and Blair Dome Exploration



Geographic Focus: Kalgoorlie Golden Ridge Au-Ni Project



Mine Status...

- ✓ 20km from Kalgoorlie, 30km from Kambalda
- ✓ 100% owned by Pioneer
- ✓ Offtake agreement with BHP-B
- ✓ Mine closed due to low nickel prices in 2008
- ✓ Remnant and potential mineralisation modelling.
Mineral Resource statement: 222,710t at 2.92% Ni

*Refer to Note 2 when
considering results.*



A feature of Kambalda-style nickel sulphide deposits is their persistence with depth

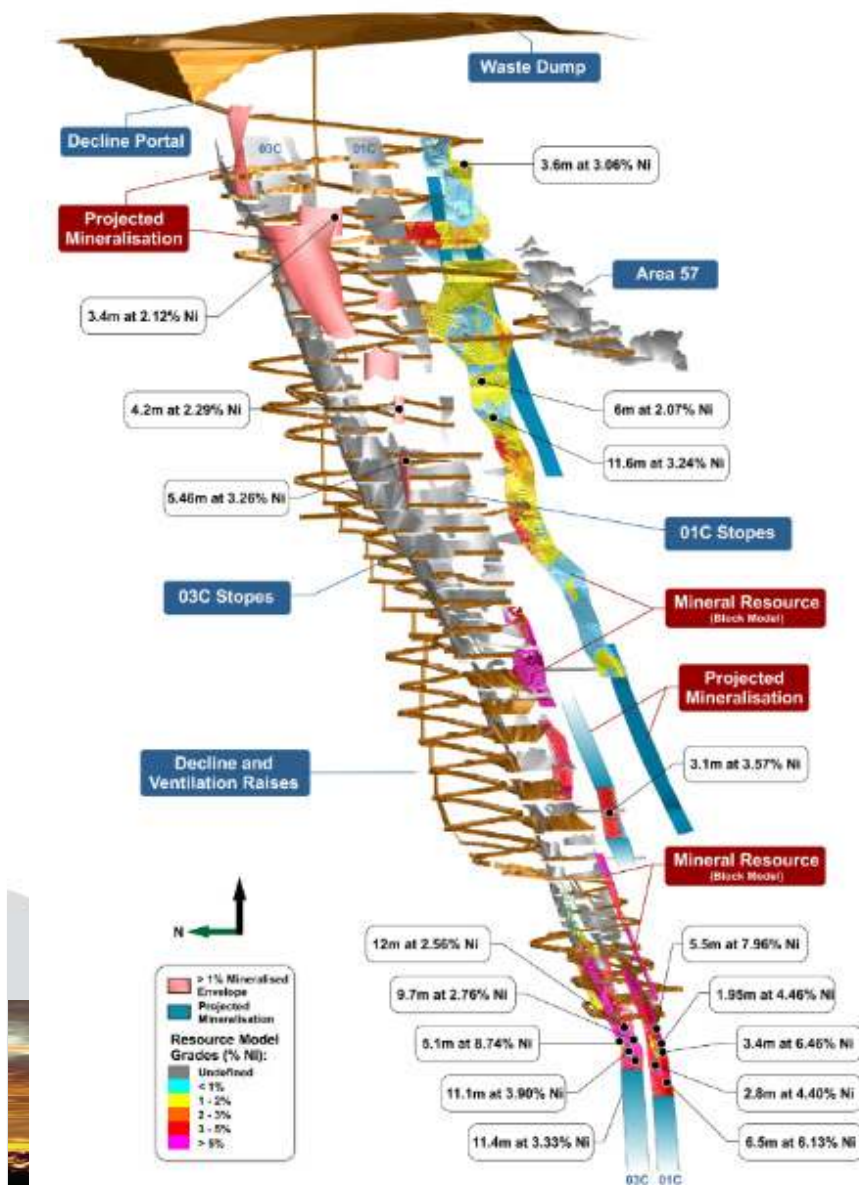
The Blair Mine...

- ✓ Mineral Resource estimate :

Class	Tonnes	Ni	Ni Metal
	(t)	(%)	(t)
Indicated	75,560	4.37	3,300
Inferred	147,150	2.18	3,210
Total	222,710	2.92	6,510

Note: Appropriate rounding applied

- ✓ High grade mineralisation (>4% Ni at the base of the mine development - 950m)
- ✓ Shallow drill intercepts on endowed surfaces near the mine are the focus of the expansion strategy

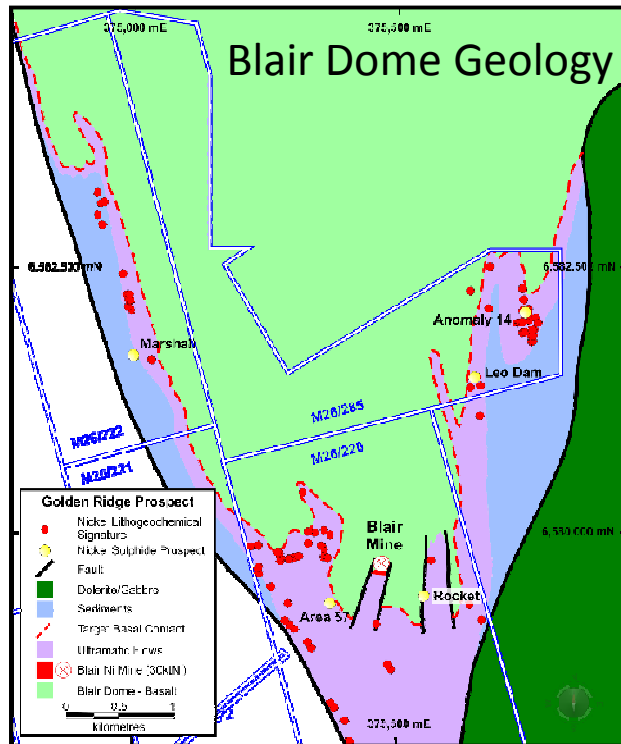


02 Surface Drill Intercepts

GOD018: 8.5m at 1.30% Ni
 BLD049: 1.05m at 5.99% Ni
 BU07_19: 4.2m at 2.62% Ni
 BU11_01: 5.46m at 3.73% Ni
 AMUG069: 0.98m at 6.87% Ni

Refer to Note 2 when considering information.



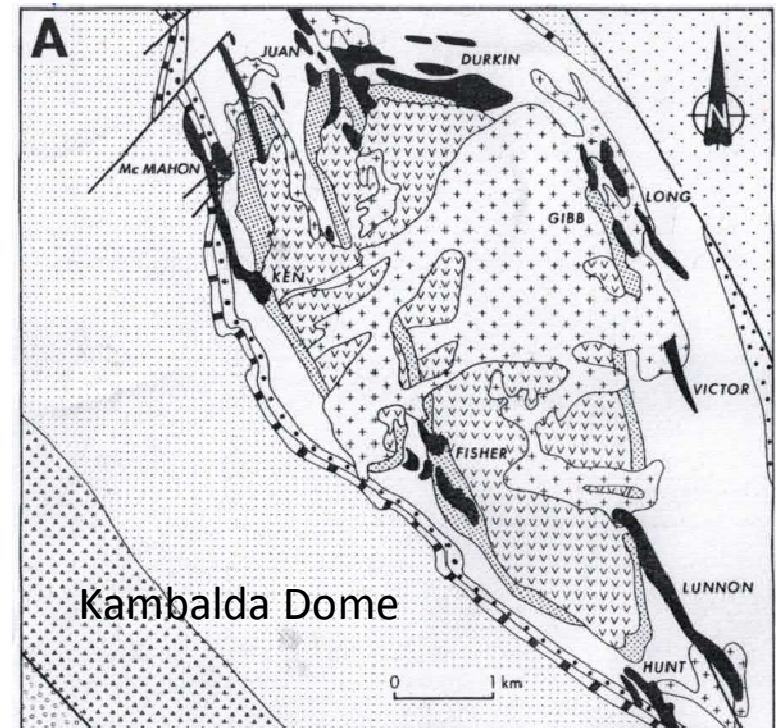
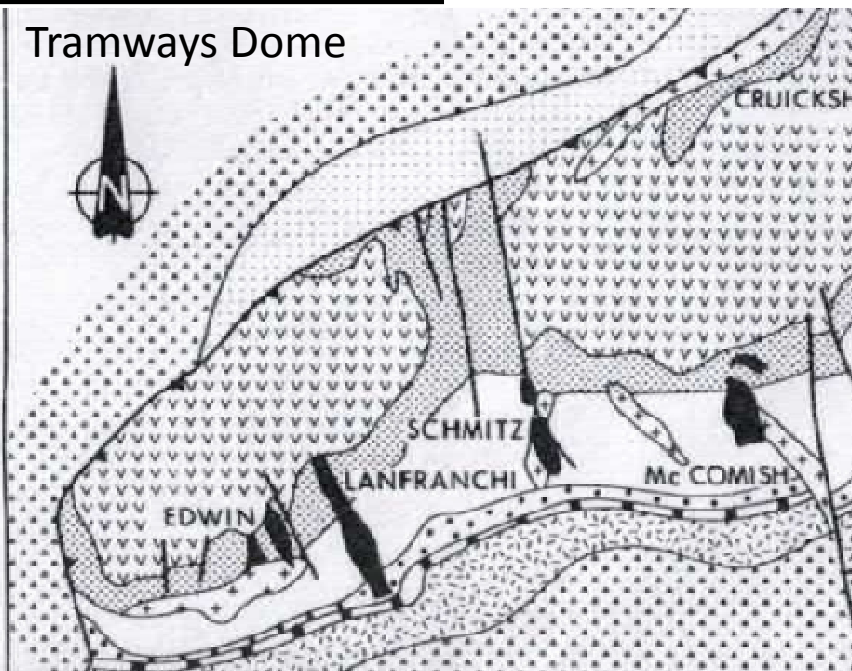


The Blair Dome is a similar size as the Kambalda and Tramways Domes

The surface trace of the Blair Dome is approximately 11 km long within Pioneer's tenements.

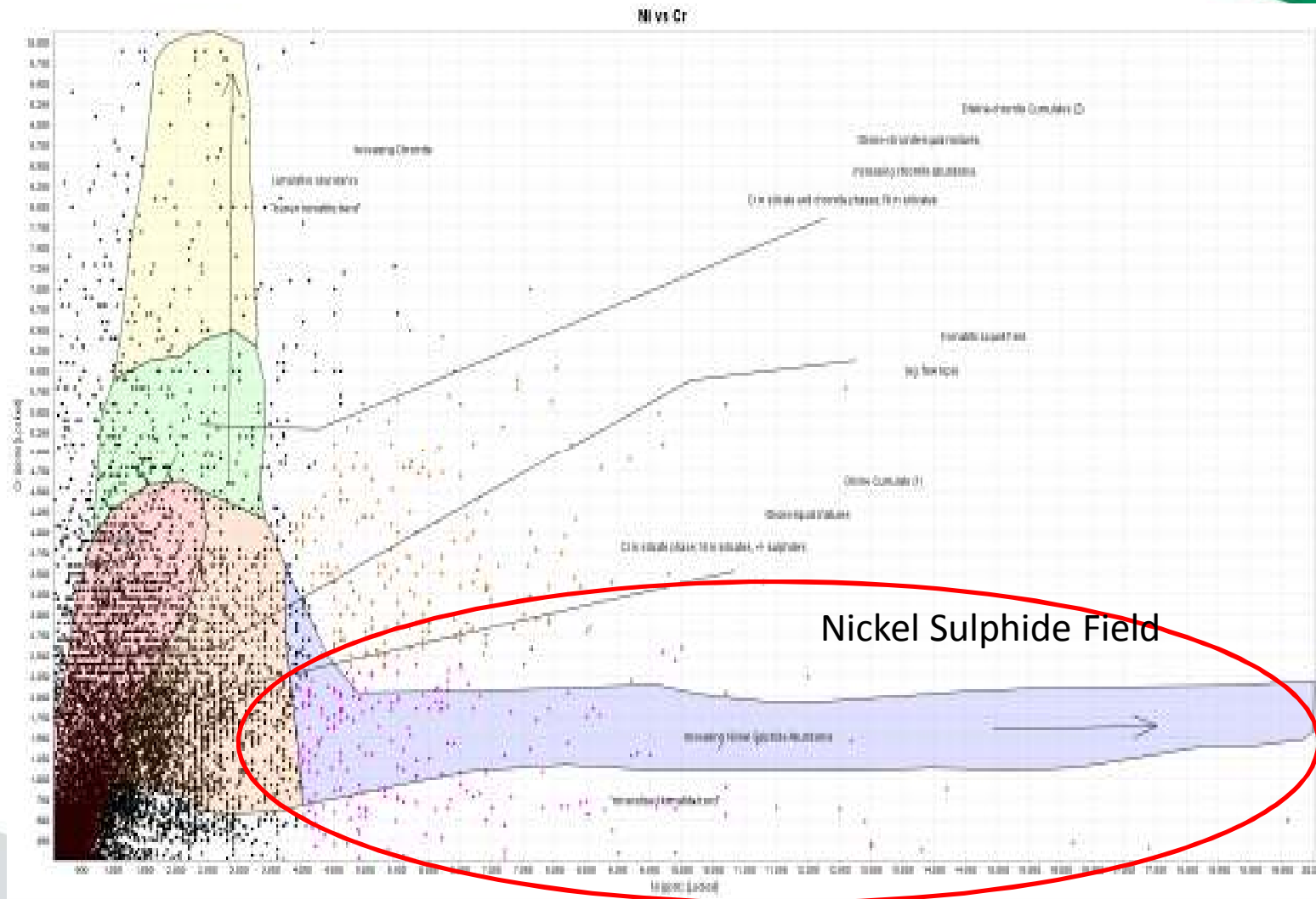
The scale for each map of the Domes shown here are the same

Tramways Dome



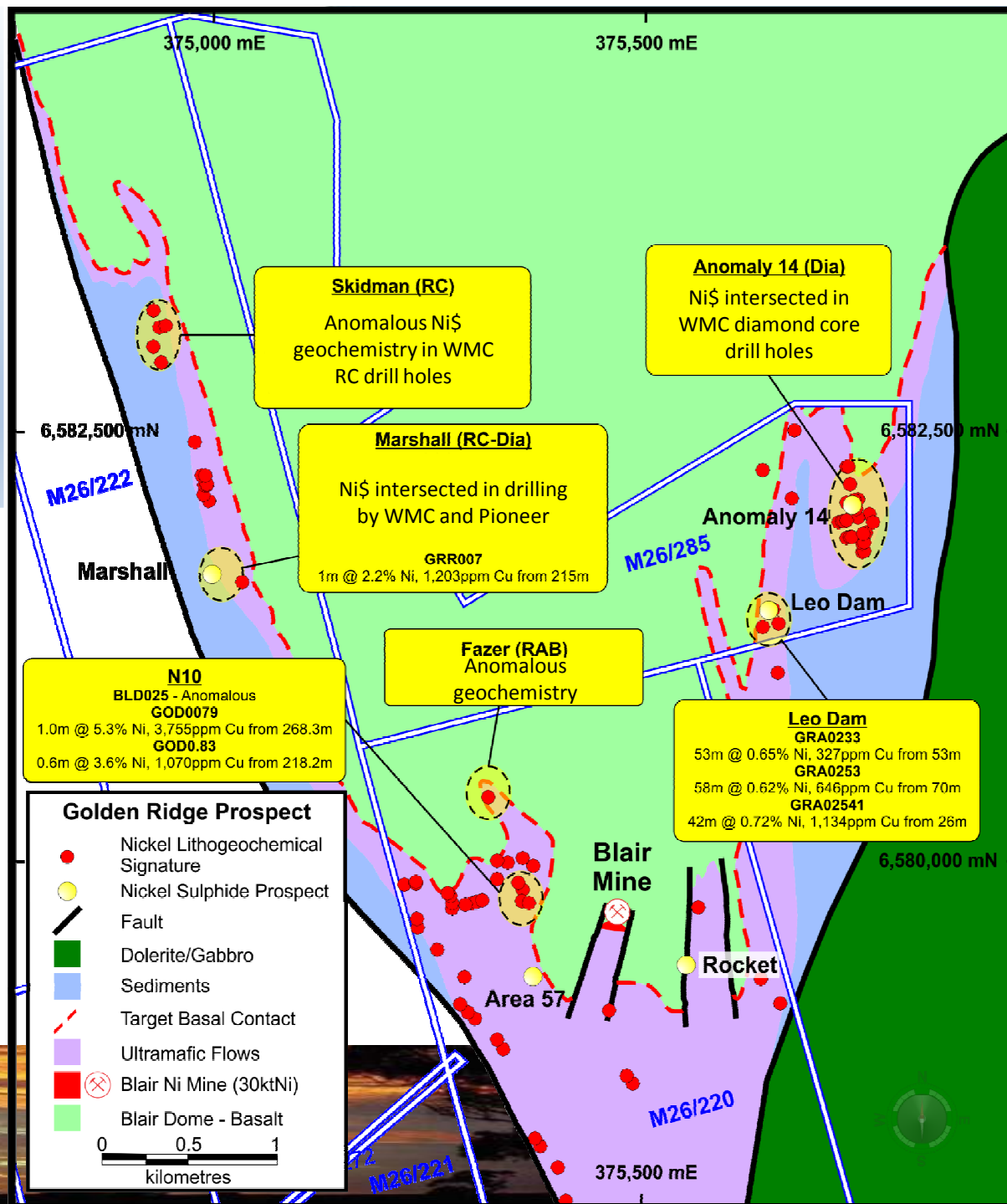
Kambalda Dome

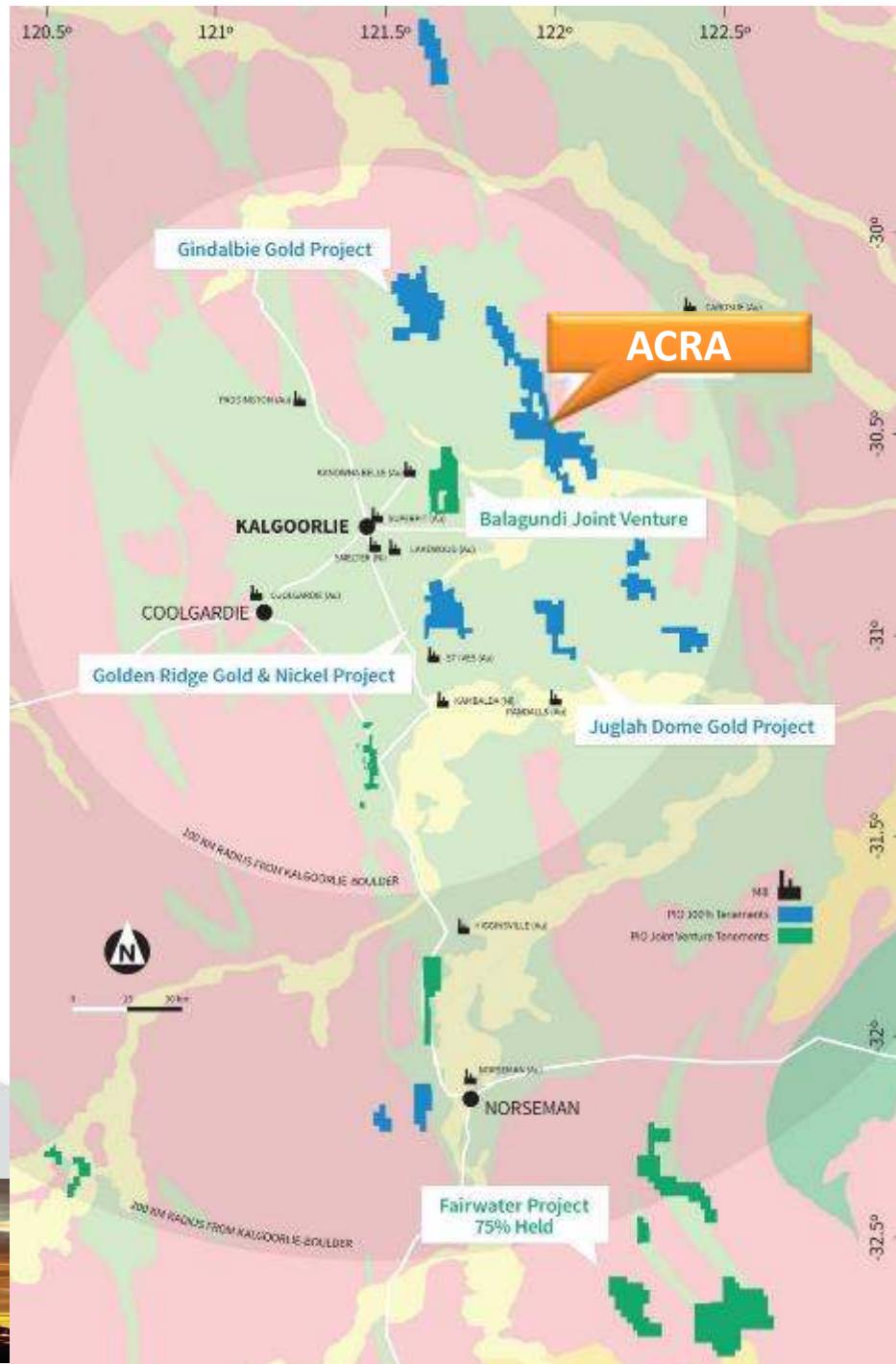
Blair Dome Exploration



The Blair Dome Provides 11km of Under-explored UM Basal Contact with NiS Already Identified

Refer to Note 2 when considering results.





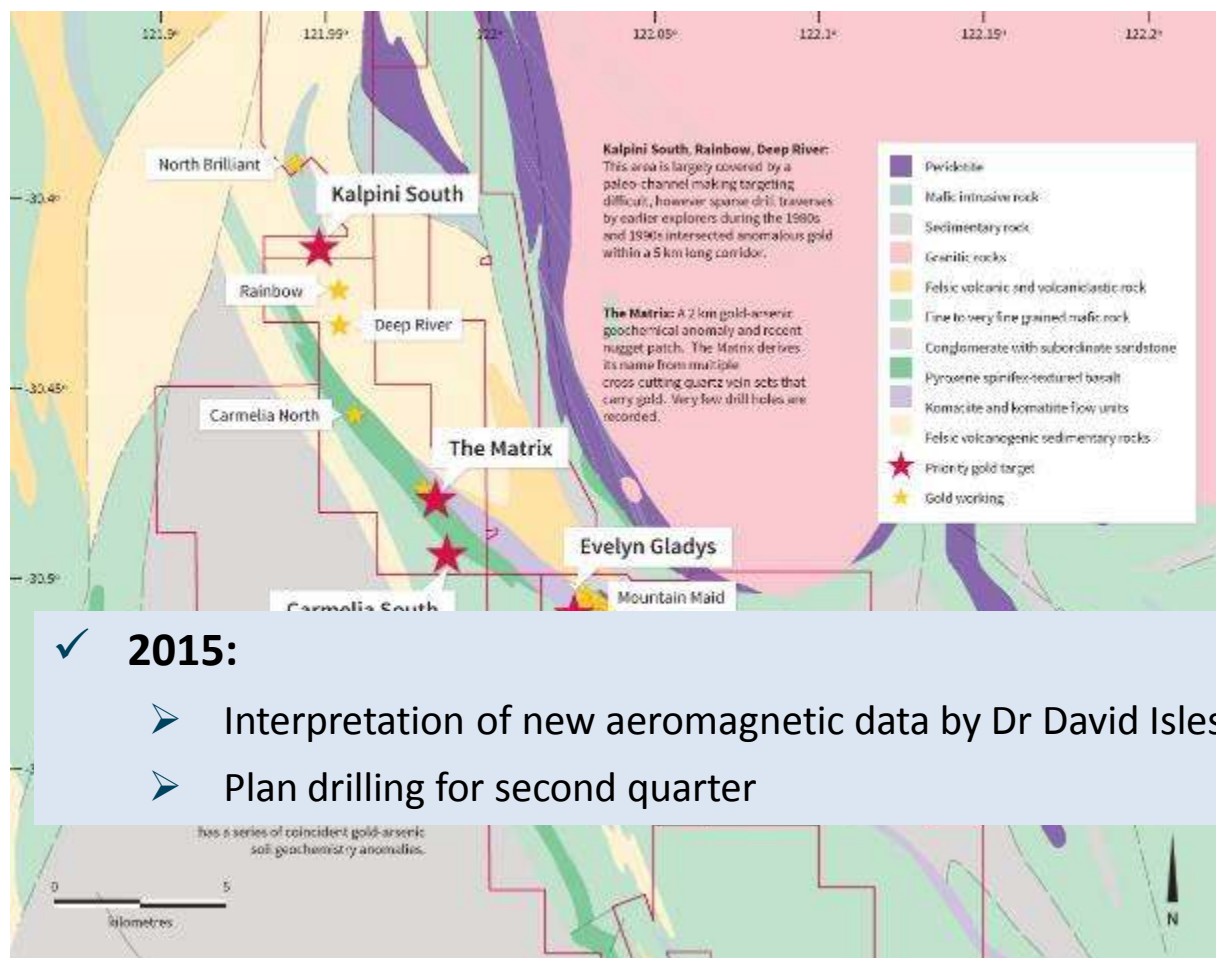
Geographic Focus Eastern Gold Fields

Acra Gold Project



Acra Gold Project

continues to excite



✓ 2015:

- Interpretation of new aeromagnetic data by Dr David Isles
- Plan drilling for second quarter

Drilling Results confirm gold endowment.

Kalpini South:

KSRC004: 10m at 6.38g/t from 61m
 KSRC005: 9m at 5.31g/t from 36m
 KSRC007: 15m at 2.93 from 94m
 KSRC018: 12m at 2.62g/t from 98m

Jubilee East:

JERC002: 13m at 2.84g/t from 27m
 JERC003: 2m at 12.42g/t from 57m
 JERC007: 4m at 8.1g/t from 34m
 JERC010: 7m at 2.6g/t from 101m
 JERC038: 8m at 2.14g/t from 52m

Camelia South - Regolith:

CSRC002: 3m at 3.68g/t from 42m
 CSRC003: 3m at 4.34g/t from 45m
 CSRC012: 4m at 2.48g/t from 60m
 CSAC018: 6m at 4.39g/t from 57m
 CSAC028: 6m at 3.77g/t from 96m

Refer note 3 when considering results

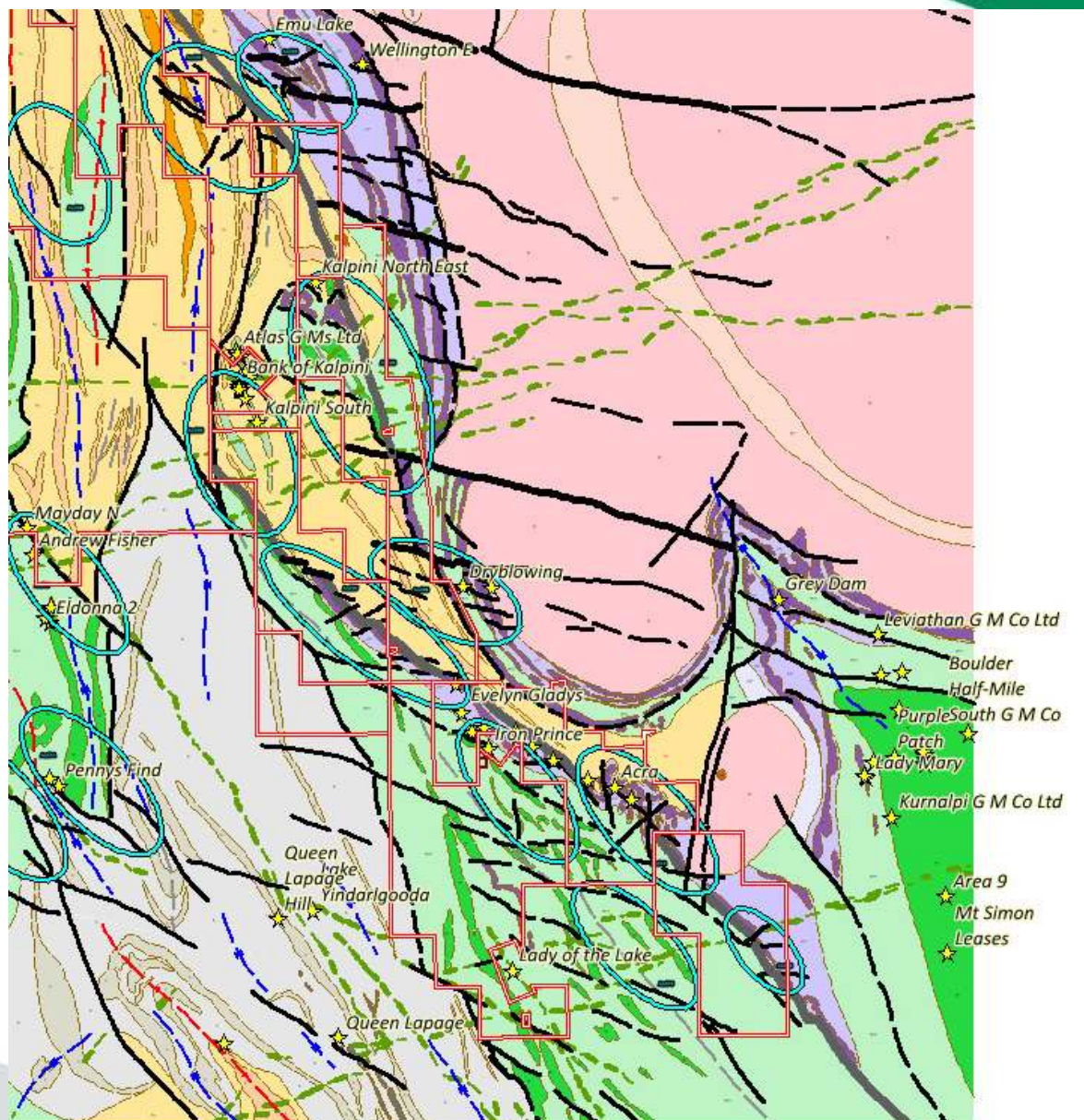
Acra Gold Project

continues to excite

Work by D Isles, an aeromagnetic data specialist, has highlighted areas for initial work.

Proof of concept work will initially include:

- Securing new ground
- Soil Geochemistry
- Aircore Drilling.
- In addition, further drilling is scheduled at the Kalpini South Prospect.
- Refer note 3 when considering results



Acra Gold Project

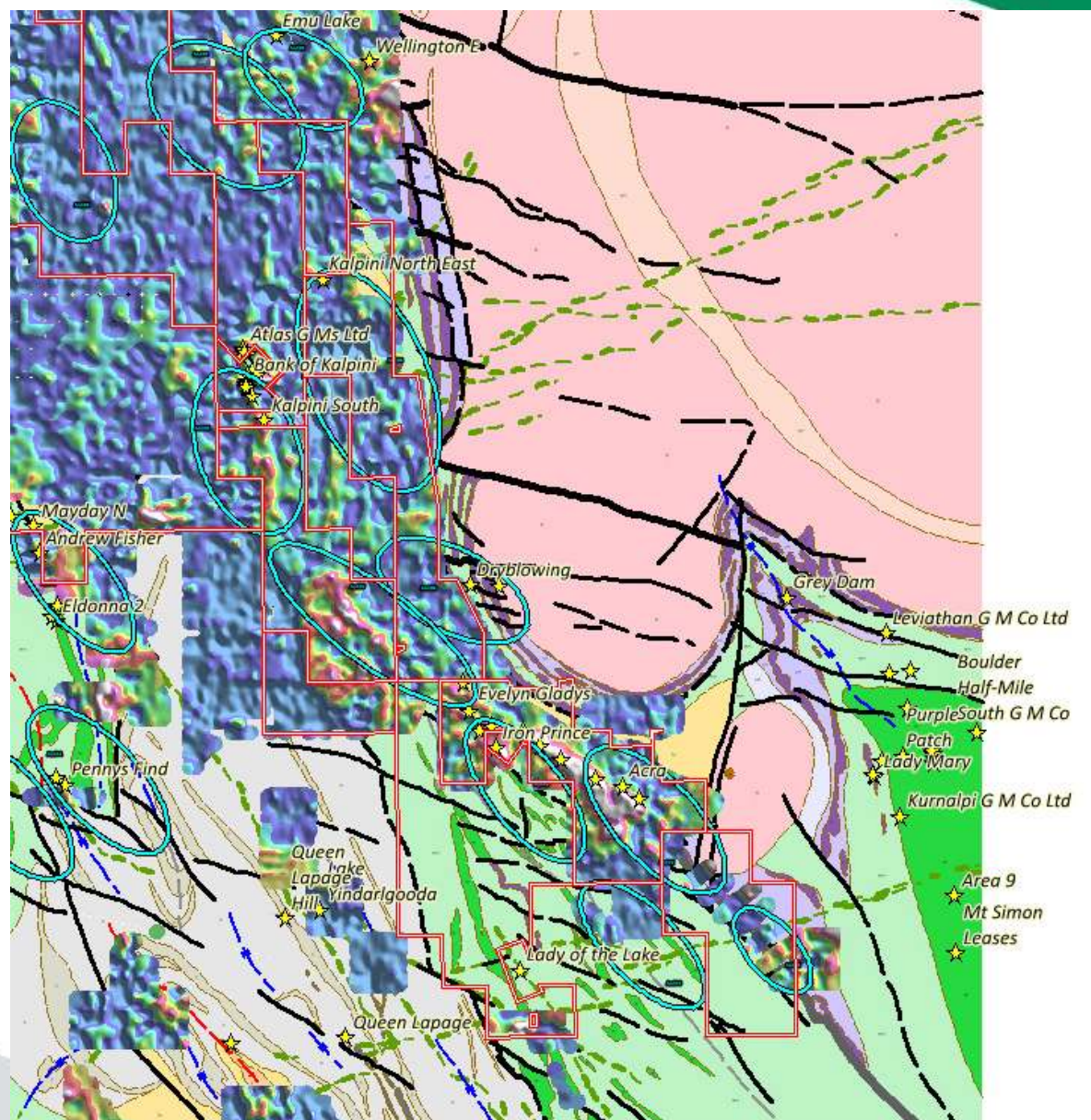
continues to excite

A number of the priority targets have modern 'nickel exploration' geochemistry completed. This is consistent with Pioneer's technique, so provides a major head-start for the 'proof of concept' phase.

Gold-focussed geochemistry infilling or extending 'nickel' generation sampling has commenced.

Aircore drilling will test resulting anomalies.

Refer note 3 when considering results



Proposed Q3-Q4 2015 Work Program

Fairwater

- RC/Diamond Drilling at FWNi003: September 2015
- Aircore FWNi003 ext targets: Quarter 4 2015

Blair

- Drill fertile sections of the Blair Ultramafic Dome. Quarter 3 2015
- Priority zone is within 1 km of the existing box cut, incrementing at 1km stages.

Acra

- Implement exploration strategy using the completed targeting.
- Next step, soil geochemistry and aircore programs. Quarter 3 and 4 2015



Investment Highlights

- FOCUSED
 - Projects within the world class Eastern Gold (and Nickel) fields
- FUNDED
 - \$2.61 million cash March 2015 Quarterly
- ACTIVE (but very mindful of our cash)
 - Emerging Nickel targets at FAIRWATER (Fraser Range) with high reward potential in WA's hottest location
 - Test the Blair Dome, host to the BLAIR NICKEL MINE, near Kambalda/Kalgoorlie WA
 - Proof of concept work, testing targets at ACRA (gold)

