



DOOLGUNNA DRILLING UPDATE

Thundelarra is pleased to announce the completion of the current phase of exploration drilling programmes at its 90%-owned Red Bore prospect (M52/597) and Curara Well prospect (E42/4204) in Western Australia's Doolgunna region. Samples are now at the laboratory for assay.

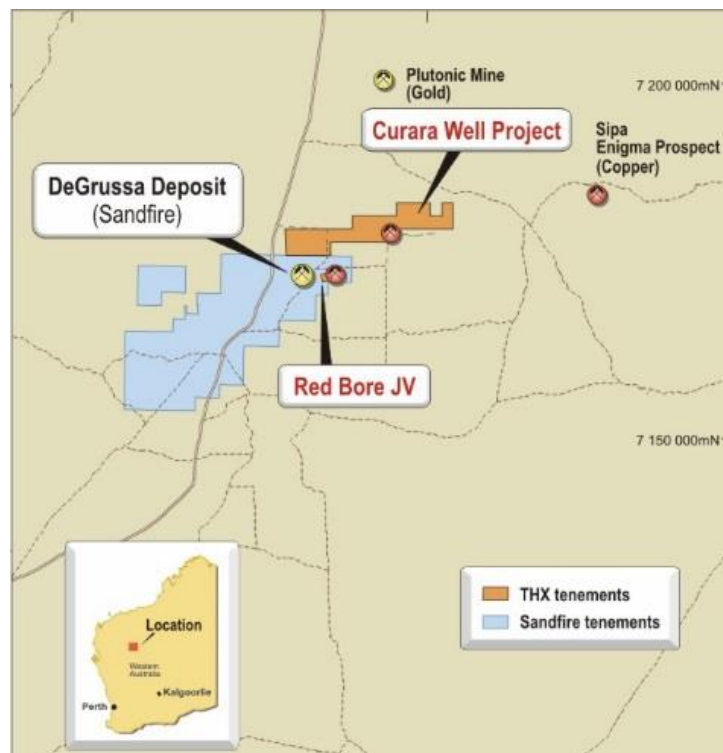


Figure 1. Location map of Red Bore and Curara Well Projects showing proximity to DeGrussa copper-gold mine (Sandfire Resources NL). Scale: grid spacing is 30 km.

The Red Bore programme drilled nineteen RC holes for a total advance of 2,650m (refer Figure 2). Selected holes have been cased in preparation for downhole geophysical surveys which are currently being planned. The programme had four main objectives:

- To pursue down-plunge extensions of the mineralisation at Gossan;
- To improve the understanding, and to test for extensions, of the Impaler mineralisation;
- To test other magnetic targets that might represent further “pipes”; and
- To explore several other mineralisation targets in possible structurally-controlled settings.

A number of holes encountered broken ground, mainly in the vicinity of targeted structural features such as fault zones, resulting in the holes being terminated before reaching their target depths. Some were re-drilled and some warrant deeper follow-up diamond drilling to allow the targets to be properly tested.

Deeper diamond drilling is currently being planned, with final decisions on the number and location of the holes to be made when all assays have been received and all relevant data, including from planned down-hole geophysical surveys, has been compiled and collated with the drill logs.

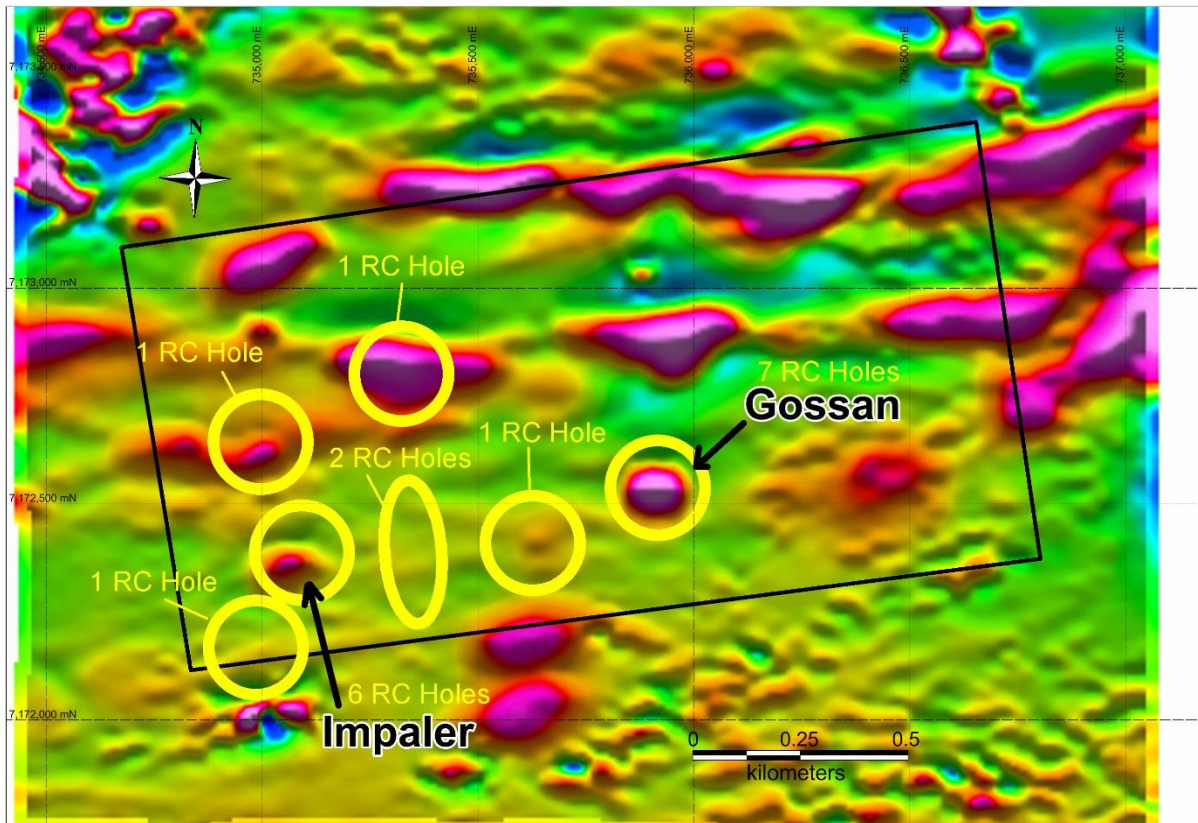


Figure 2: Red Bore: general distribution of drill holes between targets. Grid spacing is 500m.

At Curara Well, eight air core drill traverses, oriented approximately north-south, were drilled to blade refusal or to the depth of the available drill rods. A total of 2,340m was drilled in 48 holes, ranging from 3m to 81m in depth and averaging just under 50m per hole.

Most of the traverses were designed to test the interpreted position of the Jenkin Fault Zone (“JFZ”) and so refine our knowledge of its location. Other traverses were designed to test interpreted transverse faults, considered an important influence on local mineralisation models.

The development of a more accurate understanding of the local structural controls and their location allows better interpretation of the local geology and thus mineralisation targets.

In summary, the air core programme had four main objectives:

- To locate the JFZ more accurately under surface cover;
- To locate and test the possible off-sets / transfer faults along the JFZ;
- To identify geochemical anomalies in the proximity of the JFZ; and
- To determine the depth of the weathering profile in the proximity of the JFZ.

Five Reverse Circulation holes were drilled, for a total advance of 928m, to follow up targets identified by the air core traverses (refer Figure 3). These holes have been cased in preparation for down-hole geophysical surveys, which will be carried out as part of the Red Bore survey programme currently being prepared.

Full details of all drillhole collar locations will be reported when all assay results have been received and the results collated and interpreted.

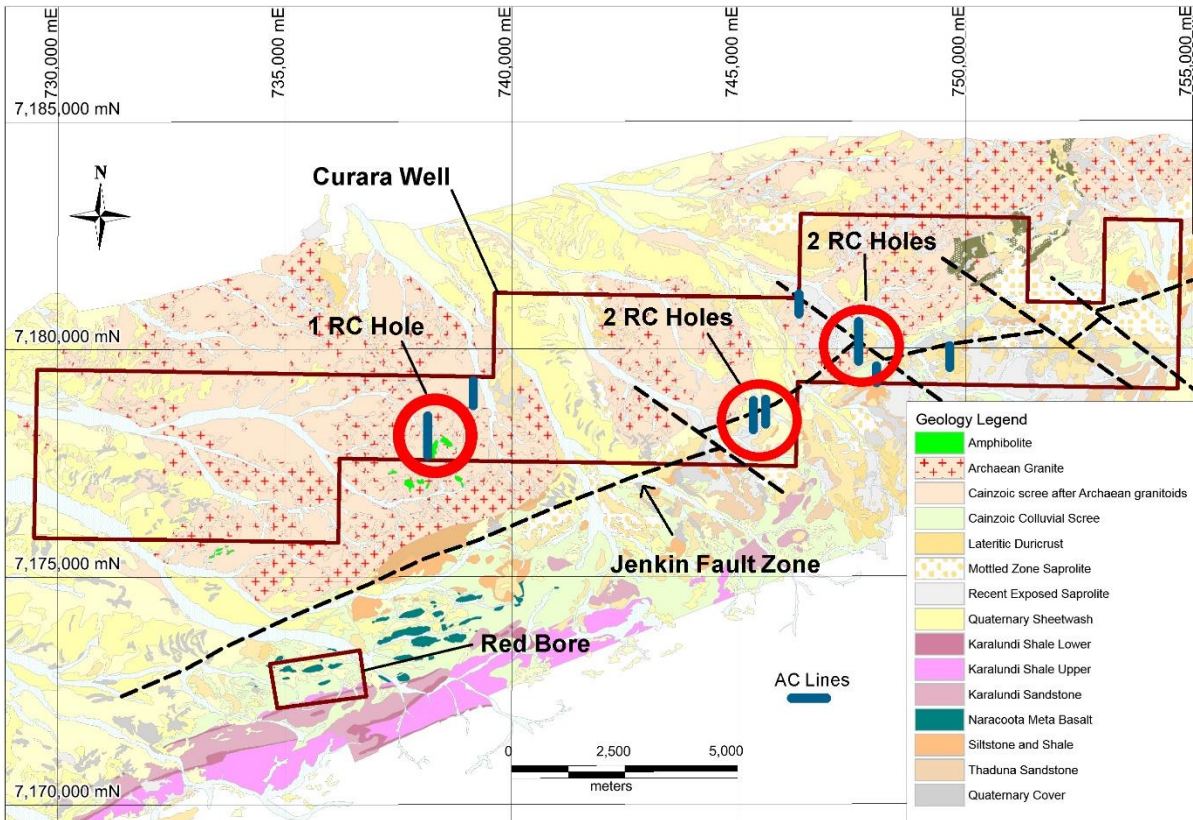


Figure 3: Curara Well tenement showing the inferred surface trace of the Jenkin fault zone, the location of Air Core drilling traverses, and the general location of follow-up Reverse Circulation drill holes. Grid spacing is 500m.

Initial geological evaluation of the drilling programmes just completed at Red Bore and at Curara Well have provided further evidence supporting the macro scale geological models currently advanced by our geological team.

This, in conjunction with the recent positive results from the nearby Monty project being explored by the Sandfire / Talisman joint venture, continue to underpin the prospectivity of the Doolgunna area.

For Further Information Contact:
Mr Tony Lofthouse - Chief Executive Officer
+61 8 9389 6927

THUNDELARRA LIMITED
Issued Shares: 319.4M
ASX Code: THX

Competent Person Statement

The details contained in this report that pertain to Exploration Results, Mineral Resources or Ore Reserves, are based upon, and fairly represent, information and supporting documentation compiled by Mr Costica Vieru, a Member of the Australian Institute of Geoscientists and a full-time employee of the Company. Mr Vieru has sufficient experience which is relevant to the style(s) of mineralisation and type(s) of deposit under consideration and to the activity which he is undertaking to qualify as a Competent Person as defined in the 2012 edition of the "Australasian Code for Reporting of Exploration Results, Mineral Resources and Ore Reserves" (JORC Code). Mr Vieru consents to the inclusion in this report of the matters based upon the information in the form and context in which it appears.