

ASX ANNOUNCEMENT

Rumble Acquires Thunderdome Project Fraser Range

21st July 2015

Thunderdome Project – Rumble 100%

- Thunderdome Project acquired covering 140sq km's in the main Fraser Range Gravity high with a distinct dome feature
- Limited previous drilling of 2 Aircore holes completed to date include an intersection of 6m @ 0.11% Cu & 0.28% Zn
- High Quality aeromagnetic dataset acquired

Thunderstorm Project – Rumble 100%

- 3 Strategic exploration applications in close proximity to Buxton's prospective Zanthus Project Conductors

Rumble Resources Ltd ("Rumble" or "the Company") is pleased to announce that the Company has expanded its footprint in the highly sought after Fraser Range Province. The new 100% Rumble owned project and exploration licenses expand Rumble's Fraser Range Foot Print to 3590sq km's.

The Thunderdome Project was a strategic low cost acquisition which will enable the Company to utilise its cash for high impact exploration. Importantly Rumble Owns a 100% interest in 16 out of the 17 Fraser Range tenements.

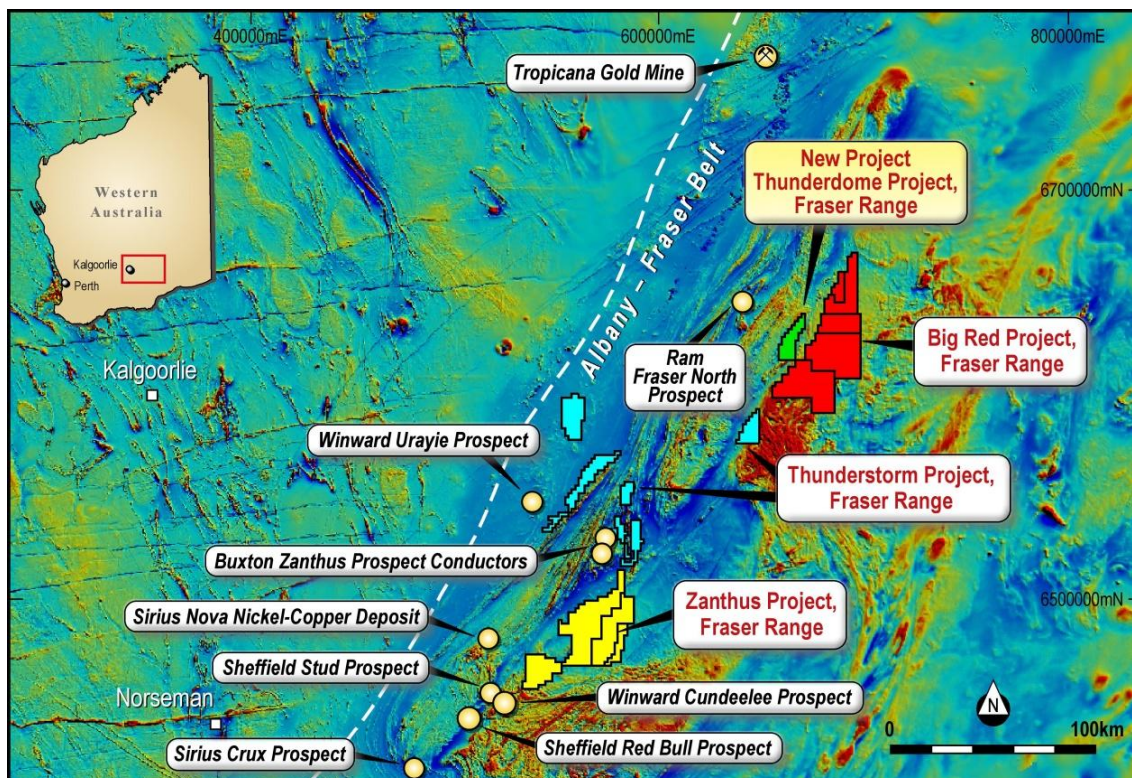


Figure 1: Rumble's Fraser Range Holding



Rumble Resources Ltd

Suite 9, 36 Ord Street,
West Perth, WA 6005

T +61 8 6555 3980

F +61 8 6555 3981

rumbleresources.com.au

ASX RTR

**Executives &
Management**

Mr Shane Sikora
CEO

Mr Terry Topping
Executive Director

Mr Andrew McBain
Non-executive Director

Mr Matthew Banks
Non-executive Director

Mr Michael Smith
Non-executive Director

Mr Bruno Seneque
Company Secretary



Thunderdome Project – 100% Rumble

The Thunderdome Project (E28/2366) covers 140sq km's in the main Fraser Range Gravity ridge associated with dense mafic/ultramafic rocks of the Fraser Range.

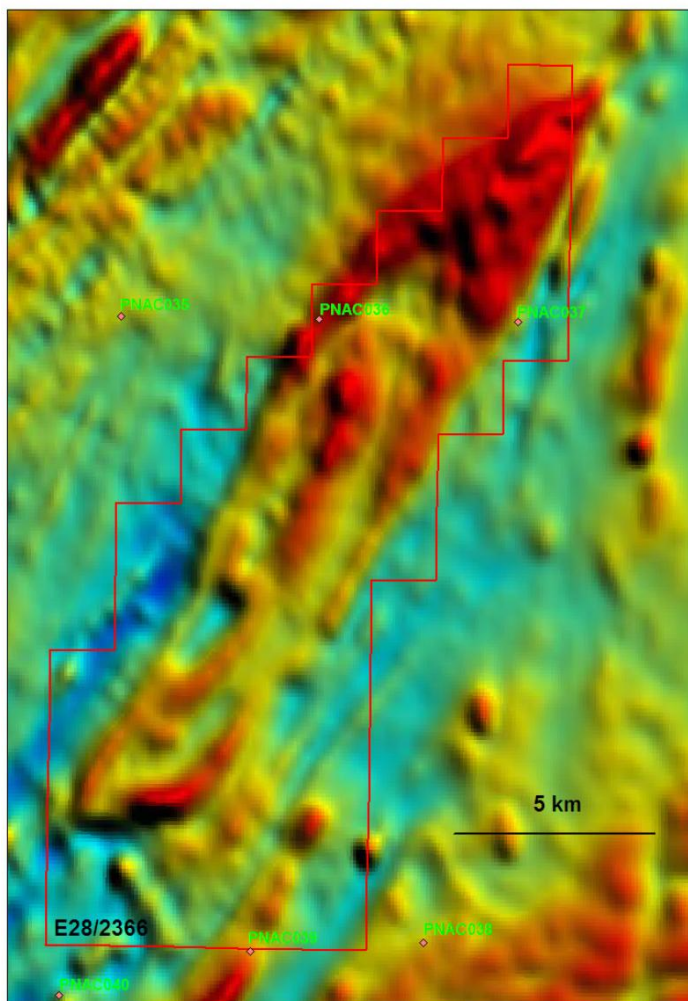


Figure 2: Thunderdome Project – Magnetics with drill hole locations.

The project is adjacent to the Rockford project recently acquired by Legend Mining (ASX:LEG) off the Creasy Group as announced on 2 July 2015. It has a large prominent dome feature clearly visible on regional airborne magnetic images. This large dome feature is one of the largest in the Fraser Range and has a fold axis of some 22km. Within this larger target area are also several smaller features which may represent later stage intrusions.

Previous exploration for nickel and copper has recently been carried out by Ponton Minerals which is part of the Creasy Group. This regional exploration was of reconnaissance air core drilling on a 5km by 15km spacing with two holes within the current project area of E28/2366. One of the historic aircore drill holes (PNAC036) was highly anomalous in copper and zinc. Drill hole PNAC036 returned an intersection of 6m @ 0.11% Cu & 0.28% Zn from 51m (EOH 109.5m). This intersection was within a carbonaceous unit which is part of the cover sequence.

Work completed to date included:

- a recent 100m spaced airborne magnetic survey
- reprocessing of regional gravity data
- petrology on EOH rock chips from PNAC036

Key Term of the project sale:

- Rumble acquired 100% for \$60k cash payment

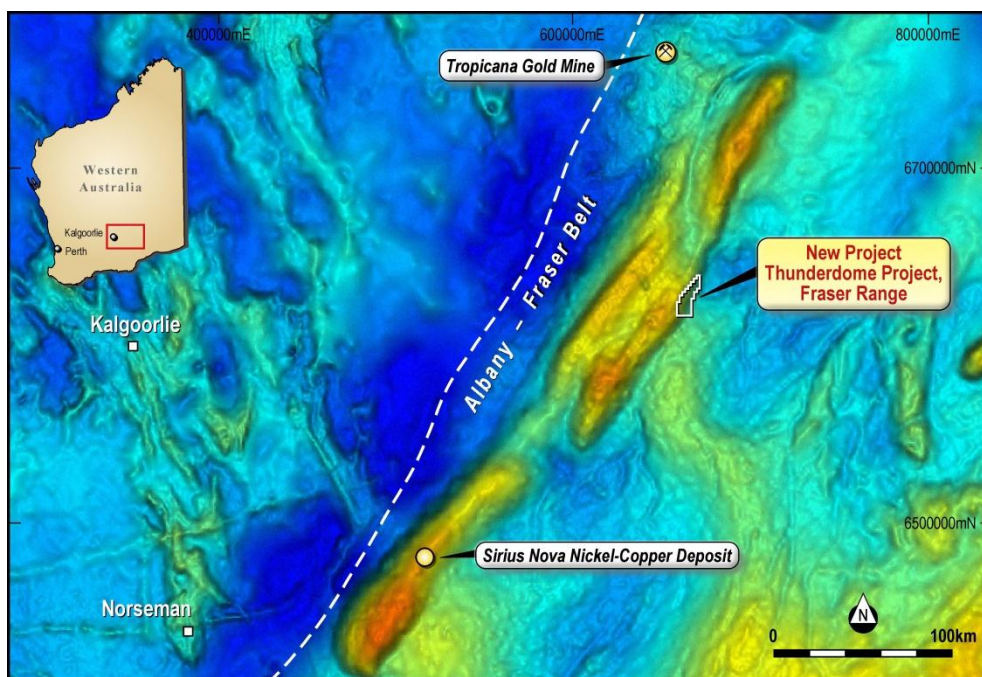


Figure 3: Thunderdome Project – located in main Fraser Range Gravity ridge

Thunderstorm Project – 100% Rumble

Applications E28/2527, E28/2528 and E28/2529 covers 160sq km's in the Fraser Range. There are portions of these tenements that are subject to competing tenement applications and Rumble have lodged 'objections to grant' which is scheduled for Kalgoorlie Wardens Court. These applications about the Buxton Resources Ltd prospective Zanthus project that are currently RC drill testing 2 high priority conductors on the project. Previous drilling by Buxton identified three separate zones of finely disseminated, magmatic nickel-copper sulphides at their Zanthus project. The presence of magmatic nickel sulphides within mafic to ultramafic intrusive rocks (similar to the host rocks at Nova- Bollinger) indicates that the project is highly fertile and prospective for the discovery of nickel-copper sulphide mineralisation.

Application E28/2523 covers 206 sq km's in the Northern Foreland of the Albany - Fraser Range. This has been interpreted to host similar intrusive features to that being explored by Windward Resources Uraryie and Uraryie South Prospects. Drilling in December 2014 of the Uraryie prospect returned anomalous nickel assays up to 0.55% Ni. Initial drilling of the Uraryie South Intrusive complex is planned for Q2 of FY16 following completion of a heritage survey.

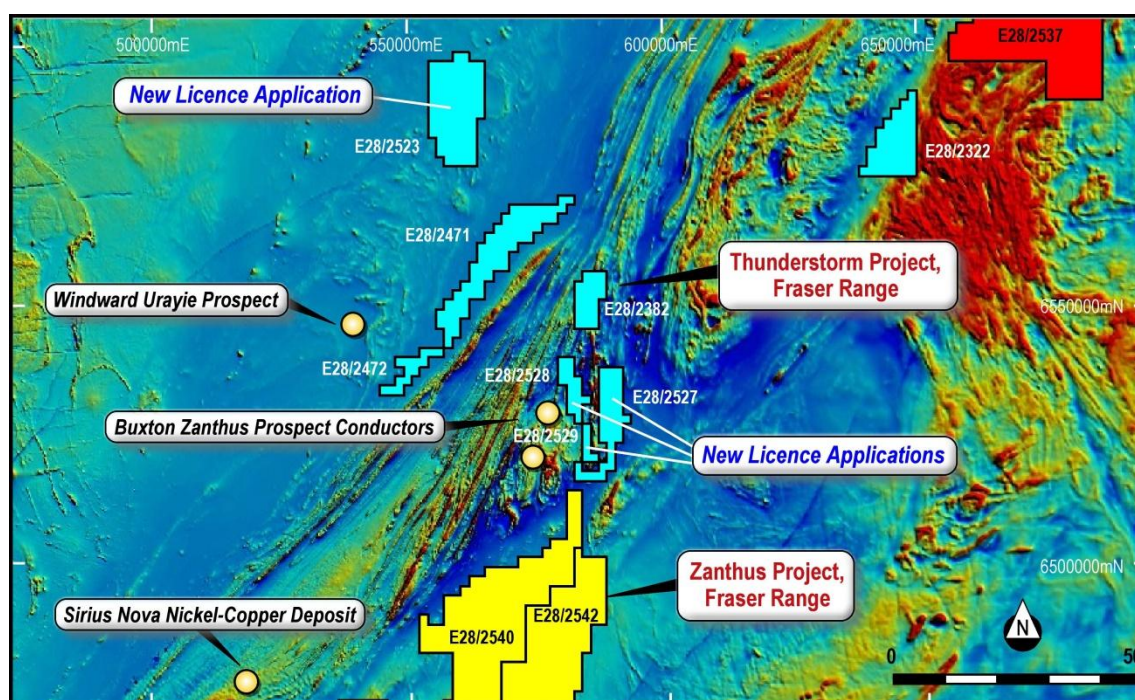


Figure 4: Thunderstorm Project tenement locations

Rumble will continue to evaluate Fraser Range Projects to provide its shareholders with multiple opportunities to make the next significant Nickel Discovery in the Fraser Range.

Fraser Range Future Exploration Activities

Rumblers technical team will continue to review the outcome of the Company's recent drilling program at the Zanthus Project. Rumble will assess the results of the DHEM, ground EM Programs, assays and petrology as it comes to hand to help determine with the next phase of exploration.

Rumble is fully funded to advance preparations for the next stage of exploration at its other Fraser Range projects including Big Red and the Thunderdome Project. At the recently acquired Thunderdome part of the preparations will include analysing the high quality aeromagnetic data, gravity and geochemical data sets. Once this has been completed a comprehensive exploration program will be put together which will include targeted geophysics and follow up drill programs.

The Company will provide an update on upcoming exploration activities within its Fraser Range portfolio in the near future.



For further information, please visit: www.rumbleresources.com.au

- ENDS -

For further information, please contact:

Shane Sikora
Chief Executive Officer
Rumble Resources
T: +61 8 6555 3983

About Rumble Resources Ltd

Rumble Resources Ltd is an Australian based exploration company, officially admitted to the ASX on the 1st July 2011. Rumble was established with the aim of adding significant value to its current gold and base metal assets and will continue to look at mineral acquisition opportunities both in Australia and abroad.

Competent Persons Statement

The information in this report that relates to Exploration Results is based on information compiled by Mr Terry Topping, who is a Member of the Australasian Institute of Mining & Metallurgy and the Australian Institute of Geoscientists. Mr Topping is a fulltime employee of Rumble Resources Limited and has sufficient experience relevant to the style of mineralisation and type of deposit under consideration and to the activity which he is undertaking to qualify as a Competent Person as defined in the 2012 Edition of the "Australasian Code for Reporting of Exploration Results, Mineral Resources and Ore Reserves". Mr Topping consents to the inclusion in the report of the matters based on his information in the form and context in which it appears.