

Newminster Update

Barra Resources Limited

22 July 2015

Phillips Find Project Newminster Open-pit

As you may be well aware the Company recommenced open-pit mining at its Newminster Deposit in mid-May pursuant to its 'Right-to-Mine' Agreement with Blue Tiger Mining Pty Ltd (BTM).

Following a hiatus in mining activity due to a subdued gold price after Stage 1, BTM exercised its right to

This current phase of mining will see BTM produce an estimated 3,600 ounces of gold by extending the current pit from a depth of 42m to 65m below the surface.

At the end of June, mining was approximately 50% complete with an estimated 20,870 tonnes grading 2.36 grams per tonne mined.



Chairman - Gary Berrell (left) and Exploration Manager - Gary Harvey (right) inspecting mining operations at Newminster

recommence mining at Newminster with a Stage 2 cut-back of the existing pit. Stage 1 was previously mined in early 2013 and produced 4,700 ounces of gold.

Treatment of ore has commence via toll milling at the Greenfields Milling Facility in Coolgardie.

Mining activities are expected to be completed by the end of August.

What's next?

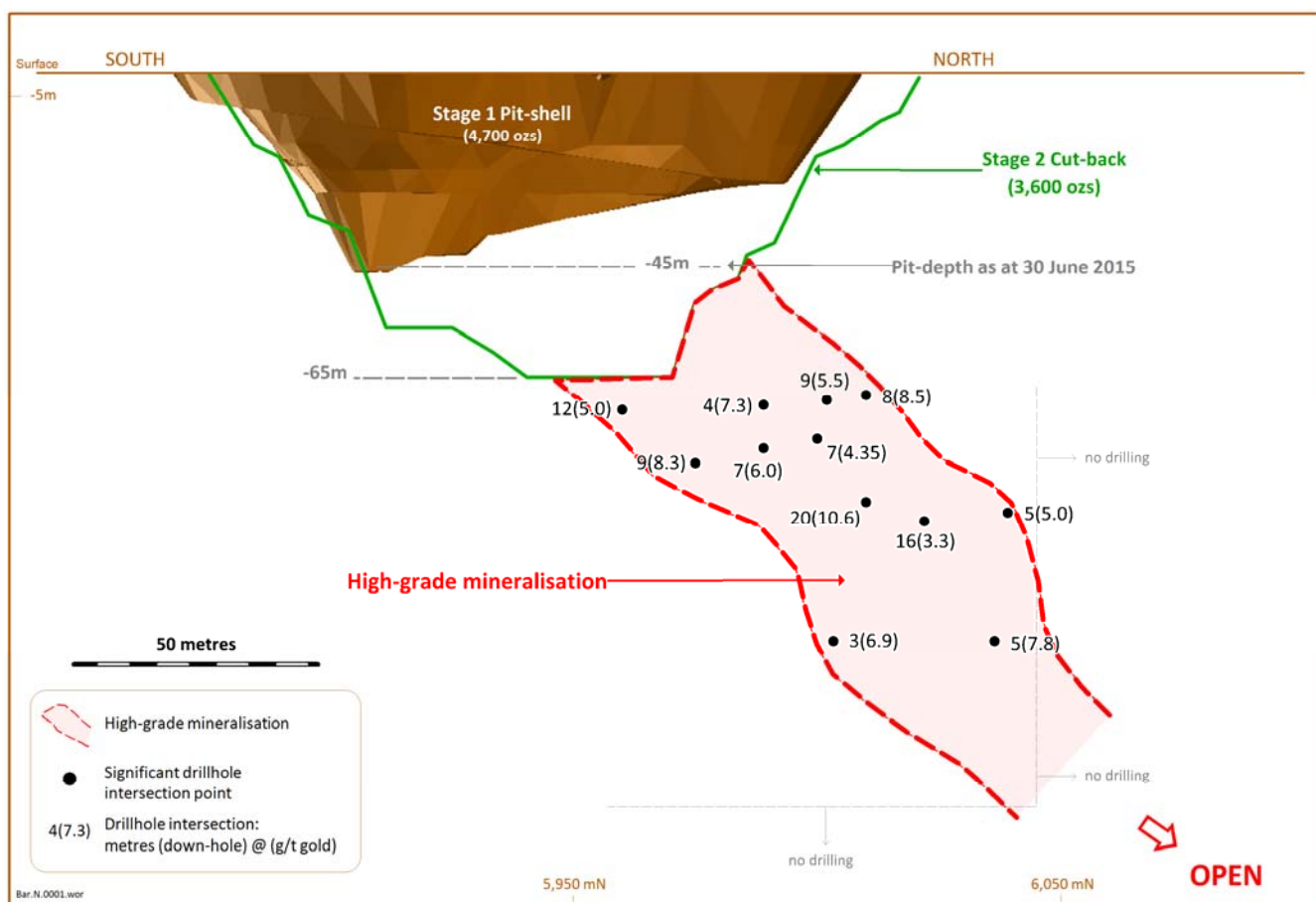
...

Following the completion of mining at Newminster the Company is squarely focused on implementing drilling programs to infill and extend known high-grade mineralisation at depth immediately below Newminster and nearby Bacchus Gift and Newhaven pits.

The Company's aim is to develop the Phillips Find Mining Centre into a viable medium to long-term underground mining operation.



Open-pit mining at Newminster



Schematic long-section of the Newminster Deposit showing high-grade mineralisation

The current phase of mining at Newminster will see additional 43,398 tonnes grading 2.83g/t gold for an estimated 3,630 ounces mined from the following Indicated and Inferred Mineral Resource (Table 1), reported in accordance with the guidelines of the JORC 2004 Code, over a 3 to 4 month period:

Newminster In-situ Mineral Resource - 1.5g/t lower cut (as at January 2013)			
JORC Category	Tonnes	Grade	Ounces
Indicated	33,462	3.38	3,640
Inferred	115,766	3.51	13,045
Total	149,228	3.48	16,686

Table 1: 2013 Newminster Mineral Resource (JORC2004) ¹

¹ Refer to ASX Release dated 16 January 2013 titled 'Gold Production to Commence at Phillips Find'; available to view at www.barraresources.com.au. The Company is not aware of any new information or data that materially affects the information included in the previous announcement and that all of the previous assumptions and technical parameters underpinning the estimates in the previous announcement have not materially changed.

Competent Persons Statement

The information in this report which relates to Exploration Results is based on information compiled by Gary Harvey who is a Member of the Australian Institute of Geoscientists and a full-time employee of Barra Resources Ltd. Gary Harvey has sufficient experience which is relevant to the style of mineralisation and type of deposit under consideration and to the activity which he is undertaking to qualify as a Competent Person as defined in the 2012 Edition of the "Australasian Code for Reporting of Exploration Results, Mineral Resources and Ore Reserves". Gary Harvey consents to the inclusion in the report of the matters based on his information in the form and context in which it appears.

The information in this report which relates to the Newminster Indicated and Inferred Mineral Resources is based on information compiled by Andrew Moulds, a previous employee of Goldfields Mining Services, who is a Member of the Australian Institute of Geoscientists. Andrew Moulds has sufficient experience which is relevant to the style of mineralisation and type of deposit under consideration and to the activity which he is undertaking to qualify as a Competent Person as defined in the 2004 Edition of the "Australasian Code for Reporting of Exploration Results, Mineral Resources and Ore Reserves". Andrew Moulds consents to the inclusion in the report of the matters based on his information in the form and context in which it appears.

A West Australian Focused Gold Explorer and Producer

Gary Berrell
Chairman & CEO

Barra Resources Limited
Ground Floor, 6 Thelma Street
West Perth, WA 6005
Phone: (+61 8) 9481 3911
Fax: (+61 8) 9481 3283
Email: barraadmin@barraresources.com.au
Website: www.barraresources.com.au