

ASX:NXM



NEXUSMINERALS

**Investor Presentation
October 2015**

www.nexus-minerals.com



NEXUS MINERALS

DISCLAIMER & COMPETENT PERSONS STATEMENT

• This document contains forward looking statements. Forward looking statements are not based on historical facts, but are based on Nexus's current expectations of future results or events. These forward looking statements are subject to risks, uncertainties and assumptions which could cause actual results or events to differ materially from the expectations described in such forward looking statements. While Nexus believes that the expectations reflected in the forward looking statements in this document are reasonable, no assurance can be given that such expectations will prove to be correct. Matters as yet not known to Nexus or not currently considered material by Nexus, may cause actual results or events to be materially different from those expressed, implied or projected in any forward looking statements. Any forward looking statement contained in this document is qualified by this cautionary statement.

• The information contained in this presentation is for informational purposes only and does not constitute an offer to issue, or arrange to issue, securities or other financial products. The information contained in this presentation is not investment or financial product advice and is not intended to be used as the basis for making an investment decision. The presentation has been prepared without taking into account the investment objectives, financial situation or particular needs of any particular person.

• No representation or warranty, express or implied, is made as to the fairness, accuracy, completeness or correctness of the information, opinions and conclusions contained in this presentation. To the maximum extent permitted by law, none of Nexus Minerals Limited, its directors, employees or agents, nor any other person accepts any liability, including, without limitation, any liability arising out of fault of negligence, for any loss arising from the use of the information contained in this presentation. In particular, no representation or warranty, express or implied is given as to the accuracy, completeness or correctness, likelihood of achievement or reasonableness or any forecasts, prospects or returns contained in this presentation nor is any obligation assumed to update such information. Such forecasts, prospects or returns are by their nature subject to significant uncertainties and contingencies.

• Before making an investment decision, you should consider, with or without the assistance of a financial adviser, whether an investment is appropriate in light of your particular investment needs, objectives and financial circumstances. Past performance is no guarantee of future performance.

• The distribution of this document in jurisdictions outside Australia may be restricted by law. Any recipient of this document outside Australia must seek advice on and observe any such restrictions.

• In particular, this presentation does not constitute an offer to sell, or a solicitation of an offer to buy, securities in the United States or to any "U.S. person" (as defined in Regulation S under the U.S. Securities Act of 1933, as amended ("Securities Act")). The securities referred to in this presentation have not been and will not be registered under the Securities Act or under the securities laws of any state in the United States. Securities may not be offered or sold in the United States or to, or for the account or benefit of, any U.S. person, unless the securities have been registered under the Securities Act or an exemption from registration is available.

• The information in this report that relates to Exploration Results, Mineral Resources or Ore Reserves is based on information compiled or reviewed by Mr Andy Tudor, who is a Member of The Australasian Institute of Mining and Metallurgy and the Australian Institute of Geoscientists. Mr Tudor is a full time employee of Nexus Minerals Limited.

• Mr Tudor has sufficient experience which is relevant to the style of mineralisation and type of deposit under consideration and to the activity which he is undertaking to qualify as a Competent Person as defined in the 2012 Edition of the 'Australasian Code for Reporting of Exploration Results, Mineral Resources and Ore Reserves'.

• The exploration results are available to be viewed on the Company website www.nexus-minerals.com. The Company confirms it is not aware of any new information that materially affects the information included in the original announcement. The Company confirms that the form and context in which the Competent Person's findings are present have not been materially modified from the original announcements.

• Mr Tudor consents to the inclusion in the report of the matters based on his information in the form and context in which it appears.

www.nexus-minerals.com

COMPANY OVERVIEW

Nexus Minerals Limited	ASX: NXM
Shares	70.4 million
Share Price October 2015	AUD ~0.07
Treasury (30 September 2015)	\$6 million
Market Cap	~\$5 million
Shareholders	725
Top 20	53.30%

BOARD AND MANAGEMENT

Chairman	Mr Paul Boyatzis
Non - Executive Director	Dr Mark Elliott
Non - Executive Director	Mr Bruce Maluish
Non - Executive Director & Company Secretary	Mr Phillip MacLeod
CEO & Exploration Manager	Mr Andy Tudor

COMPANY OVERVIEW

- **COMMODITY GOLD**
- **STATUS EXPLORATION**
- **LOCATION KALGOORLIE / EASTERN GOLDFIELDS**
- **NEW JV WITH SARACEN GOLD MINES**
- **EXPERIENCED TEAM – EXPLORATION FOCUS**
- **AQUISITION OF SCALABLE PROJECTS**
- **CASH \$6million**

MANAGEMENT

ANDY TUDOR - CEO

- 30 YEARS EXPERIENCE IN THE MINING INDUSTRY
- MULTIPLE WA GOLD DISCOVERIES
 - ❑ King of the Hills & Bannockburn Gold Mines
- EXPLORATION MANAGER PNG RIO TINTO EXPLORATION
 - ❑ Wafi-Golpu Gold Copper Project
- EXPLORATION MANAGER ABERFOYLE INDONESIA
- GENERAL MANAGER MINING ASSOCIATES CONSULTANTS
- CEO / MD ASX LISTED MINING COMPANIES

**Nexus
Projects**

Project Maturity Profile

Mine

MINING OPERATION

**Resource
Evaluation**

**Resource
Definition**

MINERAL DEPOSIT

Prospects containing sufficient inferred width, grade and tonnage to warrant resource estimation and mining feasibility study

**Confirmation Drilling
Deposit Confirmation**

**Major Drilling
Target Testing**

**Detailed Surface Exploration
Target Testing**

**Reconnaissance Exploration
Target Identification
Project Confirmation**

MINERALISED TARGETS WITH SIGNIFICANT DRILL INTERSECTIONS
Numerous mineralised drill intersections showing a high degree of continuity

MINERALISED TARGETS

Prospects with numerous significant anomalous geochemical values or grade intersections and geological or geophysical indicators for size potential-discrete targets

ANOMALOUS PROSPECTS

Strong geochemical results or discrete geological or geophysical targets

REGIONAL PROJECT AREA

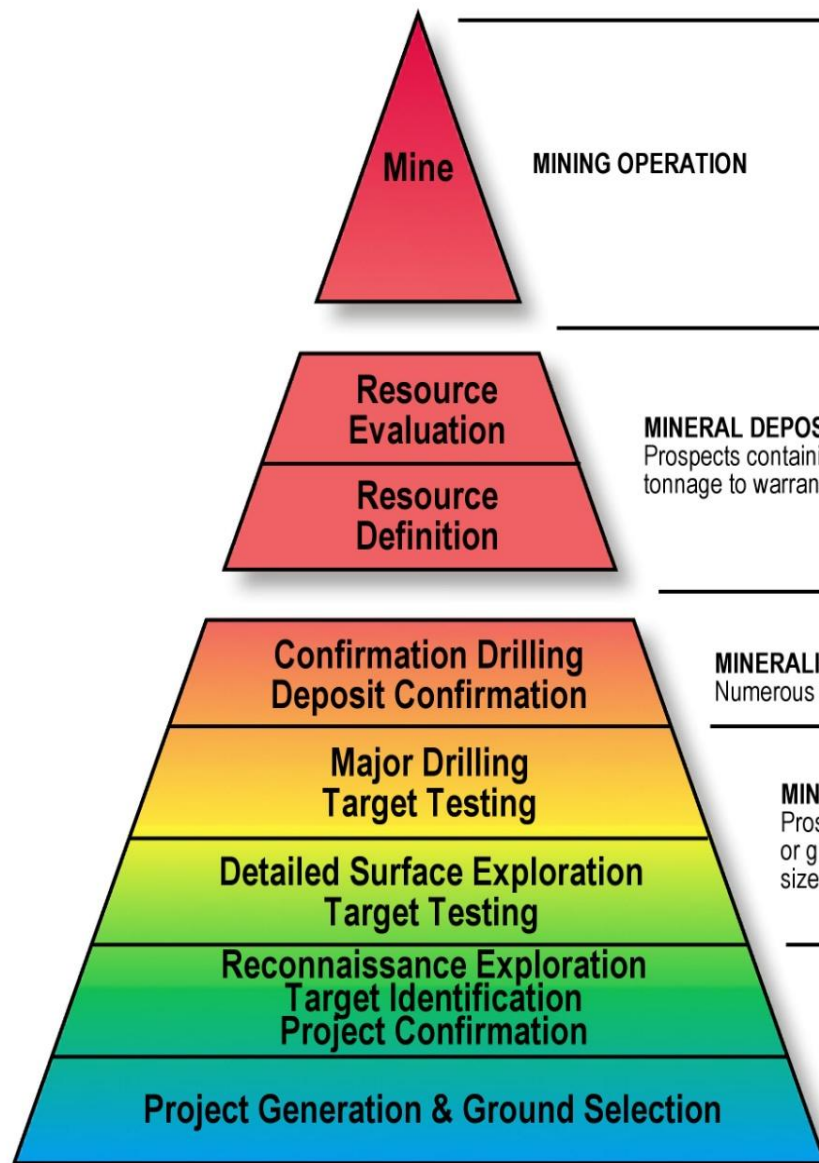
Favourable host rocks, structures and / or geophysical characteristics

Pinnacles JV

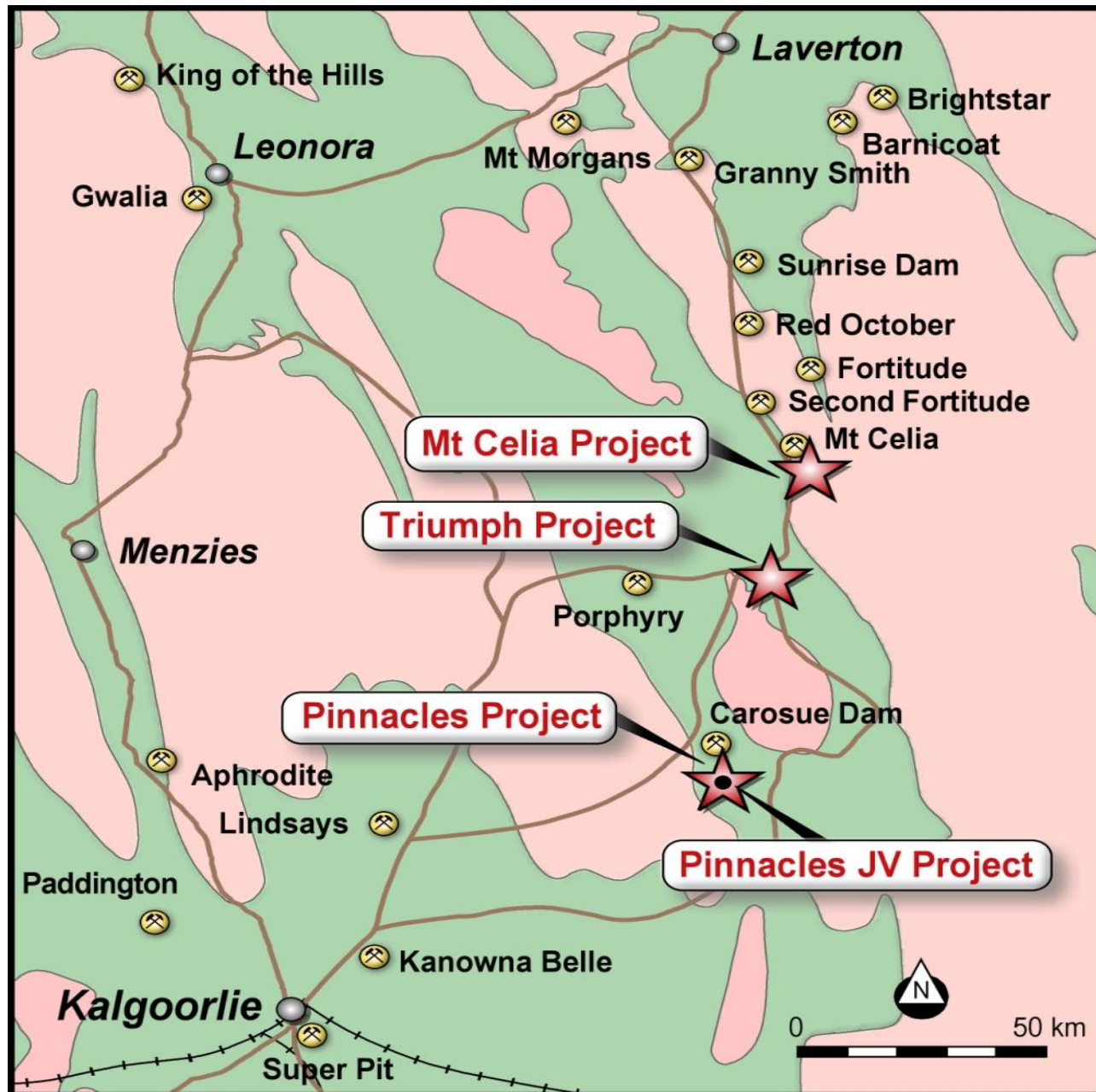
Triumph

Pinnacles

Mt Celia

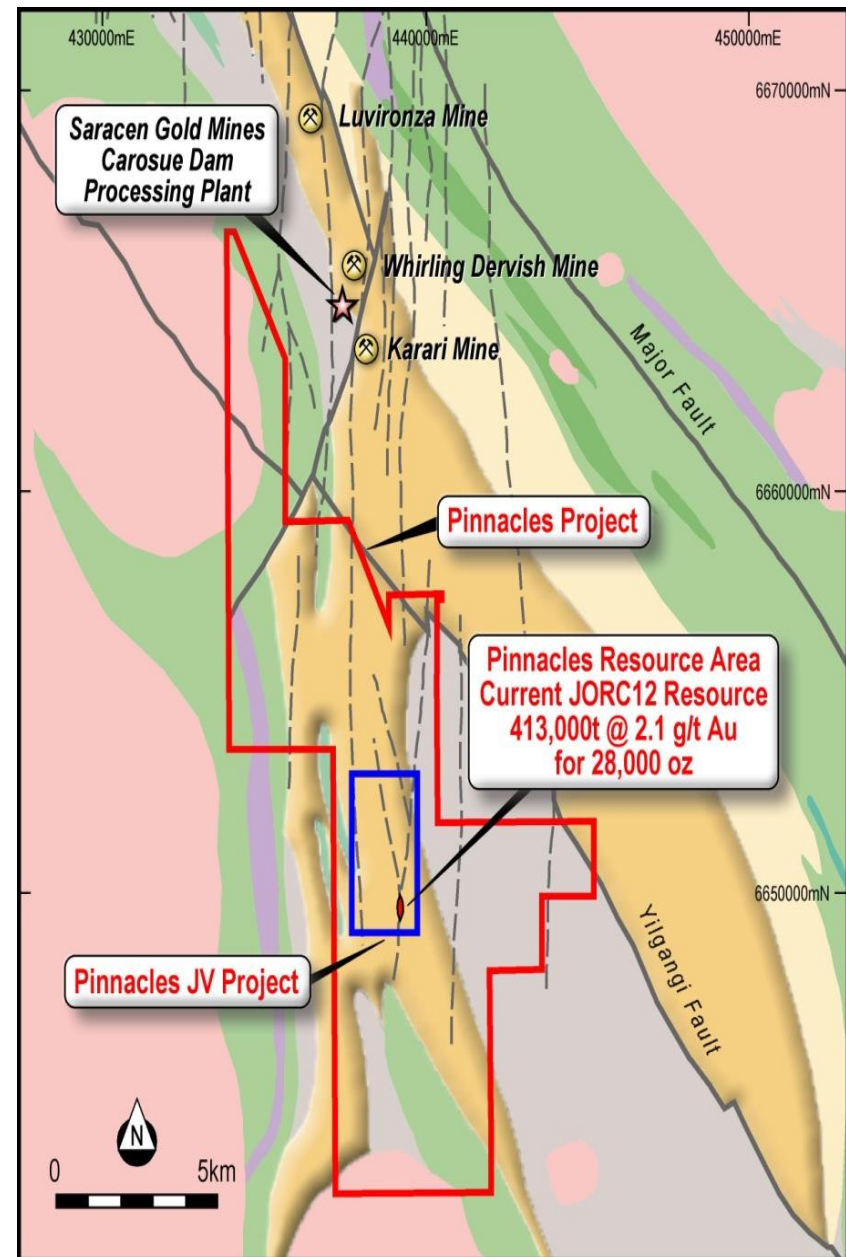


PROJECT LOCATIONS



PINNACLES JV & PINNACLES REGIONAL GOLD PROJECT

- Nexus JV with Saracen Gold Mines
- JV includes Ore Sale & Purchase clause
- 13km south of Saracen's Carosue Dam
Mining Operations + 2.4Mtpa Mill
- Access to Haul Roads & Infrastructure
- Nexus earning up to 85%
- Existing 28,000oz Resource
- JV surrounded by Nexus tenements



PINNACLES JV GOLD PROJECT

Pinnacles Nexus - Saracen Project

13km

Karari

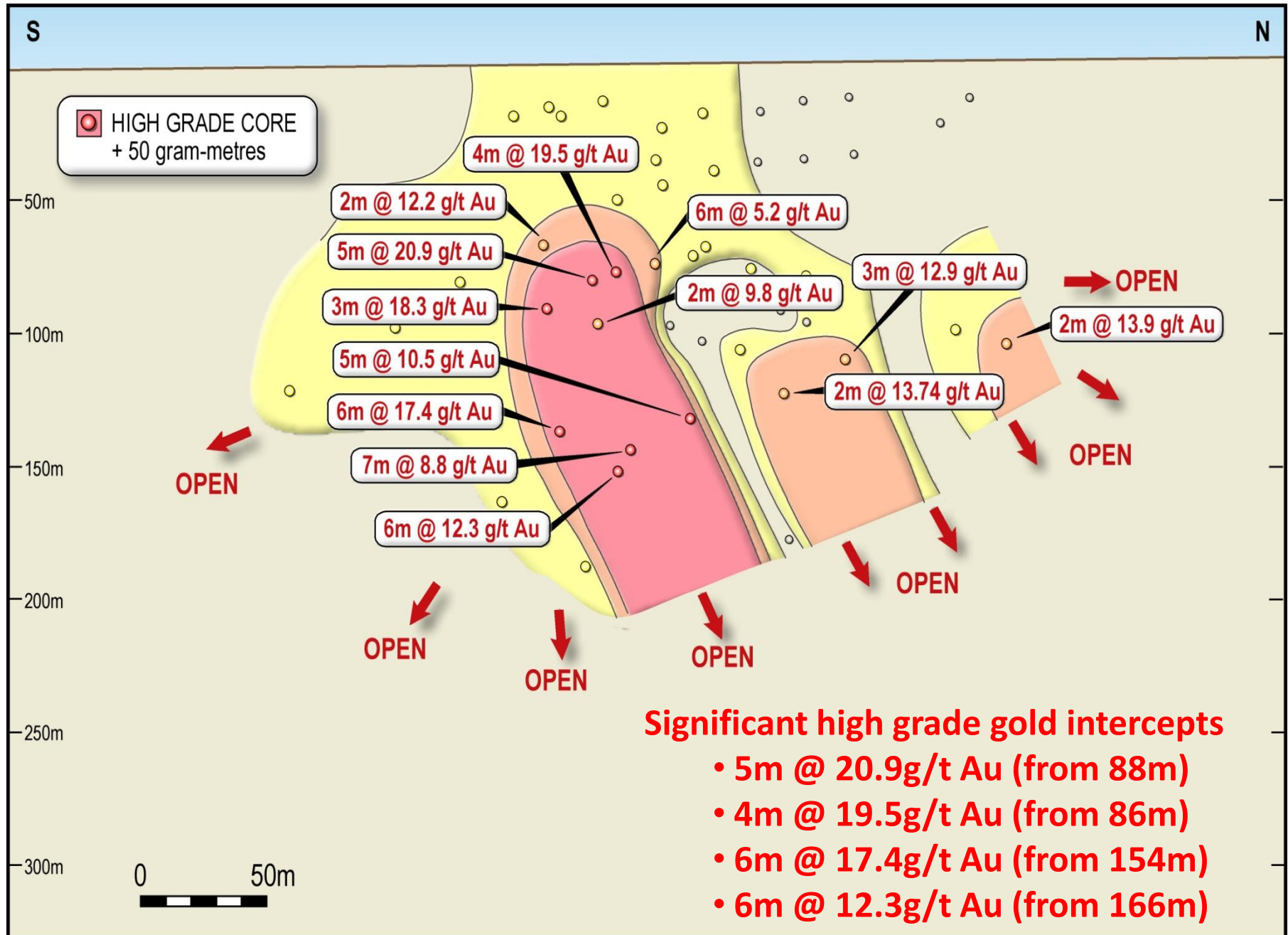
2.4 Mtpa CIL Plant

Whirling Dervish

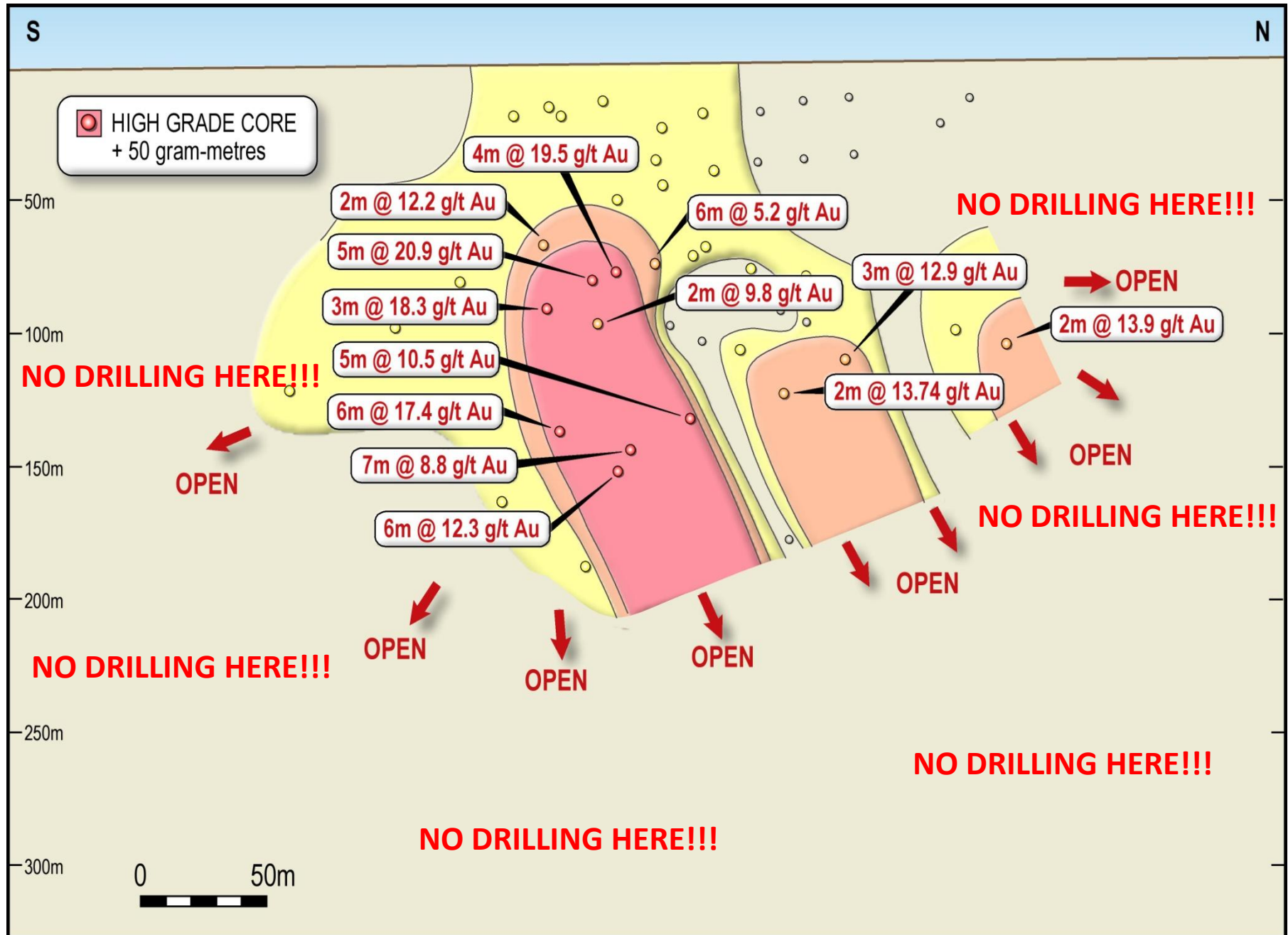
**Saracen Gold Mines
Carosue Dam Mining District**



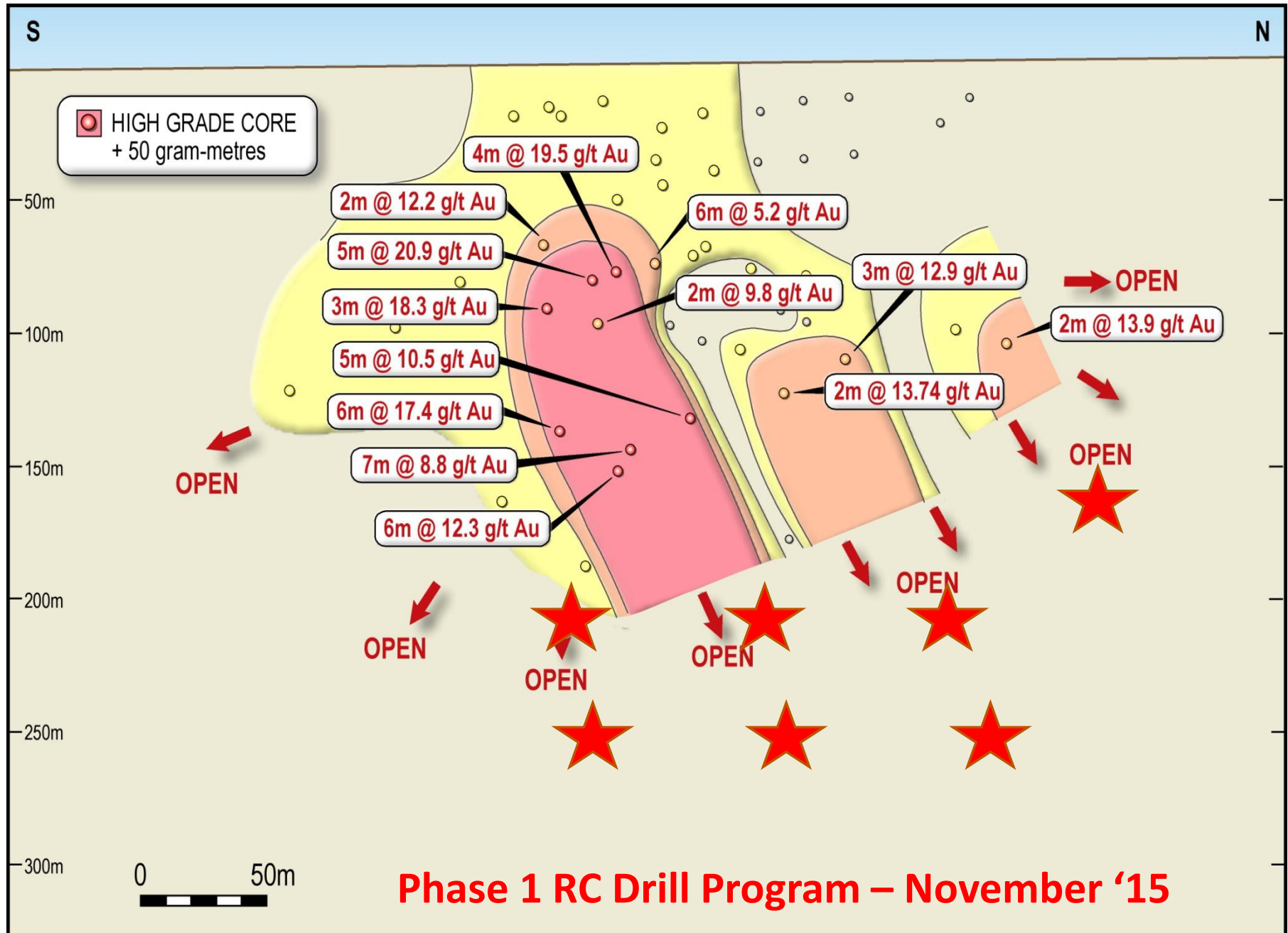
PINNACLES JV LONG SECTION



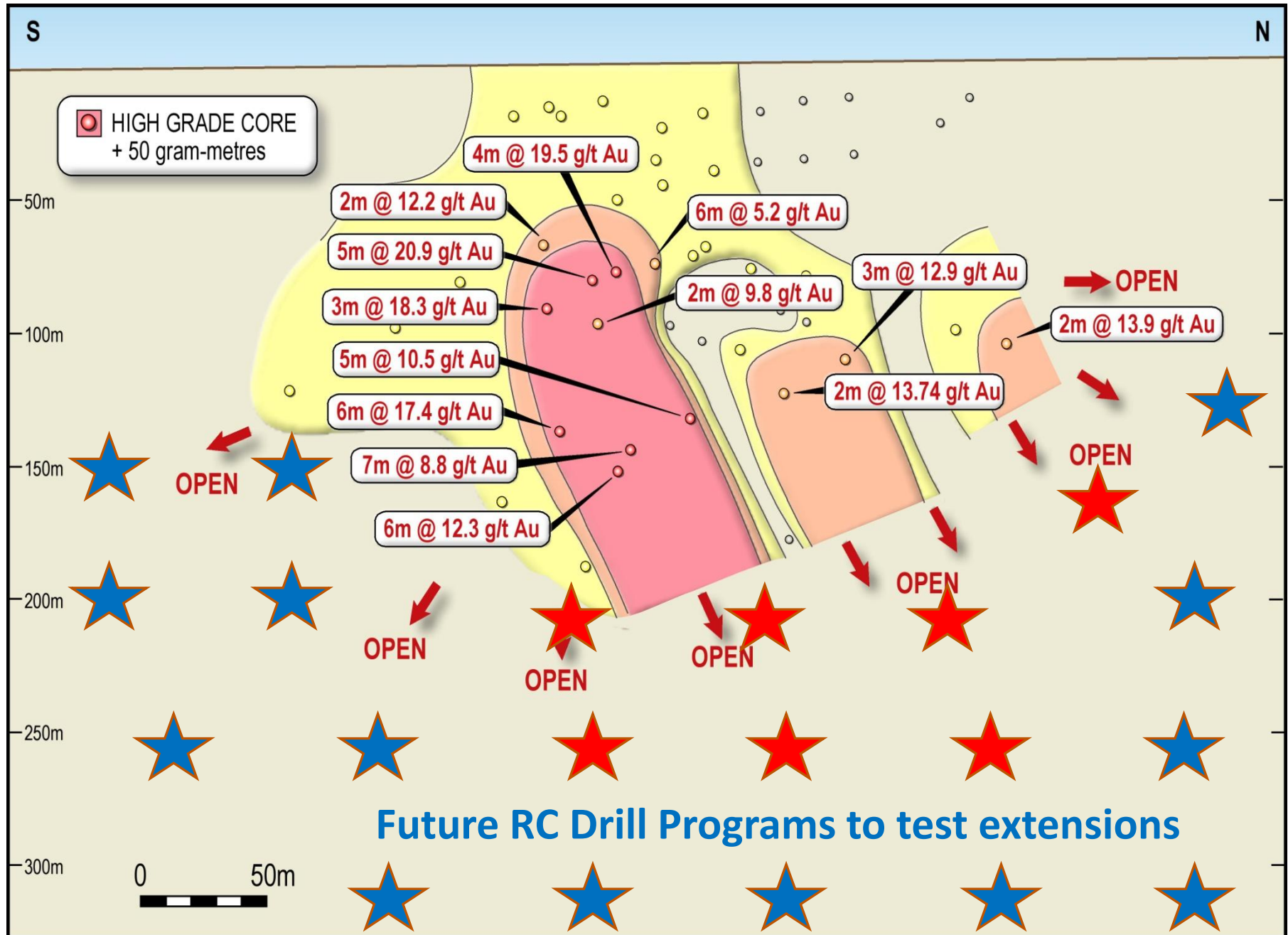
PINNACLES JV LONG SECTION



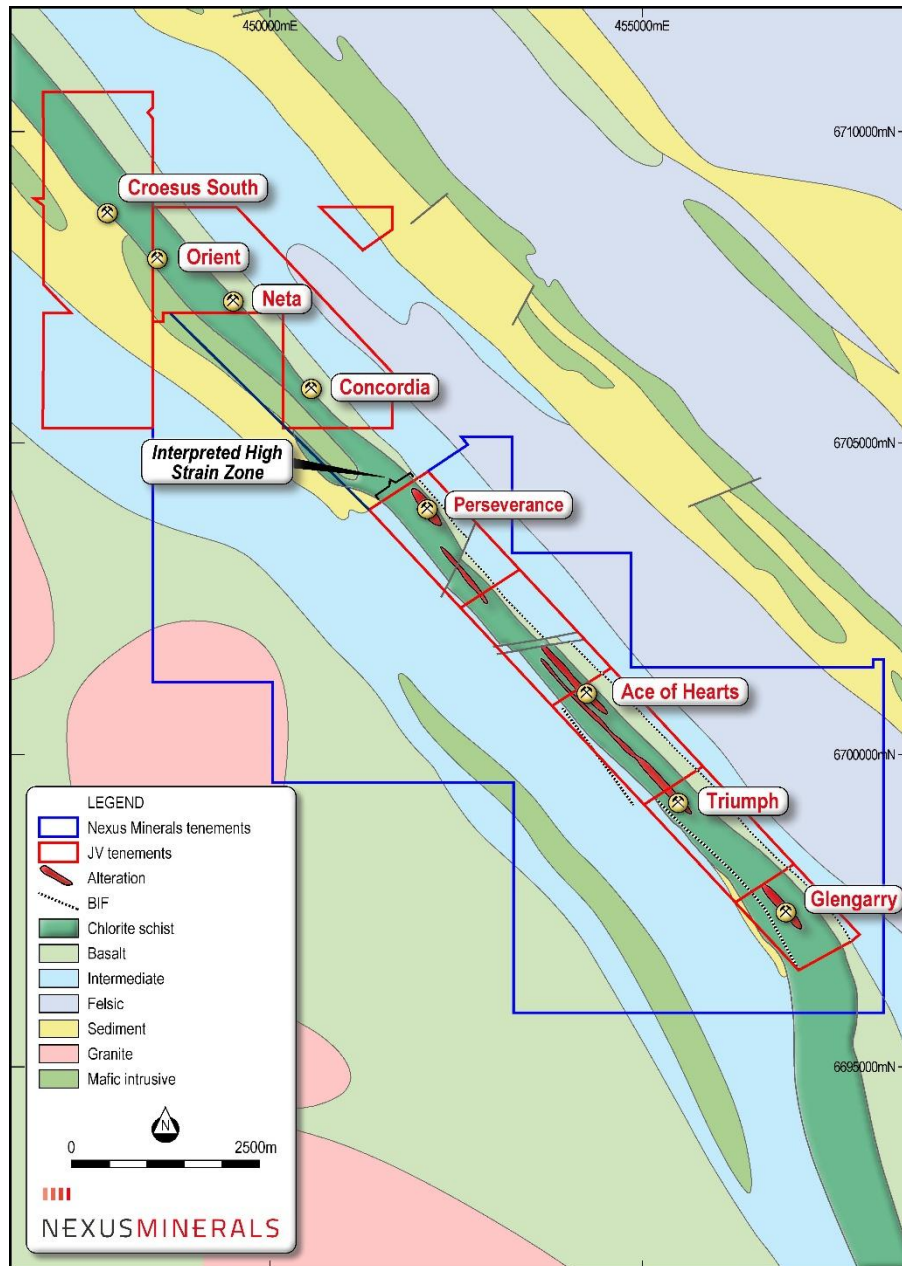
PINNACLES JV LONG SECTION



PINNACLES JV LONG SECTION

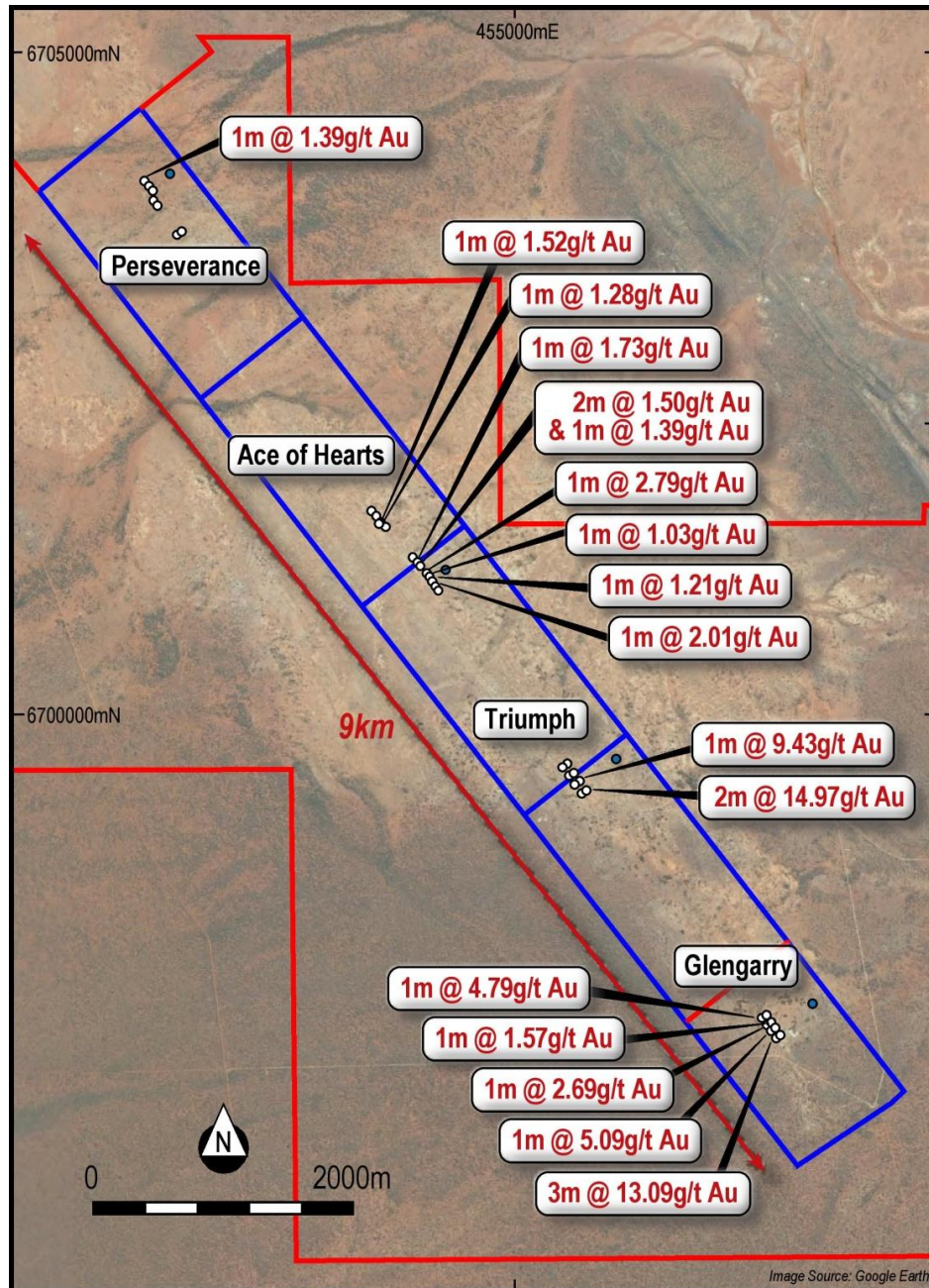


TRIUMPH GOLD PROJECT



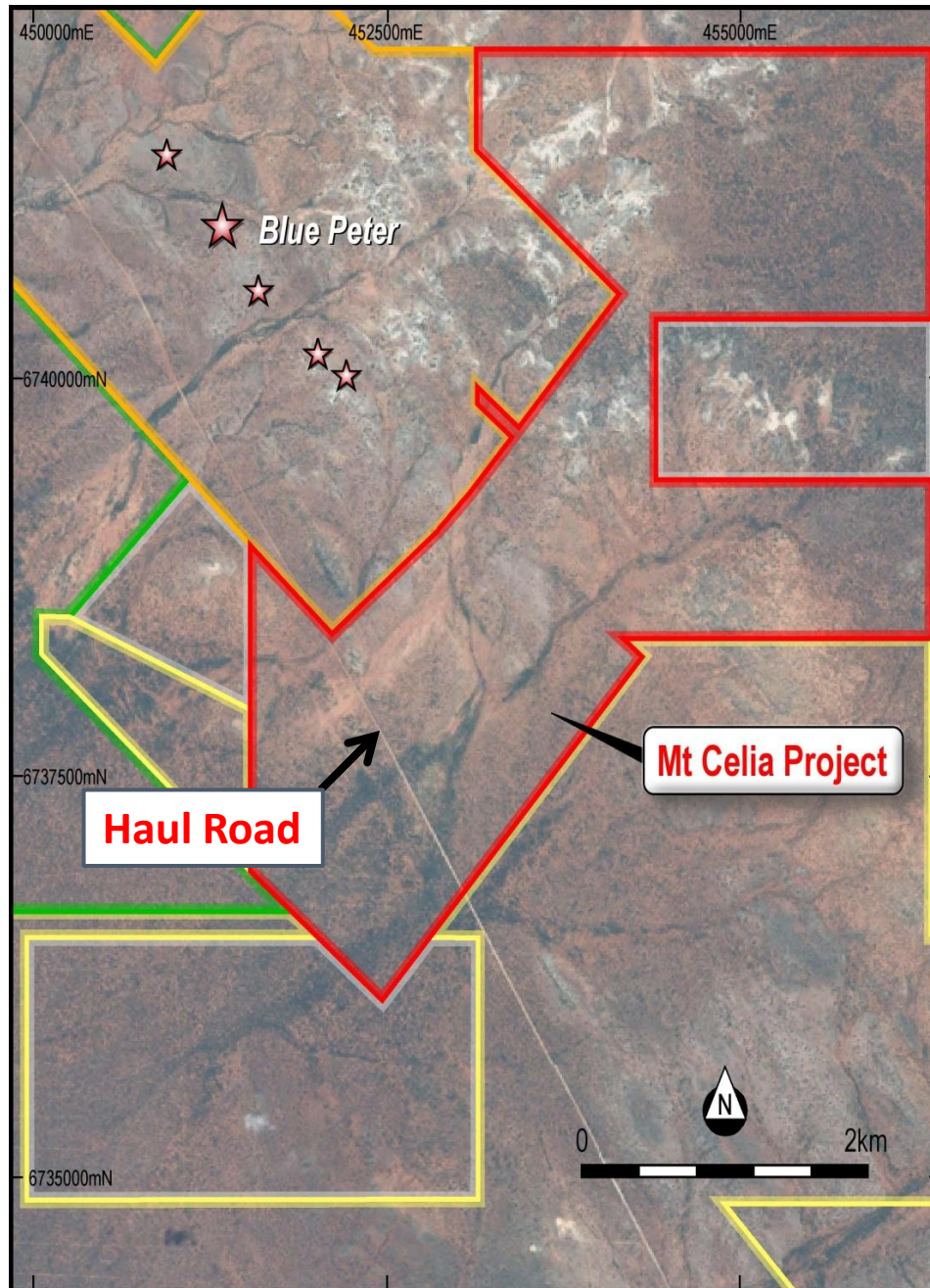
- 145km north-east of Kalgoorlie
- Same geological terrain as Granny Smith, Sunrise Dam, Red October & Carosue Dam
- High Grade historic mining centre
 - 22,000t@46.4g/t Au
 - 8,000t@24.5g/t Au
- 72km² tenement package
- Saracen haul road crosses tenement
- JV - Nexus to earn up to 100%

TRIUMPH GOLD PROJECT



- Geological fact mapping, IP ground geophysical program and initial RC Drill program completed early 2015
- Geology & IP assists understanding of structural controls on the mineralisation
- Initial 4034m RC drill program tested 4 priority target areas
- High grade mineralisation intersected at Triumph and Glengarry prospects

MT CELIA GOLD PROJECT



- 180km north east of Kalgoorlie.
- Tenement lies within the Laverton Tectonic Zone - host of numerous major gold mines
- Tenement contains numerous small historic gold workings
- Project is immediately south of Legacy Iron's Blue Peter high grade gold project. Current Resource - 30,554 oz gold
- Haul road runs through tenement

SUMMARY

Why Nexus Minerals?

- ✓ \$6million Cash on Hand
- ✓ Exciting new Joint Venture with Saracen Gold Mines
- ✓ Drilling Pinnacles JV November '15
- ✓ Professional & Experienced Management and Technical Team
- ✓ Ideally positioned to capitalise on emerging growth opportunities

Contacts:

Andy Tudor CEO

atudor@nexus-minerals.com

Nexus Minerals Limited (ASX: NXM)

ABN: 96 122 074 006

41-47 Colin Street

West Perth WA 6005

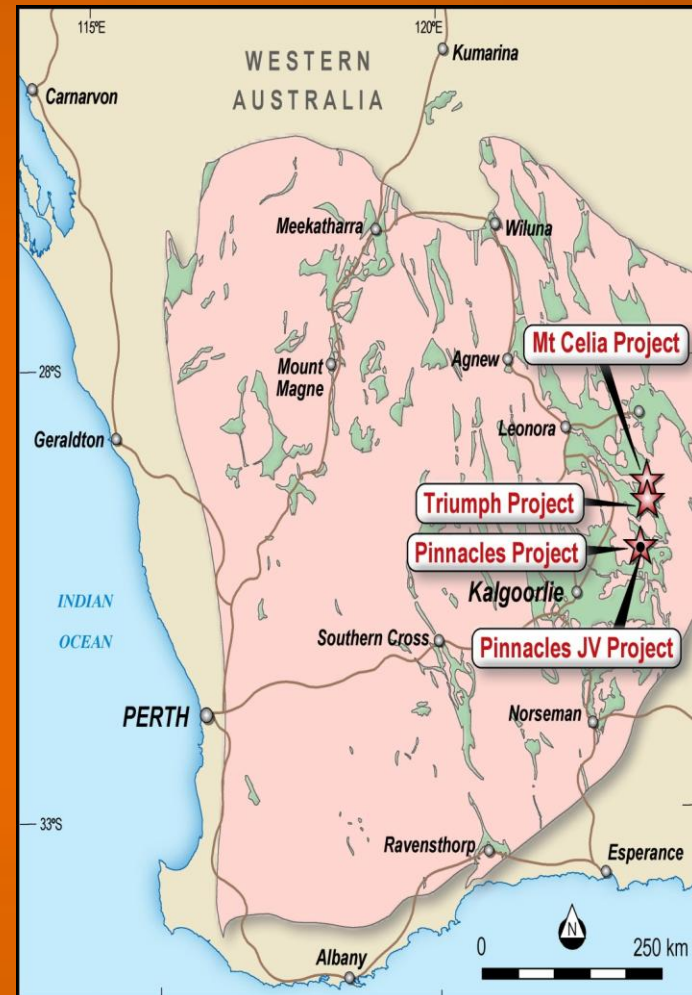
PO Box 2803

West Perth WA 6872

T: +61 8 9481 1749

F: +61 8 9481 1756

Web: www.nexus-minerals.com



Thank - You