

ASX Announcement



21 October 2015

COMPANY DETAILS

ABN: 62 147 346 334

PRINCIPAL REGISTERED OFFICE

Potash West NL
Suite 3
23 Belgravia Street
Belmont WA 6104

POSTAL ADDRESS

PO Box 588
Belmont WA 6984

W www.potashwest.com.au

E info@potashwest.com.au

P +61 8 9479 5386

F +61 8 9475 0847

ASX CODE

PWN

FRANKFURT CODE

A1JH27

OTC PINK CODE

PWNNY

CORPORATE INFORMATION

(21 October 2015)
231 M Ordinary shares
36M Partly paid shares
5M Unlisted options

BOARD OF DIRECTORS

Adrian Griffin
(Non-Executive Chairman)

Patrick McManus
(Managing Director)

Chew Wai Chuen
(Non-Executive Director)

Natalia Streltsova
(Non-Executive Director)

SEPTEMBER 2015 QUARTERLY REPORT

HIGHLIGHTS

Dandaragan Trough

- Updated Scoping Study confirms robust, long-lived phosphate project.
 - NPV₈ \$378 M
 - Capex \$205 M
 - EBITDA \$ 52M pa
 - Mine life +40 years
- Process development testwork commenced for preliminary feasibility study.

Germany

- Agreement to vending the South Harz project into an IPO.
- PWN to hold a significant shareholding in Davenport Resources, post transaction.

Dandaragan Trough Project

Potash West NL ("Potash West" or "the Company") has continued to advance the Dinner Hill Potash and Phosphate Deposit, located some 200km north of Perth in Western Australia, Figure 1. Dinner Hill forms part of the larger Dandaragan Trough landholding having an area of over 2,600km². Sedimentary rocks within the trough contain glauconite, a potash rich mica, and phosphate nodules. The objective is to produce phosphate and potash fertilisers and a range of valuable by-products from the phosphate and glauconite present within the sediments of the Dandaragan Trough.

During the quarter results from previous work were used to update the phosphate scoping study

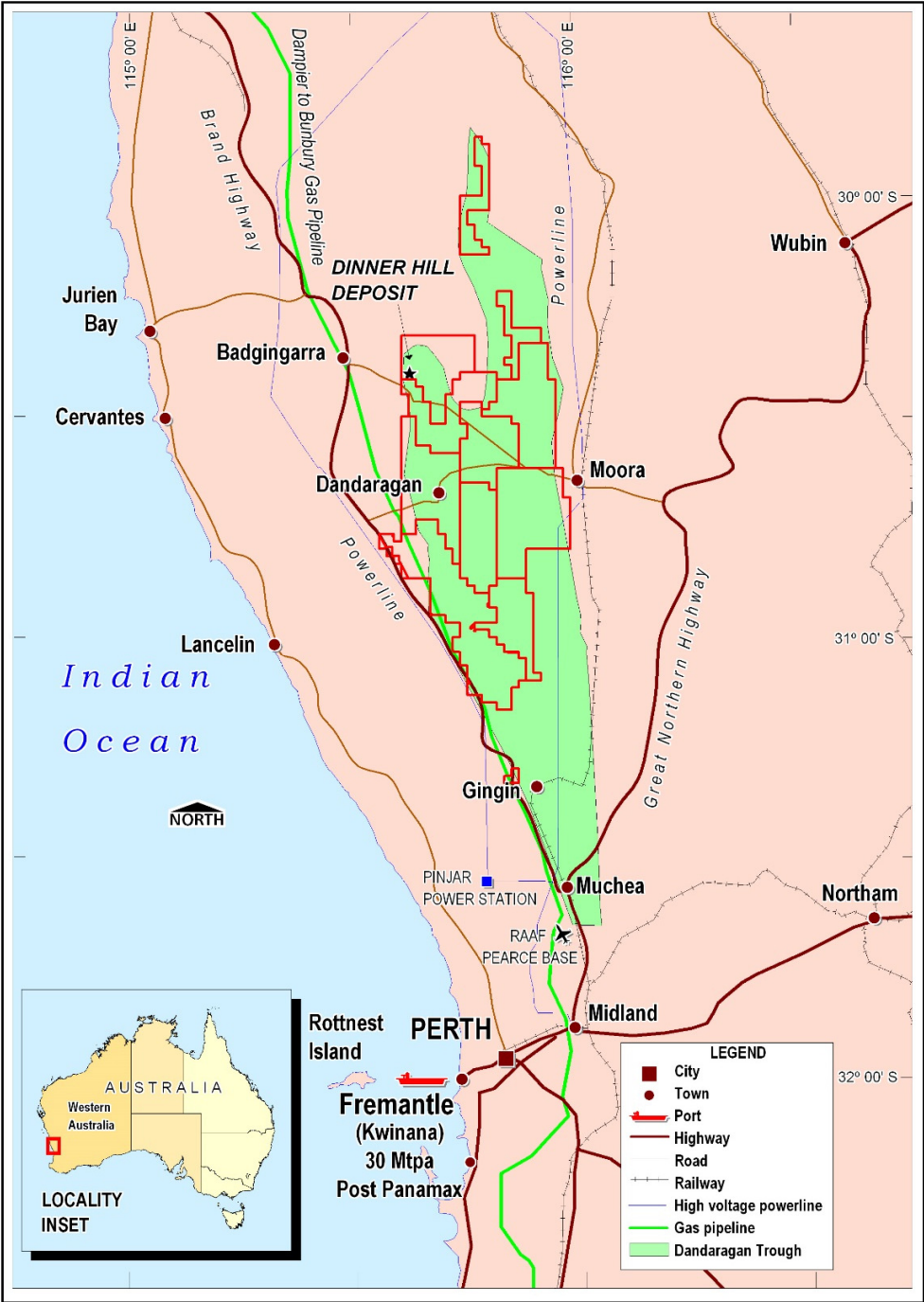


Figure 1: Location plan, Dandaragan Trough Project

Mineral Resource

The Dinner Hill Resource now covers an area of some 18km². The resource is shown below.

Dinner Hill Deposit Resource Summary ¹

Resource	Category	Tonnes (Mt)	P ₂ O ₅ (%)	K ₂ O (%)
Phosphate	Indicated	250	2.9	
Potash				
Potash resources included within the phosphate resource area	Indicated	155		4.1
	Inferred	20		2
	Totals	175		3.8
Potash resource outside the phosphate resource area	Indicated	18		3.8
Total Potash Resources	Indicated	175		4.0
	Inferred	20		2
	Totals	195		3.8

Note: Totals may differ from sum of individual items due to rounding

1 – ASX (ASX release 03 June 2015).

The Dandaragan Trough project has unique advantages of excellent connectivity to transport facilities, infrastructure and proximity to local and regional markets. The Dinner Hill resource is located less than 200km from two major bulk export ports, Kwinana and Geraldton and is well situated in relation to major project infrastructure.

Dinner Hill Scoping Study

Based on the new phosphate Indicated Mineral Resource of 250 Mt at 2.9% P₂O₅, a new mining plan was developed. The scoping study completed in 2013 (refer ASX announcement: 19 Sept 2013) has been updated. Major changes have been:

- Mining inventory increased from 80 Mt @ 2.8% to 237 Mt @ 2.9% P₂O₅.
- Mine life, for modelling purposes, increased from 20 years to forty years (150Mt of ore, 63 % of inventory).
- Selling price of single superphosphate, dropped from US\$ 350 to US\$227/t.
- Exchange rate dropped from \$A/\$US 90c to 70c.
- Average selling price dropped from \$A370 to \$A 320/t.
- Capital cost estimate increased from \$A136 to \$A205 M, due to inclusion of a sulphuric acid plant.
- Operating cost estimate reduced by 10%, due to reduction in mining and oil costs.

The update was reported to the ASX on 30 September 2015. Key metrics are:

- Project NPV \$378 million
- Capital Costs \$205 million
- EBITDA, pa \$52 million
- Revenue, pa \$128 million
- Cash costs, pa \$76 million
- Ore grade,
 - first 10 years 4.9% P₂O₅
 - 40 years 3.5% P₂O₅

These results indicate the possibility of a long-lived, significant scale project. This will underpin the long-term development of Dinner Hill as a supplier of fertilisers to the region, with the cashflow from phosphate production financing the progression of the K-Max project.

Metallurgical testwork on a range of samples from Dinner Hill is in progress. It is expected that a status report would be made in December 2015.

Technology

The K-Max process has been developed by our technology partners, Strategic Metallurgy (**SM**). The development was financed by the Company and the IP is 100% owned by Potash West. SM have built upon the K-Max technology and developed an innovative process to extract Lithium from micas such as Lepidolite and Zinnwaldite.

In recognition of the importance of the K-Max process as a base for Lithium extraction, SM agreed to vest 25% ownership of the Lithium technology to Potash West, this takes the form of shares in a public unlisted company, Lepidico. Lepidico's activities are reported on its website: www.lepidico.com.au. As the Lepidico project has advanced PWN has been diluted and the current shareholding is 8.74%. PWN and SM will work together to maximize the value of this IP to the benefit of both parties.

SM has issued licences to use the technology to Lithium Australia (formerly Cobre Montana) (ASX:LIT) (refer CXB announcement 26 September 2014). Lithium Australia is pursuing opportunities to meet the demands of a rapidly growing Lithium market.

South Harz Project

The Company has earned a 55% interest in a company, East Exploration Pty Ltd (EE), which holds exploration licences in the South Harz region of Germany, (Figure 2). The South Harz region has a long history of potash mining, dating back to the late 1890s. Extensive exploration work and R&D was carried out in the period from the 1960s to the 1980s. This confirmed that substantial potash deposits in the form of sylvinite (KCl/NaCl) and carnallite (KCl/MgCl) still remain in this region.

A review of some the archived exploration data relating to historical drilling on Küllstedt has been completed and an Exploration Target estimated. This work confirmed the potential of the project to host thick sequences of sylvinite and carnallite mineralisation over wide areas. A summary report is contained within the ASX announcement of 4 March 2015 and the full documentation provided by the the Company's geological consultants is available on the Potash West website. Planning is in progress for a verification drilling program which is expected to consist of a 3 to 4 confirmatory holes which could allow reporting of a JORC compliant Inferred Mineral Resource.

The Company, and the other owners of East Exploration, commenced negotiations with Arunta Resources (ASX:AJR), as reported to the ASX on 18th August 2015. The objective is to vend 100% of East Exploration into Davenport Resources (Davenport), in return for shares. Davenport is a wholly owned subsidiary of Arunta, it is proposed to list Davenport on the Australian Stock Exchange. The transaction will require the approval of Arunta and Potash West shareholders, planned for December and November 2015. The transaction is expected to be completed in the first quarter of calendar 2016.

Post listing Potash West will own approximately 20 million Davenport shares, plus performance shares to be issued on achieving certain project milestones. As part of the transaction Arunta has advanced \$100,000 to East Exploration, and will forward a further \$150,000, to fund work on planning the proposed drilling programme.

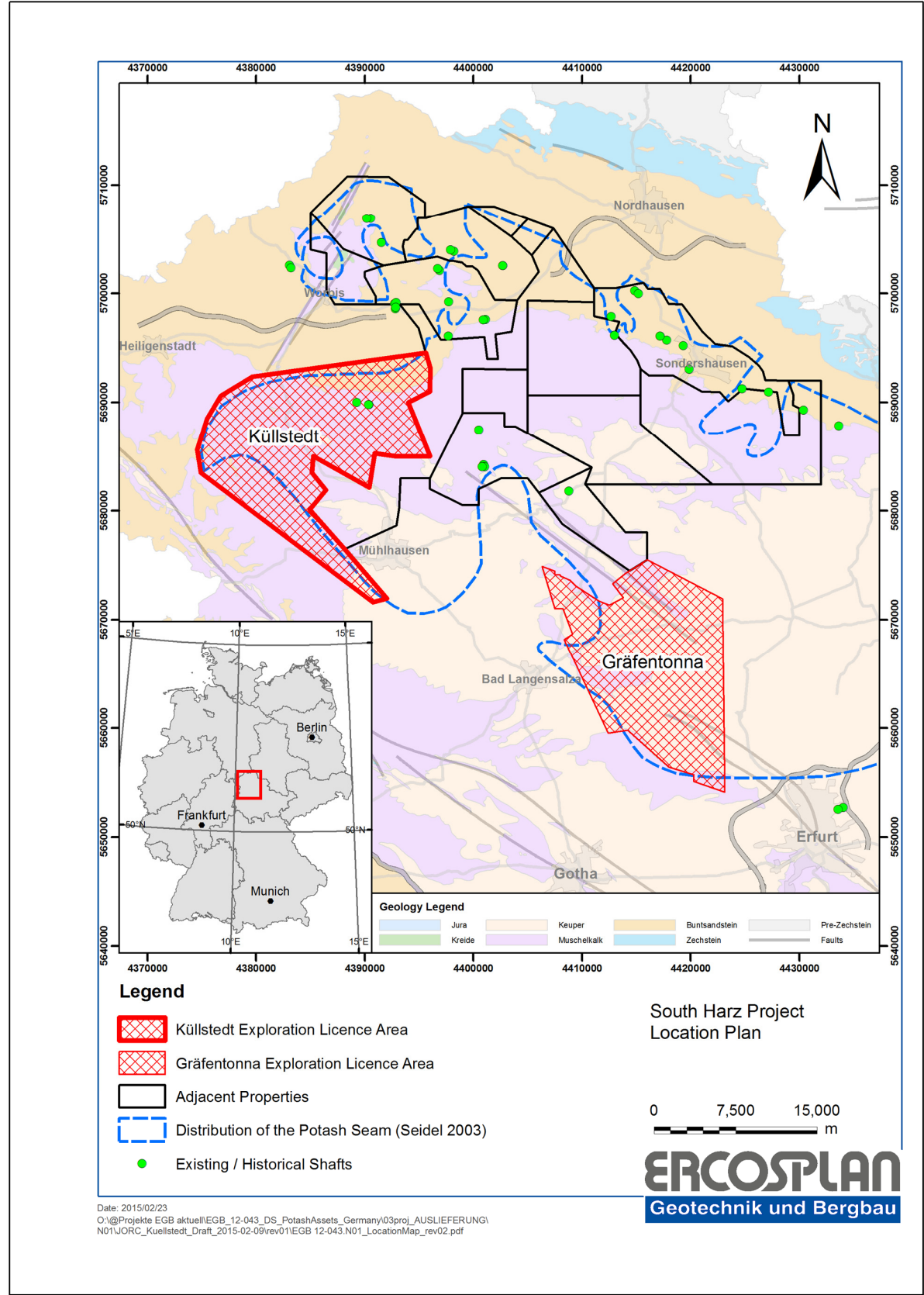


Figure 2: South Harz Project Location

CORPORATE

- \$1,140,000 was raised via a placement to sophisticated investors.

Announcements

The following ASX announcements were made during the quarter:

- September 30, 2015 Appendix 4G Key to Disclosures
- September 30, 2015 Annual Report to shareholders
- September 30, 2015 PWN Capital Raising Update
- September 30, 2015 PWN October 2015 Investor Presentation
- September 30, 2015 PWN Scoping Study Results
- September 04, 2015 PWN Update on Capital Raising
- August 31, 2015 Potash West Update on Lepidico Activities
- August 28, 2015 Mining Scout Interview
- August 26, 2015 Question and Answer Session
- August 20, 2015 Amendment to South Harz Potash Project Funding Announcement
- August 18, 2015 AJR: Davenport – Term Sheet to acquire South Harz Project
- August 18, 2015 Davenport Resources Listing Funds South Harz Potash Project
- July 31, 2015 Quarterly Activities and Cashflow Report for the Period 30 June 2015
- July 22, 2015 PWN Reports Upgrade to Dinner Hill Exploration Targets
- July 07, 2015 s708A Notice, LR3.10.5A Notice and Appendix 3B

The following announcements were made subsequent to 30 September 2015:

- October 7, 2015 Amended Potash West Presentation 2015
- October 13, 2015 s708A Notice, LR3.10.5A Notice and Appx 3B

Cash on Hand

At 30 September 2015, \$1.9 million cash was available.

Tenement Summary

The following information is provided in accordance with ASX Listing Rule 5.4.3:

Country	Tenement	Tenement Interest held at 1 July 2015	Interest acquired / disposed of during quarter	Tenement Interest held at 30 September 2015
WA	E70/3418	100% ⁽¹⁾	N/A	100%
WA	E70/3987	100% ⁽¹⁾	N/A	100%
WA	E70/3988	100% ⁽¹⁾	N/A	100%
WA	E70/3989	100% ⁽¹⁾	N/A	100%
WA	E70/4124	Pending	N/A	Pending
WA	E70/4137	100%	N/A	100%
WA	E70/4138	100%	N/A	100%
WA	E70/4139	100%	N/A	100%
WA	E70/4471	100%	N/A	100%
WA	E70/4609	0%	100%	100%
WA	E70/4687	Pending	N/A	Pending

(1) Denotes Beneficial holding of the Mineral Rights to Glaucinite & Phosphate, and any byproducts resulting

For further information contact:

Potash West NL:

Patrick McManus
Managing Director
Tel: +61 (08) 9479 5386
Email: info@potashwest.com.au
Web: www.potashwest.com.au

Media:

Professional Public Relations
Colin Hay
Tel: +61 (08) 9388 0944

About Potash West

Potash West (ASX:PWN) is an exploration company focused on developing large greensand deposits in West Australia's Perth Basin. The Company aims to define a substantial resource base and investigate how best to recover potash and other minerals from the Dandaragan Trough. The project is well situated in relation to infrastructure, with close access to rail, power and gas. A successful commercial outcome will allow the Company to become a major contributor to the potash and phosphate markets at a time of heightened regional demand.

The Company has a major land holding over one of the world's largest known glauconite deposits, with exploration licenses and applications covering an area of over 2,600km². Previous exploration indicates glauconite sediments are widespread for more than 150km along strike and 30km in width. Current JORC compliant Indicated Mineral Resources stand at 250Mt at 2.9% P₂O₅ of phosphate mineralisation and 175Mt at 4.2% K₂O, amenable to processing by the K-Max process.

Competent Person's Statement:***Dandaragan Trough Project***

The production targets and other information in this announcement that relate to Mineral Resources, are based on, and fairly represent, the Mineral Resource and supporting documentation extracted from the reports which have been prepared by a Competent Person in compliance with the JORC Code (2012) and released to ASX by the Company on 03 June 2015 and 22 July 2015. Potash West confirms that it is not aware of any new information or data that materially affect the information included in the original announcements. All material assumptions and technical parameters underpinning the Mineral Resource estimate in those previous ASX releases continue to apply and have not materially changed. The Company further confirms that the form and context in which the Competent Person's findings are presented have not been materially modified from the original market announcement.

Appendix 5B

Mining exploration entity and oil and gas exploration entity quarterly report

Introduced 01/07/96 Origin Appendix 8 Amended 01/07/97, 01/07/98, 30/09/01, 01/06/10, 17/12/10, 01/05/2013

Name of entity

Potash West NL

ABN

62 147 346 334

Quarter ended ("current quarter")

30 September 2015

Consolidated statement of cash flows

		Current quarter \$A'000	Year to date (3 months) \$A'000
Cash flows related to operating activities			
1.1	Receipts from product sales and related debtors		
1.2	Payments for (a) exploration & evaluation	(133)	(133)
	(b) development		
	(c) production		
	(d) administration	(352)	(352)
1.3	Dividends received		
1.4	Interest and other items of a similar nature received	6	6
1.5	Interest and other costs of finance paid		
1.6	Income taxes paid		
1.7	Other (Government grant and R&D refund)	179	179
	Net Operating Cash Flows	(300)	(300)
Cash flows related to investing activities			
1.8	Payment for purchases of: (a) prospects		
	(b) equity investments	-	-
	(c) other fixed assets	(3)	(3)
1.9	Proceeds from sale of: (a) prospects		
	(b) equity investments		
	(c) other fixed assets		
1.10	Loans to other entities		
1.11	Loans repaid by other entities		
1.12	Other (provide details if material)		
	Net investing cash flows	(3)	(3)
1.13	Total operating and investing cash flows (carried forward)	(303)	(303)

+ See chapter 19 for defined terms.

Appendix 5B

Mining exploration entity and oil and gas exploration entity quarterly report

1.13	Total operating and investing cash flows (brought forward)	(303)	(303)
	Cash flows related to financing activities		
1.14	Proceeds from issues of shares, options, etc.	761	761
1.15	Proceeds from sale of forfeited shares		
1.16	Proceeds from borrowings		
1.17	Repayment of borrowings		
1.18	Dividends paid		
1.19	Other (Equity Raising Costs)	(90)	(90)
	Net financing cash flows	671	671
	Net increase (decrease) in cash held	368	368
1.20	Cash at beginning of quarter/year to date	1,542	1,542
1.21	Exchange rate adjustments to item 1.20		
1.22	Cash at end of quarter	1,910	1,910

Payments to directors of the entity, associates of the directors, related entities of the entity and associates of the related entities

		Current quarter \$A'000
1.23	Aggregate amount of payments to the parties included in item 1.2	109
1.24	Aggregate amount of loans to the parties included in item 1.10	

1.25 Explanation necessary for an understanding of the transactions

Item 1.23 relates to Directors Remuneration, Directors Fees and Superannuation Contributions.

Non-cash financing and investing activities

2.1 Details of financing and investing transactions which have had a material effect on consolidated assets and liabilities but did not involve cash flows

--

+ See chapter 19 for defined terms.

Mining exploration entity and oil and gas exploration entity quarterly report

- 2.2 Details of outlays made by other entities to establish or increase their share in projects in which the reporting entity has an interest

--

Financing facilities available

Add notes as necessary for an understanding of the position.

	Amount available \$A'000	Amount used \$A'000
3.1 Loan facilities		
3.2 Credit standby arrangements		

Estimated cash outflows for next quarter

	\$A'000
4.1 Exploration and evaluation	400
4.2 Development	
4.3 Production	
4.4 Administration	300
Total	700

Reconciliation of cash

Reconciliation of cash at the end of the quarter (as shown in the consolidated statement of cash flows) to the related items in the accounts is as follows.	Current quarter \$A'000	Previous quarter \$A'000
5.1 Cash on hand and at bank	1,910	1,542
5.2 Deposits at call		
5.3 Bank overdraft		
5.4 Other (provide details)		
Total: cash at end of quarter (item 1.22)	1,910	1,542

+ See chapter 19 for defined terms.

Changes in interests in mining tenements and petroleum tenements

	Tenement reference and location	Nature of interest (note (2))	Interest at beginning of quarter	Interest at end of quarter
6.1	Interests in mining tenements and petroleum tenements relinquished, reduced or lapsed	NIL	N/A	NIL
6.2	Interests in mining tenements and petroleum tenements acquired or increased	NIL	N/A	NIL

Issued and quoted securities at end of current quarter

Description includes rate of interest and any redemption or conversion rights together with prices and dates.

	Total number	Number quoted	Issue price per security (see note 3) (cents)	Amount paid up per security (see note 3) (cents)
7.1	Preference			
	*securities			
	<i>(description)</i>			
7.2	Changes during quarter			
	(a) Increases through issues			
	(b) Decreases through returns of capital, buy-backs, redemptions			
7.3	*Ordinary securities	229,679,615 35,960,024	229,679,615 35,960,024	Fully paid \$0.001 Fully paid \$0.049
7.4	Changes during quarter			
	(a) Increases through issues	550,000 700,000	550,000 700,000	\$0.048 \$0.050
	(b) Decreases through returns of capital, buy-backs	27,500,000	27,500,000	\$0.040
7.5	*Convertible debt securities			
	<i>(description)</i>			

+ See chapter 19 for defined terms.

Mining exploration entity and oil and gas exploration entity quarterly report

7.6	Changes during quarter (a) Increases through issues (b) Decreases through securities matured, converted				
7.7	Options (description and conversion factor)			<i>Exercise price</i>	<i>Expiry date</i>
		100,000	-	\$0.400	8 September 2016
		100,000	-	\$0.600	8 September 2016
		1,350,000	-	\$0.355	13 November 2015
		1,000,000	-	\$0.130	25 October 2015
		500,000	-	\$0.150	7 February 2017
		1,992,188	-	\$0.087	6 November 2017
7.8	Issued during quarter				
7.9	Exercised during quarter				
7.10	Expired during quarter				
7.11	Debentures (totals only)				
7.12	Unsecured notes (totals only)				

Compliance statement

- 1 This statement has been prepared under accounting policies which comply with accounting standards as defined in the Corporations Act or other standards acceptable to ASX (see note 5).
- 2 This statement does give a true and fair view of the matters disclosed.

Sign here: Patrick McManus Date: 21-Oct-15
(Director)

Print name: Patrick McManus

Notes

- 1 The quarterly report provides a basis for informing the market how the entity's activities have been financed for the past quarter and the effect on its cash position. An entity wanting to disclose additional information is encouraged to do so, in a note or notes attached to this report.
- 2 The "Nature of interest" (items 6.1 and 6.2) includes options in respect of interests in mining tenements and petroleum tenements acquired, exercised or lapsed during the reporting period. If the entity is involved in a joint venture agreement and there are conditions precedent which will change its percentage interest in a mining tenement or petroleum tenement, it should disclose the change of percentage interest and conditions precedent in the list required for items 6.1 and 6.2.
- 3 **Issued and quoted securities** The issue price and amount paid up is not required in items 7.1 and 7.3 for fully paid securities.
- 4 The definitions in, and provisions of, *AASB 6: Exploration for and Evaluation of Mineral Resources* and *AASB 107: Statement of Cash Flows* apply to this report.
- 5 **Accounting Standards** ASX will accept, for example, the use of International Financial Reporting Standards for foreign entities. If the standards used do not address a topic, the Australian standard on that topic (if any) must be complied with.

== == == == ==