

ASX ANNOUNCEMENT

September 2015 Quarterly Activities Report



Rumble Resources Ltd (“Rumble” or “the Company”) is pleased to provide an update of the Company’s activities. During the quarter Rumble focussed its activities in the Fraser Range.

Technical Advisory Board

- **A highly experienced Technical Advisory Board has been established to review Rumble’s current assets and provide next stage implementation strategies**

Sidewinder Nickel Sulphide Project – Rumble 100%

- **Valuable technical data acquired including drilling, surface geochemical sampling, mapping and both ground and airborne geophysical survey data**
- **Project covers 96sq km’s in the Windimurra Igneous Complex**
- **Limited previous drilling program of seven Reverse Circulation holes and three diamond drill holes intersected significant Ni, Cu and Co sulphide mineralisation including an intersection of 13m @ 0.91% Ni, 0.58% Cu, 0.08% Co from 104m in hole CPRC004**
- **Sidewinder contains multiple “walk-up” drill targets that were either untested or only partially tested by previous drilling.**
- **Technical team to put in place a staged exploration program with the view to drill the highly prospective nickel sulphide targets**

Fraser Range Projects

- **Technical team to review each asset & make recommendations for the next stages of exploration**

Technical Advisory Board

BM Geological Services and a leading industry consultant to the Company’s Technical Advisory Board. A highly experienced technical team has been established to review Rumble’s current projects and provide next stage implementation strategies.

BM Geological Services Pty Ltd (BMGS) is a Western Australian based company servicing the global minerals industry. BMGS commenced business in 2003 filling a niche market servicing the junior mining houses who had acquired nickel properties from WMC Resources within the Kambalda district. These companies included Titan Resources, Donegal Mining/View Resources, Panoramic Resources, Goldfields Mine Management and Lightning Nickel; and later servicing WMC/BHP Billiton at the Perseverance Deeps Project at Leinster Nickel Operations, and Lionore at the Black Swan and Avalon Nickel Projects. BMGS is a partnership between Mr Darryl Mapleson and Mr Andrew Bewsher.

Mr Darryl Mapleson is a geologist with 26 years industry experience working for Dominion Mining, WMC Resources, Teck Cominco and Mincor Resources. He has worked on Feasibility Studies in Kambalda, Australia (nickel & gold), Vietnam (nickel), Mauritania (Au) and Finland (PGE & Au). He has substantial operational and exploration experience with nickel and gold, and was formerly the Chief Mine Geologist for Mincor Resources.

Mr Andrew Bewsher has 19 years industry experience in the Mining and Exploration Industry and has worked in Australia and Vietnam on gold and nickel projects. He has worked in the mining and exploration industry in Australia for Perilya Ltd in the Glengarry Basin of Western Australia; for Normandy Mining in the Yandal Greenstone Belt within the Yilgarn Craton of WA and for Mincor Resources in the Eastern Goldfields of the Yilgarn Craton, WA.

Rumble Resources Ltd

Suite 9, 36 Ord Street,
West Perth, WA 6005

T +61 8 6555 3980

F +61 8 6555 3981

rumbleresources.com.au

ASX RTR

Executives & Management

Mr Shane Sikora
CEO

Mr Andrew McBain
Non-executive Director

Mr Matthew Banks
Non-executive Director

Mr Michael Smith
Non-executive Director

Mr Bruno Senegue
Company Secretary

Dr Jon Hronsky is a consultant with more than 30 years of experience in the mineral exploration industry, primarily focused on project generation, technical innovation and exploration strategy development. Jon has worked across a diverse range of commodities and has particular expertise in targeting for nickel sulphide and gold deposits. His targeting work led to the discovery of the West Musgrave nickel sulphide province in Western Australia. Jon is currently Chairman of the Board of the Centre for Exploration Targeting in Western Australia and was the 2009 Society of Economic Geology Distinguished Lecturer. Jon is one of the Principals at geological consultancy Western Mining Services (Aust) Pty Ltd. Prior to joining WMS, Jon was Manager-Strategy & Generative Services for BHP Billiton Mineral Exploration and before that, Global Geoscience Leader for WMC Resources Ltd.

Sidewinder Project – 100% Rumble

Rumble's Sidewinder project is located 80 km southeast of Mt Magnet, Western Australia. The Sidewinder project comprises three licence applications, E58/484, E58/491 and E59/2119 covering an area of 96 km². The regional geology is dominated by the Windimurra Complex, which is a large differentiated layered ultramafic to mafic intrusion. It is the largest layered intrusive body of its type in Australia. Many of these types of complexes nationally and globally host economically significant deposits of Ni-Cu sulphides.

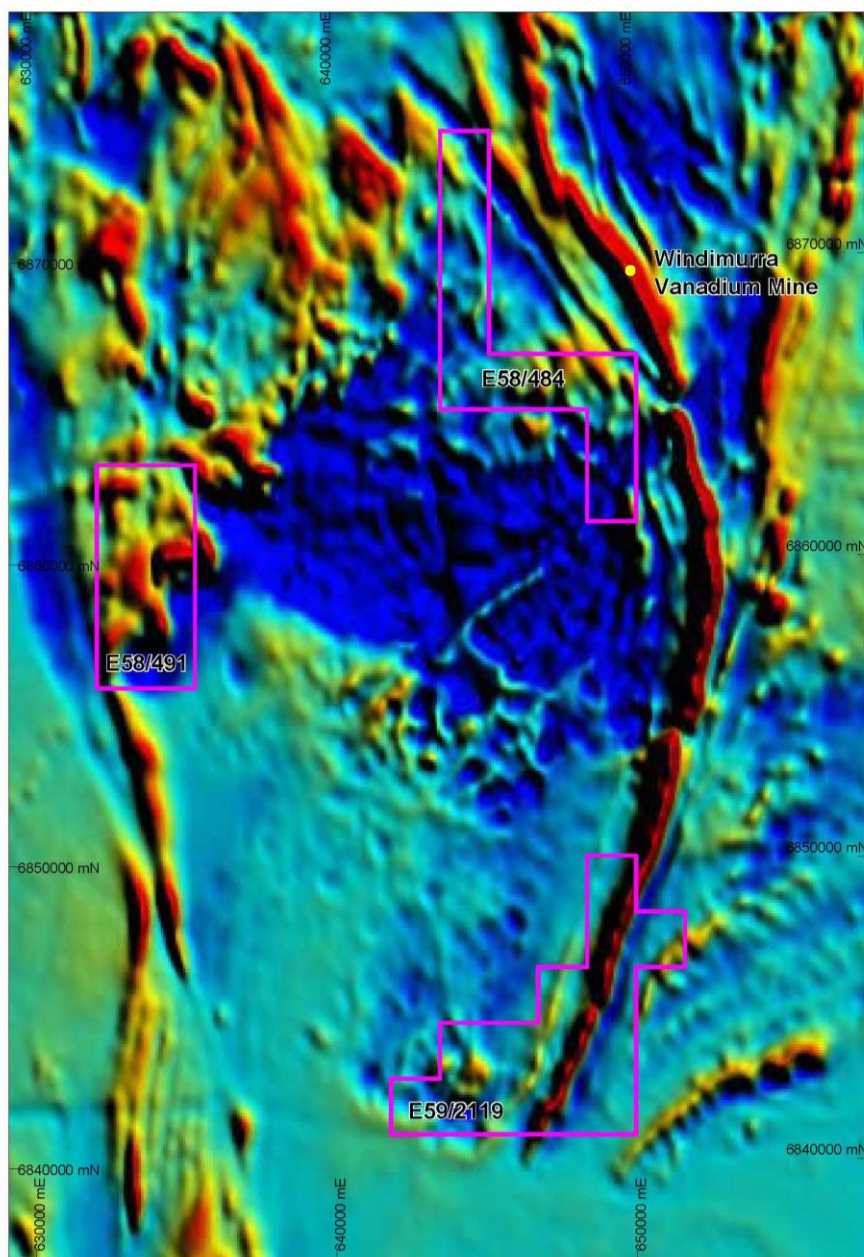


Figure 1 – Sidewinder Project Licences on TMI Aeromagnetic Imagery

Rumble has acquired valuable technical data containing drilling, surface geochemical sampling, mapping and both ground and airborne geophysical survey data. Previous exploration identified significant nickel and copper sulphide mineralisation and multiple other targets that require further investigation

Previous historical exploration included a regional airborne electromagnetic survey (ReptEM), airborne magnetic and ground gravity surveys, which identified a number of potential targets within the current E59/2119 licence area.

Further exploration for nickel and copper was carried out by Flinders Mines Ltd (ASX: FMS) between 2009 and 2013. Work completed by Flinders Mines included surface sampling, geological mapping, ground Electromagnetic (EM) surveying and airborne EM surveying (VTEM) and drilling. Exploration drilling during 2012 and 2013, comprised seven Reverse Circulation (RC) holes (CPRC001 – CPRC007) and three diamond drill holes (PCPDD001 – CPDD003) targeting two discrete airborne electromagnetic (VTEM) targets, CG02 and CG39 – see figure 3 and 4.

The drilling intersected a layered sequence of gabbro, leucogabbro and pyroxenite, with the ultramafic (pyroxenite) units hosting sulphide mineralisation of varying intensity, from disseminated to massive. Sulphide composition is recorded as being pyrrhotite dominant, with varying quantities of chalcopyrite, pyrite and pentlandite

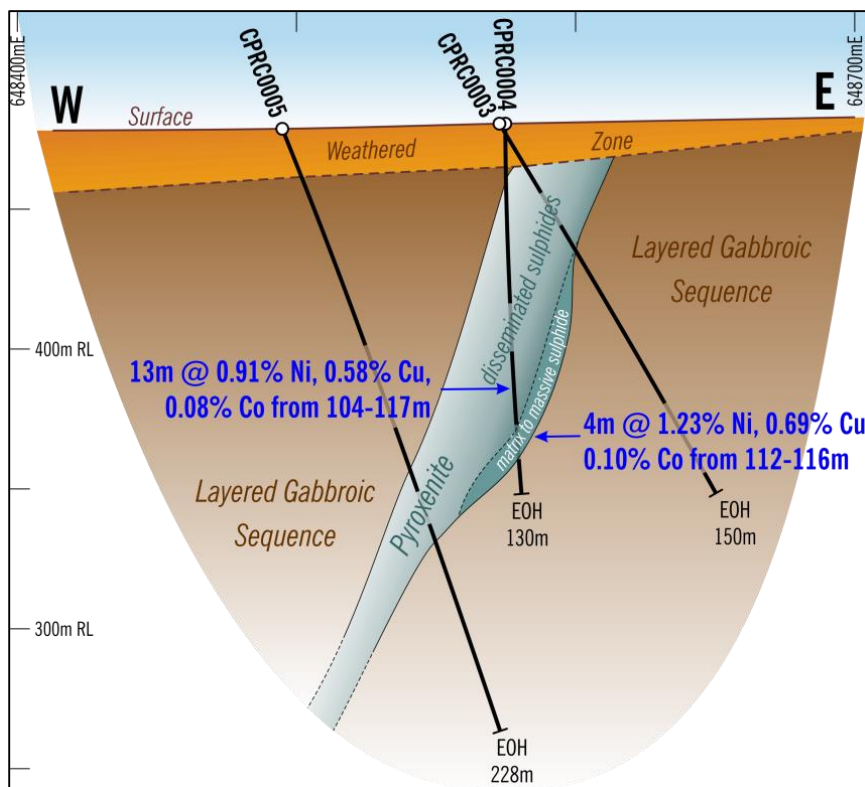


Figure 2 - Cross section 6846375mN target CG39, showing intersected sulphide mineralisation

A number of significant intersections were recorded from the drilling, including;

Drillhole CPRC004

- 13m at 0.91% Ni, 0.58% Cu, 0.08% Co from 104m,
- Including, 4m at 1.23% Ni, 0.69% Cu, 0.10% Co from 112m.

Drill Hole CPRC005

- 4m at 0.59% Ni, 0.46% Cu, 0.05% Co from 152m,

Drill Hole CPDD003

- 0.67m at 1.52% Ni, 1.33% Cu, 0.13% Co from 234m

Based on the historical exploration completed to date, Rumble believes there is potential for the discovery of further nickel sulphide mineralisation within E59/2119. The similarity of geophysical responses, observed geology and sulphide mineralisation at CG02 and CG39 suggests that these targets may be part of a wider mineralised intrusive system. Geophysical surveys, including Airborne EM surveying (VTEM) completed by Flinders Mines has identified a number of co-incident magnetic and electromagnetic anomalies within E59/2119, which remain to be followed-up by further exploration and drilling. Many of these anomalies are along strike and within similar lithologies to the mineralisation already identified.

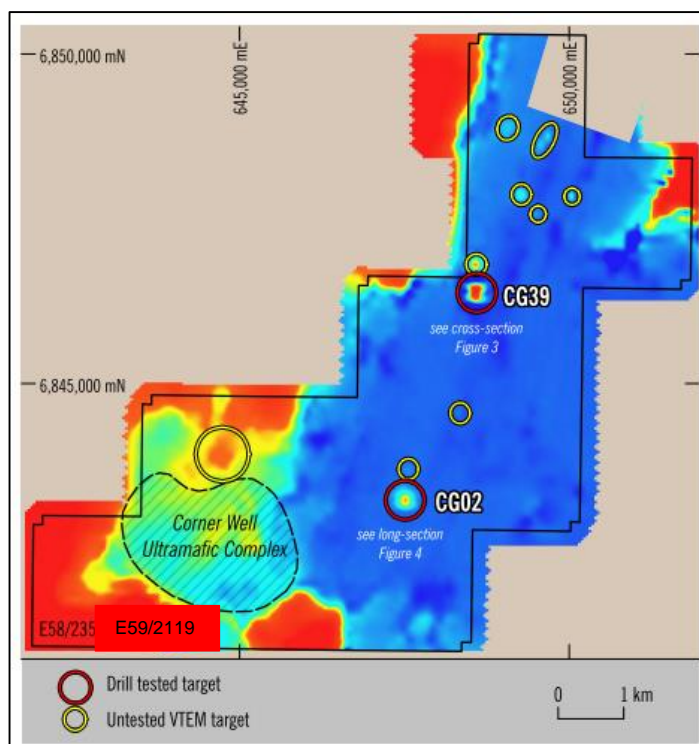


Figure 3 – Preliminary VTEM survey data, with drill tested targets CG02 and CG39

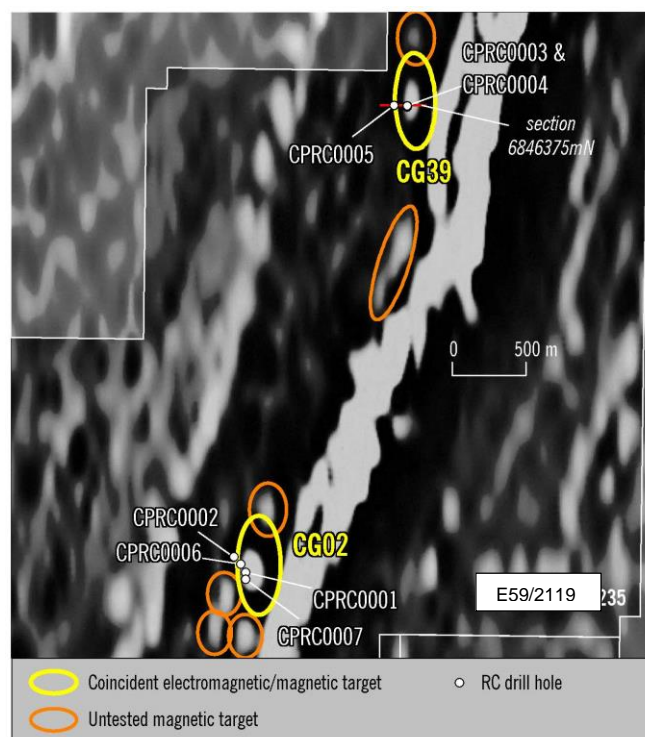


Figure 4 – RC drill collars and VTEM targets

Sidewinder Staged Exploration Process

Rumble is planning a systematic exploration program based on the advice of its highly experienced technical team. The technical team are reviewing the completed drilling, surface geochemical sampling, mapping and both ground and airborne geophysical surveys with a view to drill testing the highly prospective nickel sulphide targets. Following the internal review of the previous exploration undertaken at the Sidewinder project Rumble intends to provide additional information on the project and the planned exploration program that will commence, following the grant of the licences.

Fraser Range Projects Update

Rumble's technical advisory team will provide a collaborative review of the outcomes of the Company's recent drilling programs at the Big Red and Zanthus prospects, as well as continuing to advance preparations for the next stage of exploration at its other Fraser Range projects including the Thunderdome and Thunderstorm projects.

The Company will provide an update on upcoming exploration activities within its Fraser Range portfolio in the near future.

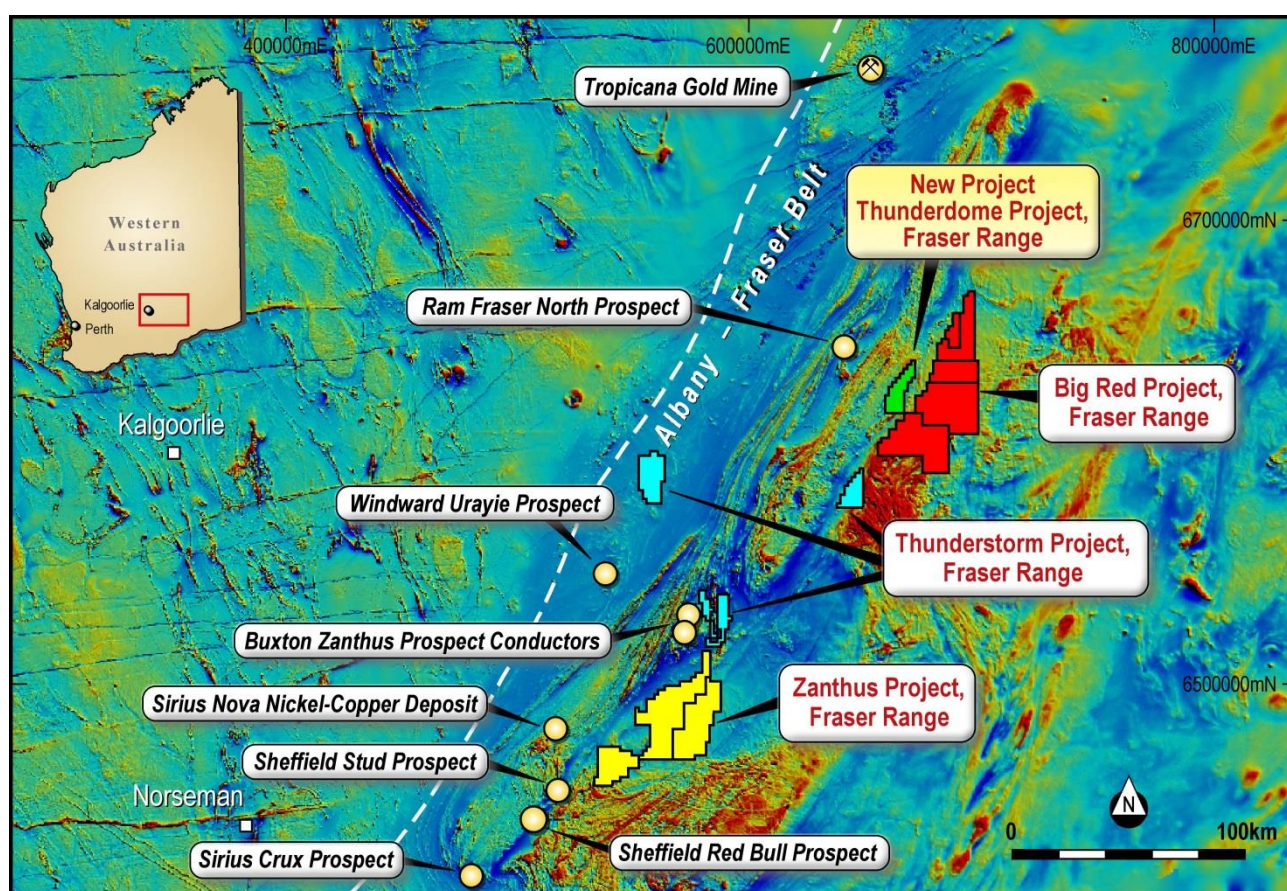


Figure 5 Rumble Fraser Range Holdings

Big Red Project, Fraser Range – 100% Rumble

No exploration was completed during the quarter. The Big Red Project is located 450 kilometres east of Kalgoorlie in the Fraser Range Western Australia.

A maiden drill program was completed in the December quarter consisting of 4 Mud Rotary/Diamond drill holes totalling 1,503.9m with the programme designed to test a 2km EM conductor outlined by a high powered ground EM survey

Rumble received all assays from its maiden drill program with the assays confirming all three holes intersected large disseminated mineralised sulphide zones within gabbros of the Fraser Range Complex. These sulphide zones are of considerable widths and indicate this large conductor to be a significant mineralised system. **Intersecting Fraser Range gabbro is of significance as it is the rock unit which can host magmatic Ni-Cu sulphide deposits.**

Detailed petrographic analysis of samples collected from the diamond drilling program confirmed the presence of magmatic sulphides. Nickel (pentlandite) and Copper (chalcopyrite) sulphides in association with pyrrhotite and magnetite are present within Fraser Range gabbro.

Following the drilling Rumble completed a Downhole EM Program which identified 2 very high conductance off hole conductors of 6000 to 8000 siemens which can be typical of massive sulphide accumulations. It is noted that the petrology did not indicate any conductive units within the lower portion of hole BRDD003. Hole BRDD002, which is located 400m to the south, contains the mineralogy present in magmatic nickel copper feeder systems with sulphides of pyrrhotite, chalcopyrite pentlandite and also magnetite. **This now makes these off hole conductors first order targets in the company's exploration of the Fraser Range.**

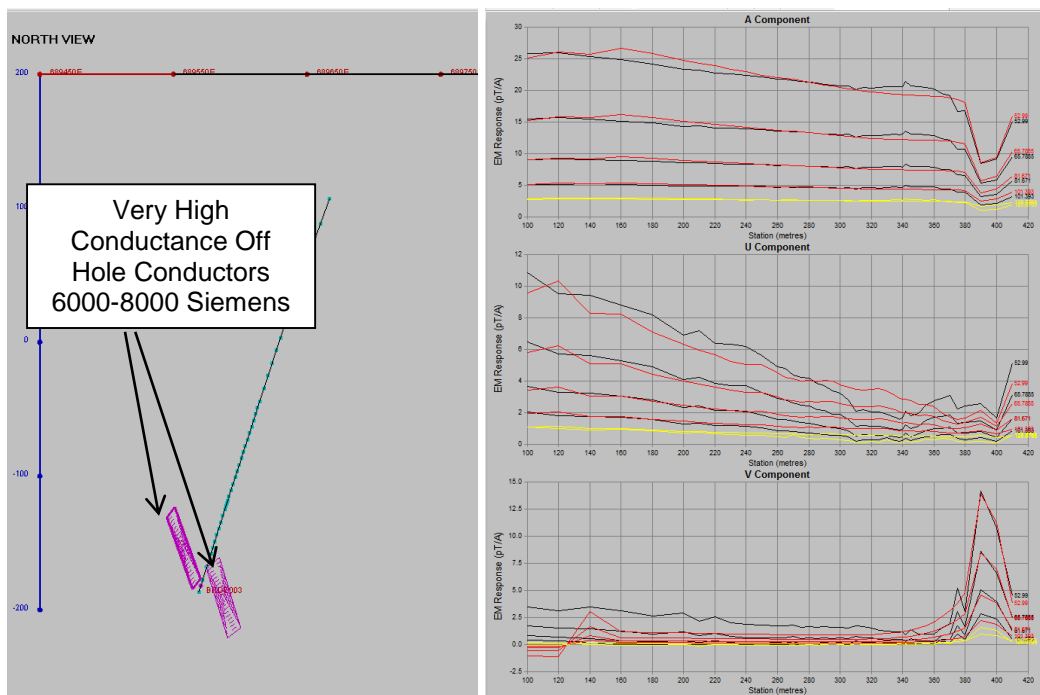


Figure 6. Model of 2 conductors of high conductance surrounding hole BDD003.

Thunderdome Project, Fraser Range – 100% Rumble

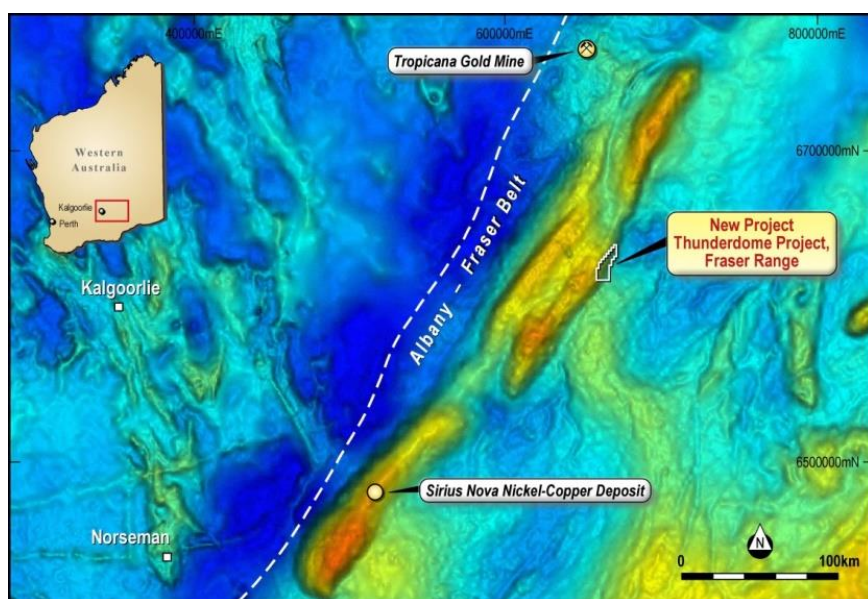


Figure 7: Thunderdome Project – located in main Fraser Range Gravity ridge

No exploration was completed during the quarter. The Thunderdome Project (E28/2366) covers 140sq km's in the main Fraser Range Gravity ridge associated with dense mafic/ultramafic rocks of the Fraser Range.

The project is adjacent to the Rockford project recently acquired by Legend Mining (ASX:LEG) from the Creasy Group as announced on 2 July 2015. It has a large prominent dome feature clearly visible on regional airborne magnetic images. This large dome feature is one of the largest in the Fraser Range and has a fold axis of some 22km. Within this larger target area are also several smaller features which may represent later stage intrusions.

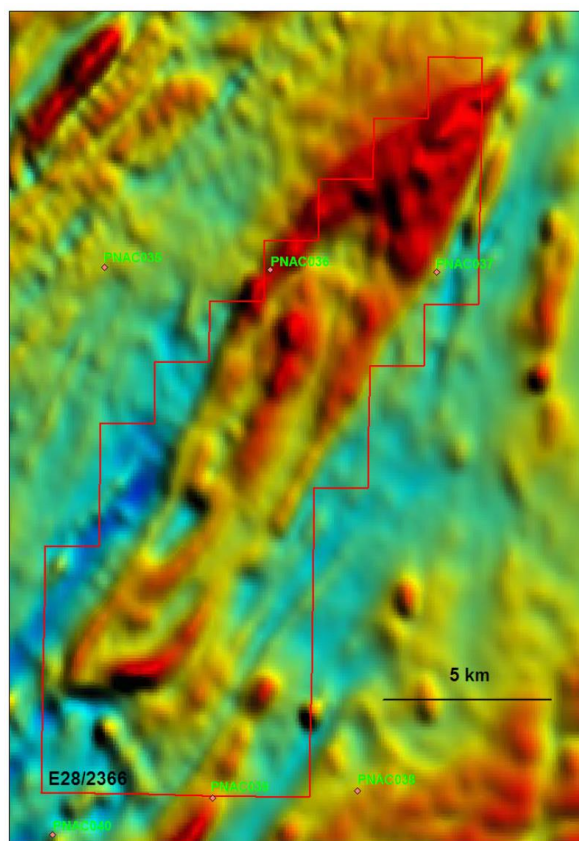


Figure 8: Thunderdome Project – Magnetics with drill hole locations.

Previous exploration for nickel and copper has recently been carried out by Ponton Minerals which is part of the Creasy Group. This regional exploration was of reconnaissance air core drilling on a 5km by 15km spacing with two holes within the current project area of E28/2366. One of the historic aircore drill holes (PNAC036) was highly anomalous in copper and zinc. Drill hole PNAC036 returned an intersection of 6m @ 0.11% Cu & 0.28% Zn from 51m (EOH 109.5m). This intersection was within a carbonaceous unit which is part of the cover sequence.

Work completed to date included:

- a recent 100m spaced airborne magnetic survey
- reprocessing of regional gravity data
- petrology on EOH rock chips from NAC036

Zanthus Project, Fraser Range

The Zanthus Project is located 20km's east of the Nova-Bollinger nickel copper massive sulphide discoveries in the Fraser Range, Western Australia. Rumble is earning up to 75% from Blackham Resources Ltd (ASX:BLK).

Rumble completed it's maiden drill program at the Zanthus Project during the June quarter 2015 (see ASX announcement 3rd July 2015). The drill program consisted of five RC/diamond holes targeting a cluster of five bedrock conductors in and around an eye feature identified through geophysics. All five drill holes were pre-collared with RC and NQ diamond tails were completed to the target zones. A total of five holes were completed for 1081m, four holes intersected graphitic schists which are interpreted as being the target conductors, whilst hole ZNDD001 did not intersect any conductive material.

A downhole EM survey of the drill holes was completed during the June quarter 2015, with the data highlighting bed rock conductors consistent with the geology observed in the RC and diamond drilling program.

Thunderstorm Project, Fraser Range – 100% Rumble

No exploration was completed during the quarter. Applications E28/2527, E28/2528 and E28/2529 cover 160sq km's in the Fraser Range. There are portions of these tenements that are subject to competing tenement applications and Rumble has lodged 'objections to grant' which is scheduled for Kalgoorlie Wardens Court. These applications about the Buxton Resources Ltd prospective Zanthus project that are currently RC drill testing 2 high priority conductors on the project. Previous drilling by Buxton identified three separate zones of finely disseminated, magmatic nickel-copper sulphides at their Zanthus project. The presence of magmatic nickel sulphides within mafic to ultramafic intrusive rocks (similar to the host rocks at Nova- Bollinger) indicates that the project is highly fertile and prospective for the discovery of nickel-copper sulphide mineralisation.

Exploration licence E28/2523 was granted during the quarter and covers 206 sq km's in the Northern Foreland of the Albany - Fraser Range. This has been interpreted to host similar intrusive features to that being explored by Windward Resources Uraryie and Uraryie South Prospects. Drilling in December 2014 of the Urayie prospect returned anomalous nickel assays up to 0.55% Ni. Initial drilling of the Uraryie South Intrusive complex by Windward commenced during late September 2015.



Beadell Project, Western Australia

No exploration was completed.

Canegrass Project Western Australia

No exploration was completed.

Burkina Faso Permits, West Africa

No Exploration Work Completed.

Corporate

During the quarter Terry Topping resigned as Executive Director.

During the quarter Shane Sikora was appointed Managing Director.

Shane Sikora
Managing Director

- ENDS -

For further information visit rumbleresources.com.au or contact enquiries@rumbleresources.com.au.

About Rumble Resources Ltd

Rumble Resources Ltd is an Australian based exploration company, officially admitted to the ASX on the 1st July 2011. Rumble was established with the aim of adding significant value to its current gold and base metal assets and will continue to look at mineral acquisition opportunities both in Australia and abroad.

Competent Persons Statement

The information in this report that relates to Exploration Results is based on information compiled by Mr Andrew Rust, who is a Member of the Australasian Institute of Mining & Metallurgy. Mr Rust is employed by Shearwater Australia Pty. Ltd. who is a consultant to Rumble Resources Limited and has sufficient experience relevant to the style of mineralisation and type of deposit under consideration and to the activity which he is undertaking to qualify as a Competent Person as defined in the 2012 Edition of the "Australasian Code for Reporting of Exploration Results, Mineral Resources and Ore Reserves". Mr Rust consents to the inclusion in the report of the matters based on his information in the form and context in which it appears.



Appendix

In accordance with Listing Rule 5.3.3. Rumble provides the following information in relation to its mining tenements.

1. The mining tenements held at the end of the quarter and their location.

Project	Tenement Number	Status	Location	Beneficial Percentage Interest
Beadell	E45/2405	Granted	Western Australia	80%
Beadell	E45/4267	Granted	Western Australia	100%
Beadell	E45/4223	Granted	Western Australia	100%
Beadell	E45/4186	Granted	Western Australia	90%
Beadell	E45/4494	Application	Western Australia	100%
Canegrass	E29/783	Granted	Western Australia	90%
Big Red	E28/2268	Granted	Western Australia	100%
Big Red	E69/3190	Granted	Western Australia	100%
Big Red	E29/2536	Application	Western Australia	100%
Big Red	E29/2537	Application	Western Australia	100%
Big Red	E28/2547	Application	Western Australia	100%
Zanthus	E69/2506	Granted	Western Australia	20% <small>Note 1</small>
Zanthus	E28/2540	Application	Western Australia	100%
Zanthus	E 28/2542	Application	Western Australia	100%
Thunderstorm	E28/2322	Granted	Western Australia	100%
Thunderstorm	E28/2527	Application	Western Australia	100%
Thunderstorm	E28/2528	Application	Western Australia	100%
Thunderstorm	E28/2529	Application	Western Australia	100%
Thunderstorm	E28/2523	Granted	Western Australia	100%
Thunderdome	E28/2366	Granted	Western Australia	100%
Sidewinder	E58/484	Application	Western Australia	100%
Sidewinder	E59/2119	Application	Western Australia	100%
Sidewinder	E59/491	Application	Western Australia	100%
Derosa	Bompela	Granted	Burkina Faso	85% <small>Note 2</small>
Derosa	Sapala	Granted	Burkina Faso	85% <small>Note 2</small>
Burkina Faso	Nanemi	Granted	Burkina Faso	100%
Burkina Faso	Pogoro	Granted	Burkina Faso	100%
Burkina Faso	Yalore	Granted	Burkina Faso	100%



2. Mining tenements acquired during the quarter and their location:

No new mining licences were applied for or acquired during the September Quarter.

3. Mining tenements disposed of during the quarter and their location:

Project	Tenement Number	Status	Location	Comment
Thunderstorm	E28/2471	Application	Western Australia	Relinquished
Thunderstorm	E28/2472	Application	Western Australia	Relinquished
Thunderstorm	E28/2382	Application	Western Australia	Relinquished
Burkina Faso	Villibongo	Granted	Burkina Faso	Relinquished

1. Zanthus Project, Western Australia

E69/2506 is subject to a Joint Venture agreement with Blackham Resources Ltd whereby Rumble can earn up to a 75% interest in the licence.

2. Derosa Project, Burkina Faso

Bompela and Sapala are subject to a Joint Venture agreement with Canyon Resources limited whereby Rumble owns 85% interest and Canyon a 15% interest.