



ASX Code: MRP

Contact Details

PO Box 10977
109 Maritana Street
Kalgoorlie WA 6430

T +61 (0) 8 9068 1300
F +61 (0) 8 9068 1310
E info@mrpresources.com.au

ABN 98 139 357 967

**Board of Directors &
Senior Management**

Ashok Parekh
Non-Executive Chairman

Jeff Williams
Non-Executive Director

Peter Rozenauers
Non-Executive Director

Brendan James
Chief Executive Officer

Ashok Parekh changes to Non-Executive Role

MacPhersons Resources (ASX: MRP) advise that Ashok Parekh has stepped down from his role as Executive Chairman of the Company and will continue as Chairman of MacPhersons in a non-executive capacity. In his role as Executive Chairman, Ashok has played a critical role in progressing the Company's projects and was the driving force for the Company's listing on ASX in 2010. Ashok now sees the Company entering a new phase and feels it is the appropriate time to relinquish responsibilities to experienced mining executives Brendan James and Andrew Pumphrey.

In conjunction with the change in role Mr Parekh's director fees will now be \$52,000 per annum, plus statutory superannuation. The total director fees paid by the Company is now \$87,000 per annum, plus statutory superannuation where applicable, and in line with industry trends.

Brendan James
Chief Executive Officer
6 November 2015

For more information on MacPhersons Resources Limited and to subscribe for regular updates, please visit our website at: www.mrpresources.com.au or contact our Kalgoorlie office on info@mrpresources.com.au or 08-9068-1300.

About MacPhersons

MacPhersons Resources Ltd (MRP) is a Western Australian resource company with a number of advanced gold, silver and zinc projects.

The company's long term objective is the development of its existing assets and unlocking the full potential of its 100% owned highly prospective Boorara/Nimbus and Coolgardie projects.

For more information on MacPhersons Resources Limited and to subscribe for regular updates, please visit our website at: www.mrpresources.com.au or contact our Kalgoorlie office on info@mrpresources.com.au or 08 90681300.

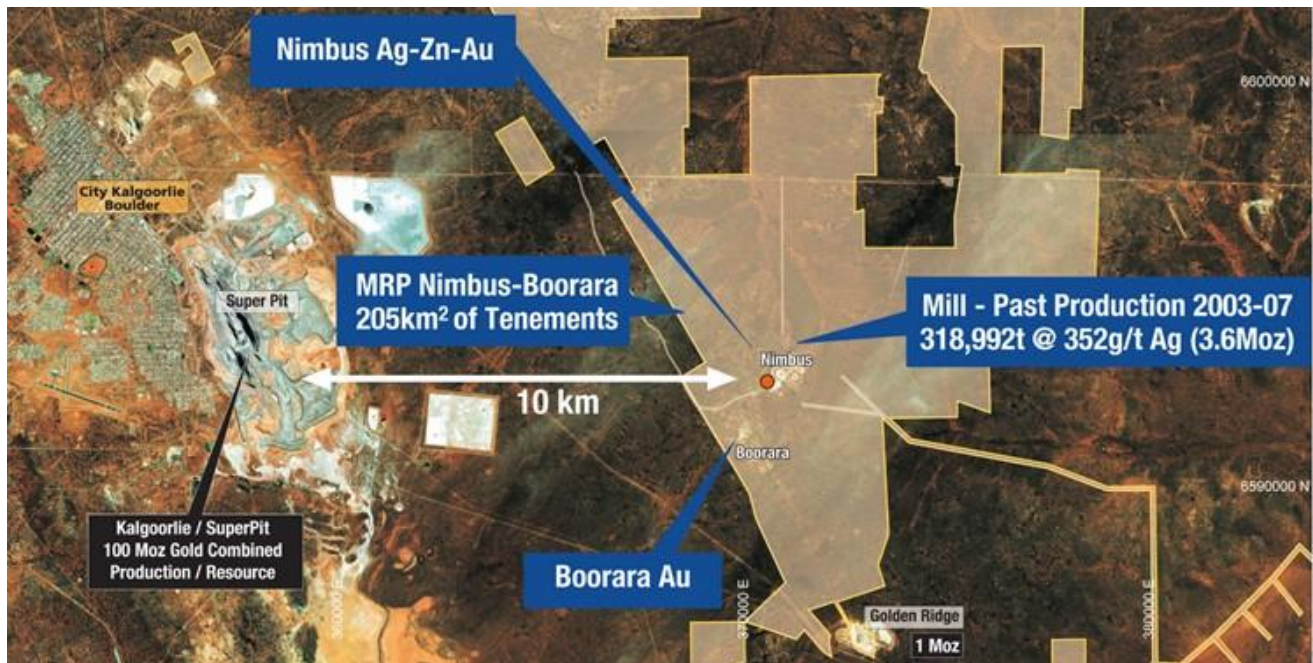


Figure 1: Location of the Nimbus-Boorara projects area, 10km east of the Kalgoorlie Super Pit, showing the Nimbus Mill site and the Boorara gold project within 1km of the Nimbus mine.