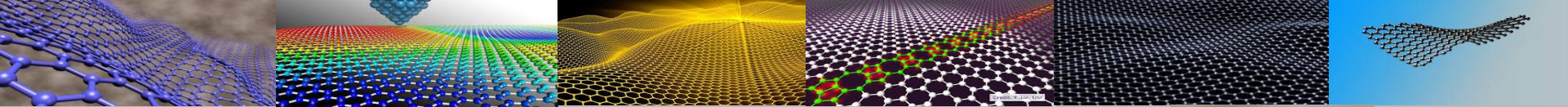


Fast-tracking the Lindi Jumbo Flake Graphite Project

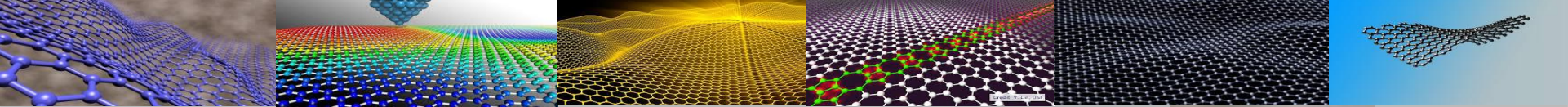




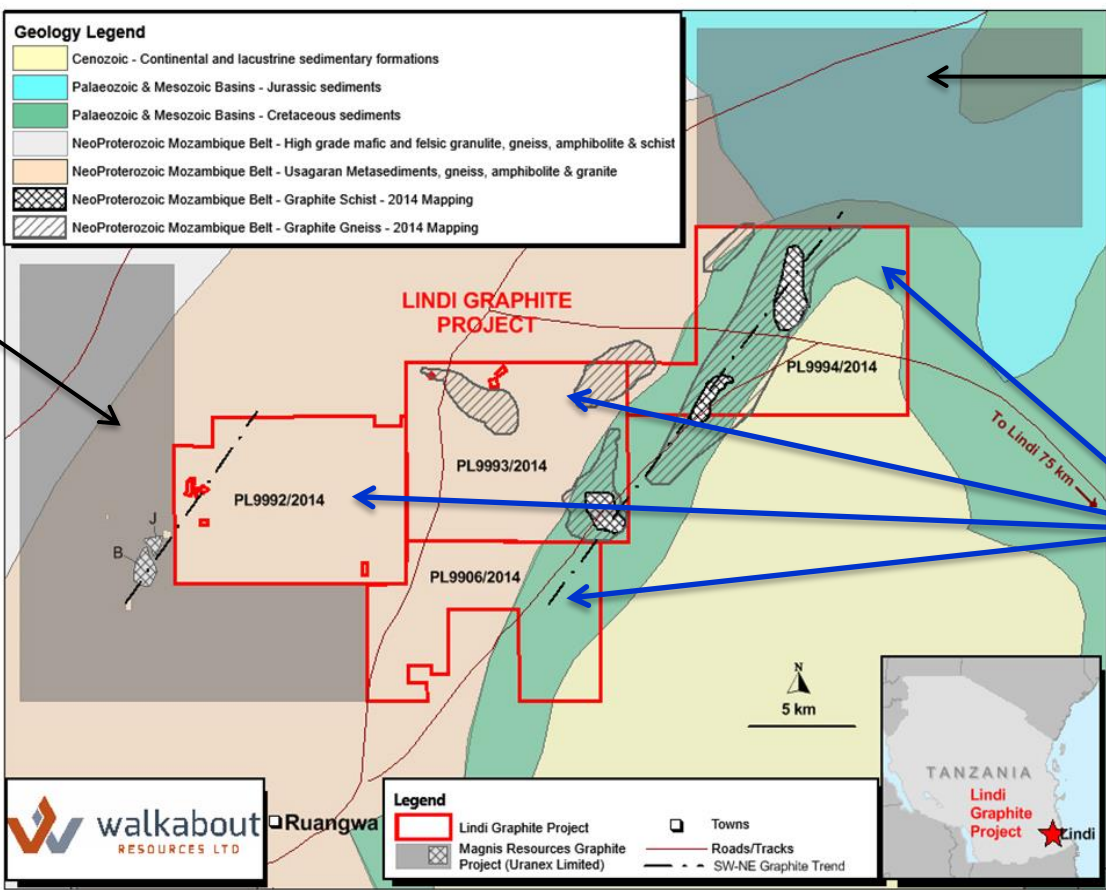
Lindi Jumbo Project: Project Brief



- Lindi Jumbo Graphite Project is adjacent to Magnis Resources' Nachu Project
- Maiden drilling has been undertaken on several high intensity VTEM targets
- Multiple wide, shallow and massive graphite intersections were located
- Assay results pending – 1st 5 holes received with up to **8m@22.7%** TGC
- Metallurgical characterisation testwork results pending
- Maiden resource modelling and calculation underway
- Project is to be fast-tracked to develop;
 - First phase +25,000 tpa, large and jumbo flake graphite mining operation
 - Low capex, early cash flow model being pursued
 - Offtake partner being sought to share in development and mitigate market risk
 - Production can be achieved in CYR2017



Lindi Jumbo Project Location

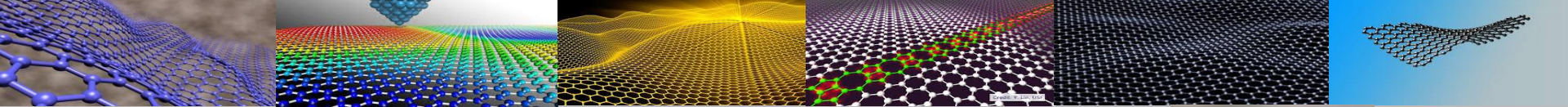


Nachu Graphite Project held by Magnis Resources Limited

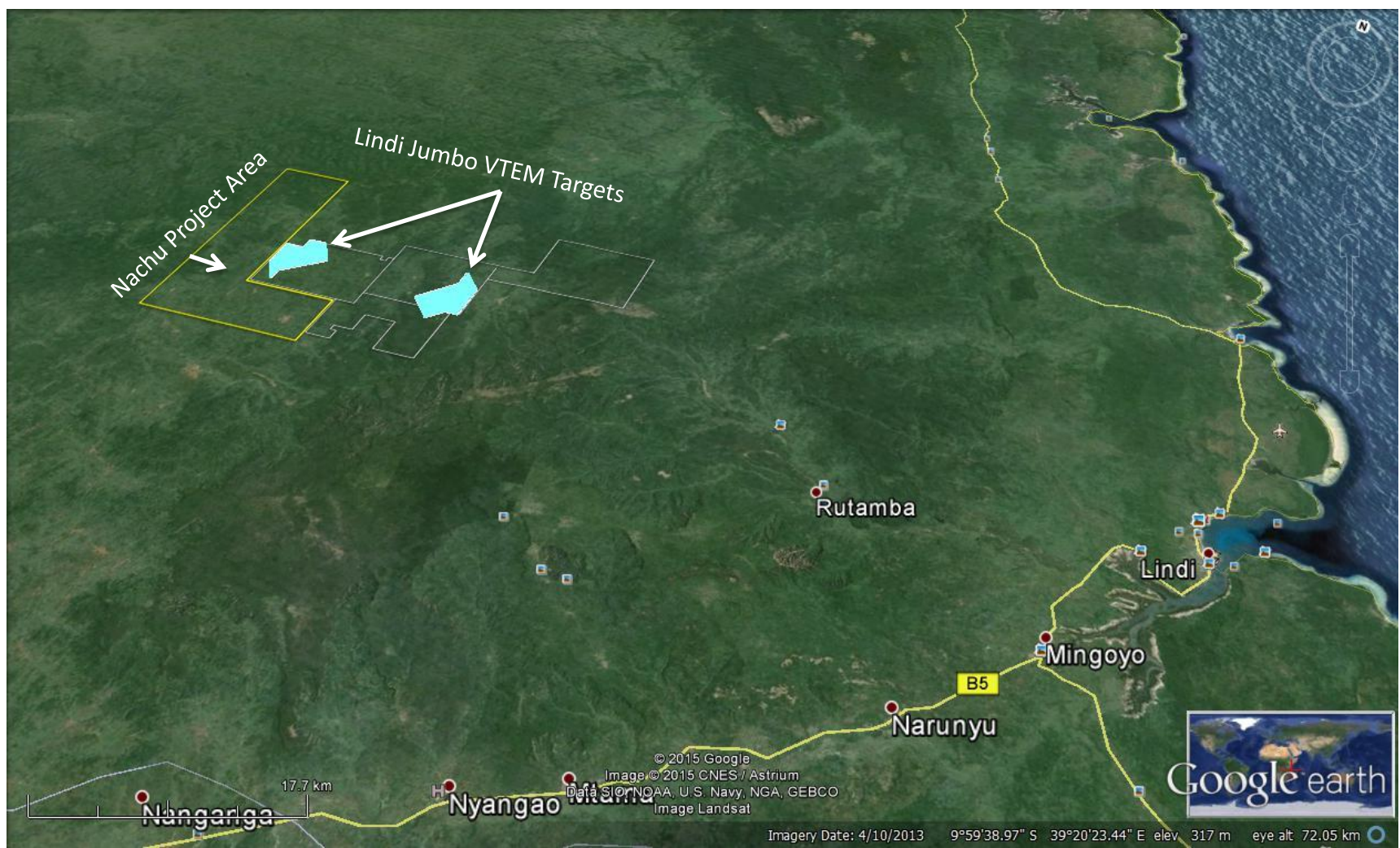
Ruangwa Graphite Project held by Magnis

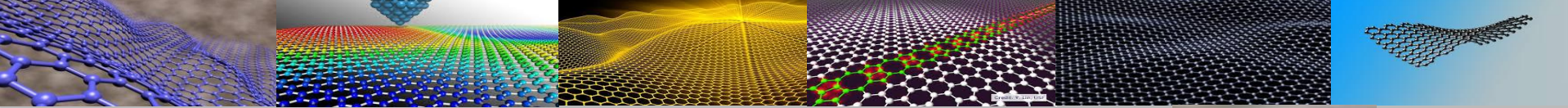
Lindi Jumbo Project 70% held by Walkabout





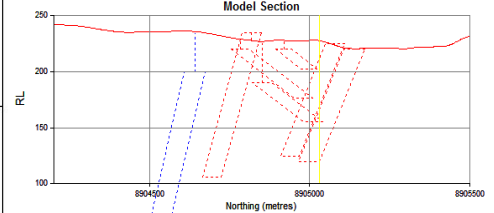
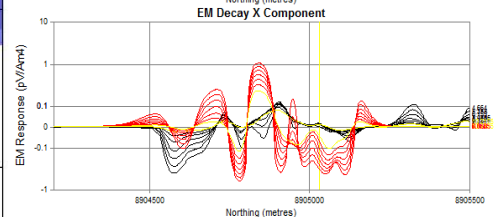
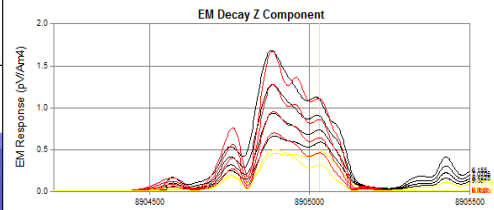
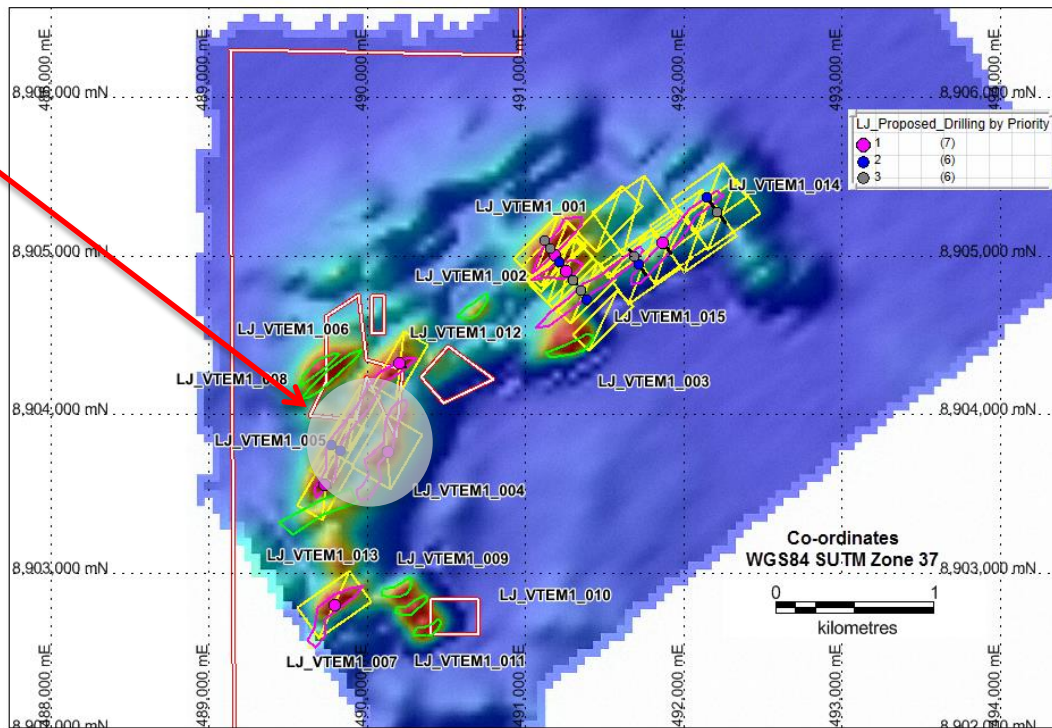
Lindi Jumbo Airborne VTEM Location

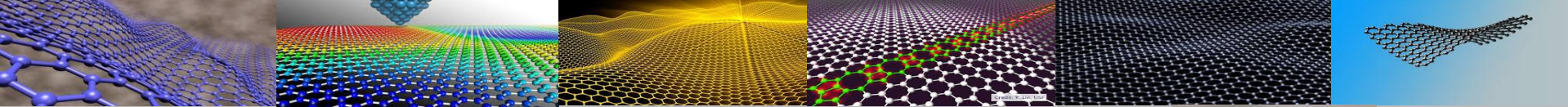




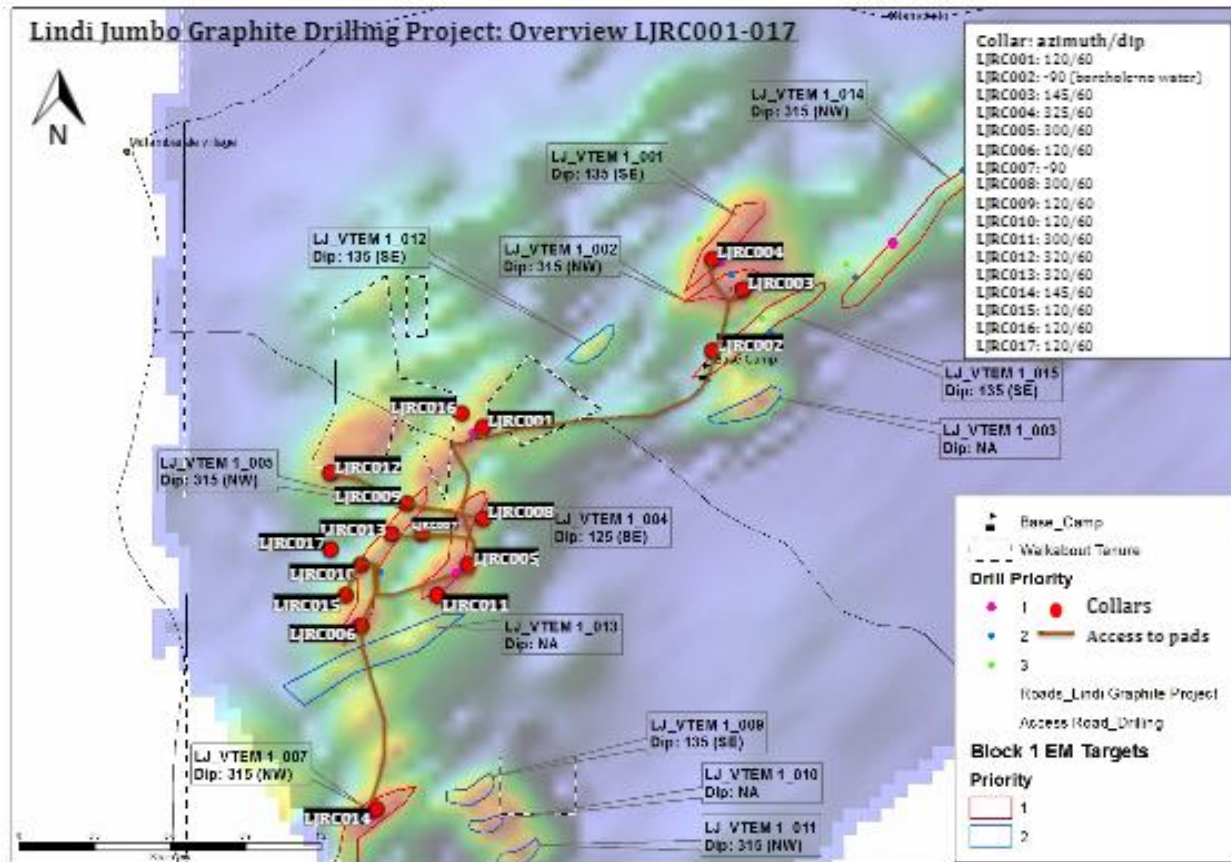
Lindi Jumbo Airborne VTEM

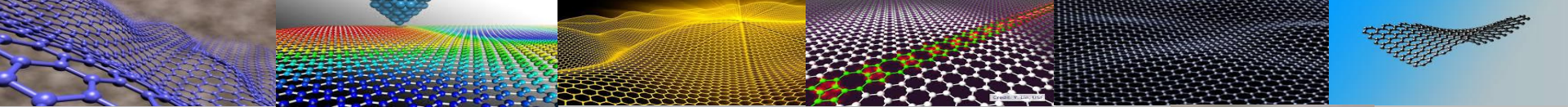
The Gilbert Arc anti-form structure



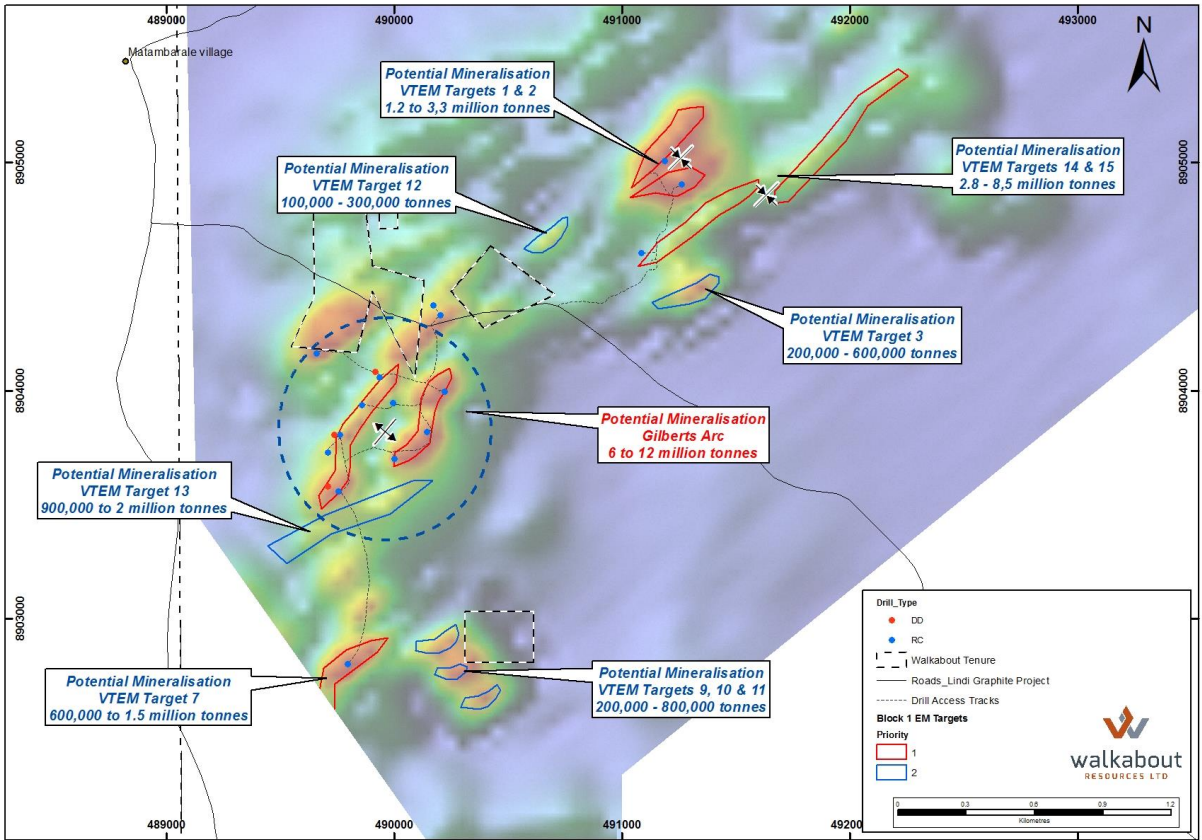


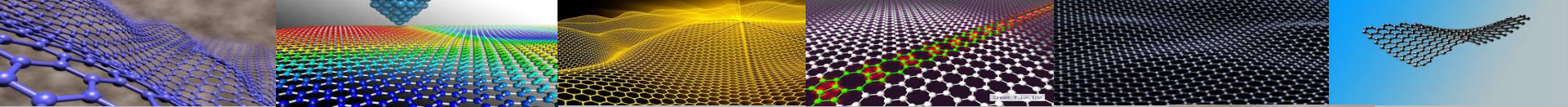
Lindi Jumbo Project: Drilling





Lindi Jumbo Project: Resource Targets



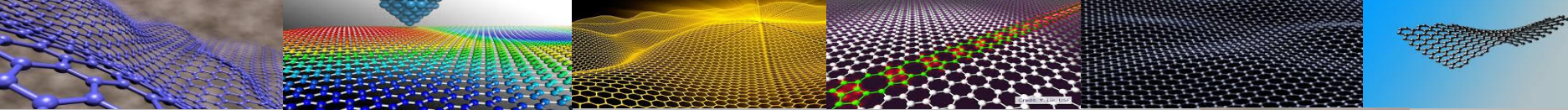


Lindi Jumbo Project: Drill Logs

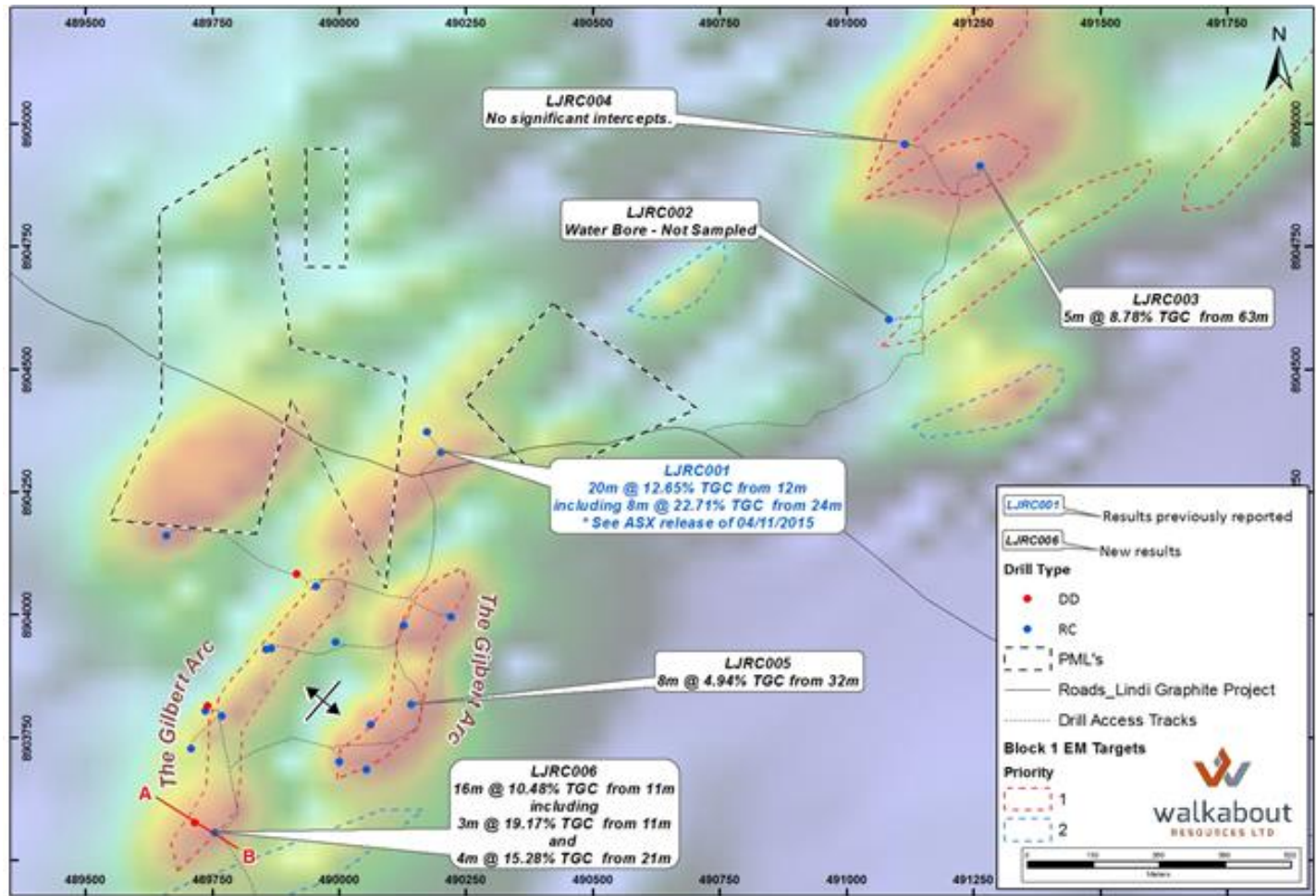
Lindi Jumbo Graphite Project - Drill Hole Detail

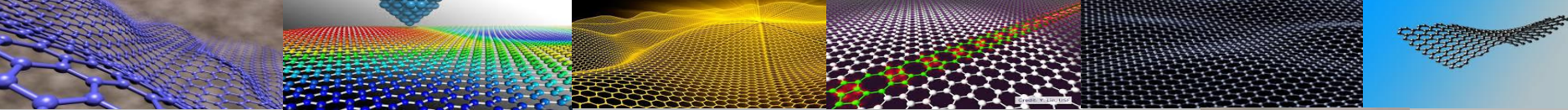
Hole Number	East	North	Dip/Azi	Elevation (RL's)	Current Depth	Graphite From	Total Graphite Intersected	Thickest Graphite Intersection	Massive Graphite Intersection	Comment
	m	m	deg	m	m	m	m	m	m	Down-hole measurements
RC Drill Holes										
LJRC001	490200	8904331	60/120	243	59	13	34	19	8	Massive graphite from 24 to 32m
LJRC002	491083	8904602	-90	234	68	NA	0	0	0	Off trend - Water hole
LJRC003	491259	8904904	60/145	226	66	28	8	7	0	Graphitic schist and biotite from 28m
LJRC004	491185	8905007	60/325	230	102	17	26	8	0	Graphitic schist and biotite from 17m
LJRC005	490141	8903818	60/300	228	70	8	21	8	0	Graphitic schist and gneiss from 8m
LJRC006	489754	8903556	60/120	230	67	11	30	21	28	Massive graphite with visible flakes from 11-32m and 34-41m
LJRC007	489992	8903944	-90	232	40	19	2	2	0	Off trend - Sporadic graphitic dolomite
LJRC008	490220	8903996	60/300	229	41	9	11	9	2	Massive graphite from 9-11m and graphitic schist and gneiss
LJRC009	489935	8904056	60/120	228	55	1	49	36	42	Massive graphite with visible flakes from 3-9m and 17-53m
LJRC010	489762	8903806	60/120	214	61	7	49	36	46	Massive graphite with visible flakes from 7-23m and 29-61m
LJRC011	489999	8903701	60/300	227	41	5	34	34	2	Massive graphite from 9-11m then graphitic schist and gneiss
LJRC012	489658	8904161	60/320	221	40	3	33	33	1	Massive graphite from 3-4m then graphitic schist to 36m
LJRC013	489858	8903935	60/320	218	70	3	56	36	0	Graphitic schist from 3-39m then 42-53m and 57-69m
LJRC014	489795	8902800	60/145	234	65	3	34	34	1	1m Massive graphite from 3m then graphitic schist
LJRC015	489707	8903728	60/120	223	67	13	46	30	46	All intersections massive graphite with visible flakes
LJRC016	490172	8904373	60/120	230	51	3	17	12	12	12m of massive graphite from 30m with visible flakes
LJRC017	489736	8903805	60/120	224	98	15	75	47	18	Massive graphite with visible flakes from 15-33m and from 49m to EOH
LJRC018	490062	8903776	60/300	224	40	6	23	19	0	Graphitic schist from 6-25m with visible flakes
LJRC019	490053	8903685	60/300	224	61	9	42	34	5	Massive graphite from 10-15m with visible flakes
LJRC020	490126	8903978	60/300	252	40	3	28	19	4	Massive graphite from 15-19m with visible flakes
LJRC021	489865	8903932	60/120	228	54	1	46	31	33	Massive graphite from 18-22 and 23-EOH (54m)
Diamond Drill Holes										
LJDD001	489736	8903805	60/120	213	70	14	46	22	32	Massive graphite with visible flake from 23-33 & 48-70m & further than EOH
LJDD002	489709	8903578	60/120	224	69	2	53	51	26	Massive graphite with visible flakes from 36-56m and 59-65m
LJDD003	489916	8904083	60/120	227	76	1	67	54	48	Massive graphite with visible flakes from 2-4m, 5-10 and 31-72m

Peach coloured shading represents holes drilled within the Gilbert Arc target area



Lindi Jumbo Project: First Drill Assays Outstanding



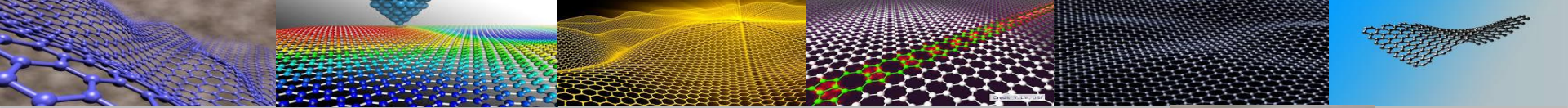


Lindi Jumbo Project: Mineable Grade Potential

Hole	From (m)	To (m)	Width (m)	Lithology	Total Graphitic Carbon TGC%	Notable Intersections TGC%	Notable Intersections 2 TGC%
LJRC001	12	13	1	Graphite Schist	5.50	20m @ 12.65	4m @ 11.16 including 2m @ 16.85
	13	14	1	Graphite Schist	5.44		
	14	15	1	Graphite Schist	13.90		
	15	16	1	Graphite Schist	19.80		
	16	17	1	Graphite Schist	1.92		
	17	18	1	Graphite Schist	1.32		
	18	19	1	Graphite Biotite Gneiss	17.00		1 m @ 17
	19	20	1	Graphite Biotite Gneiss	2.84		
	20	21	1	Graphite Biotite Gneiss	2.40		
	21	22	1	Graphite Biotite Gneiss	0.13		
	22	23	1	Graphite Biotite Gneiss	0.07		
	23	24	1	Graphite Biotite Gneiss	0.92		
	24	25	1	Graphite Biotite Gneiss	13.10		
	25	26	1	Graphite Biotite Gneiss	31.90		
	26	27	1	Graphite Biotite Gneiss	21.30		8m @ 22.71
	27	28	1	Graphite Biotite Gneiss	15.10		
28	29	1	Graphite Biotite Gneiss	25.40			
29	30	1	Graphite Biotite Gneiss	25.20			
30	31	1	Graphite Biotite Gneiss	25.20			
31	32	1	Graphite Biotite Gneiss	24.50			
				Not sampled			10m Break
	41	42	1	Graphite Biotite Schist	7.88	15m @ 4.72	9m @ 6.03 including 3m @ 7.45
	42	43	1	Graphite Biotite Schist	7.21		
	43	44	1	Graphite Biotite Schist	7.25		
	44	45	1	Graphite Biotite Schist	5.37		
	45	46	1	Graphite Biotite Schist	4.70		
	46	47	1	Graphite Biotite Schist	5.17		
	47	48	1	Graphite Biotite Schist	4.62		
	48	49	1	Graphite Biotite Schist	6.39		
	49	50	1	Graphite Biotite Schist	5.72		
	50	51	1	Graphite Biotite Schist	2.87		
	51	52	1	Graphite Biotite Schist	0.40		
	52	53	1	Graphite Biotite Schist	3.37		
	53	54	1	Graphite Biotite Schist	4.74		
	54	55	1	Graphite Biotite Schist	4.55		
	55	56	1	Graphite Biotite Schist	0.60		

Coded Colours

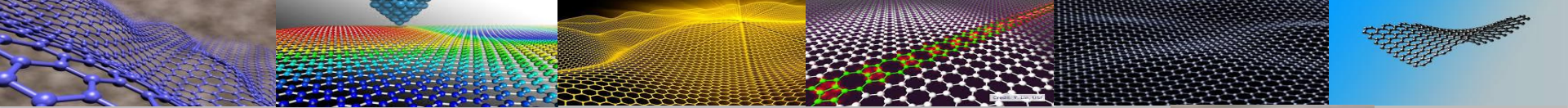
TGC % Range	Color
0 to 4.9	[Lightest Grey]
5 to 9.9	[Light Grey]
10 to 19.9	[Medium Grey]
>20	[Darkest Grey]



Lindi Jumbo Project: Massive Graphite

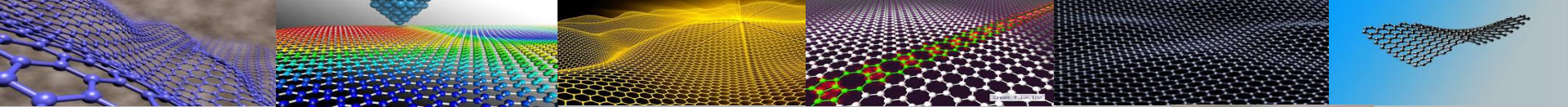


Spectacular quality jumbo flake graphite at outcrop at Lindi Graphite

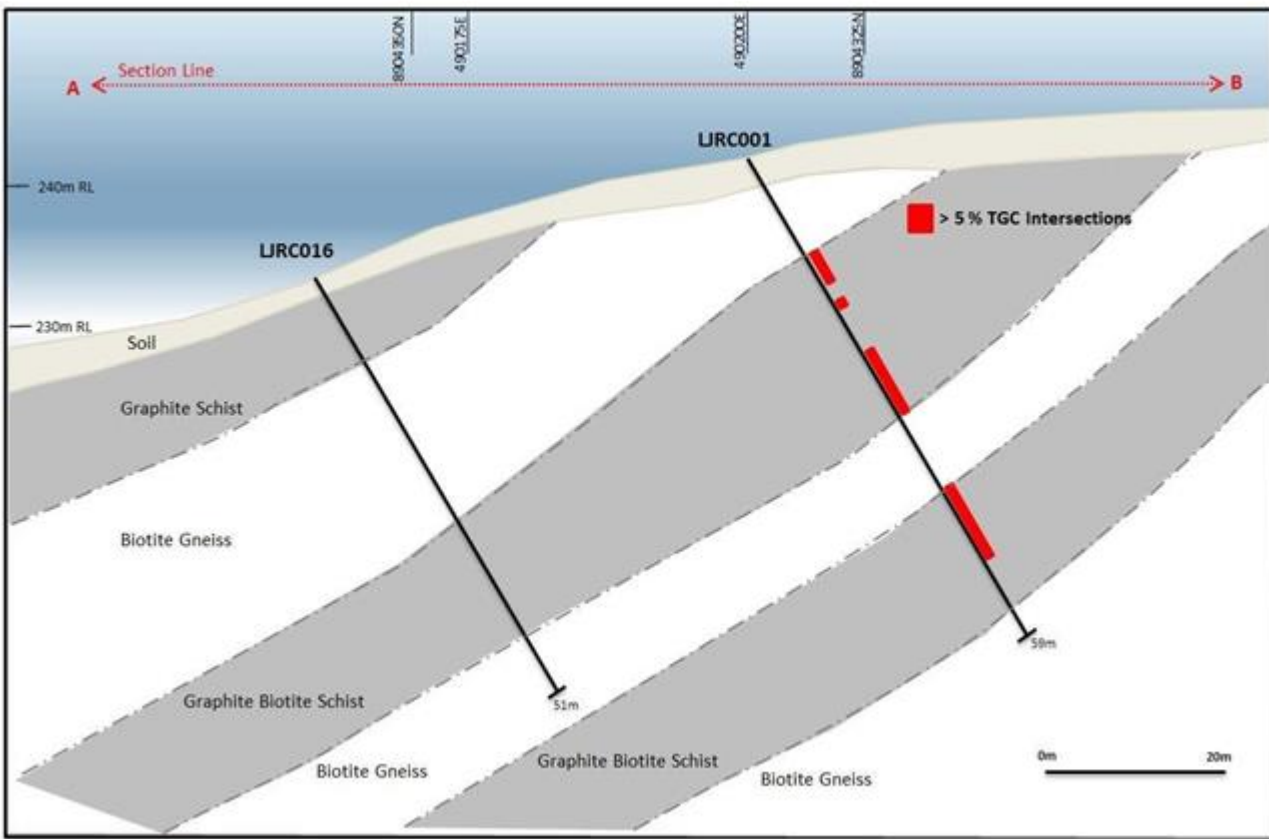


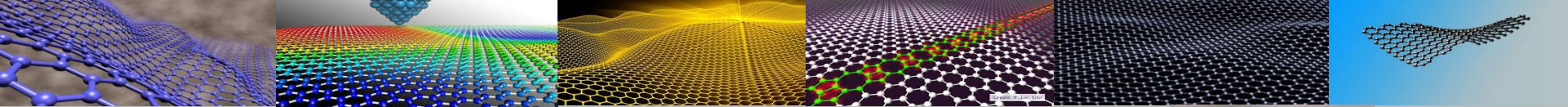
Lindi Jumbo Project: Massive Graphite



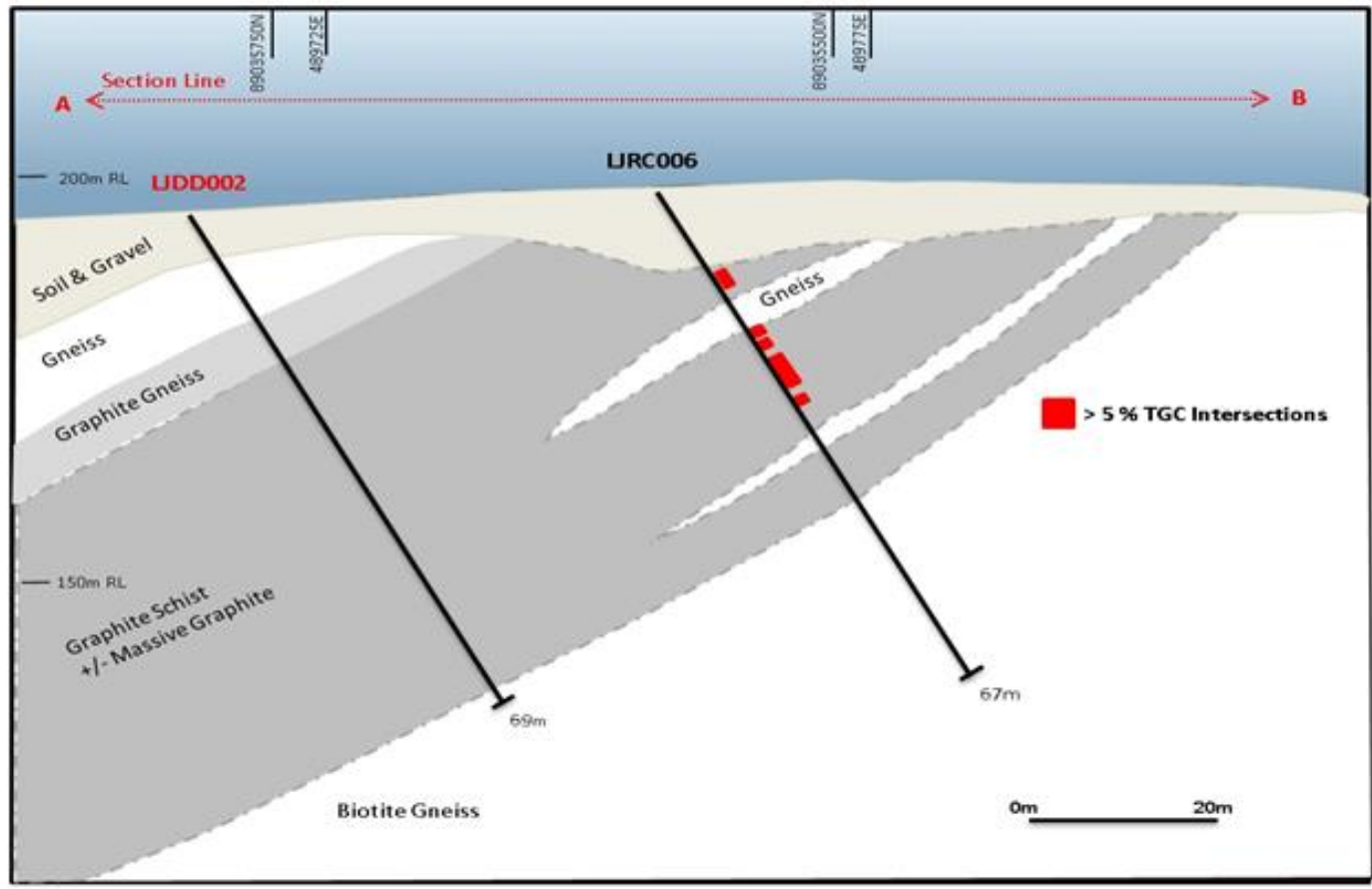


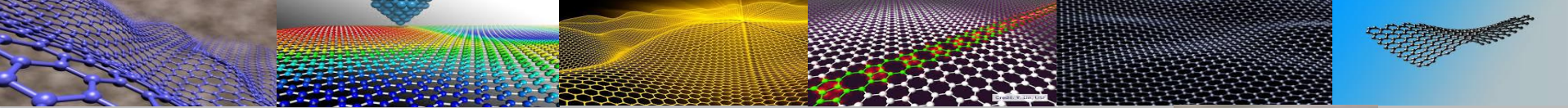
Lindi Jumbo Project: Open Cut Simple Mining





Lindi Jumbo Project: Open Cut Simple Mining



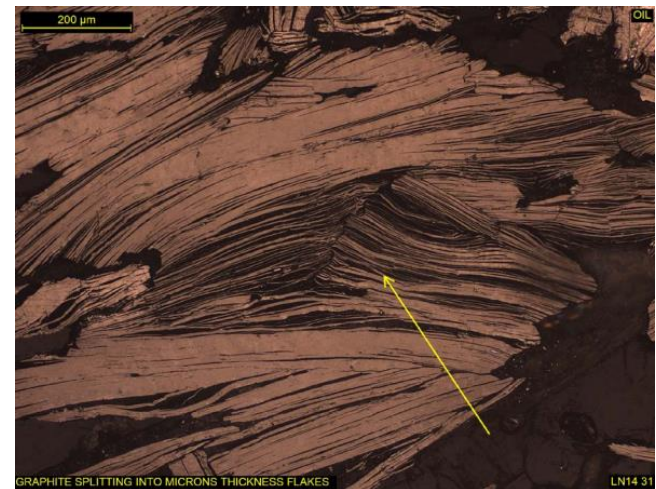


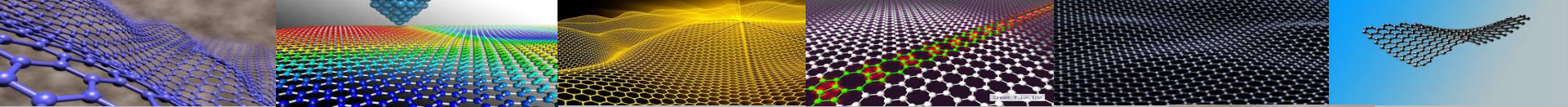
Lindi Jumbo Upside - Petrography

Graphite content across the chip is **very high**, occurring primarily within the graphite/quartz bands in aggregates of aligned flakes, and as minor/sporadic constituent within the amorphous silica bands as discrete flakes.

Graphites are commonly lath shaped flakes (elongate and relatively thin), occasionally prismatic – lengths ranging from $\sim 60 \mu\text{m}$ to $\sim 2.6 \text{ mm}$ (**the majority between $\sim 300 \mu\text{m}$ and $\sim 1 \text{ mm}$**), breadths ranging from ~ 5 to $\sim 400 \mu\text{m}$ (the majority between ~ 30 and $\sim 120 \mu\text{m}$).

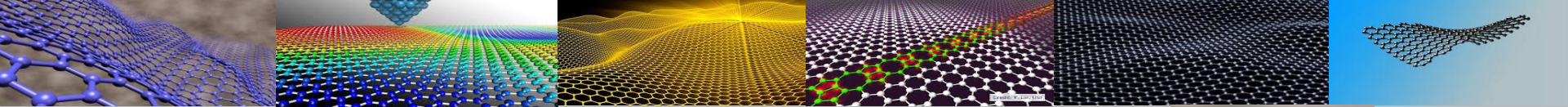
However, many of these graphite flakes across the sample, are splitting into individual flakes of **micron sized thickness**, with what appears to be kaolinite (XRD) and amorphous silica 2 (SEM) found interstitial to these split flakes. The texture appears analogous to a **book with discrete separate pages**.



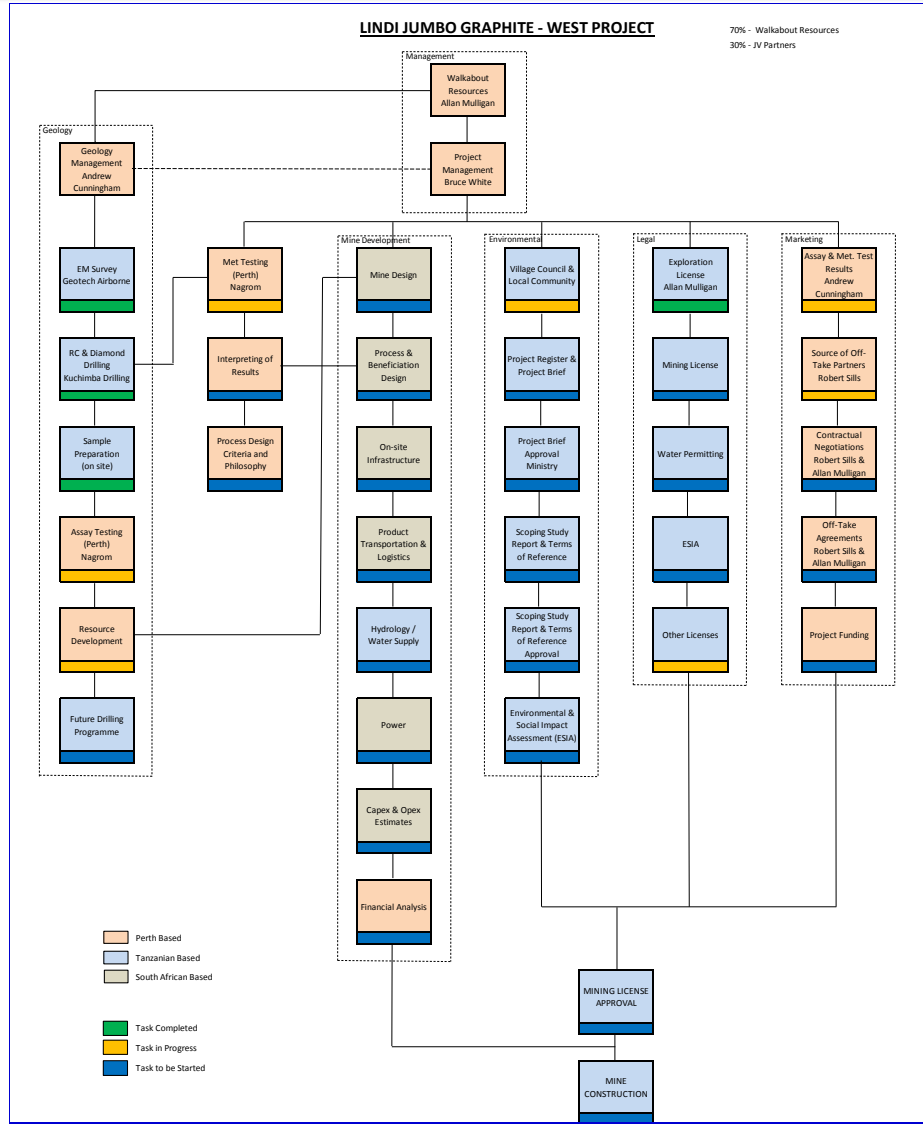


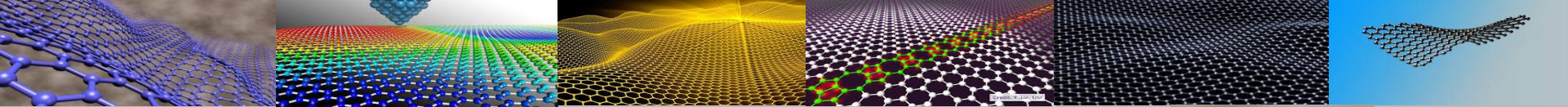
Lindi Jumbo Project – Initial Design Testwork Underway





Lindi Jumbo Project – Project Structure





Corporate Overview 04/11/2015



Commercial Snapshot:

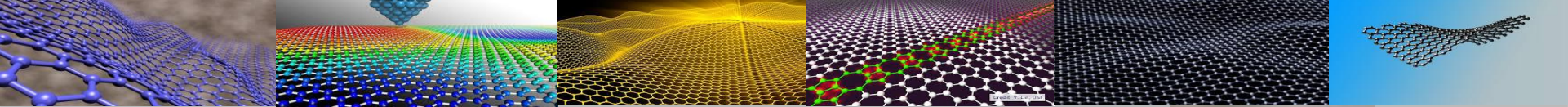
- 1.34bn shares on issue
- No Options

WKT Response to the new paradigm:

- Direct marketing is much more important
- Low overheads – short term contractors (Aquarius Model)
- Low capex – early cashflow
- Reduce or remove burden on shareholders as early as possible

Technical Competence

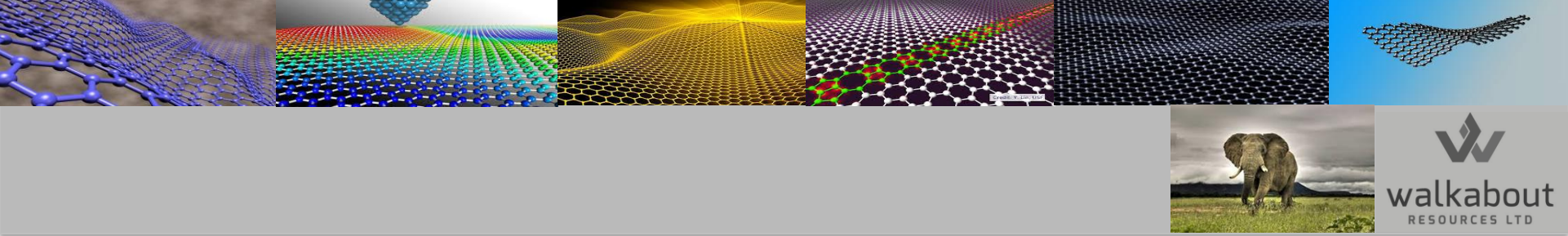
- Andrew Cunningham – Geology
- Robert Sills – Off Take Marketing
- Tom Murrell – Investor Relations
- Allan Mulligan – Mining Engineer and Study
- Geoff Wallace – Compliance and Governance



Compelling Investment Case



- Known graphite **right next to** Magnis' Nachu Project valued at +\$122m undiluted
- Grade likely to be **substantially higher** – lower input costs
- Highly likely and early results **confirm** that the Jumbo flake ratios will be similar to Nachu
- Work conducted with other graphite projects has **mapped out** what WKT needs to do to enable a fast track
- WKT will apply for Mining Licence not Special Mining Licence – substantially easier and quicker
- Resource definition to commence on **only 1,400m** of drilling which triggers study and design phases
- Once the deposit is confirmed, **negotiate** with Development Partner and move to bespoke resource drilling program, environmental and permitting
- Volume and Liquidity are **up 5 fold** in 6 months since announcing the Lindi Jumbo JV
- Market Cap up 15 times and share price up 9 times since April/May 2015



Forward-Looking Statements

This presentation includes certain “Forward-Looking Statements.” All statements, other than statements of historical fact, included herein, including without limitation, statements regarding forecast cash flows and potential mineralisation, resources and reserves, exploration results and future expansion plans and development objectives of Walkabout Resources Limited are forward-looking statements that involve various risks and uncertainties. There can be no assurance that such statements will prove to be accurate and actual results and future events could differ materially from those anticipated in such statements.

The modelling and price predictions used are sourced on open-file. All information used regarding peer forecasts make use of publically available information.

www.wkt.com.au

+61 6298 7500

Level 3, 681 Murray Street

West Perth WA 6005