

# ACTIVE AFRICAN EXPLORER



**RIFT VALLEY  
RESOURCES LIMITED**

## ANGOLA

LONGONJO- REE

CATABOLA – IOCG

➤ CASSENHA HILL- COPPER GOLD

➤ CAMBUMBULA –COPPER GOLD

BONGO -GOLD

## TANZANIA

MIYABI - GOLD

KITONGO -GOLD

**NOVEMBER 2015**

# DISCLAIMER

---

- This presentation has been prepared by Rift Valley Resources Ltd (“Company”). The presentation does not contain all the information that a prospective investor may require about the companies, their business or the proposal. It is not a complete statement of material information. Except where stated, the information disclosed in this presentation (“Information”) relates to the proposed business of the Company at the date of this document. This presentation does not contain advice relating to legal, taxation or investment matters. Each Company makes no representation or warranty (express or implied) as to the accuracy, reliability or completeness of the Information. Each Company and its subsidiaries, directors, employees, agents and consultants shall have no liability (including liability to any person by reason of negligence or negligent misstatement) for any statements, opinions, information or matters (express or implied) arising out of, contained in or derived from, or for any omissions from this presentation, except liability under statute that cannot be excluded.
- This presentation may contain reference to certain intentions, expectations and plans of a Company (“forward looking statements”). Those intentions, expectations and plans may or may not be achieved. Any forward looking statements are subject to inherent risks and uncertainties and are based on certain assumptions that may not be met or on which views may differ. The performance and operations of a Company may be influenced by a number of factors, many of which are outside the control of the Company. Actual future results may be materially different. No representation or warranty, express or implied, is made by either Company or any of its directors, officers, employees, advisers or agents that any intentions, expectations or plans will be achieved either totally or partially or that any particular rate of return will be achieved. You are cautioned against relying upon any forward looking statement in this document.
- This presentation does not contain an offer of securities in a Company, nor an invitation to apply for such securities. Nothing in this document should be construed as investment advice or financial product advice, whether personal or general, for the purposes of Section 766B of the Corporations Act. The document does not involve or imply a recommendation or a statement of opinion in respect of whether to buy, sell or hold a financial product. You should obtain professional advice and carry out your own independent investigations and assessment of the Information before acting.
- Information in this presentation which is attributed to a named third party source has not been checked or verified by the Company. This presentation remains the property of Rift Valley Resources Ltd and may not be reproduced, distributed, transmitted or published (in whole or in part) without the prior consent of the Company.
- We advise in accordance with Australian Stock Exchange Limited Listing Rules 5(6) that the exploration results for the Ozango Project contained within this ASX Release is based on information compiled by Mr Greg Cunnold who is a member of the Australian Institute of Mining and Metallurgy. Mr Cunnold is a director and shareholder of Rift Valley Resources Ltd and has consented in writing to the inclusion in this ASX Release of matter based on the information so compiled by him in the form and context in which it appears. Mr Cunnold has sufficient experience relevant to the style of mineralisation and type of deposit under consideration to be qualified as a Competent Person as defined by the 2012 Edition of the “Australian Code for reporting of Exploration Results, Mineral Resources and Ore Reserves”.
- The information in this report that relates the Exploration Results and Mineral Resources for the Kitongo and Miyabi gold deposits is based on information compiled by Mr Paul Payne, a full time employee of Payne Geological Services and a Member of The Australasian Institute of Mining and Metallurgy. Mr Payne is a consultant to and a shareholder of Rift Valley Resources and has sufficient experience which is relevant to the style of mineralisation and type of deposit under consideration and to the activity which he is undertaking to qualify as a Competent Person as defined in the 2012 Edition of the Australasian Code for Reporting of Exploration Results, Mineral Resources and Ore Reserves. Mr Payne consents to the inclusion in the report of the matters based on his information in the form and context in which it appears.
- All information relating to Mineral Resources was prepared and disclosed under the JORC Code 2004. It has not been updated since to comply with the JORC Code 2012 on the basis that the information has not materially changed since it was last updated





# COMPANY INFORMATION

---

• ASX Code	RVY.AU
• Share Price	\$0.02
• Shares on Issue	531m
• Options (27/7/18) ex 6c	45m
• Market Cap @ \$0.02	\$12.2m
• Top 20	40%
• Top 100	72%
• Directors & Management	15%
• Cash	\$2.0m

## Directors

- **Mr Geoff Gilmour - Managing Director**  
Over 20 years of corporate experience. Instrumental in creation of Andean Resources Ltd (\$3.5bn takeover). Previous MD of Amex Resources Ltd and Brightstar Resources Ltd.
- **Mr Graeme Clatworthy B.Bus (Accounting)- Non-Executive Director**  
28 years experience in the Australian capital markets. Previously a director of several listed companies. Director of Meteoric Resources NL.
- **Mr Greg Cunnold BSc MAusIMM - Technical Director** Geologist with 20 years of experience in the international exploration industry. Greg was instrumental in the discovery of Gabriel Resources 14 million ounce gold resource in Romania. He also was exploration manager for Reward Minerals Ltd.

- **Mr Scott Mison – Company Secretary**  
B.Bus, CA, ACSA. Member of the Institute of Chartered Accountants. Director of Jupiter Energy Ltd and 1-Page Ltd.

## Consultants

- **Mr Paul Payne BAppSc, MAusIMM - Geologist**  
Paul provides geological management to Rift's Tanzanian operations. Paul has over 25 years experience in exploration and project development in technical and corporate roles.
- **Barry Bourne BSc (Hons) Geology**  
Barry has over 20 years of international exploration experience encompassing Africa, North and South America, Europe, Russia and Papua New Guinea. Until 2013 he was Chief Geophysicist for Barrick Gold's Global Exploration Group and now provides specialist consulting services to the global mineral exploration industry.



# PROJECTS OVERVIEW



## Tanzania

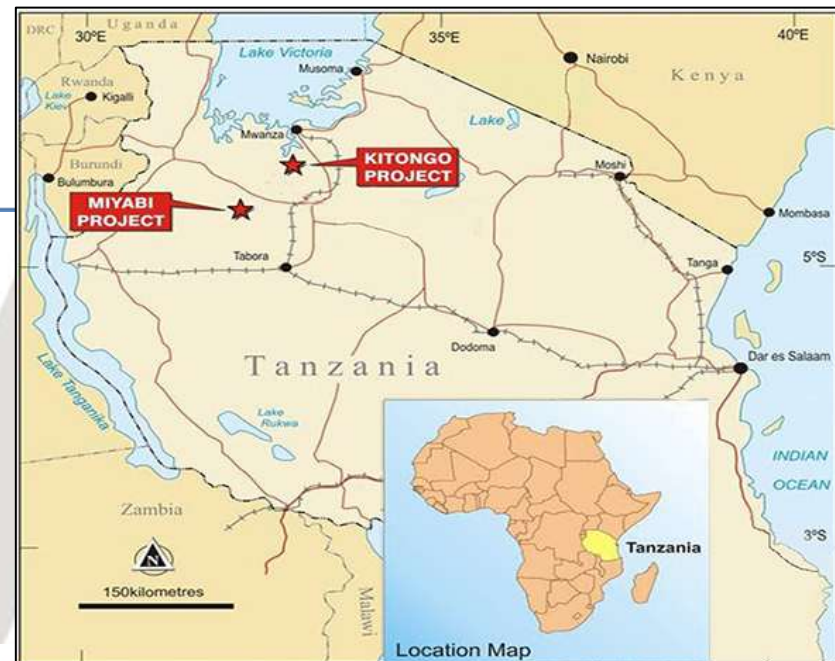
Two advanced gold projects situated in the  
Lake Victoria Goldfields

- **Miyabi Gold Project (RVY 100%)**
  - 704,000oz Resource, multiple deposits, new high grade discovery by RVY
- **Kitongo Gold Project (RVY 100%\*)**
  - 370,000oz JORC Resource\*, excellent results from 2014 RVY drilling

## Angola

3,670 km<sup>2</sup> holding in unexplored greenstone

- **Ozango Project (RVY 70%)**
  - Demonstrated prospectivity for
    - Gold – rock chips up to 6g/t Au
    - IOCG Copper-Gold
    - REE – drill defined mineralisation
  - 5 walk-up drill targets identified
  - Government funded regional aeromagnetic survey underway

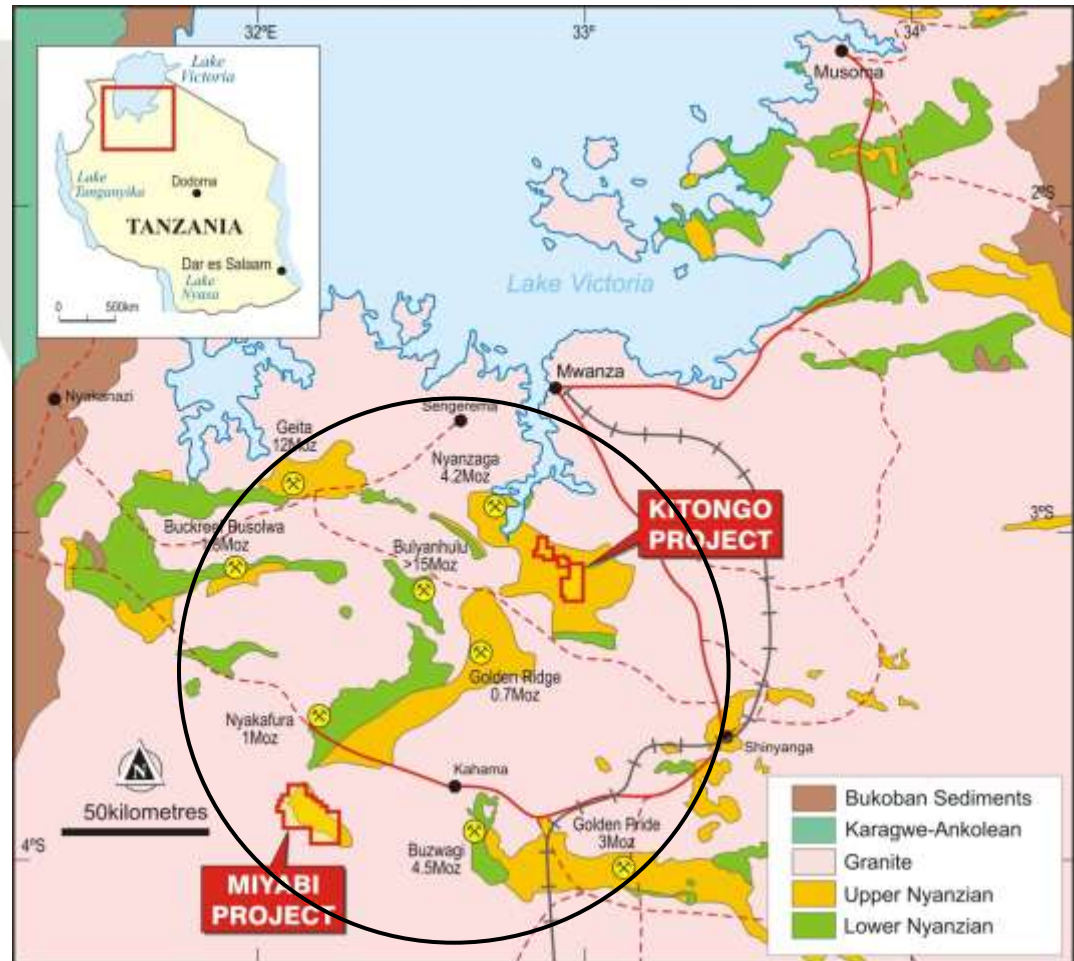


\* Kitongo resource lies within Primary Mining Licence allowing exploitation by local, small scale artisanal miners.



# TANZANIA – GEOLOGY & PROSPECTIVITY

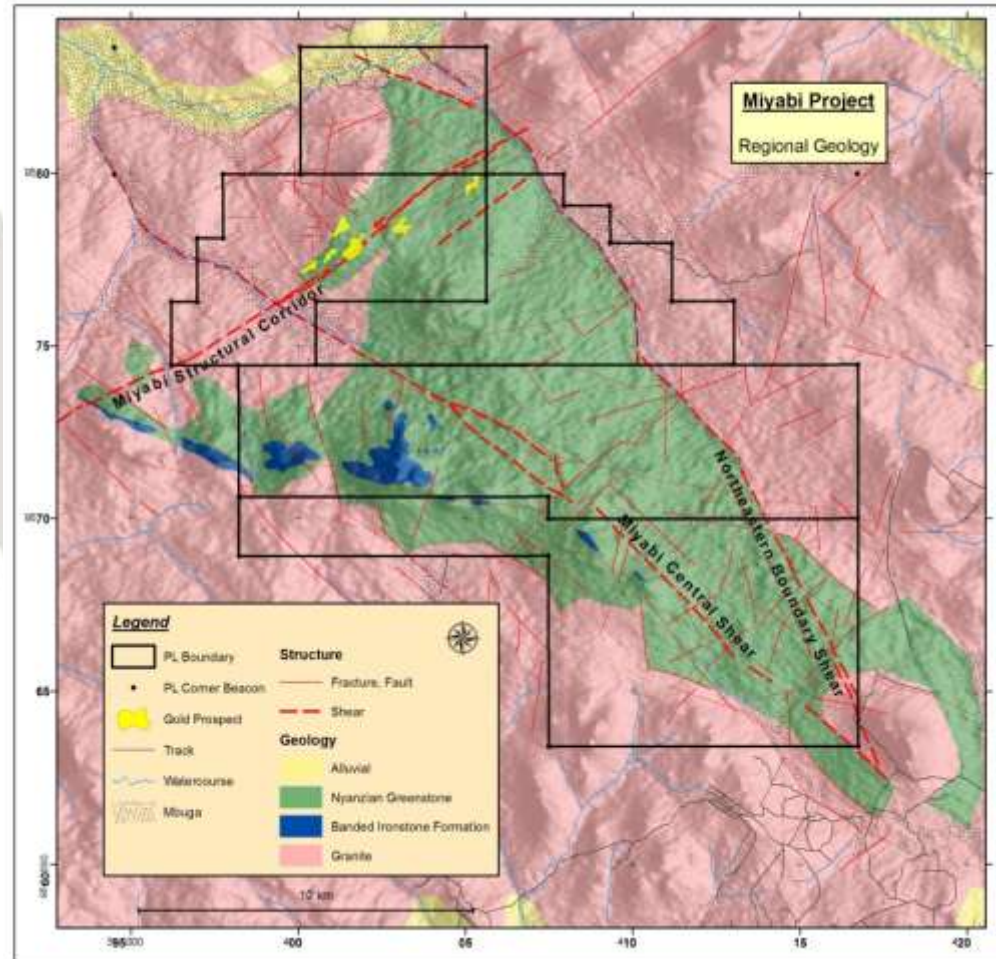
- Most major deposits located in Lake Victoria Goldfields
- Archaean granite-greenstone terrane similar to Western Australia
- Exploration boom of 1990's led to the discovery of numerous deposits
- Numerous large deposits (>4Moz)
- +40Moz gold endowment in 200km diameter
- Excellent infrastructure





# MIYABI - OVERVIEW

- 252km<sup>2</sup> project area
- Approximately 30km from Resolute Resources Nyakafuru (1.1 Moz Au)
- 200km southwest of Mwanza,
- JORC Resource of 14.3Mt at 1.5g/t for 704,000oz JORC Resource including new high grade prospect at Dalafuma 1.2Mt at 4.1g/t (August 2015)
- Dalafuma mineralisation remains open down dip and along strike
- Geophysical reinterpretation of all previous exploration and drill target generation underway
- Project area largely under explored
- Excellent exploration targets defined for follow up drilling



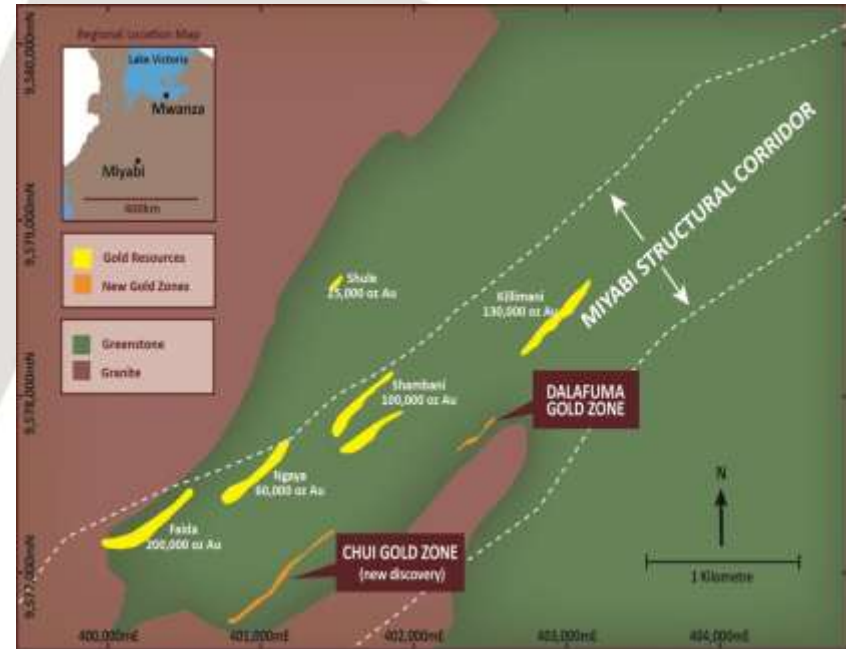
# MIYABI HIGH GRADE DISCOVERY - DALAFUMA

Dalafuma prospect discovered by RVY includes:

- **18m @12 g/t Au from 46m**
- **28m @ 6.7g/t Au from 16m**
- **16m @ 11.9g/t Au from 65m including 5m @ 27.7g/t**
- **18m @ 6.9g/t Au from 111m including 3m @ 21.4g/t**

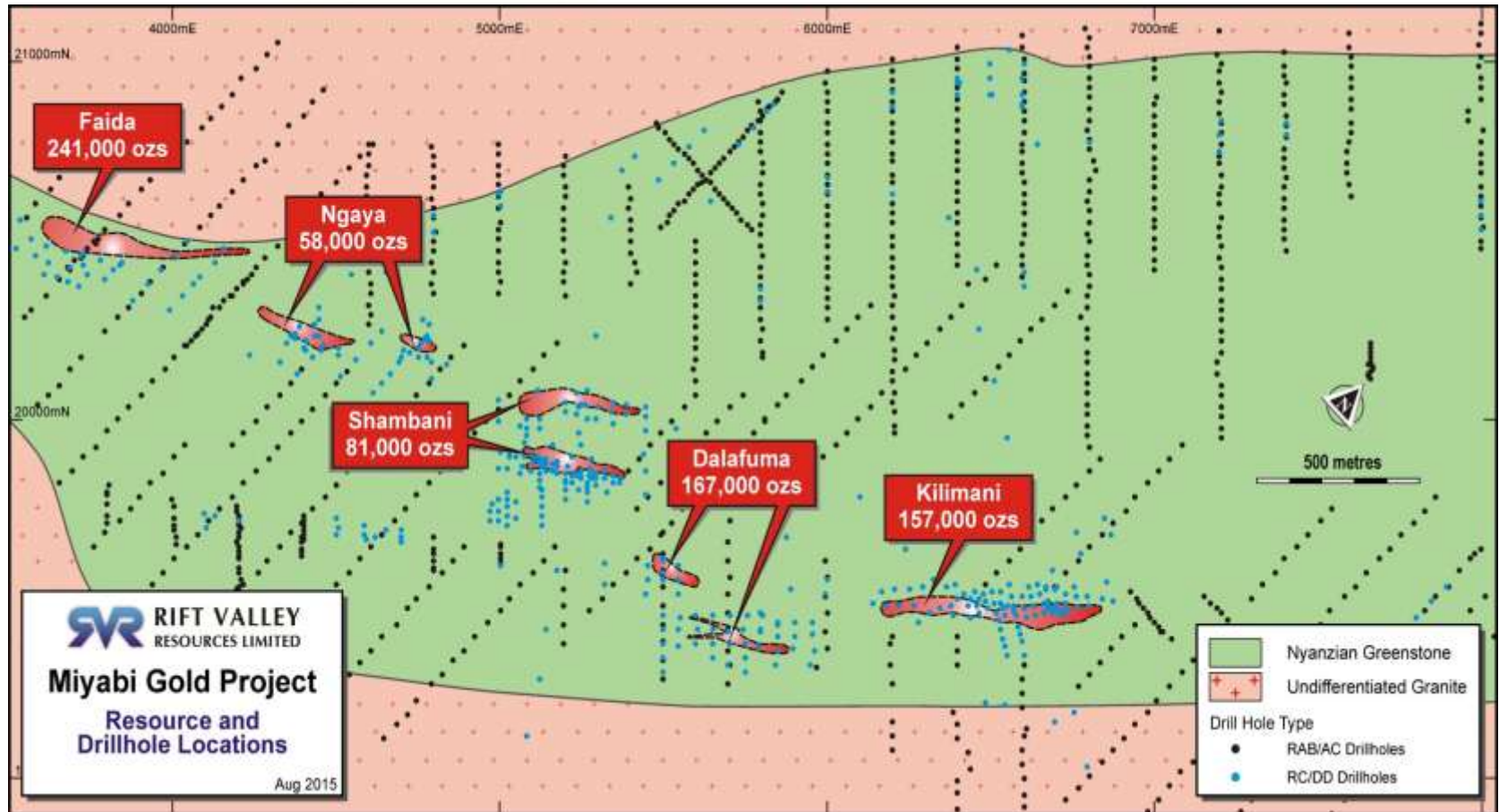
Dalafuma Northwest includes:

- **23m @ 4.2g/t Au from 45m**
- **42m @ 0.7g/t from 18m Including 6m @ 2.5g/t**
- **30m @ 0.9g/t from 72m including 9m @1.7g/t**



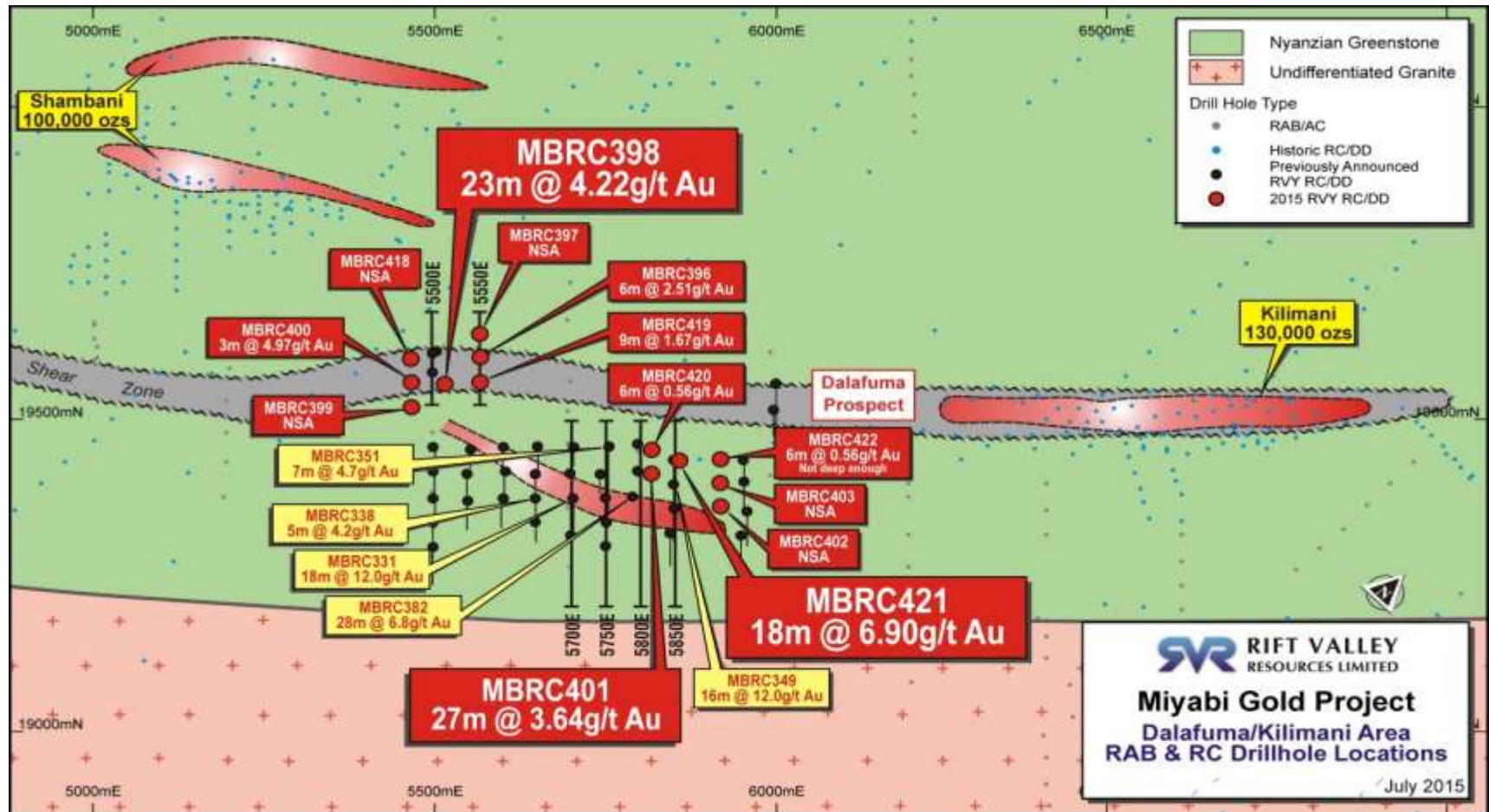


# RESOURCE DRILLHOLE LOCATIONS

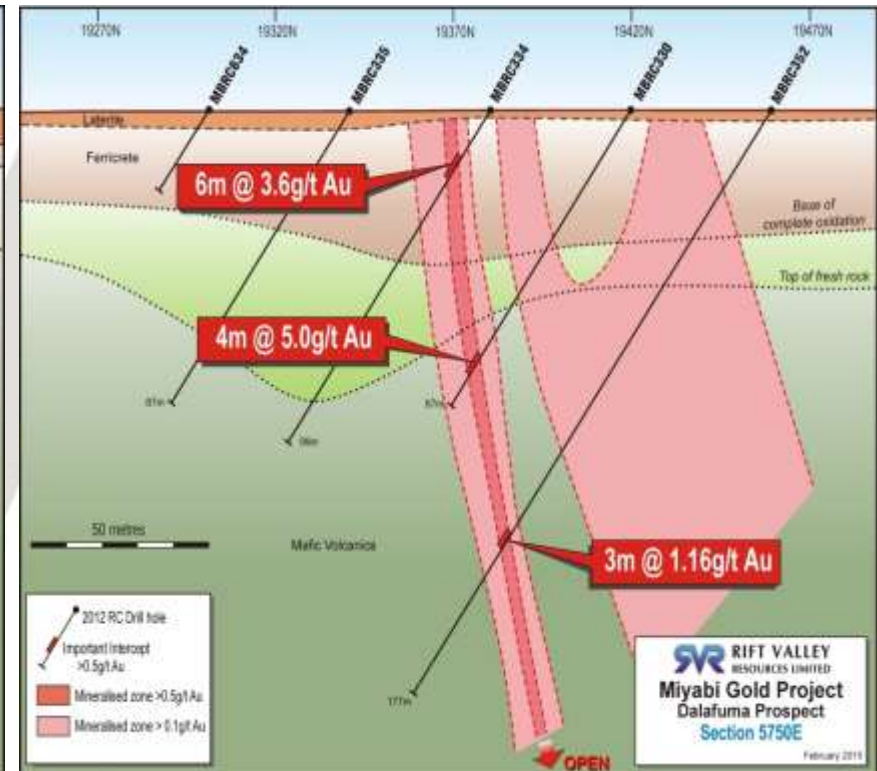
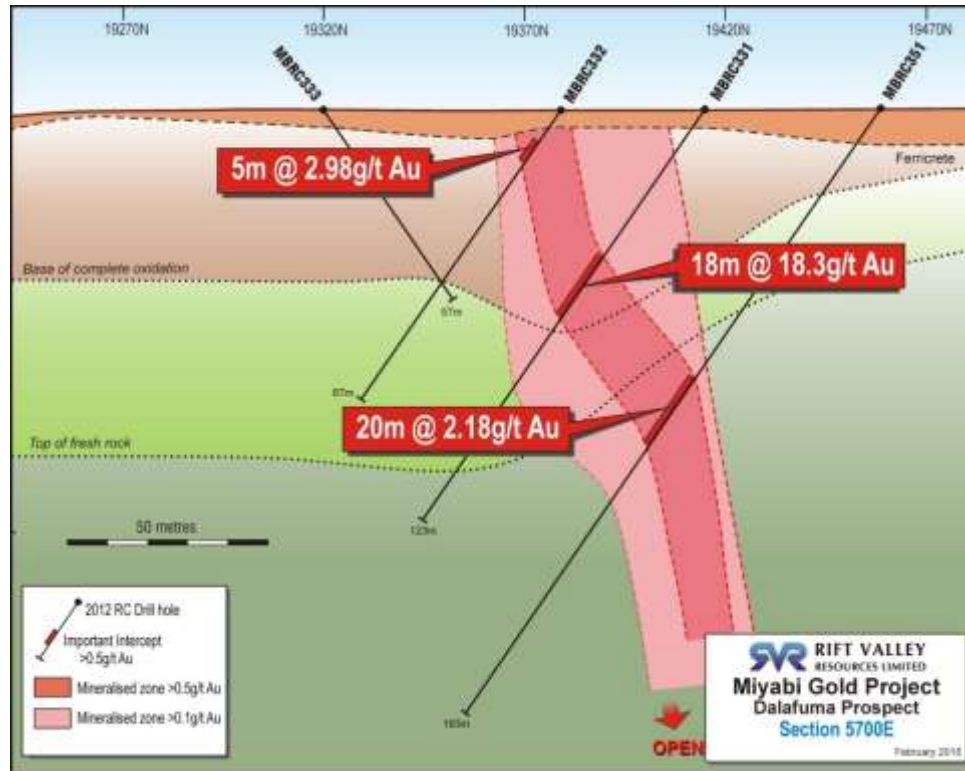




# DALAFUMA /DALAFUMA NORTHWEST/KILIMANI

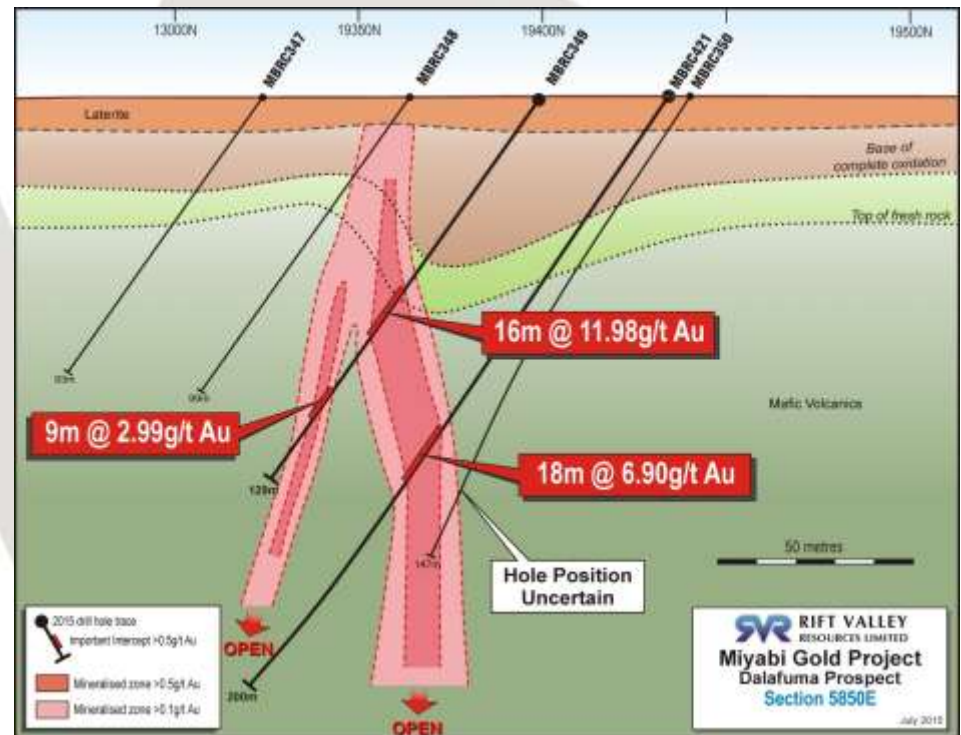
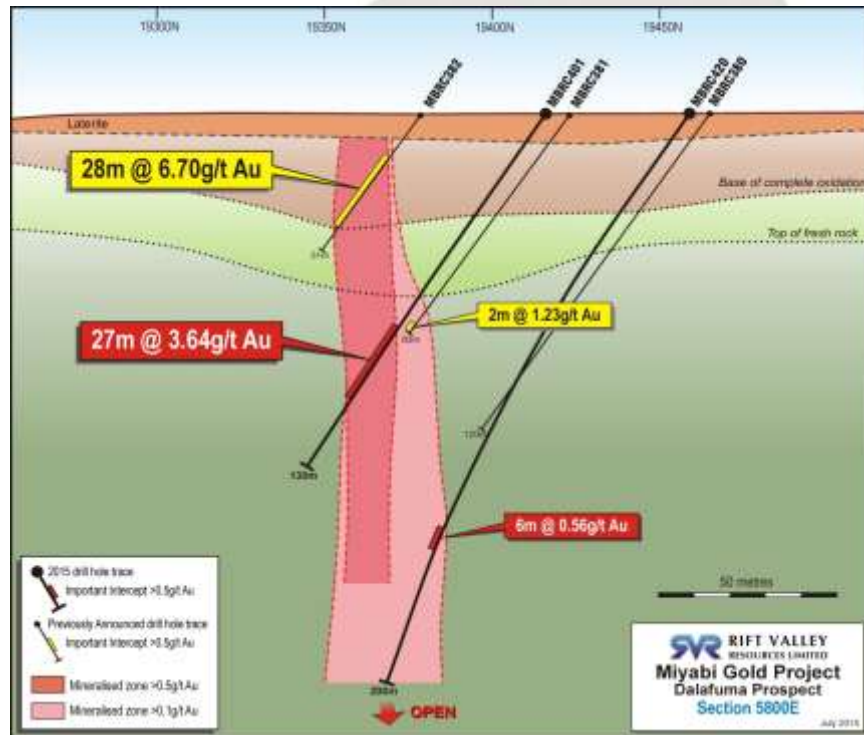


# DALAFUMA SECTIONS 5700E & 5750E

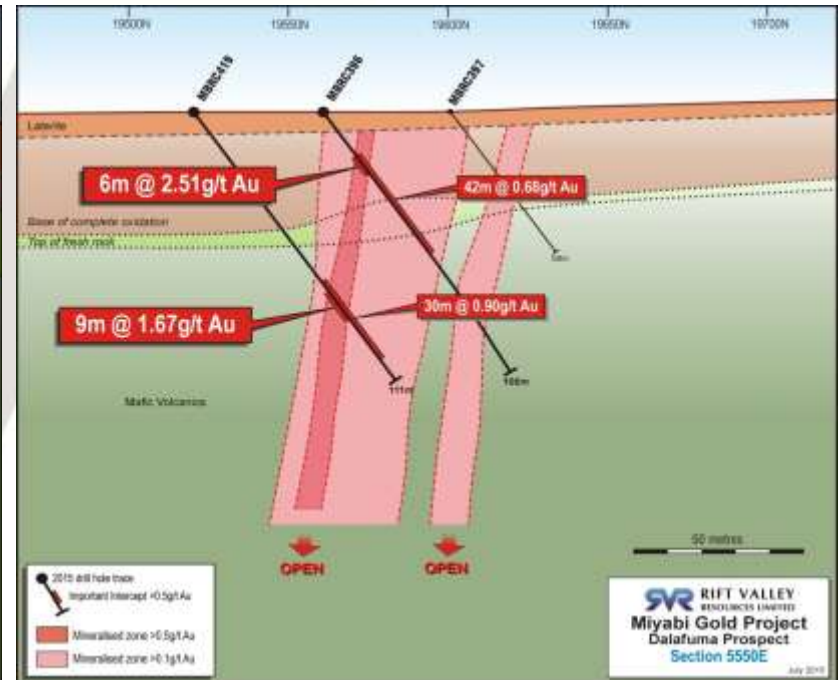
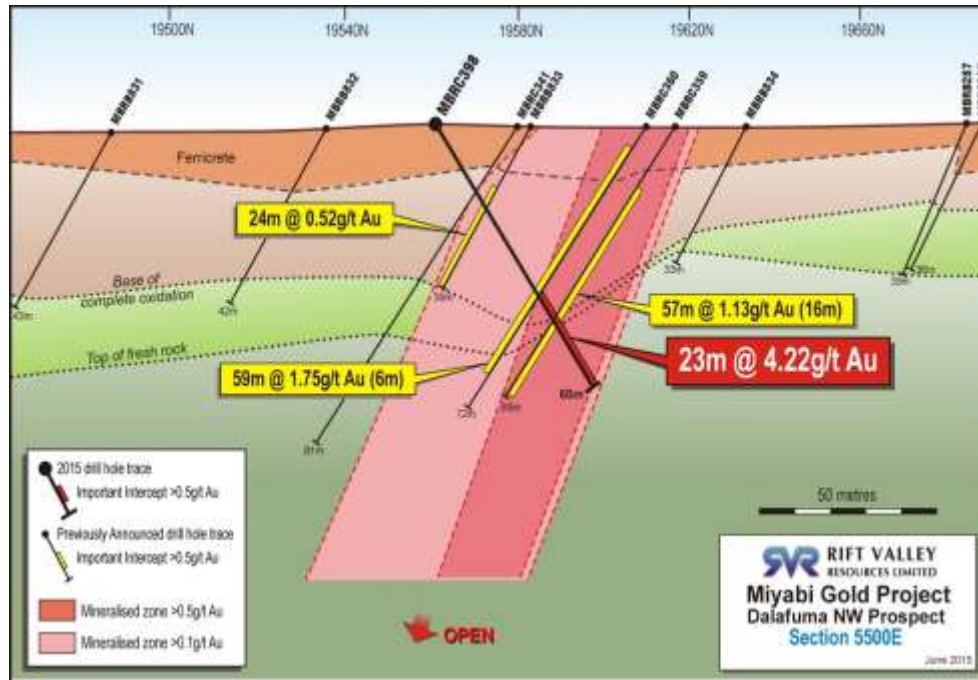




# DALAFUMA SECTIONS 5800E & 5850E



# DALAFUMA NORTHWEST SECTIONS 5500E & 5550E

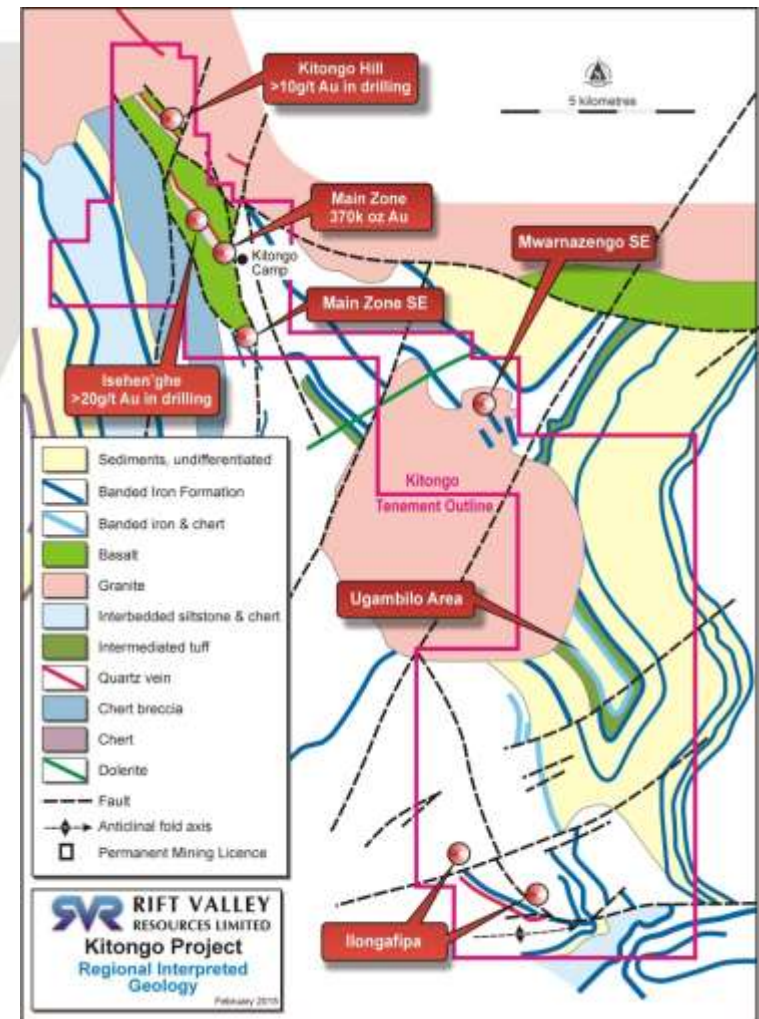




# KITONGO OVERVIEW

- 128km<sup>2</sup> project area with tenements renewed in 2014 for 5 years
- All-weather access and 90 minutes drive from Mwanza
- Highly prospective greenstone belt
- Negligible regional exploration and no drilling from 2002 until RVY program in 2014
- JORC Resource of 7.8Mt @1.5 g/t for 370,000oz\* at Main Zone remains open at depth
- Drilling has defined high grade prospects at Isehenge and Kitongo Hill including:
  - 3m at 19.60g/t from 141m
  - 2m at 15.75g/t from 81m
  - 12m at 12.95g/t from 74m
- Little historic exploration outside of Main Zone area

\* Kitongo resource lies within Primary Mining Licence allowing exploitation by local, small scale artisanal miners.



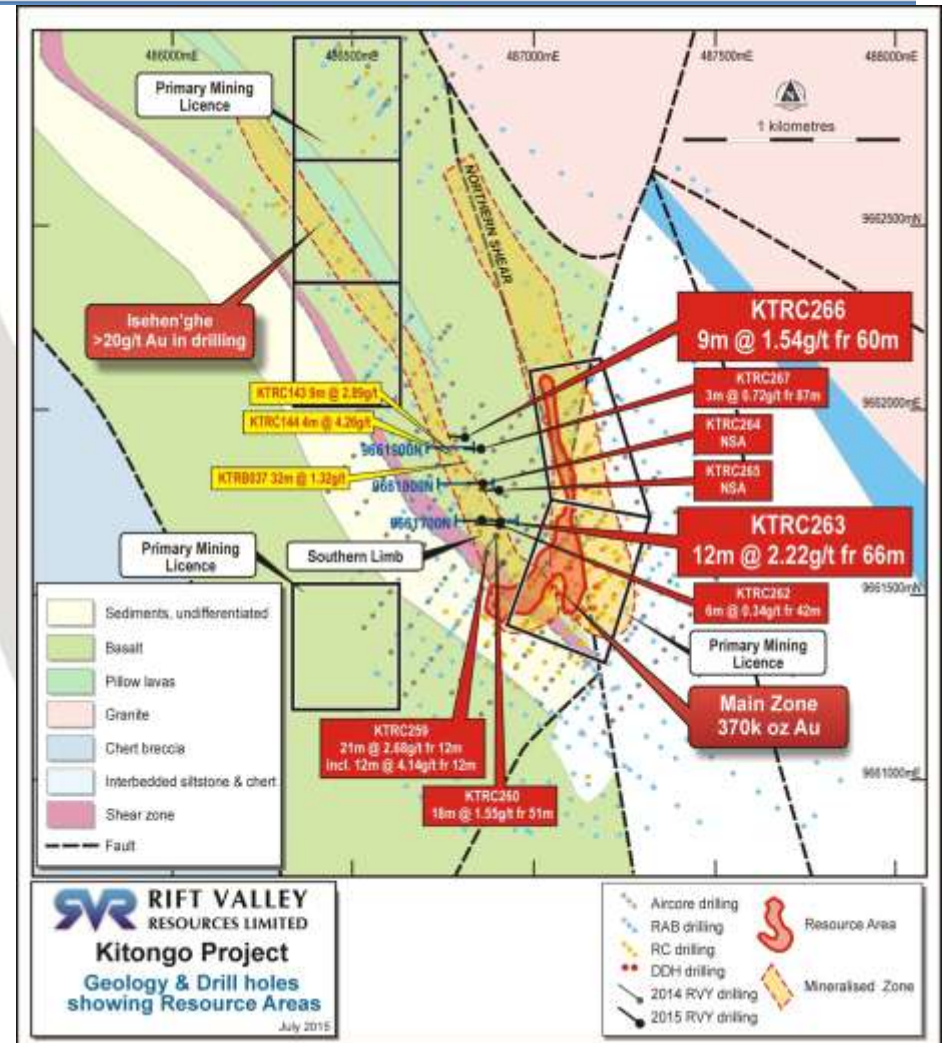
# KITONGO – MAIN ZONE

## ➤ Northern Shear

- 800m strike length – open at depth (most historic drilling above 80m vertical)
- RVY drilling in 2014 confirmed resource and extensions including:
  - 21m at 2.43g/t from 117m in KTRC255
  - 12m @ 1.67g/t from 69m in KTRC256

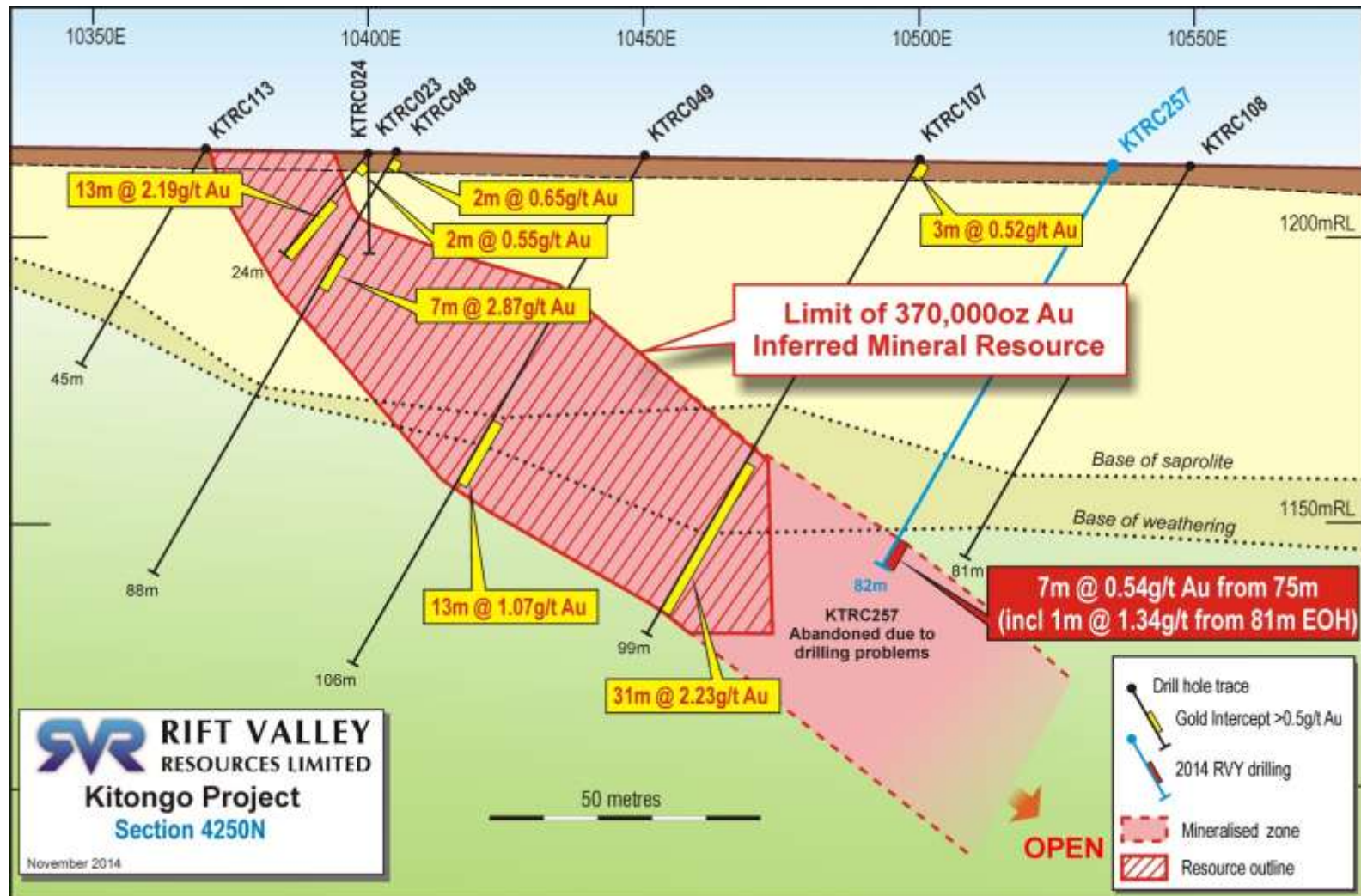
## ➤ Southern Limb

- Historic RAB and air-core drilled down-dip therefore mineralised zone wasn't properly tested
- Re-interpretation was confirmed by recent RVY drilling including:
  - 21m at 2.68g/t from 12m in KTRC259
  - 18m at 1.55g/t from 51m in KTRC260
- Broad, shallow mineralisation is open along strike and down dip.

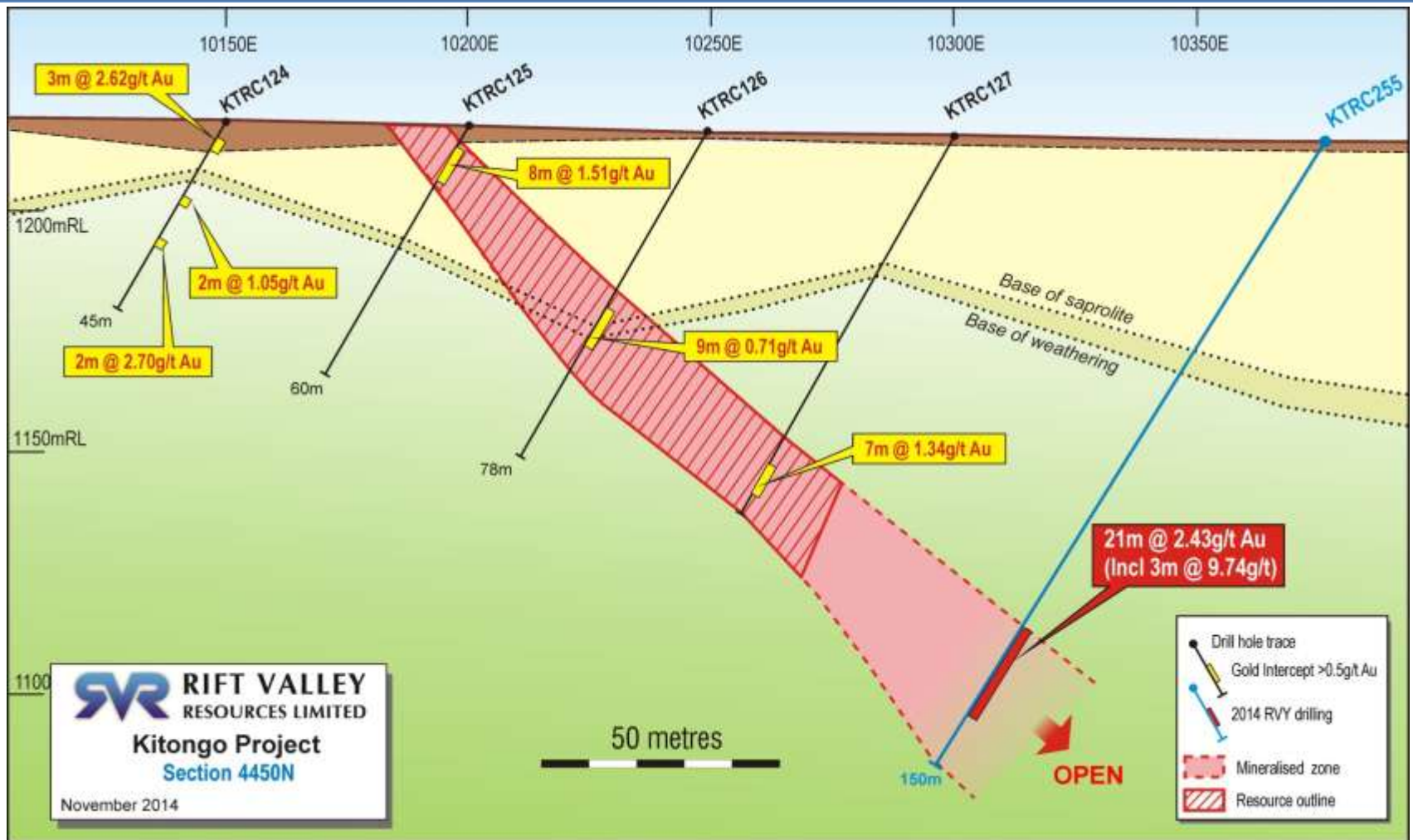




# KITONGO SECTION 4250N

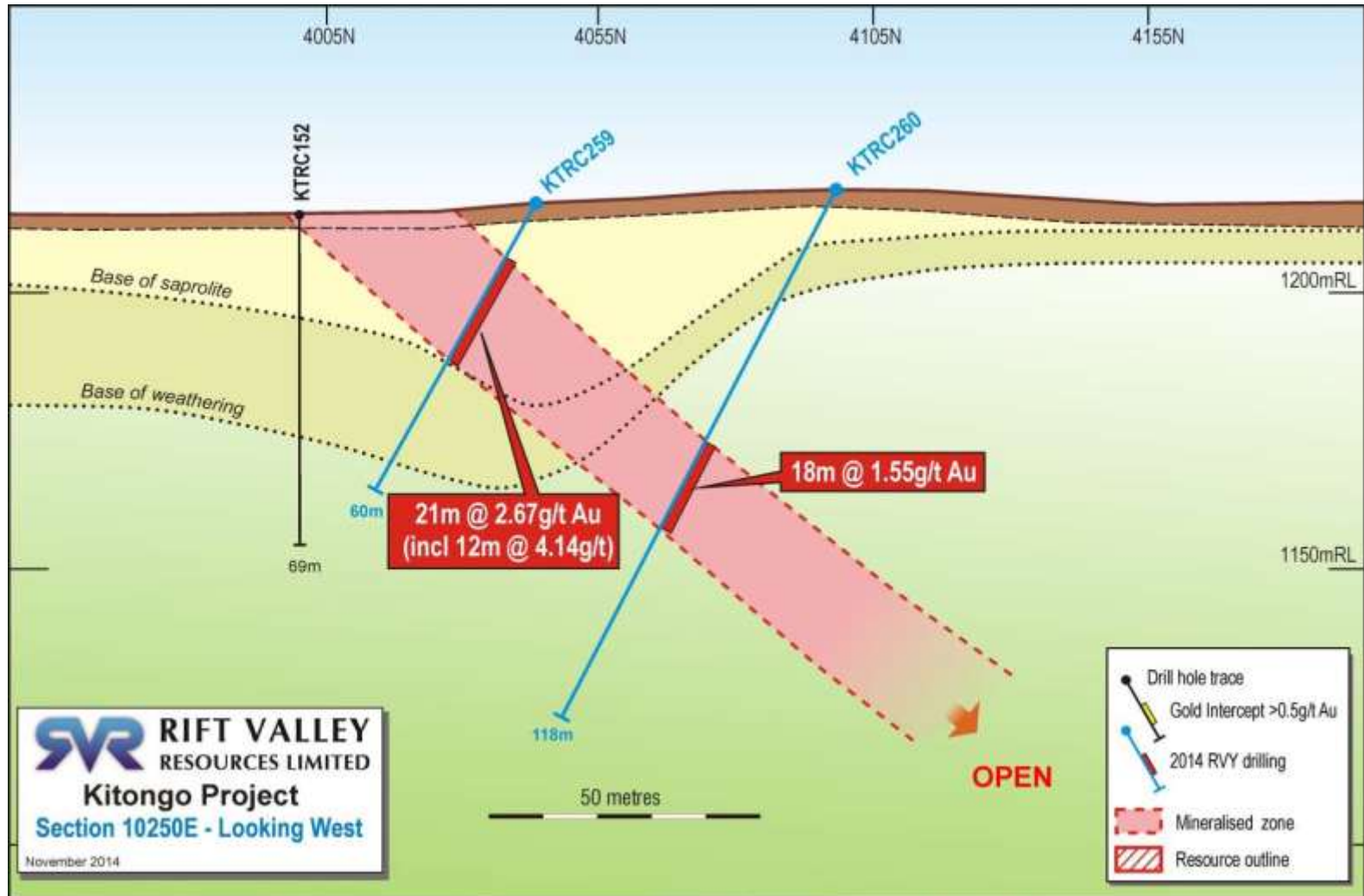


# Kitongo Section 4450N





# KITONGO SECTION 10250E

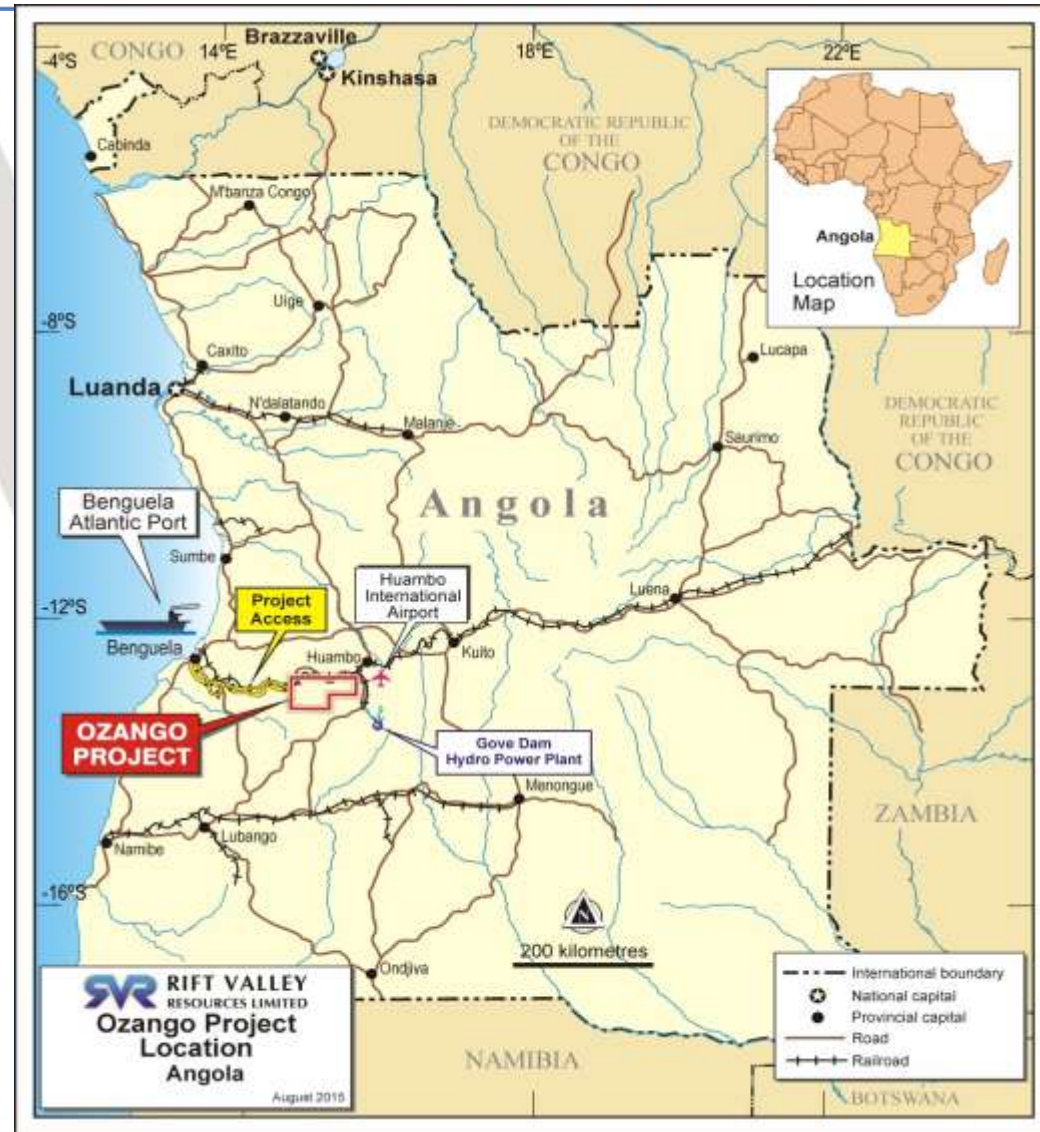


# ANGOLA OVERVIEW

## Angola – Africa's new frontier

### Why are we there?

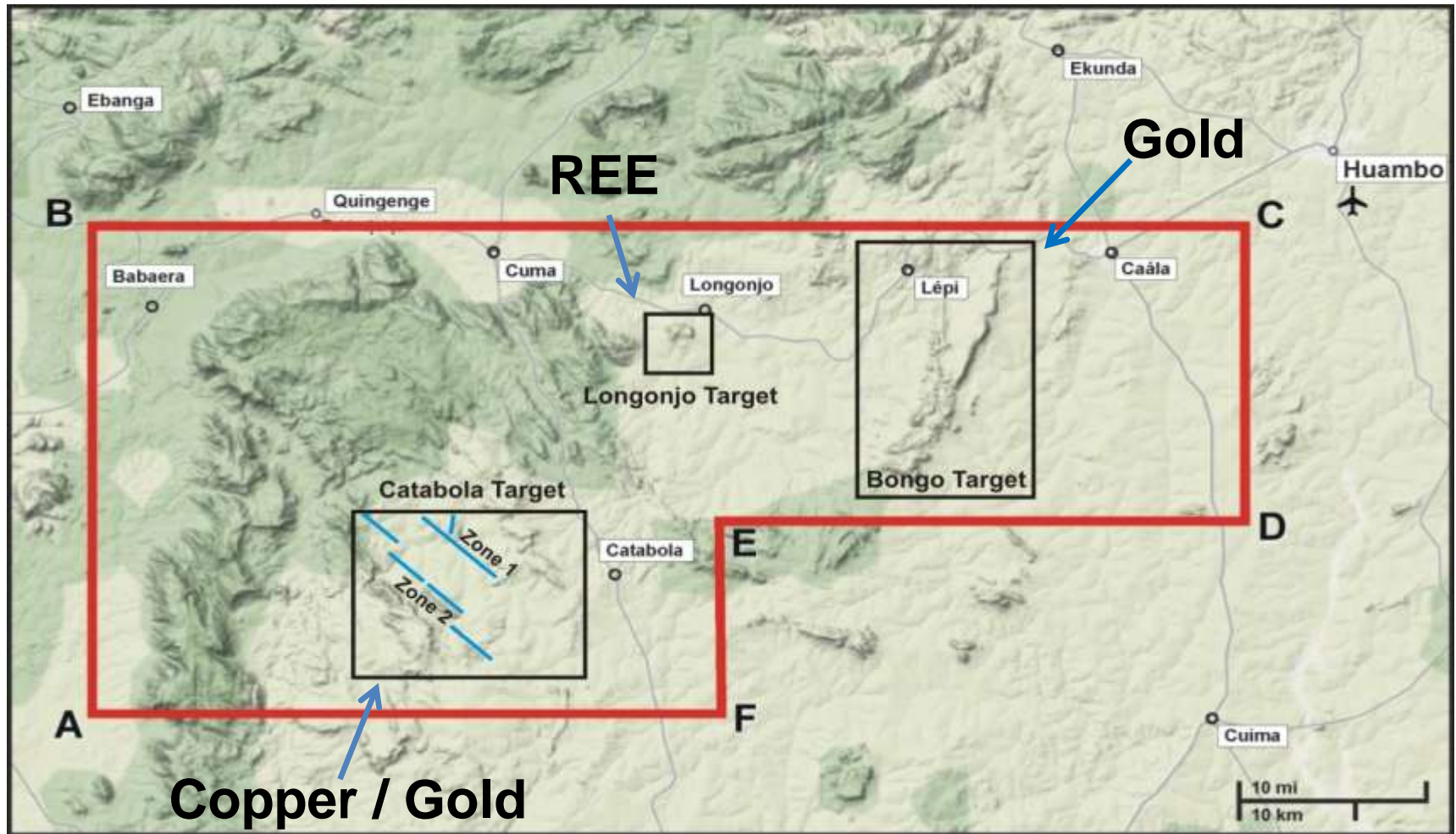
- **Geology - Archean Granite Greenstone terrane - similar geology to Brazil, Ghana, WA**
- **Limited history of hard rock mining**
- **Department of Geology and Mines is committed to promote foreign investment into the minerals sector**
- **US \$400million plus Government funded airborne survey commenced**
- **Sound Mining and Investment Code**
- **Ferrangol as strategic Government partner**
- **GeoAngol – Assay Labs established - Drilling Rigs acquired**
- **Good infrastructure**
- **Rift has 1<sup>st</sup> mover advantage**
- **25% Mining Tax and 3% to 5% Royalty**





# OZANGO LICENCE ANGOLA : 3,670 Km<sup>2</sup>

## 3 MAJOR “WORLD CLASS” TARGET AREAS



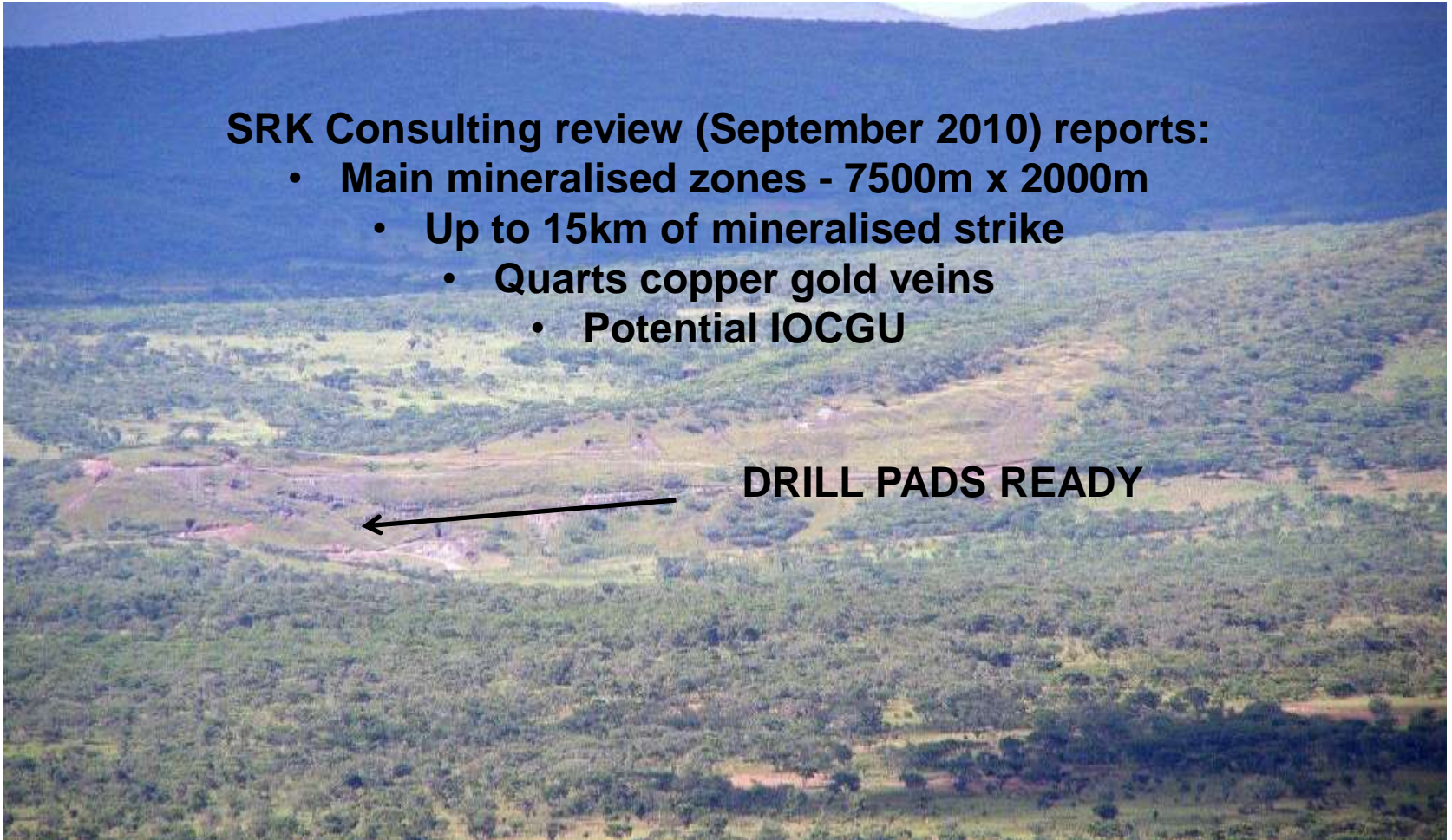
# CATABOLA GOLD TARGET (Au, Cu, Fe, U)

---

**SRK Consulting review (September 2010) reports:**

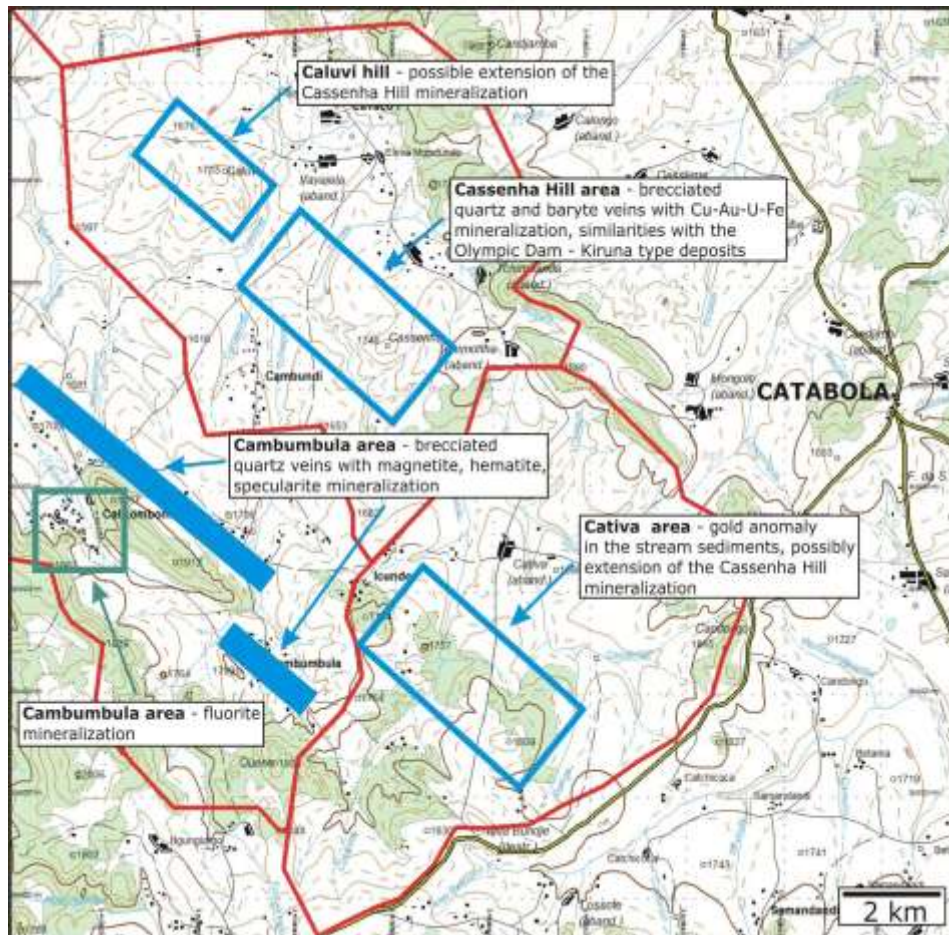
- **Main mineralised zones - 7500m x 2000m**
  - **Up to 15km of mineralised strike**
    - **Quartz copper gold veins**
    - **Potential IOCGU**

**DRILL PADS READY**





# CATABOLA GOLD-COPPER PROSPECT AREAS



## Cassenha Hill (Copper-Gold)

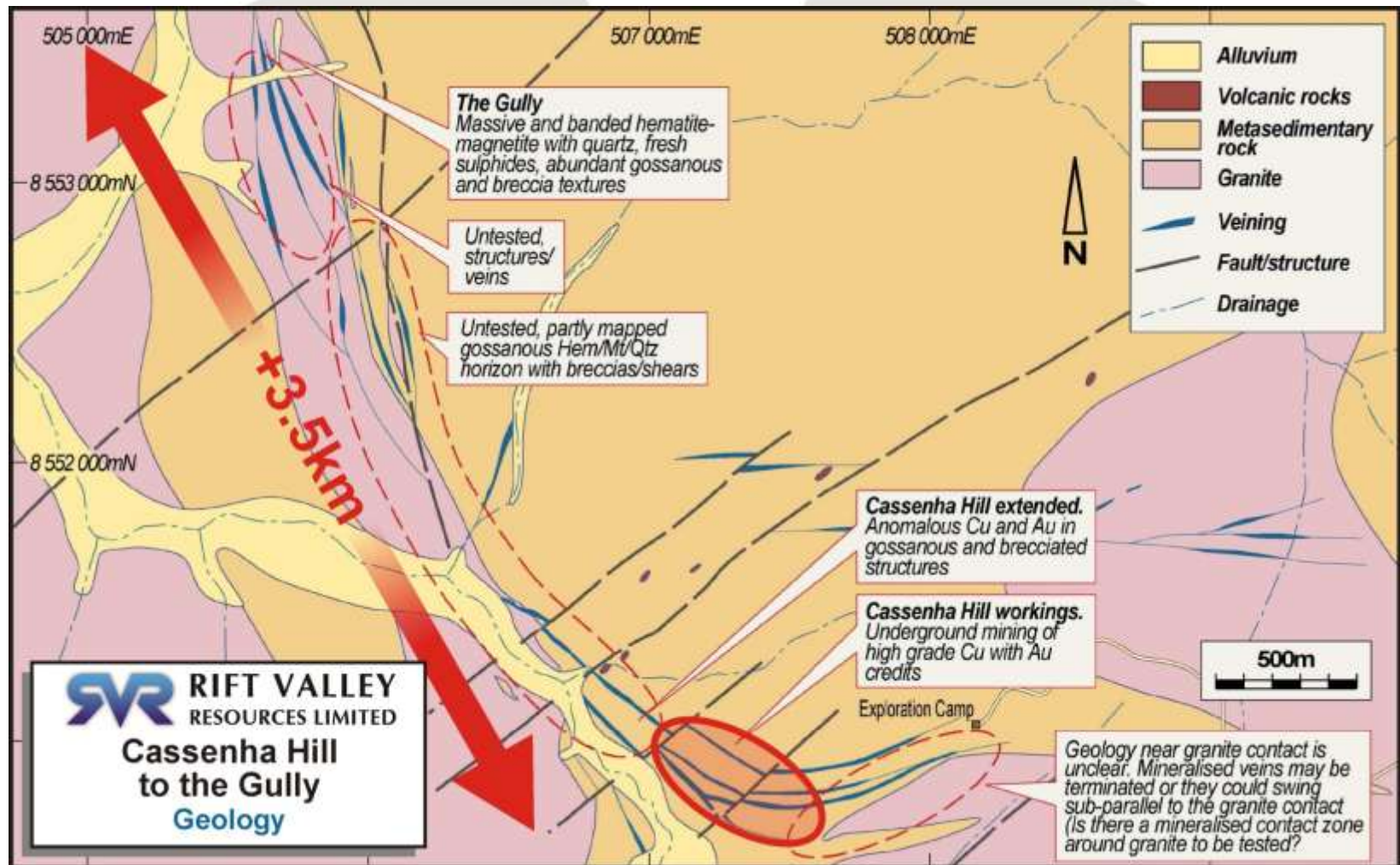
- 3,000m x 750m mineralized zone, open to the northwest.
- Up to 6 g/t gold in rock chip samples.
- Up to 9% copper in soil samples.
- Camp and roads refurbished
- Phase 1 Drill program commenced.
- Initial 6 diamond drill holes for a nominal 1000 meters.

## Cambumbula – Cativa (Copper-Gold-Iron)

- New area, known mineralized zone 5,000m x 400m, possible length >20,000m.
- Lenses of massive magnetite/hematite up to 600m x 200m.
- Drill ready



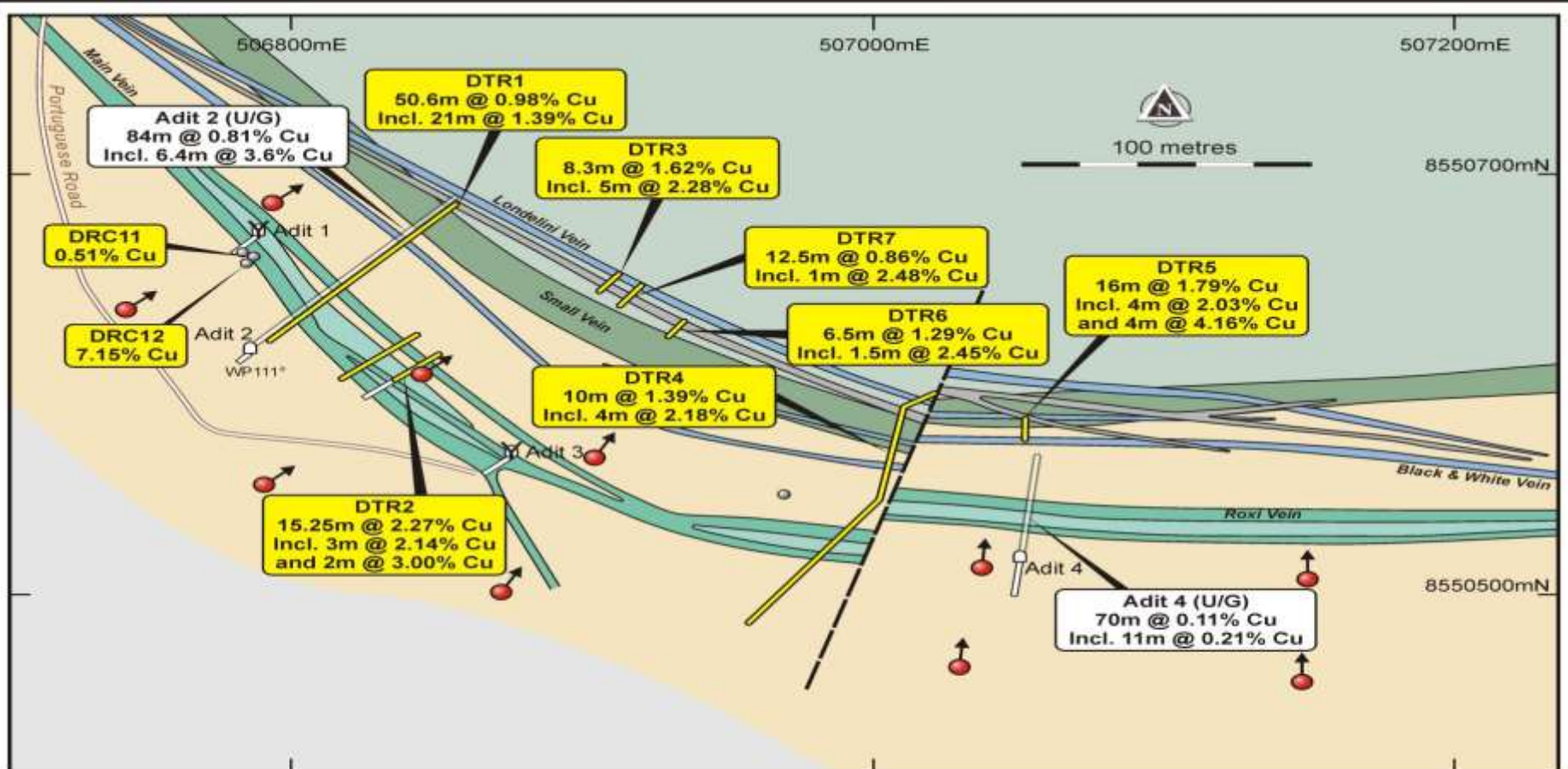
# CASSENHA HILL – POTENTIAL STRIKE EXTENTION



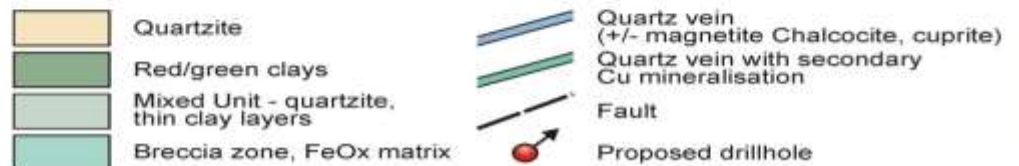


# CASSENHA HILL PROSPECT

## MAIDEN 6 HOLE DIAMOND DRILLING PROGRAM - NOMINAL 1000 METERS



**RIFT VALLEY**  
RESOURCES LIMITED  
**Ozango Project**  
**Catabola Prospect**  
**Proposed Drill Holes**

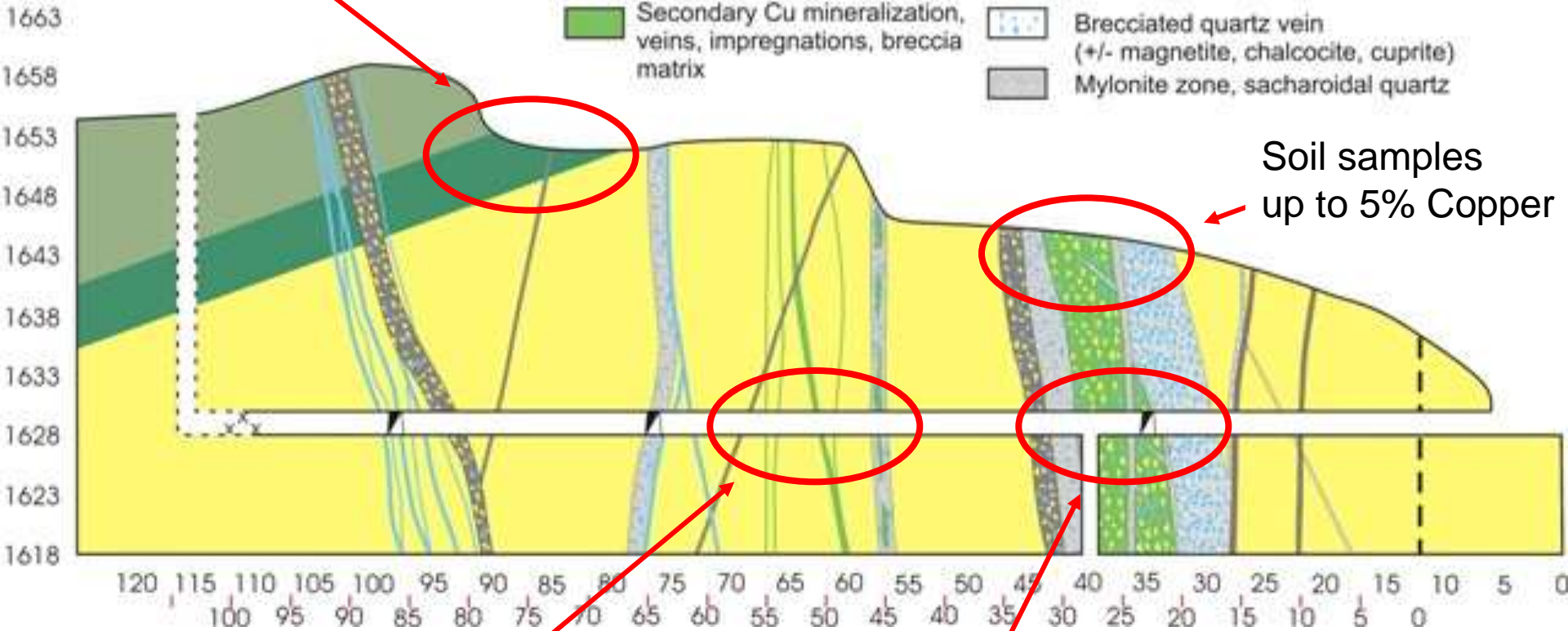


# Cross section no. II

Scale 1:500



Copper clays  
3-5m @ 9% Copper



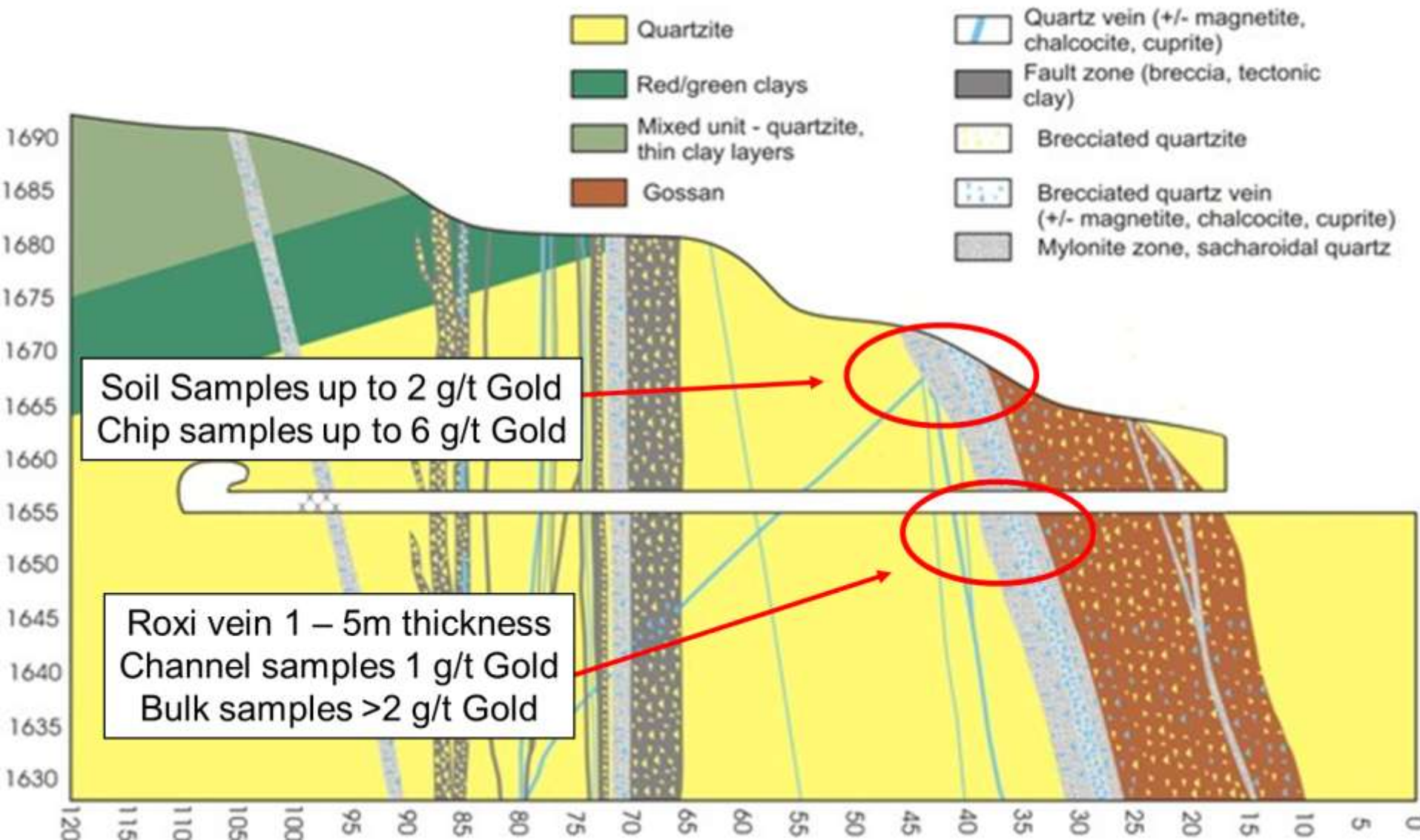
Malachite veins zone  
5.5m @ 2.5 % Copper

18m @ 1.4% Copper  
7.5 m @ 2.8% Copper



# Cross section no. IV

Scale 1:500



# DRILLING AT CASSENHA HILL

---





# CASSENHA HILL CAMP

---



# CASSENHA HILL DRILL PAD PREPARATION





# COPPER-GOLD MINERALISATION

---



Cassenha Hill Panoramic View





# COPPER MINERALISATION

---





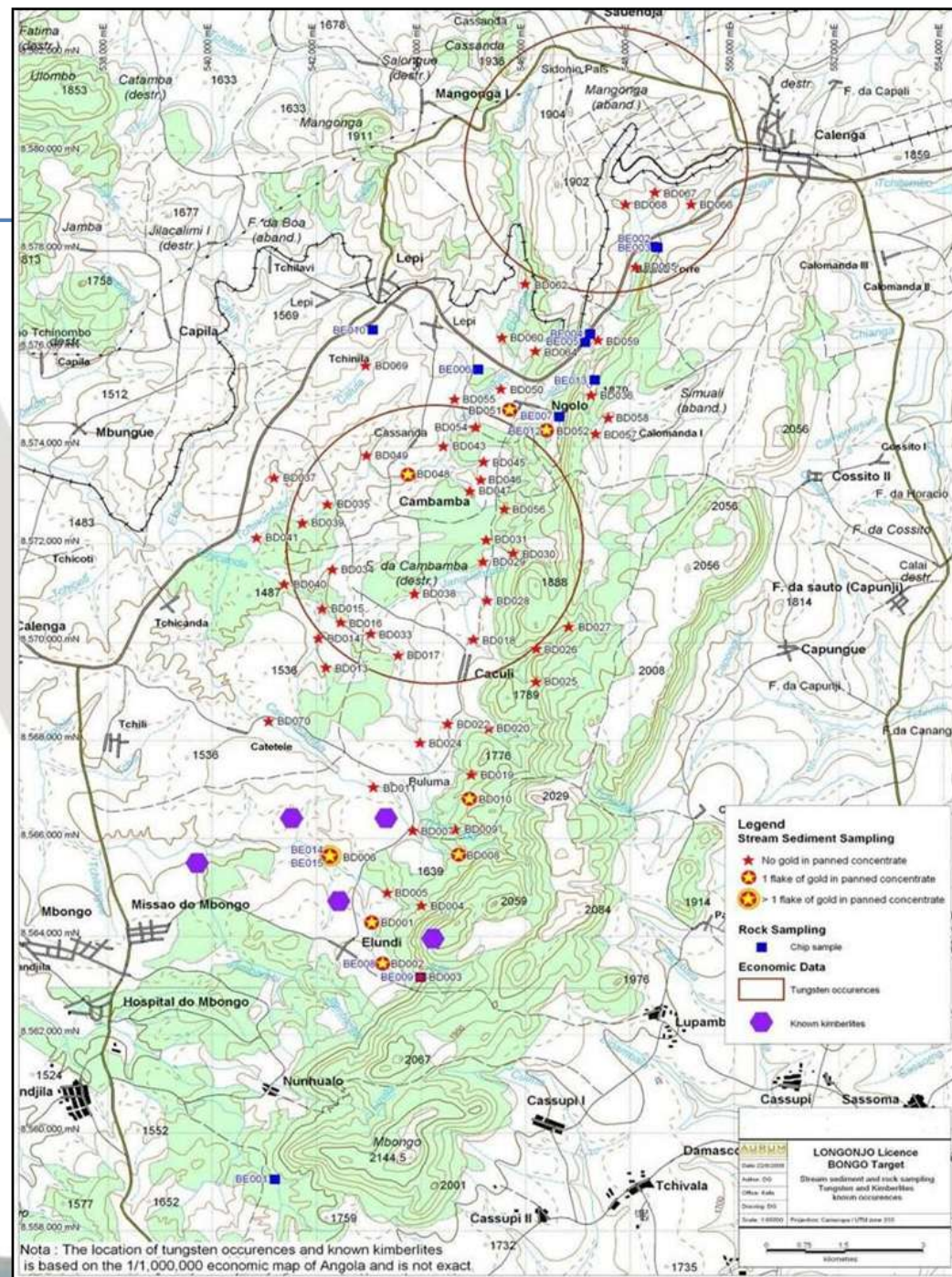




# BONGO GOLD PROSPECT

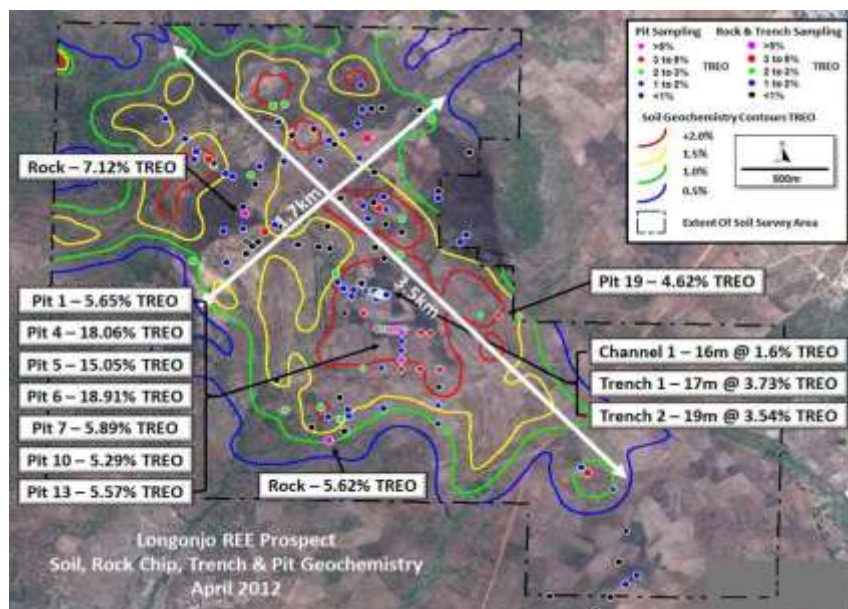
## 230Km<sup>2</sup>

- Over 10 km long fault zone structure.
- SRK Consulting (Sept 2010) review compares the Bongo gold target with the 5 million oz Macraes Flat project in New Zealand.
- Prospective for shear hosted gold mineralization.
- Abundant alluvial gold identified in panned concentrates.
- Systematic stream sediment sampling program currently underway





# LONGONJO RARE EARTH - LARGE PROSPECTIVE AREA WITH INFRASTRUCTURE

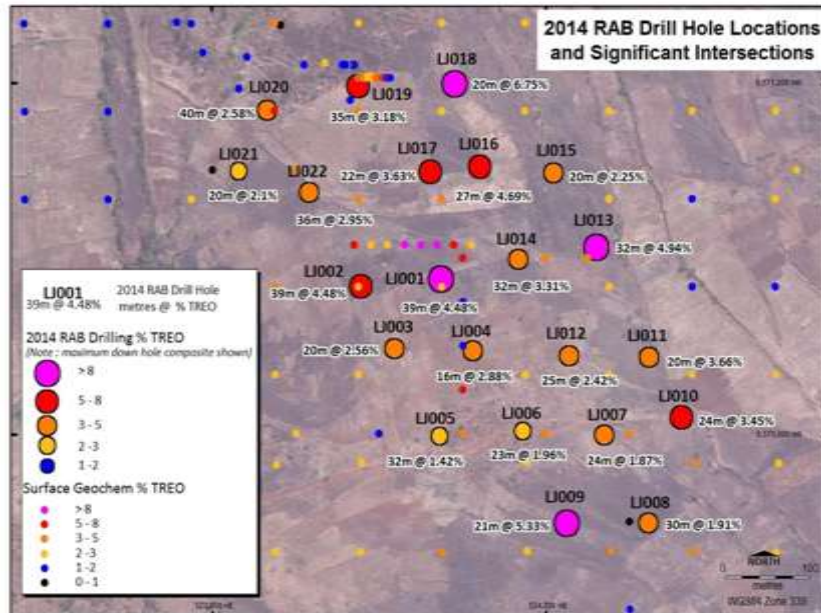


	La <sub>2</sub> O <sub>3</sub> %	CeO <sub>2</sub> %	Pr <sub>6</sub> O <sub>11</sub> %	Nd <sub>2</sub> O <sub>3</sub> %	Sm <sub>2</sub> O <sub>3</sub> %	Gd <sub>2</sub> O <sub>3</sub> %	Y <sub>2</sub> O <sub>3</sub> %	Other %	TREO %
RVY drill campaign	0.78	1.38	0.14	0.45	0.05	0.02	0.05	0.03	2.96

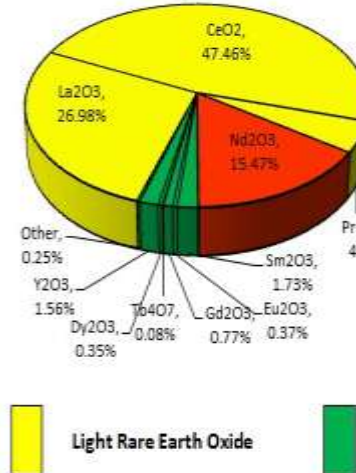
	La <sub>2</sub> O <sub>3</sub> %	CeO <sub>2</sub> %	Pr <sub>6</sub> O <sub>11</sub> %	Nd <sub>2</sub> O <sub>3</sub> %	Sm <sub>2</sub> O <sub>3</sub> %	Gd <sub>2</sub> O <sub>3</sub> %	Y <sub>2</sub> O <sub>3</sub> %	Other %	TOTAL %
RVY Drill Campaign	27	47	5	15	2	1	2	1	100
Peak Ore Resource	27	48	5	17	2	1	0	0	100



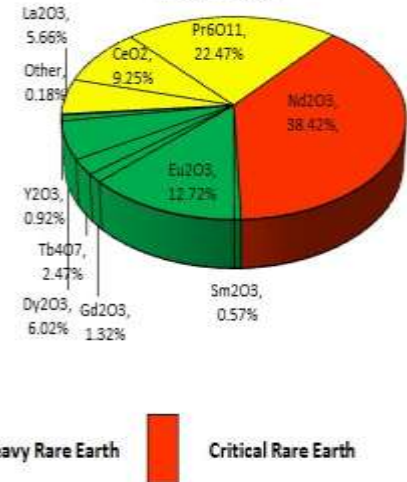
# CRITICALS LIGHTS & HEAVIES - HIGH GRADE



**Longonjo - REO distribution by Grade**



**Longonjo - REO distribution by In-situ value**



First pass exploratory drilling conducted at the Company's Longonjo prospect in February 2014 tested a robust geochemical anomaly and returned high grade rare earth assays, as total rare earth oxides (TREO), from every hole from surface to blade refusal. From a total of 168 composite samples generated during the campaign, the highest grade returned was 11.32%, the lowest 0.45%, with an average of 2.96% TREO over all of the samples





# METALLURGICAL TEST WORK

- Beneficiation test work produced a concentrate containing 19.44% Rare Earth Oxides (REO)
- Results to date represent a greater than 3 times upgrade of the head sample
- Mineralogical test work better defines the oxide material
- Leach recovery test work has commenced on beneficiated concentrate.
- Beneficiation produces approximately 60% in situ value of praseodymium and neodymium used in new rare earth magnets and battery technology



Trench sampling at Longonjo REE



## 2015 - THE YEAR IN REVIEW

---

- **5 Feb – Ministry of Geology and Mines approves Mining and Investment Contract between 70% Owned Ozango Minerais SA and FERRANGOL EP (Angola)**
- **10 Feb – Term sheet signed for Metemi Acquisition (Tanzanian Assets)**
- **10 March – Completion of Metemi acquisition and \$4.0mil Capital raise**
- **11 March – WH Ireland initiates research on RVY**
- **29 May – Exploration commences at Miyabi project (Tanzania)**
- **11 June – Trenching at Longonjo Rare Earths (Angola) completed. Bulk sample shipped to Australia for Metallurgical test work**
- **26 June – 1<sup>st</sup> Miyabi Drill Results**
- **6 July – Drilling commences at Kitongo (Tanzania)**
- **23 July – Further high grade gold at Miyabi**
- **7 August – Drilling results at Kitongo confirm southern limb extension**
- **12 August – Resource upgrade at Miyabi – Additional 167,000 oz at 4.1g/t (Dalafuma) – Total resource is now 14.3 Mt at 1.5g/t for 704,000 oz of Gold**
- **27 August – Initial Met work at Longonjo demonstrates that bulk sample material can be beneficiated to 19.44% Rare Earth Oxide (REO) representing a 3 times upgrade. Met work continuing.**





## 2015 – THE YEAR IN REVIEW

---

- **21 October – Mr Akram Aziz joins the Board of Directors**
- **5 November – New Licence issued to Ozango Minerais SA ( RVY 70% )**  
**The licence is for a term of 5 years commencing 3 November 2015 with two 1 Year extensions. The Licence is for Precious Metals, Base Metals, Rare Earth Minerals and Rare Minerals.**
- **9 November – Drilling Commences at Cassenha Hill Copper/Gold prospect. Phase 1 drilling is for an initial 6 hole program for a nominal 1000 meters of diamond core drilling.**



# MINERAL RESOURCES

**Miyabi Gold Project July 2015 Mineral Resources at 0.5g/t Au Cut-off**

Deposit	Indicated		Inferred		Total		
	Mt	g/t	Mt	g/t	Mt	g/t	Ounces
Dalafuma	0.5	5.4	0.7	3.1	1.3	4.1	166,700
Faida	3.3	1.4	2.2	1.2	5.6	1.3	241,100
Kilimani	2.7	1.3	1.0	1.4	3.7	1.3	156,700
Ngaya			1.7	1.1	1.7	1.1	57,700
Shambani	0.5	1.8	1.6	1.0	2.1	1.2	81,300
<b>Total</b>	<b>7.1</b>	<b>1.7</b>	<b>7.3</b>	<b>1.4</b>	<b>14.3</b>	<b>1.5</b>	<b>703,500</b>

**Kitongo Gold Project 2006 Inferred Mineral Resource**

Type	1.0g/t Au Cut-off			0.5g/t Au Cut-off		
	Mt	g/t	Moz	Mt	g/t	Moz
Laterite	0.4	2.1	0.03	0.8	1.3	0.04
Highly Ox	2.4	2.2	0.17	3.8	1.7	0.21
Moderately Ox	0.4	2.0	0.03	0.7	1.5	0.04
Fresh	1.2	1.7	0.07	2.5	1.2	0.09
<b>Total</b>	<b>4.4</b>	<b>2.0</b>	<b>0.29</b>	<b>7.8</b>	<b>1.5</b>	<b>0.37</b>





## CONTACT DETAILS

---

**Geoff Gilmour**

**Email:** [ggilmour@riftvalleyresources.com.au](mailto:ggilmour@riftvalleyresources.com.au)

[gclatworthy@riftvalleyresources.com.au](mailto:gclatworthy@riftvalleyresources.com.au)

[gcunnold@riftvalleyresources.com.au](mailto:gcunnold@riftvalleyresources.com.au)

**Rift Valley Resources**

**Ground floor, 10 Outram Street West Perth WA 6005**

**Email:** [info@riftvalleyresources.com.au](mailto:info@riftvalleyresources.com.au)

**Ph: 08 9221 0090**

**Fax:08 92210095**

