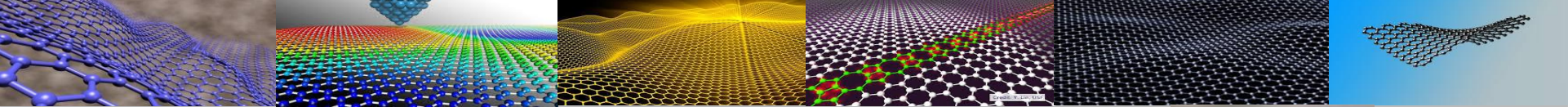


## High Grade Maiden Resource at Lindi Jumbo

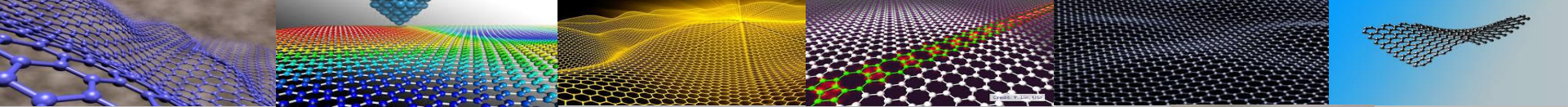




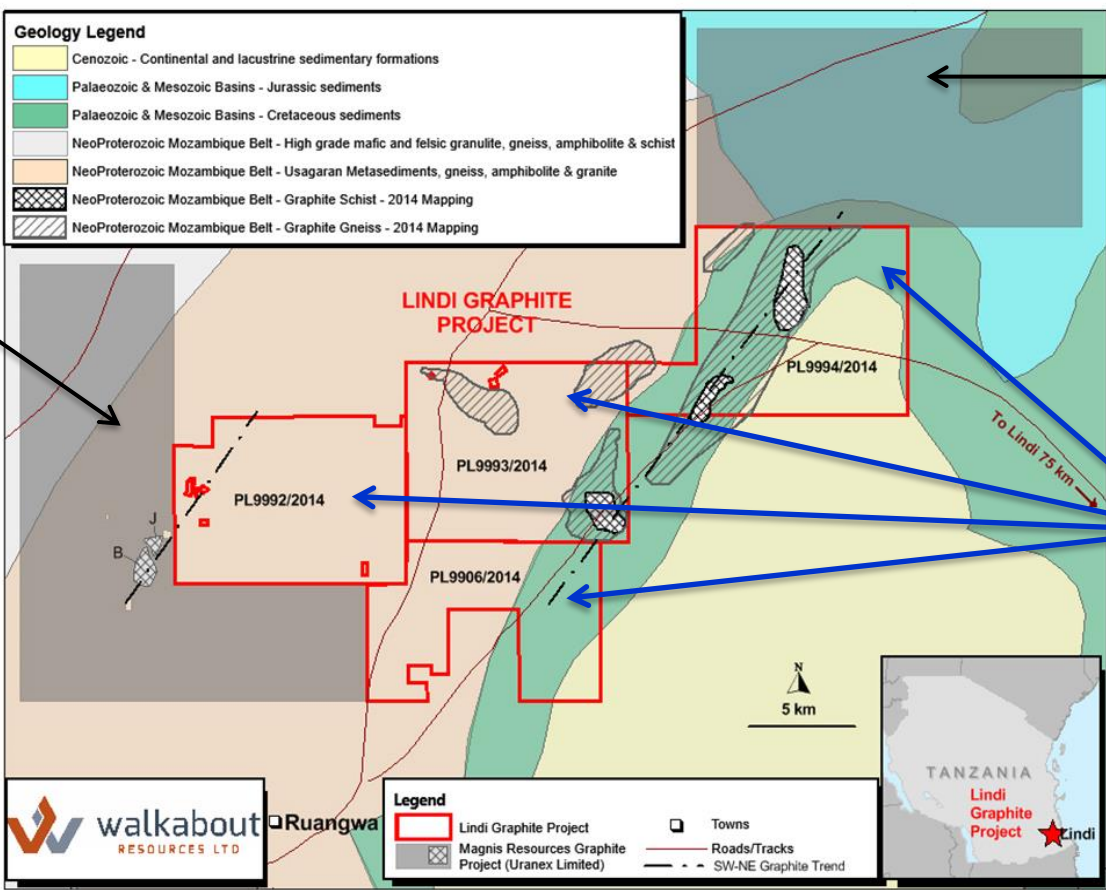
## Lindi Jumbo Project: Project Update



- Lindi Jumbo Graphite Project is **adjacent** to Magnis Resources' Nachu Project
- Maiden **resource** has been defined
- Very **high grade** mineable pocket near surface at suitable opencut mining widths
- 11.7 million tonnes @ 11.9% TGC enveloping;
- **2.6 million tonnes at 20.6% TGC** (*enough to produce 50kt/yr graphite for 10 years*)
- Metallurgical characterisation testwork results confirm graphite recovery of 98% and concentrate grade of **95.7% TGC**
- Up to **83.4%** in Large and Jumbo Flake with minimum of 52.2% of same
- Project is to be **fast-tracked** to develop First phase +25,000 tpa, large and jumbo flake graphite mining operation
- Production can be achieved in **CYR2017**



# Lindi Jumbo Project Location

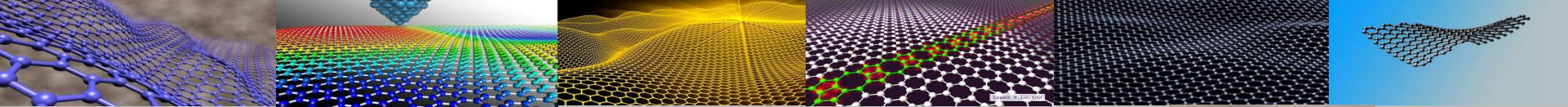


Nachu Graphite Project held by Magnis Resources Limited

Ruangwa Graphite Project held by Magnis

Lindi Jumbo Project 70% held by Walkabout



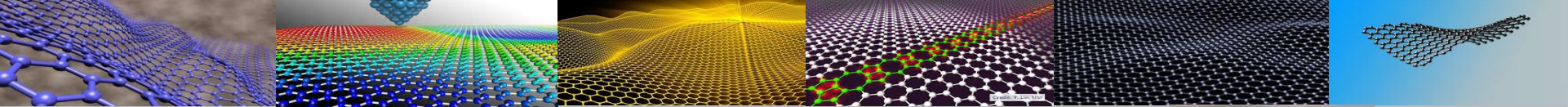


# Lindi Jumbo Project: Resource Model

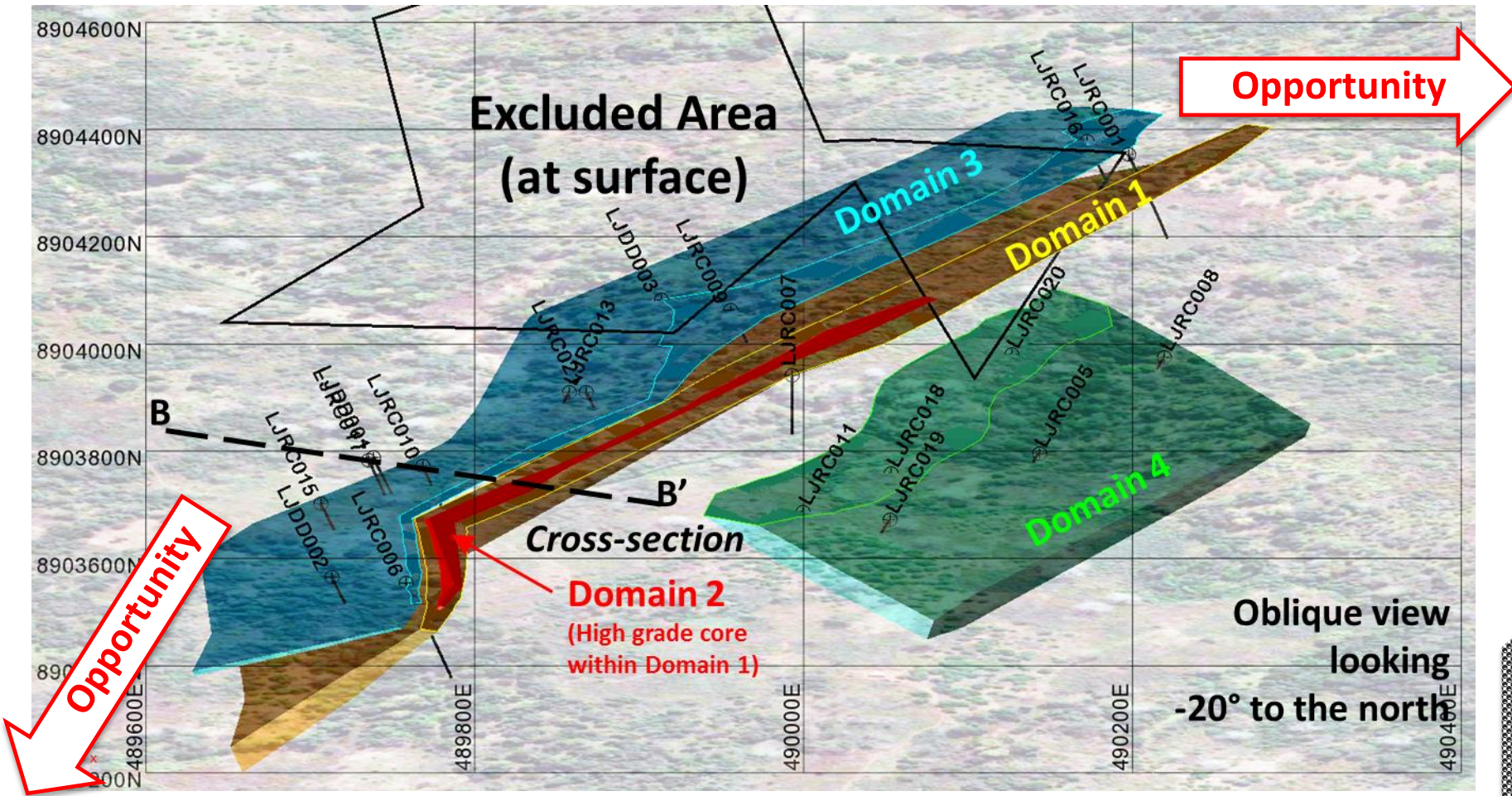
Category	Domain	Tonnes (millions)	TGC (%)	V <sub>2</sub> O <sub>5</sub> (%)	Contained TGC (t)	Contained V <sub>2</sub> O <sub>5</sub> (t)
Inferred	1	6.9	8.9	0.19	611,000	13,000
<b>Inferred</b>	<b>2<sup>1</sup></b>	<b>2.6</b>	<b>20.6</b>	<b>0.20</b>	<b>526,500</b>	<b>5,200</b>
Inferred	3	2.2	11.7	0.19	258,500	4,300
Inferred	4 <sup>2</sup>	3.7	3.9	0.04	146,000	1,600
Inferred	ALL	15.3	10.1	0.16	1,542,000	24,100
Inferred	Excluding Domain 4	11.7	11.9	0.19	1,396,000	22,500

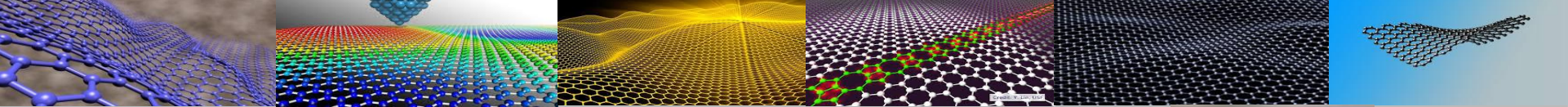
<sup>1</sup> High grade core enveloped by Domain 1  
<sup>2</sup> Low grade domain (eastern flank of The Gilbert Arc)  
 Note: Appropriate rounding applied

*This is adequate to produce 50,000 tonnes TGC per annum for 10 years @ 96% recovery*

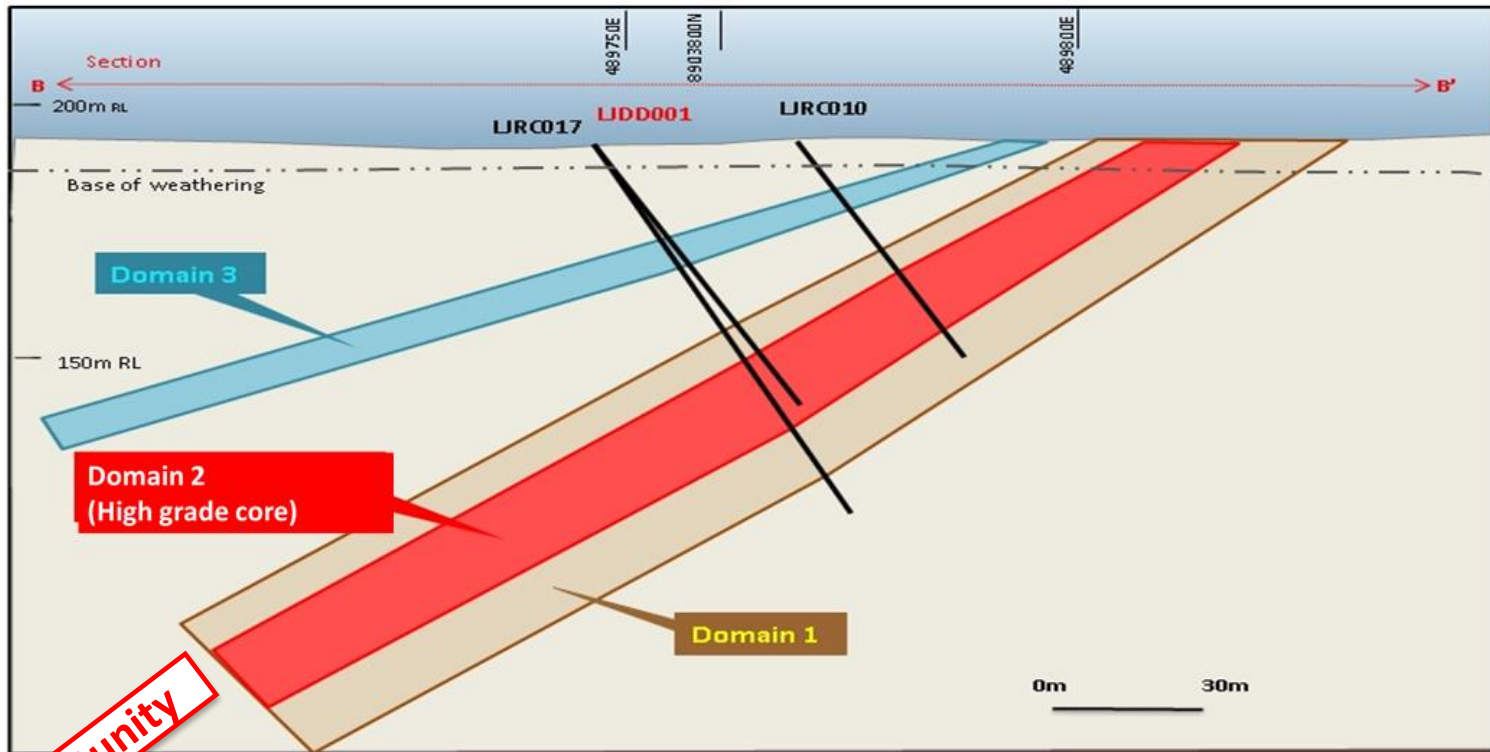


# Lindi Jumbo Project: Resource Model

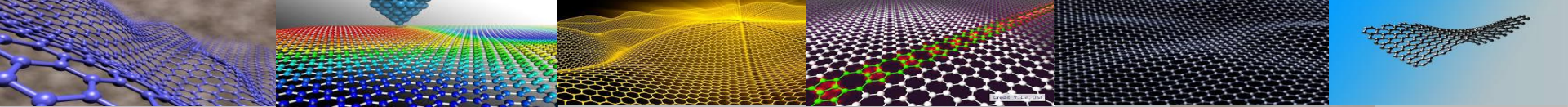




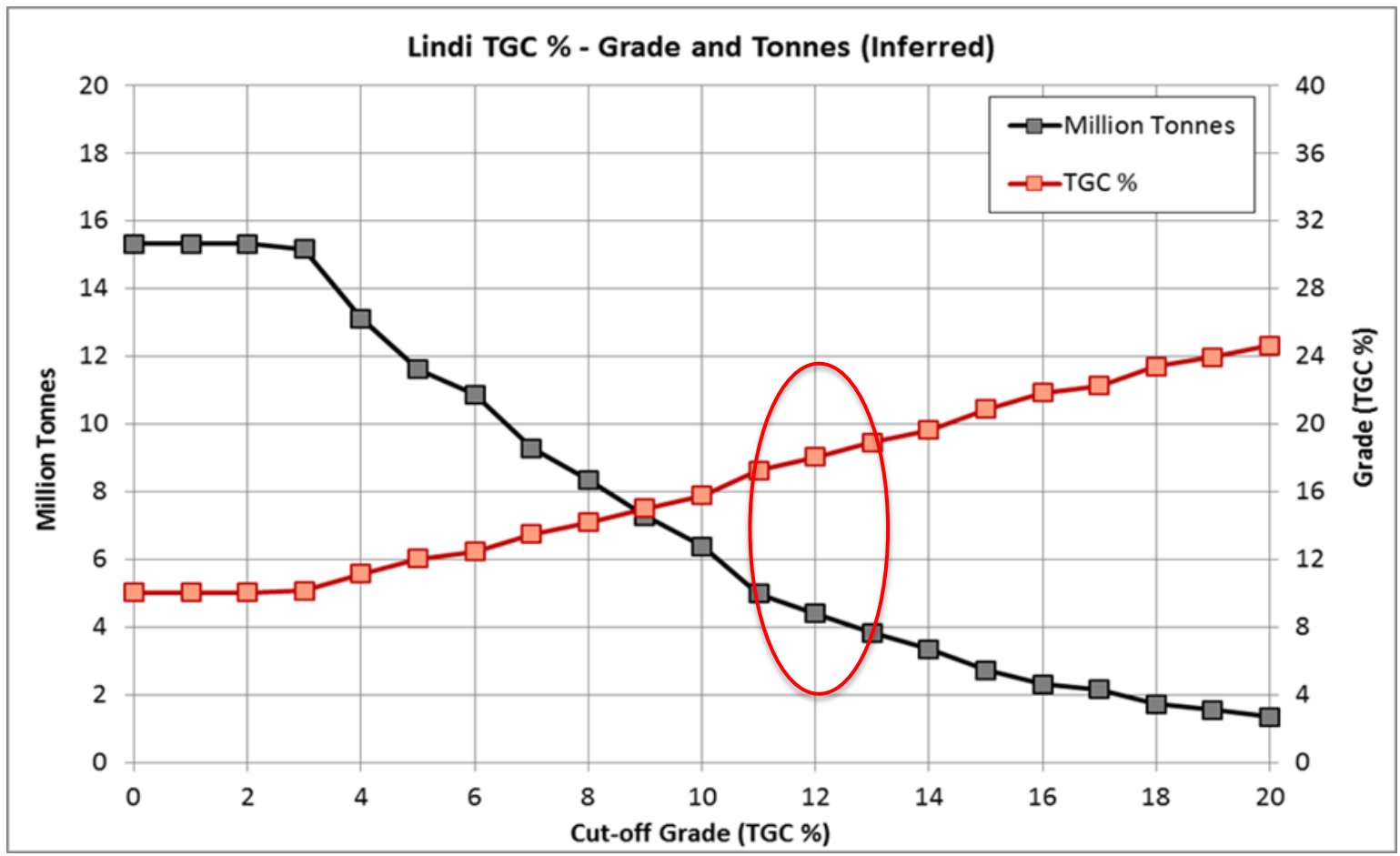
# Section BB' Through Resource Model

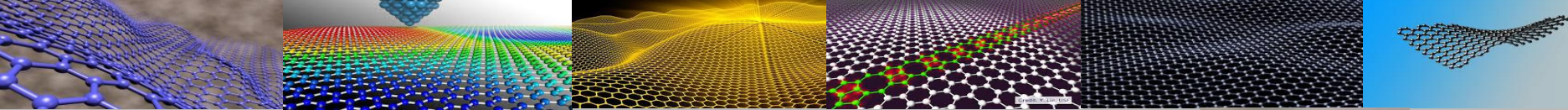


**Opportunity**

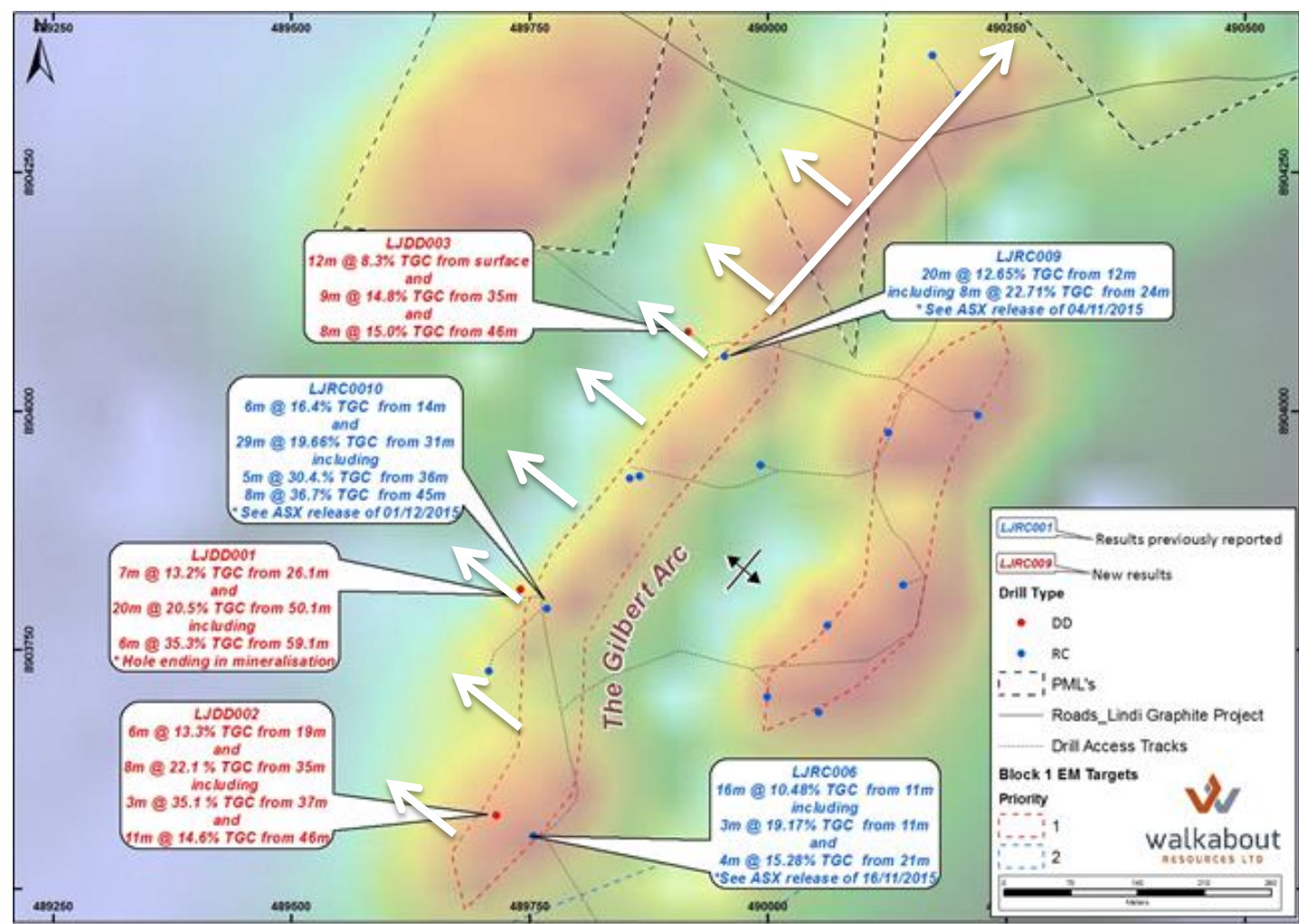


# Lindi Jumbo Project: Grade Tonnage Curve





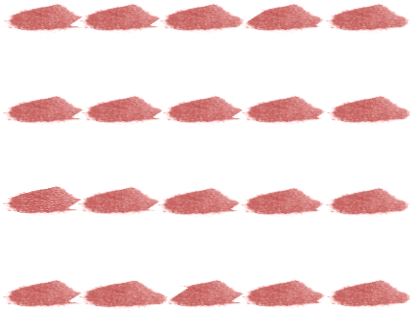
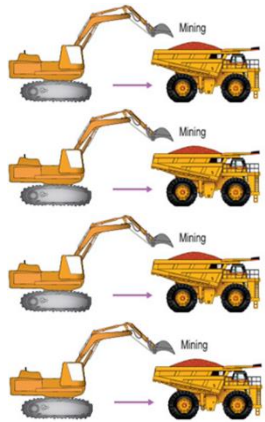
# Lindi Jumbo Project: Potential to expand current Resource



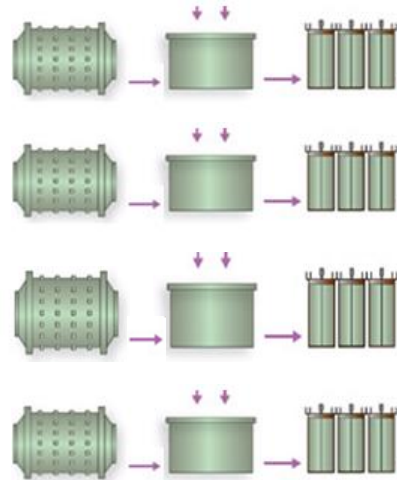


# Why Grade is King in Flotation Technology

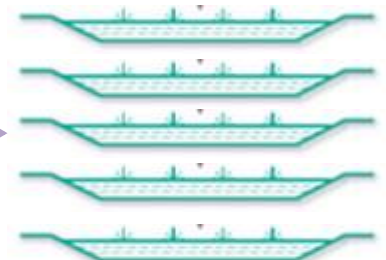
## 5% TGC Mine Head Grade



20 tonne, mine transport and ROM Feed



20 tonne crush, mill and float



19 tonne to tailings

1 tonne concentrate at 95% TGC



## 20% TGC Mine Head Grade



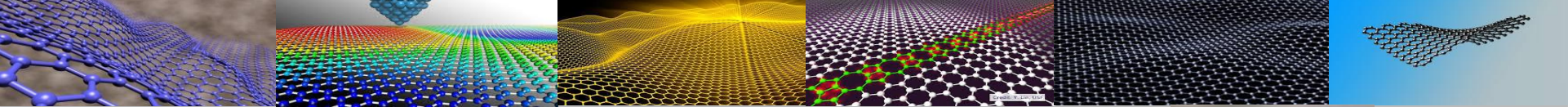
5 tonne, mine transport and ROM Feed



5 tonne crush, mill and float

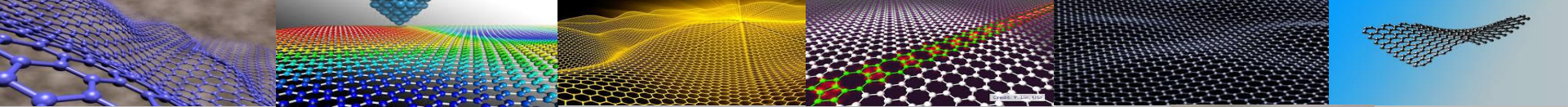
4 tonne to tailings





# Lindi Jumbo Project: Metallurgy and Recovery

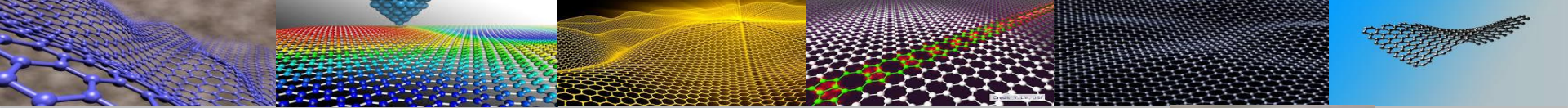
		Com Ro Sc Float Test		Composite Rougher-Cleaner Float Test							
		Test 0		Test 1		Test 2		Test 3		Test 4	
		Flake Size Distribution	Grade	Flake Size Distribution	Grade	Flake Size Distribution	Grade	Flake Size Distribution	Grade	Flake Size Distribution	Grade
		Mass %	TGC %	Mass %	TGC %	Mass %	TGC %	Mass %	TGC %	Mass %	TGC %
<b>Gilbert Arc High Grade Fresh Ore Composite</b>	<b>Grade (TGC%)</b>		<b>65.2%</b>		<b>89.8%</b>		<b>94.3%</b>		<b>95.5%</b>		<b>95.7%</b>
	Jumbo (> 300µm)	64.8%	72.1%	31.7%	94.6%	22.0%	96.4%	16.7%	96.3%	17.1%	97.0%
	Large (180µm to 300µm)	18.6%	61.2%	36.1%	92.1%	35.1%	95.2%	35.3%	96.6%	35.1%	96.5%
	<b>Large and Jumbo</b>	<b>83.4%</b>		<b>67.8%</b>		<b>57.1%</b>		<b>52.0%</b>		<b>52.2%</b>	
	Medium (150µm to 180µm)	4.2%	65.3%	8.1%	89.9%	8.4%	94.8%	7.5%	96.0%	9.3%	96.2%
	Small (106µm to 150µm)	6.0%	61.1%	11.5%	87.5%	16.0%	94.0%	18.5%	95.9%	14.8%	96.0%
	Fine (75µm to 106µm)	3.0%	59.6%	6.5%	87.2%	8.4%	93.1%	8.0%	95.2%	9.5%	95.8%
	< 75µm	3.5%	39.5%	6.1%	80.0%	10.0%	87.7%	14.1%	91.1%	14.3%	91.3%



# Lindi Jumbo Project – Input Ore Flake Sizes

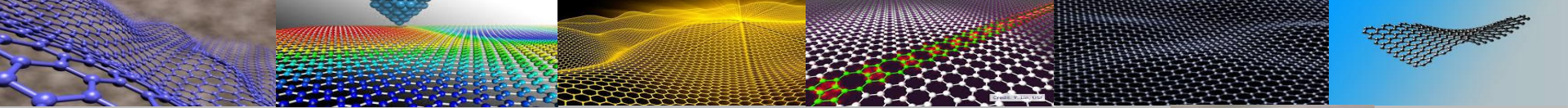
LRJK 001 P100 0.85mm Size by Analysis					
PRODUCT Size (mm)	Yield %	TC		TGC	
		%	dist.	%	dist.
+0.5	17.19%	44.2	23.30%	44.0	23.43%
+0.3	26.64%	39.4	32.18%	38.6	31.85%
+0.18	22.27%	32.1	21.92%	31.8	21.94%
+0.15	6.39%	27.4	5.37%	27.2	5.38%
+0.075	13.68%	23.8	9.98%	23.8	10.09%
-0.075	13.82%	17.1	7.24%	17.1	7.32%
<b>Calculated Head</b>	<b>100.00%</b>	<b>32.617</b>	<b>100.00%</b>	<b>32.29</b>	<b>100.00%</b>

Partial Result – This is not the Product but the Feedstock  
 Partial 1 of 10 Samples



# Lindi Jumbo Project: Visible Flakes

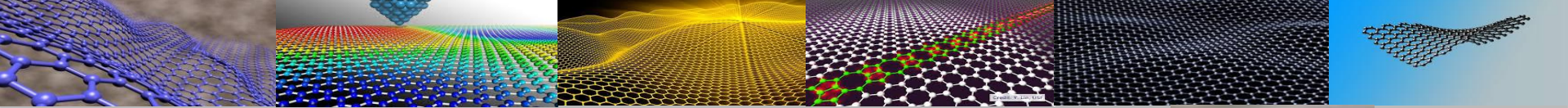




## Lindi Jumbo Project: Massive Graphite

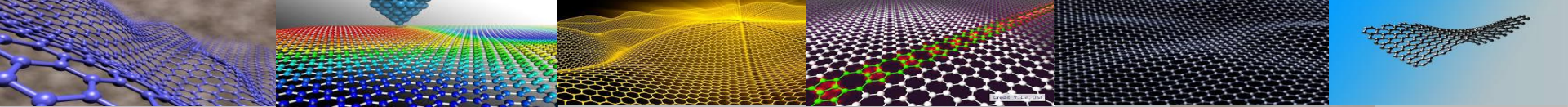


Spectacular quality jumbo flake graphite at outcrop at Lindi Graphite



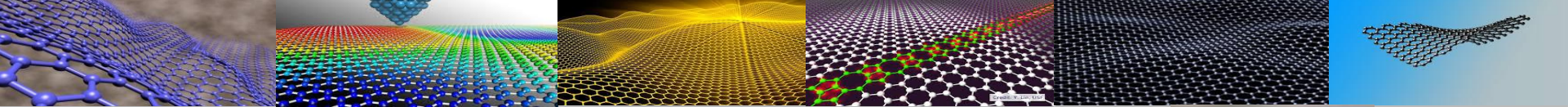
# Lindi Jumbo Project: Massive Graphite



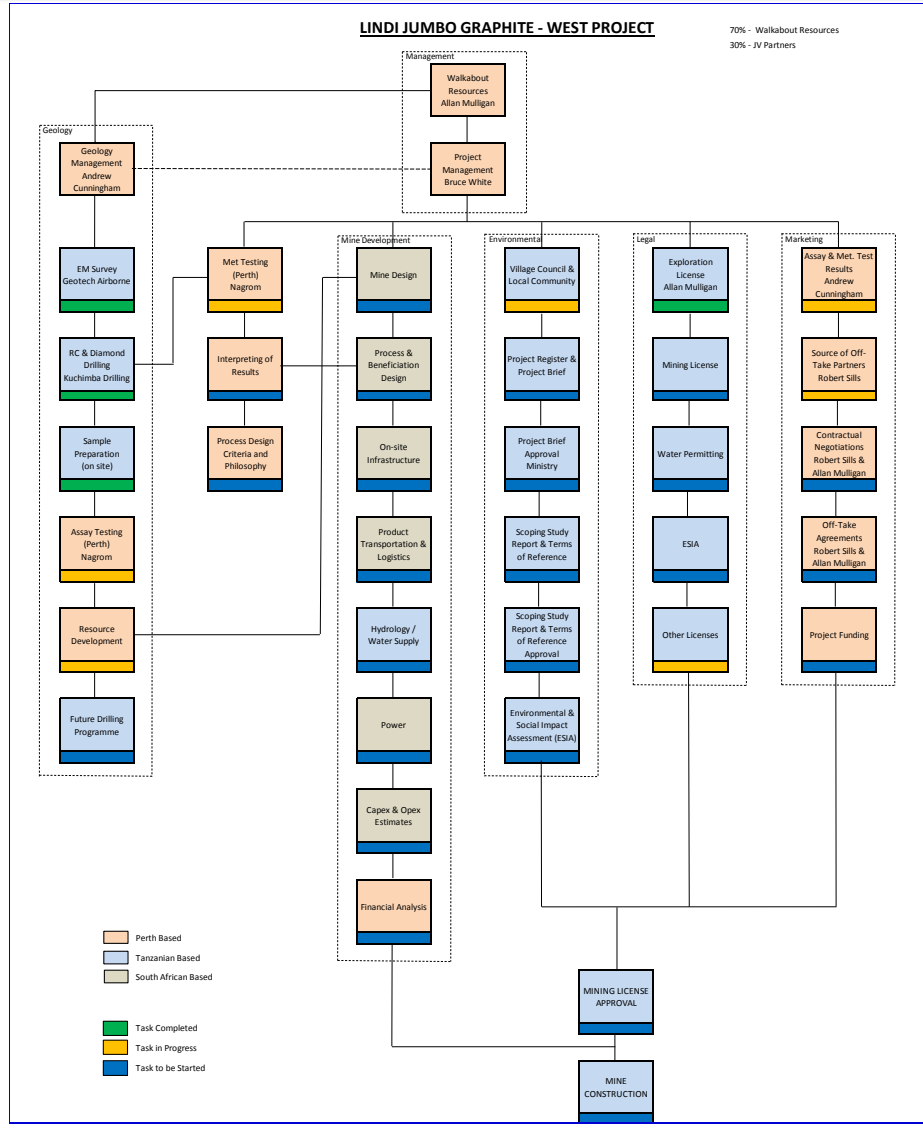


# Lindi Jumbo Project – Initial Design Testwork Underway



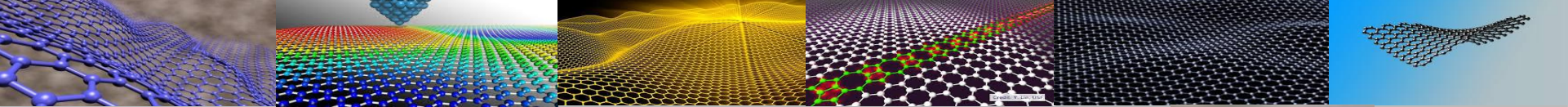


# Lindi Jumbo Project – Project Implementation Structure



Project development plan is already well advanced with capability to accelerate and fast track many elements

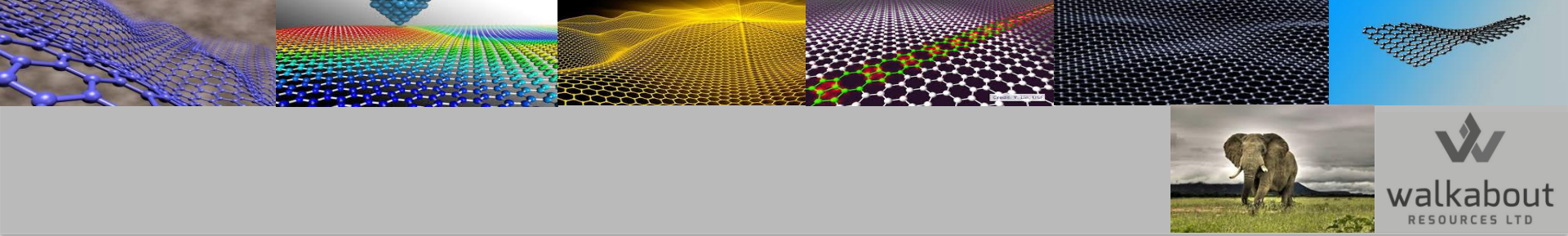




## Compelling Investment Case



- **Right next to** Magnis' Nachu Project valued at +\$125m undiluted
- Grade is **substantially higher** than Nachu – lower input costs
- Early results **confirm** that the Jumbo flake ratios will be similar to Nachu
- Work conducted with other graphite projects has **mapped out** what WKT needs to do to enable a fast track
- WKT will apply for Mining Licence not Special Mining Licence – substantially easier and quicker
- Huge upside to increase high grade portions of Resource
- Project to be constructed during 2017



## Forward-Looking Statements

This presentation includes certain “Forward-Looking Statements.” All statements, other than statements of historical fact, included herein, including without limitation, statements regarding forecast cash flows and potential mineralisation, resources and reserves, exploration results and future expansion plans and development objectives of Walkabout Resources Limited are forward-looking statements that involve various risks and uncertainties. There can be no assurance that such statements will prove to be accurate and actual results and future events could differ materially from those anticipated in such statements.

The modelling and price predictions used are sourced on open-file. All information used regarding peer forecasts make use of publically available information.

[www.wkt.com.au](http://www.wkt.com.au)

+61 6298 7500

Level 3, 681 Murray Street

West Perth WA 6005