

Birimian Gold
Limited

Mining Indaba Presentation
Capetown, South Africa
8th – 10th February 2016



This presentation has been prepared by Birimian Gold Limited (BGS) for general information purposes only. The presentation is not and should not be considered as an offer or invitation to subscribe for or purchase any securities in BGS, or as an inducement to make an offer or invitation with respect to those securities. No agreement to subscribe for securities in BGS will be entered into on the basis of this presentation. This presentation may contain certain forward-looking statements which have not been based solely on historical facts but rather on BGS's current expectations about future events and a number of assumptions which are subject to significant uncertainties and contingencies many of which are outside the control of BGS and its directors, officers and advisers. Due care and attention has been taken in the preparation of this presentation. However, the information contained in this presentation (other than as specifically stated) has not been independently verified for BGS or its directors and officers, nor has it been audited. Accordingly, the company does not warrant or represent that the information contained in this presentation is accurate or complete. To the fullest extent permitted by law, no liability, however arising, will be accepted by BGS or its directors, officers or advisers, for the fairness, accuracy or completeness of the information contained in the presentation.

Forward Looking Statements

Statements regarding plans with respect to the Company's mineral properties are forward looking statements. There can be no assurance that the Company's plans for development of its mineral properties will proceed as expected. There can be no assurance that the Company will be able to confirm the presence of mineral deposits, that any mineralisation will prove to be economic or that a mine will successfully be developed on any of the Company's mineral properties

Competent Persons Statement

The information in this report that relates to exploration results is based on information compiled by or under the supervision of Kevin Anthony Joyce. Mr Joyce is Managing Director of Birimian Gold and a Member of the Australian Institute of Geoscientists. Mr Joyce has sufficient experience which is relevant to the style of mineralisation and type of deposit under consideration and the activity he is undertaking to qualify as a Competent Person as defined in the 2012 Edition of the "Australasian Code for Reporting of Exploration Results. Mr Joyce consents to the inclusion in the report of the matters based on his information in the form and context in which it appears.

Previous Reported Results

There is information in this presentation that relates to previously reported Exploration Results. The Company confirms that it is not aware of any new information or data that materially affects the information included in the original market announcement, and that all material assumptions and technical parameters have not materially changed. The Company confirms that the form and context in which the Competent Person's findings are presented have not been materially modified from the original market announcement.

***Emerging West African Gold Explorer
Operations in Southern Mali and Liberia***

VISION

To become a self funded gold exploration company, targeting a multi-million ounce resource inventory

BIRIMIAN GOLD STRATEGY

- ▶ Focus on unlocking development solution for existing gold deposits in Mali
- ▶ Leverage off learnings from recent exploration success and in-country networks to increase gold inventory via targeted exploration
- ▶ Potential cash flow from mine development to fund expanded exploration and acquisition program

Shares on Issue	93m
Options	23m
Market Cap (@ 5.5c)	\$5.1m
Cash (at 31 December 2015)	\$0.5m
Enterprise Value	\$4.6m



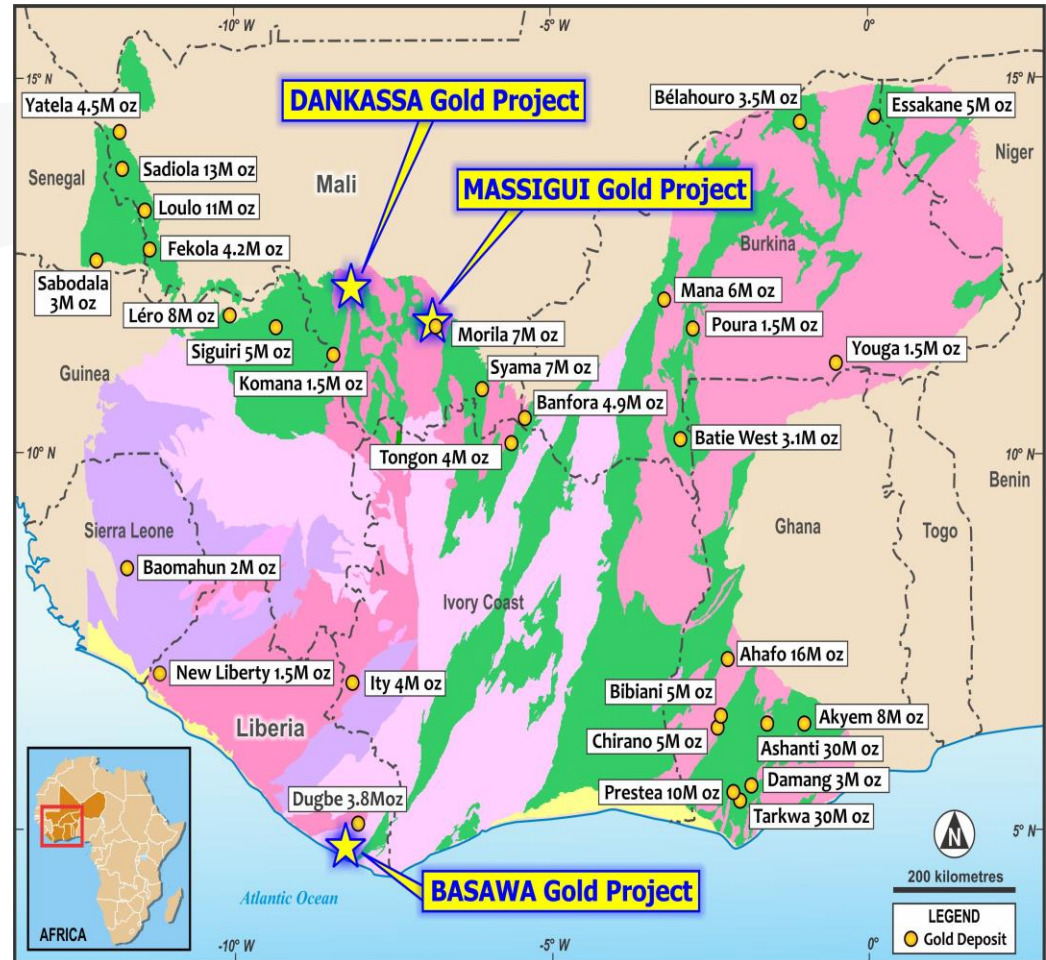
Board & Management

Winton Willesee	<ul style="list-style-type: none"> Non-Executive Chairman Finance - Extensive corporate experience
Kevin Joyce	<ul style="list-style-type: none"> Managing Director Geologist – 20 years experience +8 years Mali, ex-Resolute Mining
Hugh Bresser	<ul style="list-style-type: none"> Non Executive Director Geologist - 22 years experience

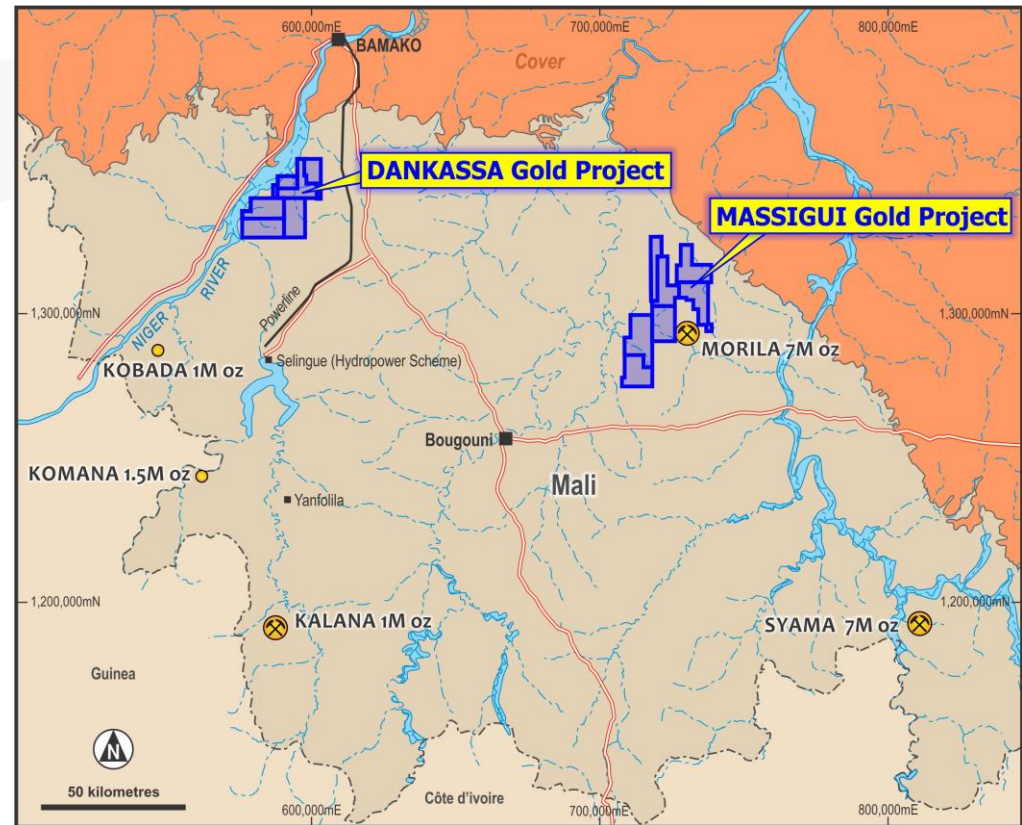
Major Shareholders

Sprott Global Resource Investments	18%
Directors	3%

- ▶ Discovery Driven Explorer
- ▶ 2,114km² tenements located in highly prospective Birimian Greenstone Belt of West Africa
- ▶ Targeting multi-million ounce gold deposits in Southern Mali and Liberia
- ▶ Multi-year in-country experience and advanced knowledge of regional geology
- ▶ Focus on advancing new gold discoveries at the Massigui Gold Project, Mali.
- ▶ Near-term cash flow potential from mining of defined deposits.



- ▶ 3rd Largest Gold Producer in Africa
- ▶ Strong mining culture
- ▶ Mali hosts a number of world class high grade gold mines, including:
 - Morila (7Moz);
 - Syama (7Moz);
 - Sadiola (13Moz); and
 - Fekola (5Moz)
- ▶ Strong track record for rapid permitting of new projects
- ▶ Excellent fiscal terms:
 - 3 year company tax holiday for new mines
 - Low royalties
 - Tax exempt fuel (18% for LOM)
- ▶ Politically stable environment – constitutional democracy since 1992



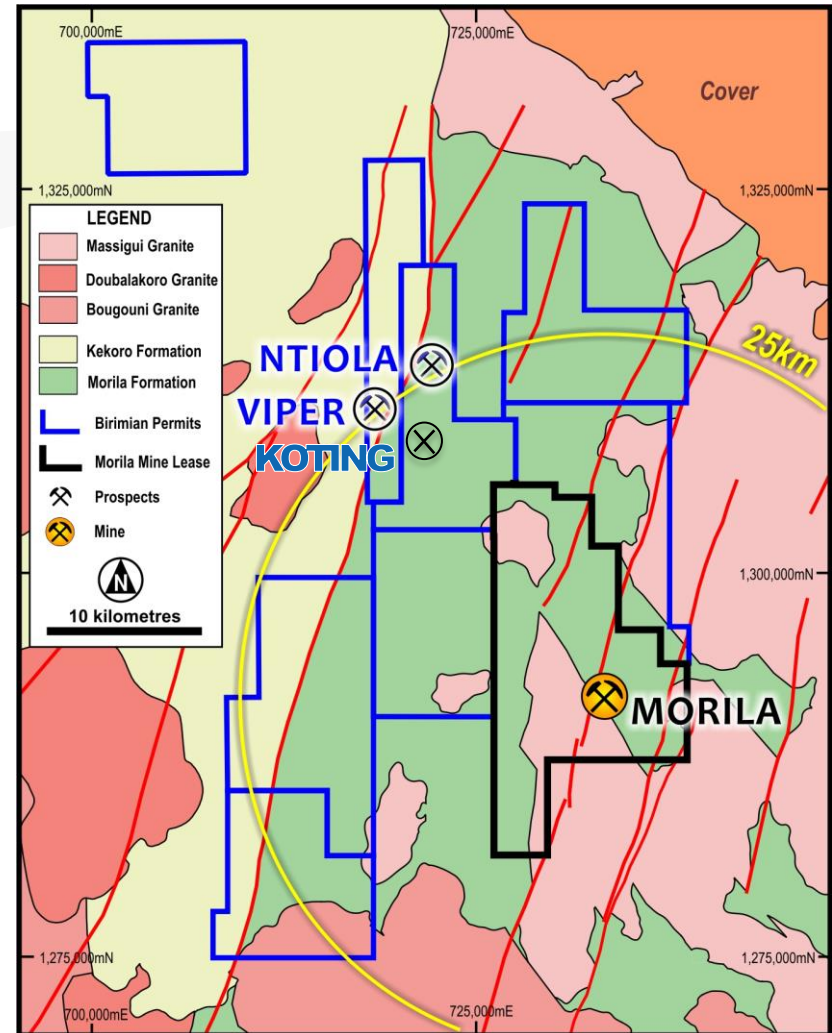
BIRIMIAN GOLD'S SOUTHERN MALI GOLD PROJECTS

Massigui Gold Project

Birimian Gold
Limited

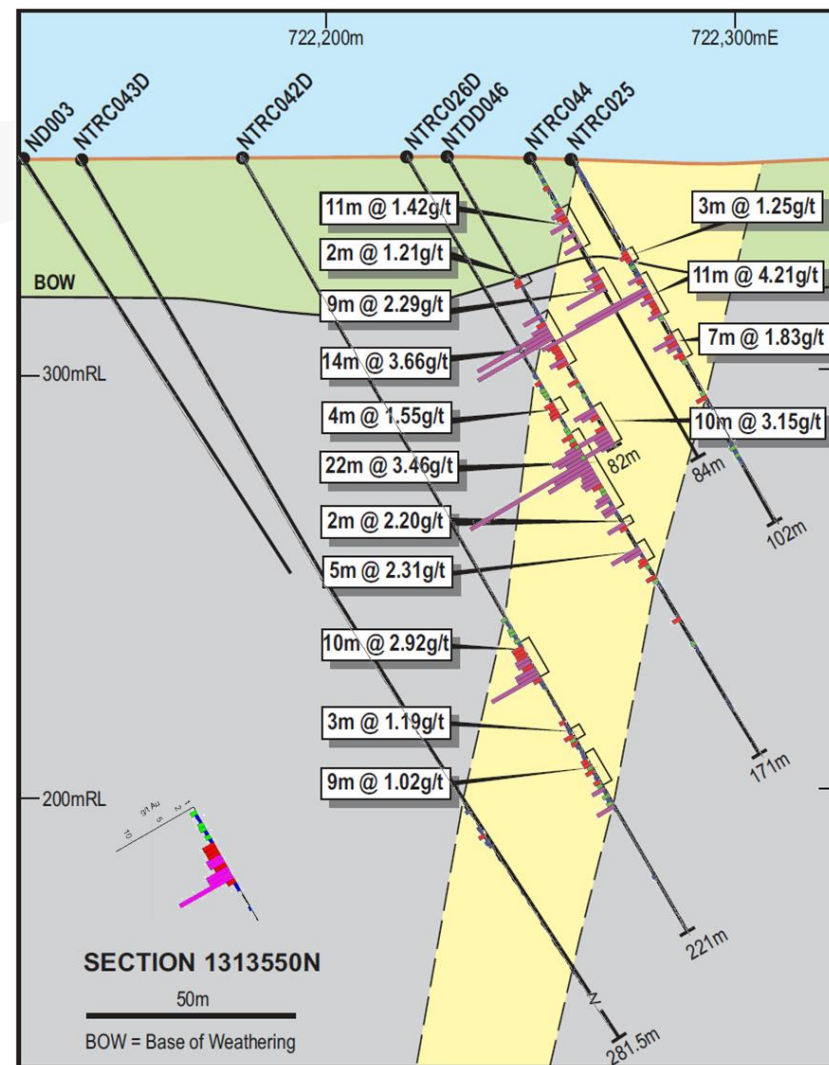
- ▶ Large (754 km²) land holding.
- ▶ >35,000m of drilling completed by BGS
- ▶ **Three new gold deposits discovered** in the period from late-2013 to mid-2015
 - ❖ Ntiola
 - ❖ Viper
 - ❖ Koting
- ▶ Combined Target Potential at known deposits:

8 Mt @ 1.5 g/t Au for ~400,000oz Au*
- ▶ All deposits located <25km from 7Moz Morila Gold Mine and Processing Plant
- ▶ Excellent potential for further discovery of high grade, large tonnage, free milling gold mineralisation



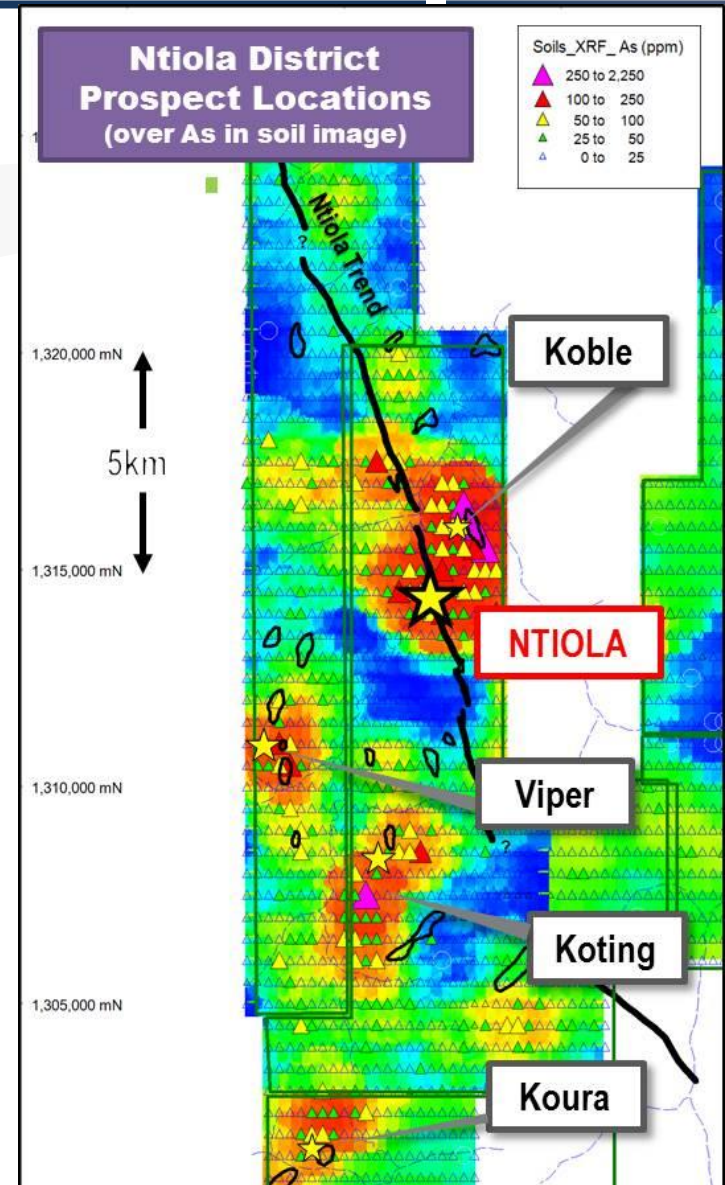
** Target based on grade and tonnage modelling of nominally 50m to 100m spaced RC/AC and DD drilling. The potential quantity and grade of this Target is conceptual in nature, and there has been insufficient exploration drilling to estimate a Mineral Resource.*

- ▶ Robust, well defined, shallow gold zone; amenable to open pit mining
- ▶ Preliminary metallurgy study indicates ore is highly amenable to CIL processing; recoveries of up to 98.4%
- ▶ High proportion of gravity recoverable gold; up to 64.2%
- ▶ Positive social and environmental studies confirm no fatal flaws to mine development
- ▶ **Next phase of evaluation work to include –**
 - Infill drilling to define JORC-compliant resource
 - Advanced metallurgical studies
 - Formal Environmental & Social Impact Assessment

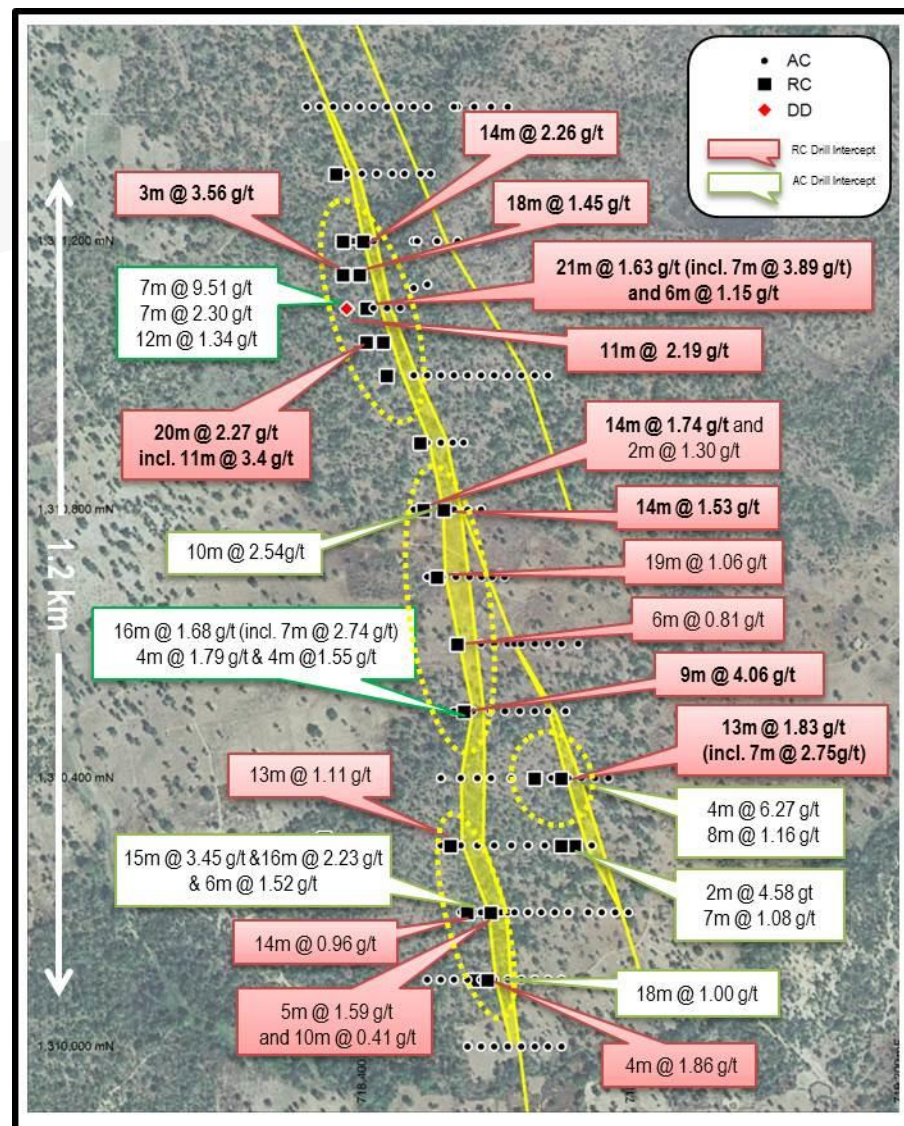


Massigui - New Discoveries

- ▶ Excellent scope to delineate multiple new gold sources in the Ntiola District
- ▶ New resources to have a major impact on potential development of an open pit mining operation in the Ntiola District
- ▶ **Viper Prospect** – New discovery, December 2014
- ▶ **Koting Prospect** – Extensive broad gold intersections in recent RC drilling, June 2015
- ▶ New potential large-scale gold resources all occur in close proximity to Ntiola Deposit.
- ▶ Highly successful exploration program rapidly developing other high potential gold targets

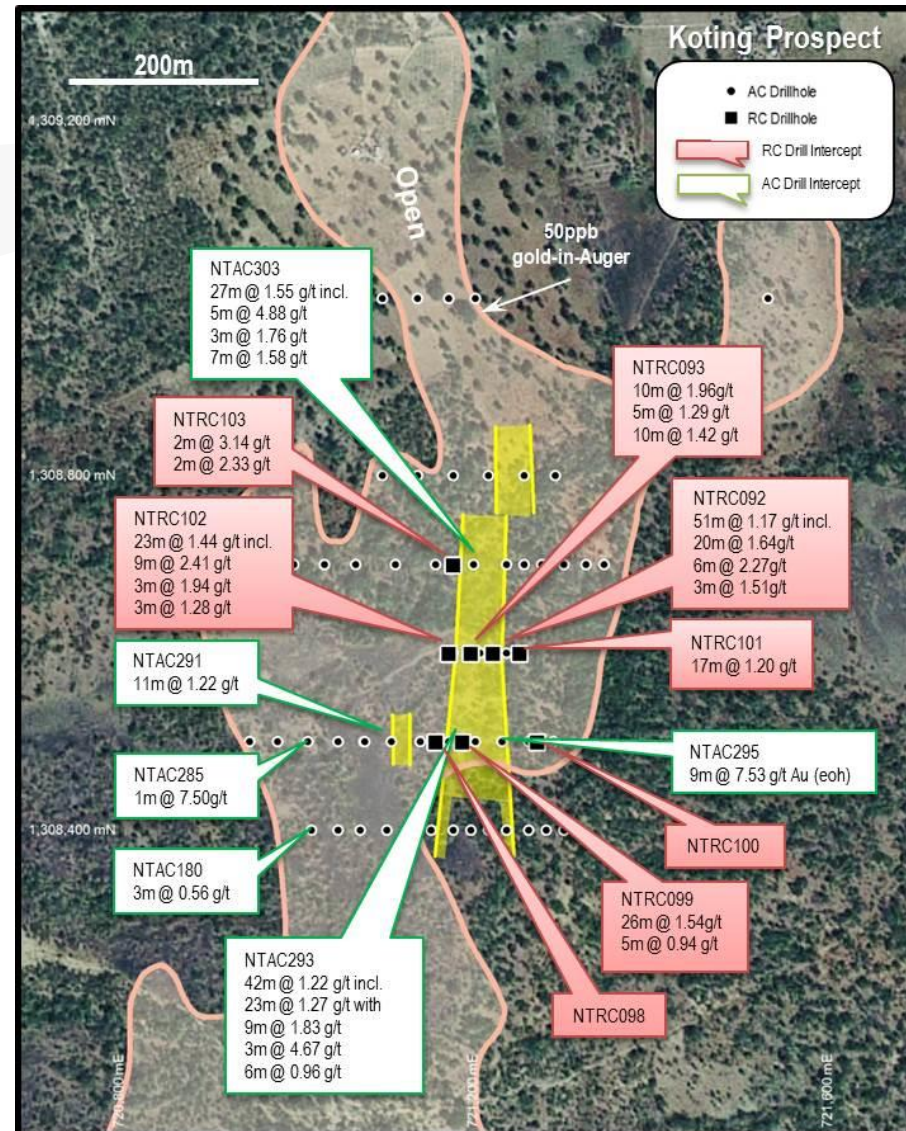


- ▶ Gold discovery (December 2014)
- ▶ Excellent scope for shallow (oxide) open pit mineable resources
 - 7m @ 9.51 g/t Au from 0m
 - 9m @ 4.06 g/t Au from 19m
 - 15m @ 3.45 g/t Au from 4m
 - 20m @ 2.27 g/t Au from 44m, incl.
 - 11m @ 3.40 g/t Au
 - 10m @ 2.54 g/t Au from 14m
- ▶ Gold mineralised structures extending over >1.2km
- ▶ Extensive, broad (up to 60m wide) gold alteration zones host discrete high-grade gold shoots
- ▶ Drilling to date has focused on shallow (< 50m) oxide resource potential.
- ▶ Diamond drill hole extends gold zone at depth and confirms down dip potential.



Koting Prospect

- ▶ Large-scale gold occurrence, identified December 2014
- ▶ Broad gold intersections in very wide spaced RC drilling, including;
 - 51m @ 1.17 g/t Au
 - 27m @ 1.55 g/t Au
 - 26m @ 1.54 g/t Au
 - 42m @ 1.22 g/t Au
 - 10m @ 1.96 g/t Au
- ▶ High grade gold including **9m @ 7.53 g/t (ended in mineralisation)**
- ▶ Deeply weathered – Oxide zones persist to >70m vertical
- ▶ Open along strike and at depth
- ▶ Excellent scope for shallow (oxide) open pit mineable resources



- ▶ Combined Target Potential at Ntiola, Viper and Koting ;

8 Mt @ 1.5 g/t Au for ~400,000oz Au*

- ▶ Excellent scope to realise the potential of this robust and conservative exploration target.

- ▶ Robust Target

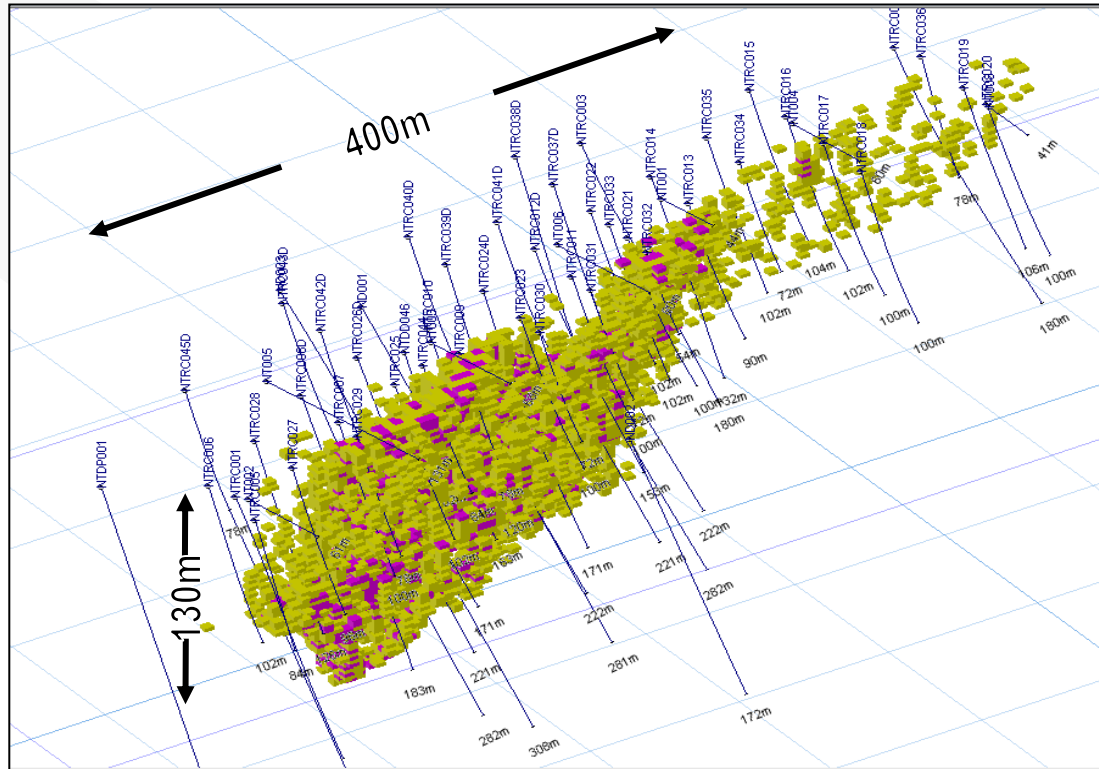
- ▶ Defined by >15,000m of detailed 50m to 100m spaced RC/AC and DD drilling.
- ▶ Sound geological models show good continuity of mineralisation.

- ▶ Conservative Target

- ▶ Focused on dominantly shallow oxide potential
- ▶ All deposits open at depth. Good potential for substantially larger gold resources with additional deeper drilling
- ▶ Opportunity for additional ounces at other prospects, incl, Koble, Kondji and Ntiola South (not included in current estimate)

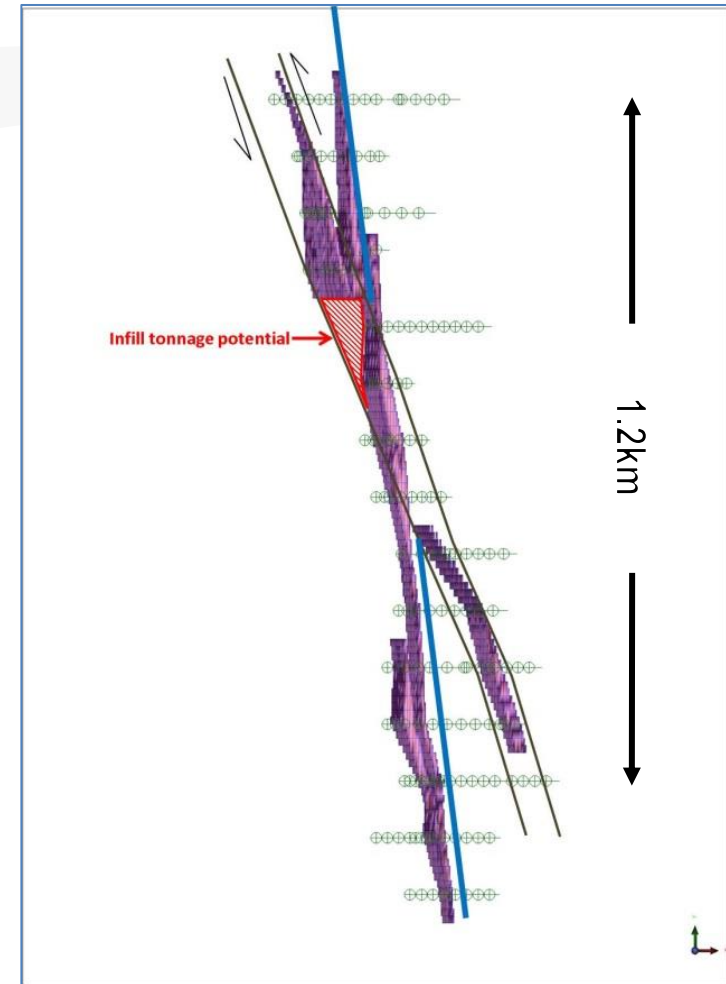
* Target based on grade and tonnage modelling of nominally 50m to 100m spaced RC/AC and DD drilling. The potential quantity and grade of this Target is conceptual in nature, and there has been insufficient exploration drilling to estimate a Mineral Resource.

Target Potential



▲ *Ntiola Deposit model. Isometric view looking to the north-west. All blocks >1g/t Au are shown.*

▶ *Viper Deposit model. Plan view.*



- ▶ Morila Gold Mine – Historic Production 6Moz Au since Oct 2000; 4 million tonnes pa throughput
 - *Randgold Resources 40% & Operator*
 - *AngloGold Ashanti 40%*
 - *Government of Mali 20%*
- ▶ Massigui Project located adjacent to and surrounding the Morila Plant.
- ▶ Current Mill feed at Morila will be exhausted in mid 2016
 - Plant to be reconfigured to reprocess low grade tailings
- ▶ Potential for Massigui higher grade ore to be processed at Morila
 - June 2013 – Birimian entered into MOU for Toll Treatment with Morila SA
 - Randgold has first Right of Refusal over any JV or sale of all or part of the Massigui Project

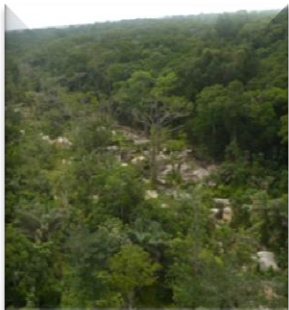
Quality ground holding in World Class Gold District

- ▶ New gold discoveries at Ntiola, Viper and Koting Prospects
- ▶ Combined Target Potential at known deposits - 8Mt @ 1.5 g/t Au for ~400,000oz Au
- ▶ Corporate focus on unlocking development solution for existing deposits
- ▶ Next phase of work to consist of targeted infill drilling at known deposits to define shallow oxide gold resources amenable to open pit mining
- ▶ Project generation to leverage off learnings from recent exploration success
- ▶ Potential cash flow to fund expanded exploration and acquisition program

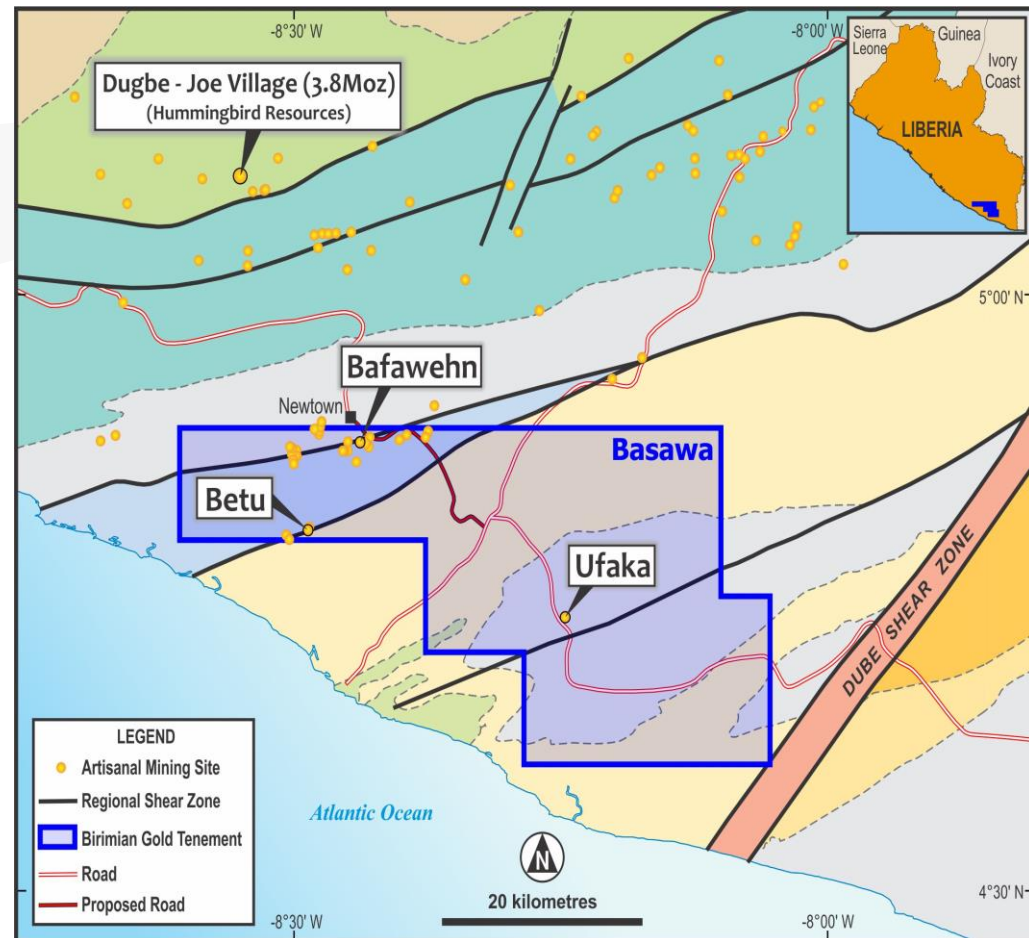
Liberia - Basawa Gold Project

Birimian Gold
Limited

- ▶ 100% interest over highly prospective 1,000km² license
- ▶ Early stage exploration project with high discovery potential
- ▶ Extensive artisanal gold workings
- ▶ Close proximity to Hummingbird Resources Ltd (AIM:HUM) - Dugbe Project (3.8Moz)
- ▶ First modern exploration work commenced by Birimian Gold



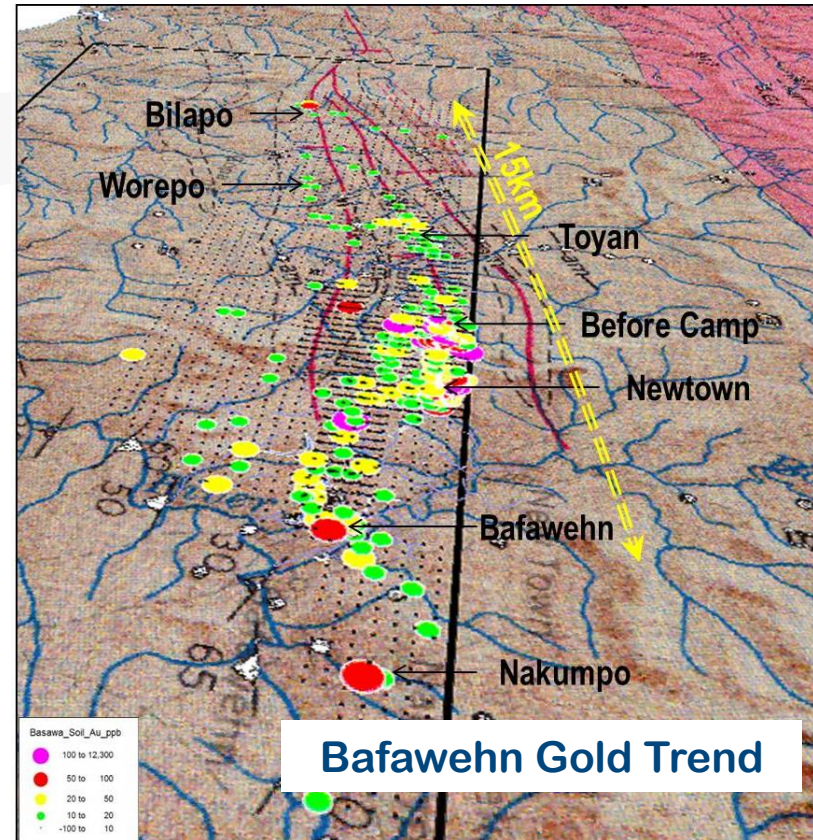
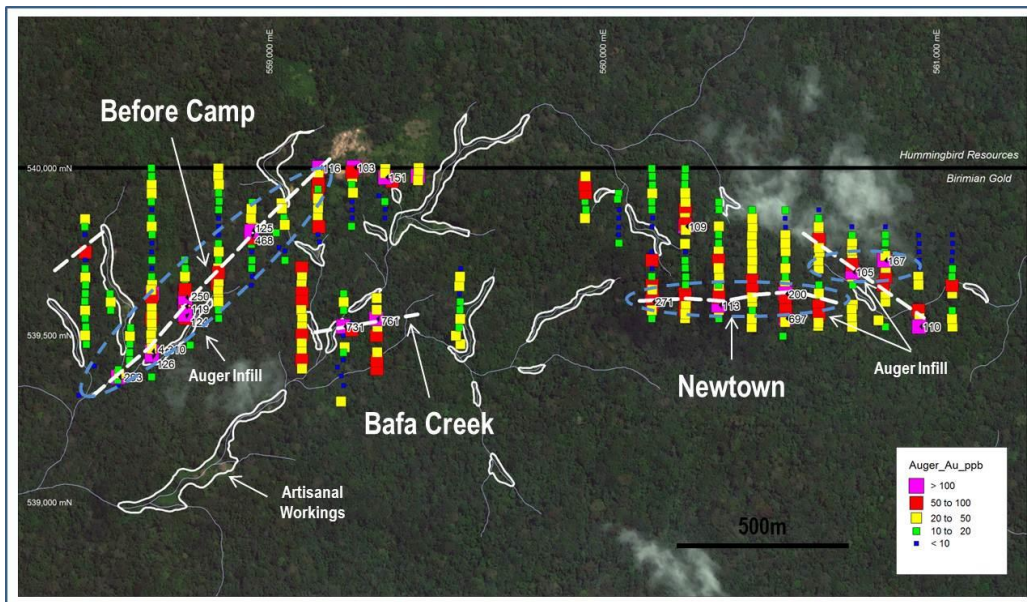
Artisanal workings
at Basawa



Simplified geology with gold occurrences (yellow) and gold projects/prospects (labelled).

Basawa Gold Project – Target

- ▶ 15km long Bafawehn Gold Trend
- ▶ Initial results of up to 4.3 g/t Au in auger
- ▶ High priority targets defined in auger sampling at Before Camp, Newtown and Bafa Creek
- ▶ ***Force Majeure called due to Ebola Epidemic. Field work remains on hold.***



Kevin Joyce
Managing Director
+61 8 9226 1356
info@birimiangold.com

ASX:BGS

www.birimiangold.com